

Diamond Drilling



41107SW0004 0010B1 SECORD

010

Township of SECORD

Report NO: 11

Work performed by: Primary Gold Mines Limited

Claim NO	Hole NO	Footage	Date	Note
S 113290	3	117.0	JUNE/62	
S 113291	4	104.0'	Apr/64	
S 113290	5	143.0'	May/64	
S 113289	6	196.0'	June/64	

TOTAL: 4 DH 560. FT

Notes:

# Diamond Drill Hole Log

## SURVEY DATA

NUMBER 3 BEARING AT COLLAR \_\_\_\_\_

DIP AT COLLAR Vertical

LOCATION Secord Township, Sudbury Mining Division  
 Latitude 122° S of # 4 post of claim S 113290  
 Departure 23° E

LOCATION	BEARING	DIP

FROM	TO	DESCRIPTION	CORE RECOVERED
0.0	0.2	Quartzite, white	
0.2	2.2	" , grey	
2.2	2.4	Quartz cerussite schist	
2.4	4.7	Quartzite, with hematite stains	
4.7	5.2	" , darker	
5.2	10.2	" , white	
10.2	18.0	" , with hematite stains	
18.0	21.5	" , white	
21.5	30.3	" , with hematite stains	
30.3	32.0	Garnet gneiss	
32.0	40.0	Quartzite, white	
40.0	42.0	Biotite garnet schist	
42.0	55.0	Quartzite, white	
55.0	55.3	" , with hematite stains	
55.3	66.5	" , white	
66.5	69.0	" , with hematite stains	
69.0	70.0	Garnet gneiss, altered	
70.0	78.0	Quartzite, with hematite stains	
78.0	83.5	" , white	
83.5	84.0	" , with hematite stains	
84.0	88.5	" , white	
88.5	89.3	" , grey	
89.3	91.5	" , white	
91.5	93.5	" , grey	
93.5	103.5	" , multi coloured	
103.5	108.0		
108.0	111.0	Hornblende garnet gneiss	
111.0	117.0	Quartzite.	

Logged by E.K. Lewin

April 22, 1962.

*E.K. Lewin*  
 E.K. Lewin, Eng.

*run 15.62*

*This hole is 127' deep. It was very blocky & ground core considerable. Poor core recovery hence 117' logged by Mr Lewin.*

*J. M. Kinman*

# Diamond Drill Hole Log

## SURVEY DATA

NUMBER 4 BEARING AT COLLAR Vertical Started April 23, 1907  
 DIP AT COLLAR Vertical Completed May 1, 1907

LOCATION Latitude 101' N of # 3 post of claim 11329  
Departure 244' E " " " " " "

LOCATION	BEARING	DIP

Primary Gold Mines Ltd., Secord Twp.

FROM	TO	DESCRIPTION	CORE RECOVERED
0.0	2.5	quartzite, white 1% impurities	
2.5	3.0	" reddish specs 2%	
3.0	17.0	" white, with reddish specs and ser. 1% impurities	
17.0	18.5	" with 50% impur. of ser. schist and hematite	
18.5	21.0	" 5% " " " " " "	
21.0	25.0	" 1% " " " " " "	
25.0	25.5	" 20% " " " " " "	
25.0	28.3	" 1% " " " " " "	
28.3	28.5	" 5% " " " " " "	
28.5	50.0	" 2% " Seams " " "	
50.0	60.0	" 1% " " " " " "	
60.0	62.5	" 5% " " " " " "	
62.5	65.0	" 1% " " " " " " , broken core	
65.0	68.0	Lost core	
68.0	70.0	White quartzite	
70.0	71.6	Lost core	
71.6	73.0	quartzite with hem. slips 4% imp.	
73.0	75.0	Lost core	
75.0	77.5	quartzite with dark min. 10% imp.	
77.5	77.6	Biotite, chlorite schist at 40 degrees to c/a	
77.6	79.5	quartzite with dark min and hem. 10% imp.	
79.5	80.0	Chlorites schist and hem.	
80.0	80.5	Hem. mud	
80.5	87.0	quartzite with dark min. and hem. 10% imp.	
87.0	87.3	Chlorite schist	
87.3	100.0	quartzite	
100.0	104.0	" w. mica and hem, schistose, 10% imp.	

End of hole

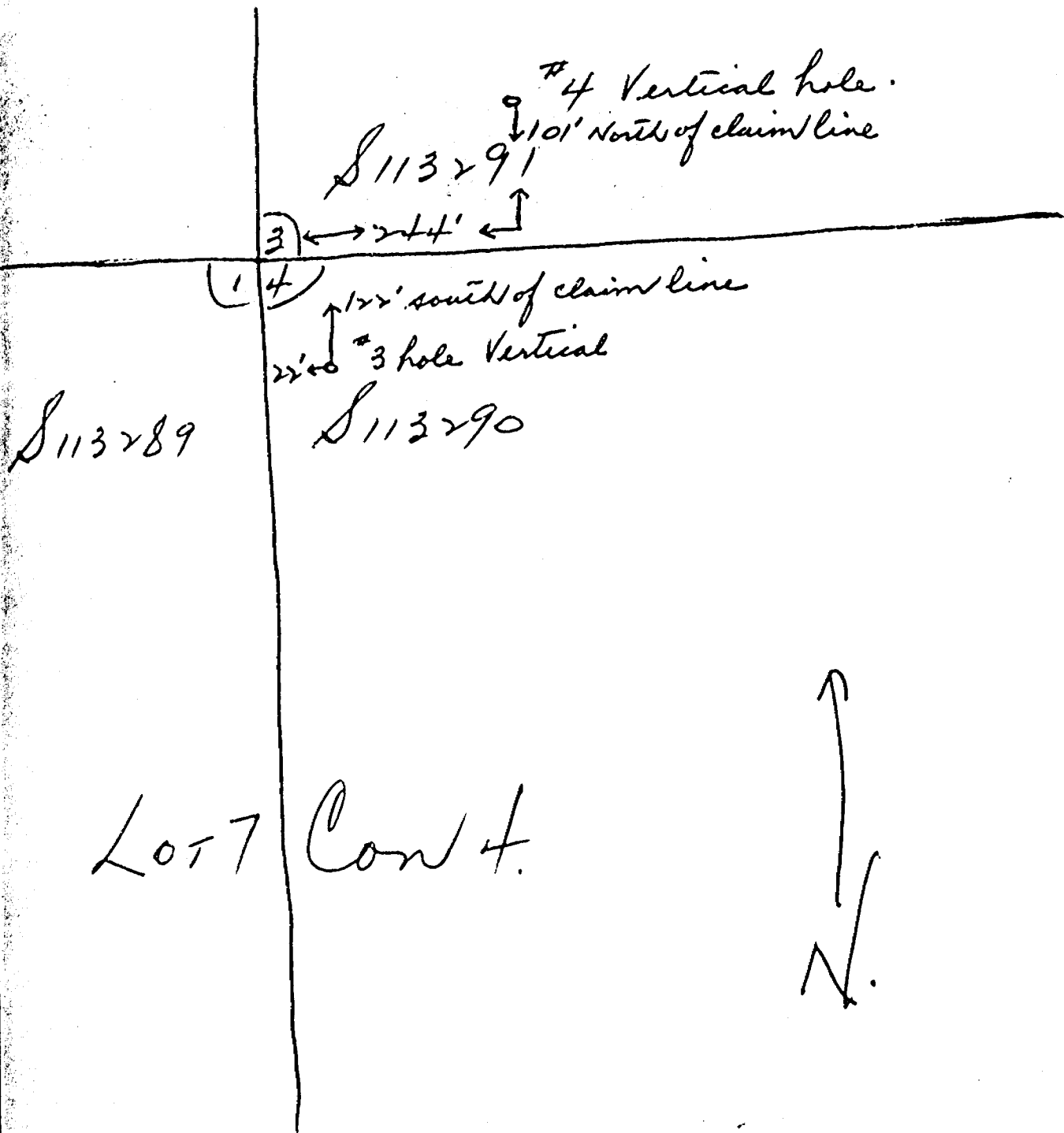
Average silica 96%

Drilled by Acme drilling Ltd.

Logged by E.M. Lewin.

*E.M. Lewin*  
 E.M. Lewin, P. Eng

Secord Twp.



S 113289

S 113291

S 113290

Lot 7 Cont.

N.

Acme Diamond Drilling Limited.

Started - May 15/64

Finished - May ~~28/64~~  
28/64

SECORD TWP.

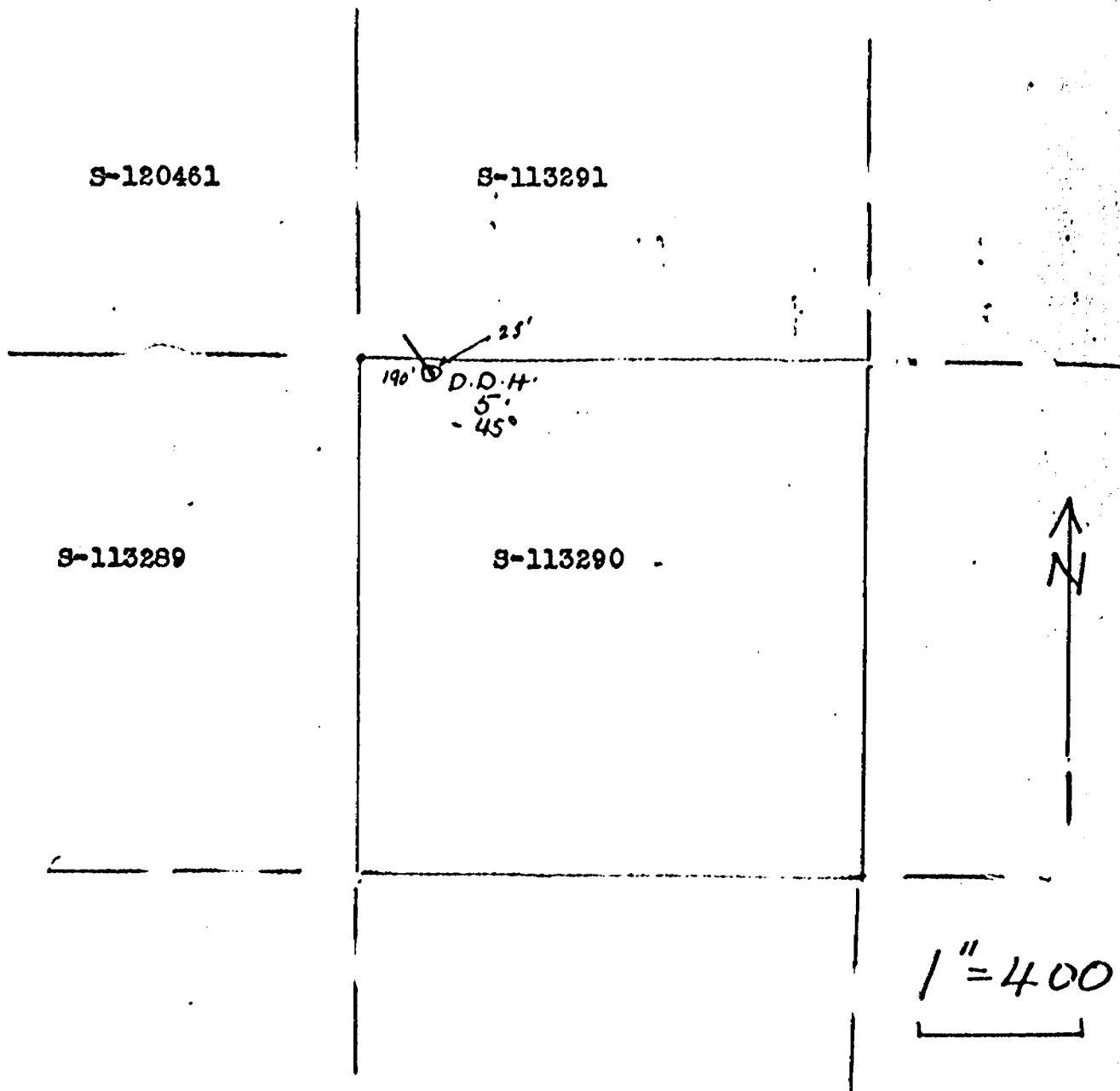
Sudbury Mining Division- Ontario

Logged by D.C. McKechnie

Dip - -45°  
Direction N 55° W.Location- On claim S-113290  
190 feet east of and  
25 " south of  
N.W. Corner of claim.

Distance From	To.	Description
06.0	38.0	- Quartzite slightly feldspathic 1' missing-
38.0	38.0	- Quartzite- core broken, shows quartz crystals some limonite stain.
38.0	40.0	- Core missing.
40.0	53.5	- Quartzite- slightly feldspathic
53.5	55.0	- Core missing.
55.0	58.0	- Quartzite
58.0	58.2	- Limonite and gouge-
58.2	62.5	- Quartzite
62.5	65.0	- Core missing.
65.0	76.0	- Quartzite ( with 0.2' of gneiss)
76.0	78.5	- Gneiss (Hornblende)
76.5	78.0	- Quartzite
78.0	78.5	- Schist (Muscovite mica)
78.5	94.5	- Quartzite
94.5	95.0	- Gneiss (Hornblende)
95.0	103.0	- Quartzite
103.0	103.5	- Gneiss ( hornblende and quartzite)
103.5	118.0	- Quartzite
118.0	118.4	- Gneiss
118.4	119.5	- quartzite
119.5	125.0	- Missing core
125.0	126.0	- Quartzite
126.0	126.5	- Gneiss (Hb)
126.5	136.0	- Quartzite
136.0	143.0	- Gneiss mixed with quartzite. Lignation at 80° to core axis. END OF HOLE.

D.C. McKechnie  
185 McNaughton St.  
Sudbury Ontario  
June 12/64Note - 3.1' of gneiss and schist  
between 0.0 and 136.0'
  
 D.C. McKechnie P. Eng.



SKETCH SHOWING LOCATION OF DDH 5

Acme Diamond Drilling Limited.

SECORD TOWNSHIP- SUDBURY MINING DIVISION

*Sam. Fisher*  
*June 13/64*

Primary Gold Mines Ltd.  
Silica Prospect.

SECOND TOWNSHIP - SUDBURY MINING DIVISION

Diamond Drill Log- D.D.H. 6.

Location- On Claim S-113289

Commenced June 25th. 1964  
 Completed July 20th. 1964

490 feet south of and  
 80 Feet West of No.1 Post S-113289

Dip - -45 Degrees  
 Direction - N 60° W.

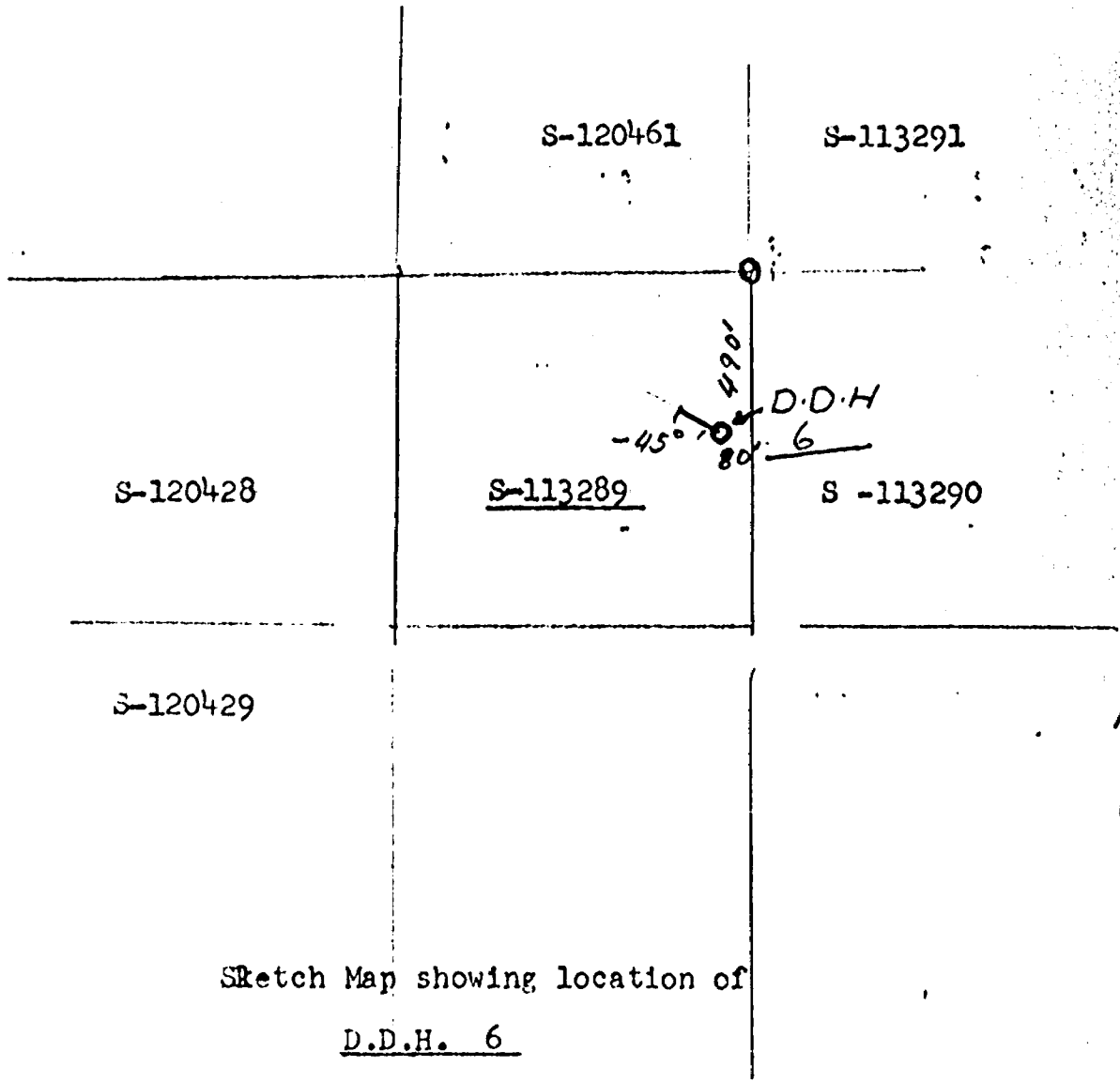
Length 196.0 feet.

Distance From	to	Description
0.0	to 35.0'	Overburden, Clay. (Casing)
35.0	36.0'	quartzite ( 80 % quartz)
36.0	40.0	" Impur: (50%) with gneiss
40.0	43.0	Gneiss ( Hornblende) foliation @ 70°
43.0	48.0	" with quartzite ( 30%)
48.0	51.0	quartzite(95% Qu)
51.0	54.0	Lost Core
54.0	60.0	Quartzite (95% Qu)
60.0	61.0	Lost core
61.0	99.0	Quartzite (97% Qu. )
99.0	100.0	Lost core
100.0	107.0	quartzite ( 95% Qu)
107.0	109.0	Lost core
109.0	113.0	quartzite (95% Qu)
113.0	117.0	Lost core
117.0	120.0	quartzite (90% Qu)
120.0	141.0	quartzite (96% Qu.)
141.0	144.0	quartzite(80% Qu). mixed with gneiss
144.0	147.0	quartzite (95% Qu)
147.0	149.0	Lost core
149.0	168.0	quartzite 95% Qu), occas seam gneiss @ 70°
168.0	171.0	Lost Core
171.0	177.0	quartzite ( Qu 95%)
177.0	187.0	quartzite ( (80% Qu) banding @ 80°
187.0	188.0	Lost Core
188.0	194.0	quartzite ( 80% Qu)
194.0	196.0	quartzite (80% ) Qu ) with gneiss bands @75°

////// D.C. McKechnie  
 D.C. McKechnie

185 McNaughton St.  
 Sudbury Ontario  
 October 26, 1964

S-3-578



Sketch Map showing location of  
D.D.H. 6

On Claim S-113289- Secord Township  
Sudbury Mining Division

Scale 1" = 10 chains.

October 26/64

*Don. Kecher*



OFFICE OF MINING RECORDER



ONTARIO

DEPARTMENT OF MINES

SUDBURY MINING DIVISION

SUDBURY, ONTARIO

June 15, 1964.



41107SW0004 0010B1 SECORD

900

Dr. K. D. Card,  
Provincial Geologist,  
Box 1030,  
Sudbury, Ont.

Dear Sir:

Enclosed herewith please find Drill logs and sketch pertaining to work performed on Claims S. 113289-90-91, Secord Township in the name of Primary Gold Mines Ltd.

Yours very truly,

A handwritten signature in cursive script, appearing to read 'K. M. Hallock'.

K. M. Hallock  
Mining Recorder

/rd  
encl.

OFFICE OF MINING RECORDER



ONTARIO  
DEPARTMENT OF MINES

SUDBURY MINING DIVISION  
SUDBURY, ONTARIO

June 29, 1964.

Dr. K. D. Card,  
Provincial Geologist,  
Box 1030,  
SUDBURY, Ontario.

Dear Sir:

We enclose herewith Drill Log pertaining to Claim  
S.120461 in the name of Primary Gold Mines Ltd. in the  
Township of Secord, being 143 days Diamond Drilling.

Yours very truly,

A handwritten signature in cursive script, appearing to read "K. M. Hallock".

K. M. Hallock  
Mining Recorder

/rd  
encl.

OFFICE OF MINING RECORDER



ONTARIO  
DEPARTMENT OF MINES

SUDBURY MINING DIVISION

SUDBURY, ONTARIO

Oct. 27/64

Dr. K.D.Card,  
Provincial Geologist,  
Box 1030,  
SUDBURY, Ontario.

Dear Sir:

Enclosed please find Drill Log pertaining to  
work performed on Claim S.113289, Secord Township,  
in the name of Primary Gold Mines Ltd.

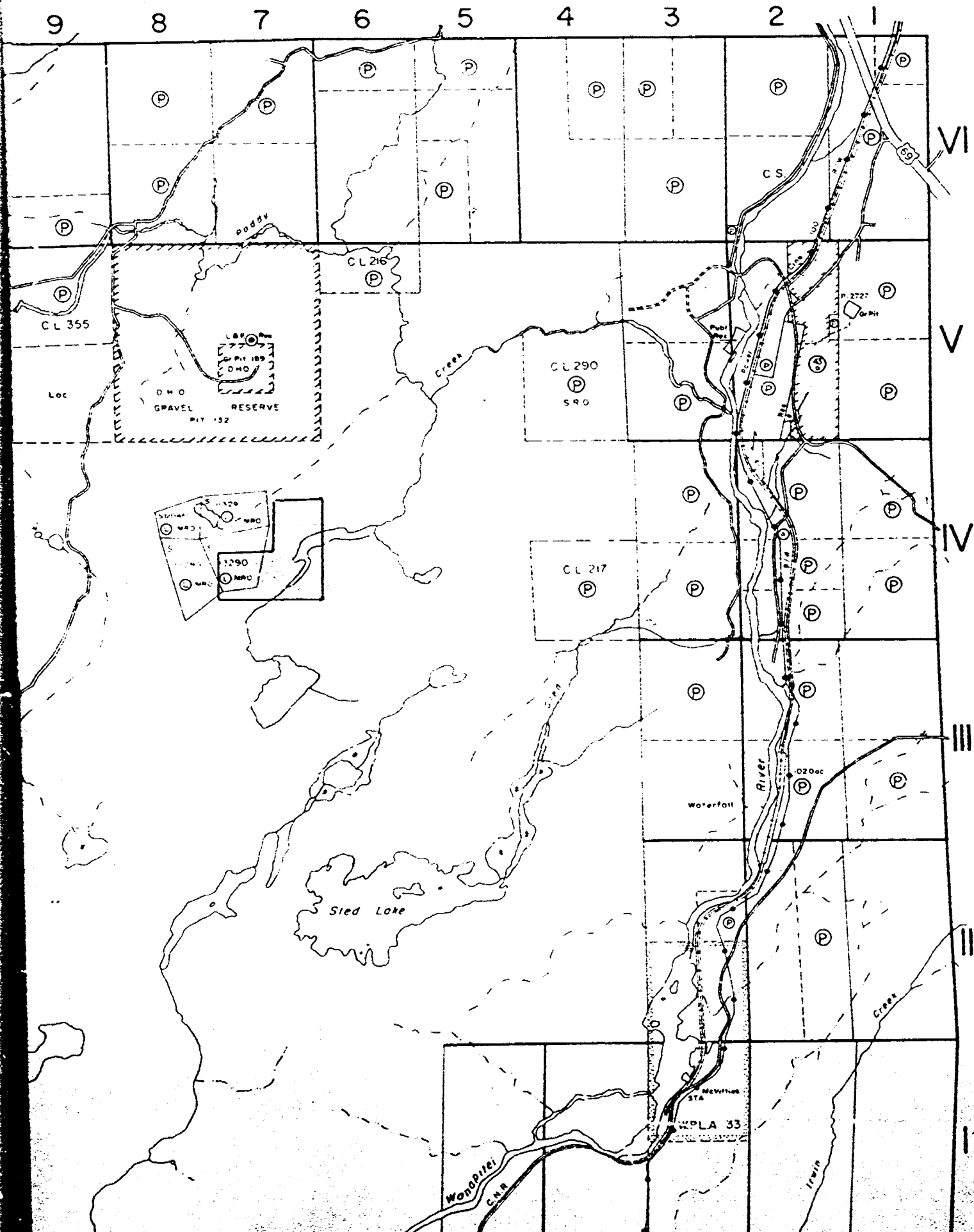
Yours very truly,

A handwritten signature in cursive script, appearing to read "K. M. Hallock".

K. M. Hallock  
Mining Recorder

/rd  
encl.

DILL TWP. - M.762



# SECOND

DISTRICT OF  
SUDBURY

SUDBURY  
MINING DIVISION

SCALE: 1-INCH = 40 CHAINS

## LEGEND

PATENTED LAND	(P)
CROWN LAND SALE	C.S.
LEASES	(L)
LOCATED LAND	Loc.
LICENSE OF OCCUPATION	L.O.
MINING RIGHTS ONLY	M.R.O.
SURFACE RIGHTS ONLY	S.R.O.
ROADS	==
IMPROVED ROADS	==
KING'S HIGHWAYS	==
RAILWAYS	==
POWER LINES	==
MARSH GR MUSKEG	==
MINES	X
CANCELLED	c
PATENTED S.R.O.	o

BURWASH TWP. - M.692

## NOTES

400' surface rights reservation along the shores of all lakes and rivers.

The subdivision of this township into lots and concessions was annulled July 15, 1955, with the exception of lots 1 to 5, con 1, lots 1 to 3, cons 2 to 5, and lots 1 to 9, con. 6.

Areas withdrawn from staking under Section 43 of the Mining Act. (RSO-1970)

File	Date	Disposition
(5) 4201	31-08-72	S.R.O.

MINING LANDS  
DATE OF ISSUE  
APR 3 1973  
MINISTRY  
OF NATURAL RESOURCES

*Primary Gold Mines Ltd.*