

Diamond Drilling



41109NW0058 0012C1 DAVIS

010

Township of DAVIS

Report NO: 24

Work performed by: E.A. Rose

Claim NO	Hole NO	Footage	Date	Note
S 358150	H-1	102.5'	June/75	(1)

Notes:

(1) #48-75

PROPERTY DAVIS TWP. Claim 358150

Core Size: 7/8"

HOLE No: H-1

Location: 311' North of S. Boundary, 39'W of East Boundary

Recovery:

% Length:

Lat:

Long:

Elev:

Started:

June 3, 1975

Completed:

June 24, 75

Logged by:

E. A. Rose

Date:

Assays by:

Drilled by:

Bearing:

South

Dip: Head:

-85°

Interval	Description:	C.A.	N. B.	SAMPLES				ASSAYS						
				from:	to:	No:	length:	AU						
0.0-102.5	GENERAL DESCRIPTION : Mainly quartzite mod. foliated hard & very compact, conchoidal fractures, up to 70% quartz, up to 30% feldspar in places, minor amounts of mica. Inclusions mainly greywacke & granite.													
0.0- 5.0	Impure quartzite granite and greywacke incl. fr. 3.5'-3.8' fracture at C/A 40°, 4.1-4.3 crushed core			1.9	5.0									.02
5.0- 10.0	Granite, crushed core fr. 9.8-10.1			5.0	11.0									.02
10.0- 25.0	Impure quartzite greywacke and granite inclusions-brks. 3 per foot 12.1-12.3 crushed core 16.1-20.0 Occ block core At 20.8 blue quartz vein c/axis 45° 23.9-24.3 possible fault? Occ blue quartz stringers and inclusions in varied directions.			21.0	25.0									.02
25.0- 41.8	As described above, some carbonate stringers, 25.0-29.1 blocky 31.3-31.6 crushed core 32.5-34.0 crushed core, fracture at 34.9' c/axis 50° 38.5-39.0 fault zone ? - 39.0-41.8 Granite fracture at			37.0	41.0									.03
41.8- 60.0	Quartzite impure, some greywacke 44.0-45.6 numerous fractures c/axis 30°-70°, blebby sulphide at 45.8 py cp & arsenopyrite xtals. 46.0-48.0 Blocky minor pyrite and arsenopyrite throughout. Occasional feldspathic eyes (pink) - 50.0-51.0 blocky mod. brecciated 51.4-51.9 lost core - 51.9-53.6 fault - 53.6-55.2 mod. brecciated - 55.2-55.7 lost core - 55.7-56.0 crushed core 57.0-57.7 crushed core - 57.7-60.0 blocky			45.0	50.0									.02
60.0- 75.0	Granitic impure quartzite, minor fol. Sulf. in blebs and disseminated minor fold and brecciated sections - 60.4-60.7 Sand ? 63.5-65.0 blocky in sections - 10% sulfides. 66.0-67.5 10% sulfides - 69.3-70.0 blebby and disseminated sulfides 5% 72.8-73.1 blocky - 73.0-75.0 sand ?			66.0	68.0									.33
75.0 102.5	Impure Quartzite, minor foliation, approx. 69% quartz, granite in places, carbonate stringers, feldspathic eyes, disseminated arsenopyrite and pyrite throughout, numerous fractures. 75.0-80.0 - blocky. and crushed core in places -			73.0	75.0									.03

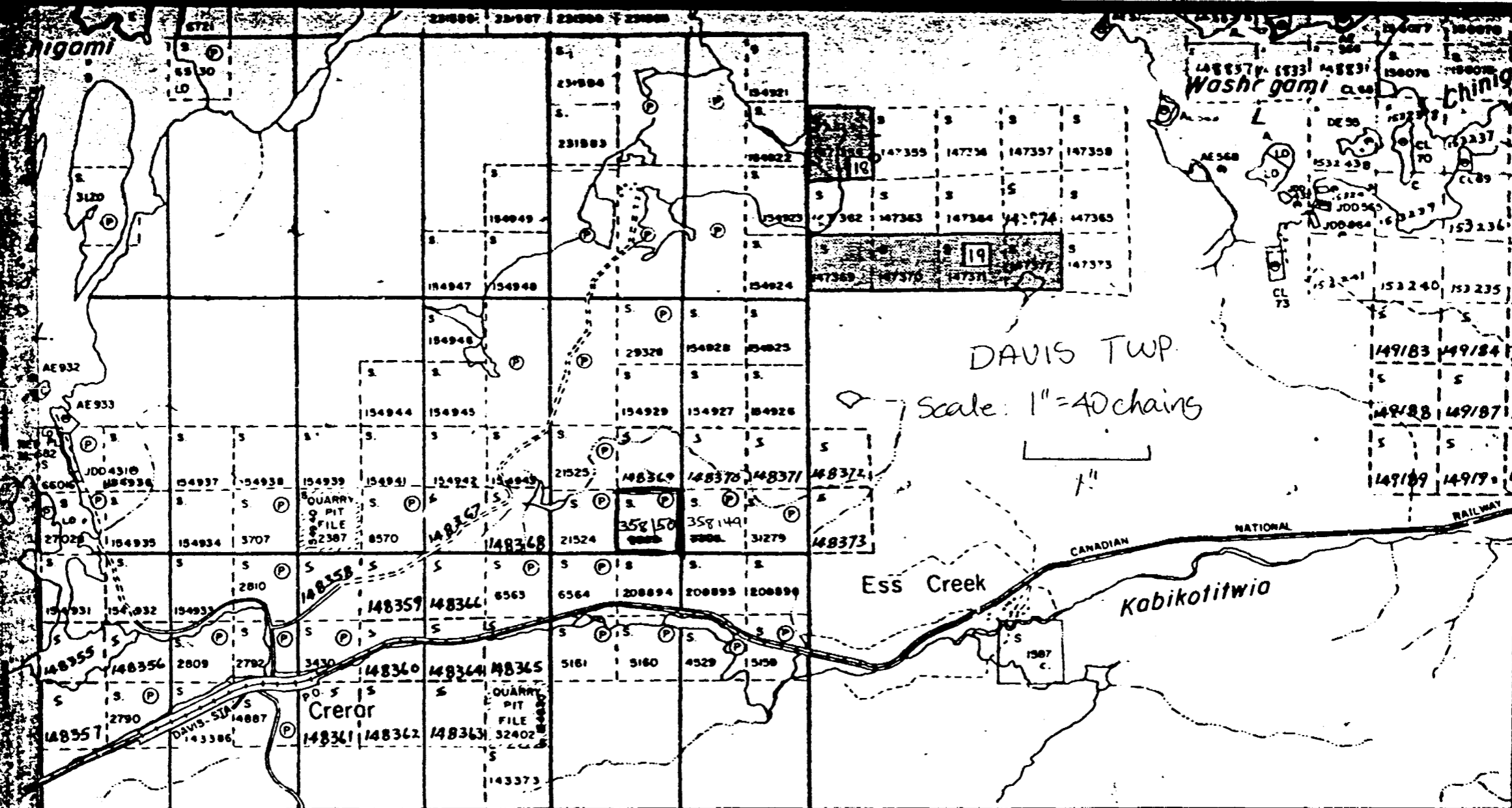
REPLACEMENT COPY

PROJECT: _____ Core Size: _____ HOLE No: _____
 Location: _____ Recovery: _____ % Length: _____
 Lat: _____ Long: _____ Elev: _____ Started: _____ Completed: _____ Logged by: _____ Date: _____
 Assays by: _____ Drilled by: _____ Bearing: _____ Dip: Head: _____

Interval	Description:	C.A.	N. B.	SAMPLES				ASSAYS			
				from:	to:	No:	length:				

82.5-83.4 crushed core, 15% disseminate arsenopyrite xtals.
 83.4-84.0 lost core
 87.3-88.0 lost core
 88.0-89.0 crushed core
 90.2-90.7 sand ?
 92.8-96.1 numerous fractures, blocky in places, disseminated
 arsenopyrite xtals throughout.
 98.8-101.0 as 92.8-96.1

REPLACEMENT COPY



DAVIS TWP.

Loughlin Twp. 41-00-21