



41110NE0015 63.5286 DAVIS

.86

010

Saranac Resources Ltd.  
Copper-Gold Prospect  
Davis Township  
Sudbury Mining Division  
Ontario  
1988 Diamond Drill Program

Date: September 26, 1988

H. Grant Harper, P.Eng.  
Economic Geologist.

Volume Label: Saranac Eng  
Disk No.: 44-3  
Filename: B:\Titlpg\Davis1

OM88-8-C-040

Saranac Resources Ltd.  
Copper-Gold prospect  
Davis Township  
Sudbury Mining Division  
Ontario  
1988 Diamond Drill Program

Introduction

In 1986-87 some 65,000 tons of copper-gold mineralization was mined from the Davis Township property controlled by Groundstar Resources Limited. This ore was processed in the Orofino mill in nearby Scadding Township and the concentrate was shipped to the Noranda smelter at Rouyn, Quebec. All of the ore mined lay above the 315 foot horizon although some minor amounts were left unmined slightly below 315 feet. At this horizon the ore was heavily mixed with an altered (talcose) diabase. Of perhaps greater importance was the observation of a flat fault which offset the ore zone into the footwall for an apparent distance of a few feet. Since no significant amount of ore has been found below the 315 horizon, this fault has given rise to the speculation that a deeper and unseen flat fault may exist and that the downward extension of the ore zone has been offset along this fault. Naturally the zone has been drilled off (rather thoroughly) below the 315 horizon but practically all of this drilling is located vertically beneath the ore zone and only penetrates the footwall slightly. An economic advantage if more ore is located is the fact that the empty stope can be used as a dump for ramp muck thus eliminating the cost of hauling it to surface.

The purpose of the present drill program is to provide access whereby a geophysical search can be made of the areas lying below the 315 horizon and located beyond the strike extremities of the mined out zone and into its relatively unexplored footwall. Therefore this report covers Phase I of a Two Phase exploration program designed to search for copper-gold mineralization below the 300 foot horizon. Phase II which consists of down the hole geophysical surveying will be carried out in January of 1989. This work must be done in the winter months because of the lakes and swamps lying along strike of the mined out ore zone.

1988 Drill Program

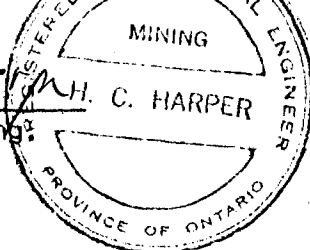
Two BQ size drill holes were sunk, one off each end of the mined out ore zone. Each hole is 650 feet deep. Drill logs and a location map accompany this report. The casing for each hole was drilled into bedrock and each is capped with a screw on cap which requires a 4" pipe wrench to remove. These holes can, if deemed advisable, be deepened at a later date. They should be serviceable for many years.

No mineralization of consequence was encountered in the holes and, indeed, none was expected. Phase II of the program is expected to commence early in

January. The job should require about 5 days of field time and roughly two weeks to prepare reports and make recommendations.

This report is respectfully submitted.

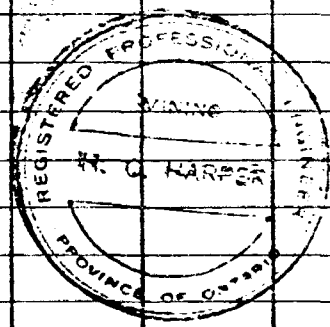
*H. G. Harper*  
\_\_\_\_\_  
H.G. Harper, P.Eng.

A circular professional seal for a Mining Engineer in the Province of Ontario. The seal contains the text "REGISTERED PROFESSIONAL ENGINEER" around the top inner edge, "MINING" in the center, "H. C. HARPER" across the middle, and "PROVINCE OF ONTARIO" around the bottom inner edge.

Volume Label: SaranacEng  
Disk No.: 44-3  
Filename: B:\Report\Davis1

COMPANY: Satanac Resources Ltd. PROPERTY: Devil Tap (Groundstar) HOLE NO. 588-1  
 LATITUDE: 9880 N BEARING: N/A DIP: Vertical STARTED: Aug 16/88 COMPLETED: Aug 20/88 PAGE NO. 1  
 DEPARTURE: 10270 E see Ramp Plan DRILLED BY: Triangle Drilling - Sudbury DEPTH: 650'  
 ELEVATION: shaft collar LOCATION: Lot 10 Con III Devil Tap. Core Size: BXT LOGGED BY: Harper

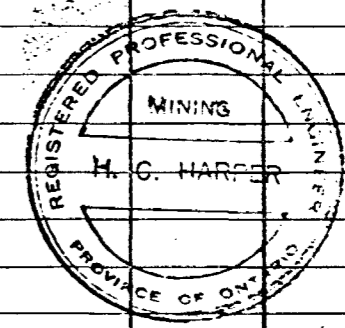
FOOTAGE	DESCRIPTION	SAMPLE FOOTAGES	SAMPLE NO.	WIDTH FT.	ASSAY DATA			
0-8	Casing							
349	Gowgande Formation - tillite + pebbles + cobbles of granite + greenstone - also argillaceous zones 264' - water seam 313-315 - shearing // CA 345-349 Alt <sup>n</sup> Zone - dense shrd CA80°							
358	Nijissing Diabase chloritized to green color, med f.gr.							
394	Alt <sup>n</sup> Zone - shrd - mixture of diabase + Gowgande. wispy orb veinlets							
434	Diabase shrd, altered, talcy							
449	Alt <sup>n</sup> Zone mostly altered Gowgande Fm							
650	Gowgande Formation - argillaceous, very few pebbles							
	END OF HOLE							
<p>Note: Casing has been drilled into solid rock + left in hole. Breky sections have been cemented. Casing is capped + requires 4" pipe wrenches to remove. Hole is accessible for down the hole geophysical survey.</p>								



H. G. Harper

COMPANY: Saranac Resources Ltd. PROPERTY: Davis Twp - Grand Stn HOLE NO. 588-2  
 LATITUDE: 9900 N BEARING: N/A DIP: Vertical STARTED: Aug 22/88 COMPLETED: Aug 27/88 PAGE NO. 1  
 DEPARTURE: 9700 E see Ramp Plan DRILLED BY: Triangle Drilling - Sudburo DEPTH: 650'  
 ELEVATION: LOCATION: Lot 10 Centre Davis Twp. Core Size: BXT LOGGED BY: HARPER.

FOOTAGE	DESCRIPTION	SAMPLE FOOTAGES	SAMPLE NO.	WIDTH FT.	ASSAY DATA			
0-19	Casing							
328	Gowganda Formation - tillite + pebs + cobs							
	48-49 Rusty water seam							
	92' " " "							
	209' 1/16" carb scumlets							
	255 minor shear // CA							
	300-305 Shear + H <sub>2</sub> O							
	318-328 Shear // core							
359	Nipissing Diabase - green cast. chl - m fgr.							
584	Gowganda Fm - mostly argillite							
585	Nipissing Diabase - definitely a sill							
650	Gowganda Fm.							
END OF HOLE								
<p>Note. Casing has been drilled into solid rock + left in hole.            Blocky sections have been cemented.            Casing is capped + requires 4" pipe wrenches to remove.            Hole is accessible far down the Rock geographical survey.</p>								



*H. G. Harper*

N

DDH-588-1

Elevat<sup>n</sup> = #2 Shaft collar = 5.

3' casing

Gowganda F<sup>m</sup>  
tillite with argill seams

\* water seam

\* shearing // CA

349' \* Altered, strd diabase CA 80°  
358' Nipissing Diabase

894' Altered Zone  
Mixture of diabase & Gowganda  
carb veinlet.

Nipissing Diabase

427' Altered Zone - mostly Gowganda  
449'

Gowganda F<sup>m</sup>  
mostly argillaceous. Few  
pebbles or cobbles

Saranac Resources Ltd.

DDH 588-1

1" = 50'

May / 89

Davie Twp. Property

650'



H. C. Harper

N

DDH S88-2

Elevat<sup>n</sup> - #2 Shaft Collar

S.

19' CASING

water seen

Gowganda Fm.  
tillite

xxxx water seen

328'

Nipissing Diabase

359'

Gowganda Fm  
mostly argillite



H. C. Harper

584' → diabase

Gowganda Fm

650'

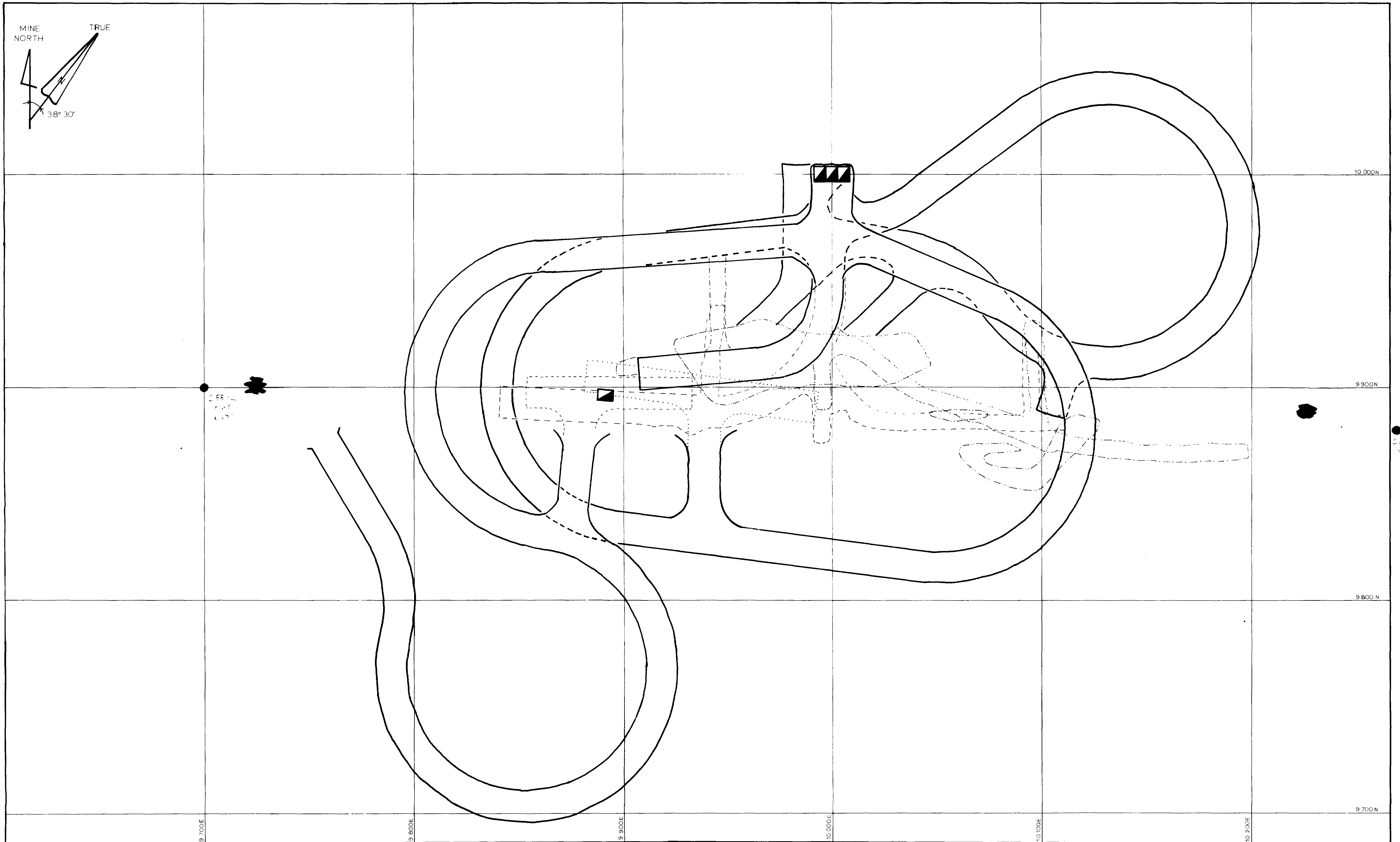
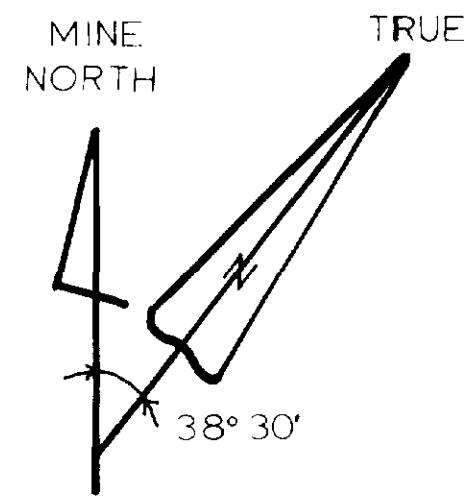
Sarance Recovery Ltd.

DDH S88-2

1" = 50'

May 189

Davis Top. Party



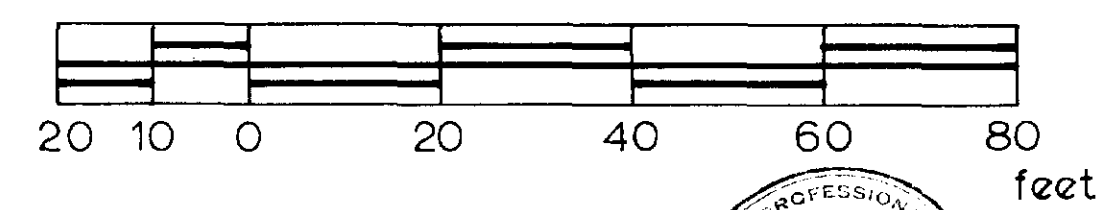
**LEGEND**

- portal
- ramp outline
- 1 compartment shaft
- 3 compartment shaft
- proposed drill collar location

**OUTLINE OF WORKINGS**

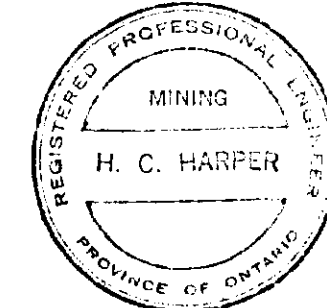
- 65' level
- 125' level
- 190' level
- 250' level
- 315' level ore outline

**SCALE**



SEP 26 1988

*H. G. Harper*



**SARANAC RESOURCES LTD.**

DAVIS TWP. PROPERTY  
ONTARIO 63.5286

**PLAN OF UNDERGROUND WORKINGS**

M<sup>C</sup>CANCE CONSULTING SERVICES

NOV. 30, 1987

S. J. M<sup>C</sup>C.

Dwg. No. 1

