



41118NE0193 0014 SCADDING

010

# Diamond Drilling

Township OF SCADDING

Report NO: 17

Work performed by: GULF MINERALS CANADA LTD.

Claim NO	Hole NO	Footage	Date	Note
S 346915	S-1	101'	Oct/73	(1)
	S-2	47'	Oct/73	(1)
	S-3	266'	Oct/73	(1)
	S-4	500'	Oct/73	(1)
	S-5	182'	Oct/73	(1)
	S-6	188'	Oct/73	(1)
	S-7	157'	Oct/73	(1)
	S-8	134'	Oct/73	(1)
	S-9	190'	Oct/73	(1)
	S-10	153'	Nov/73	(1)
	S-11	295'	Nov/73	(1)
	S-12	111'	Nov/73	(1)
	S-13	192'	Nov/73	(1)
	S-14	194.5'	Aug/74	(2)
	S-15	187.0'	Aug/74	(2)
	S-16	338.0'	Aug/74	(2)
	S-17	52.0'	Aug/74	(2)
	S-18	192.0'	Aug/74	(2)
	S-19	218.0'	Aug/74	(2)
	S-20	223.0'	Sept/74	(2)
	S-21	177.0'	Sept/74	(2)

**Notes:**

(1) 40/74

4097.5

Diamond Drilling

Township of SCADDING

Report NO: 17

Work performed by: Gulf Minerals Canada Ltd.

Claim NO	Hole NO	Footage	Date	Note
S 346915	S-22	272.0'	Sept/74	(2)
	S-23	111.0'	Sept/74	(2)
	S-24	220.0'	Sept/74	(2)
	S-25	190.0'	Sept/74	(2)
	S-26	201.0'	Sept/74	(2)
	S-27	201.0'	Sept/74	(2)
	S-28 •	208.0'	Sept/74	(2)
	S-29	117.0'	Oct/74	(2)
	S-30	184.0'	Oct/74	(2)
	S-31	205.0'	Oct/74	(2)
	S-32	106.0'	Oct/74	(2)
	S-33	178.0'	Oct/74	(2)
	S 373196	S-45 •	307.0'	Sept/75
S-46 •		317.0'	Oct/75	(3)
S-47 •		348.0'	Oct/75	(3)
S-48 ✕		310.0'	Oct/75	(3)
S-49		298.0'	Oct/75	(3)
S-50		358.0'	Oct/75	(3)
S 359344	S-51	268.0'	Oct/75	(3)
S 359360	S-52	258.0'	Oct/75	(3)

Notes:

(2) #53-75

(3) #94-75

---

Total: 41 DH 8754.5'







Gulf Minerals Canada Limited  
DIAMOND DRILL RECORD

D.D.H. NO. S-2  
SHEET 1 OF 1

PROPERTY Scadding Township - Ontario  
LATITUDE 3+03N  
LONGITUDE 5+62W  
ELEVATION + 1 foot (relative to S-3,S-4)

BEARING—TRUE Vertical  
DIP -90°  
FINAL DEPTH 47 feet  
CORE SIZE BQ

DATE STARTED October 19, 1973  
DATE COMPLETED October 19, 1973  
DRILLED BY Midwest  
LOGGED BY P. C. McLean

DATE: November 14, 1973 SIGNED *P. C. McLean*

DEPTH FEET	F'TAGE CORED	F'TAGE REC'D	FORMATION	DESCRIPTION	DEPTH	BED'G & FOLIA	REMARKS SAMPLES ETC.
0 - 4			Overburden	Casing			
4.0 - 25.5			Chloritic zone	Dark green, some faint bedding at 45° to core, irregular inclusions of white quartzite throughout. Local, disseminated sulphides.			
25.5 - 35.9			Quartzite	Reddish brown, bedding at 20° to core.			
35.9 - 42.0			Quartzite	Dark grey, impure, locally brecciated with some pink fragments.			
42.0 - 47.0			Quartzite	Reddish brown, locally brecciated.			



Gulf Minerals Canada Limited  
DIAMOND DRILL RECORD

D.D.H. NO. S-3  
SHEET 1 OF 3

PROPERTY Scadding Township - Ontario  
LATITUDE 3+78N  
LONGITUDE 5+62W  
ELEVATION 0 Feet

BEARING -- TRUE 180°  
DIP -45°  
FINAL DEPTH 266 Feet  
CORE SIZE BQ

DATE STARTED October 20, 1973  
DATE COMPLETED October 21, 1973  
DRILLED BY Midwest  
LOGGED BY P. C. McLean

DATE: November 14, 1973

SIGNED *P. C. McLean*

DEPTH FEET	F'TAGE CORED	F'TAGE REC'D	FORMATION	DESCRIPTION	DEPTH	BED'G & FOLIA	REMARKS SAMPLES ETC.
0 - 3			Overburden				
3.0 - 9.0			Red Quartzite	Pink to reddish brown, fine grained.			
9.0 - 19.6			Grey Quartzite	Dark grey impure, poorly bedded at 70° to core axis 14.6' Quartzite altered, crushed in appearance locally, fair cubic pyrite.			
19.6 - 48.0			Reddish Quartzite	Reddish to pink, locally brecciated, some py. throughout. 22.5 - 26.0 Sheared, possible fault. 45.0 - 46.2 Brecciated pink quartzite, minor pyrite.			
48.0 - 62.0			Quartzite	Light to dark grey, some bedding at 60° to the core axis. Some disseminated pyrite. 58.6 - 59.9 Breccia. Some py. Minor po. and chalco.			
62.0 - 69.0			Quartzite	Pale, pinkish grey in colour, altered in appearance.			

DIAMOND DRILL RECORD—CONTINUATION SHEET

D.D.H. NO. S-3

SHEET 2 OF 3

DEPTH FEET	F'TAGE CORED	F'TAGE REC'D	FORMATION	DESCRIPTION	DEPTH	BED'G & FOLIA	REMARKS SAMPLES ETC.
69.0 - 75.0			Quartzite	Crushed and brecciated in appearance, some narrow chloritic sections in irregular patches.			
75.0 - 78.5			Quartzite	Grey, relatively fresh, no sulphides.			
78.5 - 103.5			Quartzite	Breccia zone, crushed in appearance, some chloritic patches up to several inches.			
103.5 - 208.8			Quartzite	Dark grey, massive, some bedding at 80°-90° to the core axis. Locally some disseminated py. Occasional crushed and altered sections.			
				125.0 - 125.6 Crushed, some cubic py.			
				144.8 - 146.0 Altered quartzite, some cubic py.			
				168.0 Bedding at 60° to the core.			
				178.5 - 179.0 Crushed section, cubical pyrite.			
				194.9 - 195.3 Altered section, 10% cubic py.			
				201.0 Bedding at 45° to the core.			







Gulf Minerals Canada Limited  
DIAMOND DRILL RECORD

D.D.H. NO. S-4  
SHEET 1 OF 3

PROPERTY Scadding Township - Ontario  
LATITUDE 3+78N  
LONGITUDE 5+62W  
ELEVATION 0 Feet

BEARING - TRUE Vertical  
DIP -90°  
FINAL DEPTH 500'  
CORE SIZE BQ

DATE STARTED October 21, 1973  
DATE COMPLETED October 29, 1973  
DRILLED BY Midwest  
LOGGED BY P. C. McLean, E. R. Craigie

DATE: October 29, 1973 SIGNED *E. R. Craigie*

DEPTH FEET	F'TAGE CORED	F'TAGE REC'D	FORMATION	DESCRIPTION	DEPTH	BED'G & FOLIA	REMARKS SAMPLES ETC.
0 - 2			Overburden				
2 - 12			Red Quartzite	White to reddish in colour, fine grained 4.6 one inch quartz stringer			
12.0 - 21.7			Grey Quartzite	Dark grey, some bedding at 45° to core axis.			
21.7-24.2			Red Quartzite	Pinkish coloured, very fine grained.			
24.2-54.7			Grey Quartzite	Some well bedded sections, bedding at 45° to the core axis, locally a little disseminated py.			
54.7-59.1			Quartzite	Light grey, very fine grained bed contains vein quartz and carbonate. Well mineralized with pyrite.			
59.1 - 176.3			Grey Quartzite	Mostly dark grey with some light grey to pinkish beds.	65.0'	30°	
				114.6' - 115.6 Brecciated, minor pyrrhotite	82.0'	30°	
				123.0' - 125.0 Brecciated, quartzite & chloritic fragments	103.0'	30°	
					108.0	45°	
176.3 - 180			Pinkish to Grey Quartzite	Pink to grey, locally brecciated	130	50°	
					150	40°	

DIAMOND DRILL RECORD—CONTINUATION SHEET

D.D.H. NO. S-4

SHEET 2 OF 3

DEPTH FEET	F'TAGE CORED	F'TAGE REC'D	FORMATION	DESCRIPTION	DEPTH	BED'G & FOLIA	REMARKS SAMPLES ETC.
180 - 191			Grey Quartzite	Light grey, medium grained, foliated, hard and blocky.			
				181 - 183 Brecciated with pyrite, pyrrhotite, minor chlorite.			
				185 - 186 Very blocky. Sheared with slickensides.			
191 - 261			Dirty Quartzite to Greywacke	Dark grey to greenish grey, medium to coarse grained, foliated, poorly bedded to massive, composition quartz, chlorite, minor feldspars.	214	48°	
				193 - 194 Brecciated.			
				198 1/2 - 199 Sheared.			
				215 - 217 Brecciated, with minor pyrite.			
				220 - 222 Brecciated.			
				226 1/2 - 228 Brecciated, fragments up to 1 inch in diameter.			
				244 - 251 1/2 Breccia, light pinkish quartzite fragments up to one inch, greenish matrix. 1-5% pyrrhotite.	239	50°	
				253 - 254 Brecciated.			
261 - 290			Dirty Quartzite	Light green to grey, 60-70% quartz, 30% feldspars, minor chlorite, poorly bedded to massive.			
				261 - 262 Breccia, minor pyrite, 2" fragments of pink quartzite and greenish quartzite (?).			
				263 - 264 Breccia, 1% pyrrhotite.			
				280 - 282 Breccia, up to 50% pyrite between 281 1/2 - 282.			
				287 - 288 Shear zone. Fractures with slickensides			



**GULF MINERALS COMPANY  
DIAMOND DRILL RECORD**

D.D.H. NO. S-5  
SHEET 1 OF 1

PROPERTY Scadding Township, Ontario  
LATITUDE 4+00N  
LONGITUDE 6+50W  
ELEVATION +16 feet (relative to S-3,S-4)

BEARING—TRUE 180°  
DIP -45°  
FINAL DEPTH 182'  
CORE SIZE BQ

DATE STARTED October 24, 1973  
DATE COMPLETED October 25, 1973  
DRILLED BY Midwest  
LOGGED BY E.R. Craigie

DATE: October 25, 1973 SIGNED E.R. Craigie

DEPTH FEET	F'TAGE CORED	F'TAGE REC'D	FORMATION	DESCRIPTION	DEPTH	BED'G & FOLIA	REMARKS SAMPLES ETC.
-4			Overburden				
4-45 1/2			Quartzite	Pink, massive hard and dense. Contains minor zones of fracturing with chloritic material. Interval is very blocky. Chloritic fracture zones contain some pyrite.			
				37'4" - 45'6" Chloritic breccia zone with up to 5% pyrite			
45 1/2-182			Quartzite	Light grey, weakly bedded to massive, foliated, coarse to medium grained; composition varies from clean quartzite to meta-greywacke, calcareous in part, increasing to base; minor pyrite - disseminated and as coating on fracture surfaces.	48 115 153	45° 60° 75°	
				51.5 - 53 very blocky, fracture surfaces with talkose slickensides; fracturing parallel to core axis.			
				55 - 56 weakly brecciated with some pyrite			
				61.5 - 63 Breccia zone, chloritic with pyrite			
				63 - 82.5 Blocky, slickensides on fracture surfaces, many fractures parallel to core axis.			
				86-87 Light grey, massive quartzite, with rhombohedrons of carbonate (1/8 to 1/4 inch xstals)			
				93 1/2 - 103 Blocky zone, fractures with slickensides. Most fractures nearly parallel to the core axis.			
				103 - 106 Breccia zone, with minor pyrite and pyrrhotite.			
				152 - 152 1/2 Very blocky, slickensides on fractures.			
				157 - 157 1/2 Very block, as above.			
				171 - 173 1/2 Blocky, as above.			
				END OF HOLE			

GULF MINERALS COMPANY

DIAMOND DRILL RECORD

D.D.H. NO. S-6

SHEET

1 OF 1

PROPERTY SCADDING TOWNSHIP, Ontario  
 LATITUDE 7+50W  
 LONGITUDE 4+00N  
 ELEVATION +15 feet (relative to S-3, S-4)

BEARING—TRUE 180°  
 DIP -45°  
 FINAL DEPTH 188 feet  
 CORE SIZE BQ

DATE STARTED October 25, 1973  
 DATE COMPLETED October 26, 1973  
 DRILLED BY Midwest  
 LOGGED BY E. R. Craigie

DATE: October 26, 1973

SIGNED *E. R. Craigie*

DEPTH FEET	F'TAGE CORED	F'TAGE REC'D	FORMATION	DESCRIPTION	DEPTH	BED'G & FOLIA	REMARKS SAMPLES ETC.
-10			Overburden				
10-56			Grey Quartzite	Light grey, medium grained, hard, dense, foliated, poorly bedded to massive. Interval blocky. Minor pyrite mineralization in some zones (less than 1%). 10 - 26 Very blocky. Some slickensides on fractures, many fractures parallel to core axis.			
56-80 1/2			Quartzite: brecca	Light pink to white quartzite with green chlorite in fractures. Some pyrite associated with the chlorite (up to 5%). A relatively hard, dense unit.			
80 1/2 - 188			Grey Quartzite:	Light grey, medium grained, hard, dense, foliated. Bedded to massive; generally blocky throughout, some zones with pyrite. Calcareous in part, increasing to base.	39	87°	
				81 1/2 - 82 1/2 Blocky, fractures with slickensides	97	55°	
				97 - 98 Brecciated, very minor chlorite (less than 1%)	142	35°	
				109 - 111 Very blocky, slickensides, some fractures parallel to core axis.			
				121 - 122 Brecciated with 1% pyrite.			
				130 - 134 Very blocky, fractures with slickensides.			
				152 - 166 Quartzite with breccia zones containing up to 20% pyrite. Breccia is chloritic. Fragments are up to 1/2 inch in diameter.			
				174 - 175 Breccia, chloritic with pyrite.			
				181 - 188 Blocky.			



Gulf Minerals Canada Limited  
DIAMOND DRILL RECORD

D.D.H. NO. S-7  
SHEET 1 OF 1

PROPERTY SCADDING TOWNSHIP, Ontario  
LATITUDE 4+00N  
LONGITUDE 7+50W  
ELEVATION 15 feet (relative to S-3,S-4)

BEARING—TRUE 180°  
DIP -32°  
FINAL DEPTH 157 feet  
CORE SIZE BQ

DATE STARTED October 26, 1973  
DATE COMPLETED October 27, 1973  
DRILLED BY Midwest  
LOGGED BY E. R. Craigie

DATE: October 28, 1973 SIGNED *E. R. Craigie*

DEPTH FEET	F'TAGE CORED	F'TAGE REC'D	FORMATION	DESCRIPTION	DEPTH	BED'G & FOLIA	REMARKS SAMPLES ETC.
0-14			Overburden				
14-157			Grey Quartzite:	Light grey, bedded to massive, medium to coarse grained, foliated; composition - quartz grains with variable chlorite, pyrite and pyrrhotite. Calcareous in part, increasing to base. Interval is blocky and sheared throughout.	34'	85°	
				14-44 Very blocky, fractures with slickensides, shearing at 27-30, 33-34, 38-40.	81	69°	
				44 1/2 - 50. Brecciated, fragments 1/4 to 1/2 inch, about 2% pyrite, chloritic in part.			
				53 - 56. Blocky, fractures with slickensides, about 2% pyrite and chalcopyrite (minor)			
				56 - 73 Light grey quartzite, brecciated and sheared, shearing intense at 60-70. Fractures with slickensides.			
				85 - 88. Blocky. Fractures with slickensides.			
				90 - 92. Breccia. Up to 2% pyrite and pyrrhotite.			
				105 - 113. Breccia.			
				107 - 128. Brecciated and sheared, 10-15% pyrite.			
				141 - 142. Sheared.			
				145 - 149. Sheared.			
				149 - 150. Heavy pyrite, up to 50% of core.			
				156 - 157. Sheared.			





**Gulf Minerals Canada Limited**  
**DIAMOND DRILL RECORD**

D.D.H. NO. S-9  
SHEET 1 OF 2

PROPERTY Scadding Township - Ontario  
LATITUDE 3+55N  
LONGITUDE 3+00W  
ELEVATION -39 ft. (relative to S-3,S-4)

BEARING - TRUE 180°  
DIP -90°  
FINAL DEPTH 190 feet  
CORE SIZE BQ

DATE STARTED October 31, 1973  
DATE COMPLETED November 1, 1973  
DRILLED BY Midwest  
LOGGED BY E. R. Craigie

DATE: November 1, 1973 SIGNED E. R. Craigie

DEPTH FEET	F'TAGE CORED	F'TAGE REC'D	FORMATION	DESCRIPTION	DEPTH	BED'G & FOLIA	REMARKS SAMPLES ETC.
0-10			Overburden				
10 - 53 1/2			Grey Quartzite	Light grey, hard, dense, massive, medium grained, foliated.	35'	47°	
53 1/2 - 62 1/2			Chloritic	Dark green, massive, dense, 1% sulphides (py., Po.) 56 1/2 - 57 75% pyrite, vuggy.			
62 1/2 - 96			Grey Quartzite	Light grey, poorly bedded to massive, generally as above, quartzite unit. Contains variable pyrite.	83'	55°	
				70 - 73 Chloritic, up to 5% sulphides.			
				86 - 96 Brecciated in part, up to 20% pyrite.			
96 - 122			Dirty Quartzite	Dark grey, massive, hard, dense, with minor pyrite (up to 2%) 103 - 105 Blocky, fractures with slickensides.			
122 - 144			Chloritic zone	Light grey to dark green, massive, siliceous in part. Pyrite, pyrrhotite, chalcopyrite up to 40% in some zones.	124'	55°	
				122 - 123 1/2 Strongly chloritic, 1% sulphides.	143'	65°	







**Gulf Minerals Canada Limited**  
**DIAMOND DRILL RECORD**

D.D.H. NO. S-10  
SHEET 1 OF 2

PROPERTY Scadding Township - Ontario  
LATITUDE 4+00W  
LONGITUDE 3+55N  
ELEVATION -16 1/2' (relative to S-3, S-4)

BEARING—TRUE 180°  
DIP -45°  
FINAL DEPTH 153 feet  
CORE SIZE BQ

DATE STARTED November 1, 1973  
DATE COMPLETED November 2, 1973  
DRILLED BY Midwest  
LOGGED BY E. R. Craigie

DATE: November 2, 1973 SIGNED E. R. Craigie

DEPTH FEET	F'TAGE CORED	F'TAGE REC'D	FORMATION	DESCRIPTION	DEPTH	BED'G & FOLIA	REMARKS SAMPLES ETC.
0 - 5 1/2			Overburden				
5 1/2 - 21			Grey Quartzite	Light grey to reddish, dense, brecciated and sheared throughout. Fragments up to several inches in diameter. Some fractures are rusty. Pyrite occurs throughout (1 - 10%)			
21 - 40			Chloritic zone	Light grey to green, dense, massive, siliceous in most zones. Sulphides (py., po., chalco) variable from 1 - 5%	22'	45°	
				23 - 33 1/2 Hard, dense, very siliceous, about 5% po.			
				33 1/2 - 38 Chloritic, massive pyrrhotite.			
40 - 54 1/2			Grey Quartzite	Light grey to reddish, hard, dense, massive, brecciated in part with 1 - 5% sulphides (pyrite).			
				44 - 53 Brecciated fragments up to several inches, rusty and slightly chloritic at 48 - 48 1/2.			
54 1/2 - 99			Chloritic zone	Light to dark green, massive to bedded, foliated, dense, medium to fine grained. Composition is variable from mainly chloritic to siliceous. Pyrite (py.) pyrrhotite (po.) and chalcopyrite (chalco.) occur in variable amounts throughout.	56'	62°	
					76'	58°	
					89'	60°	





**Gulf Minerals Canada Limited**  
**DIAMOND DRILL RECORD**

D.D.H. NO. S-11  
SHEET 1 OF 2

PROPERTY SCADDING TOWNSHIP - Ontario  
LATITUDE 3+55N  
LONGITUDE 4+00W  
ELEVATION - 16 1/2 feet (relative to Holes S-3, S-4)

BEARING—TRUE Vertical  
DIP -90°  
FINAL DEPTH 295 feet  
CORE SIZE BQ

DATE STARTED November 2, 1973  
DATE COMPLETED November 4, 1973  
DRILLED BY Midwest  
LOGGED BY E. R. Craigie

DATE: November 4, 1973

SIGNED E. R. Craigie

DEPTH FEET	F'TAGE CORED	F'TAGE REC'D	FORMATION	DESCRIPTION	DEPTH	BED'G & FOLIA	REMARKS SAMPLES ETC.
0 - 4			Overburden				
4 - 278 1/2			Grey Quartzite	Light to dark grey, massive to poorly bedded, hard, dense, foliated, medium to coarse grained. Composition 70-95% quartz grains, minor feldspars and chlorite. Pyrite and pyrrhotite occur in some zones up to 20%. Unit is blocky and sheared throughout.			
				4 - 94 Light grey to reddish, hard, dense, massive, brecciated in part.			
				17 - 19.5 Minor pyrite (less than 1%)			
				34 - 38 5% pyrite, sheared.			
				64 - 65 Sheared.			
				77.5 - 79 Up to 30% pyrite			
				94 - 278.5 Medium to dark grey quartzite. Hard, massive to poorly bedded. Brecciated and sheared throughout.			
				94 - 97 Sheared and blocky.			
				100 - 112 1-5% pyrite, blocky and sheared.	116	30°	
				133 - 138 Blocky and sheared. Some fractures. Parallel to the core axis.			







Gulf Minerals Canada Limited  
DIAMOND DRILL RECORD

D.D.H. NO. S-13  
SHEET 1 OF 2

PROPERTY Scadding Township - Ontario  
LATITUDE 3+75N  
LONGITUDE 2+00W  
ELEVATION -50 feet (relative to S-3,S-4)

BEARING—TRUE 180°  
DIP -55°  
FINAL DEPTH 192 feet  
CORE SIZE BQ

DATE STARTED November 5, 1973  
DATE COMPLETED November 7, 1973  
DRILLED BY Midwest  
LOGGED BY E. R. Craigie

DATE: November 7, 1973

SIGNED E. R. Craigie

DEPTH FEET	F'TAGE CORED	F'TAGE REC'D	FORMATION	DESCRIPTION	DEPTH	BED'G & FOLIA	REMARKS SAMPLES ETC.
J - 8			Overburden				
8 - 91			Grey Quartzite	Light to dark grey, hard, dense. Massive to poorly bedded, medium to coarse grained, foliated. Composition: 70-90% quartz, minor chlorite and feldspar. Sulphides less than 1%.			
				19 - 19.5 Sheared, blocky.			
				23.5 - 24.5 Sheared, blocky.			
				32 - 41 Light grey to pink quartzite, brecciated.			
				49 - 50 Sheared and blocky.			
				52 - 52.5 Brecciated, minor chlorite.			
				61 - 64 Blocky, sheared.			
				70 - 73 Blocky, sheared.			
				83 - 84 Blocky, sheared, fractures parallel to core axis.			
				87 - 91 Blocky, sheared, two feet of lost core.			
91 - 111			Chloritic zone	Light to dark green, massive to poorly bedded, brecciated throughout.			
				94 - 96 50% vuggy pyrite, brecciated.			





DRILLING SUMMARY

- (1) Diameter of core: AQ, 1-1/16 inches
- (2) Owner/Operator of Drill Rig: Hosking Diamond Drilling  
20 Tardif Street  
Rouyn, Quebec
- (3) Core Storage: at Gulf Minerals warehouse - Toronto
- (4) Total Footage: 3,774 feet
- (5) Total days of Assessment Work: 3,735 days  
(1903 days are being reported)
- (6) Work Assignment:  
Claim No. S. 346915 - 1550 days.  
Claim No. S. 359360 - 21 days.

53/75 Scadding Top.

SUDBURY PROJECT - SCADDING TOWNSHIP DRILL PROGRAM

HOLE NO.	DIP	BEARING	DATE STARTED	DATE COMPLETE	LENGTH	DAYS OF ASSESSMENT WORK
S-14	-45°	180°	Aug. 10/74	Aug. 11/74	194'	194
S-15	-90°	-	Aug. 11/74	Aug. 12/74	187'	187
S-16	-90°	-	Aug. 15/74	Aug. 20/74	338'	338
S-17	-90°	-	Aug. 22/74	Aug. 22/74	52'	13
S-18	-90°	-	Aug. 25/74	Aug. 26/74	192'	192
S-19	-90°	-	Aug. 27/74	Aug. 28/74	218'	218
S-20	-90°	-	Sept. 3/74	Sept. 5/74	223'	223
S-21	-90°	-	Sept. 6/74	Sept. 7/74	177'	177
S-22	-90°	-	Sept. 9/74	Sept. 10/74	272'	272
S-23	-45°	0°	Sept. 11/74	Sept. 12/74	111'	111
S-24	-45°	0°	Sept. 17/74	Sept. 18/74	220'	220
S-25	-60°	0°	Sept. 21/74	Sept. 22/74	190'	190
S-26	-75°	0°	Sept. 22/74	Sept. 24/74	201'	201
S-27	-45°	0°	Sept. 25/74	Sept. 25/74	201'	201
S-28	-30°	270°	Sept. 26/74	Oct. 4/74	208'	208
S-29	-45°	270°	Oct. 6/74	Oct. 7/74	117'	117
S-30	-60°	0°	Oct. 9/74	Oct. 10/74	184'	184
S-31	-60°	0°	Oct. 16/74	Oct. 17/74	205'	205
S-32	-45°	0°	Oct. 18/74	Oct. 18/74	106'	106
S-33	-90°	-	Oct. 18/74	Oct. 19/74	178'	178

TOTAL DAYS OF ASSESSMENT WORK - 3,735  
 (1903 days being reported)

GULF MINERALS COMPANY

DIAMOND DRILL RECORD

D.D.H. NO. S-14  
SHEET 1 OF 1

PROPERTY SCADDING TOWNSHIP - SUDBURY PROJECT  
LATITUDE 1+40N  
LONGITUDE 2+90W  
ELEVATION 28'

BEARING—TRUE 180°  
DIP -45°  
FINAL DEPTH 194.5 ft.  
CORE SIZE AQ

DATE STARTED August 10, 1974  
DATE COMPLETED August 11, 1974  
DRILLED BY Hosking Drilling  
LOGGED BY E. R. Craigie

DATE: August 12, 1974 SIGNED Eric R. Craigie

DEPTH FEET	F'TAGE CORED	F'TAGE REC'D	FORMATION	DESCRIPTION	DEPTH	BED'G & FOLIA	REMARKS SAMPLES ETC.
0 - 22			Overburden				
22 - 40 1/2			Espanola	Interbedded limestone and greywacke. Light to medium grey, generally hard, dense. Contact with lower quartzite unit occurs at 40.5 ft. and is a brecciated fault zone.			Bedding angle about 90° to core axis, minor folds common
40 1/2 - 42			Fault	Breccia zone			
42 - 107 1/2			Serpent	Quartzite. Light to dark grey with some pinkish zones. Blocky throughout. Medium grained, hard, massive to poorly bedded. 50 - 55 Greywacke beds. 78 - 79 Massive py. to 75% of core 90 - 107 Py. mineralization, up to 15% of core in irregular intervals. 106 - 107 1/2 Breccia zone, contains up to 25% py. and po.			
107 1/2 - 194 1/2			Espanola	Interbedded limestone and greywacke beds, similar to above unit. 115 - 125 Magnetite beds comprise up to 30% of the core.	142'	60°	Bedding angle



GOETZ MINERALS COMPANY  
DIAMOND DRILL RECORD

D.D.H. NO. S-16  
SHEET 1 OF 1

PROPERTY SCADDING TOWNSHIP - SUDBURY PROJECT  
LATITUDE 5+10N  
LONGITUDE 7+40W  
ELEVATION 72'

BEARING—TRUE 120°  
DIP -90°  
FINAL DEPTH 338 ft.  
CORE SIZE AQ

DATE STARTED August 15, 1974  
DATE COMPLETED August 20, 1974  
DRILLED BY Hosking Drilling  
LOGGED BY E. R. Craigie

DATE: August 18, 1975 SIGNED: *Eric R. Craigie*  
Eric R. Craigie

DEPTH FEET	F'TAGE CORED	F'TAGE REC'D	FORMATION	DESCRIPTION	DEPTH	BED'G & FOLIA	REMARKS SAMPLES ETC.
0 - 4			Overburden				
4 - 235			Serpent	Quartzite, light to medium grey, medium to fine grained, hard, dense, poorly bedded to massive. Blocky throughout interval with some brecciated zones. Contains minor py. and po. 20 - 21 Rusty, slickensided fracture zone 27 - 30 Slickensided, blocky 64 - 65 Brecciated 68 - 69, 87 - 88 Brecciated with slickensides on fracture surfaces. 88-1/2 - 94 Breccia zone, pink to light grey quartzite fragments. 93 - 93-1/2 contains up to 25% py. in chloritized breccia. 129 - 130 Brecciated 136 - 139, 152 - 159 Greywacke beds, blocky			
235 - 239			Serpent	Greywacke. Dark grey, medium to fine grained, massive to poorly bedded.			
239 - 251			Serpent	Quartzite, medium grey	241	20°	Bedding angle
251 - 271			Serpent	Greywacke. Similar to upper unit			
271 - 335-1/2			Serpent	Quartzite. Grey to greenish grey. Brecciated in part. Contact with lower limestone unit is a breccia zone.			
335-1/2 - 338			Espanola	Limestone, mottled dark and light grey, poorly bedded, medium grained, foliated, dense. Composition varies - up to 30% calcite, 5 - 15% biotite, 40 - 60% quartz, some feldspar.	333	15°	Bedding angle



GULF MINERALS COMPANY  
DIAMOND DRILL RECORD

D.D.H. NO. S-18  
SHEET 1 OF 1

PROPERTY SCADDING TOWNSHIP - SUDBURY PROJECT  
LATITUDE 2+60N  
LONGITUDE 7+40W  
ELEVATION 58'

BEARING—TRUE 180°  
DIP -90°  
FINAL DEPTH 192 ft.  
CORE SIZE AQ

DATE STARTED August 25, 1974  
DATE COMPLETED August 26, 1974  
DRILLED BY Hosking Drilling  
LOGGED BY E. R. Craigie

DATE: July 24, 1975 SIGNED *Eric R. Craigie*  
Eric R. Craigie

DEPTH FEET	F'TAGE CORED	F'TAGE REC'D	FORMATION	DESCRIPTION	DEPTH	BED'G & FOLIA	REMARKS SAMPLES ETC.
0 - 6			Overburden				
6 - 7			Serpent	Chloritic zone. Dark green, contains about 80% chlorite, 10% grey vein quartz, 1% pyrite.			
7 - 8-1/2			Serpent	Quartzite. Light pink to reddish coloured. Contains 10 - 15% chlorite, 5% vein quartz, minor po., py.			In chloritic zones the intervals of strongest sulphide mineralization have vuggy texture
8-1/2 - 15			Serpent	Chloritic zone. Similar to upper unit. About 75% chlorite, 10% po. and py., minor arsenopyrite.			
15 - 29			Serpent	Quartzite. Light grey. Contains 5 - 10% chlorite. 25 - 29 Vuggy texture with up to 15% sulphides.			
29 - 39			Serpent	Chloritic zone. Similar to upper units. About 70% chlorite, 5 - 30% py. and po. Some grey vein quartz.			
39 - 109			Serpent	Quartzite. Light grey, medium to fine grained, massive to poorly bedded, hard, dense, brecciated and sheared in some intervals. 39 - 43 Up to 10% chlorite, some py. and po. especially at 42'.	55	40°	Bedding angle
109 - 121			Serpent	Greywacke. Dark grey, fine grained, dense, massive.			
121 - 132			Serpent	Quartzite. Medium grey. 133 - 142 contains some py., po.			
132 - 155			Serpent	Chloritic quartzite. Light to greenish grey, chlorite to 20%.			
155 - 192			Serpent	Quartzite. Pink to reddish "cherty" quartzite, hard, dense, massive, fine grained. 167 - 177 Contains rhombohed. of iron carbonate.			

**GULF MINERALS COMPANY  
DIAMOND DRILL RECORD**

D.D.H. NO. S-19  
SHEET 1 OF 1

PROPERTY SCADDING TOWNSHIP - SUDBURY PROJECT  
LATITUDE 2+10N  
LONGITUDE 7+37W  
ELEVATION 52'

BEARING - TRUE 180°  
DIP -90°  
FINAL DEPTH 218 ft.  
CORE SIZE AQ

DATE STARTED August 27, 1974  
DATE COMPLETED August 28, 1974  
DRILLED BY Hosking Drilling  
LOGGED BY E. R. Craigie

DATE: July 24, 1975 SIGNED Eric R. Craigie

DEPTH FEET	F'TAGE CORED	F'TAGE REC'D	FORMATION	DESCRIPTION	DEPTH	BED'G & FOLIA	REMARKS SAMPLES ETC.
0 - 6			Overburden				
6 - 161			Serpent	Quartzite. Light grey, medium to fine grained, massive to poorly bedded, hard, dense, brecciated throughout in irregular intervals. Contact with lower limestone unit is a breccia. 21-1/2 - 22, 41 - 42, 45 - 46, 49 - 50 breccia zones, usually with py. 71 - 78 Fractured zone, up to 25% py. in light green chloritic matrix 120 - 172 Fractured zone. Light green chlorite, 10 - 20% py. and po. 148 - 161 Brecciated quartzite and greywacke. 5% py.			
161 - 218			Espanola	Limestone. Light to dark greenish grey. Medium to fine grained, dense, poorly bedded. Calcite varies from 0 - 30%, quartz 40 - 60%, chlorite 5 - 20%. 163 - 184 Rock contains 5 - 30% py. and magnetite in some beds. Interval is dark grey in colour and medium grained. 184 - 196 Light grey to nearly white, up to 40% calcite	190	30°-40°	Bedding angle



GOLD MINERALS COMPANY  
DIAMOND DRILL RECORD

D.D.H. NO. S-20  
SHEET 1 OF 1

PROPERTY SCADDING TOWNSHIP - SUDBURY PROJECT  
LATITUDE 2+97N  
LONGITUDE 8+12W  
ELEVATION 64'

BEARING - TRUE -  
DIP -90°  
FINAL DEPTH 223 ft.  
CORE SIZE AQ

DATE STARTED September 3, 1974  
DATE COMPLETED September 5, 1974  
DRILLED BY Hosking Drilling  
LOGGED BY E.R. Craigie

DATE: July 24, 1975 SIGNED Eric R. Craigie

DEPTH FEET	F'TAGE CORED	F'TAGE REC'D	FORMATION	DESCRIPTION	DEPTH	BED'G & FOLIA	REMARKS SAMPLES ETC.
0 - 4			Casing				
4 - 7			Serpent	Chloritic zone. Dark green, contains over 80% chlorite with 1- 10% arsenopyrite. Unit is sheared with some slickensides.			
7 - 87			Serpent	Quartzite. Light to pink. Hard, dense, blocky. Massive to poorly bedded.			
				4 - 17.5 Pinkish quartzite			
				17.5 - 28 Grey quartzite, blocky with slickensides			
				49 - 53 Pinkish quartzite, brecciated in part			
				66.5 - 76 Pinkish quartzite			
87 - 105-1/2			Serpent	Chloritic zone. Contains up to 75% chlorite in short intervals. Zone consists of chloritized quartzite - both pinkish and light grey units. Sulphides, mainly arsenopyrite, vary from 0 - 5% of rock.			Interval between 95-1/2 - 98-1/2 shows strong foliation at 40° to core axis
				88 - 93 75% chlorite, sulphides rare			
				93 - 96-1/2 25 - 50% chlorite, sulphides rare			
				96-1/2 - 98-1/2 80% chlorite, up to 20% arsenopyrite			
				98-1/2 - 103-1/2 25% chlorite in pink quartzite, rare sulphides.			
103-1/2 - 204-1/2			Serpent	Quartzite. Light to dark grey, medium to fine grained, hard, dense, massive to poorly bedded. Contains minor py. and po.	130	55°	
204-1/2 - 221			Serpent	Greywacke, dark grey, fine grained, massive, hard and dense			
221 - 223			Serpent	Quartzite. Dark grey, dirty.			

DIAMOND DRILL RECORD

D.D.H. NO. S-21

SHEET

1 OF 1

PROPERTY SCADDING TOWNSHIP - SUDBURY PROJECT  
 LATITUDE 2+93N  
 LONGITUDE 9+10W  
 ELEVATION 72'

BEARING - TRUE -  
 DIP -90°  
 FINAL DEPTH 177 ft.  
 CORE SIZE AQ

DATE STARTED September 6, 1974  
 DATE COMPLETED September 7, 1974  
 DRILLED BY Hosking Drilling  
 LOGGED BY E. R. Craigie

DATE: July 24, 1975

SIGNED Eric R. Craigie

DEPTH FEET	F'TAGE CORED	F'TAGE REC'D	FORMATION	DESCRIPTION	DEPTH	BED'G & FOLIA	REMARKS SAMPLES ETC.
0 - 3			Overburden				
3 - 177			Serpent	Quartzite with some greywacke beds. Hard, dense, medium to fine grained, massive to poorly bedded. Light to dark grey. Foliated. Composition varies from a clean quartzite to greywacke.			
				3 - 10-1/2 Light grey, blocky, poorly bedded, medium grained, foliated. 48 - 48-1/2 sheared.			
				51 - 65-1/2 Light pinkish grey, dense, hard, massive, fine grained, brecciated in part			
				65-1/2 - 106 Medium grey quartzite, hard, poorly bedded, medium grained, foliated. Grades into greywacke at base. Blocky throughout, fractures with slickensided surfaces	95	25°	Bedding angle
				106 - 118 Greywacke. Fine grained, dense, poorly bedded, foliated. Dark grey in colour			
				118 - 126 Pinkish to light grey quartzite, hard, dense, massive to fine grained. 122 - 126, brecciated, with some vein quartz			
				126 - 136 Greywacke, dark grey, fine grained.			
				136 - 177 Dirty quartzite, Medium grey, medium grained. Hard. Poorly bedded.			

GULF MINERALS COMPANY  
DIAMOND DRILL RECORD

D.D.H. NO. S-22  
SHEET 1 OF 1

PROPERTY SCADDING TOWNSHIP - SUDBURY PROJECT  
LATITUDE 2+75N  
LONGITUDE 10+08W  
ELEVATION 67'

BEARING - TRUE -  
DIP -90°  
FINAL DEPTH 272 ft.  
CORE SIZE AQ

DATE STARTED September 9, 1974  
DATE COMPLETED September 10, 1974  
DRILLED BY Hosking Drilling  
LOGGED BY E. R. Craigie

DATE: July 24, 1975 SIGNED *Eric R. Craigie*  
Eric R. Craigie

DEPTH FEET	F'TAGE CORED	F'TAGE REC'D	FORMATION	DESCRIPTION	DEPTH	BED'G & FOLIA	REMARKS SAMPLES ETC.
0 - 6			Overburden				
6 - 30			Serpent	Quartzite. Light grey, medium to fine grained, poorly bedded, hard, blocky, foliated. Fractures with slickensides throughout zone.			
30 - 50			Serpent	Quartzite. Light to pinkish grey. Fine grained, massive. Hard, dense. Blocky throughout, especially at 40'			
50 - 106			Serpent	Quartzite. Light grey, medium to fine grained, poorly bedded. Generally as upper unit. 75 - 76, 81 - 83, 85 - 87 Brecciated with slickensides.			
106 - 110			Serpent	Quartzite. Light grey to near white. Dense, massive, fine grained.			
110 - 120			Serpent	Quartzite. Light grey, poorly bedded.			
120 - 131			Serpent	Quartzite. Light pinkish grey to white, massive.			
131 - 135			Serpent	Quartzite. Grey, sheared, blocky. Slickensides on fractures			Minor fault
135 - 212			Serpent	Quartzite. Light to medium grey, poorly bedded to massive. Medium to fine grained, hard, dense, brecciated in part. Becoming dirty towards base. 177 - 179 Greywacke 179 - 180 Blocky with slickensides			Minor fault Minor fault
212 - 272			Serpent	Quartzite and greywacke. Medium to dark grey, foliated. 212 - 219, 222 - 237, 245 - 264 greywacke beds.			
					252	30°	Bedding angle

GULF MINERALS COMPANY  
DIAMOND DRILL RECORD

D.D.H. NO. S - 25  
SHEET 1 OF 1

PROPERTY SCADDING TOWNSHIP - SUDBURY PROJECT  
LATITUDE 2+75N  
LONGITUDE 10+08W  
ELEVATION 67'

BEARING—TRUE 0°  
DIP -45°  
FINAL DEPTH 111 ft.  
CORE SIZE AQ

DATE STARTED September 11, 1974  
DATE COMPLETED September 12, 1974  
DRILLED BY Hosking Drilling  
LOGGED BY E. R. Craigie

DATE: July 24, 1975 SIGNED *Eric R. Craigie*  
Eric R. Craigie

DEPTH FEET	FTAGE CORED	FTAGE REC'D	FORMATION	DESCRIPTION	DEPTH	BED'G & FOLIA	REMARKS SAMPLES ETC.
0 - 6			Overburden				
6 - 111			Serpent	Quartzite. Light pinkish grey to medium grey. Hard dense, poorly bedded to massive, blocky throughout. Foliated. medium to fine grained. Composition varies from clean to dirty quartzite.			
				11 - 12 1/2 Chloritic zone. Breccia of quartzite fragments in chlorite matrix. Chlorite to 30%, py. 5 - 10%, vuggy texture.			
				12 1/2 - 14 sheared, blocky with slickensides.			
				46 1/2 - 48 1/2 Chloritic breccia. 25% chlorite in clean white quartzite. No sulphides			
				60 1/2 - 62 Chloritic Breccia. chlorite to 30%, po. to 10%. some grey vien quartz in light white quartzite.			
				62 - 64 blocky, with slickensides.			
				65 1/2 - 80 Quartzite. Light pinkish to white, massive fine grained.			
				81 - 81 1/2 blocky with slickensides.			
				90 1/2 - 94 blocky with slickensides.			
				108 - 110 Breccia. Grey carbonate and some clay gouge.			Fault zone



**GULF MINERALS COMPANY  
DIAMOND DRILL RECORD**

D.D.H. NO. S - 25  
SHEET 1 OF 1

PROPERTY SCADDING TOWNSHIP - SUDBURY PROJECT  
LATITUDE 2+06N  
LONGITUDE 8+14W  
ELEVATION 68'

BEARING - TRUE 0°  
DIP -60°  
FINAL DEPTH 190 ft.  
CORE SIZE AQ

DATE STARTED September 21, 1974  
DATE COMPLETED September 22, 1974  
DRILLED BY Hosking Drilling  
LOGGED BY E. R. Craigie

DATE: July 24, 1975 SIGNED Eric R. Craigie  
*Eric R. Craigie*

DEPTH FEET	F'TAGE CORED	F'TAGE REC'D	FORMATION	DESCRIPTION	DEPTH	BED'G & FOLIA	REMARKS SAMPLES ETC.
0 - 5			Overburden				
5 - 116			Serpent	Quartzite. Light to medium grey, Medium to fine grained, foliated. Hard, massive to poorly bedded. Blocky throughout.			
				79 - 81 Breccia. 2-10% py.			
				81 - 100 well bedded, calcareous	96	15° - 20°	bedding angle.
				100 - 101 blocky, sheared, slickensides.			
116 - 124			Serpent	Quartzite. Pink to reddish hard, dense, fine grained. Brecciated in part.			
124 - 190			Serpent	Quartzite. Light grey to pinkish grey becoming greenish grey towards base. Medium to fine grained. Hard, dense, poorly bedded to massive. Approaches grey wacke in composition over some short intervals. Brecciated towards base.			
				132 1/2 - 138 1/2 Chloritic zone. Chlorite varies between 0 to 75% of rock. Massive, vuggy py. po. at 135 1/2 feet. The interval consists of chloritized light pink to grey quartzite.			
				139 1/2 - 142 1/2 dark grey, grey wacke. Not chloritic or mineralized with sulphides.			
				144 - 145 1/2 Chloritic breccia. Chlorite comprises about 15% of the rock. Host rock is light grey to pink quartzite. Py. occurs up to 5%.			
				154 - 155 , 164 - 165, 169 - 170, 174 - 177, 181 - 182, 186 - 190, brecciated zones, some with minor po. mineralization.			



GULF MINERALS COMPANY  
DIAMOND DRILL RECORD

D.D.H. NO. S - 27  
SHEET 1 OF 2

PROPERTY SCADDING TOWNSHIP - SUDBURY PROJECT  
LATITUDE 1+32N  
LONGITUDE 6+42W  
ELEVATION 35'

BEARING - TRUE 0°  
DIP -45°  
FINAL DEPTH 201 ft.  
CORE SIZE AQ

DATE STARTED September 25, 1974  
DATE COMPLETED September 25, 1974  
DRILLED BY Hosking Drilling  
LOGGED BY E. R. Craigie

DATE: September 26, 1974 SIGNED *Eric R. Craigie*  
Eric R. Craigie

DEPTH FEET	FTAGE CORED	FTAGE REC'D	FORMATION	DESCRIPTION	DEPTH	BED'G & FOLIA	REMARKS SAMPLES ETC.
0 - 10			Overburden				
10 - 111			Espanola	Limestone: light grey to greenish, generally well bedded and strongly calcareous, dense, medium to coarse grained, foliated. Contact with lower quartzite unit is a breccia - quartzite fragments up to 1" in size in a greenish matrix (possibly a regolith zone).  31 1/2 - 32 1/2 dark green breccia zone, with some quartz and py.  83 - 83 1/2 3" wide band of magnetite with some py., appears conformable to bedding.  91 - 92 Magnetite beds in limestone, conformable to calcareous beds.  93 - 105 Magnetite disseminated and in beds. Heavy beds at 94 - 95, 96- 97, with some pyrite and quartz in a breccia zone at 98 - 100 and 103 - 104.  111 - 112 Breccia, green coloured, angular fragments of grey to brown quartzite in greenish matrix with about 5 - 10% py.	50'	25°-30°	Bedding angle.
111 - 133			Serpent	Quartzite to a grey wacke: dark grey, generally hard, dense, massive; with some blocky and sheared intervals.  121' pyrite filled fracture 1/4" wide.  129-132 very blocky, sheared.			





**GULF MINERALS COMPANY  
DIAMOND DRILL RECORD**

D.D.H. NO. S - 28  
SHEET 1 OF 1

PROPERTY SCADDING TOWNSHIP - SUDBURY PROJECT  
 LATITUDE 2+32N  
 LONGITUDE 7+15W  
 ELEVATION 53'

BEARING—TRUE 270°  
 DIP -30°  
 FINAL DEPTH 208  
 CORE SIZE AQ

DATE STARTED September 26, 1974  
 DATE COMPLETED October 4, 1974  
 DRILLED BY Hosking Diamond Drilling  
 LOGGED BY E. R. Craigie

DATE: October 5, 1974

SIGNED Eric R. Craigie

DEPTH FEET	F'TAGE CORED	F'TAGE REC'D	FORMATION	DESCRIPTION	DEPTH	BED'G & FOLIA	REMARKS SAMPLES ETC.
0 - 12			Overburden				
12-208			Serpent	Quartzite: light to dark grey, medium to coarse grained, foliated, massive to poorly bedded. Generally blocky throughout, unit becomes darker coloured towards base - approaches grey wacke in composition.	106'	40°	Bedding
				Brecciated intervals occur throughout core, breccia usually mineralized with py. and minor chalco., sometimes weakly chloritic.			
				12 - 65 very blocky near-surface zone, some rusty fractures			
				84.5-85.5 Breccia, 5% py.			
				91 - 92 Breccia, 2 - 5% py., po.			
				99 - 102 Breccia, 5% py., po., minor chlorite			
				114.5-116 Breccia, 2% py., po., core angle at 30°			
				125 - 126 Breccia, 2% py. and po.			
				143 - 144 Breccia, minor py., po.			
				164 - 165 Breccia, po., py; minor chlorite, fine grained, fragments to 1/4" in size.			169': one inch wide gouge zone
				172 - 173.5 Breccia, fine grained as above, minor py., po.			
				177 - 180.5 Breccia, py., po. - about 2%, minor chlorite			
				Breccia fragments up to 1/2" but generally smaller (1/8 - 1/4")			



GULF MINERALS COMPANY

DIAMOND DRILL RECORD

D.D.H. NO. S-30  
SHEET 1 OF 2

PROPERTY SCADDING TOWNSHIP - SUDBURY PROJECT  
LATITUDE 2+06N  
LONGITUDE 8+64W  
ELEVATION 63 feet

BEARING—TRUE 0° True  
DIP -60°  
FINAL DEPTH 184 ft.  
CORE SIZE AQ

DATE STARTED October 9, 1974  
DATE COMPLETED October 10, 1974  
DRILLED BY Hosking Drilling  
LOGGED BY E. R. Craigie

DATE: October 10, 1974 SIGNED *Eric R. Craigie*  
Eric R. Craigie

DEPTH FEET	F'TAGE CORED	F'TAGE REC'D	FORMATION	DESCRIPTION	DEPTH	BED'G & FOLIA	REMARKS SAMPLES ETC.
0 - 6			Overburden				
6 - 77			Serpent	Quartzite, light to dark grey, generally massive to poorly bedded; medium to fine grained, foliated. Strongly brecciated in several sections, becomes darker coloured and dirty towards base. Sulphides occur in minor quantities throughout and up to 20% in some breccia zones (mostly py.).			
				6 - 11 Very blocky, rusty fractures - surface weathered zone.			
				13 - 14 Breccia.			
				19 - 30 Breccia, fragments to 1" in size, 5% py.			
				37 - 39 Breccia, 1 - 5% py. and po.			
				65 - 67 Breccia, up to 25% py. and po.			
				72.5 - 73 Breccia, up to 30% py.			
77 - 184			Serpent	"Dirty" quartzite to greywacke; grey to very dark grey.			
				104 - 105 Variably mineralized, with chlorite, py., po., arsenopy in variably amounts; brecciated.			
				129 - 131 Grey quartzite, 5 - 10% chlorite, minor py. and po.			
				131 - 137-1/2 Reddish quartzite; fine grained, brecciated, chlorite forms matrix, minor py. chalco, po.			
				137-1/2 - 139-1/2 Grey quartzite to greywacke.			134.3 - 138.4
				139-1/2 - 142 Breccia, reddish quartzite fragments chlorite in matrix, minor arsenopy, py., po., chalcopy.	140°	45°	Shear angles on breccia fragments.
				152 - 163 Grey quartzite to greywacke.			
				162 - 163 Breccia, minor py.			



GULF MINERALS COMPANY  
DIAMOND DRILL RECORD

D.D.H. NO. S - 31  
SHEET 1 OF 2

PROPERTY SCADDING TOWNSHIP - SUDBURY PROJECT  
LATITUDE 1+75N  
LONGITUDE 9+35W  
ELEVATION 62'

BEARING - TRUE 0°  
DIP -60°  
FINAL DEPTH 205'  
CORE SIZE AQ

DATE STARTED October 16, 1974  
DATE COMPLETED October 17, 1974  
DRILLED BY Hosking Diamond Drilling  
LOGGED BY E. R. Craigie

DATE: October 17, 1974

SIGNED *Eric R. Craigie*  
Eric R. Craigie

DEPTH FEET	F'TAGE CORED	F'TAGE REC'D	FORMATION	DESCRIPTION	DEPTH	BED'G & FOLIA	REMARKS SAMPLES ETC.
0 - 7			Overburden				
7 - 43			Serpent	Quartzite: light to medium grey, hard, massive, blocky; coarse to medium grained, foliated; with some breccia zones. 7 - 29 very blocky, near surface zone 32 - 34 Breccia, 5% pyrite in quartz and feldspar fragments. 38.5 - 40 Breccia, reddish quartzite fragments in light green, fine grained matrix. 41 - 42 very fine grained, mylonitic			
43 - 77.5			Serpent	Grey wacke to argillite; dark grey to nearly black; fine grained, dense, massive; foliated. 47 - 49 very blocky, sheared, some grey quartz. 52 - 62 unit has 1 - 5% disseminated py.	60'	10°	bedding angle.
77.5 - 92			Serpent	Grey wacke (?): medium greenish grey rock, fine grained; sheared, brecciated and mylonitic; minor py. throughout 77.5 - 78 Breccia 87 - 92 Breccia, up to 5% py.			
92 - 145			Serpent	Quartzite: light to medium grey; poorly bedded to massive 132 - 133 Breccia 135' 2" wide breccia zone 136 - 137.5 Breccia 139 2" wide breccia zone			



DIAMOND DRILL RECORD

D.D.H. NO. S - 32  
SHEET 1 OF 1

PROPERTY SCADDING TOWNSHIP - SUDBURY PROJECT  
LATITUDE 2+06N  
LONGITUDE 6+90W  
ELEVATION 45'

BEARING—TRUE 0°  
DIP -45°  
FINAL DEPTH 106 ft.  
CORE SIZE AQ

DATE STARTED October 18, 1974  
DATE COMPLETED October 18, 1974  
DRILLED BY Hosking Drilling  
LOGGED BY E. R. Craigie

DATE: October 19, 1974 SIGNED *Eric R. Craigie*  
Eric R. Craigie

DEPTH FEET	F'TAGE CORED	F'TAGE REC'D	FORMATION	DESCRIPTION	DEPTH	BED'G & FOLIA	REMARKS SAMPLES ETC.
0 - 12			Casing				
12 - 106			Serpent	Quartzite: Light reddish pink to dark grey, massive to poorly bedded medium to fine grained, foliated. 12' - 18' grey quartzite, brecciated throughout, up to 25% py. and some grey quartz injections in Breccia matrix. 18' - 30' grey quartzite, coarse grained, hard, dense, massive to poorly bedded, weakly foliated. 30' - 34.5' reddish quartzite, hard, dense, strongly to weakly chloritic 30 - 31 chloritic breccia, py. to 5% 34.5 - 37.5' reddish quartzite breccia, strongly chloritic at 35' - 36' with up to 10% py. 37.5 - 45.0' reddish quartzite breccia, strongly chloritic up to 50% py. 45' - 50' grey and red quartzite breccia, weakly chloritic py. to 5% 50' - 106' light to dark grey quartzite, variably brecciated. 52 - 53' chloritic breccia, 25% py. 57.5 - 58.5' breccia, weakly chloritic, 15% py. 62 - 63' breccia, minor py. 69.5 - 72' breccia, 15% py., minor chlorite. 72 - 75' Bx., grey quartz, 10% py, minor chlorite 79 - 80' Breccia, 5% py. and po. 82 - 90' Breccia, py. to 50% at 83', minor chlorite 97 - 106' variably brecciated.			





Gulf Minerals Canada Limited

DRILL HOLE INFORMATION

HOLE NO.	LOCATION	BEARING/DIP	TOTAL DEPTH	DATE STARTED	DATE COMPLETED
S-45	17+00W 3+25N	180°/-45°	307 Feet	Sept. 27/75	Oct. 1/75
S-46	18+00W 4+00N	180°/-45°	317 Feet	Oct. 1/75	Oct. 2/75
S-47	19+00W 5+50N	180°/-45°	348 Feet	Oct. 3/75	Oct. 6/75
S-48	16+00W 2+50N	180°/-45°	310 Feet	Oct. 7/75	Oct. 9/75
S-49	17+00W 3+50N	230°/-45°	298 Feet	Oct. 14/75	Oct. 17/75
TOTAL FOOTAGE			1,580 Feet		

Diameter of core: AQ - 1 1/16 inches

owner/operator of drill: Continental Diamond Drilling Co. Ltd.,  
1156 Lariviere Street,  
P. O. Box 250,  
Rouyn, P. Q.,  
J9X 5C3.

Work assignment, claim S.373196 - 1,541 days.





Gulf Minerals Canada Limited  
DIAMOND DRILL RECORD

D.D.H. NO. S - 45  
SHEET 1 OF 2

PROPERTY SUDBURY PROJECT-SCADDING TWP.  
LATITUDE 3+25N  
LONGITUDE T7+00W  
ELEVATION Datum

BEARING—TRUE 180° True  
DIP -45°  
FINAL DEPTH 307 feet  
CORE SIZE A.Q.

DATE STARTED September 27, 1975  
DATE COMPLETED October 1, 1975  
DRILLED BY Continental  
LOGGED BY E. R. Craigie

DATE: October 1, 1975 SIGNED *E. R. Craigie*

DEPTH FEET	F'TAGE CORED	F'TAGE REC'D	FORMATION	DESCRIPTION	DEPTH	BED'G & FOLIA	REMARKS SAMPLES ETC.
0-10			Overburden				
10-290			Serpent	Quartzite: pink to grey coloured, medium to fine grained. Composition varies from clean quartzite to grey wacke.			
				10-196 pink quartzite. Hard, dense, fine grained, massive, variably brecciated, relatively clean quartzite. Contains zones with minor py. and some chlorite alteration. Greyish zones show poorly developed bedding planes.			
				17 1/2-19 1-5% chlorite in fractured quartzite			
				43-46 10-50% chlorite, 20% py.			
				63-66, 78 1/2-80 very blocky, fractures with slickensides			
				80 1/2-86 1/2, 104-134 1/2 breccia, variably chloritic, minor to 5% pyrite.			
				163-166, 173-175 very blocky fractures with slickensides			
				196-246 light to dark grey quartzite. Hard, dense, massive to poorly bedded. Composition varies from light grey, clean quartzite to argillaceous quartzite and grey wacke.			
				213-215, 217-221 very blocky, slickensides on fractures			
				227 1/2-228, 235-236 brecciated quartzite, 5-20% py. with some dark grey chloritic material.			
				246-276 very dirty quartzite to grey wacke, poorly bedded, medium to fine grained.			
				251-252 1/2 leached, quartzite breccia			
				261-264 chloritic grey wacke, 5-10% py and po., 10-15% chlorite.			





Gulf Minerals Canada Limited  
DIAMOND DRILL RECORD

D.D.H. NO. S - 46

SHEET 1

OF 2

PROPERTY SUDBURY PROJECT - SCADDING TIP.  
 LATITUDE 4+00N  
 LONGITUDE 18+00W  
 ELEVATION 2 feet above S-45

BEARING—TRUE 180° True  
 DIP - 45°  
 FINAL DEPTH 317 feet  
 CORE SIZE A.Q.

DATE STARTED October 1, 1975  
 DATE COMPLETED October 2, 1975  
 DRILLED BY Continental  
 LOGGED BY E. R. Craigie

DATE: October 3, 1975

SIGNED E. R. Craigie

DEPTH FEET	F'TAGE CORED	F'TAGE REC'D	FORMATION	DESCRIPTION	DEPTH	BED'G & FOLIA	REMARKS SAMPLES ETC.
0-10			Overburden				
10-295			Serpent	Quartzite: pink to grey coloured, hard, dense, massive, medium to fine grained. Composition varies from an usually clean to somewhat dirty quartzite. Some zones show chloritic alteration which is often intense - up to 80% chlorite. Chloritic zones contain up to 50% sulphides (pyrite and pyrrhotite). Siderite is abundant in some intervals as coarse (1/4 - 1/2") crystals.			
				12-14 blocky, rusty, near surface weathered zone.			
				30-34 weakly chloritic (1-5% chlorite), brecciated, pink quartzite			
				34-50 strongly chloritic zone, dark green with some white quartz in pink quartzite. From 37-44 the zone contains about 80% chlorite, sulphides vary from rare to 5% of the core.			
				54-57 minor chloritic in pink quartzite.			
				59 1/2 - 63 chloritic pink quartzite brecciat, up to 30% chlorite between 60 and 62 feet, minor pyrite.			
				68-70 brecciated pink quartzite, 20% siderite, 10% pyrite.			
				72-74 chloritic pink quartzite, up to 60% chlorite, 5% pyrite and 20% white quartz.			
				86 1/2-88 10% siderite in pink quartzite.			
				96-97 blocky, fractures with slickensides.			

DIAMOND DRILL RECORD—CONTINUATION SHEET

D.D.H. NO. S -46

SHEET 2 OF 2

DEPTH FEET	F'TAGE CORED	F'TAGE REC'D	FORMATION	DESCRIPTION	DEPTH	BED'G & FOLIA	REMARKS SAMPLES ETC.
cont'd 10-295				101-104, 110-112 1/2, 122-124, 127-129 blocky, fractures with slickensides			
				130-147 1/2 pink quartzite breccia, some siderite crystals, 1-5% pyrite, minor hematite staining.			
				151-156 blocky, light pink to grey quartzite			
				156-156 1/2, 157 1/2-158, 160-165, 172-172 1/2 pink quartzite breccia, some siderite crystals, 1-5% pyrite			
				178-179 bedded, up to 10% pyrite in light pinkish quartzite		30°	bedding angle
				187-189, 202-205, 219-227 blocky, grey quartzite			
				231-233 dark grey quartzite, up to 10% pyrite			
				235-238 blocky, grey quartzite			
				238-239 chlorite on fracture surfaces			
				249-252, 253-254, 258-266 blocky and fractured quartzite			
				266-271, 274-277, 282-283, 289-295 blocky light grey to pink quartzite, brecciated, 1-40% dark grey chlorite, 2-10% pyrite.			
295-317			Keweenawan	Diabase: dark grey to black, very fine grained near contact increasing to coarse grained at 317 feet. Interval is blocky. The rock is composed of 40-60% pyroxene, 20-40% plagioclase, minor quartz and chlorite and illustrates the typical diabase texture.			



**Gulf Minerals Canada Limited**  
**DIAMOND DRILL RECORD**

D.D.H. NO. S - 47  
SHEET 1 OF 2

PROPERTY SUDBURY PROJECT-SCADDING TWP.  
LATITUDE 57°50N  
LONGITUDE 19°00W  
ELEVATION 7 feet below S-45

BEARING - TRUE 180° True  
DIP -45°  
FINAL DEPTH 348 feet  
CORE SIZE A.Q.

DATE STARTED October 3, 1975  
DATE COMPLETED October 6, 1975  
DRILLED BY Continental  
LOGGED BY T. D. McDonald

DATE: October 7, 1975 SIGNED *J. D. McDonald*

DEPTH FEET	F'TAGE CORED	F'TAGE REC'D	FORMATION	DESCRIPTION	DEPTH	BED'G & FOLIA	REMARKS SAMPLES ETC.
0-16			Overburden				
16-348			Serpent	Quartzite: pink to grey coloured, fine to medium grained, massive to poorly bedded. Strongly brecciated in some zones with crystals of siderite in breccia. Pyrite commonly occurs in the brecciated intervals.			
				16-16 1/2 blocky, pink quartzite			
				23-26 1/2 pink quartzite breccia, 5-40% siderite, 1-25% pyrite and pyrrhotite			
				26 1/2-27, 37 1/2-66 brecciated, unit is composed of more than 60% siderite. The carbonate is light grey in colour with crystals up to 1/2 inch across.			
				43-43 1/2, 47-49, 57 1/2-58 rusty weathered zones.			
				68-74 pink quartzite breccia			
				76-211 quartzite breccia, 5-40% siderite. Intervals at 85-86 and 88-88 1/2 feet contain 20-60% py. and po. At 111 1/2 feet a 6 inch section contains 50% py.			
				154-154 1/2 contains 40-60% pyrite			
				173 1/2-175 1/2, 184-187, 188 1/2-193, 193 1/2-194, 194-200 1/2, 202 1/2-206, 208-210 1/2 intervals are composed of dark grey, poorly bedded quartzite with 1-10% pyrite.			
				211-253 light to dark grey quartzite, fine to medium grained, hard dense, poorly bedded, contains 1-10% py.			







**Gulf Minerals Canada Limited**  
**DIAMOND DRILL RECORD**

D.D.H. NO. S - 48  
SHEET 1 OF 1

PROPERTY SUDBURY PROJECT - SCADDING TWP.  
LATITUDE 2+50N  
LONGITUDE 16+00W  
ELEVATION 22 feet below S-45

BEARING—TRUE 180° True  
DIP - 45°  
FINAL DEPTH 310 feet  
CORE SIZE A.Q.

DATE STARTED October 7, 1975  
DATE COMPLETED October 9, 1975  
DRILLED BY Continental  
LOGGED BY E. R. Craigie

DATE: October 9, 1975 SIGNED E. R. Craigie

DEPTH FEET	F'TAGE CORED	F'TAGE REC'D	FORMATION	DESCRIPTION	DEPTH	BED'G & FOLIA	REMARKS SAMPLES ETC.
0-11			Overburden				
11-299			Serpent	Quartzite: pinkish coloured near top grading to a medium grey colour lower in the section. Hard, dense, massive to poorly bedded, fine to coarse grained (pink coloured quartzite is usually fine grained, grey coloured unit is coarser). The rock is blocky throughout with some zones of brecciation. Fractures commonly have slickensides.			
				11-43 pinkish quartzite: brecciated, massive, contains some dark grey chlorite material. Interval from 11 to 16 feet is a very blocky surface weathered zone.			
				43-91 medium grey quartzite: poorly bedded with beds at 65-80° to the core axis	62	70°	bedding angle
				91-100 pinkish quartzite: massive, dense, fine grained, hard and blocky. The interval between 95 and 97 feet consists of blocky rubble.			
				100-289 medium grey quartzite: medium to coarse grained, poorly bedded, blocky. 110-112, 115-117, 134-137, 162-163 1/2, 204-208, 210-213, 215-217, 221-223, are very blocky intervals.			
				289-299 pinkish quartzite, as for 11-43, blocky.			
299-310			Keweenawan	Diabase: dark grey to black rock. Fine grained near the contact grading to coarse grained at 310 feet. Shows typical diabase texture. Unit is composed of about 60% pyroxene and 40% plagioclase.			



**Gulf Minerals Canada Limited**  
**DIAMOND DRILL RECORD**

D.D.H. NO. S - 49  
SHEET 1 OF 2

PROPERTY SUDBURY PROJECT - SCADDING TWP.  
LATITUDE 3+50N  
LONGITUDE 17+00W  
ELEVATION same level as S-45

BEARING -- TRUE 230° True  
DIP -45°  
FINAL DEPTH 298 Feet  
CORE SIZE A.Q. =

DATE STARTED October 14, 1975  
DATE COMPLETED October 17, 1975  
DRILLED BY Continental  
LOGGED BY E. R. Craigie

DATE: October 17, 1975

SIGNED E. R. Craigie

DEPTH FEET	F'TAGE CORED	F'TAGE REC'D	FORMATION	DESCRIPTION	DEPTH	BED'G & FOLIA	REMARKS SAMPLES ETC.
0-7			Overburden				
7-292 1/2			Serpent	Quartzite: pink to orange-brown and grey. Hard, dense to blocky, massive to poorly bedded, fine to coarse grained. Composition varies from clean to dirty quartzite. Chloritic in part - especially in some brecciated zones with pyrite. Pink or orange quartzite is usually massive, fine grained and contains some siderite; grey quartzite is coarser grained and poorly bedded.			
				7-13 pink quartzite			
				13-31 pink quartzite breccia, variably chloritic with up to 5% py. 50% chlorite at 13-15; 16-22 1/2, 27-28 1/2, 30-31.			
				57-58 1/2 pink quartzite breccia, 25% chlorite			
				75-78 pink quartzite, brecciated with 1-5% py.			
				80-84 pinkish quartzite, 10% siderite			
				89-91 brecciated quartzite, 1-5% ch. and py.			
				100-101 quartzite with 5% siderite, weakly brecciated			
				109-112 1/2 pinkish quartzite breccia, 1-5% chlorite, 25% siderite			
				117-121, 122-126 very blocky, rubble			
				134-136 blocky, brecciated quartzite			
				143-172 1/2 pink brecciated quartzite with 25-40% siderite			
				172 1/2-262 grey quartzite, beds poorly developed at about 60° to core axis. Generally dark grey but with light grey brecciated zones containing siderite at 228-233, 241-244	196	60°	
				262-292 1/2 brecciated light grey and pink quartzite with 20-25% siderite, minor pyrite. The pinkish coloured interval extends from 286-292 feet.			
292 1/2 -295 3/4			Keweenaw	Diabase: dark grey, fine grained. Contact angle appears to be 60-75° but is somewhat obscure.			





**Gulf Minerals Canada Limited**  
**DIAMOND DRILL RECORD**

D.D.H. NO. S-50  
SHEET 1 OF 2

PROPERTY SUDBURY PROJECT - SCADDING TOWNSHIP  
LATITUDE 0+00N  
LONGITUDE 20+60W  
ELEVATION \_\_\_\_\_

BEARING -- TRUE 315°  
DIP -45°  
FINAL DEPTH 358 Feet  
CORE SIZE AQ

DATE STARTED October 17, 1975  
DATE COMPLETED October 19, 1975  
DRILLED BY Continental  
LOGGED BY E. R. Craigie

DATE: October 19, 1975 SIGNED E. R. Craigie

DEPTH FEET	F'TAGE CORED	F'TAGE REC'D	FORMATION	DESCRIPTION	DEPTH	BED'G & FOLIA	REMARKS SAMPLES ETC.
0 - 8			Overburden				
8 - 358			Serpent	Quartzite: Generally brownish orange, very hard, dense, massive, medium to fine grained; brecciated, contains 10 - 50% light grey siderite in rhombohedral crystals up to 1/2 inch across. Pyrite and hematite occur in minor amounts. Some grey quartzite sections occur within the brown quartzite. These are usually medium to coarse grained, massive to poorly bedded and have a composition of dirty quartzite to near greywacke. These grey quartzite zones are also brecciated. Intervals of the grey quartzite occur at 23 - 35; 82 - 90; 100 - 110; 157-3/4 - 159'.			
				8 - 32 Blocky, some rusty zones caused by weathering of siderite and/or pyrite.			
				82 - 89 Grey quartzite, intensely brecciated.			
				160 - 164 Very blocky, largest piece of core about 2 inches.			
				189.9 - 191.6 5% disseminated Py. in crystal form, about 1/16" - 1/32" in size.			
				204 - 205-1/2 1% to 5% disseminated Py. brecciated, 10 - 40% siderite.			
				213 - 214-1/2 Blocky.			
				223-1/2 - 224 Blocky.			

DRILL HOLE INFORMATION

HOLE NO	LOCATION	BEARING/ DIP	TOTAL DEPTH	DATE STARTED	DATE COMPLETED
S-50	0+00N 20+60W	315°/-45°	358'	Oct.17/75	Oct.19/75
S-51	2+27S 14+75W	180°/-45°	268'	Oct.22/75	Oct.23/75
S-52	2+25S 13+75W	180°/-45°	258'	Oct.23/75	Oct.24/75

---

Total Footage - 884'

---

Diameter of Core: AQ - 1-1/16 inches  
Owner/Operator of Drill: Continental Diamond Drilling Co.  
1156 Lariviere Street  
P. O. Box 250  
Rouyn, P. Q.  
J9X 5C3

Work Assignment: Claim S-359344 - 128 days  
Claim S-359360 - 118 days  
Claim S-373196 - 234 days





# Gulf Minerals Canada Limited

## DIAMOND DRILL RECORD

D.D.H. NO.	S-51
SHEET	1 OF 2

PROPERTY SUDBURY PROJECT - SCADDING TOWNSHIP  
 LATITUDE 2+27S  
 LONGITUDE 14+75W  
 ELEVATION \_\_\_\_\_

BEARING—TRUE 180°  
 DIP -45°  
 FINAL DEPTH 268 Feet  
 CORE SIZE AQ

DATE STARTED October 22, 1975  
 DATE COMPLETED October 23, 1975  
 DRILLED BY Continental  
 LOGGED BY E. R. Craigie

DATE: October 23, 1975 SIGNED E. R. Craigie

DEPTH FEET	F'TAGE CORED	F'TAGE REC'D	FORMATION	DESCRIPTION	DEPTH	BED'G & FOLIA	REMARKS SAMPLES ETC.
0 - 17			Overburden				
17 - 61			Espanola	Limestone: Dark grey to greenish grey to reddish grey; moderately hard, fine to medium grained, poorly to well bedded; foliated, brecciated in some intervals. Numerous quartzitic to greywacke and argillitic phases present. Minor sulphides (Py. Po). Composition: 5 - 15% carbonate (siderite), 15 - 25% biotite and/or chlorite, 40 - 70% quartz, 5 - 15% feldspar, up to 10% hematite. 17 - 19-1/2 Blocky, weathered zone.			
61 - 64-1/2			Keweenaw	Diabase: Black, fine grained, weakly foliated, soft; no sulphides, slightly chloritized. Typical diabase texture and composition.	56	45°	Bedding
64-1/4 - 203			Espanola	Limestone: as above unit. 92 - 96 Chlorite along fracture surfaces; 1 - 5% Py. narrow diabase dike at 92 - 92-1/2. Unit is strongly sheared and blocky. 99-1/2 - 100 Blocky. 102 - 107 As for 92 - 96' heavily chloritized, fractured. 1 - 2% Py. 102-1/2 - 103-1/2 Blocky. 131-1/2 - 133 Blocky. 152-1/2 - 158-1/2 Blocky, 1 - 5% Po. and Py. Weakly foliated, Light to dark grey. 186 - 203 Intensely sheared "mylonite", strongly foliated; shear angle at 70 - 80° to core axis			
					137	80°	Bedding
					187	45°	Bedding







**Gulf Minerals Canada Limited**  
**DIAMOND DRILL RECORD**

D.D.H. NO. S-52  
SHEET 1 OF 1

PROPERTY SUDBURY PROJECT - SCADDING TOWNSHIP  
LATITUDE 2+25S  
LONGITUDE 13+75W  
ELEVATION \_\_\_\_\_

BEARING—TRUE 180°  
DIP -45°  
FINAL DEPTH 258 Feet  
CORE SIZE AQ

DATE STARTED October 23, 1975  
DATE COMPLETED October 24, 1975  
DRILLED BY Continental  
LOGGED BY E. R. Craigie

DATE: October 25, 1975 SIGNED E. R. Craigie

DEPTH FEET	F'TAGE CORED	F'TAGE REC'D	FORMATION	DESCRIPTION	DEPTH	BED'G & FOLIA	REMARKS SAMPLES ETC.
0 - 15			Overburden				
15 - 39-1/4			Keweenaw	Diabase: Black, coarse grained at top grading to fine grained at contact with underlying limestone unit. Blocky, ophitic texture. Composition: 40% plagioclase, 60% pyroxene. 28 - 32 Some altered espanola fragments present.			
39-1/4 - 258			Espanola	Limestone: Greenish grey in upper interval to reddish in central zone to light grey in lower section. Upper and central zones are strongly brecciated and show considerable shearing and brecciation, especially near contact with diabase, beds are disrupted and sometimes completely destroyed.			
				39-1/4 - 94 Greenish grey limestone, brecciated, soft, altered. Bedding is irregular or destroyed. Strongly sheared, medium grained.	55	60°	
				94 - 172 Reddish limestone, soft, altered and hematitic. Blocky, sheared; beds at about 60° to core axis. Interval is gradational into light grey, unaltered, well bedded, espanola limestone.			
				172 - 258 Light grey, well bedded, coarse grained, some blocky sections near top; grading to dense rock at lower 30 feet.			

CLAIM LIST

<u>CLAIM NO.</u>	<u>DAYS</u>	<u>CLAIM NO.</u>	<u>DAYS</u>	<u>CLAIM NO.</u>	<u>DAYS</u>
S 323731	1	S 323807	40	S 357989	1
S 323732	1	S 323808	40	S 357990	1
S 323733	30	S 323809	40	S 357991	1
S 323734	30	S 323810	40	S 357992	1
S 323735	30	S 323811	40	S 357993	1
S 323736	30	S 323812	40	S 357994	1
S 323737	30	S 323813	40	S 357995	1
S 323738	1	S 323814	40	S 357996	1
S 323739	1	S 323815	40	S 357997	1
S 323740	1	S 323816	40	S 357998	1
S 323741	1			S 357999	1
S 323742	1				
S 323743	1	S 346887	1		
S 323744	1	S 346888	1	S 359359	1
S 323745	30	S 346889	40	S 359360	1
S 323746	30	S 346890	40		
S 323747	30	S 346891	40		
S 323748	30	S 346892	40	S 373196	39
S 323749	30	S 346893	1		
S 323750	30	S 346894	1		
		S 346895	1	S 359343	1
		S 346896	1	S 359344	1
S 323667	40	S 346897	1	S 359345	1
S 323668	40	S 346898	1	S 359346	1
S 323669	40	S 346899	1	S 359347	1
S 323670	40	S 346900	1		
S 323671	40	S 346901	1		
S 323672	40	S 346902	1	S 359634	1
S 323673	40	S 346903	1	S 359635	1
S 323674	40			S 359636	1
S 323675	40			S 359637	1
S 323676	40	S 346914	1	S 359638	1
S 323677	40	S 346915	1		
S 323678	40	S 346916	1		
S 323679	40				
S 323680	40				
S 323681	40	S 357986	1		
		S 357987	1		
		S 357988	1		

1 Claim at 39 days	-	39
11 Claims at 30 days	-	330
29 Claims at 40 days	-	1,160
51 Claims at 1 day	-	51
<b>Total days</b>	<b>=</b>	<b>1,580 days</b>

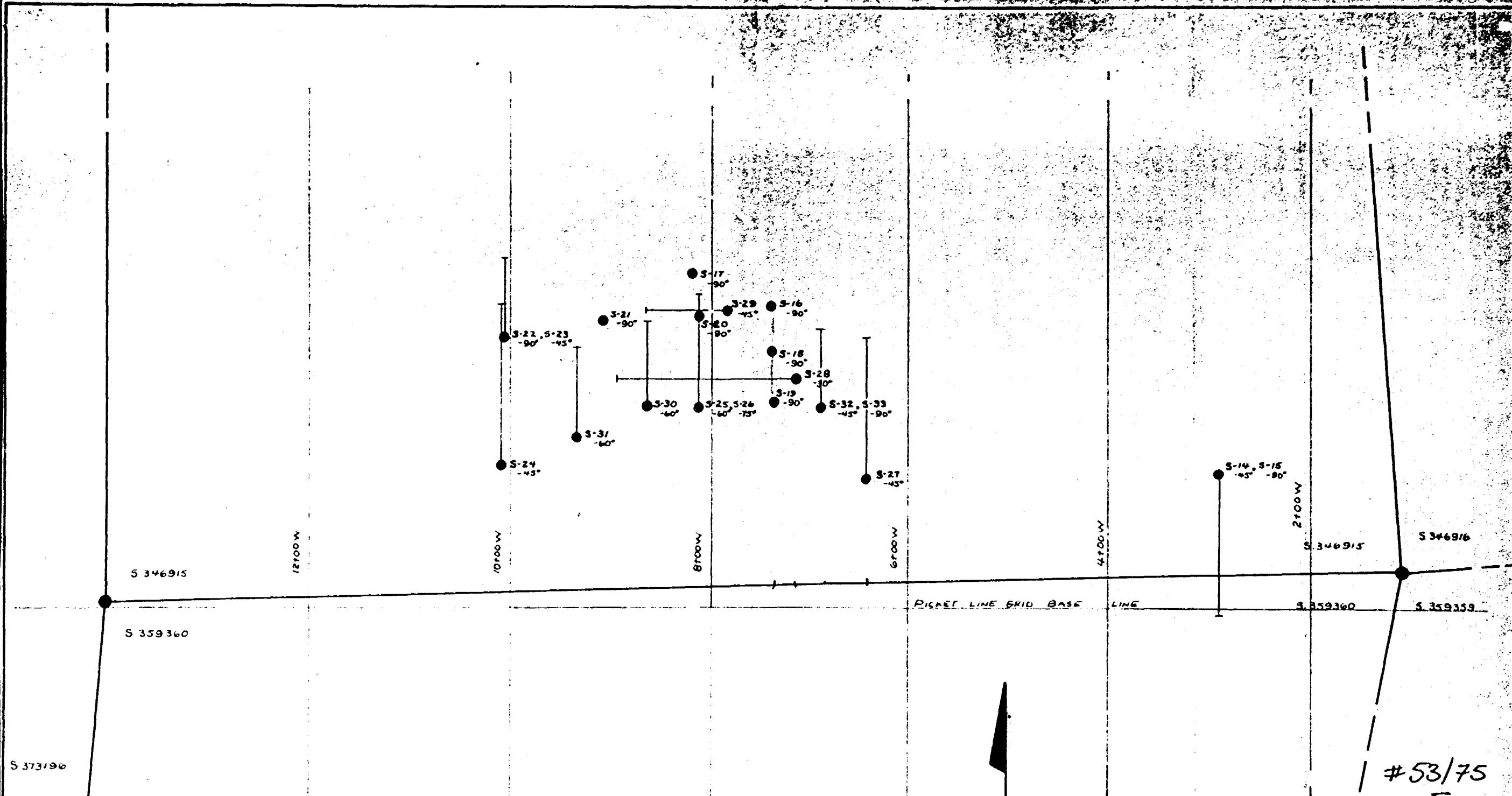
Claims Recorded in Sudbury but Reports of Work and Reports go to  
Larder Lake - (Kirkland Lake)

Coleman	M. 454
Harris	M. 493
Bucke	M. 432
Firstbrook	M. 475
Lorrain	M. 536
South Lorrain	M. 591
Gillies Limit (South Part)	M. 484
Gillies Limit (North Part)	M. 483
Hudson	M. 508

CONTROL PLANS  
PLOTTED

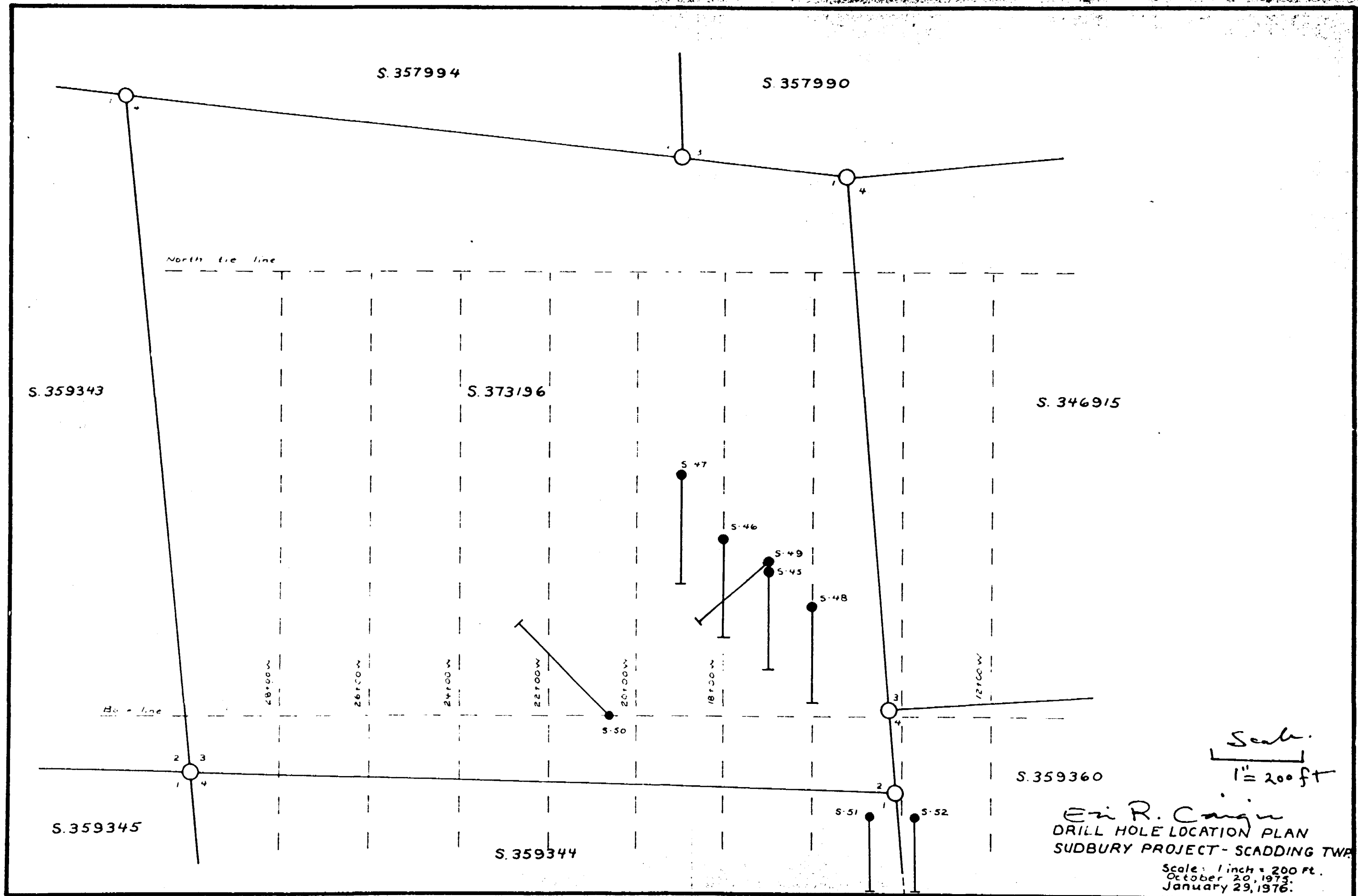
Lundy	M. 538
Barr	M. 411
Kittson	M. 524
Dymond	M. 468

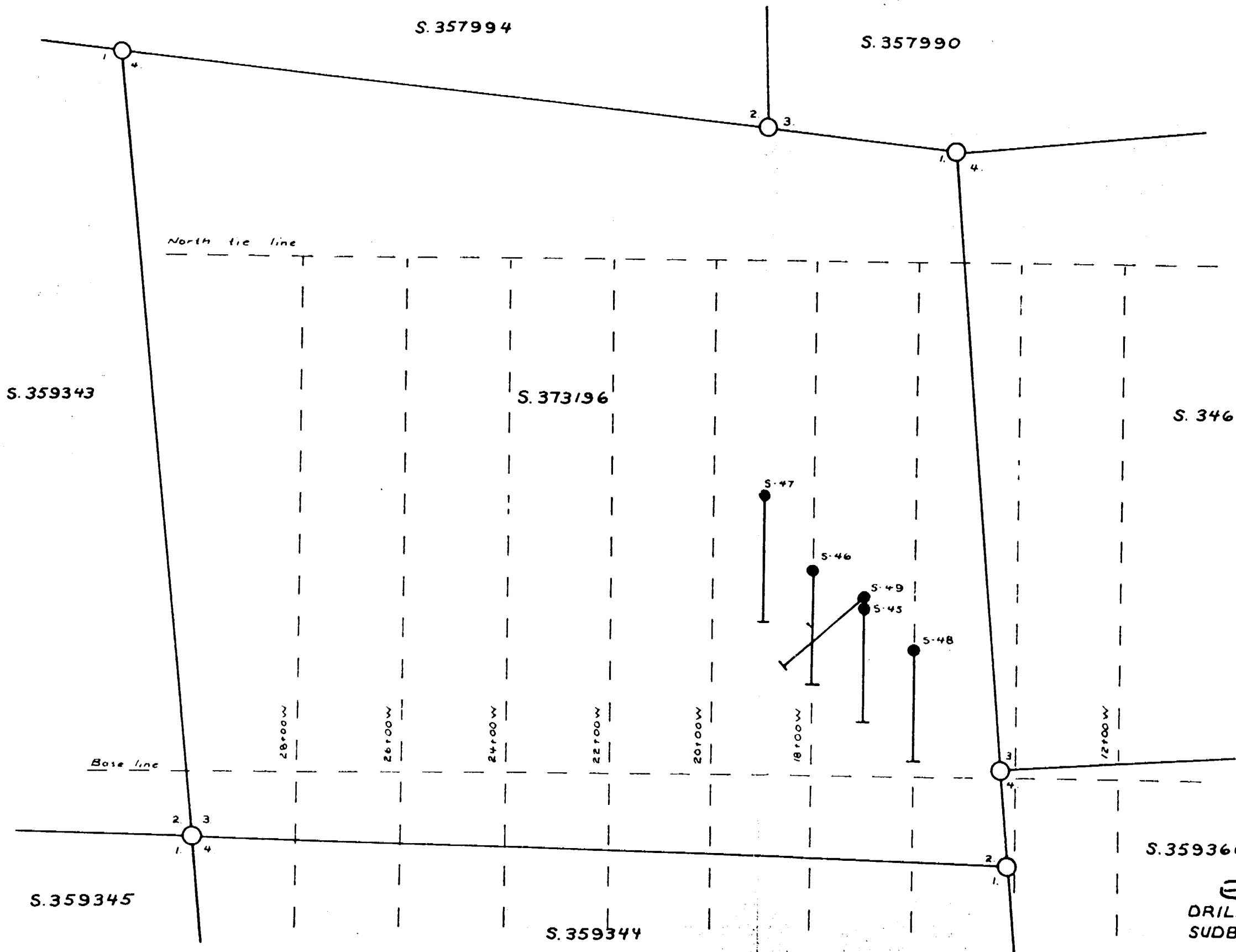
NO CONTROL PLANS



#53/75  
S.

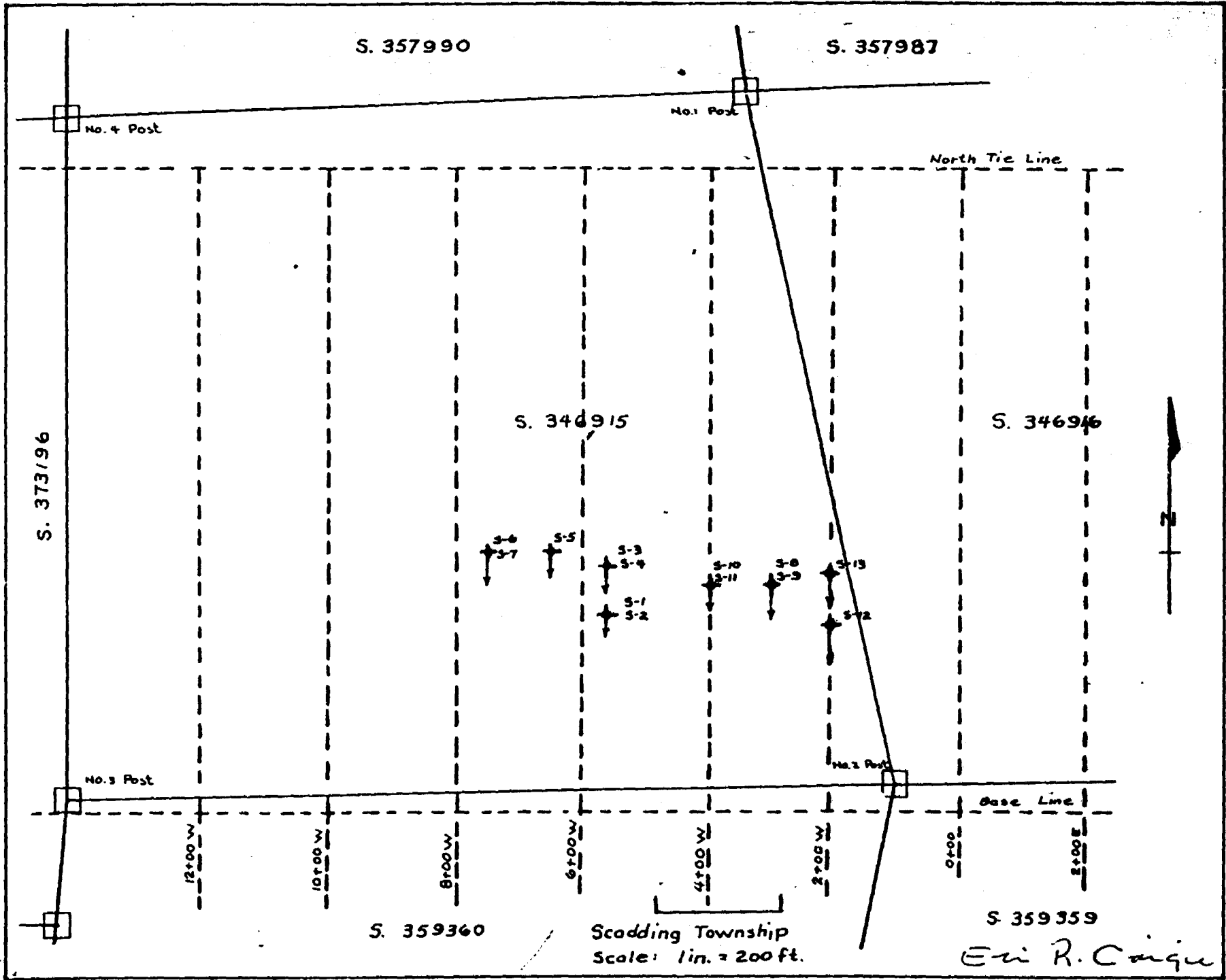
GULF MINERALS CANADA LIMITED			
SUDBURY PROJECT - DRILL HOLE LOCATION			
Scale 1" = 100'			
PLAN E. R. Cairn			
Date July 24, 1975	Scale 1 inch = 100 feet	Drawn By E.R.	Note No.

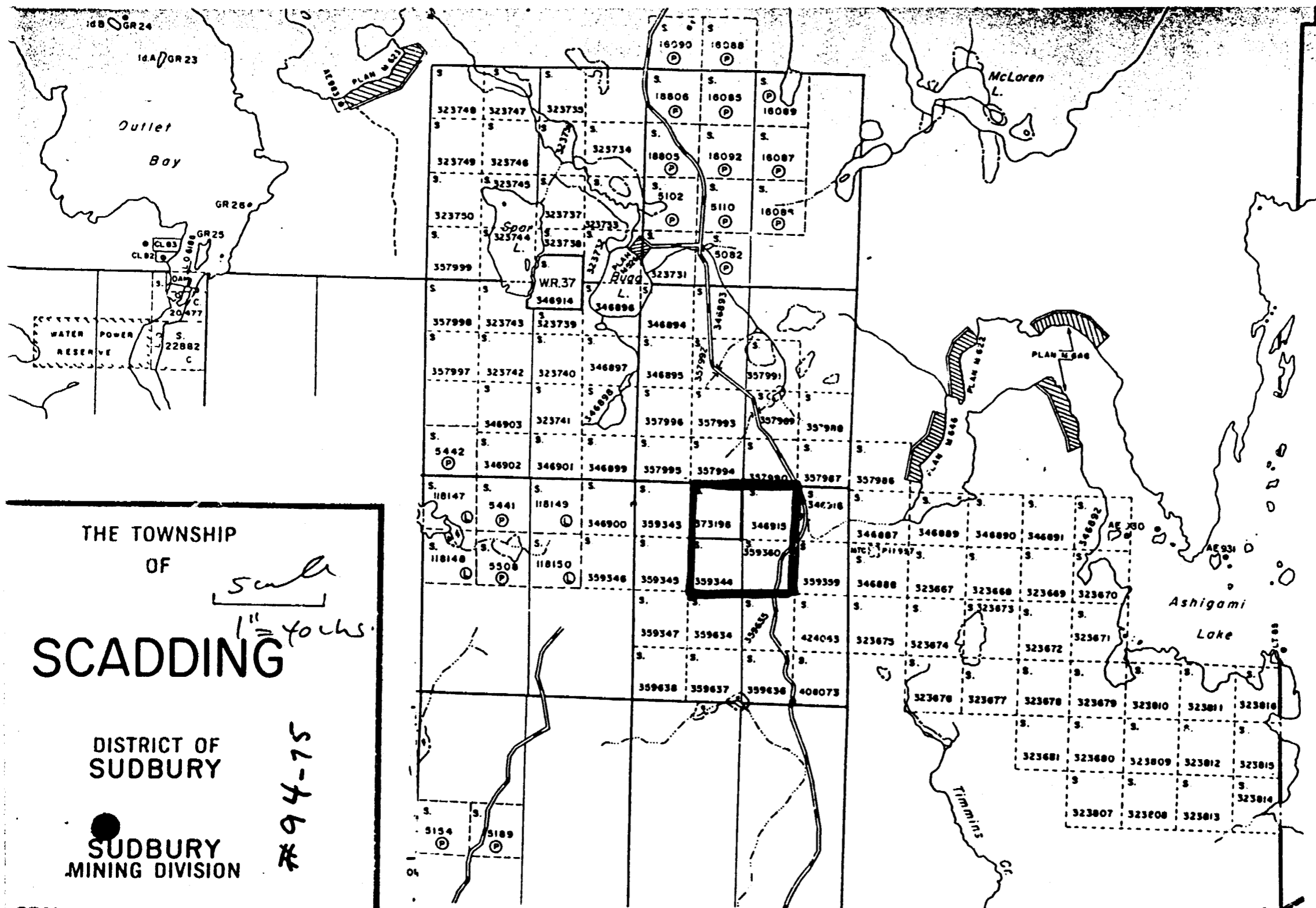




Scale  
 1" = 200 ft.

*Eric R. Conijn*  
 DRILL HOLE LOCATION PLAN  
 SUDBURY PROJECT - SCADDING TWP.  
 Scale: 1 inch = 200 ft.  
 October 20, 1975.





Davis Twp. - M.748

THE TOWNSHIP  
OF *Scadding*  
*1" = 40 chs.*  
**SCADDING**  
DISTRICT OF  
SUDBURY  
SUDBURY  
MINING DIVISION  
*#94-75*

400  
the  
Floor  
Lake  
resei  
Islan  
staki