

LEGEND

- GRENVILLE**
- A Chlorite Gneiss
 - B Quartz Carbonate Sericite Schist
 - C Pegmatite
 - D Garnet Gneiss
 - E Quartz Biotite Gneiss
 - F Meta-arkose, Meta-quartzite Gneisses
- HURONIAN**
- G Nipissing Diabase, Gabbro
 - H Upper Missisquoi Quartzite
 - I Middle Missisquoi Conglomerate (Ramsey Lake)
 - J Middle Missisquoi Argillite
 - K Quartz Vein

- Swamp
- Creek
- Bush Road
- Strike
- Strike and dip
- Strike and vertical dip
- Strike of shearing
- Strike and dip of shearing
- Strike and vertical dip of shearing
- Cliff or steep hill
- Drill hole collar location

WATT - McLEAN PROPERTY

STREET TOWNSHIP
WEST SHEET

SCALE 1 inch = 100 feet



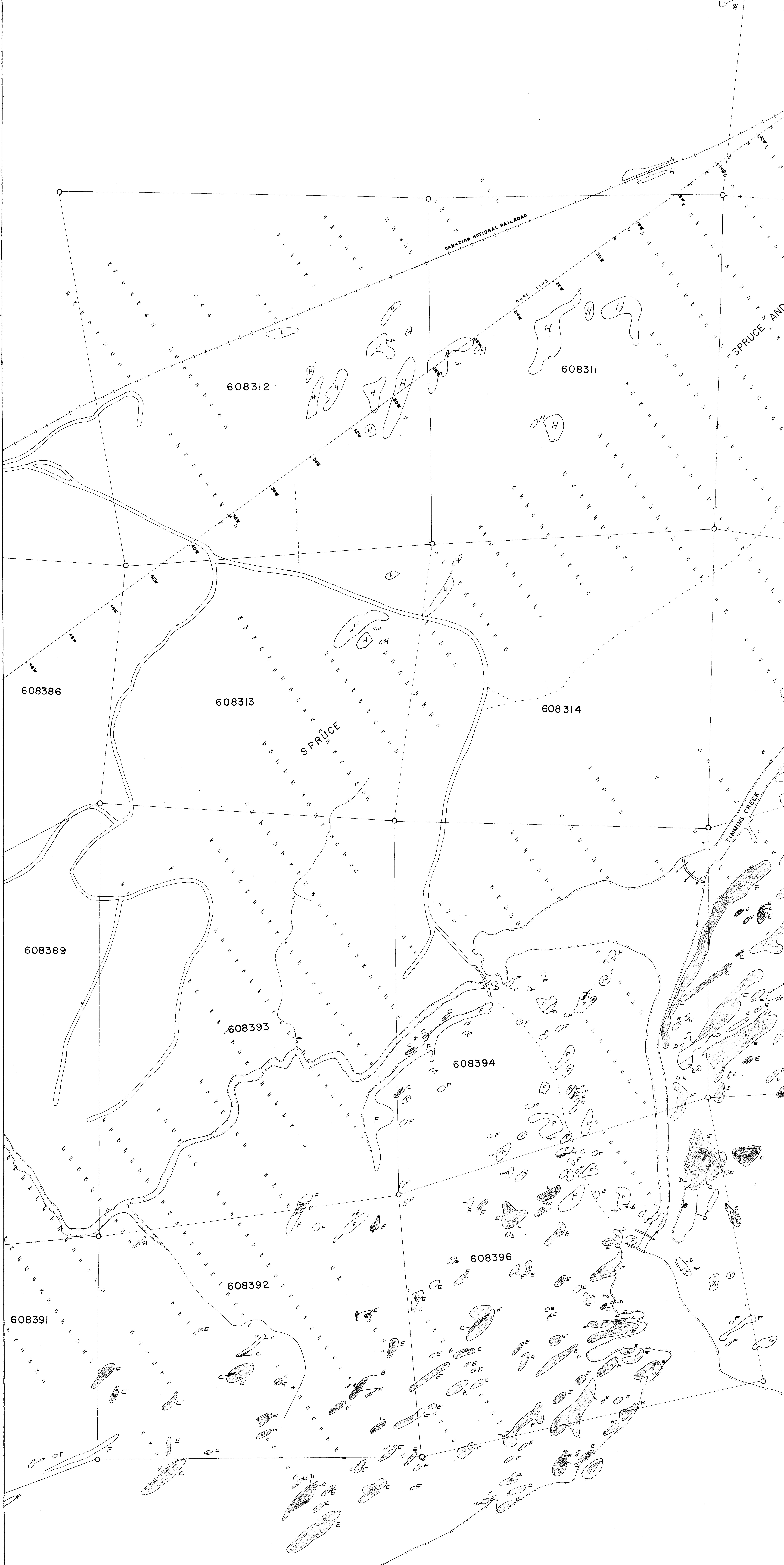


WATT - McLEAN PROPERTY PLAN OF GEOLOGY

STREET TOWNSHIP

CENTER SHEET

SCALE 1 inch = 100 feet

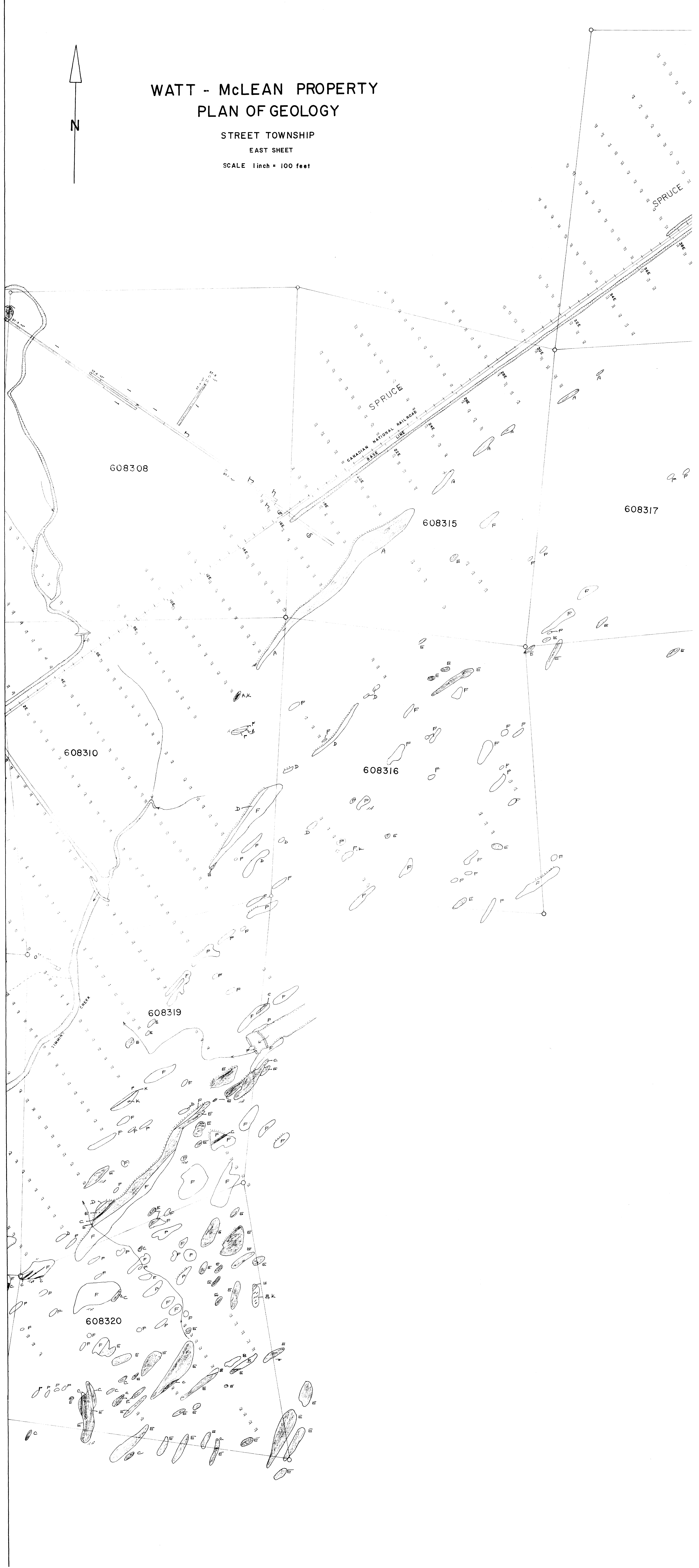
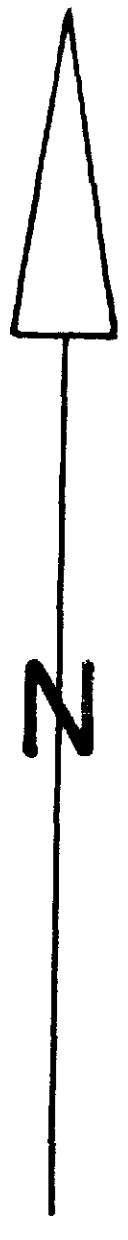


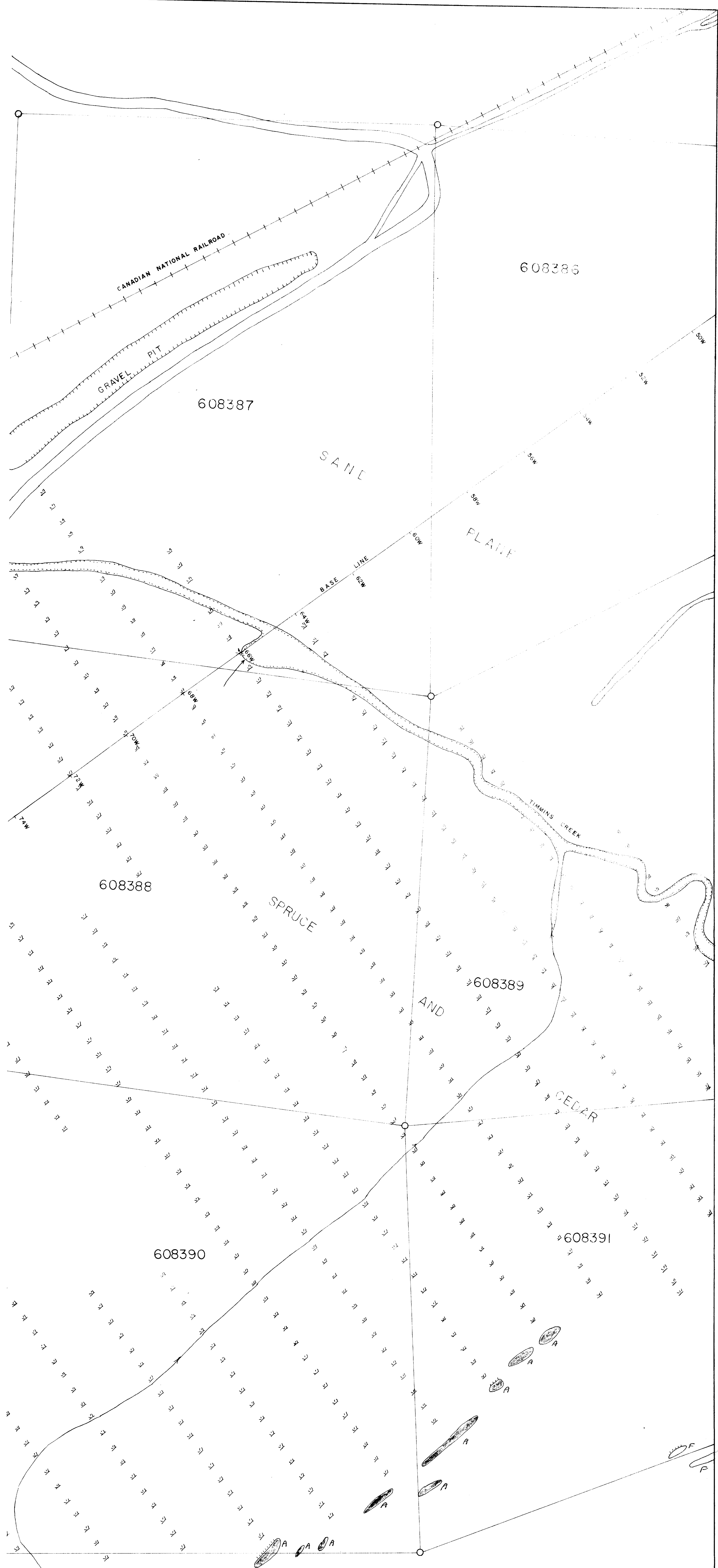
WATT - McLEAN PROPERTY PLAN OF GEOLOGY

STREET TOWNSHIP

EAST SHEET

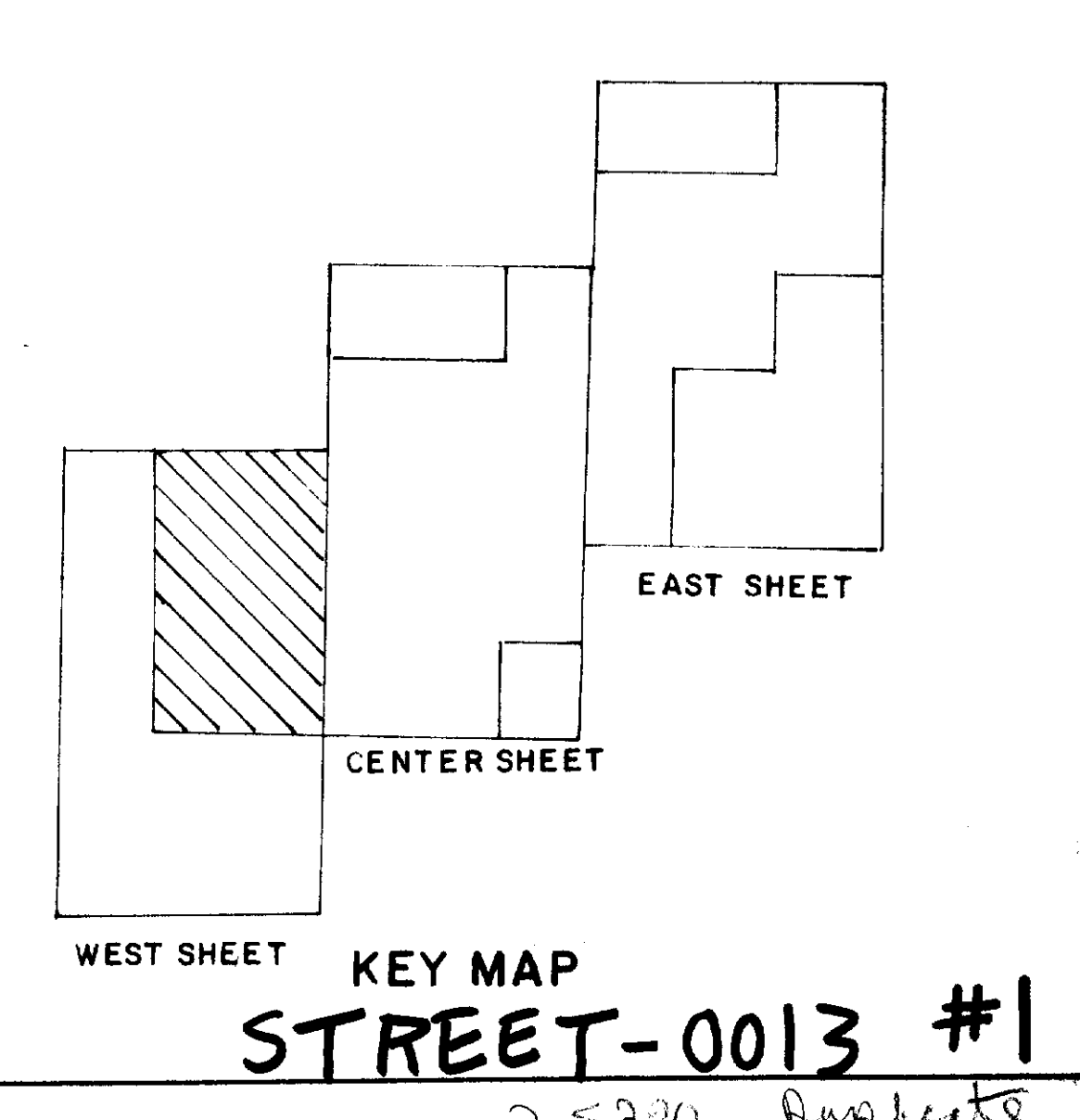
SCALE 1 inch = 100 feet

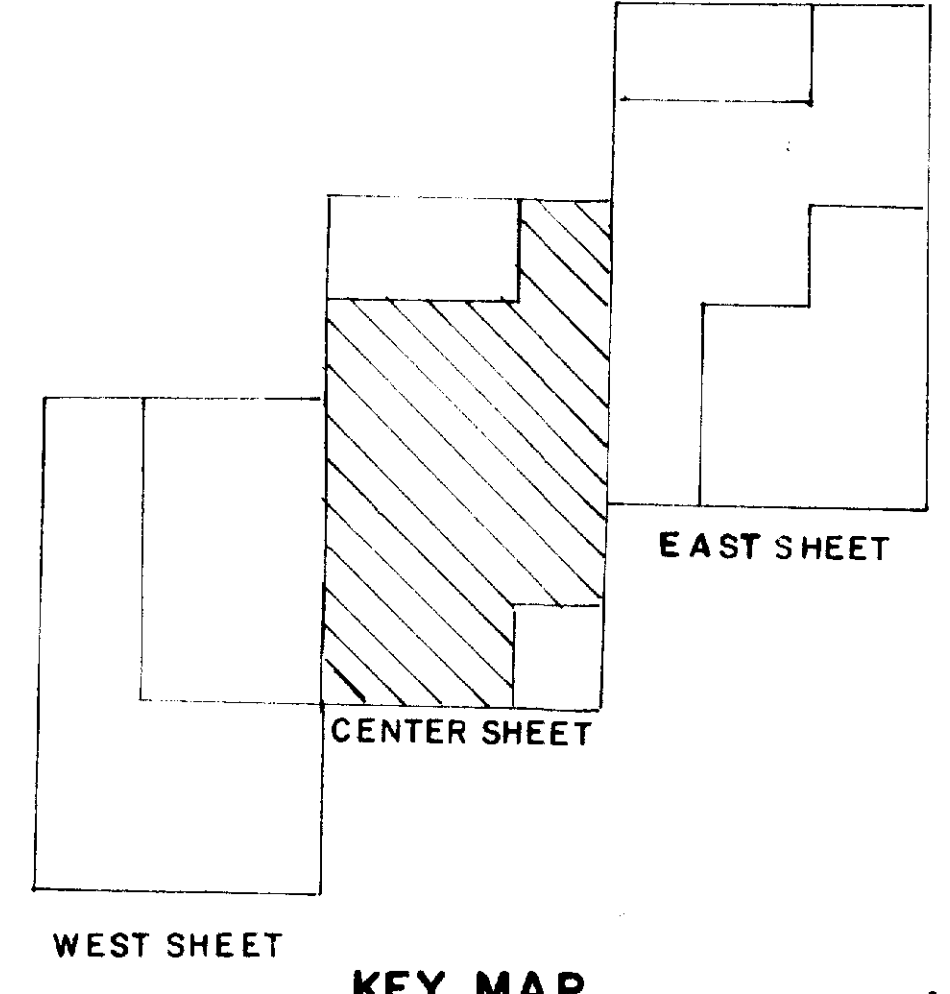
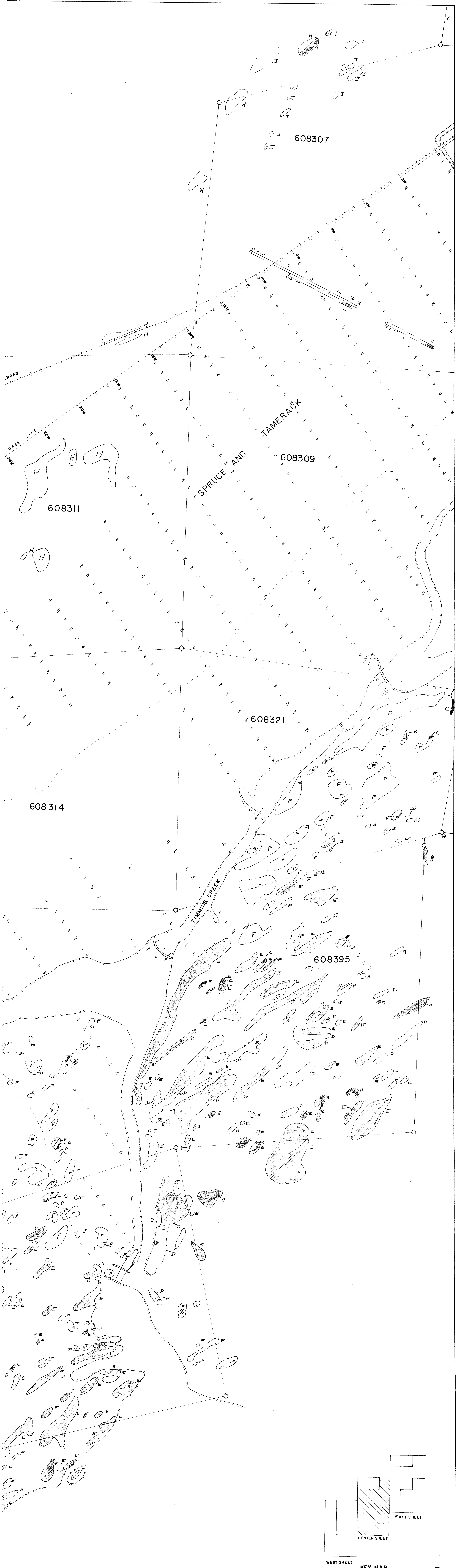




AN PROPERTY

TOWNSHIP
T SHEET
 ch = 100 feet





KEY MAP
STREET-0013 #2

