

FALCONBRIDGE-0018-D1

Load: 16 mm

RUFF JACK PROSPECTING SYNDICATE, FALCONBRIDGE, ONTARIO

Borehole # 1

Strike N 20°E

Dip - 55°

-
- 0.0
- 17.0 Casing - overburden
- 100.0 QUARTZITE - massive, fine grain - dark grey, occasional slip - coated with white mica and chlorite - mineralized slightly with small cubic crystals of pyrite (less than 1mm to a side) and rare specks of chalcopyrite - sulphides comprise less than 1% of rock.
- 125.0 QUARTZITE - massive as above.
- 137.9 QUARTZITE - slightly sheared, otherwise same as above.
- 141.2 MASSIVE SULPHIDES - about 10% unreplaced quartzite fragments - sulphides consist of about 55% pyrite 35% pyrrhotite and less than 1% chalcopyrite. - the pyrite is in crystals which range from about 1mm to 10mms in size both octahedral and cubic crystals are present - the pyrrhotite is fine grain massive - chalcopyrite is disseminated in specks and streaks.
- 142.8 DISSEMINATED SULPHIDES - consist of about 10% sulphides & 90% slightly sheared quartzite - the sulphides consist of about equal amounts of pyrite and pyrrhotite and about 1% chalcopyrite.
- 200.0 QUARTZITE - massive - fine grain with occasional conglomerate bands - pebbles are round and composed mainly of fine grain quartz - they range in size from 1/4" to 1 1/2" and are lighter coloured than matrix.

CORE logged from 0.0 to 220.0 ft. by Paul Haskey

Core held by W. M. Brady

At Garson, Ontario, Lot No. 2, Con. 1, Garson, Ontario.

**DUPLICATE COPY
POOR QUALITY ORIGINAL
TO FOLLOW**

THE RUFF JACK COPPER & NICKEL PROSPECTING SYNDICATE

Diamond drill Log-

Bore Hole No. 1 Dip -55° Strike : N

Northeast corner of claim No. 52307

200.0

237.0 Quartzite - massive - numerous slips and bands coated with sericite or white mica - locally weakly sheared - light grey in colour, fine grain and sugary texture - very rare disseminated pyrite cubes which range from 10mms to less than 1 mm in size.

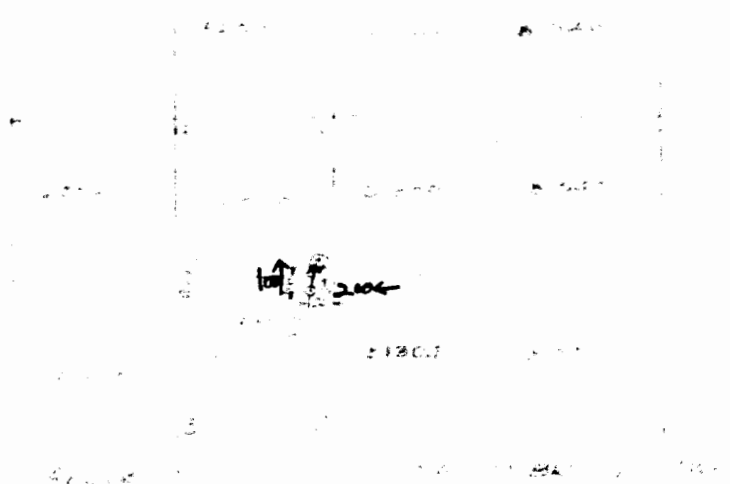
239.0 Biotite schist - dark grey to black, fine grain, occasional 10mm cube of pyrite.

288.0 Quartzite - massive - as a bore.

P. C. Haskey

Nov. 2, 1949

**DUPLICATE COPY
POOR QUALITY ORIGINAL
TO FOLLOW**



Scale 1:1000
1:1000

