



41I10SE2004 2.20346 STREET

010

**SHORT INTERNAL
REPORT FOR
EMERALD ISLE
ON

STREET TWP
GARNET PROPERTY**

BY
P.A.R BROWN
MINING GEOLOGIST

JANUARY 2000

2.20346

P.A.R Brown
27 Jan / 2000.



41I10SE2004 2.20346 STREET

010C

CONTENTS

	PAGE
PROPOSED DRILLHOLES.....	1
ESTIMATE OF TONS/DRILLHOLE SECTION.....	2
ESTIMATE OF WASTE/SECTION.....	2
SUMMARY.....	2
TENTATIVE PIT OUTLINE.....	3
CROSS SECTIONS.....	4 TO12

1043381

1043382

1043378

1043377

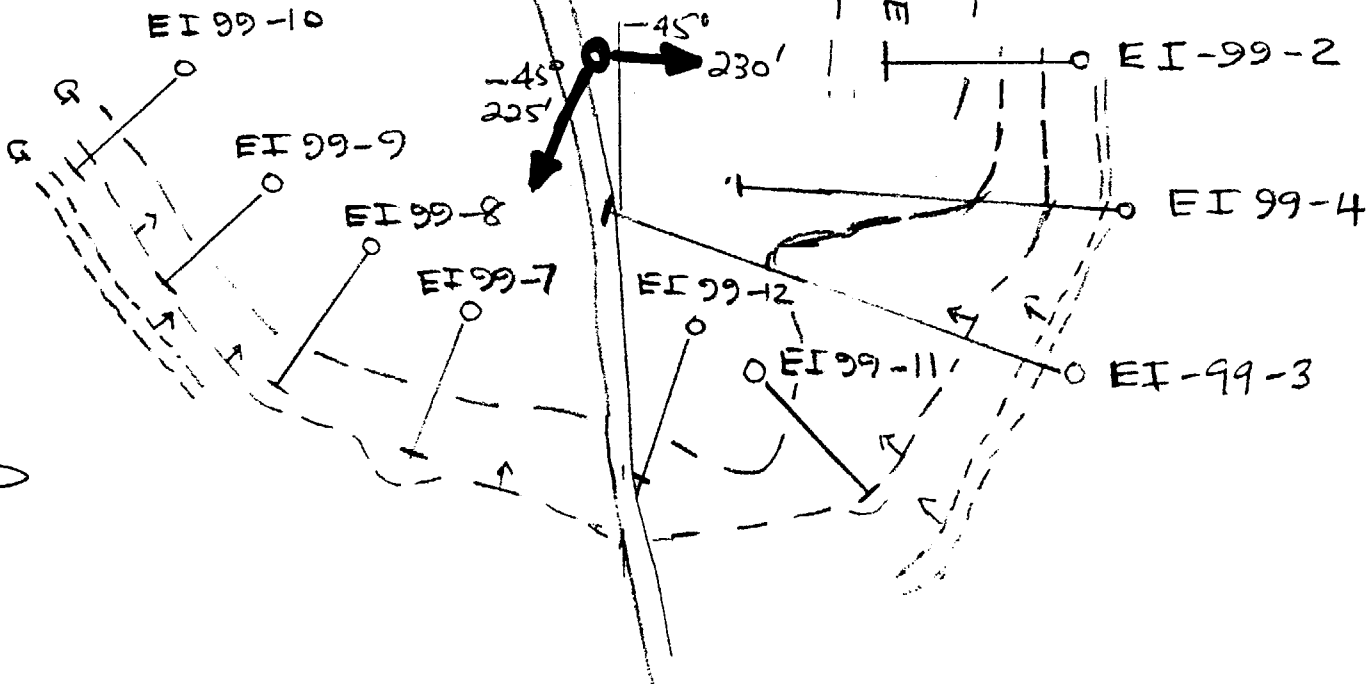


*2 *3
*1 *4

○ EI 99-6
○ EI-99-1
○ EI 99-5

ROAD

GARNET ZONE



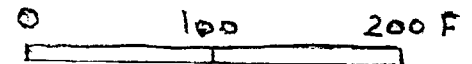
PROPOSED DRILLHOLES

* SEE SECTIONS, EI-99-2 ~ EI-99-7.

DRILLHOLE LOCATION PLAN

STREET TWP, 0N17

SCALE 1 INCH = 100 FT
1:1200



Page 1

PA 15

Estimate of tons/drillhole section, and waste to be removed.

Hole no.	influence	thickness	depth	cu ft	/8=tons
EI-99-2	100ft	75ft	100ft	750,000	93,750
EI-99-4	70	40	80	224,000	28,000
EI-99-3	70	140	100	980,000	122,500
EI-99-11	80	75	80	300,000	37,500
EI-99-12	100	60	60	360,000	45,000
EI-99-7	100	50	60	300,000	37,500
EI-99-8	80	40	50	160,000	20,000
EI-99-9	70	40	50	87,500	11,000
EI-99-10	50	20	50	40,000	5,000

Total 400,250

I would expect the grade to be in the 25% range and even 30% garnet content.

Waste to be removed per section	60,000
(NB 10 cu ft used)	17,000
	52,500
	nil
	15,000
	12,000
	8,000
	10,000
	5,000
Total	175,000

Summary: 400,000 tons @ 25% gives 100,00 tons of garnet at a stripping ratio of 0.5 to 1. However the recommended holes should be drilled as the deposit could supply a considerably greater tonnage if it can be shown that the horizon in hole #2 is above the other zone. The potential to double the ore exists and lower the waste to be removed.

The estimate of garnet content is based on the recoveries compared to my visual estimates.

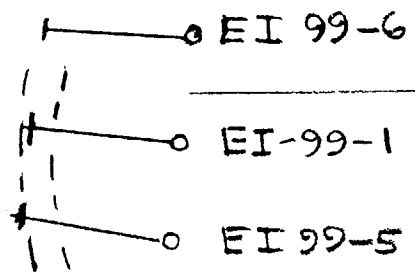
1043381

1043382

1043378

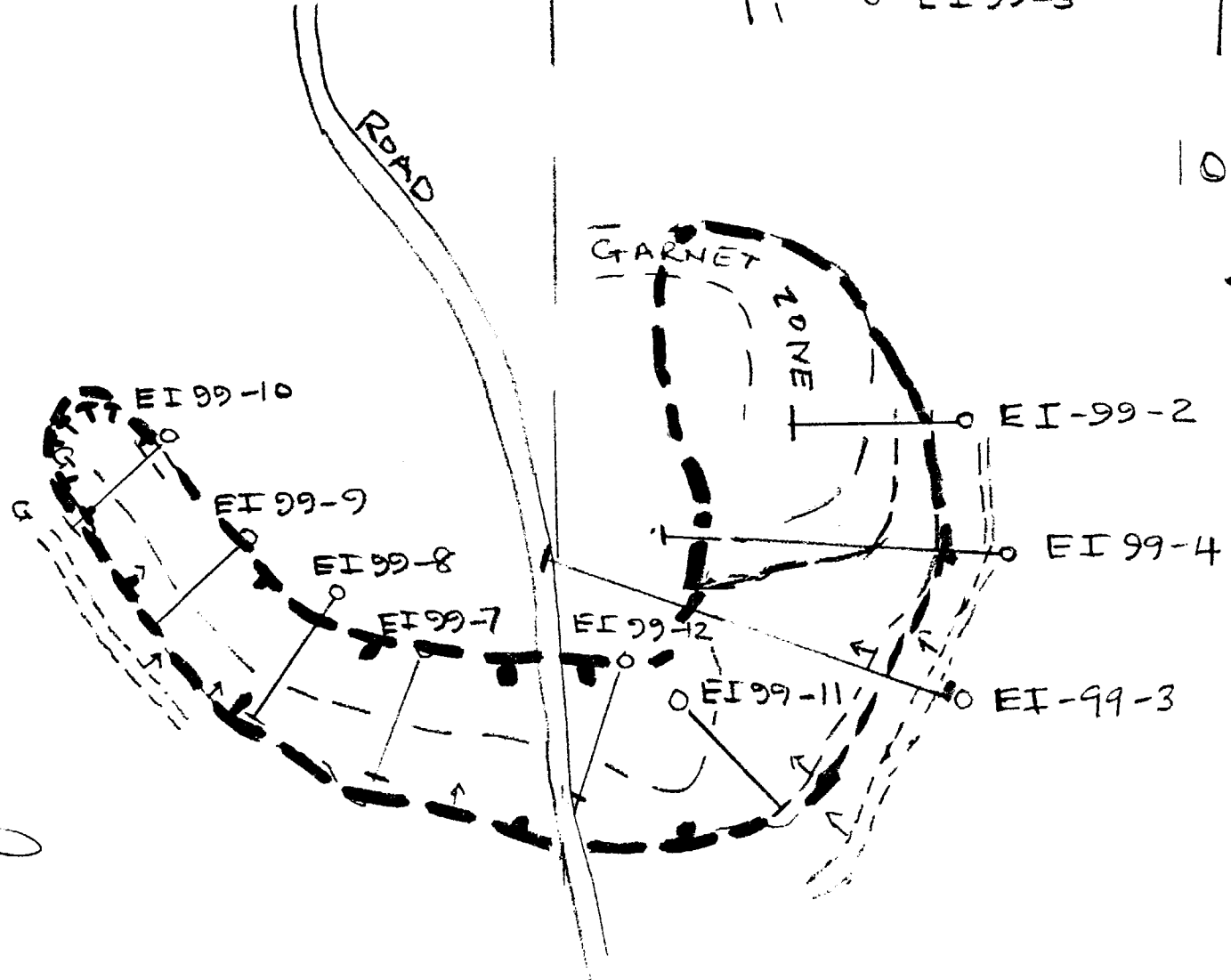


*2 *3
 *1 *4



1043377

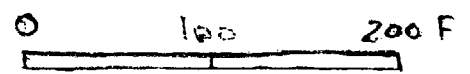
TT POSSIBLE PIT
 OUTLINE



DRILLHOLE LOCATION
PLAN

STREET TWP, ONT

SCALE 1 INCH = 100 FT
 1 : 1200

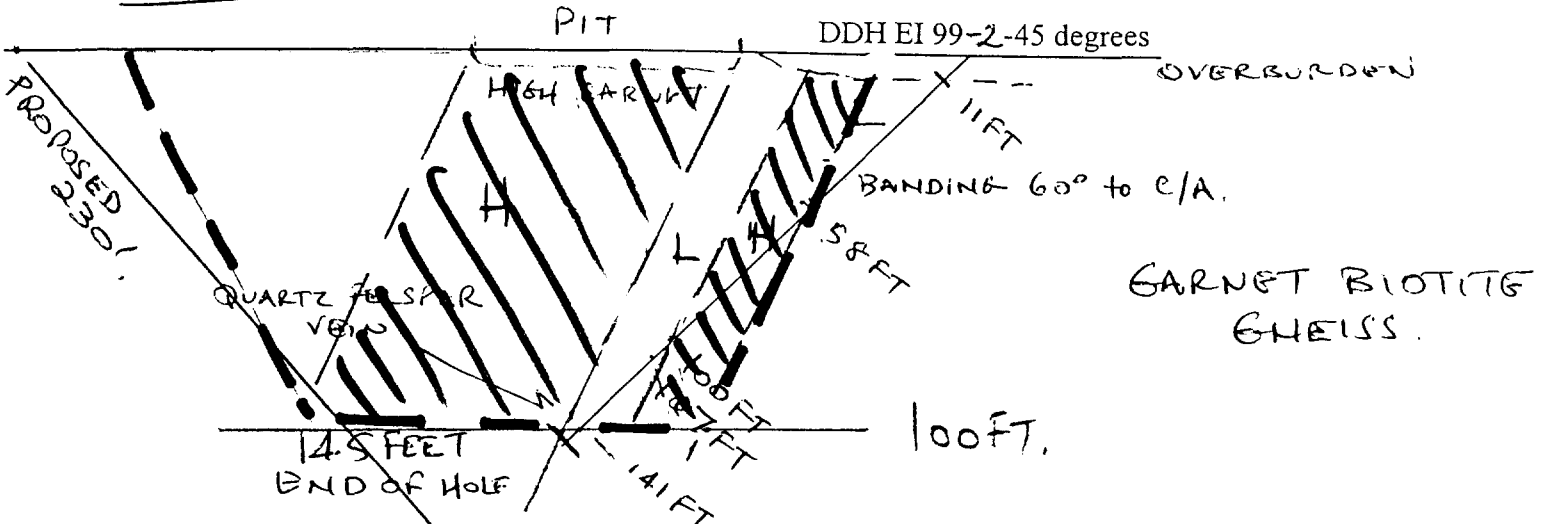


PARB

Page 3

100' Influence WEST

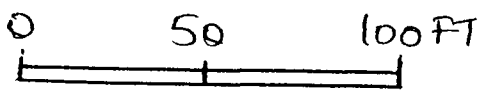
EAST



||| ORE.

- H HIGH % GARNET
- L LOW % GARNET
- M MEDIUM % GARNET

SCALE 1 inch = 50 ft

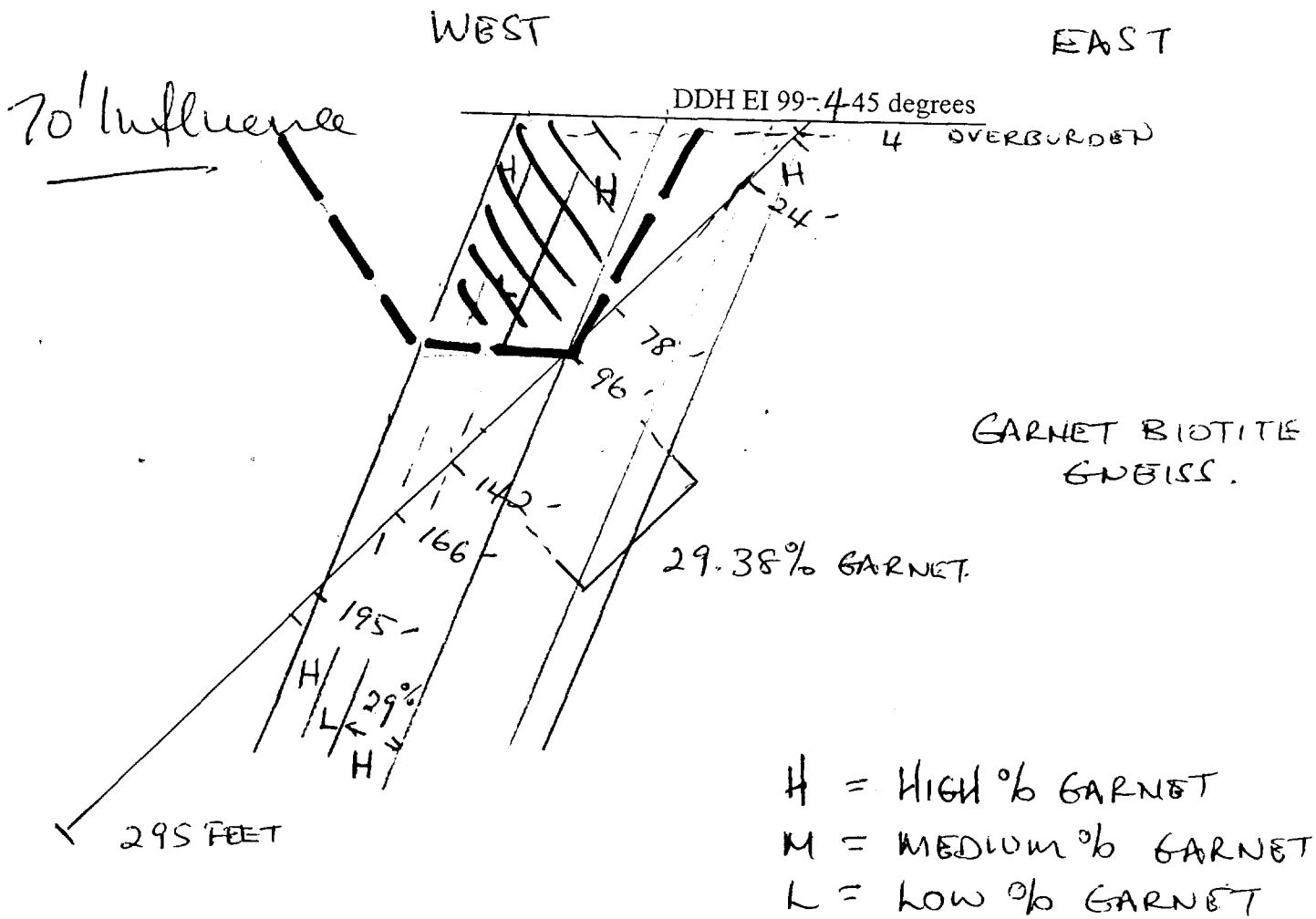


1 : 600

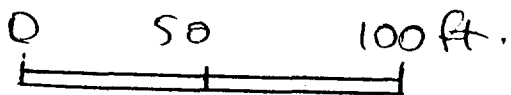
DDH - EI - 99 - 2
 STREET TWP ONT.
 CLAIM No. 1043377
 325 ft south, 245 ft east
 of # 4 POST.
 BEARING 273°.

DRILLER: RON FOULIN

Page 4 PAB



SCALE 1 inch = 50 feet



1:600

DDH - EI - 99 - 4
STREET TWP ONT.
CLAIM No. 1043377
400 ft South, 270 ft east
of # 4 POST.
BEARING 275°.

DRILLER: RON FOU LIN (RONKOR)

Page 5 PARBUN

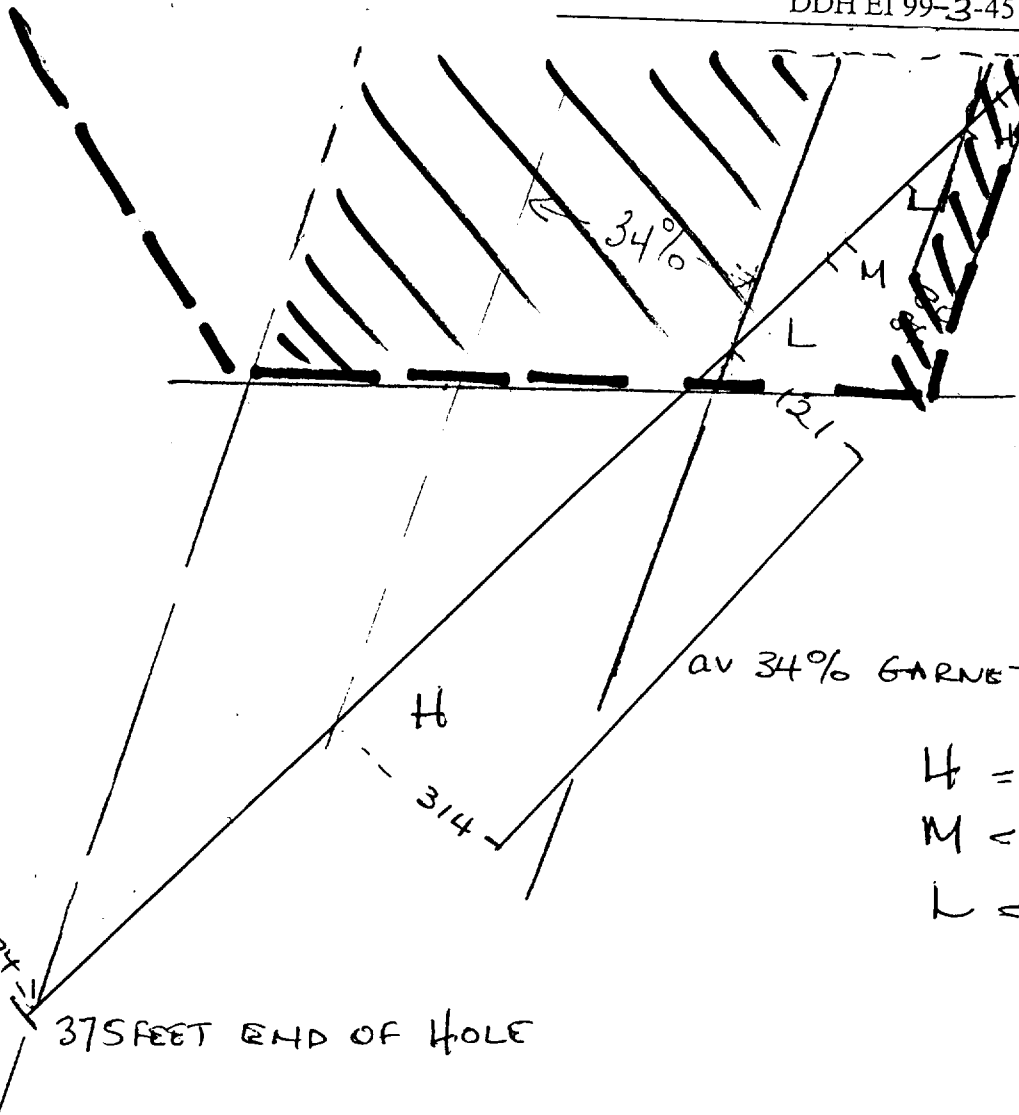
WEST

EAST

70 foot Influence

DDH EI 99-3-45 degrees

OVERBURDEN



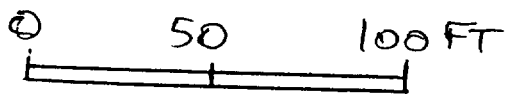
GARNET BIOTITE GNEISS.

av 34% GARNET

- H = HIGH % GARNET
- M = MEDIUM % GARNET
- L = LOW % GARNET

375 FEET END OF HOLE

SCALE 1 inch = 50 feet



1 : 600

DDH - EI - 99 - 3

STREET TWP ONT.

CLAIM No. 1043377

490 ft south, 245 ft east of # 4 post.

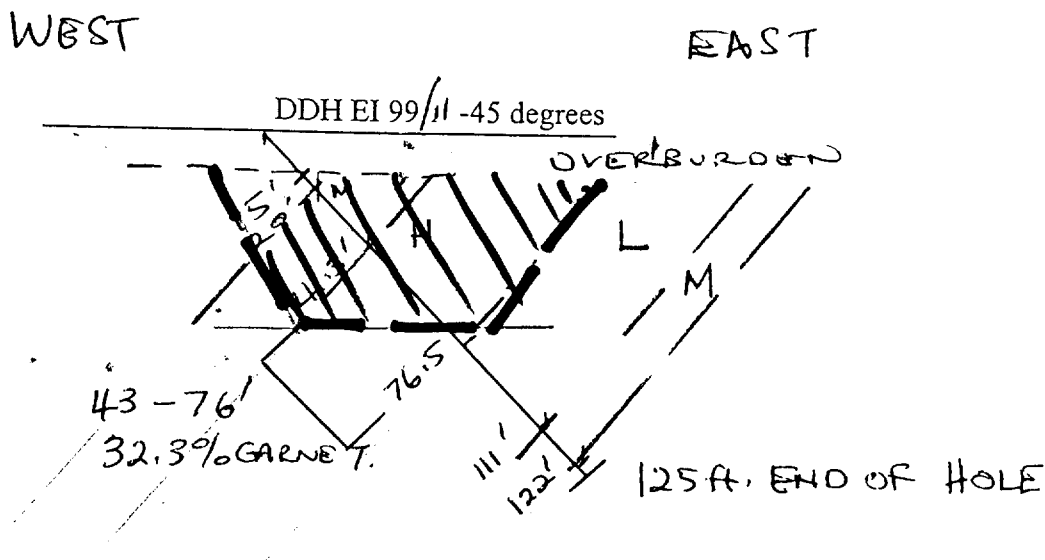
BEARING 290°.

DRILLER: RON LOULIN

page 6 PAR Brum.

80' Influence

GARNET BIOTITE
GNEISS



H = HIGH % GARNET
 M = MEDIUM % GARNET
 L = LOW % GARNET

SCALE 1 inch = 50 feet

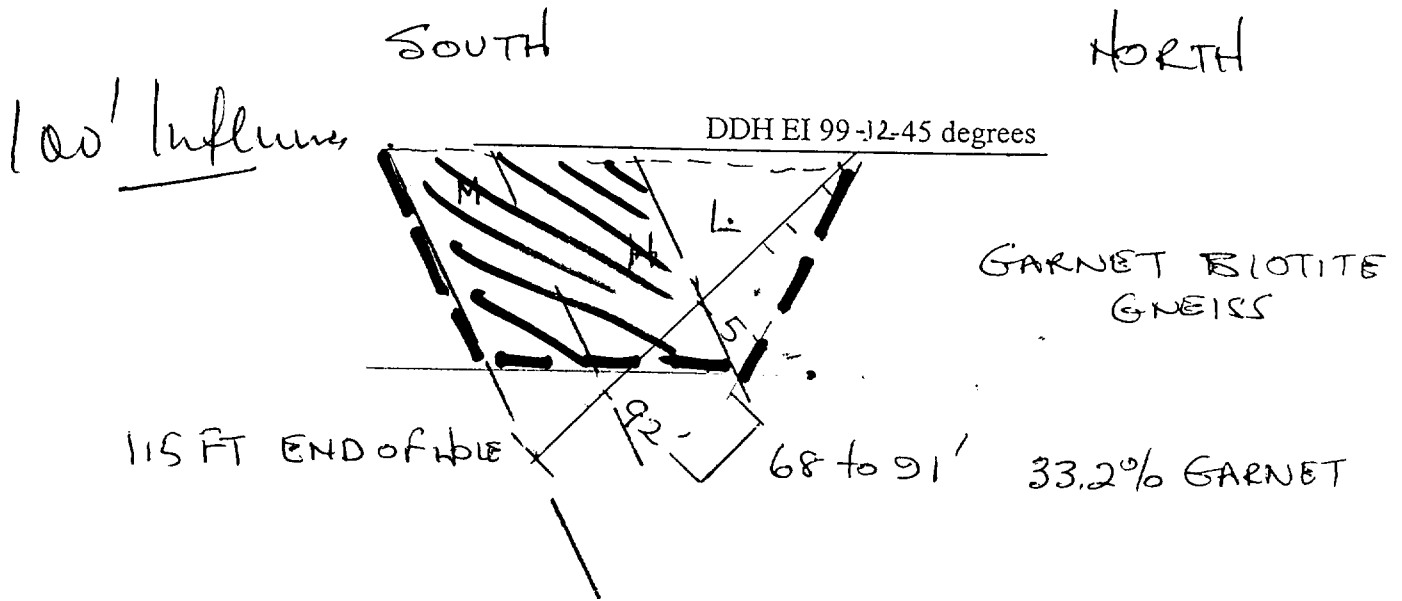


1:600

DDH - EI - 99 - 11
 STREET TWP ONT.
 CLAIM No. 1043377
 485 FT SOUTH, 70 FT EAST
 OF #4 POST
 BEARING 135°

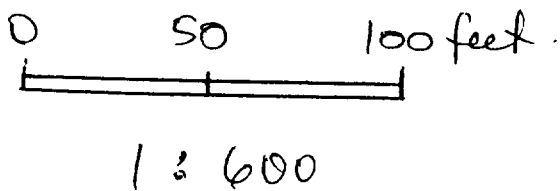
DRILLER: RON POULIN (RONKOR)

Page 7 PAB 0000



H = HIGH % GARNET
 M = MEDIUM % GARNET
 L = LOW % GARNET.

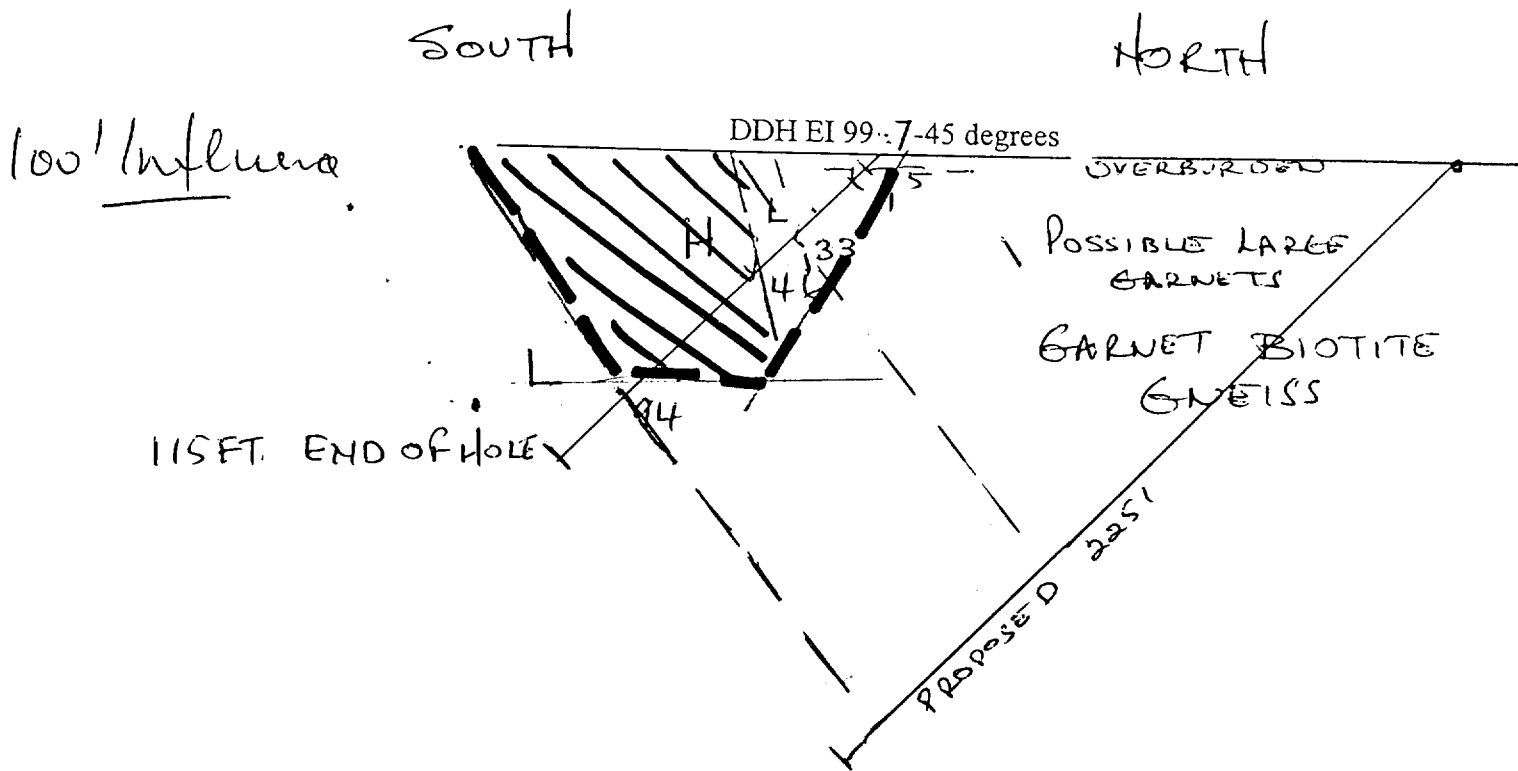
SCALE 1 inch = 50 feet



DDH - EI - 99 - 12
 STREET TWP ONT.
 CLAIM No. 1043377
 465' SOUTH, 40 FT EAST
 OF #4 POST.
 BEARING 200°.

DRILLER: RON LOULIN (RONKOR)

Page 8 *[Signature]*



H = HIGH % GARNET
 M = MEDIUM % GARNET
 L = LOW % GARNET.

SCALE 1 inch = 50 feet



1 : 600

DDH - EI - 99 - 7
 STREET TWP ONT.
 CLAIM No. 1043378
 435 FT. SOUTH, 75 FT WEST
 OF #1 POST,
 BEARING 200°.

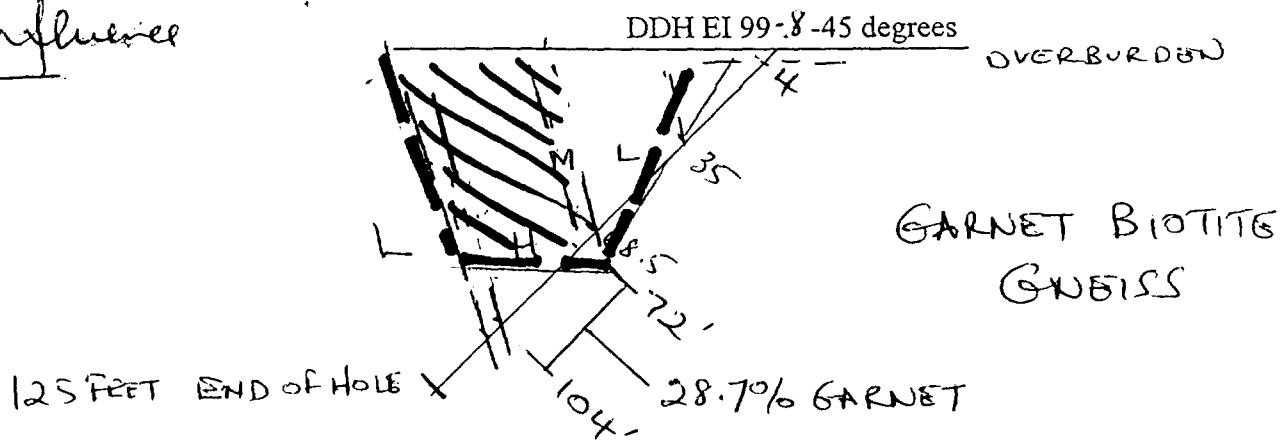
DRILLER: RON FOU LIN

Page 9 P.A. Brown

80' Influence

SOUTH

NORTH



H = HIGH % GARNET
 M = LOW % GARNET
 L = LOW % GARNET

SCALE 1 inch = 50 feet



1 : 600

DDH - EI - 99 - 8

STREET TWP ONT.

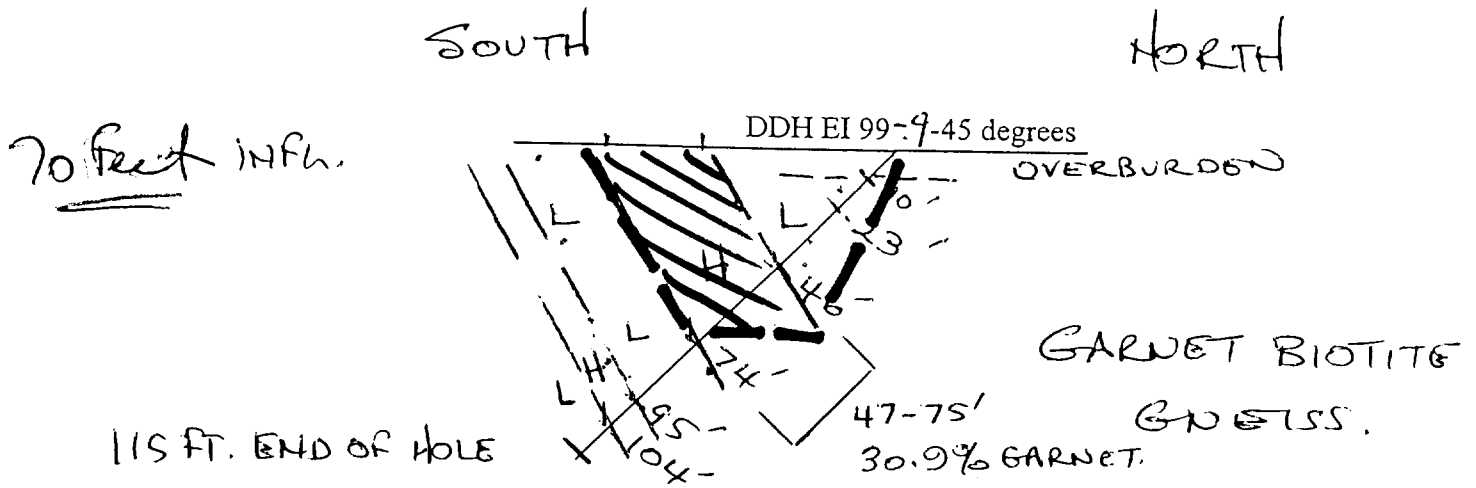
CLAIM No. 1043378

420 FT SOUTH, 125 FT WEST OF #1 POST.

BEARING 215°.

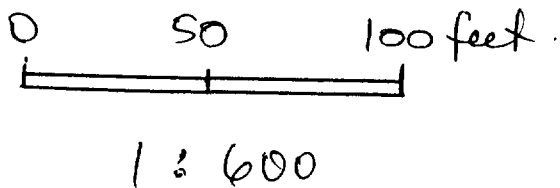
Page 10 P. Arbores

DRILLER: Ron Poulin



H = HIGH % GARNET
 M = MEDIUM % GARNET
 L = LOW % GARNET

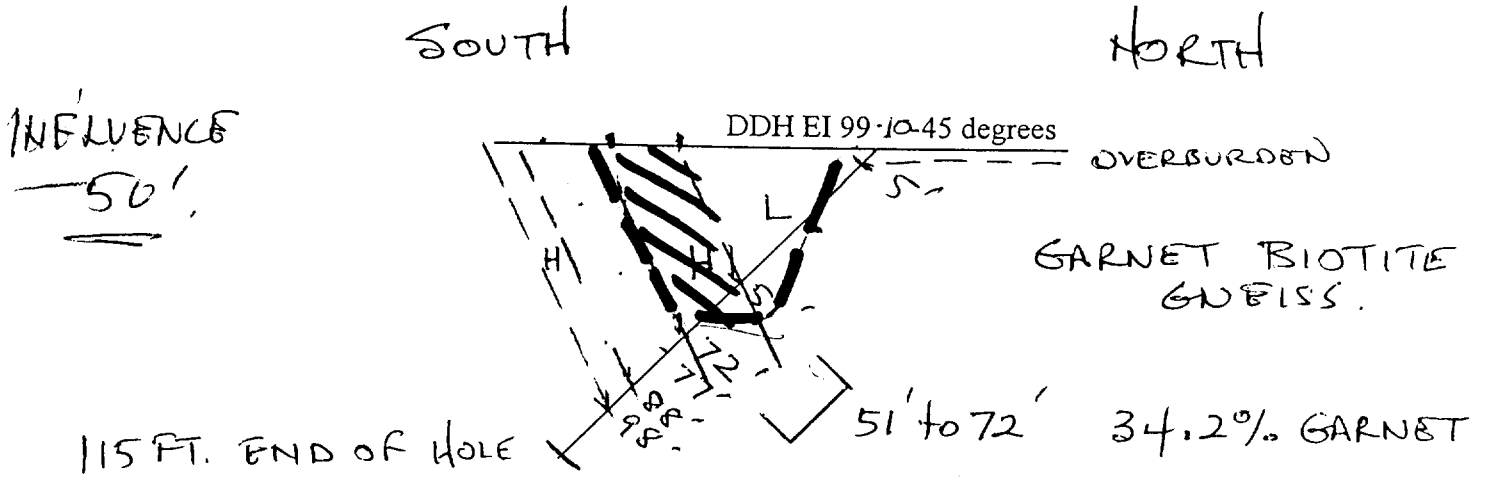
SCALE 1 inch = 50 feet



DDH - EI - 99 - 9
 STREET TWP ONT.
 CLAIM No. 1043378
 390 ft. SOUTH, 180 ft. WEST
 OF #1 POST.
 BEARING 230°.

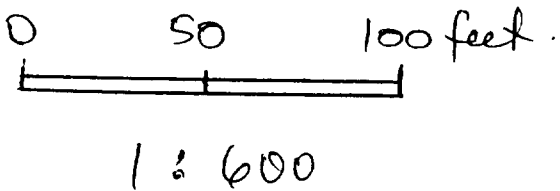
DRILLER: RON POULIN (RONKOR)

Perce P. Arden



H = HIGH % GARNET
 M = MEDIUM % GARNET
 L = LOW % GARNET.

SCALE 1 inch = 50 feet



DDH - EI - 99 - 10
 STREET TWP ONT.
 CLAIM No. 1043378
 330 FT SOUTH, 230 FT WEST
 OF #1 POST.
 BEARING 230°.

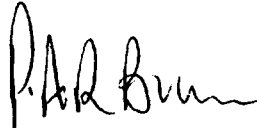
DRILLER: RON FOULIN

Page 12 P. A. Brown

DDH EI-99-1

Location: STREET TWP 25ft south, 195ft east of #4 post of
Claim no. 1043377
Dip: -45 deg.
Bearing: 280 deg
Core size: BQ
Core stored at Erana Mines, Fielding Rd, Sudbury, Ont.
Date hole started: 4th August/99
Date hole finished: 4th August/99
Logging completed : August 26th/99
Core logged by P.A.R.Brown, Mining Geologist, BSc. A.R.S.M
Driller: Ronkor

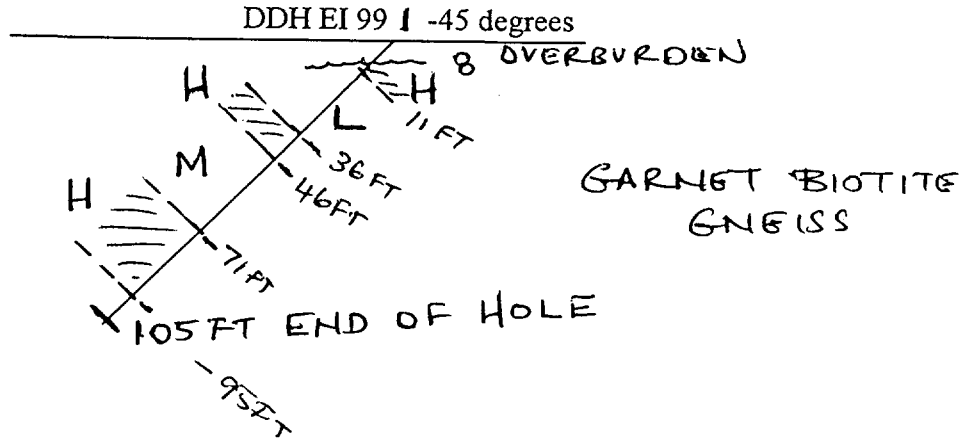
0 to 8 ft	Casing
8 to 11ft	Garnet biotite gneiss. Large garnets, med to high % garnet
11to 29ft	Low % garnet. Phlogopite rich with banding 70 to 80 deg to c/a
29 to 36ft	Low % garnet
36 to 46ft	High % garnet in qtz and phlogopite rich section, plus kyanite
60 to 71ft	low to medium % garnet
71 to 95 ft	high % garnet in qtz rich section with banding 90 deg to c/a
95 to 105ft	low to no garnet
105ft	E.O.H



#	number	ft	feet	cl	claim
qtz	quartz	c/a	core axis	deg.	degrees
E.O.H	end of hole.	no.	number		

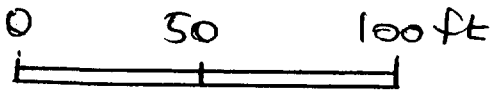
WEST

EAST



- H HIGH % GARNET
- M MEDIUM % GARNET
- L LOW % GARNET.

SCALE 1 inch = 50 ft



1 : 600

DDH - EI - 99 - 1

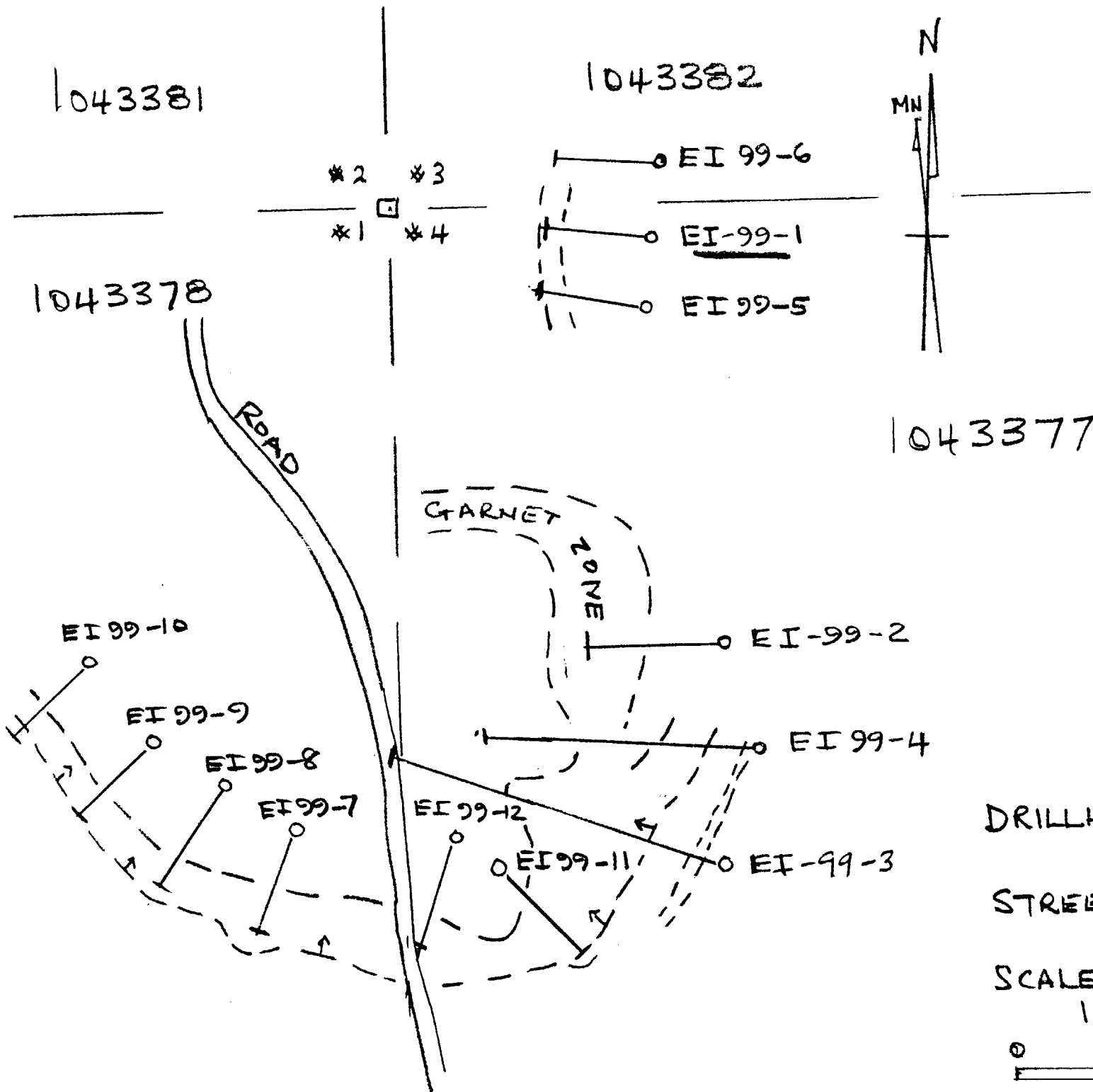
STREET TWP ONT.

CLAIM No. 1043377

25 ft South, 195 ft east
of # 4 post.

BEARING 280°.

DRILLER: RON FOU LIN

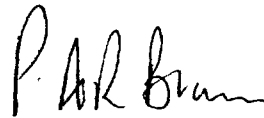


P.A.R.B.

DDH EI-99-2

Location: STREET TWP 325ft south, 245 ft east of #4 post of
Claim no. 1043377
Dip: -45 deg
Bearing: 273 deg.
Core size : BQ
Core stored at ERANA MINES, Fielding Road, Sudbury ,Ont.
Date hole started: 5th August/99
Date hole finished: 5th August/99
Logging completed: August 26th/99
Core logged by P.A.R.Brown, Mining Geologist, BSc., A.R.S.M
Driller:RONKOR

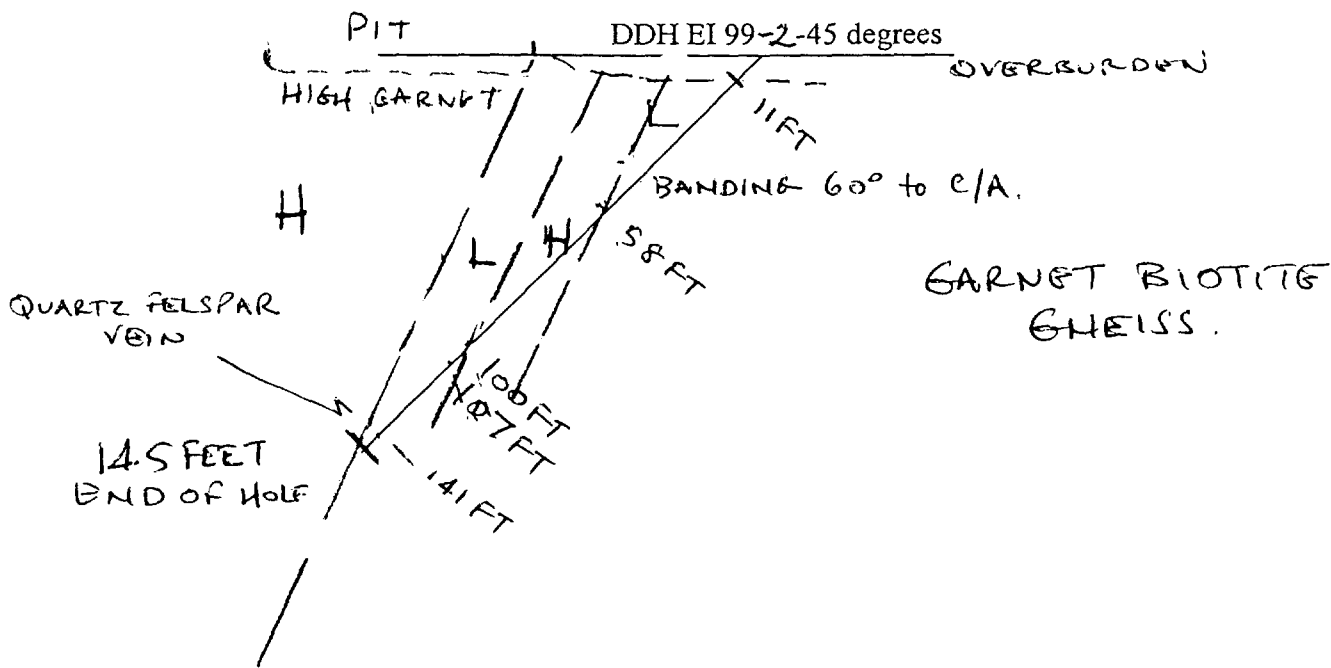
0 to 11 Casing
11 to 40 Garnet biotite gneiss with low % garnet
40 to 58ft Low % garnet, except 50 to 51 ft (high) banding 60 deg to c/a
58 to 100ft large garnet 1 to 2 inches, high % garnet also
100 to 107 medium % garnet
107 to 141 ft very low % garnet
141 to 145ft qtz felspar vein , banding 70 to 80 deg to c/a
145 E.O.H



#	number	deg	degrees	%	percentage
ft	feet	c/a	core axis	qtz	quartz
E.O.H.	end of hole	no.	number		

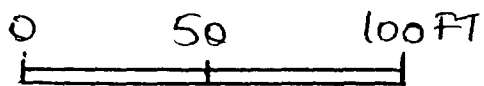
WEST

EAST



- H HIGH % GARNET
- L LOW % GARNET
- M MEDIUM % GARNET

SCALE 1 inch = 50 ft

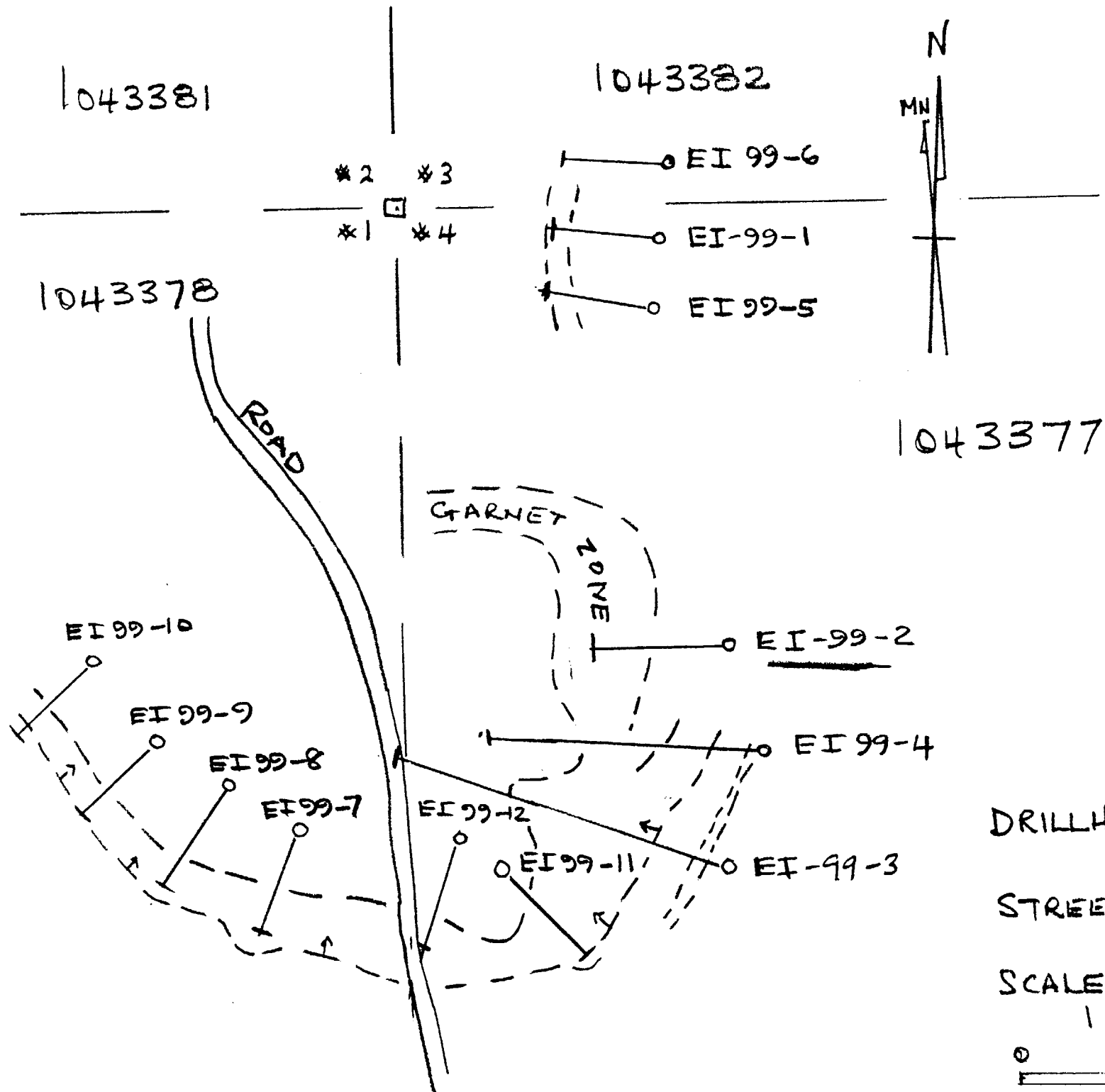


1 : 600

DDH - EI - 99 - 2
 STREET TWP ONT.
 CLAIM No. 1043377
 325 ft south, 245 ft east
 of # 4 POST.
 BEARING 273°.

DRILLER: RON FOULIN

Parbun



DRILLHOLE LOCATION
PLAN

STREET TWP, ONT

SCALE 1 INCH = 100 FT
1 : 1200

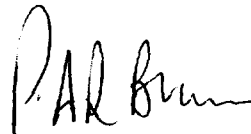


PARB.

DDH EI-99-3

Location: STREET TWP 490ft south, 245 ft east of #4 post of
Claim no. 1043377
Dip: -45 deg
Bearing: 290 deg.
Core size: BQ
Core stored at ERANA MINES, Fielding Road, Sudbury , Ont.
Date hole started: 6th August/99
Date hole finished: 6th August/99
Logging completed: August 26th/99
Core logged by P.A.R. Brown , Mining Geologist, BSc. A.R.S.M
Driller: ROKOR

0 to 9ft	Overburden
9 to 16ft	garnet phlogopite gneiss, 10% garnet (low to Med)
16 to 20ft	med to high garnet 30%
20 to 25 ft	low garnet <5%, quartz rich.
25 to 36ft	30% garnet, banding 60 deg to c/a
36 to 38	phlogopite
38 to 39ft	high % garnet
39 to 60	<i>low to zero garnet</i>
60 to 65ft	low garnet%
65 to 73 ft	low garnet %
73 to 74ft	amphibolite with pale alteration and med % garnet
74 to 80 ft	low % garnet
80 to 86 ft	medium % garnet
86 to 121ft	< 5% garnet (low) except 105 to 107ft , 20%
121 to 374ft	high % garnet except 162-166 , low % garnet and high qtz 263 to 265ft pale alteration. Any banding 45 deg to c/a a graphitic band with pyrite and qtz felspar.
374 to 375	Low % garnet
375	E.O.H



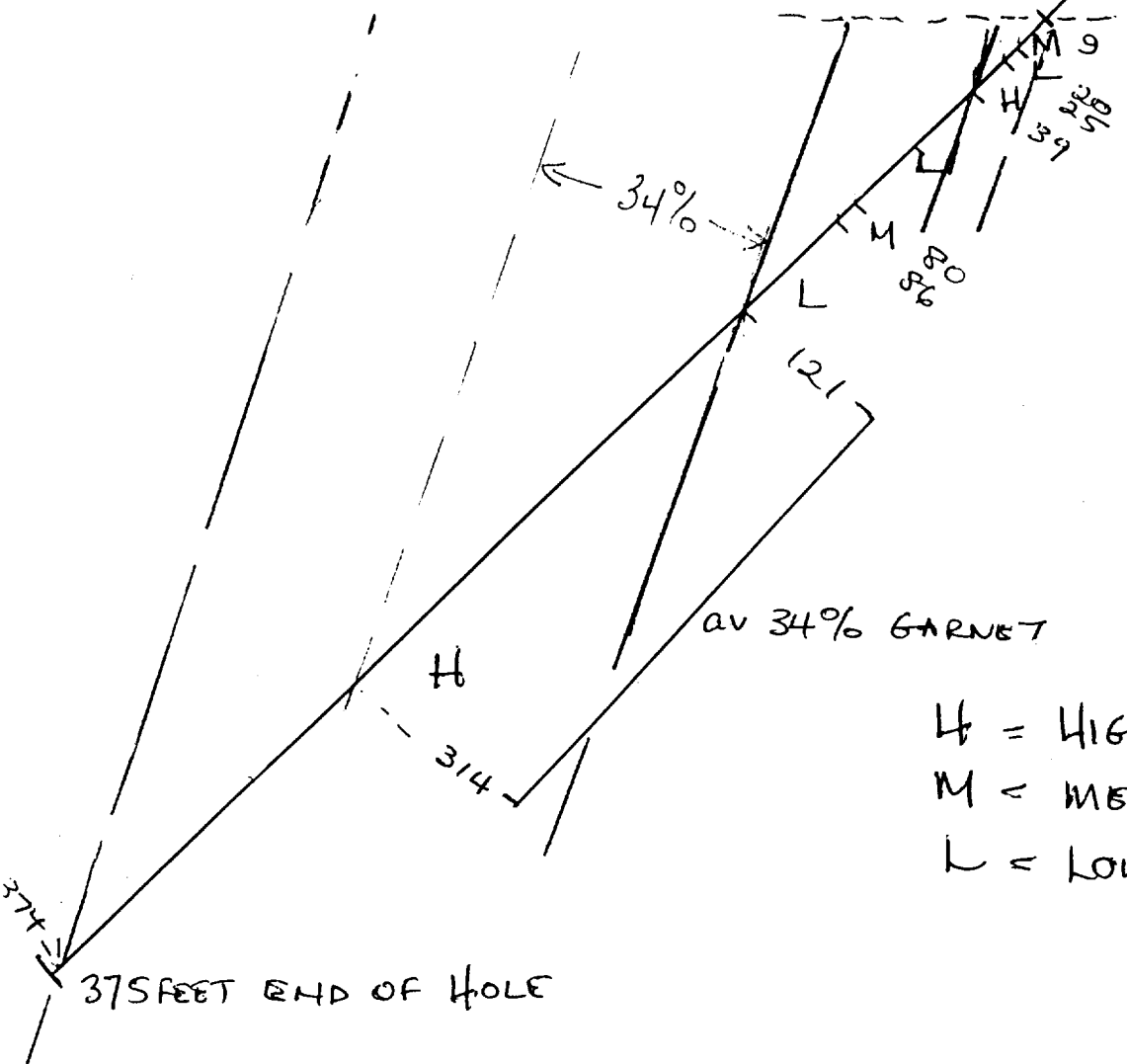
#	number	med	medium	%	percentage
<	less than	deg	degrees	c/a	core axis
qtz	quartz	E.O.H.	end of hole	ft	feet
no.	number				

WEST

EAST

DDH EI 99-3-45 degrees

OVERBURDEN



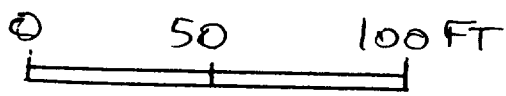
GARNET BIOTITE GNEISS.

av 34% GARNET

- H = HIGH % GARNET
- M = MEDIUM % GARNET
- L = LOW % GARNET

375 FEET END OF HOLE

SCALE 1 inch = 50 feet



1 : 600

DDH - EI - 99 - 3
 STREET TWP ONT.
 CLAIM No. 1043377
 490 ft south, 245 ft east
 of # 4 post.
 BEARING 290°.

DRILLER: RON FOULIN

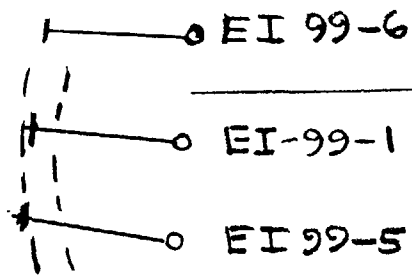
PAR Brum.

1043381

1043382



*2 *3
*1 *4



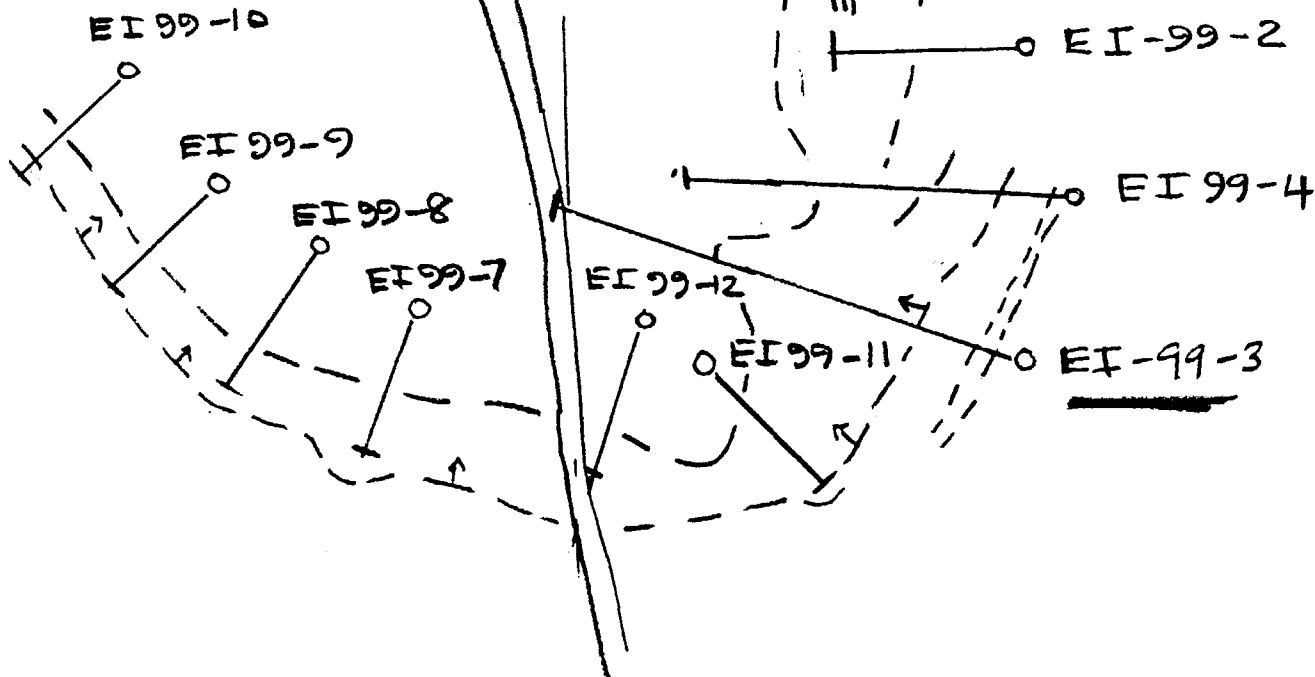
1043378

1043377

ROAD

GARNET

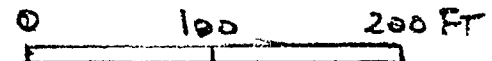
ZONE



DRILLHOLE LOCATION PLAN

STREET TWP, ONT

SCALE 1 INCH = 100 FT
1:1200



PARB.

EIR 99-03

	FOOTAGE	TAIL.	CONS.	#
1	121.5 - 125	2 lb. 4 oz.	4 lb. 1 oz.	64.
2	125 - 130	4 lb.11 oz.	4 lb. 3 oz.	44.
3	130 - 135	5 lb. 0 oz.	4 lb. 8 oz.	47.
4	135 - 140	5 lb. 7 oz.	4 lb.15 oz.	47.
5	140 - 145	5 lb. 6 oz.	2 lb. 6 oz.	30.6
6	145 - 150	6 lb. 1 oz.	4 lb. 8 oz.	43.
7	150 - 155	6 lb. 4 oz.	5 lb. 0 oz.	45.5
8	155 - 160	6 lb. 0 oz.	2 lb. 4 oz.	27.
9	160 - 165	7 lb.11 oz.	2 lb. 4 oz.	22.6
10	165 - 170	7 lb.12 oz.	1 lb.12 oz.	18.4
11	170 - 175	7 lb.12oz.	4 lb. 4 oz.	35.4
12	175 - 180	7 lb.12oz.	3 lb.13 oz.	32.9
13	180 - 185	7 lb. 1 oz.	3 lb. 4 oz.	31.5
14	185 - 190	5 lb.12 oz.	3 lb.12 oz.	42.85
15	190 - 195	8 lb.12 oz.	2 lb. 7 oz.	23.3
16	195 - 200	8 lb.15 oz.	2 lb. 1 oz.	18.75
17	200 - 205	6 lb.14 oz.	3 lb. 0 oz.	30.37
18	205 - 210	6 lb.12 oz.	3 lb. 1 oz.	31.2
19	210 - 215	6 lb. 6 oz.	3 lb.13 oz.	37.4
20	215 - 220	6 lb.11 oz.	4 lb. 0 oz.	37.4
21	220 - 225	6 lb. 7 oz.	3 lb. 7 oz.	34.8
22	225 - 230	6 lb. 0 oz.	3 lb.11 oz.	38.06

	FOOTAGE		TAIL.		CONS.	%
23	330	-	235	7 lb. 2 oz.	4 lb. 3 oz.	37.00
24	235	-	240	7 lb. 1 oz.	3 lb. 3 oz.	31.0
25	240	-	245	6 lb. 8 oz.	3 lb. 6 oz.	34.1
26	245	-	250	6 lb.14 oz.	3 lb.10 oz.	34.5
27	250	-	255	7 lb. 7 oz.	3 lb.10 oz.	32.7
28	255	-	260	7 lb. 0 oz.	3 lb. 5 oz.	32.1
29	260	-	265	6 lb. 0 oz.	4 lb. 0 oz.	40.0
30	265	-	270	6 lb.11 oz.	3 lb. 8 oz.	34.3
31	270	-	275	6 lb. 6 oz.	3 lb. 9 oz.	37.2
32	275	-	280	7 lb. 7 oz.	3 lb. 4 oz.	31.7
33	280	-	285	7 lb. 8 oz.	3 lb. 6 oz.	38.5
34	285	-	290	6 lb.15 oz.	3 lb. 7 oz.	35.2
35	290	-	295	6 lb. 6 oz.	3 lb. 5 oz.	34.1
36	295	-	300	6 lb.14 oz.	2 lb. 8 oz.	26.6
37	300	-	305	6 lb.15 oz.	4 lb. 4 oz.	37.9
38	305	-	310	6 lb.15 oz.	3 lb. 7 oz.	33.1
39	310	-	314	6 lb. 8 oz.	2 lb. 9 oz.	28.2

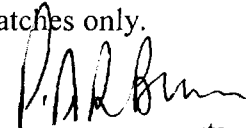
average = 34 %

DDH EI-99-4

Location: STREET TWP, Ont. 400ft south, 270 ft east of #4 post of
Claim no: 1043377
Dip: -45 deg
Bearing: 275 deg
Core size BQ
Core stored at ERANA MINES, Fielding road, Sudbury.
Date hole started: 11th August/99
Date hole finished: 13th August/99
Logging completed: August 26th/99
Core logged by P.A.R. Brown, Mining Geologist, BSc. A.R.S.M.
Driller: ROKOR

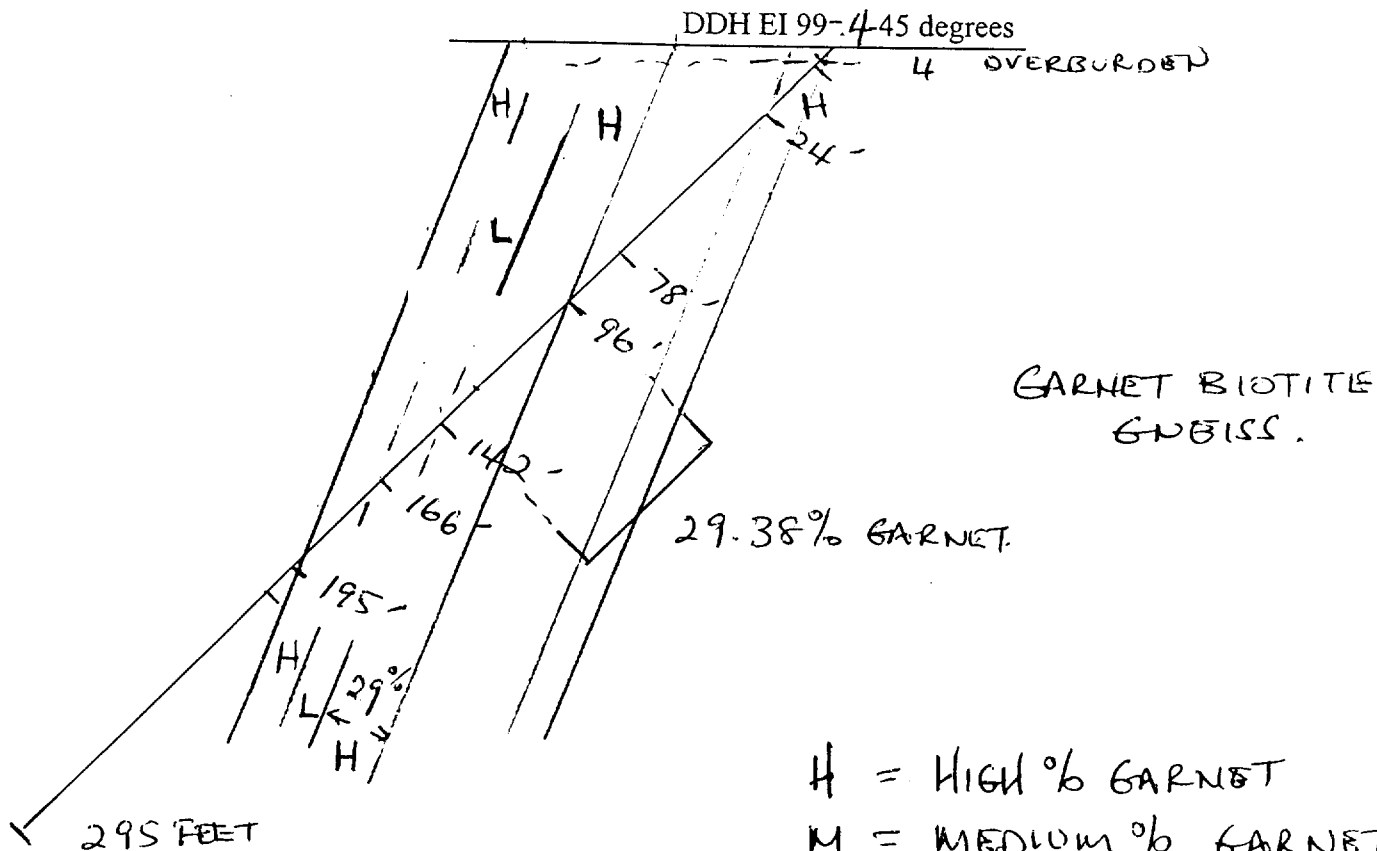
0 to 4 ft casing
4 to 7ft Garnet biotite gneiss with low % garnet , 5%
7 to 11 ft High % garnet 20 to 30%
11 to 24 ft med to high % garnet, 10 to 30% with 1/2 inch garnets
24 to 25 ft qtz vein
25 to 43.5 ft small garnets and low % , 5%
43.5 to 44.5 ft pale alteration with medium % garnet up to 20%
44.5 to 49 ft low to zero garnet
49 to 51 ft qtz vein with amphibole
51 to 60 ft low to zero garnet
60 to 78 ft med to high garnet
78 to 96 ft low % garnet , 5%
96 to 142 ft very high % garnet above 30%. size of garnet to 3/4 in
at 120ft splash of cpy.
126 to 128 med to low % garnet
130 to 133 low % garnet
142 to 166 ft low % garnet
166 to 195 ft very high % garnet with 2 inch crystals
195 to 206 ft low to medium % garnet
206 to 223 ft greenish fine grained amphibolitic and no garnet
223 to 224 ft med to high % garnet
224 to 236 ft fine grained and no garnet
236 to 237 ft a few large garnet, low % , <5%
237 to 246 ft qtz rich gneiss with low % garnet
246 to 265 ft low % garnet only a few scattered large ones
265 to 295 ft low % garnet with scattered patches only.
295 E.O.H

number med medium qtz quartz
cpy chalcopyrite < less than deg degrees
ft feet no. number E.O.H end of hole



WEST

EAST



H = HIGH % GARNET
M = MEDIUM % GARNET
L = LOW % GARNET

SCALE 1 inch = 50 feet



1:600

DDH - EI - 99 - 4

STREET TWP ONT.

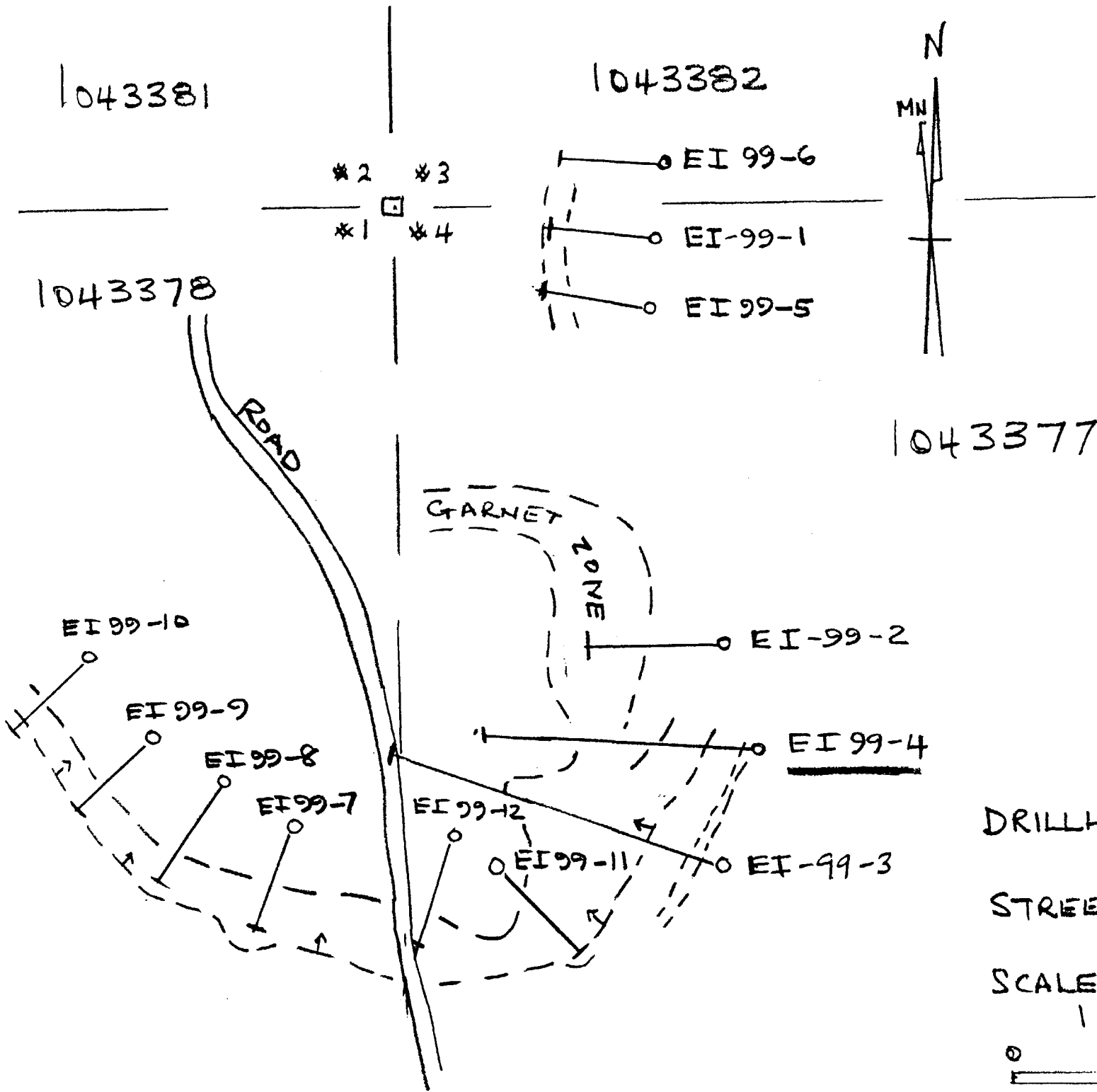
CLAIM No. 1043377

400 ft South, 270 ft east
of # 4 POST.

BEARING 275°.

DRILLER: RON FOU LIN (RONKOR)

PARBUN



PARB.

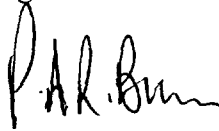
EIR 99-04

	FOOTAGE		TAIL.	CONS.	8
1	96	- 100	6 lb. 1 oz.	2 lb. 9 oz.	29.7
2	100	- 105	7 lb. 15 oz.	2 lb. 10 oz.	24.8
3	105	- 110	6 lb. 13 oz.	3 lb. 14 oz.	36.25
4	110	- 115	7 lb. 8 oz.	2 lb. 15 oz.	28.1
5	115	- 120	7 lb. 4 oz.	4 lb. 6 oz.	37.6
6	120	- 125	7 lb. 8 oz.	3 lb. 0 oz.	28.5
7	125	- 130	7 lb. 2 oz.	2 lb. 2 oz.	22.9
8	130	- 135	8 lb. 0 oz.	2 lb. 0 oz.	20.0
9	135	- 140	7 lb. 11 oz.	3 lb. 3 oz.	29.3
10	140	- 142	3 lb. 7 oz.	2 lb. 0 oz.	36.7
				average =	29.38%

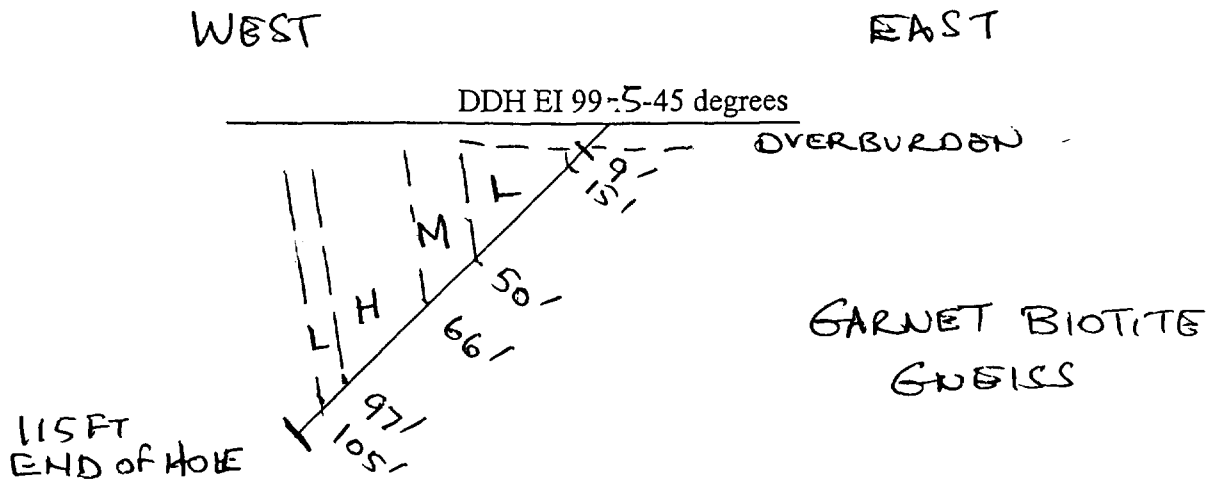
DDH EI-99-5

Location Street Twp Ont. 75 ft south and 190 ft east of #4 post
Claim no. 1043377
Dip: -45 deg
Core size BQ
Bearing: 285 deg
Core stored at Erana Mines, Fielding Road, Sudbury, Ont.
Date Hole Started: 17th August/99
Date Hole Completed: 17th August/99
Logging completed: August 26th/99
Core logged by P.A.R. Brown, Mining Geologist, BSc., A.R.S.M
Driller: ROKOR

0 to 9 ft Casing
9 to 15 ft Garnet biotite gneiss with low to zero garnet. 9 to 10 ft and
12 to 14 ft qtz veins
Dark phlogopite rich 0 to 52 ft
15 to 50 ft low % garnet
50 to 66 ft medium % garnet , up to 20%
52 ft on ,qtz rich gneiss with banding 50 deg and 80 deg to c/a
66 to 97 ft high % garnet, 30%
97 to 105 ft med % garnet
105 to 115 ft low to zero % garnet.
115 E.O.H



#	number	deg	degrees	qtz	quartz
%	percentage	c/a	core axis	med	medium
ft	feet	no.	number	E.O.H	end of hole



H = HIGH % GARNET
 M = MEDIUM % GARNET
 L = LOW % GARNET

SCALE 1 inch = 50 feet

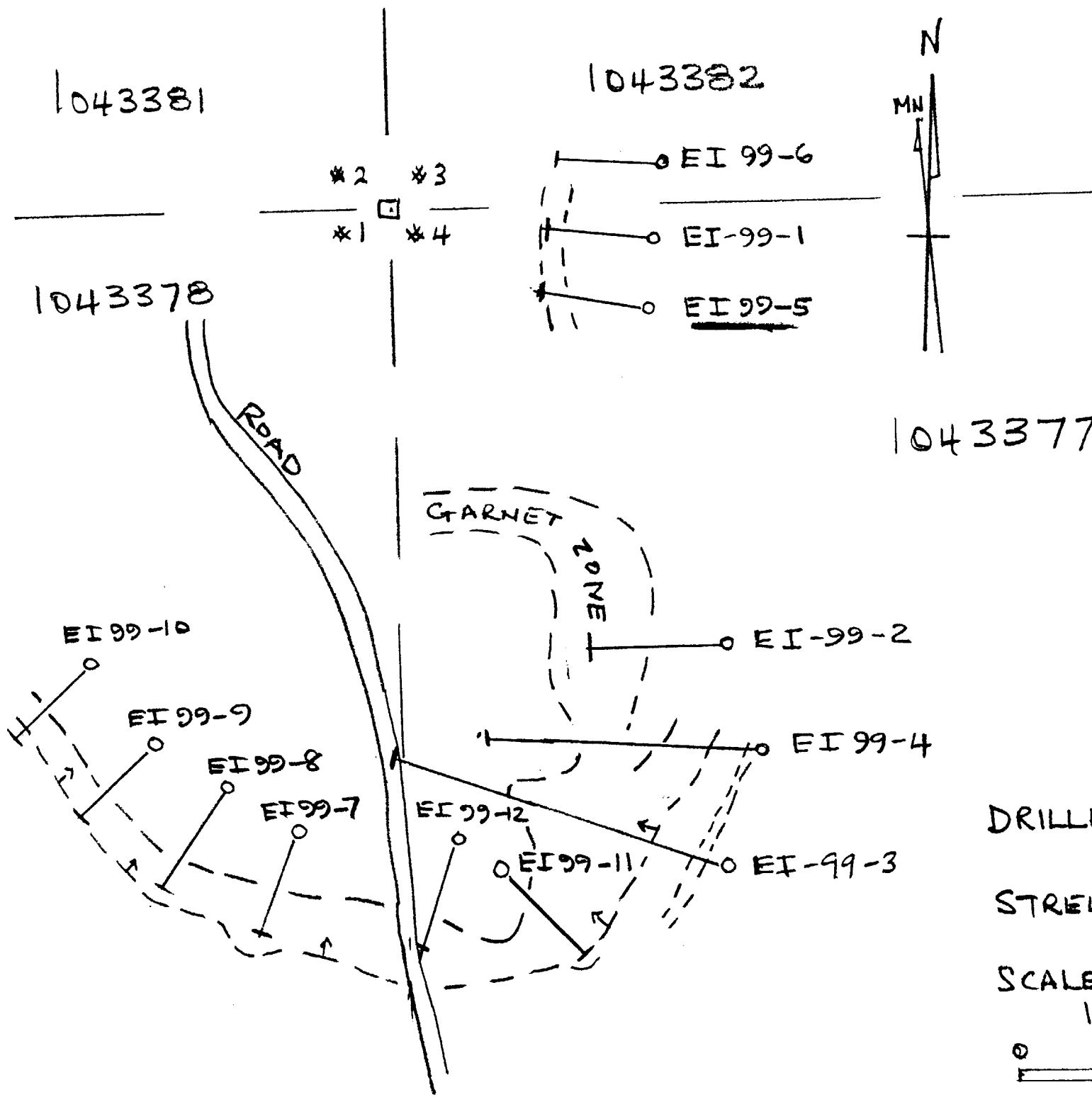


1:600

DDH - EI - 99 - 5
 STREET TWP ONT.
 CLAIM No. 1043377
 75 ft SOUTH, 190 ft EAST
 OF # 4 POST
 BEARING 285°.

DRILLER: RON POULIN (RONKOR)

PARB...



DRILLHOLE LOCATION
PLAN

STREET TWP, ONT

SCALE 1 INCH = 100 FT
1 : 1200

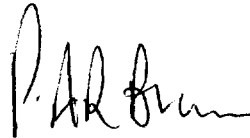


PARB.

DDH EI-99-6

Location: STREET TWP, Ont 22 ft east, 30 ft north of #3 post of
Claim no: 1043382
Dip: -45 degrees
Bearing: 280 degrees
Core size: BQ
Coe stored: at ERANA MINES, Fielding Road, Sudbury, Ont.
Date hole started: 17th August/99
Date hole completed: 19th August/99
Logging completed: August 26th/99
Core logged by P.A.R. Brown, Mining Geologist BSc., A.R.S.M
Driller: RONKOR

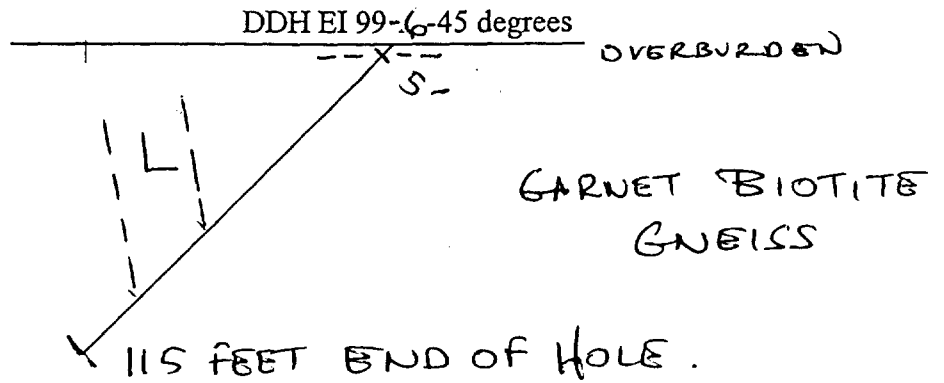
0 to 5ft	Casing
5 to 15ft	Qtz rich biotite gneiss, low % of garnet to zero garnet Phlogopite mica , banding 40 to 60 deg to c/a. Some patches of garnet. Did this hole miss the target?
15 to 65ft	Patchy low % garnet
65 to 110ft	Low to zero garnet. Best section 70 to 95 ft but this is low %
110 to 115ft	low %
115	E.O.H



ft	feet	#	number	no.	number
c/a	core axis	%	percentage	E.O.H	end of hole

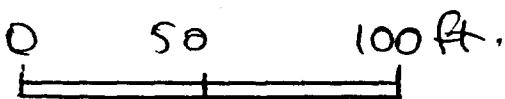
WEST

EAST



H = HIGH % GARNET
 M = MEDIUM % GARNET
 L = LOW % GARNET

SCALE 1 inch = 50 feet

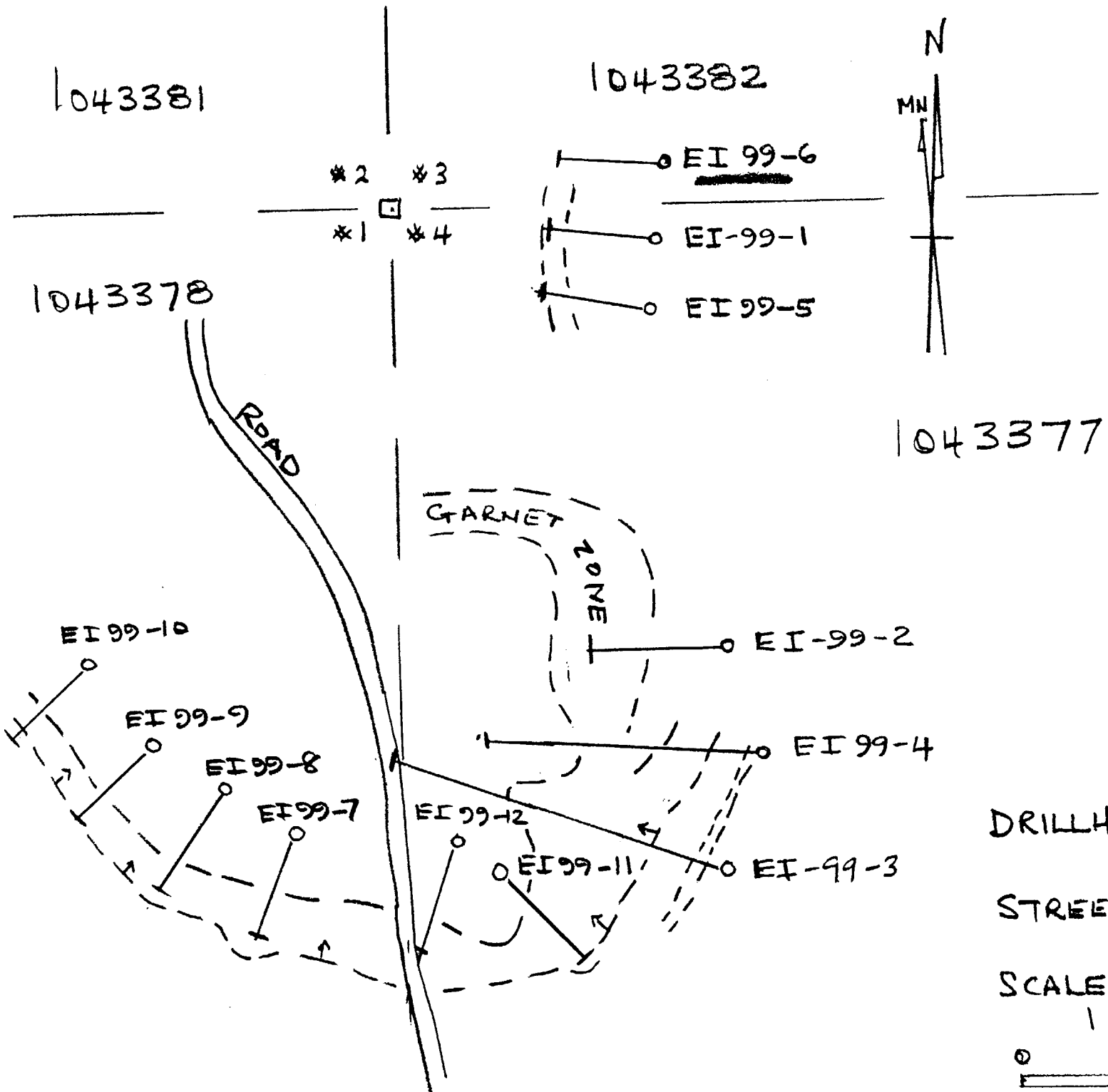


1:600

DDH - EI - 99 - 6
 STREET TWP ONT.
 CLAIM No. 1043382
 22ft EAST, 30ft NORTH
 OF #3 POST
 BEARING 280°.

DRILLER: ROM FOULIN

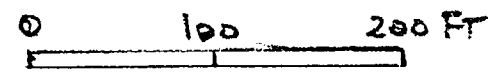
PARSON



DRILLHOLE LOCATION
PLAN

STREET TWP, ONT

SCALE 1 INCH = 100 FT
1 : 1200



PARB.

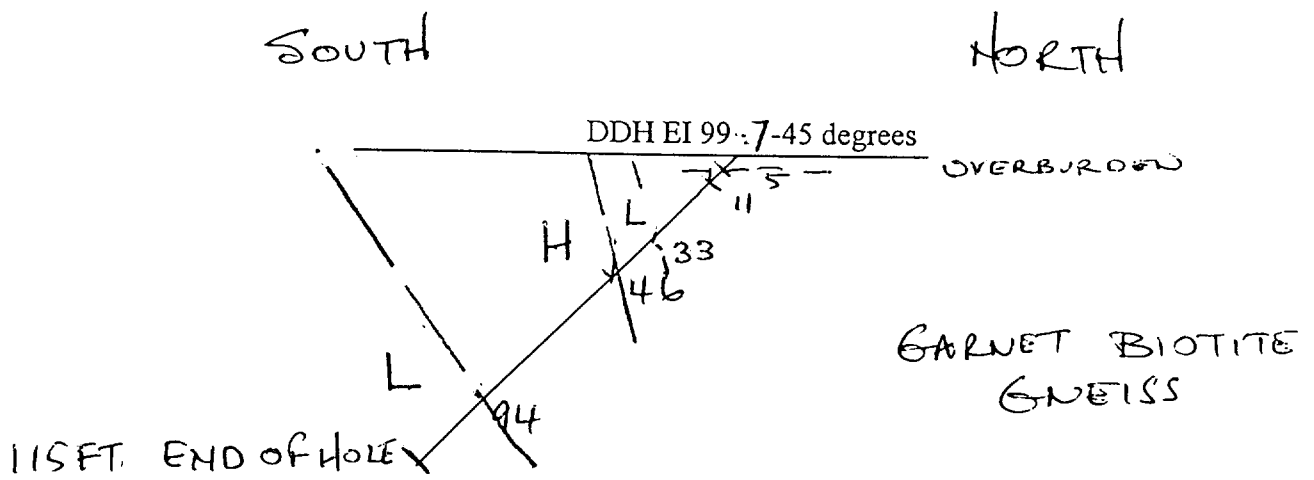
DDH EI-99-7

Location: STREET TWP, Ont. 435 ft south, 75 ft west of #1 post of
Claim no : 1043378
Dip: -45 degrees
Bearing: 200 degrees
Core size: BQ
Core stored at ERANA MINES, Fielding road, Sudbury, Ont.
Date hole started: 19th August/99
Date hole completed: 19th August/99
Logging completed: August 26th/99
Core logged by P.A.R. Brown, Mining Geologist, BSc., A.R.S.M
Driller: ROKOR

0 to 5ft	Casing
5 to 11ft	Medium to high % of garnet in biotite gneiss. Crystals to 1 inch
11 to 33ft	fine grained phlogopite gneiss with banding 40 deg to c/a and zero garnet.
33 to 46 ft	Low % garnet
46 to 94 ft	qtz rich with high % garnet
94 to 115ft	low % garnet. 111.5 to 113.5 qtz vein.
115ft	End Of Hole.

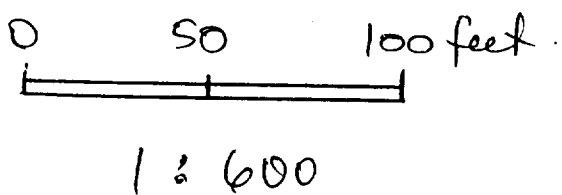


#	number		no.	number	deg	degrees
%	percentage	c/a	core	axis	ft	feet



H = HIGH % GARNET
 M = MEDIUM % GARNET
 L = LOW % GARNET.

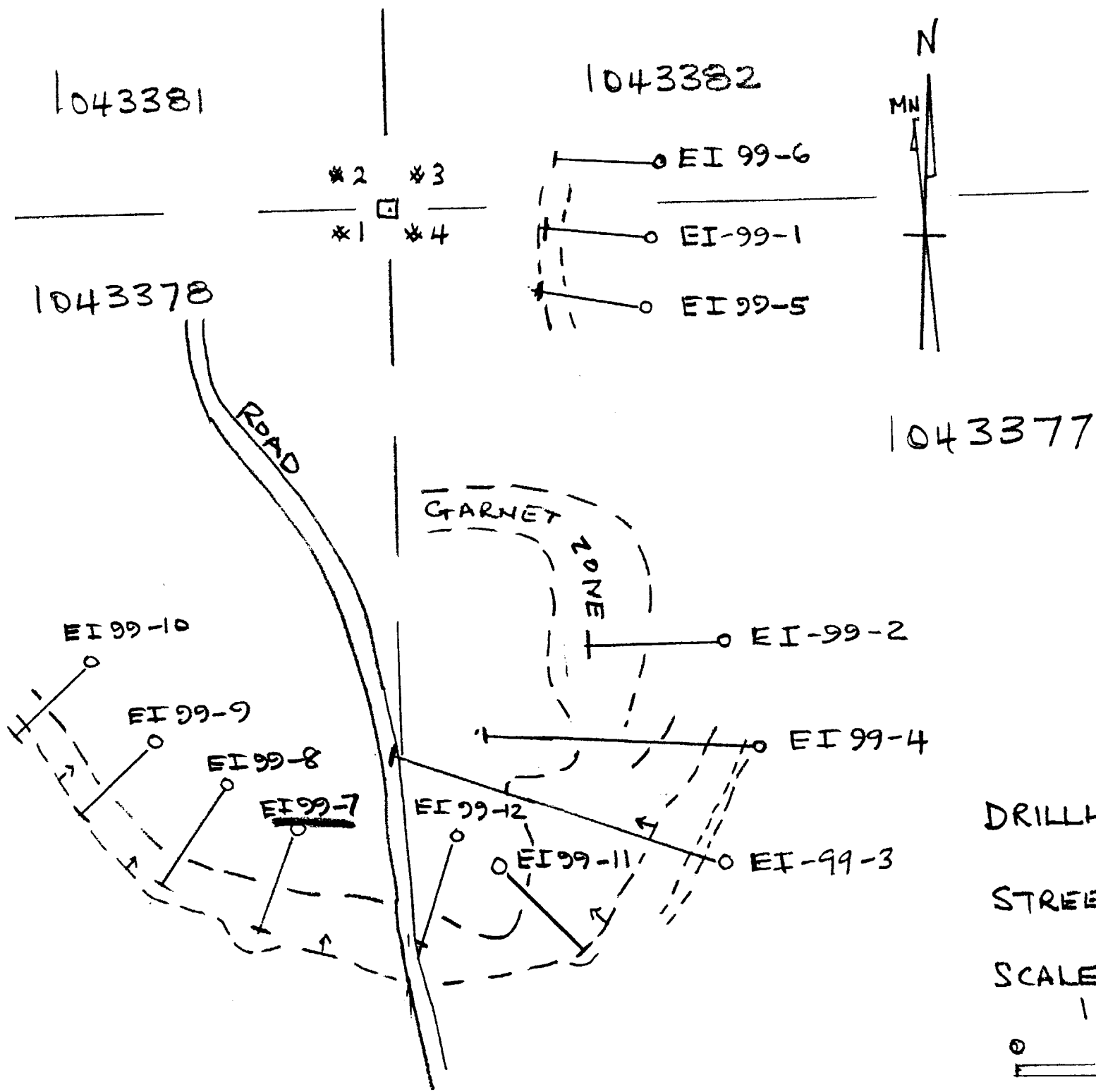
SCALE 1 inch = 50 feet



DDH - EI - 99 - 7
 STREET TWP ONT.
 CLAIM No. 1043378
 435 FT. SOUTH, 75 FT WEST
 OF #1 POST.
 BEARING 200°.

DRILLER: RON FOU LIN

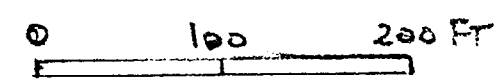
PH. Brown



DRILLHOLE LOCATION
PLAN

STREET TWP, ONT

SCALE 1 INCH = 100 FT
1 : 1200

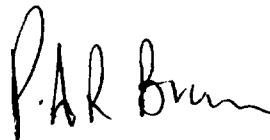


PARB.

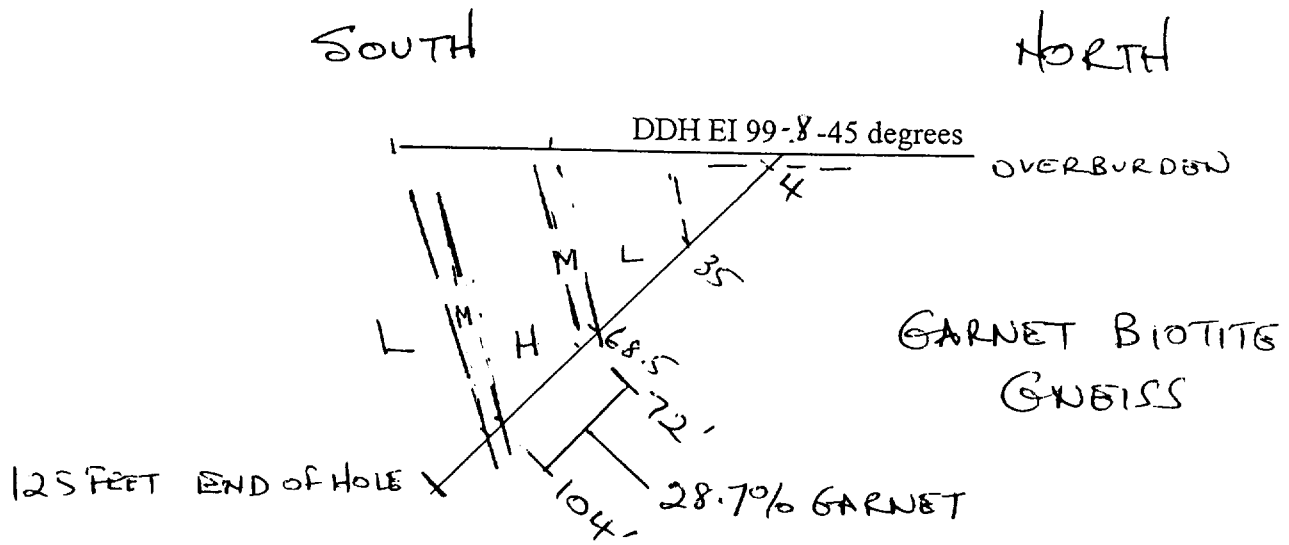
DDH EI-99-8

Location: STREET TWP, Ont. 420 ft south, 125 ft west of #1 post of
Claim no: 1043378
Dip: -45 degrees
Bearing: 215 degrees
Core size: BQ
Core stored at ERANA MINES, Fielding Road, Sudbury, Ont
Date hole started: 27th August/99
Date hole finished: 27th August/99
Logging completed: 2nd Sept/99
Core logged by P.A.R. Brown , Mining Geologist, BSc. A.R.S.M.
Driller: ROKOR

0 to 4 ft	Casing
4 to 18 ft	Qtz biotite gneiss with low to zero garnet content
18 to 35ft	a little increase in garnet but patchy.
35 to 54ft	low % garnet
54 to 56ft	qtz vein with pyrite specks
56 to 68.5	low % garnet and a qtz vein 61 to 61.5ft. Qtz felspar 67 to 68.5ft
68.5 to 74 ft	medium % garnet (15%)
74 to 102ft	high % garnet (25%)
102 to 107ft	medium % garnet
107 to 125ft	low % garnet with some pyrite and a qtz vein 123 to 123.5 ft.
125ft	End Of Hole. <1% py all through hole.



#	number	no.	number	qtz	quartz
%	percentage	<	less than	py	pyrite



H = HIGH % GARNET
 M = LOW % GARNET
 L = LOW % GARNET

SCALE 1 inch = 50 feet



1 : 600

DDH - EI - 99 - 8

STREET TWP ONT.

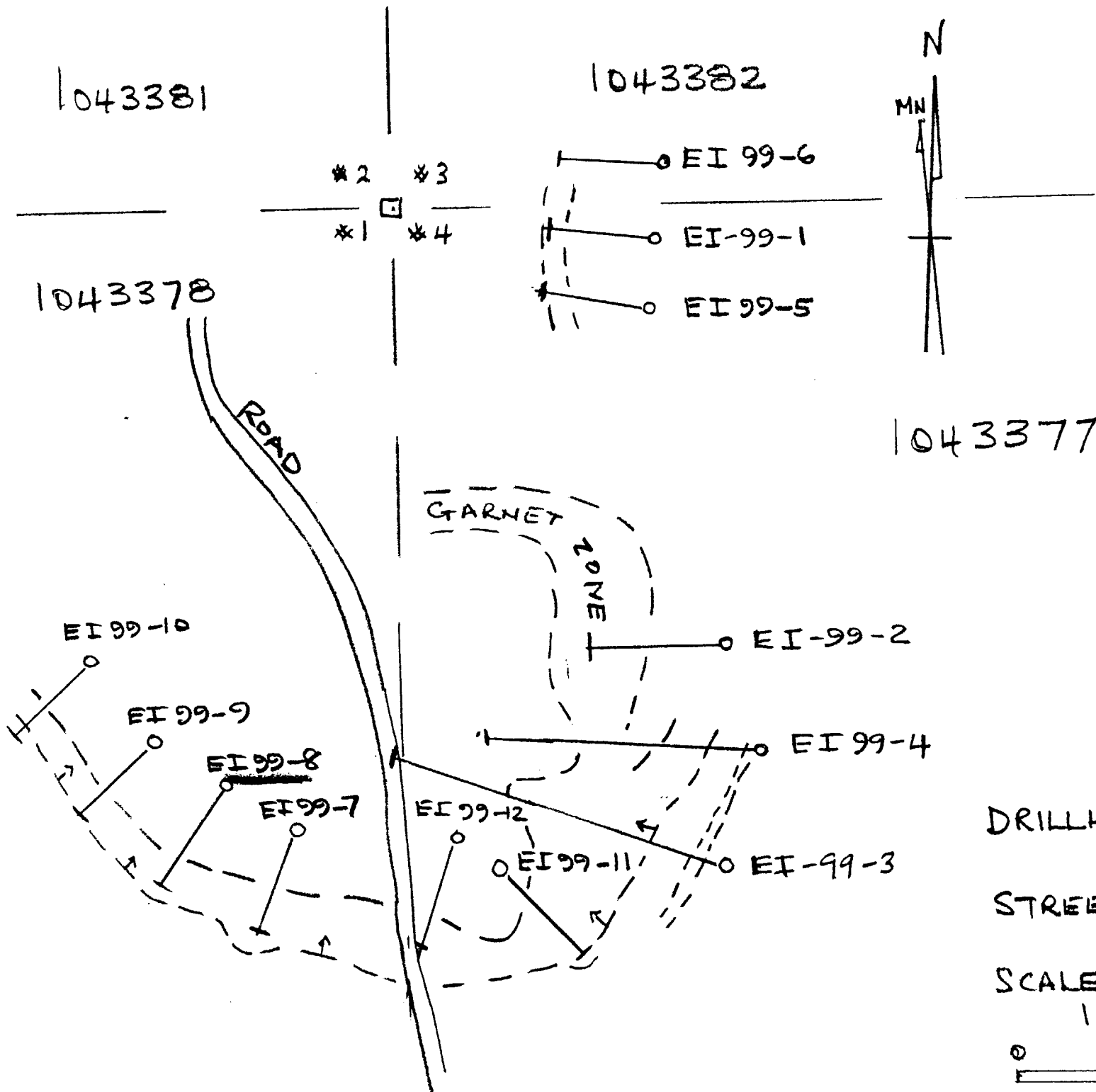
CLAIM No. 1043378

420 FT SOUTH, 125 FT WEST
 OF #1 POST.

BEARING 215°.

DRILLER: RON LOULIN

P. ARBMAN



PARB.

EIR 99-08

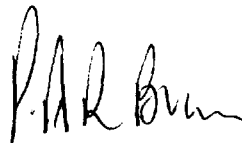
	FOOTAGE		TAIL.		CONS.		g
1	72	- 75	4 lb.	11 oz.	2 lb.	4 oz.	36.
2	75	- 80	7 lb.	4 oz.	2 lb.	5 oz.	24.8
3	80	- 85	7 lb.	15 oz.	2 lb.	11 oz.	25.2
4	85	- 90	7 lb.	14 oz.	2 lb.	10 oz.	27.6
5	90	- 95	5 lb.	11 oz.	2 lb.	4 oz.	28.34
6	95	- 100	6 lb.	5 oz.	2 lb.	12 oz.	30.
7	100	- 104	5 lb.	11 oz.	2 lb.	6 oz.	29.4

average = 28.7

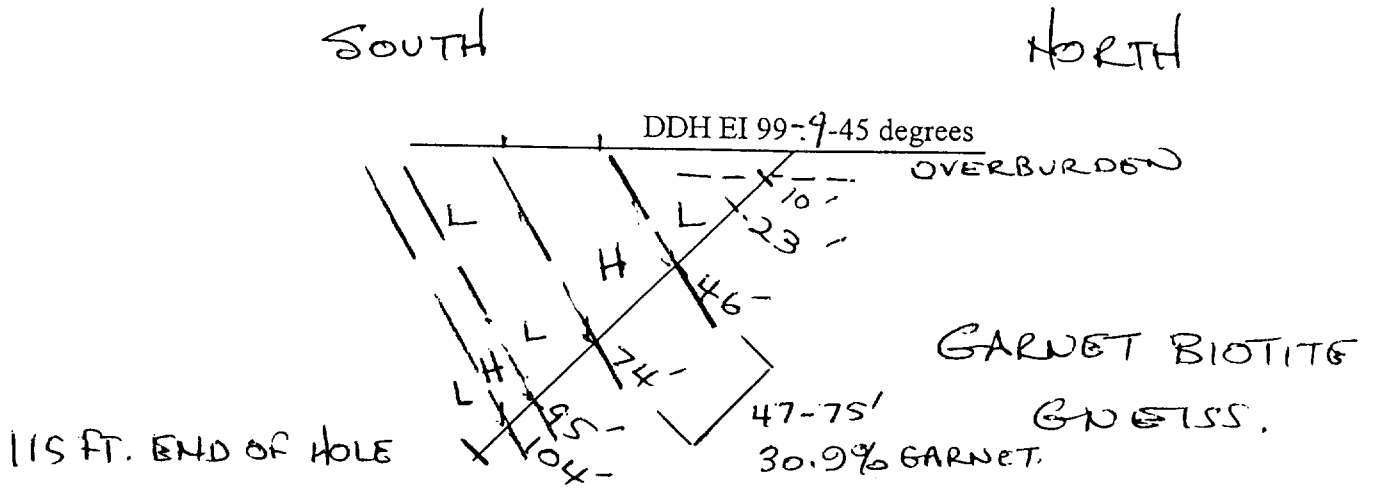
DDH EI-99-9

Location: STREET TWP, ONT 390ft south, 180ft west of #1 post of
Claim no: 1043378
Dip: -45 degrees
Bearing: 230 degrees
Core size: BQ
Core stored at ERANA MINES, Fielding Road, Sudbury, Ont.
Date hole started: 1st Sept/99
Date hole completed: 1st Sept/99
Logging completed: 2nd Sept/99
Core logged by P.A.R. Brown, Mining Geologist, BSc., A.R.S.M.
Driller: ROKOR

0 to 10 ft	Casing
10 to 46 ft	Qtz biotite gneiss with qtz veins 10 to 11ft, 14 to 14.5 ft and 17 to 18 ft. low % garnet from 23 to 46 ft.
46 to 74 ft	high % garnet, with phlogopite mica. Qtz vein 70 to 71.5 ft, and 45 deg to c/a
74 to 95 ft	very low % garnet, and granitic with coarse pyrite 90 to 95 ft
95 to 104 ft	high % garnet, with phlogopite mica and qtz vein 102 to 102.5ft
104 to 115 ft	low % garnet
115	End Of Hole



#	number	no.	number	ft	feet
qtz	quartz	%	percentage	c/a	core axis



H = HIGH % GARNET
 M = MEDIUM % GARNET
 L = LOW % GARNET.

SCALE 1 inch = 50 feet

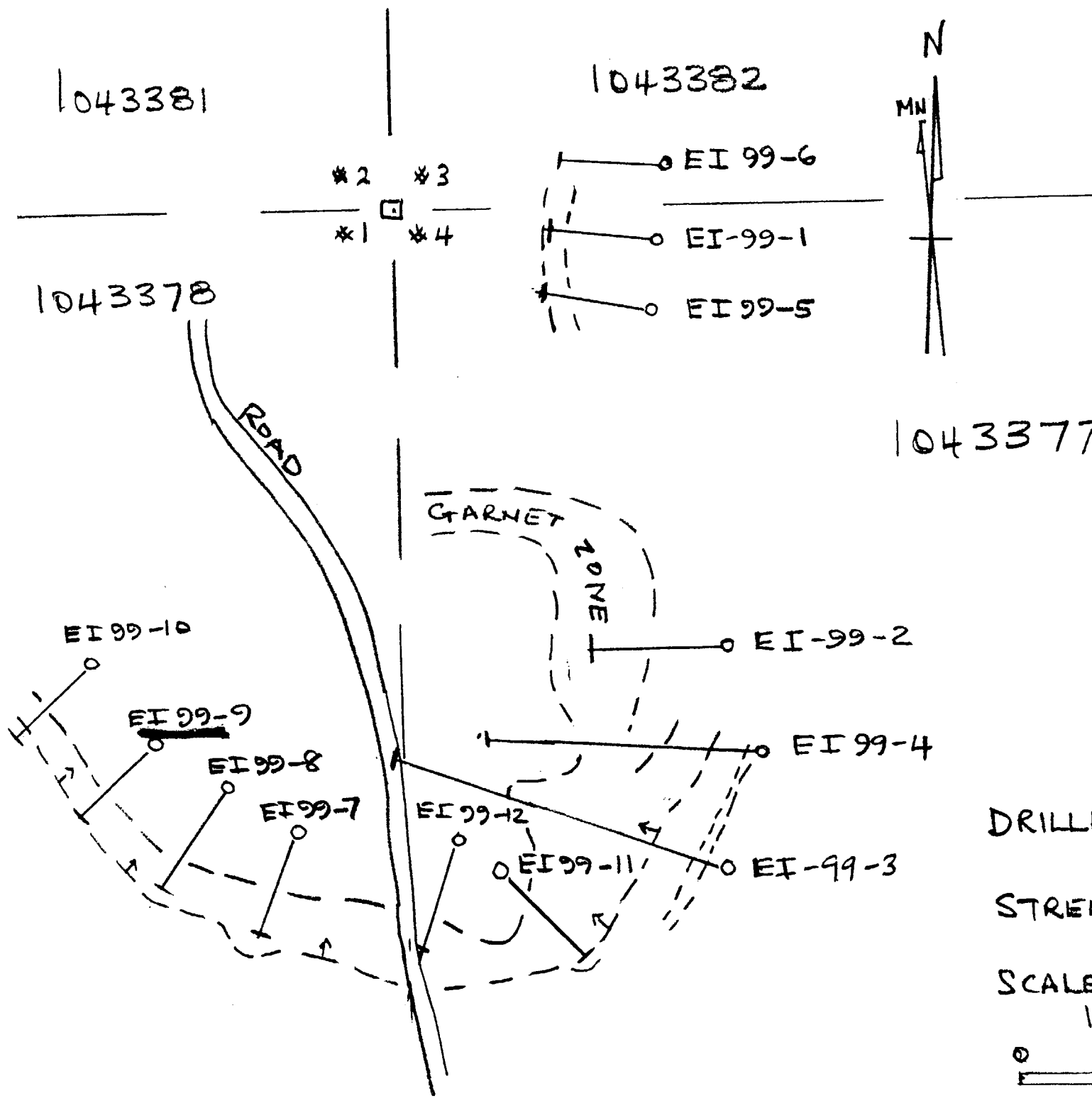


1 : 600

DDH - EI - 99 - 9
 STREET TWP ONT.
 CLAIM No. 1043378
 390 ft. SOUTH, 180 ft. WEST
 OF #1 POST.
 BEARING 230°.

DRILLER: RON FOU LIN (RONKOR)

R. F. Foulin



1043381

1043382

1043378

1043377

ROAD

GARNET ZONE

EI 99-10

EI 99-9

EI 99-8

EI 99-7

EI 99-12

EI 99-11

EI 99-6

EI-99-1

EI 99-5

EI-99-2

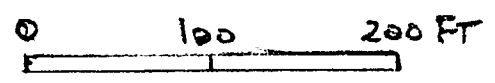
EI 99-4

EI-99-3

DRILLHOLE LOCATION PLAN

STREET TWP, ONT

SCALE 1 INCH = 100 FT
1:1200



PARB.


EIR 99-09

	FOOTAGE	TAIL.	CONS.	%
1	47 - 50	4 lb. 10 oz.	1 lb. 14 oz.	38.3
2	50 - 55	6 lb. 6 oz.	3 lb. 14 oz.	37.8
3	55 - 60	7 lb. 10 oz.	2 lb. 7 oz.	24.2
4	60 - 65	8 lb. 0 oz.	2 lb. 4 oz.	22.0
5	65 - 70	7 lb. 8 oz.	3 lb. 2 oz.	29.4
6	70 - 75	6 lb. 3 oz.	3 lb. 1 oz.	33.9
			average =	30.9

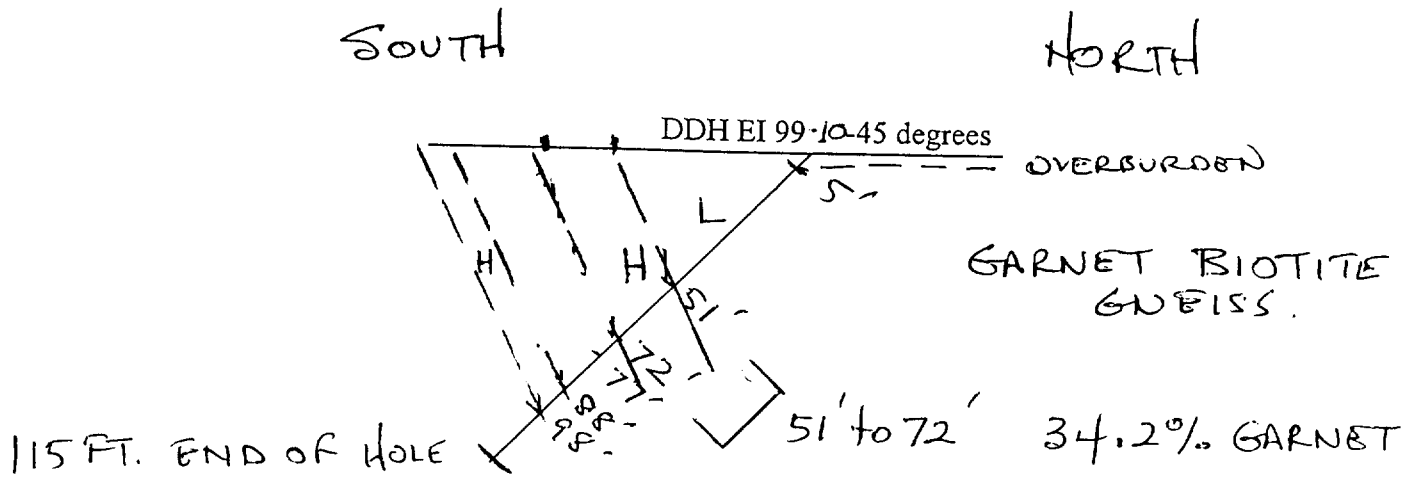
DDH EI-99-10

Location: STREET TWP, Ont. 330ft south, 230ft west of #1 post of
Claim no.: 1043378
Dip: -45 degrees
Bearing: 230 degrees
Core size: BQ
Core stored at ERANA MINES, Fielding Road, Sudbury, Ont.
Date hole started: 7th Sept/99
Date hole completed: 7th Sept/99
Logging completed: 29th Oct/99
Core logged by P.A.R.Brown, Mining Geologist, BSc. A.R.S.M.
Driller: ROKOR

0 to 5 ft	Casing
5 to 30.5ft	Garnet biotite gneiss, with < 10% garnet. Crystals 1/4in to 3/4in. Banding 45 deg. to c/a and up to 70 deg to c/a, also crenulated. pyrite usually less than 1/2%. Also minor cpy.
30.5 to 32.5ft	qtz vein with irregular contacts, some carbonate and py to 1/2%
32.5 to 43ft	more garnet but <10%.
43 to 51.5ft	qtz , felspar and biotite gneiss, also minor amphibole and 48 to 49ft up to 50% py with cpy.
51.5 to 71.5ft	> 30% garnet in crystals to 3/4in. and with phlogopite mica.
71.5 to 77ft	garnet biotite gneiss with massive garnet 75.5 to 76 ft. 15 to 20% average.
77 to 88 ft	low % garnet biotite gneiss
88 to 98 ft	high % garnet >30%. phlogopite 92 to 98 and biotite 88 to 92ft.
98 to 115ft	carb rich sedimentary gneiss with minor py and narrow qtz carb veinlets.
115 ft	End Of Hole

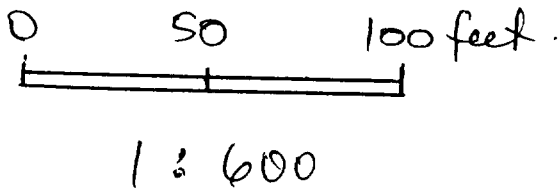


ft	feet	#	number	no.	number
<	less than	%	percentage	in	inch
deg	degrees	py	pyrite	cpy	chalcopyrite
>	more than				



H = HIGH % GARNET
 M = MEDIUM % GARNET
 L = LOW % GARNET.

SCALE 1 inch = 50 feet



DDH - EI - 99 - 10

STREET TWP ONT.

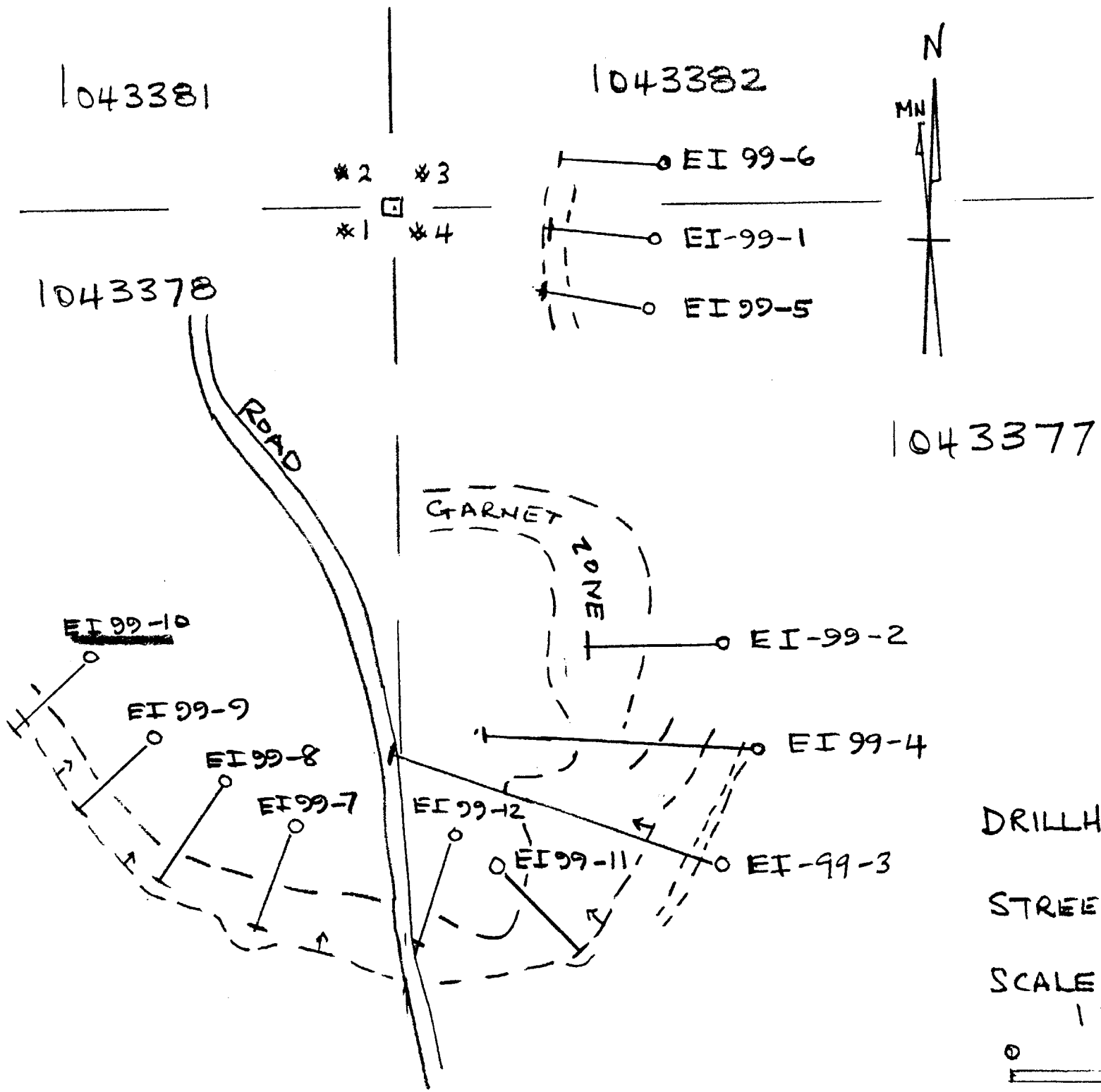
CLAIM No. 1043378

330ft SOUTH, 230ft WEST
 OF #1 POST.

BEARING 230°.

DRILLER: RON LOULIN

P. Ad Brum



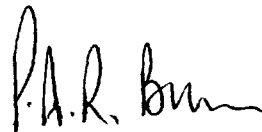
EIR 99-10

	FOOTAGE		TAIL.		CONS.		#
1	51	-	55	5 lb. 7 oz.	3 lb. 4 oz.		39.3
2	55	-	60	5 lb. 12 oz.	3 lb. 14 oz.		43.6
3	60	-	65	6 lb. 10 oz.	3 lb. 9 oz.		34.9
4	65	-	70	8 lb. 10 oz.	2 lb. 13 oz.		21.9
5	70	-	72	3 lb. 8 oz.	1 lb. 10 oz.		31.3
average = 34.28							

DDH EI-99-11

Location: STREET TWP, Ont. 485 ft south, 70 ft east of #4 post of
Claim no: 1043377
Dip: -45 degrees
Bearing: 135 degrees
Core size: BQ
Core stored at ERANA MINES, Fielding Road, Sudbury, Ont.
Date hole started: 9th Sept/99
Date hole finished: 9th Sept/99
Logging completed: 29th Oct/99
Core logged by P.A.R. Brown BSc. A.R.S.M.
Driller: ROKOR

0 to 15ft Casing
15 to 20ft Garnet quartz, biotite gneiss with banding 45 deg to c/a. Low to zero garnet (patchy)
16 to 20 ft low % garnet
20 to 41.5 ft medium % garnet
41.5 to 42.5ft qtz vein
42.5 to 76.5ft very high % garnet. >30% and light phlogopite mica.
54.5 to 55 ft a qtz vein
76.5 to 111ft high biotite low garnet % with some medium patches, 95 to 105
111 to 118.5ft high % garnet in garnet biotite gneiss
118.5 to 122ft medium % garnet
122 to 125ft low % garnet and banding 45 deg to c/a.
125ft End Of Hole

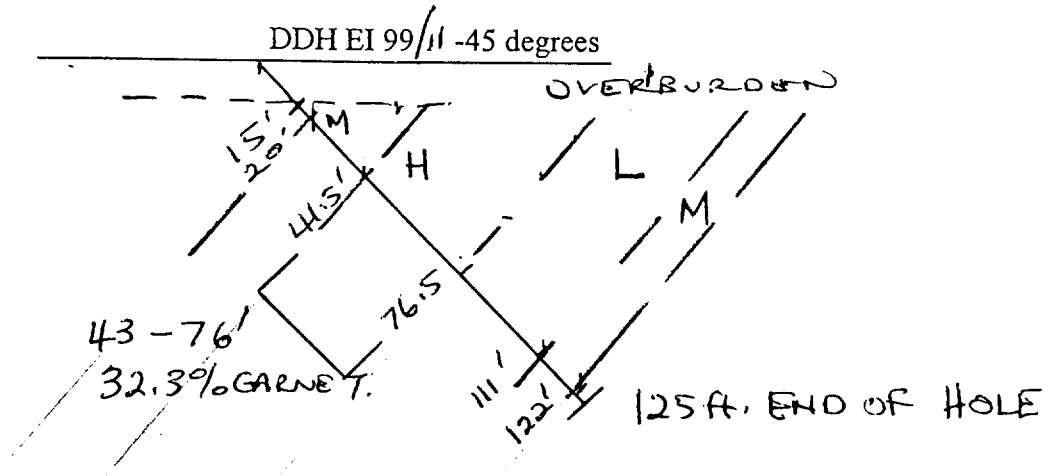


ft	feet	#	number	no.	number
deg	degrees	c/a	core axis	qtz	quartz
>	more than				

WEST

EAST

GARNET BIOTITE
GNEISS



H = HIGH % GARNET
 M = MEDIUM % GARNET
 L = LOW % GARNET

SCALE 1 inch = 50 feet



1:600

DDH - EI - 99 - 11

STREET TWP ONT.

CLAIM No. 1043377

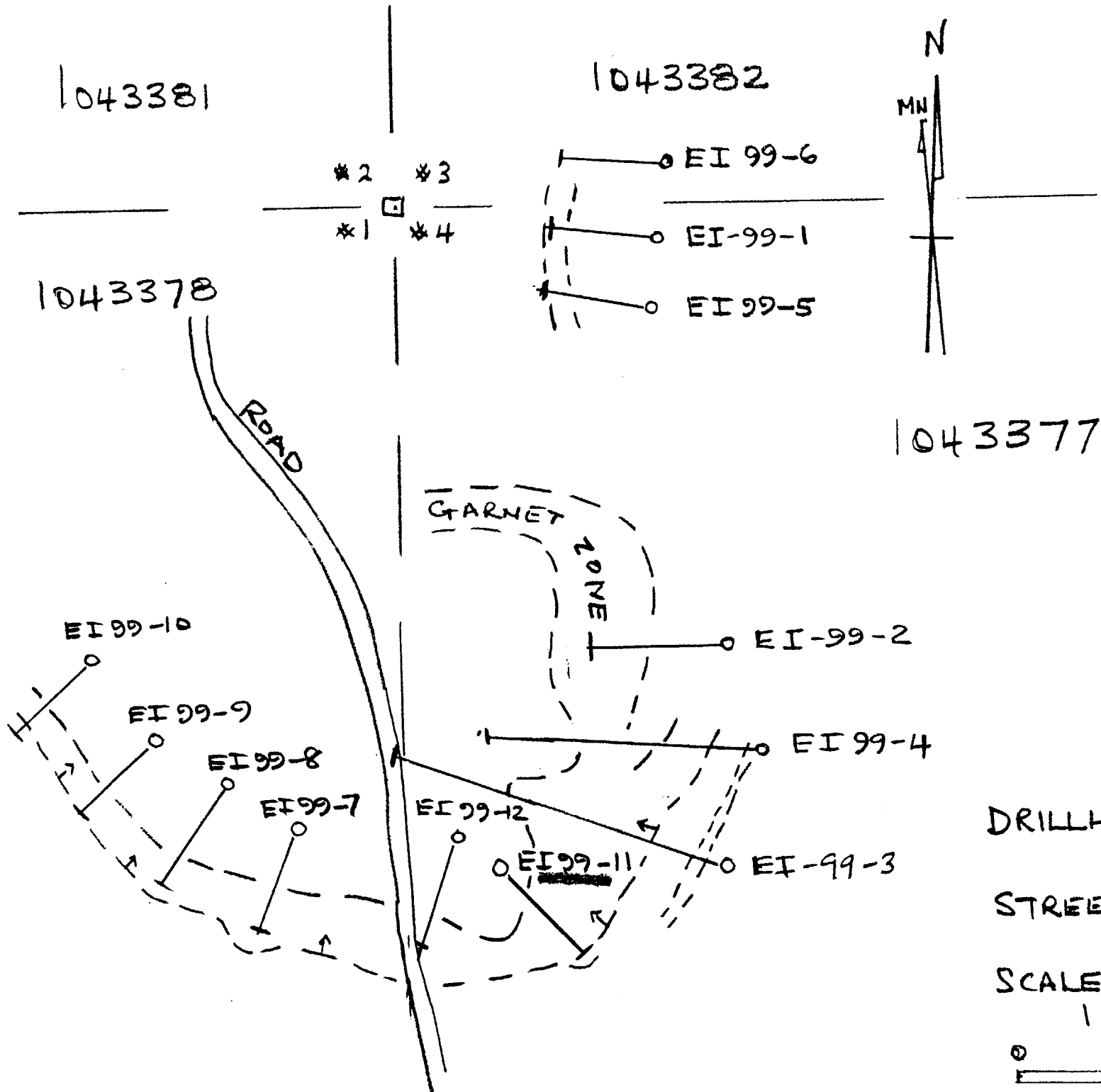
485 FT SOUTH, 70 FT EAST

OF #4 POST

BEARING 135°

DRILLER: RON LOULIN (RONKOR)

PARBUN



PARB.

EIR 99-11

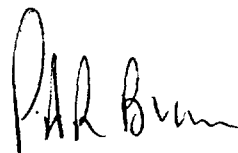
	FOOTAGE	TAIL.	CONS.	#
1	43 - 45	3 lb. 2 oz.	1 lb. 6 oz.	30.0
2	45 - 50	7 lb. 0 oz.	4 lb. 4 oz.	37.7
3	50 - 55	6 lb. 1 oz.	3 lb. 9 oz.	37.0
4	55 - 60	7 lb. 13 oz.	3 lb. 12 oz.	32.4
5	60 - 65	6 lb. 12 oz.	3 lb. 6 oz.	36.8
6	65 - 70	7 lb. 7 oz.	2 lb. 12 oz.	26.9
7	70 - 76	8 lb. 12 oz.	2 lb. 12 oz.	25.5

average = 32.38

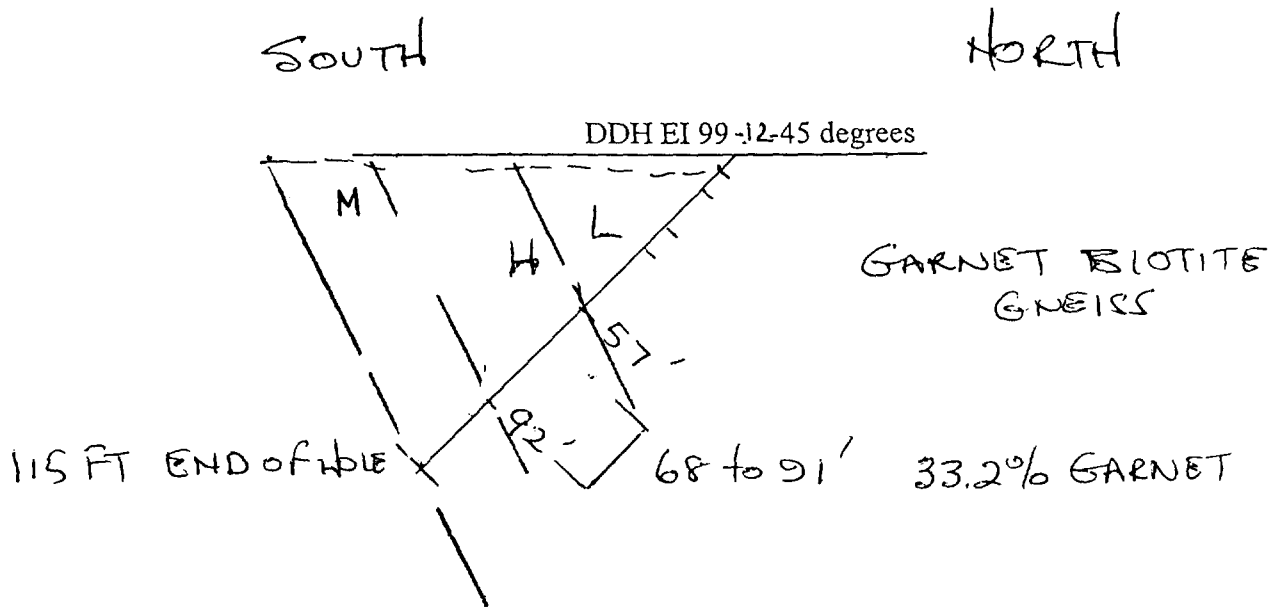
DDH EI-99-12

Location: STREET TWP, Ont. 465 ft south, 40 ft east of #4 post of
Claim no: 1043377
Dip: -45 degrees
Bearing: 200 degrees
Core size: BQ
Core stored at ERANA MINES, Fielding Road, Sudbury, Ont
Date hole started: 10th Sept/99
Date hole completed: 10th Sept/99
Logging completed: 29th Oct/99
Core logged by P.A.R. Brown BSc. A.R.S.M.
Driller: RONKOR

0 to 5 ft casing
5 to 13ft a void. No core.
13 to 15 ft medium grade with large garnets. Garnet biotite gneiss
15 to 26 ft garnet biotite gneiss, low % garnet
26 to 27.5 ft high % garnet
27.5 to 34 ft low to zero garnet
34 to 43 ft medium % garnet with 3/4 in crystals in biotite gneiss
43 to 49 ft low to zero % garnet
49 to 52 ft medium % garnet
52 to 57 ft low % garnet
57 to 92 ft > 30% garnet, high with phlogopite mica
92 to 94.5 ft low % garnet
94.5 to 96.5ft high % garnet. amphibolite with some cpy.
96.5 to 115 ft low to medium % garnet (10%) and the last inch is a qv.
115ft End Of Hole

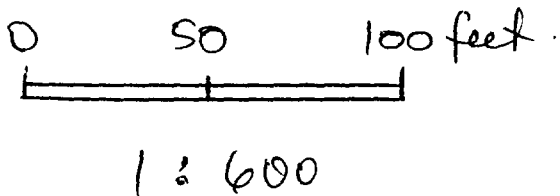


ft	feet	#	number	no.	number
%	percentage	>	more than	qv	quartz vein
cpy	chalcopyrite				



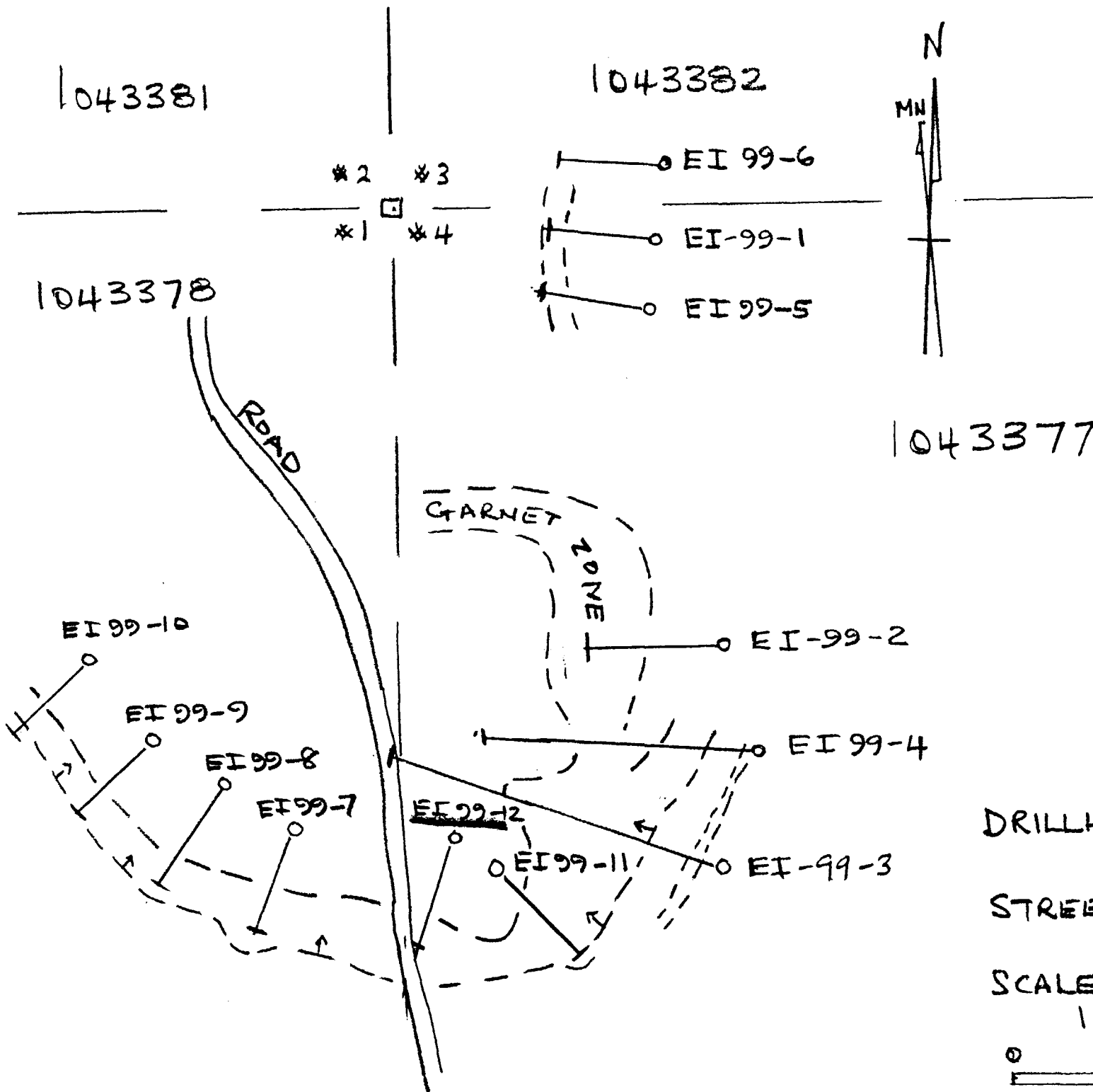
H = HIGH % GARNET
 M = MEDIUM % GARNET
 L = LOW % GARNET.

SCALE 1 inch = 50 feet



DDH - EI - 99 - 12
 STREET TWP ONT.
 CLAIM No. 1043377
 465' SOUTH, 40 FT EAST
 OF #4 POST.
 BEARING 200°.

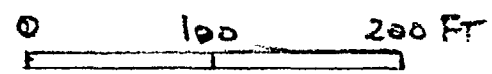
DRILLER: RON POULIN (RONKOR)



DRILLHOLE LOCATION
PLAN

STREET TWP, ONT

SCALE 1 INCH = 100 FT
1:1200



PARB.


EIR 99-12

	FOOTAGE	TAIL.	CONS.	%
1	68 - 75	10 lb. 4 oz.	4 lb. 4 oz.	29.8
2	75 - 80	5 lb. 10 oz.	4 lb. 10 oz.	48.
3	80 - 85	6 lb. 7 oz.	3 lb. 9 oz.	35.
4	85 - 91	10 lb. 4 oz.	2 lb. 10 oz.	20.
average =				33.2%

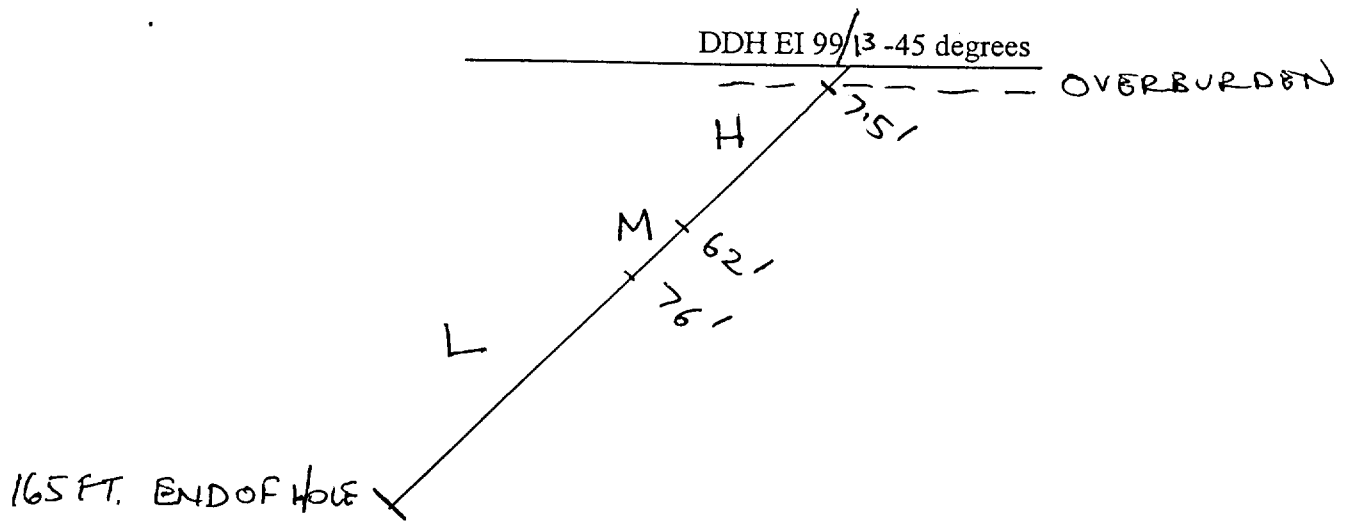
DDH EI-99-13

Location: STREET TWP, Ont
Claim no: 1043381
Dip: -45 deg
Bearing: 280 deg
Core size BQ
Core stored at ERANA MINES, Fielding road, Sudbury, Ont.
Date hole started: 13th Sept/99
Date hole completed: 13th Sept/99
Logging completed: 29th Oct/99
Core logged by P.A.R. Brown BSc. A.R.S.M.
Driller: ROKOR

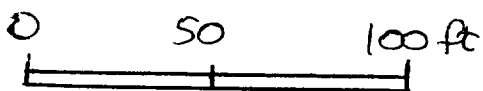
0 to 7.5 ft	Casing
7.5 to 11.0ft	Garnet biotite gneiss, high % garnet
11 to 31 ft	garnet biotite gneiss, large garnet crystals up to 2 inches and high %
31 to 62 ft	med to high % garnet
62 to 76 ft	medium to low % garnet
76 to 165 ft	low % garnet in biotite gneiss with many qtz sections. 146 to 147ft large garnet crystals and > 1% pyrite 156 to 156.3 qtz felspar section
165ft	End Of Hole



no.	number	no.	number	ft	feet
%	percentage	>	more than	qtz	quartz



SCALE 1 inch = 50 ft



1:600

DDH - EI - 99 - 13
 STREET TWP ONT.
 CLAIM NO.

BEARING

DRILLER: RON FOULIN

P. Albram

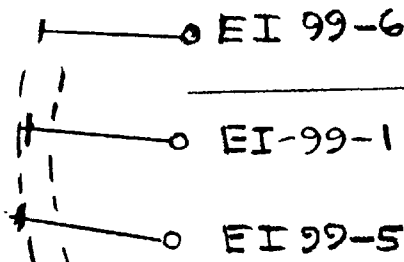
1043381

EI 99-13
- 600' north of #2 post
of 1043381 then
- 100' west

1043382



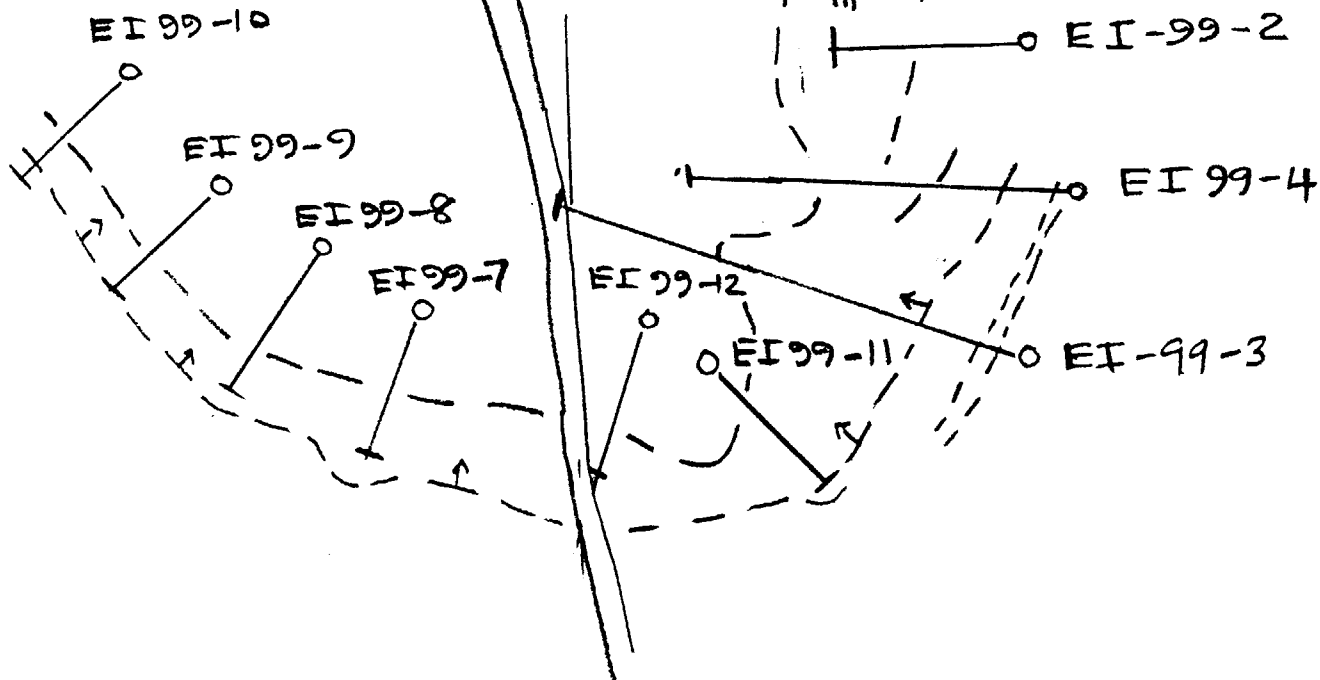
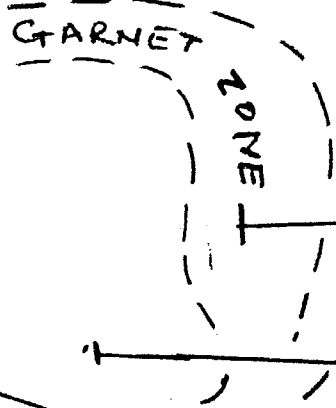
*2 *3
*1 *4



1043378

ROAD

1043377



DRILLHOLE LOCATION
PLAN

STREET TWP, ONT

SCALE 1 INCH = 100 FT
1 : 1200



PARB.



Declaration of Assessment Work Performed on Mining Land

Mining Act, Subsection 65(2) and 66(3), R.S.O. 1990

Transaction Number (office use)
W0070.00106
Assessment Files Research Imaging



Ministry of sub-sections 65(2) and 66(3) of the Mining Act. Under section 8 of the Act, you are required to review the assessment work and correspond with the mining land holder. Contact the Mining Recorder, Ministry of Northern Development and Mines, 6th Floor, 1000

41110SE2004 2.20346 STREET 900

Instructions: - For work performed on Crown Lands before recording a claim, use form 0240. - Please type or print in ink.

2.20346

1. Recorded holder(s) (Attach a list if necessary)

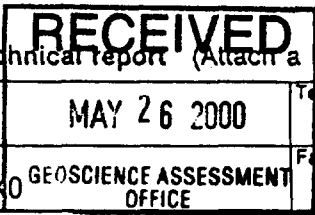
Name: ECOSOURCE GARNET INC.
Address: 106 Fielding Road
Lively, ON P3Y 1L5
Client Number: 301908 1043372
Telephone Number: (705)682-0649
Fax Number: (705)682-2447

2. Type of work performed: Check (✓) and report on only ONE of the following groups for this declaration.

- Geotechnical: prospecting, surveys, assays and work under section 18 (regs)
Physical: drilling, stripping, trenching and associated assays
Rehabilitation

Work Type: EXPLORATORY: Diamond Drilling (N.Q.)
Office Use:
Commodity:
Total \$ Value of Work Claimed: 36,609
Dates Work Performed: From 25/07/99 To 27/01/2000
Mining Division: Sudbury
Resident Geologist District: Sudbury

Please remember to: - obtain a work permit from the Ministry of Natural Resources as required; - provide proper notice to surface rights holders before starting work; - complete and attach a Statement of Costs, form 0212; - provide a map showing contiguous mining lands that are linked for assigning work; - include two copies of your technical report.



3. Person or companies who prepared the technical report (Attach a list if necessary)

Name: P.A.R. Brown
Address: R.R.#1, Corbeil, ON POH 1K0
Telephone Number: (705)752-1123
Fax Number: (705)752-1123

4. Certification by Recorded Holder or Agent

I, Joanne A. Funk-Agent, do hereby certify that I have personal knowledge of the facts set forth in this Declaration of Assessment Work having caused the work to be performed or witnessed the same during or after its completion and, to the best of my knowledge, the annexed report is true.

Signature of Recorded Holder or Agent: Joanne A. Funk-Agent
Agent's Address: 106 Fielding Road, Lively, ON P3Y 1L5
Telephone Number: (705)682-0649
Date: May 26, 2000
Fax Number: (705)682-2447

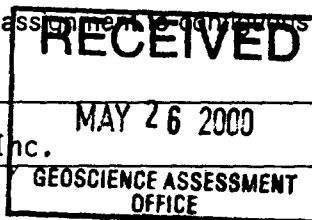
5. Work to be recorded and distributed. Work can only be assigned to claims that are contiguous (adjoining) to the mining land where work was performed, at the time work was performed. A map showing the contiguous link must accompany this form.

W0070.00106

Mining Claim Number. Or if work was done on other eligible mining land, show in this column the location number indicated on the claim map.	Number of Claim Units. For other mining land, list hectares.	Value of work performed on this claim or other mining land.	Value of work applied to this claim.	Value of work assigned to other mining claims.	Bank. Value of work to be distributed at a future date.
eg TB 7827	16 ha	\$26, 825	N/A	\$24,000	\$2,825
eg 1234567	12	0	\$24,000	0	0
eg 1234568	2	\$ 8, 892	\$ 4,000	0	\$4,892
1 1043377	1	19 713	0	19 504	209
2 1043378	1	11 264	0	11 264	0
3 1043381	1	2 816	0	2 816	
4 1043382	1	2 816	0	2 816	
5 1179595	6	0	2 400	0	
6 1179596	12	0	4 800		
7 1179597	16	0	25 600		
8 1197886	1	0	400		
9 1197887	1	0	400		
10 1197888	1	0	400		
11 1237212	1	0	1 200		
12 1237599	1	0	1 200	0	0
13					
14					
15					
Column Totals		36 609	36 400	36 400	209

I, Joanne A. Funk-Agent, do hereby certify that the above work credits are eligible under subsection 7 (1) of the Assessment Work Regulation 6/96 for assignment to eligible claims or for application to the claim where the work was done.

Signature of Recorded Holder or Agent Authorized in Writing
Joanne A. Funk Agent-EcoSource Garnet Inc.



Date
 May 26, 2000

6. Instructions for cutting back credits that are not approved.

Some of the credits claimed in this declaration may be cut back. Please check (✓) in the boxes below to show how you wish to prioritize the deletion of credits:

- 1. Credits are to be cut back from the Bank first, followed by option 2 or 3 or 4 as indicated.
- 2. Credits are to be cut back starting with the claims listed last, working backwards; or
- 3. Credits are to be cut back equally over all claims listed in this declaration; or
- 4. Credits are to be cut back as prioritized on the attached appendix or as follows (describe):

Note: If you have not indicated how your credits are to be deleted, credits will be cut back from the Bank first, followed by option number 2 if necessary.

For Office Use Only

Received Stamp	Deemed Approved Date	Date Notification Sent
	Date Approved	Total Value of Credit Approved
Approved for Recording by Mining Recorder (Signature)		

Personal information collected on this form is obtained under the authority of subsection 6(1) of the Assessment Work Regulation 6/96. Under section 8 of the Mining Act, the information is a public record. This information will be used to review the assessment work and correspond with the mining land holder. Questions about this collection should be directed to the Chief Mining Recorder, Ministry of Northern Development and Mines, 6th Floor, 933 Ramsey Lake Road, Sudbury, Ontario, P3E 6B5.

Work Type	Units of Work Depending on the type of work, list the number of hours/days worked, metres of drilling, kilometres of grid line, number of samples, etc.	2 203 46 Cost Per Unit of work	Total Cost
Exploratory: Diamond Drilling (N.Q.)	599.085 metres	58.86	35 261.
Associated Costs (e.g. supplies, mobilization and demobilization).			
Mobilization/Demobilization			1 134.
Transportation Costs			214.
Food and Lodging Costs			NIL
Total Value of Assessment Work			36 609.

RECEIVED
MAY 26 2000
GEOSCIENCE ASSESSMENT OFFICE

Calculations of Filing Discounts:

1. Work filed within two years of performance is claimed at 100% of the above Total Value of Assessment Work.
 2. If work is filed after two years and up to five years after performance, it can only be claimed at 50% of the Total Value of Assessment Work. If this situation applies to your claims, use the calculation below:
- TOTAL VALUE OF ASSESSMENT WORK × 0.50 = Total \$ value of worked claimed.

Note:

- Work older than 5 years is not eligible for credit.
- A recorded holder may be required to verify expenditures claimed in this statement of costs within 45 days of a request for verification and/or correction/clarification. If verification and/or correction/clarification is not made, the Minister may reject all or part of the assessment work submitted.

Certification verifying costs:

I, Joanne A. Funk (please print full name), do hereby certify, that the amounts shown are as accurate as may reasonably be determined and the costs were incurred while conducting assessment work on the lands indicated on the accompanying Declaration of Work form as Agent-EcoSource Garnet Inc. I am authorized (recorded holder, agent, or state company position with signing authority) to make this certification.

Signature <i>Joanne A. Funk</i>	Date May 26, 2000
------------------------------------	----------------------

Geoscience Assessment Office
933 Ramsey Lake Road
6th Floor
Sudbury, Ontario
P3E 6B5

Telephone: (888) 415-9845
Fax: (877) 670-1555

July 10, 2000

Joanne Funk
ECOSOURCE GARNET INC.
106 FIELDING ROAD
LIVELY, ON
P3Y-1L5

Visit our website at:
www.gov.on.ca/MNDM/MINES/LANDS/mlsmnpg.htm

Dear Sir or Madam:

Submission Number: 2.20346

Status

Subject: Transaction Number(s): W0070.00106 Approval

We have reviewed your Assessment Work submission with the above noted Transaction Number(s). The attached summary page(s) indicate the results of the review. **WE RECOMMEND YOU READ THIS SUMMARY FOR THE DETAILS PERTAINING TO YOUR ASSESSMENT WORK.**

If the status for a transaction is a 45 Day Notice, the summary will outline the reasons for the notice, and any steps you can take to remedy deficiencies. The 90-day deemed approval provision, subsection 6(7) of the Assessment Work Regulation, will no longer be in effect for assessment work which has received a 45 Day Notice. Allowable changes to your credit distribution can be made by contacting the Geoscience Assessment Office within this 45 Day period, otherwise assessment credit will be cut back and distributed as outlined in Section #6 of the Declaration of Assessment work form.

Please note any revisions must be submitted in DUPLICATE to the Geoscience Assessment Office, by the response date on the summary.

If you have any questions regarding this correspondence, please contact JIM MCAULEY by e-mail at james.mcauley@ndm.gov.on.ca or by telephone at (705) 670-5880.

Yours sincerely,



ORIGINAL SIGNED BY
Steve B. Beneteau
Acting Supervisor, Geoscience Assessment Office
Mining Lands Section

Work Report Assessment Results

Submission Number: 2.20346

Date Correspondence Sent: July 10, 2000

Assessor: JIM MCAULEY

Transaction Number	First Claim Number	Township(s) / Area(s)	Status	Approval Date
W0070.00106	1043377	STREET	Approval	June 30, 2000

Section:

16 Drilling PDRILL

Correspondence to:

Resident Geologist
Sudbury, ON

Assessment Files Library
Sudbury, ON

Recorded Holder(s) and/or Agent(s):

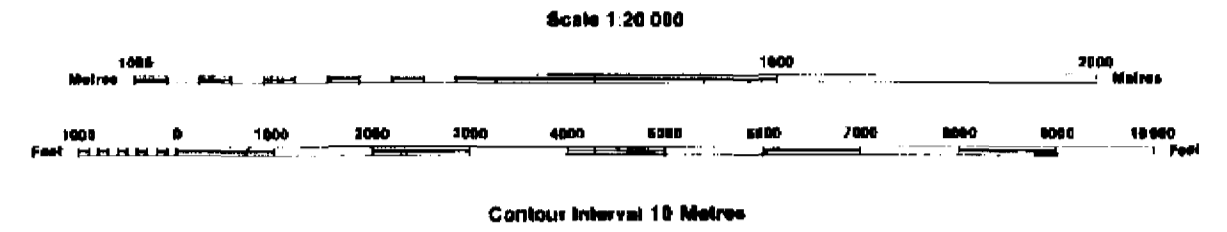
Joanne Funk
ECOSOURCE GARNET INC.
LIVELY, ON

INDEX TO LAND DISPOSITION

PLAN
G-4109
 TOWNSHIP

M.N.R. ADMINISTRATIVE DISTRICT
SUDBURY
 MINING DIVISION
SUDBURY
 LAND TITLES/REGISTRY DIVISION
SUDBURY

STREET



AREAS WITHDRAWN FROM DISPOSITION

M.R.O. - MINING RIGHTS ONLY
 S.R.O. - SURFACE RIGHTS ONLY
 M.+S. - MINING AND SURFACE RIGHTS

Description	Order No.	Date	Disposition	File
SEC 42/40		29/10/88	SRC	23022

SYMBOLS

Boundary	
Township, Meridian, Baseline	— — — — —
Road allowance; surveyed	— — — — —
shoreline	— — — — —
Lot/Concession; surveyed	— — — — —
unsurveyed	— — — — —
Parcel; surveyed	— — — — —
unsurveyed	— — — — —
Right-of-way; road	— — — — —
railway	— — — — —
utility	— — — — —
Reservation	— — — — —
Cliff, Pit, Pile	— — — — —
Contour	— — — — —
Interpolated	— — — — —
Approximate	— — — — —
Depression	— — — — —
Control point (horizontal)	— — — — —
Flooded land	— — — — —
Mine head frame	— — — — —
Pipeline (above ground)	— — — — —
Railway; single track	— — — — —
double track	— — — — —
abandoned	— — — — —
Road; highway, county, township	— — — — —
access	— — — — —
trail, bush	— — — — —
Shoreline (original)	— — — — —
Transmission line	— — — — —
Wooded area	— — — — —

NOTES

THE SUBDIVISION OF THE TOWNSHIP OF STREET AS LAID OUT INTO LOTS AND CONCESSIONS WAS ANNULLED IN 1925.

DISPOSITION OF CROWN LANDS

Patent	
Surface & Mining Rights	●
Surface Rights Only	○
Mining Rights Only	◐
Lease	
Surface & Mining Rights	■
Surface Rights Only	□
Mining Rights Only	◻
Licence of Occupation	▲
Order-in-Council	OC
Cancelled	⊗
Reservation	⊙
Sand & Gravel	⊕
LAND USE PERMIT	⊛

THE INFORMATION THAT APPEARS ON THIS MAP HAS BEEN COMPILED FROM VARIOUS SOURCES, AND ACCURACY IS NOT GUARANTEED. THOSE WISHING TO STAKE MINING CLAIMS SHOULD CONSULT WITH THE MINING RECORDER, MINISTRY OF NORTHERN DEVELOPMENT AND MINES, FOR ADDITIONAL INFORMATION ON THE STATUS OF THE LANDS SHOWN HEREON.

