

63.698



41110SW0045 0012A1 NEELON

010

Report on the Magnetometer Survey

on

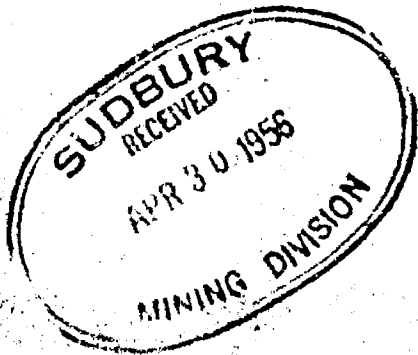
**Mineral Claims S-77789 to S-77795 inclusive
Neelon Township - Sudbury Mining Division
Province of Ontario**

for

ARCADIA NICKEL CORPORATION LIMITED

by

**Simard and Knight
Mining Consultants**



Toronto, Ontario

April 26, 1956.

Report on the Magnetometer Survey
ON
Mineral Claims 8-77789 to 8-77795 inclusive
Neelon Township - Sudbury Mining Division
Province of Ontario
for
ARCADIA NICKEL CORPORATION LIMITED

PROPERTY

The property consists of seven unpatented and unsurveyed mineral claims numbered 8-77789 to 8-77795 inclusive.

LOCATION

The property is situated in Neelon township, Sudbury Mining Division, Ontario. The claims occupy the following township subdivisions:

<u>Claim No.</u>	<u>Township Subdivisions</u>
8-77789	NE 1/4, N 1/2, Lot 2, Conc. III
8-77790	NW 1/4, N 1/2, Lot 1, Conc. III
8-77791	SW 1/4, S 1/2, Lot 1, Conc. IV
8-77792	SE 1/4, S 1/2, Lot 2, Conc. IV
8-77793	NE 1/4, S 1/2, Lot 2, Conc. IV
8-77794	SE 1/4, N 1/2, Lot 2, Conc. IV
8-77795	NE 1/4, N 1/2, Lot 2, Conc. IV

ACCESS

High No. 17 passes through the southwest quarter of claim 8-77789. Highway 17 is a paved road connecting North Bay and Sudbury, Ontario.

PHYSIOGRAPHY and TOPOGRAPHY

The major portion of the property is outcrop. The outcrops are all blackened by the fumes from the neighboring smelters. The topsoil present is confined to ravines and stream beds.

Relief is relatively low with occasional ridges reaching heights of fifty feet.

GEOLOGY

The property is underlain largely by Nipissing gabbro, with minor areas of Wanapitei quartzite.

Intruding the gabbro and quartzite rocks are numerous dikes of olivine diabase.

MINERALIZATION

Disseminated mineralization consisting of pyrrhotite and chalcopyrite was noted in trenches. Weak shears in the host gabbro intrusive seem to be the principal structural control of the mineralization.

A possible explanation of the mineralization is that the sulphides are probably from some facies of the gabbro magma and the segregations are localized along the shears within the gabbro. Because the mineralization was sparse, samples were not sent for assay.

RESULTS OF MAGNETOMETER SURVEY

Examination of the magnetometer survey plan reveals a linear sporadic arrangement of magnetic intensities of 2800 gammas and over.

The first arrangement of these magnetic intensities occurs along the northern margins of claims S-77789 and S-77790. Surface examinations reveal that the magnetic intensities are related to an olivine diabase dike.

The magnetic intensities caused by sulphide mineralization as observed from surface outcroppings are tabulated as follows:

1. Two magnetic intensities occurring along the common boundary of claims S-77791 and S-77792.
2. The magnetic intensities within claims S-77794 and S-77793.

CONCLUSIONS and RECOMMENDATIONS

The mineral occurrences are commonly described as "blowouts", suggesting that the sulphide originated from some facies of the gabbro magma.

These "blowouts" have no appreciable dimensions laterally or vertically and trenching usually delimits their extent.

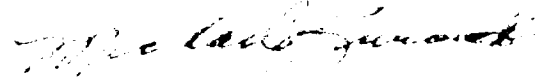
These mineral occurrences react positively to the magnetometer and examination of the results of the survey indicate quite conclusively their dimensions.

The magnetometer survey results in conjunction with a thorough geological reconnaissance of the property did not reveal any large potential sulphide body or any structural features, the latter of which would probably control the location of such a body. Furthermore, the mineral showings are typical of similar occurrences that are known along a belt of Nipissing gabbro extending from Cobalt to Sault Ste. Marie, Ontario.

From the results of the work performed on the property, it is considered unlikely that a commercial sulphide body is present on it and it is recommended that the property be abandoned.

Respectfully submitted,

SIMARD and KNIGHT



per Michael Zurowski

Toronto, Ontario
April 26, 1956

APPENDIX

Summary of Assessment Work

<u>Claim No.</u>	<u>Equiv. 8 hr. Man Days Magnetometer Survey</u>	<u>Total 8 hr. Man Day</u>
8-77789	28.5	28.5
8-77790	28.5	28.5
8-77791	28.5	28.5
8-77792	28.5	28.5
8-77793	28.5	28.5
8-77794	28.5	28.5
8-77795	28.5	28.5
Total	200.0	200.0

Technical Details of Assessment Work

The mileage picketed in order to complete the magnetometer survey is as follows:

Base Line	0.5
Picket lines	14.0
Total	14.5 miles

Magnetometer Survey

The magnetometer survey was carried out during November 1955. The survey was conducted using a Sharpe D1-M Magnetometer, whose scale constant is 26.1 gammas.

Interpretations of the magnetic results was done by use of magnetic contours plotted at 200 gamma intervals on a plan of one inch equals 200 feet.

Work Done By

Lincutting and Chaining

Romolus Picard - 21 Dufferin St., Sudbury, Ont.

Isabel Levesque - Hearst, Ontario

Period: November 18 to 29th, 1955, inclusive.

Magnetometer Survey (Field Work)

W. L. Ennis - 350 Wembley Dr., Sudbury, Ontario

Period: November 18th to 28th, 1955, inclusive.

Magnetometer Survey (Draughting, Reports, Calculations, etc.)

W. L. Ennis - 350 Wembley Dr., Sudbury, Ontario

Period: April 1 to 10, 1956 inclusive.

M. Zurowski - 403-25 Adelaide St. W., Toronto

Period: April 10 to 20th, 1956, inclusive

Appendix (Continued)

Breakdown

<u>Magnetometer Survey</u>	<u>8 Hr. Man Days</u>	<u>Factor</u>	<u>Total 8 Hr. Man Days</u>
Linecutting	20	4	80
Field Work (Survey)	10	4	40
Office Work	20	4	80
			<u>200</u>

On per claim basis - $\frac{200}{7} = 28.5$

April 26, 1956
Toronto, Ont.

Michael Zurowski

Michael Zurowski

GARSON TWP

Garson Jct.

Sudbury Jct.

City

N. R.

Coniston

C. P. R.

Romford Cr.

Ramsay Lake

Sudbury

Bobby Lake

Daisy Lake

THE TOWNSHIP OF
OF
NEELON

DISTRICT of SUDBURY
SUDBURY MINING
DIVISION

SCALE: 1 INCH TO 40 CHAINS

VI

V

IV

III

II

DRYDEN TWP

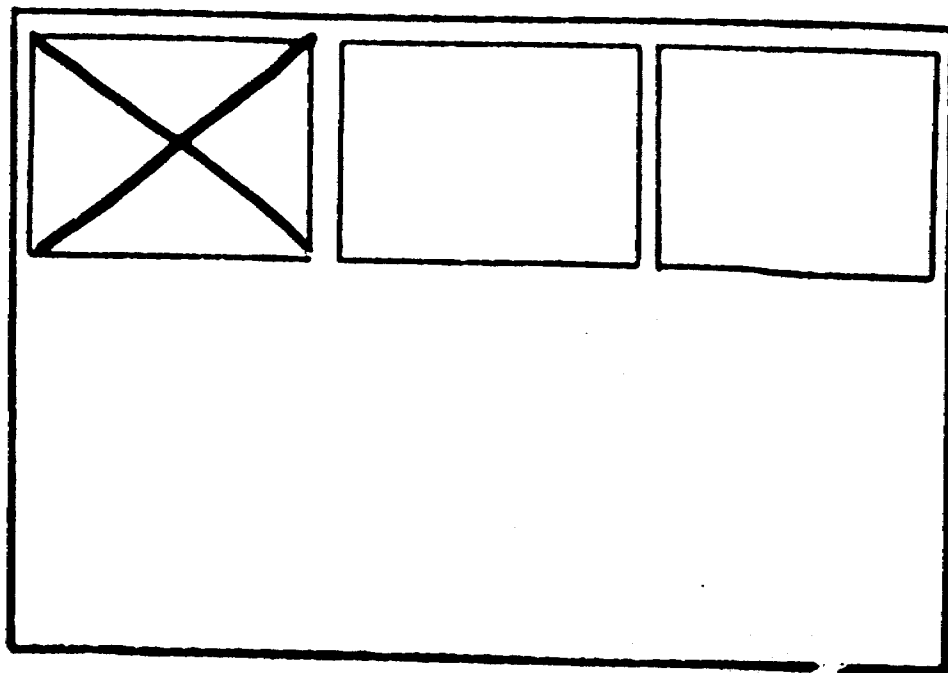
McKIM

12 11 10 9 8 7 6 5 4 3 2 1

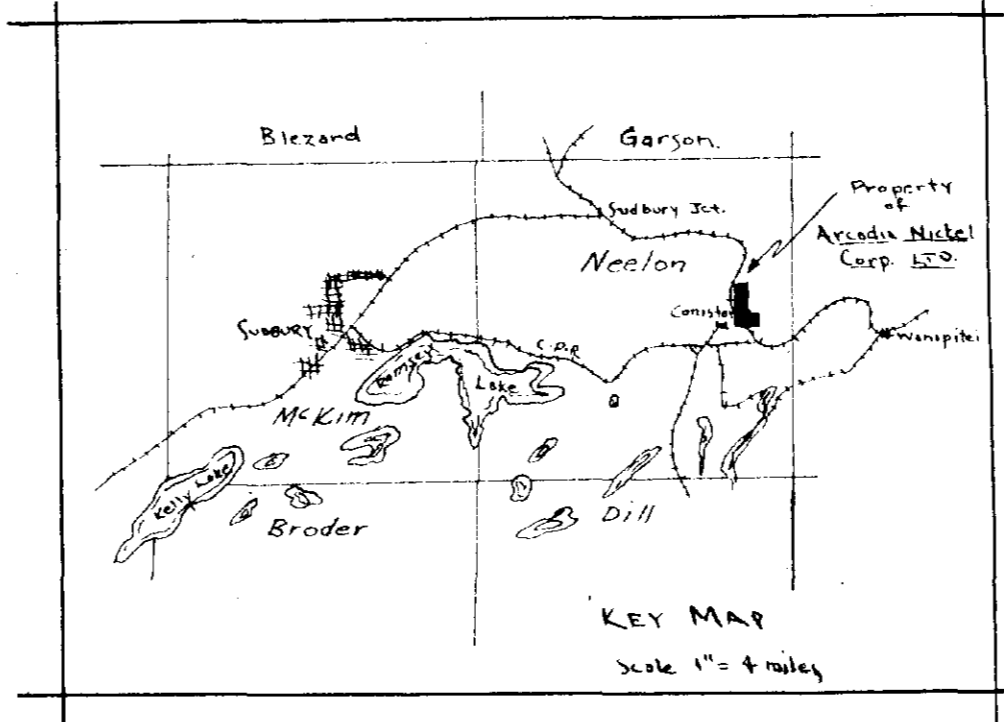
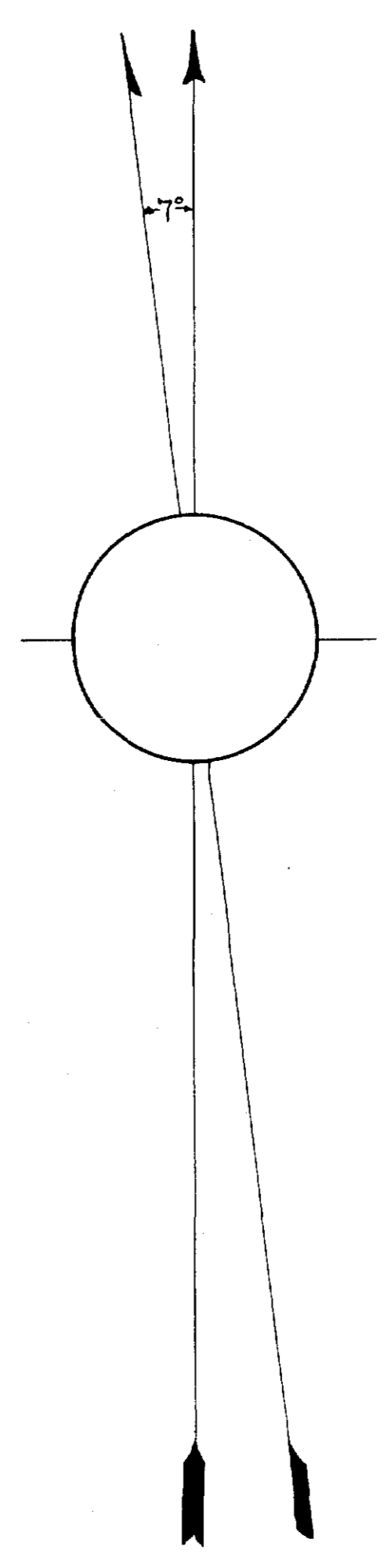
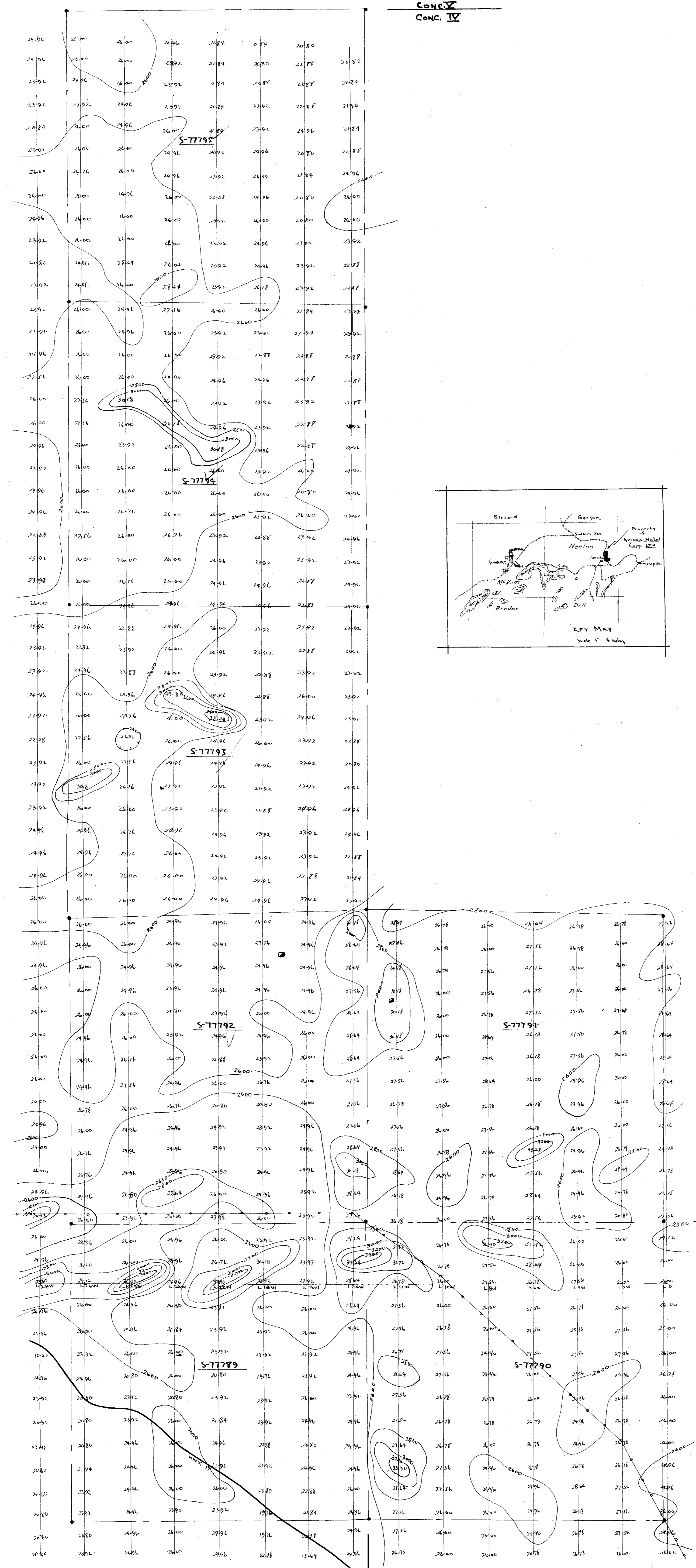
DILL TWP

SEE ACCOMPANYING
MAP(S) IDENTIFIED AS
NEELON-0012-A1 #1

LOCATED IN THE MAP
CHANNEL IN THE FOLLOWING
SEQUENCE (X)



CONC. V
CONC. IV



LEGEND

- - OVER 3400 GAMMAS
- - 3200 - 3400 "
- - 3000 - 3200 "
- - 2800 - 3000 "
- - 2600 - 2800 "
- - UNDER 2600 "

SYMBOLS

- ~2600 - Magnetic contour
- - - Dicket line
- + - Township Subdivision
- o - o - Telephone line
- - - Road
- o - TRENCH

63 698

CONC. IV
CONC. III

Lot 2. Lot 1.

ARCADIA NICKEL CORPORATION LTD.
NEELON TOWNSHIP - SUDBURY MINING DIVISION - ONTARIO

MAGNETOMETER SURVEY
(CLAIMS S-77789 - S-77795 INCLUSIVE)

Scale - 1 inch = 200 FT.

