

MORGAN-0013-B1

LOAD: Combo.

Property Morgan Township Claim 60388 Location 150' S. of N. boundary.
400' W. of E. boundary.

Hole No. 10643 Depth 187.0 Dip 30° Direction N. Elev. -

Depth ft.	Description
0.0	Collar.
8.0	Casing.
187.0	Tuff, dark grey, massive, common small inclusions, rare pencil stringers of carbonate 5° and 80°, scattered small specks of pyrrhotite, pyrite.
187.0	End of Hole.

Hole started. - August 19, 1953.
 Hole completed. - August 19, 1953.

Drilled by Smith and Travers.

Property Morgan Township, Claim 60388 Location 250' S. of N. boundary.
600' W. of E. boundary.

Hole No. 10672 Depth 855.0 Angle 75° Strike N. Elev. .

Depth ft.	Description
0.0	Collar.
5.0	Casing.
417.0	Tuff, dark grey matrix, medium massive to massive, numerous tiny specks of bluish grey to grey salic, material throughout matrix also tiny flecks of greenish mafics, inclusions are moderately common, ranging in size from a maximum of $\frac{1}{2}$ " down to very small units, predominantly angular, types apparent (1) shard type of inclusion. (2) bluish grey salic type (3) dull grey quartzite (4) dark mauvish grey to black slate inclusions, scattered spots sulphides, pyrrhotite, pyrite.
480.0	Tuff, dark grey matrix, medium massive to blocky, numerous $\frac{1}{2}$ " to $1\frac{1}{2}$ " inclusions locally constitute 30% of rock, rare sulphides pyrrhotite.
500;0	Tuff, (explosion breccia), black matrix, very numerous inclusions $\frac{1}{2}$ " to $1\frac{1}{2}$ " in places constitute 80% of rock, numerous smaller inclusions in a matrix of swirly dark grey to black material, sulphides very rare.
612.0	Tuff as to 460.0
767.0	Tuff, light grey, massive, common tabular dark green to black femics, scattered inclusions, most common is a shard type of inclusion, few blue grey salic and dull grey quartzite inclusions gradational from tuff as to 612.0
841.5	Tuff, greenish grey, altered, common small shard inclusions, and grey to bluish grey, salic inclusions, gradational through dark grey to black tuff into a light grey quartzite.
855.0	Quartzite, light grey, medium grained, vague foliation 35° - 45° , massive.
855.0	End of hole.

No 219

Hole started - June 10, 1953.
 Hole completed - June 26, 1953.

Drilled by Smith and Travers.

DIAMOND DRILL LOG

Sheet No.

Property Morgan Township, Claim 60388 Location 800' W. of E. boundary.
300' S. of N. boundary.

Hole No. 10679 Depth 673.0 Dip 41° Strike N Elev. -

Depth Ft.	Formation
0.0	Collar.
9.0	Casing
36.5	Tuff, dark grey, massive, small inclusions common, sulphide 2% to 5% pyrrhotite, pyrite, rare chalcopyrite and sphalerite.
60.0	Tuff, light grey, quartz-carbonate stringers, 2% to 3% sulphide pyrrhotite, pyrite.
400.0	Tuff, as to 36.5
400.0	Hole crosses claim boundary remaining footage to 673.0' is in Claim 60393.

Hole started - August 10, 1953.
 Hole completed - August 15, 1953.

Drilled by Smith and Travers.

Property Morgan Township Claim 60389 Location 50' W. of E. boundary.
400' S. of N. boundary.

Drill No. 10677 Depth 597;0' Dip 45° Direction N. Day -

- | Depth | Description |
|-------|--|
| 0.0 | Collar. |
| 8.0 | Casing. |
| 286.5 | Tuff, medium grey, massive, scattered dark green femics, inclusions moderately common, small rarely $\frac{1}{4}$ " to $\frac{1}{2}$ ", types apparent; bluish grey salic, dull grey to slightly yellow quartzites, rare pink feldspathic, occasional shard inclusion, common fine grained greenish chert like and black slate inclusions, scattered spots, sulphides pyrrhotite, rare pyrite. |
| 346.5 | Tuff, salic facies, light grey to light greenish grey, weak alignments locally at 45° , common bluish grey to white salic units and over local sections numerous brownish grey shards, rare dull grey quartzite inclusions. |
| 397.0 | Tuff, medium blue grey, massive, scattered inclusions, occasional 1" to 2" quartzite inclusion, more frequent small light blue grey salic units throughout, scattered spots pyrrhotite, rare specks chalcopyrite. |
| 597.0 | Tuff, medium grey, blocky to medium massive, locally very numerous small shard inclusions constitute 80% of rock, other inclusions as to previous entries, scattered specks of pyrrhotite. |
| 597.0 | End of Hole. |

Hole Started - July 20, 1953.
 Hole Completed. - July 25, 1953.

Drilled by Smith and Travers.

Property Morgan Township Claim 60393 Location 600' W. of E. boundary
150' N. of S. boundary.
 Hole No. 10671 Depth 2205.0 Angle 90° Strike _____ Elev. _____

Depth ft.	Description
0.0	Collar.
5.0	Casing.
266.5	Tuff, black, massive, no apparent alignment, matrix black with common minute specks of bluish grey salic material throughout, inclusions scattered not too common and variable in size from a maximum of $\frac{1}{2}$ " to 1" down to very small units, types of inclusions; (1) grey quartz carbonate, (2) greenish grey quartzites, (3) light blue grey salic inclusions, (4) brownish grey chert-like inclusions (5) rare black slate inclusions, variable sulphides 5-40% pyrrhotite, pyrite, occasional chalcopryrite, zinc sulphide, rare lead sulphide, occasional small stringer pyrrhotite, pyrite, chalcopryrite, zinc sulphide, at various angles to core.
391.0	Tuff, dark bluish grey, mass, no alignment, numerous inclusions predominantly angular, maximum 2" but variable sizes down to very small units, 2-5% locally heavily mineralized - pyrrhotite, pyrite, moderately common specks zinc sulphide, occasional chalcopryrite, occasional stringer pyrrhotite, pyrite chalcopryrite, zinc sulphide.
539.0	Tuff, light grey, massive, matrix material light grey salic with common grey black femics some of which have a tabular to elongate habit, inclusions not common. Scattered spots sulphides pyrrhotite, occasional pyrite, rare chalcopryrite, zinc sulphide.
635.0	Tuff light grey, massive, alignment vague at 40°, grey black femics common, inclusions not common, scattered small specks sulphides.
749.0	Tuff, grey, femics not so common, texture indistinct, inclusions not common, scattered spots sulphides.
765.1	Tuff, light grey, silicified and altered, numerous salic units, (inclusions (?) and introduced material) throughout core, contact with following grey granite approximately 40°.

Property Morgan Township Claim 60393 Location 600' W. of E. boundary
150' N. of S. boundary.

Hole No. 10671 Depth 2205.0 Dip 90° Strike Elev.

Depth	Description
	<u>Continued</u>
822.0	Granite with local strong structure breccias, grey to dark bluish grey, rough foliation 20° to core, bottom contact 20° to 25°.
878.5	Tuff, grey with greenish to brown tone, texture vague, local sections contain numerous brownish salic inclusions, scattered units of bluish grey to grey salic material throughout.
917.0	Granite dike, local structure breccia zone, very blocky, anhedral units of grey quartz and mauve to pink feldspathic material, chloritic contacts 45°.
1186.5	Tuff, variable in colour, swirly intergrowth of angular fragments and inclusions, scattered oval units dark green to brown which may be amygdules.
1346.0	Tuff and intercalated zones of granite, tuff as to 1186.5, with common zones and bands of bluish to pinkish grey granite.
1349.8	Granite pink to red, medium to coarse grained.
1555.2	Tuff as to 1186.5, over the last 7' of entry there is a gradual increase in the amount of salic material in the tuff.
1997.0	Micropegmatized tuff, light grey to white with yellow to pink tones, contact with tuff vague approximately 20°, most common constituent is creamy yellow to pink salic material (feldspar) with green femics, occasional semi-opaque bluish quartz unit, rough foliation locally at 45°, towards the end of entry there is an occasional zone or band of micropegmatite.
2166.0	Micropegmatite with zones and inclusions of micropegmatized tuff, common small white to pink acicular feldspars, femics dark green to black sometimes acicular, micropegmatized tuff shows assimilated borders.
2205.0	Micropegmatite, massive, medium to coarse grained, acicular feldspars and dark green femics are more common and more strongly developed, common epidote spots, small irregular units of grey quartz.

DIAMOND DRILL LOG

Sheet No.

Property Morgan Township Claim 60393 Location 600' W. of E. boundary.
150' N. of S. boundary.Hole No. 10671 Depth 2205.0 Angle 90° Strike _____ Elev. _____

Depth ft.	Formation
2205.0	<p data-bbox="336 616 528 642">End of hole.</p> <p data-bbox="624 720 1173 772">Hole started - June 9, 1953. Hole completed - August 5, 1953.</p> <p data-bbox="624 850 1090 876">Drilled by Smith and Travers.</p>

60388

Property Morgan Township, Claim 60393 Location See belowHole No. 10679 Depth 400.0 to 673.0 Dip 41° Strike N Elev. _____

Depth ft.	Formation
	B.H. 10679 was collared in Claim 60388 800' W. of E. boundary and 300' S. of N. boundary. It passed into Claim 60393 at a footage of 400'.
400.0	
474.0	Tuff, dark grey, massive, inclusions common $\frac{1}{2}$ " to $1\frac{1}{2}$ ", sulphide variable 5% to 40% - pyrrhotite, pyrite rare chalcopyrite and sphalerite.
518.3	Tuff, dark grey, numerous inclusions, 5% to 50% sulphides pyrrhotite, pyrite.
535.5	Amygdaloidal lava, intercalated tuff, scattered pyrrhotite spots.
600.0	Tuff, as to 518.3.
673.0	Tuff, light grey inclusions common, occasional pyrrhotite specks.
673.0	End of hole.

Hole completed August 15, 1953.

Drilled by Smith and Travers

Property Morgan Township Claim 60393 Location 5' N. of S. boundary
600' W. of E. boundary.

Hole no. 10680 Depth 438.0 Angle 30° Strike N. Elev.

Depth Ft.	Description
0.0	Collar.
10.0	Casing.
372.5	Tuff, dark grey to black, medium massive to massive, common small inclusions, types apparent (1) shard type of inclusions (2) bluish grey salic type (3) dull grey quartzites (4) mauvish grey to black slate inclusions, variable sulphides 2 - 30% pyrrhotite, nyrite, occasional chalcopyrite and zinc sulphide, few sulphide stringers at various angle to core.
438.0	Tuff, light grey, dark green to black mafics common many showing tabular habit, scattered inclusions, gradational from previous entry, scattered specks and spots pyrrhotite.
438.0	End of hole.

Hole started - August 16, 1953.
Hole completed - August 18, 1953.

Drilled by Smith and Travers.

Property Morgan Township, Claim 60402 Location 300' N. of S. boundary.
500' E. of W. boundary.

Well No. 10678. Depth 683.0' Dip 40° Direction N.W.

0.0	Collar.
4.0	Casing.
186.0	Tuff, black, medium massive, numerous inclusions locally constitute 70 - 80% of core, oval to angular, variable sizes, maximum 3", types apparent; shard inclusions, fine grained greenish cherty, inclusions bluish grey salic, black slate and grey to pinkish grey quartzite inclusions.
375.0	Tuff, grey matrix, inclusions less frequent and smaller average size.
683.0	Tuff, grey matrix, massive, inclusions numerous and show sharp contrast to matrix, variable in size, maximum 3" to 4", occasional band 1" to 1' of granite material, occasional spot and speck pyrrhotite, pyrite.
683.0	End of Hole.

Hole Started - July 29, 1953.
 Hole Completed - August 8, 1953.

Drilled by Smith and Travers.

Property Morgan Township Claim 60448 Location 300' E. of W. boundary.
50' N. of S. boundary.

Hole No. 10673 Depth 506.0 Dip 45° Strike N.W. Elev. -

Depth Ft.	Formation
0.0	Collar.
10.0	Casing.
300.0	Tuff, dark grey to black, medium massive, to massive, no apparent alignment, common small bluish grey salic units throughout, moderately common inclusions variable in size $\frac{1}{2}$ " down to very small units, types apparent; (1) light blue grey salic inclusions (2) dull grey quartzites, (3) occasional dark grey to black slate inclusions, (4) small lenses of dark greenish mafic material, scattered specks pyrrhotite.
419.0	Tuff, dark grey with greenish tone, medium massive, no alignment, inclusions as to 300.0 but predominantly by epidote.
450.0	Tuff, medium to light greenish grey, massive, inclusions common to locally numerous predominantly small $\frac{1}{4}$ " to $\frac{1}{16}$ ", rare inclusions $\frac{1}{2}$ " to $\frac{3}{4}$ ".
506.0	Tuff, light grey, massive, dark green to black femics common, towards end of entry, inclusions moderately common, variable in size, more frequent $\frac{1}{2}$ " to $\frac{1}{2}$ " inclusions.
506.0	End of Hole.

Hole started - June 28, 1953.
Hole completed - July 2, 1953.

Drilled by Smith and Travers.

Property Morgan Township Claim 60448 Location 300' W. of E. boundary.
350' S. of N. boundary.

Hole No. 10674 Depth 372.0 Angle 30° Strike W. Elev. -

Depth	Description
0;0	Collar.
12.0	Casing.
154.0	Tuff, dark grey to black, medium massive, inclusions moderately common $\frac{1}{2}$ " to $1/16$ ", rare incl. to $\frac{1}{2}$ ", bluish grey salic inclusions most common, rare dull grey quartzite inclusions, occasional carbonated inclusions, variable sulphides 2-20%, pyrrhotite, pyrite, common specks zinc sulphide, occasional chalcopyrite.
176.8	Tuff, medium to light grey, medium massive, numerous carbonate and shard inclusions $\frac{1}{2}$ " to $1/16$ ", other inclusions as to entry 154.0, 2-3% sulphides pyrrhotite, few specks pyrite, chalcopyrite and zinc sulphide.
208.0	Tuff, dark grey to black, medium massive, inclusions quite common locally numerous, types as to 176.8, 2-5% sulphides.
219.0	Tuff, black, fine grained, bedding 15° to 25° , inclusions common and larger, 1-3% sulphide pyrrhotite, few specks of zinc sulphide.
274.0	Tuff, medium grey, medium massive, inclusions as to 154.0
318.0	Tuff, dark grey to black, medium massive, numerous inclusions all sizes to a maximum of 3", common shard, bluish grey salic and quartzites inclusions, scattered creamy brown chert like inclusions.
372.0	Tuff, light bluish grey, very siliceous, blocky to medium massive, inclusions scattered to locally very numerous, predominantly dull grey quartzite inclusions.
372.0	End of Hole.

Hole started - July 4, 1953.
Hole completed - July 8, 1953.

Drilled by Smith and Travers.

Property Morgan Township Claim 60448 Location 300' W. of E. boundary.
100' S. of N. boundary.
Hole No. 10675 Depth 277.0' Angle 45° Strike W. Elev. -

Depth Feet	Formation
0.0	Collar.
10.0	Casing.
85.0	Tuff, dark grey to black, medium massive, local weak alignment at 45°, common small inclusions, occasional one 1" to 2", types apparent; bluish grey salic, quartzitic, greenish chert like, black slate, small pink to red feldspathic, inclusions, scattered small specks pyrite pyrrhotite.
107.0	Tuff, lighter grey than previous entry, more frequent ½" to 1" inclusions towards end of entry.
254.0	Tuff, dark grey to black, medium massive to massive, very numerous ½" to 2" inclusions, scattered specks, pyrite pyrrhotite.
277.0	Tuff, light grey, medium massive to massive, common dark green black femics, many of which show a tabular habit, scattered inclusions 1/16" to ½", predominantly light bluish grey salic and quartzite inclusions.
277.0	End of hole.

Hole started - July 9, 1953.
Hole completed - July 11, 1953.

Drilled by Smith and Travers.

Property Morgan Township Claim 60448 Location 300' W. of E. boundary
450' S. of N. boundary.

Hole No. 10676 Depth 303.0 Angle 45° Strike W. Elev.

Depth Feet	Formation
0.0	Collar.
8.0	Casing.
163.0	Tuff, dark grey, blocky to medium massive, common inclusions, variable size, maximum $\frac{1}{2}$ ", predominantly of a greyish salic nature with common carbonate content, scattered specks and spots pyrrhotite, pyrite - occasional chalcopyrite zinc sulphide.
173.5	Amygdaloidal lava, variable fine grained greenish grey rock with common oval to circular grey salic units grades through a small breccia zone into a facies containing rounded grey (local pink tones) units, few irregular pencil stringers and occasional splashes of pyrite.
176.5	Tuff as to 163.0
185.0	Amygdaloidal lava, light greenish grey, fine grained, medium massive, contains numerous oval to rounded units of grey salic material, rare specks of sulphides, common irregular pencil stringers of carbonate at various angles.
255.0	Tuff as to 163.0
303.0	Tuff, generally as to entry 163.0 but more frequent 1" to 2" shard and quartzite inclusions.
303.0	End of hole.

Hole started - July 12, 1953.
 Hole completed - July 14, 1953.

Drilled by Smith and Travers.

Property Morgan Twp. - Claim S.54169 Location 100' South of North boundary
500' East of West boundary

Hole No. 5997 Depth 1050.0' Angle 90° Strike _____ Elev. _____

Depth Ft.	Formation
0.0	Collar.
8.0	Casing.
100.0	Micropegmatite, coarse to medium grained, light pink, irregular and acicular femics, quartz, feldspar showing vaguelin in the granophyre.
285.0	Micropegmatite, very coarse grained, acicular and irregular femics, occasionally blotchy, feldspar vaguely seen in the granophyre.
350.0	Micropegmatite, as to 285.0', coarse grained,
512.0	Micropegmatite, medium to coarse grained, acicular femics and dark blotches in a granophyre matrix, feldspar generally not showing up.
542.5	Micropegmatite, coarse grained, light to medium pink, irregular and acicular femics, feldspar showing somewhat, occasional quartz.
578.0	Micropegmatite, similar to 542.5, but finer in grain, blotches have white feldspar in them and the granophyre shows vague thin feldspar laths.
977.0	Micropegmatite, as to 542.5.
1050.0	Micropegmatite, coarse grained, compact uniform texture, light to medium pink-grey, evenly blotchy, euhedral white feldspar fairly common, rare pyrite specks.

Date started: Oct. 12/50
Still drilling.

Property: Morgan Twp. - Claim S54169

100' South of North boundary

500' East of West boundary

Hole No

5997

Depth

3280.0'

Dip

-90°

Depth Ft	Description
1050.0	
1425.0	Micropegmatite, similar to previous entry but feldspars more prominent, still evenly blotchy, quartz less common.
1775.0	Micropegmatite, massive good looking uniform rock, euhedral feldspars fairly common, blotchiness is not a feature, minor disseminated alteration products.
2298.0	Micropegmatite, coarse grained, light pink, moderately blotchy, euhedral feldspars not uncommon.
2390.0	Micropegmatite-transition zone, medium grey, less blotchy, euhedral feldspars prominent.
2668.0	Transition zone, coarse to medium grained, shows variable alteration moderate to strong.
2695.5	Transition zone, coarse to medium grained, hypidiomorphic to panidiomorphic, practically unaltered.
2910.6	Transition zone, as entry to 2668.0 except shows lineation.
3280.0	Transition zone, medium grained, medium grey with slight pink cast, panidiomorphic.

END OF HOLE

Temporarily stopped - Jan. 15, 1951

Resumed: June 1, 1951

Completed: August 10, 1951.



Property Morgan Twp. - Claim S. 54183 Location 100' South of North boundary
300' East of West boundary

Hole No. 7470 Depth 3402.0' Angle 90° Strike _____ Elev _____

Depth Ft.	Formation
1600.0 1900.0	Micropegmatite, light to medium pink grey, quite blotchy, white feldspars common, dark constituents mostly in irregular areas, quartz.
1978.5	Transition zone micropegmatite, after 1900.0 the rock is more transition-like, coarse to medium grained.
2180.0	Transition zone, typical coarse to medium grained Capreol type, occasional epidotized band.
2694.0	Transition zone, medium grained, medium grey, faint pink, panidio- hypidiomorphic.
2730.0	Transition zone, coarse to medium grained, darker grey, mafics more prominent.
2989.0	Norite, coarse to medium grained, feldspar opaque, granophyre less distinct, mafics distinct euhedral to subhedral.
3151.0	Norite, altered, salic, light grey.
3174.0	Norite, granophyric, pink to grey, coarse grained.
3174.5	Norite, altered, dark grey, texture indistinct.
3211.0	Footwall complex, worked over granitic gneiss, blotchy light and dark areas.
3402.0	Granite gneiss, made up of light and dark bands, or irregular areas, occasional irregular band of breccia matrix.

END OF HOLE

Hole resumed: May 25, 1951
Hole stopped: July 25, 1951



1953

if needed

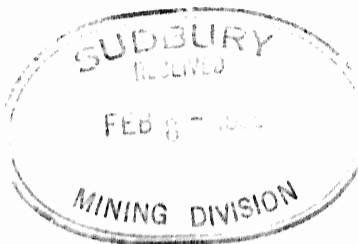
DIAMOND DRILL LOG

Sheet No.

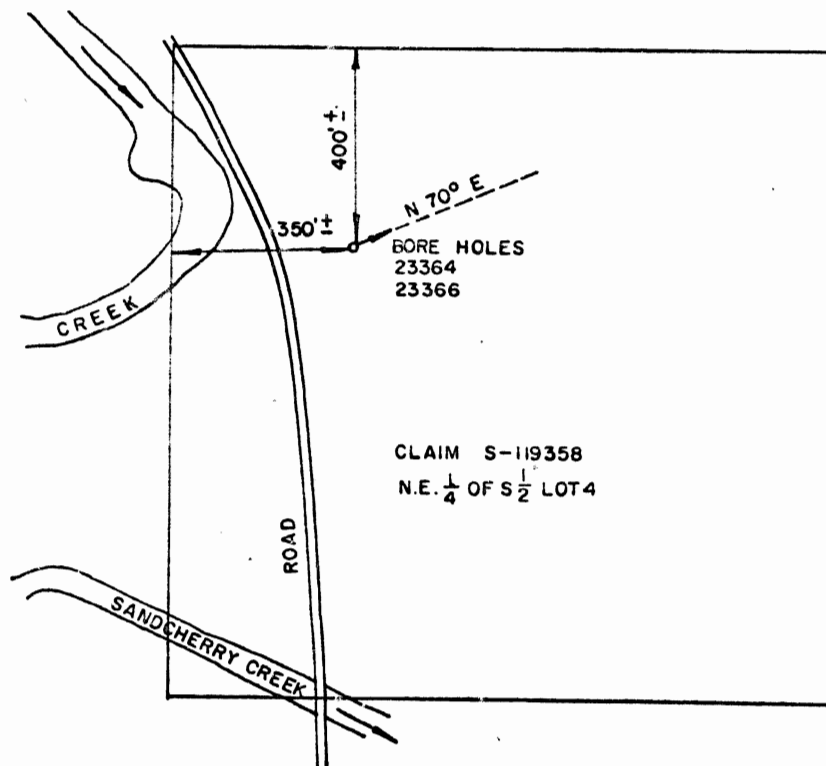
Property Morgan Township Location 700'S of N Boundary
Claim 76805 500'W of E Boundary

Hole No. 11737 Depth _____ Angle 30° Strike N Elev. _____

Depth Ft.	FORMATION
0.0	Collar
11.0	Casing
417.0	Tuff, dark grey to black matrix, medium massive, numerous inclusions.
418.5	Trap, fine grained,
433.0	Tuff as to 417.0, very blocky.
600.0	Tuff as to 417.0
600.0	END OF HOLE
	EXT
	Hole Started - October 28, 1954
	Hole completed- November 6, 1954
	Drilled by - Smith & Travers Company Limited.



SKETCH SHOWING DRILL HOLES
IN MINING CLAIM S-119358
THE NE $\frac{1}{4}$ OF THE S $\frac{1}{2}$ OF LOT 4 CONC III
TOWNSHIP OF MORGAN



LOT 4 LOT 3
CON. III