

LEVACK-0010-B1

LOAD: 16 mm.

DD 11

Diamond Drilling

Township of LEVAC

Report NO 11

Work performed by: Inspiration Mining & Development Co. Ltd.

Claim NO	Hole NO	Footage	Date	Note
S 61541	17	2027.0'	Oct/55	
	12	397.0'	July/55	

TOTAL: 2 DH 2424 FT

Notes:

DIAMOND DRILL RECORD

Hole No. 17 Sheet No. 1

Property Sam Taylor
 Location Trps. of Levasik, Cartier & Cascade
on Mining Claim S-61541
 Latitude _____
 Departure _____
 Bearing South 40 West Mag. by hand compass

at Zero ft.	Dip	61
at 600 ft.		60
at 1200 ft.		57 30
at 1800 ft.		51

Total Footage 2027 ft.

Elev. Collar _____
 Datum _____
 Date Started Oct. 31st, 1955.
 Date Completed March 9th, 1956.
 Drilled by Inspiration Mining & Development Co., Ltd
 Logged by L. Jefferson

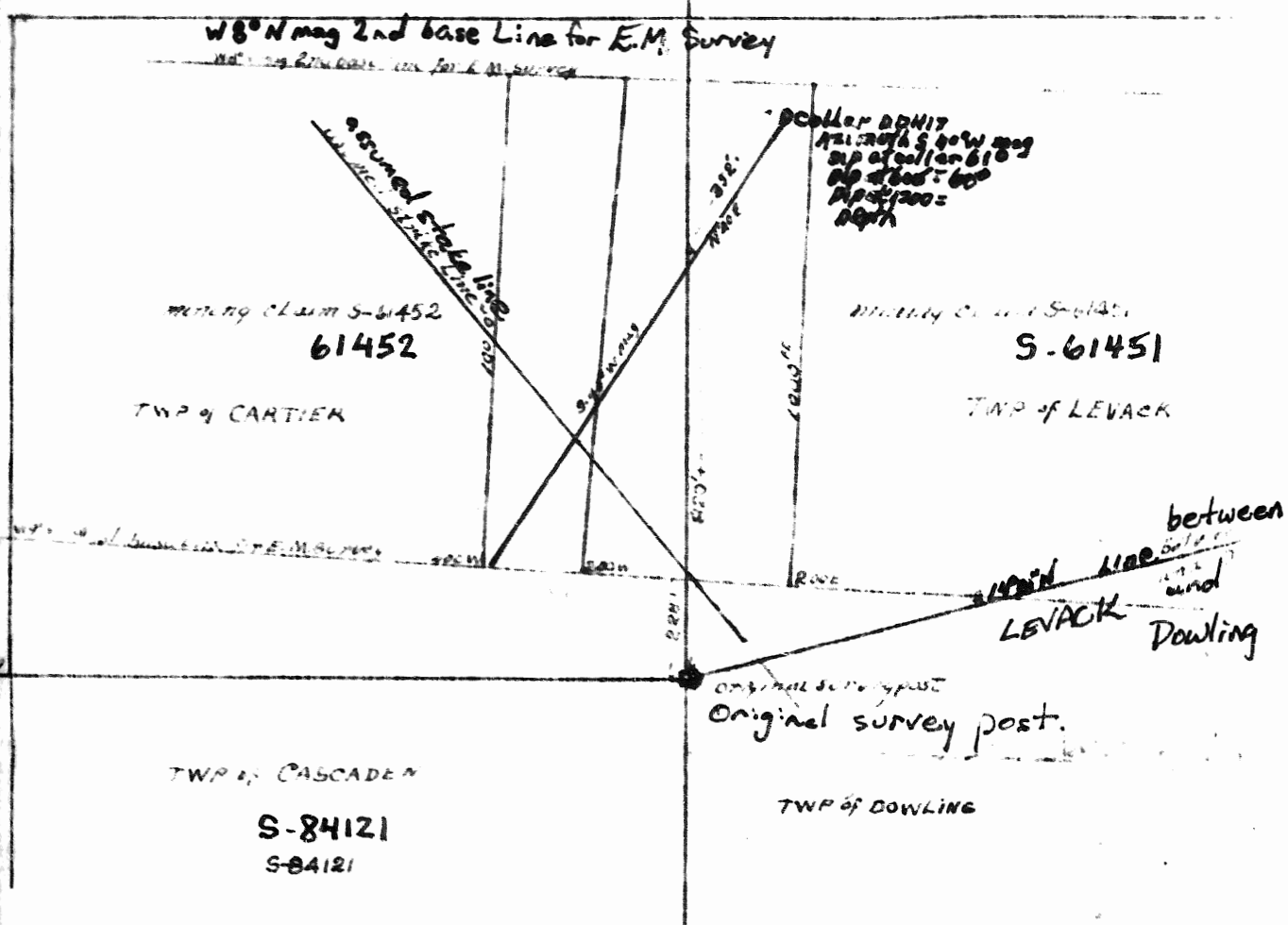
Footage		Formation	Sample Number	Sample Footage	Sample Width	Gold Sample	Gold Sludge	Remarks
From	To							
0	6	Casing						
6	50	Altered Granite Gneiss						
50	75	Altered Granodiorite and Altered Gneiss						Excess Quartz & Feldspar
75	100	Altered Quartz Diorite						Pyrrhotite & Chalco present
100	242'6"	Altered Biotite Gneiss Excess Seldspar & Quartz in places						pyrrhotite, visible pyrrhotite
242'6"	246	Diabase - Very fine grained						6" mud seam 240'3"
246	248	Pink Granite Breccia						
248	500	Mostly Granodiorite some bands Gneissic						Fracture on long axis,
500	581	Quartz Diorite and Altered Quartz Diorite						pyrrhotite in Fr. - Pyrrhotite
581	800	Altered Granite Gneiss and Altered Granite						& pyrrhotite, visible
800	817	Altered Diorite						pyrrhotite in fracture seams
817	873	Altered Diorite becoming Gneissic						Fractured & broken
	873	Contact with Olivine Diabase F1						Fine grained
873	1056'6"	Olivine Diabase						Coarse in center
	1056'6"	Contact						
1056'6"	1066	Altered Diorite						Visible pyrrhotite & pyrrhotite
1066	1075	Granite Breccia						
1075	1129	Altered Diorite						
1129	1136	Mostly Levasik Breccia						Fragments Granite
1136	1153	Altered Diorite (Quartz)?						More than normal metallic
1153	1221	Quartz Diorite mostly (bands somewhat Gneissic)						1160'6" narrow seam Chalco
1221	1275	Altered Granodiorite - Gneissic in places						
1275	1327'9"	Breccia						
1327'9"	1356	Diorite Altered (Quartz Diorite)?						
1356	1371'6"	Breccia						
1371'6"	1428	Altered Quartz Diorite Chloritised						
1428	1443	Breccia						

Date of Examination During drilling

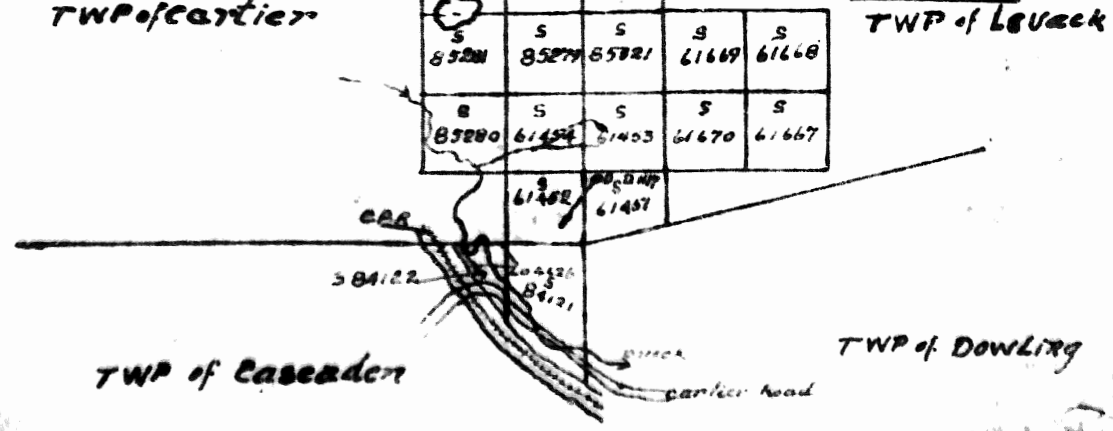
L. Jefferson

PLAN
mining claims
 Showing Location of D.D.N 77017
 Claims in the name of S. Taylor

S-61452-S-61451
 Scale 1" = 300'



PLAN
 Showing mining claims in the name of
 and held under option by
 S. Taylor of Toronto on which
 diamond drilling has been done
 Showing location
 of D.D.N 77017
 Scale 1" = 400'



DIAMOND DRILL RECORD

Hole No. 12

Sheet No. 1

Property **S. Taylor in ~~W. Taylor~~ Cartier Twps:**
 Location **on S. 61⁴/₂; 200' north Easterly from drilling**
base line A.B. commencing at picket for D.D.H # 9
thence 60' Easterly.

Latitude _____
 Departure _____
 Bearing **S. 44° W. by hand compass**

Dip
 57°
 Test at 300' - 60°

Total Footage 397'

Elev. Collar _____
 Datum _____
 Date Started **July 8th/55**
 Date Completed **July 12th/55**
 Drilled by **L. Jefferson,**
 Logged by **L. Jefferson**

Footage		Formation	Sample Number	Sample Footage	Sample Width	Gold Sample	Gold Sludge	Remarks
From	To							
0	14	Casing; core recovered from 10'9" to 13'						
14	20'8"	Altered granodiorite, specks of pyrrhotite, chalcopyrites and pyrities in several places						
20'8"	25'	lost core						
25	28	Altered granodiorite						
28	31'8"	70% white feldspar						
31'8"	44'8"	Medium grained granodiorite						
44'8"	46'4"	Fine grained granodiorite with visible showings of metallics mostly pyrities, the last 3" - quite a lot.						
46'4"	55'5"	Lost core grinding						
55'5"	75	Altered granodiorite with alternating bands of excess feldspar (pink and red), visible pyrities in places, rock gneissic in places, evidence of fracturing, sulphide metallics, pyrities at 58'8", 62'6", 63'6", 66'7", 66'10", 67'5", 71'8", 74'4".						
75	80'2"	Very fine grained granodiorite (look like fine grained diorite)						
80'2"	95'	Medium grained granodiorite: pyrities within the core at 94'						
95	96	Becciated locking rock (pink feldspar) a small showing of chalcopyrite						
96	97'6"	Black rock very fine grained, shows crushing and re-cementing.						
97'6"	98'8"	very fine grained						
98'8"	106'6"	Altered granodiorite, excess feldspar: 1' at 103', notable pyrities 101'4" - 102'6".						
106'6"	107'3"	Ground core						
107'3"	140'7"	Fine grained to medium granodiorite; notable pyrities at 107'10" 112'4"; 115'3"; 123' to 125 and 129' to 129'8"						
140'7"	146'	70% to 80% pink feldspar, particles of pyrities through to 146'						
146	152'9"	Medium to fine grained small showing of pyrrhotite in core at 150'2" and 151'7"						

cont'd.

DIAMOND DRILL RECORD

Hole No. 12 Sheet No. 2

Property S. Taylor: Levack & Cartier Twps.

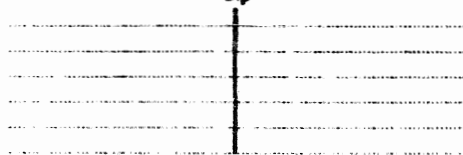
Location

Latitude

Departure

Bearing

Dip



Total Footage

Elev. Collar

Datum

Date Started

Date Completed

Drilled by

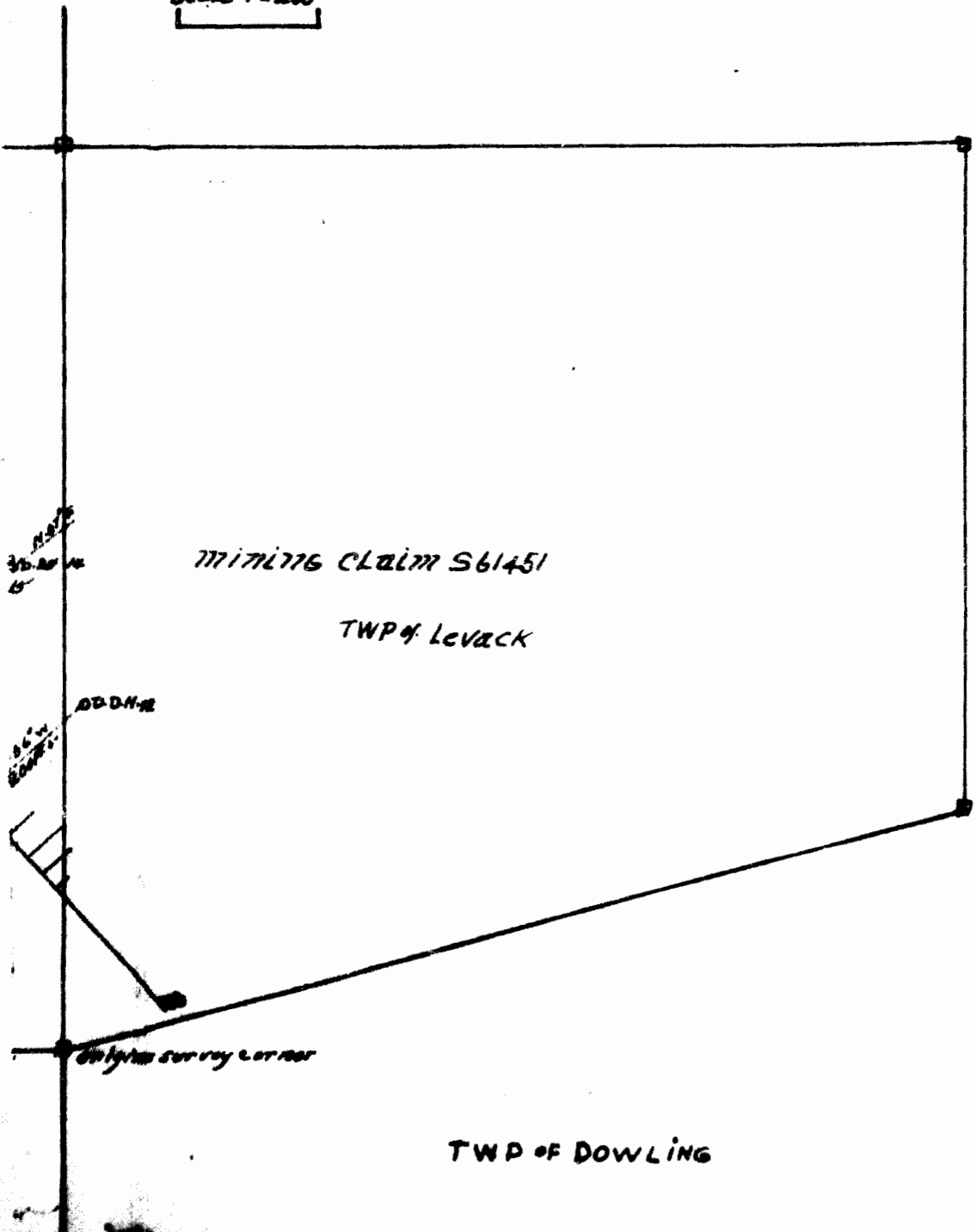
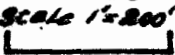
Logged by

Footage		Formation	Sample Number	Sample Footage	Sample Width	Gold Sample	Gold Sludge	Remarks
From	To							
		continuation						
152'9"	153'8"	Lost core ground						
153'8"	174'8"	Fine grained granodiorite with bands of feldspar						
174'8"	176	Altered granodiorite, small showing calcopyrite, excess feldspar last 7"						
176	200	Fine to medium grained granodiorite, 9" feldspar at 178', 2" quartz at 199'9"						
200	225	Altered granodiorite, much fracturing, nearly all fractures re-cemented with calcite and pyrities, a little with the core -203'5"						
225	250	Altered granodiorite crushed						
275	287'6"	Altered granodiorite, much excess feldspar						
287'6"	288'3"	Very black rock with small elongated crystals (white) sample taken for identification only						
288'3"	325	Medium grained alternating bands of 80% white feldspar and pink feldspar, core has evidence of much crushing and fracturing, small showings of py pyrities at 302'3", 308'8", 315'1", 323'.						
325	350	Quite altered with excess white feldspar throughout core, medium to fine grained showings of metallics of pyrrhotite, pyrities at 345'3", 346'1" to 347'4" and 348'5" core broken.						
350	357'10"	Altered gneissic in places and broken excess of feldspar & mica (biotite) some metallics showing at 350'1", 351 to 351'7", 353'8", 354'4", 356'8", 357'3" end of metallics						
357'10"	397'	Much more gneissic.						
		End of Hole						

L. Jefferson

N

CLAIMS 561451 and 561452
by Location 2-Drill Holes No. 11, 12, 13, 14
Scale 1"=200'



77171776 CLAIM 561451

TWP of LEVACK

TWP of DOWLING

ODD-N-E

Survey corner

30.00 ft

30.00 ft

PLAN of 12 MINING CLAIMS

in the name of S. Taylor on which Diamond Drilling was done.
 Showing base line A-B and Location of Drill Holes 15-16-10 Scale 1" = 200'

TWP of Cartier and Leveak

S-85281	S-85279	S-85321	S-61669	S-61668
S-85280	S-61454	S-61453	S-61670	S-11667

TWP of Leveak

TWP of Cartier

Call to D.M. 15'
 S-61452
 D.M. 9.4'

S-61451

Original. pad.

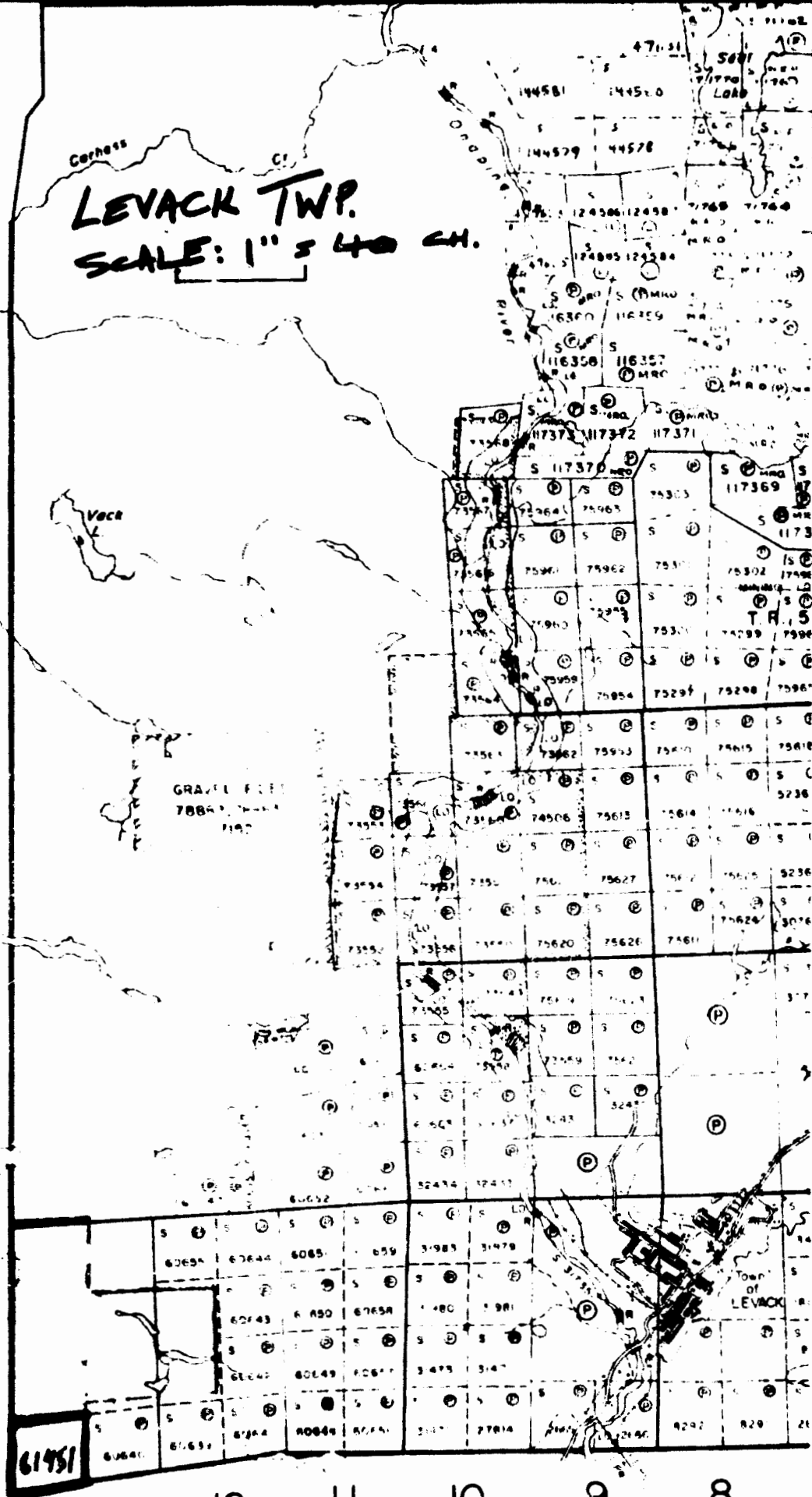
TWP of Cascaden

TWP of Dowling

LEVACK TWP.

SCALE: 1" = 40 CH.

CARTIER TWP. (M.704)



13 12 11 10 9 8

DOWLING

Cartier