



41112NE0010 0011D1 HESS

010

Diamond Drilling

Township of Hess

Report NO: 11

Work performed by: Jaybee Landry Expl. & Mining Co. Ltd.

Claim NO	Hole NO	Footage	Date	Note
S 132748	1	35'		(1)
	2	62'		
	3	35.5'		
	4	59'		
	5	76'		
	6	126'		
	7	26'		
	8	105'		
	9	36'	Nov/68	(2)

Total: 9DH 560.5

Notes:

- (1) Drilling dates for holes 1-8 are unknown; location map is dated Sept/66
- (2) 11/0/69

LOG DIAMOND DRILL CORE

HOLE # 1

Bearing - Northwest - North 25°
Dip - 50°
Length - 35 feet
Core Diameter - 1 inch

0 - 35' Medium grained gabbro.

Note: Hole drilled under footwall. Abandoned because hole too steep to intersect footwall at short distance.

Bardwell

HOLE # 2

Bearing - Northwest - North 40° West
Dip - 34°
Length - 62 feet
Core Diameter - 1 inch

0 - 3' Massive magnetite with banded limestone and schist.
Some leaching, malachite and pyrite.

3 - 4' Some magnetite in chloritic schist.

4 - 6' Banded magnetite, limestone, and schist.
Little pyrite.

6 - 8' Ground Core

8 - 10' Banded magnetite-limestone.
Intermittent leaching and malachite stain.

10-14' Banded magnetite, limestone and schist.

14 - 17' Ground Core.

17 - 22' Broken ground. Banded magnetite, limestone, and schist.
Little leaching - pyrite.

22 - 32' Banded magnetite, limestone, and schist.
Some carbonate sections with pyrite.

32 - 62' Banded magnetite and limestone, little schist.
Increased proportion of limestone.
Some pyrite and little chalcopyrite.
No leaching.

J. Barbour

HOLE #3

Bearing - Southeast - South 40° East
Dip - 50°
Length - 35'
Core Diameter - 1 inch

0 - 8' Banded magnetite, limestone, and schist
Considerable leaching
Malachite stain

8 - 11' Banded magnetite with greater proportion of limestone
than 0' - 8'

11 - 19' Mostly magnetite
Little limestone

19 - 33.5' Mostly magnetite
Lesser proportion of limestone and schist
Narrow stringers of quartz at 29' - 30'

33.5 - 34.5' Limestone

34.5 - 35.5' Gabbro -- medium grained

J. B. Seward

HOLE #4

Bearing	- Northwest - North 40° West
Dip	- 82.5°
Length	- 59 feet
Core Diameter	- 1 inch
0 - 12'	Banded magnetite, limestone, and schist Some leaching and malachite stain
12 - 13.5'	Mostly magnetite
13.5 - 27'	Broken ground Banded magnetite, limestone, and schist
27' - 28'	Mostly carbonate. Little magnetite. Some pyrite.
28 - 35'	Mostly magnetite. Little carbonate and schist. Small pyrite crystal at 35'.
35 - 45'	Banded magnetite, limestone, and schist 1/8" stringers of hematite at 39'.
45 - 49.5'	Limestone
49.5 - 59'	Gabbro
GROUND	Total 8' core
0 - 21'	Ground 6"
2 - 5'	Ground 12"
5 - 7'	Ground 6"
8 - 15'	Ground 12"
16 - 23'	Ground 54"

J. Bardwell

HOLE #5

Bearing - Northwest -- North 40° West
Dip - 83°
Length - 76'
Core Diameter - 1 inch

0 - 9' Banded magnetite, limestone, and schist.
Some leaching.
Malachite and pyrite. Ground 1' core.

9 - 15' Banded magnetite, limestone, and schist.
Small bands of pyrite at 12 and 12.5 feet.

15 - 36' Mostly magnetite banded with limestone. Some pyrite.
Little chalcopyrite.

36 - 36.5' Mostly limestone and schist.

36.5 - 42' Mostly magnetite. Some pyrite.

42 - 43.5' About one-half limestone and schist. Some pyrite.
Remainder magnetite.

43.5 - 50' Banded magnetite, limestone, and schist.
Some pyrite and chalcopyrite.

50 - 64' Banded magnetite, limestone, and schist.
Higher proportion of limestone.

64 - 76' Banded magnetite, limestone, and schist.

J. Bardswell

HOLE #6

Bearing - Southeast 20°
Dip - 70°
Length - 126 feet
Core Diameter - 1 inch

- 0 - 5' Altered quartzite and greywacke
 $\frac{1}{2}$ inch bleb of pyrrhotite at 5'
- 5 - 12' Altered quartzite and greywacke. Fine grained.
Chert, 12", at 11 feet
- 12 - 25' Thinly bedded quartzite and greywacke.
Slightly mineralized with pyrite.
- 25- 47' Highly altered quartzites and greywacke
- 47 - 85' Altered quartzites and greywacke
- 85 - 86' Impure limestone. Narrow stringers of
hematite - 1/8"
- 86 - 114' Limestone with less hematite than previous section.
- 114 - 120' Limestone with 1/8" stringers of magnetite
approximately 12" apart.
- 120 - 124' More frequent stringers of magnetite in limestone-
-- 1/8"
- 124 - 124.5' Brecciated magnetite and limestone
- 124.5-126' Banded magnetite in limestone - 1/8" to 1/4"

J. B. S. Welch

HOLE #7

Bearing - South 35° East
Dip - 68°
Length - 26 feet
Core Diameter - 1 inch

0 - 6' Plus 40% Fe.
Narrow stringers of schist and limestone.

6 - 6'2" Leached section.
Magnetite, pyrite, and azurite.

6'2" - 9' Plus 40% Fe. Some limestone stringers.
1/4" pyrrhotite at 8'.

9 - 20' Quartz - hematite.
Ground 3" core. Magnetite-limestone.

20 - 26' Ground core due to caving of vug between 20' - 23'.

J. B. Sweet

HOLE #8

Bearing - North 35° West
Dip - 40°
Length - 105 feet
Core Diameter - 1 inch

- 0 - 12' Plus 40% Fe in magnetite
Calcite and schist stringers
Ground 4' core.
- 12 - 15' Magnetite (40% Fe)
Little chalcopyrite at 13'
- 15 - 21' Fine grained magnetite (40% Fe)
3" of chloritic schist at 19'
- 21 - 29' Fine grained magnetite (40% Fe). Spots
rather than stringers of calcite. Little schist.
Little pyrite at 29'.
- 29 - 38' Fine grained magnetite (40% Fe). Spotty
calcite, little quartz. 3" disseminated pyrite
at 36'.
- 38 - 49' Fine grained, occasional coarse grains magnetite
(40% Fe) with schist stringers. Little calcite
- 49 - 60' Fine grained magnetite - spotty calcite.
Little schist.
- 60 - 68' Fine grained magnetite - spotty calcite--3-5% pyrite
(40% Fe). Little schist
- 68 - 81' Fine grained magnetite and schist (40% Fe).
Little chalcopyrite at 73' and 78'.
- 81 - 88' Fine grained magnetite (50% Fe) Some schist.
Little chalcopyrite at 85'.
- 88 - 105' Fine grained magnetite (40%) more schist than
previously. Little chalcopyrite at 88'.
Pyrite disseminated sparingly.

J. Bardswell

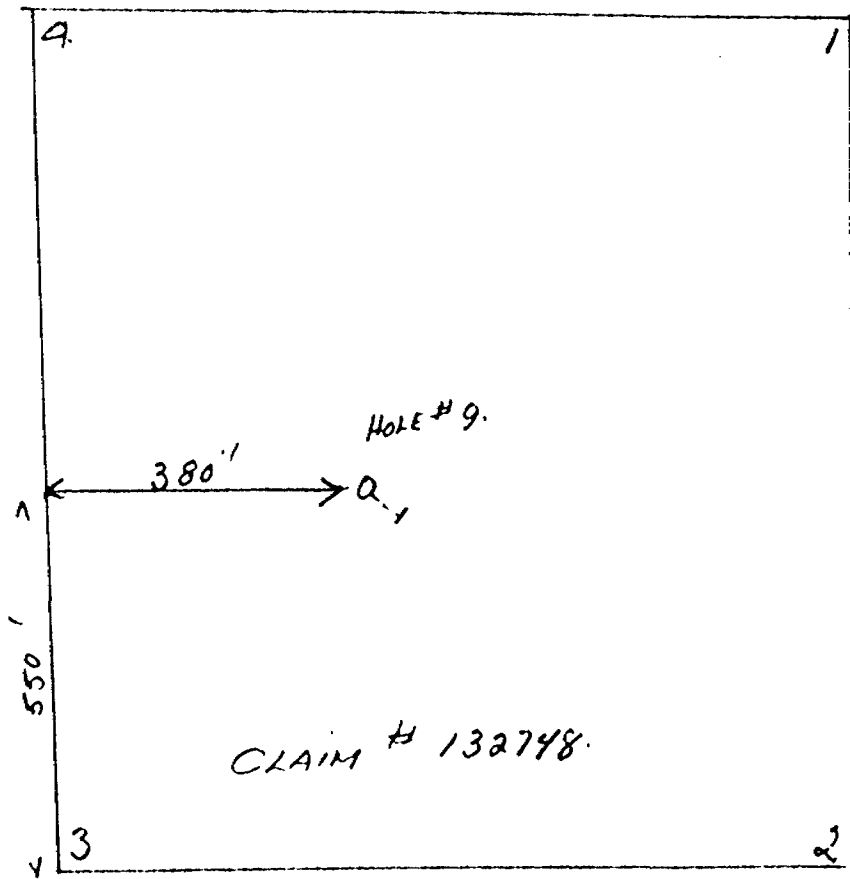
HOLK #9

Hess Township

Bearing - South 50° East
Dip - 50°
Length - 36 feet
Core Diameter - 1 inch

0 - 5'	Overburden
5' - 26'	Banded Magnetite, Schist, and Limestone
26' - 36'	Altered Quartzite

Bardswell



J. Bardwell



Oct. 7/66



41112NE0010 0011D1 HESS

900

Dr. J. F. Donovan,
Resident Geologist,
Box 1030,
Sudbury, Ont.

Dear Sir:

We enclose herewith diamond drill log and sketch pertaining to work performed on S.132748 in Hess Township, in the name of Cyril Joseph Landry.

Yours very truly,

R. Duvall
for K. M. Hallock
Mining Recorder

/rd
encl.

8 D.M.H. and plan



ONTARIO

THE MINING ACT REPORT OF WORK

REC
July 16/69

#140

A separate form is required for each type of work to be recorded.

To the Recorder of Sudbury Mining Division
I, Jarvis Landry Exploration & Mining Co. Ltd. name of Recorded Holder
229580 (O.J. Landry) Miner's Licence
248 Brubair Ave., Sudbury, Ontario Post Office Address

do hereby report the performance of 9 days of Diamond Drilling type of work
not before reported to be applied on the following contiguous claims

Claim No.	Days	Claim No.	Days	Claim No.	Days
<u>8132748</u>	<u>9</u>				

All the work was performed on Mining Claim (s) 8132748
(In the case of geological and/or geophysical survey (s) where more than 18 claims are involved attach a schedule)
PLEASE CAREFULLY THE FOLLOWING INFORMATION IS REQUIRED BY THE MINING RECORDER.

- For Diamond Work, Sinking or Opening up of Shafts, Sinking Shafts or Other Actual Mining Operations - Names and addresses of the men who performed the work and the dates and hours of their employment.
- For Drilling and other Core Drilling - Name, No. and angle of holes and diameter of core. Name and address of operator of drill. Depth of hole. Name and address of person who drilled core logs and sketch in duplicate.
- For Power Drilling - Name and address of owner or operator. Amount expended. Dates on which work was done. Proof of actual cost must be submitted within 30 days of recording.
- For Geological and Geophysical Survey - The names and addresses of men employed as well as dates. Type of instrument used in the case of geophysical survey. Reports and maps in duplicate must be filed with the Minister within 60 days of recording.
- For Land Survey - the name and address of Ontario Land surveyor.

The Required Information is as Follows: (Attach a list if this space is insufficient)

Footage--36 feet
Hole No. 9
Bearing - South 50° East
Dip - 80°
Core Diameter - 1 inch
Owner--O. J. Landry, 37 Gill Street, Onaping, Ontario
Date of Drilling--Nov. 22, 23, 1968

Date MAY 26, 1969

J. Bardawich
Signature of Recorded Holder or Agent

The Mining Act
Certificate Verifying Report of Work

I, J. Bardawich, P. Eng.
248 Brubair Ave., Sudbury, Ontario
(Post Office Address)

hereby certify:
1. That I have a personal and intimate knowledge of the facts set forth in the report of work annexed hereto, having performed the work or witnessed some during and/or after its completion.
2. That the annexed report is true.

SUDBURY
MINING DIV
MAY 20 1969

Dated MAY 26, 1969
J. Bardawich
Signature

2. 132748

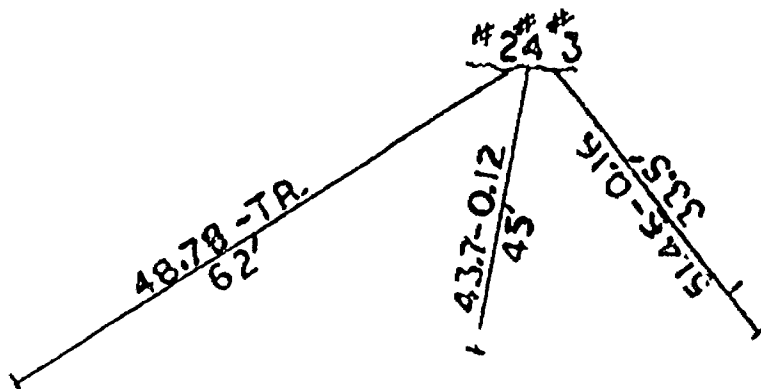
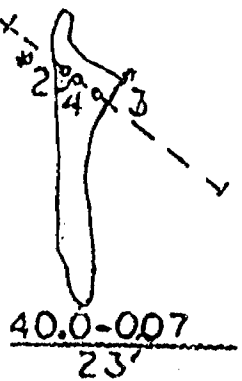
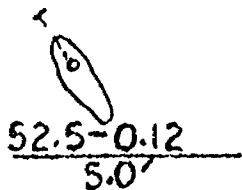
THE PENALTY FOR MAKING A FALSE STATEMENT IN THIS REPORT AND/OR CERTIFICATE IS \$500. OR SIX MONTHS IMPRISONMENT OR BOTH

N 93' - hole 128' deep
drilled S.



3.22% CU.
SELECT SAMPLE

NORTH

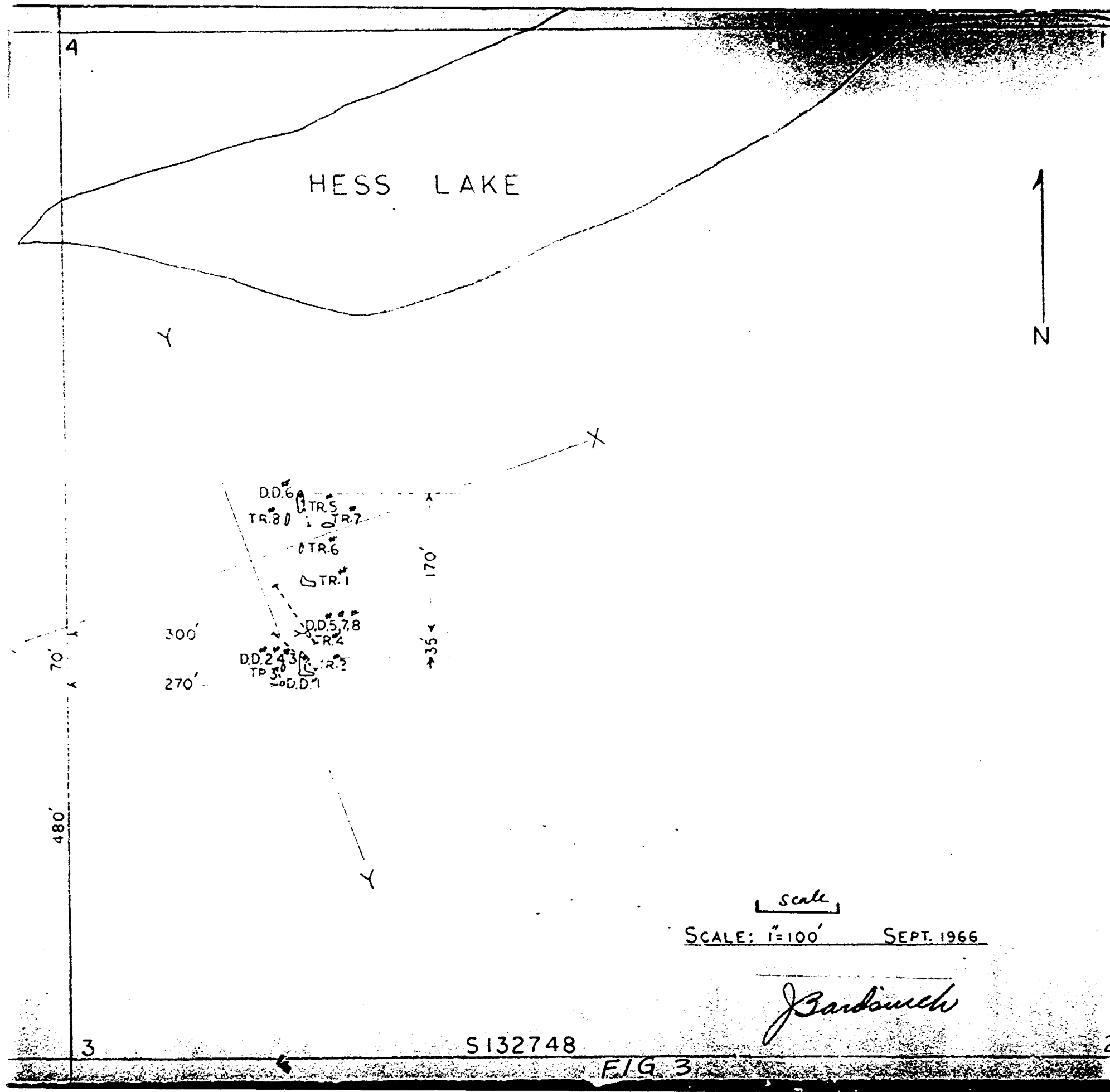


SECTIONS



54.46-0.16 = % SOL FE - % CU.
33.5 FEET

SCALE: 0 10 20 FT.



HESS LAKE



D.D.6
 TR.80 TR.5 TR.7
 TR.6
 TR.1
 D.D.5,7,8
 TR.4
 D.D.2,4,3
 TP 30
 D.D.1

300'
 270'

170'
 35'

480'

scale

SCALE: 1"=100' SEPT. 1966

J. Bardsuch

5132748

FIG 3

4

3

2