

HESS - 0011-A1

Load: 16 mm

DD-15

Diamond Drilling

Township of Hess

Report NO: 15

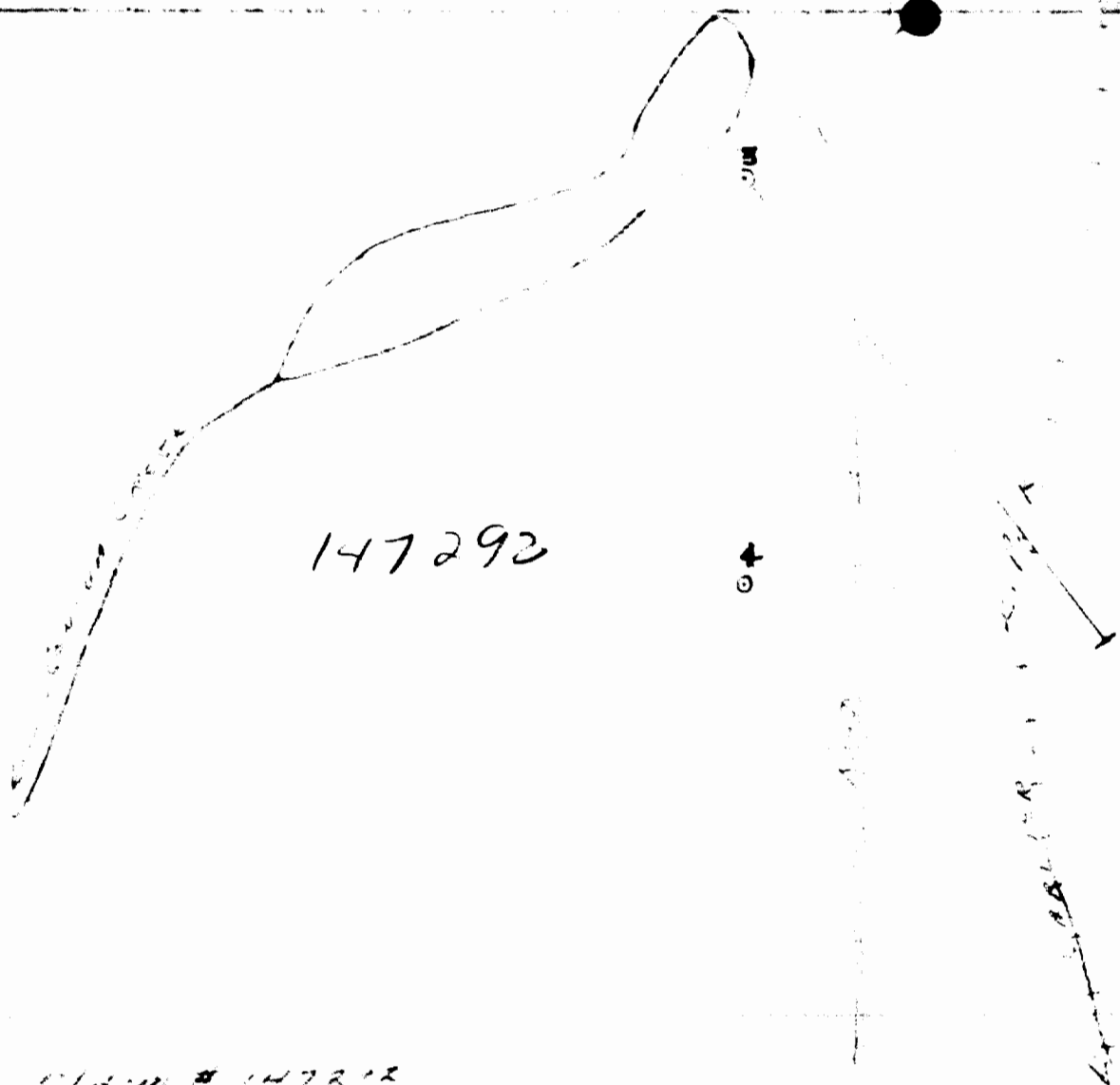
Work performed by: Moncrieff Syndicate/ Ralph I. Berner

Claim NO	Hole NO	Footage	Date	Note
S 147292	M-3	941'	May/68	
	M-4	743'	May/68	
S 147293	M-5	1428'	May/68	

total: 3DH 3112'

Notes:

Muscle
Hess



MIN # 147292

W E I D N	D P	-45°	STRIKE	140°	DEPTH	941
#4	D.D.H.	DIP.	VERTICAL	-	DEPTH.	743

MIN 1 PENN

Hess 743

Sudbury Mining Division

Scale

MONCRIEFF SYNDICATE
Company

Drill Hole Log

M - 5

Dip Tests

At Ft.
At Ft.
At Ft.
At Ft.
At Ft.
At Ft.

Property Moncrieff Twp.
At
Claim No.
Working Place
Baseline Footage
Baseline Offset
Date Started May 30, 1968
Date Completed May 25, 1968

Hole Number
Dip Vertical
Length 1428.0
Bearing
Elev. Collar
Horiz. Trace
Vert. Trace
Date Logged

FROM	TO	DESCRIPTION	SAMPLE NUMBER	ASSAY
0	14.0	Caving		
14.0	28.0	Britty quartzite		
28.0	268.0	Conglomerate, mostly quartz pebbles, sections up to 5' of interbedded quartzites, scattered pyr. Bedding 25° to core		
268.0	714.0	quartzite, scattered pyr. 469 - 470, fract'd 474 - 475, " 482 - 485, " 683 - 685 "		
714.0	789.0	Conglomerate, close packed gray granite pebbles 714 - 727, well fract'd		
789.0	912.0	quartzite		
912.0	1094.0	Interbedded quartzites and conglomerates. The egl. has gray granite pebbles, with odd quartz pebble Bedding 45° to core		
1094.0	1364.0	Mainly limestone, with interbedded shales - bedding 80° to core		
1364.0	1370.0	Impure quartzite		
1370.0	1401.0	White quartzite 1306 - 1401, fract'd		
1401.0	1428.0	Granite		
	1428.0	END OF HOLE		
		END OF HOLE		

Logged by Ralph I. Jenner

MONCRIEFF SYNDICATE
Company

Drill Hole Log

M - 5

Dip Tests

At _____ Ft.
At _____ Ft.
At _____ Ft.
At _____ Ft.
At _____ Ft.
At _____ Ft.

Property Moncrieff Twp.
At _____
Claim No. 147714
Working Place _____
Baseline Footage _____
Baseline Offset _____
Date Started May 30, 1968
Date Completed May 25, 1968

Hole Number _____
Dip Vertical
Length 1428.0
Bearing _____
Elev. Collar _____
Horiz. Trace _____
Vert. Trace _____
Date Logged _____

FROM	TO	DESCRIPTION	SAMPLE NUMBER	ASSAY
0	14.0	Caving		
14.0	28.0	Britty quartzite		
28.0	268.0	Conglomerate mostly quartz pebbles, sections up to 5' of interbedded quartzites, scattered pyr. Bedding 25° to core		
268.0	714.0	quartzite, scattered pyr. 469 - 470, fract'd 474 - 475, " 482 - 485, " 683 - 685 "		
714.0	789.0	Conglomerate, close packed gray granite pebbles 714 - 727, well fract'd		
789.0	912.0	quartzite		
912.0	1094.0	Interbedded quartzites and conglomerates. The cgl. has gray granite pebbles, with odd quartz pebble Bedding 45° to core		
1094.0	1364.0	Mainly limestone, with interbedded shales - bedding 80° to core		
1364.0	1370.0	Impure quartzite		
1370.0	1401.0	White quartzite 1306 - 1401, fract'd		
1401.0	1428.0	Granite		
	1428.0	END OF HOLE		
		END OF HOLE		

Logged by Roloh I. Jenner

147293

600

C.P.R.

ROAD

CLAIM # 147293.

5 D.D.M. DIP. VERTICAL.

DEATH. 1420

RALPH. I. BENNER.

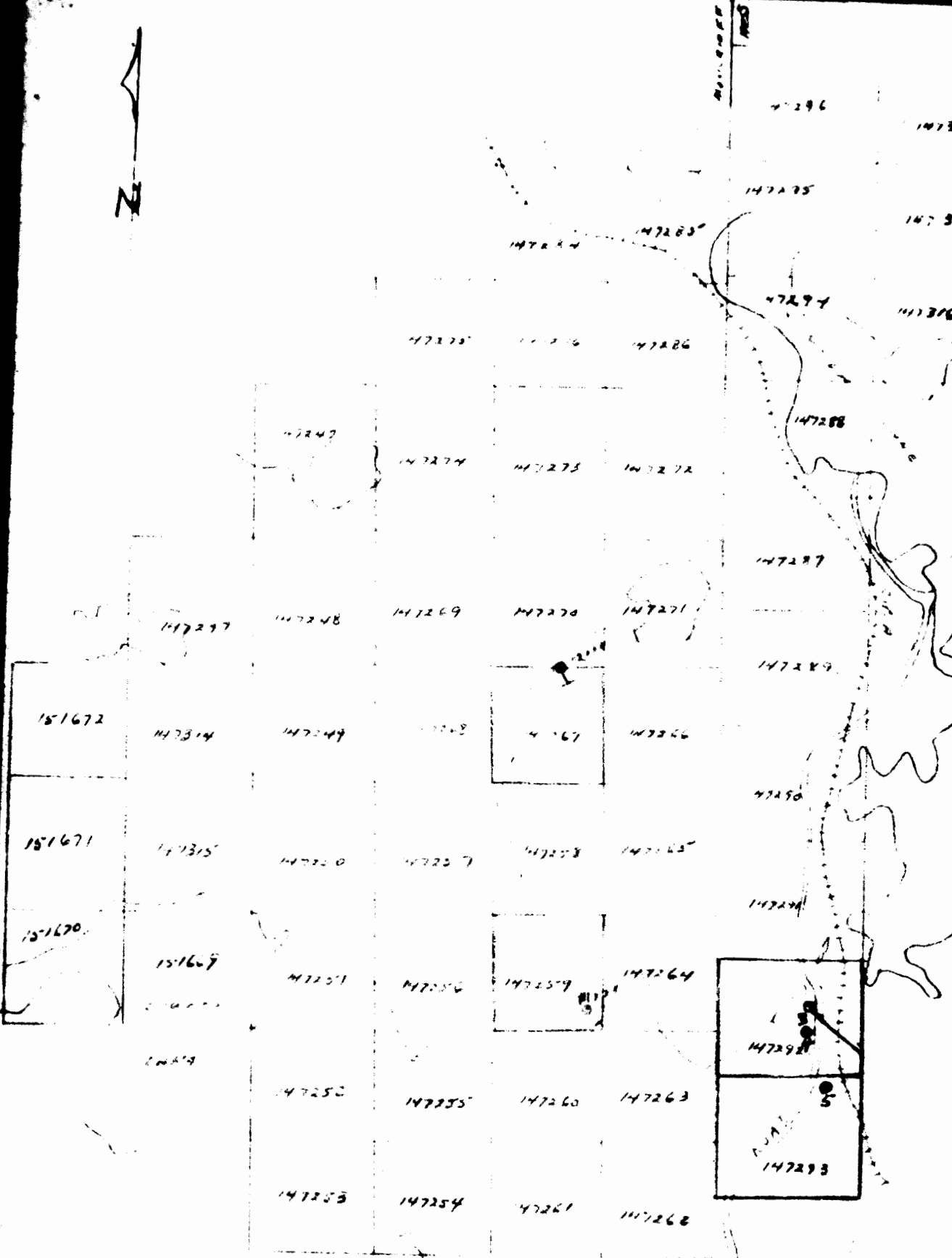
Hess Twp.

Sub. Div. Mining Division

Hess Twp
Hess Twp



MONCRIEFF
HESS



MONCRIEFF & HESS TWP.

MONCRIEFF & HESS TWP.

MONCRIEFF & HESS TWP.

Sudbury Mining Division

MONCRIEFF
HESS TWP.