

36+00N

30+00N

20+00N

10+00N

BASE LINE

0+00S

20+00S

24+00S


LEGEND

INSTRUMENT - TOTAL FIELD PROTON MAGNETOMETER
VALUES ABOVE DATUM LEVEL OF 59,000 GAMMAS

CONTOUR INTERVAL 100 GAMMAS

100 GAMMA CONTOUR 

500 GAMMA CONTOUR 

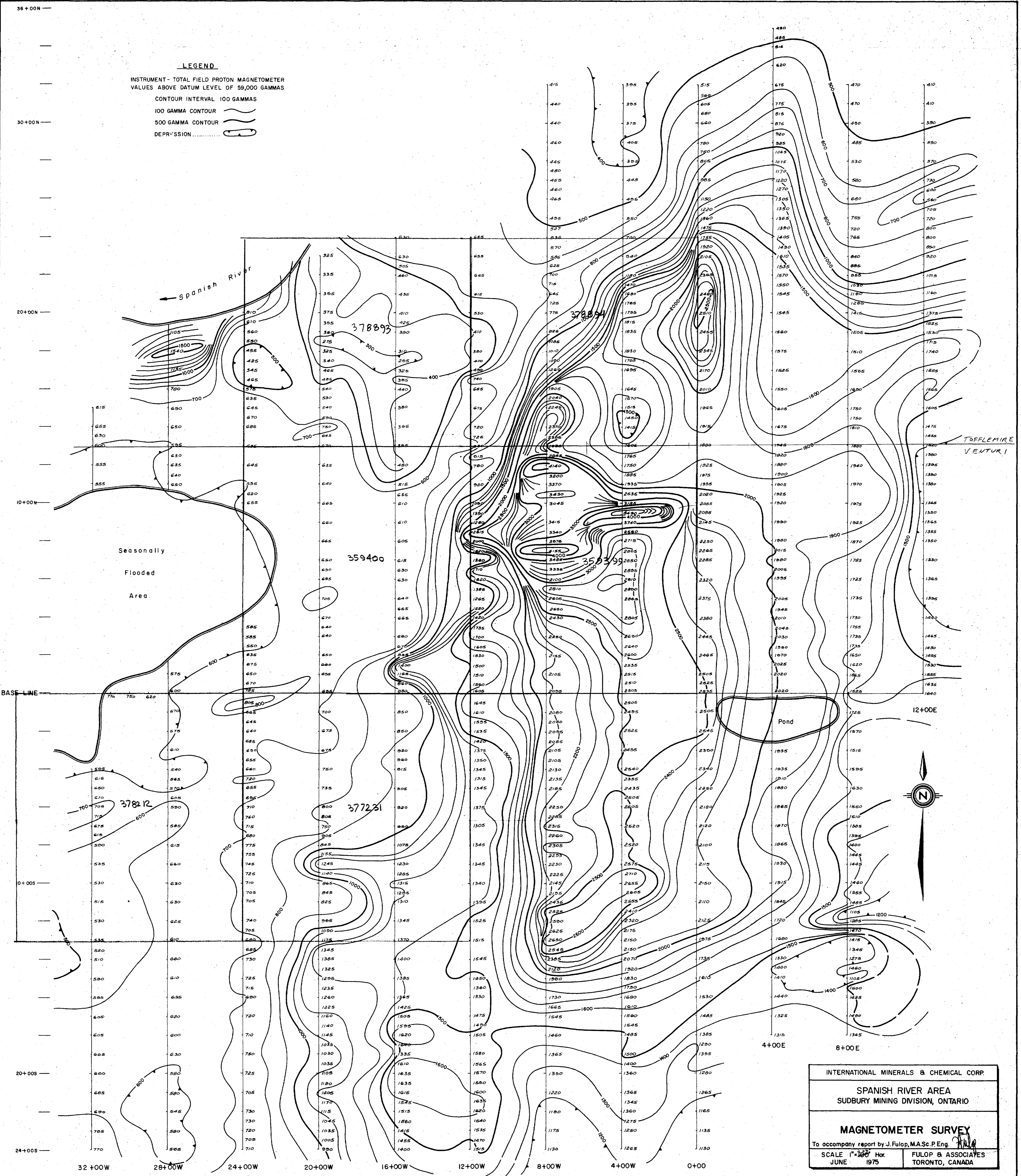
DEPRESSION 

Spanish River

Seasonally
Flooded
Area

Pond

TOFFLEMIRE
VENTURI



INTERNATIONAL MINERALS & CHEMICAL CORP.

SPANISH RIVER AREA
SUDBURY MINING DIVISION, ONTARIO

MAGNETOMETER SURVEY

To accompany report by J. Fulop, M.A.Sc. P. Eng.

SCALE 1" = 300' Hor.
JUNE 1975

FULOP & ASSOCIATES
TORONTO, CANADA

TOFFLEMIRE-0011-#7



36+00N

30+00N

20+00N

10+00N

BASE LINE

10+00S

20+00S

24+00S

LEGEND

160-T₁ 80-T₂ 40-T₃ TOTAL COUNTS PER MINUTE

Spanish River

Seasonally Flooded Area

Pond

12+00E

4+00E

8+00E

28+00W

24+00W

20+00W

16+00W

12+00W

8+00W

4+00W

0+00

378893

378894

359400

359399

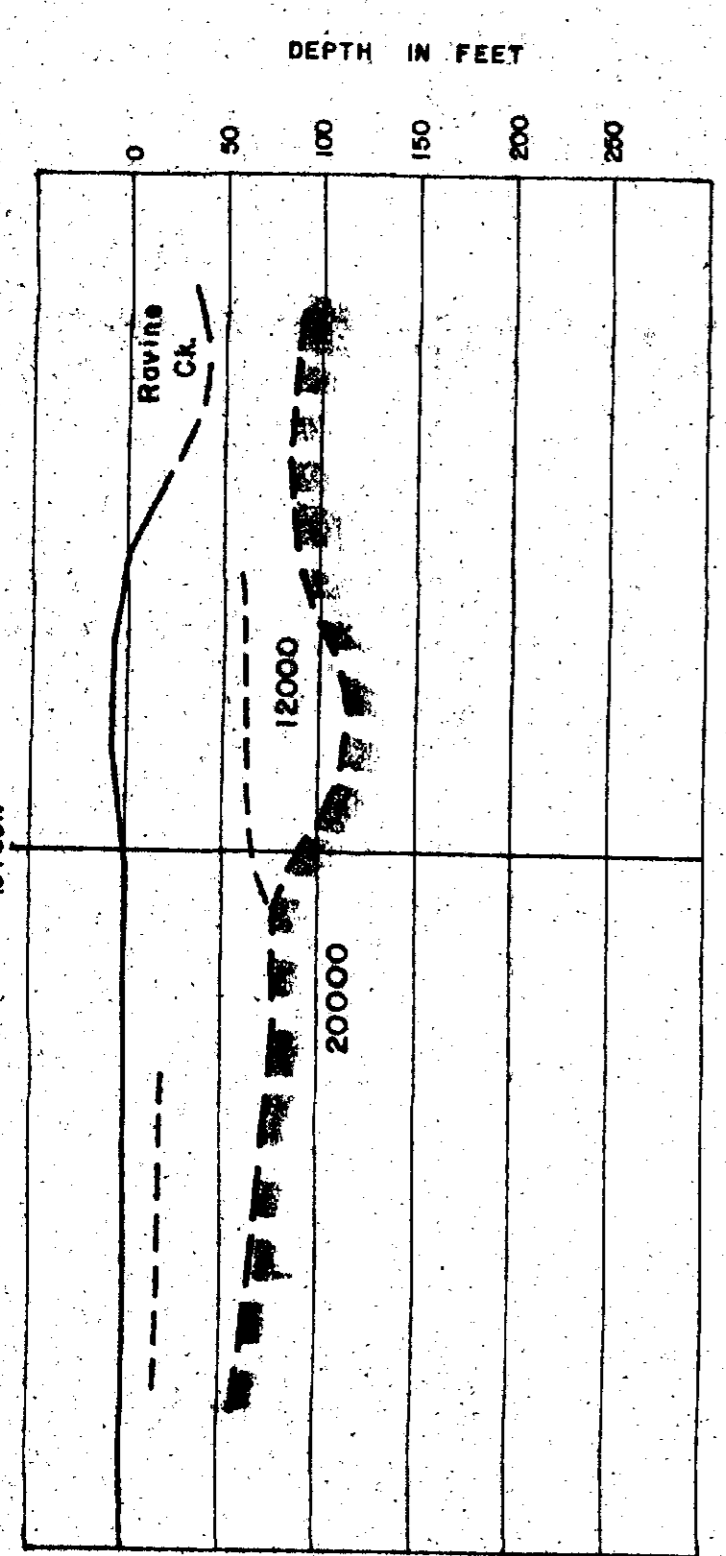
378212

377231

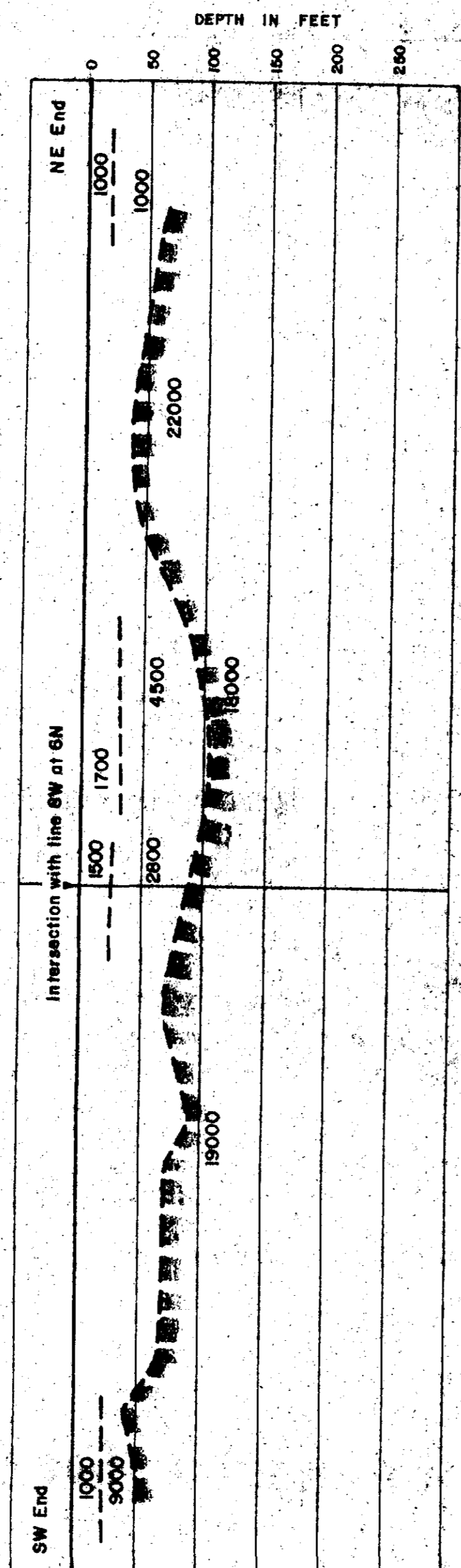
INTERNATIONAL MINERALS & CHEMICAL CORP.	
SPANISH RIVER AREA SUDBURY MINING DIVISION, ONTARIO	
RADIOMETRIC SURVEY	
To accompany report by J. Fulop, M.A.Sc., P. Eng.	
SCALE 1"=100' Hor. JUNE 1975	FULOP & ASSOCIATES TORONTO, CANADA



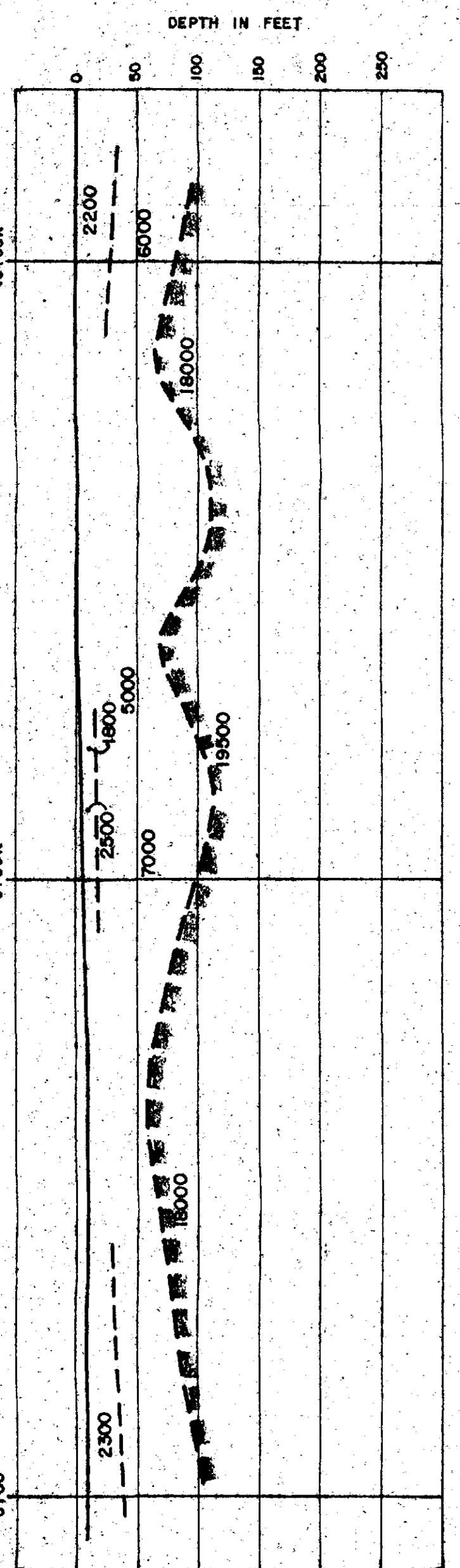
LINE 24W



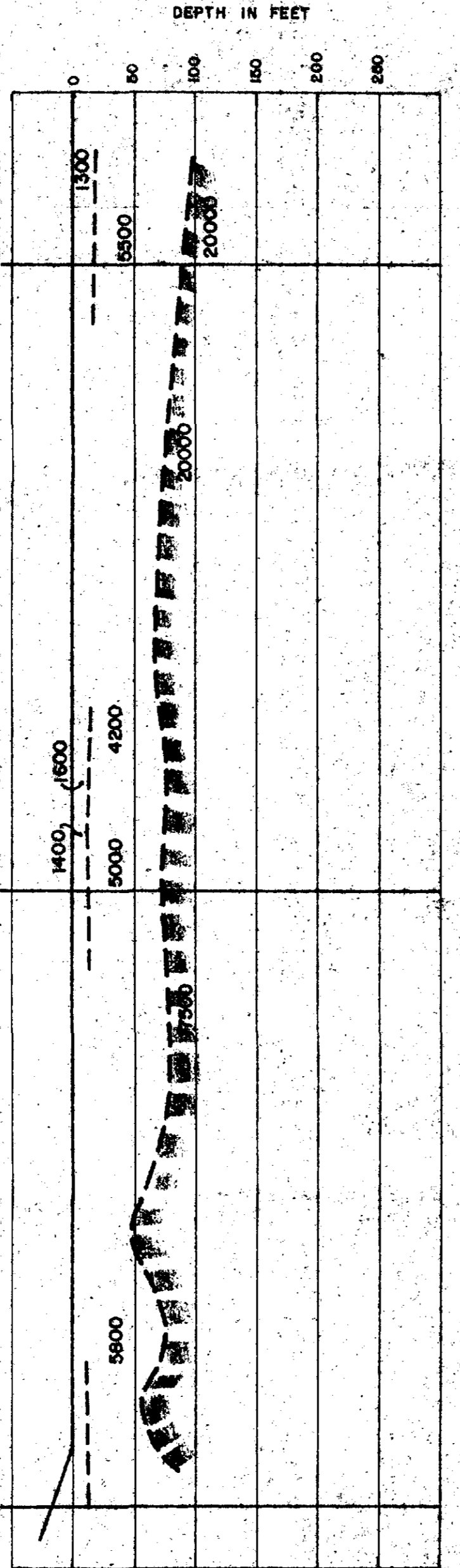
LINE ROAD



LINE 16W



LINE 20W

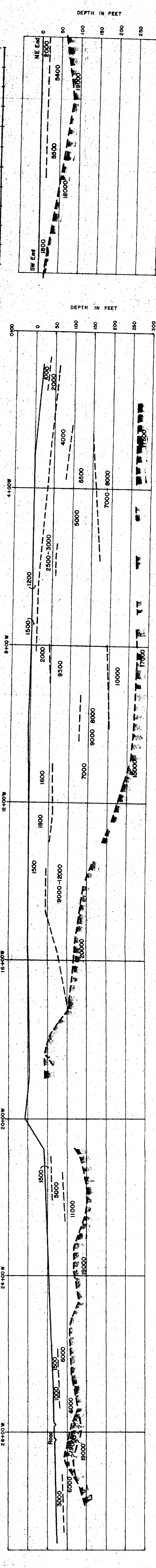


INTERNATIONAL MINERALS & CHEMICAL CORP.
SPANISH RIVER AREA
SUDBURY MINING DIVISION, ONTARIO

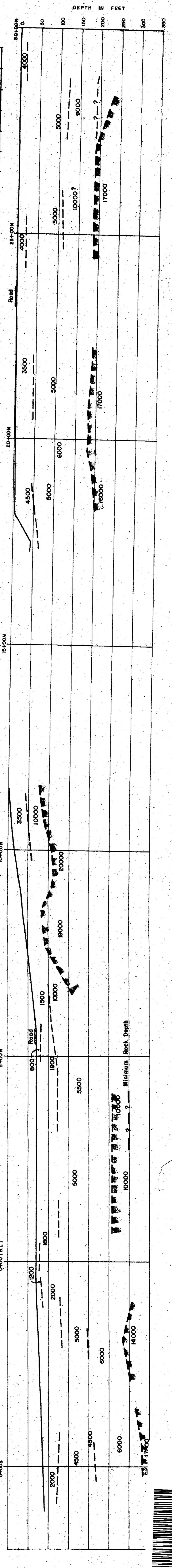
SEISMIC SECTIONS To supplement report by J. P. FULOP & P. E. WEAVER
FULOP & ASSOCIATES
TORONTO, CANADA

SCALE 1"=100' H & V
JUNE 1975

BASE LINE



LINE 8W



INTERNATIONAL MINERALS & CHEMICAL CORP.
SPANISH RIVER AREA
SUDBURY MINING DIVISION, ONTARIO

SEISMIC SECTIONS To supplement report by J. P. FULOP & P. E. WEAVER
FULOP & ASSOCIATES
TORONTO, CANADA

SCALE 1"=100' H & V
JUNE 1975