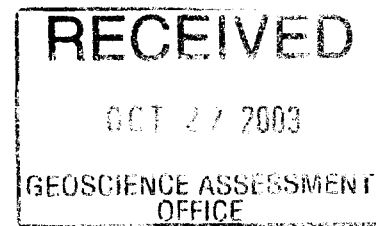


**Report on Follow-up Stripping and Trenching**  
**of Calcite Zone at Northern extent of Spanish River Carbonatite Complex**



Prepared by : Christopher M. Caron  
Operations Mgr, Agricultural Mineral Prospectors Inc.  
Prospector License #C38620  
Client #392355  
October 25, 2003



### **Introduction:**

Agricultural Mineral Prospectors Inc. (John Slack - President) currently operates a licensed quarry on the Spanish River Carbonatite Complex which produces Calcite, Apatite and Biotite for the fertilizer market. As part of our ongoing development and exploration program we have been trenching in the northern part of our claim group to try and locate economic calcite zones.

Trenching work carried out in 2002 (see work report #W0370.00171) outlined significant calcite mineralization on claim #3002843. The purpose of this years trenching and stripping was to follow-up on that work and try to get a sense of the size and character of the new calcite zone.

### **Location and Access:**

Access is by logging road (Fox Lake Road) 15 km from the Old Cartier highway. The claim group is south of the Spanish River elbow and north of Fox Lake Lodge. The complex straddles the Tofflemire / Venturi township boundary. Claim # 3002843 is located in Tofflemire twp. about 1.5 km from the AMP quarry. See Figures 1 and 2.

### **Work Details:**

The work was carried out on Saturday October 11 and Sunday October 12 by myself (C. Caron of Sudbury) and Doug Codlin of Erin, Ontario. A John Deer 310 backhoe/loader and a wheel loader with a 3.5 cu/yd capacity bucket was used to strip overburden and develop trenches.

On Saturday we chose to trench to the south and west of pre-existing trenches 01-02 and 02-02 which contained promising calcite mineralization. The topography drops down approx 3m in elevation to the south-west. We wanted to use this drop in elevation to try and develop a large vertical profile of the calcite zone. We established overburden

thickness of 0.5 to 1m using a soil auger and flagged out two perpendicular trenches at azimuths of 320 and 230 degrees. Test holes were dug with the backhoe down the slope and some small trees and stumps were removed by backhoe.

On Sunday we used a wheel loader to strip and then stockpile overburden from the areas we wished to trench. Swaths 3m wide over a combined distance of 50m were stripped. Approximately 200 cu.yds of overburden was stockpiled adjacent to the trenches.

The backhoe was used to get inside the loader trench and dig into the calcite bedrock of the 230 degree trench (TR 02-03) over a distance of 35m at a depth of 2m (see figures 3 and 4). The 320 degree trench (TR 01-03) was excavated by backhoe and loader over a distance of 15m to fully expose a 2m vertical profile of the calcite zone (see figures 5 and 6).

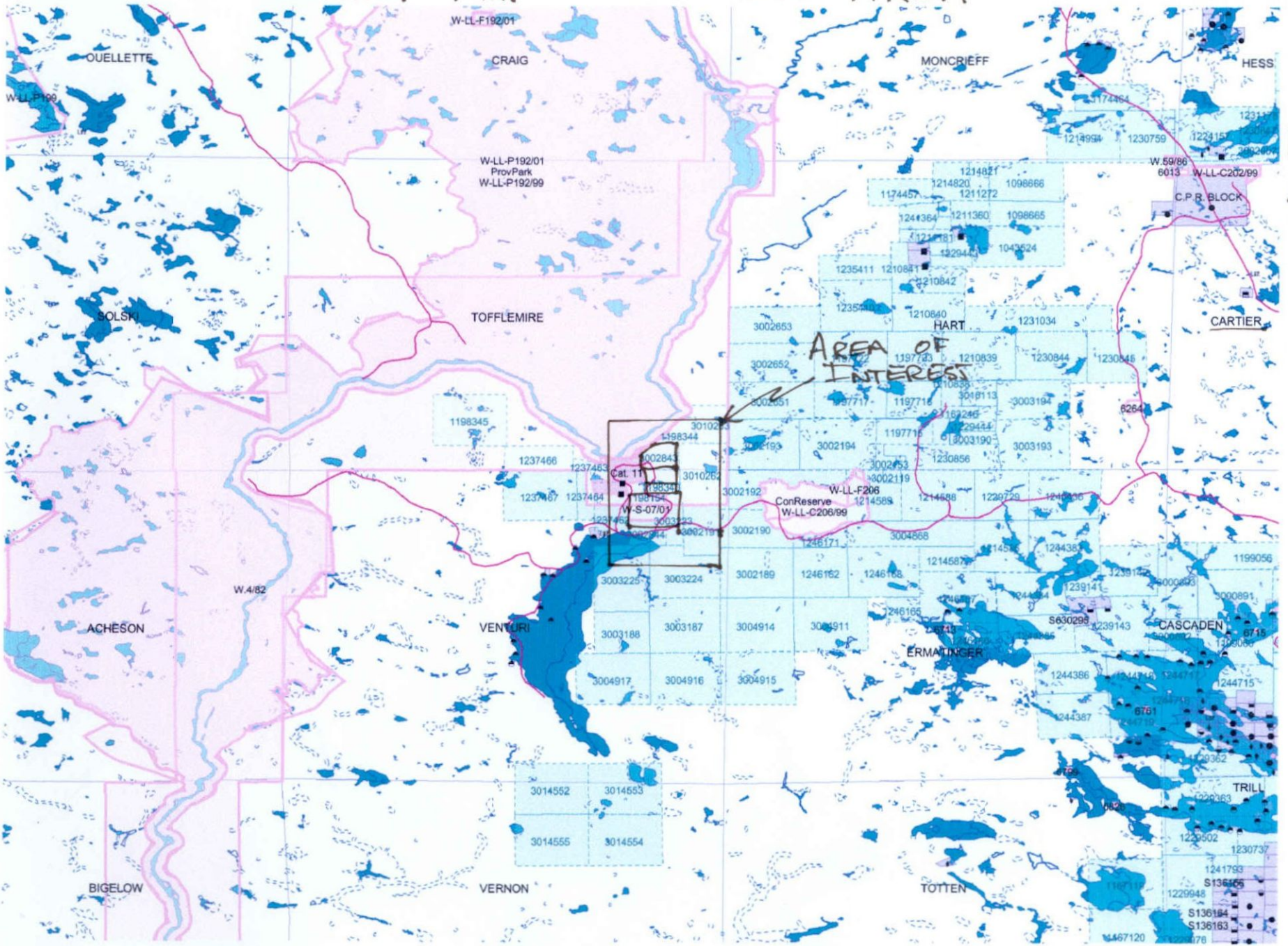
### **Results:**

Both trenches exposed continuous calcite mineralization typical of previously discovered calcite zones within the Spanish River Carbonatite Complex. Overburden thicknesses in this area are 0.5m to 1m. The calcite mineralization is characterized by vertically banded zones of 1 to 3m in width. Calcite mineralization varies from blocky calcite-altered fenite at the margins to coarse crystalline calcite with iron staining banded with albite and recrystallized (marble-like) calcite. There was no evidence of biotite. The material is weathered in-situ and is quite easily gouged where there is no calcite-altered fenite. See figures 7 and 8.

### **Conclusions:**

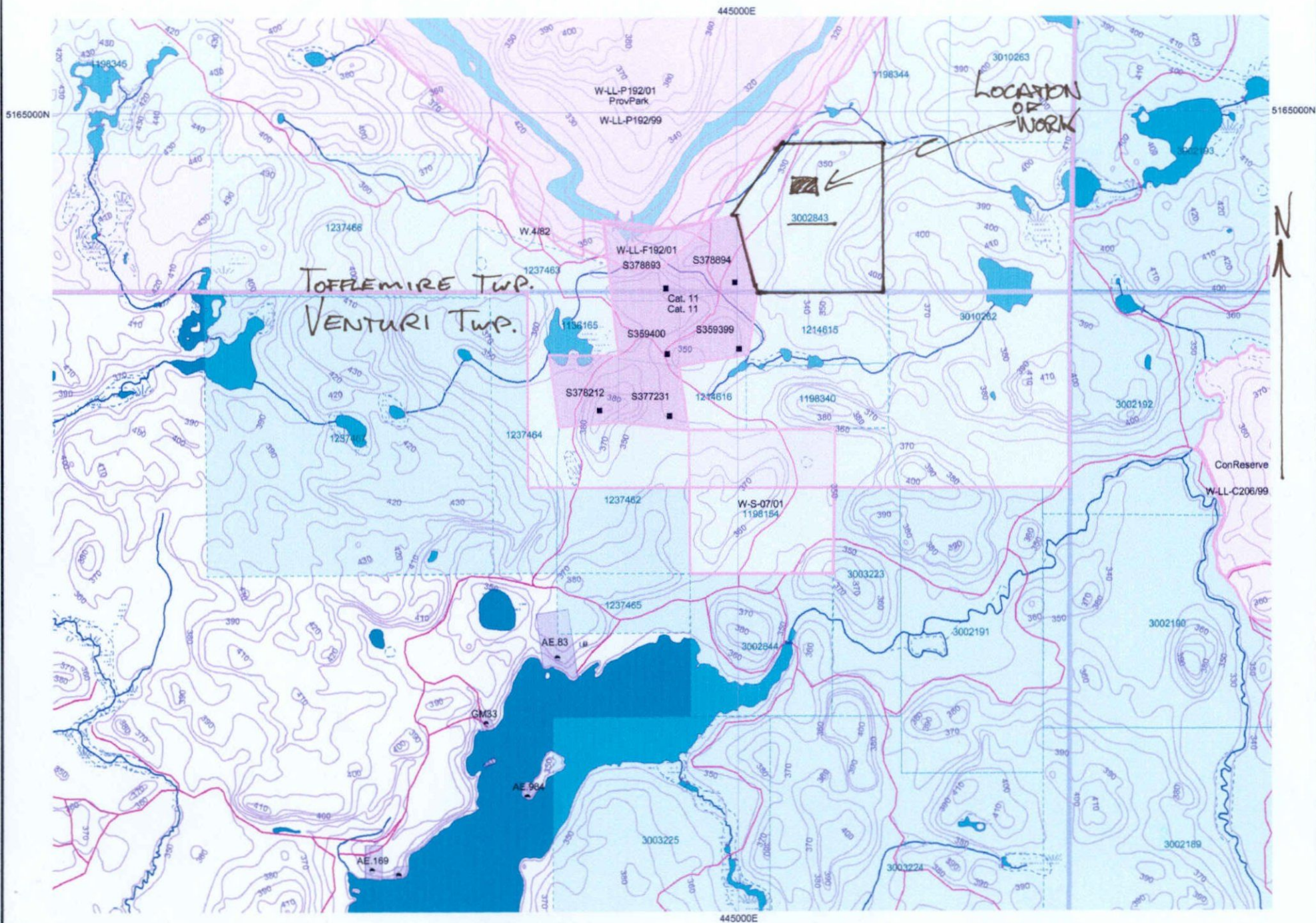
This area shows promise. We are looking for zones of coarse crystallized calcite with a minimum of accessory minerals. Further stripping and trenching should be undertaken to try and access such a zone.

# Fig 1. LOCATION MAP - CARTIER AREA



0km 5km

FIG 2 LOCATION MAP





**Figure 3** :Trench 02-03, Az.230 Deg., looking west



**Figure 4** :Trench 02-03, Az.320 Deg., looking west to bottom



**Figure 5:** Trench 01-03, Az.320 Deg., overburden stripping





**Figure 6:**Trench 01-03, Az.320 Deg., completed, looking east

Fig. 7. LOCATION OF TRENCHES.

2.26521

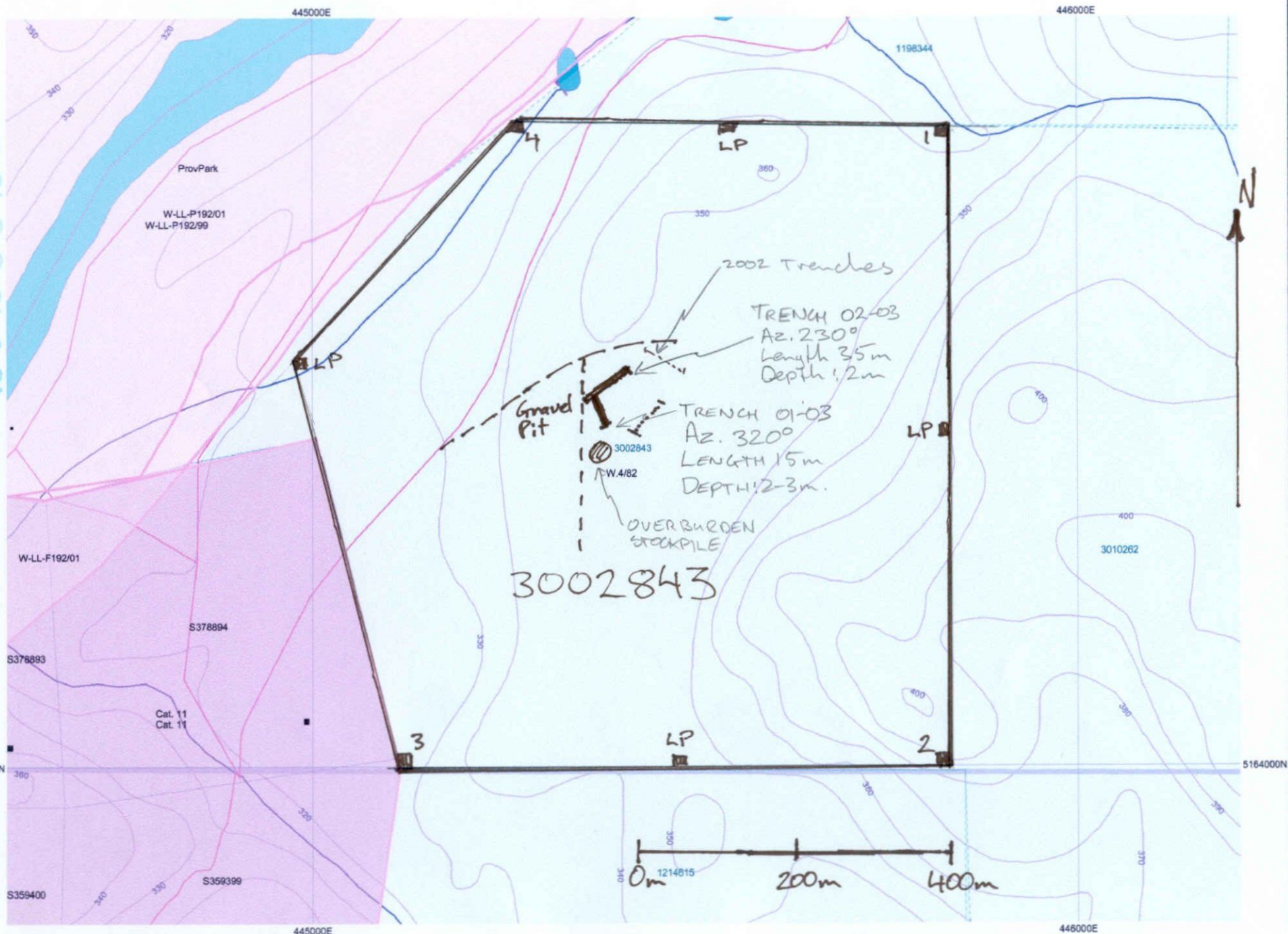
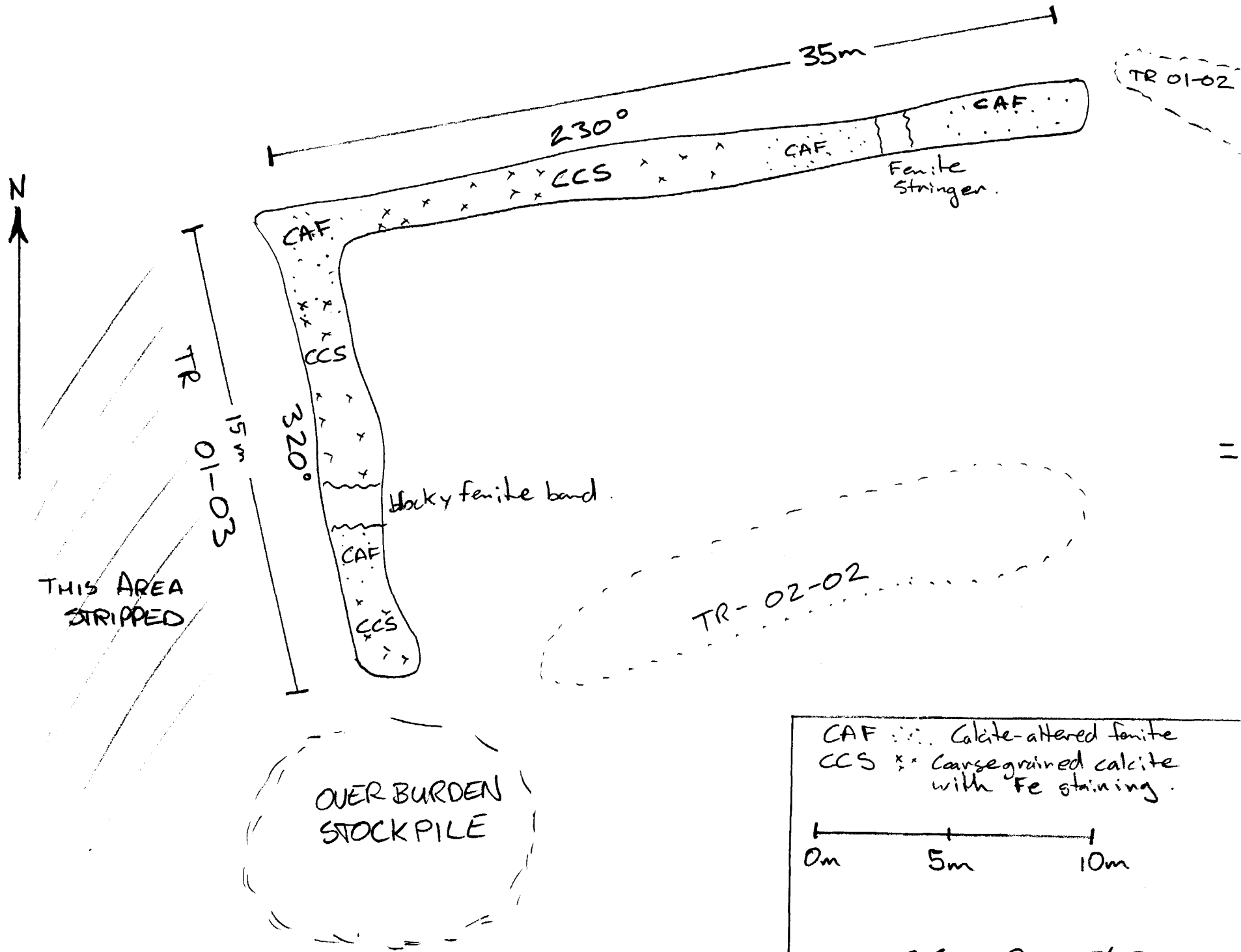


FIG. 8 - DETAIL OF TRENCHES 01-03 AND 02-03



## Work Report Summary

**Transaction No:** W0370.01679                                 **Status:** APPROVED  
**Recording Date:** 2003-OCT-27                               **Work Done from:** 2003-OCT-11  
**Approval Date:** 2003-OCT-27                               **to:** 2003-OCT-12

**Client(s):**

195010             SLACK, JOHN MALCOLM  
 393265             AGRICULTURAL MINERAL PROSPECTORS INC.

**Survey Type(s):**

PSTRIP

**Work Report Details:**

Claim#	Perform	Perform Approve	Applied	Applied Approve	Assign	Assign Approve	Reserve	Reserve Approve	Due Date
S 1198154	\$0	\$0	\$1,685	\$1,685	\$0	0	\$0	\$0	2004-OCT-26
S 3002843	\$1,685	\$1,685	\$0	\$0	\$1,685	1,685	\$0	\$0	2004-MAY-13
	<u>\$1,685</u>	<u>\$1,685</u>	<u>\$1,685</u>	<u>\$1,685</u>	<u>\$1,685</u>	<u>\$1,685</u>	<u>\$0</u>	<u>\$0</u>	

**External Credits:**                                 \$0

**Reserve:**

\$0 Reserve of Work Report#: W0370.01679

---

\$0 Total Remaining

Status of claim is based on information currently on record.



41I12NE2028 2.26521 TOPFLEMIRE

Date: 2003-OCT-30

GEOSCIENCE ASSESSMENT OFFICE  
933 RAMSEY LAKE ROAD, 6th FLOOR  
SUDBURY, ONTARIO  
P3E 6B5

AGRICULTURAL MINERAL PROSPECTORS INC.  
GENERAL DELIVERY  
ERIN, ONTARIO  
N0B 1T0 CANADA

Tel: (888) 415-9845  
Fax: (877) 670-1555

**Submission Number:** 2.26521  
**Transaction Number(s):** W0370.01679

Dear Sir or Madam

**Subject: Approval of Assessment Work**

We have approved your Assessment Work Submission with the above noted Transaction Number(s). The attached Work Report Summary indicates the results of the approval.

At the discretion of the Ministry, the assessment work performed on the mining lands noted in this work report may be subject to inspection and/or investigation at any time.

If you have any question regarding this correspondence, please contact BRUCE GATES by email at [bruce.gates@ndm.gov.on.ca](mailto:bruce.gates@ndm.gov.on.ca) or by phone at (705) 670-5856.

Yours Sincerely,



Ron C. Gashinski  
Senior Manager, Mining Lands Section

**Cc:** Resident Geologist

John Malcolm Slack  
(Claim Holder)

Agricultural Mineral Prospectors Inc.  
(Claim Holder)

Assessment File Library

Christopher Michael Caron  
(Agent)

Agricultural Mineral Prospectors Inc.  
(Assessment Office)

