



41113SE0076 0012B1 MONCRIEFF

010

Diamond Drilling


Township of Moncrief

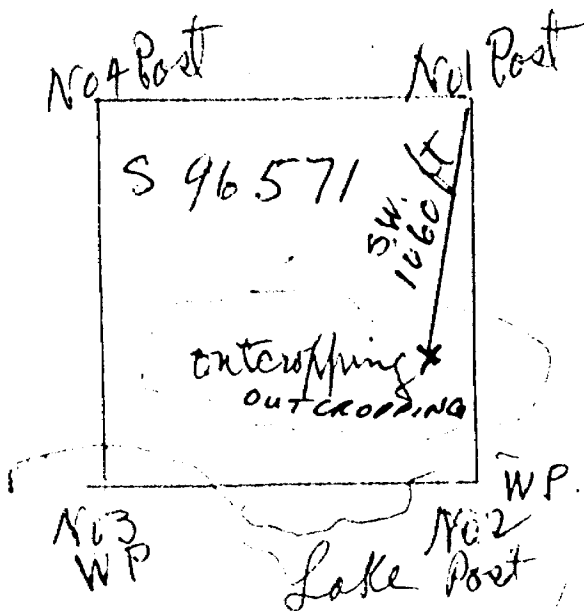
Report No: 14

Work performed by: Peter Christman

Claim No	Hole No	Footage	Date	Note
S 96571	1	38.0'	May/57	
S 97066	1	28.0'	May/57	
<i>TOTAL:</i>	<i>2 DH</i>	<i>66 FT</i>		

Notes:

Diamond  Drill Record
Manning Claim S 96571, Ronciuff Corp
Sudbury Mining Division



May 9, 1957
38 ft. Vein dip 45° S.
Drill angle 20° N
7/8" Core

Peter Christman

MAY 9/57

38 FT. VEIN DIP 45° S

DRILL \angle 20° N

7/8" CORE

P. CHRISTMAN

DIAMOND DRILL RECORD

Hole No. 1 Sheet No. 1

Property Freeman/Kreighbaum claim S97066
 Location Monaieff Tuff

Dip 45° to S Drill 20° to N

Latitude _____
 Departure _____
 Bearing _____

Elev. Collar _____
 Datum _____
 Date Started May 10/57
 Date Completed May 10/57
 Drilled by Wences Lammont
 Logged by P. Christman

Total Footage 28'

Stralok Out

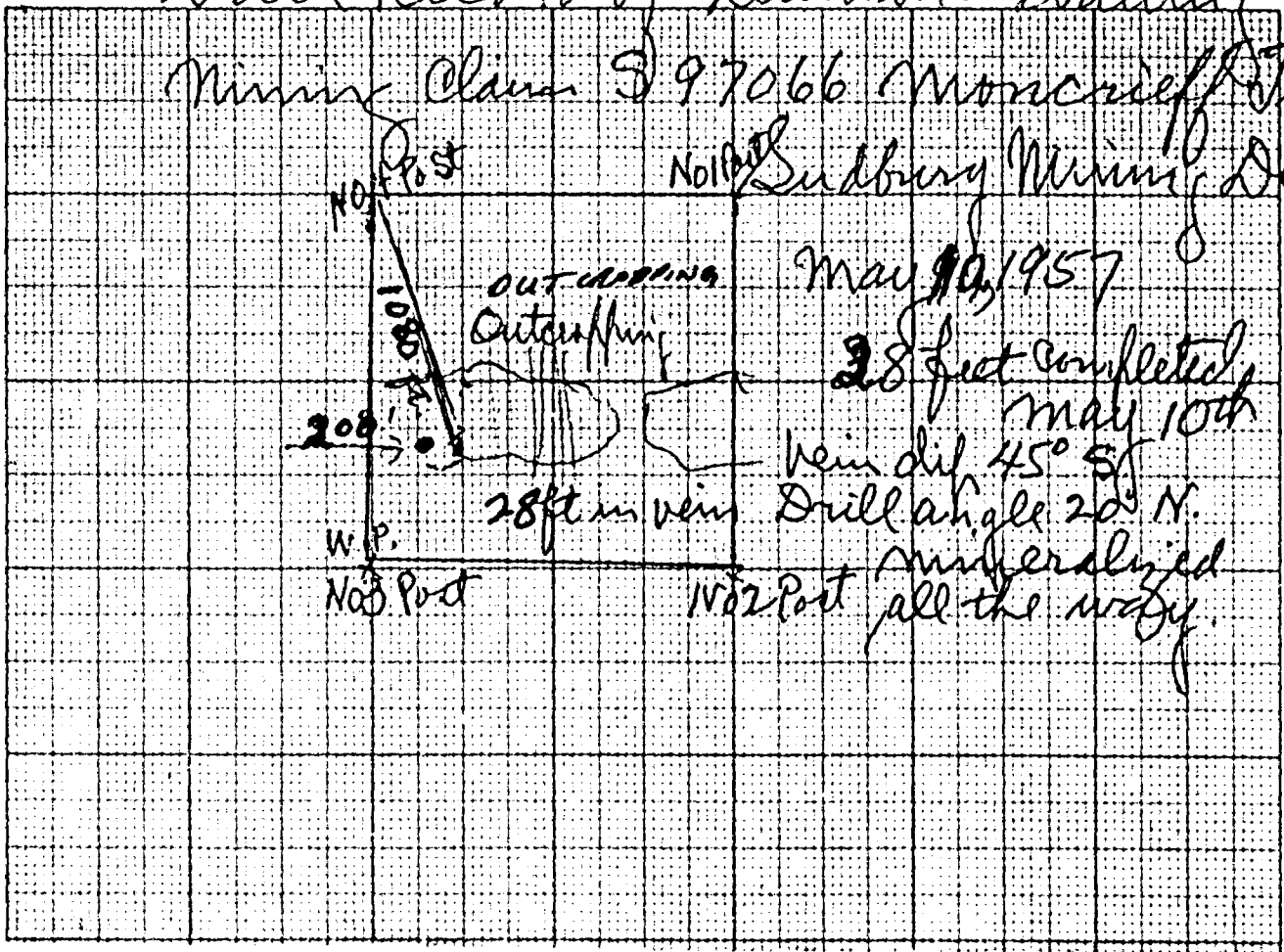
Footage		Formation	Sample Number	Sample Footage	Sample Width	Gold Sample	Gold Sludge	Remarks
From	To							
0	28	Pre Huronian PRE HURONIAN		28'	28'			Core at camp on missing claim S99352
		Vein matter full distance						
		Core Box no. 2 part No 3						
		VEIN MATTER FULL DISTANCE						
		CORE BOX NO. 2 AND						
		PART NO. 3						
								COKE AT CAMP S 99352

Date of Examination _____

Peter Christman
Stralok Out to B.P.R. Station

Drill Record of Diamond Drilling

Mining Claim 97066 Monocraft Truf
No. 1011 Sudbury Mining Division



NO. 340 20 DIETZEN GRAPH PAPER
20 X 20 PL. 7 INCH

28 FT COMPLETED

MAY 10th

VEIN DIP 45° S

DRILL \angle 20° N

MINERALIZED ALL THE WAY.

ULSTER TWP (M-1168)

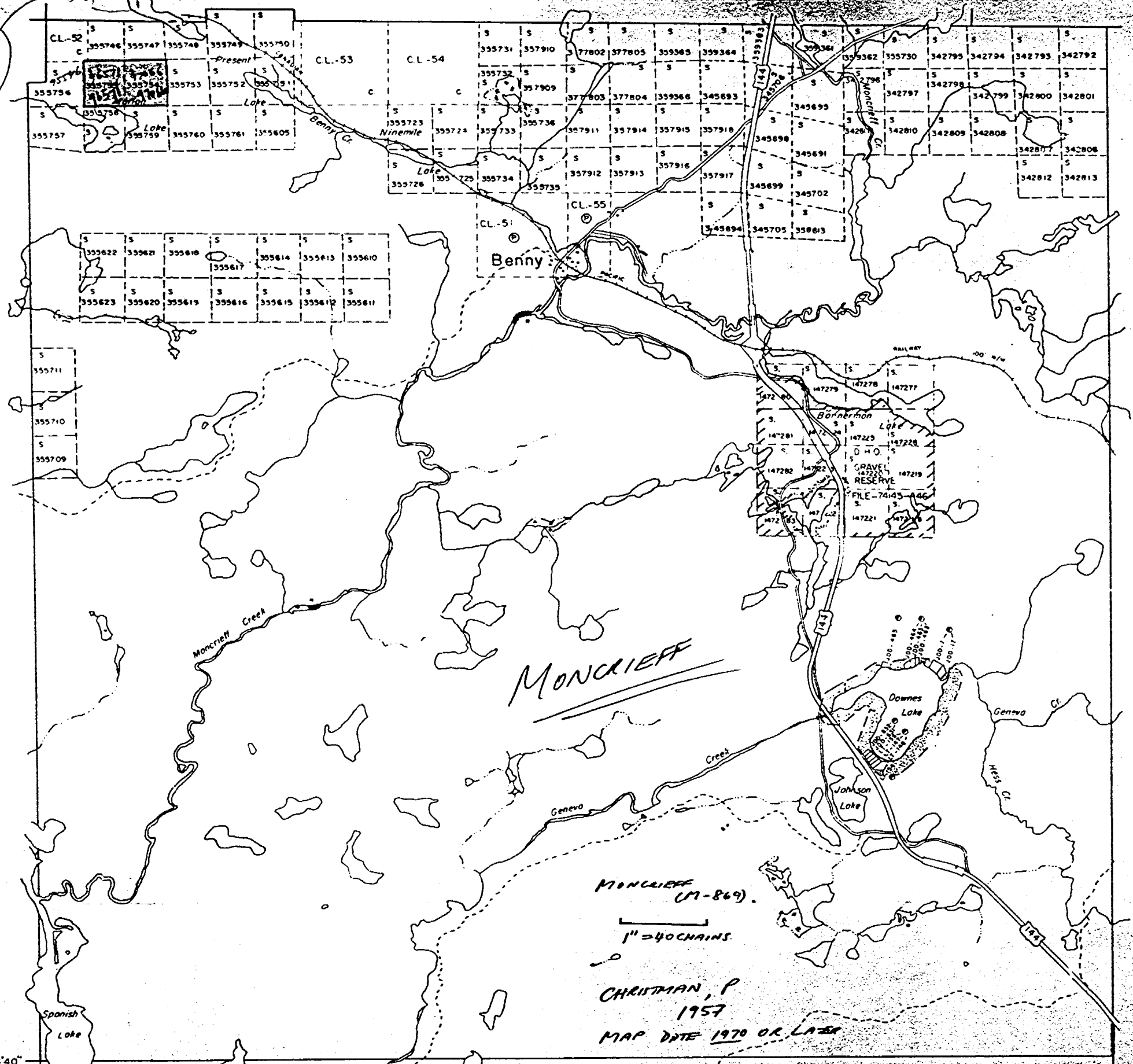
MUNSTER TWP (M-880)

(M-880)

99352

CRAIG TWP (M-736)

HESS TWP (M-930)



MONCRIEFF

MONCRIEFF (M-869)

1" = 40 CHAINS

CHRISTMAN, P
1957
MAP DATE 1970 OR LATER

HART TWP

46°44'40"
81°42'22"