



41114NE0009 0010 CREELMAN

010

Diamond Drilling

Township of CREELMAN

Report No: 10

Work performed by: MacLeod-Cockshutt Gold Mines

Claim No	hole No	Footage	Date	Note
S 73674	Boulder 1	71' ✓	July/54	
	Boulder 2	62' ✓	July/54	
S 73428	3	202'	June/54	
	11	200'	Aug/54	
	13	390'	Aug/54	
S 73490	4	201'	July/54	
	5	200'	July/54	
	6	203'	July/54	
	7	504'	July/54	
	8	200'	July/54	
	14	313'	Sept/54	
S 73427	1	200'	June/54	
	2	201'	June/54	
	9	185'	Aug/54	
	10	394'	Aug/54	
Notes:	12	109'	Aug/54	
	<u>16</u>	<u>3635</u>		

PROPERTY MacLeod-Cockshutt Gold Mines Limited

HOLE NUMBER 501124

SHEET NUMBER

SECTION FROM TO

DIAMOND DRILL RECORD

LOCATION: LAT. Claim S. 73674
 DEP. 17' W of Boulder
 ELEVATION OF COLLAR _____
 DATUM _____
 DIRECTION AT START: BEARING N83°E
 DIP 45°

STARTED July 17/54
 COMPLETED 18/54
 ULTIMATE DEPTH 71'
 PROPOSED DEPTH 70'

DEPTH FEET	FORMATION	SAMPLE NO.	WIDTH OF SAMPLE	GOLD \$	SLUDGE GOLD \$		
0' - 6.2'	Casing						
6.2' - 32.9'	Coarse arkosic greywacke (6.7' - 6.9' for .2' reads 29 due to 1" fine bedded dark greywacke which pinches out in thickness of core)				Reading	12-17	
32.9' - 71'	Arkosic greywacke, chloritic				"	10-12	
	Background 6 - 8						
	Core recovery complete						

DRILLED BY _____

SIGNED George Walker

PROPERTY MacLeod-Cockshutt Gold Mines Ltd. Anstice, Ont.

DIAMOND DRILL RECORD

HOLE NUMBER _____
 SHEET NUMBER _____
 SECTION FROM _____

LOCATION: LAT Claim S. 73674
 DEP. 17' W. of Boulder. Same set
 ELEVATION OF COLLAR up as of Boulder No. 1
 DATUM _____
 DIRECTION AT ST..RT: BEARING N44.0°E
 DIP 45°

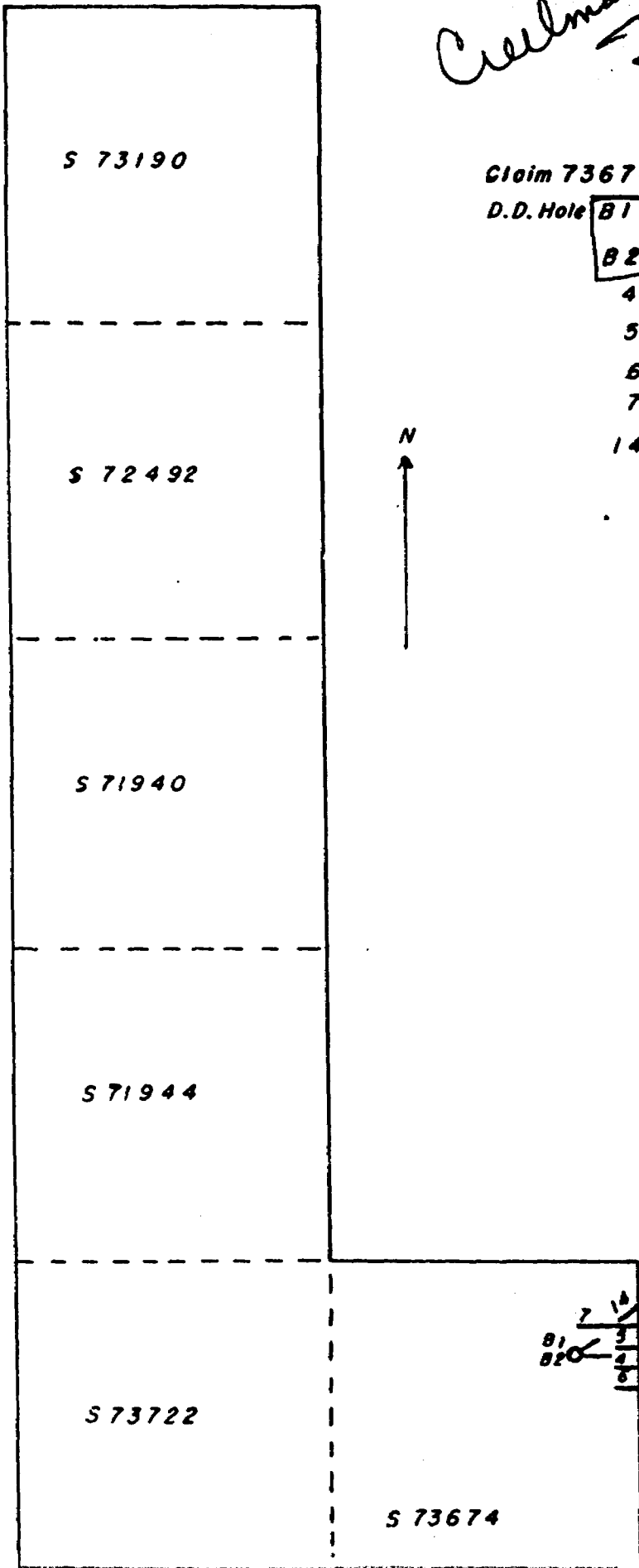
STARTED July 18/54
 COMPLETED " 19/54
 ULTIMATE DEPTH 62'
 PROPOSED DEPTH 60'

DEPTH FEET	FORMATION	SAMPLE NO.	WIDTH OF SAMPLE	GOLD %	SLUDGE GOLD %		
0' - 6'	Casing						
6' - 25.7'	Arkosic quartzite, coarse				Reading	12-14	
25.7' - 62'	" greywacke, chloritic				"	12-13	
	Lost core 20.5' - 21.3' .8'						
	Background 6 - 8						
	Core recovery 98.5%						

DRILLED BY _____

SIGNED George Miller

*Cushman
Trust*



S 73190

S 72492

S 71940

S 71944

S 73722

N
↑

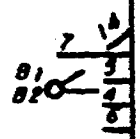
Claim 73674

D.D. Hole

B1	71
B2	62

4 71'
5 70'
6 73'
7 374'

14 129' 850'



S 73674

PROPERTY MacLead-Cockshutt G.M. Instice, Ont.

HOLE NUMBER

SHEET NUMBER

SECTION FROM TO

DIAMOND DRILL RECORD

LOCATION: LAT. Claim S.73428 50°N of No. 1
 DEP. _____
 ELEVATION OF COLLAR _____
 DATUM _____
 DIRECTION AT START: BEARING W.
 DIP 45°

STARTED June 29/54
 COMPLETED July 1/54
 ULTIMATE DEPTH 202'
 PROPOSED DEPTH 200'

DEPTH FEET	FORMATION	SAMPLE No.	WIDTH OF SAMPLE	GOLD \$	SLUDGE GOLD \$		
0'-10'	Casing			U ₂ O ₈			
10'-15'	Blaty green graywacke	925	5'	"	Reading	10-20	
15'-20'	" " "	976	5'	"	"	10-20	
20'-25'	" " "	977	5'	"	"	10-20	
25'-35'	25'-30' Fine Grained Bedded 30-32.5' " "	984 985	5' 2.5'	"	"	5-10	
35'-40'	" " "	978	5'	"	"	20-30	
40'-45'	" " "	979	5'	"	"	10-20	
45'-50'	" " "	980	5'	"	"	10-20	
50'-55'	" " "	981	5'	"	"	20-30	
55'-60'	" " "	982	5'	"	"	20-30	
60'-65'	" " "Reading 80-300 @ 63'-64"	983	5'	"	"	20-30	
65'-70'	" " "	984	5'	"	"	10-20	
70'-75'	Quartzite					5-10	
75'-202'	"		Same as background			5-6	
	Background 5-6 ore recovery - complete						

NORTHERN MINER PRESS LIMITED, TORONTO - STOCK FORM No 501 REV. 9/44

DRILLED BY

SIGNED *George Miller*

DIAMOND DRILL RECORD

PROPERTY MacLeod-Cockshutt Gold Mines, Anstice, Ont HOLE NO. 11

SHEET NUMBER <u>1</u>	SECTION FROM _____ TO _____	STARTED <u>Aug. 20/54</u>
LATITUDE <u>Claim S 73428</u>	DATUM _____	COMPLETED <u>" 22/54</u>
DEPARTURE <u>62' N of 3</u>	BEARING <u>W</u>	ULTIMATE DEPTH <u>200'</u>
ELEVATION _____	DIP <u>45°</u>	PROPOSED DEPTH _____

DEPTH FEET	FORMATION	SAMPLE NO.	WIDTH OF SAMPLE	GOLD g	SLUDGE GOLD g
0'-20.0'	Casing				
20.0'-107.0'	Graywacke, fine grained with trace of fine bedding or drag folds at 24'-25', 40'-41', 75'-77.5' few arkosic graywacke layers 25'-50'.				
107.0'-120.5'	Quartzite				
120.5'-129.0'	Graywacke, chloritic				
129.0'-135.0'	Arkosic graywacke, medium to coarse				
135.0'-148.0'	Conglomerate				
148.0'-152.5'	Graywacke, few rusty seams				
152.5'-155.0'	" finely bedded, few tiny X faults				
155.0'-165.0'	" 162'-163' trace of fine bedding				
165.0'-190.0'	" medium to slightly arkosic				
190.0'-195.0'	" irregular fine bedding				
195.0'-200.0'	" medium grained				
	End of Hole				

N.M.P., TORONTO-STOCK FORM NO 101 REV 12/51

DRILLED BY _____

SIGNED *George Miller*

PROPERTY MacLeod-Cockshutt Gold Mines, Anstice, Ont.

HOLE NUMBER: 13

SHEET NUMBER: 1

SECTION FROM _____ TO _____

DIAMOND DRILL RECORD

LOCATION: LAT. Claim S 73428
 DEP. 186' N and 70' W of 11

ELEVATION OF COLLAR _____

DATUM _____

DIRECTION AT START: BEARING 845°W
 DIP 45°

STARTED Aug. 29/54

COMPLETED " 31/54

ULTIMATE DEPTH 390'

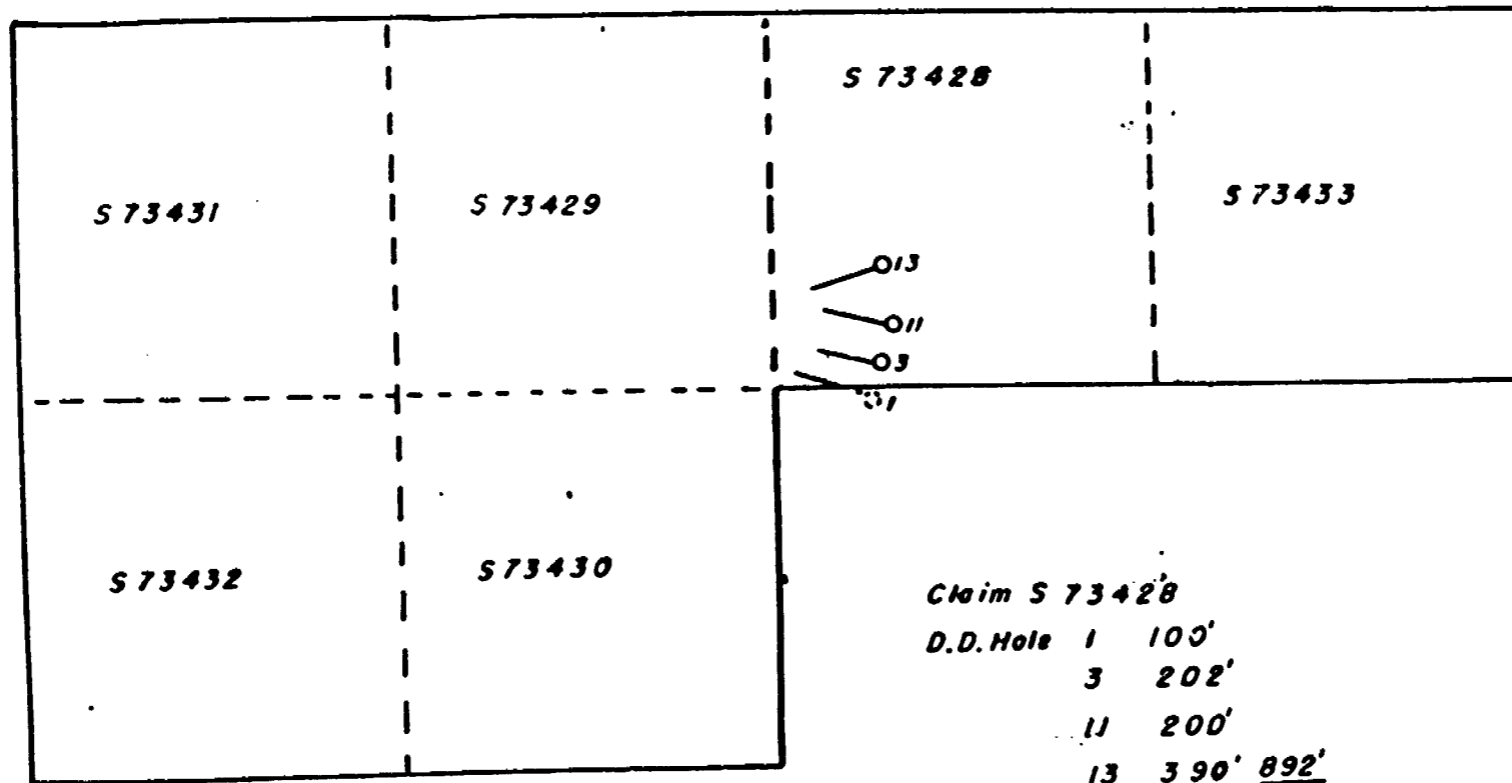
PROPOSED DEPTH _____

DEPTH, FEET	FORMATION	SAMPLE No.	WIDTH OF SAMPLE	GOLD \$	SLURRY GOLD \$
0'-15.0'	Casing				
15.0'-240.0'	Greywacke				
	75.0'-100' Occasional traces of fine bedding				
240.0'-243.6'	Quartzite				
243.6'-260.0'	Greywacke				
260.0'-265.0'	Conglomerate				
265.0'-366.0'	Greywacke				
366.0'-390'	Quartzite				
	End of Hole				

NORTHERN MINER PRESS LIMITED, TORONTO—STOCK FORM NO. 801 REV. 8/44

DRILLED BY _____

SIGNED Lance Miller



PROPERTY MacLeod-Cockshutt Gold Mines Ltd. Anstice, Ont

HOLE NUMBER

SHEET NUMBER

SECTION FROM

TO

DIAMOND DRILL RECORD

LOCATION: LAT. Claim S.73490
 DEP. _____
 ELEVATION OF COLLAR _____
 DATUM _____
 DIRECTION AT START: BEARING W
 DIP 45°

STARTED July 8/54
 COMPLETED " 9/54
 ULTIMATE DEPTH 201'
 PROPOSED DEPTH 200'

DEPTH FEET	FORMATION	SAMPLE NO.	WIDTH OF SAMPLE	GOLD S	SLUDGE GOLD S		
0' - 31'	Casing						
31' - 35'	Fine grained, arkosic greywacke				Reading	5-	10
35' - 50'	" " " "				"	5-	10
50' - 59'	" " " "				"	5-	10
	56.4' - 56.9' Lost Core .5'						
59' - 75'	Arkosic quartzite, coarse				"	5-	10
75' - 100'	Alternate narrow bands of greywacke, quartzite and pebbly quartz conglomerate				"	5-	10
	92.7' - 93.3' Lost core .6'						
100' - 106.3'	Arkosic greywacke " " 104.0'-104.5' .5'				"	5-	10
106.3-172'	Fine grained greywacke				"	5-	10
	Lost core 106.7'-107.4' .7'						
172' - 178.3'	Arkosic, pink quartzite				"	5-	10
178.3-180.5'	Chloritic greywacke				"	5-	10
180.5-201'	Arkosic Quartzite, coarse				"	5-	10
	End of Hole						
	No samples split in this hole						
	Scintillator Background 5 - 6						
	Core Recovery 98.8%						

NORTHERN MINER PRESS LIMITED, TORONTO - STOCK FORM NO. 501 REV. 9.44

DRILLED BY

SIGNED

George Miller

PROPERTY MacLeod-Cockshutt Gold Mines Ltd. Anstice, Ont

HOLE NUMBER _____
 SHEET NUMBER _____
 SECTION FROM _____ TO _____

DIAMOND DRILL RECORD

LOCATION: LAT Claim S. 73490 50' N of 4
 DEP. _____
 ELEVATION OF COLLAR _____
 DATUM _____
 DIRECTION AT START: BEARING N
 DIP 45°

STARTED July 11/54
 COMPLETED " 13/54
 ULTIMATE DEPTH 200'
 PROPOSED DEPTH 200'

DEPTH FEET	FORMATION	SAMPLE NO.	WIDTH OF SAMPLE	GOLD S	SLURRY GOLD	
0'-20'	Casing			11.0		
20'-25.3'	arkosic Quartzite, coarse			3.8	Reading	5-10
25.3'-29.0'	Chloritic greywacke				"	5-10
29.0'-35.0'	Arkosic conglomerate	987	6'		"	10-25
35.0'-40.0'	" "	988	5'		"	10-25
40.0'-45.0'	" "	989	5'		"	10-25
45.0'-50.0'	" "	990	5'		"	10-25
50.0'-55.0'	" "	991	5'		"	10-25
55.0'-60.0'	" "	992	5'		"	10-25
60.0'-65.0'	" "	993	5'		"	10-25
65.0'-70.0'	" "	994	5'		"	10-15
70.0'-75.0'	" "	995	5'		"	10-15
75.0'-84.3'	" "					5-10
84.3'-87.8'	" "	996	3.5'		"	10-25
87.8'-93.7'	" "				"	10-15
93.7'-100'	" Greywacke				"	5-10
100.0'-105'	" conglomerate				"	5-15
105.0'-110'	" "				"	5-10
110.0'-115'	" "				"	5-15
115.0'-120'	" " 118.4'-118.7' Chloritic greywacke (reading 30-40)				"	5-10

NORTHERN MINES PRESS LIMITED, TORONTO - STOCK FORM NO. 801 REV. 9/44

DRILLED BY _____

SIGNED _____

George H. Miller

PROPERTY MacLeod-Cockshutt Gold Mines Ltd. Anstice, Ont

HOLE NUMBER _____

SHEET NUMBER _____

SECTION FROM _____ TO _____

DIAMOND DRILL RECORD

LOCATION: LAT. Claim S.73A90 50' N of L
 DEP. _____
 ELEVATION OF COLLAR _____
 DATUM _____
 DIRECTION AT START: BEARING _____
 DIP 45°

STARTED July 11/54
 COMPLETED " 13/54
 ULTIMATE DEPTH 200'
 PROPOSED DEPTH 200'

DEPTH FEET	FORMATION	SAMPLE NO.	WIDTH OF SAMPLE	GOLD g	SLUDGE GOLD g		
120.0'-134'	arkosic Conglomerate				Reading	5	15
134.0'-190.6'	" greywacke				"	5	10
190.6'-200'	" Quartzite				"	5	10
	Scintillator background					5	6
	Core recovery complete						

DRILLED BY _____

SIGNED _____

George Miller

PROPERTY MacLeod-Cockshutt Gold Mines Ltd. Anstice, Ont.

HOLE NUMBER

SHEET NUMBER

SECTION FROM

DIAMOND DRILL RECORD

LOCATION: LAT. Claim S. 73490
 DEP. 50' S of No. 4
 ELEVATION OF COLLAR _____
 DATUM _____
 DIRECTION AT START: BEARING W
 DIP 45°

STARTED July 15/54
 COMPLETED " 17/54
 ULTIMATE DEPTH 203'
 PROPOSED DEPTH 200'

DEPTH FEET	FORMATION	SAMPLE NO.	WIDTH OF SAMPLE	GOLD \$	SLUDGE GOLD \$	
0'-30'	Casing					
30'-50.9'	Arkosic quartzite (most of core blocky)				Reading	8-12
50.9'-58.6'	" greywacke				"	10-15
58.6'-67.2'	Conglomerate				"	12-18
67.2'-83.1'	Arkosic greywacke				"	9-18
83.1'-118.0'	" " containing narrow bands of quartzite				"	8-15
	Lost core 79.5' - 80.0' .5'					
	" " 88.3' - 88.8' .5'					
	" " 92.5' - 93.3' .8'					
118.0'-139.0'	Arkosic quartzite				"	8-14
139.0'-146.3'	" greywacke				"	8-15
146.3'-149.6'	" quartzite				"	8-13
149.6'-187.5'	" greywacke				"	8-12
187.5'-203.0'	" Quartzite				"	8-12
	Background 8 - 10					
	Core recovery 99.1%					

NORTHERN MINER PRESS LIMITED, TORONTO-STOCK FORM NO 901 REV 9-44

DRILLED BY

SIGNED

George Miller

DIAMOND DRILL RECORD

PROPERTY MacLeod-Cockshutt Gold Mines, Anstice, Ont HOLE NO. 7

SHEET NUMBER 1 SECTION FROM _____ TO _____ STARTED July 22/54
 LATITUDE Claim 73490 DATUM _____ COMPLETED " 27/54
50' N of 5
 DEPARTURE _____ BEARING W" ULTIMATE DEPTH 504'
 ELEVATION _____ DIP 45° PROPOSED DEPTH 500'

DEPTH FEET	FORMATION	SAMPLE NO.	WIDTH OF SAMPLE	GOLD \$	SLUDGE GOLD \$	
0' - 22.0'	Casing					
22.0' - 22.8'	Quartzite					
22.8' - 25.5'	Conglomerate					
25.5' - 150.0'	Greywacke					
150.0' - 162.7'	Arkosic quartzite					
162.7' - 205.0'	" greywacke, chloritic					
205.0' - 236.0'	" quartzite					
236.0' - 265.5'	" greywacke					
265.5' - 282.3'	" quartzite, coarse, greenish					
282.3' - 594.0'	" granite " light colored					
	Core recovery 99.4%					
	Dip test @ 400' 40°					

DRILLED BY _____

SIGNED George Walker

DIAMOND DRILL RECORD

PROPERTY MacLeod-Gockshutt Gold Mines, Anstice, Ont MOLE NO. 8

SHEET NUMBER 1

SECTION FROM _____ TO _____

STARTED July 28/54

LATITUDE Claim S 73490
140' E of 5

DATUM _____

COMPLETED Aug. 1 /54

DEPARTURE _____

BEARING W

ULTIMATE DEPTH 200'

ELEVATION _____

DIP 450

PROPOSED DEPTH 200'

DEPTH FEET	FORMATION	SAMPLE NO.	WIDTH OF SAMPLE	GOLD \$	SLUDGE GOLD \$		
<u>0' - 6.0'</u>	<u>Casing</u>						
<u>6.0' -11.8'</u>	<u>Arkosic greywacke</u>						
<u>11.8' -40.7'</u>	<u>" quartzite</u>						
<u>40.7' -67.6'</u>	<u>" greywacke</u>						
<u>67.6' -200.0'</u>	<u>" quartzite</u>						
	<u>Core recovery 98.0%</u>						

N.M.P. TORONTO-STOCK FORM NO 501 REV 12/51

DRILLED BY

SIGNED *George Miller*

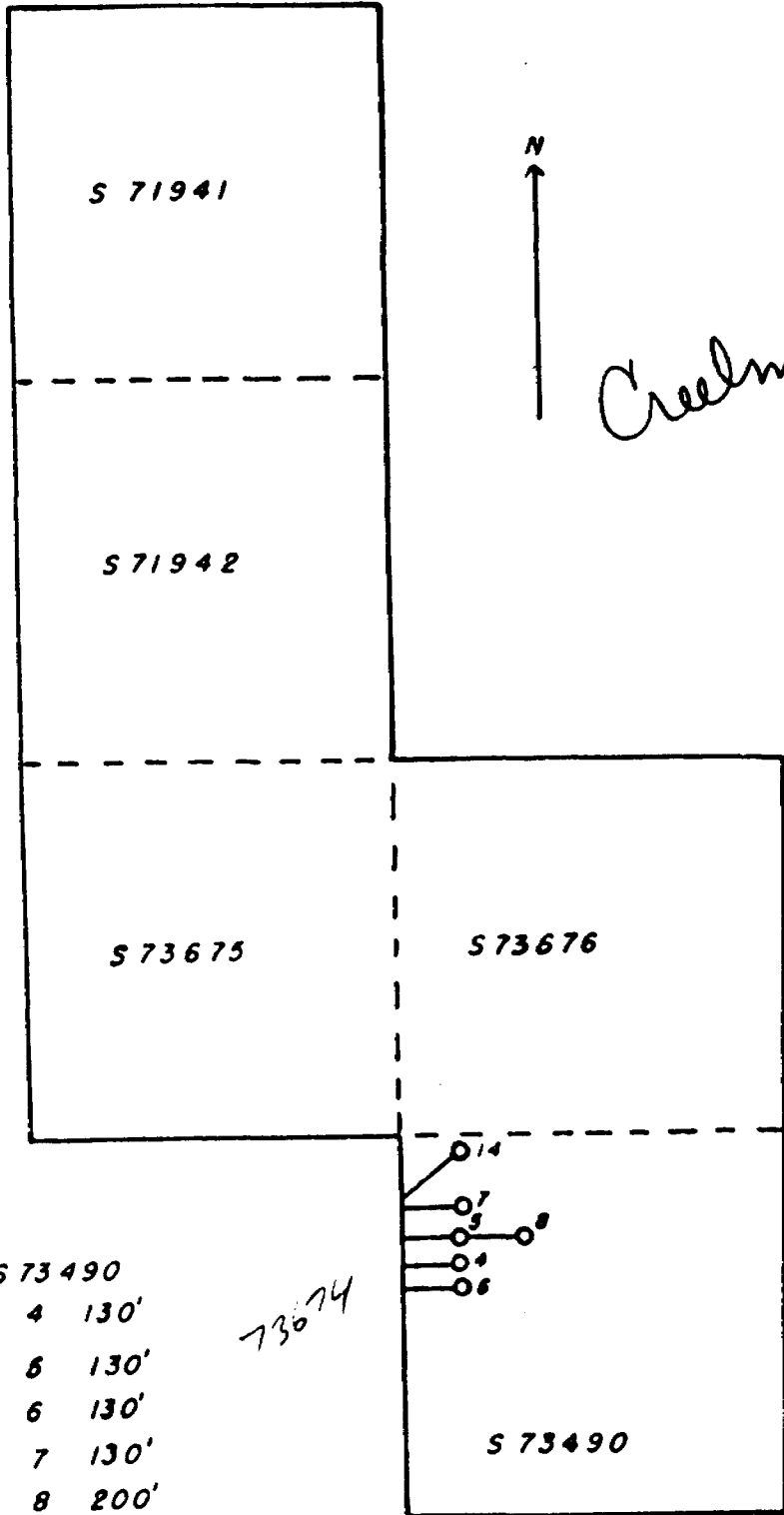
DIAMOND DRILL RECORD

PROPERTY MacLeod-Cockshutt Gold Mines, Anstice, Ont HOLE NO. 1A

SHEET NUMBER <u>1</u>	SECTION FROM _____ TO _____	STARTED <u>Sept. 4/54</u>
LATITUDE <u>Claim S 73490</u>	DATUM _____	COMPLETED <u>" 7/54</u>
DEPARTURE <u>173' N of 7</u>	BEARING <u>S45°W</u>	ULTIMATE DEPTH <u>313'</u>
ELEVATION _____	DIP <u>45°</u>	PROPOSED DEPTH _____

DEPTH FEET	FORMATION	SAMPLE NO.	WIDTH OF SAMPLE	GOLD \$	SLUDGE GOLD \$		
0' - 22.0'	Casing						
22.0' - 78.0'	Greywacke						
78.0' - 100.5'	Sparse conglomerate						
100.5' - 125.0'	Greywacke						
125.0' - 157.0'	" arkosic						
157.0' - 200.0'	Conglomerate						
200.0' - 250.0'	Greywacke						
250.0' - 275.0'	Greywacke, slaty green						
275.0' - 313.0'	Quartzite.						
	End of Hole						

Handwritten signature



Claim S 73490
 D.D. Hole 4 130'
 6 130'
 6 130'
 7 130'
 8 200'
 14 184' 904'

73674

Note These holes continue
 on Claim S 73674

PROPERTY MacLeod-Cockshutt Gold Mines, Antice, Ont.

HOLE NUMBER _____

SHEET NUMBER 1

DIAMOND DRILL RECORD

SECTION FROM _____ TO _____

LOCATION: LAT. Claim S. 73427
 DEP. _____
 ELEVATION OF COLLAR _____
 DATUM _____
 DIRECTION AT START: BEARING W
 DIP 45°

STARTED June 25/54
 COMPLETED " 27/54
 ULTIMATE DEPTH 200'
 PROPOSED DEPTH 200'

DEPTH FEET	FORMATION	SAMPLE NO.	WIDTH OF SAMPLE	GOLD \$	SLUDGE GOLD \$		
0'-9'	Casing			U			
9'-15'	Slaty green greywacke	901	6'	"	Reading	10-20	
15'-20'	" " "	902	5'	"	"	10-20	
20'-25'	" " " Reading 30 @ 22.1'-23.0'	903	5'	"	"	10-20	
25'-30'	" " "	904	5'	"	"	10-20	
30'-35'	" " " " 30-40 @ 32.6'-33.0'	905	5'	"	"	10-20	
35'-40'	" " "	906	5'	"	"	10-20	
40'-45'	" " " " 75 @ 40.4'-40.9'	907	5'	"	"	10-20	
45'-50'	" " "	908	5'	"	"	10-20	
50'-55'	" " "	909	5'	"	"	10-20	
55'-60'	" " " " 30-40 @ 55.8'-56.4'	910	5'	"	"	10-20	
60'-65'	" " " " 30-40 @ 61.6'-61.9'	911	5'	"	"	10-20	
	at 63', coarser grained						
65'-70'	Coarser grained greywacke	912	5'	"	"	5-10	
70'-75'	" " "	913	5'	"	"	5-10	
75'-171'	" " "			Same as Background		5-6	
171'-180.8'	Light grey granite			"	"		
180.8'-200.8'	Coarser grained greywacke			"	"		
	Background of Scintillator readings 5-6						
	Core recovery - Complete						

NORTHERN MINER PRESS LIMITED, TORONTO-STOCK FORM No 501 REV. 9/44

DRILLED BY _____

SIGNED

George Miller

PROPERTY MacLeod-Cockshutt G.M. Anstice, Ont.

HOLE NUMBER _____

SHEET NUMBER _____

SECTION FROM _____ TO _____

DIAMOND DRILL RECORD

LOCATION: LAT. Claim S. 73427 50'S of No. 1
 DEP. _____
 ELEVATION OF COLLAR _____
 DATUM _____
 DIRECTION AT START: BEARING W
 DIP 45°

STARTED June 27/54
 COMPLETED " 29/54
 ULTIMATE DEPTH 201'
 PROPOSED DEPTH 200'

DEPTH FEET	FORMATION	SAMPLE NO.	WIDTH OF SAMPLE	GOLD S	SLUDGE GOLD S		
0'-6'	Casing			U-0			
6'-10'	Slaty green graywacke	914	4'	"	Reading	10	
10'-15'	" " " Reading 30-40 @ 11.3'-12.1'	915	5'	"	"	10	
15'-20'	" " "	916	5'	"	"	10-20	
20'-25'	" " "	917	5'	"	"	10-20	
25'-30'	" " "	918	5'	"	"	10-20	
30'-35'	" " "	919	5'	"	"	10-20	
35'-40'	" " "	920	5'	"	"	10-20	
40'-45'	" " "	921	5'	"	"	10-20	
45'-50'	" " "	922	5'	"	"	10-20	
50'-55'	" " "	923	5'	"	"	10-20	
55'-60'	" " "	924	5'	"	"	10-20	
60'-61'	" " "				"	5-10	
61'-65'	Quartzite		Same as Background			5-6	
65'-200'							
	Background 5-6						
	Core recovery - Complete						

SIGNED George Miller

DIAMOND DRILL RECORD

PROPERTY MacLeod-Cockshutt Gold Mines, Inatice, Ont. HOLE NO. 9

SHEET NUMBER 1 SECTION FROM _____ TO _____ STARTED Aug. 7/54

LATITUDE Claim S 73427 DATUM _____ COMPLETED " 10/54

DEPARTURE _____ BEARING W ULTIMATE DEPTH 185'

ELEVATION _____ DIP 45° PROPOSED DEPTH 200'

DEPTH FEET	FORMATION	SAMPLE NO.	WIDTH OF SAMPLE	GOLD g	SLURRY GOLD g		
0' - 4.0'	Casing <u>CASING</u>						
4.0' - 56.0'	Conglomerate						
56.0' - 84.0	Quartzite						
84.0' - 88.4	Slaty greywacke						
88.4' - 137.0	Granitic						
137.0' - 145.0	Chloritic greywacke						
145.0' - 185.0	Granite <u>End of Hole</u>						
Core recovery 97.5%							

N.M.P. TORONTO-STOCK FORM NO. 101 REV. 12/51

DRILLED BY _____

SIGNED *Lease Mills*

DIAMOND DRILL RECORD

PROPERTY MacLeod-Cockshutt Gold Mines, Anstice, Ont HOLE NO. 10

SHEET NUMBER 1 SECTION FROM _____ TO _____ STARTED Aug. 13/54
 LATITUDE Claim S 73427 DATUM _____ COMPLETED " 17/54
 DEPARTURE 330' E and 60' N of 9 BEARING 845°W ULTIMATE DEPTH 394'
 ELEVATION _____ DIP 45° PROPOSED DEPTH _____

DEPTH FEET	FORMATION	SAMPLE NO	WIDTH OF SAMPLE	GOLD g	SLUDGE GOLD g
0'- 6.0'	Casing				
6.0'- 25.0'	Greywacke & arkosic gvke. interbedded				
25.0'-100.0'	" " " "				
100.0'-153.0'	" with few narrow beds arkosic				
143.0'-190.5'	Conglomerate, coarse, tiny seams pyrite				
190.5'-206.5'	Greywacke, chloritic, coarse				
206.5'-225.0'	Conglomerate				
225.0'-295.5'	Quartzite, gradually becoming granitic in appearance				
295.5'-300.3'	Greywacke				
300.3'-306.0'	Quartzite as above				
306.0'-337.0'	Greywacke, chloritic, schistose, grades into a well defined amphibolitic rock 315'-337.0'				
337.0'-364.0'	Quartzite, coarse, granitic				
364.0'-376.0'	Greywacke, amphibolitic.				
376.0'-394.0'	Quartzite, coarse, granitic with 1.0' section of amphibolitic material 388'-389'				
	End of Hole				

N.M.P. TORONTO-STOCK FORM NO. 501 REV. 12-51

DRILLED BY _____

SIGNED _____

George Miller

DIAMOND DRILL RECORD

PROPERTY MacLeod-Cockshutt Gold Mines, Anstice, Ont HOLE NO. 12

SHEET NUMBER 1

SECTION FROM _____ TO _____

STARTED Aug. 26/54

LATITUDE Claim B 73427

DATUM _____

COMPLETED " 27/54

DEPARTURE 50' S of 2

BEARING V

ULTIMATE DEPTH 109'

ELEVATION _____

DIP 45°

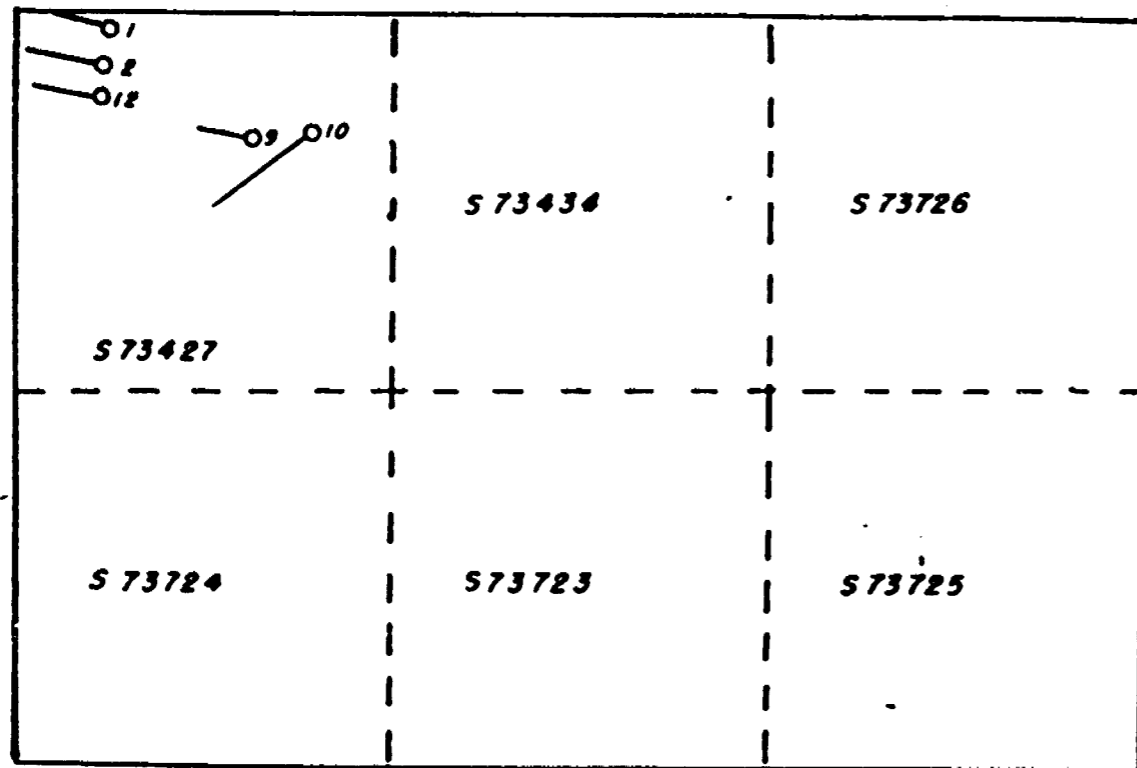
PROPOSED DEPTH _____

DEPTH FEET	FORMATION	SAMPLE NO	WIDTH OF SAMPLE	GOLD g	SLURRY GOLD g
0' - 6.0'	Casing				
6.0' - 44.5'	Graywacke				
44.5' - 109.0'	Quartzite				
	End of Hole				

N.M.P. TORONTO - STOCK FORM NO 101 REV 12/51

DRILLED BY _____

SIGNED George Miller



Claim S73427

<i>D.D.Hole</i>	<i>1</i>	<i>100'</i>
	<i>2</i>	<i>201'</i>
	<i>9</i>	<i>185'</i>
	<i>10</i>	<i>394'</i>
	<i>12</i>	<i>109' 989'</i>



MACDONALD & MACINTOSH

BARRISTERS, SOLICITORS, &C.

J. A. MACINTOSH, O.C. J. H. MACINTOSH, O.C.
C. H. WALKER, O.C. H. P. RIMBER
A. B. WHITELAW R. D. POUPORE

TELEPHONE: EMPIRE 6-5476
CABLE ADDRESS "MACDON" TORONTO

GENERAL ASSURANCE BUILDING
357 BAY STREET
TORONTO 1

October 20, 1954.

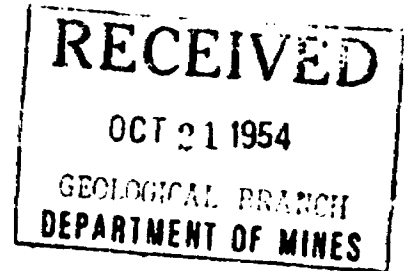


41114NE0009 0010 CREELMAN

900

Department of Mines,
Parliament Buildings,
Queen's Park,
Toronto 2, Ontario,

Attention of Dr. Hurst



Dear Sirs: Re: Claims S-73427 et al.

As requested by the Mining Recorder at
Sudbury, we are enclosing sketches showing location
of Diamond Drill Holes in connection with the recent
recording of work on the above claims.

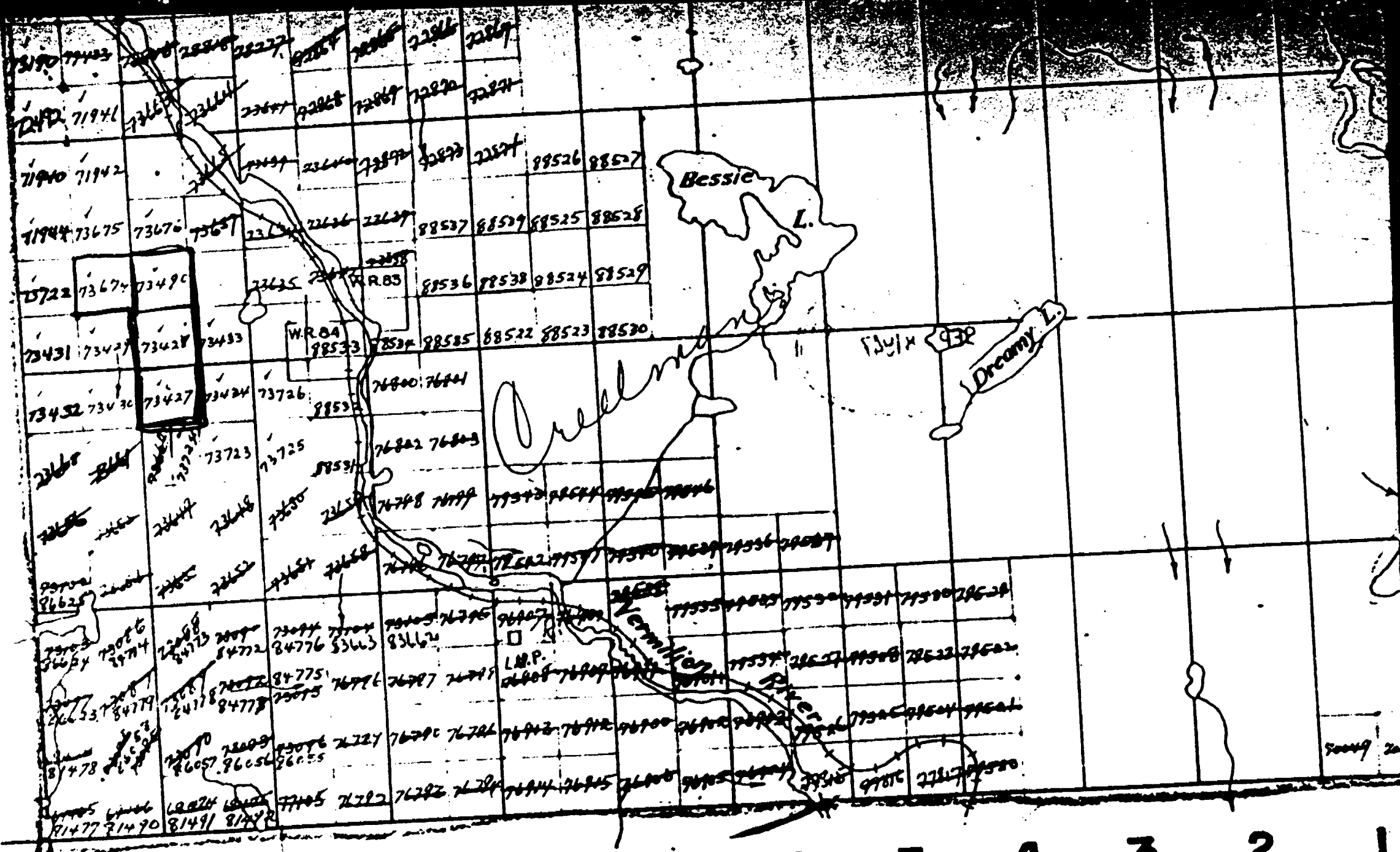
The Cores are held in a Core Shack on the
property.

Yours very truly,

HPK:PW
Enclosures

C.C.
Mining Recorder,
Sudbury, Ontario;

S-14-83



12 11 10 9 8 7 6 5 4 3 2 1