

Diamond Drilling



41114NE0201 0010C1 HUTTON

010

Township of Hutton

Report NO: 16

Work performed by: Gulf Minerals Canada Limited

Claim NO	Hole NO	Footage	Date	Note
S 358929	H-1	36'	May/74	(1)
S 358930	H-2	361'	May/74	(1)
S 358932	H-3	386'	May/74	(1)
S 358917	H-4	388'	May/74	(1)
	<u>H-5</u>	<u>277'</u>	May/74	(1)

TOTAL: 5 DH 1448 FT

Notes: (1) 28/74





**Gulf Minerals Canada Limited**  
**DIAMOND DRILL RECORD**

D.D.H. NO. H-2  
SHEET 1 OF 1

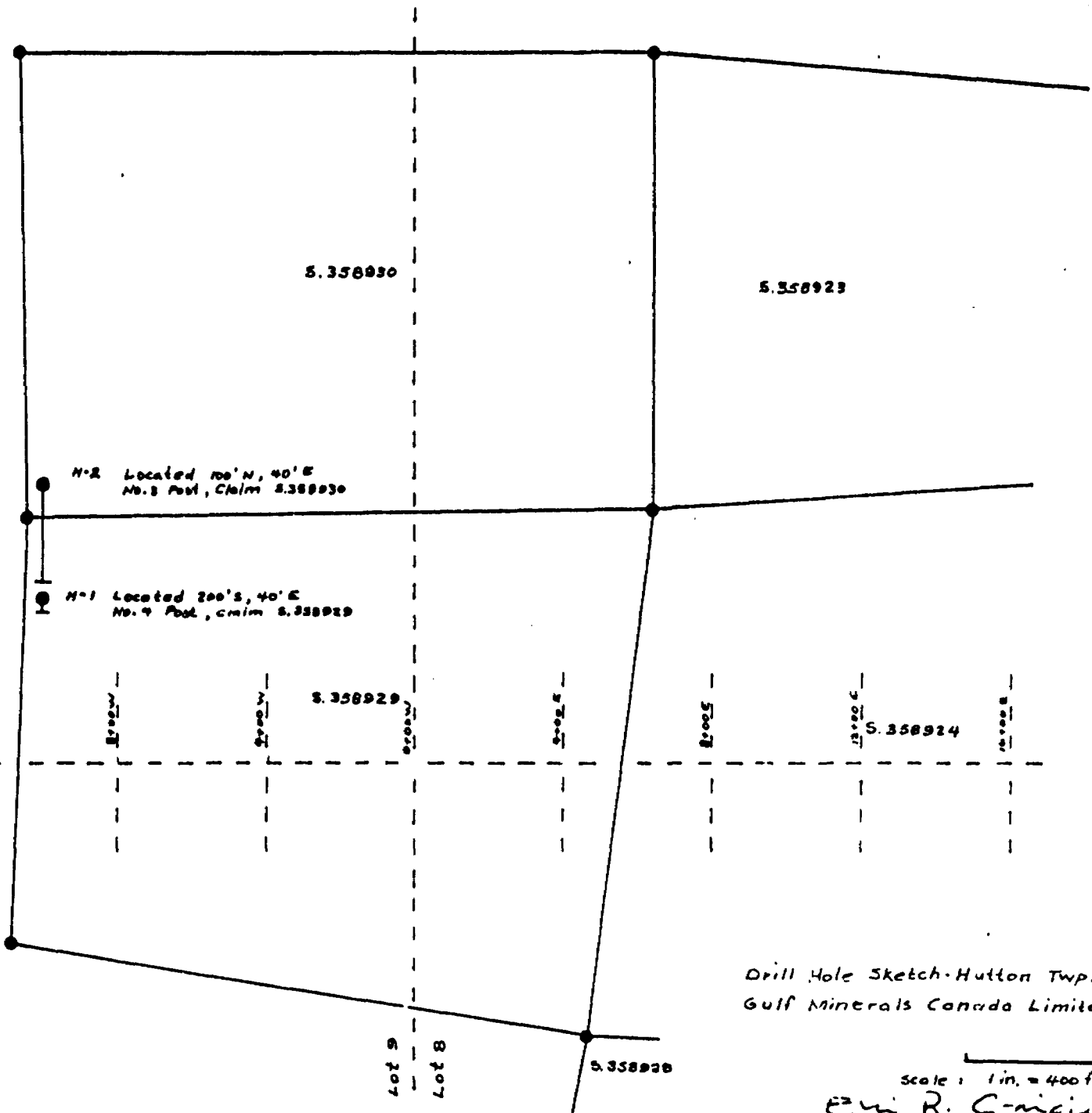
PROPERTY Sudbury - Hutton Township  
LATITUDE 7+50N  
LONGITUDE 10+00W  
ELEVATION 1205 Feet

BEARING - TRUE 180°  
DIP -45°  
FINAL DEPTH 361 feet  
CORE SIZE AQ, 1-1/16 inches

DATE STARTED May 5, 1974  
DATE COMPLETED May 7, 1974  
DRILLED BY Hosking Diamond Drilling  
LOGGED BY E. R. Craigie

DATE: May 10, 1974 SIGNED Eric R. Craigie

DEPTH FEET	F'TAGE CORED	F'TAGE REC'D	FORMATION	DESCRIPTION	DEPTH	BED'G & FOLIA	REMARKS SAMPLES ETC.
0 - 8			Overburden				
8-278			Mississagi	Quartzite; light to medium grey coloured; coarse grained, foliated; composition - primarily quartz grains.			
				65' One inch wide gouge zone	47	35°	
				88 - 94 Granitic, 91-92 very siliceous, minor sphalerite, galena.			Sampled for Au. 91-92 feet
				175 - 195 Brecciated quartzite.			
				202 - 205 Granitic.			
				208 - 209 Granitic.	121	60°	
				218 - 221 Dirty greywacke.			
				227 - 231 Reddish to pale grey quartzite.			
278 - 361			Transition zone	Quartzite and granite.			
				278 - 293 Granitic, mottled pink and grey; hard, dense, coarse grained foliated, composition - k feldspar, quartz, biotite, minor py.			
				293 - 309 Mississagi. Quartzite, argillite. 301 - 308 argillite, fine grained, soft, calcareous.			
				309 - 361 Granitic.			
				337 - 338 - Altered basic dike	350	40°	
				343 - 344 - Brecciated, calcitic matrix			
				351 - 352 - Calcitic veinlet.			



Concession VI

base line

Concession V

S. 358930

S. 358923

N-2 Located 100' N, 40' E  
No. 2 Post, Claim S. 358930

N-1 Located 200' S, 40' E  
No. 4 Post, claim S. 358929

S. 358929

S. 358924

Drill Hole Sketch - Hutton Twp.  
Gulf Minerals Canada Limited

Scale: 1 in. = 400 ft.

Edwin R. Craigie

8 107  
6 107

S. 358928



# Gulf Minerals Canada Limited

## DIAMOND DRILL RECORD

D.D.H. NO. H-3  
SHEET 1 OF 1

PROPERTY SUDBURY - HUTTON TOWNSHIP  
LATITUDE 3+70N  
LONGITUDE 38+00E  
ELEVATION 1150 Feet

BEARING--TRUE 180°  
DIP -45°  
FINAL DEPTH 385 Feet  
CORE SIZE AQ, I-1/16 inches

DATE STARTED May 14, 1974  
DATE COMPLETED May 17, 1974  
DRILLED BY Hosking Diamond Drilling  
LOGGED BY R. B. Allen

DATE: May 18, 1974 SIGNED R. B. Allen

DEPTH FEET	F'TAGE CORED	F'TAGE REC'D	FORMATION	DESCRIPTION	DEPTH	BED'G & FOLIA	REMARKS SAMPLES ETC.
0 - 7			Overburden	Casing			
7 - 64			Mississagi	Quartzite; Grey, hard, recrystallized. Few white quartz pebbles, few arkosic sections.		Obscure	
64 - 113			Mississagi	Quartzite; Dark grey, local vaguely defined shaley sections but always hard, siliceous.		Fractures slips 45° to CA.	NO
113 - 128			Mississagi	Quartzite; Light grey, all silica grains distinct.		Obscure	
128 - 346			Mississagi	Quartzite; Dark grey; local, vaguely defined shaley sections but always hard, siliceous.		Slips 45° to CA.	SAMPLES
346 - 372			Mississagi	Quartzite; Light grey, visible granularity. Some coarse grains up to 1/4 inches. Few pebbles especially 368-372'. Sharp contact at 372', 60° to the core axis.		Obscure	TAKEN
372 - 386			Archean	Basement volcanics; Highly altered, schistose, intermediate in composition.		Slips 60° to CA.	



Gulf Minerals Canada Limited  
DIAMOND DRILL RECORD

D.D.H. NO. H-4  
SHEET 1 OF 1

PROPERTY SUDBURY - HUTTON TOWNSHIP  
LATITUDE 43+00N  
LONGITUDE 46+00E  
ELEVATION 1300 Feet

BEARING - TRUE 180°  
DIP -45°  
FINAL DEPTH 388 Feet  
CORE SIZE AQ, 1-1/16 inches

DATE STARTED May 19, 1974  
DATE COMPLETED May 21, 1974  
DRILLED BY Hosking Diamond Drilling  
LOGGED BY R. B. Allen

DATE: May 22, 1974

SIGNED

R. B. Allen

DEPTH FEET	FTAGE CORED	FTAGE REC'D	FORMATION	DESCRIPTION	DEPTH	BED'G & FOLIA	REMARKS SAMPLES ETC.
0 - 12			Overburden	Casing			
12 - 72			Mississagi	Quartzite; Grey to buff, hard, siliceous; visibly granular, sub-angular. Few quartz stringers.			Rusty slips
72 - 83			Mississagi	Quartzite; as above, few remnants of crumbled granite, vague edges.		Slips at 45° to CA.	
83 - 295			Mississagi	Quartzite; Dark grey, granular but hard, dense. Grain boundaries appear etched or irregular, not clearly rounded. Locally of shaly appearance but retains quartzite hardness. Few small ragged fragments of volcanic or dyke material cross core at small angles. Few quartz stringer, especially 188-205' and 267-273'.		Slips at 45° to CA.	NO
295 - 298			Volcanic basement	Fragment; very ragged, broken, slab volcanic or possible dyke. Torn boundaries. Lies at 20° to the core axis.			SAMPLES TAKEN
298 - 388			Mississagi	Quartzite; As for 83-295. Dark, patchy, grey colour. Granular with small local fragments of volcanics, especially 345-356'. A very few quartz stringers. Base of quartzite similar to hole H-3 near contact with basement volcanics.		Slips 60° to CA.	



**Gulf Minerals Canada Limited**  
**DIAMOND DRILL RECORD**

D.D.H. NO. H-5  
SHEET 1 OF 1

PROPERTY SUDBURY - HUTTON TOWNSHIP  
LATITUDE 3+75S  
LONGITUDE 51+00E  
ELEVATION 1300 feet

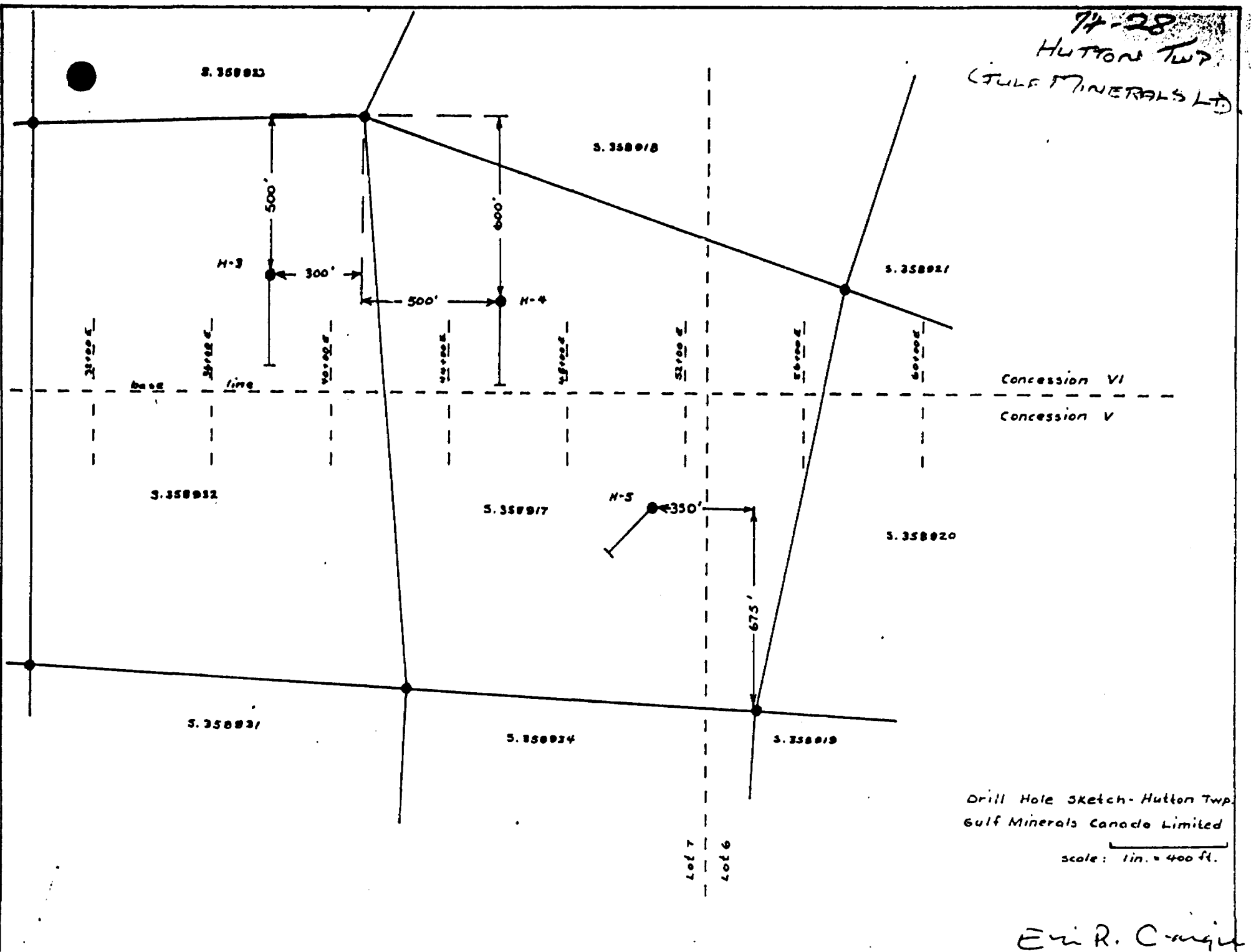
BEARING - TRUE 225°  
DIP -45°  
FINAL DEPTH 277 Feet  
CORE SIZE AQ. 1-1/16 inches

DATE STARTED May 23, 1974  
DATE COMPLETED May 28, 1974  
DRILLED BY Hosking Diamond Drill  
LOGGED BY R. B. Allen

DATE: May 30, 1974 SIGNED R. B. Allen

DEPTH FEET	F'TAGE CORED	F'TAGE REC'D	FORMATION	DESCRIPTION	DEPTH	BED'G & FOLIA	REMARKS SAMPLES ETC.
0 - 6			Overburden	Casing			
6 - 97			Mississagi	Quartzite; Dark grey, medium grained; occasional narrow argillite beds, slightly radioactive (up to 2X background).		Obscure	
				39 - 41 Quartz pebble conglomerate up to 5% pyrite.			
				43 - 43.5 Quartz pebble conglomerate bed.			
				57 - 57.4 Quartz pebble conglomerate, sparse pyrite.			NO
97 - 138			Mississagi	Quartzite; Dark, blue-grey, gritty, somewhat altered in appearance. A few small pebbles throughout.			SAMPLES
							TAKEN
138 - 165.1			Mississagi (?)	Quartzite is gradational into a dark green chloritic material, fine grained and possibly altered argillite.		Obscure	
165.1 - 275			Archean	Basement; quartz gabbro to quartz diorite. Some very coarse grained. Mafic minerals mostly altered to chlorite.			
275 - 277			Archean	Basement; Quartz diorite is gradational to a granitic rock.			

74-28  
 HUTTON TWP.  
 (GULF MINERALS LTD.)



Drill Hole Sketch - Hutton Twp.  
 Gulf Minerals Canada Limited  
 scale: 1 in. = 400 ft.

Eri R. Craig



