

***** = TRAVERSES
PREE#2 GENERAL PROSPECTIN

63.5556
OP 89-69



41114NW0015 63.5556 RHODES

010

Travers's west of Richardson Lake

This map shows area where I traversed & prospected in Aug. 22, 23, 24th 1989

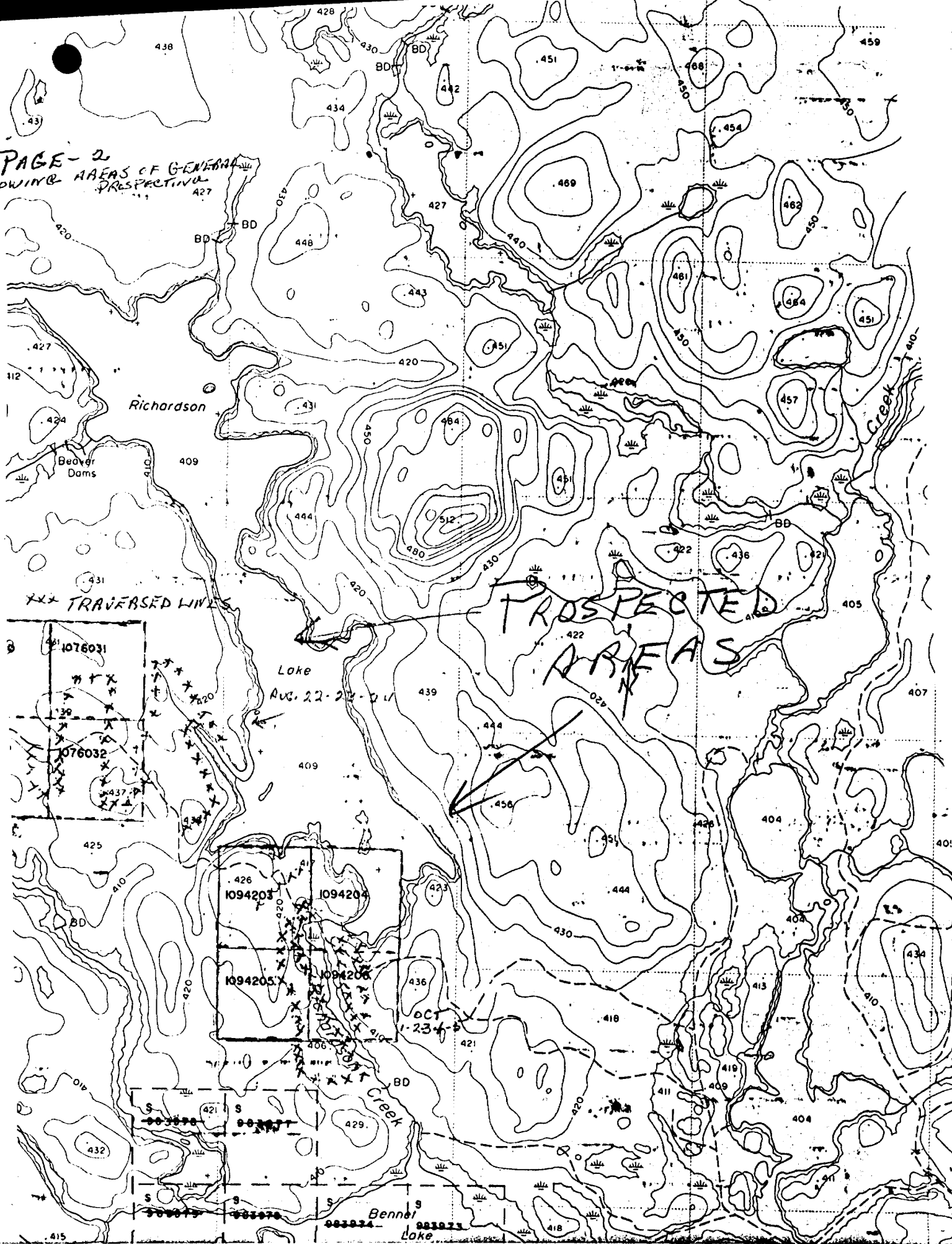
this area is very heavily treed with young spruce and windfalls outcrops are scarce However a Quartz vein was discovered and worked on. Details

in this report. ^{OUTCROPS}
^{METAVOLCANICS}
BANDER IRON FLOAT.
Prospecting south of Richardson

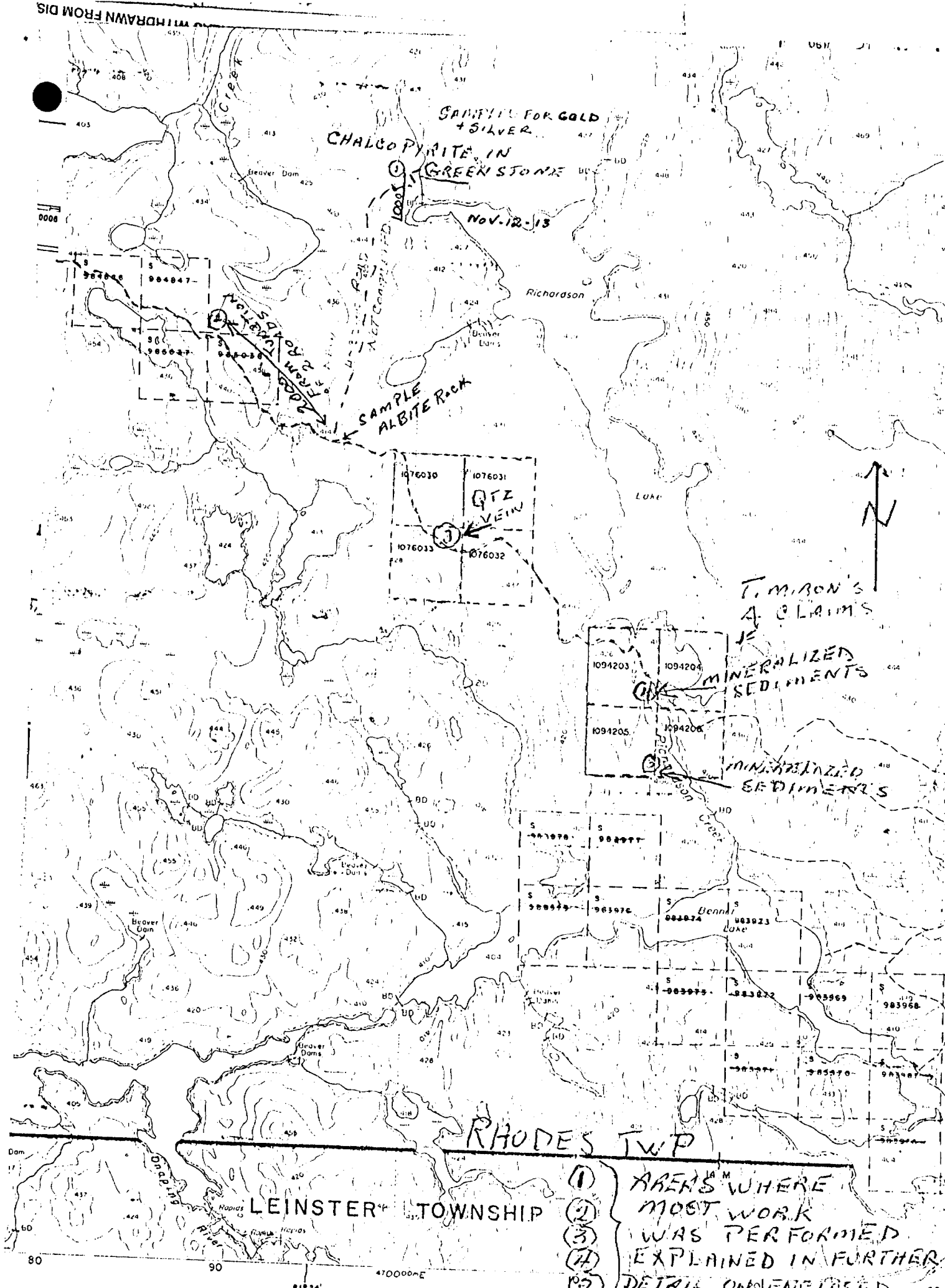
Lake Oct. 1-2-3-4-5th /89

The country rock is mostly meta-volcanics but along both sides of Richardson creek altered sediments occur and they are well Mineralized visible mineral were pyrite pyrrhotite molybdenite and galena. I feel that gold should also be present I cleaned out some of several old pits some must be 75 years old judging by the size of trees in them later in the month I staked 4 claims to cover the area

PAGE - 2
SHOWING AREAS OF GENERAL
PRESPECTIVE



WITHDRAWN FROM DIS



- ① AREAS WHERE
 ② MOST WORK
 ③ WAS PERFORMED
 ④ EXPLAINED IN FURTHER
 ⑤ DETAIL ONE ENCLOSED



Ministry of
Northern Development
and Mines

Temiskaming
Testing
Laboratories

P.O. Box 799
Presley St.
Cobalt, Ontario
POJ 1C0
(705) 679-8313

Report Number

CB 11139

Laboratory Report

Date Nov. 27, 1989.

Issued To: Mr. T. A. Miron, 75 Albany St., Sudbury, Ont. P3C 2Z4

Sample Number	Gold Oz. Per Ton	Silver Oz. Per Ton	
TL -1	0.018		
LR -1	0.003	Trace	<p># Nov. 12-13th</p> <p>These three samples were taken from areas marked on my map as # 1 and #2</p> <p>IR-1 was taken from Chalcopyrite stringers in greenstone and assayed for gold and silver chalco stringers @ 1/2 inch wide approx. 1000feet north of the North east end of Richardson Lake. on a logged out area 100 ft. off and north of a logging road.</p> <p>Sample IR-1 taken from massive angular boulders at roadside</p> <p>The boulders are freckled with Magnetite about pencil size with pyrite dot in the center of each.</p>

Fees Received Charged 3 coupons card #1047

HOST ROCK (ALBITE)

L. Owsicki for
L. Owsicki
Manager

Except by special permission, reproduction of these results must include any qualifying remarks made by this ministry with reference to any sample.

OCT-6-7

5 PIT IS VERY OLD

SEAMS OF PYRITE

PYRRHOTITE THROUGHOUT THE

ROCKS DUG FROM OLD

DUMP. SOME TREES

& WIND FALLS REMOVED

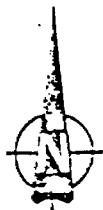
A 2' WIDE QZ VEIN CUTS

ACROSS CENTER OF PIT

VERTICAL STRIKING EASTWEST

ONE SAMPLE OF PYRITIZED

ROCK TAKEN OUT FOR ASSAY



4

1

CLAIM #

1094205

NO 5 P.T.

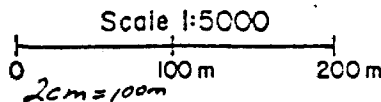


SAMPLED

8' X 10' X 5' DEEP

3

2



RHODES TWP



Ministry of
Northern Development
and Mines

Temiskaming
Testing
Laboratories

P.O. Box 799
Presley St.
Cobalt, Ontario
POJ 1C0
(705) 679-8313

Report Number
CB 11063

Laboratory Report

Date Oct. 11, 1989

Issued To: Mr. Ted Miron, 75 Albany Street, Sudbury, Ont. P3C 2Z4

Sample Number	Gold Oz. Per Ton	Silver Oz. Per Ton	
1-R-3	Trace		# 5 PIT SAMPLE

Fees Received Charged 1 coupon card #0990

L. Owslacki for
L. Owslacki
Manager (Acting)

Except by special permission, reproduction of these results must include any
qualifying remarks made by this ministry with reference to any sample.

RHODES TWP

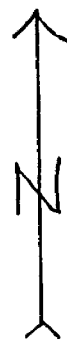
④ THIS PIT IS APPROXIMATELY
4' DEEP - 8' LONG - 6' WIDE

THE ALTERED SEDIMENTS ARE STRIKING N-NEX S-SW.
DIPPING AT AN ANGLE OF 60°

MINERALS FOUND ARE DISSEMINATED MOLYBDENITE
GALENA, PYRITE WHICH IS SOMETIMES MASSIVE

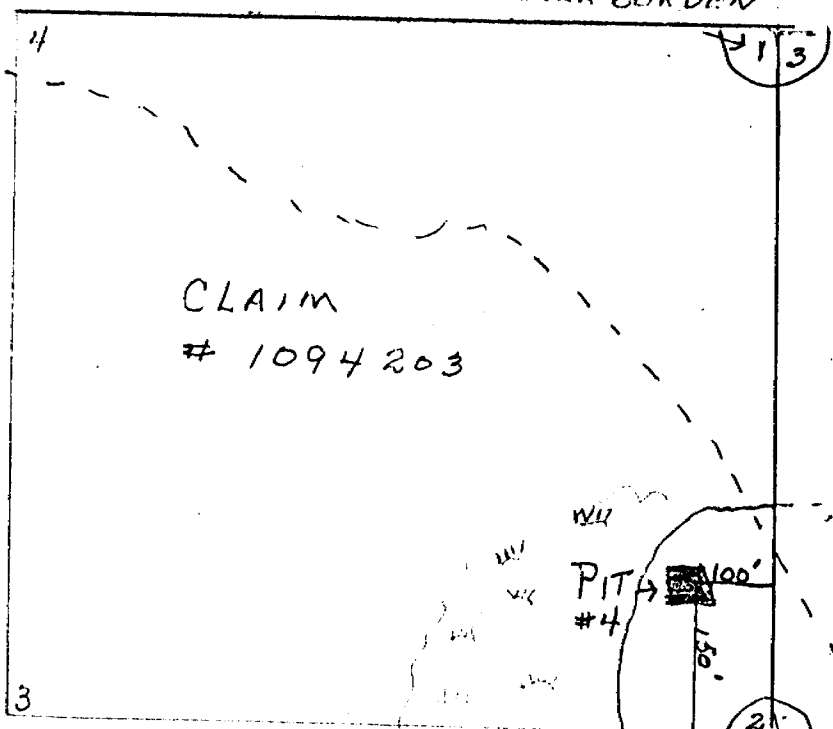
ROCKS ARE A MIXTURE OF FELSPARS
SANDSTONE + FUCSITE WELL LAMINATED

IN LAYERS FROM 1/8" TO 8" THICK.
THICKNESS OF SEDIMENTS FORMATION
IS UNKNOWN DUE TO OVER BURDEN



OLD TRAIL

25^d
NOV. 26
27
TWO MEN
IN PIT #4



CLAIM
1094203

CLAIM #
1094205

PIT #4

WET
MARSH
AREA

AREA

RICHARDSON
LAKE

X OUTCROPS
X SEDIMENTS + PYRITE
X SEDIMENTS + PYRITE
X SEDIMENTS + PYRITE
GENERALIZED
SEDIMENTS
IN ALL OUT-
CROPS ALONG MARSH



Ministry of
Northern Development
and Mines

Temiskaming
Testing
Laboratories

P.O. Box 799
Presley St.
Cobalt, Ontario
POJ 1C0
(705) 679-8313

Report Number
CB 11145

Laboratory Report

Date Nov. 30, 1989.

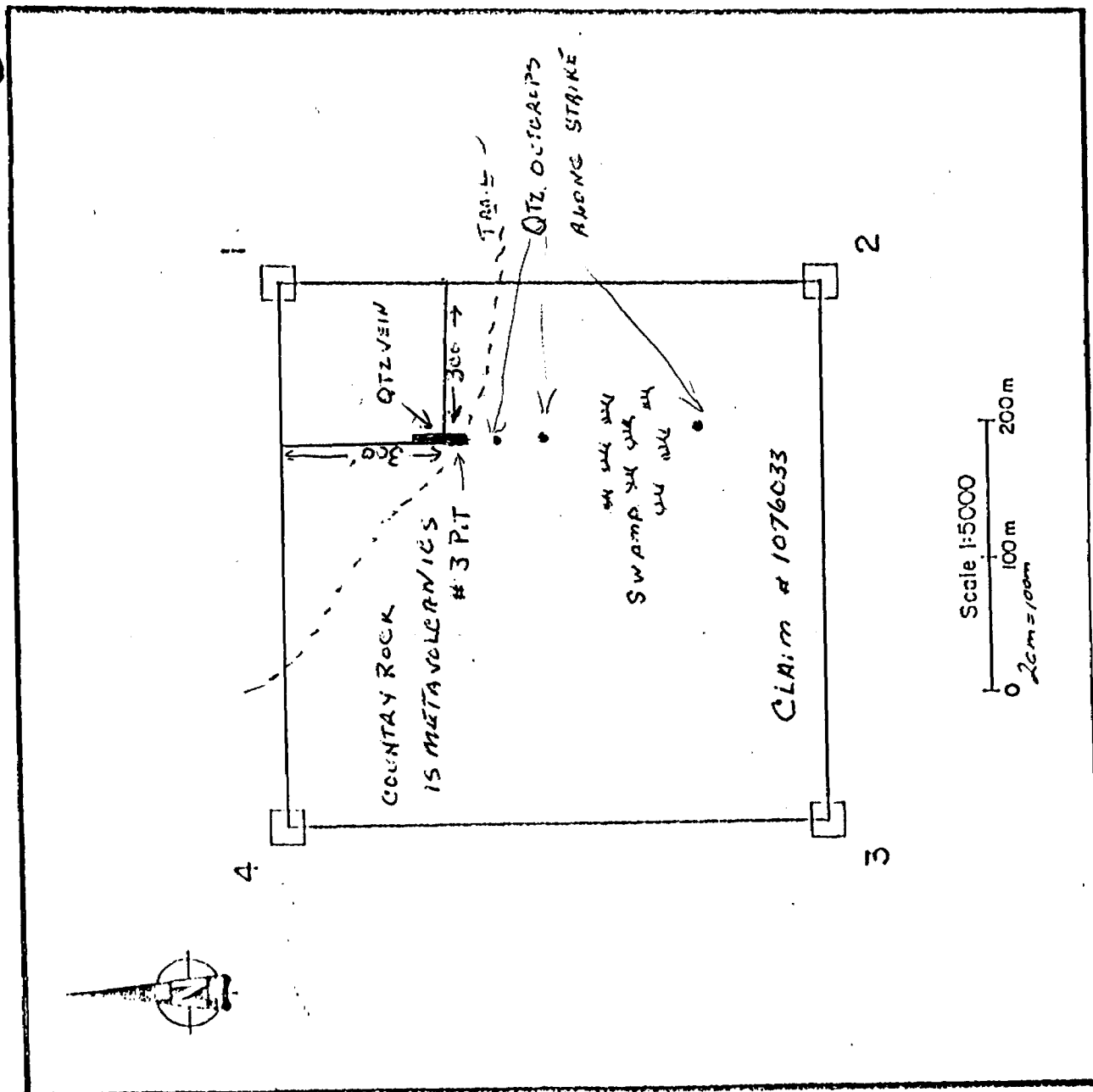
Issued To: Mr. Ted Miron, 75 Albany Street, Sudbury, Ont. P3C 2Z4

Sample Number	Gold Oz. Per Ton	Silver Oz. Per Ton	
RC-1	0.006		
RC-2	0.032		<p><i>See also 7000 P17 #1</i></p>

Fees Received Charged 2 coupons card #1047

L. Owsicki for
L. Owsicki
Manager

Except by special permission, reproduction of these results must include any qualifying remarks made by this ministry with reference to any sample.



Sept. 10, 11, 12, 13, 14, 15, /89 A small outcrop of quartz noted earlier was cleaned off and found to be about 12 feet wide the vein ~~is~~ dipped vertical and appeared to be striking north by cutting away underbrush and stripping northward quartz was exposed for fifty feet and goes under heavier overburden. Southward and across old logging road the terrain dips toward a swamp and by probing through the moss and overburden Quartz was found in three more areas along strike I crossed the 300 ft. wide swamp and found Qtz on the south side.

On Sept ~~14-15~~ Mike Rieux another prospector in the area assisted me to bring in my portable plunger gas and steel to test Qtz vein for gold. My samples were disappointing 3 samples of plunger sludge and one chip showed nil to a trace. Mike later staked this area and I use his claim post to locate the Qtz vein on this map. I moved to prospect south of Richardson Lake.



Ministry of
Northern Development
and Mines

Temiskaming
Testing
Laboratories

P.O. Box 799
Presley St.
Cobalt, Ontario
P0J 1C0
(705) 679-8313

Report Number
CB 11029

Laboratory Report

Date Sept. 6, 1989.

Issued To: Mr. T. Miron, 75 Albany Street, Sudbury, Ont. P3C 2Z4

Sample Number	Gold Oz. Per Ton	Silver Oz. Per Ton	
#1-R	Trace		<p># 3 PIT 1. DRILLED 3 PLUGGER HOLES 2' DEEP IN QTZ VEIN AT #3 PIT AND COLLECTED DUST FOR ASSAY NO GOLD IN DUST OR SLUDGE TRACE IN CHIP SAMPLE</p>
1 Sludge	Nil		
2 Sludge	Nil		
3 Sludge	Nil		

Fees Received Charged 4 coupons card #0990

L. Owsiacski
L. Owsiacski,
Manager (Acting)

Except by special permission, reproduction of these results must include any
qualifying remarks made by this ministry with reference to any sample.

AUG. 29-30

THIS IS A LOGGED OUT AREA AND
BUAM OVER.

THE ROCK EXPOSURES ARE ALL
PINK GRANITE INTRUDED
BY SEVERAL GABBRO DYKES

ONE WEATHERED DIKE CONTAINED
MUCH QUINCH IN SIZE I WAS
ABLE TO COLLECT A HANDFUL
OF THIS MATERIAL AND FOUND
OUT THAT A TROCH'S HERT
CAUSED IT TO EXFOLIATE
A NICE LOOKING VERMICULITE
BUT NOT ENOUGH WAS FOUND
TO BE OF ANY IMPORTANCE

ANOTHER DYKE SHOWN ON
MAP CONTAINED LARGE BLACK
CRYSTALS THAT SPARKLED
IN SUNLIGHT COULD MAKE
A NICE BUILDING STONE
FOUND OUT THAT SIMILAR
MATERIAL IS BEING QUARRIED
AT RIVER VALLEY

SAMPLED THIS DYKE & HAD
A PEICE SAWED IN TWO

ALSO TOOK A SAMPLE FOR
GOLD ASSAY BECAUSE AT
THE CONTACT WITH GRANITE
IT CONTAINED CHALCOPYRITE
& PYRRHOTITE (DISSEMINATED)



Ministry of
Northern Development
and Mines

Temiskaming
Testing
Laboratories

P.O. Box 799
Presley St.
Cobalt, Ontario
P0J 1C0
(705) 679-8313

Report Number
CB 11097

Laboratory Report

Date Oct. 26, 1989.

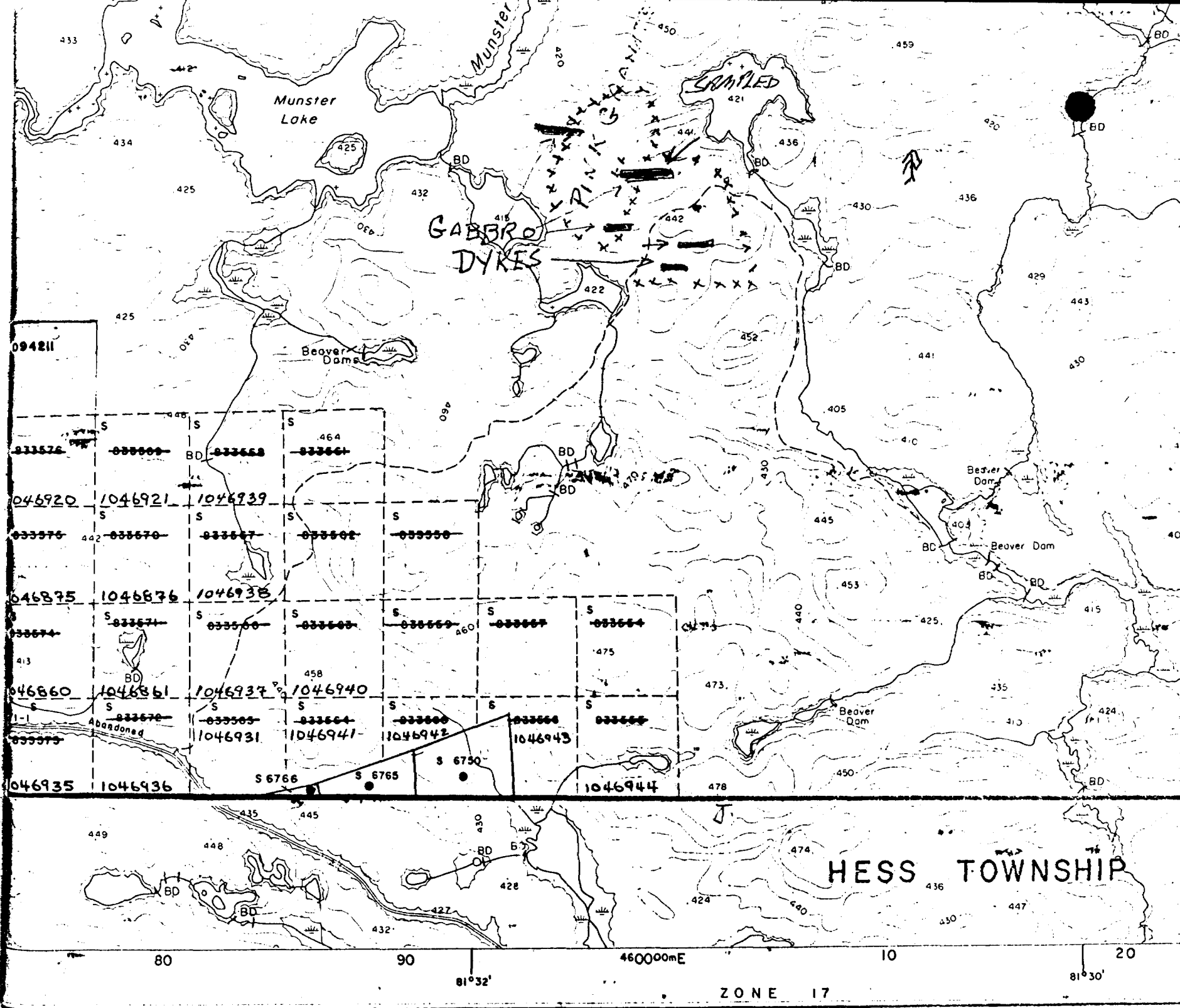
Issued To: Mr. T. Miron, 75 Albany Street, Sudbury, Ont. P3C 2Z4

Sample Number	Gold Oz. Per Ton	Silver Oz. Per Ton	
E-2-89	Nil		MUNSTER.

Fees Received Charged 1 coupon card #0990

L. Owsicki for
L. Owsicki
Manager (Acting)

Except by special permission; reproduction of these results must include any qualifying remarks made by this ministry with reference to any sample.



094211

033576

046920

033576

046875

046860

046935

033577

1046921

033570

1046876

1046861

1046936

033578

1046939

033577

1046938

1046937

1046931

033579

033580

033581

033582

033583

033584

033585

033586

033587

033588

033589

033590

033591

033592

033593

033594

033595

033596

033597

033598

033599

033600

033601

033602

033603

033604

033605

033606

033607

033608

033609

033610

033611

033612

033613

033614

033615

033616

033617

033618

033619

033620

033621

033622

033623

033624

033625

033626

033627

033628

033629

033630

033631

033632

033633

033634

033635

033636

033637

033638

033639

033640

033641

033642

033643

033644

033645

033646

033647

033648

033649

033650

033651

033652

033653

033654

033655

033656

033657

033658

033659

033660

033661

033662

033663

033664

033665

033666

033667

033668

033669

033670

033671

033672

033673

033674

033675

033676

033677

033678

033679

033680

033681

033682

033683

033684

033685

033686

033687

033688

033689

033690

033691

033692

033693

033694

033695

033696

033697

033698

033699

033700

033701

033702

033703

033704

033705

033706

033707

033708

033709

033710

033711

033712

033713

033714

033715

033716

033717

033718

033719

033720

033721

033722

033723

033724

033725

033726

033727

033728

033729

033730

033731

80

90

46000mE

10

20

81°32'

ZONE 17

81°30'

HESS TOWNSHIP