



41114SE0012 0011A1 HUTTON

010

Diamond Drilling

Township of Hutton

Report No: 11

Work performed by: Jonsmith Mines Ltd (Leslie claims)

Claim No	Hole No	Footage	Date	Note
S 53814	<u>MS-1</u>	<u>501'</u>	Oct/54	
	<i>TOTAL: 1DH</i>	<i>501 FT.</i>		

Notes:

DIAMOND DRILL RECORD

Hole No. MS-1 Sheet No. 1

Property S.53814
 Location Hutton Twp. Dist. Sudbury
 Latitude 75° N. of No. 2 post
 Departure 1120' West of No. 2 Post
 Bearing North 61° West

Dip 45°
 Total Footage 501

Elev. Collar Surface
 Datum _____
 Date Started Oct 26th 1954
 Date Completed Oct 31st 1954
 Drilled by Ken. Longyear Diamond Drill Co
 Logged by E. J. Gauvreau Geologist

Footage		Formation	Sample Number	Sample Width	Gold Sample	Gold Sludge	Remarks
From	To						
0.0	8.0'	Casing					
8.0	28.7'	M.G. biotite granite gneiss.					
28.7	33.0'	M.G. Pink granite					
33.0	40.0'	same as 8.0-28.7'					
40.0	56.0'	Same as 28.7-33.0.					
56.0	63.0'	M.G. dark grey granodiorite.					
63.0	74.2'	Narrow granite dikes cutting granodiorite.					
74.2	82.8'	Banded silicified tuffaceous volcanics.					
82.8	94.0'	C.G. granite.					
94.0	96.8'	Same as 74.2-82.8.					
96.8	98.5'	C.G. granite.					
98.5	113.0'	M.G. andesite,					
113.0	114.6'	Granite.					
114.6	115.7'	Banded tuffs.					
115.7	116.6'	Granite.					
116.6	133.0'	Grey to black banded chloritized andesite.					
133.0	160.0'	Grey to Pink granite.					
160.0	177.5'	Same as 116.6'-133.0'					
177.5	182.0'	Tuffs.					
182.0	182.7'	Granite.					
182.7	242.5'	Altered tuffs with numerous narrow bands of magnetite minor pyrite and chalcopyrite.					
242.5	258.0'	F.G. basalt, some silicification.					
		E. J. Gauvreau, Geologist.					

Date of Examination _____

DIAMOND DRILL RECORD

Hole No. MB-1 Sheet No. 2

Property S.53814
 Location Hutton Twp. Dist. of Sudbury
 Latitude 75' North of No. 2 Post.
 Departure 1120' West of No. 2 post.
 Bearing North 61° West

Dip 45°

Elev. Collar Surface
 Datum _____
 Date Started Oct 26th 1954
 Date Completed Oct 31st 1954
 Drilled by Cox Konger Diamond Drill Co. North Bay
 Logged by E. J. Gauvreau Geologist

Total Footage 501

Footage		Formation	Sample Number	Sample Footage	Sample Width	Gold Sample	Gold Sludge	Remarks
From	To							
258.0	269.0'	Highly silicified volcanics						
269.0	289.0'	Banded tuffaceous acid volcanics with narrow granite dikes.						
289.0	296.0'	F.G. grey and pink granite.						
296.0	323.8'	Same as 269.0-289.0'						
323.8	348.0'	F.G. pink granite.						
348.0	373.0'	Same as 269.0-289.0'						
373.0	430.0'	C.G. to F.G. Andesite.						
430.0	501.0'	Silicified acid volcanics.						
		475.0' 475.5' massive graphite.						
		495.0-501' highly silicified.						
		E. J. Gauvreau, Geologist.						

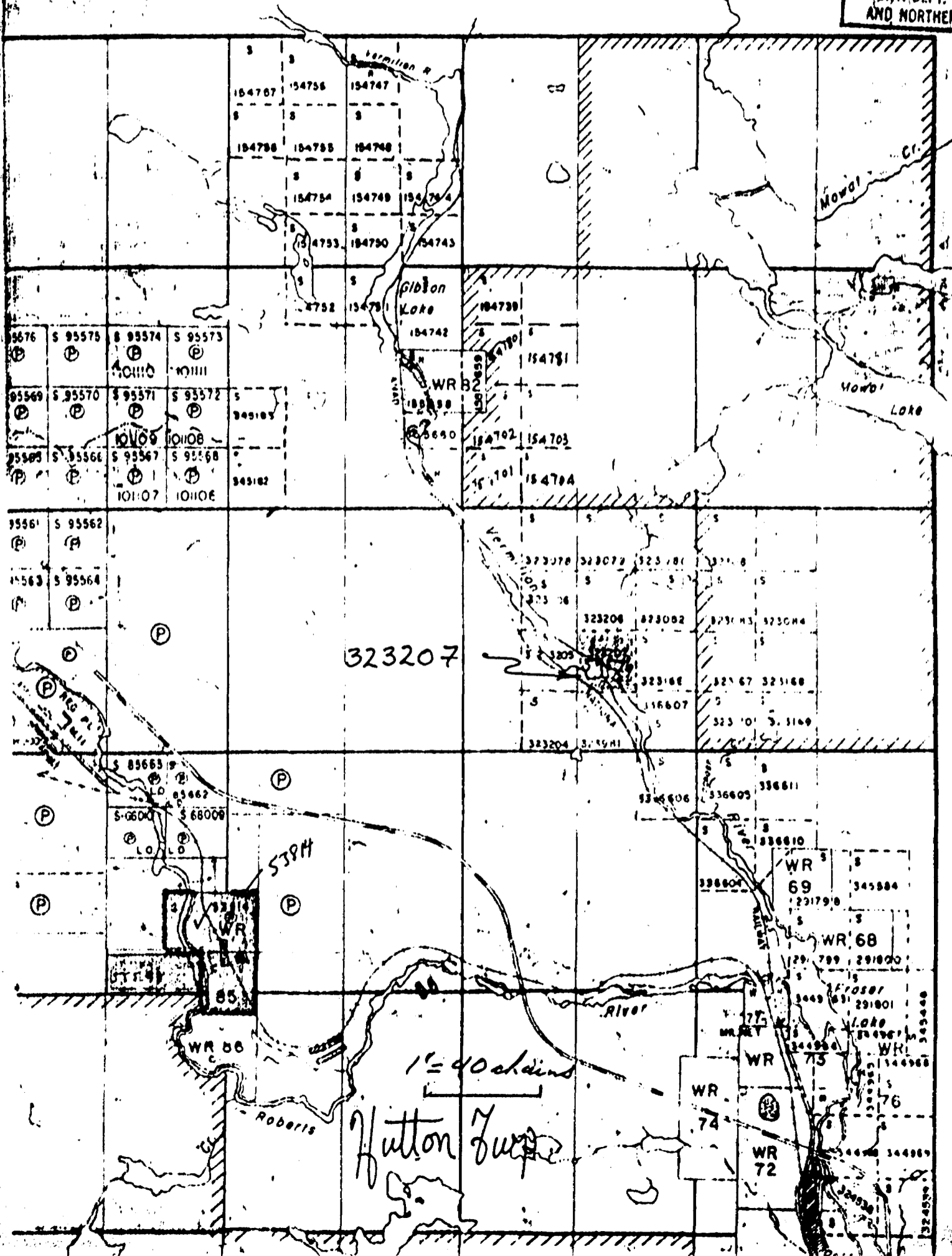
Date of Examination _____
Core is at Jonsmith Mine. (CORE IS AT JONSMITH MINE)

CREELMAN TWP.

DATE OF

OCT 26

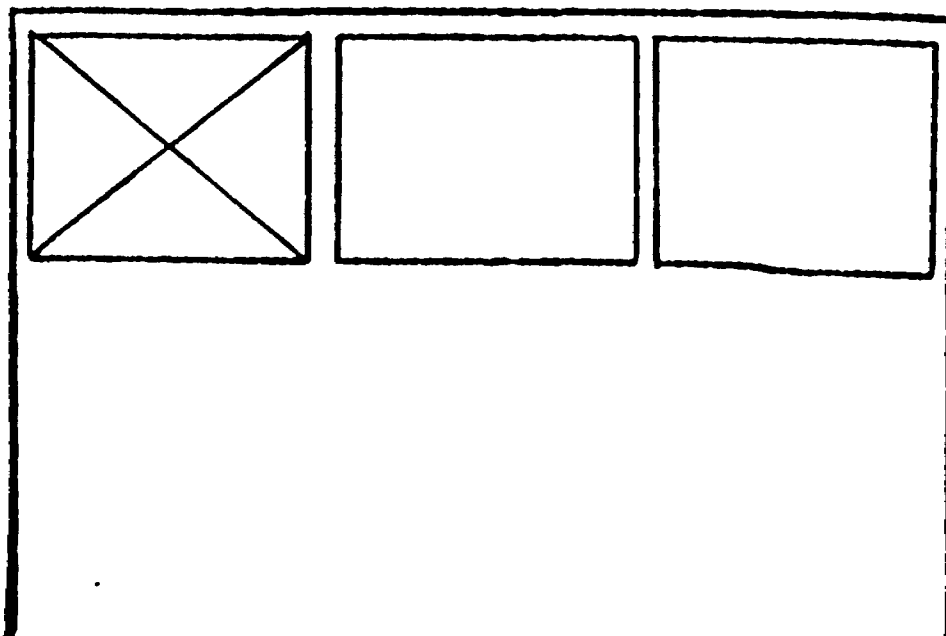
ONT. DEPT. OF
LANDS AND FORESTRY

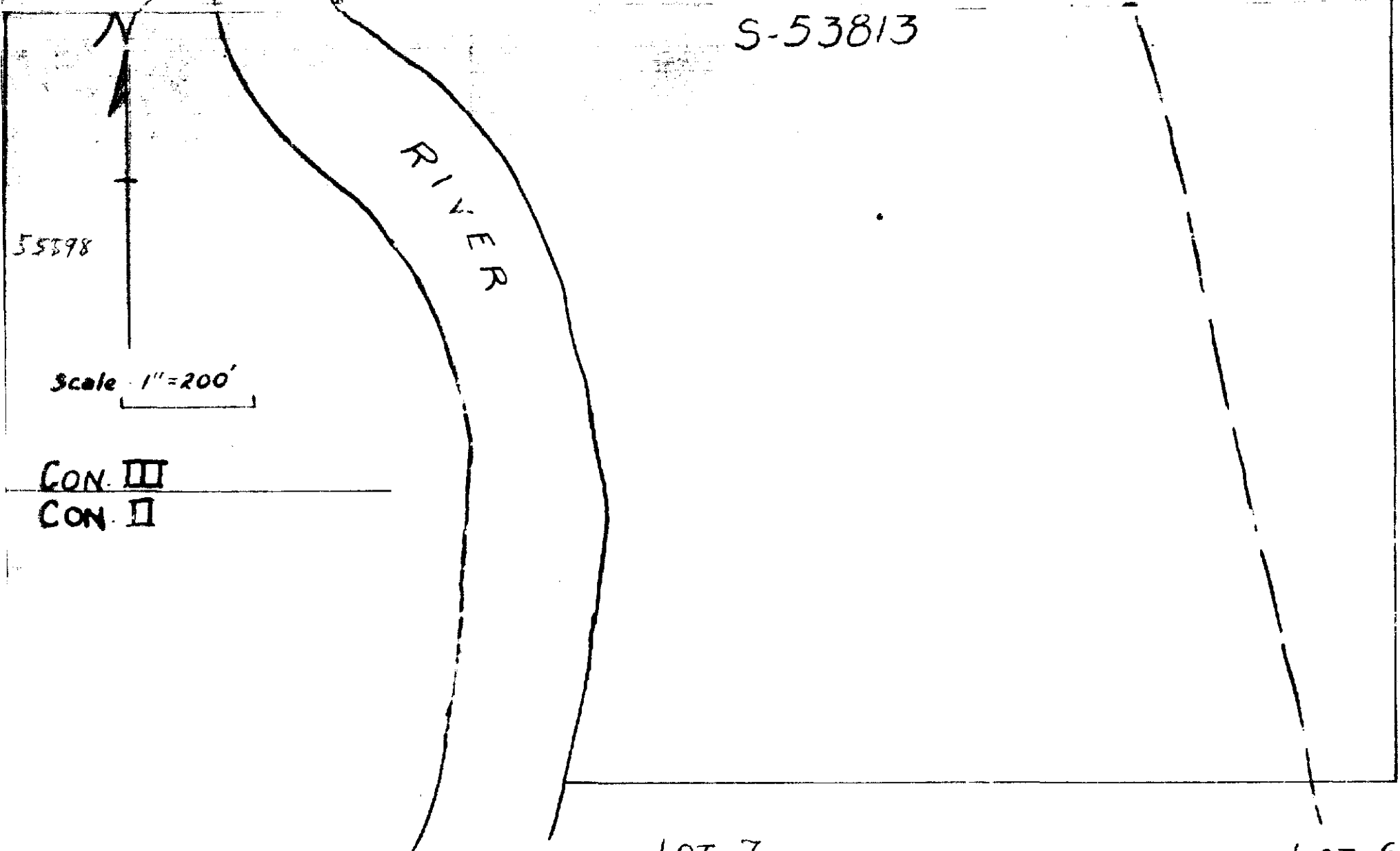
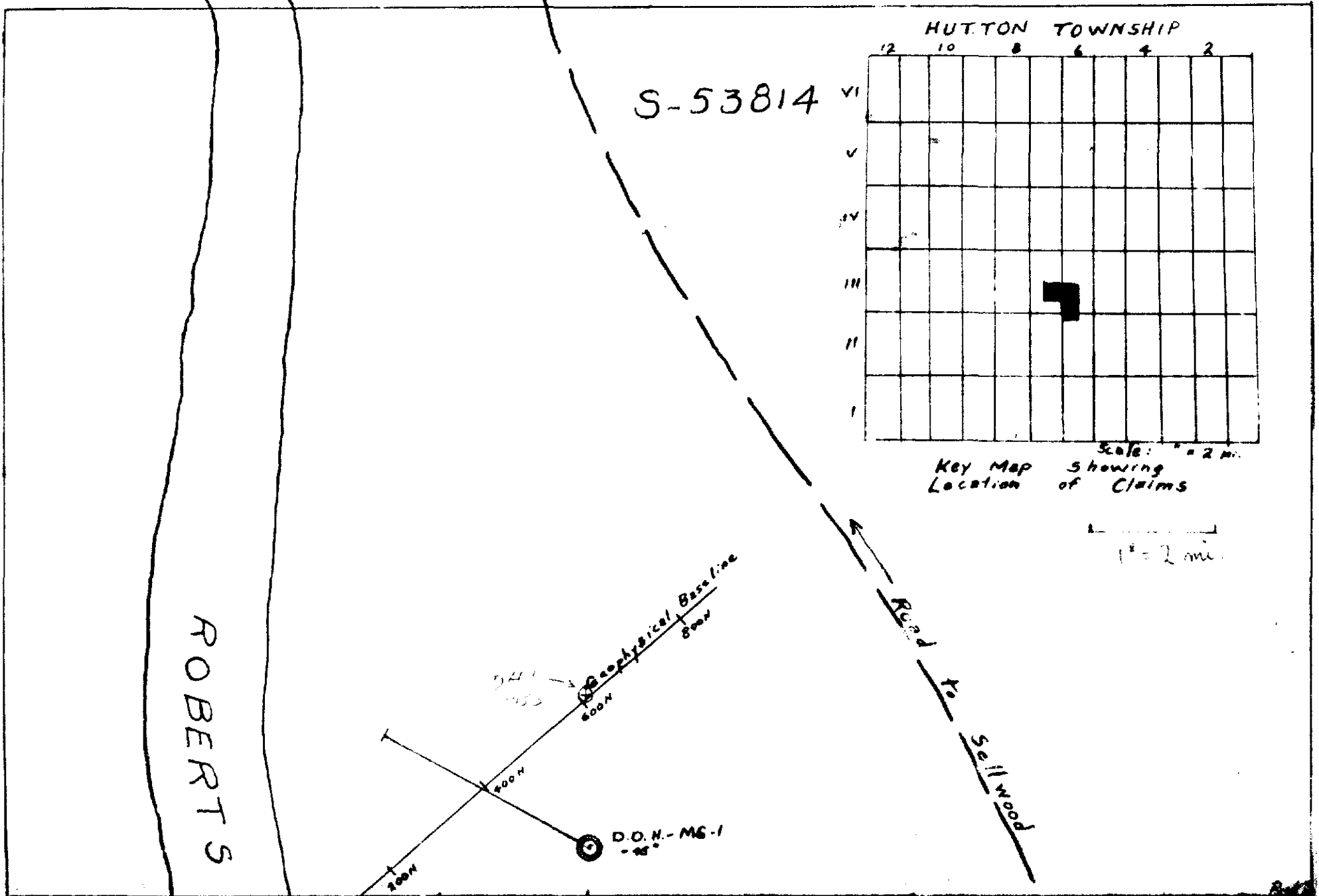


SEE ACCOMPANYING
MAP(S) IDENTIFIED AS

HUTTON-0011-A1, #1

LOCATED IN THE MAP
CHANNEL IN THE FOLLOWING
SEQUENCE (X)





LOT 7 HUTTON TWP LOT 6
PLAN OF L. LESLIE CLAIMS

Showing Location & Horizontal Projection
 of Diamond Drill Hole.

HUTTON-0011-A1-#1

