

2.22310

GORDON A. BARRY
CLN. 105291

ASSESSMENT WORK--HUTTON TWP.

Work was performed in the southern portion of claim S 1237358 of Hutton Twp. in the Sudbury District. The work site is located approximately 60m. west of the #4 post of claim S1237357.

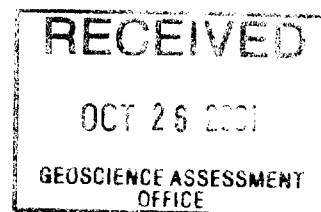
Day 1.--Stripping--Gordon Barry, Michael Barry, Christopher Barry
An area, approximately 5 feet wide was stripped manually around existing trench # 1.

Day 2.--Stripping--Gordon Barry, Alan Barry, Christopher Barry
An area approximately 5 feet by 10 feet was manually stripped just to the north-west of existing trench #2.
Drilling--Michael Barry
7 2-foot holes were drilled in Area A in trench #1.
7 2-foot holes were drilled in Area B NW of trench #2.

Day 3.--Blasting--Alan Barry loaded and blasted the drilled holes
Guarding--Gordon Barry, Michael Barry, Christopher Barry
Trenching--Gordon Barry, Alan Barry, Michael Barry, Christopher Barry
Area A--The existing trench (#1) was enlarged from 3' x 3' x 3' an additional 8' x 4' x 3' to the north-west.

Day 4.--Trenching--Gordon Barry, Alan Barry, Michael Barry, Christopher Barry
Trenching on Area A was completed.
Area B--An area 14' x 4' x 3' was trenched just to the north-west of existing trench #2.

Day 5.--Trenching--Gordon Barry, Michael Barry
Trenching in Area B was completed.
Sampling--Gordon Barry
Samples were collected from Areas A and B. They have been sent away for assay purposes.



Gordon A. Barry
CLN. 105291

GEOLOGY

The property is underlain by massive mafic metavolcanic rocks (pillow basalts), poorly banded mafic to intermediate metavolcanic rocks, small pods of rhyolite breccia and felsic pyroclastic rocks. These units are in contact with pink Algoman granites to the south. The metavolcanic units have been intruded by two fairly small diabase dykes. In previous diamond drilling, iron formation has been encountered.

Massive and strongly disseminated sulphides are present within the metavolcanic rocks at the surface. Common sulphide minerals are pyrite, galena and sphalerite.

The property is immediately south of the formerly producing Moose Mountain Iron Mine. The mine hosted a sulphide horizon that contained appreciable zinc with some lead. This property is most likely a continuation of that same sulphide horizon. 1

Samples taken in 1992, produced assays of 6.8% to 7.9% zinc, 2.5 ounces of silver/ton, 32.32% lead and traces of gold. This property has been compared to a "Kidd Creek type deposit" .

I am awaiting the results of samples taken at this time.

1.--re: Prospecting report filed by H.V. Barry 1992

Gordon A. Barry
CLN. 105291

Partial Assay Results:

I phoned the lab in Swastika this morning and obtained the following results of the assays which were completed at this time. I will submit the official report when it becomes available to me.

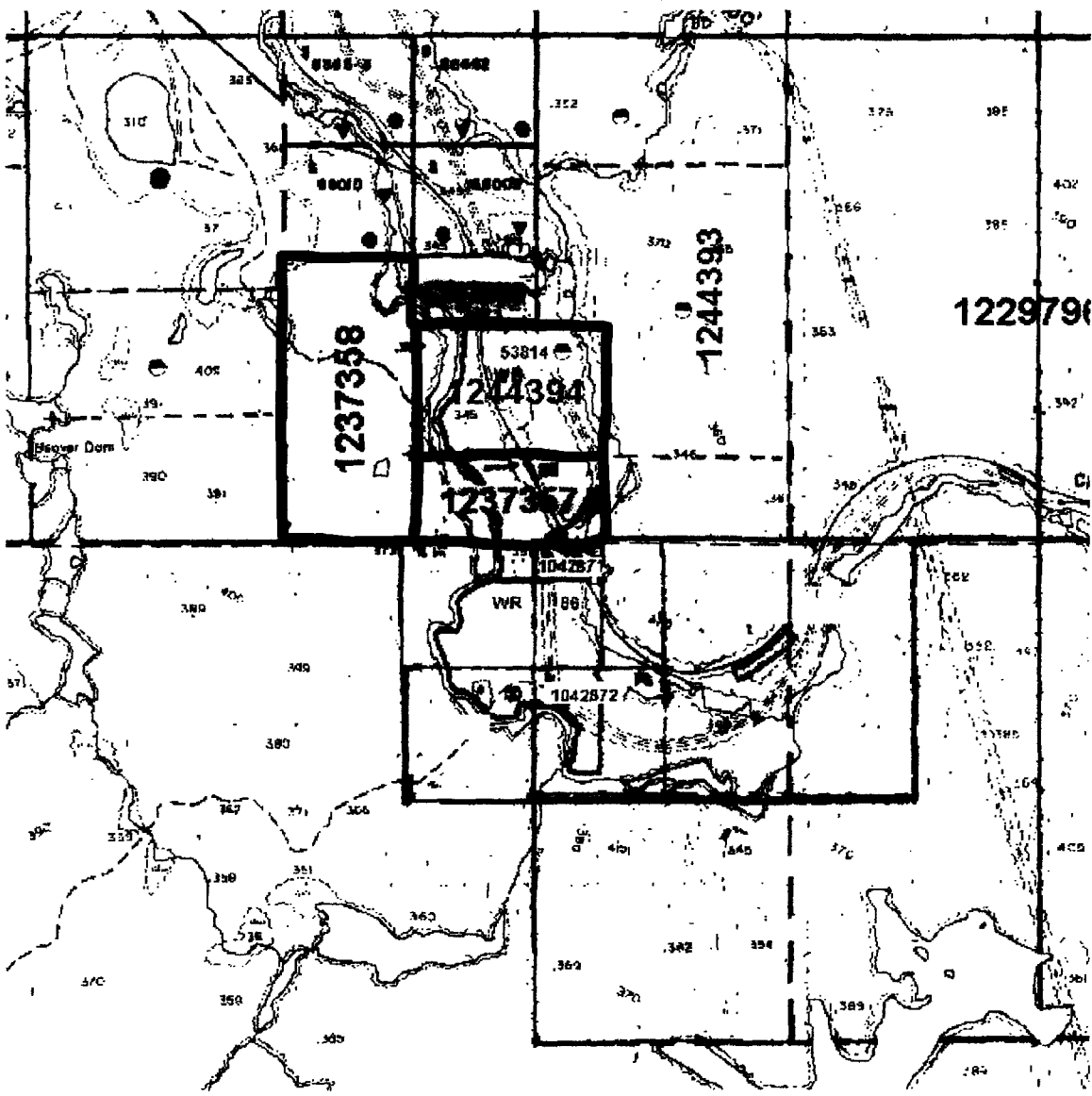
Au.--.001 oz/ton
Pt.--5 ppb.
Pa.--3 ppb.
Ag.--5.3 grams
Co.--0.012 %
Cu.--0.039 %
Ni.--0.005 %
Pb.--1.39%
Zn.--3.36 %

Gordon Barry
CLN. 105291

STATEMENT OF WAGES

<u>DATE</u>	<u>WORKER</u>	<u>HOURS</u>	<u>WAGES</u>	<u>TOTAL</u>
Sept. 16/01	Gord Barry	8am-5pm	\$150/day	\$ 450.00
	Mike Barry	8am-5pm	150/day	
	Chris Barry	8am-5pm	150/day	
Sept. 22/01	Gord Barry	8am-5pm	\$150/day	\$ 600.00
	Alan Barry	8am-5pm	150/day	
	Mike Barry	8am-5pm	150/day	
	Chris Barry	8am-5pm	150/day	
Sept. 23/01	Gord Barry	8am-5pm	\$150/day	\$ 600.00
	Alan Barry	8am-5pm	150/day	
	Mike Barry	8am-5pm	150/day	
	Chris Barry	8am-5pm	150/day	
Sept. 24/01	Gord Barry	8am-5pm	\$150/day	\$ 600.00
	Alan Barry	8am-5pm	150/day	
	Mike Barry	8am-5pm	150/day	
	Chris Barry	8am-5pm	150/day	
Sept. 25/01	Gord Barry	8am-5pm	\$150/day	\$ 300.00
	Mike Barry	8am-5pm	150/day	
Total				<u>\$2550.00</u>

hutton (3166x2399x256 gif)

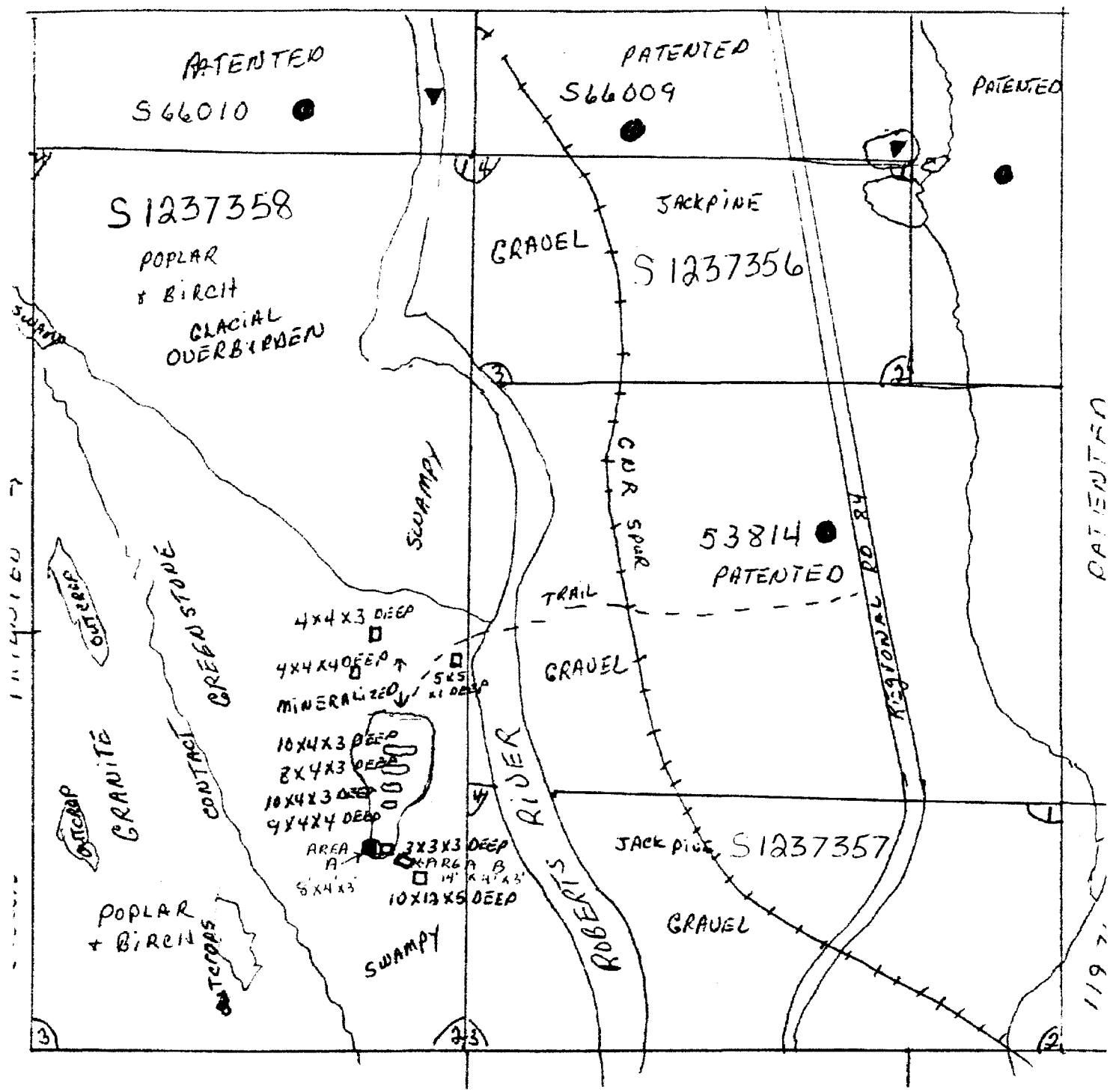
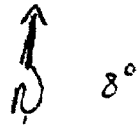


W 9470 00211

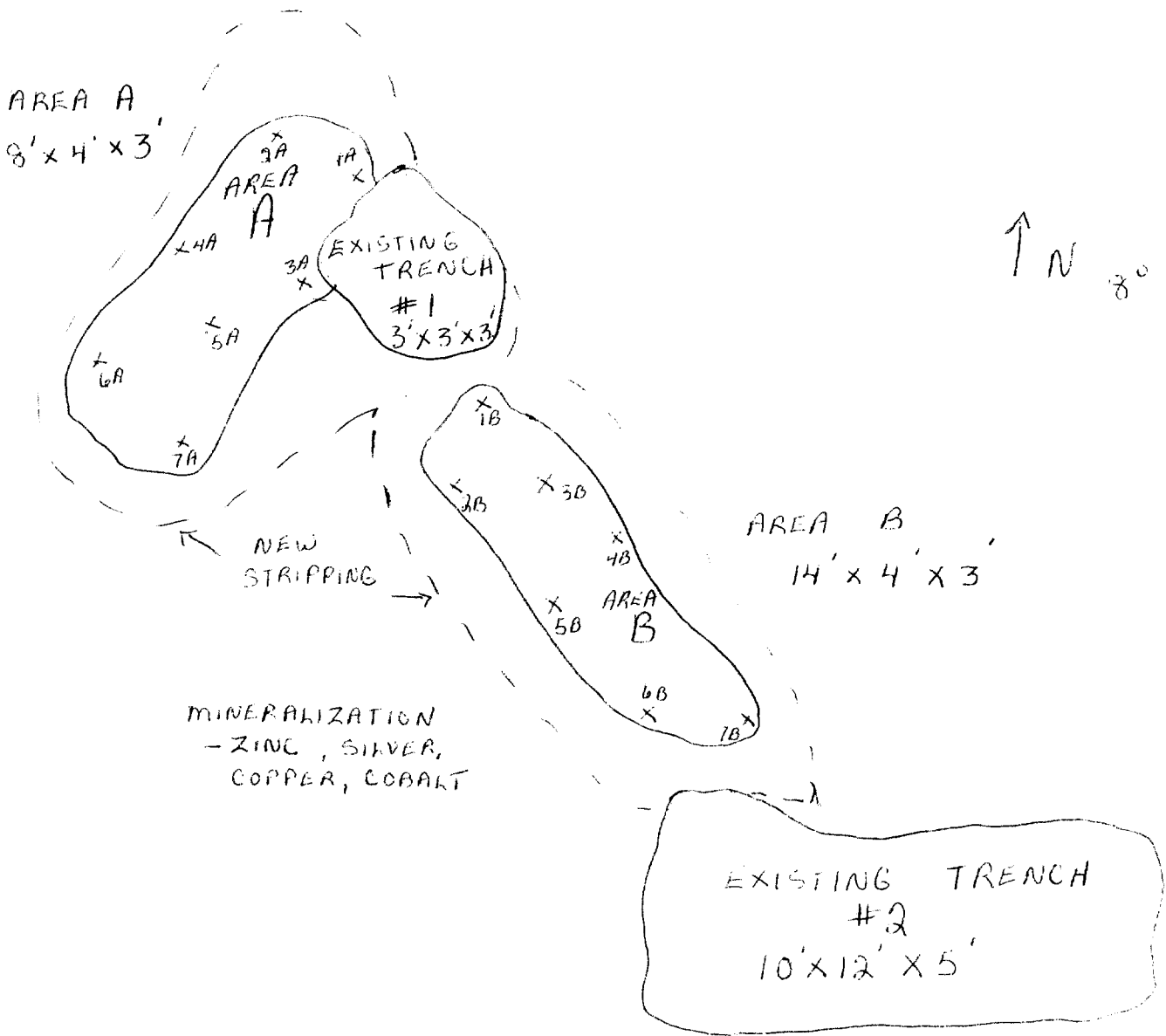
CLAIMS S 1237356
S 1237357
S 1237358

HUTTON TWP

SCALE 1 - 5000



HUTTON TWP.

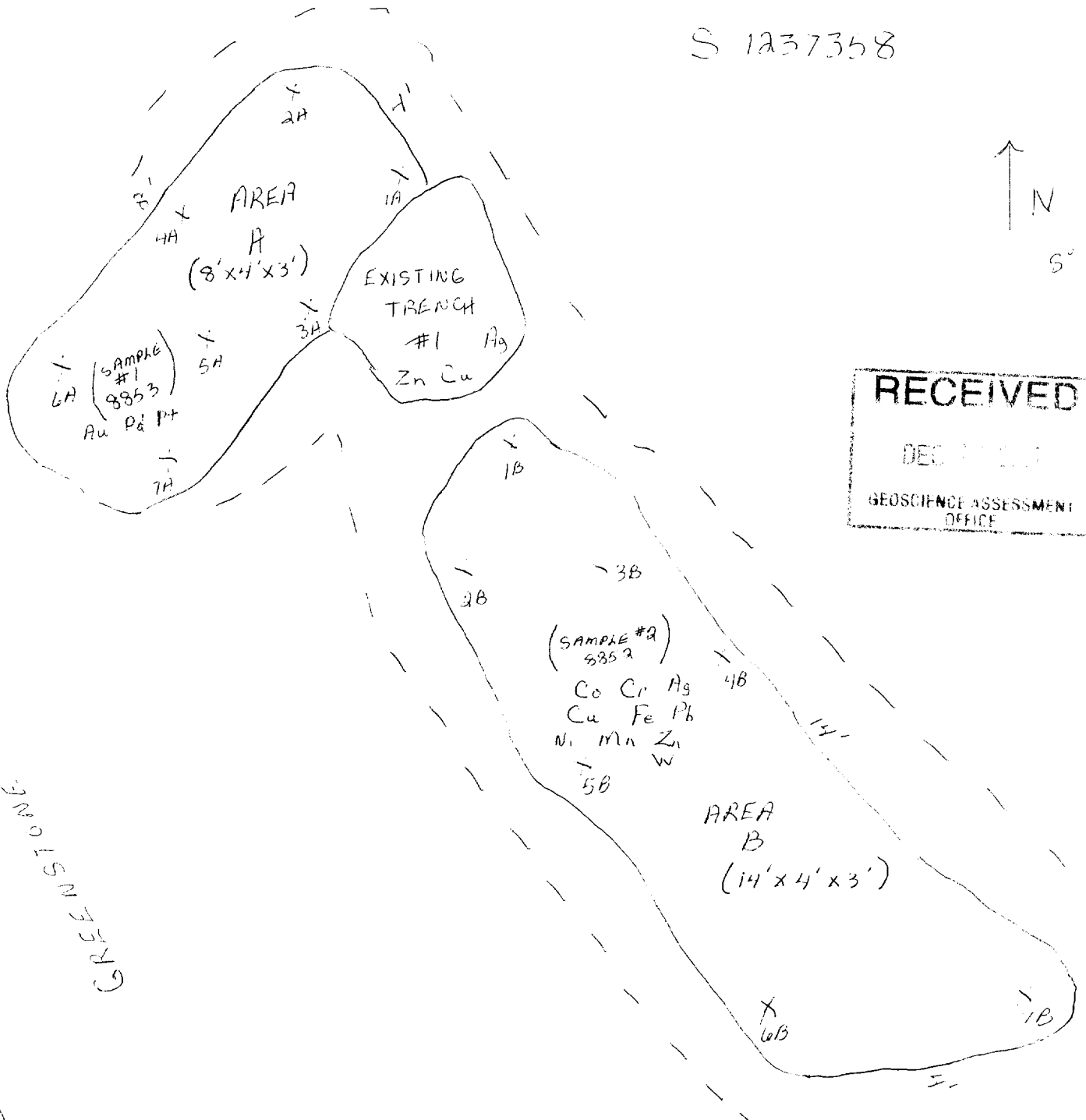
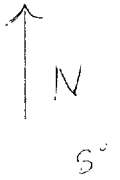


NOT TO SCALE
NEW STRIPPING - - - -
DRILL HOLES X X
1A 2A

S 1237358

Hutton Twp.

S 1237358



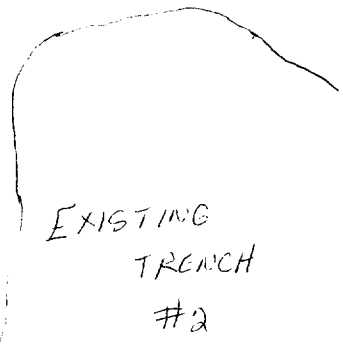
RECEIVED
 DEC 11 2007
 GEOSCIENCE ASSESSMENT
 OFFICE

GREEN STONE
 CONTOUR

1 cm = 12" (1 FT.)

SAMPLE #1 - 8853 (FOR ASSAY) (ONLY TESTED FOR AU, PT, PA)
 SAMPLE #2 - 8852 (FOR ASSAY)

WORK AREAS A B
 NEW STRIPPING
 DRILL HOLES (2 FT) - 1A, 2B ETC.





Established 1928

Swastika Laboratories Ltd

Assaying - Consulting - Representation

Assay Certificate

1W-2378-RA1

Company: **GORDON BARRY**

Date: OCT-19-01

Project:

Attn: G. Barry

We hereby certify the following Assay of 2 Rock samples submitted OCT-17-01 by .

Sample Number	Au oz/tonne	Ag g/tonne	Co %	Cu %	Ni %	Pb %	Zn %	Pt PPB	Pd PPB	Multi Element
#1	<0.001	-	-	-	-	-	-	<5	3	Results
#2	<0.001	5.3	0.012	0.039	0.005	1.39	3.36	-	-	to follow

Certified by *J. Doonan*

GORDON BARRY

Attention: G. Barry

Project:

Sample: Rock

Swastika Laboratories Ltd.

1 Cameron Ave., Swastika, Ontario, P0K 1T0

Tel: (705) 642-3244 Fax: (705) 642-3300

Report No : 1W2378 RJ

Date : Nov-01-01


MULTI-ELEMENT ICP ANALYSIS

Aqua Regia Digestion

Sample Number	Ag ppm	Al %	As ppm	Ba ppm	Be ppm	Bi ppm	Ca %	Cd ppm	Co ppm	Cr ppm	Cu ppm	Fe %	K %	Mg %	Mn ppm	Mo ppm	Na %	Ni ppm	P ppm	Pb ppm	Sb ppm	Sc ppm	Sn ppm	Sr ppm	Ti %	V ppm	W ppm	Y ppm	Zn ppm	Zr ppm
#2	3.0	0.42	<5	10	<0.5	10	0.18	>100	114	214	389	14.05	0.15	0.38	265	<2	0.04	77	500	>10000	5	1	<10	<1	0.07	53	740	1	>10000	12

Up to 100 ppm Cr contamination due to sample grinding.

A .5 gm sample is digested with 5 ml 3:1 HCl/HNO3 at 95c for 2 hours and diluted to 25ml with D.I.H2O.

Signed: 

Date: 2002-JAN-14

GEOSCIENCE ASSESSMENT OFFICE
933 RAMSEY LAKE ROAD, 6th FLOOR
SUDBURY, ONTARIO
P3E 6B5

GORDON ALBERT BARRY
1327 ARVO STREET
SUDBURY, ONTARIO
P3A 3P3 CANADA

Tel: (888) 415-9845
Fax: (877) 670-1555

Submission Number: 2.22310
Transaction Number(s): W0170.30985

Dear Sir or Madam

Subject: Approval of Assessment Work

We have approved your Assessment Work Submission with the above noted Transaction Number(s). The attached Work Report Summary indicates the results of the approval.

At the discretion of the Ministry, the assessment work performed on the mining lands noted in this work report may be subject to inspection and/or investigation at any time.

If you have any question regarding this correspondence, please contact LUCILLE JEROME by email at lucille.jerome@ndm.gov.on.ca or by phone at (705) 670-5858.

Yours Sincerely,



Ron Gashinski
Senior Manager, Mining Lands Section

Cc: Resident Geologist

Gordon Albert Barry
(Claim Holder)

Assessment File Library

Gordon Albert Barry
(Assessment Office)

