



41115NW0113 0011C1 PARKIN

010

PARKIN TOWNSHIP REPORT #17

This file contains work performed by R. M. Elliot on claim:

S. 58990

Holes #1; 69.0 Nov., 1957

#2; 73.0 Nov., 1957

#3; 79.0 Nov., 1957

SDH 221.0

DIAMOND DRILL RECORD

Hole No. 1 Sheet No. 1

Property R.M. Elliot Group, Parkin Trp.
 Location Collar is 740 ft. at a bearing of S-65°-W. from No. 1 post
 Latitude S. 50990
 Departure 243° az. (S-63°-W.)
 Bearing 243° az. (S-63°-W.)

Dip
 -72° at collar

Total Footage 69.0

Elev. Collar 20.9
 Datum Small adjoining pond
 Date Started Oct 31, 1957
 Date Completed Nov 1, 1957
 Drilled by Newmont Mining Corp. Ltd.
 Logged by R.W. Baker

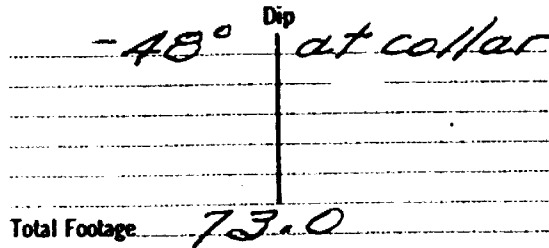
Footage		Formation	Sample Number	Sample Footage	Sample Width	Gold Sample	Gold Sludge	Remarks
From	To							
0.0	69.0	<p>Medium green to dark green intermediate lava. Strongly chloritized and containing threads and small patches of quartz - carbonate. Occasional speck of pyrite.</p> <p>From 56.0 to 69.0, rock is speckled with fine carbonate.</p> <p>Minor fracturing at 30° to core.</p> <p style="text-align: center;"><u>End of hole at 69.0</u></p> <p style="text-align: center;"><u>Recovery: 99%</u></p>		No samples.				

Date of Examination November 7, 1957 R.W. Baker, P. Eng.

DIAMOND DRILL RECORD

Hole No. 2 Sheet No. 1

Property R.M. Elliot Group, Parkin Trp.
 Location Collar lies 14 feet south of Hole no. 1 which is at a bearing of S-65° W from No. 1 post S. 58990 at 740 feet.
 Latitude 249° az (S-68° W.)
 Departure 249° az (S-68° W.)
 Bearing 249° az (S-68° W.)



Elev. Collar 21.0
 Datum Small adjoining pond
 Date Started Nov. 2, 1957
 Date Completed Nov. 4, 1957
 Drilled by Newmont Mining Corp. Ltd.
 Logged by R. M. Baker

Footage		Formation	Sample Number	Sample Footage	Sample Width	Gold Sample	Gold Sludge	Remarks
From	To							
0.0	50.5	Medium green to dark green, intermediate lava; chloritic, containing scattered quartz-carbonate threads & patches.						
50.5	66.2	Silicified intermediate lava, grading at intervals to aphanitic silica (cherty). Scattered seams and nets of fine pyrrhotite, sparse pyrite and chalcopyrite. Relict banding at 30° to core at some points.	1	50.5-55.0	4.5			
			2	55.0-60.0	5.0			
			3	60.0-65.0	5.0			
			4	65.0-66.2	1.2			
66.2	73.0	Light green intermediate lava, highly carbonatized in specule fashion. Fracturing at 45° & 60° to core.						
		<u>End of hole at 73.0</u>						
		<u>Recovery: 100%</u>						

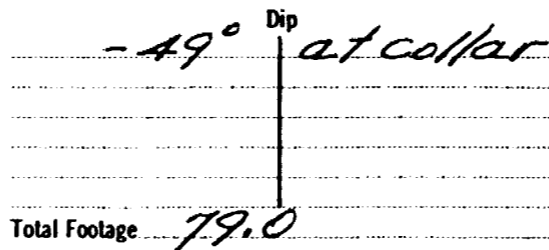
Date of Examination November 7, 1957

R. M. Baker, P. Eng.

DIAMOND DRILL RECORD

Hole No. 3 Sheet No. 1

Property R.M. Elliot Group, Parkin Twp.
 Location Collar is 24 ft north of collar of Hole 1 which is 740 ft at a bearing of S 65° W
 Latitude from No. 1 post S. 58 990
 Departure 248° at (S 68° W).
 Bearing

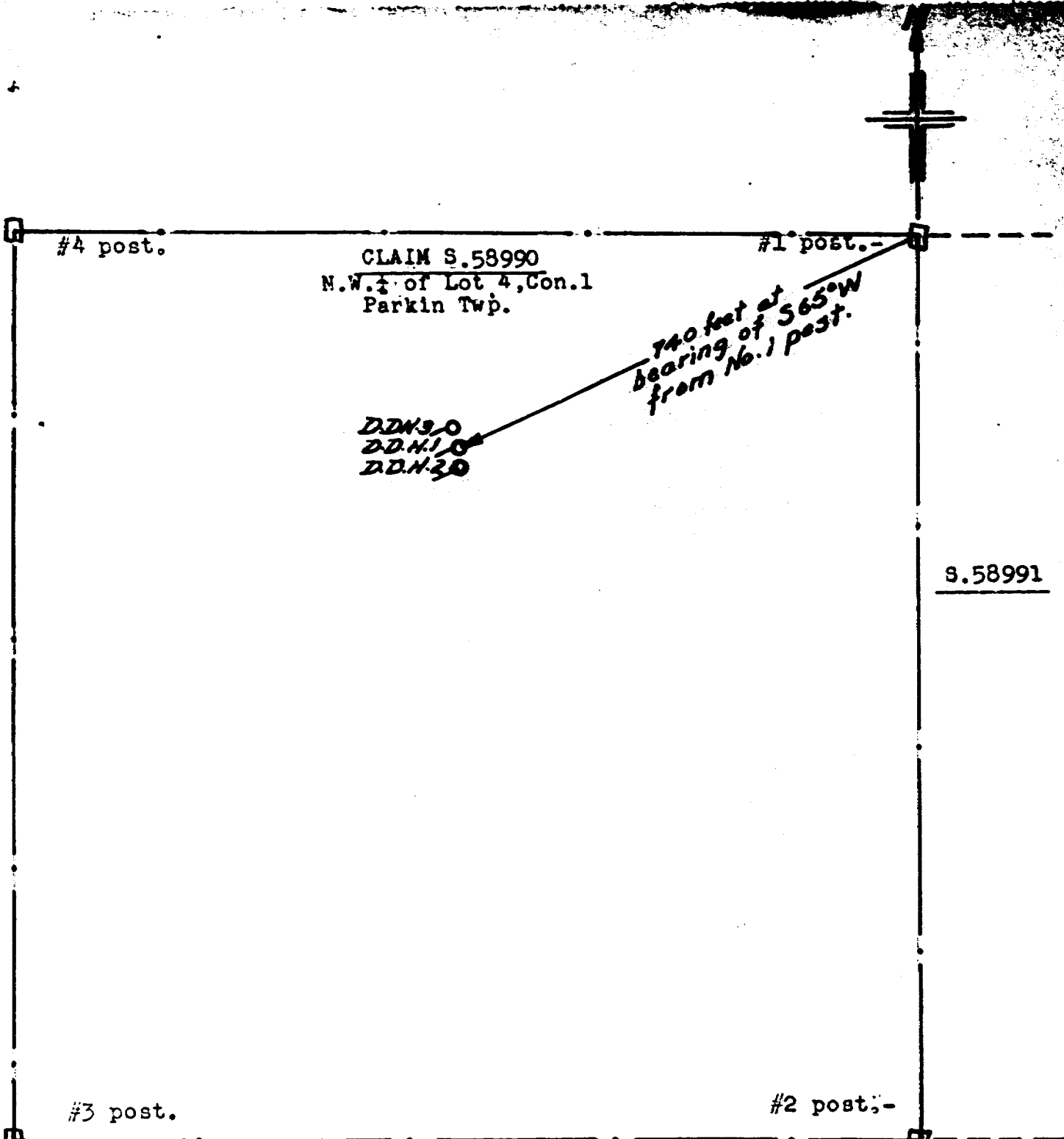


Elev. Collar 15.0
 Datum Small air joining pond
 Date Started Nov. 4, 1957
 Date Completed Nov. 6, 1957
 Drilled by Hendon Mining Corp. Ltd.
 Logged by R.W. Baker

Footage		Formation	Sample Number	Sample Footage	Sample Width	Gold Sample	Gold Sludge	Remarks
From	To							
0.0	68.0	Light green to medium green intermediate lava. Numerous quartz-carbonate threads & patches; occasional pink carbonate seam.		No Samples				
68.0	74.5	Silicified intermediate lava. Occasional thread of fine pyrrhotite; sparse pyrite.						
74.5	79.0	Light green intermediate lava, carbonatized in fine specules.						
<p><u>End of hole at 79.0</u> <u>Recovery: 99.5%</u></p>								

Date of Examination November 7, 1957

R.W. Baker, P. Eng.



CLAIM S. 58990
 N.W. 1/4 of Lot 4, Con. 1
 Parkin Twp.

740 feet at
 bearing of S65°W
 from No. 1 post.

DDH 0
 DDH 1
 DDH 2

S. 58991

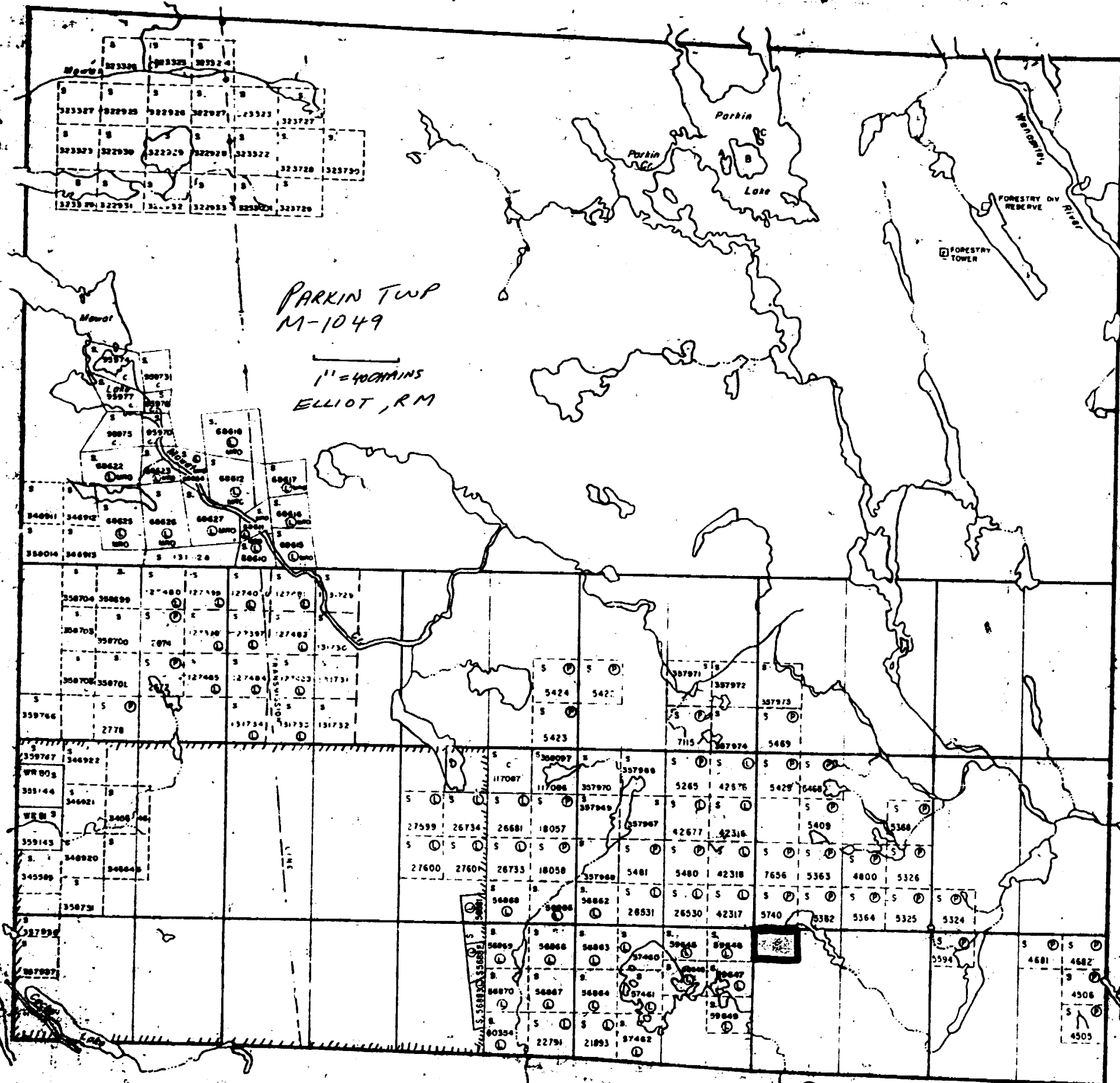
D.D.H.#1.	D.D.H.#2.	D.D.H.#3
Angle. 72 degrees.	Angle. 48 degrees.	Angle. 49 degrees
Bearing 243 degrees az.	Bearing 248 degrees az.	Bearing 248 degrees az.
Depth. 69.0 ft.	Depth. 73.0 ft.	Depth. 79.0 ft.
Start. Oct. 31. 1957	Start. Nov. 2. 1957	Start. Nov. 4. 1957
Finish. Nov. 1. "	Finish. Nov. 4. "	Finish. Nov. 6. "

Total footage drilled. 221.0 ft.

Scale. 1 inch to 200 feet.

Hutton Twp. M-944

Aylmer Twp. M-641



12 11 10 9 8 7 6 5 4 3 2 1