

DIAMOND DRILLING



411155E0062 0034 RATHBUN

010

TOWNSHIP: Rathbun

REPORT No.: 20

WORK PERFORMED BY: New Augarita Porcupine Mines Ltd.

<u>CLAIM No.</u>	<u>HOLE No.</u>	<u>FOOTAGE</u>	<u>DATE</u>	<u>NOTE</u>
S 608355	84-1	331	Mar/84	(1)
S 608354	84-2	224	Apr/84	(1)
S 608355	84-3	690	Apr/84	(1)
S 608355	84-13	154	June/84	(1)
	<u>4 DH</u>	<u>1399 FT</u>		

NOTES: (1) #2-85

New Augarita Porcupine Mines Limited

DIAMOND DRILL HOLE 84-1

LOCATION: Rathbun Twp.
Claim # S 608355

LATITUDE: L14N
DEPARTURE: 4+10E

BEARING N60W (Az 300°)
ANGLE DIP: -65°

STARTED: March 25/84

FINISHED: March 28/84

LOGGED BY: *J.C. Archibald*
J.C. Archibald

FROM	TO	REMARKS	SAMPLE NO	SAMPLE LENGTH	Au OZ./t		
0	2.0'	CASING- No Core Recovery					
2.0	6.0'	GREYWACKE- Sedimentary rock with carb. fracture filling + odd cubic pyrite crystal diss. throughout, mudseam with banding observed, core broken, fragmented					
6.0	17.0'	Breccia Zone- yellowed, altered, silicified carb. breccia with disseminated py all thro + along fractures, around fragments- core missing, blocky 6-17': 4 feet in trays-sulphide rich section washed out ?					
17.0	27.0	Greywacke- grey, f.g., with glassy frags. in f.g. groundmass, core fractured, some banding @ 45° to c.a. (mud flow) from 22 to 27': greywacke with carb. amygdals, fragmented then alters to light silicified, bleached seds, cherty, fractured with py filling (less 2%) to 27'	1-1	11' (?)	Tr.		
27.0	59.0	Breccia Zone- Silicified, altered: upper contact (3') is cherty recrystallized to granitic looking, massive with odd incl. of greywacke (1.5' frag.) then becomes v.f.g., glassy, yellowed with py in matrix from 38 to 46', then blebs of chlorite + fracture filling with chlorite from 46 to 54' spotted look, spericules from 54 to 59' very fragmented, fractured @ 35° to core axis with lower contact @ 45° 27.0-30.0: upper contact	1-2	5.0'	Tr.		
			1-3	3.0	Tr.		

New Angarita Porcupine Mines Limited

DIAMOND DRILL HOLE 84-1

LOCATION: Rathbun Twp.

LATITUDE:

BEARING:

STARTED:

DEPARTURE:

ANGLE DIP:

FINISHED:

LOGGED BY: *Jca*

FROM	TO	REMARKS	SAMPLE NO	SAMPLE LENGTH	Au Oz.
		33.0-36.0': alteration around fragment of gywk.	1-4	3.0'	.005
		36.0-41.0 : py diss. in matrix (less 2%)	1-5	5.0'	Tr.
		41.0-46.0': " " " "	1-6	5.0'	Tr.
		46.0-50.0': less min., chlorite blebs	1-7	4.0'	Tr.
		50.0-55.0': lower contact of chloritic zone	1-8	5.0'	Nil
		55.0-60.0 : up to 50% py from 57-58', lower contact	1-9	5.0'	Tr.
59.0	331.0	GREYWACKE- fine grained, with odd fracture filled w. carb., odd py cube in matrix: some sections with mudseams and localized slumping, carb.-rich, silicified with diss. py			
		62.0-67.0': diss. py (less 5%), altered greywacke	1-10	5.0'	Tr.
		67.0-72.0': " " " "	1-11	5.0'	Nil
		82.0-84.0': " Py (-20%) in frag. grwke.	1-12	2.0'	Nil
		After 80' fractures contain odd cube py + carb., hairline fractures + odd pebble suspended in groundmass			
		122-123.0': Bleached, with diss. py along fract.	1-13	1.0'	Nil
		171-172': bleached, brecciated w. py+hem., rusty yellowed	1-14	1.0'	Nil
		182-183: 1/4" carb. vein with pyrite @ 10° to c.a.	1-15	1.0'	Tr.
		After 200' odd carb. fracture filling, rusty @ 30-50° to c.a., odd bleb or cube py susp. in seds., + odd pebble up to 1 1/4" susp. in groundmass, observed py around rims, bleaching, and higher py content in granitic-like pebbles			
		222-223': diss. Py along carb. fractures (1/4")+ in pebbles	1-16	1.0'	Nil
		283.5-285.0': sulphides in fine fractures (1/16")	1-17	1.5'	Nil

New Augarita Porcupine Mines Limited:

DIAMOND DRILL HOLE 84-1

LOCATION: Rathbun Twp.

LATITUDE:
DEPARTURE:BEARING:
ANGLE DIP:STARTED:
FINISHED:
LOGGED BY *Jca*

FROM	TO	REMARKS	SAMPLE NO	SAMPLE LENGTH			
		297-298.0': brecciated greywacke with sil.granitic filling + diss. py	1-18	1.0'	Nil		
		312-317.0': py in fractures 1/8" @ 30° to c.a. @ 312.5, 315.5 + brecc. core from 315-317'w. carb. and py in fractures	1-19	5.0'	Nil		
		After 290' core is greywacke with larger pebbles susp. in groundmass (up to 1.5") often pebbles are sulph. rich or rimmed by py, cubes py all thro core (less 1%) with fine fractures filled w. carb., bleached					
		Sample of Splitting rejects:	1-20				
	331.0	END OF HOLE Test @ 332' was -70°			Tr.		

New Augarita Porcupine Mines Limited

DIAMOND DRILL HOLE 84-2

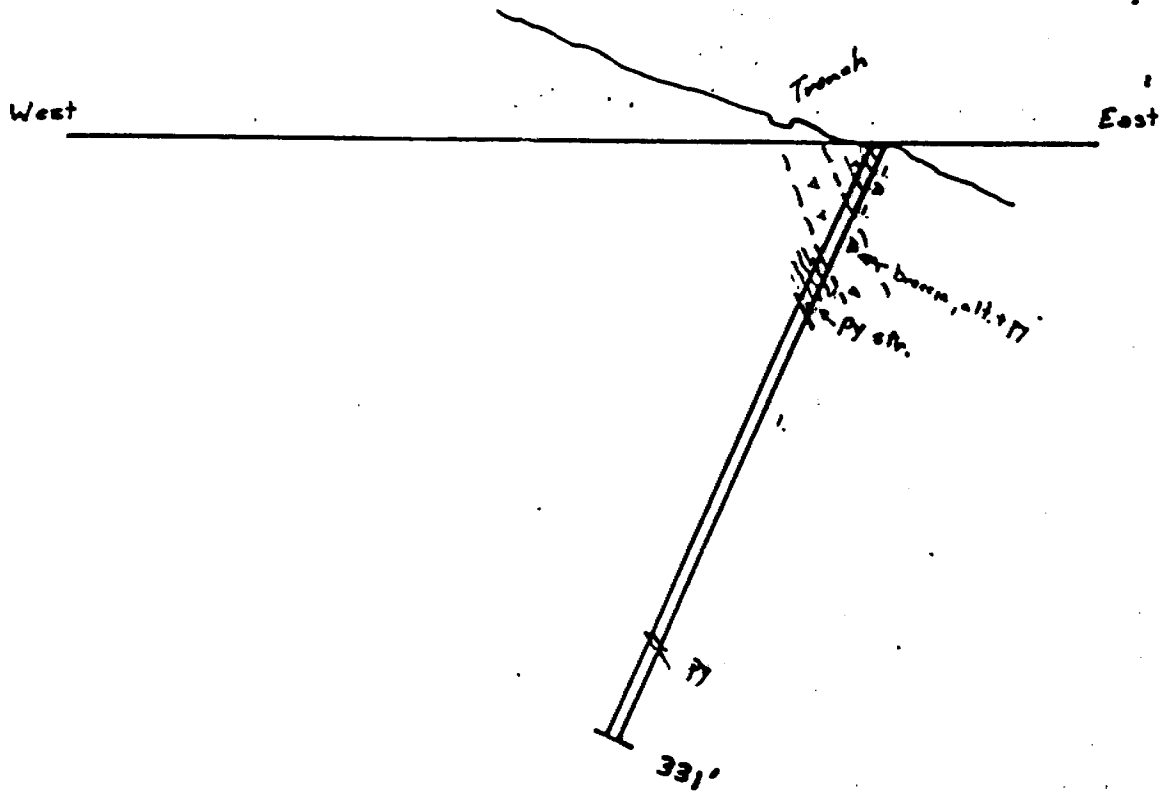
N.E. Crystal Vein LATITUDE: See loc. plan BEARING:
 LOCATION: Rathbun Twp. DEPARTURE: ANGLE DIP: vert.
 Claim # S608354 No Test Taken

STARTED April/84

FINISHED: April/84

LOGGED BY: J.C. Archibald

FROM	TO	REMARKS	SAMPLE NO	SAMPLE LENGTH			
0	6.0'	CASING- No Core Recovery					
6.0	224.0'	GABBRO- Intrusive sill(?), massive, c.grained with odd fracture filled with carbonate, odd band of mafic rich material (biotite-amphibolite) @ all angles to c.a. - After 45' gets finer grained, less felsic material in groundmass (darker) with odd lense of qtz. @ mainly 45° to c.axis (ie. @ 53' (1"), 54' (1/8"), 64' (1/8") - At 68' inclusion of sedimentary rock (3" @ 45° to c.a.) " 70' " " " (2" @ 30° to c.a.) - After 80' more felsic rich sections/segregation of gabbro minerals- alt.? 90'-91.5': odd grain py in felsic rich section 96'-98': odd cube py dissem. in qtz stringer @ 97.5' @ 45° to c.a. From 115' to 118' increased fracturing with carb.-chlorite filling @ 45-60° to c.a., not mineralized 175-176.5: cubic py in qtz.-carb. stringers @ 176' (1" wide @ 45° to c.a.) less 1% 181-182': qtz.-carb. stringers @ 70° to c.a.-re-crystallized, c.g. with chlorite schist on wall 223.-224.0': 1/4" qtz. vein with carb. alt. along walls, no min.					
224.0.		END OF HOLE No Test Taken					



DH 84-1

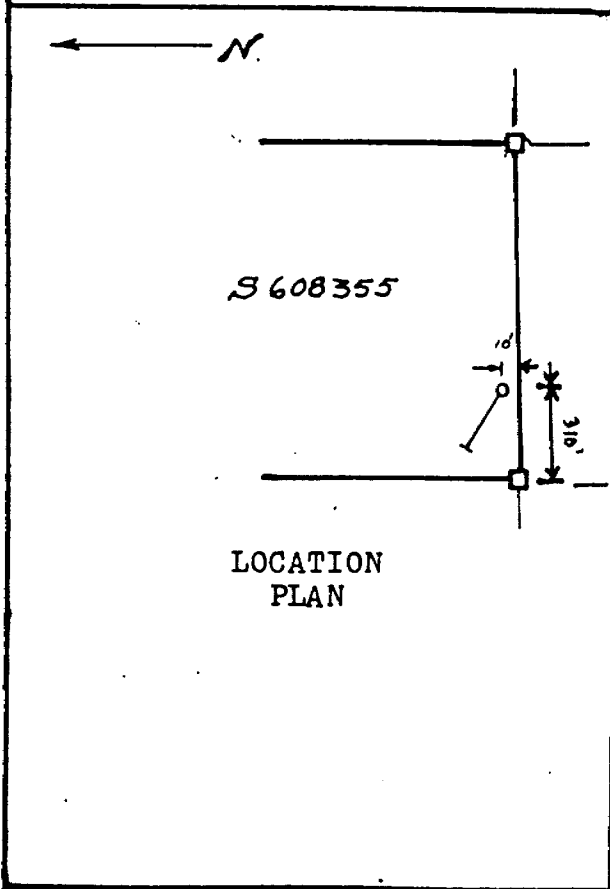
New Augarita Porcupine Mine Rathbun Twp.

Scale

1 in. = 100 ft.

LEGEND

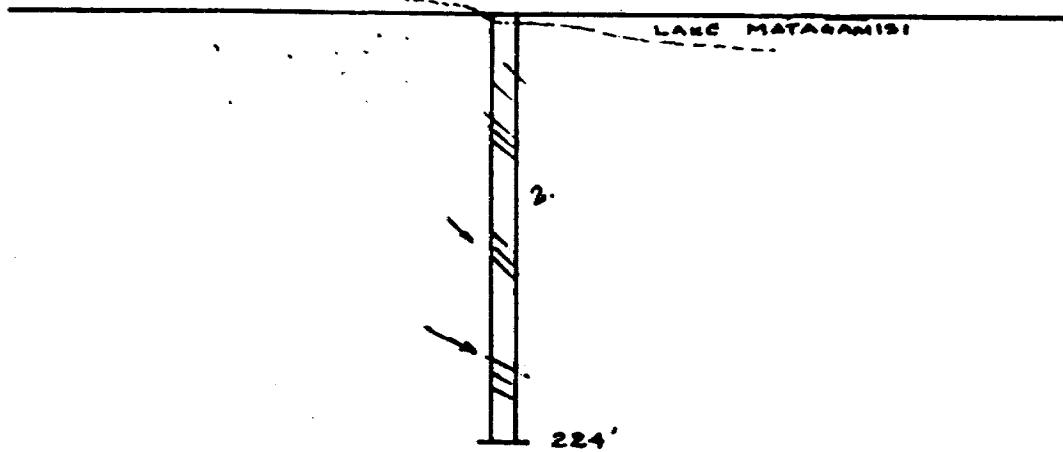
- 1 - Sediments: greywacke, qtz. arenites, arkoses
- 2 - Quartz Gabbro intrusive
- 3 - qtz.-carb. Breccia-diatrem
- mineralization



LOCATION
PLAN

20

East



DH 84-2

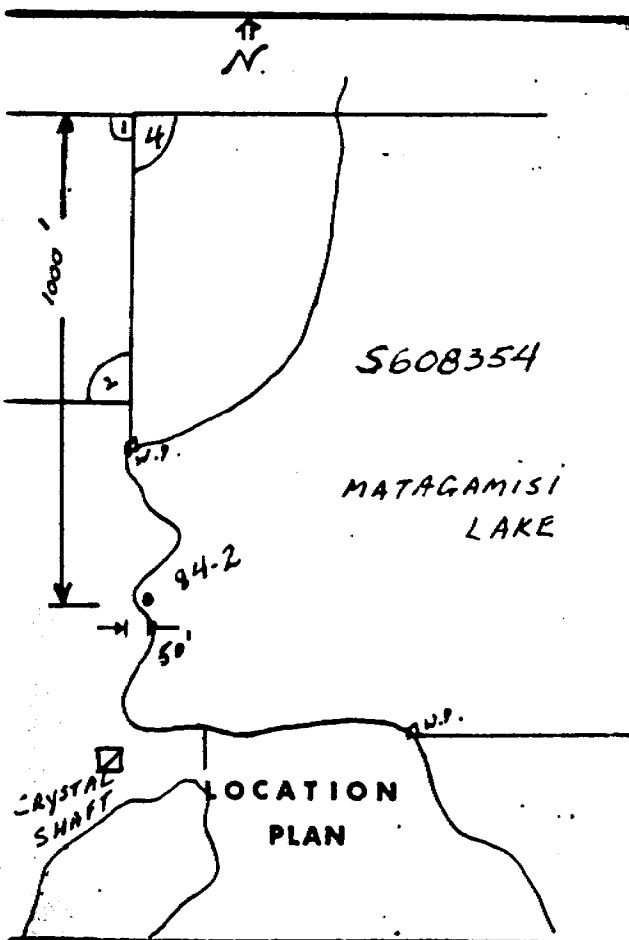
New Augarita Porcupine Mines Rathbun Twp.

Scale

1 in. = 100 ft.

1" = 100'
LEGEND

- 1 - Sediments: greywacke, qtz. arenites, arkoses
- 2 - Quartz Gabbro intrusive
- 3 - qtz.-carb. Breccia-diatreme mineralization



PAGE: 1 of 4 New Augarita Porcupine Mines Limited
DIAMOND DRILL HOLE 84 - 3

STARTED: April 2, 1984
FINISHED: May 6, 1984

LOCATION: RATHBUN TWP. BEARING: A₂-260°
SUDBURY AREA Claim # 608355 DEPARTURE: 3+50 E ANGLE DIP: -45° @ start
-53° @ 592.0'

LOGGED BY: J.C. Archibald

OM	TO	REMARKS	SAMPLE NO	SAMPLE LENGTH	AU OZ/TON	NI %	Pt. OZ./t
0	7.0	CASING - No core recovered - Sludge sample taken of weathered sulphides	3-1	5.0'	.14	.08	.002
7.0	8.0	SEDIMENTS - brecciated, fragmented with bleaching along fractures, poorly mineralized	3-2	1.0	.005	.02	.002
8.0	14.0	SULPHIDE ZONE - massive to infilled around sulphide fragments 8.0 - 10.0, pyrite, pyrrhotite breccia, clean sulphides filled around sulphide fragments up to 1-1/2" in size - up to 90% sulphides. 7.0 - 10.0 Sample 10.0 - 14.0, evenly distributed massive pyrite-pyrrhotite up to 80% of core content. Contact with sediments (silicified) at 45° to core axis	3-3	3.0	.09	.08	.003
14.0	29.0	SEDIMENTS - brecciated grey wacke, siliceous, with fractures filled with sulphides and carbonate, grey, homogenous with odd pebble, jointing at vertical to 80° West, bedding at 60° East to vertical. 14.0 - 18.0, stringers of pyrite, pyrr. in sediments 18.0 - 24.0, " approximately 1% 24.0 - 29.0, stringers of " " "	3-4	4.0	.02	.05	.005
			3-5	4.0	Tr.		
			3-6	6.0	Tr.		
			3-7	5.0	Tr.		

New Augarita Porcupine Mines Limited

DIAMOND DRILL HOLE 84 - 3

LOCATION: RATHBUN TWP.
SUDBURY AREALATITUDE:
DEPARTURE:BEARING:
ANGLE DIP:STARTED:
FINISHED:
LOGGED BY: *Jca*

FROM	TO	REMARKS	SAMPLE NO	SAMPLE LENGTH	Au oz/ton
29.0'	592.0'	SEDIMENTS - silicified, altered (possible carbonate-rich yellow, bleached colour) with felsic to magnetite euhedral crystal (replaced and disintegrated) chlorite filling and pyrite blebs and lenses after 50'			
		29.0 - 34.0, altered carbonate breccia up to 2% py, po	3-8	5.0	Nil
		34.0 - 39.0, " " " "	3-9	5.0	Tr.
		39.0 - 44.0, " " " "	3-10	5.0	Nil
		44.0 - 49.0, " " " "	3-11	5.0	Nil
		49.0 - 54.0, pyrite-pyrrhotite, up to 25% of core, as stringers and disseminated all through	3-12	5.0	Tr.
		54.0 - 59.0, as above	3-13	5.0	Tr.
		59.0 - 64.0, " "	3-14	5.0	.01
		From 50.0 - 64.0, increased pyrite/pyrrhotite stringers (up to 1/2" wide) approx. 25% of core at 65-90° to core axis, darker, less altered, observed offset of 1" along vertical jointing of sulphide lenses. After 64.0 grades into dark grey greywacke/conglomerate with carbonate filled fractures and joints (hairline to 1/4") with alteration/bleaching along fractures, marbling effect of sediments due to slumping/mud seams. Sediments cut core @ 45° to C.A. (approx. 75°-90° to East); jointing cuts core @ 20°-30° (approx. 90°-75° to West).			
		64.0 - 69.0, footwall of breccia zone, odd speck	3-15	5.0	Nil

New Augarita Porcupine Mines Limited
DIAMOND DRILL HOLE 84-3

LOCATION: RATHBUN TWP.
SUDBURY AREA

LATITUDE:
DEPARTURE:

BEARING:
ANGLE DIP:

STARTED:
FINISHED:
LOGGED BY: *JCA*

ROM	TO	REMARKS	SAMPLE NO	SAMPLE LENGTH	Au Oz./ton
		From 130 to 148' greywacke becomes f.g., crystalline to qtz. rich (qtz. arenitic) with odd pebble susp. in mass: no bedding observed: pebbles often min. 144-146.5': 1/4" carb. stringer + carb. in fractures + diss. py over 6" @ 145.5'	3-16	2.5'	Nil
		After 150.0', core is generally grey, crystalline greywacke with odd pebble suspended in matrix of massive wacke: odd carbonate rich fracture and joint filling at flat angle to core axis (30°) with marbled mud-flows and sedimentary contacts at 75° to 90° to core axis; carbonate rich vein @ 20° to core axis, alteration and bleached wall rock. <u>SAMPLE: 276.0' - 278.0'</u>	84-3-20	2.0'	.002
		From 318.0 - 425.0', lighter grey, blocky with carb. fracture filling increased from 364.0 to 373.0'			
		From 425.0 - 502.0', darker grey, mildly brecciated with disseminated pebbles all through, fractures filled with carbonate but poorly mineralized at 30° to 60° to C.A., blocky from 430' to 440'			
		From 502.0 - 519.0', increasingly brecciated with fracturing at 45° to core axis.			

New Augarita Porcupine Mines Ltd. Rathbun Twp.

PAGE: 4 of 4

DIAMOND DRILL HOLE 8'

LOCATION:

LATITUDE:
DEPARTURE:

BEARING:
ANGLE DIP:

STARTED:
FINISHED:
LOGGED BY: *J. C.*

FROM	TO	REMARKS	SAMPLE NO	SAMPLE LENGTH	Au oz/ton
		From 519.0 - 538.0', dark grey wacke, then grades into lighter bleached sediments.			
		From 538.0 - 592.0', lighter grey, bleached, altered sediments with increased fracturing and carb. filling to 592.0' - siliceous with quartz banding over 2 - 3' sections at 45° to C. A., increased brecciation with quartz filling after 580.0' and localized offsetting of fractures.			
		<u>SAMPLE: 558.0-563.0'</u>	84-3-30	5.0'	<.001
		<u>SAMPLE: 563.0 - 565.5'</u>	84-3-21	2.5'	.004
		quartz carb. breccia. :565.5- 570.0'	84-3-31	4.5'	<.001
		<u>SAMPLE: 578.0 - 582.0'</u>	84-3-22	4.0'	.008
		quartz carb. breccia in silicified sediments and 2% fine disseminated pyrite.			
		<u>SAMPLE: 583.0 - 588.0'</u>	84-3-23	5.0	.004
		silicified sediments, brecciated.			
		<u>SAMPLE: 588.0 - 592.0'</u>	84-3-24	5.0	.003
		silicified altered sediments with carbonate micro fractures.			
		<u>END OF HOLE</u>			
	592.0'	Test @ 592' was -53°			
		<u>Additional Samples:</u>			
		570.0- 575.0'-	84-3-32	5.0'	<.001
		575.0 - 578.0'-	84-3-33	3.0'	<.001

West

East

2. Sil

Tram

3.05/5'

alt. breccia

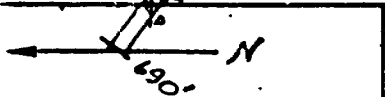
Seds. bedding

1. Sil.

Bedding

2. Sil. brecciated

.006/5'

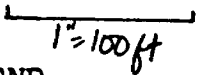


DH 84-3

New Augarita Porcupine Mines Rathbun Twp.

Scale

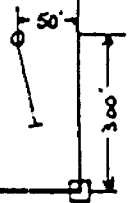
1 in. = 100 ft.



LEGEND

- 1. - Sediments: Massive wackes, orthoconglomerates, arkoses
- 2. - Quartz Gabbros: intrusive rock
- qtz.-carb. Breccia-diatreme ?

S608355



Handwritten signature

New Augarita Porcupine Mines Ltd. Rathbun Twp.

PAGE: 1 of 2

EXTENSION OF DIAMOND DRILL HOLE 84-3

LOCATION: Claim # 608355

LATITUDE:
DEPARTURE:

BEARING:
ANGLE DIP:

STARTED: June 15, 1984
FINISHED: June 16, 1984
LOGGED BY: J.C. Archibald

FROM	TO	REMARKS	SAMPLE NO	SAMPLE LENGTH	Au oz/ton
592.0'	690.0'	<p>From 592.0 to 612.0', core is silicified, altered Gowganda Sediment mudflows up to 90% quartz by volume, brecciated in places with quartz-carbonate filling and odd disseminated pyrite bleb all through, fractures at 45° to c.a., flows at 70° to c.a.</p> <p>592.0 - 597.0': up to 90% quartz with carb-chlorite fracture filling at 45° to c.a. -2% pyrite. <u>SAMPLE</u></p> <p>597.0 - 602.0': altered, dark blue staining along fractures. <u>SAMPLE</u></p> <p>602.0 - 607.0': same as above <u>SAMPLE</u></p> <p>607.0 - 610.5': " " <u>SAMPLE</u></p> <p>610.5 - 612.0': " " <u>SAMPLE</u></p> <p>From 612.0 to 649.0', darker grey sediments with pyrite along slips/fractures, fine-grained crystalline sediment bedding at 45° to c.a.</p>	84-3-43	5.0'	.001
			84-3-44	5.0'	<.001
			84-3-45	5.0'	<.001
			84-3-46	3.5'	<.001
			84-3-47	1.5'	<.001

New Augarita Porcupine Mines Ltd. Rathbun Twp.

PAGE: 2 of 2

EXTENSION OF DIAMOND DRILL HOLE 84-3

LOCATION:	LATITUDE: DEPARTURE:	BEARING: ANGLE DIP:	STARTED: FINISHED: June/84 LOGGED BY: <i>JCA</i> J.C. Archibald
-----------	-------------------------	------------------------	---

FROM	TO	REMARKS	SAMPLE NO	SAMPLE LENGTH	Au oz/ton
		626.0 - 631.0', test sample of carbonate fracture filling	<u>SAMPLE</u> 625-630 84-3-48	5.0'	<.001
			<u>SAMPLE</u> 633-638' 84-3-35	5.0'	<.001
			<u>SAMPLE</u> 638-643' 84-3-36	5.0'	<.003
		From 649.0 to 669.0', Siliceous Breccia Zone, up to 90% quartz content with pyrite/ pyrrhotite in fractures, seams up to 70% by content.	<u>SAMPLE</u> 643-648' 84-3-37	5.0'	<.001
		649.0 - 654.0':	<u>SAMPLE</u> 84-3-38	5.0'	.006
		654.0 - 659.0':	<u>SAMPLE</u> 84-3-39	5.0'	.001
		659.0 - 664.0':	<u>SAMPLE</u> 84-3-40	5.0'	.004
		664.0 - 669.0':	<u>SAMPLE</u> 84-3-41	5.0'	<.001
		From 669.0 to 690.0', odd carbonate filled fracture in dark grey, unaltered sediments bedding at 45° to c.a.	<u>SAMPLE</u> : 668-673" 84-3-42	5.0'	<.001
			<u>SAMPLE</u> : 673-678' 84-3-49	5.0'	<.001
690.0'		END OF HOLE (No Acid Test done)			

New Augarita Porcupine Mines Ltd. Rathbun Twp.

PAGE: 1 of 3

DIAMOND DRILL HOLE 84-13

STARTED: June 22, 1984

FINISHED: June 27, 1984

LOGGED BY: J.C. Archibald

LOCATION: RATHBUN TWP.
Claim #608355

LATITUDE: L 14 N
BEARING: 250°
DEPARTURE: 3+32 E
ANGLE DIP: -44°
85° S. of Line

FROM	TO	REMARKS	SAMPLE NO	SAMPLE LENGTH	Au. oz/ton
0.0	19.0'	<u>CASING</u> - No Core Recovery			
19.0	154.0	<u>GOWGANDA FORMATION SEDIMENTS</u> - Massive greywackes, quartz arenites, quartzites			
		19.0 - 22.0, Quartzite, light buff coloured, bedded/ banded @ 45° to core axis, poorly mineralized.			
		19.0 - 22.0 - <u>SAMPLE</u> 84-13-1	84-13-1	3.0'	<.001
		22.0 - 22.3, Gabbro Boulder? or small dike, coarse grained, poorly mineralized.			
		22.3 - 154.0, Gowganda Sedimentary rocks, mainly greywackes, fine grained, siliceous to carbonated/bleached, bedded at 45-55° to C.A., core broken, micro fractured up to 35' with rusty carbonated fracture filling, granitic inclusion? @ 33' for 4" @ 45° to core axis.			
		22.0 - 27.0 - <u>SAMPLE</u>	84-13-2	5.0'	<.001
		27.0 - 33.0 - <u>SAMPLE</u>	84-13-3	5.0'	<.001
		33.0 - 37.0 - Rusty, fractured core. <u>SAMPLE</u>	84-13-4	4.0'	.001
		37.0 - 41.0 - " " <u>SAMPLE</u>	84-13-5	4.0'	.001

New Augarita Porcupine Mines Ltd. Rathbun Twp.

PAGE: 2 of 3

DIAMOND DRILL HOLE 84-13

LOCATION: RATHBUN TWP.
Claim #608355

LATITUDE:
DEPARTURE:

BEARING:
ANGLE DIP:

STARTED:
FINISHED:
LOGGED BY: *Ju*

FROM	TO	REMARKS	SAMPLE NO	SAMPLE LENGTH	Au. oz/ton
		44.0 - 45.0 - Rusty, carbonate stringers up to 1" <u>SAMPLE</u>	84-13-6	1.0'	.001
		47.0 - 52.0 - carbonate, bleached core. <u>SAMPLE</u>	84-13-7	5.0'	.001
		54.0 - 55.0 - hematite stained fractured core. <u>SAMPLE</u>	84-13-8	1.0'	.001
		58.0 - 60.0 - rusty carbonate fracture filling. <u>SAMPLE</u>	84-13-9	2.0'	.012
		67.0 - 72.0 - " " broken core. <u>SAMPLE</u>	84-13-10	5.0'	.001
From	59.0 - 80.0,	core is broken, fractured with odd carbonate fracture filling, hematite stained, general jointing @ 30° to C.A., bedding @ 60-70° to C.A.			
	75.0 - 80.0	- carbonate, chloritic, hematite in fractures in altered sediments. <u>SAMPLE</u>	84-13-11	5.0'	.010
From	80.0 - 110.0	- increased micro-fracturing of core with chlorite/carbonate filling.			
	80.0 - 85.0	- carbonate fracture filling at 30° to core axis, bedding at 60° to core axis. <u>SAMPLE</u>	84-13-12	5.0'	.002

New Augarita Porcupine Mines Ltd. Rathbun Twp.

PAGE: 3 of 3

DIAMOND DRILL HOLE 84-13

LOCATION: RATHBUN TWP.
Claim #608355

LATITUDE:
DEPARTURE:

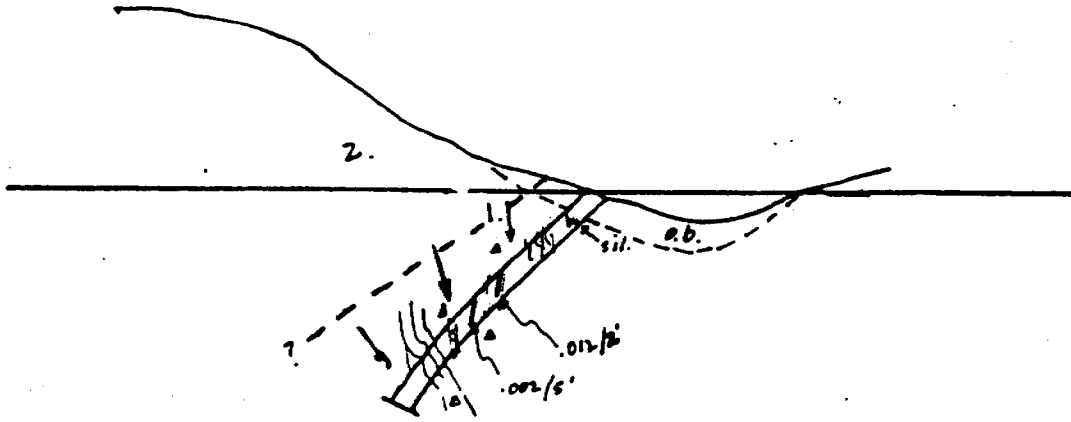
BEARING:
ANGLE DIP:

STARTED:
FINISHED:
LOGGED BY: *JK*

FROM	TO	REMARKS	SAMPLE NO	SAMPLE LENGTH	Au. oz/ton	
		96.0 - 101.0 - broken core, brecciated with carbonate and chlorite fracture filling @ 15° to C.A., banding @ 80° to core axis.				
		SAMPLE 84-13-13	84-13-13	5.0'	<.001	
		From 125.0 - 138.0 - bleached, altered brecciated core, marbled seds. with chlorite/carbonate fract. filling, bedding @ 65° to C.A.				
		125.0 - 130.0 - altered sediments, poorly mineralized.	SAMPLE 84-13-14	84-13-14	5.0'	<.001
		130.0 - 135.0 - as above.	SAMPLE 84-13-15	84-13-15	5.0'	<.001
		135.0 - 140.0 - " "	SAMPLE 84-13-16	84-13-16	5.0'	<.001
		From 137.0 - 154.0 - core is less altered, some bleaching in fine grained laminated sediments (slumped mud flows?) @ 45° to core axis.				
		147.0 - 153.0	SAMPLE 84-13-17	84-13-17	6.0'	.001
154.0		<u>END OF HOLE</u> - in <u>Gowganda Sediments</u> , odd carbonate fracture filling/jointing at 10-40° to core axis, bedding @ 75° to core axis, odd pebble up to 1" diameter.				

West

East



DH 84-13

**New Augarita Porcupine Mines
Rathbun Twp.**

Scale

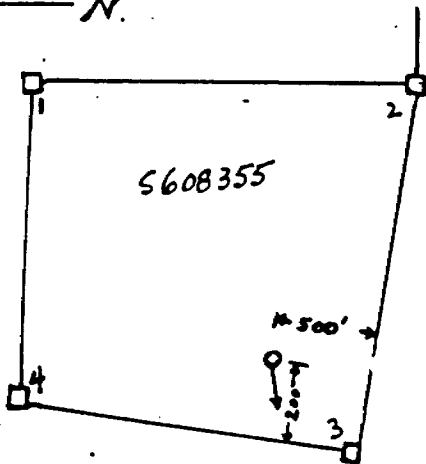
1 in. = 100 ft.

1" = 100'
LEGEND

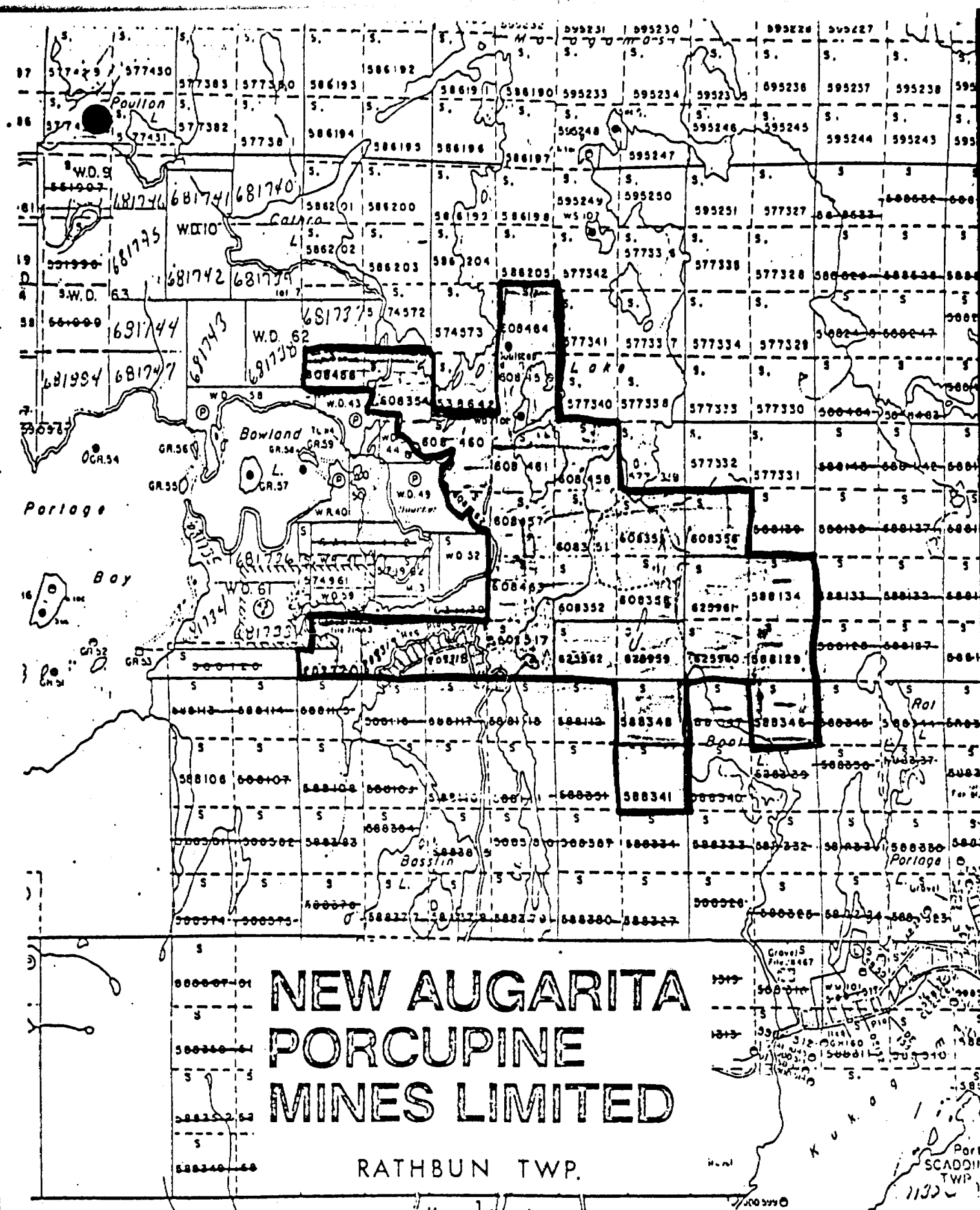
- 1 - Sediments: greywacke, qtz. arenites, arkoses
- 2 - Quartz Gabbro intrusive
- 3 - qtz.-carb. Breccia-diatreme
- mineralization

gca

← N.



**LOCATION
PLAN**



**NEW AUGARITA
PORCUPINE
MINES LIMITED**

RATHBUN TWP.

1" = 1/4 mi.
SCALE

SCADDING TWP. M.1092

FIG. 1.

New Auqarita Porcupine Mines Ltd.

1984 DIAMOND DRILLING PROGRAM
RATHBUN TOWNSHIP, ONT.

<u>HOLE #</u>	<u>Depth</u>	<u>Dip Angle</u>		<u>Comments</u>
		<u>Start</u>	<u>Finish</u>	
84-1	331.0'	-65°	-70°	
84-2	224.0'	vert.	No Test	
84-3	592.0'	-45°	-53°	
Extension	98.0'		No Test	- End of Hole was 690'
84-4	324.0'	-47°	-55°	
84-5	385.0'	-60°	-60°	
84-6	299.0'	-45°	-50°	
84-7	350.0'	-60°	-63°	
84-8	285.0'	-45°	-51°	
84-9	281.4'	-45°	-50°	
84-10	309.0'	-45°	-57°	
84-11	234.0'	-45°	-52°	
84-12	171.0'	-45°	-50°	
84-13	154.0'	-45°	-50°	

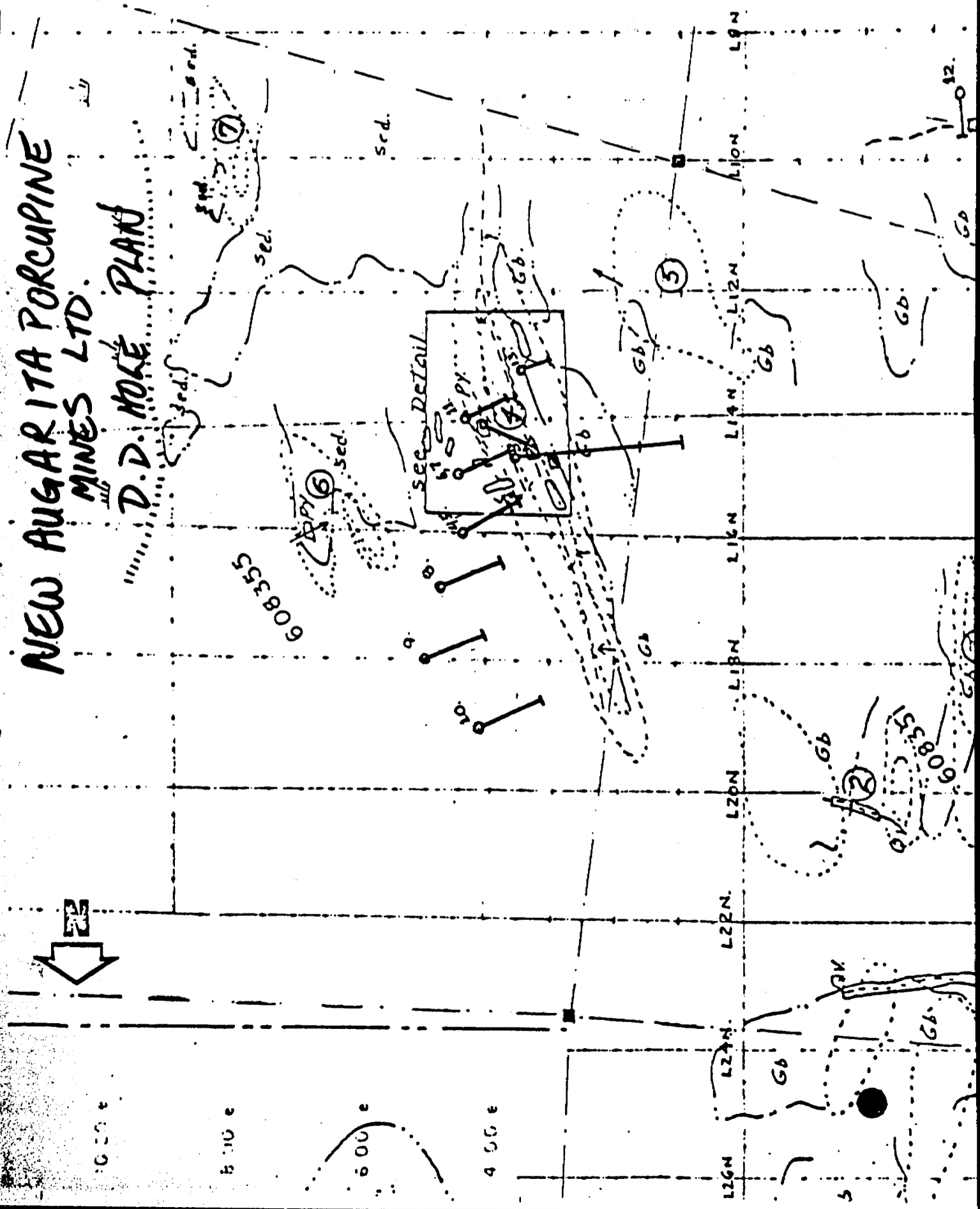
13 holes 4037.4 ft.

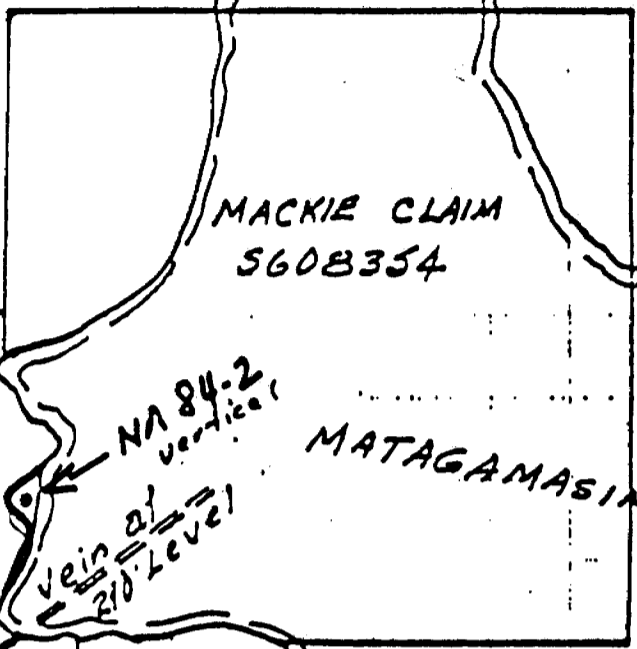
NEW AUGARITA PORCUPINE MINES LTD.

D. D. MOKE PLAN

NEW AUGARITA PORCUPINE MINES LTD.

DRIII HOLE PLAN





W.D. 43



MACKIE CLAIM
5608354

NA 84-2
vertical

MATAGAMASING
LAKE

CRYSTAL
NO 4
SHAFT

Vein at
210 Level

LAKE

BOWLANDS
LAKE

ROAD

BOUCHER
LAKE

FIGURE 4

Pie

pieced from sketches by W. Mackie.
J.D. McLeod

SCALE: 3" = 440 Yds Approx
SCALE
1"



41155E0062 0034 RATHBUN

900

#35-2

File S-608351



Ministry of Natural Resources

Report of Work

DIAMOND DRILLING

RATHBUN TWP.

(W-1071)

The Mining Act

Instructions - Supply required data on a separate form for each type of work to be recorded (see table below). - For Geo-technical work use form no. 1362 "Report of Work (Geological, Geophysical, Geochemical and Expenditures)".

Name and Postal Address of Recorded Holder NEW AUGARITA PORCUPINE MINES LIMITED Second Floor, 3240 Bloor Street West, Toronto, Ontario, M8X 1E4.	Inspector's Licence No. 71668
--	----------------------------------

Summary of Work Performance and Distribution of Credits

Total Work Days Cr. claimed 2070.0	Mining Claim			Mining Claim			Mining Claim		
	Prefix	Number	Work Days Cr.	Prefix	Number	Work Days Cr.	Prefix	Number	Work Days Cr.
For Performance of the following work. (Check one only) <input type="checkbox"/> Manual Work <input type="checkbox"/> Shaft Sinking Drifting or other Lateral Work. <input type="checkbox"/> Compressed Air, other Power driven or mechanical equip. <input type="checkbox"/> Power Stripping <input checked="" type="checkbox"/> Diamond or other Core drilling <input type="checkbox"/> Land Survey	S	608351	21.5	S	608462	30.5	S	598134	100.0
		608352	16.5		608463	21.5		598341	100.0
		608354	21.5		608464	29.0		598346	100.0
		608355	14.5		608317	200.0		598348	100.0
		608356	11.5		608318	200.0		625959	100.0
		608358	21.5		608319	200.0		625960	100.0
		608456	21.5		608320	200.0		625961	100.0
		608457	30.5		588129	100.0		625962	140.0
		608458	16.5						
		608459	21.5						

All the work was performed on Mining Claim(s): S 608354, 608355, 608352, 608358

Required Information eg: type of equipment, Names, Addresses, etc. (See Table Below)

JKSmit 300 Drill drilling BQ size core

Company: Ontario Corp. #574395 Ontario Inc., March 25 to July 2, 1984.
167 lakeshore Lane,
Timmins, Ontario.

Drillers: R. Todorovich, R.R. #1 Mc Lean Drive North, Timmins, Ont.
Robert Todorovich, as above.
Peter Colbert, 167 Lakeshore Lane, Timmins, Ont.
R. Tessier, Wanapitei, Ontario.

Total footage of drilling programme----- 4,037.4
Previously applied, May 23/84----- 867.0
Applied on this submission, Jan. 16/85----- 2,070.0

BALANCE OUTSTANDING STILL TO BE APPLIED ON THIS SUBMISSION----- 1,100.4

Location Map enclosed

Drill Logs submitted Nov. 28/84

ASSESSMENT FILES REC. AREA OFFICE

Work Assign: S-608355=182.5, Bal. 2051.5
S-608354=107.5 Bal. 3844.5 / S-608352=86.5 Bal. 5712

71219|10|11|12|13|14|15|16

RECORDED
JAN 13 1985

Recorded Jan. 21/85

Jan. 16/85

Recorded Holder or Agent (Signature)

I hereby certify that I have a personal and intimate knowledge of the facts set forth in the Report of Work annexed hereto, having performed the work or witnessed same during and/or after its completion and the annexed report is true.

Name and Postal Address of Person Certifying
JOHN C. ARCHIBALD
Suite 702-100 Adelaide St. West,
Toronto, Ontario, M5H 1S3.

Date Certified
Jan. 16/85

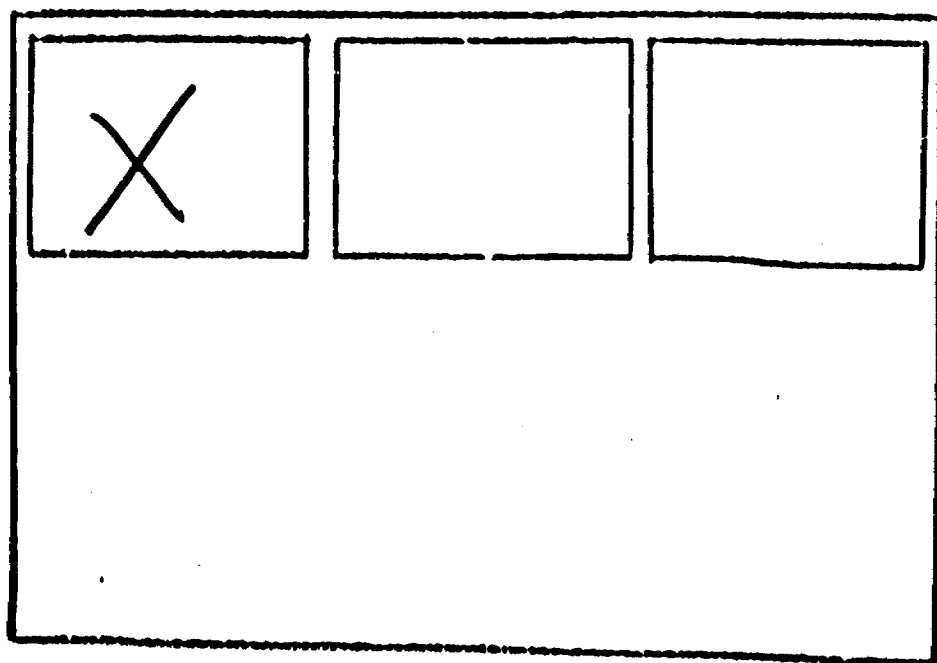
Certified by (Signature)

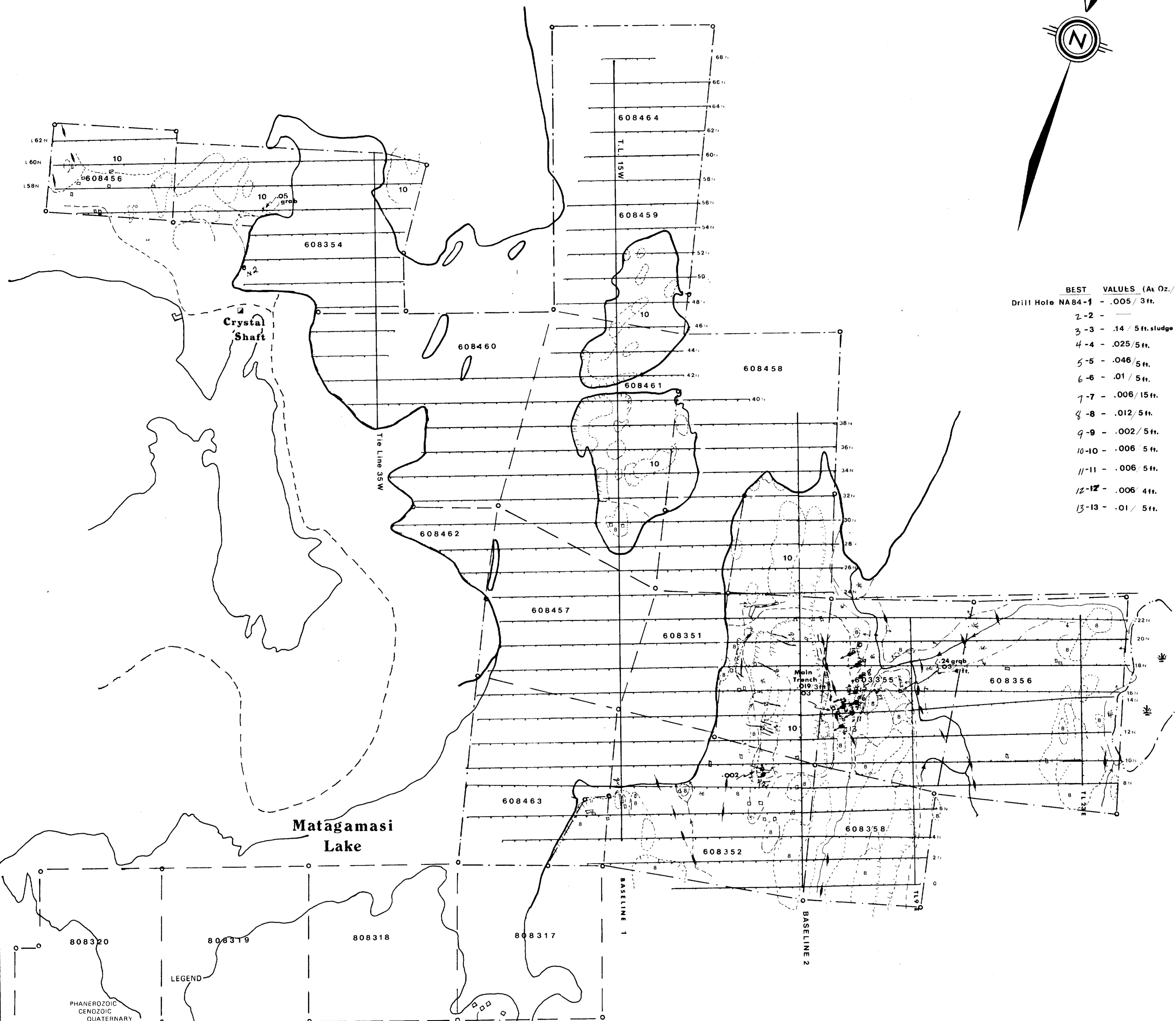
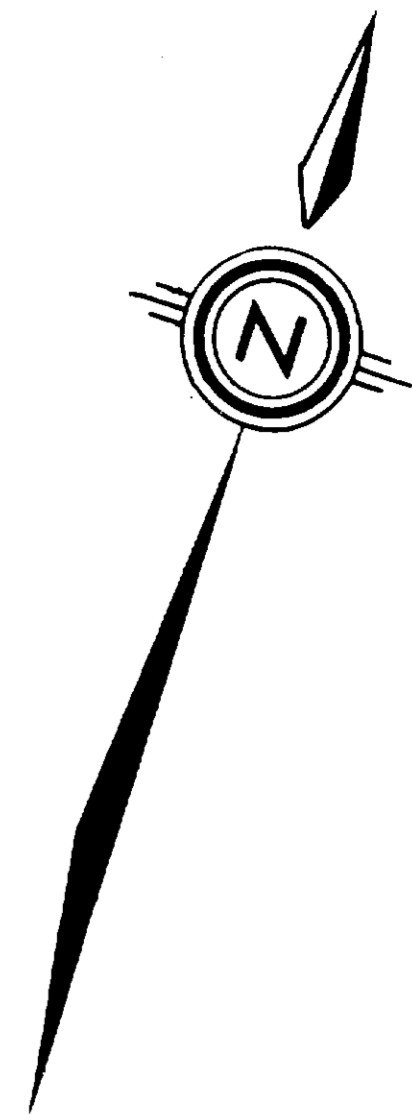
Table of Information/Attachments Required by the Mining Recorder

Type of Work	Specific information per type	Other information (Common to 2 or more types)	Attachments
Manual Work	Nil	Names and addresses of men who performed manual work/operated equipment, together with dates and hours of employment.	Work Sketch: these are required to show the location and extent of work in relation to the nearest claim post.
Shaft Sinking, Drifting or other Lateral Work	Nil		
Compressed air, other power driven or mechanical equip.	Type of equipment	Names and addresses of owner or operator together with dates when drilling/stripping done.	Work Sketch (as above) in duplicate
Power Stripping	Type of equipment and amount expended. Note: Proof of actual cost must be submitted within 30 days of recording.		
Diamond or other core drilling X	Signed core log showing: footage, diameter of core, number and angles of holes.	Nil	Nil
Land Survey	Name and address of Ontario land surveyor.	Nil	Nil

SEE ACCOMPANYING
MAP(S) IDENTIFIED AS
RATHBUN-0034 #1

LOCATED IN THE MAP
CHANNEL IN THE FOLLOWING
SEQUENCE (X)





Drill Hole	BEST VALUES (At Oz./Ton)
NA84-1	.005 / 3 ft.
2-2	-
3-3	.14 / 5 ft. sludge 05 / 7 ft.
4-4	.025 / 5 ft.
5-5	.046 / 5 ft.
6-6	.01 / 5 ft.
7-7	.006 / 15 ft.
8-8	.012 / 5 ft.
9-9	.002 / 5 ft.
10-10	.006 / 5 ft.
11-11	.006 / 5 ft.
12-12	.006 / 4 ft.
13-13	.01 / 5 ft.

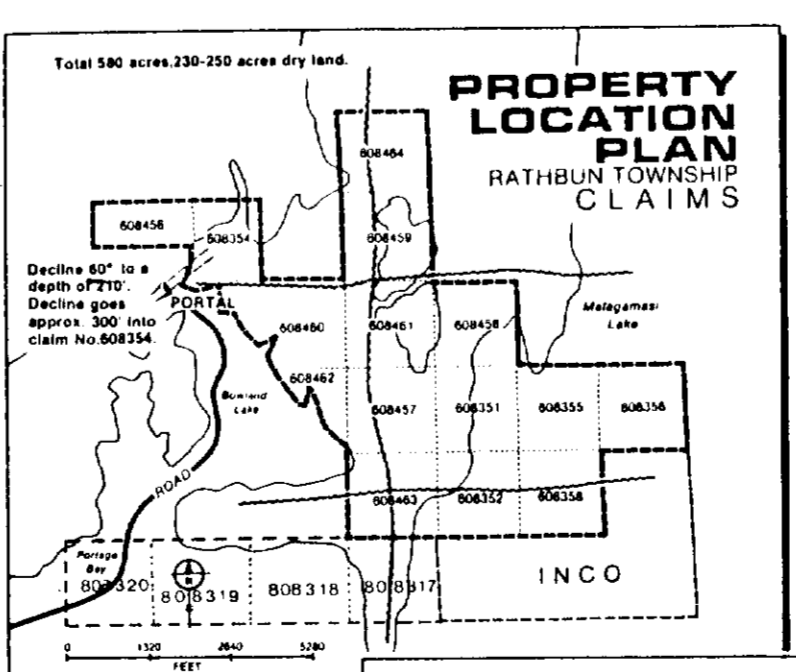
Matagamasi Lake

LEGEND

- 12 Fluvial and glacial sand and gravel; swamp deposits
- UNCONFORMITY
- PRECAMBRIAN MIDDLE TO LATE PRECAMBRIAN MAFIC INTRUSIVE ROCKS
- 11 Olivine diabase
- INTRUSIVE CONTACT
- MIDDLE PRECAMBRIAN NIPissing INTRUSIVE ROCKS
- 10a Quartz gabbro
- 10b Pegmatitic gabbro
- 10c Granitic and granitic pegmatite dike rock
- INTRUSIVE CONTACT
- HURONIAN SUPERGROUP COBALT GROUP Lorrain Formation
- 9a Pink to pinkish grey arkose
- 9b Grey wacke
- 9c Grey arkose
- 9d Grey to greenish grey arkose
- Gowganda Formation
- 8a Orthoconglomerate
- 8b Paraconglomerate
- 8c Arkose
- 8d Massive wacke
- 8e Laminated wacke
- QUIRKE LAKE GROUP Serpent Formation
- 7 Quartz sandstone
- Espanola Formation
- 6a Limestone, carbonaceous wacke
- 6b Carbonaceous wacke
- Bruce Formation*
- 5 Conglomerate
- HOUGH LAKE GROUP Mississagi Formation
- 4 Quartz sandstone and arkose
- UNCONFORMITY
- EARLY PRECAMBRIAN METAMORPHOSED MAFIC INTRUSIVE ROCKS*
- 3 Diabase
- INTRUSIVE CONTACT
- METAVOLCANICS AND METASEDIMENTS METASEDIMENTS*
- 2 Quartz sandstone, quartz wacke
- METAVOLCANICS Mafic to Intermediate Metavolcanics*
- 1 Mafic metavolcanics

LEGEND

- - claim post
- ◡ - outcrop
- ~ - creek
- ▭ - trench
- - shaft
- ☁ - swamp



RATHBUN-0034 #1

NEW AUGARITA PORCUPINE MINES LTD.

Geological Survey

Scale 1 in. = 400 ft.

Plate 4