

Diamond Drilling



41155E1222 0012A1 RATHBUN

010

Township of RATHBUN

Report NO 15

Work performed by: C. Burton

Claim NO	Hole NO	Footage	Date	Note
S 127022	1	801.0	Feb/66	
S 127019	2	298.0	Mar/66	
	3	187.0	Mar/66	
	4	625.0	Mar/66	
	L-1	125.0	June/68	
	L-2	602.0	Oct/68	
S.127016	S-2	146.0	July/71	

7 DH 2784'

Notes:

C.BURTON CLAIMS.

RATHBUN TOWNSHIP - SUDBURY MINING DIVISION

DDH 1 LOCATION - On Claim S-127022
425 feet North of, and 420 feet West of
S.E. Corner of claim S-127022.

Direction S 45° W , 45 degrees.

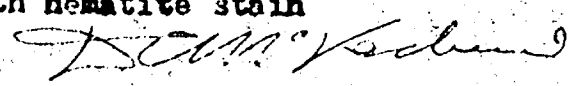
Drilled between Feb 22nd. and March 7th. 1966

Drilled by Inspiration Limited- North Bay Ontario

Core size AXI (1 1/4")- Logged by D.C.McKechnie P.Eng.
Stored at Claim S-127020.

FROM	TO	DESCRIPTION
0.0 - 12.0	-	Casing - (Overburden)
12.0 - 39.0	-	Argillite- massive fine grained , fine seams with epidote, Occas. fragments (angular)
39.0 - 112.0	-	Argillite- massive, occas. fine bedding at 70° to core axis.
112.0 - 135.0	-	Argillite- fine bedding 60° -70° to C.A. at 123.5' 1/8" seam with chalcopyrite at 70 degrees.
135.0 - 150.0	-	Argillite- somewhat coarser, contorted at 145'
150.0 - 205.0	-	" fine grained- at 70°
205.0 - 225.0	-	" Fine bedding 65° to 70°.
225.0 - 323.0	-	" massive fine grained. @ 241'- slight min chalcopyrite for 1" 285'- 1/2" epidote & pyrite at 70°
323.0 - 379.0	-	Argillite- bedding @ 70°
379.0 - 421.0	-	" slightly coarser grain
421.0 - 499.0	-	Argillite- fine grained- black @ 70°
499.0 - 508.0	-	" Broken core- minor seams with hematite @ 35 - 45°.
508.0 - 527.0	-	" Fine grained- bedding @ 70°- hematite seams @ 30-45°
527.0 - 568.0	-	" black- minor folding. occas. 1/4" quartz seam spot of chalcopyrite @ 543.0'
568.0 - 573.0	-	" slightly sheared @ 10 -15°. with minor pyrite. trace of chalcopyrite. Minor hematite seams @ 45°
573.0 - 598.0	-	" bedding 60-70°. occas fractures with hematite @ 45°
598.0 - 726.0	-	" bedding @ 70°
726.0 - 741.0	-	" " 80° occas hematite seams @ 45°
741.0 - 773.0	-	" Fine grained
773.0 - 776.0	-	" broken core, hematite stained.
776.0 - 801.0	-	Argillite- bedding @ 70°, occasionally broken core with hematite stain

END OF HOLE



D.C. McKechnie
185 McNaughton St.
Sudbury Ontario
March 14th. 1966

NORLEX MINES LIMITED

DDH No. 2

C. Burton Claims

RATHBUN TOWNSHIP - SUDBURY MINING DIVISION, ONTARIO

DDH 2 LOCATION - On claim S- 127,019
850 feet south of, and 620 feet west of
N.E. Corner of claim S-127019

Direction - N10°E , @ -45 degrees.

Drilled between March 8th. and 11th, 1966

Drilled by Inspiration Limited- North Bay, Ontario

Core size - AXT (1 1/4") - Logged by D.C. McKechnie

- Core stored on claim S-127020.

<u>FROM</u>	<u>To.</u>	<u>DESCRIPTION</u>
0.0	- 20.0	- Casing (Overburden)
20.0	- 43.5	- Gabbro (Sudbury gabbro type) fine grained
43.5	- 45.5	- Granitic phase of above
45.5	- 74.0	- Gabbro becoming finer, dense at 74'
74.0	- 105.0	- Contact zone, gabbro becomes dense and argillites hardened contact at about 100'
105.0	- 135.0	- Argillite, somewhat sandy in texture and bedded, bedding @ 35 to 40° to C.A.
135.0	- 180.0	- Argillite- sandy texture, bedding 25-30° @ 152' - 1" vein of pink calcite @ 45°. much broken core, and an odd speck of chalcopyrite
180.0	- 201.0	- Argillite- Bedding 20-30°
201.0	- 210.0	- Argillite, slightly sheared with hematized seams @ 5 to 20° to C.A.
210.0	- 249.0	- Argillite- fine grained- bedding 20-30°
249.0	- 280.0	- Argillite- " " much broken core.
280.0	- 285.0	- Argillite- Broken core, minor hematite seams.
285.0	- 298.0	- Argillite- Broken core- some core loss 40%) sheared with considerable hematite in seams and calcite seams @ 45 degrees. Trace of copper carbonates.

END OF HOLE

D.C. McKechnie P. Eng.
185 McNaughton St.
Sudbury, Ontario
March 14th. 1966

D.C. McKechnie

NORLEX MINES LIMITED

DDH No. 3

C. Burton Claims

RATHBUN TOWNSHIP - SUDBURY MINING DIVISION.

DDH 3 LOCATION - On claim S-127,019

460 feet south of, and 420 feet west of,
N.E. Corner of claim S- 127019

Direction S 10° W. @ -30 degrees.

Drilled by Inspiration Limited - North Bay Ontario

Drilled between March 11th. and 13th. 1966

Core size - AXT (1 1/4") - Logged by D.C. McKechnie P. Eng.
Core stored on claim S-127,020.

<u>FROM</u>	<u>TO</u>	<u>DESCRIPTION</u>
0.0	- 12.0	Casing (Overburden)
12.0	- 134.0	Gabbro (Sudbury gabbro type) Medium grain, becoming finer, 93-98' slight shearing @ 10° to C.A.
134.0	- 159.0	Gabbro- Fine grain, minor fractures @ 45°
159.0	- 174.0	Gabbro- Fine grain. @ 160' - 1/4" talc seam @ 15° @ 167' - Hematite shear @ 15°
174.0-		Gabbro -Argillite contact
174.0	- 187.0	Argillite- Sandy texture, bedding @ 65° <u>END OF HOLE</u>

D.C. McKechnie P. Eng
185 McNaughton St.
Sudbury, Ontario

D.C. McKechnie

March 14th. 1966

LOT 10

S-127024

CON V

1" = 400'



C. BURTON CLAIMS
RATHBUN TWP.
SUDBURY M.D. ONT
DRILLING - FEB-MARCH - 1966
DEM.

127023

127022

127021

Lake.

DDH 1
-45°

12701

DDH 3
-30°

DDH 4
-45°

DDH 2
-45°

127020

127019

127016

127017

Dem. Ketchum
March 21/66

C. Burton Claims.

RATHBUN TOWNSHIP - SUDBURY MINING DIVISION

DDH 4. LOCATION- On claim S-127019.
840 Feet South of, and 635 feet west of
N.E. Corner of claim S-127019

Direction- S 88° E, @ -45 Degrees.
Drilled between March 14th and 31st. 1966
Drilled by Inspiration Limited- North Bay Ontar
Core size - AXT (2 1/2")- Logged by D.C. McKechnie
Core stored on claim S-127020

FROM	TO	DESCRIPTION
0.0	23.0	- Casing (Overburden)
23.0	95.0	- Gabbro- Medium to fine grain- @ 71' - 1/8" chalcopryite seam @ 30°
95.0	120.0	- Gabbro- fine grain
120.0	185.0	- " Becoming dense- contact at 185'
185.0	273.0	- Sediments- Argillite- massive. little bedding
273.0	317.0	- " - occas. thin b ds argillite @ 30°
317.0	367.0	- " Thin beds- somewhat contorted. some fracturing @ 45°
367.0	386.0	- Sed. Argillitic. thinly bedded . Occas. 1/16" seams with Manganese carbonate- and occas. spot of chalcopryite therein @ 50°
386.0	433.0	- Sediments. Massive argillite
433.0	453.0	- " " " much broken cor - some h hematite stains.
453.0	502.0	- <u>Fault zone.</u> Broken and brecciated argillite some lost core. Leamed hole.
592.0	580.0	- Massive argillite occas. thin beds @ 45° 30° fractured @ 45°
580.0	625.0	- Massive bth occas. thin beds of argillite @ 35°. Occas. shear @ 35°.

END OF HOLE.

D.C. McKechnie P. Eng.
185 McNaughton St.
Sudbury Ontario
April 5th. 1966

D.C. McKechnie

LOT 10

CON V



5-127024

1" = 400'

C. BURTON CLAIMS
RATHBUN TWP
SUDBURY M.O. ONT
DRILLING

127023

127022

127021

Lake

DDH 1
-45°

127018

3
-30°

DDH 2 -45°
DDH 4 -45°

127020

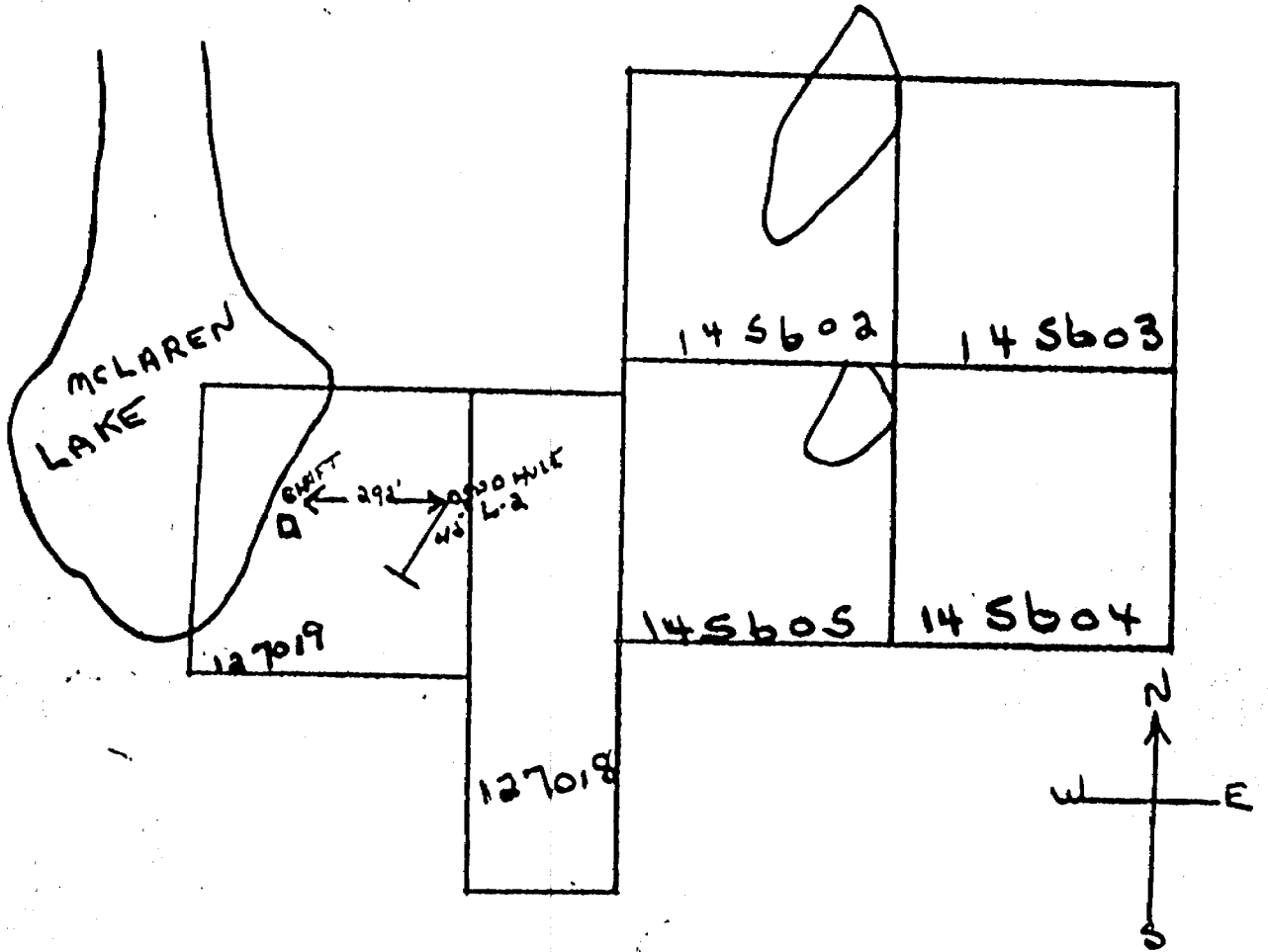
127019

127016

127017

DM

RATHBUN TWP



Sketch showing location of
 Well hole L-2 located on claim
 S. 127019 Rathbun Twp.
 For assessment work on
 claim S 127018 S. 127019
 S. 145602 S. 145603 S. 145604
 S. 145605

RECEIVED
 DEC 2 - 1968
 AM



THE MINING ACT - DEPARTMENT OF MINES
DIAMOND DRILLING LOG

Start a new page for every new hole, but fill in top portion of form only on first page for each hole.

FILL IN ON EVERY PAGE

HOLE NO. S-2	PAGE NO. 1
CLAIM NO. 127016	

DRILLING COMPANY		COLLAR ELEVATION	BEARING OF HOLE FROM TRUE NORTH SE	TOTAL FOOTAGE 146'	DIP OF HOLE AT 40'	LOCATION OF HOLE IN RELATION TO A FIXED POINT ON THE CLAIM 250' NE from Wasp Lake along contact of sediment and then 75 feet from contact in a S.E. direction	MAP REFERENCE NO.	CLAIM NO. 127016
DATE HOLE STARTED July 18, 1971	DATE COMPLETED July 23, 1971	DATE LOGGED July 24/71	LOGGED BY M. BURTON		ft		LOCATION (Tp., Lot, Con. OR Lat. and Long.) RATHBUN Twp?	
EXPLORATION CO., OWNER OR OPTIONEE BURCO EXPLORATIONS LTD.		DATE SUBMITTED July 28 1972	SUBMITTED BY (Signature) M. J. Burton		ft		LOT 10 CON IV	
					ft		PROPERTY NAME Burco	

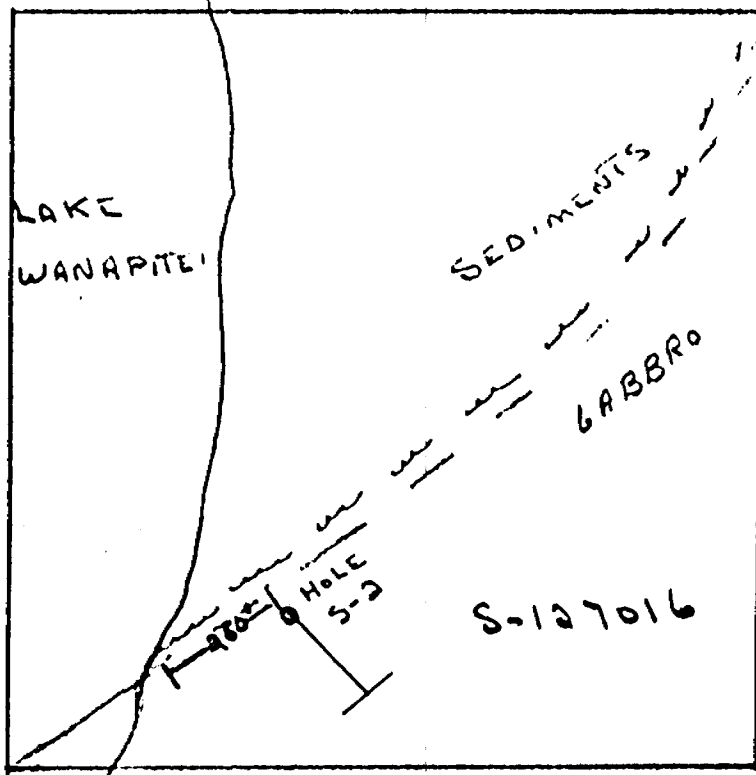
FOOTAGE		ROCK TYPE	DESCRIPTION Colour, grain size, texture, minerals, alteration, etc.	PLANAR FEATURE ANGLE *	CORE SPECIMEN FOOTAGE †	YOUR SAMPLE NUMBER	SAMPLE FOOTAGE		SAMPLE LENGTH	ASSAYS †	
FROM	TO						FROM	TO			
0	25'	Gabbro	Light coarse grained gabbro								
25'	75'	Gabbro	Coarse grained, light colour								
75'	100'	Gabbro	Coarse grained light colour								
100'	125'	Gabbro	Darker colour fine grained								
125'	146'	Gabbro	Darker in colour gabbro becoming finer grained. Homogenous. End of hole								

RECEIVED
JUL 31 1972

* For features such as foliation, bedding, schistosity, measured from the long axis of the core.

† Additional credit available. See Assessment Work Regulations.

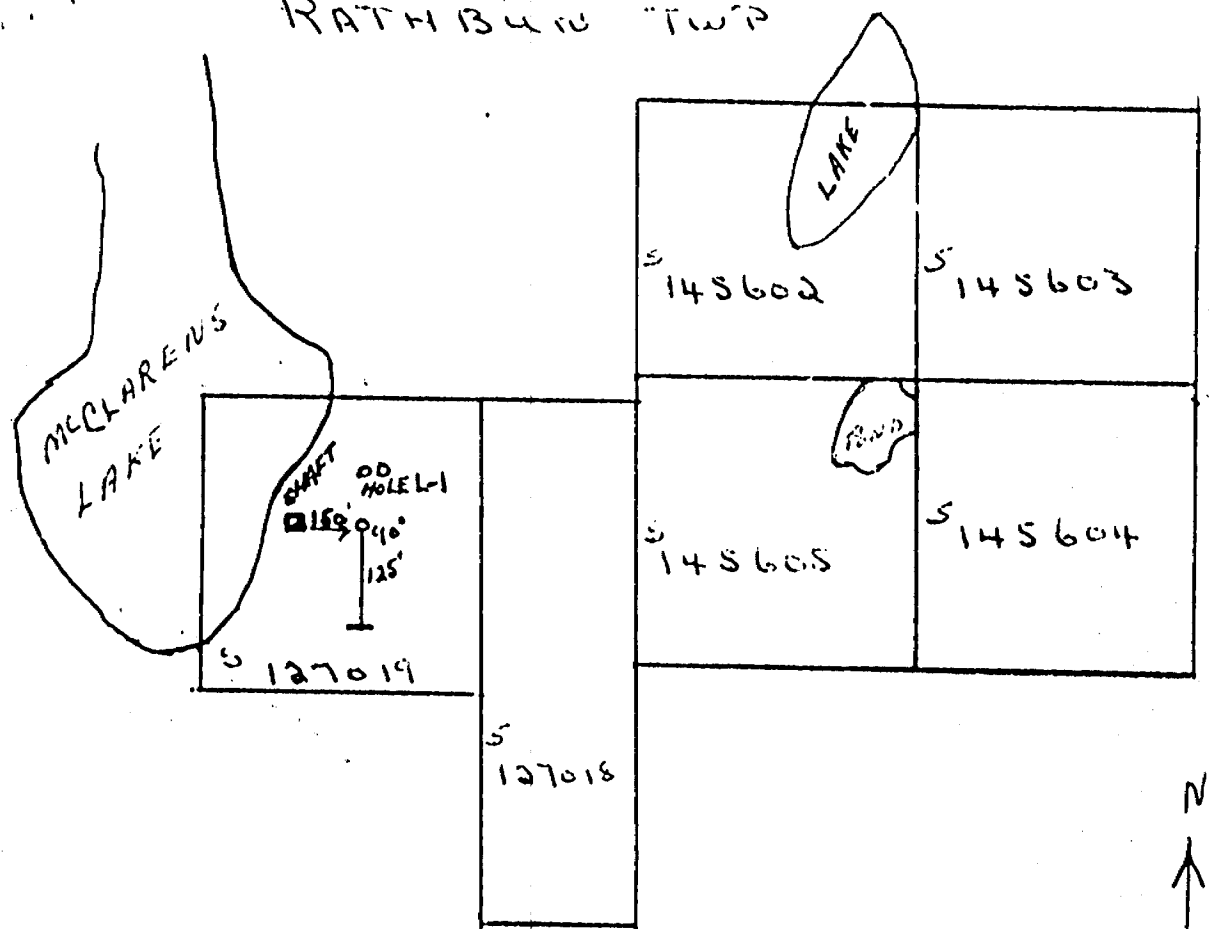
RATHBUN TWP



Location of Drill hole S. 2

SUMMIT
RECLIVE
JUL 31 1972

RATHBUN TWP



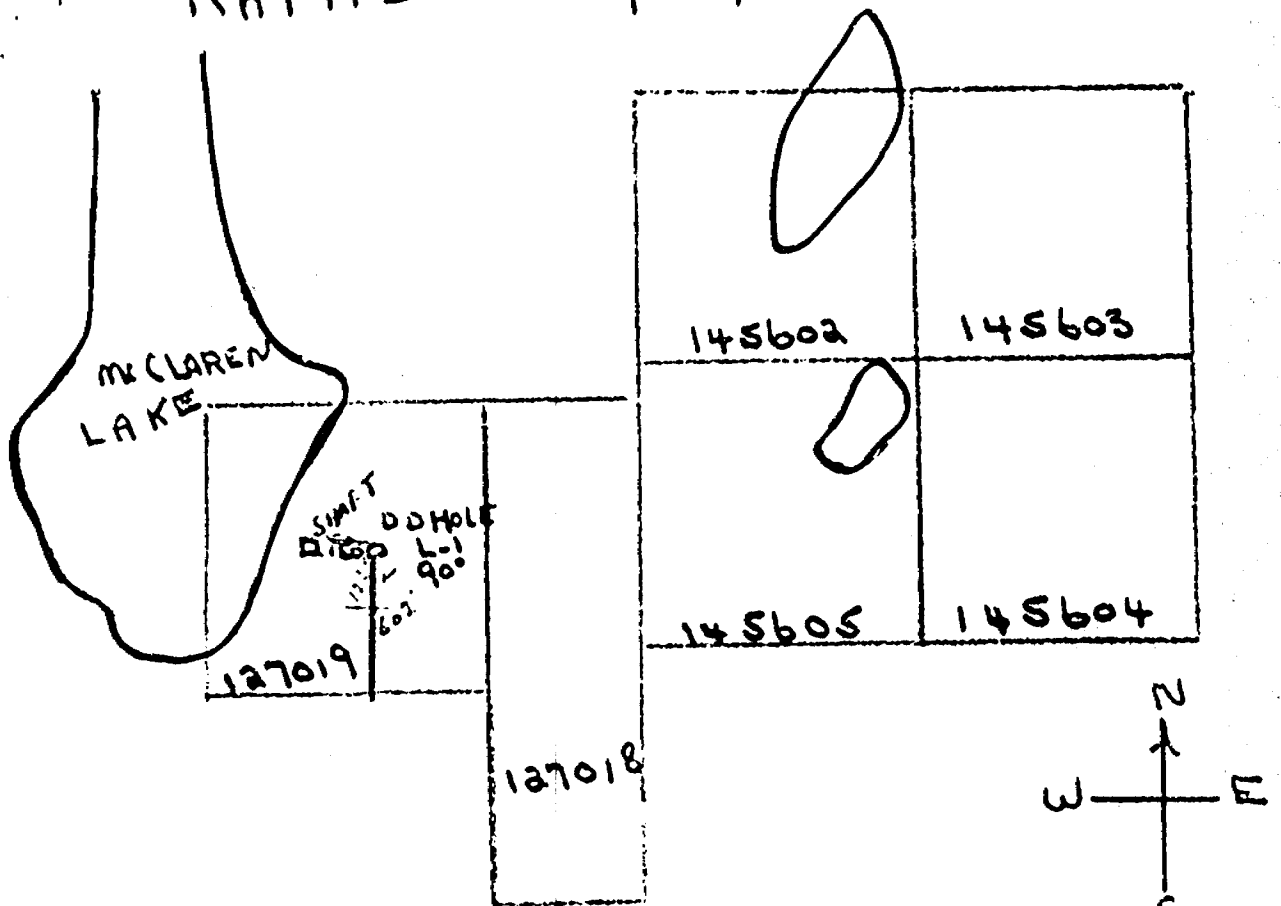
Sketch showing location
of Drill hole L-1

located on claim S-127019

Rathbun TWP.

For assessment work on claims
S-127018, S-127019, S-145602
S-145603, S-145604, S-145605

RATHBUN TWP



Sketch showing location of
Drill hole L-1 located on
claim S 127019 Rathbun Twp
For assessment work on
claims S 127018, 127019,
145602, 145603, 145604,
145605.

DIAMOND DRILL RECORD

Hole No. L-2 Sheet No. 1

Property BURCO EXPLORATIONS LTD.
 Location RATHBURN TWP
 Latitude _____
 Departure _____
 Bearing _____

Dip 90°

 Total Footage ~~602~~ 602

Elev. Collar _____
 Datum _____
 Date Started JUNE 13 1968
 Date Completed JULY 10 1968
 Drilled by R. TUTTLE
 Logged by M. BURTON

125' ~~footage~~
 substituted
 12/20/19

Footage		Formation	Sample Number	Sample Footage	Sample Width	Gold Sample	Gold Sludge	Remarks
From	To							
		From 125' of drill hole L-1 reported June 17 1968. This is drill log from 125' - 727'						
125'	150'	Gabbro, slight mineralization						
150'	200'	Gabbro						
200'	206'	Gabbro. Contact with sediments at 206' feet						
206'	300'	Sediments some mineralization						
300'	400'	Sediments						
400'	500'	Sediments						
500'	600'	Sediments						
600'	700'	Sediments						
700'	727'	Sediments						
		Hole completed, Casing left in hole.						

Date of Examination July 10 1968

Martin Burton



41155E1222 0012A1 RATHBUN

900

MACKELCAN TWP.

