



41115SW00:15 2.9076 PARKIN

010

- INCO ASSAYS -
FOR J. BRADY - PARKIN TP

SUMMARY OF Assay Sheets - Nos 1-6 incl. 89410

Pages 1 & 2	-	4998.00
Page 3		1320.00
Page 4		45.00
Page 5		195.00
Page 6		455.00
Page 9		300.00
Page 10		<u>240.00</u>
 TOTAL.		 7553.00

RECEIVED

APR 30 1986

MINING LANDS SECTION

J. BRADY
 1227 Holland Rd.
 Sudbury, ONT.
 P3A 3R1
 TEL (705) 5660613

INCO

N.L. Anderson
Manager Mines Exploration
Ontario Division

March 5, 1986.

Mr. John Brady,
1227 Holland Rd.,
SUDBURY, Ontario.
P3A 3R1

Dear Mr. Brady,

The attached assay sheets show the results of the samples from your Parkin Township properties. The monetary value of these assays according to the Ontario Geological Survey schedule of fees is \$7,553.00.

Yours truly,



N. L. Anderson,
Manager, Mines Exploration.

Enclosures

I

See MAPS - B-1, B-2



Ontario Division

1985

ASSAY RESULTS: Boreholes drilled by Nearctic Resources Inc. in 1983 on Brady property, Parkin Township

BH	From	To	wt. %				ozs./ton		
			Cu	Ni	Co	S	Pt	Pd	Au
B-1	46.0	46.2	.98	.05	.0	1.3	.0	.004	.017
	46.5	46.7	.22	.17	.02	1.4	.017	.003	.002
	65.0	66.0	.0	.06	.01	.5	.002	.002	.0
	74.0	75.5	.69	.24	.01	2.2	.006	.007	.009
	75.5	76.0	6.79	1.75	.05	18.3	.017	.031	.0
	76.0	78.0	.52	.09	.01	1.2	.0	.0	.0
	78.0	85.0	.0	.0	.0	< .5	.0	.0	.0
	85.0	95.0	.0	.0	.0	< .5	.0	.0	.0
B-3	25.0	26.0	.08	.0	.0	< .05	.0	.0	.0
	26.0	36.0	.42	.10	.01	1.1	.003	.004	.039
	36.0	46.0	.15	.08	.0	.7	.003	.003	.0
	46.0	50.2	.41	1.02	.04	8.5	.026	.024	.003
	50.2	57.0	.21	.05	.0	.5	.005	.004	.003
	57.0	60.0	.30	1.36	.06	9.7	.027	.008	.003
	60.0	70.0	.07	.0	.0	< .5	.0	.0	.0
B-4	3.0	10.0	.0	.0	.0	< .5	.0	.0	.0
	10.0	20.0	.0	.0	.0	< .5	.0	.0	.0
	20.0	30.0	.0	.0	.0	< .5	.0	.0	.0
	30.0	40.0	.0	.0	.0	< .5	.0	.0	.0
	40.0	50.0	.0	.0	.0	< .5	.0	.0	.0
	50.0	60.0	.0	.0	.0	< .5	.0	.0	.0
	60.0	70.0	.0	.0	.0	< .5	.0	.0	.0
	70.0	80.0	.0	.0	.0	< .5	.0	.0	.0
B-5	5.0	15.0	.0	.0	.0	< .5	.0	.0	.0
	15.0	30.0	.0	.0	.0	< .5	.0	.0	.0
	30.0	40.0	.0	.0	.0	< .5	.0	.0	.0
	40.0	50.0	.0	.0	.0	< .5	.0	.0	.0
	50.0	60.0	.0	.0	.0	< .5	.0	.0	.0
	60.0	70.0	.0	.0	.0	< .5	.0	.0	.0
	70.0	80.0	.0	.0	.0	< .5	.0	.0	.0
	80.0	90.0	.0	.0	.0	< .5	.0	.0	.0
	90.0	100.0	.0	.0	.0	< .5	.0	.0	.0

(cont'd)

See MAPS B-1, B-2 ²

Assay Results: Brady property, Parkin Township (cont'd)

BH	From	To	wt. %				ozs./ton		
			Cu	Ni	Co	S	Pt	Pd	Au
B-5 (cont'd)									
	100.0	120.0	.0	.0	.0	< .5	.0	.0	.0
	120.0	140.0	.0	.0	.0	< .5	.0	.0	.0
	140.0	160.0	.0	.0	.0	< .5	.0	.0	.0
	160.0	186.0	.05	.0	.0	.7	.004	.0	.0
	186.0	206.0	.0	.0	.0	< .5	.0	.0	.0
B-6									
	110.0	130.0	.0	.0	.0	< .5	.0	.0	.0
	130.0	150.0	.07	.0	.0	< .5	.005	.003	.0
	150.0	170.0	.0	.0	.0	< .5	.0	.0	.0
	170.0	190.0	.0	.0	.0	< .5	.0	.0	.0
B-7									
	69.5	73.0	.23	.08	.01	.7	.010	.009	.004
	73.0	86.2	.06	.0	.0	< .5	.0	.0	.003
	88.0	91.0	.09	.16	.01	1.4	.0	.003	.0
	91.0	92.0	.0	3.74	.06	27.7	.018	.026	.0
	92.0	109.7	.06	.06	.01	.5	.0	.003	.0
B-8									
	30.0	40.0	.90	.38	.03	2.6	.029	.038	.008
	53.0	65.0	.21	.24	.01	1.8	.0	.003	.002
	65.0	83.0	.0	.0	.0	.0	.0	.0	.0
	83.0	94.5	.0	.0	.0	.0	.0	.0	.0
B-9									
	8.5	18.0	.17	.14	.01	1.0	.007	.007	.003

	(cont'd)							
Total assays per element - pg 102	51	51	51	51	51	51	51	51
TIMES (X) individual cost	8.00	9.00	9.00	12.00	30.00	30.00	30.00	9.00
75 PER O.G.S. fee schedule	408.00	459.00	459.00	612.00	1530.00	1530.00	1530.00	459.00

Total estimated costs pg 102, AS PER O.G.S. fee schedule is ~~\$5457.00~~
4998

Assay data from grab samples taken from Brady property north of Milnet Mine (see Fig. 1)

		ozs./ton			
		Pt	Pd	Au	
J. Brady #	47537	nil	nil	.002	
	532	"	"	nil	
	543	"	"	.002	
	560	"	"	.020	
	MAP. B-3 TR. #1	651	"	nil	
	534	"	"	.005	
	533	"	"	.002	
	543	"	"	.044	
	529	"	"	.004	
W. V. Peredery surface samples	1A (J.B.'s .5 ozs./ton Au)	nil	nil	nil	
	1B	"	"	"	
	1C	"	"	"	
	1D	"	"	"	
	1E	"	"	.003	
	1F	"	"	nil	
	MAP B-3 TR.s 1 & 2	1G	"	"	"
	1H	"	"	.003	
	1J	"	"	.006	
	2A	"	"	nil	
	2B	"	"	"	
	2C	"	"	.002	
	2D	"	"	.002	

Total Assays per element - pg. 3	22	22	22
TIMES (X) individual costs AS PER	30.00	60.00 30.00	9.00
O.G.S. fee schedule	660.00	660.00	198.00

Total estimated costs - pg. 3, AS PER O.G.S See schedule
is: ~~\$1518.00~~
1320.

4

C. C. EXPLORATION GEOCHEM LAB

Submitted By :
Reported To : *KR/W.P.*

Approved : *[Signature]*
Date : 09-25-1985

Property : SUDBURY
Account No. : 91539-30205

Borehole :

Analysed : ~~09-24-1985~~ by HCM Method : FIRE ASSAY - AA
Our File : B:609-25

ALL ASSAYS IN PPB UNLESS OTHERWISE STATED
DETECTION LIMITS (all in PPM, except AU in PPB) : AU = 5

Sample No. AU

MG	48962	5
MG	48989	5
MG	48990	25

J.B.
47576 - Rust at Ft. Bridge East.
559 - Gal show 12d.
542 -

3 Gold ASSAYS - PPBs @ 15.00 = 45.00
MAP. B-3. - TR #2

J.D.
15

C.C. EXPLORATION GEOCHEM LAB

Submitted By : ... *AB, JKR* ...
Reported To : ... *AB, JKR* ...

Approved : *[Signature]* ...
Date : 04-29-1985

Property : PARKIN TWP.
Account No. : 91539-30202

Borehole :

Analysed : 04-29-1985 by HCM Method : FIRE ASSAY - AA
Our File : B:G04-29

ALL ASSAYS IN PPB UNLESS OTHERWISE STATED
DETECTION LIMITS (all in PPM, except AU in PPB) : AU = 5

SAMPLE No.	AU	J. Brady #
MG 46801	20	47771 - E
MG 46802	20	47775
MG 46803	< 5	47742
MG 46804	< 5	47758
MG 46805	80	47762 - <i>Geois #5 ELBOW TR scattered sulf - med t - grey - grey } sep</i>
MG 46806	90	47765 - <i>Geois #4 ELBOW - med sulf, grey, grey</i>
MG 46807	20	47768
MG 46808	< 5	47753
MG 46809	< 5	47779
* MG 46810	185	47742 - <i>Geois #6 - sep. n of elbow MOST northerly edge of SWAMP - Geois #6</i>
MG 46811	5	47772
MG 46812	< 5	47780
MG 46813	< 5	Selected grab samples

Au - 13 samples AS PER O.G.S. schedule @ 15.00
= 195.00

MAP B-3 - TR. # 4

66 -

MTC

ASSAYS IN PPM UNLESS OTHERWISE STATED
 DETECTION LIMITS (all in PPM, except AU in PPB) : CU = 5 NI = 5 CO = 5 AG = .5

16

SAMPLE No.	CU	NI	CO	AG
MG 46801	0.217 %	80 PPM	35 PPM	< 0.5 PPM
MG 46802	80 PPM	30 PPM	25 PPM	< 0.5 PPM
MG 46803	20 PPM	90 PPM	25 PPM	< 0.5 PPM
MG 46804	165 PPM	30 PPM	10 PPM	< 0.5 PPM
MG 46805	910 PPM	80 PPM	95 PPM	1.5 PPM
MG 46806	450 PPM	145 PPM	170 PPM	0.5 PPM
MG 46807	45 PPM	80 PPM	25 PPM	< 0.5 PPM
MG 46808	70 PPM	75 PPM	40 PPM	< 0.5 PPM
MG 46809	60 PPM	55 PPM	35 PPM	< 0.5 PPM
MG 46810	0.112 %	75 PPM	275 PPM	1.0 PPM
MG 46811	570 PPM	170 PPM	60 PPM	< 0.5 PPM
MG 46812	505 PPM	160 PPM	50 PPM	< 0.5 PPM
MG 46813	10 PPM	25 PPM	10 PPM	< 0.5 PPM

13 Cu @ 8.00 = 104.00
 13 Ni @ 9.00 = 117.00
 13 Co @ 9.00 = 117.00
 13 Ag @ 9.00 = 117.00
 455.00

MAP B-3 - TR # 4

End of Assay
 Accounts

C. C. EXPLORATION GEOCHEM LAB

9

Parkin Trp. J.B samples

Submitted By :
Reported To : K.R. W.V.P.

Approved: [Signature]
Date : 09-23-1985

Property : SUDBURY
Account No. : 91539-30205

Borehole :

Analysed : 09-22-1985 by HCM Method : FIRE ASSAY - AA
Our File : B:609-23

ALL ASSAYS IN PPB UNLESS OTHERWISE STATED
DETECTION LIMITS (all in PPM, except AU in PPB) : AU = 5

Sample No. AU

MG 48963	15
MG 48965	2.78 PPM
MG 48966	5
MG 48967	75
MG 48968	445
MG 48971	40
MG 48972	210
MG 48973	15
MG 48975	5
MG 48976	25
MG 48977	5
MG 48978	10
MG 48980	65
MG 48981	5
MG 48982	5
MG 48983	5
MG 48984	5
MG 48985	5
MG 48986	40
MG 48988	5

J.B.
47653
570 ~ .0803/Bu - HAT 1st blast
557
569 - g. on TR - HAT - Hwy white sulf.
566 - GAL. Show - 12 chrs
574
580 - mass. sulf. w side on the river - south of
561 - Hat - sandstone?
578-
528-
646
565 - Parkin Actus -
571-
575-
558-
554-
577
556-
?
648

34.2 ppm = 103/t

20 AU ASSAYS PPBs. @ 15.00 = 300.00

MAP B-3 TR #5

Work Report No. 86-24 (S. 734218)
 File No. 2.9076

Ministry of Natural Resources
 Diamond Drilling Log

Fill in on every page
 Hole No. 1

Resources Inc.		Collar Elevation	Rearing of hole from true North	Total Footage	Dip of Hole at Collar	Location of hole in relation to a fixed point on the claim. 0+42E 0+80N	Map Reference No.	Claim No.
10. 1983	Date Completed OCT. 4, 1983	Date Logged	Logged by	230 Ft.	90°		693958	Location (Twp., Lot, Con. or Lat. and Long.) PARKIN TWP. 38 1/4 5 1/2 LOT 6 CONT.
Resources Inc.		Date Submitted	Submitted by (Signature)	Ft.	Ft.		Property Name NEARCTIC - PARKIN	
		DEC 10/83	<i>F. Scott</i>	Ft.	Ft.			

In	Rock Type	Description Colour, grain size, texture, minerals, alteration, etc.	Planner Feet Angle	Core Specimen Footage	Your Sample No.	Sample Footage		Sample Length	Assays
						From	To		
	CASING								
12.5	DIORITE	PINK, SILICIFIED, FELDSPATHIZED BRECCIATED DIORITE							
25	DIORITE	SILICIFIED, TRACE PYRITE							
37.5	"	PINK, FELDSPATHIZED							
38	"	TRANSITION, COARSE GRAINED							
46.2	"	GREEN, FINE GRAINED, 37.5 - 1/2" ATL VEIN WITH CHALCOPYRITE 46.2 - 1/2" "	40°						
52	GABBRO	DARK GREEN COARSE GRAINED, UNALTERED.							
53	DIORITE	FINE GRAINED, SLIGHT PYRRHOTITE, PYRITE			3801	52	53	1.0	
59	DIABASE	FINE GRAINED, GREY							
68.5	DIORITE	PORPHYRITIC, TRACES PYRITE, PYRRHOTITE, CHALCOPYRITE.							
71	DIORITE	BRECCIATED, SLIGHT CHALCOPYRITE, TRACE PYRRHOTITE			3802	68.5	71	2.5	
73.5	DIORITE	WELL BRECCIATED, STRONG CHALCOPYRITE, FAIR PYRRHOTITE			3803	71	73.5	2.5	
76	DIORITE	BRECCIATED, SLIGHT CHALCOPYRITE, TRACE PYRRHOTITE.			3804	73.5	76	2.5	
80	DIORITE	SLIGHTLY BRECCIATED			3805	76	80	4.0	
85	DIORITE	MEDIUM GRAINED, TRACE SULFIDES.							
101	DIABASIC GABBRO	FINE GRAINED BLACK							
121	DIORITE	MEDIUM GRAINED GRANOPHYRIC							
125	GABBRO	FINE GRAINED BLACK							
172	DIORITE	MEDIUM GRAINED, EARLY POTASH ALTERATION, LATE EPIDOTE ALTERATION							
201	GABBRO	DARK, TRACE PYRITE							
222	PORPHYRITIC DIORITE	MEDIUM GRAINED AS AT 120-172							
230	BRECC. DIORITE	FINE GRAINED, DARK GREY.							

Company MINING RESOURCES INC.	Collar Elevation	Bearing of hole from true North	Total Footage 197'	Dip of Hole at Collar 90°	Location of hole in relation to a fixed point on the claim. 0 + 8 W 0 + 80 N.	Map Reference No.
Date Completed OCT. 11 1983	Date Logged OCT 10/83	Logged by F. SCOTT	Dip of Hole at 150' Ft. 150°	Location (Twp., Lot, Con. or Lat. and Long.) PARKIN TWP - SE 1/4 OF 5/4 LOT 6 CON 11		
Date Submitted DEC 10/83	Submitted by (Signature) <i>F. Scott</i>		Dip of Hole at Ft.	Property Name NEARCTIC PARKIN		

Depth To	Rock Type	Description Colour, grain size, texture, minerals, alteration, etc.	Planner Feature Angle *	Core Specimen Footage †	Your Sample No.	Sample Footage		Sample Length
						From	To	
5	CASING							
31	DIORITE	FINE GRAINED, EQUIGRAIN, EPIDOTE AND POTASH ALT.						
37	GRANODIORITE	MEDIUM GRAINED GNEISS.						
202	DIORITE	FINE GRAINED, EQUIGRAIN, EPIDOTE ON FRACTURES 60.5 - 1/2" ATZ VEIN WITH CHALCOPYRITE.						



Ministry of
Natural
Resources

**Diamond
Drilling
Log**

REVISED MAY 18

Fill in on
every page

Hole No. **7** Page No. **1**

Drilling Company NEARCTIC RESOURCES INC.		Collar Elevation	Bearing of hole from true North	Total Footage 150	Dip of Hole at Collar 90	Location of hole in relation to a fixed point on the claim. 0+30N 0+40E
Date Hole Started Nov. 28/83	Date Completed Dec 1/83	Date Logged DEC 6/83	Logged by F. SCOTT		Ft.	
Exploration Co., Owner or Optionee		Date Submitted DEC 11/83	Submitted by (Signature) 		Ft.	
					Ft.	

Map Reference No. _____ Claim No. **693958**

Location (Twp., Lot, Con. or Lat. and Long.)
**PARKIN TWP. SE 1/4 of S 1/2
of Lot 6 Con II**

Property Name
NEARCTIC - PARKIN

Footage		Rock Type	Description Colour, grain size, texture, minerals, alteration, etc.	Planar Feature Angle *	Core Specimen Footage †	Your Sample No.	Sample From
From	To						
0	-	CASING.					
0	20	DIORITE	BECCATIATED, CHLORITIZED, SILICIFIED 12.5 - 14 POTASSIC (?) ALTERATION 16 - 20 RELICT BANDING				
20	102	DIORITE	GREY, COARSE TO MEDIUM GRAINED 10-73 - BECCATIATED, SILICIFIED, CHLORITIC 71.6-73 TRACE DISSSEM. PYLLOPHYLITE, CHALCOPYRITE 86.3-88.3 CHLORITIC LAMPROPHYRE(?) DYKE 89.8 - 91.3 FAIR PYLLOPHYLITE, TRACE CHALCOPYRITE	45°			
102	109.6	DIORITE	FINE GRAINED, GREY.			7-1	90.5
109.6	112	FELSIC PORPHYRY	MEDIUM GRAINED	30°			
112	150		FINE TO MEDIUM GRAINED DIORITE, GLACE EPIDITE 120-150				

Footage To	Sample Length	Assays ‡
32.5	2.0	

* For features such as foliation, bedding, schistosity, measured from the ...



RELIG - MAY 18/84

Fill in on
every page

Hole No. **B** Page No. **1**

Drilling Company NEARCTIC RESOURCES INC.		Collar Elevation	Bearing of hole from true North	Total Footage 150'	Dip of Hole at Collar 90	Location of hole in relation to a fixed point on the claim.	Map Reference No.	Claim No. 693958
Date Hole Started DEC. 2/83	Date Completed DEC. 5/83	Date Logged DEC 6/83	Logged by F. SCOTT		FL		Location (Twp., Lot, Con. or Lat. and Long.) PARKIN TWP - SE 1/4 OF S 1/2 OF LOT 6 CON II	Property Name NEARCTIC PARKIN
Exploration Co., Owner or Optionee NEARCTIC RESOURCES INC.		Date Submitted DEC 11/83	Submitted by (Signature) <i>F. Scott</i>		FL			
					FL			

Footage		Rock Type	Description <small>Colour, grain size, texture, minerals, alteration, etc.</small>	Planar Feature Angle*	Core Specimen Footage †	Your Sample No.	Sample Footage		Sample Length	Assays †		
From	To						From	To		Cu	N.	Am.
0	3	CASING										
3	23	BRECC. DIORITE	DARK GREY, COARSE GRAINED, CHLORITIZED, MOTTLED									
23	27	DIABASE	DARK GREY, FINE GRAINED,									
27	29	BRECC. DIORITE	AS AT 3-23									
29	30	DIABASE "	AS AT 23-27									
30	31.5	BRECC. DIORITE	AS AT 3-23 TRACE CHALCOPYRITE			7557	30	31.5	1.5	.28	.08	.005
31.5	34.5	" "	SILICIFIED, SLIGHT PYRRHOTITE, SLIGHT CHALCOPYRITE			81	31.5	34.5	3.0	.80	.93	.009
34.5	42	" "	CHLORITIZED, SLIGHT DISSEM. PYRRHOTITE, TRACE CHALCOPYRITE			7558	34.5	42	7.5	.19	.14	.002
42	44	" "										
44	45.5	DIABASE	FINE GRAINED, DARK GREY, BASIC			B-2						
45.5	85	DIORITE	GREY, MEDIUM TO FINE GRAINED, MINOR SULFIDES			B-2	54.8	55.8	1.0	.56	1.22	.002
85	85	ANDESITE	83-85 FINE GRAINED APPROXIMATE CONTACT.									
85	95	ANDESITE	FINE-GRAINED, GREY-GREEN SLIGHTLY CHLORITIZED									
95	150	DIORITE	FINE GRAINED, SLIGHTLY BRECCIATED, SOME SALMON-PINK (POTASSIC?) ALTERATION, MINOR EPIDOTE									
			110-130 INCREASED EPIDOTE (2%)									
			NO SULFIDES									

* For features such as foliation, bedding, schistosity, measured from the long axis of the core.

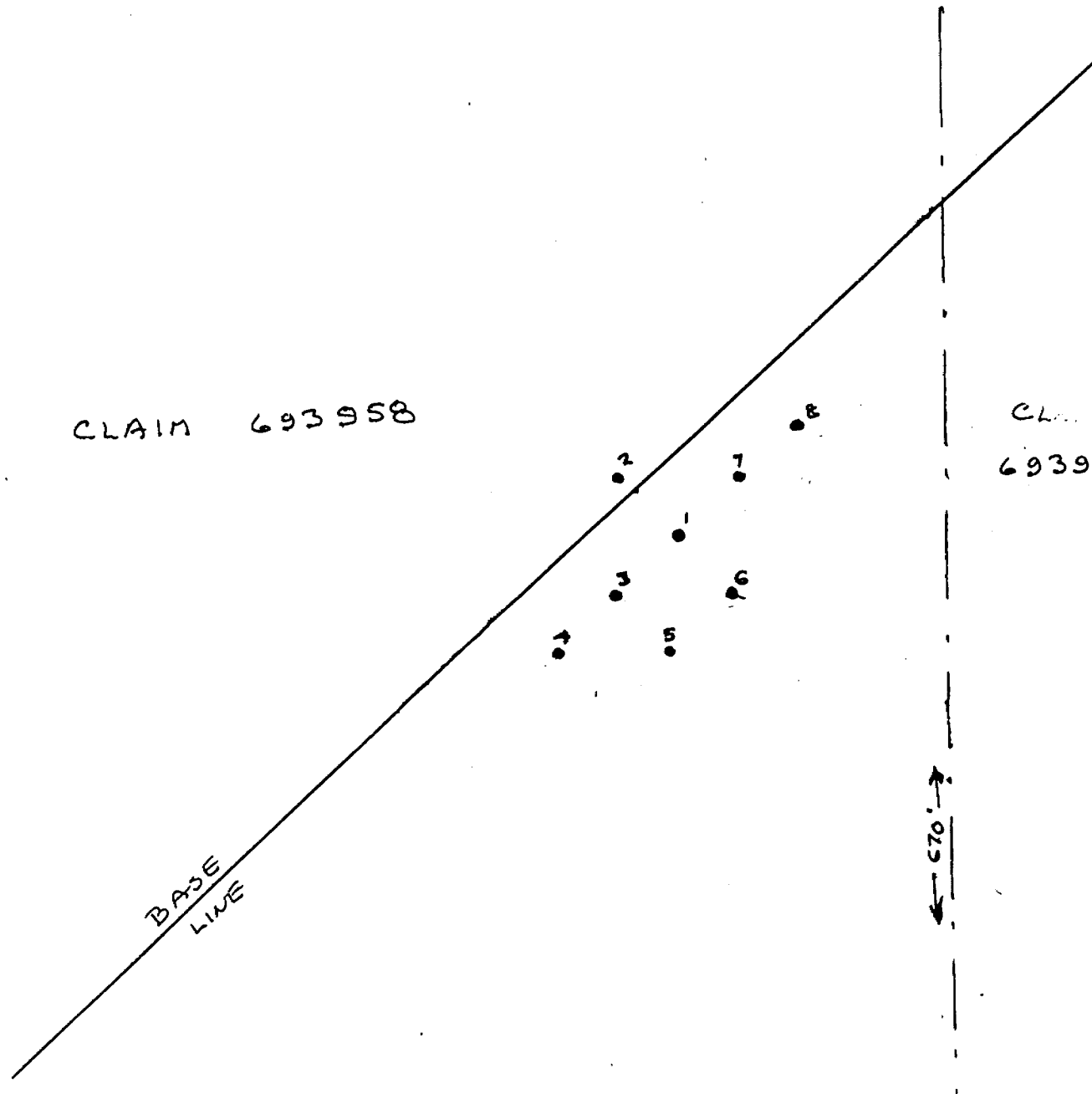
† Additional credit available. See Assessment Work Regulations.



B-1
PARKIN TWP.

CLAIM 693958

CLAIM
693959



BASE
LINE

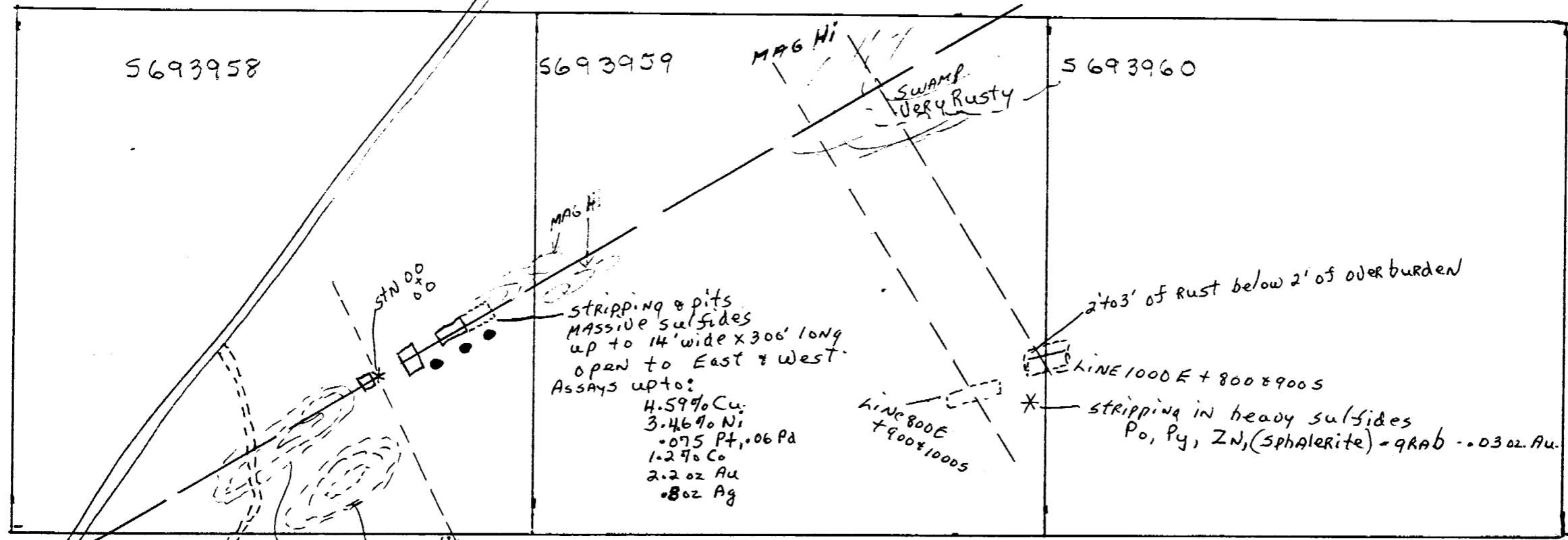
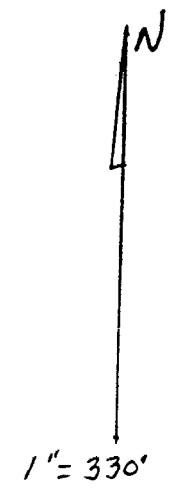
670'

SCALE 1" = 100'

Parkin Top B-2

JONSMITH MINE
1/4 mile

BASE LINE



5693958

5693959

5693960

MAG Hi

SWAMP
VERY RUSTY

MAG Hi

STN 00
00

STRIPPING & pits
MASSIVE sulfides
up to 14' wide x 300' long
open to East & West.
ASSAYS up to:

- 4.59% Cu
- 3.46% Ni
- 075 Pt, •06 Pd
- 1.27% Co
- 2.2 oz Au
- 8 oz Ag

2' to 3' of rust below 2' of overburden

LINE 1000 E + 800 & 900 S

LINE 800 E
+ 900 & 1000 S

* STRIPPING in heavy sulfides
Po, Py, Zn, (Sphalerite) - grab - .03 oz Au.

MAG Hi's

North River Road
Porte Lance Rd.

LAKE

19 CLAIMS
to S.E.

- - PITS
- ▭ - STRIPPING
- - DRILL HOLES
- - MAG Hi's
- - NOT STRIPPED

North.



J. BRADY
PARKIN TWP
1" = 440'

720650

681639

681640

681645

734717

681638

681641

681644

734718

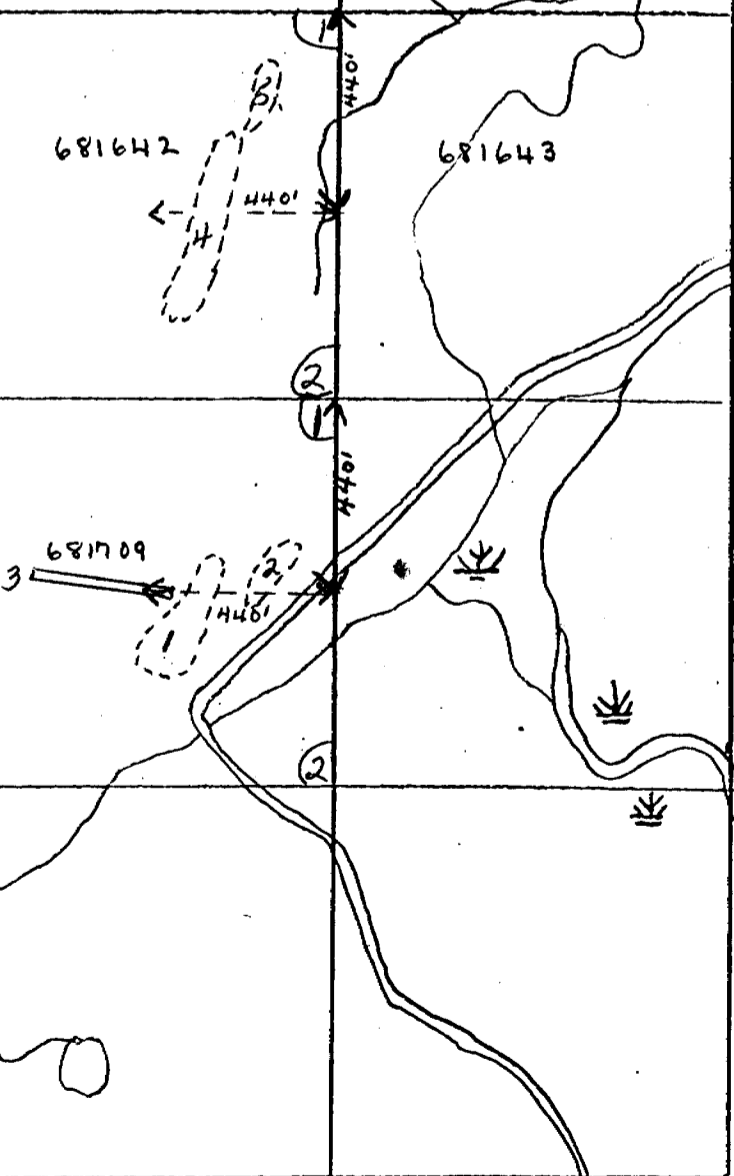
681637

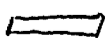
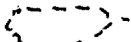
681642

681643

681708

681709



 - Trench
 - Stripped & Trenched



Ministry of
Natural
Resources
Ontario

#86-24

Report of Work
(Geophysical, Geological,
Geochemical and Expenditures)

Parkin Two.

(M. 16)

File No. S. 734218 ^{Apr 25}



41155W0035 2.9076 PARKIN

The Mill

900

Type of Survey(s) **Samples - Assaying** | **PARKIN TWP.**

Claim Holder(s) **JOHN BRADY** | Prospector's Licence No. **C32203**

Address **1227 Holland Rd. Subburg, ONT. P3A3R1**

Survey Company **N/A.** | Date of Survey (from & to) **15 01 85** to **15 12 85** | Total Miles of line Cut **N/A.**

Name and Address of Author (of Geo-Technical report) **N/A.**

Credits Requested per Each Claim in Columns at right

Special Provisions	Geophysical	Days per Claim
For first survey: Enter 40 days. (This includes line cutting)	- Electromagnetic	
	- Magnetometer	
	- Radiometric	
	- Other	
For each additional survey: using the same grid: Enter 20 days (for each)	Geological	
	Geochemical	
	Geophysical	
	Days per Claim	
Man Days Complete reverse side and enter total(s) here	- Electromagnetic	
	- Magnetometer	
	- Radiometric	
	- Other	
Airborne Credits Note: Special provisions credits do not apply to Airborne Surveys.	Geological	
	Geochemical	
	Electromagnetic	
	Magnetometer	
	Radiometric	
	Days per Claim	

Mining Claims Traversed (List in numerical sequence)

Mining Claim			Expend. Days Cr.	Mining Claim			Expend. Days Cr.
Prefix	Number			Prefix	Number		
S	734218	✓	40				
	734713	✓	40				
	734714	✓	40				
	734715	✓	40				
	734716	✓	40				
	734717	✓	40				
	734718	✓	40				
RECEIVED							
Mining Lands Section							

Expenditures (excludes power stripping)

Type of Work Performed **ASSAYING.**

Performed on Claim(s) **734713-18 & adjacent claims location map to follow.**

Calculation of Expenditure Days Credits

Total Expenditures **\$4200.00** ÷ **15** = **280** Total Days Credits

Instructions
Total Days Credits may be apportioned at the claim holder's choice. Enter number of days credits per claim selected in columns at right.

Total number of mining claims covered by this report of work. **7**

Date **MAR 5/86** | Recorded Holder or Agent (Signature) **J. Brady**

For Office Use Only

Total Days Cr. Recorded **280** | Date Recorded **March 6/1986** | Mining Recorder **V.C. Miller**

Date Approved as Recorded **See Reverse** | Branch Director **Shakemont**

Certification Verifying Report of Work

I hereby certify that I have a personal and intimate knowledge of the facts set forth in the Report of Work annexed hereto, having performed the work or witnessed same during and/or after its completion and the annexed report is true.

Name and Postal Address of Person Certifying **J. BRADY 1227 Holland Rd. Subburg, ONT.**

Date Certified **MAR 5/86** | Certified by (Signature) **J. Brady**



Mining Lands Comments

Are these sample location plans sufficient?
See

To: Geophysics

Comments

Approved Wish to see again with corrections Date Signature

To: Geology - Expenditures C. Krustra

Comments We need a map showing where the claims are located and if they want credit for the borehole samples, we should have the logs of the holes.

Approved Wish to see again with corrections Date May 13/86 Signature

To: Geochemistry

Comments

Approved Wish to see again with corrections Date Signature

RECEIVED

MAY 14 1986

MINING LANDS SECTION

To: Mining Lands Section, Room 6610, Whitney Block. (Tel: 6-4888)

June 4, 1986

Your File: 86-24
Our File: 2.9076

Mining Recorder
Ministry of Northern Development and Mines
199 Larch Street
Sudbury, Ontario
P3E 5P9

Dear Sir:

RE: Assaying submitted under Section 77(19)
of the Mining Act R.S.O. 1980, on Mining
Claim S 693958 in Parkin Township

The enclosed statement of assessment work credits for
assaying expenditures has been approved as of the above
date.

Please inform the recorded holder of this mining claim
and so indicate on your records.

Yours sincerely,

J.C. Smith, Supervisor
Mining Lands Section

Whitney Block, 6th Floor
Queen's Park
Toronto, Ontario
M7A 1W3

Telephone: (416) 965-4888

SH/mc

cc: John Brady
1227 Holland Road
Sudbury, Ontario
P3A 3R1

Resident Geologist
Sudbury, Ontario

Encl.



Recorded Holder
JOHN BRADY

Township or Area
PARKIN TOWNSHIP

Type of survey and number of Assessment days credit per claim	Mining Claims Assessed
Geophysical Electromagnetic _____ days Magnetometer _____ days Radiometric _____ days Induced polarization _____ days Other _____ days Section 77 (19) See "Mining Claims Assessed" column Geological _____ days Geochemical _____ days Man days <input type="checkbox"/> Airborne <input type="checkbox"/> Special provision <input type="checkbox"/> Ground <input type="checkbox"/> <input type="checkbox"/> Credits have been reduced because of partial coverage of claims. <input type="checkbox"/> Credits have been reduced because of corrections to work dates and figures of applicant.	<p>\$4,200.00 SPENT ON ASSAYING SAMPLES TAKEN FROM MINING CLAIM:</p> <p style="text-align: center;">S 693958</p> <p>280 DAYS CREDIT ALLOWED WHICH MAY BE GROUPED IN ACCORDANCE WITH SECTION 76(6) OF THE MINING ACT R.S.O. 1980.</p> <p><u>FOR MINING RECORDER'S USE:</u></p> <p style="text-align: right;">The work assignment for the above listed claim is 280 days.</p>

Special credits under section 77 (16) for the following mining claims

No credits have been allowed for the following mining claims

not sufficiently covered by the survey insufficient technical data filed

The Mining Recorder may reduce the above credits if necessary in order that the total number of approved assessment days recorded on each claim does not exceed the maximum allowed as follows: Geophysical - 80; Geological - 40; Geochemical - 40; Section 77(19) - 60.

May 16, 1986

File: 2.9076

Mr. J. Brady
1227 Holland Road
Sudbury, Ontario
P3A 3R1

Dear Sir:

RE: Data for Assaying submitted on
Mining Claims S 734218, et al,
in Parkin Township

In order to complete the above-described submission, please forward the following information (in duplicate):

- 1) key map showing location of claims
- 2) plan showing location of boreholes
- 3) drill logs of boreholes

When submitting this information, please quote file 2.9076.

For further information, please contact (Mrs.) Susan Hurst at (416) 965-4888.

Yours sincerely,

J.C. Smith, Supervisor
Mining Lands Section

Whitney Block, 6th Floor
Queen's Park
Toronto, Ontario
M7A 1W3

Telephone: (416) 965-4888

SH/mc

cc: Mining Recorder
Sudbury, Ontario
#86-24

Fraleck Twp. M. 816

THE TOWNSHIP OF

PARKIN

DISTRICT OF SUDBURY

SUDBURY MINING DIVISION

SCALE: 1-INCH=40 CHAINS

LEGEND

- PATENTED LAND (P)
- CROWN LAND SALE (C.S.)
- LEASES (L)
- LOCATED LAND (L.D.)
- LICENSE OF OCCUPATION (L.O.O.)
- MINING RIGHTS ONLY (M.R.O.)
- SURFACE RIGHTS ONLY (S.R.O.)
- ROADS (R)
- IMPROVED ROADS DATE OF ISSUE (MAY 27 1986)
- KING'S HIGHWAYS (K.H.)
- RAILWAYS (R.L.)
- POWER LINES (P.L.)
- MARSH OR MUSKEG (M.M.)
- MINES (M)
- CANCELLED QUARRY PERMIT (C.Q.P.)

NOTES

400' surface rights reservation along the shores of all lakes and rivers.

This Twp. lies within the Wapiti Provincial Forest.

Subdivisions for concessions 4, 5 & 6 annulled. See file 139667.

In area marked thus staking allowed as in unsubdivided Twp. Section 53, Min. Act.

AREAS WITHDRAWN FROM DISPOSITION

- M.R.O. - MINING RIGHTS ONLY
- S.R.O. - SURFACE RIGHTS ONLY
- M.+S. - MINING AND SURFACE RIGHTS

Description	Order No.	Date	Disposition	File
(M) SEC. 36/80	W.7/83	7/4/83	M.S.	188839

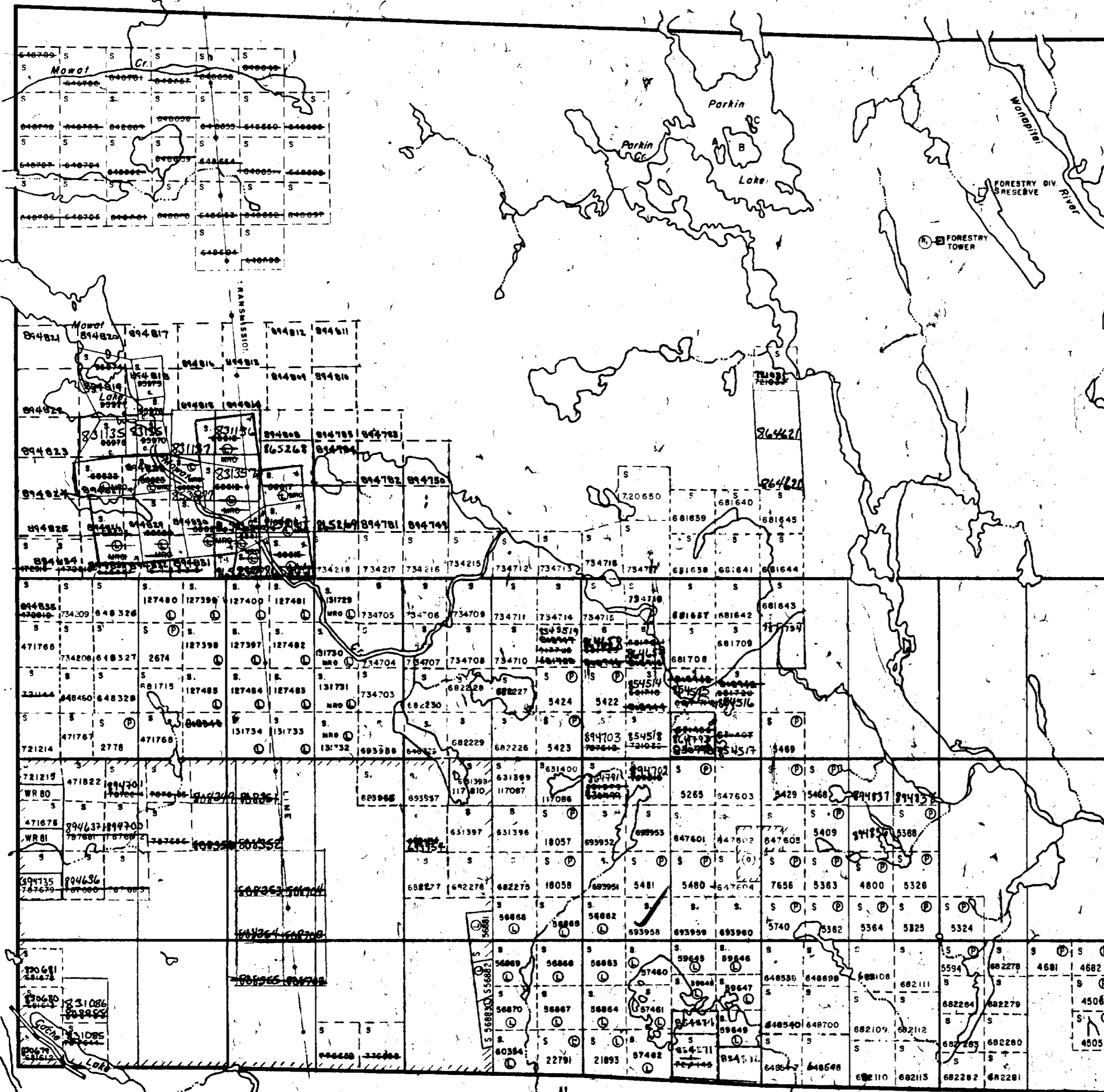
* May Cons 5-68610 at al. open for staking on June 1, 1985 - ONT. GAZETTE DATED MAY 4, 1985 SEC. 35(8) OF THE MINING ACT, R.S.O. 1980

PLAN NO. - **M.1049**

ONTARIO
MINISTRY OF NATURAL RESOURCES
SURVEYS AND MAPPING BRANCH

Hutton Twp. M. 944

Aylmer Twp. M. 641



12 11 10 9 8 7 6 5 4 3 2 1

Norman Twp. M. 1027

