

NORTH BRIDGE MINES LTD

~~THE NORTH BRIDGE NICKEL MINES LIMITED~~

Date: September 1952 Location: 15/00N - 490E Bearing: SE Hole No. P-8

Dip: 60° Property: 956864



41155W0089 PARKIN20A1 PARKIN

010

From	To	Description	Sample Nos.
0.0	9.0	Overburden.	
9.0	29.0	Bluish grey fine-grained - medium-grained rock that resembles "jasperoid" called <u>pyroxite</u> before); tiny pyrite crystals throughout; 45 - 60° cross fractures - carbonate and quartz filled.	
29.0	32.0	Fine-grained breccia zone with contorted bands; considerable epidote; no sulphides.	
32.0	35.0	Jasperoid; ditto 9.0 - 29.0.	
35.0	41.0	Quartzose zone with some resemblance to breccia; siliceous sections are amber in colour; "greenstone" sections are pale green and appear to be inclusions in quartz.	
41.0	56.0	"Jasperoid"; ditto 9.0 - 29.0.	
56.0	58.0	Fine-grained bluish rock; not very siliceous looking; probably <u>diabase</u> .	
58.0	72.0	"Jasperoid;" pyrite throughout.	
72.0	80.0	Dark; very fine-grained rock; altered "greenstone" (but not a green colour); no pyrite (pyrite only in jasperoid of 9.0 - 29.0 etc.); 45°-75° cross fractures of carbonate and quartz.	
80.0	104.0	Fine-grained dark greenish tinged rock; seems to have graded from previous rock (the greenstone); Quartz diabase? although still not very fresh looking. 96.0 - 97.0 - siliceous zone with pyrite.	
104.0	144.0	Fine-grained norite-looking rock; diabase (?) few pyrite fine-grained slugs up to 1/2; rock is dark grey-texture diabase; almost barren of other sulphides.	

NORTHBRIDGE MINES LTD
~~77-201-144~~

Date	Location	Stratigraphy	Hole No.
144.0	147.0	149.0	161.0
		Dark very fine-grained rock (texture indistinguishable) with white feldspar blobs.	P-2
		Dark fine-grained greenstone.	
		"Jasperoid" with faint white feldspar or quartz blobs as in 144.0 - 147.0; odd 1" fracture filling of quartz and pyrite.	
		Dark green fine-grained altered rock; Greenstone (?)	
		Highly siliceous pale blue rock with large rounded blobs of feldspar or quartz; probably a silicified breccia zone; no sulphides.	
		Dark fine-grained rock; greenstone? (Not green)	
		"Jasperoid": 50% pale reddish brown quartz in with blue quartz; no sulphides.	
		Fine-grained dark trap dyke; 30° contact with jasperoid.	
		Bluish jasperoid with few "remnant-like" dark inclusions of basic minerals; no sulphides.	
		Grey (not blue) jasperoid which looks like a porphyry; phenocrysts are grey 1/16 - 1/8" quartz rounded-angular; groundmass; dark grey colour very fine-grained quartz. 247 - 1/8" - 45° slips of chalcopyrite. 249	
		Fine-grained dark green coloured rock; Greenstone (?)	
		Fine-grained dark green rock (Greenstone ?) with 20° contact and very fine-grained contact surface from 258.0 - 260.0 but none at 280.0.	

NORTHBRIDGE MINES LIMITED
~~UNINCORPORATED IN CANADA - 1908 - 1910 - 1911~~

Date _____ Location _____ Bearing _____ Hole No. P-2

Logged to _____ Elevation _____ Dip _____ Property _____

From	To	Description	Sample Nos.
280.0	285.0	Jasperoid; breccia.	
285.0	287.0	Greenstone; ditto 285.0 - 280.0.	
287.0	291.0	Jasperoid.	
291.0	302.0	Greenstone with faint fractures (not as distinct as in upper part of the hole).	
302.0	304.0	Medium-grained dark gabbro with a 1' chilled contact; grain size at 302.5 fine-grained.	
	<u>End.</u>		

DIP TESTS

<u>Footage</u>	<u>Degree</u>	<u>Corrected</u>
100	67	60
200	67	60
300	67	60

NORTHERIDGE MINES LIMITED
~~PALEONTOLOGICAL MUSEUM LIMITED~~

Date September 1952 Location 15/00N 490W Bearing SE Hole No. P-3

Loggode _____ Elevation _____ Dip 41 $\frac{1}{2}$ ^o Property 856864

From	To	Description	Sample Nos.
0.0	9.0	Overburden.	
9.0	11.0	Medium-grained, very dark, altered diorite (?)	
11.0	33.0	Bluish medium-grained jasperoid (same as in P-2) with few spots of reddish quartz; few specs of pyrite throughout.	
33.0	36.0	Siliceous breccia zone; not as pronounced as in P-2 29.0 - 32.0.	
36.0	53.0	Jasperoid; ditto 11.0 - 33.0.	
53.0	53.5	Fine-grained trap dyke (?)	
53.5	57.0	Jasperoid; ditto 36.0 - 53.0.	
57.0	68.0	Fine-grained bluish rock; diorite same as P-2 56.0 - 58.0; no sulphides.	
68.0	90.0	Fine-grained diorite with blebs of white and blue quartz as inclusions (?); matrix rock grades from 68.0 on to finer grained; Quartz diorite breccia (?); few pyrite specs throughout; cross-fractures with quartz and carbonate.	
90.0	97.0	Greatly silicified zone in quartz diorite breccia (?); lots of epidote (cream coloured) and blue quartz.	
97.0	107.5	Quartz diorite breccia; ditto 68.0 - 90.0 this grades to a breccia rock, in 3 ft. (97.0-100.0) that is very siliceous and bluish in colour making it look like a jasperoid breccia, although its probably a quartz diorite breccia silicified; no sulphides.	

JK

NORTHBIDGE MINES LIMITED
~~NALCONBRIDGE NICKEL MINES LIMITED~~

Date _____ Location _____ Bearing _____ Hole No. P-3

Grade _____ Elevation _____ Dip _____ Property _____

Elev.	to	Description	Sample Nos.
107.5	156.0	<p>Quartz diorite with sulphides; breccia in a few spots. 109.0 - 111.4 - rocky massive sulphides. 113.5 - 115.0 - rocky mass. 121.0 - 124.0 - " " 124.0 - 127.0 - massive. 127.0 - 132.0 - rocky mass. 143.5 - 153.0 - " " 154.6 - 156.2 - massive. considerable amount of sulphides in above sections contain chalcopyrite in amounts up to 1.7% Cu.</p>	
156.0	169.0	<p>Very dark medium-grained rock that looks like a recrystallized greenstone rather than a gabbro; some massive sulphides; porphyroblasts of tiny hornblendes (?); numerous large epidote zones that are network-like and seem to brecciate the host rock.</p>	
169.0	177.0	<p>Quartz diorite; altered (not fresh); not very siliceous; sulphide spotting.</p>	
177.0	198.0	<p>Dark green very fine-grained rock; probably a greenstone; 45 - 60° cross-fracture fills of carbonate and quartz; few spotting of sulphides.</p>	
198.0	220.0	<p>Fine-grained quartz diorite with sulphides.</p>	
220.0	240.0	<p>Very fine-grained diorite (?) greenstone. 239.0 - intrusion of "jasperoid".</p>	
240.0	265.0	<p>"Jasperoid" breccia; good 45° contact at 240.0; or a much silicified quartz diorite breccia; white and blue quartz blebs throughout; very few sulphides.</p>	
265.0	279.0	<p>Fine-grained diorite (?); resembles the previous rock but has no quartz inclusion blebs and is much less siliceous.</p>	

~~NORBRIDGE MINES LIMITED~~
~~FALCONBRIDGE MINES LIMITED~~

Date _____ Location _____ Bearing _____ Hole No. P-3

Depth _____ Elevation _____ Dip _____ Property _____

Depth	Elevation	Description	Sample Nos.
279.0	285.0	Quartz diorite breccia or jasperoid breccia.	
285.0	287.0	Fine-grained diorite with cross-fracture fill. last piece of core has chalcopyrite and pyrrhotite on slip face.	
	<u>End.</u>		
<u>DIP TESTS</u>			
		<u>Footage</u>	<u>Degrees</u>
		<u>Corrected</u>	
		0.0	41.5
		100.0	30.5
		250.0	49.5
			42
			40

~~NORTHERIDGE NICKEL MINES~~
~~PACIFIC NICKEL MINES LIMITED~~

Date September 1958 Location 16/00N 510W Bearing SE Hole No. P-4

Loggode _____ Elevation _____ Dip 42° Property 854264

From	To	Description	Sample Nos.
0.0	4.0	Overburden.	
4.0	25.0	Dark greenstone with very numerous carbonate cross-fracture fills.	
25.0	26.0	Breccia zone in greenstone with 50% carbonate.	
26.0	36.0	Greenstone; ditto 4.0 - 25.0 .	
36.0	49.0	Very dark medium-grained rock with about 25% light coloured mineral feldspar (?); not as many cross-fracture fills as in greenstone; probably a <u>gabbro</u> ; considerable epidote 45-49.	
49.0	105.0	Fine-grained quartz diorite breccia? with feldspar inclusions; scattered sulphides throughout.	
105.0	107.0	Jasperoid.	
107.0	112.0	Fine-grained quartz diorite breccia; ditto 49-105.0.	
112.0	115.0	Fine-grained green greenstone.	
115.0	123.0	Fine-grained quartz diorite breccia (?) ditto 107.0 - 112.0.	
123.0	126.0	Fine-grained greenstone. 125.0 - sulphide spotting.	
126.0	129.0	Quartz diorite breccia; ditto 115.0 - 123.0; spotting.	
129.0	135.0	Fine-grained diorite; barren.	
135.0	153.0	Fine-grained greenstone (?); highly siliceous in spots; sulphide spotting.	
153.0	209.0	Quartz diorite breccia with some spotting.	

NORTHBIDGE MINES LIMITED
~~FALCONBRIDGE NICKEL MINES LIMITED~~

Date _____ Location _____ Bearing _____ Hole No. P-4

Loggeds _____ Elevation _____ Dip _____ Property _____

From	To	Description	Sample Nos.
209.0	262.0	Jasperoid with some red quartz; almost barren of sulphides;	
262.0	271.0	Very siliceous breccia; jasperoid breccia (?) few blue quartz and white feldspar inclusions.	
271.0	285.0	Fine-grained diorite; a few small blue quartz inclusions; few cross-fracture fills of carbonate.	
	<u>End.</u>		
<u>DIP TESTS</u>			
	<u>Footage</u>	<u>Degrees</u>	<u>Corrected</u>
	125	49.5	41.5
	275	49	41
	0	42 (by level rule)	

NORRIDGE MINES LIMITED
~~ALL INFORMATION CONTAINED HEREIN IS UNCLASSIFIED~~

Date October 1952 Location 16/00N 440W Bearing _____ Hole No. P-6

Latitude _____ Elevation _____ Dip 90° Property 856864

From	To	Description	Sample Nos.
0.0	4.0	Overburden.	
4.0	16.0	Quartz diorite (not breccia) almost barren.	
16.0	75.5	Quartz diorite breccia; few spottings of sulphides.	
75.5	78.5	Very feldspathic and siliceous zone; jasperoid (?)	
78.5	199.0	Mostly quartz diorite breccia; few short greenstone sections; minor sulphides throughout. 160.5 - 164.0 - jasperoid. 177.0 - 199.0 - an abundance of small rounded blue and white quartz inclusions; in places the rock is so siliceous it might be called a jasperoid.	
199.0	276.0	75% granitized rock; 50% red and pink feldspar and blue quartz.; no sulphides; original rock unrecognizable; in places 45° foliation; red coarse-grained feldspar stringer throughout.	
	End.		

DIP TESTS

<u>Footage</u>	<u>Degrees</u>	<u>Corrected</u>
110	90	90
190	90	90

OCT 3 1952

NORTHERIDGE MINES LIMITED
~~PALCONBRIDGE NICKEL MINES LIMITED~~

Date October 1952 Location 18/25N 405W Bearing N Hole No. P-13

Logged Elevation Dip 57° Property

From	To	Description	Sample Nos.
0.0	10.0	Overburden.	
10.0	94.0	Very siliceous quartz diorite breccia; some very short greatly contorted and altered sections; few pyrite specs.	
94.0	123.0	Quartz diorite; not breccia; no sulphides.	
123.0	215.0	Quartz diorite breccia; few sulphides.	
215.0	252.0	Jasperoid; good contact at 215.0; bluish; has the appearance that it could be the quartz diorite silicified considerably; few pyrite specs scattered throughout.	

DIP TESTS

<u>Footage</u>	<u>Degree</u>	<u>Corrected</u>
120	45	37
250	47.5	39.5

~~NORTHERIDGE MINES LIMITED~~
~~NORTHERIDGE MINES LIMITED~~

Date October 1958 Location 17/92N 445W Bearing N Hole No. P-14

Loghole _____ Elevation _____ Dip 34.5° Property 856864

	To	Description	Sample Nos.									
0.0	7.0	Overburden.										
7.0	111.0	Quartz diorite breccia. 49.0 - 63.0 - 5 to 10% sulphides; pyrite and some pyrrhotite and chalcopyrite.										
111.0	117.0	Jasperoid.										
117.0	151.0 End	Quartz diorite breccia; light spotting throughout.										
<u>DIP TESTS</u>												
<table border="1" style="width: 100%; border-collapse: collapse;"> <thead> <tr> <th style="text-align: center;"><u>Footage</u></th> <th style="text-align: center;"><u>Degree</u></th> <th style="text-align: center;"><u>Corrected</u></th> </tr> </thead> <tbody> <tr> <td style="text-align: center;">75</td> <td style="text-align: center;">42</td> <td style="text-align: center;">34.5</td> </tr> <tr> <td style="text-align: center;">150</td> <td style="text-align: center;">40</td> <td style="text-align: center;">33</td> </tr> </tbody> </table>				<u>Footage</u>	<u>Degree</u>	<u>Corrected</u>	75	42	34.5	150	40	33
<u>Footage</u>	<u>Degree</u>	<u>Corrected</u>										
75	42	34.5										
150	40	33										

DEC 3 1952

~~NORTBRIDGE MINES LIMITED~~
~~FALCONBRIDGE SILVER MINES LIMITED~~

Date October 1962 Location 1772N 43W Bearing W Hole No. P-15

Longitude _____ Elevation _____ Dip 82° Property 356864

Depth	Elev.	Description	Sample Nos.
0.0	10.0	Overburden.	
10.0	45.0	Quartz diorite breccia; few spots of pyrite.	
45.0	57.0	Diorite; fresh unaltered.	
57.0	113.0	Quartz diorite breccia; specs of pyrite and pyrrhotite. 66.0 - 2" sulphides mostly pyrite. 66.0 - 85.0 - same as 57.0 - 66.0. 85.0 - 98.0 - 10-15% sulphides. 91.0 - 93.0 - 50%. 98.0 - 113.0 - sparse sulphide spotting mostly pyrite.	
113.0	157.0	Quartz diorite; not brecciated.; some short siliceous sections; mineralization practically nil.	
	<u>End.</u>		

~~HORTONBRIDGE MINES LIMITED~~
~~PALOMONTAGE NICKEL MINES LIMITED~~

Date October 1952 Location 17/60N 490W Bearing _____ Hole No. P-16

~~LOGBOOK~~ Elevation _____ Dip 90° Property _____

From	To	Description	Sample Nos.
0.0	5.0	Massive weathered sulphides.	
5.0	5.5	Md; Fault!!	
5.5	40.0	Quartz diorite breccia; spotted with sulphides. 22.0 - 2" massive.	

NORTHBRIDGE MINES LIMITED

November 1968

A-2200N 650W

Vertical

P-10

0.0	4.0	Casing.
4.0	15.0	Quartz diorite breccia; no mineralization.
15.0	26.5	Fine grained diorite; no mineralization.
26.5	47.0	Quartz diorite breccia inclusions up to 8" of granitic rock; no mineralization.
47.0	50.0	Fine grained diorite - possibly inclusion; no mineralization.
50.0	80.0	Quartz diorite breccia; scattered specks of pyrite and minor pyrrhotite.
80.0	112.0	Quartz diorite breccia; siliceous with feldspathic inclusions; shows gneissic tendency in places.
112.0	124.5	Fine grained greenstone (inclusion ?); a few scattered specks of pyrite.
124.5	155.0	Quartz diorite breccia; some pyrrhotite-pyrite spotting; less than 1% sulphides.
155.0	174.0	Greenstone - medium to fine grained.

DIP TESTS

<u>Footage</u>	<u>Degrees</u>	<u>Corrected</u>
80	90	
170	89	

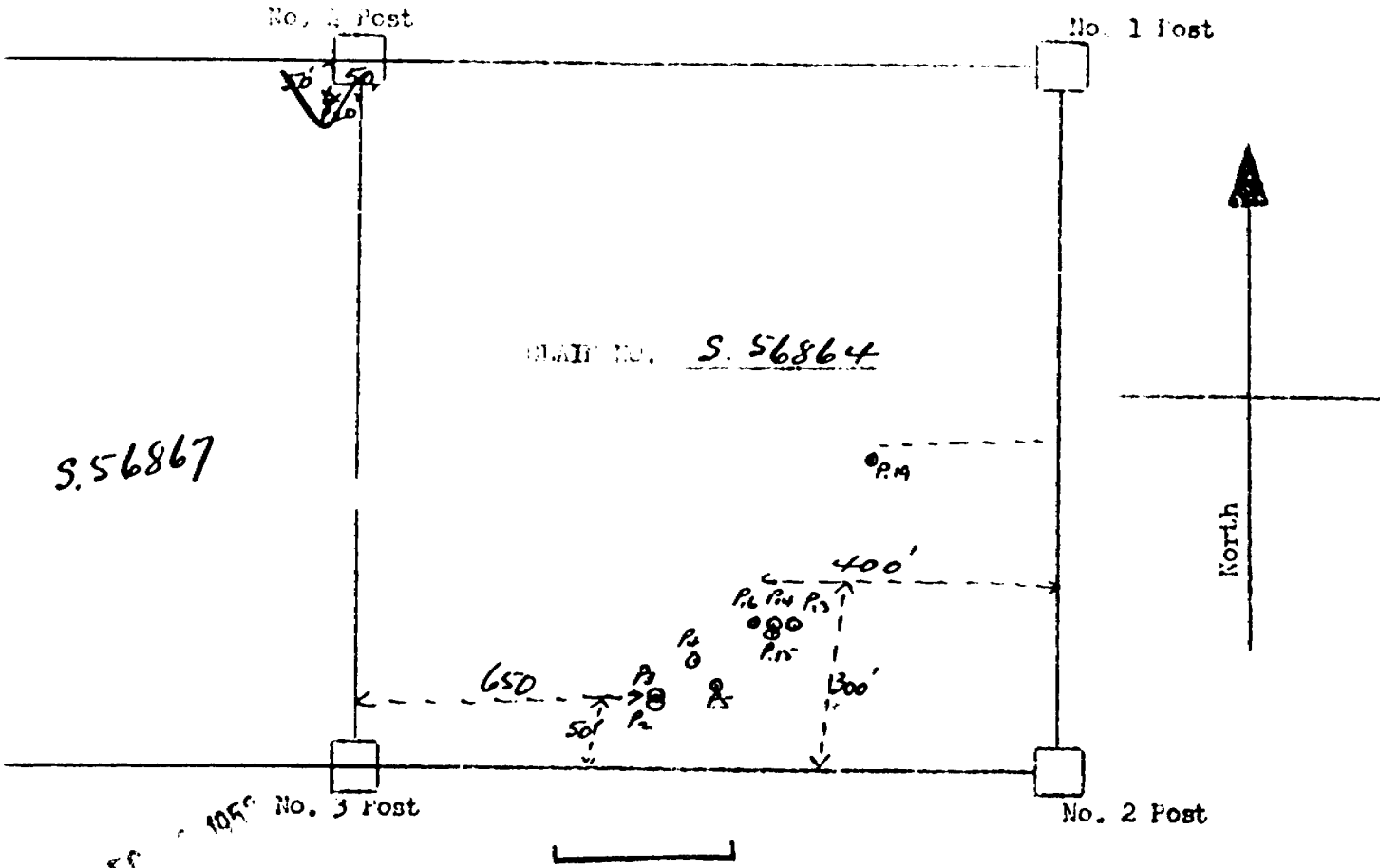
NORTHBRIDGE
~~FALCONBRIDGE~~ NICKEL MINES LIMITED
TORONTO
 Falconbridge, Ontario

2155
 1986' drilling done on the following listed claims
 being submitted to satisfy the assessment requirements
 on each.

S.56862-3-4-5-6, S.57460-61-62-63, 57843
~~S.56864-67-69-70-81-82-85; S.60354-55, 56~~

Drilling was done on claims # S.56864 and ~~S.56867~~.
 S.57460

PARKIN
 TWP



SCALE:- 1 INCH to 330 FEET

NORTHBRIDGE MINES LIMITED

November 1958

B-2100M 685W

West on line P-20

0.0

5.0

Casing.

5.0

124.0

Rhyolite ? silicified fine grained; barren;
shows some re-crystallization.

DIP TESTS

<u>Footage</u>	<u>Degrees</u>	<u>Corrected</u>
60	39	32
120	40	32.5

DEC 2 1958

NORTHBRIDGE

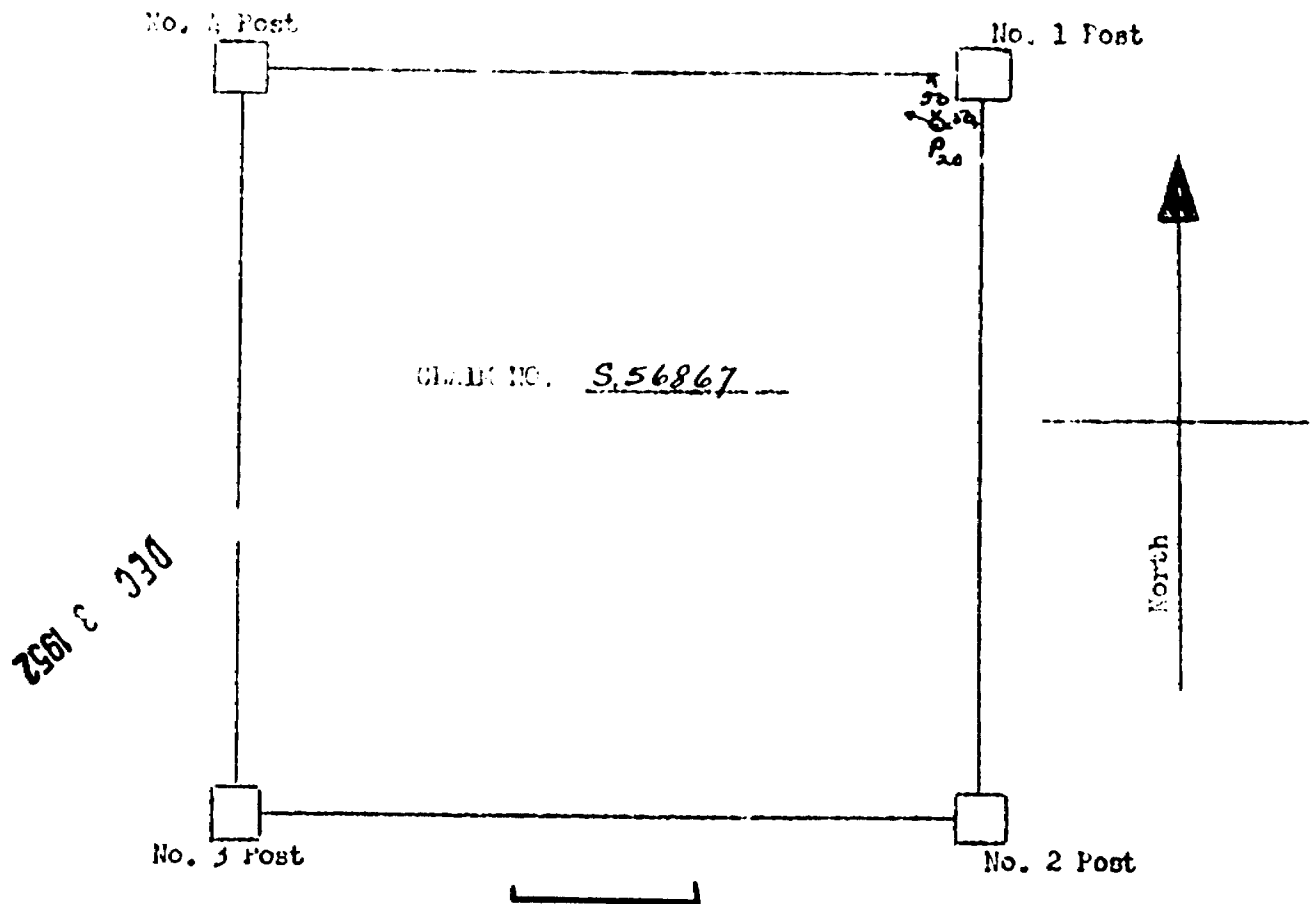
FALCONBRIDGE NICKEL MINES LIMITED

Falconbridge, Ontario

124' drilling done on claim
S. 56867 to be applied to the following
claims.

S. 56867-68-69-70-81-82-83
~~S. 60354~~, S. 60354, S. 56865.

PARKING
TRUCK



SCALE:- 1 INCH to 330 FEET

NORTHBRIDGE MINES LIMITED

November 1952

B-3900K 600E

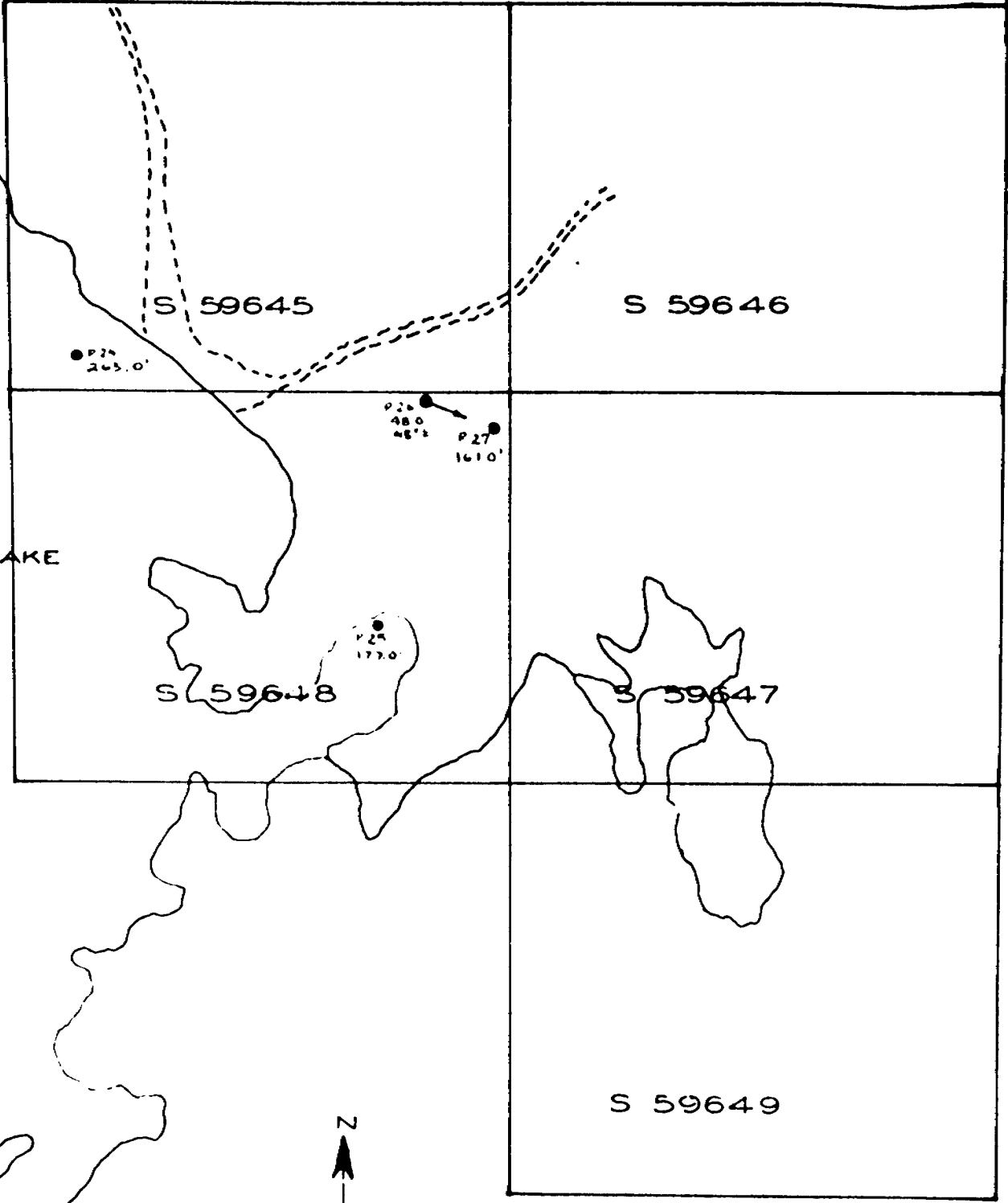
East on line

P-21

0.0	16.0	Casing.
16.0	124.0	Acid intrusive or highly granitized greenstone; considerable variation in texture.
124.0	197.0	Greenstone; fine-grained; sheared and talcose
197.0	245.0	Medium grained greenstone.
245.0	374.5	Fine grained greenstone. 252.0 - 265.0 - sheared and talcose.
374.5	403.0	Quartz diorite, chilled at margin, grades to normal grain size in 4 ft.; scattered specks of pyrite and minor pyrrhotite.

DIP TESTS

<u>Footage</u>	<u>Degrees</u>	<u>Corrected</u>
50	43.5	36
200	42.5	35
400	40.5	33



GE LAKE

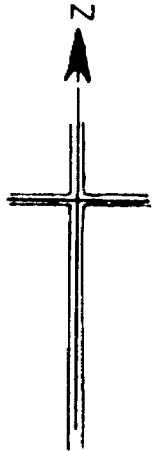
S 59645

S 59646

S 59648

S 59647

S 59649



NORTHERIDGE MINES LIMITED

Hole No.: P-27

Date: February 1953

Location: B3600N/2800E

Bearing: ---

Dip: Vertical

Total Depth: 167.0'

<u>From</u>	<u>To</u>	
0.0	5.0	Overburden
5.0	167.0	Greenstone.
	5.0 - 21.0	Medium grained
	21.0 - 24.0	Breccia zone with scattered chalcopyrite.
	24.0 - 34.0	Massive greenstone
	34.0 - 44.0	64' fracturing at 20° to core.
	44.0 - 54.0	fracturing 45°
	54.0 - 64.0	Black cleaved core
	64.0 - 74.0	<u>Fracture Zone</u>
	74.0 - 84.0	fracturing 45°
	84.0 - 125.0	Slight breccia (haem) in veins.
	125.0 - 157.0	Massive greenstone
	157.0 - 167.0	

End of Hole

WIP TEST

<u>Footage</u>	<u>Degrees</u>	<u>Degrees Corrected</u>
100'	90°	90°
165'	88½°	88°

NORTHBRIDGE MINES LIMITED

Hole No.: P-26

Date: February 1953

Location: E3800N/2700E

Bearing: On Line X Dip: 45°

Total Depth: 48.0'

<u>From</u>	<u>To</u>	
0.0	48.0	Gravel

Unable to start into bedrock.

DIP TEST

No test. Hole was not collared.

NORTHBRIDGE MINES LIMITED

Hole No.: P-25

Date: February 1953

Location: E3800N/2800E

Bearing: ---

Dip: Vertical

Total Depth: 177.0'

<u>From</u>	<u>To</u>	
0.0	23.0	Casing into lake water
23.0	96.0	Greenstone. Fairly soft with consistent fractures 25° to core. Poor core recovery 27'. Quartz veining at 37'.
96.0	123.0	Greenstone becomes brecciated, core is black, and the fractures are shiny and smooth up to 113' (40°) <u>Fault Zone ???</u>
123.0	177.0	Greenstone.
End of Hole		

DIP TEST

<u>Footage</u>	<u>Degrees</u>	<u>Degrees Corrected</u>
100'	88°	87°
177'	89°	88½°

Parkin - Norman

NORTHBIDGE MINES LIMITED

Hole No. P-24

Date: February 1953

Location: B3600N/1800E

Bearing: ---

Dip: Vertical

Total Depth: 265.0'

<u>From</u>	<u>To</u>	
0.0	34.0	Casing
34.0	135.0	Medium grained greenstone, same as in P-23. 6" core missing at 61' and 72'
135.0	162.0	Fine grained greenstone.
162.0	191.0	Medium grained greenstone.
191.0	201.0	Siliceous greenstone.
201.0	206.0	Jasperoid.
206.0	240.0	Quartz diorite.
240.0	265.0	Greenstone (fine grained)
		End of Hole

DIP TEST

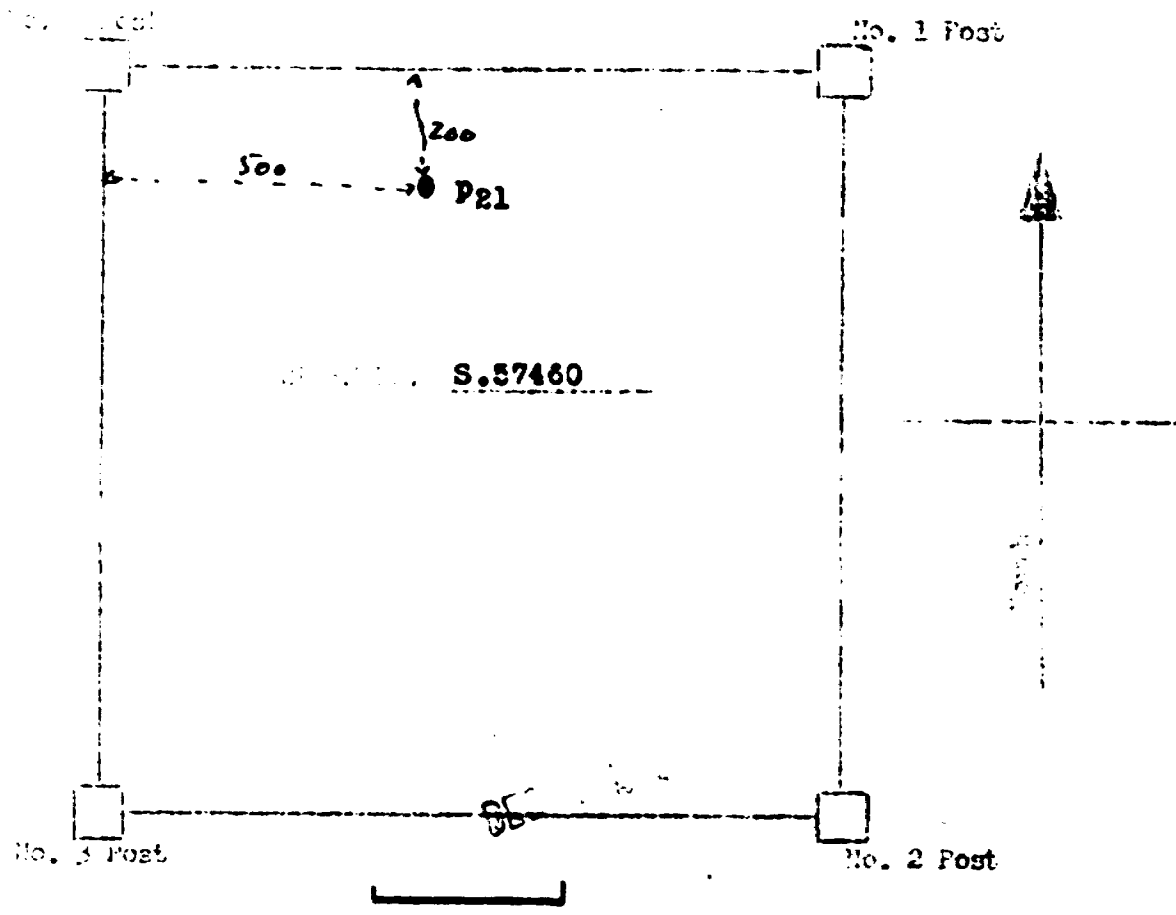
<u>Footage</u>	<u>Degrees</u>	<u>Degrees Corrected</u>
150	90°	90°
265	89°	88½°

NORTBRIDGE
~~SILVERHILL~~ NICKEL MINES LIMITED
TORONTO
Fairbairnbridge, Ontario

403' drilling done on claim # S.57460 to satisfy the assessment requirements on the following listed claims.

64
S.56862-63-66-68; S.57460.-1-2-3
S-57843

PARKIN Twp.



SCALE:.. 1 INCH to 330 FEET