



41155W0122 0010A1 PARKIN

010

PARKIN TOWNSHIP REPORT #10

This file contains work performed by Jonsmith Gold Mines Ltd. on claim:

S. 42677	Holes #1;	<i>Footage</i> 115'	March, 1951
	#2;	204'	March, 1951
	#1;	94'	May, 1947
	#2;	72.5'	May, 1947
	#3;	85.1'	May, 1947
	#4;	90'	May, 1947
	#5;	110.5'	May, 1947
	#6;	116.3'	May, 1947
	#7;	265.0	May, 1947
	#8;	40.5'	May, 1947
	#9;	119.0'	May, 1947
	#10;	154.7'	May, 1947
	#11;	164.7'	May, 1947
#12;	145.0'	June, 1947	
#13;	<u>215.5'</u>	June, 1947	

TOTAL: 15 D H 1991.7 FT

S 42677

P. 100. 10

5-13-303

SONSMITH GOLD MINES LTD.

D. D. HOLE No 1. 45° COMPLETED MAR 23 1951  
DEPT OF HOLE 115.0'

0-5 CASING.

5-46 LIMESTONE.

46-115 DIORITE.

MINERALIZED SECTIONS.

	SAMPLE NO	CU	NI.	
47-52.	1			} 1.32% Cu 0.814% Ni
52-57	2			
57-62	3			
62-68.	4			
68-73.	5			
73-75	6			
91.3-94.3.	7.	8.13%	1.33%	Cu Ni.

JONSMITH GOLD MINES LTD.

HOLE No 2. 55° COMPLETED. MAR 25/51  
2040' DEPTH OF HOLE

0 - 105.5 LIMESTONE.  
105.5 - 159.3 DIORITE.  
159.3 - 204 QUARTZITE.

MINERALIZED SECTION.

	SAMPLE No.	
132.3 - 135.3	8	} 2.4% CU 1.2% Ni.
135.3 - 142.7	9	
142.7 - 147.7	10	
147.7 - 149.0	11	
149.0 - 151.0	20	
151.0 - 153.5	12	
153.5 - 157.8	21	
157.8 - 159.3	13	

J. F. Cushman

No. 1 Post  
S 42677

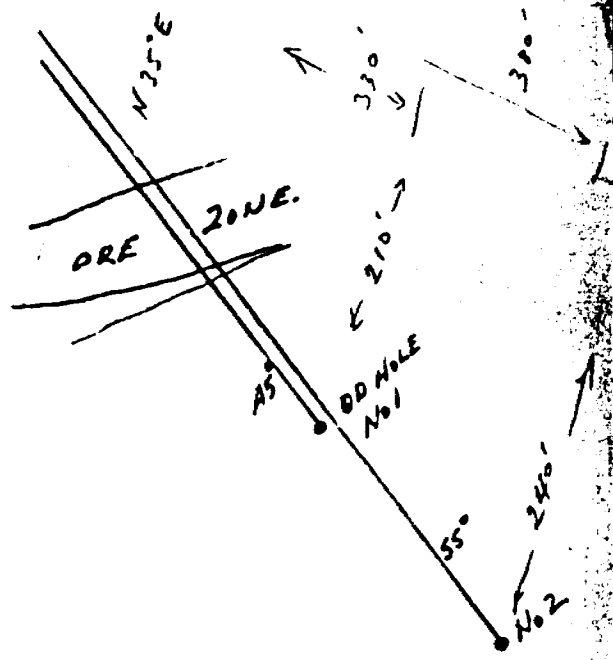


750' S.E.  
FROM #1 POST  
TO #1 HOLE.

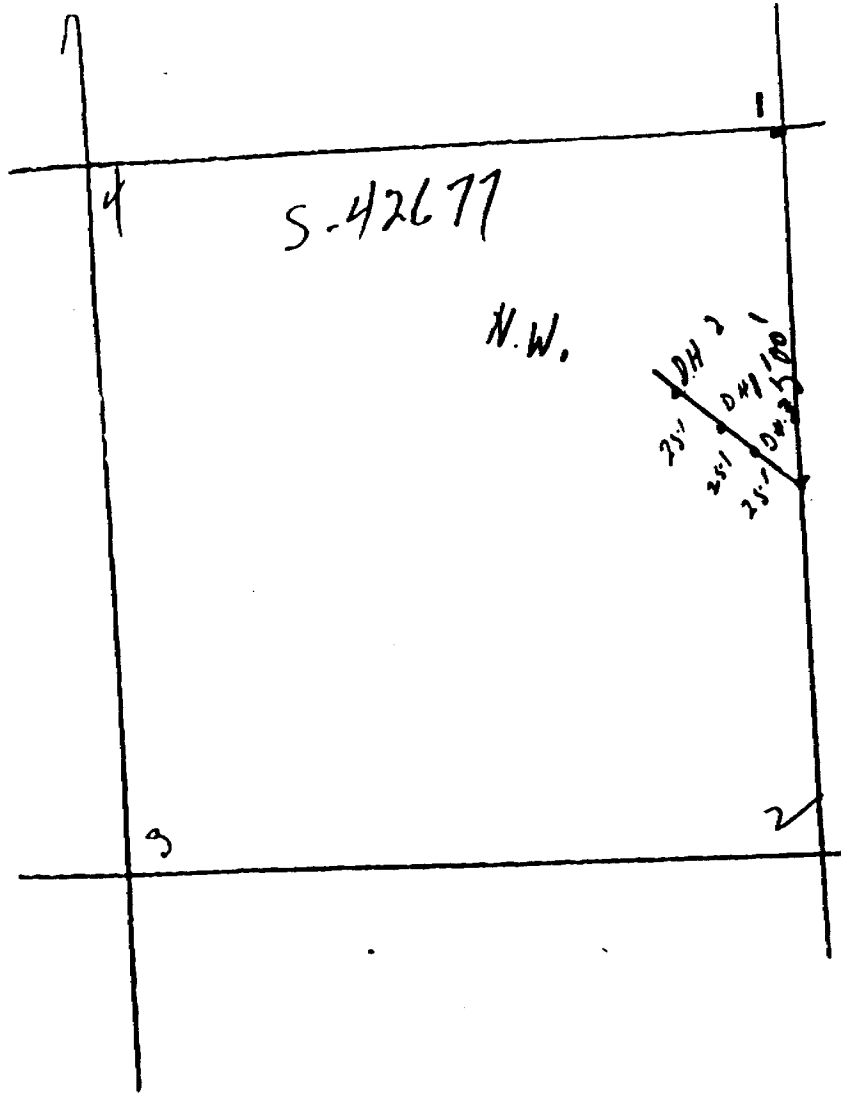
PARKIN TWP.

SCALE 40' = 1"

JOHNSON WITH.



Partin Twp.



W.P. CORKING  
GEOLOGIST

S.42677

MOND DRILL LOG

DDH NO. 1

PROPERTY - - Jonsmith Gold Mines Ltd., Parkin Twp.,

DATE May 14, 1947

LOCATION - - No.1 Zone  
Trench #1

BEARING N 48°E (M)

DIP -- 45°

GEOLOGY

0.0	6.0	Casing
6.0	8.0	Casing core -- return water lost
8.0	20.6	Limestone; light and dark interbeds; some minor faulting
20.6	28.0	Green carbonatized tuffs (?) with some carbonate stringers; very soft (possible serpentized) chloritic and sheared.
28.0	61.0	Mineralized "gabbro-diorite"; massive with no shearing and little non-metallic alteration; pyrite, pyrrhotite, chalcopyrite as described, occurring in blebs, definite stringers and disseminated masses.
61.0	74.7	Dark, grey green siliceous fragmental - possible a brecciated conglomerate
74.7	94.0	Greenish-black siliceous sediment (cherty). Very fine grained
	94.0	End of Hole.

Dec 9/48

## Diamond Drill Log

W. P. Corking

Property Jonsmith Gold Mines Ltd, Parkin Twp.

Geologist

DDH No. 1

Date May 14, 1947

Bearing N48°E (M)

Dip -45°

Location No. 1 Zone  
Trench #1

CL 42677

Sample No.	DESCRIPTION	FOOTAGE	LENGTH Ft.	ASSAY Oz/Ton Av	VALUE \$/Ton
2756	Green schist (tuff)-Highly carb'd - VLM	23.8-26.3	2.5	Tr	Tr
2951	Carb'd diabase-5-10% diss chalco	26.3-27.0	0.7	0.02	0.70
2952	Tuffs - a little diss chalco	27.0-27.9	0.9	0.005	0.17
2953	Carb'd diorite-rwm chalco, py (1"massive)	27.9-28.8	0.9	0.34	11.90
2954	Massive diorite-a l diss py, chalco	28.8-30.4	1.6	Tr	Tr
2955	Do.-a little more chalco but still less than 1% and somewhat localized in fractures.	30.4-31.7	1.3	0.01	0.35
2956	Do.	31.7-32.8	1.1	0.04	1.40
2957	Do. 5-10% chalco & some blebby 7 diss py	32.8-34.8	2.0	0.05	1.75
2958	Do. same chalco & py, with a l pyrrh which is weakly magnetic.	34.8-36.9	2.1	0.04	1.40
2959	Do. 2% chalco & pyrrh, some pyrite	36.9-38.9	2.0	0.04	1.40
2960	Do. 2% py, traces of chalco, pyrrh	38.9-40.3	1.4	0.08	2.80
2961	Do. 2% diss pyrrh, chalco	40.3-41.5	1.2	0.02	0.70
2962	Do. 5% diss py, pyrrh, chalco; incl 4" massive	41.5-43.2	1.7	0.04	1.40
2963	Do. 10% pyrrh, chalco; VLpy	43.2-44.9	1.7	0.005	0.17
2964	Do. 5% diss py, pyrrh, chalco & 4", 2" massive pyrite, pyrrhotite.	44.9-47.5	2.6	0.03	1.05
2965	Do. 8% diss py, pyrrh, chalco	47.5-49.6	2.1	0.08	2.80
2966	Do. 10% diss py, pyrrh, some chalco. incl a 12" section with over 50% pyrrh, py	49.6-51.8	2.2	0.08	2.80
2967	Do. 1% diss chalco	51.8-53.3	1.5	Tr	Tr
2968	Do. Traces diss py, chalco	53.3-56.8	3.5	Tr	Tr

Diamond Drill Log  
 Property Jonesmith Gold Mines Ltd.  
 Location  
 W. P. Corking  
 Geologist

DDH No. 1  
 Date  
 bearing  
 Dip

Sample No.	DESCRIPTION	FOOTAGE	LENGTH Ft.	ASSAY Oz/Ton	VALUE \$/TON
2969	Barren white calcite	56.8-57.8	1.0	Tr	Tr
2970	Do. At breccia contact. VLM	57.8-61.7	3.9	Tr	Tr
2971	Siliceous breccia; a l diss chalco	61.7-62.4	0.7	Tr	Tr
2972	Grey siliceous fragmental VLM	62.4-64.3	1.9	0.01	0.35
2973	Do - a little diss cubic pyrite	73.0-74.9	1.9	Tr	Tr
2974	Cherty black sediment; 1/2% diss py in small cubes	74.9-79.9	5.0	Tr	Tr
2975	Do	79.9-85.3	5.4	Tr	Tr
2976	Do	85.7-89.5	4.2	Tr	Tr
2977	Do	89.5-94.0	4.5	Tr	Tr

A composite sample was weighed out, consisting of aliquot parts of samples 2955-2966 inclusive, in proportion to the core lengths which these samples represent. The composite sample was assayed with the following results:

Nickel	1.76%	) Core length - 21.4 feet.
Copper	1.88%	
Platinum	0.13 oz. per ton	
Gold	0.03 oz. per ton	

GEOLOGY

- 0.0 - 6.0 Casing
- 6.0 - 8.0 Casing core - return water lost
- 8.0 - 20.6 Limestone; light and dark interbeds; some minor faulting
- 20.6 - 28.0 Green carbonatized tuffa(?) with some carbonate stringers; very soft (possibly serpentinized) chloritic and sheared.
- 28.0-61.0 Mineralized "gabbro-diorite"; massive with no shearing and little non-metallic alteration; pyrite, pyrrhotite, chalcopyrite as described, occurring in blebs, definite stringers and disseminated masses.
- 61.0-74.7 Dark, grey-green siliceous fragmental - possibly a brecciated conglomerate.
- 74.7-94.0 Greenish-black siliceous sediment (cherty). very fine grained
- 94.0 End of hole.



GEOLOGIST

DIAMOND DRILL LOG

PROPERTY -- Jonsmith Gold Mines Ltd.,

LOCATION No. 1 Zone  
Trench #1.

DDH No. 2

DATE May 15, 1947

BEARING N 48° E (Mag)

DIP 45°

GEOLOGY

0.0	3.5	Casing
3.5	4.5	Casing core -- return water lost
4.5	18.7	Limestone; as in DDH No. 1
		13.8 - Rusty Gouge 4"
18.7	26.7	Soft light grey-green carbonatized chloritic tuffs (?) Apparently unshered.
26.7	32.0	Dark grey-green siliceous fragmental. Possible a brecciated chilled diorite. Some veinlets of mineralization - chiefly chalco pyrite
32.0	67.0	Mineralized diorite 41.3 - 41.5" rusty gouge probably from this run or maybe caving from 13.8
67.0	72.5	32.5 - 49.0 - ore section Siliceous breccia, a little chalco pyrite in veinlets. Apparently a brecciated zone in the chert.
	72.5	End of hole.

W. P. Corking

Diamond Drill Log

DDH No. 2

property Jonsmith Gold Mines Ltd.

Geologist

Date May 15, 1947

Location No.1 Zone  
Trench #1

Bearing N 48° E (Mag)  
Dip -45°

Sample No.	DESCRIPTION	FOOTAGE	LENGTH Ft.	ASSAY Oz/Ton	VALUE \$/Ton
2978	Sil fragmental or brecciated diabase. A 1 PY	26.7-28.1	1.4	0.005	0.17
2979	Do. 1-2% chalco in irregular veinlets	28.1-32.0	3.9	0.005	0.17
2980	Do. 5% chalco in veinlets & 1" massive	32.0-34.2	2.2	0.17	3.50
2981	Massive sulphides of which 70% is pyrrh, 20% chalco, 10% pyrite. Some pent(?)	34.2-36.4	2.2	0.02	0.70
2982	"Diabase" FMM pyrrh, chalco with 12" massive pyrrhotite with younger pyrite & some chalco	36.4-38.7	2.3	0.02	0.70
2983	Do. 2-5% diss pyrrh & chalco & a 1 py	38.7-41.0	2.3	0.02	0.70
2984	Do. 1-2% diss chalco, pyrrh	41.0-43.3	2.3	Tr	Tr
2985	Do. Do. some calcite in a stringer	43.3-46.7	3.4	0.57	19.95
2986	Do. 10% py, pyrrh, pent and a 1 chalco. Includes 6" of 60% py, pyrrh. All in blebby aggregates.	46.7-49.1	2.4	0.08	2.80
2987	Do. 2% chalco in veinlets and disseminated. Some pent(?)	49.1-52.3	3.2	0.01	0.35
2988	10% chalco & a 1 py. Incl. also 6" massive chalco in brecciated chert at contact with diorite. Some pent(?)	66.9-69.0	2.1	0.005	0.17
2989	Siliceous brecciated 3% py, pyrrh, chalco	69.0-71.3	2.3	0.02	0.70

A composite sample was weighed out, consisting of aliquot parts of samples 2979 to 2987 inclusive, in proportion to the core lengths which these samples represent. The composite sample was assayed with the following results:

Nickel	1.42%	) Core length - 24.2'
Copper	1.44%	
Platinum	0.12 ounces per ton	
Gold	0.06 ounces per ton	

W.P. Corking

Geologist

Diamond Drill Log

Property Jonsmith Gold Mines Ltd.

Location

DDH No.2

Date

Bearing

Dip

Sample No.	DESCRIPTION	FOOTAGE	LENGTH Ft.	ASSAY Oz/Ton	VALUE \$/Ton
------------	-------------	---------	---------------	-----------------	-----------------

GEOLOGY

0.0 - 3.5	- casing				
3.5 - 4.5	- casing core - return water lost				
4.5 - 18.7	- Limestone: as in DDH No.1 13.8 - rusty gouge 4"				
18.7- 26.7	- Soft light grey-green carbonatized chloritic tuffs (?) Apparently unshered.				
26.7- 32.0	- Dark grey-green siliceous fragmental. Possibly a brecciated chilled diorite. Some veinlets of mineralization - chiefly chalcocopyrite.				
32.0- 67.0	- Mineralized diorite 41.5 - 1" rusty gouge probably from this run or maybe caving from 13.8 42.5 - 48.0 - ore section				
67.0- 72.5	- Siliceous breccia, a little chalcocopyrite in veinlets. apparently a brecciated zone in the chert.				
72.5	- End of Hole.				

W.P. CORKING

GEOLOGIST

DIAMOND DRILL LOG

PROPERTY -- Jonsmith Gold Mines Ltd.,

LOCATION No. 1 Zone  
Trench #1

DDH NO. 3

DATE May 1947

BEARING N 48° E (M)

DIP 45°

GEOLOGY

0.0	4.0	Casing
8.0	10.0	Casing core -- return water lost
10.0	31.4	Limestone
31.4	32.2	Green tuffs slightly brecciated
32.2	44.4	Dark grey-black cherty breccia with some mineralization. Intruded by narrow dike fingers.
44.4	59.8	Pink dike (granodiorite) medium grained, uniform - slightly altered near contacts.
59.8	66.3	Brecciated siliceous chert as above the dike - grading at 66.3 - 85.0 massive fine grained cherty sediment as bottom of holes 1 and 2.
	85.0	End of Hole

Note; The dike in this hole does not have quite the same appearance as the dike containing the ore in the other holes.

W. P. Corking

Diamond Drill Log

DDH No. 3

Geologist.

Date May 1947

Property Ironsmith Gold Mines Ltd,

Bearing N48°E (M)

Location No.1 Zone  
Trench #1

Dip -45°

Sample NO.		FOOTAGE	LENGTH Ft.	ASSAY Oz/Ton	VALUE \$/Ton
2744	Siliceous breccia; traces pyrite-includes 2" calcite vein	32.3-35.4	3.1	Nil	Nil
1	Siliceous breccia & a little pyrite and chalco	35.4-37.2	1.8	0.02	0.70
2745	Siliceous breccia & a l diss pyrite	37.2-42.2	5.0	Nil	Nil
2	Siliceous breccia & a l pyrite & chalco	42.2-44.0	1.8	0.02	0.70
2746	Siliceous breccia & a l pyrite and traces chalco	44.0-46.9	2.9	Nil	Nil
2747	Diorite VLM	48.9-50.4	3.5	Tr	Tr
3	Do. Do.	50.4-51.1	0.7	0.03	1.05
2748	Do. Do.	51.1-54.4	3.3	Nil	Nil

GEOLOGY

- 0.0 - 4.0 - casing
- 6.0 - 10.0 - casing core - return water lost
- 10.0 - 31.4 - Limestone
- 31.4 - 32.2 - Green turfs slightly brecciated
- 32.2 - 44.4 - dark grey-black cherty breccia with some mineralization. intruded by narrow dike fingers.
- 44.4 - 50.8 - Pink dike (granodiorite) medium grained, uniform - slightly altered near contacts.
- 50.8 - 66.2 - brecciated siliceous chert as above the dike - grading at 66.2 - 85.0 massive fine grained cherty sediment as at bottom of holes 1 and 2.
- 85.0 - end of hole.

Note: The dike in this hole does not have quite the same appearance as the dike containing the ore in the other holes.

W.P. CORKING

GEOLOGIST

DIAMOND DRILL LOG

DDH NO. 4

PROPERTY - Jonsmith Gold Mines Ltd.,

DATE

LOCATION No. 1 Zone  
Trench #2

BEARING

DIP 45°

GEOLOGY

0.0	4.0	Casing
4.0	6.0	Casing core -- return water lost
6.0	15.7	Limestone
15.7	40.5	Diorite intrusive (pink Feldspar) - 4" breccia at the limestone contact
		35.8 - 36.8 - mineralized breccia
		37.4 - 38.4 - mineralized breccia
46.5	46.5	Contact at 20° and slicken sided. Dark grey-green, highly brecciated, siliceous sediment(?) Very little mineralization.
46.5	74.3	Uniform green diorite without the pink feldspar i.e. similar to that in the first holes - possible a flow. SOME disseminated mineralization.
		55.3 - 58.5 - massive ore mineralization, after which, some 6-8" sections of breccia.
74.3	82.0	Pale green cherty, highly siliceous, coarse fragmental - angular inclusions grading gradually to 82.0 where it is more massive, siliceous and black.
82.0	90.0	Massive black, siliceous rhyolite(?)
	90.0 -	End of hole.

W. P. Corking

Diamond Drill Log

Geologist

DDH No. 4

Property Jonsmith Gold Mines Ltd.

Date May 1947

Location No.1 Zone  
Trench #2

Bearing N52°E (M)

Dip -45°

Sample No.	DESCRIPTION	FOOTAGE	LENGTH Ft.	ASSAY Oz/Ton	VALUE \$/Ton
2749	Massive diorite, traces py	32.3-35.8	3.5	Nil	Nil
2993	Narrow breccia zone in diorite & 5% sulphides (py and a l chalco)	35.8-36.8	1.0	0.05	1.75
2750	Massive diorite, traces diss py	36.8-41.7	4.9	Nil	Nil
2751	Siliceous breccia, traces py	41.7-45.3	3.6	Nil	Nil
2752	Do. Includes 6" 40% quartz carbonate with a l chalco	45.3-46.6	1.3	Nil	Nil
2994	2-5% min. located in narrow breccia zones in diorite, mainly chalco and some py	46.6-49.1	2.5	0.24	8.40
2753	Diorite traces py	49.1-51.3	2.2	Tr	Tr
2754	Do. with 4" - 40% irregular quartz veining FMM py pyrhh, chalco	51.3-52.3	1.0	0.005	0.17
2755	Massive diorite traces py, pyrhh	52.3-53.6	1.3	Tr	Tr
2995	Massive diorite and a l chalco	53.6-55.2	1.6	0.005	0.17
2996	80% mineralization. Some py and chalco but mainly pyrhh-pentlandite (?)	55.2-56.0	0.8	0.04	1.40
2997	80% mineralization - loosely cemented (Fault?) Mainly py with chalco and pyrhh-pentlandite (?)	56.0-56.8	0.8	0.03	1.05
2998	80% massive mineralization. Some py chalco but mainly pyrhh-pentlandite (?)	56.8-58.5	1.7	0.48	16.80
2999	Massive diorite and a l chalco in stringers	58.5-60.5	2.0	0.005	0.17

A composite sample was weighed out, consisting of aliquot parts of samples 2994 to 2999 inclusive, in proportion to the core lengths which these samples represent. The composite sample was assayed with the following results:

Nickel	Copper	platinum	Palladium	Gold	} Core length 13.9 ft.
2.02%	1.56%	0.15 oz.	0.06 oz.	0.05 oz.	

## Diamond Drill Log

W. P. Corking

Property Jonsmith Gold Mines Ltd.

Geologist

Location No.1 Zone  
Trench #2

DDH No. 4

Date

Bearing

Dip -45°

Sample No.	DESCRIPTION	FOOTAGE	LENGTH Ft.	ASSAY Oz/Ton	VALUE \$/Ton
------------	-------------	---------	------------	--------------	--------------

GEOLOGY

0:0 - 4.0	- Casing				
4.0 - 6.0	- Casing core - return water lost				
6.0 - 15.7	- Limestone				
15.7 - 40.5	- Diorite intrusive (pink Feldspar) - 4" breccia at the limestone contact. 35.8 - 36.8 - mineralized breccia 37.4-38.4 - mineralized breccia				
40.5 - 46.5	- Contact at 20° and slicken sided. Dark grey-green, highly brecciated, siliceous sediment (?). Very little mineralization.				
46.5 - 74.3	- Uniform green diorite without the pink feldspar i.e. similar to that in the first hole - possibly a flow. Some disseminated mineralization. 55.3 - 58.5 - massive ore mineralization after which, some 6-8" sections of breccia.				
74.3 - 82.0	- rare green cherty, highly siliceous, coarse fragmental - angular inclusions grading gradually to 82.0 where it is more massive, siliceous and black.				
82.0 - 90.0	o massive black, siliceous rhyolite (?)				
90.0	- End of Hole.				



## GEOLOGIST

## DIAMOND DRILL LOG

PROPERTY - Jonsmith Gold Mines Ltd.,

LOCATION No. 1 Zone  
Trench #2

DDH NO. 5

DATE May 1947

BEARING N 52°E (M)

DIP - 45°

GEOLOGY

0.0	10.0	Casing
10.0	12.0	Casing core -- return water lost
12.0	45.4	Limestone showing an abnormal degree of minor faulting and crenelation.
45.4	77.0	Siliceous breccia. Locally soft chloritic areas, possibly a brecciated phase of the chert
77.0	110.5	Hard cherty grey-black sediment(?)
	110.5	End of Hole.

Diamond Drill Log

W. P. Corking

Property Jonsmith Gold Mines Ltd.

Geologist

Location No.1 Zone  
Trench #2

DDH No. 5  
Date May 1947  
Bearing N52°E (M)  
Dip -45°

Sample No.	DESCRIPTION	FOOTAGE	LENGTH	ASSAY Oz/Ton	VALUE \$/Ton
39	8" limestone with siliceous breccia traces of py	44.5-48.2	3.7	Tr	Tr
40	Siliceous breccia, a l chalco py (Some inches of this ground)	48.2-54.2	6.0	Tr	Tr
41	Do. a l py (10" of this ground)	54.2-59.6	5.4	0.01	0.35
42	Do. py and chalco with 1", 8" carbonate	59.6-64.9	5.3	0.035	1.22
43	Do. a l carbonate and chalco	64.9-69.6	4.7	0.05	1.75
44	Do. a l py in blebs	69.6-72.3	2.7	Tr	Tr
45	Do. 1/2% py with 12" carbonate (limestone?)	72.3-77.3	5.0	Tr	Tr
-----					

GEOLOGY

- 0.0 - 10.0 - Casing
- 10.0 - 12.0 - Casing core - return water lost
- 12.0 - 45.4 - Limestone showing an abnormal degree of minor faulting and cementation.
- 45.4 - 77.0 - Siliceous breccia. Locally soft chloritic areas possibly a brecciated phase of the chert.
- 77.0 - 110.5 - Hard cherty grey-black sediment (?)
- 110.5 - end of hole.

GEOLOGIST

DIAMOND DRILL LOG

DDH No. 6

PROPERTY - Jonsmith Gold Mines Ltd.,

DATE

LOCATION No. 1 Zone

BEARING

Trench #2

DIP 45°

GEOLOGY

0.0	3.5	Casing
3.5	5.5	Casing core -- return water lost
5.5	9.0	Medium grey fine grained chert
9.0	58.9	Pink speckled diorite
		41.3 - 12" included chert
58.9	93.5	51.2 - 58.9 mineralized ore zone
		Siliceous breccia
93.5	116.3	70.0 - 83 - irregular mineralization
	116.3	Grey black cherty sediment(?)
		End of Hole.

## Diamond Drill Log

W. P. Corking

Geologist

Property Jonsmith Gold Mines Ltd.

DDH No. 6

Date May 1947

Bearing N52°E (M)

Dip -45°

Location No.1 Zone  
Trench #2

Sample NO.		FOOTAGE	LENGTH Ft.	ASSAY Oz/Ton	VALUE \$/Ton
2740	Diorite a little chalco in one 2" section	48.2-50.8	2.6	Nil	Nil
4	Diorite (?) (lighter grey than the min. diorite) 10-20% diss. min. (py, pyrrh-pent, chalco)	50.8-53.0	2.2	0.04	1.40
5	Do. 40% min. over $\frac{1}{2}$ the sample - includes also 2" quartz (min.) and scheelite	53.0-55.5	2.5	0.04	1.40
6	Do. (or fragmental) 40-50% min..	55.5-58.9	3.4	0.03	2.10
2741	Sil. breccia or fragmental VLM	58.9-62.2	3.3	Nil	Nil
7	Black breccia a little chalco and includes $\frac{1}{2}$ " calcite with a little py	62.2-63.9	1.7	0.01	0.35
8	Sil. breccia a little min. (chalco) includes 2" fairly massive	70.0-71.4	1.4	0.05	1.75
3000	VLM	71.4-72.2	0.8	Tr	Tr
9	Do. FVM	72.2-72.8	0.6	0.02	0.70
10	Massive sil. rock a little min.	72.8-75.3	2.5	Tr	Tr
11	Do. 5-10% mineralization	75.3-77.1	1.8	0.08	2.80
12	8" massive py	77.1-78.2	1.1	0.10	3.50
13	Chert VLM	78.2-79.4	1.2	0.01	0.35
14	Do. 40% min. chalco etc.	79.4-80.4	1.0	0.02	0.70
15	Do. a little mineralization	80.4-81.5	1.1	0.01	0.35
16	Light green sed. with 20% massive min. associated with 1" calcite	81.5-83.0	1.5	0.06	2.10
2743	Sericite schist and black chert VLM a little carbonatization	83.0-86.3	3.3	Nil	Nil

Diamond Drill Log

W. P. Corking

Geologist

Property Jonsmith Gold Mines Ltd.

DDH No. 6

Date

Bearing

Location No.1 Zone  
Trench #2

Dip -45°

A composite sample was weighed out, consisting of aliquot parts of samples 4 to 16 inclusive, in proportion to the core lengths which these samples represent. The composite sample was assayed with the following results:

Nickel	1.10%	}	Core length - 32.2'
Copper	1.06%		
Platinum	0.08 ounces per Ton		
Gold	0.01 ounces per Ton		

Note: Sample Nos. 2741 and 2742 were deleted from the composite in error and if considered to assay nil, the averages for this core length of 32.2' are as follows:

Nickel	0.78%
Copper	0.75%
Platinum	0.06 ounces per ton
Gold	0.01 ounces per ton

GEOLOGY

0.0 - 3.5 - Casing  
3.5 - 5.5 - Casing core -return water lost  
5.5 - 9.0 - medium grey fine grained chert  
9.0 - 58.9 - Pink speckled diorite  
41.3 - 12" included chert  
51.2 - 58.9 mineralized ore zone  
58.9 - 93.5 - Siliceous breccia  
70.0 - 83 - irregular mineralization  
93.5 - 116.3 - grey black cherty sediment (?)  
116.3 - End Of Hole.

W.P. CORKING

GEOLOGIST

DDH No. 7

DIAMOND DRILL LOG

PROPERTY -- Jonsmath Gold Mines Ltd.,

DATE

LOCATION No. 1 Zone  
Trench #3

BEARING

Dip -35°

GEOLOGY

0.0	4.3	Casing
4.3	6.3	Casing core -- return water lost.
6.3	23.5	Dark grey, even textured, siliceous rock locally with course enough grain to identify as diorite. Many tension fractures filled with minute carbonate veinlets. Also some course crystalline pyrite disseminated throughout.
23.5	45.5	lighter grey ropey textured siliceous rock. Possibly quartzite but more probably an intrusive either the same as above or another type. At 31.0 gradually becoming softer, light green altered (sericite schist) with considerable carbonatization and some carbonate and quartz veinlets (tension) a little pyrite.
45.5	69.0	Mostly vein quartz with some sericite schist inclusions, a little pyrite disseminated in the rock but very little mineralization in the quartz
69.0	74.0	Ground core
74.0	87.3	Limestone
87.3	91.0 -	Siliceous breccia. Includes 6" diorite
91.0	181.0	Fine grained, cherty, uniform, grey-black rhyolite or sediment. Developing broad bedding-like banding at 131 (locally)
181.0	213.8	Similar to above but softer and good bedding planes - i.e. siliceous greywacke
213.8	216.5	White quartzite. Fairly well mineralized disseminated pyrite
216.5	265.0	Dark to light grey, medium to fine-grained quartzite and siliceous greywacke
	265.0	End of Hole.

W.P. CORKING  
GEOLOGIST

DIAMOND DRILL LOG  
PROPERTY - JONSMITH GOLD MINES LTD.  
LOCATION - No.1 Zone, Trench 3

DDH No. 7  
Date May 1947  
Bearing North (M)  
Dip - 35°

Sample No.	Description	Footage	Length Ft.	Assay Oz/Ton	Value \$/Ton
18	Siliceous diorite with a l coarse diss py	9.2 - 13.4	4.2	0.005	0.17
19	do	13.4 - 17.3	3.9	0.005	0.17
20	Light grey siliceous intrusive a l diss py includes 4" irregular quartz with py and a l carbonate	24.9 - 26.7	1.8	0.005	0.17
21	Grey siliceous intrusive traces quartz, carbonate and py	26.7 - 30.5	3.8	0.005	0.17
22	do, becoming lighter (sericite) FWM py	30.5 - 35.5	5.0	tr.	tr.
23	do. includes 3" quartz-carbonate (irregular)	35.5 - 37.2	1.7	0.005	0.17
24	do. includes 2" quartz	37.2 - 38.5	1.3	tr.	tr.
25	Sericite schist and a l quartz-carbonate and py	38.5 - 40.8	2.3	0.005	0.17
26	do. includes 2" quartz-carbonate	40.8 - 41.5	0.7	tr.	tr.
27	Sericite schist	41.5 - 43.1	1.6	0.005	0.17
28	do. includes 7" quartz a l carbonate a l py	43.1 - 45.1	2.0	0.01	0.35
29	70% quartz-carbonate, traces py	45.1 - 48.2	3.1	tr	tr
30	50% quartz-carbonate in sericite schist VLM	48.2 - 51.0	2.8	0.005	0.17
31	60% quartz-carbonate, traces py	51.0 - 54.7	3.7	0.005	0.17
32	90% quartz-carbonate, traces py (?)	54.7 - 56.8	2.1	tr	tr
33	50% quartz-carbonate incl. sericite schist wity chrome stain brown rust a l py	56.8 - 58.4	1.6	0.005	0.17

Sample No.	Description	Footage	Length Ft.	Assay Oz/Ton	Value \$/Ton
34	60% quartz-carbonate incl. sericite schist with chrome stain brown rust a l. py.	58.4 - 60.5	2.1	0.005	0.17
35	Quartz-white VLM	60.5 - 63.7	3.2	tr	tr
36	Quartz-white VLM	63.7 - 66.0	2.3	tr	tr
37	60% quartz-carbonate and some limestone VLM	66.0 - 69.0	3.0	0.005	0.17
38	Ground Core 1" limestone before the block	69.0 - 74.0	5.0		
46	Quartzite-white FWM diss py	213.8 - 216.5	2.7	tr	tr

## GEOLOGY

0.0 - 4.3	Casing
4.3 - 6.3	Casing core- return water lost
6.3 - 23.5	Dark grey, even textured, siliceous rock locally with coarse enough grain to identify as diorite. Many tension fractures filled with minute carbonate veinlets. Also some coarse crystalline pyrite disseminated throughout
23.5 - 45.5	Lighter grey ropey textured siliceous rock. Possibly quartzite but more probably an intrusive either the same as above or another type. At 31.0 gradually becoming softer, light green altered (sericite schist) with considerable carbonatization and some carbonate and quartz veinlets (tension) a little pyrite
45.5 - 69.0	Mostly vein quartz with some sericite schist inclusions, a little pyrite disseminated in the rock but very little mineralization in the quartz
69.0 - 74.0	Ground core
74.0 - 87.3	Limestone
87.3 - 91.0	Siliceous breccia, Includes 6" diorite
91.0 - 181.0	Fine-grained, cherty, uniform, grey-black rhyolite or sediment. Developing broad bedding-like banding at 131 (locally)
181.0 - 213.8	Similar to above but softer and good bedding planes- i.e. siliceous greywacke
213.8 - 216.5	White quartzite. Fairly well mineralized disseminated pyrite
216.5 - 265.0	Dark to light grey, medium to fine-grained quartzite and siliceous greywacke
265.0	End of hole



W. P. CORKING

GEOLOGIST

AMCND DRILL LOG

PROPERTY / Jonsmith Gold Mines Ltd.,

LOCATION No. 1 Zone  
Trench #3.

DDH No. 8

DATE May 1947

BEARING North "M"

DIP - 35°

GEOLOGY

0.0	8.0
8.0	9.5
9.5	21.6
21.6	40.5
	40.5

Casing  
 Casing core-- return water lost  
 Ropy grey siliceous rock as in 7 at 23 to 45.  
 Looks like a rhyolite flow becoming sericitized at 18,  
 with carbonate. Quartz stringers with carbonate in this  
 altered zone.  
 Limestone, many solution cavities with alteration at  
 contact zone and rusty seams.  
 End of Hole.

W. P. CORKING  
GEOLOGIST

DIAMOND DRILL LOG

PROPERTY - JONSMITH GOLD MINES LTD.  
LOCATION - No.1 Zone Trench No.3

DDH No. 8  
DATE May 1947  
BEARING North (M)  
DIP -35°

Sample No	Description	Footage	Length Ft.	Assay Oz/Ton	Value \$/Ton
47	Siliceous grey ropey rhy(?) a l quartz carbonate and blebby py	9.5 - 13.5	4.0	0.005	0.17
48	do. Becoming sericitized	13.5 - 17.8	4.3	0.005	0.17
49	4" quartz carbonate in sericite schist. VLM	17.8 - 18.5	0.7	0.005	0.17
50	Sericite schist with rusty seams traces py	18.5 - 21.0	2.5	tr	tr
67	Sericite schist and limestone 2", 6", $\frac{1}{2}$ ", $\frac{1}{2}$ ", 1", $\frac{1}{2}$ " quartz carbonate Rusty but VLM	21.0 - 24.2	3.2	tr	tr
68	Rusty, rotten limestone schist VLM	24.2 - 26.5	2.3	tr	tr
69	Rusty, rotten limestone with solution cavities a l quartz VLM	26.5 - 32.3	5.8	tr	tr

GEOLOGY

0.0 - 8.0 Casing  
 8.0 - 9.5 Casing core- return water lost  
 9.5 - 21.6 Ropy grey siliceous rock as in 7 at 23 to 45- Looks like a rhyolite flow becoming sericitized at 18, with carbonate. Quartz stringers with carbonate in this altered zone.  
 21.6 - 40.5 Limestone, many solution cavities with alteration at contact zone and rusty seams  
 40.5 End of hole

W.P. CORKING

GEOLOGIST

DIAMOND DRILL LOG

DDH No. 9

PROPERTY - Jonsmith Gold Mines Ltd.,

DATE

LOCATION NO. 2 Zone

BEARING

DIP +45°

GEOLOGY

0.0	4.0	Casing
4.0	7.0	Overburden
7.0	9.0	Casing core -- return water lost
9.0	83.0	Limestone. Occasional disseminated pyrite
		71.0 - 83.0 "Shear" with basic bands sericitized - not much quartz.
83.0	84.5	Contact zone - soft carbonatized breccia - very highly altered. Some quartz.
84.5	101.3	Very highly siliceous breccia with some sericita zoning
		Fairly well mineralized pyrite and some quartz
101.3	119.0	Green impure quartzite - probably the source of the breccia.
		Some quartz and a little pyrite.
	119.0	End of Hole.

W. P. CORKING  
GEOLOGIST

DIAMOND DRILL LOG

PROPERTY - JONSMITH GOLD MINES LTD.  
LOCATION - No.2 Zone

DDH No. 9  
DATE June 1947  
BEARING S5°W(M)  
DIP 45°

CL 39838

Sample No	Description	Footage	Length Ft.	Assay Oz/Ton Au	Value \$/Ton
51	Limestone near contact zone. Some uniformly diss py	67.0 - 69.5	2.5	tr	tr
52	do Sericitized	69.5 - 72.5	3.0	tr	tr
53	do do	72.5 - 76.2	3.7	tr	tr
54	do do Includes 2 x 1/2" quartz	76.2 - 79.8	3.6	tr	tr
55	do do do Includes 30% quartz (still some fine diss py and a l chalco)	79.8 - 81.9	2.1	tr	tr
56	do. At contact includes 30% quartz with diss py includes one seam of coarse py, some of which is fractured and contains a minute blue metallic	81.9 - 84.8	2.9	0.075	2.62
57	Siliceous breccia with a few quartz threads. Diss py	84.8 - 87.6	2.8	tr	tr
58	do No veinlets	87.6 - 91.1	3.5	tr	tr
59	do Includes 1/2", 8", 1" quartz and carbonate veins	91.1 - 93.7	2.6	tr	tr
60	do Includes 2 x 1/2" quartz	93.7 - 96.4	2.7	tr	tr
61	do Includes 1", 3", 1", 1" quartz (carbonate) mineralization also incl. some chalco and sphalerite (?)	96.4 - 99.5	3.1	0.035	1.22
62	do No quartz	99.5 - 101.1	1.6	tr	tr
63	do Includes 3" quartz (carbonate)	101.1 - 102.0	0.9	0.01	0.35
64	Green massive quartzite, a l py-very fine	102.0 - 105.0	3.0	0.01	0.35
65	10" quartz in pyritized quartzite	105.0 - 106.3	1.3	tr	tr
66	Green quartzite-massive FWM fine py a few quartz and carbonate threads	106.3 - 109.0	2.7	tr	tr

Sample No	Description	Footage	Length Ft.	Assay Oz/ton	Value \$/Ton
-----------	-------------	---------	------------	--------------	--------------

GEOLOGY

0.0 - 4.0	Casing				
4.0 - 7.0	Overburden				
7.0 - 9.0	Casing core- return water lost				
9.0 - 83.0	Limestone. Occasional disseminated pyrite 71.0 - 83.0 "Shear" with basic bands sericitized - not much quartz				
83.0 - 84.5	Contact zone-soft carbonatized breccia- very highly altered. Some quartz				
84.0 - 101.3	Very highly siliceous breccia with some sericite zoning				
101.3- 119.0	Fairly well mineralized pyrite and some quartz				
	Green impure quartzite - probably the source of the breccia. Some quartz and a little pyrite				
119.0	End of hole				

W.P. CORKING  
GEOLOGIST

DIAMOND DRILL LOG

DDH NO 10

PROPERTY - Jonsmith Gold Mines Ltd.,

DATE

LOCATION No. 2 Zone

BEARING

DIP 45°

GEOLOGY

0.0	4.0	Casing
4.0	6.5	Overburden
6.5	8.5	Casing core
8.0	71.6	Well bedded limestone with traces disseminated pyrite Basic beds are sericitized from 40.0 44.5 - 46.9 --50% smokey quartz. Poorly mineralized and no carbonate
71.6	120.5	62.0 - 65.0 --Quartz zone with galena sphalerite. Siliceous breccia including some limestone fragments. Considerable quantities of stringer quartz with carbonate selvages and fairly well mineralized with finely disseminate pyrite.
120.5	137.0	95.8 - 104.8 -- dark, grey-green, fine grained dike with 10% breccia inclusions. Dark grey, fine grained, bedded impure quartzite. Fairly well mineralized with finely disseminated pyrite.
137.0	154.7	Pink and green variegated quartzite, becoming more massive and green at 149.0. A few quartz and quz-carb stringers. F Fairly well mineralized as above.
	154.7	End of Hole.

W.P. CORKING  
GEOLOGIST

DIAMOND DRILL LOG  
PROPERTY - JONSMITH GOLD MINES LTD.  
LOCATION - No. 2 Zone

DDH No. 10  
DATE - June 1947  
BEARING - S 5° W (M)  
DIP - 45°

Sample No.	DESCRIPTION	FOOTAGE	LENGTH Ft.	ASSAY Oz/Ton	VALUE \$/To
70	Limestone traces diss py, basic beds sericitized	41.1 - 44.5	3.4	nil	nil
71	30% smokey quartz in 3 veins VLM but a 1 diss py and galena in limestone and quartz	44.5 - 46.9	2.4	nil	nil
72	Sericitized-limestone schist, traces diss py	46.9 - 49.7	2.8	nil	nil
73	Sericitized-limestone, a 1 py	58.5 - 62.0	3.5	nil	nil
74	60% vein quartz very heavily min.- coarse galena, sphalerite with chalco and py	62.0 - 64.7	2.7 Silver	0.10 2.30	3.50
75	Sericitized-limestone and a few quartz threads and FWM diss py	64.7 - 67.2	2.5	tr	tr
76	do. with 2 x 1" quartz and other stringers a 1 diss py	67.2 - 71.1	3.9	tr	tr
77	Siliceous breccia, A 1 stringer quartz FWM diss py with traces sphalerite, pyrhh chalco	71.1 - 74.2	3.1	nil	nil
78	Sil. breccia with 1/2" quartz FWM fine diss py	74.2 - 78.5	4.3	nil	nil
79	Sil. breccia FWM py with 2", 1/2" quartz with carbonate selvages	78.5 - 81.7	3.2	tr	tr
81	Sil. breccia, a 1 quartz-carbonate FWM diss py and traces galena and sphalerite	81.7 - 84.5	2.8	tr	tr
80	Do. FWM, a 1 quartz	84.5 - 87.9	3.4	tr	tr
82	do. incl. 1" quartz FWM py	87.9 - 90.2	2.3	tr	tr
83	do. incl. 3/4" quartz-carbonate FWM py	90.2 - 92.7	2.5	0.005	0.17

Sample No	Description	Footage	Length Ft.	Assay Oz/ton	Value \$/Ton	
84	Sil. breccia 3" quartz-carbonate FWM py	92.7-	95.1	2.4	tr	tr
85	Dark grey-green fine grained dyke FWM diss py	95.1-	97.8	2.7	0.005	0.17
86	Mostly included breccia in the mineralized dike	97.8-	101.2	3.2	0.005	0.17
87	Fine grained dike- FWM py	101.0-	104.7	3.7	tr	tr
88	Sil Breccia FWM py; 1", $\frac{1}{8}$ " Qtz-carb	104.7-	106.8	2.1	tr	tr
89	Sil Breccia FWM py	106.8-	111.5	4.7	nil	nil
90	do	111.5-	116.3	4.8	nil	nil
91	do	116.3-	121.0	4.7	nil	nil
92	Dark grey impure quartzite FWM py	121.0-	126.0	5.0	nil	nil
93	do do	126.0-	130.9	4.9	tr	tr
94	Green quartzite. 20% qtz str up to 2". A little fine py in walls	114.7-	146.9	2.2	nil	nil
95	do. A 1 qtz veining and traces fine py.	146.9-	149.3	2.4	nil	nil
96	do. 2" qtz min as above. Some jasper	149.3-	151.3	2.0	tr	tr

## GEOLOGY

0.0 - 4.0	Casing
4.0 - 6.5	Overburden
6.5 - 8.5	Casing core
8.0 - 71.6	Well bedded limestone with traces disseminated pyrite Basic beds are sericitized fro 40.0 44.5 - 46.9 --50% smokey quartz Poorly mineralized and no carbonate 62.0-65.0--quartz zone with galena, sphalerite.
71.6 - 120.5	Siliceous breccia including some limestone fragments, Considerable quantities of stringer quartz with carbonate selvages and fairly well mineralized with finely disseminated pyrite 95.8-104.8--dark grey-green, fine-grained dike with 10% breccia inclusions
120.5 - 137.0	Dark grey, fine grained, bedded impure quartzite. Fairly well mineralized with finely disseminated pyrite
137.0 - 154.7	Pink and green variegated quartzite, becoming more massive and green at 149.0. A few quartz and qtz-carb stringers. Fairly well mineralized as above.
154.7	End of hole



DIAMOND DRILL LOG

GEOLOGIST

DDH No. 11

PROPERTY - Jonsmith Gol'

s Lbd.,

DATE

LOCATION

BEARING

DIP

GEOLOGY

0.0	3.0	Casing
3.0	5.0	Overburden
5.0	7.0	Casing core
7.0	86.5	Limestone

17.0 - Cave or seam 4.5'

28.0 - 67.0 Sericitization of basic beds. First ten feet well mineralized with very fine pyrite.

67.0 - 86.5 --Highly sericitized limestone schist with a little quartz veining.

86.5 - 105.0 Siliceous breccia

105.0-145.0 --fine grained, massive, olive green semi-siliceous rock. Local feint banding which may be bedding at 136.0

126.0-145.0 -- Banding at 20° to the core and against 45° near the top. Here the rock appears to be a siliceous greywacke.

137.0 --2" dark dike

145.0 - 164.7 --Pink and green siliceous quartzite. Well mineralized with fine disseminated pyrite. Locally brecciated.

164.7 - End of Holes.

W.P. CORKING  
GEOLOGIST

DIAMOND DRILL LOG  
PROPERTY - JONSMITH GOLD MINES LTD.  
LOCATION - No.2 Zone

DDH No. 11  
DATE- June 1947  
BEARING- S 5° W (M)  
DIP - 45°

Sample No.	DESCRIPTION	FOOTAGE	LENGTH Ft.	ASSAY (Au)	VALUE
2701	Ser. limestone. FWM very fine diss py	33.5- 38.0	4.5	nil	nil
2702	do Schisted. FWM fine diss py	66.40-69.6	3.2	nil	nil
2703	do Including 10% dk grey vein carb	69.6- 70.7	1.1	nil	nil
2704	do No stringers	70.7- 74.5	3.8	nil	nil
2705	do	74.5- 78.8	4.3	nil	nil
2706	do. A little qtz. carb with py, becoming coarser and possibly some fine arsenopyrite	78.8- 81.0	2.2	nil	nil
2707	do. 10" quartz with 2-5% coarse py; fine cubes and sub-needles of arsenopyrite; chalco; galena and pyrrhotite	81.0- 83.0	2.0	0.15	5.25
2708	Grey schisted limestone. A 1 diss py	83.0- 85.3	2.3	tr	tr
2709	Ser schisted ls. A few white qtz strs to 1" and a 1 fine diss py	85.3- 88.0	2.7	tr	tr
2710	Siliceous sericitic breccia FWM py	88.0- 91.5	3.5	tr	tr
2711	do do	91.5- 93.9	2.4	tr	tr
2712	Massive olive green rock FWM diss py some of which is coarse	106.8-109.0	2.2	tr	tr
2713	do. 30% qtz and grey carb FWM fine py	109.0-111.2	2.2	0.03	1.05
2714	do but no quartz FWM pyrite	111.2-113.1	1.9	nil	nil
2715	do 2" qtz-carb and other small veining	113.1-116.1	3.0	0.03	1.05
2716	do do Incl 2", 6", 2" qtz-carb	116.1-119.2	3.1	tr	tr
2717	do Incl 1/2", 1/2" qtz-carb	119.2-121.4	2.2	nil	nil

Sample No.	Description	Footage	Length	Assay	
				(Au)	Value
2718	Massive olive green rock. Incl. 2", 1", 2" qtz-carb with coarse py, chalc and pyrrhotite	121.4-123.2	1.8	tr	tr
2719	do Incl 2" qtz-carb; a 1 pyrrh	123.2-125.1	1.9	nil	nil
2720	do. No str.	125.1-127.9	2.8	tr	tr
2721	do. Incl 2" qtz and other fine veining	127.9-130.3	2.4	0.02	0.70
2722	Sil breccia FWM py	158.0-162.8	4.8	nil	nil
2723	do. 1" qtz	162.8-164.7	1.9	nil	nil

GEOLOGY

0.0 - 3.0	Casing
3.0 - 5.0	Overburden
5.0 - 7.0	Casing core
7.0 - 86.5	Limestone
17.0	Cave or seam 4.5'
28.0-67.0	Sericitization of basic beds. First ten feet well mineralized with very fine pyrite
67.0-86.5	Highly sericitized limestone schist with a little quartz veining
86.5 - 105.0	Siliceous breccia
105.0 - 145.0	Fine-grained, massive, olive green semi-siliceous rock. Local feint banding which may be bedding at 136.0
126.0-145.0	Banding at 20° to the core as against 45° near the top. Here the rock appears to be a siliceous greywacke.
137.0	2" dark dike
145.0 - 164.7	Pink and green siliceous quartzite. Well mineralized with fine disseminated pyrite. Locally brecciated
164.7	End of hole

W.P. CORKING

GEOLOGIST

DIAMOND DRILL LOG

DDH NO. 12

PROPERTY - Jonsmith Gold Mines Ltd.,

DATE June 1947

LOCATION - Zone No. 2

DIP -4 5°

BEARING S 50° W (M)

GEOLOGY

0.0	4.0	Casing
4.0	7.0	Overburden
7.0	9.0	Casing core
9.0	92.3	Limestone
		58.0 - 78.8 sheared and sericitized
		78.8 - barren quartz 1.5'
		78.8 - 92.3 -- Massive but ropey texture and no bedding.
92.3	100.3	Siliceous breccia
100.3	110.0	Limestone. 18" ground at upper contact
110.0	119.0	Siliceous breccia
119.0	132.0	Dark olive green graywacke alternating with siliceous breccia or conglomerate
132.0	145.0	Siliceous breccia or conglomerate
	145.0	End of Hole.

W.P.CORKING  
GEOLOGIST

DIAMOND DRILL LOG

PROPERTY - Jonsmith Gold Mines Ltd.  
LOCATION - Zone No.2

DDH No. 12  
DATE- June 1947  
BEARING- S 5° W (M)  
DIP-45°

Sample No.	Description	Footage	Length	Assay Value
2724	Ser limestone schist FWM diss py and a l pyrrh	63.3- 67.0	3.7	nil nil
2725	do. $\frac{1}{8}$ " qtz. Min solely py except $\frac{1}{32}$ " galena	67.0 - 72.0	5.0	nil nil
2726	do. No galena	72.0 - 76.9	4.9	nil nil
2727	do. $\frac{1}{2}$ ", $\frac{1}{2}$ " qtz	76.9 - 78.8	1.9	nil nil
2728	60% white vein quartz Almost barren of min but fine py, a little chalco and galena in walls	78.8 - 80.5	1.7	nil nil
2729	Massive ls(?) A few narrow qtz threads FWM fine pyrite and a l pyrrh	80.5 - 83.7	3.2	nil nil
2730	do do Some of the diss py fairly coarse	83.7 - 86.1	2.4	nil nil
2731	do A few qtz str to $\frac{1}{2}$ " wall FWM fine py	86.1 - 89.0	2.9	nil nil
2732	do No strs FWM fine py	89.0 - 92.3	3.3	nil nil
2733	Impure quartzite locally brecciated FWM py	92.3 - 94.1	1.8	nil nil
2734	Sil breccia. A l qtz FWM fine py	94.1 - 97.1	3.0	nil nil
2735	Impure qtzite and sil br. FWM fine py	97.1 - 100.3	3.2	tr tr
2736	Limestone 1" qtz VLM	100.3- 102.5	2.2	nil nil
2737	do. Incl $\frac{1}{2}$ " rusty seam VLM	102.5- 104.2	1.7	nil nil
2738	Impure qtzite(?) Some strs. FWM py	122.1- 125.0	2.9	nil nil
2739	do. A little qtz. FWM py	125.0- 130.3	5.3	nil nil

GEOLOGY

0.0- 4.0 Casing  
 4.0- 7.0 Overburden  
 7.0- 9.0 Casing core  
 9.0- 92.3 Limestone  
 58.0-78.8 sheared and sericitized  
 78.8 barren quartz 1.5'  
 78.8-92.3 Massive but ropey texture and no bedding

GEOLOGY

92.3 - 100.3	Siliceous breccia
100.3 - 110.0	Limestone 18" ground at upper contact
110.0 - 119.0	Siliceous breccia
119.0 - 132.0	Dark olive green greywacke alternating with siliceous breccia or conglomerate
132.0 - 145.0	Siliceous breccia or conglomerate
145.0	End of hole

W.P. CORKING

GEOLOGIST

Diamond Drill Log

DDHNo. 13

PROPERTY - Jonsmith Gold Mines Ltd.,

DATE June 1947

LOCATION No. 2 Zone

BEARING N 50° E(M)

DIP      ↘45°

GEOLOGY

0.0	8.0	Casing
8.0	10.0	Casing core
10.0	183.5	Limestone
183.5	215.5	Siliceous greywacke, or possible a dioritic intrusive
	215.5	End of Hole.

W.P.CORKING  
GEOLOGIST

DIAMOND DRILL LOG

PROPERTY - Jonsmith Gold Mines Ltd.  
LOCATION - Zone No.2

DDH No. 13  
DATE- June 1947  
BEARING- N 5° E (M)  
DIP-45°

NO SAMPLES ASSAYED IN THIS HOLE

Geology

0.0 - 8.0	Casing
8.0 - 10.0	Casing core
10.0 - 183.5	Limestone
183.5 - 215.5	Siliceous greywacke, or possibly a dioritic intrusive
215.5	End of hole