

2,3529



1116SW0155 0016A1 HUTTON

010

**RECEIVED**

N.T.S. 41 I/15

NOV - 5 1980

MINING LANDS SECTION

WORK REPORT ON CLAIMS S.539368, S.544298-99-300-301

FOR THE PERIOD OCTOBER 11, 1979 - OCTOBER 11, 1980

KERR ADDISON MINES LIMITED

Vermillion River Property  
Hutton Township  
Sudbury District, Ontario

October 24, 1980

D. W. Constable.

*on this  
file*

## INTRODUCTION

Claims S.539368, S.544298-99-300-301 were optioned from the original staker, Sonia Rex, on October 11, 1980. They were originally staked on December 1, 1978. The five claims comprise part of a larger block of claims staked or optioned by Kerr Addison Mines Limited in order to assess the placer gold potential of the Vermillion River gravels. This area has long been known to contain gold bearing gravels and sands.

This portion of the work program consisted of linecutting and ground magnetometry coverage. This was an attempt to trace any heavy metal concentrations at the base, or within the gravels. The idea being that these heavy metal concentrations would also likely contain above average gold concentrations. This program was completed in conjunction with a series of seismic profiles to determine depth to bedrock and gravel profiles.

## LINECUTTING

This program consisted of compass and flagging of stations rather than transit and cutting, thus, control on this survey was inferior to most surveys. Lines were 100 meters apart and station were 15 meters.

## GROUND MAGNETOMETRY

The instrument used was an Exploranium Model G-836 Proton Precession magnetometer. This instrument is accurate to  $\pm 10$  gammas and has a digital readout display.

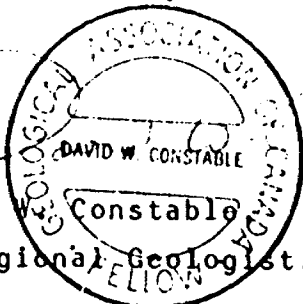
GROUND MAGNETOMETRY (cont'd)

The instrument measures total field intensity. The data was corrected for day-to-day and diurnal variations and plotted on maps of 1:3000 scale. The data was then contoured at 250 gamma intervals.

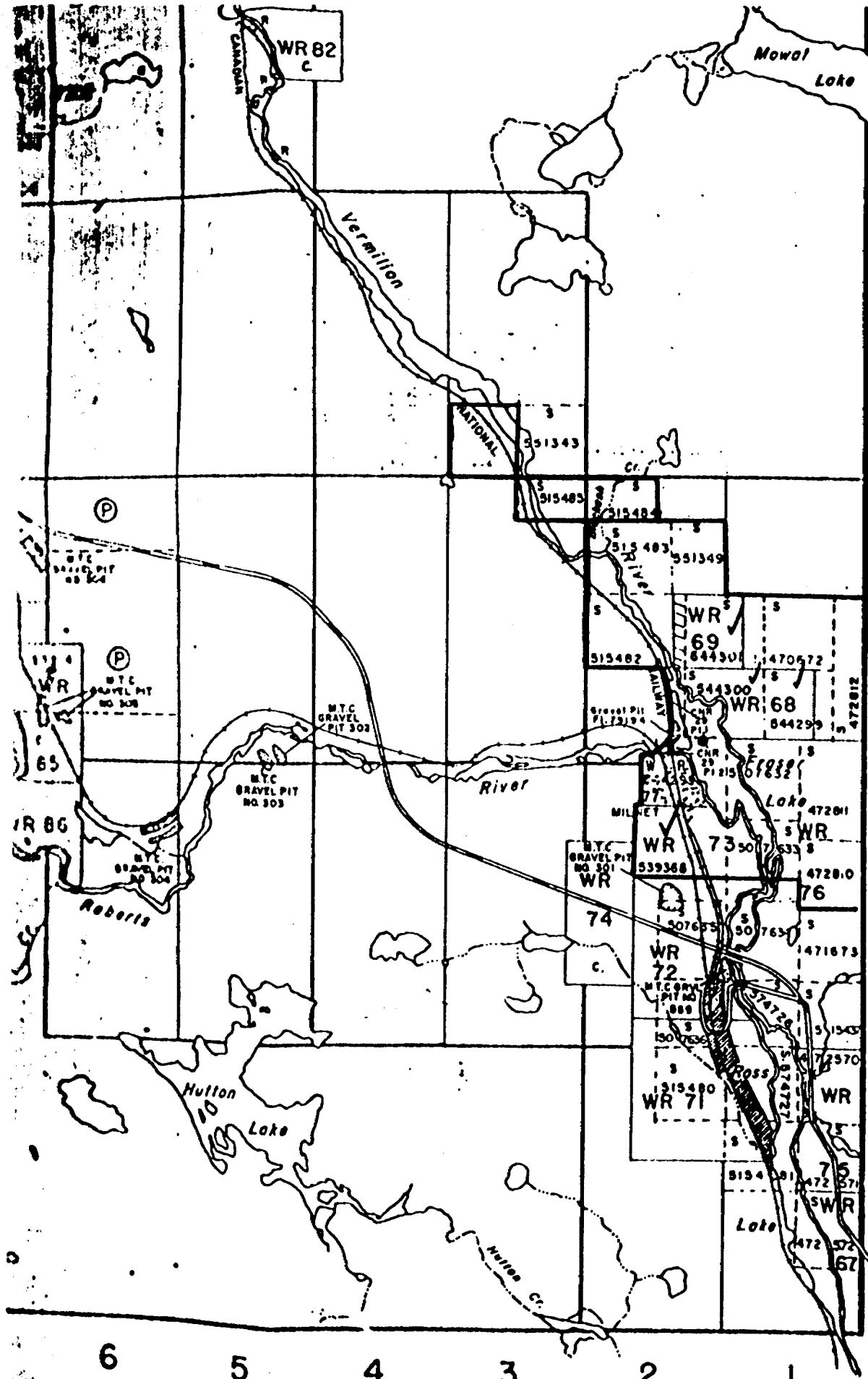
RESULTS AND DISCUSSION

The resultant map shows a series of magnetic highs running roughly parallel to the present day river valley. The anomalies are of the order of 200 to 8000 gammas above background. The results must now be combined with the seismic data and "trough" areas of high magnetic response drilled by reverse circulation drill to sample the best areas at depth. A drill program is planned later this fall.

Respectfully submitted,

 *ms 100*  
D. W. Constable  
Regional Geologist.

DWC:lg



PARKIN TWP. M.1049

Hutton  
Twp.

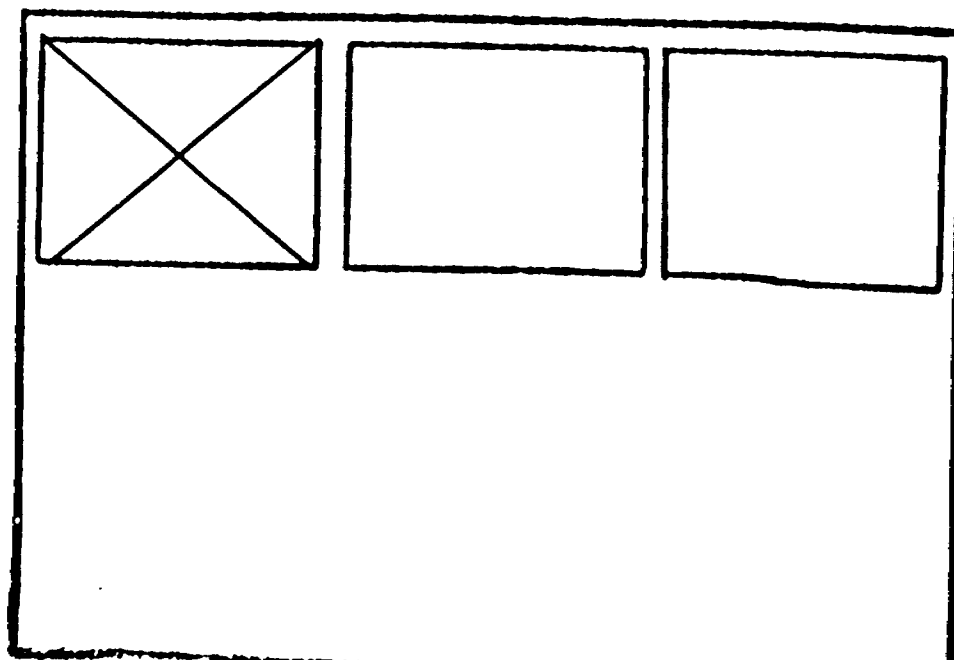
ER TWP. M.1185

Have addition M.R.  
Oct. 24/80 -  
G.P. - R.M. + mea survey record

SEE ACCOMPANYING  
MAP(S) IDENTIFIED AS

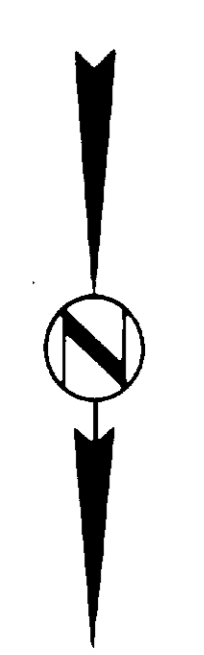
HUTTON-0016-A1, #1

LOCATED IN THE MAP  
CHANNEL IN THE FOLLOWING  
SEQUENCE (X)

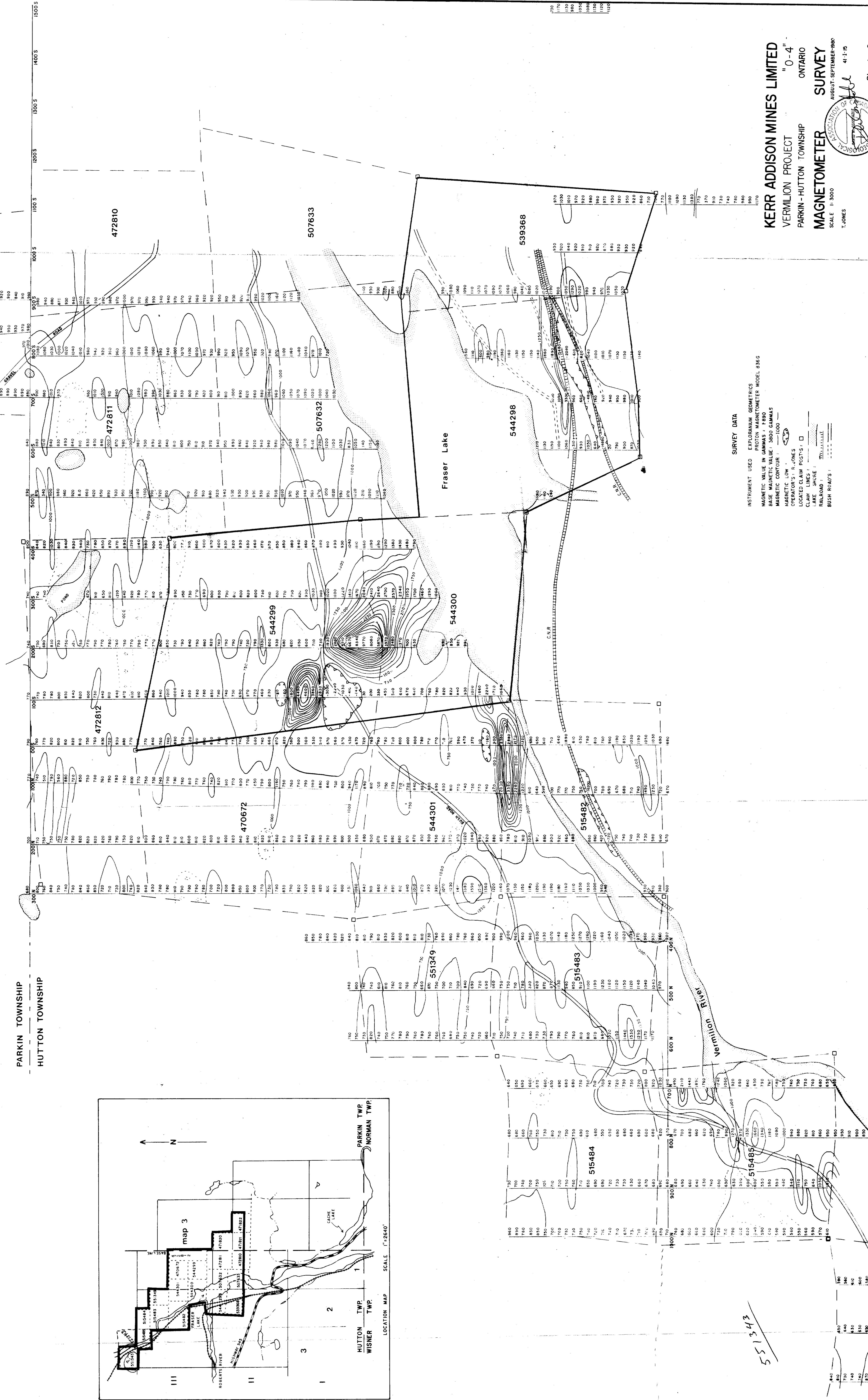
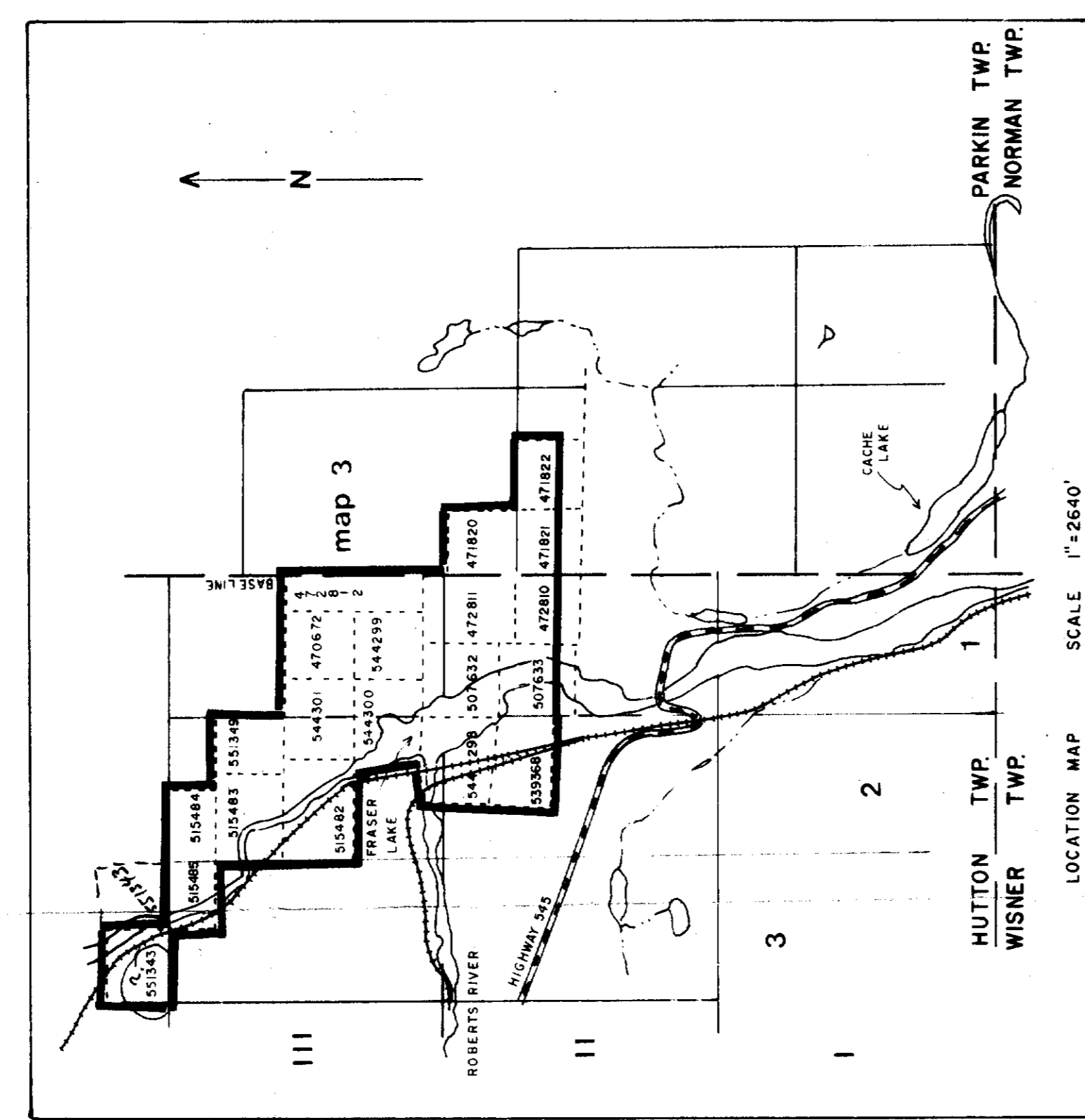


2.3.523

4200- 3900- 3600- 3300- 3000- 2700- 2400- 2100- 1800- 1500- 1200- 900- 600- 300- BASE LINE- 30'W- 60'W- 90'W- 120'W- 150'W- 180'W- 210'W- 240'W- 270'W- 300'W- 330'W- 360'W- 390'W- 420'W- 450'W- 480'W- 510'W- 540'W- 570'W- 600'W- 630'W- 660'W- 690'W- 720'W- 750'W- 780'W- 810'W- 840'W- 870'W- 900'W- 930'W- 960'W- 990'W- 1020'W- 1050'W- 1080'W- 1110'W- 1140'W- 1170'W- 1200'W- 1230'W- 1260'W- 1290'W- 1320'W- 1350'W- 1380'W- 1410'W- 1440'W- 1470'W- 1500'W- 1530'W- 1560'W- 1590'W- 1620'W- 1650'W- 1680'W- 1710'W- 1740'W- 1770'W- 1800'W- 1830'W- 1860'W- 1890'W- 1920'W- 1950'W- 1980'W- 2010'W- 2040'W-



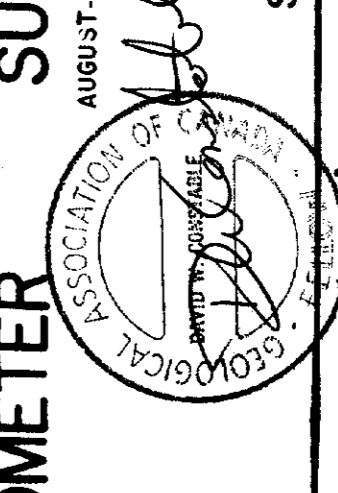
PARKIN TOWNSHIP  
HUTTON TOWNSHIP



**SURVEY DATA**

INSTRUMENT USED: EXPLORANUM GEOMETRICS  
 MAGNETIC VALUE IN GAMMAS: 1880  
 BASE MAGNETIC VALUE: 3800 GAMMAS  
 MAGNETIC CONTOUR: 1000  
 MAGNETIC LOW:   
 LOCATED CLAIM POINT:   
 CLAIM LINES:   
 LAKE SHORE:   
 RAILROAD:   
 BUSH ROADS:

**KERR ADDISON MINES LIMITED**  
 VERMILION PROJECT  
 PARKIN-HUTTON TOWNSHIP  
 MAGNETOMETER SURVEY  
 SCALE 1:3000  
 T.JONES  
 AUGUST-SEPTEMBER-98  
 41-1-76



Sheet 3

Hutton-0016-A1#1 2.3.523



2000

2040W