

NORMAN-0012-D1

Load: 16 mm

DD-15

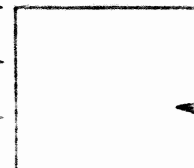
DIAMOND DRILL RECORD

LOGGED BY J. B. Kirk

PROPERTY Skyner Lake - Cleveland Copper Corporation

D.D.H. No. 1 PAGE _____

TITUDE _____ BEARING OF HOLE East (Ast) STARTED Oct. 8/56
 PARTURE _____ DIP OF HOLE _____ COMPLETED Oct. 22/56
 ELEVATION _____ DIP TESTS _____ DEPTH 992



CLAIM No. _____
 DIRECTION AND DISTANCE FROM
 NE. CLAIM POST

| FOOTAGE | | DESCRIPTION | SAMPLE No. | FOOTAGE | | SAMPLE LENGTH | ASSAY | | | | |
|---------|-------|--|------------|---------|----|---------------|-------|--------|--------|--------|------|
| FROM | TO | | | FROM | TO | | Gold | Silver | Copper | Nickel | |
| 0 | 4 | Casing | | | | | | | | | |
| 4 | 132 | Pink granite, some greenstone inclusions. | | | | | | | | | |
| 132 | 137 | Greenstone | | | | | | | | | |
| 137 | 150 | Pink granite | | | | | | | | | |
| 150 | 188 | Granitized greenstone 156.8-157.6 brecciated with blebs of magnetite | | | | | | | | | |
| 188 | 195 | Pink granite | | | | | | | | | |
| 195 | 451.5 | Granitized greenstone. 260-265 no core, 332-333 small streaks of sulphides 372.5-374 specks of sulphides. | | | | | | | | | |
| 451 | 485.5 | Quartz diorite, 417-418 Pegmatite with blebs of magnetite. 422-426 gabbro with finely disseminated sulphides. 437.5-450 Pegmatite with scattered bl-bs of magnetite. 457.5-459 gabbro with very fine sulphides. Samples taken at : 470-475 (N 351) 483.5-485.5 (N 352) | | | | | | Trace | Nil | 0.06 | 0.02 |
| 485 | 552 | Granitized greenstone | | | / | | | Trace | Nil | 0.09 | 0.02 |
| 552 | 577 | Pink granite, Some pegmatitic phases. | | | | | | | | | |
| 577 | 579 | Jasperoid. | | | | | | | | | |
| 579 | 760 | Pink granite, some pegmatitic phases. | | | | | | | | | |
| 760 | 763 | Greenstone | | | | | | | | | |
| 763 | 789 | Jasperoid | | | | | | | | | |
| 789 | 896 | Pink granite, some pegmatitic phases. | | | | | | | | | |
| 896 | 992 | Granitized Greenstone. | | | | | | | | | |

HOLE FINISHED.

**DUPLICATE COPY
 POOR QUALITY ORIGINAL
 TO FOLLOW**

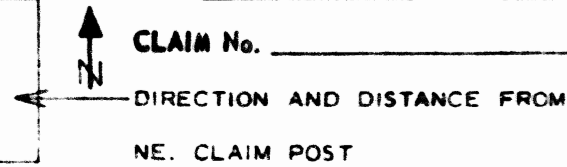
DIAMOND DRILL RECORD

LOGGED BY J. B. Kirk

PROPERTY Skyunner Lake - CLEVELAND COPPER CORPORATION

D.D.H. No. 2 PAGE 1

LATITUDE _____ BEARING OF HOLE East (AST) STARTED Oct. 24/56
 DEPARTURE _____ DIP OF HOLE 45° COMPLETED Nov. 5/56
 ELEVATION _____ DIP TESTS _____ DEPTH 811



| FOOTAGE | | DESCRIPTION | SAMPLE No. | FOOTAGE | | SAMPLE LENGTH | ASSAY |
|---------|-------|--|------------|---------|----|---------------|-------|
| FROM | TO | | | FROM | TO | | |
| 0 | 4 | Casing | | | | | |
| 4 | 285 | Granitized greenstone. 68-69 breccia scattered pyrrhotite & sulphides. 88-89 quartz diorite, scattered sulphides. 150.5-151.5 diorite, scattered sulphides. 174.8-176 breccia, blebs of sulphides. 180.5-182 gabbro with scattered sulphides. 194-198 breccia, scattered sulphides. 227 large blob of magnetite. | | | | | |
| 285 | 294 | Gabbro | | | | | |
| 294 | 360 | Granitized greenstone | | | | | |
| 360 | 375.5 | Gabbro | | | | | |
| 375.5 | 507 | Gabbro | | | | | |
| 507 | 509 | Pegmatite | | | | | |
| 509 | 511.5 | Diabase dyke | | | | | |
| 511.5 | 632 | Granitized greenstone | | | | | |
| 632 | 645 | Diabase dyke | | | | | |
| 645 | 692 | Granitized greenstone | | | | | |
| 692 | 699 | Gabbro | | | | | |
| 699 | 759 | Granitized greenstone | | | | | |
| 759 | 779.5 | Norite | | | | | |
| 779.5 | 781.5 | Breccia with scattered sulphides. | | | | | |
| 781.5 | 811.0 | Granitized greenstone. | | | | | |
| | | END OF HOLE. | | | | | |
| | | Test at 811' 38° (No correction) | | | | | |

**DUPLICATE COPY
POOR QUALITY ORIGINAL
TO FOLLOW**

DIAMOND DRILL RECORD

LOGGED BY J. B. Kirk

PROPERTY Skyunner Lake - CLEVELAND COPPER CORPORATION

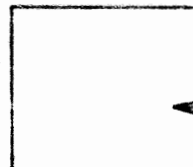
D.D.H. No. 3

PAGE 1

ELEVATION _____ BEARING OF HOLE East (AST) STARTED Oct. 7/56

DEPARTURE _____ DIP OF HOLE 45° COMPLETED Oct. 11/56

DEVIATION _____ DIP TESTS _____ DEPTH _____



CLAIM No. _____

DIRECTION AND DISTANCE FROM

NE. CLAIM POST

LOCATION : L 15N 1100' W. of base line.

| FOOTAGE | | DESCRIPTION | SAMPLE No. | FOOTAGE | | SAMPLE LENGTH | ASSAY | |
|---------|-------|--|------------|---------|----|---------------|-------|--|
| FROM | TO | | | FROM | TO | | | |
| 0 | 4 | Casing | | | | | | |
| 4 | 99 | Granitized greenstone | | | | | | |
| 99 | 103 | Pegmatite | | | | | | |
| 103 | 175 | Granitized greenstone | | | | | | |
| 175 | 205 | Quartz breccia | | | | | | |
| 205 | 225 | Greenstone | | | | | | |
| 225 | 250 | Pegmatite. 231-233 scattered sulphides. | | | | | | |
| 250 | 370 | Granitized greenstone. 264-275 scattered sulphides & magnetite. 305-306 scattered sulphides. 315.5-317.5 scattered sulphides. 335-345 scattered sulphides and magnetite. | | | | | | |
| 370 | 376 | Jasperoid | | | | | | |
| 376 | 380 | Granitized greenstone | | | | | | |
| 380 | 387 | Jasperoid with stringers of epidote. | | | | | | |
| 387 | 400.5 | Granitized greenstone | | | | | | |
| 400.5 | 402.5 | Greenstone | | | | | | |
| 402.5 | 403 | Epidote | | | | | | |
| 403 | 406.5 | Epidote with stringers of Jasperite. | | | | | | |
| 406.5 | 438 | Greenstone | | | | | | |
| 438 | 500 | Granitized greenstone | | | | | | |
| | | 500' END OF HOLE | | | | | | |
| | | Test at 500' - 42° | | | | | | |

**DUPLICATE COPY
POOR QUALITY ORIGINAL
TO FOLLOW**

DIAMOND DRILL RECORD

LOGGED BY J. B. Kirk

PROPERTY Skyner Lake - CLEVELAND COPPER CORPORATION

D.D.H. No. 4 PAGE 1

ALTITUDE _____ BEARING OF HOLE North (Ast) STARTED Nov. 14/56
 DEPARTURE _____ DIP OF HOLE 47° COMPLETED Nov. 18, 56
 ELEVATION _____ DIP TESTS _____ DEPTH _____



CLAIM No. _____
 DIRECTION AND DISTANCE FROM
 NE. CLAIM POST

Location : 180' S of 1.0N on L4E

| FOOTAGE | | DESCRIPTION | SAMPLE No. | FOOTAGE | | SAMPLE LENGTH | ASSAY | | | | | | | |
|---------|-----|--|------------|---------|----|---------------|-------|--|--|--|--|--|--|--|
| FROM | TO | | | FROM | TO | | | | | | | | | |
| 0 | 4 | Casing | | | | | | | | | | | | |
| 4 | 86 | Granitized greenstone | | | | | | | | | | | | |
| 86 | 92 | Granite | | | | | | | | | | | | |
| 92 | 100 | Greenstone | | | | | | | | | | | | |
| 100 | 108 | Red Granite | | | | | | | | | | | | |
| 108 | 117 | Greenstone | | | | | | | | | | | | |
| 117 | 126 | Granitized greenstone | | | | | | | | | | | | |
| 126 | 138 | Red granite | | | | | | | | | | | | |
| 138 | 153 | Greenstone | | | | | | | | | | | | |
| 153 | 170 | Granitized greenstone | | | | | | | | | | | | |
| 170 | 179 | Greenstone | | | | | | | | | | | | |
| 179 | 193 | Jasperoid | | | | | | | | | | | | |
| 193 | 471 | Granitized greenstone : 364-365 disseminated sulphides 394-394.5 epidote, 412-413 breccia fairly heavy sulphides. | | | | | | | | | | | | |
| 471 | 525 | Jasperoid | | | | | | | | | | | | |
| 525 | | END OF HOLE. Test at 525' - 43° (No correction) | | | | | | | | | | | | |

**DUPLICATE COPY
 POOR QUALITY ORIGINAL
 TO FOLLOW**

CLEVELAND COPPER CORP.
PLAN SHOWING LOCATIONS OF D.D. HOLES

1000 FT

DRAWN BY

J. B. Kirk

20 NOV 56

1000 FT

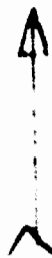


230N

DDH No. 1

297175

133N



W 7



N 41

D

Π

22212

DDH No. 3

12

CON I

2000

612N

43N

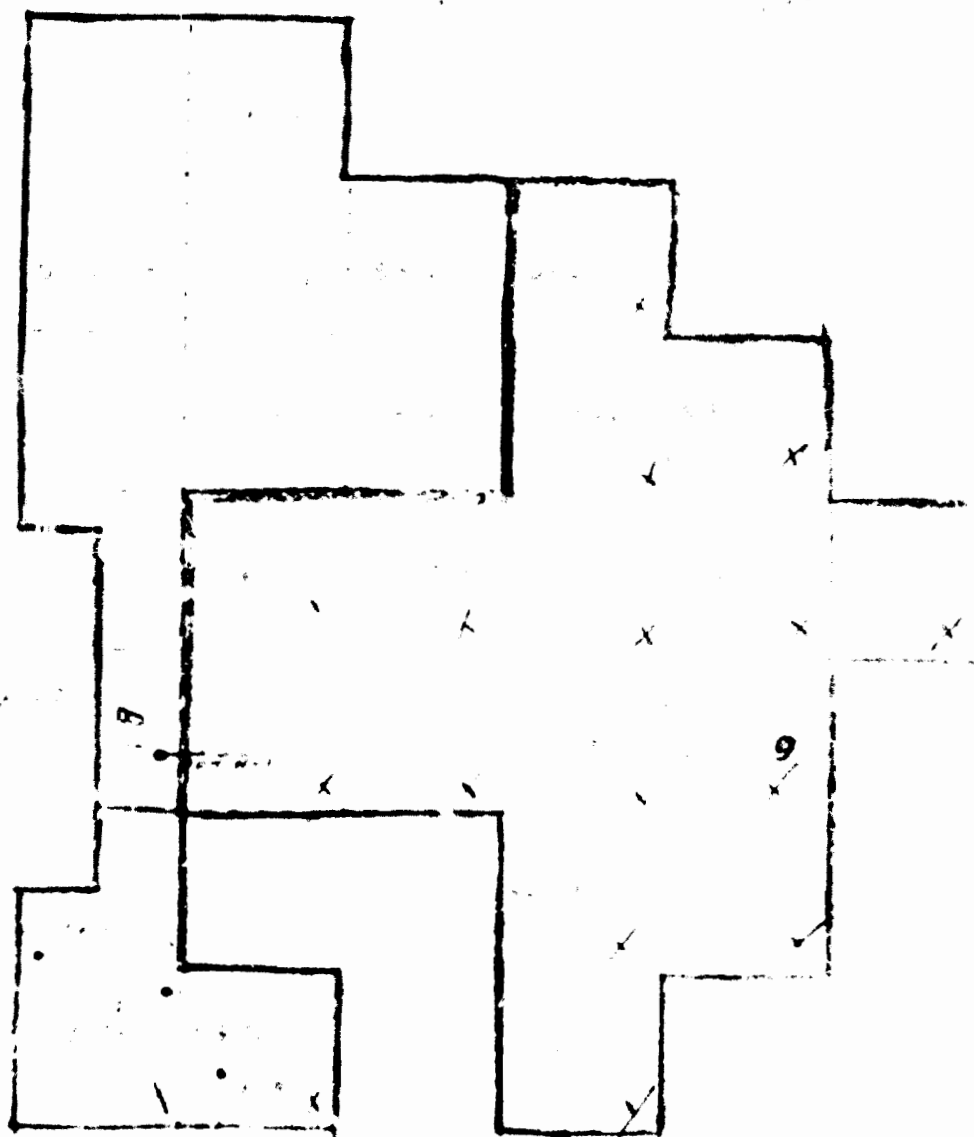
464

57

CON III

LAKO





NO. 1000



50