



41116NE0026 63.449 PHYLLIS

010

REPORT ON SELF-POTENTIAL SURVEY

OF PART OF

OFFSHORE MINES LIMITED PROPERTY

TEMAGAMI LAKE AREA

INTRODUCTION

A self-potential survey of claims T32248 and T31150 of Offshore Mines Limited was completed during October, 1952. The work was done by members of the staff of Frontenac Exploration & Development Co.

LOCATION & ACCESS

The claims are located on the south shore of the Northeast Arm of Temagami Lake in Phyllis Township. They may be reached by boat from the village of Temagami.

GENERAL GEOLOGY

The area surveyed is underlain mainly by highly altered siliceous flows and pyroclastics. These are intruded by dikes of several types. Most important economically are dikes of diorite and quartz diorite.

GEOPHYSICAL SURVEY

The survey was carried out along lines spaced at intervals of 100 feet. The traverse lines were turned off at right angles to a base-line which trends at 107° (true). Readings of self-potential were taken at intervals of 50 feet, with additional intermediate readings in anomaly areas. A potentiometer was used in reading the potentials relative to a point at the west end of the base-line.

DISCUSSION OF RESULTS

The strong anomalies along the shore in the northwest corner of the area outline a zone of sulphide replacement which occurs along the contact between quartz diorite and rhyolite. The anomalies in the central part of the claims occur in a zone of disseminated pyrite and sphalerite with minor chalcopyrite.

CONCLUSIONS AND RECOMMENDATIONS

The self-potential survey indicated that the sulphide zone along the shore in the northwest part of Claim T32248 consists of a series of rather small discontinuous lenses. The lack of "spread" to the contours suggests that there is also a lack of vertical continuity to the zone. In view of the good values in nickel and cobalt in samples taken from the trenches, I would recommend a limited amount of shallow drilling to test this zone.

The rather weak anomaly in the central portion of the claims is indicative of a zone of disseminated sulphides. I would recommend diamond drill holes to test this anomaly along Line I + 0 and Line M + 20.

Respectfully submitted,

MINING GEOPHYSICS CORPORATION LIMITED

N. B. Keevil
N. B. Keevil

Toronto, Ont.,
May 4, 1953

W. R. Bergey
W. R. Bergey

APPENDIX TO MINING GEOPHYSICS CORP. REPORT NO. 364

Surveying, line-cutting, picketing, chaining	15 man-days
Geophysical readings	14 man-days
Calculating, plotting, drafting, etc.	<u>6 man-days</u>
	35 man-days

35 x 4 - 140 days

FIELD WORK:

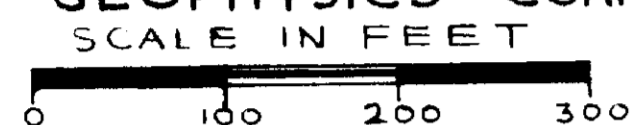
E. O. McAlister, c/o Anaconda Copper Mining, Kearns Bldg., Salt Lake City, Utah.)	Intermittently
J. L. Kelly)	Oct. 1 @ 15, 1952
E. H. Bakland,)	
R. P. Roy)	

OFFICE WORK:

W. R. Bergey, Toronto, Ont.)	April 23 - 25, 1954.
M. Frantz, Toronto, Ont.)	
R. B. Evis, Toronto, Ont.)	

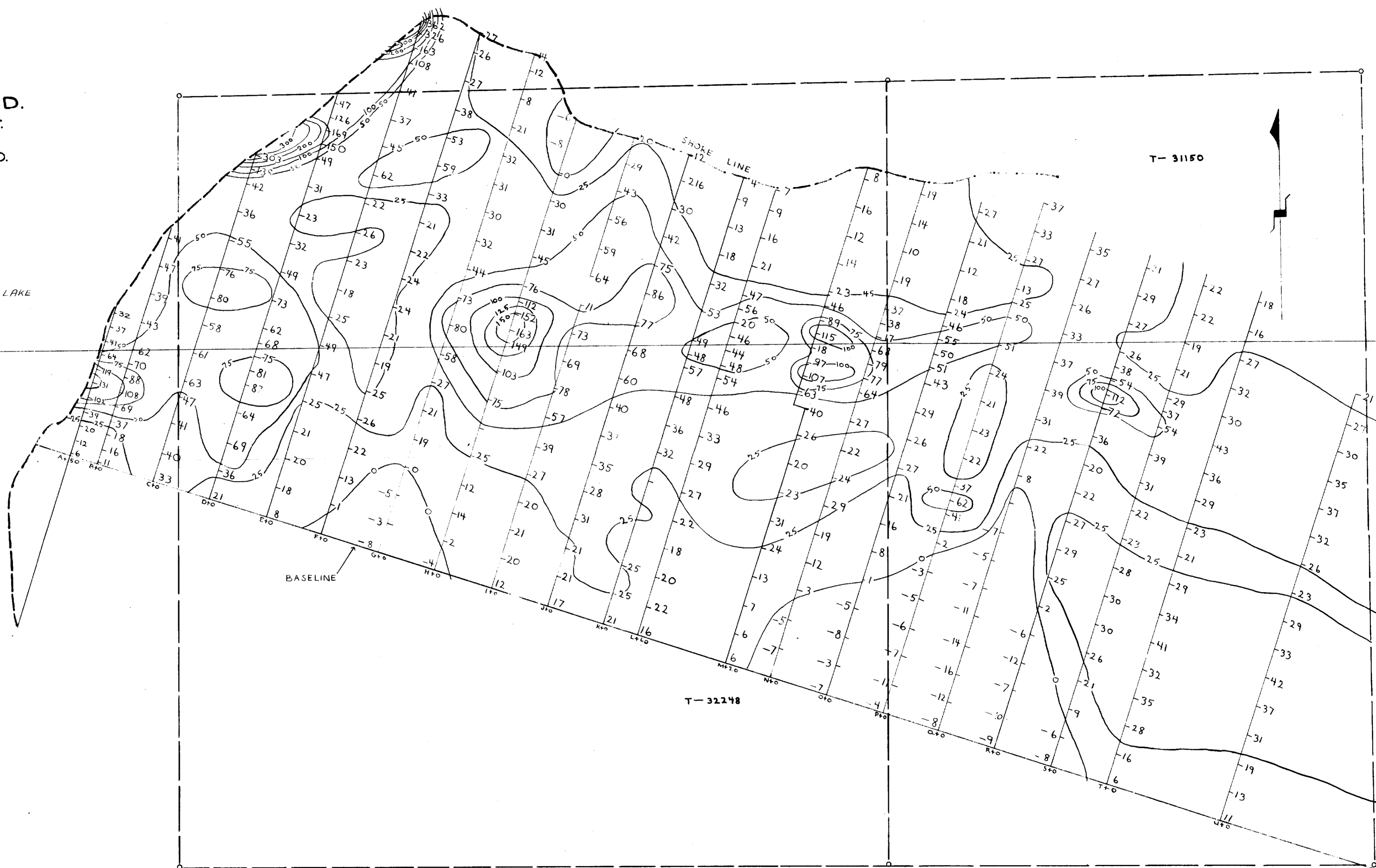
No. of Miles of Line - 4
No. of Stations road - 374

SELF-POTENTIAL SURVEY
OF PART OF
OFFSHORE MINES LTD.
TEMAGAMI LAKE AREA ONT.
BY
MINING GEOPHYSICS CORP. LTD.

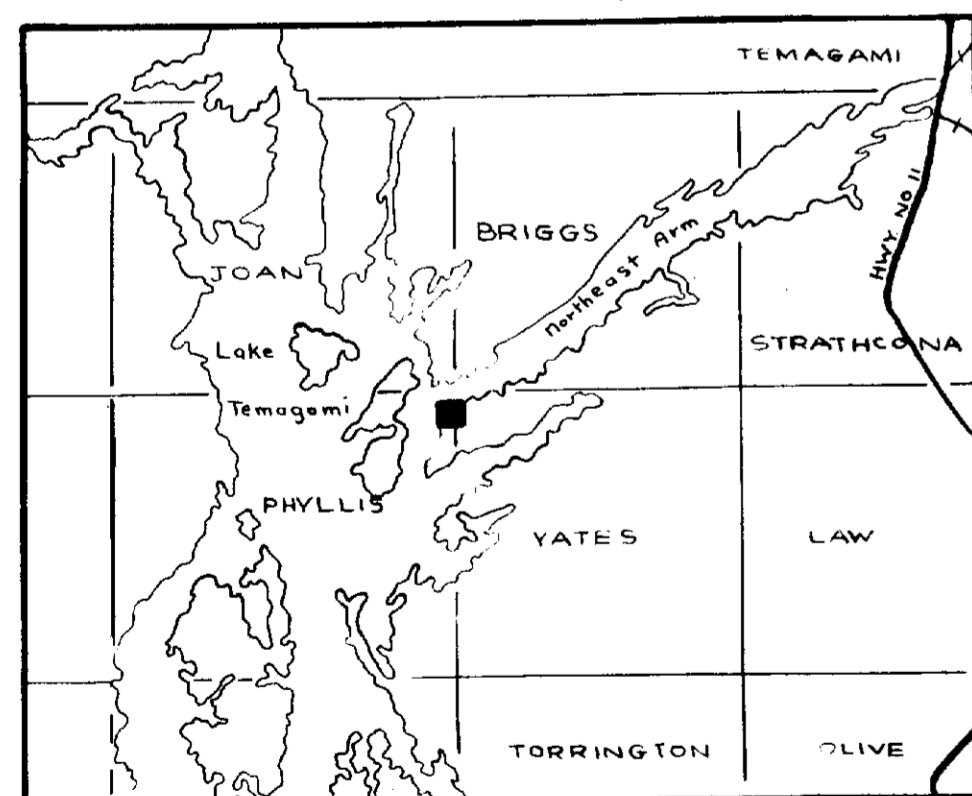


T-31150

TEMAGAMI LAKE



T-32248



LOCATION MAP
SCALE 1 INCH = 8 MILES

MINING GEOPHYSICS
CORPORATION - LIMITED
11 JORDAN ST.
TORONTO, ONT.

DRAFTED BY: N.B.	DATE: May 4/53
TO COMPANY REPORT: 364	COPY No. 2
N. B. Keesel per R.B.E.	



63-449