



REPORT ON

ELECTRICAL RESISTIVITY SURVEY

CLAIM T32701 PHYLLIS TOWNSHIP ONTARIO

TEMAGAMI MINING CO. LTD.

25 Adelaide St. W.
Toronto,

INTRODUCTION

Claim T32701 is located on Lake Temagami, Phyllis Township. It is accessible by boat or aircraft from the town of Temagami.

The claim was surveyed in January 1958 as part of a larger electrical survey on the property of Temagami Mining Company. 60 cycle alternating current was introduced into the ground. Voltage drops were read with a vacuum-tube voltmeter between stations spaced 100 feet apart on traverse lines 200 feet apart and parallel to the electrode line. Apparent average resistivities were calculated and plotted logarithmically.

GENERAL GEOLOGY

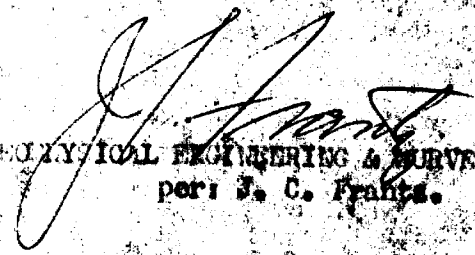
Outcrops on islands within the claim boundaries and on nearby islands indicate that the claim is underlain by ~~white~~ *chrysolite* flows and fragmentals. A small basic dike has been mapped on an island in the northeast corner of the claim.

63-684

DISCUSSION OF GEOPHYSICAL RESULTS

Two local anomalies in the northwest section of the claim were outlined by the survey. It is recommended that these anomalies be tested by diamond drilling.


Respectfully Submitted,



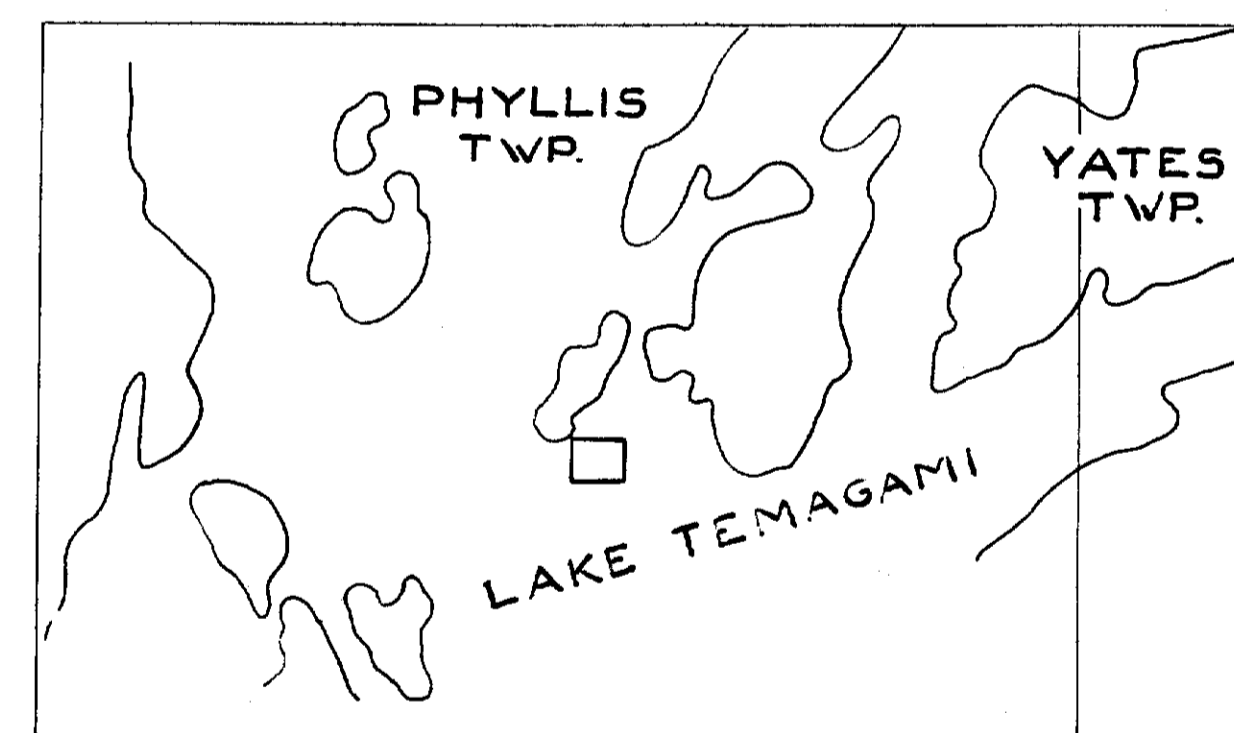
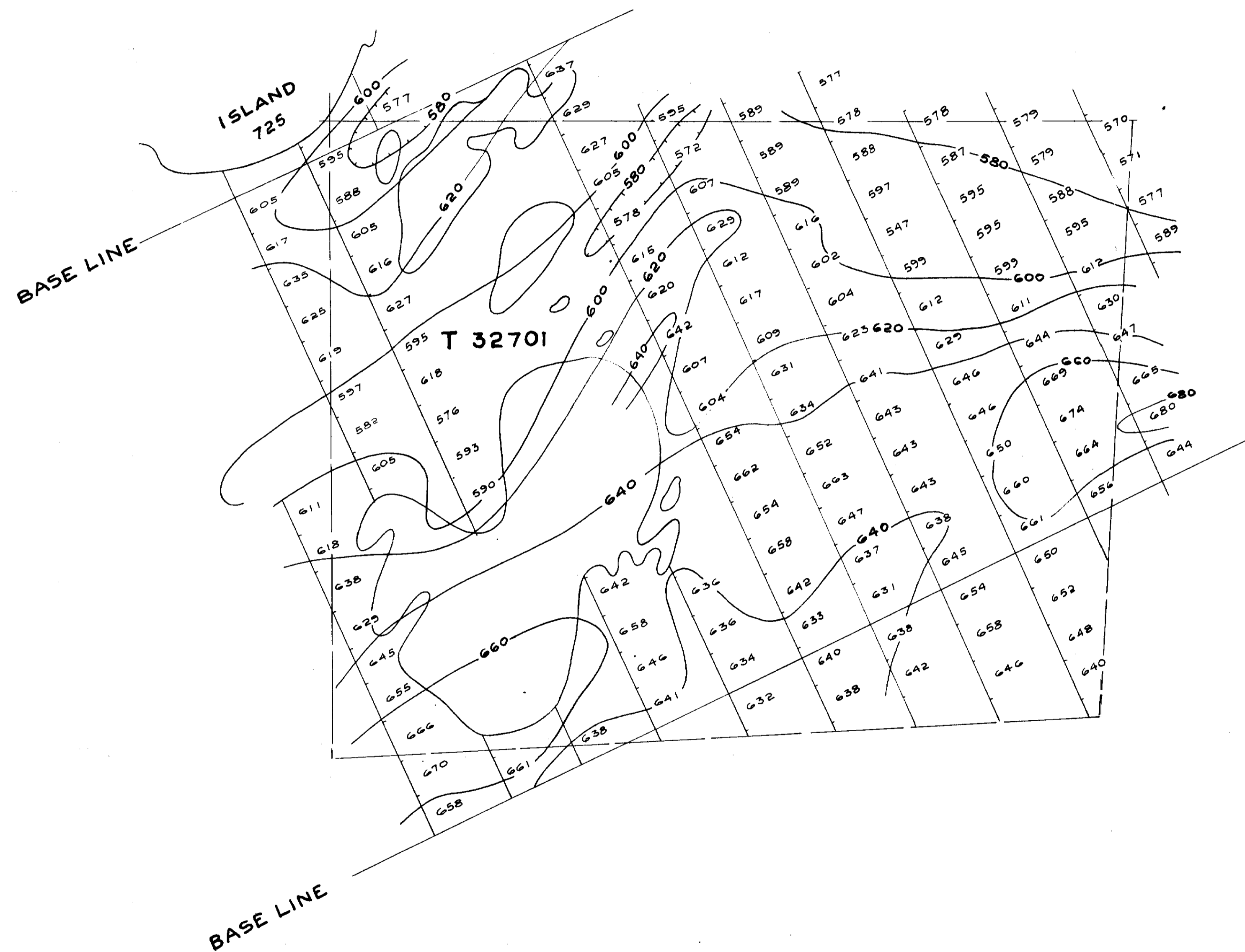
GEOPHYSICAL ENGINEERING & SURVEYS LTD.
per: J. C. Francis.

March 12, 1966
North Bay, Ont.

ELECTRICAL RESISTIVITY SURVEY
 CLAIM T 32701, PHYLLIS TWP.
 FOR
TEMAGAMI MINING CORP. LTD.
 BY
MINING GEOPHYSICS CORP. LTD.

SCALE: 1 INCH = 200 FEET


NOTE: VALUES ARE APPARENT AVERAGE RESISTIVITIES IN MILLIVOLTS.



SCALE: 1 INCH = 1 MILE
 LOCATION MAP

63-684.

DATED: MARCH 1956 DWG. No. 1008

