



41116NW0115 0010 MCCARTHY

010

Diamond Drilling

Township of MCCARTHY

Report NO: 11

Work performed by: Unknown

Claim NO	Hole NO	Footage	Date	Note
S 93582	PDH-1	66.0'	Oct/56	
	PDH-2	99.0'	Oct/56	
	PDH-3	101.6'	Oct/56	
	PDH-4	82.0'	Oct/56	
	PDH-5	66.6'	Oct/56	
	PDH-6	72.6'	Oct/56	
	PDH-7	55.0'	Nov/56	
S 93600	PDH-8	32.6'	Nov/57	
	PDH-9	5.5'	Nov/57	
	PDH-10	28.0'	Nov/57	
	PDH-11	31.0'	Nov/57	
	PDH-12	25.5'	Nov/57	
	PDH-13	37.0'	Dec/57	
S 93582	PDH-14	26.0'	Dec/57	
	PDH-15	32.0'	Dec/57	
Notes:	PDH-16	37.8'	Dec/57	
S 93588	PDH-17	28.5'	Dec/57	

Total: 17 DH 826.7

DIAMOND DRILL RECORD

Hole No. PDE 2 Sheet No. 1

Property 20 claims - 93582 - 93601 incl.
 Location N.E. Corner of McCarthy Twp.
Ontario
 Latitude 17.7 ft. at bearing
 Departure of 0° from Ch. 200W on Line 1+00N
 Bearing _____

Vertical Dip

Vertical	Dip
Total Footage <u>99.0</u>	

Elev. Collar 997.0
 Datum 1000
 Date Started October 18th, 1956
 Date Completed October 20th, 1956
 Drilled by W. Charest
 Logged by J. C. Baker

Footage		Formation	Sample Number	Sample Footage	Sample Width	Gold Sample	Gold Sludge	Remarks
From	To							
						cu.	Ni	
0.0	1.7	Casing core, diabase, medium grain, Gabbroic texture slight magnetite content						
1.7	17.8	Similar to previous section. Scattered flecks of chalcopyrite & pyrrhotite chlorite in jointing at 45° to core						
17.8	22.8	Mineralised zone in similar diabase chalcopyrite & pyrrhotite in irregular patches unworthy of assay						
22.8	32.5	Diabase, gabbroic texture, increase in grain size. Biotite content now visible. Very minor widely scattered pea size combined chalcopyrite & pyrrhotite						
32.5	40.9	Diabase. Similar as previous section						
40.9	66.0	Diabase. Medium-grain gabbroic texture. No. sulphides.						
66.0	71.0	As previous section with pea size combined chalcopyrite and pyrrhotite	207	5.0		.49	.13	
71.0	76.8	Diabase gabbroic, medium grain first foot only contains minor pods of chalcopyrite and pyrrhotite unworthy of assay						
76.8	99.0	Diabase, similar texture. Jointing at 40° very minor sulphides in first 3 feet only						
		<u>AVERAGE RECOVERY: 100%</u>						
		<u>RECOVERY IN MINERALIZATION: 100%</u>						
		<u>SIZE OF CORE - EX</u>						

Date of Examination October 20th, 1956

J. C. Baker

ALLOCATION

TYPE OF WORK	MAN-DAYS	TOTAL	APPLIED TO	
			GEOLOGICAL	GEOPHYSICAL
LINE-CUTTING AND CHAINING	204 32	236	118	118
DRAUGHTING & OFFICE WORK	100 8	108	54	54
GEOLOGICAL MAPPING	88 48	136	136	—
GEOPHYSICAL SURVEY	44 16	60	—	60
		590	308	232
<u>DIAMOND DRILLING</u>				
	<u>538 FT</u>			

DIAMOND DRILL RECORD

P D H NO. 8

PROPERTY - S 93582 - 90
S 93592 - 94
S 93596 - 601
LOCATION - NE CORNER
McCARTHY TWP.
LAT. - DEP.

BEARING - AZ. 68°
DIP 30°
LENGTH 32.6 FT.
STARTED NOV. 26, 1957
DRILLED BY A. MATHE
LOGGED BY JOHN SIROLA

<u>FOOTAGE</u>		<u>DESCRIPTION</u>	<u>SAMPLE</u>		<u>SAMPLE</u>		
<u>FROM</u>	<u>TO</u>		<u>NUMBER</u>	<u>LENGTH</u>	<u>CU</u>	<u>NI</u>	<u>AG</u>
0	25 FT.	Diabase Med. Grained					
2.5	13 "	Diabase Fine Grained Numerous Qtz-Calcite Str. 7.1-7.2 Qtz. With 25% Chalco Slight Scattered Mineral Elsewhere Veinlets 45° to Core.					
13	19.4	Diabase Med. Grained					
19.4	26	Diabase Finer Grained Carbonatized With Qtz-Carb. Stringers					
26	32.6	Diabase Med. Grained.					

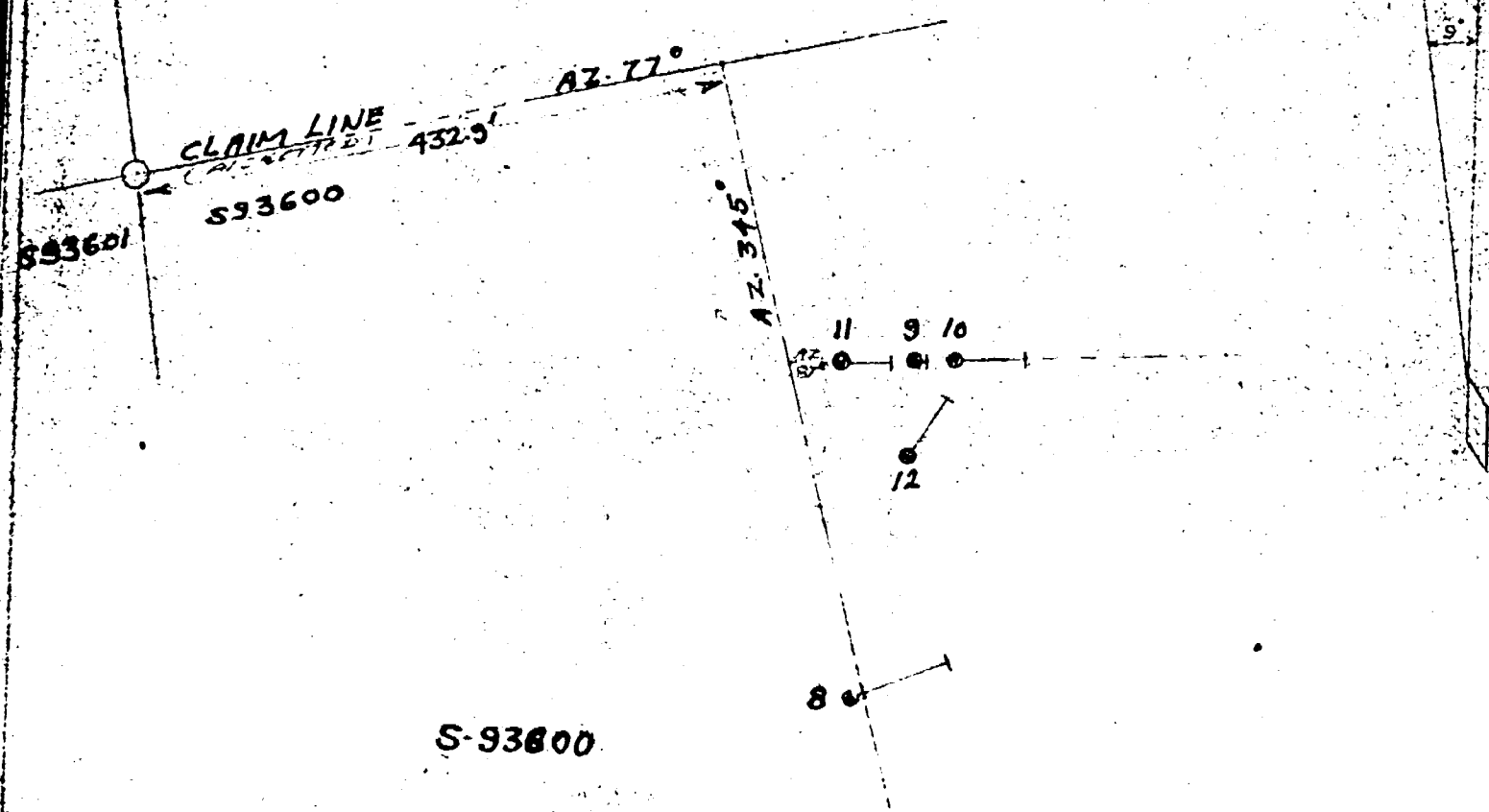
DIAMOND DRILL RECORD

P D H NO. 9

PROPERTY - S 93582 - 90
 S 93592 - 94
 S 93596 - 601
LOCATION - NE CORNER
 McCARTHY TWP. ONT
LAT - DEP.

BEARING AZ-87°
DIP 55°
LENGTH 5.5'
STARTED NOV. 27, 1957
DRILLED BY A. MATHE
LOGGED BY JOHN SIROLA.

<u>FOOTAGE</u>		<u>DESCRIPTION</u>	<u>SAMPLE</u>		<u>SAMPLE</u>		
<u>FROM</u>	<u>TO</u>		<u>NUMBER</u>	<u>LENGTH</u>	<u>CU</u>	<u>NI</u>	<u>AG</u>
0	4.6	Diabase - Fine Grained Carbonatized					
4.6	5.5	Diabase Med. Grained.					



DIAMOND DRILL HOLE LOCATIONS
CLAIM S-93600

McCarthy Township, Ontario

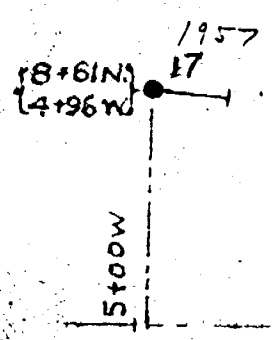
D.D.H.	DIP	BEARING	DEPTH
8	30°	AZ-68°	32.6'
9	55°	AZ-87°	5.5'
10	45°	AZ-87°	28.0'
11	60°	AZ-87°	31.0'
12	40°	AZ-34°	25.5'
13	40°	AZ-35°	37.0'

CLAIM POSTS & LINES
 DIAMOND DRILL HOLE
 PICKET LINES

CORE STORED AT DRILL SITES

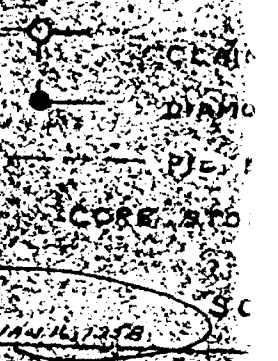
SCALE 1 inch = 40 Feet

Scale



DIAMOND DRILL HOLE LOCATIONS
CLAIM S-93600
 McCarthy Township, Ontario

D.D.H.	DIP
17	48°



SCALE 1 inch = 40 Feet

1957
17
(8+61N)
(4+96W)

5+00W

4+00W

3+00W

2+00W

1+00W

9+00N

8+00N

S 93598

S 93586

7+00N

6+00N

5+00N

DIAMOND DRILL HOLE LOCATIONS
CLAIM - S 93598
McCortny Township Ontario

D.D.H.	DIP	BEARING	DEPTH
17	48°	AZ. 95°	28.5'

○ CLAIM BOUNDARY LINES
 ● DIAMOND DRILL HOLE
 --- P.L. LINES
 CORE REPORT BY D.S.M. NO. 17
 SCALE 1" = 100 FEET
 JAN 11 1958



BASE LINE 0°

DIAMOND DRILL RECORD

P.D.H. 10

PROPERTY - S 93582 - 90
 S 93592 - 94
 S 93596 - 601
LOCATION - NE CORNER
 McCARTHY TWP. ONT.
LAT. - DEP.

BEARING - AZ. 87°
DIP - 45°
LENGTH - 28 Ft.
STARTED - Nov. 28, 1957
DRILLED BY - A. MATHE
LOGGED BY - JOHN SIROLA

<u>FOOTAGE</u>		<u>DESCRIPTION</u>	<u>SAMPLE</u>		<u>SAMPLE</u>		
<u>FROM</u>	<u>TO</u>		<u>NUMBER</u>	<u>LENGTH</u>	<u>CU</u>	<u>NI</u>	<u>AG</u>
0	4.5	Fine Gr. Carbonatized Diabase - A few Qtz. Str.					
4.5	5.5	Diabase Med. Gr.					
5.5	7.2	Diabase, Fine Gr. A few Narrow Qtz. Str. - Narrow Section Pyrite - Chalco at 6.1 Ft.					
7.2	15	Diabase Med. Gr.					
15	20	Diabase Fine Gr. with Qtz-Carb Stringers					
20	26	Diabase Med. Gr.					
26	28	Diabase Fine Gr. with Qtz-Carb Str.					

DIAMOND DRILL RECORD

P.D.H. 11

PROPERTY - S 93582 - 90
 S 93592 - 94
 S 93596 - 601
LOCATION - NE CORNER
 McCARTHY TWP. ONT.
LAT. - DEP.

BEARING - AZ. 87°
DIP - 60°
LENGTH - 31 FT.
STARTED - Nov. 28, 1957
DRILLED BY - A. MATHE
LOGGED BY - JOHN SIROLA

<u>FOOTAGE</u>		<u>DESCRIPTION</u>	<u>SAMPLE</u>		<u>SAMPLE</u>		
<u>FROM</u>	<u>TO</u>		<u>NUMBER</u>	<u>LENGTH</u>	<u>CU</u>	<u>NI</u>	<u>AG</u>
0	5	Casing - Sand - Pebbles					
5	11.5	Diabase, Carbonatized					
11.5	23	6.8 to 7 15% Pyrite - Chalco Predominantly Med. Gr. Diabase with Gabbroic Sections - A few Narrow Qtz. Stringers.					
23	26.5	Diabase, Fine Gr. Carbonatized and Cut by Numerous Qtz-Carb. Str.					
26.5	27.4	23.9 to 24.4 4% Chalco. Diabase - Gabbroic with Pink Feldspar - Partly Mineralized with Chalco.					
27.4	31	Diabase - Medium Gr.					

DIAMOND DRILL RECORD

P.D.H. 12

PROPERTY - S 93582 - 90
 S 93592 - 94
 S 93596 - 601
LOCATION - NE CORNER
 McCARTHY TWP. ONT.
LAT. - DEP.

BEARING - AZ 34°
DIP - 40°
LENGTH - 25.5
STARTED - Nov. 29, 1957
DRILLED BY - A. MATHE
LOGGED BY - JOHN SIROLA

<u>FOOTAGE</u>		<u>DESCRIPTION</u>	<u>SAMPLE</u>		<u>SAMPLE</u>		
<u>FROM</u>	<u>TO</u>		<u>NUMBER</u>	<u>LENGTH</u>	<u>CU</u>	<u>NI</u>	<u>AG</u>
0	3	Diabase Med Gr.					
3	8	Diabase, Fine Gr. Carbonatized, Qtz Stringers Some Narrow Qtz. Str. Contain Chalco and Pyrite, Malachite					
8 -	17.5	Diabase, Med. Gr. Some Pink Feldspar.					
17.5 -	20.3	Diabase, Fine Gr. Carbonatized A Few Qtz-Carb. Str. 18-9 to 19.1 Pyrite and Chalco Containing 10% Qtz.					
20.3	25.5	Diabase Med. Grained.					

DIAMOND DRILL RECORD

P.D.H. 13

PROPERTY - S 93582 - 90
 S 93592 - 94
 S 93596 - 601
 LOCATION - NE CORNER
 McCARTHY TWP. ONT.
 LAT. - DEP.

BEARING AZ. 35°
 DIP 40°
 LENGTH 37 FT.
 STARTED Dec. 1, 1957.
 DRILLED BY A. MATHE
 LOGGED BY JOHN SIROLA

<u>FOOTAGE</u>		<u>DESCRIPTION</u>	<u>SAMPLE</u>		<u>SAMPLE</u>		
<u>FROM</u>	<u>TO</u>		<u>NUMBER</u>	<u>LENGTH</u>	<u>CU</u>	<u>NI</u>	<u>AG</u>
0	6.5	Casing - Surface Swampy. Sand and Gravel					
6.5	8.8	Diabase, Med. Gr. Gabbroic in Places, with Pink Feldspars Considerable Chalco at Surface of Bedrock.					
8.8	to 9.6	Diabase, Finer Gr. Carbonatized Containing Qtz-Carb Stringers.					
9.6	23	Diabase, Med. Gr. Partly Gabbroic With Pink Feldspars.					
23	- 28.5	Diabase, Finer Gr., Carbonatized with Veinlets of Qtz and Calcite.					
28.5	- 37	Diabase. Med. Gr. with Pink Feldspars.					

DIAMOND DRILL RECORD

P.D.H. 14

PROPERTY - S 93582 - 90
 S 93592 - 94
 S 93596 - 601
LOCATION - NE CORNER
 McCARTHY TWP. ONT.
LAT. - DEP.

BEARING
DIP Vertical
LENGTH 26 FT.
STARTED DEC. 3, 1957.
DRILLED BY A. MATHE
LOGGED BY JOHN SIROLA

<u>FOOTAGE</u>		<u>DESCRIPTION</u>	<u>SAMPLE</u>		<u>SAMPLE</u>		
<u>FROM</u>	<u>TO</u>		<u>NUMBER</u>	<u>LENGTH</u>	<u>CU</u>	<u>NI</u>	<u>AG</u>
0	9	Qtz - Diabase, Med. Gr Minor Scattered CQ, Pyrh. Small Intrusive 1.7 to 1.9 with Pink Feldspars					
9	23.7	Mineralized Zone Qtz-Diabase, Med. Gr 3-6% Closely Associated Pyrite and Chalco, Match Head Sized and Smaller. About Equal Amounts of Pyrrhotite and Chalco.					
23.7	26	Qtz-Diabase					

Core 0-25 Ft. Taken to
Cobalt Office for Sampling.

DIAMOND DRILL RECORD

F.D.H. 15

PROPERTY - S 93582 - 90
 S 93592 - 94
 S 93596 - 601
LOCATION - NE CORNER
 McCARTHY TWP. ONT
LAT. - DEP.

BEARING
DIP Vertical
LENGTH 32 FT.
STARTED Dec. 4, 1957
DRILLED BY A. MATHE
LOGGED BY JOHN SIROLA

<u>FOOTAGE</u>		<u>DESCRIPTION</u>	<u>SAMPLE</u>	<u>SAMPLE</u>			
<u>FROM</u>	<u>TO</u>		<u>NUMBER</u>	<u>LENGTH</u>	<u>CU</u>	<u>NI</u>	<u>AG</u>
0	32	Qtz - Diabase Med. Gr, A few Narrow Gabbroic Sections 20.9 to 21.2 Gabbroic With Pink Feldspars 21.4 - 22.1 Bleached and Intersected By Qtz - Carb. Stringers Approx. 45° to Core. Joint at 32-Ft. with Qtz Stringer and Minor Chalco and Pyrrhotite.					

DIAMOND DRILL RECORD

P.D.H. 16

PROPERTY - 3 93582 - 90 BEARING AZ - 250°
 S 93592 - 94 DIP 50°
 S 93596 - 601 LENGTH 37.8 FT.
LOCATION - NE CORNER STARTED Dec. 5, 1957
 McCARTHY TWP. ONT DRILLED BY A. MATHE
LAT. - DEP. LOGGED BY JOHN SIROLA.

<u>FOOTAGE</u>		<u>DESCRIPTION</u>	<u>SAMPLE</u>		<u>SAMPLE</u>		
<u>FROM</u>	<u>TO</u>		<u>NUMBER</u>	<u>LENGTH</u>	<u>CU</u>	<u>NI</u>	<u>AG</u>
0	5	Qtz - Diabase Med. Gr. With One Gabbroic Section					
5	8.9	Diabase, Fine Gr With Bleaching in two Places One Small Section With Pink Feldspars.					
8.9	37.8	Qtz - Diabase Med. Gr. With Some Gabbroic Material.					

DIAMOND DRILL RECORD

P.D.H. 17

PROPERTY - S 93582 - 90
S 93592 - 94
S 93596 - 601
LOCATION - NE CORNER
McCARTHY TWP. ONT
LAT. - DEP.

BEARING AZ. 95°
DIP 48°
LENGTH 28.5 FT.
STARTED Dec. 7, 1957
DRILLED BY A. MATHE
LOGGED BY JOHN SIROLA

<u>FOOTAGE</u>		<u>DESCRIPTION</u>	<u>SAMPLE</u>		<u>SAMPLE</u>		
<u>FROM</u>	<u>TO</u>		<u>NUMBER</u>	<u>LENGTH</u>	<u>CU</u>	<u>NI</u>	<u>AG</u>
0	28.5	Diabase - Med to Fine Gr. with Numerous Qtz-Calcite Stringers at 45° 21.4 - 21.7 Mineralized with Chalco and Pyrite 25.5 to 26 - Gabbroic with Pink Feldspar.					

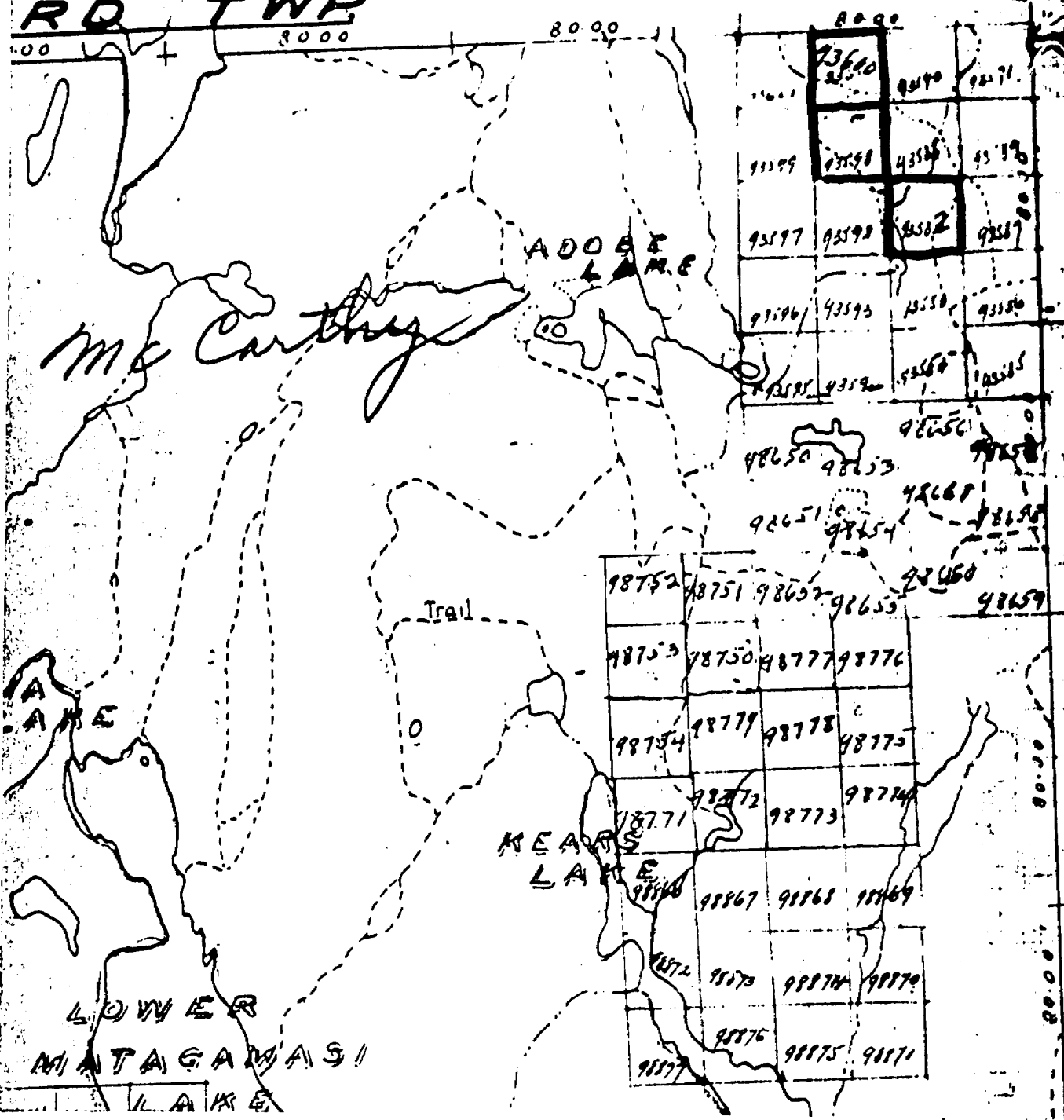
N OF HY TWP.

5-17-20

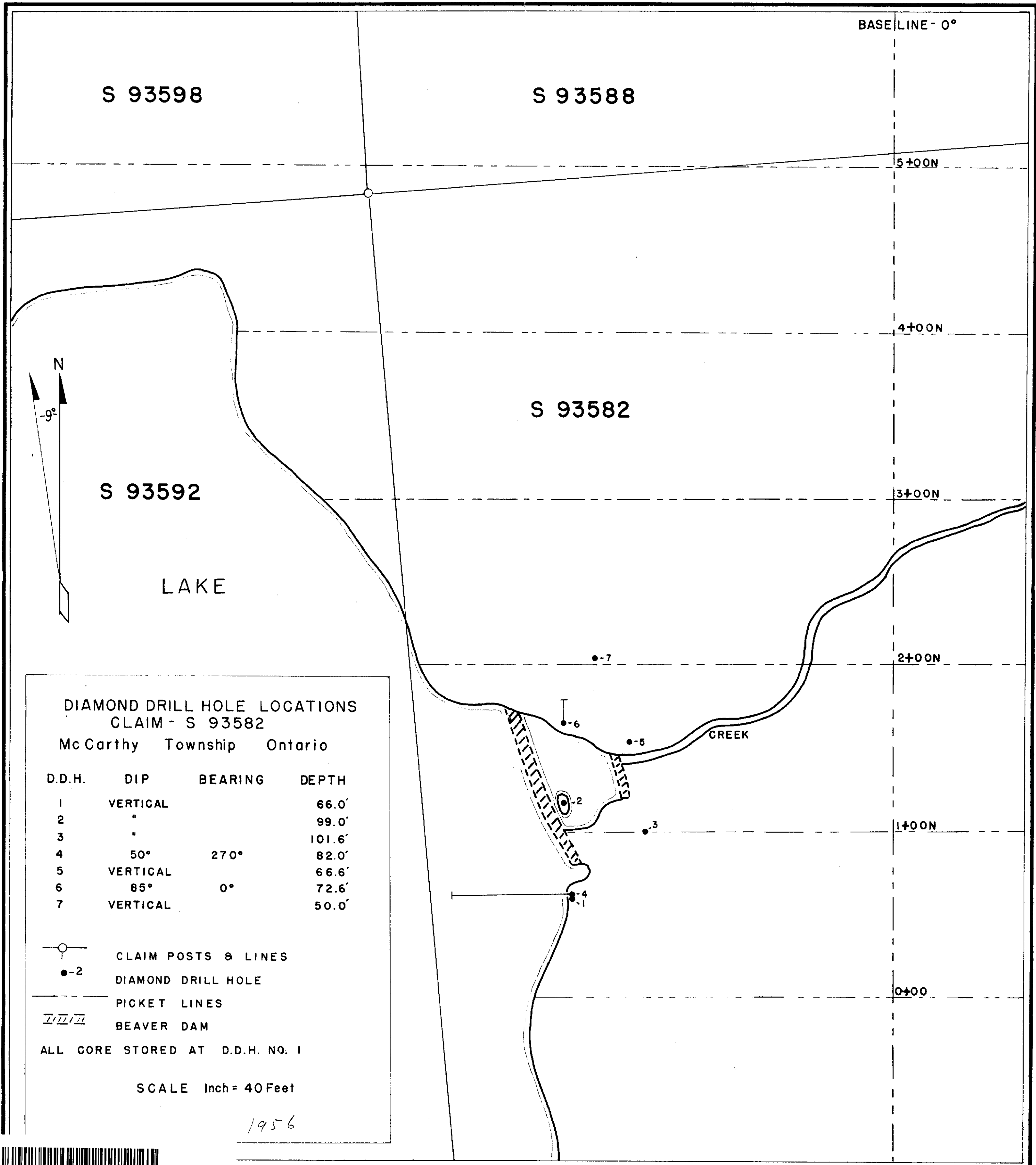
ING DIVISION OF SUDBURY.

ns to an inch.

RD TWP



ACBETH TWP



S 93598

S 93588

BASE LINE - 0°

5+00N

4+00N

S 93582

S 93592

3+00N

LAKE

2+00N

•-7

DIAMOND DRILL HOLE LOCATIONS
CLAIM - S 93582

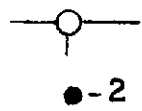
McCarthy Township Ontario

D.D.H.	DIP	BEARING	DEPTH
1	VERTICAL		66.0'
2	"		99.0'
3	"		101.6'
4	50°	270°	82.0'
5	VERTICAL		66.6'
6	85°	0°	72.6'
7	VERTICAL		50.0'

CREEK

1+00N

0+00

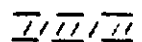


CLAIM POSTS & LINES



DIAMOND DRILL HOLE

PICKET LINES



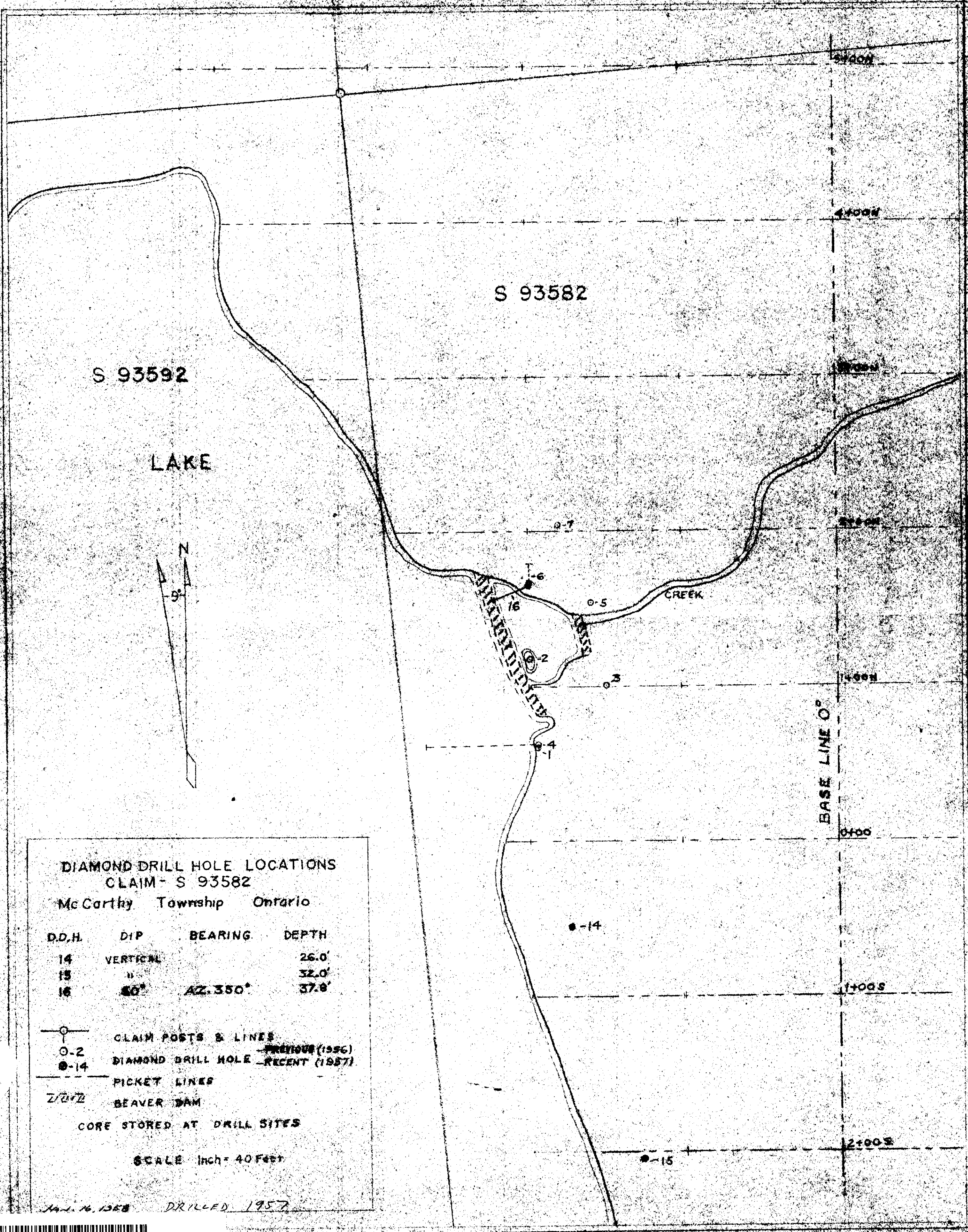
BEAVER DAM

ALL CORE STORED AT D.D.H. NO. 1

SCALE Inch = 40 Feet

1956





DIAMOND DRILL HOLE LOCATIONS
CLAIM - S 93582
McCarthy Township Ontario

D.D.H.	DIP	BEARING	DEPTH
14	VERTICAL		26.0'
15	"		32.0'
16	50°	AZ. 350°	37.8'

- CLAIM POSTS & LINES
- 2 DIAMOND DRILL HOLE - PREVIOUS (1956)
- 14 DIAMOND DRILL HOLE - RECENT (1957)
- PICKET LINES
- ~ BEAVER DAM

CORE STORED AT DRILL SITES

SCALE Inch = 40 Feet

Jan. 16, 1958 DRILLED 1957



MCCARTHY-0010 #2