



41116NW9579 AFTON 21B1 AFTON

AFTON TWP.

010

ALL AND SINGULAR, that certain parcel or tract of land and premises, situate, lying and being in Emerald Lake in the Temagami Forest Reserve and being composed of a water lot W.D.1404. and containing by admeasurement forty (40) acres be the same more or less and which said parcel of land may be more particularly described as follows:

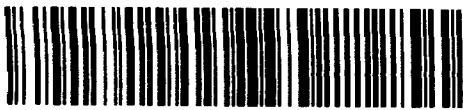
THAT IS TO SAY, commencing at the North easterly angle of Mining Claim W.D.154, thence southerly and along the easterly limit of the said Mining Claim W.D.154, six (6) chains and thirty (30) links, thence West Astronomically two (2) chains more or less to the intersection of the same with the westerly shore of Emerald Lake, which point is the place of beginning, thence still West Astronomically twenty six (26) chains and eighty (80) links, thence South Astronomically twenty three (23) chains and sixty five (65) links, thence East Astronomically thirteen (13) chains and sixty (60) links more or less to the said westerly shore of Emerald Lake, thence Northerly and Easterly and following the high water mark of the said shore line to the place of beginning.

(sgd.)

O.L. Surveyors.

Sudbury, March 28th.1910.





41116NW9579 AFTON

21B1 AFTON

020

Events in the history of the Golden Rose Mine,  
Afton Township

The Golden Rose deposit was discovered about 1897. On April 16, 1910, the Golden Rose Mining Company Ltd. was incorporated with a capital stock of \$500,000.00 to develop the property. They obtained some gold in 1915 and 1916. In 1919, the company went into liquidation.

Oscar Smith of Sudbury bought the Golden Rose Mine from W. R. Sweeney of Toronto in 1922. On June 11, 1927, Afton Mines Ltd. was incorporated in Toronto, with a capital stock of \$2,000,000.00 (2,000,000 shares at \$1.00 par value). The executives of this new company were E. W. Mitchell, president, P. M. King, secretary-treasurer, and Alva H. Cole, all of New York, and Wm. Porri, manager, and O. R. Smith, both of Sudbury. Work reports from 1928 to 1941 are summarized in table form below.

In June, 1934, the Golden Rose property was optioned by Consolidated Mining and Smelting Company of Canada Ltd. On April 4, 1935, a new company was formed to take over the property from Afton Mines Ltd., in return for 1,000,000 shares of the new company's stock. The company, New Golden Rose Mines Ltd., had an authorized capitalization of 3,000,000

shares at \$1.00 par value. Consolidated Mining and Smelting Company of Canada Ltd. was to receive the remaining 2,000,000 shares of stock on an expenditure basis. The expenditure was completed during 1935, and the option fulfilled. The officers of the New Golden Rose Mines Ltd. were J. Bradley Streit, president, W. M. Archibald, vice-president, Jas. E. Riley, treasurer, J. J. Warren, E. G. Montgomery, W. R. McHenry, directors, W. E. Aitchison, mine superintendent, and D. C. McKechnie, mine manager.

The Golden Rose mine was owned by the New Golden Rose Mines Ltd., and operated under the direction of Consolidated Mining and Smelting Company of Canada Ltd. with W. E. Aitchison as mine superintendent and D. C. McKechnie as mine manager until 1941. New Golden Rose Mines Ltd. went into voluntary liquidation early in 1942, and the mine was acquired by Consolidated Mining and Smelting Company of Canada Ltd. Although some gold and silver was recovered from the ore reserves in 1942 and 1943, the mine and mill have been idle since mid-1941.

TABLE I - Underground Development to 1935

(all measurements in feet)

OWNER	'	'	Afton	'	New Golden Rose Mines
	'	'	Mines Ltd.	'	Ltd.
YEAR	'	Prior to	1927	'	1935
	'	1927	'	'	'
LEVEL	'		150	'	150 '275 '400
DRIFTING	'		-	'	34 '616 '751
CROSSCUTTING	'		270	'	'249 '210
RAISING	'		-	'	'
WINZE SUNK	'		-	'	'266
WINZE TOTAL	'	150	150	'	'416
WINZE COMPARTMENTS	'	2	2	'	' 2

Prior to 1936, the two-compartment vertical shaft went down from a 200 foot adit, 66 feet below the surface at the shaft. In 1936, the shaft was made three-compartment by slashing to its full depth, and carried through to surface from the adit level. This made the shaft 482 feet deep, and the 150-, 275-, and 400-foot levels became the 216-, 341-, and 466-foot levels.

TABLE II - Underground Development, 1936 to 1938 (SL indicates sublevel)

OWNER		NEW GOLDEN ROSE MINES LTD.																		
YEAR	1936						1937						1938							
	'Adit'		'SL'		'Adit'		'SL'		'Adit'		'SL'		'Adit'		'SL'					
LEVEL	'66'	'216'	341	'466'	66	'216'	'316'	341	'396'	466	'591'	'716'	66	'216'	'316'	341	'396'	466	'591'	'716'
DRIFTING	-	4	385	'183'	9	'134'	30	440	'277'	316	-	-	-	'213'	'152'	'376'	'1002'	'570'	'412'	'802'
TOTAL	-	'38'	'1001'	'934'	9	'172'	30	'1442'	'323'	'1249'	-	-	9	'385'	'182'	'1818'	'1325'	'1819'	'412'	'802'
CROSSCUTTING	123	-	305	'212'	-	'60'	-	10	'81'	138	'155'	'217'	86	-	-	'151'	92	160	'61'	'271'
TOTAL	'323'	'270'	554	'422'	323	'330'	-	'564'	'95'	559	'155'	'217'	409	'330'	-	'715'	'187'	719	'216'	'488'
RAISING	-	-	60	'200'	-	'75'	-	253	'16'	76	-	-	-	'167'	83	45	'136'	185	'57'	-
TOTAL	-	-	60	'200'	-	'75'	-	'313'	'16'	276	-	-	-	'242'	83	'358'	'152'	461	'57'	-
WINZE SUNK	66						247													
WINZE TOTAL	482						735						735							
WINZE	3						3						3							
COMPARTMENTS																				

TABLE III - Underground Development, 1939 to 1940

OWNER	NEW GOLDEN ROSE MINES LTD.																					
YEAR	1939									1940												
	Adit	SL	SL	SL	SL	SL	SL	SL	SL	Adit	SL	SL	SL	SL	SL	SL	SL	SL				
LEVEL	' 66	' 216	' 316	' 341	' 396	' 466	' 526	' 591	' 716	' 66	' 216	' 316	' 341	' 396	' 466	' 526	' 391	' 651	' 716	' 841	' 966	
DRIFTING	' -	' -	' -	' 215	' 429	' 428	' 75	' 464	' 1305	' -	' -	' -	' -	' -	' -	' -	' 96	' 36	' 244	' 15	' 25	
TOTAL	' 9	' 385	' 182	' 2032	' 1754	' 2247	' 75	' 875	' 2107	' 9	' 385	' 182	' 2032	' 1754	' 2247	' 75	' 972	' 36	' 2351	' 15	' 25	
CROSSCUTTING	' -	' -	' -	' 73	' 77	' 179	' 38	' 60	' 134	' -	' -	' -	' -	' -	' 5	' -	' 16	' -	' 121	' -	' -	
TOTAL	' 409	' 326	' -	' 790	' 263	' 921	' 38	' 275	' 622	' 409	' 326	' -	' 790	' 263	' 926	' 38	' 291	' -	' 743	' -	' -	
RAISING	' -	' -	' -	' 127	' 121	' 372	' -	' 453	' 75	' -	' -	' -	' -	' -	' 54	' -	' 84	' -	' 633	' -	' -	
TOTAL	' -	' 241	' 82	' 487	' 272	' 833	' -	' 510	' 75	' -	' 241	' 82	' 486	' 272	' 887	' -	' 594	' -	' 708	' -	' -	
WINZE SUNK					---																398	
WINZE TOTAL					735						735			plus								398
WINZE					3						3											2
COMPARTMENTS																						collared at 716 feet, inclined at 43°

TABLE IV - Underground Development, 1941,  
and total Underground Development

OWNER	NEW GOLDEN ROSE MINES LTD.												
YEAR	1940												TOTAL
LEVEL	'Adit'	'SL'	'SL'	'SL'	'SL'	'SL'	'SL'	'SL'	'SL'	'SL'	'SL'	'SL'	'SL'
	'66	'216	'316	'341	'396	'466	'526	'391	'651	'716	'841	'966	
DRIFTING	-	-	-	-	-	-	-	192	-	135	592	774	
TOTAL	'9	'385	'182	'2032	'1754	'2247	'75	'1164	'36	'2486	'607	'799	'11,776
CROSSCUTTING	-	-	-	-	-	-	-	-	-	-	46	171	
TOTAL	'409	'326	'-	'790	'263	'926	'38	'291	'-	'743	'46	'171	'4,003
RAISING	-	-	-	-	-	-	-	-	-	157	-	-	
TOTAL	'-	'241	'82	'486	'277	'887	'-	'594	'-	'865	'-	'-	'3,432
WINZE SUNK		vertical						43 <sup>o</sup>					
WINZE TOTAL		735						398					
WINZE COMPARTMENTS		3						2					



TABLE V DIAMOND DRILLING (in feet)

YEAR	'1927'	'1934'	'1935'	'1936'	'1937'	'1938'	'1939'	'1940'	'1941'	TOTAL
SURFACE	'2669'	'2775'	'957'		'1060'	'5315'	'857'	'1853'		'15486'
UNDERGROUND	' - '	' - '	'1321'		'1560'	'4351'	'6145'	'3382'		'16759'
TOTAL	'2669'	'2775'	'2278'		'2620'	'9666'	'7002'	'5235'	'8724'	'40969'

5,000 ft. of surface trenching 2½ ft. deep was also completed

TABLE VI MEN EMPLOYED

YEAR	'1935'	'1936'	'1937'	'1938'	'1939'	'1940'
SURFACE	'31'	'	'	'	'	'44'
UNDERGROUND	'23'	'	'	'	'	'57'
TOTAL	'54'	'99'	'149'	'127'	'118'	'101'

In 1935, the surface plant comprised two 53 h.p. horizontal return tubular boilers, a 360-cubic-foot steam-driven compressor, and an 8- by 6-inch Ingersoll-Rand single-drum hoist. In 1936, a new plant was installed, which included 3 Polar Atlas Diesel engines of 295 h.p. each, with two being connected directly to 200 K.W., 440 volt generators. The third drove a 1,325 cubic-foot Ingersoll-Rand compressor. An Ingersoll-Rand double-drum electric hoist was also installed.

An 100 ton per day cyanide mill with a 4- by 12 foot Hadsel Western mill, two 8- by 24-foot Dorr thickeners, five 14- by 14-foot Dorr agitators, two Oliver filters and a Merrill-Crowe precipitation unit was 70% constructed by the end of 1936, and completed in 1937. A wooden headframe and a 30,000 gallon steel water tank were also constructed. In

1937 a 185 h.p. Ruston-Hornsby Diesel engine driving a 750 cubic-foot Belliss and Morcom compressor was added to the plant. A 94 K.V.A., 480 volt General Electric generator was added during 1938.

By 1939, the mill with a rated capacity of 100 tons per day had a daily operating average of 111 tons per day.

A new electric unit, consisting of a model 37C Fairbanks-Morse, 360 h.p. Diesel engine, and a 480-volt, 60-cycle, 300 K.V.A. Westinghouse generator was installed in the plant in 1940.

The mill ceased operations on May 15, 1941, and the mine on September 30, 1941. The mine workings were allowed to flood.

Total production of ore, gold, and silver is given in Table VII.

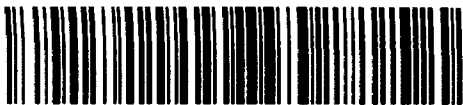
TABLE VII PRODUCTION STATISTICS

VALUES IN CANADIAN FUNDS

YEAR	'ORE RAISED-T'	'ORE DISCARDED-T'	'ORE MILLED-T'	GOLD CONTENT		SILVER CONTENT		'TOTAL VALUE \$
				'QUANTITY-OZ'	'VALUE-\$	'QUANTITY-OZ'	'VALUE-\$	
1937	'18,084	'1,025	'16,811	'3,863.878	'135,184.'	829	'357.00'	135,541.00
1938	'40,181	'-	'40,161	'13,959.011	'491,543.'	2,201	'953.00'	492,496.00
1939	'36,534	'-	'36,195	'12,607.734	'459,617.'	2,622	'1,085.00'	460,702.00
1940	'38,810	'-	'38,575	'11,488.502	'442,308.'	1,984	'737.00'	443,045.00
1941	'11,978	'-	'12,495	'3,439.876	'132,435.'	660	'245.00'	132,680.00
1942	'-	'-	'-	'5.296	'204.'	-	'-	204.00
1943	'-	'-	'-	'49.192	'1,894.'	3	'1.00'	1,895.00
Total	'145,587	'1,025	'144,237	'45,413.489	'1,663,185.'	8299	'3378	'1,666,563.00

## References

- Ontario Bureau of Mines - Annual Report, Vol.X, 1901, p.175.
- " " " " - Annual Report, Vol.XXV, 1916, p.103.
- " " " " - Annual Report, Vol.XXXVII, 1928, pt.1, p.85.
- " " " " - Annual Report, Vol.XLIV, 1935, pt.1, p.85.
- " " " " - Annual Report, Vol. XLV, 1936, pt.1, p.96.
- " " " " - Annual Report, Vol.XLVI, 1937, pt.1, p.119.
- " " " " - Annual Report, Vol.XLVII, 1938, pt.1, p.108.
- " " " " - Annual Report, Vol.XLVIII, 1939, pt.1, p.99.
- " " " " - Annual Report, Vol.XLIX, 1940, pt.1, p.105.
- " " " " - Annual Report, Vol. L, 1941, pt.1, p.29.
- " " " " - Annual Report, Vol. LI, 1942, pt.1, p.93.
- " " " " - Annual Report, Vol. LII, 1943, pt.1.
- " " " " - Annual Report, Vol.LIII, 1944, pt.1.



Summary of events in the history  
of the Golden Rose Mine, Afton Township

The Golden Rose deposit was discovered about 1897. In 1910, the Golden Rose Mining Company Ltd. was incorporated, with a capital stock of \$500,000.00 to develop the property. Some gold was obtained in 1915 and 1916. The company went into liquidation in 1919.

In 1927, Afton Mines Ltd. was incorporated, with a capital stock of \$2,000,000.00. Oscar Smith of Sudbury, who had purchased the property in 1922 was made an executive of the company. Afton Mines Ltd. did 270 feet of crosscutting on the 150 foot level of the mine.

The Consolidated Mining and Smelting Company of Canada, Ltd. optioned the Golden Rose property, in 1934. In 1935, the New Golden Rose Mines Ltd. was formed under the direction of Consolidated to supervise the development of the property. New Golden Rose Mines Ltd. went into voluntary liquidation early in 1942.

During the years 1935 to 1941, the mine and mill produced gold and silver valued at \$1,664,464.00. Although some gold and silver was recovered from the ore reserves in 1942 and 1943, the mine has been idle since September 30, 1941, and the 100 tons per day cyanide mill since May 15, 1941.

Prior to 1935, a two compartment vertical shaft went down 150 feet from a 200 foot long adit, which was 66 feet below the surface at the shaft. In 1935, the shaft was deepened to 416 feet. It was widened to three compartments, and pushed through to surface in 1936, and deepened to 735 feet in 1937. A 398 foot shaft inclined at 43° and collared at the 716 foot level of the first shaft was put down in 1940. No further development was done on the shafts.

From 1935, when New Golden Rose Mines Ltd. took over the mine until its closing in 1941, underground development took place on one adit, three sub-levels, and eight levels and included

drifting	11,776 feet
crosscutting	3,733 feet
raising	3,432 feet

A total of 40,969 feet of surface and underground diamond drilling was done.

The mill at the mine was constructed in 1936 and 1937 by the New Golden Rose Mines Ltd. It was rated at 100 tons per day, but in 1939 was operating at 111 tons per day.

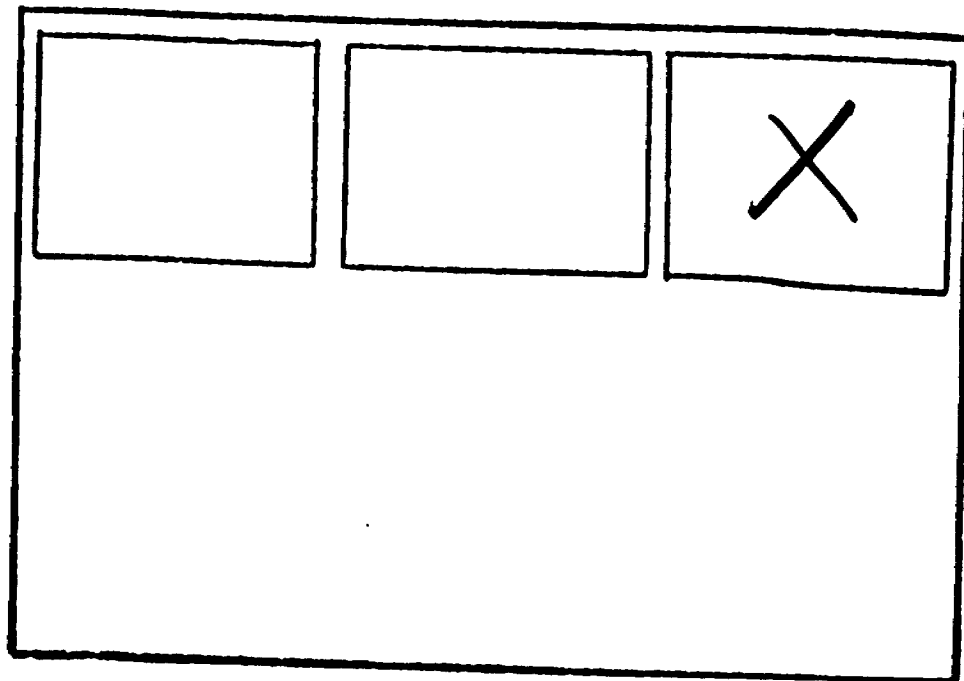
Total production figures for the mine for the period 1937-1943 are as follows:

ore raised	145,587 tons
ore discarded	1,025 tons
ore milled	144,237 tons
gold content	45,413.489 oz.
value	\$1,663,185.00
silver content	8,299. oz
value	\$3,378.00
total value of gold and silver	\$1,666,563.00

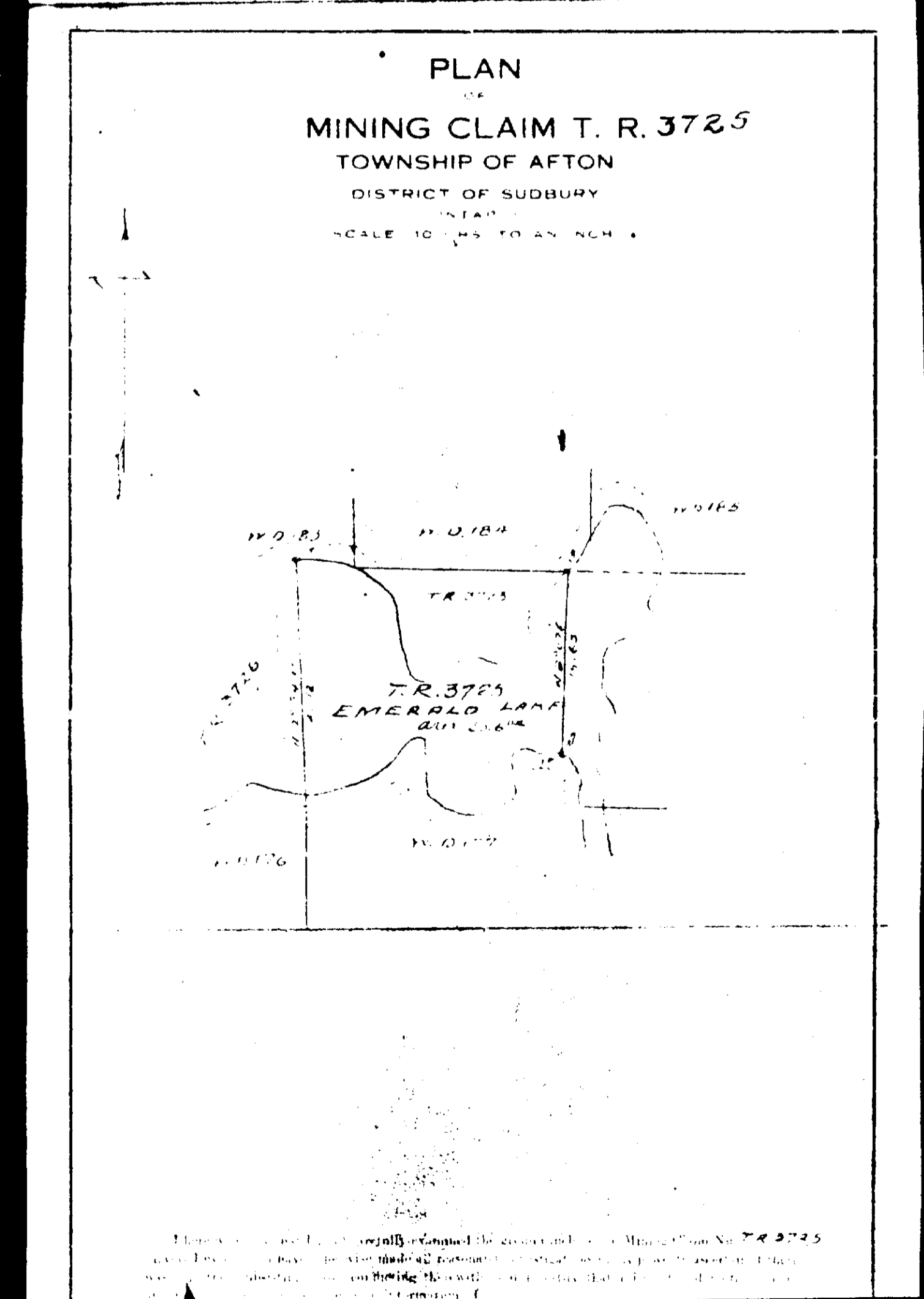
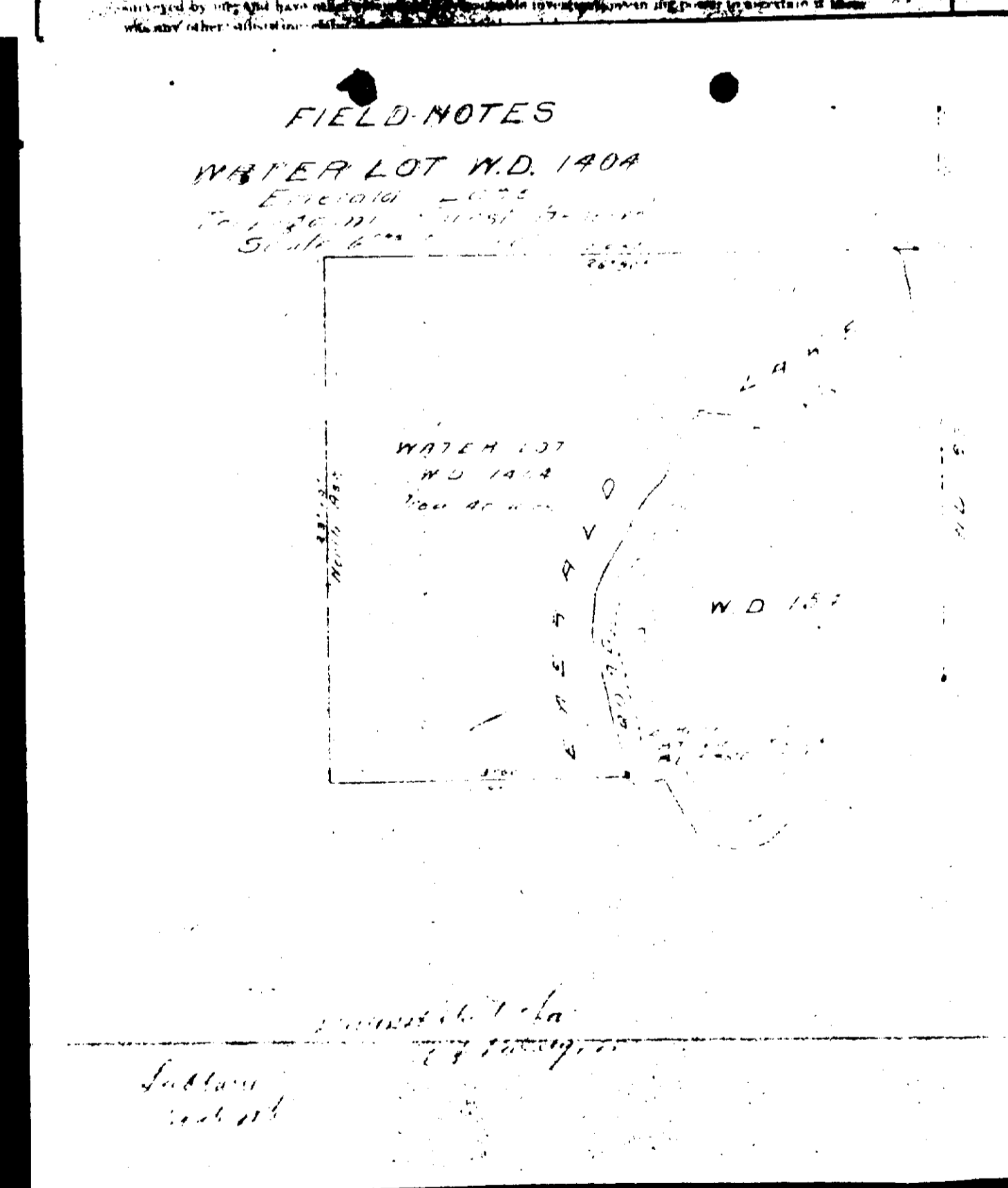
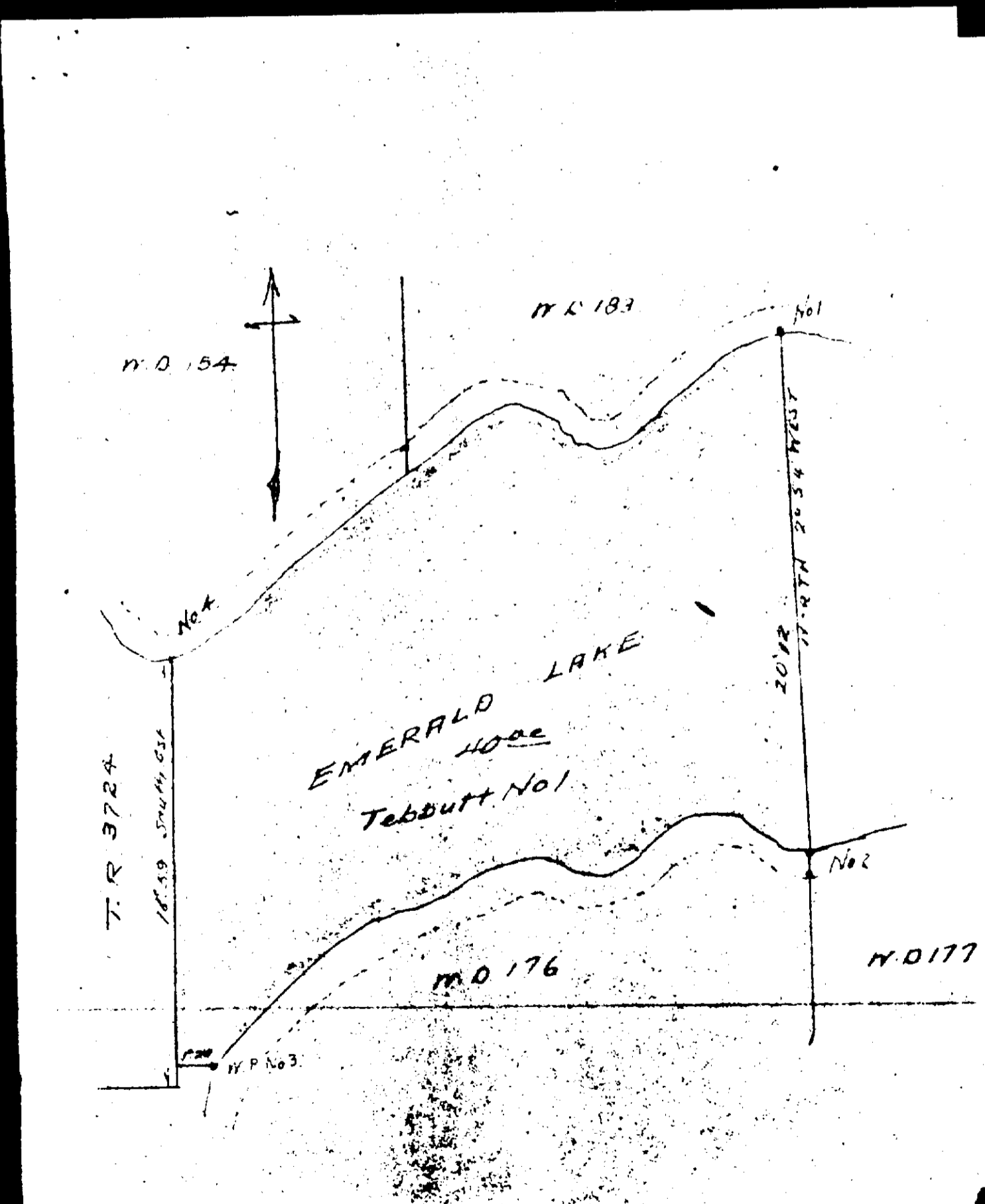
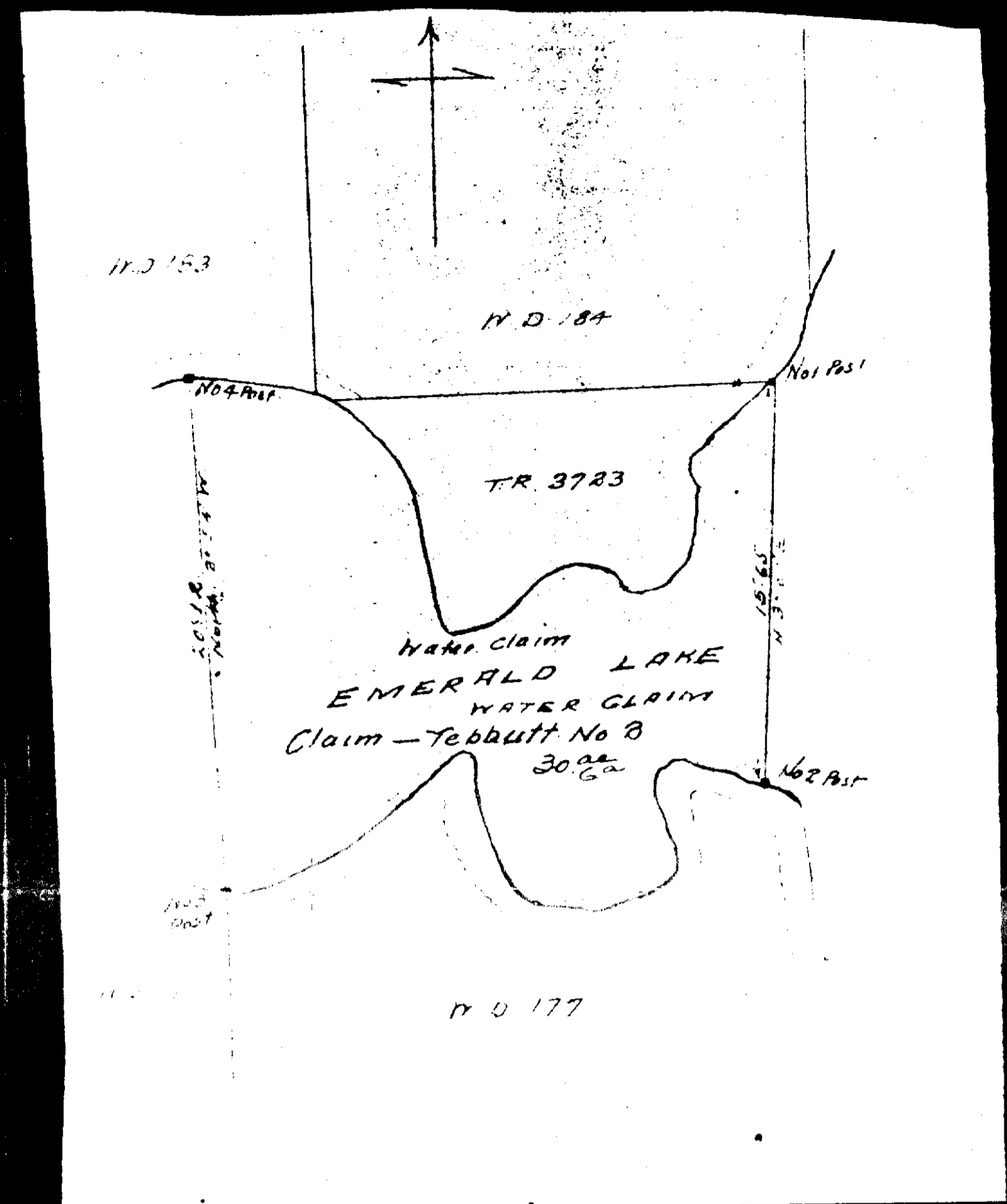
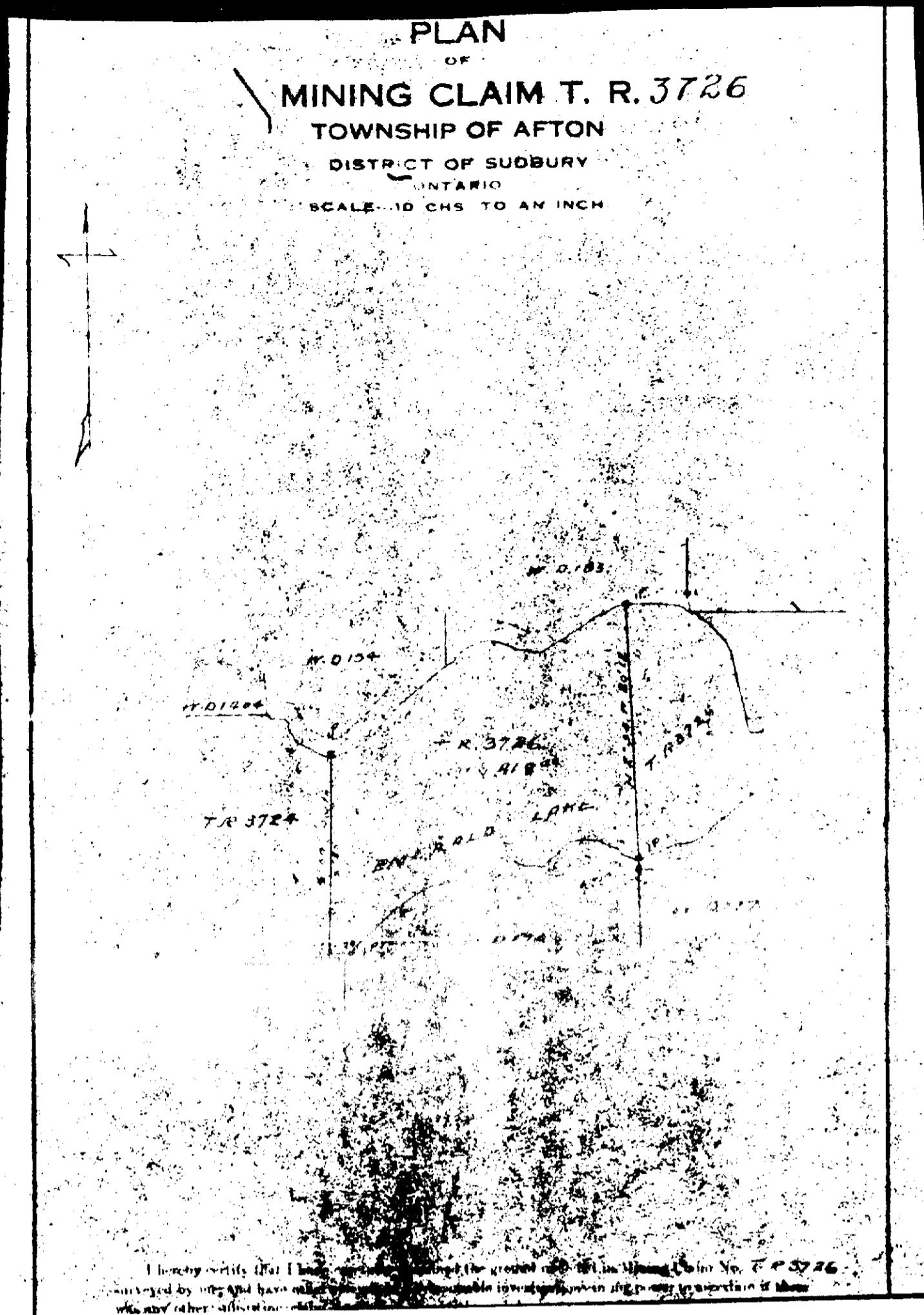
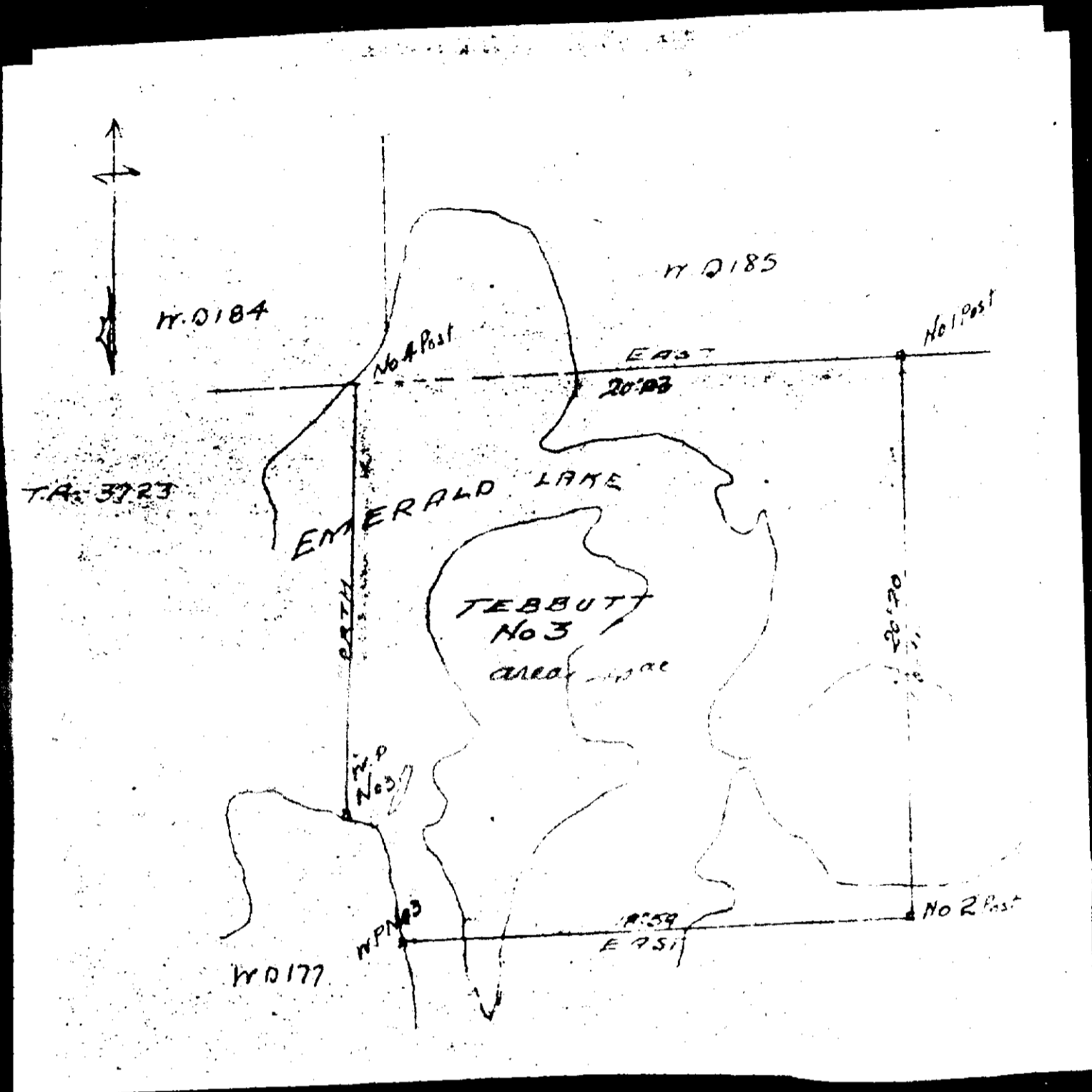
The above information comes from the Annual reports of the Ontario Department of Mines for 1901, 1916, 1928, and 1935 to 1944.

SEE ACCOMPANYING  
MAP(S) IDENTIFIED AS  
AFTON-0021-B1 #1

LOCATED IN THE MAP  
CHANNEL IN THE FOLLOWING  
SEQUENCE (X)







AFTON-0021-B1 #1

