



41116SE0019 0011D1 VOGT

010

Diamond Drilling

Township of VOGT

Report N^o: 13

Work performed by: Malartic Gold Fields Limited

Claim N ^o	Hole N ^o	Footage	Date	Note
T. 36317	1	49'	June/56	
	2	75'	June/56	
	3	71'	June/56	
	4	57'	June/56	
	5	50'	June/56	
	6	49'	June/56	

6 DH 351 FT

Notes:

MAIARTIC GOLD FIELDS LIMITED

56L

Property: Austin Bay, Vogt Twp., Ont.
D. D. Hole No. 1.

Total Depths 49' Bearing: South Date: June 1956
Dip at Collar: -45° Location: L 10, 0 + 108 Logged by: C. K. Wilton

0 - 49 Tuff: grey green to mauve grey, fine grained, low pyrite, pyrrhotite and chalcopyrite mineralization. Fine chalcopyrite at 20.8, 22.6, 24.3, 25.7, 26.2, 26.5, 26.7, 26.9, 27.2, 27.9, 28.2, 28.5 - 29.2, 33.4, 33.7, 33.9 - 39.7, 40.5 - 41.5, 42.2, 43 - 43.7, 44.7, 45.9, 46.9 and 49.0
7.8 2" of irregular white quartz.
49 End of D. D. Hole No. 1

		<u>SAMPLES</u>				
<u>From</u>	<u>To</u>	<u>Length</u>	<u>Ozs. Gold per ton</u>	<u>Ozs. Silver per ton</u>	<u>% Copper</u>	<u>% Nickel</u>
34.0	39.0	5.0	.035	0.43	0.20	Nil

Property: Austin Bay, Vogt Twp., Ont.
D. D. Hole No. 2.

Total Depths: 75.0° Bearing: South Date: June 23, 1956
Dip at Collar: -45° Location: L 10, 0 + 70N Logged by: C. K. Wilton

0 - 56.1 Andesite: grey green, fine grained, massive and hard.
56.1 - 75.0 Tuff: grey green, with occasional light mauve grey siliceous fragments. Very fine chalcopyrite at 56.7, 59.6, 60.2, 60.6, 61.3, 61.8, 62.0, 62.1, 62.4, 63.0, 65.1, 65.5, 65.7, 65.9, 66.0, 67.2, 72.6, 73.8.
59.0 - 61.0 8% Coarse pyrrhotite.
75 End of Hole # 2.

<u>Sample No.</u>	<u>SAMPLES</u>						
	<u>From</u>	<u>To</u>	<u>Length</u>	<u>Ozs. Gold per ton</u>	<u>Ozs. Silver per ton</u>	<u>% Copper</u>	<u>% Nickel</u>
D4517	59.6	63	3.4	.02	0.10	Trace	.01
D4518	65.	67.2	2.2	.02	0.16	0.16	Trace

MALARTIC GOLD FIELDS LTD.

Total Depth: 77'. Bearing: North. D.D. Hole: #3
 Dip at collar: -11° Location: L 10, o-70N. Property: Austin Bay, Lake Timagami,
 Vogt Twp., Ontario.
 Logged by: C. K. Wilton Date: June 23, 1956.

0 - 31.8 Andesite - dark grey, fine grained, massive, hard.
 5.9 - 11.6: light grey, siliceous alteration with fine
 chalcopryite at: 6.7, 6.9, 7.0, 7.3, 7.8, 8.9,
 9.8; 10.1, 11.2, 11.6.
 10.1 : 1/4" white quartz with chalcopryite, pyrite and
 pyrrhotite adjacent.
 26.5 - 27.0: light grey siliceous alteration.
 29.2 : 1/2" seam of black material with CO₃ breccia.

31.8 - 71.0 Tuff - siliceous, mauve-grey, fine grained, 5-10% sulphides,
 mainly pyrrhotite with minor pyrite & chalcopryite.
 Chalcopryite occurs at: 36.4 to 36.7, 41.8, 42.5,
 46.1, 49.6, 52.1 - 52.3, 53.2, 54.8, 55.7, 59.5-60.0,
 61.8, 64.5-65.2.
 42.7 - 42.9 : massive pyrrhotite with minor pyrite.
 60.7 - 61.3 : grey quartz.

SAMPLES

<u>From</u>	<u>To</u>	<u>Length</u>	<u>oz. Au/ton</u>	<u>oz. Ag./ton</u>	<u>% Cu</u>	<u>% Ni</u>
6.6	11.6	5.0	.02	.22	.33	.01
52.0	56.0	4.0	.02	.12	.14	Trace
59.4	62.0	2.6	.02	.31	.84	.01

00000

Total Depth: 49' Bearing: South D.D. Hole: #6
 Dip at collar: -45° Location: L 10, 0-52S Property: Austin Bay, Lake Timagami,
 Vogt Twp., Ontario.
 Logged by: C.K. Wilton Date: June 24, 1956.

0-5.7 Tuff: mauve-grey, fine grained, siliceous, 1% pyrrhotite,
 pyrite with occasional chalcopryite.

5.7 - 49 Andesite: dark grey-green, fine grained, massive, occasional
 low foliation at 70°.
 Lost core at: 15.2, to 16.0; 37.7-38.7; 41.5-42.2.

NO SAMPLES

MALARTIC GOLD FIELDS LTD.

Total Depth: 57' Bearing: South. D. D. Hole: #4
 Dip at collar: flat Location: L 16, 0-75S Property: Austin Bay, Lake Timagami,
 Vogt Twp., Ontario.
 Logged by: C.K. Wilton Date: June 24, 1956.

- 0 - 22.4 Andesite - dark grey-green, fine grained, massive.
 4.5 - 18.0 : 5% pyrrhotite, pyrite and occasional chalcop-
 pyrite particularly at: 4.9, 6.3, 6.7, 11.7,
 13.9, 16.4.
 19.0 - 22.2 : light green epidote alteration with low,
 irregular grey and white quartz.
- 22.4 - 29.5 Tuff - mauve-grey, fine grained, siliceous, 5-10% pyrrhotite
 and pyrite. Occasional chalcopyrite at: 23.7,
 23.9, 24.8 & 26.4,
- 29.5 - 57.0 Andesite - as above. Lost core at 52.3 - 53.8.

SAMPLES

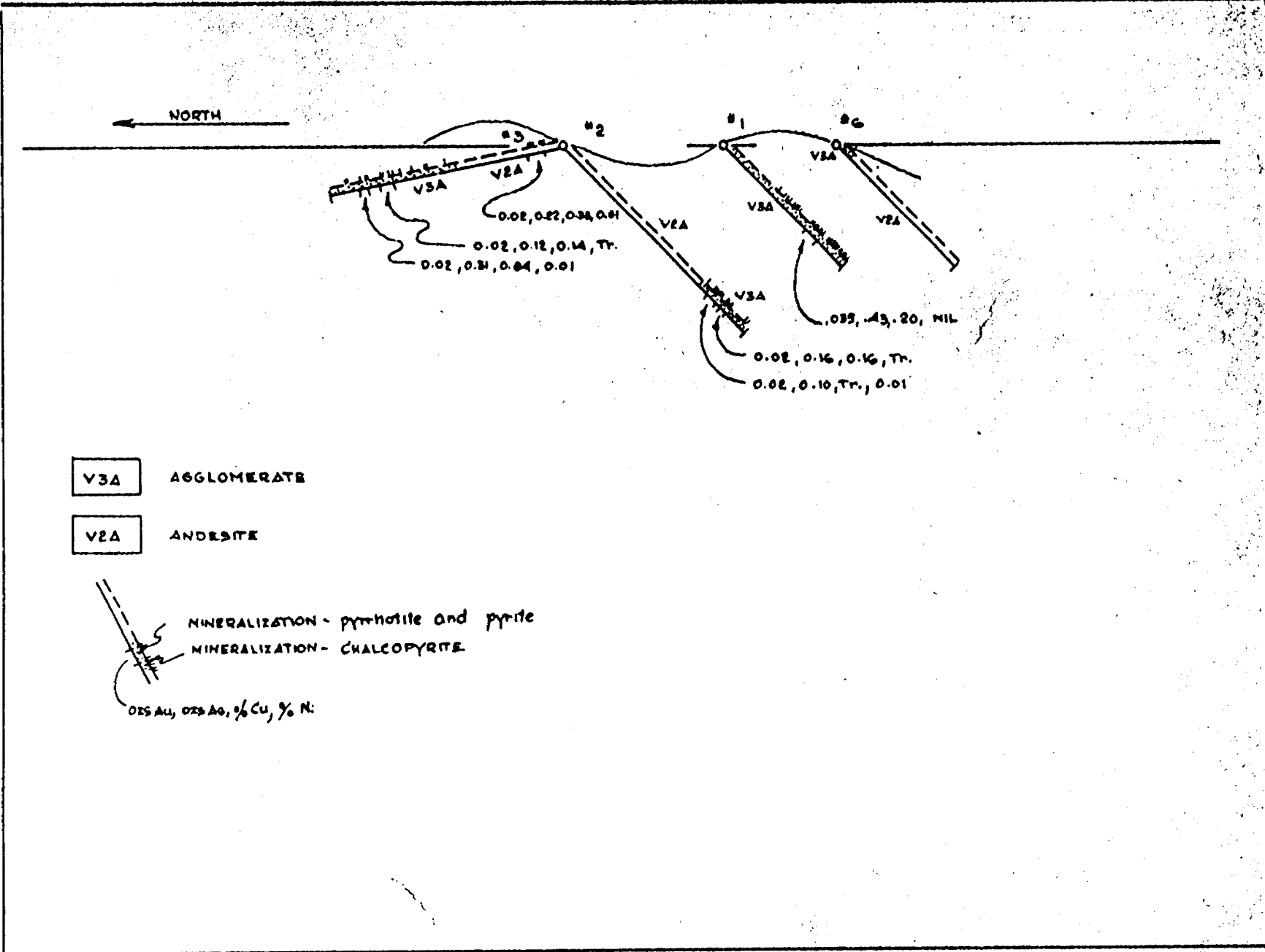
<u>From</u>	<u>To</u>	<u>Length</u>	<u>oz. Au./ton</u>	<u>oz. Ag/ton</u>	<u>%Cu</u>	<u>%Ni</u>
23.5	26.5	3.0	.01	.11	.39	Trace

oooooooooooo

Total Depth: 50'. Bearing: South. D. D. Hole: #5
 Dip at collar: -45° Location: L 16, 1-20S Property: Austin Bay, Lake Timagami,
 Vogt Twp., Ontario.
 Logged by: C. K. Wilton Date: June 24, 1956.

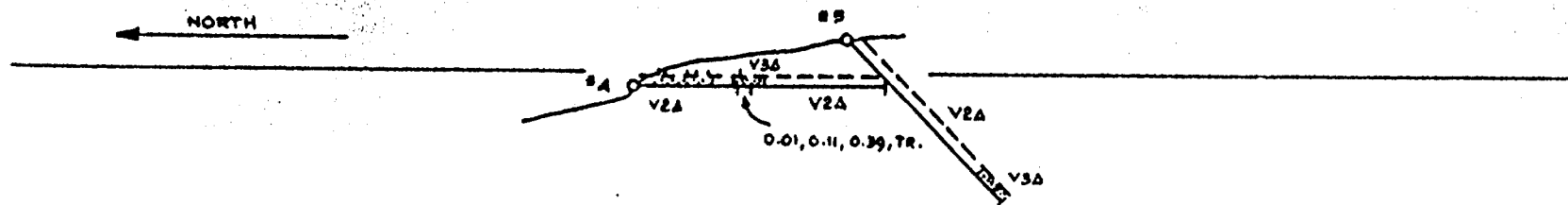
- 0 - 41.5 Andesite - grey-green to dark grey.
 1.7 - 2.4 : light green, silicified.
 Lost core: 7.1-8.1; 9.2-10.0; 19.5-20.0.
 39.0 - 40.4: low epidotization.
 40.9 : 1/2" grey quartz at 45° with minor pyrrhotite
 and chalcopyrite.
- 41.5 - 50.0 Tuff - mauve-grey, fine grained, siliceous, 3-5% pyrrhotite
 and pyrite.

731



MALARTIC GOLD FIELDS LTD.		MAPING
TEMAGAMI AREA - AUSTIN BAY GROUP - VOGT TWP, ONT.		6
DRAWN BY: C.K. WILTON	DIAMOND DRILL HOLES SECTION - WEST SHOWING	SECTION NO.
TRACED BY: A.W.	SCALE: 1" = 40'	DATE: JUNE 1996
		1

644



LEGEND

V3A AGGLOMERATE

V2A ANDESITE

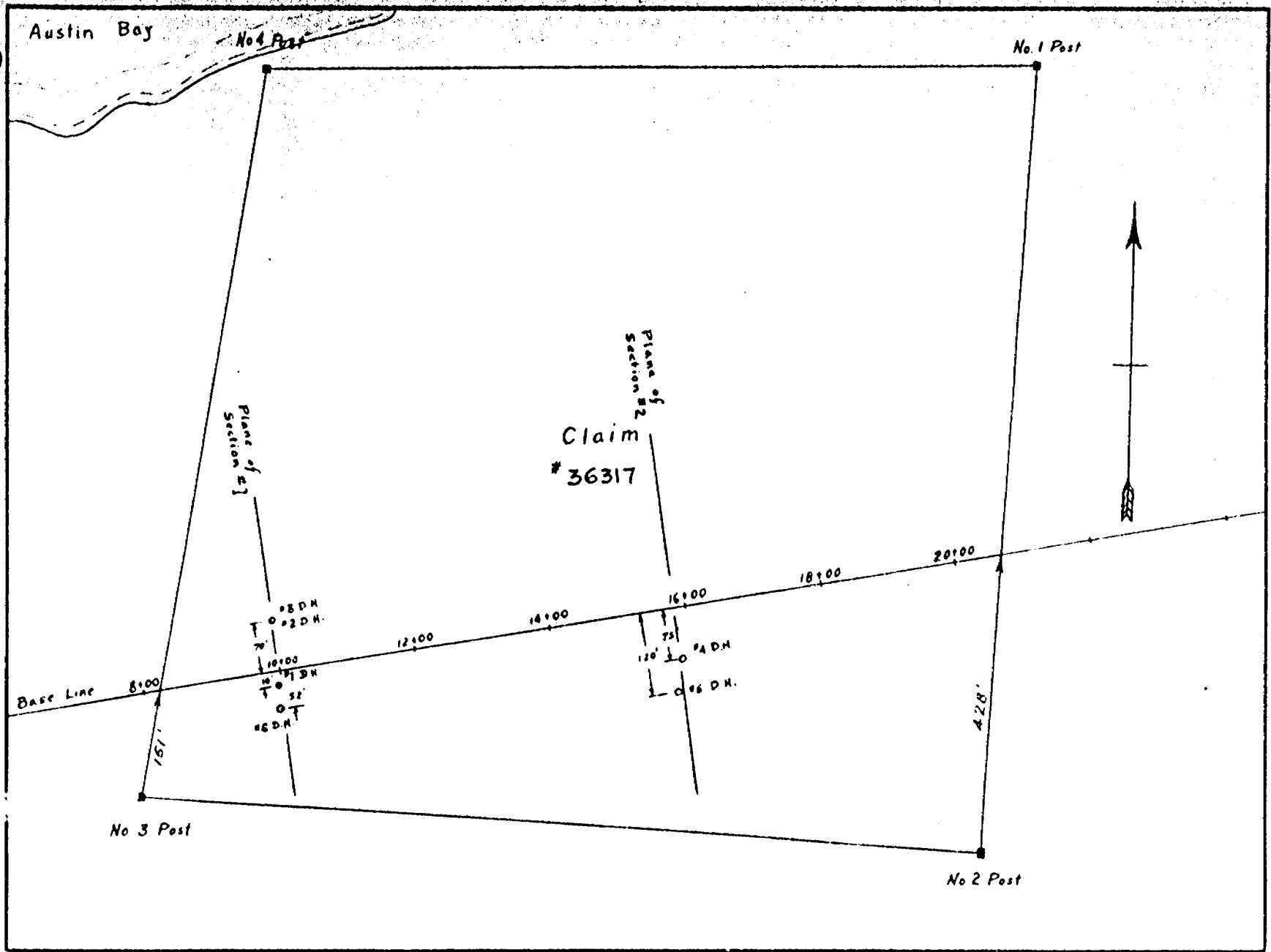
MINERALIZATION - PYRROTHITE AND PYRITE

MINERALIZATION - CHALCOPYRITE

0.28 AU, 0.28 AG, % CU, % N:

	MALARTIC GOLD FIELDS LTD.		MAP NO
	TEMAGAMI AREA - AUSTIN BAY GROUP - VOGT TWP, ONT.		7
DRAWN BY: C.K. WILTON	DIAMOND DRILL HOLES SECTION - EAST SHOWING		SECTION NO
TRACED BY: A.W.	SCALE 1" = 40'	DATE: JUNE 1956	2

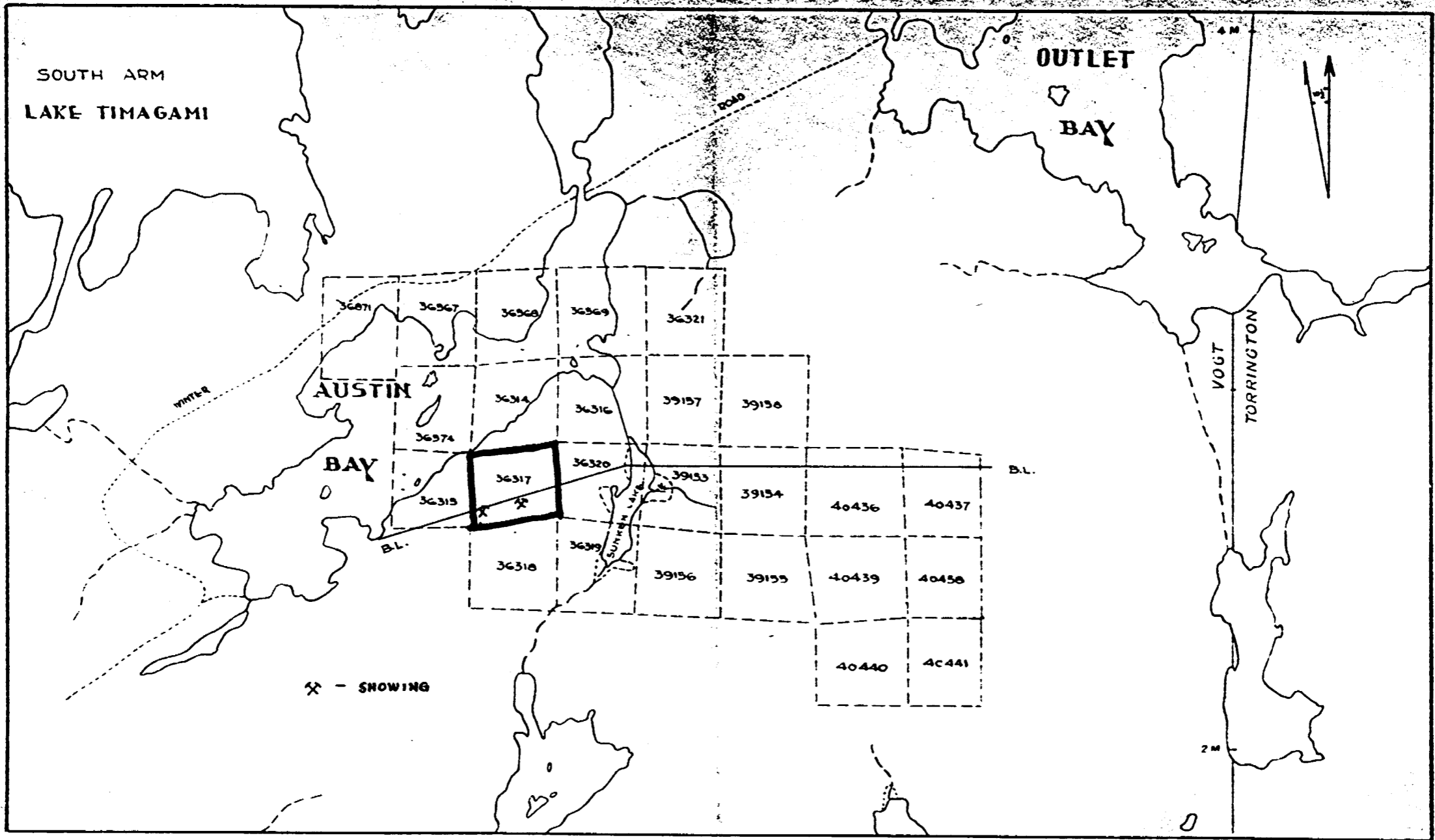
672



	MALARTIC GOLD FIELDS LTD.		MAP No.
	Austin Bay Area, Vogt Twp., Ontario		5
Drawn by R. A. Cameron	PLAN OF DIAMOND DRILL HOLES		BLOCK No.
Traced by R. A. Cameron	SCALE: 1" = 200'	COORD.:	NORTH:

36317

615



BASE: C.F.B. AID PHOTO MOJAC	MALARTIC GOLD FIELDS LTD.	MAP NO.
	AUSTIN BAY AREA, VOGT TWP. ONT.	1
DRAWN BY: R.A. CAMERON	1" = 1/4 mile SKETCH OF CLAIM GROUP	BLOCK NO.
TRACED BY: A.V.	SCALE: 4" = 1 MILE	COORD.: NORTH