



41116SE0021 0012B1 CLEMENT

010

Diamond Drilling

Township of CLEMENT

Report NO: 13

Work performed by: C. Niemetz

Claim NO	Hole NO	Footage	Date	Note
TR 49441	C-1	566'	June/62	
	C-2	702'	July/62	
		<u>Total 2 DH</u>	<u>1268'</u>	

Notes:

DIAMOND DRILL RECORD

At Home

PROPERTY Chris Niemetz HOLE No. C1
 SHEET NUMBER 1 SECTION FROM 0.0 TO 566.0' STARTED June 4, 1962
 LATITUDE TUQUU1 DATUM _____ COMPLETED No
 DEPARTURE CLEMENT BEARING S 15' W ULTIMATE DEPTH ?
 ELEVATION _____ DIP - 50° PROPOSED DEPTH ?

DEPTH FEET	FORMATION	SAMPLE NO.	FROM	TO	WIDTH	ASSAY VALUES		
0.0	Diabase: medium grained, even texture, mottled grey color, very massive uniform, diabasic texture, 60% matrix (pyroxene amphibole)							
	29.0-57.0 fine grained even texture							
	39.0-40.0 ground core							
	44.0-44.5 ground core							
	57.5-58.0 ground core							
	58.6-60.0 felsite dikelet 50% quartz 50% pink feldspar contacts @ 30° wently steeped.							
	66.0-67.0 sharp slip part to core							
	67.0-68.0 ground core							

ASSESSMENT WORK

Rec'd from M. J. REEVE

H. J. BURRY

DATE June 27, 1962

H. J. BURRY
Resident Geologist

TPC NEW LIBEARD
 DRILLED BY Chris Niemetz SIGNED J. Sharpley

DIAMOND DRILL RECORD

PROPERTY Chris Niemetz HOLE No. C1
 SHEET NUMBER 2 SECTION FROM _____ TO _____ STARTED _____
 LATITUDE _____ DATUM _____ COMPLETED _____
 DEPARTURE _____ BEARING _____ ULTIMATE DEPTH _____
 ELEVATION _____ DIP _____ PROPOSED DEPTH _____

DEPTH FEET	FORMATION	SAMPLE NO.	FROM	TO	WIDTH	ASSAY VALUES			
	108.0-108.5 ground core								
	111.5 2" mylonite shear @ 30° to core								
	148.0-148.8 ground core								
	167.0-168.0 sheared @ low angle to core; 50% qtz feldspar veining								
	163.0 1" pink feldspar groundmass.								
	189.0-190.0 ground core.								
	200.0-240.0 25% pink feldspar groundmass.								
	220.0-221.0 70% qtz & pink feldspar								
	271.0-317.0 striated diabasic texture.								

TPC NEW LISKEARD
 DRILLED BY Chris Niemetz SIGNED [Signature]

DIAMOND DRILL RECORD

PROPERTY Chris Niemetz HOLE No. C1
 SHEET NUMBER 3 SECTION FROM _____ TO _____ STARTED _____
 LATITUDE _____ DATUM _____ COMPLETED _____
 DEPARTURE _____ BEARING _____ ULTIMATE DEPTH _____
 ELEVATION _____ DIP _____ PROPOSED DEPTH _____

DEPTH FEET	FORMATION	SAMPLE NO.	FROM	TO	WIDTH	ASSAY VALUES			
	317.0 - 333.0 fine grained texture, dark grey color								
	317.0 - 322.0 altered pyromic								
	358.0 trace chalcopyrite								
	361.0 - 362.0 sheeted @ 30° 1/4" quartz vein.								
	370.0 - 406.0 not cored bullnosed.								
	411.0 - 438.0 bullnosed								
	438.0 - 440.0 white dike								
	446.0 - 453.0 coarse grained								
	453.0 - 472.0 bullnosed								
	477.0 - 507.0 bullnosed								

TPC NEW LIBEARD
 DRILLED BY Chris Niemetz SIGNED [Signature]

DIAMOND DRILL RECORD

PROPERTY Chris Niemetz HOLE No. C1
 SHEET NUMBER 4 SECTION FROM _____ TO _____ STARTED _____
 LATITUDE _____ DATUM _____ COMPLETED _____
 DEPARTURE _____ BEARING _____ ULTIMATE DEPTH _____
 ELEVATION _____ DIP _____ PROPOSED DEPTH _____

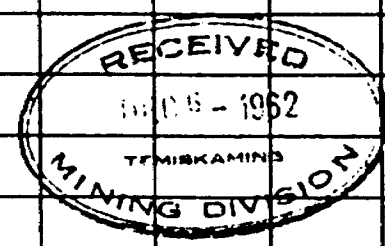
DEPTH FEET	FORMATION	SAMPLE NO.	FROM	TO	WIDTH	ASSAY VALUES		
	507.0-511.0 fine grained foliated @ 60° to core. fine traces of chalcopyrite							
566.0	End of hole							

TPC NEW LIBEARD
 DRILLED BY Chris Niemetz SIGNED [Signature]

DIAMOND DRILL RECORD

PROPERTY CHRIS NIEMETZ HOLE No. C - 2
 SHEET NUMBER 1 SECTION FROM 0.0 TO 702.0' STARTED July 5/62
~~672.0'~~ *28*
 LATITUDE _____ DATUM _____ COMPLETED July 27/62
 DEPARTURE _____ BEARING S20° W ULTIMATE DEPTH 702.0'
~~672.0'~~
 ELEVATION _____ DIP 73° PROPOSED DEPTH _____

TH FEET	FORMATION	SAMPLE NO.	FROM	TO	WIDTH	ASSAY VALUES			
	DIABASE: Medium grained; dark grey, color; very uniform & massive, diabasic texture.								
30.0 - 47.0	Slips @ low angle minor ground core.								
55.0 - 70.0	Dioritic rock; gradational contact; pink & white feldspar.								
118.0	2" dioritic vein with pink feld. @ 30°								
154.0 - 164.0	dioritic rock.								
174.0 - 174.3	sh'd breccia V. @ 60°; minor fault.								



TPC NEW LISKEARD
 DRILLED BY CHRIS NIEMETZ *Sharpley*

DIAMOND DRILL RECORD

PROPERTY _____ HOLE No. C - 2
 SHEET NUMBER 2 SECTION FROM _____ TO _____ STARTED _____
 LATITUDE _____ DATUM _____ COMPLETED _____
 DEPARTURE _____ BEARING _____ ULTIMATE DEPTH _____
 ELEVATION _____ DIP _____ PROPOSED DEPTH _____

DEPTH FEET	FORMATION	SAMPLE NO.	FROM	TO	WIDTH	ASSAY VALUES		
187.0 - 188.0	dioritic							
208.0 - 220.0	fine grained, dark grey, color; massive uniform diabase.							
220.0 - 223.0	slips, weakly sht'd @ low angle to core.							
223.0 - 235.0	similar to 208.0 - 220.0							
248.0 - 250.0	dioritic, salmon pink feldspar.							
252.0 - 260.0	dioritic.							
254.0	tr, py cpy, @ 20°							
255.0 - 258.0	fractured							
260.0 - 263.0	fracture, fault breccia, dioritic, minor tr, py, cpy.							
270.0 - 274.0	fault breccia; dioritic.							

TPC NEW LISKEARD

DRILLED BY CHRIS NIEMETZ

SIGNED _____

Sharpley

DIAMOND DRILL RECORD

PROPERTY _____ HOLE No. C - 2
 SHEET NUMBER 3 SECTION FROM _____ TO _____ STARTED _____
 LATITUDE _____ DATUM _____ COMPLETED _____
 DEPARTURE _____ BEARING _____ ULTIMATE DEPTH _____
 ELEVATION _____ DIP _____ PROPOSED DEPTH _____

DEPTH FEET	FORMATION	SAMPLE NO.	FROM	TO	WIDTH	ASSAY VALUES		
277.0 - 287.0	similar to 208.0 - 220.0							
300.0 - 350.0	coarse ophitic texture.							
356.0 - 366.0	fine grained; med. grey;							
	numerous 1/4" Qtz. cb veins @ steep angle.							
357.0	tr. py cpy @ 60°							
366.0 - 399.0	coarse ophitic texture.							
399.0 - 437.0	med. grained							
437.0 - 455.0	fine grained, dark grey.							
500.0	weakly magnetic							
573-634	573.0 - 634.0 bull nosed - no core.							
634-672	Diabase							
672-695	Bull nosed - no core							
672.0	END OF HOLE							
695-702	Diabase							
702	End of hole							

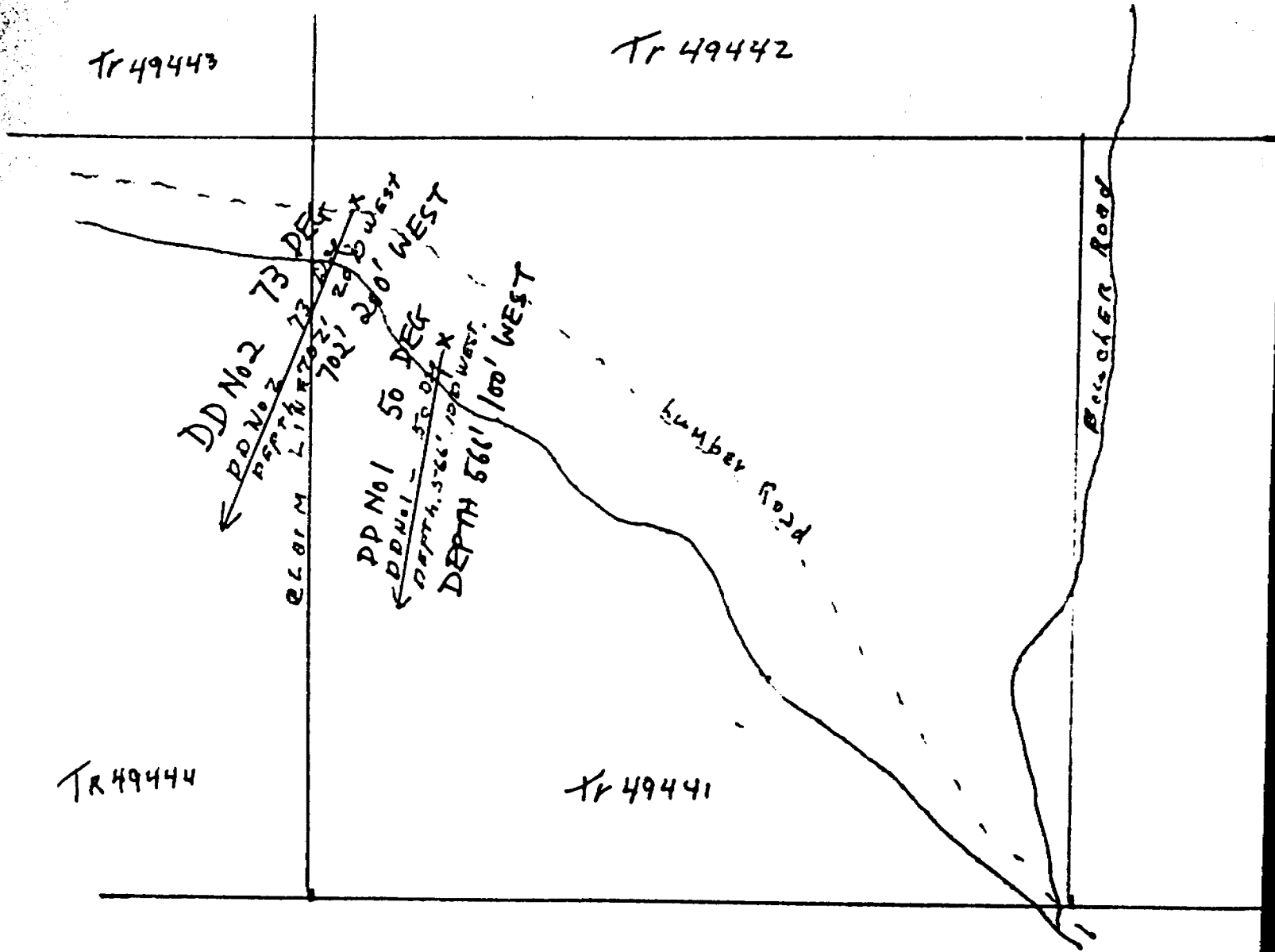
TPC NEW LISBEARD
 DRILLED BY CHRIS NIEMETZ SIGNED F. Sharpley

Tr 49443

Tr 49442

Tr 49444

Tr 49441

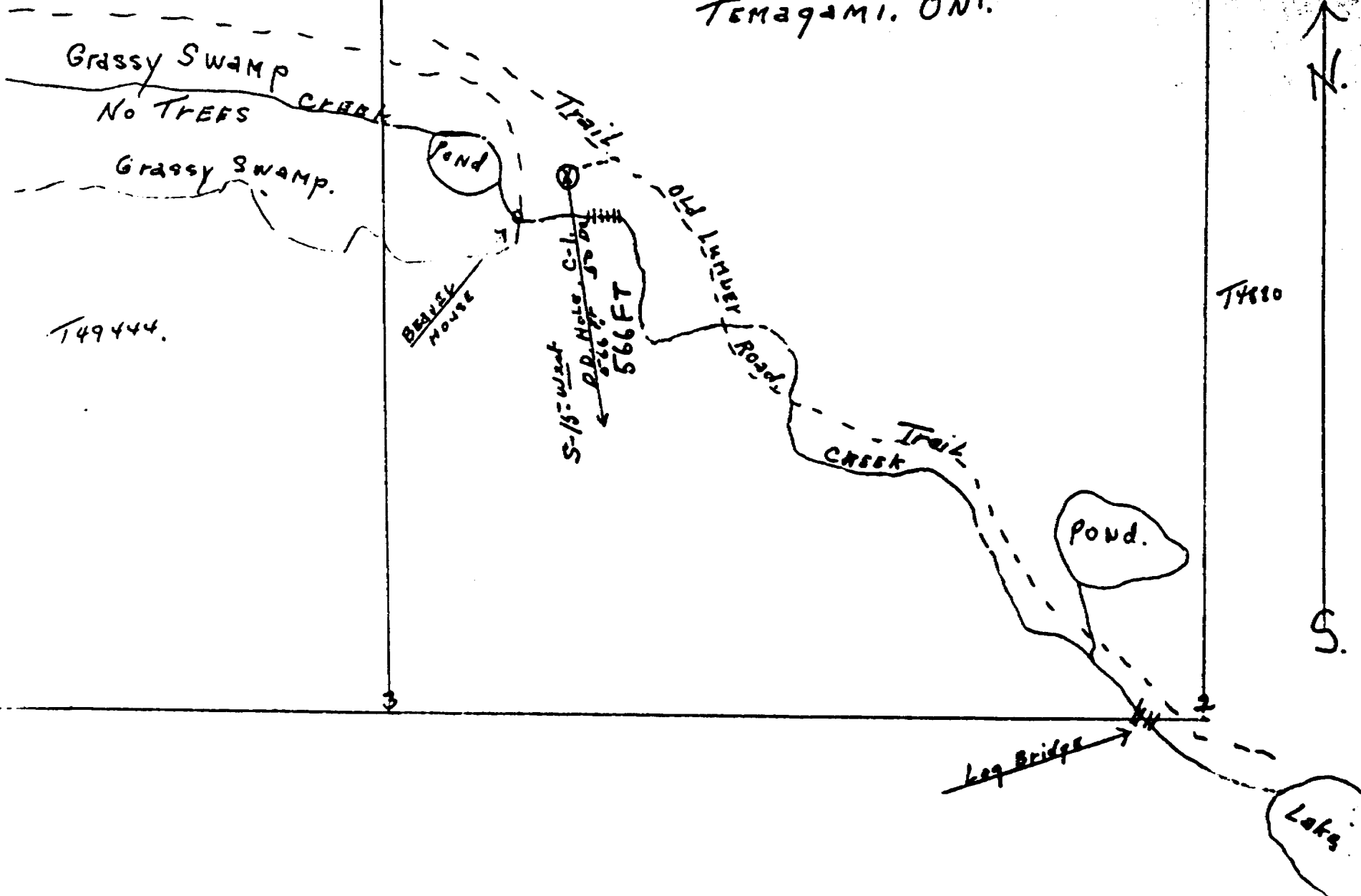


T49443

T49442

No 1

CLAIM. T. 49441.
CLEMENT, TWP.
TEMAGAMI, ONT.



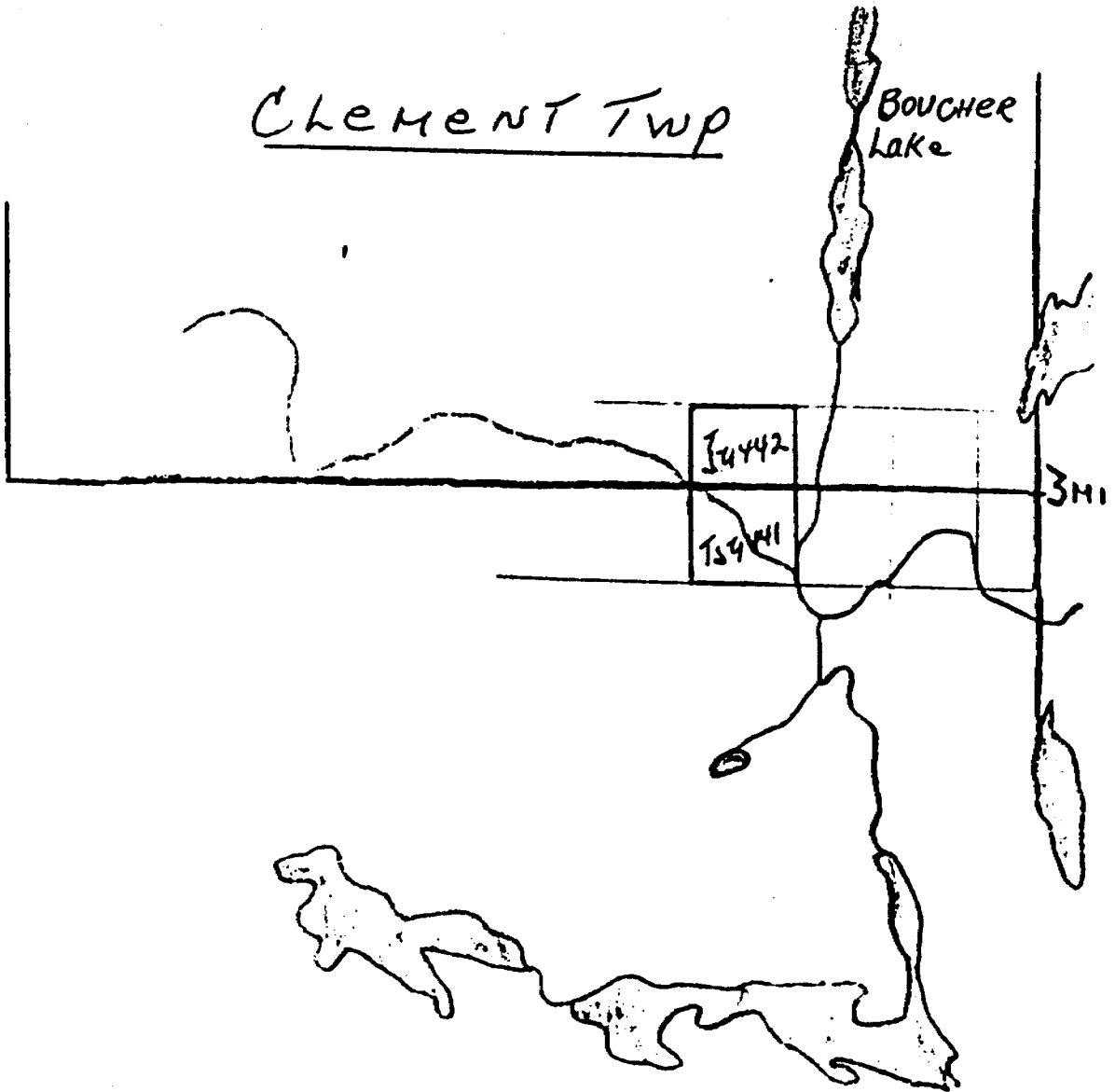
T49444.

T49440

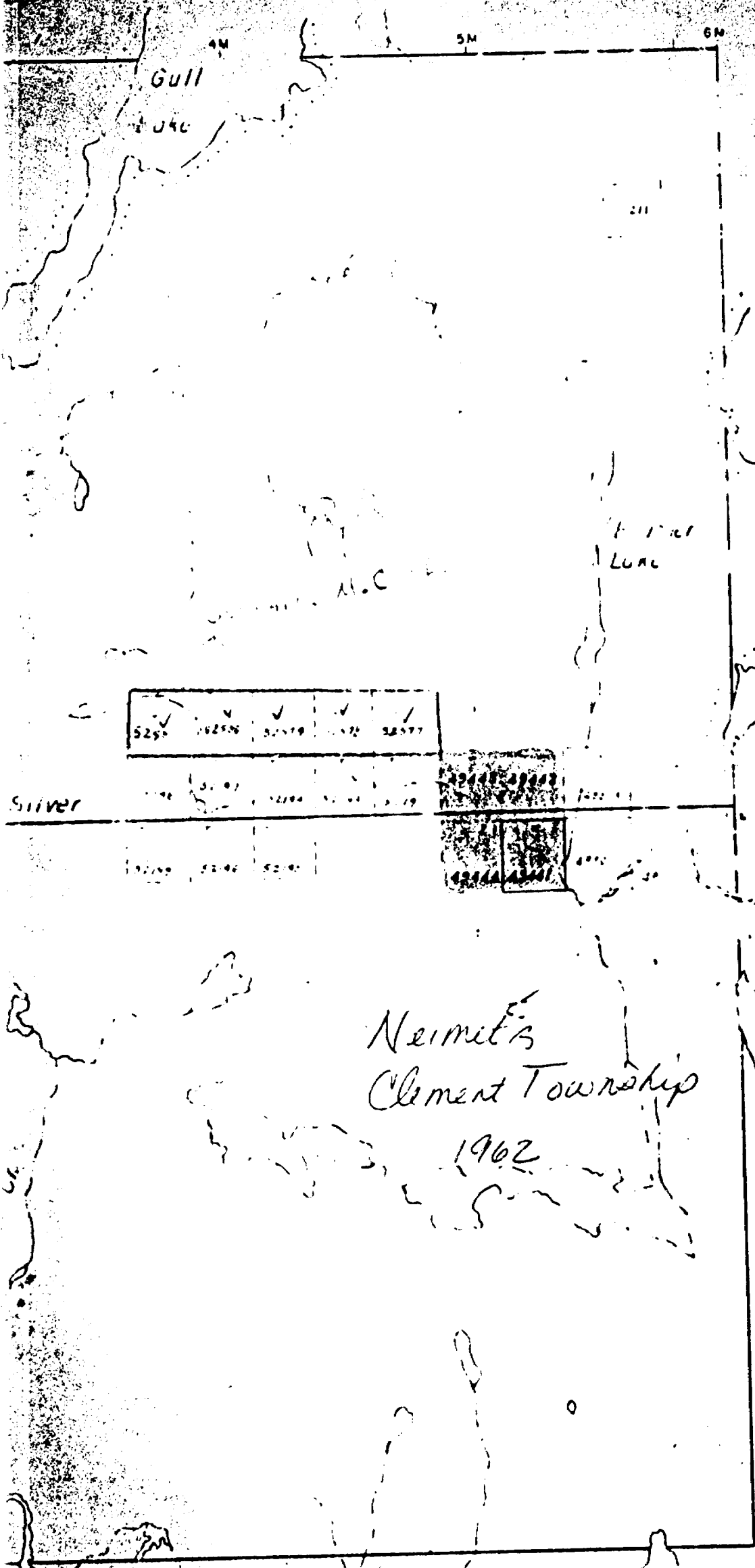


CLEMENT TWP

Boucher
Lake



Twp.



C

SCALE

PATENTED
CROWN
LEASES,
LOCATED
LICENSE
MINING
SURFACE
ROADS
IMPROVED
KING'S
RAILWAY
POWER
MARSH
MINES
CANCELLED

Vogt Twp.

400' Surf
rivers.

TIMAGA

Twp.