



41116SW0008 0012D1 CLEMENT

010

Diamond Drilling

Township of CLEMENT

Report NO: 14

Work performed by: R.J. COOK

Claim NO	Hole NO	Footage	Date	Note
T 43911	1	100'	Sept/59	
	2	48.3'	Sept/59	
	3	52.2'	Sept/59	

Total DH 3 200.5

Notes:

Sept. 10/59
 Sept. 15/59
 STARTED Sept 10/59
 COMPLETED Sept 15/59

HOLE NO. 1
 PROPERTY Clement & Macbeth Trps.
 Clement & Macbeth Trps.

DIP _____
 STRIKE _____
 DEPTH _____
 ELEV. _____

FOOTAGE		DESCRIPTION	CORE				
FROM	TO		SPL. NO.	FROM	TO	WIDTH	GRADE
0.0	40.0	Greenstone. Mostly massive. Some fracturing locally. Scattered sulphides.					
40.0	100.0	Diorite. Medium to coarse grained. Local fracturing. Scattered sulphides. End of DDM #1					
0.0	40.0	Greenstone. Mostly massive. Some fracturing. Locally scattered sulphides.					
40.0	100.0	Diorite. Medium to coarse grained. Local fracturing. Scattered sulphides.					
100.0		End of Hole # 1					

R. Cook

DIP 66° BEARING 145° LENGTH 48.3
 LAT. _____
 DEP. _____
 ELEV. _____

STARTED Sept 16/59
 COMPLETED Sept 21/59

HOLE NO. # 2
 PROPERTY Clement & MacBeth Trws
CLEMENT & MACBETH TRWS

FOOTAGE		DESCRIPTION	CORE				
FROM	TO		SPL. NO.	FROM	TO	WIDTH	GRADE
0.0	37.0	Greenstone. Mostly massive fractured locally. Some iron inclusions (magnetic).					
37.0	48.3	Arkose. Pink. Coarse feldspar crystals and/or fragments. Some fracturing.					
48.3		End DWH # 2					
0.0	37.0	Greenstone. Mostly massive. fractured Locally. Some Iron inclusions (magnetic)					
37.0	48.3	Arkose. Pink. Coarse felspar crystals and/or fragments. Some fracturing.					
48.3		End of Hole # 2					

R J Cook

Stripping and Trenching

G. S. Welsh	Matachewan	July 1 - Aug. 5/59
Gary Welsh	Matachewan	July 1 - Aug. 5/59
A. Pepin	Matachewan	July 1 - Aug. 5/59
John Duguay	Matachewan	July 1 - Aug. 5/59
Wm. Ennis	350 Wembley Dr., Sudbury	Aug. 24- Sept. 15/59
Victor Deroy	Milnet	Aug. 24- Sept. 6/59
H. Barry	Sudbury	Sept. 6- Sept. 15/59
H. Craig	Milnet	September, 1959
R. J. Cook	62 Richmond St. West Toronto	Aug. 24- Sept. 15/59

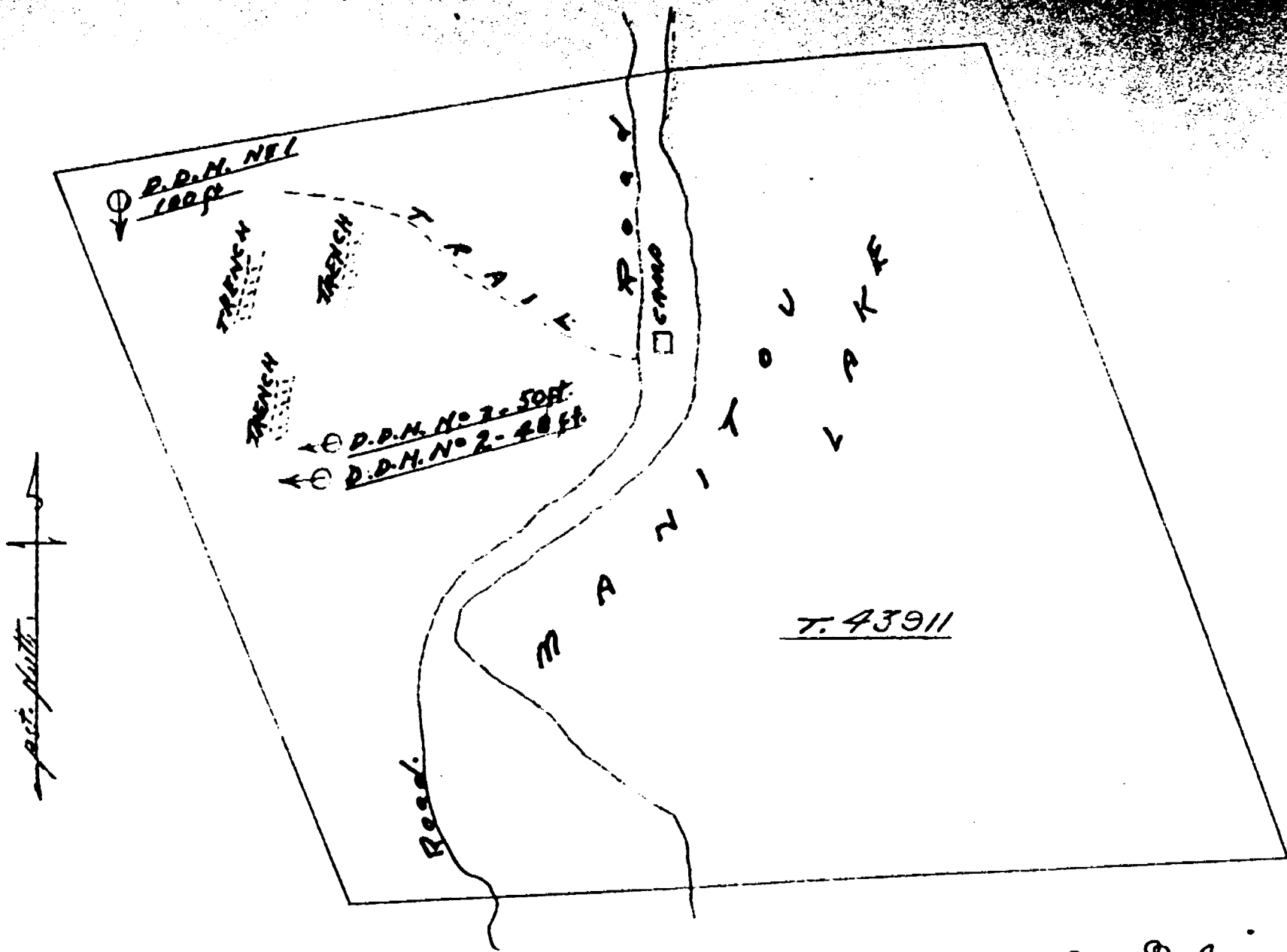
Total assumed days = 315

Total assumed days = 315

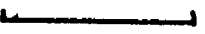
Assumed work per claim = $315 / 10 = 31.5$ days

Assumed work per claim = 315 = 31.5 days (?)

R J Cook



Macbeth and Clement Taps.

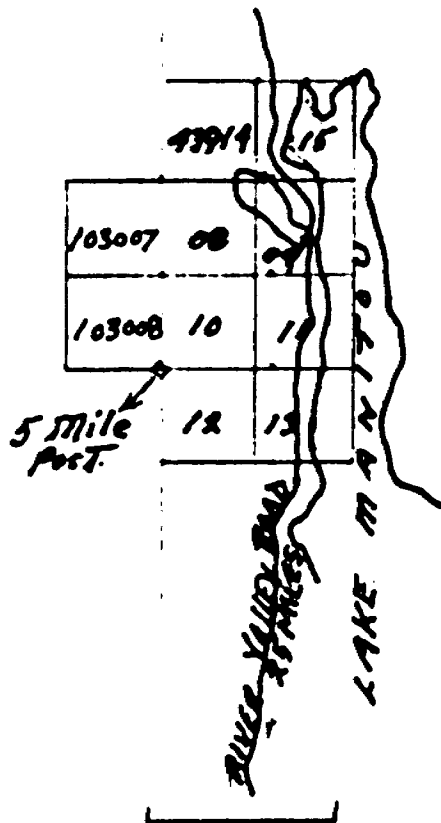
Scale:  200 ft. to an inch.

R. J. Cook, Geologist

Sept. 25, 1959

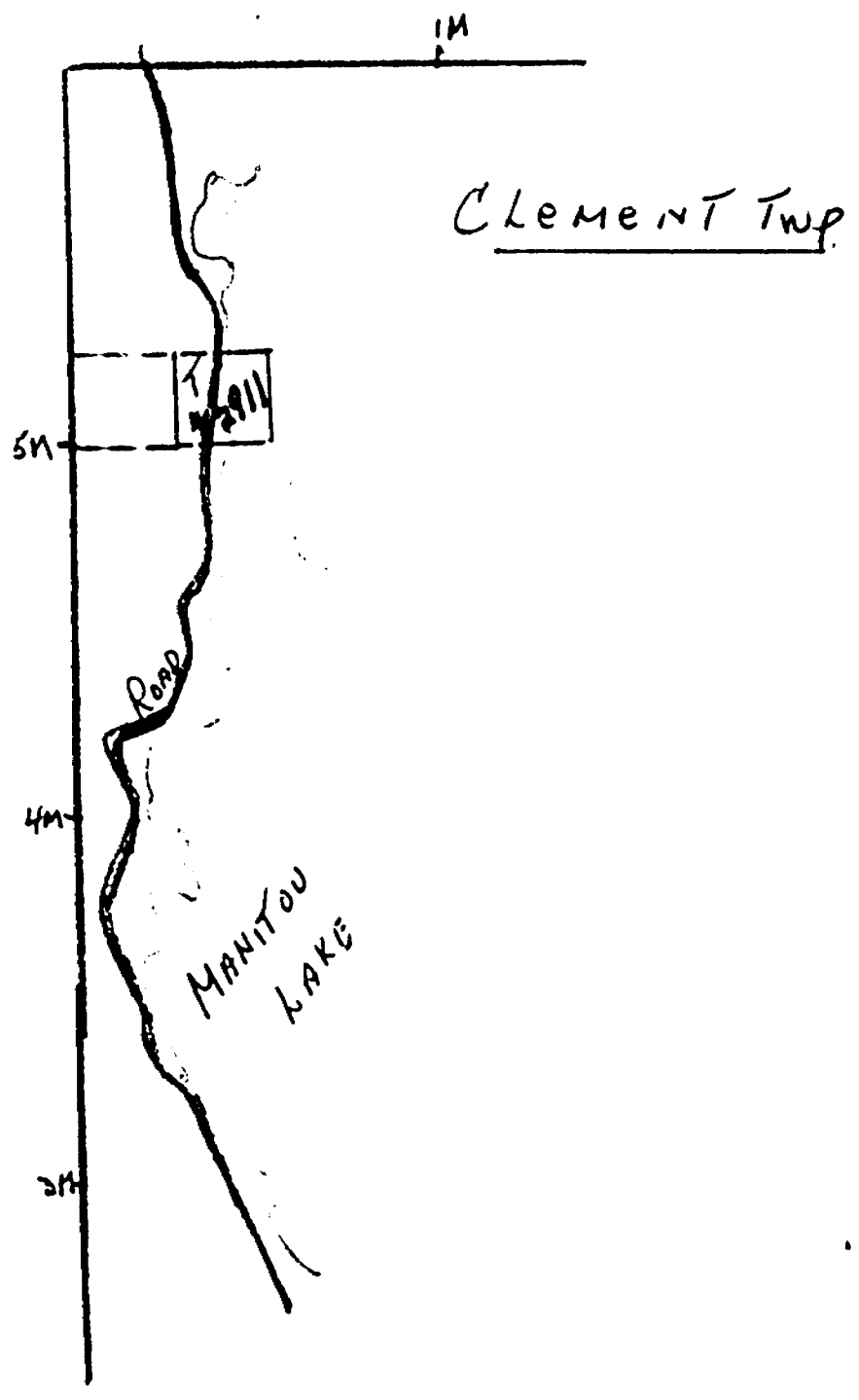
KEY MAP

Trp. Macbeth Trp. Clement



Scale: 40 ch. to an inch

R. J. Cook, Geologist
Sept 25, 1959



DIP 80 BEARING 190° LENGTH 52.2

STARTED Sept 24/59
 COMPLETED Sept 29/59

HOLE NO. 3
 PROPERTY Clement & MacBeth Druggs.
CLEMENT & MAC BETH TWBS

LAT. _____
 DEP. _____
 ELEV. _____

FOOTAGE		DESCRIPTION	CORE				
FROM	TO		SPL. NO.	FROM	TO	WIDTH	GRADE
0.0	46.8	Greenstone and iron formation. magnetic. Fractured locally.					
46.8	52.2	Arkose. Pink. Coarse feldspar crystals and/or fragments.					
52.2		End of O D H # 3					
0.0	46.8	Greenstone and iron formation. Magnetic. Fractured locally.					
46.8	52.2	Arkose. Pink coarse feldspar crystals and/or fragments.					
52.2		End of Hole # 3					

R. J. Cook