

Diamond Drilling



010

Township of PARDO

Report No: 11

Work performed by: PICKLE CROW GOLD MINES LTD.

Claim No	Hole No	Footage	Date	Note
S. 89975	A - N I	54' 606'	Jan/56 Feb/56	
S. 89974	B-0 C-0 B-4S	310' 174' 301'	Jan/56 Jan/56 Feb/56	
S. 85385	A-4S	44'	Feb/56	
S. 81603	C-7W	162'	Feb/56	
S. 81356	I-33S	482'	Mar/56	
S. 81357	M-33	47'	MAR/56 *	(1)
S. 81358	P-21-S	442'	Mar/56	
T. 42033	3	1095'	Sept/56	
S. 81593	7	1292'	Oct/56	
S. 81591	8	650'	Nov/56	
		<hr/>		
		13 DH	5659	

Notes:

(1) location only - no logs. LOGS FOUND

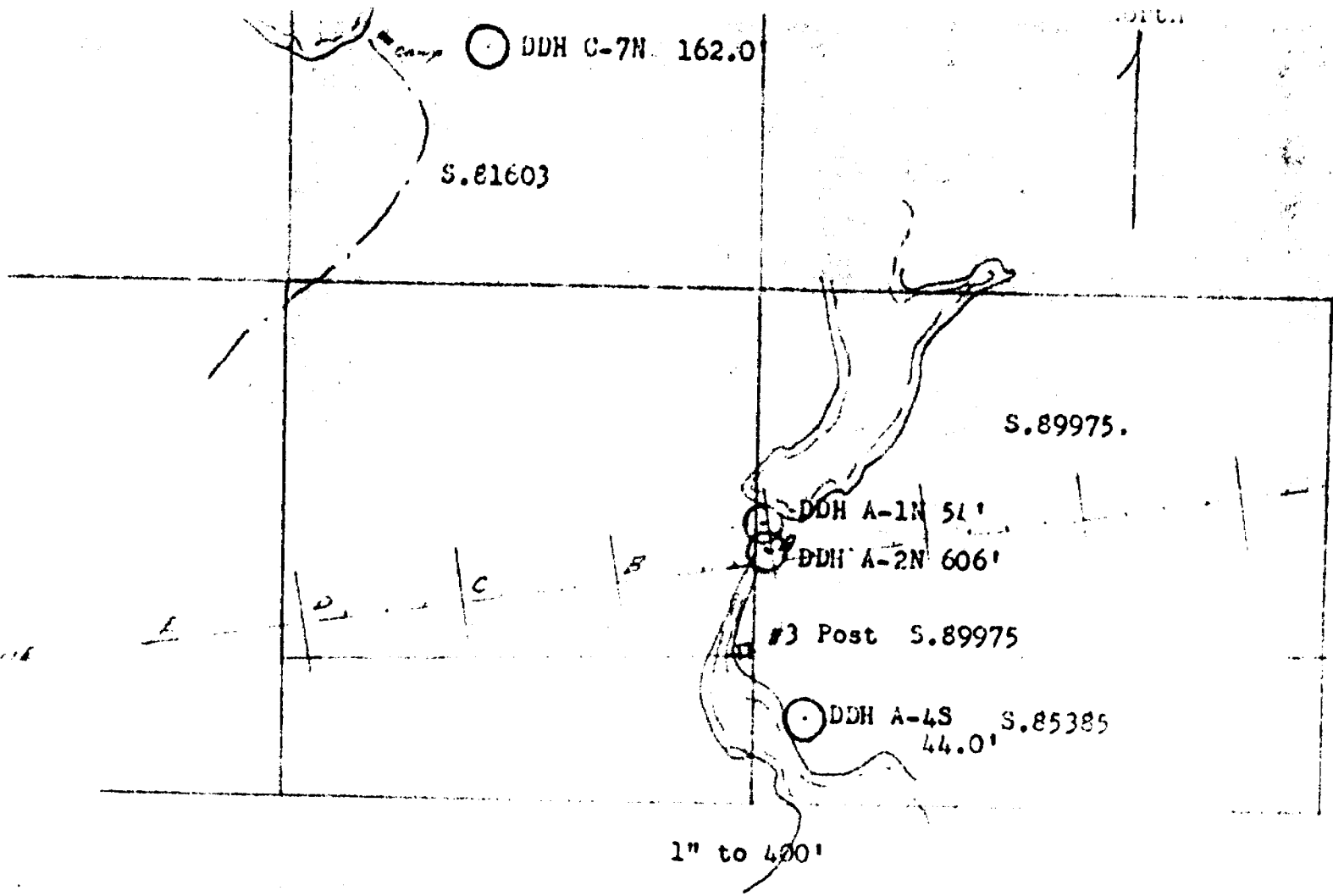
CLAIM 5 89975

# DIAMOND DRILL RECORD

Hole No. A-1N Sheet No. 1 Co-ordinates Collar 100' N Total Depth 54.0'  
 Property Pickle-Pardo Lat. . . . . Dep. . . . .  
 Drilled by Boyle Bros. Elev. Collar . . . . .  
 Date Began Jan. 9, 1956 Bearing Vertical  
 Date Finished Jan. 12, 1956 Angle 90°  
 Contractor's Footage 54.0' Working Place Claim S-85387 Size Core AXT

Depth Feet	Formation	Sample No.	Width	Orig. Ass.	% Ca.	% NiL	% U <sub>3</sub> O <sub>8</sub>
0.0	CASING						
1.0							
1.0	BASAL CONGLOMERATE - Bottom of						
8.5	Mississagi formation. Quartz pebbles in silicified matrix showing abundant pyrite. Low scintillometer readings indicate about 0.003 % U <sub>3</sub> O <sub>8</sub> .						
	Samples: 1.0' - 3.4'	15	2.4'	Tr			.003
	3.4' - 5.2'	16	2.8'	Tr			.002
	5.2' - 8.4'	17	3.2'	Tr			.003
8.5	BASEMENT ROCK - Highly altered gray-green sheared rock.						
54.0	Keewatin greenstone. Sulphides on 45° slip planes. 1" mineralized quartz vein @ 38.0'. Vein @ 45° to core.						
	1/2" mineralized flat quartz vein @ 53.0'.						
	Hole End 54.0'.						
	NOTE - Basement rock appears to be sheared Keewatin greenstone.						

Log By *MacVeigh*  
for B. L. MacVEIGH



Pickle Crow Gold Mines Ltd.  
 Assessment Work Recording  
 Pardo Township, Ontario.

YELLOW GROUP

May 30, 1956

1" = 400'

50  
 60  
 70  
 80  
 90

# DIAMOND DRILL RECORD

Hole No. B-0	Sheet No. 1	Picket Line B @ 00	
Property Pickle-Pardo	Co-ordinates Collar	Lat. ....	Dep. ....
Drilled by Boyle Bors.	Elev. Collar	Bearing Vertical	
Date Begun Jan. 13, 1956	Angle 90°	Working Place Claim S-89974	Total Depth 310.0'
Date Finished Jan. 17, 1956			Ft. of Core Recovered .....
Contractor's Footage 310:0'			% Recovery .....
			Size Bit Used .....
			Size Core AXT

Depth Feet	Formation	Sample No.	Width	Ore. An.	% Cu.	% Ni.	
0.0	CASING						
<del>6.0-8.0</del>	<del>SLATE-Dark, dense grained, rock, no banding.</del>						
<del>8.0-44.0</del>	<del>CLASTICS-semi-angular quartz fragments in dark matrix. Little mineralization. No radioactivity reading on scintillometer.</del>						
44.0-58.5	SLATE & GREYWACKE - Slate and greywacke showing fairly flat banding between bedding planes. Dark gray massive rock.						
58.5-60.0	LOST CORE						
60.0-85.5	SLATE & GREYWACKE - as above.						
85.5-93.7	CLASTICS - as above.						
93.7-106.7	MINERALIZED BASAL CONGLOMERATE showing quartz pebbles in silicified matrix well mineralized with pyrite and pyrrhotite. Scintillometer shows low radioactivity. Bedding planes @ 20° to core.						
	SAMPLES : 93.7-95.6; 98.1-99.5	18	3.3'	Tr.			005
	95.6-98.1	19	2.5'	Tr.			002
	99.5-106.2	20	6.7'	Tr.			002
106.7-107.7	SLATS-showing flat quartz vein 1" thick						
107.7-150.0	BASEMENT ROCK-Altered green-stone or sediments. Gray-green sheared rock, no banding.						
150.0-189.0	KEEWATIN GREENSTONE-Sheared and carbonated volcanics showing vesicular structure at 80° to core.						
189.0-195.0	ALTERED GREENSTONE-Pale carbonated rock showing calcite veins.						
195.0-256.0	GREENSTONE-as above showing abundant chlorite alteration in shearing @ 45° to core.						
256.0-276.0	GREENSTONE altered greenish sheared rock @ 246.0'-3" quartz vein @ 45° to core. Short section of chlorite alteration.						
276.0-279.0	FELDSPAR VEIN - 1" pink feldspar in greenstone @ 80° to core						
279.0-310.0	GREENSTONE - as above with section of chlorite schist. HOLE END 310.0'						

DUPLICATE COPY  
POOR QUALITY ORIGINAL  
TO FOLLOW

NOTE : Contact @ 107.7'

Log By *E. L. MacVEIGH*  
for E. L. MacVEIGH

# DIAMOND DRILL RECORD

Hole No. **8-0** Sheet No. **1** Picket Line **B & 00**  
 Property **Pickle-Pardo** Co-ordinate Collar  
 Drilled by **Boyle Bros.** Lat. Dep.  
 Date Began **Jan. 13, 1956** Elev. Collar  
 Date Finished **Jan. 17, 1956** Bearing **Vertical**  
 Contractor's Footage **310.0'** Angle **90**  
 Writing Place **Claim S. 2987A** Total Depth **310.0'**  
 Pt. of Core Recovered  
 % Recovery  
 Size Bit Used  
 Size Core **A1T**

Depth Foot	Formation	Sample No	Width	Om. An.	% Ca.	S % SiO <sub>2</sub>	S % U <sub>3</sub> O <sub>8</sub>
0.0 6.0'	CASING						
6.0 8.0	SLATE - Dark, dense grained rock, no banding						
8.0 44.0	CLASTICS - Semi-angular quartz fragments in dark matrix. Little mineralisation. No radioactivity reading on scintillometer.						
44.0 58.5	SLATE & GRAYWACKES - Slate and graywacke showing fairly flat banding between bedding planes. Dark gray massive rock.						
58.5 60.0	LOST CORE						
60.0 85.5	SLATE & GRAYWACKES - as above.						
85.5 93.7	CLASTICS - as above						
93.7 106.7	MINERALIZED BASAL CONGLOMERATE - showing quartz pebbles in silicified matrix well mineralized with pyrite & pyrrhotite. Scintillometer shows low radioactivity. Bedding planes - 20° to core.						
	<u>Sample</u>						
	93.7' - 95.6'	18	3.3'	Tr		Tr	.005
	95.6' - 98.1	19	2.5'	Tr		Tr	.002
	97.5' - 106.2	20	6.7'	Tr		Tr	.002
106.7 107.7	SLATE - showing flat quartz vein 1" thick.						
107.7 150.0	ALTERED GREENSTONE OR SEDIMENTS - Altered greenstone or sediments. Gray-green sheared rock, no banding.						

Log By .....  
for E. L. MacVEIGH

# DIAMOND DRILL RECORD

Hole No. B-0      Shot No. 2      Co-ordinates    Collar  
 Property Pickle-Pardo      Lat.      :      Dep.      :  
 Drilled by      Elev.    G. M.  
 Date Began      Bearing  
 Date Finished      Angle  
 Contractor's Footage      Working Place  
 Total Depth  
 Ft. of Core Recovered  
 % Recovery  
 Size Bit Used  
 Size Core

Depth Feet	Formation	Sample No.	Width	Obs. An.	% Co.	% NL
150.0'	<del>ALTAIR GNEISS</del> - sheared and					
189.0	carbonated volcanics showing vesicular structure at 80° to core.					
189.0	<del>ALTAIR GNEISS</del> - Pale carbon-					
195.0	ated rock showing calcite veins.					
195.0	<del>ALTAIR GNEISS</del> - as above showing					
256.0	abundant chlorite alteration in shearing - 45° to core.					
256.0	<del>ALTAIR GNEISS</del> - altered greenish					
276.0	sheared rock at 246.0' - 3" quartz vein - 45° to core. Short sections of chlorite alteration.					
276.0	<del>ALTAIR GNEISS</del> - 1" pink feldspar					
279.0	in greenstone - 80° to core.					
279.0	<del>ALTAIR GNEISS</del> - as above with sections					
310.0	of chlorite schist.					
	HOLE END - 310.0';					
	<del>ALTAIR GNEISS</del> - Contact - 197.7'.					

Log By

*E. L. MacVeach*  
for E. L. MacVeach

# DIAMOND DRILL RECORD

Hole No. C-0      Sheet No. 1  
 Property Pickle-Pardo  
 Drilled by ..Boyle Bros.  
 Date Begun ..Jan. 20, 1956  
 Date Finished ..Jan. 22, 1956  
 Contractor's Footage 174.0

Ricket Line C @ 00  
 Lat.      Dip.  
 Elev. Collar  
 Bearing      Vertical  
 Angle      Vertical  
 Working Place      Claim S-89974

Total Depth 174.0  
 Ft. of Core Recovered  
 % Recovery  
 Size Bit Used AXT  
 Size Core 1 1/2"

Depth Foot	Formation	Sample No.	Width	Ore Av.	% Cu.	% Ni.
0.0- 7.0	CASING					
7.0- 50.3	GREYWACKE-Fine grained gray rock with angular cherty fragments upto 1/2" in size frequently rimmed with pyrite and pyrrhotite mineralization. Some short lengths of clastic material show contacts with fine grained material of about 20°.					
50.3- 85.5	CLASTICS-Medium grained grey rock composed of greywacke ground mass and fragments upto 1" in size.					
85.5- 96.0	GREYWACKE- as above					
96.0- 97.0	CLASTICS - as above					
97.0-145.5	SLATE & GREYWACKE-Dense grained gray rock showing approximately flat bedding with coarser grained greywacke					
145.5-149.9	BASAL CONGLOMERATE-Glossy quartz pebbles in silicified greywacke matrix fairly well pyritized. SAMPLE	31	4'	Tr.		Tr.
149.9-150.5	SLATE - as above, no mineral.					
150.5-151.4	CONGLOMERATE - Mineralized as above. SAMPLE	32	1'	Tr.		0.005
151.4-154.0	SLATE & GREYWACKE-As above, no mineral.					
154.0-154.8	CONGLOMERATE-Mineralized as above. SAMPLE	33		Tr.		0.003
154.8-157.6	CONGLOMERATE-Mineralized as above. SAMPLE	34	3'	Tr.		0.003
157.6-159.8	CONGLOMERATE-Dark Phase, mineralized as above. SAMPLE	35	2'	Tr.		0.003
159.8-166.4	CONGLOMERATE-Pyritized as above. SAMPLE	36	7'	Tr.		0.005
166.4-168.4	CLASTICS-At bottom of conglomerate bed, silicified with some pyritization.					
168.4-174.0	GREENSTONE BASEMENT-dark micaceous rock, probably keewatin greenstone.					
	HOLE END - 174.0'					

DUPLICATE COPY  
 POOR QUALITY ORIGINAL  
 TO FOLLOW

Log By *E. M. McVeigh*  
 Mr. E. L. McVEIGH

# DIAMOND DRILL RECORD

C-0  
 Hole No. U Shot No. 1  
 Property Boyle Bros  
 Drilled by Boyle Bros  
 Date Began Jan. 20, 1956  
 Date Finished Jan. 22, 1956  
 Contractor's Footage 176.0

picket line U x 00  
 Co-ordinates Center  
 Lat. \_\_\_\_\_ Dep. \_\_\_\_\_  
 Elev. Center \_\_\_\_\_  
 Bearing Vertical  
 Azimuth Vertical  
 Working Plane Claim

Total Depth 176.0  
 Ft. of Core Recovered \_\_\_\_\_  
 % Recovery \_\_\_\_\_  
 Size Bit Used A17  
 Size Core 1 1/2"

Depth Feet	Formation	Sample No.	Width	Obs. An.	% Ca.	% Ni.	Other
0.0	CASING						
7.0							
7.0	<u>GRAYWACKES</u> - Fine grained gray rock						
50.3	with angular cherty fragments up to 1" in size frequently rimmed with pyrite and pyrrhotite mineralization. Some short lengths of elastic material show contacts with fine grained material of about 20°.						
50.3	<u>SANDSTONE</u> - medium grained gray rock						
85.5	composed of graywacke ground mass and fragments up to 1/2" in size.						
85.5	<u>GRAYWACKES</u> - As above.						
96.0							
96.0	<u>ELASTICS</u> - As above.						
97.0							
97.0	<u>SANDSTONE &amp; GRAYWACKES</u> - Dense grained gray rock showing approximately flat bedding with coarser grained graywacke.						
145.5							
145.5	<u>SANDSTONE &amp; GRAYWACKES</u> - Glossy quartz pebbles in silicified graywacke matrix fairly well pyritized.		4'				
149.9	Sample	31		CR			CR
149.9	<u>SANDSTONE</u> - As above, no mineral		1/2'				
150.5							
150.5	<u>SANDSTONE &amp; GRAYWACKES</u> - Mineralized as above		1'				
151.4	Sample	32		CR			0.005
151.4	<u>SANDSTONE &amp; GRAYWACKES</u> - As above, no mineral.		2 1/2'				
154.0							

Log By \_\_\_\_\_  
 for E. L. MacVIGOR



# C-0 DIAMOND DRILL RECORD

Hole No. **0**      Shot No. **2**      Co-ordinates Collar  
 Property **Pickle-Pardo**      Lat.      :      Dep.      :  
 Drilled by      :      :      :      :  
 Date Begun      :      :      :      :  
 Date Finished      :      :      :      :  
 Contractor's Footage      :      :      :      :      :      :  
 Total Depth **174.0'**  
 Ft. of Core Recovered  
 % Recovery  
 Size Bit Used  
 Size Core

Depth Foot	Formation	Sample No.	Width	Gr. An.	% Ca.	% Ni.	Sp. Gr.
154.0' 154.8	<del>Calcium Silicate</del> - Mineralized as above.		1'				
	Sample	33		tr			0.003
154.8 157.0	<del>Calcium Silicate</del> - Mineralized as above.		3'				
	Sample	34		tr			0.003
157.6 159.6	<del>Calcium Silicate</del> - Dark phase, mineralized as above.		2'				
	Sample	35		tr			0.003
159.8 160.4	<del>Calcium Silicate</del> - Pyritized as above.		1'				
	Sample	36		tr			0.005
160.4 162.4	<del>Silicate</del> - at bottom of conglomerate bed, silicified with some pyritization.		2'				
162.4 174.0	<del>Dark siliceous rock</del> - dark micaceous rock, probably kaesalite greenstone.						
	Total Hole = 174.0'						

Log By *E. L. McVigh*  
 for E. L. McVIGH

# DIAMOND DRILL RECORD

Hole No. **B-4-S** Sheet No. **Picket Line B Plus 400'S**  
 Property **Pickle-Pardo** Co-ordinates **plus 89'E**  
 Drilled by **Boyle Bros.** Lat. **.....** Dip **.....**  
 Date Begun **Feb. 21, 1956** Elev. Collar **.....**  
 Date Finished **Feb. 24, 1956** Bearing **South**  
 Contractor's Footage **301.0** Angle **40°**  
 Working Place **Claim S-89974**

Total Depth **301.0'**  
 Ft. of Core Recovered **.....**  
 % Recovery **.....**  
 Size Bit Used **1 1/2"**  
 Size Core **AXT**

Depth Feet	Formation	Sample No.	Width	Ozs. Au.	% Cu.	% Ni.
0.0- 7.0	CASING					
7.0- 24.0	SLATY GREYWACKE-Basal formation below cobalt conglomerate correlated with Mississagi Formation. Fine grained siliceous greyrock. Banding about 45° to core.					
24.0- 48.0	GRAYWACKE-Matrix with a few chert pebbles and angular fragments.					
48.0- 66.0	SLATY GRAYWACKE as above - few pebbles.					
66.0- 70.0	<del>ELASTICS</del> small fragments and silicified matrix with some pyritization.					
70.0-111.0	<del>SLATY GREYWACKE</del> -banding at 45° to core					
111.0-118.0	PYRITIZED PEBBLE CONGLOMERATE-quartz pebbles upto 1" with well pyritized matrix. SAMPLE : 111.0-115.0 115.0-118.0	59 60	4.0' 3.0'	0.02 Tr.		0.005 0.004
118.0-120.0	SLATY GREYWACKE: as above.					
120.0-193.0	SUDBURY SERIES: sheared slates and greywacke showing considerable biotite contact at 120.0 shows 2" of biotite schist. Some quartz vein formation with a little pyrite and chalcocopyrite 6" quartz vein @ 182.5' @ 45° to core - barren.					
193.0-301.0	SHEARED SLATE AND GREYWACKE - as above - finely disseminated pyrite in argillite - band from 193.0-197.0 1" of lightly mineralized quartz @ 264.0 - pyrite and pyrrhotite. HOLE END - 301.0'					

DUPLICATE COPY  
 POOR QUALITY ORIGINAL  
 TO FOLLOW

Log By *E. L. McVEIGH*  
 E. L. McVEIGH

# DIAMOND DRILL RECORD

40

Hole No. <b>4-4</b>	Sheet No. <b>1</b>	Ficket line <b>B plus 400' S plus 89' E</b>	Total Depth <b>301.0'</b>
Property <b>Pickles Pardo</b>	Co-ordinates Collar	Lat. ....	Pt. of Core Recovered .....
Drilled by <b>Feb. 21, 1956</b>	Long. ....	Elev. Collar <b>South</b>	% Recovery .....
Date Finished <b>Feb. 24, 1956</b>	Bearing <b>40°</b>	Angle <b>40°</b>	Stm Dk Used <b>1 1/2"</b>
Contractor's Footage <b>301.0'</b>	Working Plan <b>Claim No. 89921</b>		Size Core <b>ART</b>

Depth Foot	Formation	Sample No.	Width	Ore. Ass.	% Cu.	% Ni.	
0.0 7.0	<b>CASING</b>						<b>1/20</b>
7.0 24.0	<b>SLATY GRAYWACKS - Basal formation below cobalt conglomerate correlated with Mississippian Formation. Fine grained siliceous grayrock. Banding about 45° to core</b>						
24.0 48.0	<b>GRAYWACKS - Matrix with a few chert pebbles and angular fragments.</b>						
48.0 66.0	<b>SLATY GRAYWACKS as above - few pebbles</b>						
66.0 70.0	<b>CLASTIC - small fragments and silicified matrix with some pyritization.</b>						
70.0 111.0	<b>SLATY GRAYWACKS - banding at 45° to core.</b>						
111.0 118.0	<b>PYRITIZED PEBBLE CONGLOMERATE - quartz pebbles up to 1" with well pyritized matrix.</b>						
	Sample - 111.0' - 115.0'	59	4.0'	0.02			0.005
	115.0' - 118.0'	60	3.0'	tr			0.006
118.0 120.0	<b>SLATY GRAYWACKS - as above</b>						
120.0 193.0	<b>SUDBURY SERIES - sheared slates and graywacke showing considerable biotite contact at 120.0 shows 2" of biotite schist. Some quartz vein formation with a little pyrite and chalcopyrite. 6" quartz vein at 182.5' at 45° to core - barren</b>						

Log By .....  
for E. L. McVEIGH



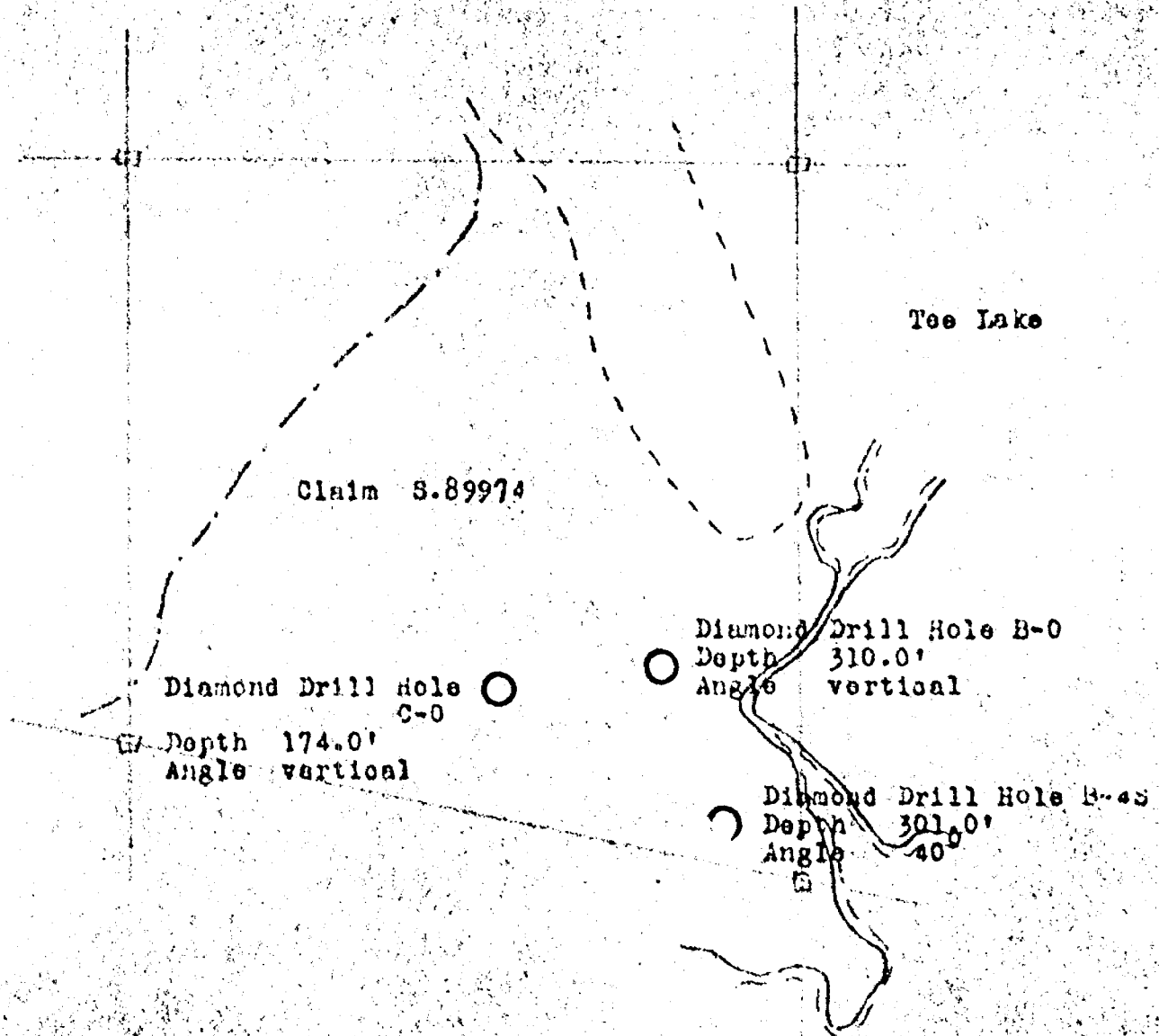
PICKLE CROW GOLD MINES LIMITED

WORK RECORDING

Map scale 1" to 200'

PARDO TOWNSHIP

1" = 200'



for contiguous claims S.89974-75  
S.85389 to 85401 inc.

December 12th, 1956  
E. L. MacVeigh

CLAIM 5 89975

# DIAMOND DRILL RECORD

Hole No. A-2N Sheet No. 1  
 Property Pickle-Pardo  
 Drilled by Boyles Bros.  
 Date Began Feb. 7, 1956  
 Date Finished Feb. 14, 1956  
 Contractor's Footage 606.0'

Picket line A plus 196'N  
 Co-ordinates Corner plus 2'W  
 Lat. Dep.  
 Elev. Collar  
 Bearing South  
 Angle 38°  
 Working Place Claim

Total Depth 606.0'  
 Ft. of Core Recovered  
 % Recovery  
 Size Bit Used AXT  
 Size Core 1 1/2"

Depth Feet	Formation	Sample No.	Width	Ore Ass.	% Cu.	% Ni.	
0.0	CASING						308
5.0							
5.0	QUARTZ PEBBLE CONGLOMERATE - basal						
17.0	Mississagi formation.						
	SAMPLE - 5.0 - 11.0	56	6.0'	Tr			0.008
	11.0 - 17.0	57	6.0'	Tr			Tr
17.0	SLATY GRAYWACKE - sheared basement						
374.8	rock underlying conglomerate						
	correlates with Sudbury Series						
	sediments. Surface outcrop shows						
	dip of 85° to north. Narrow frag-						
	mental bands with "frayed" fragments						
	show angle of 20° to core (80° dip).						
	Some narrow calcite and quartz veins						
	barren or lightly pyritized. Some						
	biotite schist development in gray						
	fine grained rocks. Shearing and						
	fractures at 45° to core.						
	@ 175.0' - 1" feldspar veins						
	with galena and sphalerite.						
	@ 177.0' - 6" feldspar and shear						
	with chalcopyrite and galena.						
	@ 190.0' - 8" feldspar with galena						
	and chalcopyrite.						
	@ 239.0' - 6" feldspar vein - barren						
	feldspar probably indicates fractured						
	zones.						
	@ 272.0' - narrow feldspar vein -						
	barren.						
	@ 336.0' - 3" quartz vein with						
	light pyritization.						
374.8	SHEAR with feldspar vein and chal-						
380.0	copyrite.						
	SAMPLE - 374.8 - 380.0	58	5.2'	0.03	0.80		

Log By *Shanley*  
 for B. L. MacVEIGH



# DIAMOND DRILL RECORD

*CLAIM S. 85385*

Hole No. **K-45-43** Sheet No. **1**  
 Property **Pickle Crow - Pardo**  
 Drilled by **Boyles Bros.**  
 Date Began **Feb. 14, 1956**  
 Date Finished **Feb. 21, 1956**  
 Contractor's Footage **44.0'**

Co-ordinates Collar  
 Lat. **.....** Dep. **.....**  
 Elev. Collar **.....**  
 Bearing **.....**  
 Angle **S. - 90°**  
 Working Place **Claim S. 85385**

Total Depth **44.0'**  
 Ft. of Core Recovered **.....**  
 % Recovery **.....**  
 Size Bit Used **.....**  
 Size Core **1 1/2"**

Depth Feet	Formation	Sample No.	Width	Ore An.	% Cu.	% Ni.
00.0 44.0	<b>OVERBURDEN</b>					
	Hole End <b>44.0'</b>					
	Note: Hole abandoned due to difficult overburden.					

Log By *[Signature]*  
for **E. L. MacVIGH**





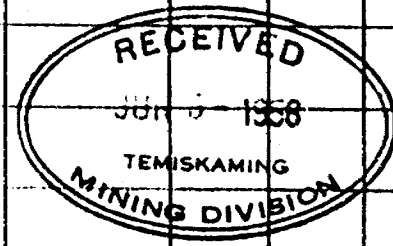
# DIAMOND DRILL RECORD

CLAIM 581356

(17) 118

Hole No. <b>I-33-S</b> Sheet No. <b>1</b>	Picket line <b>1</b> plus <b>3300S</b>	Total Depth <b>482.0</b>
Property <b>Pickle-Pardo</b>	Coordinates Collar <b>plus 300'W approx.</b>	Pt. of Core Recovered
Drilled by <b>Boyles Bros.</b>	Lat. <b>Dep.</b>	% Recovery
Date Began <b>Mar. 8, 1956</b>	Elev. Collar	Size Bit Used <b>AXT</b>
Date Finished <b>Mar. 13, 1956</b>	Bearing <b>Vertical</b>	Size Core <b>1 1/2"</b>
Contractor's Footage <b>482.0</b>	Angle <b>Vertical</b>	
	Working Place Claim	

Depth Feet	Formation	Sample No.	Width	Ozs. Au.	% Cu.	% Ni.	%
0.0	<b>CASING</b>						1.08
8.0							
8.0	<b>SLATY-GRAYWACKE</b> , fine to dense						
109.0	grained gray rock. Some sections quartzitic. Few fractures & calcite stringers @ 45° to core.						
	2" quartz vein @ 103' barren						
	SAMPLE = 100.8 - 101.6	70	0.8'	nil			0.011
	Geiger shows 0.01% in pyritized slip in slate.						
109.0	<b>QUARTZITE</b> hard siliceous gray rock						
207.5	showing calcite stringers @ 45° to core. Narrow slate bands at 45° to core.						
207.5	<b>CONGLOMERATE</b> rounded pebble conglomerate. Pebbles up to 4" diameter. Some quartz pebbles. No mineralization.						
227.0							
227.0	<b>SLATY GRAYWACKE</b> as above.						
260.0	8" barren quartz @ 252'						
	14" barren quartz @ 254'						
260.0	<b>GRAYWACKE</b> with narrow conglomerate						
288.0	bands consisting of angular to rounded chert fragments.						
288.0	<b>CLASTICS</b> crowded chert fragments up						
318.0	to 1" long in siliceous matrix. Occasional rounded pebble up to 2". Narrow slate bands @ 317' show flat dip.						
	(Contact Cabalt a mineralogist?)						
318.0	<b>SLATY GRAYWACKE</b> as above. Banding						
363.0	shows flat dip - 10° - 20°.						
363.0	<b>QUARTZITE</b> siliceous gray rock,						
370.7	massive.						



Log By .....  
for **E. L. McVEIGH**







CLAIM 581358

570

# DIAMOND DRILL RECORD

Hole No. **P-215** Sheet No. **1** Co-ordinates Collar **Picket line P. plus 2100' approx.** Total Depth **442.0**  
 Property **Pickle-Pardo** Lat. \_\_\_\_\_ Elev. Collar \_\_\_\_\_ Pt. of Core Recovered \_\_\_\_\_  
 Drilled by **Boyles Bros.** Bearing **Vertical** % Recovery \_\_\_\_\_  
 Date Begun **March 23, 1956** Angle **Vertical** Size Bit Used **AIT**  
 Date Finished **March 28, 1956** Working Place **Claim** Size Core **1 1/4"**  
 Contractor's Footage **442.0**

Depth Feet	Formation	Sample No.	Width	Gr. As.	% Ca.	% Ni.
0.0	<u>SLATY GRAYWACKE</u> - Keewatin Basement					
18.0	Block-like grained gray rock showing interbedded slate bands in graywacke. Banding shows 45° to 60°, @ 23' - 8" mica schist.					
18.0	<u>GREENSTONE</u> carbonated greenish					
38.0	altered rock, sheared, with calcite stringers and some pyrite.					
38.0	<u>GREENSTONE</u> blue-gray volcanic rock.					
49.0	<u>GREENSTONE</u> carbonated greenish					
122.0	altered rock with shearing and calcite stringers. Pyritized slip faces. Some quartz and pink feldspar stringers. @ 122' - 2" quartz vein @ 70° to core - no mineral.					
122.0	<u>SLATY GRAYWACKE</u> slate band in gray-					
442.0	wacke show 70° to core. Sheared with calcite stringers. @ 249' - 1" quartz vein @ 45° no mineral @ 280' - banding 45° to core slate-graywacke @ 349' - 3" quartz - no mineral @ 347' - banding @ 60° to core					
	HOLE END - 442.0'					
	NOTE: Hole apparently collared in basement rock below Mississagi in absence of geological information and in snow conditions.					

Log by *E. MacLaughlin*  
for E. L. McVEIGH

North



S. 81358

⊙ DDH P-21S 442'

S. 81357

⊙ DDH I-33S 482'

S. 81356

⊙ DDH I-33S 47'

1" to 400'

Pickle Crow Gold Mines Ltd.  
Assessment Work Recording  
Pardo Township, Ontario.

1" = 400'

May 30, 1956

394  
11/11/56

PICKLE CROW - PADRO TOWNSHIP DRILL HOLES

NO. 2 PROGRAM

August 15th, 1956 to November 22nd, 1956

HOLE	CLAIM NO.	ANGLE AT COLLAR	DEPTH	PEBBLE CONGLOMERATE INTERSECTION
No. 1	T.42023	90°	1059'	Hole abandoned
No. 3	T.42033	90°	1095'	1076.7' to 1084.2'
No. 7	S.81593	90°	1292'	1162.6' to 1235.0'
No. 8	S.81591	90°	650'	534.5' to 575.0'



FOR ADDITIONAL INFORMATION

RE: PROGRAM #2

SEE: PARDO - 0013

# DIAMOND DRILL RECORD

Hole No. 3 Sheet No. 1 Coordinates Collar  
 Property Pickle Crow - Pardo Lat.                      Dep.                       
 Drilled by Cameron D.D. Elev. Collar Silver Lake 3'  
 Date Begun Sep. 12, 1956 Bearing                       
 Date Finished Oct. 3, 1956 Angle Vertical at collar  
 Contractor's Footage 1095.0 Working Plan T-42033

Total Depth 1095.0'  
 Ft. of Core Recovered 1095.0'  
 % Recovery 100%  
 Size Bit Used                       
 Size Core                     

Depth Feet	Formation	Sample No.	Width	Oss. An.	% Co.	% Ni.
0.0- 5.0	CASING - 18" stick up					
5.0-578.2	<del>IMPURE QUARTZITE with a few scattered small quartz pebbles and narrow quartz pebble strings. Rock is medium to darker gray in colour. About medium grain generally Hard, siliceous massive rock. Few slips and fractures with locally a little pyrite.</del>					
	<del>NOTE: (@410'-4.6' quartz pebble string) (@112'-114' - fractured with some rust along fractures) (@ 461' quartz pebble string at about right angles to core).</del>					
578.2-579.7	<del>QUARTZ PEBBLE BED-quartz pebbles in slaty to quartzitic groundmass. Pebbles upto 1" in diameter with a little pyrite and pyrrhotite mostly along rims at quartz pebbles.</del>					
	<del>SAMPLE : 578.2-579.7</del>	9	1.5'	.01		.005
579.7-714.2	<del>IMPURE QUARTZITE, as above</del>					
	<del>NOTE (@582.3'-582.6' a few quartz pebbles) (@600'-625' a few slips and fractures at various angles to core)</del>					
714.2-714.3	<del>QUARTZ VEIN-with small chloritic inclusions at about right angles to core</del>					
714.3-746.7	<del>SLATE GRAYWACKE BED-medium gray colour. Grading from very fine grained soft slaty massive rock at beginning of section to medium grained impure quartzite or graywacke at end of section. Rock through is massive. No bedding.</del>					
746.7	<del>Contact @ 75" to core</del>					
746.7-793.1	<del>SLATE GREYWACKE BED-similar to section 714.3-746.7'</del>					
793.1-848.5	<del>SLATY BED-fine grained to medium grained. Medium to dark gray colour. Quite soft rock. Massive. No signs of bedding. Numerous tiny fractures and a few slips at intervals.</del>					
848.5-911.8	<del>CONGLOMERATE-Small generally poorly rounded assorted pebbles and grains (mostly cherts and quartz) in soft slaty to graywacke groundmass. Pebbles become larger towards bottom of section. (Porphyritic boulder at 887' about 5" in diameter) Locally a little pyrrhotite rimmed on quartz grains and pebbles. Locally a few small irregular pink calcite threads.</del>					

DUPLICATE COPY  
 POOR QUALITY ORIGINAL  
 TO FOLLOW

Log By *E. L. McVEIGH*  
 E. L. McVEIGH

# DIAMOND DRILL RECORD

Hole No. <b>3</b>	Sheet No. <b>2</b>	Coordinates Collar	Total Depth
Property	Lat.	Long.	Ft. of Core Recovered
Drilled by	Elev. Collar	Bearing	% Recovery
Date Begun	Angle	Working Floor	Size Bit Used
Date Finished			Size Core
Contractor's Pageage			

Depth Foot	Formation	Sample No.	Width	Gm. Av.	% Cu.	% Ni
911.8-945.1	GREYWACKE WITH GRITT SECTIONS - Fine to medium grained greywacke Medium to darker gray colour with small pebbles and grains. Locally short gritty sections (clastics) probably about 10% of rock. Rock quite massive and fairly hard.					
945.1-948.2	<del>CLASTICS "Grit" close packed small angular, to poorly rounded chert and quartz fragments.</del>					
948.2-989.3	GREYWACKE-fine to medium grain. Medium to lighter gray colour. Locally almost slaty. Massive. Fairly hard rock					
989.3	SHARP CONTACT @ 55° to core					
989.3-1012.5	IMPURE QUARTZITE-Fine grained, medium grayish colour. Locally like greywacke. Hard, siliceous, massive rock.					
1012.5	Sharp Contact @ 65° to core					
1012.5-1026.5	GREYWACKE-Medium grain. Medium gray Massive hard rock.					
1026.0-1065.8	SLATE-GREYWACKE Fine to medium grain. Medium to dark gray colour. Grading locally from slaty to graywacke like rock. MASSIVE, fairly soft rock.					
1065.8	Sharp contact @ 80° to core.					
1065.8-1076.7	IMPURE QUARTZITE-Medium to coarse grained. Hard massive siliceous rock. <del>locally quartz grains upto 1" diameter.</del> NOTE: (@ 1073.4'-1073.7 -soft slaty bed)					
1076.7-1084.2	QUARTZ PEBBLE CONGLOMERATE-generally close packed rounded to poorly rounded quartz and cherty pebbles upto 2" in diameter A few pebbles of softer yellowish gray material in siliceous hard quartzitic groundmass. Mineralization: (Probably upto 5% pyrrhotite in narrow almost massive streaks and scattered through matrix between quartz pebbles. Considerable chalcopyrite at 1078.2').					
	SAMPLE : 1076.7-1081.7	10	5.0	.005	.06	.003
	1081.7-1084.2	11	2.5	Tr.	.06	.006

DUPLICATE COPY  
POOR QUALITY ORIGINAL  
TO FOLLOW

Log By *E. L. McVEIGH*  
E. L. McVEIGH

# DIAMOND DRILL RECORD

Hole No. <b>3</b>	Shot No. <b>3</b>	Co-ordinates Collar	Total Depth
Property	Lat. ....	Long. ....	Ft. of Core Recovered
Drilled by	Elev. Collar	Bearing	% Recovery
Date Begun	Angle	Working Floor	Size Bit Used
Date Finished			Size Core
Contractor's Name			

Depth Foot	Formation	Sample No.	Width	Ozs. Av.	% Cu.	% Ni.
1084.2'	Contac' at about 55° to core					
1084.2-1095	BASEMENT ROCK-Greywacke like rock. Fine to medium grained, narrow to wide irregular banded effect at various angles to core. Medium grayish rock, with irregular slightly schistose appearance. Considerable pyrrhotite mineralization scattered through NOTE (@ 1091.2' 1/2" quartz stringer with pyrite, pyrrhotite and some chalcopyrite).					
	HOLE END - 1095.0					
	DIP TESTS :					
	200' - 86°					
	400' - 83°					
	600 - 81 1/2°					
	800 - 78°					
	1000 - 75 1/2°					
<p><b>DUPLICATE COPY</b>  <b>POOR QUALITY ORIGINAL</b>  <b>TO FOLLOW</b></p>						

Log By *E. M. ...*  
for E. L. McVEIGH

# DIAMOND DRILL RECORD

Hole No. <b>3</b>	Sheet No. <b>1</b>	Coordinates Collar	Total Depth <b>1095.0'</b>
Property <b>Pickle Crow-Pardo</b>		Lat. <b>Silver Lake 3 5'</b>	Ft. of Core Recovered <b>1095.0'</b>
Drilled by <b>Cameron D.D.</b>		Elev. Collar <b>Vertical at collar</b>	% Recovery <b>100%</b>
Date Began <b>Sept. 12, 1956</b>		Bearing <b>T. 420 33</b>	Size Bit Used
Date Finished <b>Oct. 3, 1956</b>		Working Place	Size Core
Contractor's Footage <b>1095.0'</b>			

Depth Feet	Formation	Sample No.	Width	Ozs. Au.	% Cu.	% Ni.	U <sub>3</sub> O <sub>8</sub>
0.0'	CASING- 18" stick up						
5.0'							
5.0'	IMPURE QUARTZITE-with a few scattered						
578.2'	small quartz pebbles and narrow quartz pebble strings. Rock is medium to darker gray in colour. About medium grain generally. Hard, siliceous massive rock. Few slips and fractures with locally a little pyrite. NOTE: (at 410'-4.6' quartz pebble string.) (at 112'-114' - fractured with some rust along fractures). (at 461'-quartz pebble string at about right angles to core.)						
578.2'	QUARTZ PEBBLE BED-quartz pebbles						
579.7'	in slaty to quartzitic groundmass. Pebbles up to 1" in diameter with a little pyrite and pyrrhotite mostly along rims at quartz pebbles. SAMPLER: 578.2' - 579.7'	9	1.5'	.01	--		.005
579.7'	IMPURE QUARTZITE-as above						
714.2'	NOTE: (at 582.3'-582.6' a few quartz pebbles.) (at 600'-625' a few slips and fractures at various angles to core.)						
714.2'	QUARTZ VEIN-with small chloritic inclusions at about right angles to core.						
714.3'							
714.3'	SLATE-GRAYWACKE BED-medium gray colour. Grading from very fine grained soft slaty massive rock at beginning of section to medium grained impure quartzite or graywacke at end of section. Rock through is massive. No bedding.						
746.7'							

*W. Hammerstrom*

Log By **W. Hammerstrom**  
for **B. L. McVEIGH**

# DIAMOND DRILL RECORD

Hole No. <b>3</b>	Sheet No. <b>2</b>	Coordinates Collar	Total Depth
Property <b>Pickle Crow-Pardo</b>	Lat. ....	Dip. ....	Pt. of Core Recovered
Drilled by <b>Cameron D.D.</b>	Elev. Collar		% Recovery
Date Began	Bearing		Size Bit Used
Date Finished	Angle		Size Core
Contractor's Footage	Working Place		

Depth	Description	Sample No.	Width	Ozs. As	% Ca.	% Ni.
746.7'	Contact @ 75° to 80°					
746.7'	SLATE-GRAYWACKE BND-similar to					
793.1'	section 714.3'-746.7'.					
793.1'	SLATI BND-fine grained to medium					
848.5'	grained. Medium to dark gray colour. Quite soft rock. Massive. No signs of bedding. Numerous tiny fractures and a few slips at intervals.					
848.5'	CONGLOMERATE-small generally poorly					
911.8'	rounded assorted pebbles and grains (mostly chert and quartz) in soft slaty to graywacke groundmass. Pebbles become larger towards bottom of section. (Porphyritic boulder at 887' about 5" in diameter.) Locally a little pyrrhotite rimmed on quartz grains and pebbles. Locally a few small irregular pink calcite threads.					
911.8'	GRAYWACKE WITH ORITT SECTIONS					
943.1'	Fine to medium grained graywacke. Medium to darker gray colour with small pebbles and grains. Locally short gritty sections (olastics) probably about 10% of rock. Rock quite massive and fairly hard.					
943.1'	OLASTICS-"Orit" - close packed					
948.2'	small angular, to poorly rounded chert and quartz fragments.					
948.2'	GRAYWACKE-fine to medium grain.					
989.3'	Medium to lighter gray colour. Locally almost slaty. Massive. Fairly hard rock.					

Log By **W. Hammerstrom**  
for **E. L. MacVEIGH**

B25

# DIAMOND DRILL RECORD

Hole No. <b>3</b>	Sheet No. <b>3</b>	Co-ordinates Collar	Total Depth
Property <b>Pickle Crow-Pnrdo</b>	Lat.	Dep.	Ft. of Core Recovered
Drilled by <b>Casaron D.D.</b>	Elev. Collar		% Recovery
Date Began	Bearing		Size Bit Used
Date Finished	Angle		Size Core
Contractor's Footage	Working Place		

Depth Feet	Formation	Sample No.	Width	Ozs. As.	% Ca.	% Ni.	% U <sub>3</sub> O <sub>8</sub>
989.3'	Sharp Contact @ 55° to core.						
989.3'	<del>IMPURE QUARTZITE</del> - Fine grained, medium grayish colour. Locally like graywacke. Hard, siliceous, massive rock.						
1012.5'	Sharp Contact @ 65° to core.						
1012.5'	<del>GRAYWACKE</del> -Medium grain. Medium gray. Massive hard rock.						
1026.0'	<del>SLATE-GRAYWACKE</del> -Fine to medium grain. Medium to dark gray colour. Grading locally from slaty to graywacke like rock. Massive, fairly soft rock.						
1065.8'	Sharp Contact @ 80° to core.						
1065.8'	<del>IMPURE QUARTZITE</del> -Medium to coarse grained. Hard massive siliceous rock. Locally quartz grains up to 1/4" diameter. NOTE: (at 1073.4'-1073.7' soft slaty bed.)						
1076.7'	<del>QUARTZ PEBBLE CONGLOMERATE</del> -generally close packed, rounded to poorly rounded quartz and cherty pebbles up to 2" in diameter. A few pebbles of softer yellowish gray material in siliceous hard quartzitic groundmass. <u>Mineralization:</u> (Probably up to 5% pyrrhotite in narrow almost massive streaks and scattered through matrix between quartz pebbles. Considerable chalcopyrite at 1078.2').						
1084.2'	SAMPLES: 1076.8'-1081.7' 1081.7'-1084.2'	10 11	5.0' 2.3'	.005 Tr	.06 .06		.003 .006
1084.2'	CONTACT AT ABOUT 55° to core.						

Log By **H. Hammerstrom**  
for **E. L. McVEIGH**

# DIAMOND DRILL RECORD

Hole No. <b>3</b>	Sheet No. <b>4</b>	Coordinates Collier	Total Depth
Property <b>Pickle Crow-Parde</b>	Lat.	Dep.	Pct. of Core Recovered
Drilled by <b>Cameron D. D.</b>	Elev. Collar		% Recovery
Date Began	Bearing		Size Bit Used
Date Finished	Angle		Size Core
Contractor's Postage	Working Place		

Depth Feet	Formation	Sample No.	Width	Ozs. Au.	% Cu.	% Ni.
1084.2'	<del>BASINENT ROCK-Graywacke like rock.</del>					
1095.0'	<del>Fine to medium grained, narrow to wide irregular banded effect at various angles to core. Medium grayish rock, with irregular slightly schistose appearance. Considerable pyrrhotite mineralisation: scattered through.</del>					
	<del>NOTE: (at 1091.2' <math>\frac{1}{2}</math>" quartz stringer with pyrite, pyrrhotite, and some chalcopyrite.)</del>					
	HOLE END - 1095.0'					
	<u>DIP TESTS:</u>					
	at 200' - 86°	at 400' - 83°				
	at 600' - 81½°	at 800' - 78°				
	at 1000' - 75½°					

*W. Hammerstrom*

For By **W. Hammerstrom**  
for E. L. McVEIGH



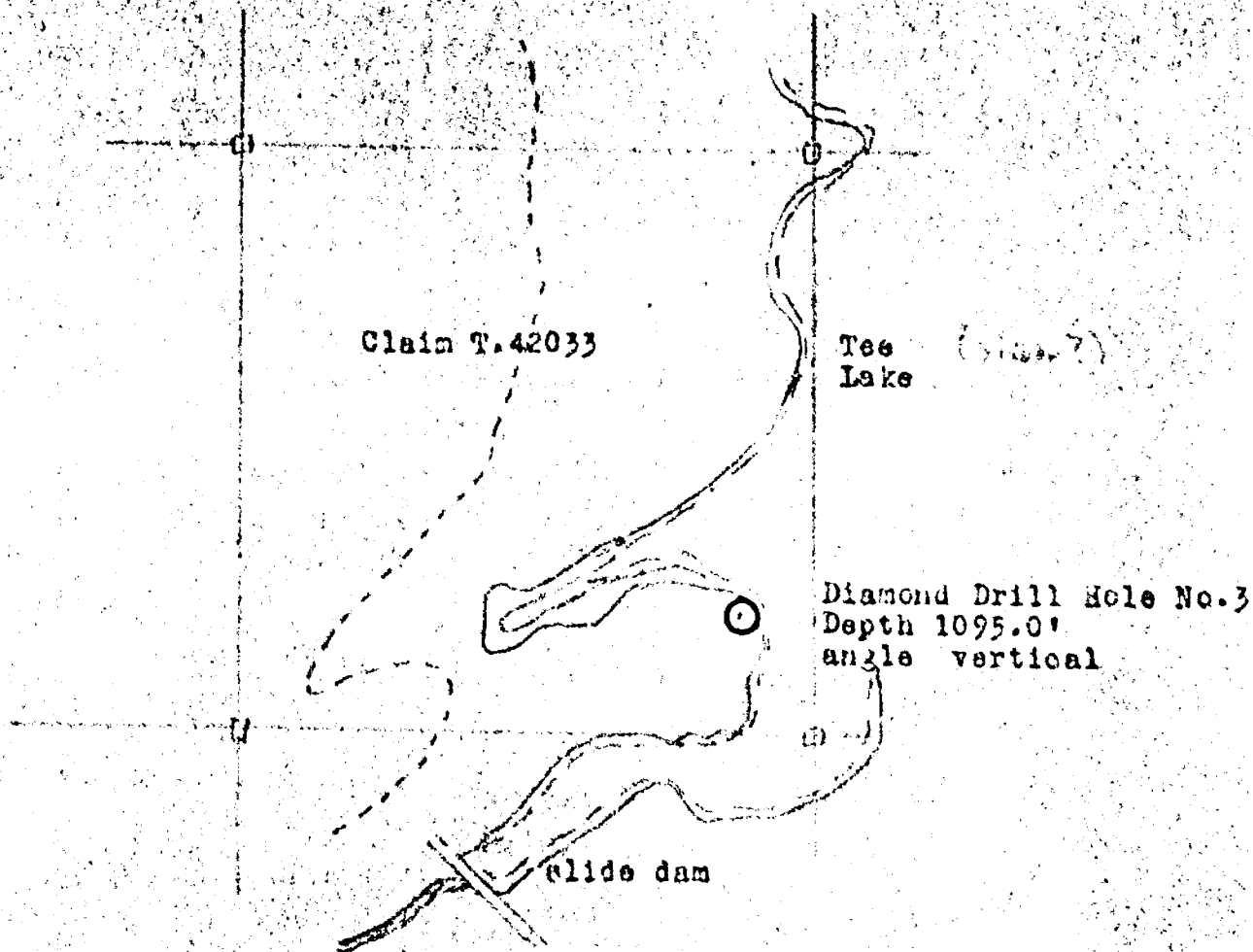
PICKLE CROW GOLD MINES LIMITED

WORK RECORDING

Map scale 1" to 200'

PARDO TOWNSHIP

1" = 200'



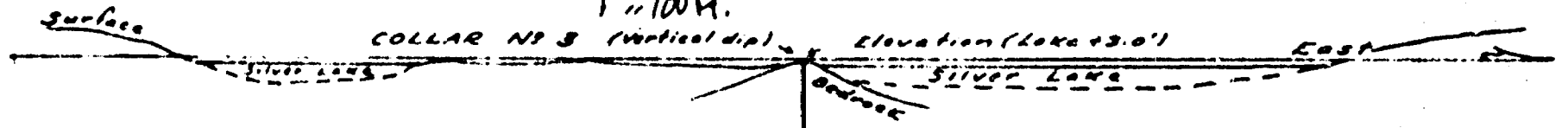
for contiguous claims T. 42032 to 42040 inc.  
T. 41590 to 41598 inc.

December 12, 1956  
E. L. MacVeigh

VERTICAL SECTION OF  
D.D. HOLE NO 3  
PICKLE CROW GOLD MINES LTD.  
PARDO TOWNSHIP, TEMAGAMI MINING AREA - ONT.

Scale: 1 inch = 100 feet

1" = 100 ft.



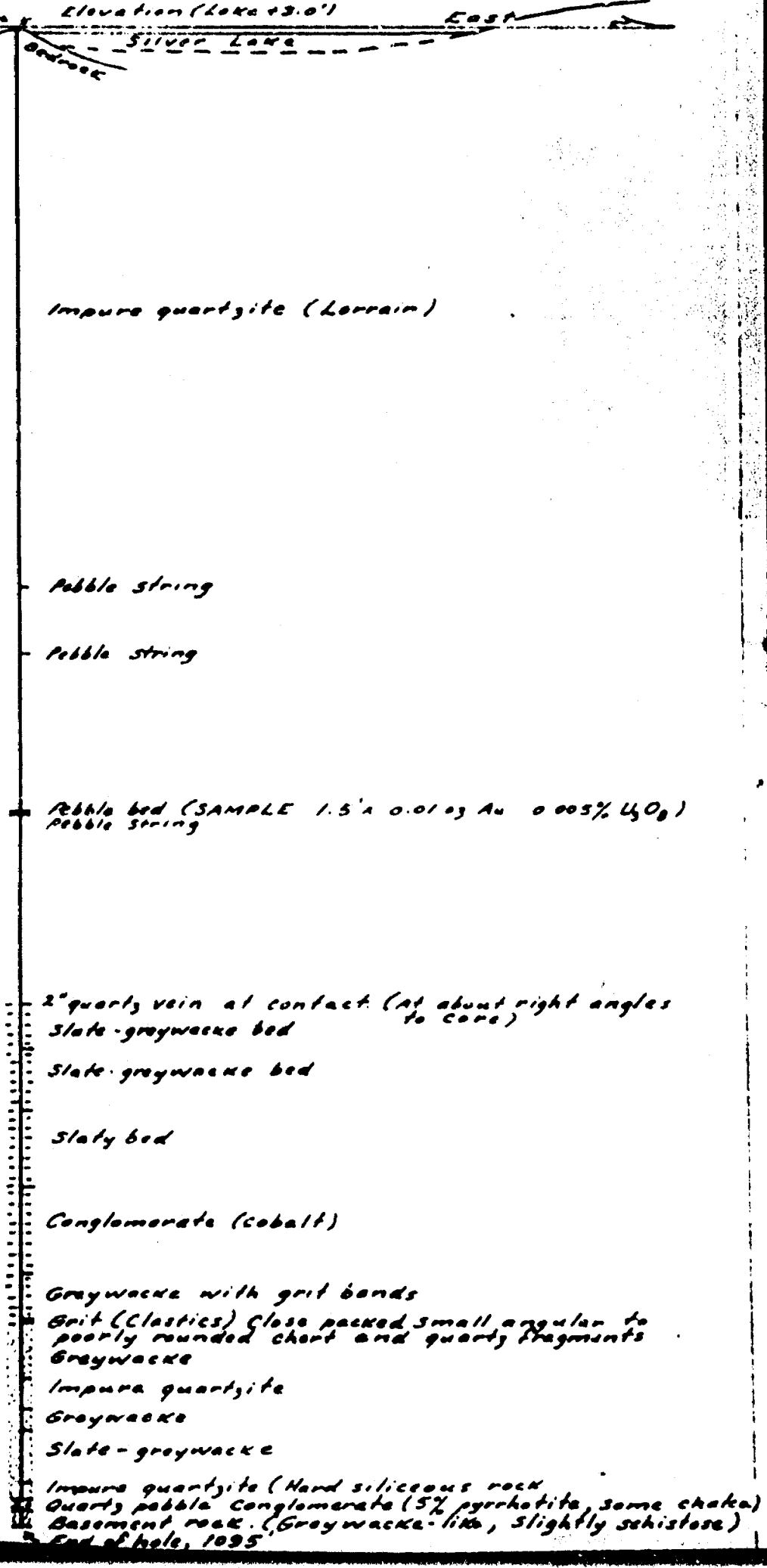
**DIP TESTS**

@ 200'	- 86°
@ 400'	- 83°
@ 600'	- 81°
@ 800'	- 78°
@ 1000'	- 75°

**LOCATION:**  
 Approx 800' NE of dam at foot  
 of Silver Lake

**LEGEND**

- Lorrain Series Sediments**  
 [ ] Quartzite with local quartz pebble strings
- Cobalt Series Sediments**  
 [ ] Slate, graywacke, Conglomerate and grit
- Mississagi Series Sediments**  
 [ ] Slate, graywacke and quartzite  
 [ ] Mineralized quartz pebble conglomerate
- Keewatin Series**  
 [ ] Volcanics and sediments



5.0' x 0.005% Au, 0.06% Cu, 0.003% U<sub>3</sub>O<sub>8</sub>  
 2.5' x 7' Au, 0.06% Cu, 0.006% U<sub>3</sub>O<sub>8</sub>

# DIAMOND DRILL RECORD

173' N of Road Junction

Hole No. **E 7** Sheet No. **1**  
 Property **Pickle Crow - PARCO**  
 Drilled by **Cameron D-2**  
 Date Began **Oct. 8, 1936**  
 Date Finished **Nov. 5, 1936**  
 Contractor's Footage

Co-ordinates Collar  
 Lat. .... Dep. ....  
 Elev. Collar  
 Bearing **Vertical**  
 Angle **Vertical 3 collar**  
 Working Place **Quartz S. 81593**

Total Depth **1292.0'**  
 Ft. of Core Recovered  
 % Recovery  
 Size Bit Used  
 Size Core **AT**

Depth Feet	Formation	Sample No.	Width	Ore. An.	% Cu.	% Ni.	
0.0' 2.6'	<u>GAZING</u>						
2.6' 492.0'	<u>IMPURE QUARTZITE</u> -similar to rock 4.0'-578.2' in Hole No. 3 (locally a little pyrite along slips)						
492.0'	<u>QUARTZ PEBBLE BAND</u> -quartz and cherty						
493.2'	pebbles, well rounded in siliceous impure quartzite. Some pyrrhotite mineralisation.						
	<del>SECTIONAL LOG OF QUARTZITE</del>		<del>LOG</del>				
493.2' 829.0'	<u>IMPURE QUARTZITE</u> -as before. Few scattered quartz pebbles and quartz pebble bands. NOTE: @ 500.7'-501.5' quartz pebble band, some pyrrhotite; @ 532.3'-533.0' assorted pebbles; @ 568.4'-569.4' assorted pebbles; @ 668.5'-669.3' few quartz pebbles. At core shock. <u>CONTACT</u> -@ 829.0' (?) Lower contact Lorrain Quartzite ? but probably @ 900'.						
829.0' 905.0'	<u>IMPURE QUARTZITE</u> -dense grained, gray, massive rock. Slips @ 60° to core.						
905.0' 991.0'	<u>SLATE</u> -dense grained gray to green rock. Banding @ 90° to core. Some pyrrhotite and chalcopyrite on slip planes @ 30° to core. May be top of Cobalt formation.						
991.0' 1067.0'	<u>IMPURE QUARTZITE</u> with bands of grit showing fragments up to 1/2".						

Log By **E. L. MacVeigh**  
 for R. L. MacVEIGH

# DIAMOND DRILL RECORD

Hole No. <b>7</b>	Sheet No. <b>2</b>	Coordinates Collar	Total Depth
Property <b>Pickle Crow - Pardo</b>	Drilled by <b>Casseron J. De</b>	Lat. _____	Ft. of Core Recovered _____
Date Begun _____	Date Finished _____	Elev. Collar _____	% Recovery _____
Contractor's Footage _____	Working Place _____	Bearing _____	Size Bit Used _____
		Angle _____	Size Core _____
		Working Place _____	

Depth Feet	Formation	Sample No.	Width	Ozs. Au.	% Cu.	% Ni.	
991.0'	(cont) Cobalt Formation. Slip 2						
1067.0'	45° to core.						
1067.0'	<u>IMPURE QUARTZITE</u> -hard, glossy rock, dense						
1080.0'	grained with banding (Y) 45° to core.						
1080.0'	<u>SLATE</u> -dense grained slaty rock. Thin						
1141.0'	banding @ 45° to core. Banding shows subsidence in varve banding.						
1141.0'	<u>FRAGMENTAL MHD</u> -showing silicification						
1162.6'	and fragments to 1/2". Few quartz pebbles and some pyrite.						
1162.6'	<u>MISSISSAQUI QUARTZ PEBBLE CONGLOMERATE</u>						
1168.1'	well pyritized showing quartz pebbles up to 1".						
	SAMPLES: 1162.6' - 1165.0'	12	2.4'	Tr	--		.006
	1165.0' - 1168.1'	13	3.1'	.005	--		.002
1168.1'	<u>IMPURE QUARTZITE</u> -showing some pyrite						
1172.5'							
1172.5'	<u>QUARTZ PEBBLE CONGLOMERATE</u> -well						
1177.8'	mineralized with quartz pebbles to 1".						
	SAMPLES: 1172.5' - 1177.8'	14	5.3'	.005	--		.003
	shows massive pyrite up to 2.5".						
1177.8'	<u>IMPURE QUARTZITE</u> -silicified with						
1197.5'	some stringers of pyrite.						
1197.5'	<u>CONGLOMERATE</u> -irregular fragments up						
1207.5'	3" in quartzite.						
1207.5'	<u>IMPURE QUARTZITE</u> -few pyrite streaks						
1221.5'							
1221.5'	<u>QUARTZ PEBBLE CONGLOMERATE</u> -some						
1225.0'	pyrite.						
1225.0'	<u>IMPURE QUARTZITE</u>						
1233.0'							

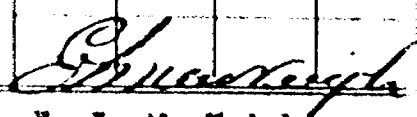
Log By

for E. L. McVEIGH

# DIAMOND DRILL RECORD

Hole No. <b>7</b>	Sheet No. <b>3</b>	Coordinates Collar	Total Depth
Property <b>Pickle Crow - Pardo</b>	Drilled by <b>Cameron D. D.</b>	Lat.	Ft. of Core Recovered
Date Begun	Date Finished	Elev. Collar	% Recovery
Date Published	Contractor's Footage	Bearing	Size Bit Used
		Angle	Size Core
		Working Place	

Depth Feet	Formation	Sample No.	Width	Ozs. Av.	% Ca.	% Ni.	Grains
1233.0'	<u>QUARTZ PEBBLE CONGLOMERATE - well</u>						0.0
1235.0'	<u>crystalline.</u>						
	SAMPLE 1233.0' - 1235.0'	23	2.0'	Tr	--		.009
1235.0'	<u>IMPURE QUARTZITE</u>						
1239.0'							
1239.0'	<u>GREENISH ORBENSTONE-carbonated &amp;</u>						
1292.0'	<u>sheared @ 30° to core. Short</u>						
	<u>venicular section @ 1068.0'.</u>						
	HOLE END - 1292.0'						

  
 Log By **E. L. McVeigh**  
 for **E. L. McVEIGH**

PICKLE CROW GOLD MINES LIMITED

WORK RECORDING

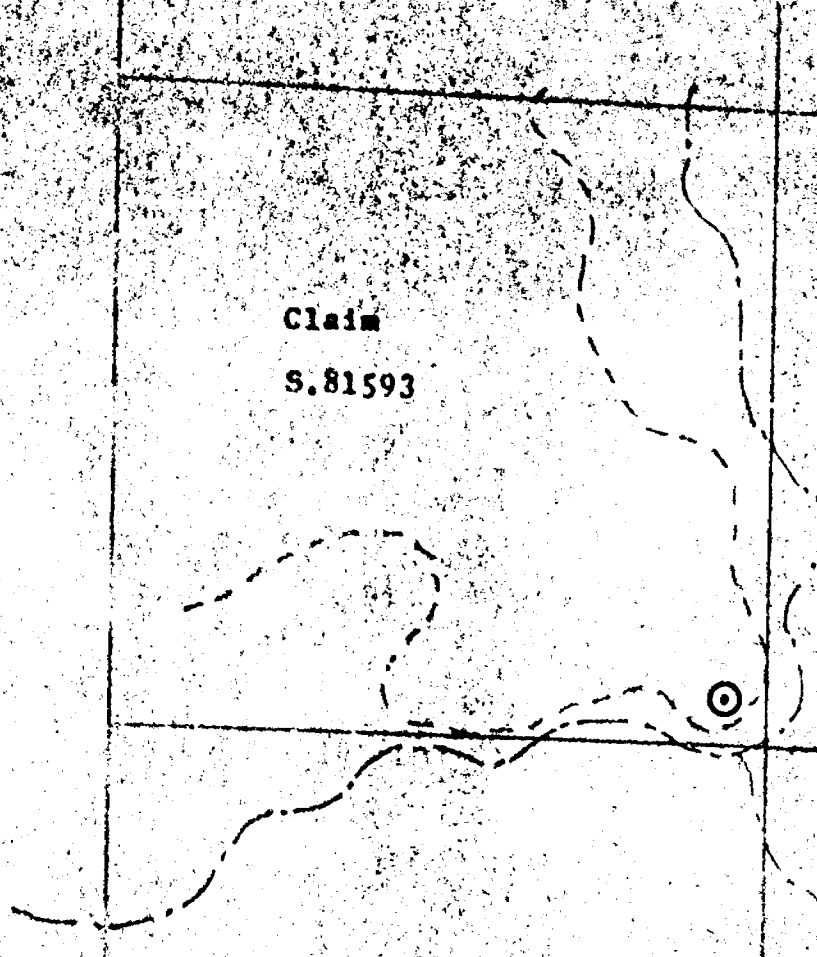
Map scale 1" to 200'



McNISH TOWNSHIP

PARDÓ TOWNSHIP

Claim  
S. 81593



Diamond Drill Hole  
No. 7  
Depth = 1,292.0'  
Angle - vertical

for contiguous claims 8-81331-52-53-56-57-58  
8-81591-92-93-94-95-96-97-98-99  
8-85387-88  
8-89974 to 00000

December 12, 1956  
E. L. MacVeigh

PARDO TOWNSHIP, TEMAGAMI MINING AREA - ONT.

Scale: 1 inch = 100 feet

COLLAR N 17

1" = 100 Ft

East

PICKLE CROW GOLD MINES L.  
D D HOLE #7

DIP  
Vertical of collar

LOCATION

4900' N 60° W of dam at foot  
of Silver Lake (175' N of road junction)  
Claim S 81593

LEGEND

Lorrain Series Sediments

Quartzite with local quartz pebble strings

Cobalt Series Sediments

Slate, graywacke, conglomerate and grit

Mississagi Series Sediments

Slate, graywacke and quartzite

Mineralized quartz pebble conglomerate

Keewatin Series

Volcanics and sediments

quartz pebble band

Lorrain quartzite

Quartz pebble band  
Quartz pebble band, some pyrrhotite

Assorted pebbles

Assorted pebbles

ten quartz pebbles

Slate (dense grained, grey massive rock)

Impure quartzite with grit bands  
(Bottom of Cobalt Series?)

Impure quartzite (Hard, glossy rock)

Slate (Thin banding at 45° to core)

Fragmental bed (Silicification and fragments up to 1/2")  
Mississagi quartz pebble conglomerate (well pyritized)  
Impure quartzite  
Quartz pebble conglomerate (with stringers of pyrite)  
Impure quartzite (with stringers of pyrite)  
Conglomerate (irregular fragments in quartzite)  
Impure quartzite (few pyrite streaks)  
Quartz pebble conglomerate (Some pyrite)  
Quartz pebble conglomerate (well pyritized)

Keewatin greenstone (Carbonated and sheared @ 30° to core)  
END of hole 1292.0'

1162.6'	2.0' Th Au 0.006% 40g
↓	3.1' Th Au 0.005% 40g
73' APPROX.	5.3' Th Au 0.003% 40g
↓	
1235.0'	2.0' Th Au 0.009% 40g

# DIAMOND DRILL RECORD

Hole No. **8** Sheet No. **1**  
 Property **Pickle Crow-Pardo**  
 Drilled by **C. J. C. C.**  
 Date Begun **Nov. 10, 1936**  
 Date Finished **Nov. 21, 1936**  
 Contractor's Footage

Coordinates Collar  
 Lat. \_\_\_\_\_ Dep. \_\_\_\_\_  
 Elev. Collar \_\_\_\_\_  
 Bearing **Vertical**  
 Angle **90°**  
 Working Place **Claim B. 81591**

Total Depth **650.0'**  
 Ft. of Core Recovered \_\_\_\_\_  
 % Recovery \_\_\_\_\_  
 Size Bit Used \_\_\_\_\_  
 Size Core **AXT**

Depth Feet	Formation	Sample No.	Width	Ozs. Au	% Cu	% Ni	D <sub>308</sub>
0.0'	<u>IMPURE QUARTZITE</u> -fine grained gray						
237.0'	massive rock with slips @ 60° to core, gray speckled rock. Probably Lorrain Quartzite. Few well rounded quartz pebbles. 3" quartz vein @ 147.0' no mineral. Banding (?) 30° to core. Some pyritization on slips. 1" quartz vein @ 234.0' showing pyrrhotite.						
257.0'	<u>SLATE</u> dense grained gray green rock						
327.0'	showing cleavage @ 20° to core. Pyrite on slips and in stringers through core.						
327.0'	<u>IMPURE QUARTZITE</u> -Cobalt formation						
342.0'	<u>COBALI CONGLOMERATE</u> -granite pebbles						
368.0'	up to 2" in fine grained matrix. Mostly small cherty pebbles less than 1" in diameter.						
368.0'	<u>IMPURE QUARTZITE</u>						
411.0'	<u>ORIT</u> angular fragments with few						
415.5'	pebbles up to 1" at base.						
415.5'	<u>IMPURE QUARTZITE</u> -gray						
475.0'	<u>SLATE</u> -dense grained gray to green						
511.5'	rock showing cleavage @ 60° to core.						
511.5'	<u>IMPURE QUARTZITE</u> -few quartz fragments						
534.5'	in speckled gray rock.						
534.5'	<u>MISSISSAQUI QUARTZ PEBBLE CONGLOMERATE</u>						
575.0'	well pyritized matrix with rounded quartz pebbles up to 1".						
	SAMPLES: 534.3' - 539.2'	16	4.9'	.005	--		.004

Log By **E. L. MacVeigh**  
 for **E. L. MacVEIGH**



# DIAMOND DRILL RECORD

ID# 8  
 Property **Finkle Crow-Pardo**  
 Drilled by **CAMERON**  
 Date Begun  
 Date Finished  
 Contractor's Postage

Sheet No **2**

Coordinates Collar  
 Lat  
 Elev Collar  
 Bearing  
 Angle  
 Working Place

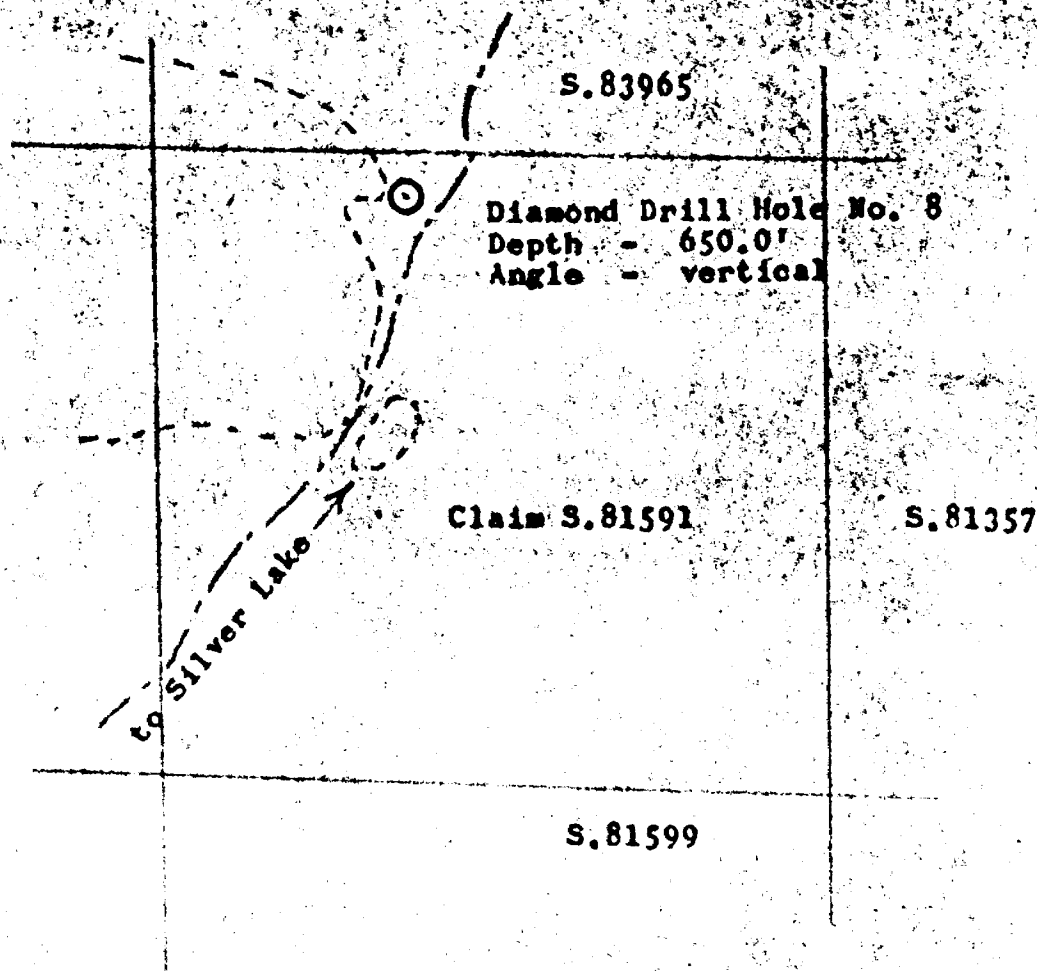
Dep.

Total Depth  
 Ft of Core Recovered  
 % Recovery  
 Size Bit Used  
 Size Core

Depth Feet	Formation	Sample No.	Width	Ozs Au	% Cu	% Ni	Grains
534.9'	(cont)	SAMPLES: 543.6' - 546.2'	17	2.6'	Tr	--	0.006
573.0'		550.7' - 555.0'	18	4.3'	.035	--	.006
		555.0' - 560.0'	19	5.0'	.05	--	.002
		560.0' - 565.0'	20	5.0'	.005	--	.006
	less pyrite from 565' on.						
		SAMPLES: 565.0' - 570.0'	21	5.0'	.005	--	.004
		570.0' - 575.0'	22	5.0'	Tr	--	.001
575.0'	<u>IMPURE QUARTZITE</u> with narrow grit						
575.5'	bands and some pyritisation. 6" well mineralised conglomerate						
	575.5' - contact.						
575.5'	<u>KANWATIN GREENSTONE</u> -carbonated and						
650.0'	sheared, greenish rock sheared at 60° to core. Probably volcanic. some pyrite on						
	HOLE END - 650.0'						

*Emuel*

Log By **R. L. McVeigh**  
 for **B. L. McVEIGH**



PICKLE CROW GOLD MINES LIMITED

WORK RECORDING

PARDO TOWNSHIP

for contiguous claims    8.81351-52-53-56-57-58  
                                   8.81591-92-93-94-95-96-97-98-99  
                                   8.89387-88  
                                   8.89974

December 12, 1956  
 E. L. MacVeigh

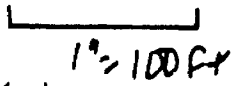
VERTICAL SECTION OF

D.D. HOLE N° 8

PICKLE CROW GOLD MINES LTD.

PARDO TOWNSHIP, TEMAGAMI MINING AREA - ONT.

Scale: 1 inch = 100 feet



COLLAR N° 8 (vertical dip)

East

surface

LOCATION

S400; N29°W of dam at foot of Silver Lake (75'W of road approx)

LEGEND

Lorrain Series Sediments

Quartzite with local quartz pebble strings

Cobalt Series Sediments

Slate, greywacke, conglomerate and grit

Mississagi Series Sediments

Slate, greywacke and quartzite

Mineralized quartz pebble conglomerate

Keewatin Series

Volcanics and sediments

Impure quartzite (few well rounded quartz pebbles)

Slate (Dense grained)

Impure quartzite (Cobalt formation)

Cobalt conglomerate (Granite pebbles up to 2")

Impure quartzite

Grit (Angular fragments up to 3" at base)

Impure quartzite (Grey)

Slate (Dense grained gray to green)

Impure quartzite (few quartz fragments)

Mississagi quartz pebble conglomerate (Well pyritized)

Impure quartzite (Some pyrite narrow grit bands)

Keewatin greenstone (Carbonated and sheared. Shearing at 60° to core)

End of hole, 650.0'

NOTE:

Depth of Mississagi Quartz Pebble Conglomerate

534.5' to 575.0' (40.5' thickness of bed)

SAMPLES

49.2	0.0030	Au	0.004%	U <sub>3</sub> O <sub>8</sub>
50.1	0.0035	Au	0.006%	U <sub>3</sub> O <sub>8</sub>
51.0	0.0035	Au	0.006%	U <sub>3</sub> O <sub>8</sub>
52.1	0.0035	Au	0.006%	U <sub>3</sub> O <sub>8</sub>
53.1	0.0035	Au	0.006%	U <sub>3</sub> O <sub>8</sub>
54.1	0.0035	Au	0.006%	U <sub>3</sub> O <sub>8</sub>
55.1	0.0035	Au	0.006%	U <sub>3</sub> O <sub>8</sub>
56.1	0.0035	Au	0.006%	U <sub>3</sub> O <sub>8</sub>
57.1	0.0035	Au	0.006%	U <sub>3</sub> O <sub>8</sub>

S-81356 Lot 11 Con 4  
57 " " " "  
58 " " " "

S-81593 NW $\frac{1}{4}$  of N $\frac{1}{2}$  Lot 12 Con 3.

81591 NE $\frac{1}{4}$  of S $\frac{1}{2}$  Lot 12 Con 4.

S-81603 NE $\frac{1}{4}$  S $\frac{1}{2}$  Lot 10 Con 5

T 42033 SE $\frac{1}{4}$  NE $\frac{1}{2}$  Lot 11 Con 3

12-1-242

S. 89974 SE $\frac{1}{4}$  S $\frac{1}{2}$  Lot 10 Con 5

McNISH Twp.

81593

3
81358
5
81357
5
81386

42022

91603
89774
89775
85385



PARDO Twp.



B.7