



41J01NE0021 0010E1 SALTER

010

Diamond Drilling

Township of Salter

Report N^o: 13

Work performed by: L. Gatcher

Claim N ^o	Hole N ^o	Footage	Date	Note
S 94979	1-S	165.8'	Aug/56	
	2-N	141.6'	Sept/56	
	<u>3-S</u>	<u>278.5'</u>	Oct/57	
TOTAL: 3 DH		585.9'		

Notes:

DIAMOND DRILL RECORD

Hole No. 1-5 Sheet No. 1

Property Claim H S-94979
 Location N.E. 1/4 Sec. 14 Twp. 50 N. E.
 Latitude 12° South 20° East Base Line
 Departure
 Bearing South 20° East

45° Dip 45°

 Total Footage 165.8'

Elev. Collar 5'
 Datum 647' West of O. Line
 Date Started Aug 31/56
 Date Completed Sept 8/56
 Drilled by L. C. Gutscher
 Logged by J. Gutscher

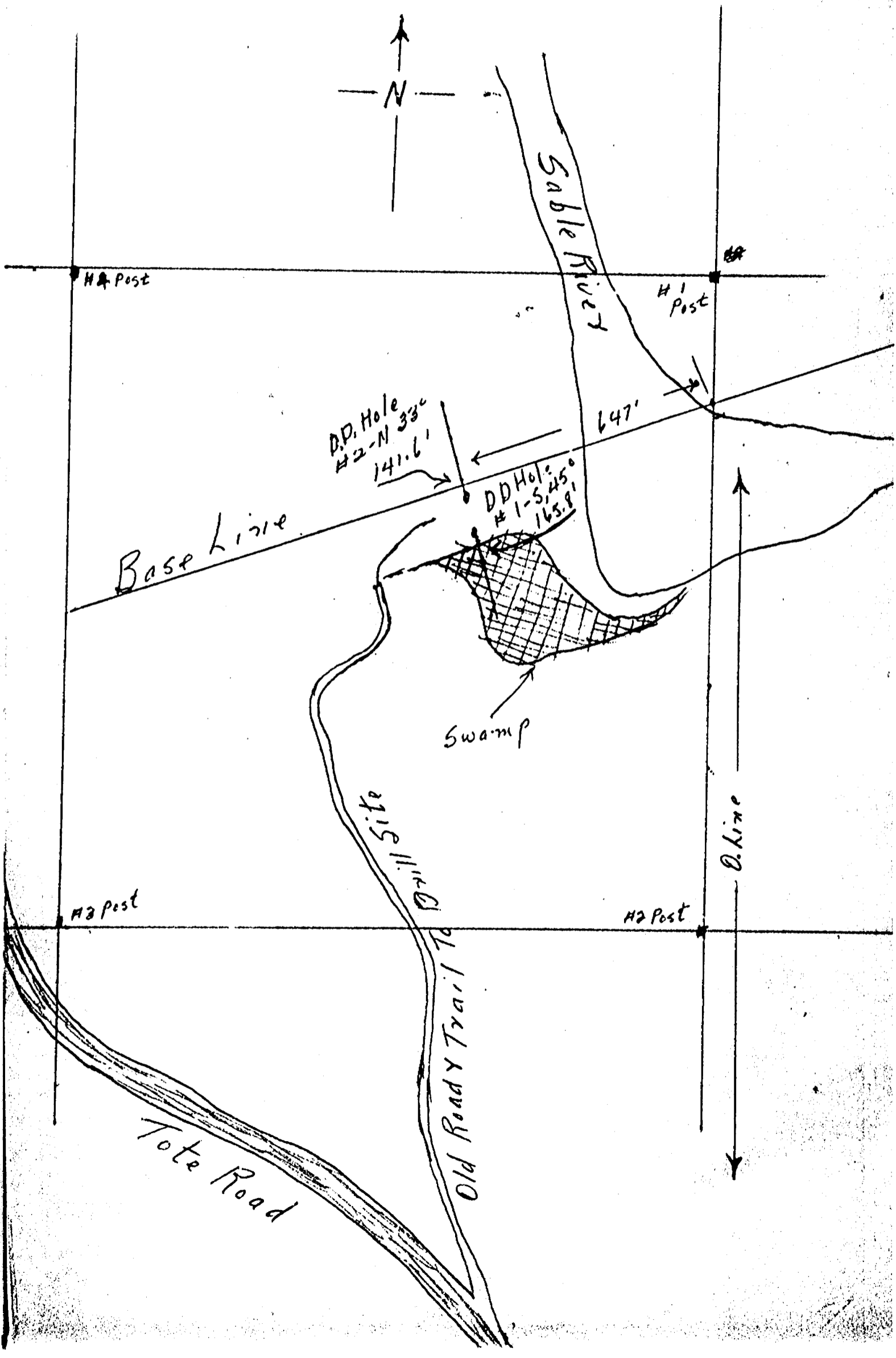
Footage		Formation	Sample Number	Sample Footage	Sample Width	Gold Sample	Gold Sludge	Remarks
From	To							
0	5'	Casing						
5'	165.8'	Schistose Graywacke Throughout With Small Quartz Stringers. Mineralized with Pyrite, Pyrrhotite, And Small Amounts of Disseminated Chalcopyrite, Also Small Amounts of Hematite in Seams.						

Date of Examination Sept 22/56

Loyal C. Gutscher

L.E.S. Gurnea

Sketch Of Claim # 5 - 94979 & Location Of Diamond Drill Site Dist. Of Sudbury, Twp Salter



SALTER TWP.

DIAMOND DRILL RECORD

Hole No. 3-S Sheet No. 2

Property Gutcher-Loyal Co.
 Location Salter Twp.
Massey Ont.

Latitude 40.6' N.
 Departure 532' W.
 Bearing S. 15° W.

42° Dip 38°

Elev. Collar 582' West No. 2 Hole
 Datum S.E. Part N.E. 1/4 Sec 14, Salter H.S. 9497
 Date Started Oct 28 - 1957
 Date Completed Nov 12 - 1957
 Drilled by L.C. Gutcher
 Logged by L.C. Gutcher

Total Footage 278.5'

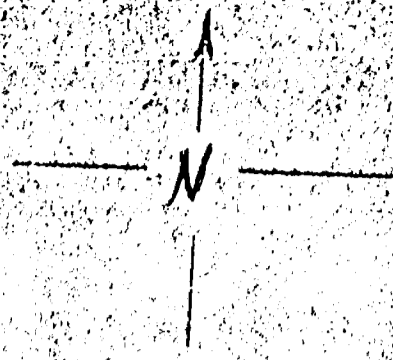
Footage		Formation	Sample Number	Sample Footage	Sample Width	Gold Sample	Gold Sludge	Remarks
From	To							
<u>0</u>	<u>5'</u>	<u>Casing</u>						
<u>5'</u>	<u>39.6'</u>	<u>Sheared Mineralized Greenstone</u>						
<u>39.6'</u>	<u>81'</u>	<u>Viabase</u>						
<u>81'</u>	<u>278.5'</u>	<u>Sheared Mineralized Greywacke</u>		<u>1/25</u>				
	<u>278.5'</u>	<u>Bottom of Hole</u>						

Cores Stored At
J. Gutcher Core Shed
At Massey, Ont.

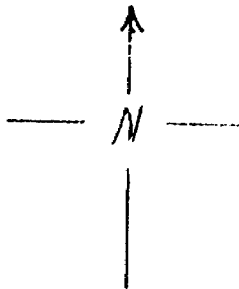
Date of Examination _____

Loyal C. Gutcher

Twp. Salter
Dist. Sudbury



Claim # S-94979
S.E. Part NE 1/4 Sec. 14
Twp Salter, Dist. Sudbury.



S-160480

(P)

S-100481

#4 Post

Blazed Line

#1 Post

Rock Trenches

Base Line
532'

DD Hole #2-N 1956

DD Hole #1-S 1956

Sable River

S-160479

DD Hole #3-S 1957

406'

Swamp

Road + Trails to Work Sites

S-94980

Blazed Line

Blazed Line

S-94979

Zero Line

#3 Post

Blazed Line

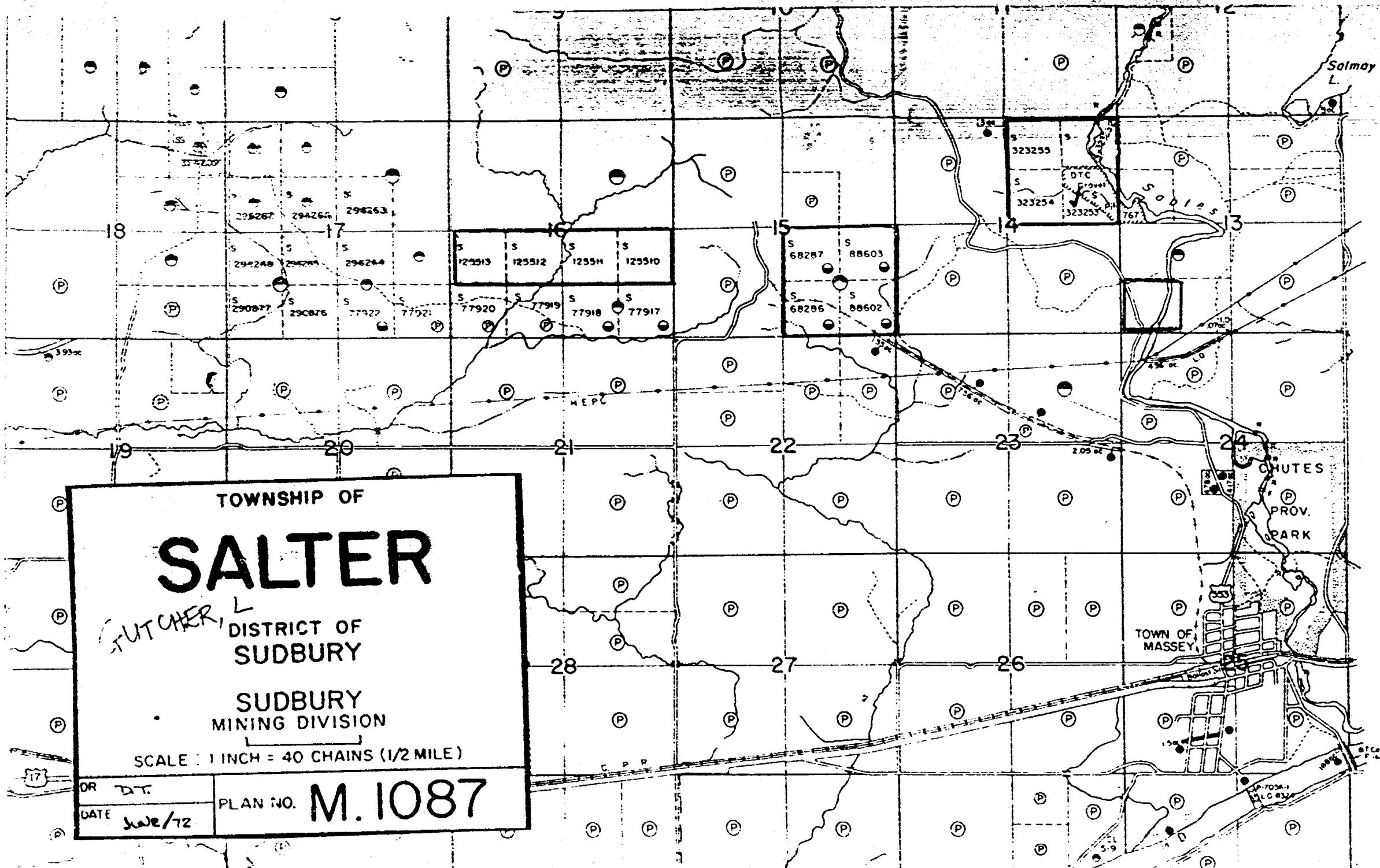
#2 Post

(P)

(P)

S-94981

North of Mussey Tote Road



MAY TP. M.860

TOWNSHIP OF

SALTER

FUTCHER, L.
DISTRICT OF
SUDBURY

SUDBURY
MINING DIVISION

SCALE: 1 INCH = 40 CHAINS (1/2 MILE)

DR	DT	PLAN NO. M.1087
DATE	3/22/72	