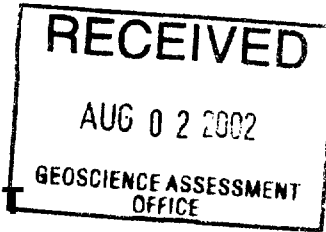


2.24005



ASSESSMENT WORK REPORT

**Mining Claim SSM1235007
Lefroy Township, District of Algoma**

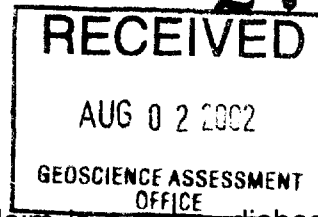
Index of Submission

2.24367

Authorization Letter Letter stating writer's authority to Submit Assessment Work
Declaration of Assessment Work Two copies of Form 0241 are enclosed
Statement of Costs Two copies of Form 0212 are enclosed.
Claims Sketch Two copies of a drawing showing the locations samples were collected.
Work Report Two copies of the Work Report indicating sampling & crushing process and their results.
Details of Assessment Credit Claim Detailed breakdown of items included in the Assessment Credit Claim calculation.



2.24005



Work Report for Claim 1235007

The bedrock material located within this claim is a gabbro diabase which may be suitable as a specialty aggregate in the production of Super Pave Hot Mixed Asphalt Pavement. The Super Pave specifications require the aggregate to be a cubical shape with a low percentage of flat and elongated particles. To determine if the diabase material will meet the Super Pave specification samples have to be processed using conventional crushing equipment and then compared to the specifications.

Field samples were gathered by rubber tired front end loader on October 17th, 2000 from existing outcrops along the Township road running through the Claim. Additional samples included boulders found on the surface within the north end of the Claim. These samples were transported by truck from the Claim site to the Maple Ridge Pit located 23 kilometres east where a crusher was scheduled to be working in the near future.

On December 19th, 2000 Gilbertson was set up in the Maple Ridge Pit producing HL1 stone. Gilbertson's crushing spread included a Jaw, a Cone and a Triple Roll crusher and two 5 x 20 inclined screen decks. We saw an opportunity to process the rock collected earlier at the Claim Site when Gilbertson crusher was cleaned out to complete a repair.

At about 8 a.m. approximately 65 tonne of rock collected at the Claim site was put through the crusher. The crushed material was moved to a separate stockpile area so it could be sampled by the QC lab. A quick visual comparison could not detect any difference between the approved HL1 stone and the HL1 produced from the Claim material. The crusher resumed normal production with Maple Ridge feed within an hour and a half.

The samples were sieved for gradation and callipered for flat & elongated by the Smelter Bay QC lab. Test results showed the material conformed to the specification of Super Pave for the physical properties tested.

2.24367

Work Completed on Claim 1235007

Gather Samples

In October 2000 samples of the bedrock were collected. A Caterpillar 980G rubber tired front end loader traveled to the site and loosened rock from two existing cuts made through the bedrock during the construction of the township road which crosses the claims. Boulders were collected from the ground surface in various locations as well. Two tandem axle dump trucks were used to haul the rock from the claim site to the Maple Ridge Pit where it was stockpiled for later testing.

Crush Samples

In December 2000 the rock collected at the claim site was put through a crusher processing other material for sale at the Maple Ridge Pit. The crusher was brought in to produce aggregate used in specialty road pavements and we wanted to know if the material from the claim site produced a product meeting the same specifications. The crusher had been cleared of the Maple Ridge feed and the claim rock was run through and put into a separate pile. The sample crushing was completed over a two hour period. The pile was removed and the crusher resumed normal production activities.

Examine Samples

The crushed samples were examined to determine if the material crushed into cubicle shapes and calculate the percentage flats & elongated (any particle with its narrowest dimension less than a quarter the longest dimension).

Refresh Boundary Lines

A legal surveyor was hired to verify the location of the claim lines. All sides of the claim abut private land it was important that we did not encroach onto the private lands. Although field work costs exceeded \$2,300 we are claiming only the industry standard cost (\$150 per kilometre).

2.24005

Costs for Assessment Credit on Claim 1235007

Gather Samples

October 17, 2000

Loader Cat 980G	gather samples	6.5 hours	\$115.00 per hour	\$747.50
Loader Cat 980G	travel	2.5 hours	\$100.00 per hour	\$250.00
T/A Dump Truck	haul 2 loads	4.5 hours	\$ 49.00 per hour	\$220.50
T/A Dump Truck	haul 1 load	3.0 hours	\$ 49.00 per hour	<u>\$147.00</u>
				\$1,365.00

Crush Samples

December 19, 2000

Gilbertson Crusher	crush samples	65 tonne	\$ 7.00 per tonne	\$455.00
Loader Cat 980G	move stockpile	1.5 hours	\$115.00 per hour	<u>\$172.50</u>
				\$627.50

Examine Samples

December 20, 2000

Smelter Bay Technician	test samples	3.0 hours	\$ 45.00 per hour	\$135.00
------------------------	--------------	-----------	-------------------	----------

Refresh Boundary Lines

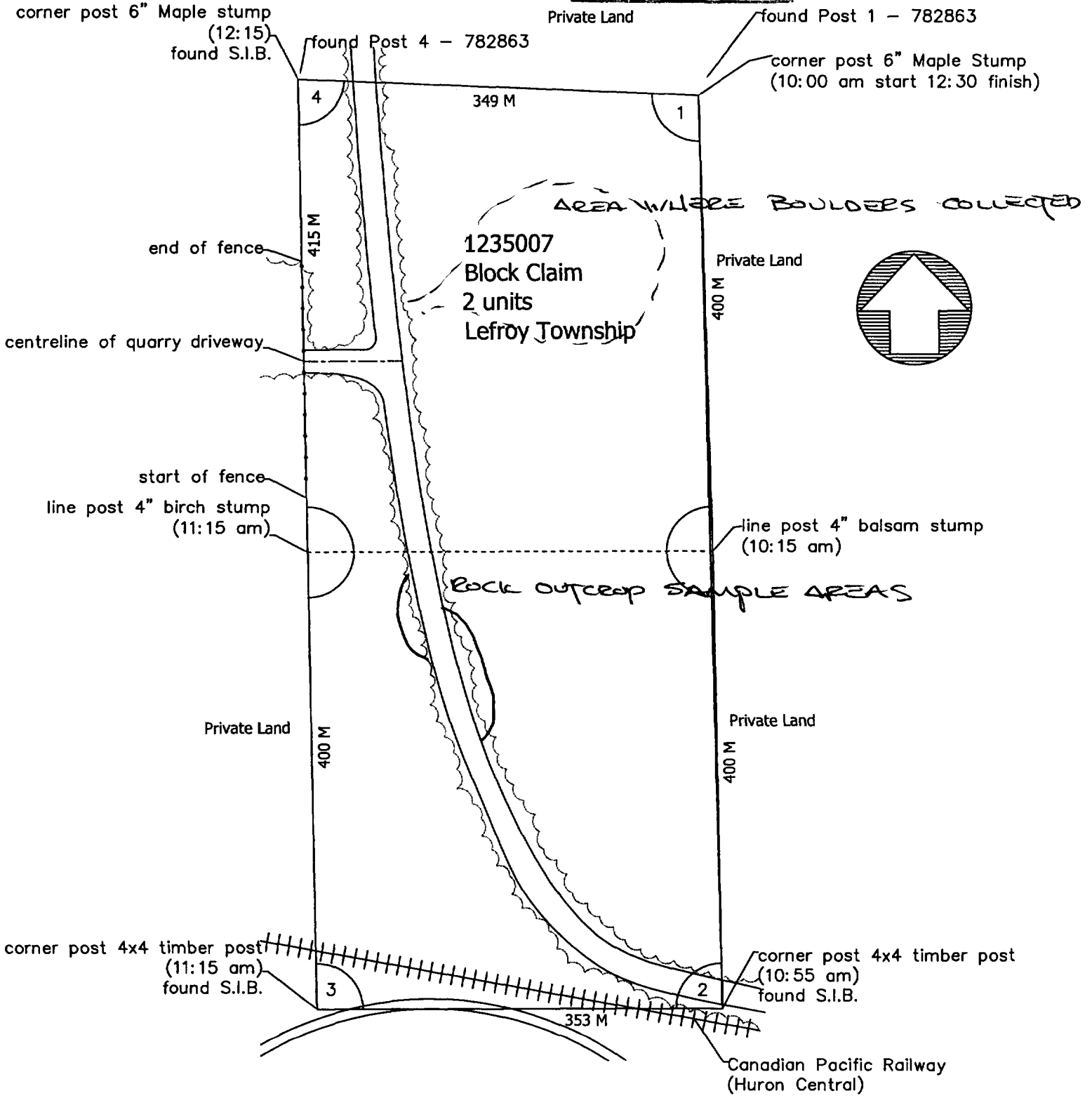
Summer 2001

Tulloch Refresh Boundary Lines		2.3 kilometres	\$150.00 per km	\$345.00
--------------------------------	--	----------------	-----------------	----------

2.24387

RECEIVED
AUG 02 2002
GEOSCIENCE ASSESSMENT
OFFICE

2.2400



2.24367

Date: 2002-OCT-17

GEOSCIENCE ASSESSMENT OFFICE
933 RAMSEY LAKE ROAD, 6th FLOOR
SUDBURY, ONTARIO
P3E 6B5

THE WARREN PAVING & MATERIALS GROUP
LIMITED
72 ASHWARREN ROAD
DOWNSVIEW, ONTARIO
M3G 1Z6 CANADA

Tel: (888) 415-9845
Fax: (877) 670-1555

Submission Number: 2.24367
Transaction Number(s): W0250.01596

Dear Sir or Madam

Subject: Approval of Assessment Work

We have approved your Assessment Work Submission with the above noted Transaction Number(s). The attached Work Report Summary indicates the results of the approval.

At the discretion of the Ministry, the assessment work performed on the mining lands noted in this work report may be subject to inspection and/or investigation at any time.

If you have any question regarding this correspondence, please contact STEVEN BENETEAU by email at steve.beneteau@ndm.gov.on.ca or by phone at (705) 670-5855.

Yours Sincerely,



Ron Gashinski
Senior Manager, Mining Lands Section

Cc: Resident Geologist

The Warren Paving & Materials Group Limited
(Claim Holder)

James William Clark
(Agent)

Assessment File Library

The Warren Paving & Materials Group Limited
(Assessment Office)

