



41J08NE0001 2.14543 SHIBANANING

010

Report on Decorative
Stone Sampling
and Prospecting
Shibananing Twp.
1992



41J08NE0001 2.14543 SHIBANANING

010C

TABLE OF CONTENTS

	Page Number
DECORATIVE STONE, SHIBANANING TWP.	
Summary	12
Property Location, Description and Access	13
Assay Results	13
Traverse Locations	14
Sample Locations	15
Geology	16
Economic Potential	17
Assay Certificates	18, 19
Prospecting Daily Log	20
Claim Location Sketch	21

SUMMARY OF SHIBANANING TWP. PROPERTY

The initiative in Shibananing Township was initially in search of PGE potential within the East Bull Lake Intrusion, but the true value of the project turned out to be dimensional stone for decorative purposes. The area of interest is a glomeroporphyritic unit within the Gabbro. The estimated yield of this deposit is about one half million cubic metres of decorative stone.

Three days of prospecting and sampling were carried out in the area and a single claim # 1118378 was staked in August of 1991. The assay results from the grab samples taken indicate the presence of anomalous values of platinum and palladium in the area.

In November of 1991 a tentative option agreement with foreign investors was signed and further exploration work relating to the decorative stone potential is expected to occur this following year.

PART III: DECORATIVE STONE, SHIBANANING TWP.
LOCATION, DESCRIPTION AND ACCESS

Shibananing Twp., Sudbury Mining Division, once known as Twp. #118 is located approximately 12 miles North of the town of Webbwood, Ont. The area can be accessed by a logging road along the East boundary of the Twp. and can be located by taking Agnew Lake Road North from Webbwood on Hwy. 17W. There are a few older trails and a hydro corridor which can be travelled, but for the most part access to the interior of the Twp. is limited. A float plane was used for three days of prospecting since the area of interest is inaccessible by road.

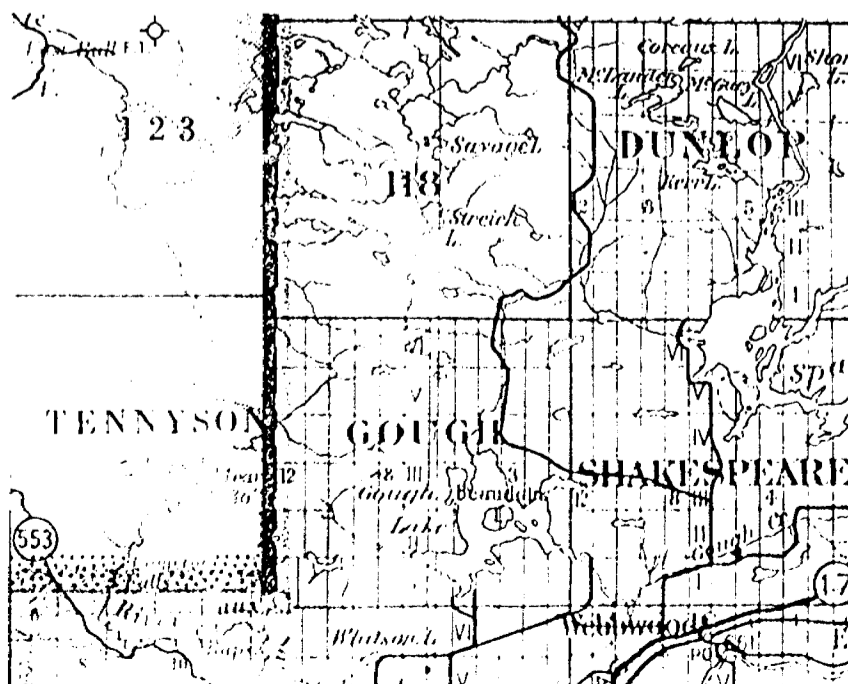
The objective of the trips was to prospect the East Bull Lake Gabbro for PGE potential. Several grab samples were taken in the gabbro along the South contact of the intrusion where it meets the granites. The sample areas are within an East/West zone of anorthositic gabbro which is somewhat mineralized with chalcopyrite and pyrrhotite. The values obtained from the samples indicates the presence of an elevated amount of palladium and anomalous gold and platinum values.

Immediately to the North of this mineralized gabbro zone lies a glomeroporphyritic anorthositic gabbro which extends for approximately 200 metres to the North and rises in elevation to form a separate outcrop. The texture of this rock is very uniform and the fracture and jointing frequency is very low.

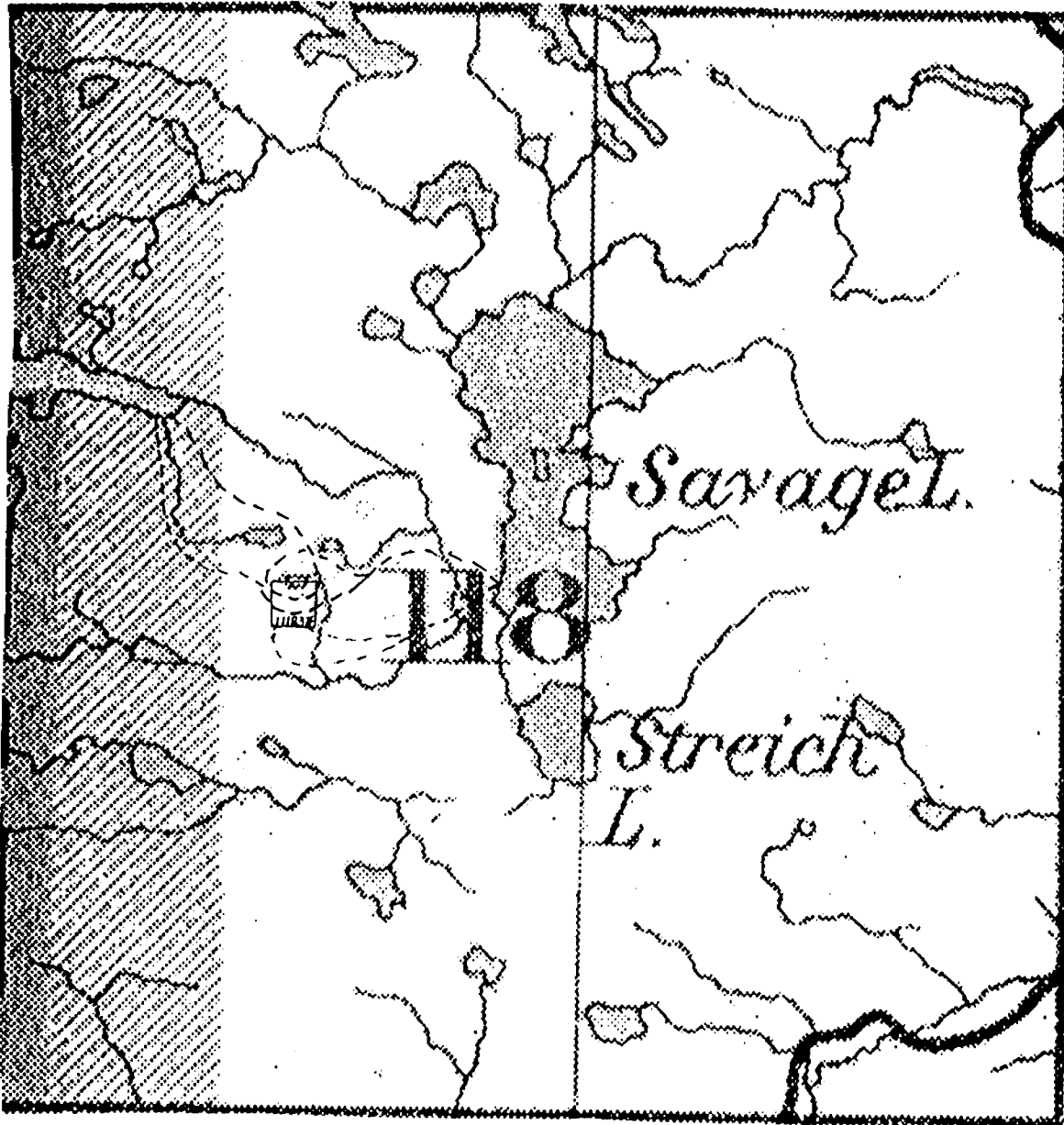
The area was staked on August 7, 1991 by a single claim #1118378 to encompass the sample areas and the glomeroporphyritic gabbro.

ASSAY RESULTS

SAMPLE #	AU ppb	PLT ppb	PLD ppb	DESCRIPTION
13904	29	43	468	medium to coarse grained
13905	24	41	561	gabbro, little to no qtz
13906	26	33	98	approx 5% sulphides
13907	49	174	1091	50-50 cp and po
13908	9	15	13	" "
13909	18	69	75	" "
13910	47	146	374	" "
13911	38	127	730	crs grd mafic gabbro
13912	70	312	1413	very altered, minor cp/po crs grd mafic gabbro blue qtz, minor cp/po angular float!

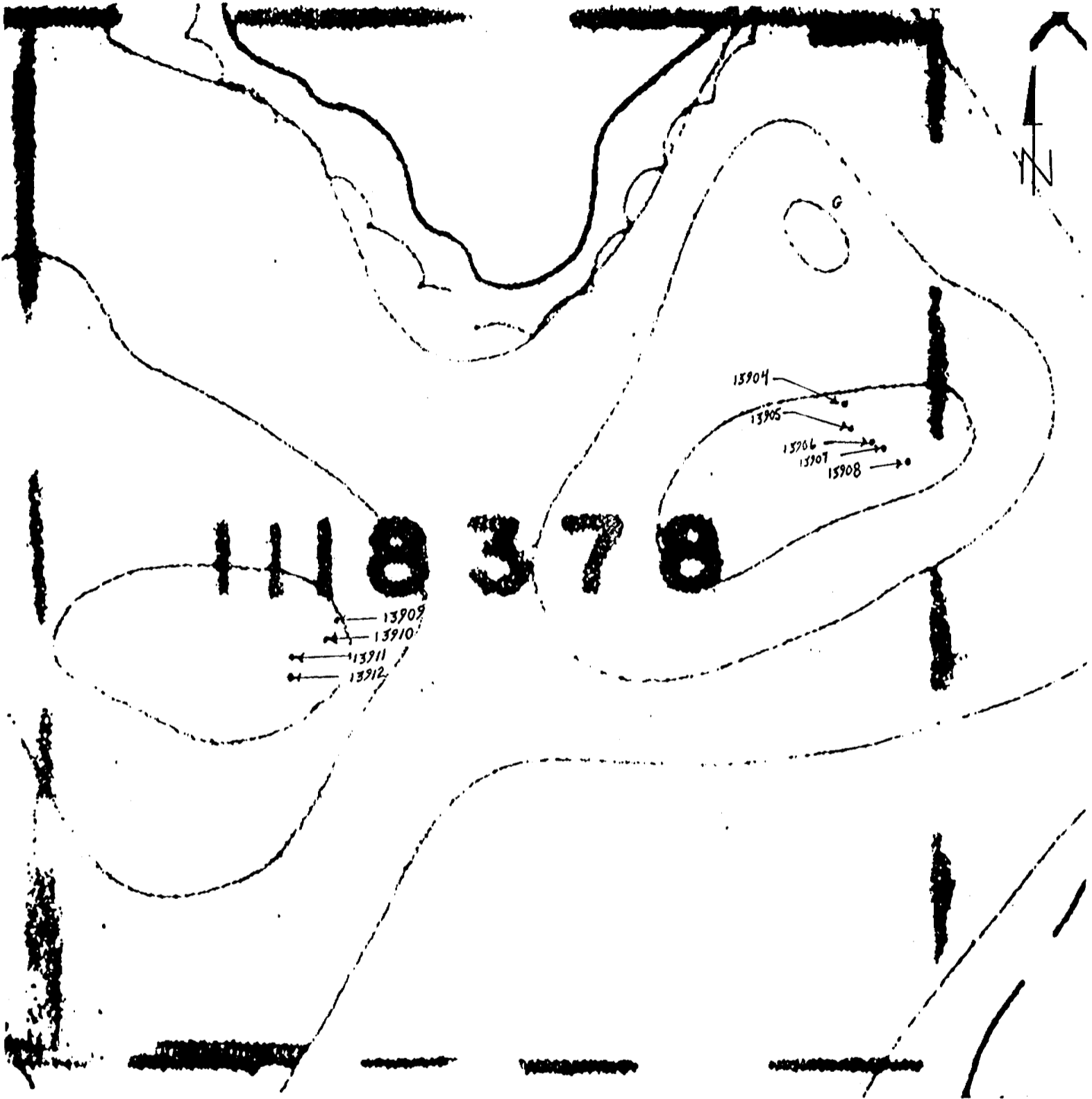


TRAVERSE LOCATIONS: SHIBANANING TWP.



Scale: 1 Inch to 1 Mile

SAMPLE LOCATIONS: SHIBANANING TWP.



Scale: 1 Inch to 175 Feet



Decorative Dimensional Stone
Shibananing Township

INTRODUCTION:

Dimensional stone continues to experience market growth. New technologies in quarrying and processing have reduced production costs substantially. Colours that continue to fare well in the market place are Black, Red and Pink. However, dimensional stone of almost any colour with an attractive and or unique texture could be economic if properly marketed.

GEOLOGY:

Commonly known as the Shakespeare - Dunlop layered gabbro - anorthosite intrusion. This intrusion occupies an area of 12 km² and is exposed immediately West and North of Agnew Lake (in Shakespeare, Dunlop and Shibananing Twps.) 6 km North of Webbwood, Ontario. It is the largest of several intrusions of its kind in these townships. Unlike the remainder which form narrow sill-like bodies along the Southern Province-Superior Province boundry, this intrusion lies 3 km to the North and is totally enclosed within Archean Granites. It intrudes the base of the Huronian sequence in the Sudbury-Elliot Lake region and is composed primarily of rock types ranging from pyroxenite to anorthosite; the intermediate members of this series are by far the most abundant.

Layers vary in thickness from a few centimeters to near 100 metres and are due to changes in the proportions of felsic and femic minerals, grain size variations and textural changes. Anorthosite consists of aggregates of glomeroporphyritic plagioclase feldspar and interstitial pyroxene. The glomeropheno-crysts are spherical to oval (2-10 cm in maximum dimension) within the central portion of each, feldspar plagioclase encloses pyroxene.

REF: James and Harris (E.M.R. Research Agreement
1135-D13-4-30-76

AREA I:

On claim No. S. 1118378, an area 125 metres X 240 metres with approximately 30 metres of elevation comprises a large deposit of glomeroporphyritic gabbro. The visible fracturing and jointing appears very low and the phenocrysts very uniform in distribution.

ECONOMIC POTENTIAL:

Quality dimensional stone enjoys a very stable and profitable position in today's marketplace. The criteria required is much less than that of a mining venture and the capital costs of development are minor in comparison.

Dimensional stone must meet the industry standards of tensile strength, flame reaction, chemical resistivity, and attractiveness. Once these requirements have been proven, the permits to quarry must then be obtained and the operation of extracting stone may begin.

The market value of a typical high quality Granite makes exploration for suitable stone quite attractive.

Example:

Raw quarry block (5'X5'X9')

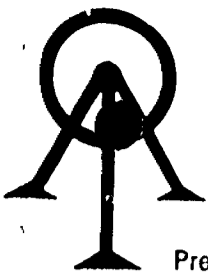
No. of 3/4" sheets per block	50
No. of square feet per sheet	32
Average market price sq/ft	\$20.00

Total market value per block

32 sq/ft X \$20 = \$640.00/sheet
50 sheets X \$640 = \$32,000.00 block

A quality quarry measuring 100 metres X 200 metres with 25 metres of elevation could produce 500,000 cubic metres or 59,665 blocks. Total market value \$1,909,280,000.00.

Given today's economic and environmental constraints, it is my recommendation that further incentives be offered for the locating and development of quality decorative stone. This type of exploration activity can only increase this province's market share in the stone industry which is only minimal at this point in time. The demands for this type of product are steadily increasing and we should be ready to respond to this new and very viable industry.



President: Dr. GEORGE DUNCAN, M.Sc., Ph. D., C. Chem (Ont.), C. Chem (U.K.), M.C.I.C., M.R.S.C., A.R.C.S.T.

40456

Certificate of Analysis

Mr. Mitchell Turcott
 Agnew Lake Lodge Ltd.
 P.O. Box 70
 Webbwood, Ontario
 POP 2G0

Page: 1

July 9

91

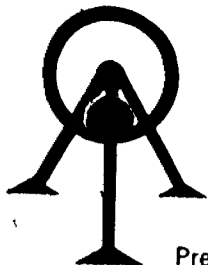
Work Order # : 910833
 Project :

SAMPLE NUMBERS		Gold	Gold	Platinum	Palladium	
Accurassay	Customer	ppb	Oz/T	ppb	ppb	
245594	13904	29	0.001	43	468	
245595	13905	24	0.001	41	561	
245596	13906	26	0.001	33	98	
245597	13907	49	0.001	174	1091	
245598	13908	9	<0.001	15	13	
245598	13908	10	<0.001	<15	15	Check



Per: _____

G. Duncan



ACCURASSAY LABORATORIES

A DIVISION OF BARRINGER LABORATORIES LIMITED, REXDALE, ONTARIO

BOX 426

KIRKLAND LAKE, ONTARIO, CANADA P2N 3J1

TEL.: (705) 567-3361

Page 19

President: Dr. GEORGE DUNCAN, M.Sc., Ph. D., C. Chem (Ont.), C. Chem (U.K.), M.C.I.C., M.R.S.C., A.R.C.S.T.

40669

Certificate of Analysis

Page #1

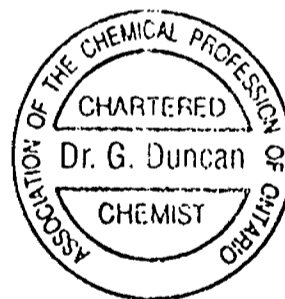
July 24

1991

Mr. Mitchell Turcott
Agnew Lake Lodge Ltd.
Box 70
Webbwood, Ontario
POP 2G0

Work Order # 910897
Project:

SAMPLE NUMBER		Gold	Gold	Platinum	Palladium
Accurassay	Customer	ppb	Oz/T	ppb	ppb
246261	13909	18	0.001	69	75
246262	13910	47	0.001	146	374
246263	13911	38	0.001	127	730
246264	13912	70	0.001	312	1413
246264	13912 check	64	0.001	330	1410



LF-30

Per: _____

G. Duncan

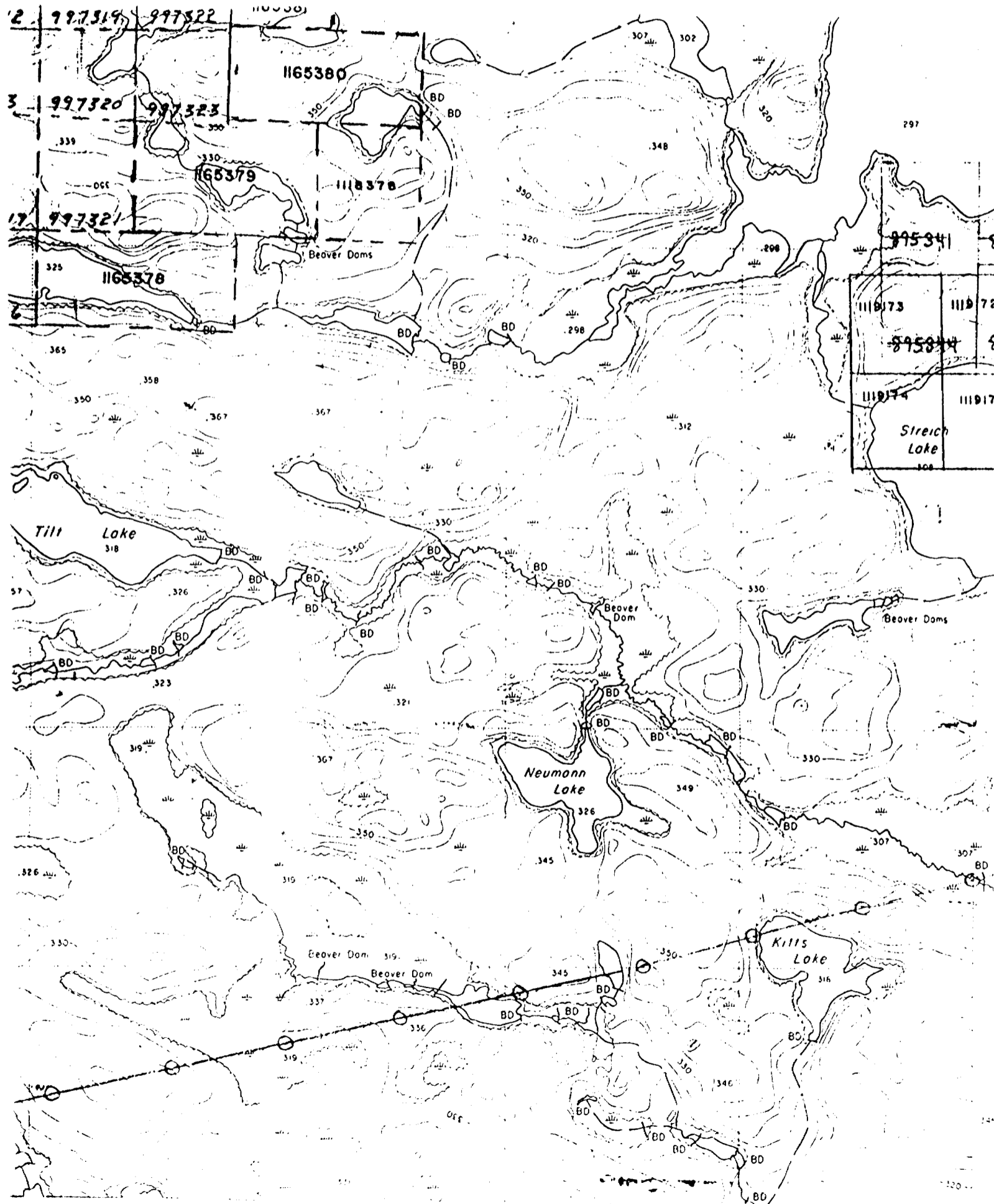
ORIGINAL

PROSPECTING DAILY LOG
SHIBANANING TWP.

Date	Work Performed
July 2	flew from Agnew Lake to Tip Lady Lake and prospected SW along the gabbro intrusion took 5 samples #13904-13908.
July 16	flew to Savage Lake and prospected West took 4 samples #13909-13912.
October 1	flew to Savage Lake and prospected South no samples taken.

CLAIM LOCATION SKETCH
SHIBANANING TWP., SUDBURY DISTRICT

Scale: 1 to 20,000





41J08NE0001 2.14543 SHIBANANING

020

Report on Decorative
Stone Samplings
and Prospecting

Porter Twp.

1992



41J08NE0001 2.14543 SHIBANANING

0200

TABLE OF CONTENTS

	PAGE NUMBER
Porter Twp., Big Swan Showing	
Summary	20
Property Location and Access	21
Description	22
Property Geology and Thin Section Description	23,23B
Work Program	24
Assay Results	25,26,26A
Traverse Locations	27
Sample Locations	28
Stripping Location, Big Swan	29
Stripping Location, Big Swan II	30
Big Swan Trenching Locations	31
Detailed Sample Locations, Big Swan	32
Assay Certificates	33-42A
Daily Prospecting Log	43
Daily Stripping and Trenching Log	43,44
B Trench Resampling, January 1992	44
Conclusions and Recommendations	45
Claim Location Sketch	46

Summary of the Porter Twp. Property

During the period from May to November 1991, the Porter Twp. program was carried out with reconnaissance prospecting, power stripping, washing, trenching and sampling. The program was completed in late November 1991.

The Porter Township property which is located within the two twelve claim contiguous blocks numbers 1118381 and 1118382 was the main focus of the OPAP program. After initial prospecting and some sampling, the claims were staked and a considerable amount of power stripping, washing and trenching was carried out on a new Copper/Gold discovery.

The property is primarily composed of quartzite, subwacke and argillaceous limestone with a gabbro intrusion cutting across the property in an East/West direction. The mineralized unit is primarily a chloritized quartz/epidote with the main sulphide being pyrrhotite, but there is also pyrite, chalcopyrite, gypsum and arsenopyrite present. The mineralized zone is somewhat intermixed with a carbonate unit that is typically bedded, but massive in some places.

The sulphide zone dubbed Big Swan appears along the South flank of the gabbro intrusive, but there is evidence of mineralization within the gabbro as well. The strike is generally 080 with an apparent dip of 60 to the South, but there is folding within the entire sequence. Big Swan is approximately 35 metres in length, 14 metres in depth and has an elevation of 6 metres. A second mineralized zone located within the gabbro and immediately to the North was only barely uncovered by stripping and the actual size and strike are as yet unknown.

The Big Swan zone can be traced approximately 50 metres to the West and another similar zone was stripped 1460 metres to the East and has been named Big Swan II which is located in the claim block number 1118381.

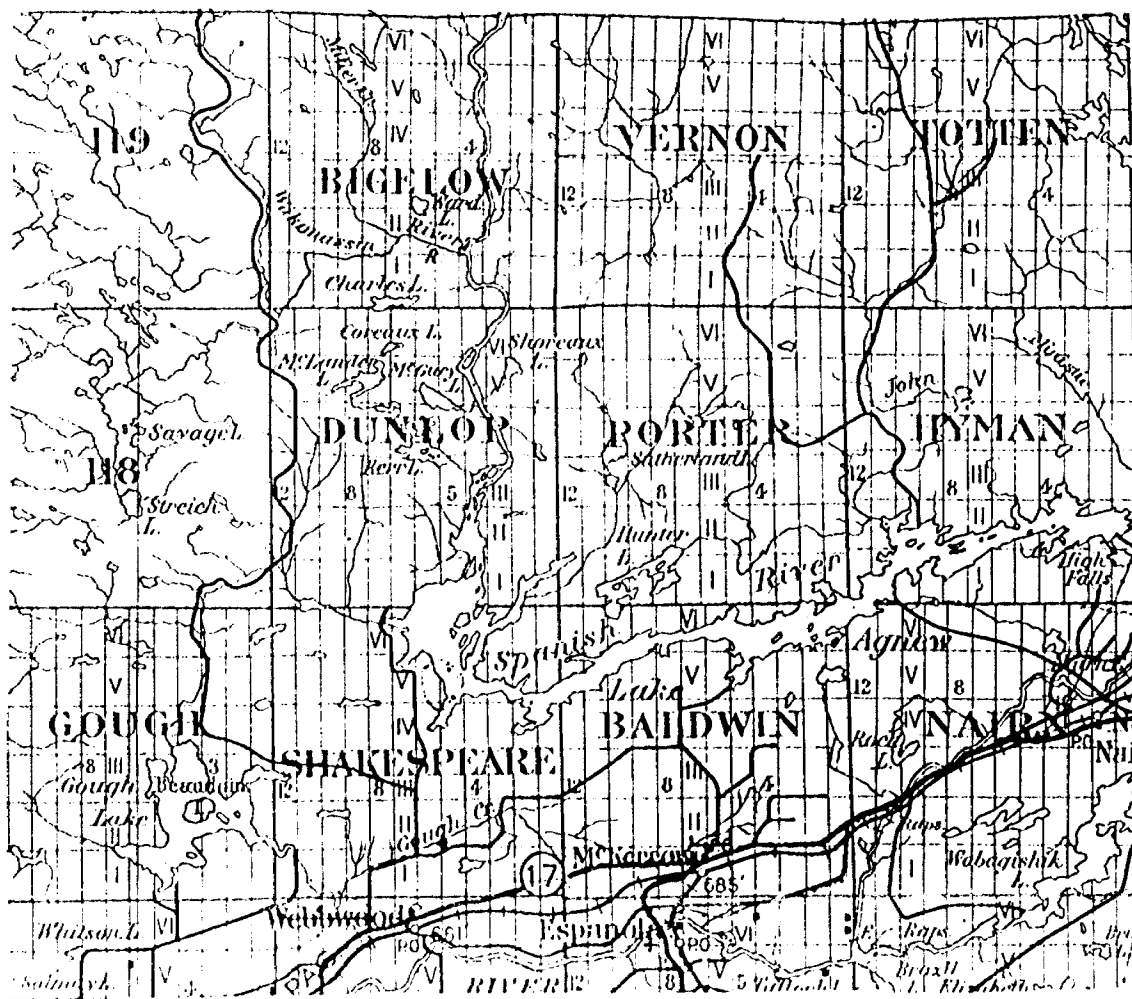
Porter Township was mapped in the late 1950's by R.M. Ginn and a report was published in 1961. There are a number of base metal showings described in the report, but this new gold showing is one of the first in the area. To date, grab samples have indicated 1% copper and 0.26 oz/ton gold with anomalous zinc and nickel values.

**LOCATION AND ACCESS
PORTER TWP.**

Porter Twp., District of Sudbury, is 40 miles West of Sudbury and approximately 7 miles North of Espanola. The township is unsurveyed and is about 10 km. square.

Road access is limited, but Hwy. 17W intersects several township roads which lead North to Agnew Lake which lies along the South boundary of Porter Twp.. Other means of access include an Ontario Hydro high tension power line corridor which can be travelled with an ATV or by floatplane, since there are numerous lakes in the area.

Porter Twp. lies in an area of general economic interest and although there are a number of base metal occurrences, there are no producing mines in the township at this time.



Scale: 1 cm to 2.5 km

DESCRIPTION
BIG SWAN, PORTER TWP.

The mineralized zone which was discovered has been named Big Swan because of its proximity to Big Swan Lake to the North. The Big Swan showing is located on the South flank of a gabbro sill. The exposed face of the showing is very steep and rises above the marshy area at the base of the outcrop quite sharply. The showing is directly North of a high tension power line by about 140 metres. Access to the area was achieved by the use of ATV's and by floatplane (see daily work logs).

Big Swan has been stripped of overburden to expose an area approximately 35 metres wide, 15 metres deep with an elevation of about 6 metres. Further stripping of the outcrop to the North was performed to expose the gabbro contact and is approximately 4 metres wide, 25 metres deep and another 3 metres in elevation. The gabbro contact was exposed as well as another mineralized zone within the gabbro intrusion. Because the area was not sufficiently stripped of overburden, the actual size and strike of this mineralized gabbro is unknown.

A continuation of Big Swan approximately 50 metres to the West was also stripped. This area is about 10 metres wide at the base, 24 metres in total depth and has an elevation of 7 metres above the lower marsh area to the South.

A second mineralized zone, Big Swan II, located 1460 metres to the East was also stripped. This area was only moderately power stripped because of its proximity to the power line. The exposed outcrop is approximately 5 metres long and 3 metres wide with no elevation to the surrounding area. This zone is extremely weathered and rust stained.

GEOLOGY
BIG SWAN, PORTER TWP.

The Big Swan showing is a mineralized zone which appears to have developed after the intrusive body with which it contacts was formed. The intrusive is a fine to medium grained gabbro with minor quartz, epidote, magnetite and phyrrotite. The stratigraphy of the area indicates that hornfels, graywacke and quartzite would be the sequence to be found South of the gabbro intrusive. The hornfels sequence would appear to be the unit which has been mineralized.

The gangue minerals of the mineralized zone are primarily epidote, quartz and some chlorite. Carbonate is present in varying amounts throughout the entire zone. The mineralization is primarily phyrrotite with chalcopryrite, pyrite and arsenopyrite present. Anomalous values of nickel, zinc and gold were also reported in the assays of grab samples taken. The mineralization appears to be in bedding planes in the host rock and can be massive to finely disseminated. There has been severe heat and pressure in the system and evidence of folding is clearly defined in the bedding planes of the outcrop.

Originally, Big Swan was thought to be a Skarn type deposit, but because the carbonate has not been completely replaced by mineralization it would seem that Big Swan may be a Replacement type deposit. The mineralization is primarily along bedding planes which adds evidence to this theory. The following is a description of the thin sections taken from the Big Swan outcrops.

THIN SECTION DESCRIPTIONS:

- TS1 metased; hornfels with massive texture (granoblastic)
no alignment of minerals
very fine grained quartz < calcite < epidote
finely laminated, probably original bedding
calcite not regularly distributed
po and cpy in bedding approx 5%
- TS2 metased; hornfels with massive texture (granoblastic)
no alignment of minerals
very fine grained quartz < calcite < epidote
finely laminated, calcite not regularly distributed
thin layer of po, cpy in stringer parallel to bedding
- TS3 porphyroblastic metased (wacke?)
very fine grained matrix with phlogopite, epidote,
calcite and minor quartz
disseminated po, cpy approx 5%

THIN SECTION DESCRIPTIONS cont.:

- TS4 very fine grained metased
 60% epidote, 40% quartz with trace calcite
 massive po approx 70 % sulphide
 10:1 po to cpy with minor py
- TS5 very fine grained thinly bedded metased(arkosic wacke?)
 60% epidote, 35% quartz minor garnet and amphibole
 syn-metamorphic sulphides mainly po with lesser cpy
 same grain size as the gangue minerals
 also post sulphides in fractures cutting the bedding
 mainly cpy with po, this is a later event
- TS6 altered metagabbro somewhat schistose
 medium grained quartz with fine grained biotite
 medium grained arsenopyrite, subhedral approx 25%
- TS7 metagabbro
 medium grained biotite, quartz and partially altered
 plagioclase being replaced by epidote
 weakly foliated with < 1% disseminated calcite
 po and minor cpy intergrown in silicates
 some replacement by biotite
- TS8 porphyroblastic metased(wacke)
 very fine grained matrix with phlogopite porphyroblasts
 phlogopite, epidote, calcite and minor quartz
- TS9 calcareous carbonate metased
 medium grained massive intergrowth of epidote > calcite
 sulphides mainly py with minor po, cpy
 pyrite invades along fractures in epidote or grows
 along epidote-calcite grain boundaries
 these are post-metamorphic sulphides

**WORK PROGRAM
BIG SWAN, PORTER TWP.**

After several days of prospecting and sampling in Porter Twp., it was decided that 2 - 12 claim blocks should be staked and recorded and a work permit obtained from the Ministry of Natural Resources for stripping purposes. A track excavator was rented from a local contractor and transported by float to the old Agnew Lake Mine site. The machine was unloaded and driven West to the Big Swan showing by following the Ontario Hydro power line corridor for about 8 km..

To locate the boundaries of the areas to be stripped, an MF-1 fluxgate magnetometer was used. The excavator was then used to remove the overburden from the outlined areas. A total of 6 days was required to complete the stripping of Big Swan, the West extension and Big Swan II, 1460 metres to the East. Several more days were required to finish washing the outcrops with high pressure water pumps. An Atlas - Copco gas plugger was used to drill 2 foot blast holes for trenching the Big Swan mineralized zones. The trenches were mostly blasted at right angles to what is believed to be the strike of the mineralization.

All of the samples taken on the project were grab samples. The purpose of blasting trenches on Big Swan was to expose fresh mineralization. All sample locations from the trenches were painted orange and marked with the sample numbers. A detailed sketch is attached of the trench and sample locations and numbers.

ASSAY RESULTS AND SAMPLE DESCRIPTIONS
PORTER TWP.

SAMPLE #	GOLD ppb	COPPER ppm	NICKEL ppm	ZINC ppm	DESCRIPTION
195789	59	5400	46	36	qtz/epidote 25% po 10% cpy
195790	37	9700	44	68	qtz/epidote 20% po 20% cpy
195791	131	1400	110	130	qtz/epidote 30% po 5% cpy
195792	168	9700	47	56	qtz/epidote 15% po 20% cpy
195793	39	3000	37	21	qtz/epidote 10% po 10% cpy
195794	30	1500	36	21	qtz/epidote 5% po 10% cpy
195795	15	2800	24	18	qtz/epidote 5% po 10% cpy
195876	7010	----	--	--	altered gabbro massive arsenopyrite
195877	4624	----	--	--	altered gabbro massive arsenopyrite
195878	297	750	470	--	altered gabbro, minor po and cpy, blue qtz
13913	27	----	--	--	med grnd gabbro, blue qtz, minor po/cpy
13914	5	940	89	38	qtz/epidote 25% po 5% cpy
13915	<5	750	86	35	qtz/epidote 25% po 5% cpy
13916	<5	----	--	--	mafic hornfels minor pyrite and po
13917	<5	----	--	--	fine grnd subwacke minor py, cpy, po
13918	51	----	--	--	fine grnd subwacke approx 1% cpy, py
13920	6	560	86	140	altered gabbro, 3% arspy/po
13921	32	630	100	170	altered gabbro with 5% arspy, cpy, po
13922	168	2800	410	3	carbonate/massive py
13923	1752	290	240	52	qtz/biotite schist 5% cpy, arspy
13924	1131	160	130	69	altered gabbro 5% cpy, arspy, po
13925	2419	570	180	37	altered gabbro, 3% po minor cpy, arspy

ASSAY RESULTS AND SAMPLE DESCRIPTIONS cont'd.
PORTER TWP.

Sample #	GOLD ppb	COPPER ppm	NICKEL ppm	ZINC ppm	DESCRIPTION
13926	234	410	30	13	chl qtz/epidote massive pyrite
13927	1673	7400	19	17	qtz/epidote 5% py,cpy
13928	9120	100	13	3	qtz/epidote 5% cpy,po
13929	40	5100	17	34	qtz/epidote 15% cpy,minor py
13930	26	290	26	16	carbonate,minor pyrite,cpy
13931	10	1500	120	<1	chl qtz/epidote massive coarse py
13932	<5	1200	130	<1	chl qtz/epidote coarse pyrite
13933	<5	930	170	11	chl qtz/epidote very coarse py
13934	6	370	84	<1	chl qtz/epidote 3% po stringers
13935	22	1100	97	<1	chl qtz/epidote 50% py,po
13936	65	13680	42	26	chl qtz/epidote py,po,10% cpy
13937	<5	630	50	<1	chl qtz/epidote 75% phyrrotite
13938	<5	570	68	<1	chl qtz/epidote 75% phyrrotite

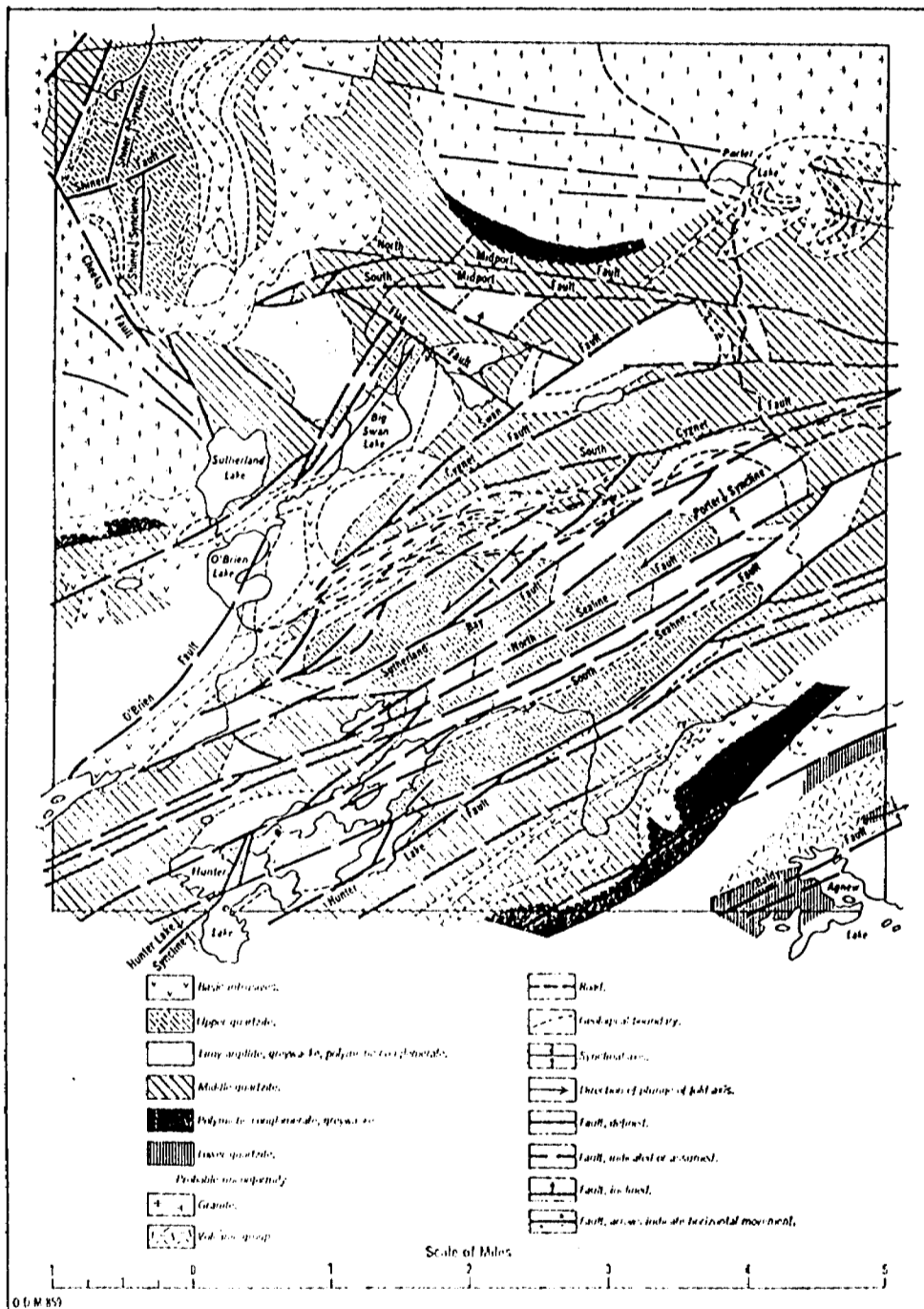
Legend:

po	Phyrrotite	cpy	Chalcopyrite
py	Pyrite	arspy	Arsenopyrite
qtz	Quartz	chl	Chloritized
crs	coarse	grnd	grained

ASSAY RESULTS AND SAMPLE DESCRIPTIONS cont.
PORTER TWP.

Sample #	Gold ppb	Gold oz/ton	Description
13939	175	0.005	qtz/epidote,carbonate in fractures.3% sulphides
13940	1525	0.044	80%pyr, 20%cp qtz/epidote,ghost banding
13941	597	0.017	40% sulphide 85%pyr,15%cp minor carbonate and qtz
13942	1228	0.036	qtz/epidote,semi-massive sulphides60%,85pyr,15cp minor py and carbonate
13943	1349	0.039	qtz/epidote,ghost banding carbonate in fractures x cutting fractures with py,pyr. 70% sulphides 90% py,10%cp
13944	665	0.019	qtz/epidote,ghost banding 30% sulphides 85%pyr,15%cp minor py
13945	839	0.024	qtz/epidote,disseminated sulphides 1% 90% pyr, 10% cp
13946	1293	0.038	qtz/epidote,epidote bands disseminated sulphides 1% 90%pyr,10%cp minor arspy
13947	2059	0.060	qtz/epidote,disseminated sulphides 1% 90%pyr,10%cp & arspy
13948	3812	0.114	qtz/epidote,<1% sulphide 40%pyr,40%arspy,10%py highly chloritized
13949	2228	0.065	qtz/epidote 1% sulphides 90%pyr,10%py,minor arspy
13950	3337	0.097	qtz/epidote,ghost banding 3-5% sulphides,carbonate 90%pyr,5%py,5%arspy
13951	17	0.001	qtz/epidote,carbonate highly chloritized 1% sulphide, 99%py minor pyr & arspy
13952	315	0.009	banded carbonate,contact zone,no visible sulphide qtz/epidote,chloritized 10% sulphides 90% pyr 10% cp, minor arspy

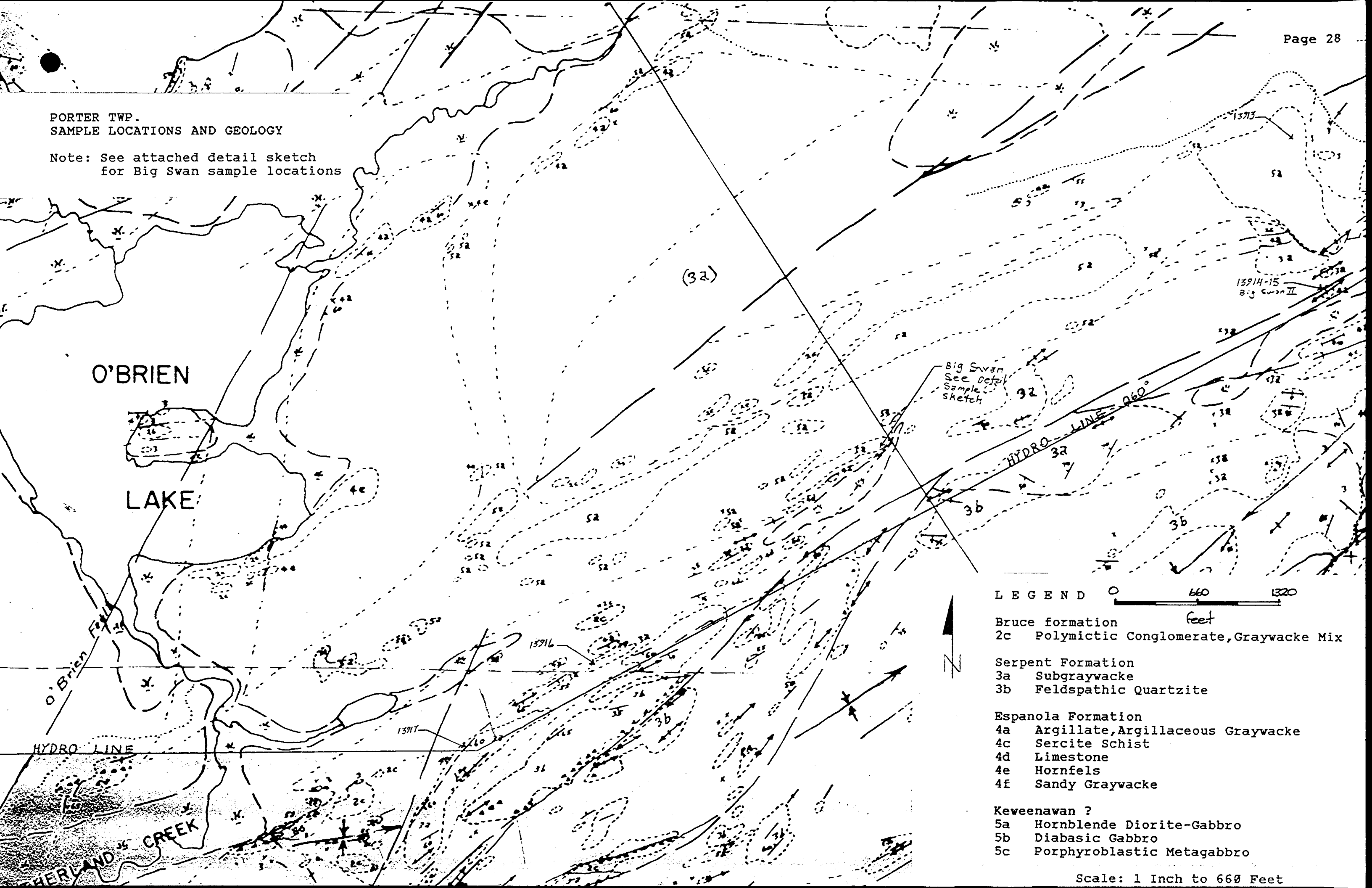
TRAVERSE LOCATIONS
PORTER TWP.



Sketch map showing the interpreted geology of Porter township.

PORTER TWP.
SAMPLE LOCATIONS AND GEOLOGY

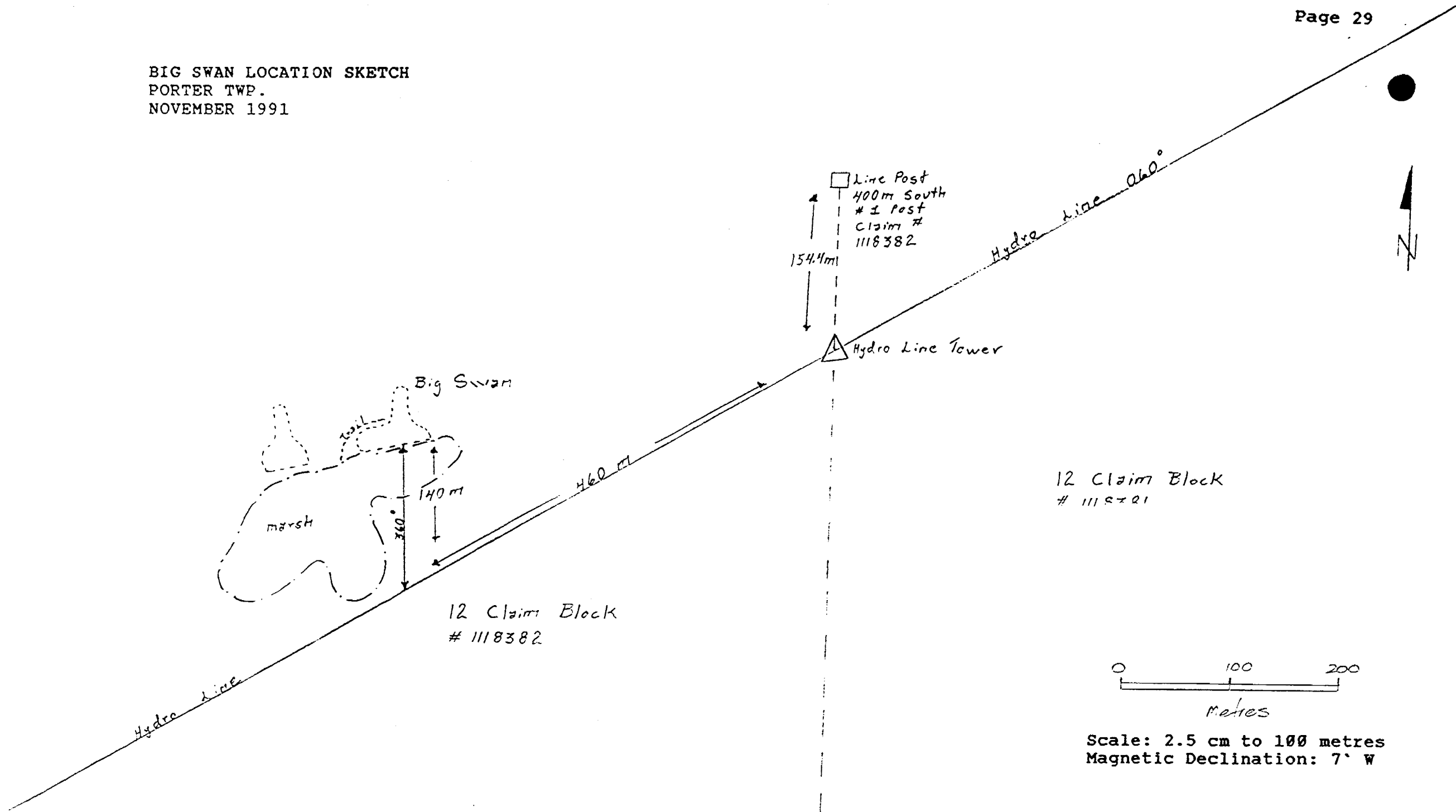
Note: See attached detail sketch
for Big Swan sample locations



- LEGEND
- 0 660 1320
Feet
- Bruce formation
 - 2c Polymictic Conglomerate, Graywacke Mix
 - Serpent Formation
 - 3a Subgraywacke
 - 3b Feldspathic Quartzite
 - Espanola Formation
 - 4a Argillate, Argillaceous Graywacke
 - 4c Sercite Schist
 - 4d Limestone
 - 4e Hornfels
 - 4f Sandy Graywacke
 - Keweenawan ?
 - 5a Hornblende Diorite-Gabbro
 - 5b Diabasic Gabbro
 - 5c Porphyroblastic Metagabbro

Scale: 1 Inch to 660 Feet

BIG SWAN LOCATION SKETCH
PORTER TWP.
NOVEMBER 1991



Line Post
400m South
1 Post
Claim #
1118382

154.4m

Hydro Line Tower

460 m

Big Swan

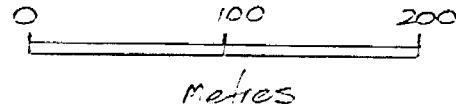
140 m

095

marsh

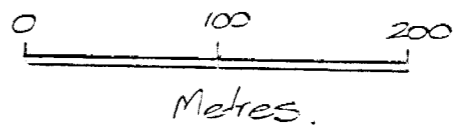
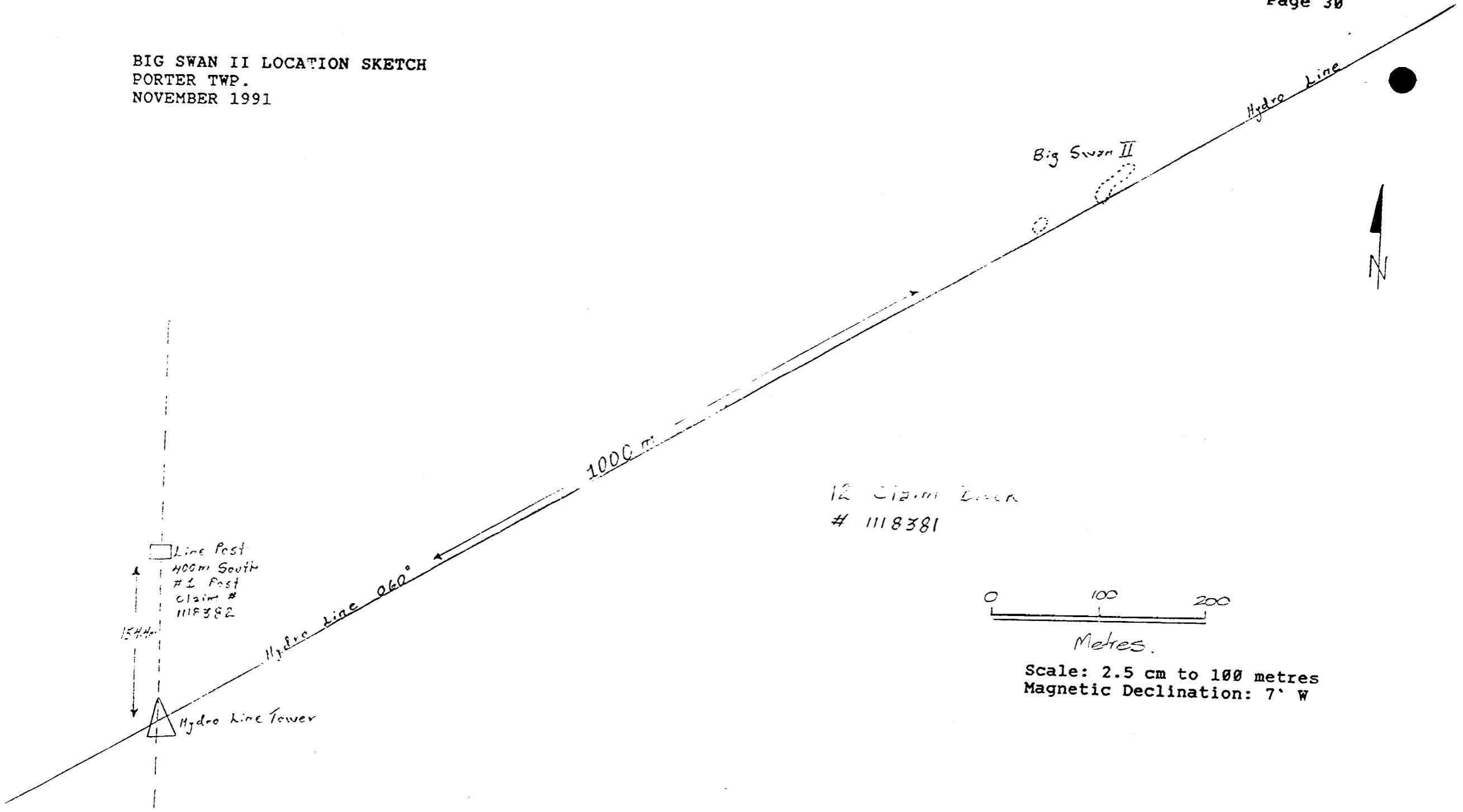
12 Claim Block
1118382

12 Claim Block
1118381



Scale: 2.5 cm to 100 metres
Magnetic Declination: 7° W

BIG SWAN II LOCATION SKETCH
PORTER TWP.
NOVEMBER 1991

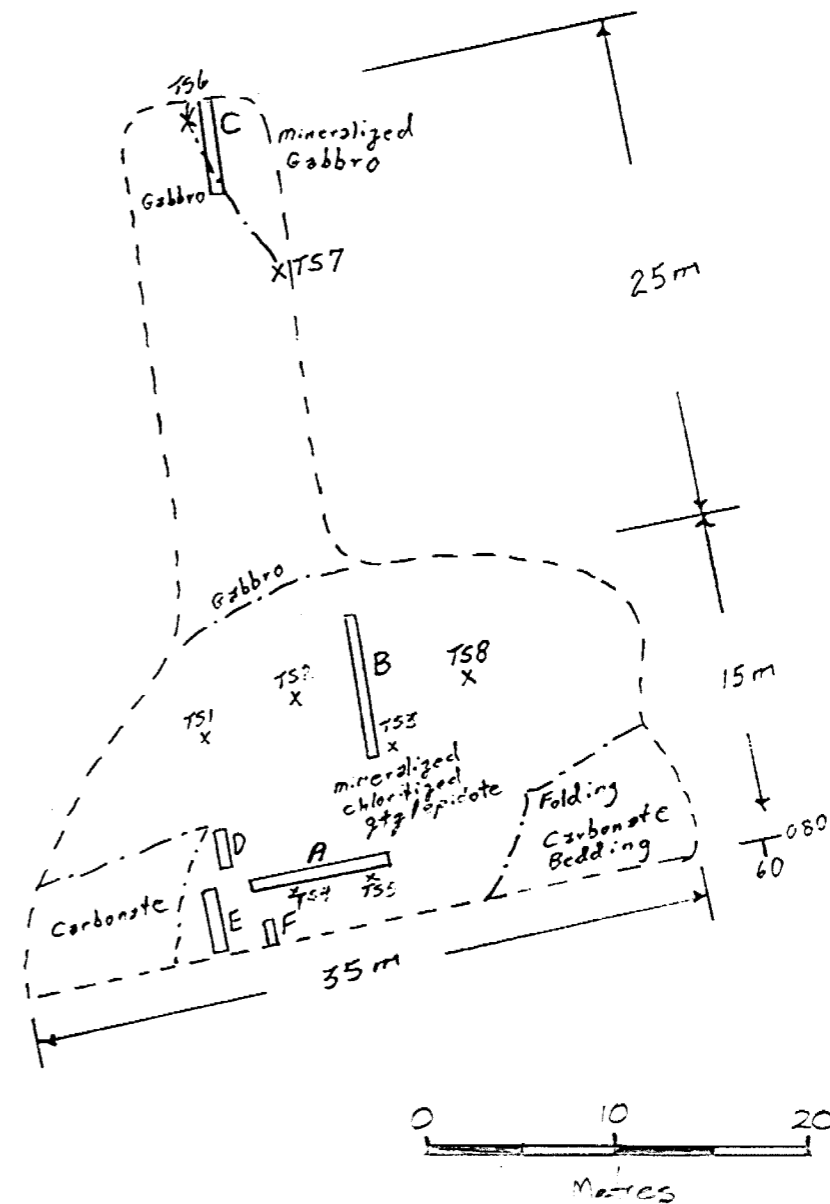
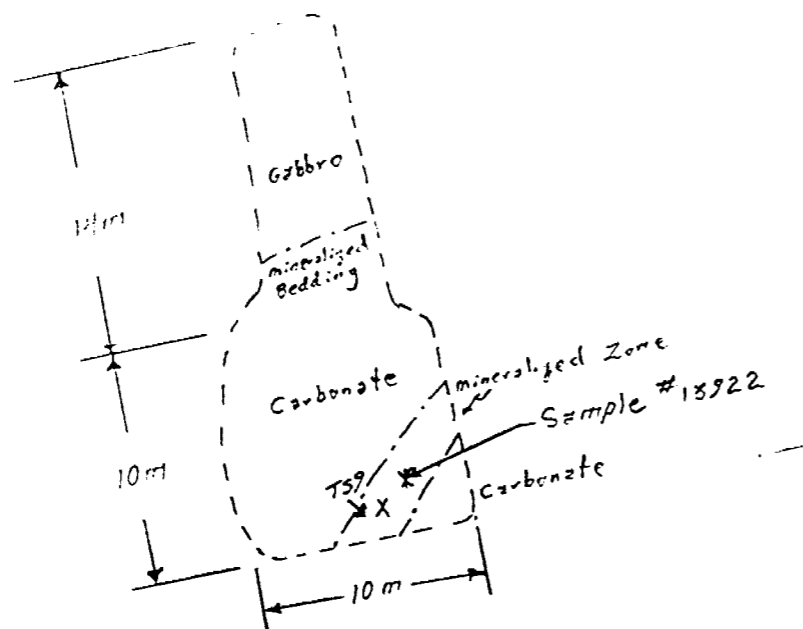


Scale: 2.5 cm to 100 metres
Magnetic Declination: 7° W

BIG SWAN STRIPPING AND TRENCHING SKETCH
 PORTER TWP.
 NOVEMBER 1991

Note: Letters indicate sample trench locations, see attached detail sketch.

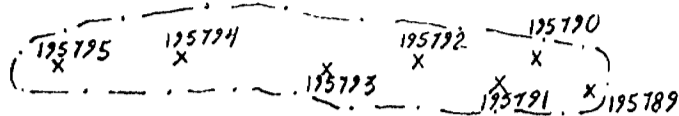
Numbers with the prefix TS indicate thin section sample locations .



Scale: 2.5 cm to 10 metres
 Magnetic Declination: 7° W

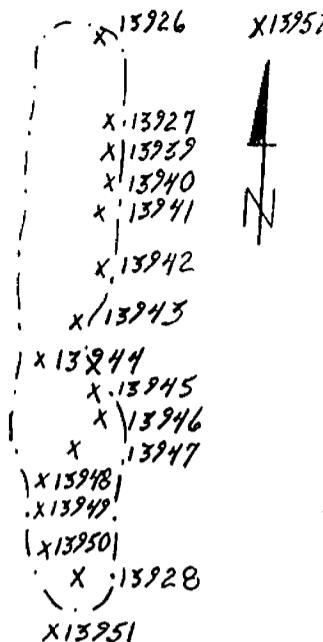
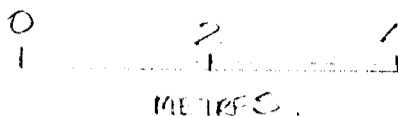
A TRENCH
BIG SWAN, PORTER TWP.
GRAB SAMPLES, NOV.91

Scale: 2.5cm to 2 m



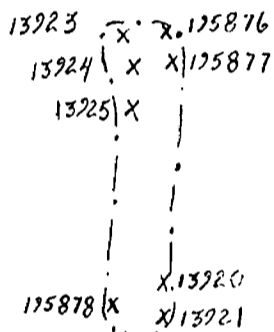
B TRENCH
BIG SWAN, PORTER TWP.
GRAB SAMPLES, NOV.91

Scale: 2.5cm to 2 m



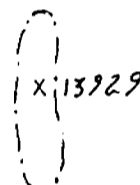
C TRENCH
BIG SWAN, PORTER TWP.
GRAB SAMPLES, NOV.91

Scale: 2.5 cm to 2 m



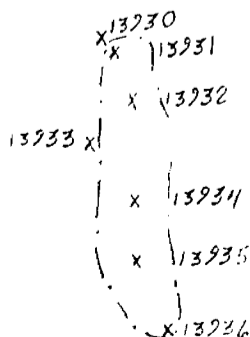
D TRENCH
BIG SWAN, PORTER TWP.
GRAB SAMPLES, NOV.91

Scale: 2.5cm to 2 m



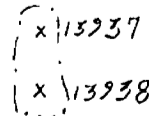
E TRENCH
BIG SWAN, PORTER TWP.
GRAB SAMPLES, NOV.91

Scale: 2.5cm to 2 m



F TRENCH
BIG SWAN, PORTER TWP.
GRAB SAMPLES, NOV.91

Scale: 2.5 cm to 2 m





ACCURASSAY LABORATORIES
 A DIVISION OF BARRINGER LABORATORIES LIMITED, REXDALE, ONTARIO
 BOX 426
 KIRKLAND LAKE, ONTARIO, CANADA P2N 3J1
 TEL.: (705) 567-3361

President: Dr. GEORGE DUNCAN, M.Sc., Ph. D., C. Chem (Ont.), C. Chem (U.K.), M.C.I.C., M.R.S.C., A.R.C.S.T.

41165

Certificate of Analysis

Page: 1

Mr. Mitchell Turcott
 Agnew Lake Lodge
 Box 70
 Webbwood, Ontario
 POP 2G0

September 11

91

Work Order # : 911113
 Project :

SAMPLE NUMBERS		Gold	Gold	
Accurassay	Customer	ppb	Oz/T	
248406	195789	59	0.002	
248407	195790	37	0.001	
248408	195791	131	0.004	
248409	195792	168	0.005	
248410	195793	39	0.001	
248411	195794	30	0.001	
248412	195795	15	<0.001	
248412	195795	13	<0.001	Check



LF-30

Per: _____

G. Duncan

ORIGINAL



ACCURASSAY LABORATORIES

A DIVISION OF BARRINGER LABORATORIES LIMITED, REXDALE, ONTARIO

BOX 426

KIRKLAND LAKE, ONTARIO, CANADA P2N 3J1

TEL.: (705) 567-3361

President: Dr. GEORGE DUNCAN, M.Sc., Ph. D., C. Chem (Ont.), C. Chem (U.K.), M.C.I.C., M.R.S.C., A.R.C.S.T.

41232

Certificate of Analysis

Page: 1

Mr. Mitchell Turcott
Agnew Lake Lodge
Box 70
Webbwood, Ontario
POP 2G0

September 20 91

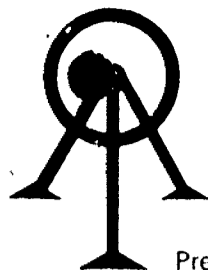
Work Order # : 911113
Project :

SAMPLE NUMBERS		Silver	Copper	Nickel	Lead	Zinc
Accurassay	Customer	ppm	ppm	ppm	ppm	ppm
248406	195789	1	5400	46	9	36
248407	195790	4	9700	44	12	68
248408	195791	2	1400	110	16	130
248409	195792	2	9700	47	13	56
248410	195793	2	3000	37	11	21
248411	195794	2	1500	36	9	21
248412	195795	1	2800	24	11	18



Per: *G. Duncan*

ORIGINAL



ACCURASSAY LABORATORIES
 A DIVISION OF BARRINGER LABORATORIES LIMITED, REXDALE, ONTARIO
 BOX 426
 KIRKLAND LAKE, ONTARIO, CANADA P2N 3J1
 TEL.: (705) 567-3361

President: Dr. GEORGE DUNCAN, M.Sc., Ph. D., C. Chem (Ont.), C. Chem (U.K.), M.C.I.C., M.R.S.C., A.R.C.S.T.

44123

Certificate of Analysis

Page: 1

Mr. Mitchell Turcott
 Agnew Lake Lodge
 Box 70
 Webbwood, Ontario
 POP 2G0

October 22

91

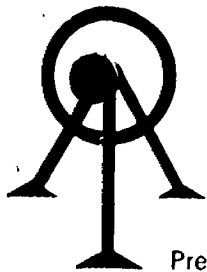
Work Order # : 911257
 Project :

SAMPLE NUMBERS		Gold	Gold
Accurassay	Customer	ppb	Oz/T
250809	195876	7010	0.204
250810	195877	4624	0.135
250810	195877	4683	0.136 Check



Per: _____

G. Duncan



ACCURASSAY LABORATORIES
A DIVISION OF BARRINGER LABORATORIES LIMITED, REXDALE, ONTARIO
BOX 426
KIRKLAND LAKE, ONTARIO, CANADA P2N 3J1
TEL.: (705) 567-3361

President: Dr. GEORGE DUNCAN, M.Sc., Ph. D., C. Chem (Ont.), C. Chem (U.K.), M.C.I.C., M.R.S.C., A.R.C.S.T.

44195

Certificate of Analysis

Page: 1

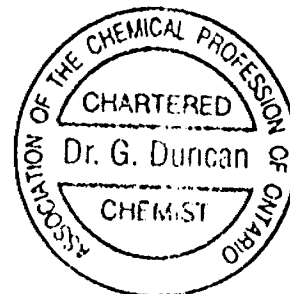
Mr. Mitchell Turcott
Agnew Lake Lodge
Box 70
Webbwood, Ontario
POP 2G0

October 25

91

Work Order # : 911257A
Project :

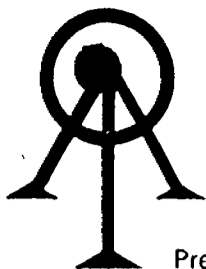
SAMPLE NUMBERS		Copper ppm	Nickel ppm
Accurassay	Customer		
250811	195878	750	470



LF-30

Per: *G. Duncan*

ORIGINAL



ACCURASSAY LABORATORIES

A DIVISION OF BARRINGER LABORATORIES LIMITED, REXDALE, ONTARIO

BOX 426

KIRKLAND LAKE, ONTARIO, CANADA P2N 3J1

TEL.: (705) 567-3361

President: Dr. GEORGE DUNCAN, M.Sc., Ph. D., C. Chem (Ont.), C. Chem (U.K.), M.C.I.C., M.R.S.C., A.R.C.S.T.

41223

Certificate of Analysis

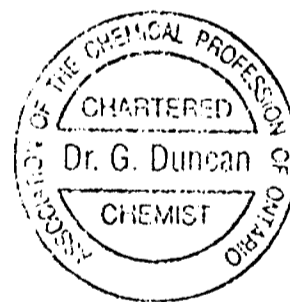
Page: 1

Mr. Mitchell Turcott
 Agnew Lake Lodge
 Box 70
 Webbwood, Ontario
 POP 2G0

September 19 91

Work Order # : 911123
 Project :

SAMPLE NUMBERS		Gold	Gold	Platinum	Palladium	
Accurassay	Customer	ppb	Oz/T	ppb	ppb	
248637	13913	27	0.001	34	58	
248637	13913	27	0.001	34	57	Check



LF-30

Per: _____

ORIGINAL



ACCURASSAY LABORATORIES
 A DIVISION OF BARRINGER LABORATORIES LIMITED, REXDALE, ONTARIO
 BOX 426
 KIRKLAND LAKE, ONTARIO, CANADA P2N 3J1
 TEL.: (705) 567-3361

President: Dr. GEORGE DUNCAN, M.Sc., Ph. D., C. Chem (Ont.), C. Chem (U.K.), M.C.I.C., M.R.S.C., A.R.C.S.T.

41.197

Certificate of Analysis

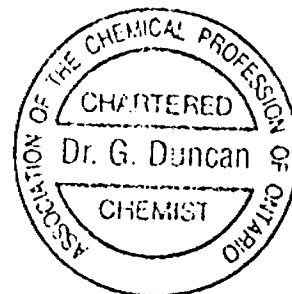
Page: 1

Mr. Mitchell Turcott
 Agnew Lake Lodge
 Box 70
 Webbwood, Ontario
 POP 2G0

September 17 91

Work Order # : 911124
 Project :

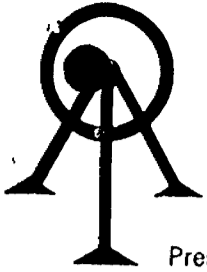
SAMPLE NUMBERS		Gold	Gold
Accurassay	Customer	ppb	Oz/T
248638	13914	5	<0.001
248639	13915	<5	<0.001
248640	13916	<5	<0.001
248641	13917	<5	<0.001
248642	13918	51	0.001
248642	13918	32	0.001 Check



LF-30

Per: *G. Duncan*

ORIGINAL



ACCURASSAY LABORATORIES
 A DIVISION OF BARRINGER LABORATORIES LIMITED, REXDALE, ONTARIO
 BOX 426
 KIRKLAND LAKE, ONTARIO, CANADA P2N 3J1
 TEL.: (705) 567-3361

President: Dr. GEORGE DUNCAN, M.Sc., Ph. D., C. Chem (Ont.), C. Chem (U.K.), M.C.I.C., M.R.S.C., A.R.C.S.T.

44124

Certificate of Analysis

Mr. Mitchell Turcott
 Agnew Lake Lodge
 Box 70
 Webbwood, Ontario
 POP 2G0

Page: 1

October 22

91

Work Order # : 911124
 Project :

SAMPLE NUMBERS		Silver	Copper	Nickel	Lead	Zinc
Accurassay	Customer	ppm	ppm	ppm	ppm	ppm
248638	13914	68	940	89	21	38
248639	13915	110	750	86	14	35

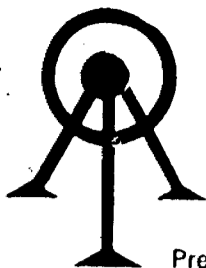


LF-30

Per: _____

G. Duncan

ORIGINAL



ACCURASSAY LABORATORIES
 A DIVISION OF BARRINGER LABORATORIES LIMITED, REXDALE, ONTARIO
 BOX 426
 KIRKLAND LAKE, ONTARIO, CANADA P2N 3J1
 TEL.: (705) 567-3361

President: Dr. GEORGE DUNCAN, M.Sc., Ph. D., C. Chem (Ont.), C. Chem (U.K.), M.C.I.C., M.R.S.C., A.R.C.S.T.

44590

Certificate of Analysis

Page: 1

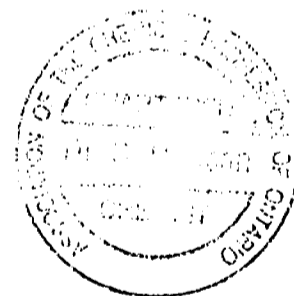
Mr. Mitchell Turcott
 Agnew Lake Lodge
 Box 70
 Webbwood, Ontario
 POP 2G0

December 3

91

Work Order # : 911403
 Project :

SAMPLE NUMBERS		Gold	Gold	
Accurassay	Customer	ppb	Oz/T	
252664	13920	6	<0.001	
252665	13921	32	0.001	
252666	13922	168	0.005	
252667	13923	1752	0.051	
252668	13924	1131	0.033	
252669	13925	2419	0.070	
252670	13926	234	0.007	
252671	13927	1673	0.049	
252672	13928	9120	0.265	
252673	13929	40	0.001	
252673	13929	18	0.001	Check
252674	13930	26	0.001	
252675	13931	10	<0.001	
252676	13932	<5	<0.001	
252677	13933	<5	<0.001	
252678	13934	6	<0.001	
252679	13935	22	0.001	
252680	13936	65	0.002	
252681	13937	<5	<0.001	
252682	13938	<5	<0.001	
252682	13938	<5	<0.001	Check



LF-30

Per: *G. Duncan*

ORIGINAL



ACCURASSAY LABORATORIES
 A DIVISION OF BARRINGER LABORATORIES LIMITED, REXDALE, ONTARIO
 BOX 426
 KIRKLAND LAKE, ONTARIO, CANADA P2N 3J1
 TEL.: (705) 567-3361

President: Dr. GEORGE DUNCAN, M.Sc., Ph. D., C. Chem (Ont.), C. Chem (U.K.), M.C.I.C., M.R.S.C., A.R.C.S.T.

44604

Certificate of Analysis

Page: 1

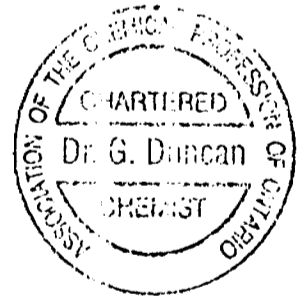
Mr. Mitchell Turcott
 Agnew Lake Lodge
 Box 70
 Webbwood, Ontario
 POP 2G0

December 4

91

Work Order # : 911403
 Project :

SAMPLE NUMBERS Accurassay	Customer	Copper ppm	Nickel ppm	Zinc ppm
252664	13920	560	86	140
252665	13921	630	100	170
252666	13922	2800	410	3
252667	13923	290	240	52
252668	13924	160	130	69
252669	13925	570	180	37
252670	13926	410	30	13
252671	13927	7400	19	17
252672	13928	100	13	3
252673	13929	5100	17	34
252674	13930	290	26	16
252675	13931	1500	120	<1
252676	13932	1200	130	<1
252677	13933	930	170	11
252678	13934	370	84	<1
252679	13935	1100	97	<1
252680	13936	1.368%	42	26
252681	13937	630	50	<1
252682	13938	570	68	<1



LF-30

Per: *G. Duncan*

ORIGINAL



ACCURASSAY LABORATORIES

A DIVISION OF BARRINGER LABORATORIES LIMITED, REXDALE, ONTARIO

BOX 426

KIRKLAND LAKE, ONTARIO, CANADA P2N 3J1

TEL.: (705) 567-3361

President: Dr. GEORGE DUNCAN, M.Sc., Ph. D., C. Chem (Ont.), C. Chem (U.K.), M.C.I.C., M.R.S.C., A.R.C.S.T.

44842

Certificate of Analysis

Page: 1

Turcott, Mr. Mitchell
P.O. Box 70
WEBBWOOD, Ontario
POP 2G0

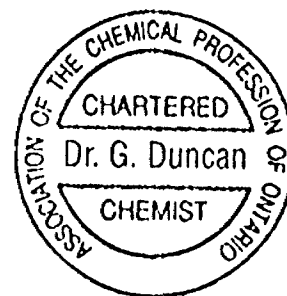
February 5

92

Work Order # : 920034

Project :

SAMPLE NUMBERS		Gold	Gold	
Accurassay	Customer	ppb	Oz/T	
253600	13939	175	0.005	
253601	13940	1525	0.044	
253602	13941	597	0.017	
253603	13942	1228	0.036	
253604	13943	1349	0.039	
253605	13944	665	0.019	
253606	13945	839	0.024	
253607	13946	1293	0.038	
253608	13947	2059	0.060	
253609	13948	3812	0.111	
253609	13948	3901	0.114	Check
253610	13949	2228	0.065	
253611	13950	3337	0.097	
253612	13951	17	<0.001	
253613	13952	301	0.009	
253613	13952	315	0.009	Check



Per: _____

G. Duncan

ORIGINAL

PROSPECTING DAILY LOG
PORTER TWP.

Date	Work Performed
September 6	drove to Nairn and took road to Agnew Lake Mine site and used quads to travel hydro corridor West to Porter Twp. prospected gabbro intrusion and took 7 samples #195789-195795.
September 11	flew to O'Brien lake and prospected East along power line and gabbro took 6 samples #13913-13918.
October 4	flew to O'Brien lake and prospected East used MF-1 magnetometer to locate possible areas to be stripped.

STRIPPING AND TRENCHING DAILY LOG
PORTER TWP.

October 8	drove to Nairn and took road to old mine site where we met float with excavator walked excavator to site for stripping.
October 9	breakdown caused delay, but began stripping and washing big swan showing, Dan drove to showing using vehicle and quad, Mitch flew to O'brien Lake and walked over to showing.
October 10	Dan drove to site with operator, Mitch flew to O'Brien Lake, used wajax pumps to wash face
October 11	Dan drove to site with operator, Mitch flew stripping and washing big swan.
October 12	Dan drove, Mitch flew, stripping and washing big swan for most of day. Excavator moved 50 metres West and began stripping more of big swan extension.
October 15	Dan drove, Mitch flew, moved excavator to the East to begin stripping big swan II, washing continues on big swan, drilling blast holes.
October 16	Dan drove, Mitch flew, finished with excavator washed big swan and took 3 samples #195876-78.

STRIPPING AND TRENCHING DAILY LOG cont'd
PORTER TWP.

Date	Work Performed
October 25	Mitch and Dave Peck flew to O'Brien lake and walked East to big swan showing. Took several samples for thin section and examined geology of mineralized zone.
November 21	Mitch and Dan drove to mine site and used quads to big swan showing. Used plugger to drill blast holes. Located showing from claim line and made sketches of stripped areas.
November 22	Mitch and Dan drove to mine site and used quads to big swan. Finished blast hole drilling and used explosives to blast trenches. Took 19 samples #13920-13938.

B TRENCH RESAMPLING LOG, JANUARY 1992
PORTER TWP.

January 29/92	Dan drove to Agnew Lake Lodge where we unloaded the snowmobiles. Used snow machines to travel to Big Swan. Used shovels to remove snow from B trench and then proceeded to take 14 samples from the uncovered area. Sample # 13939-13951 from B trench and 13952 3 metres East of top B trench. See detail sketch page 32. Used snowmobiles to return to Agnew Lodge. Assay results and descriptions page 26A.
---------------	--

Conclusions and Recommendations:

The Big Swan showing in Porter Twp. is a new discovery and has excellent potential. The gold and copper values obtained from grab samples indicate the presence of a potential ore body. The geology of the area provides for an extensive strike length of the mineralization along the gabbro contact.

A small exploration program involving the following recommendations would certainly provide a better understanding of the potential in this area:

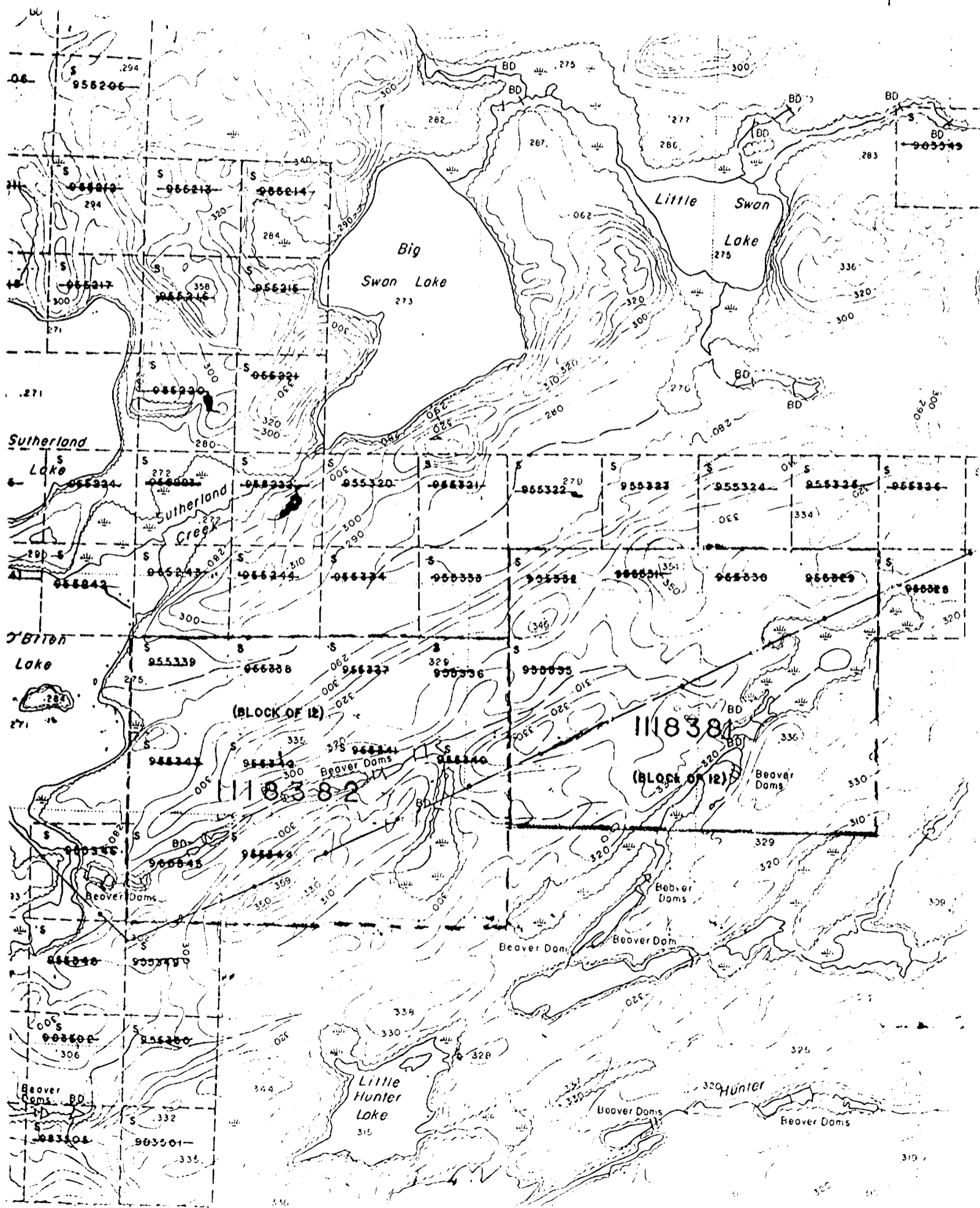
- 1) Establish an East-West base line.
- 2) Cut a grid with minimum 10m stations.
- 3) Conduct a detailed magnetometer and possibly ground loop EM survey.
- 4) Enhanced stripping of Big Swan to expose mineralized gabbro zone.
- 5) Detailed mapping of Big Swan outcrop.
- 6) Detailed channel sampling to locate and correlate gold values to the geology.

This project could probably be accomplished for about \$40,000 and could be used to base decisions on whether or not further work should be done on the property.

The Porter Twp. project, although limited by finances and manpower, has outlined a new gold property with good potential in an area of economic interest. This new gold discovery was the direct result of the finances made available through the Ontario Prospectors Assistance Program.

CLAIM LOCATION SKETCH
PORTER TWP., SUDBURY DISTRICT

Scale: 1 to 20,000



**Report of Work Conducted
Before Recording Claim**

Transaction Number
W9270.00013

Mining

Personal information collected on this form is obtained under the authority of this collection should be directed to the Provincial Manager, Mining Lands, Sudbury, Ontario, P3E 6A5, telephone (705) 670-7264.



41J08NE0001 2.14543 SHIBANANING

900

- Instructions:**
- Please type or print and submit in duplicate.
 - Refer to the Mining Act and Regulations for requirements of filing assessment work or consult the Mining Recorder.
 - A separate copy of this form must be completed for each Work Group.
 - Technical reports and maps must accompany this form in duplicate.
 - A sketch, showing the claims the work is assigned to, must accompany this form.

Recorded Holder(s) <i>Mitchell Turcott (Oarr Brune)</i>		Client No. <i>203573</i>
Address <i>Box 70, Webbwood POP-260</i>		Telephone No. <i>705-869-2239</i>
Mining Division <i>Sudbury</i>	Township/Area <i>Porter</i>	M or G Plan No.
Dates Work Performed From: <i>Sept. 6/91</i>		To: <i>Oct. 4/91</i>

Work Performed (Check One Work Group Only)

Work Group	Type
Regional Surveys	
Prospecting	<i>3 days prospecting, supplies, fuel, assays</i>

Total Assessment Work Claimed on the Attached Statement of Costs \$ *450.00*

Note: The Minister may reject for assessment work credit all or part of the assessment work submitted if the recorded holder cannot verify expenditures claimed in the statement of costs within 30 days of a request for verification.

Persons and Survey Company Who Performed the Work (Give Name and Address of Author of Report)

Name	Address
<i>Mitchell Turcott</i>	<i>Box 70, Webbwood, Ont. POP-260</i>
<i>Oarr Brune</i>	<i>Box 35, Whitefish Falls, Ont. POP-240</i>
RECEIVED	
APR 27 1992	

(attach a schedule if necessary)

MINING LANDS BRANCH

Certification of Beneficial Interest * See Note No. 1 on reverse side

I certify that at the time the work was performed, the claims covered in this work report were recorded in the current holder's name or held under a beneficial interest by the current recorded holder.	Date <i>March 23/92</i>	Recorded Holder or Agent (Signature) <i>Mitchell Turcott</i>
--	----------------------------	---

Certification of Work Report

I certify that I have a personal knowledge of the facts set forth in this work report, having performed the work or witnessed it during and/or after its completion, and the annexed report is true.		
Name and Address of Person Certifying <i>Mitchell Turcott</i>		
Telephone No. <i>705-869-2239</i>	Date <i>March 23/92</i>	Certified By (Signature) <i>Mitchell Turcott</i>

For Office Use Only

Total Value Cr. Recorded <i>\$450</i>	Date Recorded <i>MAR. 26/92</i>	Mining Recorder <i>[Signature]</i>	RECEIVED MAR 25 1992 A.M. P.M. 7 8 9 10 11 12 1 2 3 4 5 6 <i>1:38 PM</i>
	Deemed Approval Date <i>June 24</i>	Date Approved <i>[Signature]</i>	
	Date Notice for Amendments Sent		



Statement of Costs
for Assessment Credit

État des coûts aux fins
du crédit d'évaluation

Mining Act/Loi sur les mines

Transaction No./N° de transaction

W9270.00013

Personal information collected on this form is obtained under the authority of the Mining Act. This information will be used to maintain a record and ongoing status of the mining claim(s). Questions about this collection should be directed to the Provincial Manager, Minings Lands, Ministry of Northern Development and Mines, 4th Floor, 159 Cedar Street, Sudbury, Ontario P3E 6A5, telephone (705) 670-7264.

Les renseignements personnels contenus dans la présente formule sont recueillis en vertu de la Loi sur les mines et serviront à tenir à jour un registre des concessions minières. Adresser toute question sur la collecte de ces renseignements au chef provincial des terrains miniers, ministère du Développement du Nord et des Mines, 159, rue Cedar, 4^e étage, Sudbury (Ontario) P3E 6A5, téléphone (705) 670-7264.

1. Direct Costs/Coûts directs

Type	Description	Amount Montant	Totals Total global
Wages Salaires	Labour Main-d'oeuvre	450.00	
	Field Supervision Supervision sur le terrain		450.00
Contractor's and Consultant's Fees Droits de l'entrepreneur et de l'expert- conseil	Type		
Supplies Used Fournitures utilisées	Type		
Equipment Rental Location de matériel	Type		
Total Direct Costs Total des coûts directs			450.00

2. Indirect Costs/Coûts indirects

** Note: When claiming Rehabilitation work Indirect costs are not allowable as assessment work.
Pour le remboursement des travaux de réhabilitation, les coûts indirects ne sont pas admissibles en tant que travaux d'évaluation.

Type	Description	Amount Montant	Totals Total global
Transportation Transport	Type		
Food and Lodging Nourriture et hébergement			
Mobilization and Demobilization Mobilisation et démobilisation			
Sub Total of Indirect Costs Total partiel des coûts indirects			
Amount Allowable (not greater than 20% of Direct Costs) Montant admissible (n'excédant pas 20 % des coûts directs)			
Total Value of Assessment Credit (Total of Direct and Allowable indirect costs)		Valeur totale du crédit d'évaluation (Total des coûts directs et indirects admissibles)	450.00

Note: The recorded holder will be required to verify expenditures claimed in this statement of costs within 30 days of a request for verification. If verification is not made, the Minister may reject for assessment work all or part of the assessment work submitted.

Note : Le titulaire enregistré sera tenu de vérifier les dépenses demandées dans le présent état des coûts dans les 30 jours suivant une demande à cet effet. Si la vérification n'est pas effectuée, le ministre peut rejeter tout ou une partie des travaux d'évaluation présentés.

Filing Discounts

1. Work filed within two years of completion is claimed at 100% of the above Total Value of Assessment Credit.
2. Work filed three, four or five years after completion is claimed at 50% of the above Total Value of Assessment Credit. See calculations below:

Remises pour dépôt

1. Les travaux déposés dans les deux ans suivant leur achèvement sont remboursés à 100 % de la valeur totale susmentionnée du crédit d'évaluation.
2. Les travaux déposés trois, quatre ou cinq ans après leur achèvement sont remboursés à 50 % de la valeur totale du crédit d'évaluation susmentionné. Voir les calculs ci-dessous.

Total Value of Assessment Credit	Total Assessment Claimed
× 0.50 =	

Valeur totale du crédit d'évaluation	Évaluation totale demandée
× 0,50 =	

RECEIVED

APR 27 1992

Certification Verifying Statement of Costs

MINING LANDS DATA UNIT

Attestation de l'état des coûts

I hereby certify:
that the amounts shown are as accurate as possible and these costs were incurred while conducting assessment work on the lands shown on the accompanying Report of Work form.

J'atteste par la présente :
que les montants indiqués sont le plus exact possible et que ces dépenses ont été engagées pour effectuer les travaux d'évaluation sur les terrains indiqués dans la formule de rapport de travail ci-joint.

that as Recorded Holder I am authorized
(Recorded Holder, Agent, Position in Company)

Et qu'à titre de _____ je suis autorisé
(titulaire enregistré, représentant, poste occupé dans la compagnie)

to make this certification

à faire cette attestation.

Signature	Date
<i>M. J. J. J.</i>	April 9/92

Report of Work Conducted Before Recording Claim

Mining Act

Transaction Number
W9270.00014

Mining Lands

Personal information collected on this form is obtained under the authority of the Mining Act. This information will be used for correspondence. Questions about this collection should be directed to the Provincial Manager, Mining Lands, Ministry of Northern Development and Mines, Fourth Floor, 159 Cedar Street, Sudbury, Ontario, P3E 6A5, telephone (705) 670-7264.

2.145

- Instructions:**
- Please type or print and submit in duplicate.
 - Refer to the Mining Act and Regulations for requirements of filing assessment work or consult the Mining Recorder.
 - A separate copy of this form must be completed for each Work Group.
 - Technical reports and maps must accompany this form in duplicate.
 - A sketch, showing the claims the work is assigned to, must accompany this form.

Recorded Holder(s) <i>Mitchell Turcott</i>		Client No. <i>203573</i>
Address <i>Box 70, Webbwood POP-260</i>		Telephone No. <i>705-869-2239</i>
Mining Division <i>Sudbury</i>	Township/Area <i>shibanning</i>	M or G Plan No. <i>G2866</i>
Dates Work Performed From: <i>July 2/91</i>		To: <i>Oct. 1/91 mH</i>

Work Performed (Check One Work Group Only)

Work Group	Type
Regional Surveys	
Prospecting	<i>3 days prospecting, supplies, fuel, assays</i>

Total Assessment Work Claimed on the Attached Statement of Costs \$ *450.00*

Note: The Minister may reject for assessment work credit all or part of the assessment work submitted if the recorded holder cannot verify expenditures claimed in the statement of costs within 30 days of a request for verification.

Persons and Survey Company Who Performed the Work (Give Name and Address of Author of Report)

Name	Address
<i>Mitchell Turcott</i>	<i>Box 70, Webbwood, Ont. POP-260</i>
<i>Dan Bruane</i>	<i>Whitelish Falls, Ont. POP-210</i>

RECEIVED
APR 27 1992
MINING LANDS BRANCH
APR 27 1992

(attach a schedule if necessary)

Certification of Beneficial Interest * See Note No. 1 on reverse side

I certify that at the time the work was performed, the claims covered in this work report were recorded in the current holder's name or held under a beneficial interest by the current recorded holder.	Date <i>March 23/92</i>	Recorded Holder or Agent (Signature) <i>Mitchell Turcott</i>
--	----------------------------	---

Certification of Work Report

I certify that I have a personal knowledge of the facts set forth in this work report, having performed the work or witnessed it during and/or after its completion, and the annexed report is true.

Name and Address of Person Certifying
Mitchell Turcott

Telephone No. <i>705-869-2239</i>	Date <i>March 23/92</i>	Certified By (Signature) <i>Mitchell Turcott</i>
--------------------------------------	----------------------------	---

For Office Use Only

Total Value Cr. Recorded <i>\$ 450</i>	Date Recorded <i>MAR. 26/92</i>	Mining Recorder <i>[Signature]</i>	<table border="1"> <tr> <td colspan="2">SUDBURY MINING DIV.</td> </tr> <tr> <td colspan="2">RECEIVED</td> </tr> <tr> <td colspan="2">MAR 26 1992</td> </tr> <tr> <td>A.M.</td> <td>P.M.</td> </tr> <tr> <td>7</td> <td>8</td> </tr> <tr> <td>9</td> <td>10</td> </tr> <tr> <td>11</td> <td>12</td> </tr> <tr> <td>1</td> <td>2</td> </tr> <tr> <td>3</td> <td>4</td> </tr> <tr> <td>5</td> <td>6</td> </tr> </table>	SUDBURY MINING DIV.		RECEIVED		MAR 26 1992		A.M.	P.M.	7	8	9	10	11	12	1	2	3	4	5	6
	SUDBURY MINING DIV.																						
	RECEIVED																						
MAR 26 1992																							
A.M.	P.M.																						
7	8																						
9	10																						
11	12																						
1	2																						
3	4																						
5	6																						
Deemed Approval Date <i>June 24.</i>	Date Approved <i>[Signature]</i> Mining Recorder																						
Date Notice for Amendments Sent																							

Claim Number	Number of Claim Units
1118378	1
	1

Total Number of Claims

Value of Work Done on Land Subsequently Staked as this Claim
450.00
450.00

Total Value Work Done on Subsequently Staked Land

Value Applied to this Claim		
From Work Done on Land Subsequently Staked as this Claim	From the Allowable 25% of the Survey Costs from Adjacent Crown Land	Total Applied to this Claim
		450.00
		450.00

Total Applied

Value Assigned from this Claim	Reserve: Work to be Claimed at Future Date

Total Assigned

Total Reserve

Credits you are claiming in this report may be cut back. In order to minimize the adverse effects of such deletions, please indicate from which claims you wish to prioritize the deletion of credits. Please mark (✓) one of the following:

- 1. Credits are to be cut back starting with the claim listed last, working backwards.
- 2. Credits are to be cut back equally over all claims contained in this report of work.
- 3. Credits are to be cut back as prioritized on the attached appendix.

RECEIVED

APR 27 1992

In the event that you have not specified your choice of priority, option one will be implemented. **MINING LANDS BRANCH**

Note 1: Examples of beneficial interest are unrecorded transfers, option agreements, memorandum of agreements, etc., with respect to the mining claims.



Statement of Costs
for Assessment Credit

État des coûts aux fins
du crédit d'évaluation

Transaction No./N° de transaction

W9270.00014

Mining Act/Loi sur les mines

Personal information collected on this form is obtained under the authority of the Mining Act. This information will be used to maintain a record and ongoing status of the mining claim(s). Questions about this collection should be directed to the Provincial Manager, Minings Lands, Ministry of Northern Development and Mines, 4th Floor, 159 Cedar Street, Sudbury, Ontario P3E 6A5, telephone (705) 670-7264.

Les renseignements personnels contenus dans la présente formule sont recueillis en vertu de la Loi sur les mines et serviront à tenir à jour un registre des concessions minières. Adresser toute question sur la collecte de ces renseignements au chef provincial des terrains miniers, ministère du Développement du Nord et des Mines, 159, rue Cedar, 4^e étage, Sudbury (Ontario) P3E 6A5, téléphone (705) 670-7264.

1. Direct Costs/Coûts directs

Type	Description	Amount Montant	Totals Total global
Wages Salaires	Labour Main-d'oeuvre	450.00	
	Field Supervision Supervision sur le terrain		450.00
Contractor's and Consultant's Fees Droits de l'entrepreneur et de l'expert- conseil	Type		
Supplies Used Fournitures utilisées	Type		
Equipment Rental Location de matériel	Type		
Total Direct Costs Total des coûts directs			450.00

2. Indirect Costs/Coûts indirects

** Note: When claiming Rehabilitation work indirect costs are not allowable as assessment work.
Pour le remboursement des travaux de réhabilitation, les coûts indirects ne sont pas admissibles en tant que travaux d'évaluation.

Type	Description	Amount Montant	Totals Total global
Transportation Transport	Type		
Food and Lodging Nourriture et hébergement			
Mobilization and Demobilization Mobilisation et démobilisation			
Sub Total of Indirect Costs Total partiel des coûts indirects			
Amount Allowable (not greater than 20% of Direct Costs) Montant admissible (n'excédant pas 20 % des coûts directs)			
Total Value of Assessment Credit (Total of Direct and Allowable Indirect costs)		Valeur totale du crédit d'évaluation (Total des coûts directs et indirects admissibles)	450.00

Note: The recorded holder will be required to verify expenditures claimed in this statement of costs within 30 days of a request for verification. If verification is not made, the Minister may reject for assessment work all or part of the assessment work submitted.

Note : Le titulaire enregistré sera tenu de vérifier les dépenses demandées dans le présent état des coûts dans les 30 jours suivant une demande à cet effet. Si la vérification n'est pas effectuée, le ministre peut rejeter tout ou une partie des travaux d'évaluation présentés.

Filing Discounts

1. Work filed within two years of completion is claimed at 100% of the above Total Value of Assessment Credit.
2. Work filed three, four or five years after completion is claimed at 50% of the above Total Value of Assessment Credit. See calculations below:

Remises pour dépôt

1. Les travaux déposés dans les deux ans suivant leur achèvement sont remboursés à 100 % de la valeur totale susmentionnée du crédit d'évaluation.
2. Les travaux déposés trois, quatre ou cinq ans après leur achèvement sont remboursés à 50 % de la valeur totale du crédit d'évaluation susmentionné. Voir les calculs ci-dessous.

Total Value of Assessment Credit	Total Assessment Claimed
× 0.50 =	

Valeur totale du crédit d'évaluation	Evaluation totale demandée
× 0,50 =	

RECEIVED

APR 27 1992

Certification Verifying Statement of Costs

MINING LANDS BRANCH

Attestation de l'état des coûts

I hereby certify:
that the amounts shown are as accurate as possible and these costs were incurred while conducting assessment work on the lands shown on the accompanying Report of Work form.

J'atteste par la présente :
que les montants indiqués sont le plus exact possible et que ces dépenses ont été engagées pour effectuer les travaux d'évaluation sur les terrains indiqués dans la formule de rapport de travail ci-joint.

that as Recorded Holder I am authorized
(Recorded Holder, Agent, Position in Company)

Et qu'à titre de _____ je suis autorisé
(titulaire enregistré, représentant, poste occupé dans la compagnie)

to make this certification

à faire cette attestation.

Signature	Date
<i>M. J. ...</i>	March 9/92

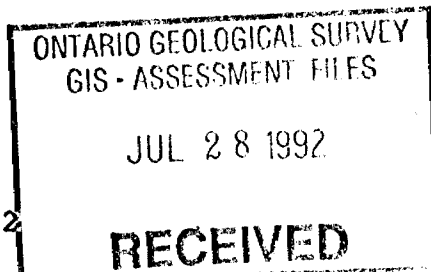


Ontario

Ministry of
Northern Development
and Mines

Ministère du
Développement du Nord
et des Mines

Geoscience Approvals Section
Mining Lands Branch
159 Cedar Street, 4th Floor
Sudbury, Ontario
P3E 6A5



Telephone: (705) 670-7264
Fax: (705) 670-7262

Our File: 2.14543
Transaction #: W9270.00013
W9270.00014

June 22, 1992

Mining Recorder
Ministry of Northern Development
and Mines
159 Cedar Street, 2nd Floor
Sudbury, Ontario
P3E 6A5

Dear Sir:

RE: Approval of Assessment Work on mining claims S 1118382 et al. in
Porter and Shibananing Township.

The Assessment Credits for Prospecting, section 8 of the Mining Act
Regulations, as listed on the original Reports of Work, have been
approved as of JUNE 22, 1992.

Please indicate this approval on the claim record sheets.

If you have any questions please call Clive Stephenson at
(705) 670-7251.

Yours sincerely,

Ron C. Gashinski
Senior Manager, Mining Lands Branch
Mines and Minerals Division
CDI
CDS/jl
Enclosures

cc: Assessment Files Office
Toronto, Ontario

Resident Geologist
Sudbury, Ontario

Canadian Application Success
 PO Box 35
 Whitfish Falls Ont.

SOLD TO: Mitch Turcotte
 Webwood Ont

SHIP TO

ADDRESS

VIA

RE: Your Bigdwan Project
 Porter Twp. Sudbury Mining
 District
 Rental One Cobra Gas Plugger
 5 days x \$70.00 ea
 12 Drill Bits \$6.00 ea
 One Mack III HP Wayjack
 Wash Pump 7 days \$60.00
 700 ft. of Fire Hose @ \$300/100 ft.
 7 days x \$35.00
 One 4x4 Honda 350 ATV
 10 days x \$45.00

INVOICE

OUR NUMBER 099721
 DATE Nov 29/91
 CUSTOMER'S ORDER
 SALESMAN D Brunne
 TERMS PAID
 F.O.B.

# 350 0 0	
720 0 0	
420 0 0	
245 0 0	
450 0 0	
1535 0 0	TOTAL



CARLYLE CONSTRUCTION LTD.

GST #R112140496

Box 1213

ESPANOLA, ONTARIO POP 1C0

Phone 869-1400

#12

Dan Brunne - Mitch Turcotte

CUSTOMER ORDER NO.		PHONE	DATE
		869-2239	OCT 16/91
NAME			
ADDRESS			
SOLD BY			
CASH			
C.O.D.			
CHARGE			
ON ACCT.			
MOSE. RET'D.			
PAID OUT			
QTY.	DESCRIPTION	PRICE	AMOUNT
2.0 hrs	MON, OCT 7 - FLOAT RENTAL	75.00	150.00
1.0 hr	" " - EXCAVATOR RENTAL	85.00	85.00
2.0 hr	TUE, OCT 8 - EXCAVATOR RENTAL	85.00	170.00
6.0 hr	WED, OCT 9 - EXCAVATOR (10:30-4:30)	85.00	510.00
8.0 hr	THU, OCT 10 - EXCAVATOR	85.00	680.00
1.5 hr	FRI, OCT 11 - EXCAVATOR	85.00	127.50
9.0 hr	SAT, OCT 12 - EXCAVATOR RENTAL	85.00	765.00
8.5 hr	TUE, OCT 15 - EXCAVATOR (9:10-3:30)	85.00	722.50
2.0 hr	FLOAT RENTAL - RETURN	75.00	150.00
	OPERATOR HOURS TRAVELLING + ATV RENTAL		n/c.
3.5 hr	travelling -	85.00	297.50
			3657.50
SPECIAL INSTRUCTIONS:		GST	256.03
		SUB-TOTAL	
		PST	
RECEIVED BY		TOTAL	3913.53

PAID by chg #012 Oct 16/91

110 0400

Thank You

BOYES EXPLOSIVES LIMITED

INVOICE - BILL OF LADING / FACTURE - CONNAISSEMENT

8662

EXPLOSIFS BOYES EXPLOSIVES

TRIBUTORS:
I - L EXPLOSIVES & SUPPLIES
ART DRILL SUPPLIES

1350 MAPLE ST., FENWICK, ONTARIO L0S 1C0 416-892-5725 FAX: 416-892-8185
P.O. BOX 219, GREELY, ONTARIO K0A 1Z0 613-821-3222
1151 LORNE ST., SUDBURY, ONTARIO P3C 4T1 705-674-1913

OTHER LOCATIONS TO SERVE YOU
BANCROFT LANARK
ELLIOT LAKE MADOC
KINGSTON NORTH BAY
PARRY SOUND

SHIPPED FROM:
POINT D'EXPEDITION: **Coniston**
SHIPPER'S MAG. LICENSE EXPEDITEUR LIC. D'ENTREPOT: **F 300**
VEHICLE NO. NO. CAMION:

LD
DU
Dan Brunne
Whitefish Falls
Ont.

SHIP TO
EXPÉDIER À

Falconbridge Twp

DATE ORDERED / DATE COMMANDE	DATE REQ'D / DATE REQUISE	TIME REQ'D / HEURE REQUISE	CUST. REF. NO. / NO. DE REF DU CLIENT	CUST. MAG. LIC. NO. / NO. DE MAG. DU CLIENT	SHIP VIA / EXPÉDIER VIA	DATE SHIPPED / DATE D'EXPÉDITION	FED. SALES TAX / TAXE DE VENTE FED.	PROV. SALES TAX / TAXE DE VENTE PROV.
2/1/91		2:30		R-143540	take			

DESCRIPTION	CLASS	GROUP / GROUPE	U.N. CODE	P.G.	# OF PKGS.	DESCRIPTION	QTY. SHIPPED / QTÉ. LIVRÉ	UNIT PRICE / PRIX UNITAIRE	UNIT / UNITE	AMOUNT / MONTANT
Explosive blasting type A	L1	D	0081	II	1	Forceite 75% 25x200	1	\$146.90		\$146.90
CORD Detonating	L1	D	0065	II	2	Roll B-Line x 150m	2	79.60		159.20
Detonators Assemblies	L1	B	0360	II	10	Safety Fuse 2m	10	22.00		220.00
										328.10
								PST		26.25
								GST		22.97
										\$377.32

Redeaus #6

SUMMARY OF EMERGENCY RESPONSE PLAN / RESUME DE PLAN D'URGENCE	PLACARDS OFFERED / OFFRE DE PANCARTES	CLASS:	SHIPPING CHG. / TRANS.	SUB-TOTAL / SOUS-TOTAL	PROV. SALES TAX / TAXE DE VENTE PROV.	TOTAL INVOICE / FACTURE TOTAL
	<input type="checkbox"/> YES/OUI <input type="checkbox"/> NO/NO	QUANTITY / QUANTITÉ				
EMERGENCY RESPONSE TELEPHONE NUMBERS / NUMEROS DE TELEPHONE EN CAS D'URGENCE	SHIPPER / EXPÉDITEUR	CARRIER / TRANSPORTEUR	CASH SALE	CHARGE SALE	TERMS/CONDITIONS	NET 30 DAYS/JOURS
	1-514-932-0194	BOYES EXPLOSIVES	<i>Edward Stinger</i>			

CUSTOMER'S COPY/COPIE DU CLIENT

MAP SYMBOLOLOGY

Aerial Corridor	Pipeline
Boundary	Railroad
Intermittent	Single Track
Intermittent	Double Track
Abandoned	Abandoned
Turnouts	Roads
Highway	Highway County
Highway	Traverse
Highway	Access (road of doubtful maintenance or right-of-way)
Highway	Trail, Bush Road (unimproved, etc.)
Highway	Rapids
Highway	Double line river with multiple rapids
Highway	Single line river with multiple rapids
Highway	River, Stream, Canal
Highway	Approximate seasonal
Highway	Direction of flow
Highway	Rock
Highway	Shoal
Highway	Spot Elevation (lake elevations)
Highway	Tower
Highway	Transmission Line
Highway	Power
Highway	Pyrene
Highway	Tunnel
Highway	Utility Pole
Highway	Wharf, Dock, Pier
Highway	Wooded Area

AREAS WITHDRAWN FROM DISPOSITION

M.R.O. - MINING RIGHTS ONLY				
S.R.O. - SURFACE RIGHTS ONLY				
M.R. - MINING AND SURFACE RIGHTS				
Description	Order No.	Date	Disposition	File

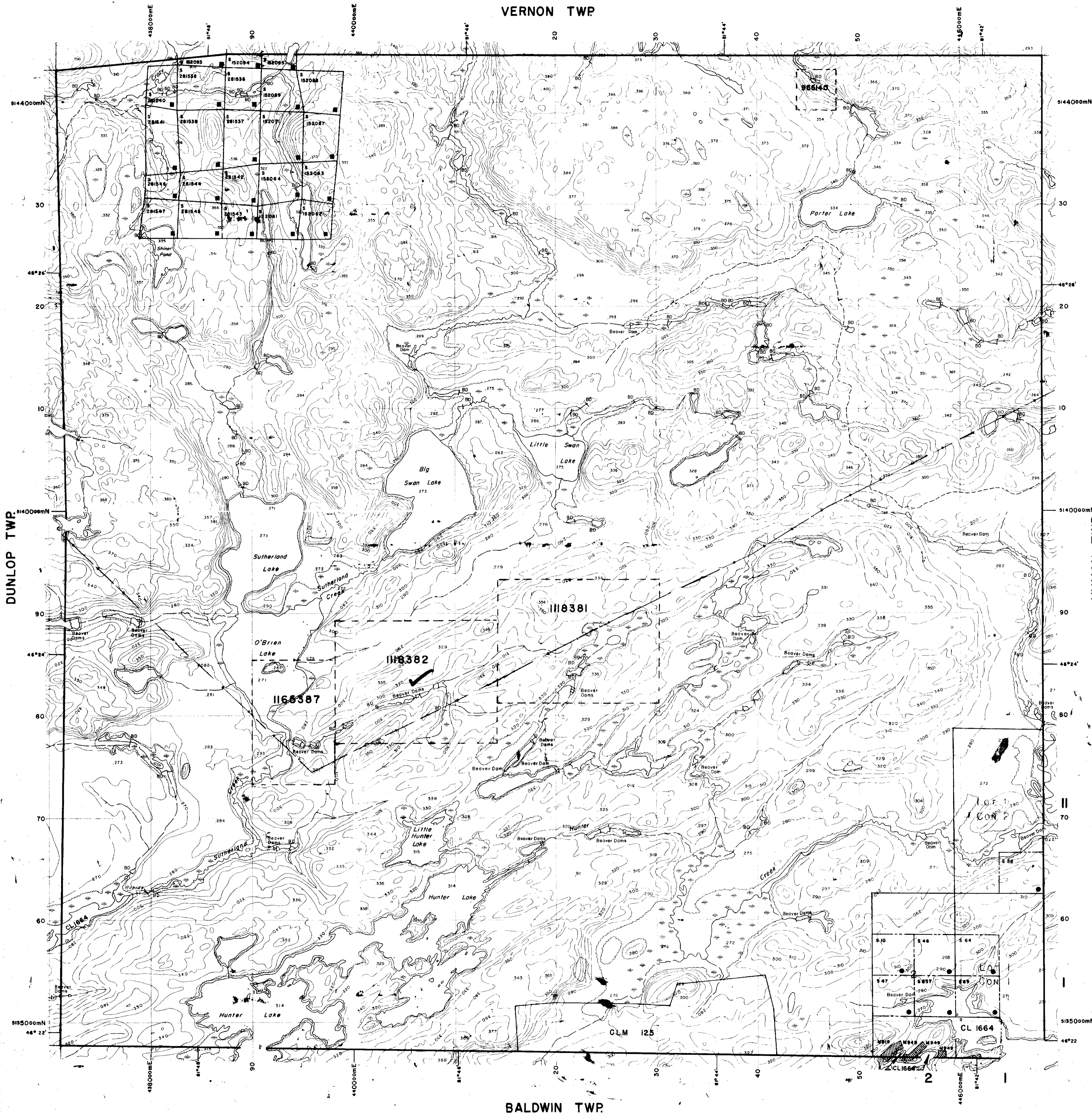
DATE OF ISSUE

A 22 3 1932
SUBURRY
MINING RECORDER'S OFFICE

DATE OF ISSUE

JUN 3 0 1988
SUBURRY
MINING RECORDER'S OFFICE

VERNON TWP



LEGEND

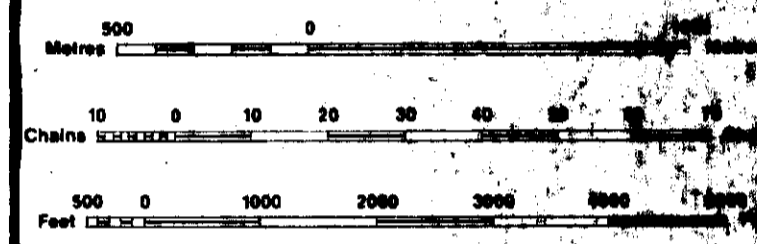
HIGHWAY AND ROUTE No.	
OTHER ROADS	
TRAILS	
SURVEYED LINES	
TOWNSHIPS, BASE LINES, ETC.	
LOTS, MINING CLAIMS, PARCELS, ETC.	
UNSURVEYED LINES	
LOT LINES	
PARCEL BOUNDARY	
MINING CLAIMS ETC.	
RAILWAY AND RIGHT OF WAY	
UTILITY LINES	
NON-PERENNIAL STREAM	
FLOODING OR FLOODING RIGHTS	
SUBDIVISION OR COMPOSITE PLAN	
RESERVATIONS	
ORIGINAL SHORELINE	
MARSH OR MUSKEG	
MINES	
TRAVERSE MONUMENT	

DISPOSITION OF CROWN LANDS

TYPE OF DOCUMENT	SYMBOL
PATENT, SURFACE & MINING RIGHTS	
" SURFACE RIGHTS ONLY	
" MINING RIGHTS ONLY	
LEASE, SURFACE & MINING RIGHTS	
" SURFACE RIGHTS ONLY	
" MINING RIGHTS ONLY	
LICENCE OF OCCUPATION	
ORDER-IN-COUNCIL	
RESERVATION	
CANCELLED	
SAND & GRAVEL	

NOTE: MINING RIGHTS IN PARCELS PATENTED PRIOR TO MAY 6, 1912, VESTED IN ORIGINAL PATENTEES BY THE PATENTED LANDS ACT, R.S.O. 1970, CHAP. 280, SEC. 64, SUBSECTION 1.

GRID ZONE: 17



SCALE 1:20 000

NOTES

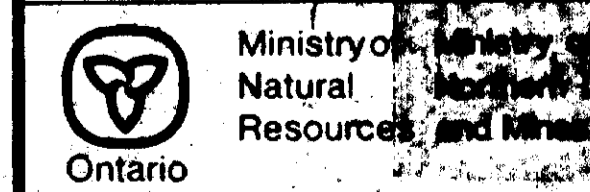
Subdivision of this township into lots and concessions has been annulled with the exception of lots 1, 2 and 11, Con II.
Area designated CL 1664 lies within the limits of W.P.L.A. 101 for Surface Rights Only.
400 FOOT SURFACE RIGHTS RESERVATION AROUND ALL LAKES AND RIVERS.

THE INFORMATION THAT APPEARS ON THIS MAP HAS BEEN COMPILED FROM VARIOUS SOURCES AND ACCURACY IS NOT GUARANTEED. THOSE WISHING TO STAKE MINING CLAIMS SHOULD CONSULT WITH THE MINING RECORDER, MINISTRY OF NORTHERN DEVELOPMENT AND MINES, FOR ADDITIONAL INFORMATION ON THE STATUS OF THE LANDS SHOWN HEREON.

TOWNSHIP 2.14513

PORTER

M.N.R. ADMINISTRATIVE DISTRICT
ESPANOLA
MINING DIVISION
SUBURRY
LAND TITLES / REGISTRY DIVISION
SUBURRY



ORIGINAL COMPILATION MARCH, 1987
REVISED
G-2865