

Diamond Drilling



010

Township of BOON
(Formerly Twp.123)

Report NO: 10

Work performed by: Silcross Copper Mines Ltd.

Claim NO	Hole NO	Footage	Date	Note
53829	3	308.0'	Nov/52	
	4	309.0'	Nov/52	
	5	274.0'	Nov/52	
	6	99.0'	Nov/52	
53837	7	500.0'	Nov/52	
	8	503.0'	Dec/52	
	9	326.0'	Dec/52	
53830	1	303.0'	Oct/52	
	2	389.0'	Nov/52	
<i>TOTAL: 9 DH</i>		<i>3011.0 FT</i>		

Notes:

SILCROSS COPPER MINES LTD.

TOWNSHIP 123 - DIST. OF ALGOMA

LOG OF DILFORD D. ILL. HOLE NO. 1

.....

Location - 202' South and 280' West from No. 1 Post of Claim 553830

Bearing - South 15° East Started - October 27, 1952

Dip - 60° Completed - " 30 "

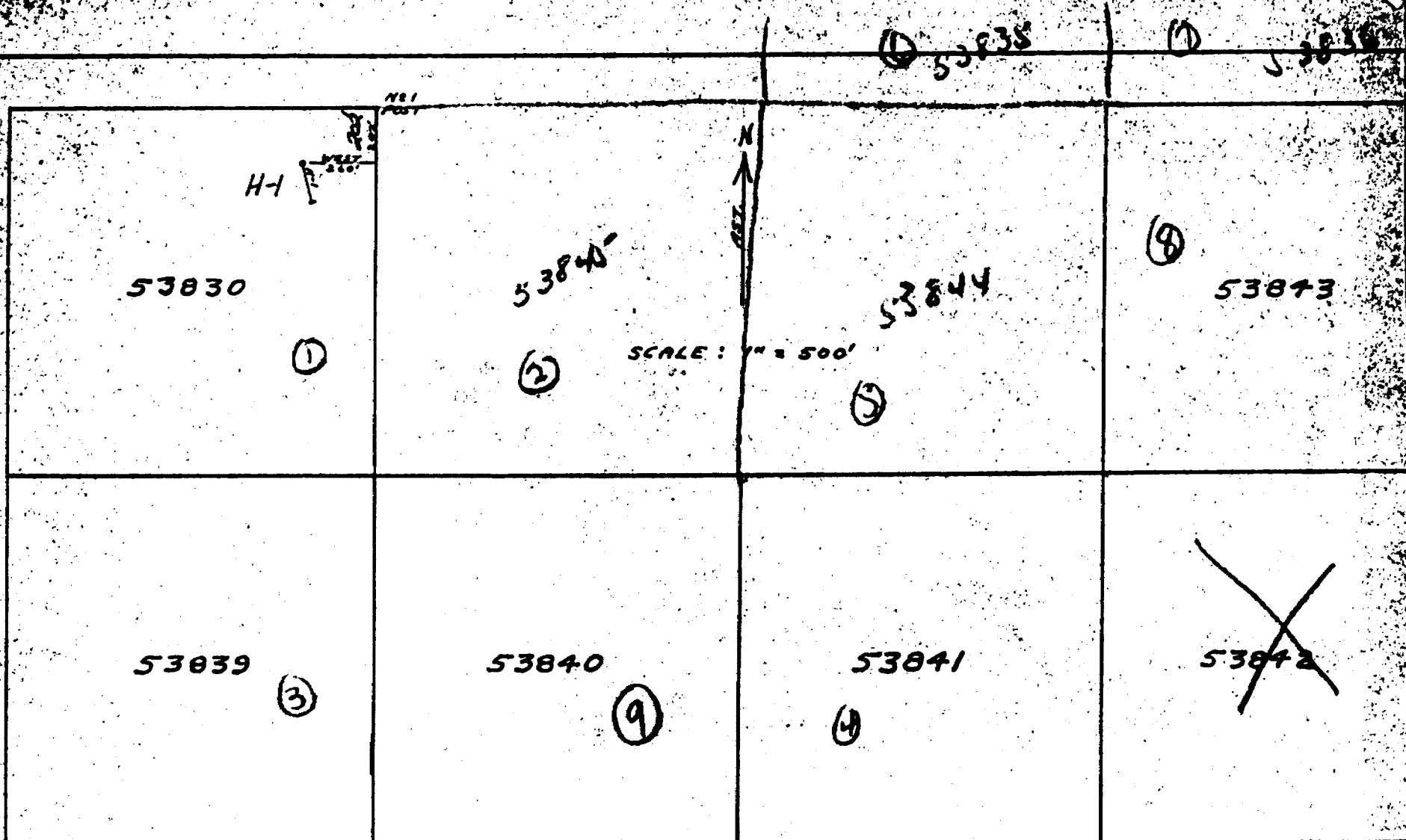
Length - 303 Feet Logged by - H. Macdonald
Simmins, Ont.

.....

<u>Footage</u>	<u>Description</u>
0 - 4	Casing
4.0 - 21.9	Mixed zone of greenstone and gabbro, brecciated 4-11 - core in 1"-5" lengths 17.3-19.1 - grey feldspathic core
21.9 - 123.0	Andesite, dark grey, sheared at 65° to core and having a few seams of white carbonate, rock is chloritized 22.5-23.7 - blocky core 54.5-56.0 - some pyrite, chalcocite and pyrrhotite 88.2 - slight oxidation over 5" of broken core 88.7-90.5 - scattered and very sparse pyrite, core is weakly magnetic in places due to some fine pyrrhotite 97-100 - frequent bands of dark material up to 1" 105.1 - seam of pyrite 109-115.4 - black schist
123.0 - 131.7	Red Granite, coarse and with sharp contacts above and below 123.2 - 1" 25% pyrite and pyrrhotite
131.7 - 302.6	Gabbro, fine textured to 145.5, then becomes coarser and continues uniformly so to about 296' and from there on becomes dense without prominent feldspar crystals
302.6 - 303.0	Red Granite, contact sharp 303 - End of hole

.....

CORE IS STORED IN
BOXES ON THE
PROPERTY.
SIZE - 15/16"



53830

①

53840

②

53844

⑤

53843

⑧

53839

③

53840

⑨

53841

④

~~53842~~

SCALE: 1" = 500'

CLAIM GROUPING FOR D.D.N. No. 1
 SILCROSS COPPER MINES LTD.
 TWP. 123 - DIST. OF ALGOMA

1" = 500'

SILCROSS COPPER MINES LTD.

TOWNSHIP 123 - DIST. OF ALGOMA

LOG OF DIAMOND DRILL HOLE No. 2

.....

Location - 202' South; thence 260' east; thence 81' N60°W from No. 1 Post
of Claim 853830
Bearing - South Started - November 1, 1952
Dip - 60° Completed - " 5 "
Length - 389 Feet Logged by - R. MacDonald
Timmins, Ont.

.....

<u>Footage</u>	<u>Description</u>
0 - 8	Casing
8.0 - 23.4	Grey Granite
23.4 - 64.4	Mixture of granite and greenstone with white and red feldspars locally prominent 18-19 - inclusions of dark fragmental material 22.8 - some leached slips over 8"
64.4 - 143.0	Greenstone, basic, dark grey to greyish black, generally dense 74.0 - 2" quartz and feldspar 83.4-85.8 - some pyrite and pyrrhotite 85.6 - pyrrhotite and chalcopyrite over 3" of core 101-140 - rock is sheared with seams of quartz and feldspar alternating with seams of dark green material, odd seam of pyrite & pyrrh. 139.6 - 1" syenite 135-140 - sparse pyrrhotite 141.5 - 4" white feldspar in bands
143.0 - 250.0	Gabbro; fine textured to 149', then becomes coarse and continues uniformly so to about 245' 232-242 - some blocky core
250.0 - 297.0	Mixed zone of gabbro, greenstone and granite; very basic to 260.6 and having very narrow bands and seams of dark material along with threads of same, bands 60° to core 250.8 - 3" band of pyrrhotite and chalcopyrite
297.0 - 303.7	Red Granite
303.7 - 311.1	Mixed zone of granite and gabbro; contact gradational above and sharp below
311.1 - 318.1	Red Granite; contacts sharp above and below 315.9 - 2" quartz
318.1 - 319.6	Similar to 303.7-311.1
319.6 - 389.0	Red Granite, very coarse 353-354.6 - syenite with some dark threads 357.3 - 1" quartz stringer 75° to core, epidote at contacts 389 - End of Hole

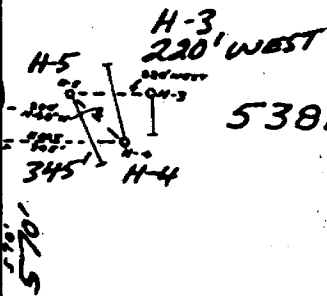
53831

53832

53833

53828

(200'
N40°W)



53829

53838

*All
records
to
be
checked*

CLAIM GROUPING FOR D.B.Ns 3 - 4 & 5
 SILCROSS COPPER MINES LTD.
 TWP. 123 - DIST. OF ALGOMA
 SCALE: 1" = 500'
 1" = 500'

SILCROSS COPPER MINES LTD.

TOWNSHIP 123 - DIST. OF ALGOMA

LOG OF DIAMOND DRILL HOLE No. 6

.....

Location - 735' North and 305' East from No. 3 Post of Claim 53829

Bearing - South 15° East

Started - Nov. 20, 1952

Dip - 50°

Completed - " 21 "

Length - 99 Feet

Logged by - R. MacDonald
Timmins, Ont.

.....

Footage

Description

0 - 4 Casing

4.0 - 47.0 Basic Lava, generally dense, dark green color
4.5 - 1" orthoclase
31-33 - grains of blue quartz present

47.0 - 72.2 Granite-greenstone mixture with the granitoid character
predominating, red and grey feldspars with more of the latter
55-74 - some blocky sections of core
64.8 - 1" epidote 66.8 - seam of pyrite

72.2 - 99.0 Basic Lava, dense, dark and hard
85.7 - granitoid over 6" of core
87.0 - a few seams of quartz over 5"
91.0 - seam of pyrite and sparse pyrite over 6"
95.3 - quartz in slip
96.0 - 1/4" quartz stringer parallel to core for 7"
99.0 - End of Hole

.....

53832



53833

53834

305'
755'
EAST
H-6 53829

X
53830

X
53835

755'

53838

X
53840

1" = 500'

CLAIM GROUPING FOR D.C.N. NO. 6
SILCROSS COPPER MINES LTD.
TWP. 123 - DIST. OF ALGOMA

SCALE 1" = 500'

SILCROSS COPPER MINES LTD.

TOWNSHIP I23 - DIST. OF ALGOMA

LOG OF DIAMOND DRILL HOLE No. 8

.....

Location - 780' S85°08'W; thence 45' S35°W; thence 5' N58°E from No. I
 Post of Claim 53837.
 Bearing - South 58° West Started - Dec. 2, 1952
 Dip - 45° Completed - " 6 "
 Length - 503 Feet Logged by - R. MacDonald
 Timmins, Ontario.

.....

Footage

Description

0 - 7	Casing
7.0 - 503.0	Gabbro; coarse grained at start but quickly changing to finer grain; very dark color to about 245' at which point exterior of core becomes lighter colored and rock becomes softer due to development of chlorite.
	7.2 - 6" gabbro-granite mixture with some fine pyrite
	8-12 - blocky core
	19.6 - 5" gabbro-granite mixture
	36-41 - ditto
	52.5-56.5 - total of 3' of fairly massive pyrrhotite, some disseminated pyrite and chalcopyrite
	60-65 - total of 2.6' of heavy pyrrhotite with 3" of massive pyrrh. at 63.4; small amount of pyrite and chalcopyrite
	68.5-69.1 - massive pyrrhotite
	77.5 - patch of fine pyrite
	84.5-108 - gabbro-granite mixture with frequent streaks and short lengths of epidotized core
	89.7 - 1" red granite
	122.4-124.6 - 90% barren quartz-carbonate
	126.6-128.2 - quartz-carbonate with 6" of irregular massive chalcopyrite with very small proportion of pyrrhotite at 127'
	129.8 - 6" heavy pyrite
	134.4 - patch of pyrite
	139.8 - seam " "
	141-142 - 90% barren quartz-carbonate vein
	143.5-146.5 - some reddish streaks of axionite
	147 - 6" granitized core
	238.5 - 1" quartz 30° to core
	239.5-253 - very numerous grains of blue quartz
	245-403 - rock is softer due to presence of chlorite; heavily chloritized 295-370
	288-290 - silicified
	361 - slightly granitized over 6"
	363.8 - 6" of 70% quartz-carbonate
	406-407.5 - silicified
	416-419 - 90% grey feldspar
	427 - lost core 2'
	435-444.8 - gabbro-granite mixture
	453-482.6 - some short sections predominantly red granite
	482.6-496.6 - epidotized locally in streaks and patches
	503.0 - End of Hole

NOT TO BE REMOVED FROM
 THE OFFICE OF THE REGISTRAR
 OF THE MINES
 SAULT STEELES DISTRICT, ONT.

WORK

2/3

SILCROSS COPPER MINES LTD.

3/4

TOWNSHIP I23 - DIST. OF ALGOMA

LOG OF DIAMOND DRILL HOLE NO. 9

.....

Location - 32' N12°W	from No. 2 Post of Claim 53846	Started - Dec. 6, 1952
Bearing - South 12°	East	Completed - " II "
Dip - 30°		Logged by - R. MacDonald
Length - 326 Feet		Timmins, Ont.

.....

Footage

Description

0 - 16 Casing

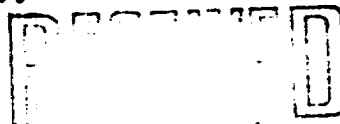
16.0 - 271.8 Gabbro, generally altered, varies from fine to medium texture,
 18.6 - 5" red granite
 62-65 - darker and very dense
 69.4 - epidotized 2"
 70.7 - granitized 10"
 115-223 - rock is darker in color and carries some disseminated grains of magnetite
 128.2 - sparse pyrite
 143.6 - " " over 3" of core
 154 - epidotized slip
 156 - 8" of 50% quartz
 178.5 - epidotized slip parallel to core for 6"
 186.7 - 1" of 50% quartz with sparse pyrite
 187 - 1" 50% quartz
 187.2 - 2" ditto
 188.1 - 1" odd pyrite
 200.3 - a few amygdules over 10" of core
 223 - rock becomes greenish and softer, chloritized
 246.8 - 3" of 75% quartz with odd pyrite
 266.6 - patch of chalcopyrite and pyrrhotite

271.8 - 319.4 Gneiss; has regular and irregular narrow dark banding along with narrow bands and streaks of quartz
 288.8-302 - some grey feldspathic core
 299.8 - seam of chalcopyrite

319.4 - 326.0 Gabbro; fine grained
 324-326 - some streaks of grey feldspar
 326 - End of Hole

.....

NOT TO BE REPRODUCED FROM
 THE OFFICIAL RECORDS OF THE
 GEOLOGIST, DEPARTMENT OF MINES
 SAULT STE. MARIE, ONT.



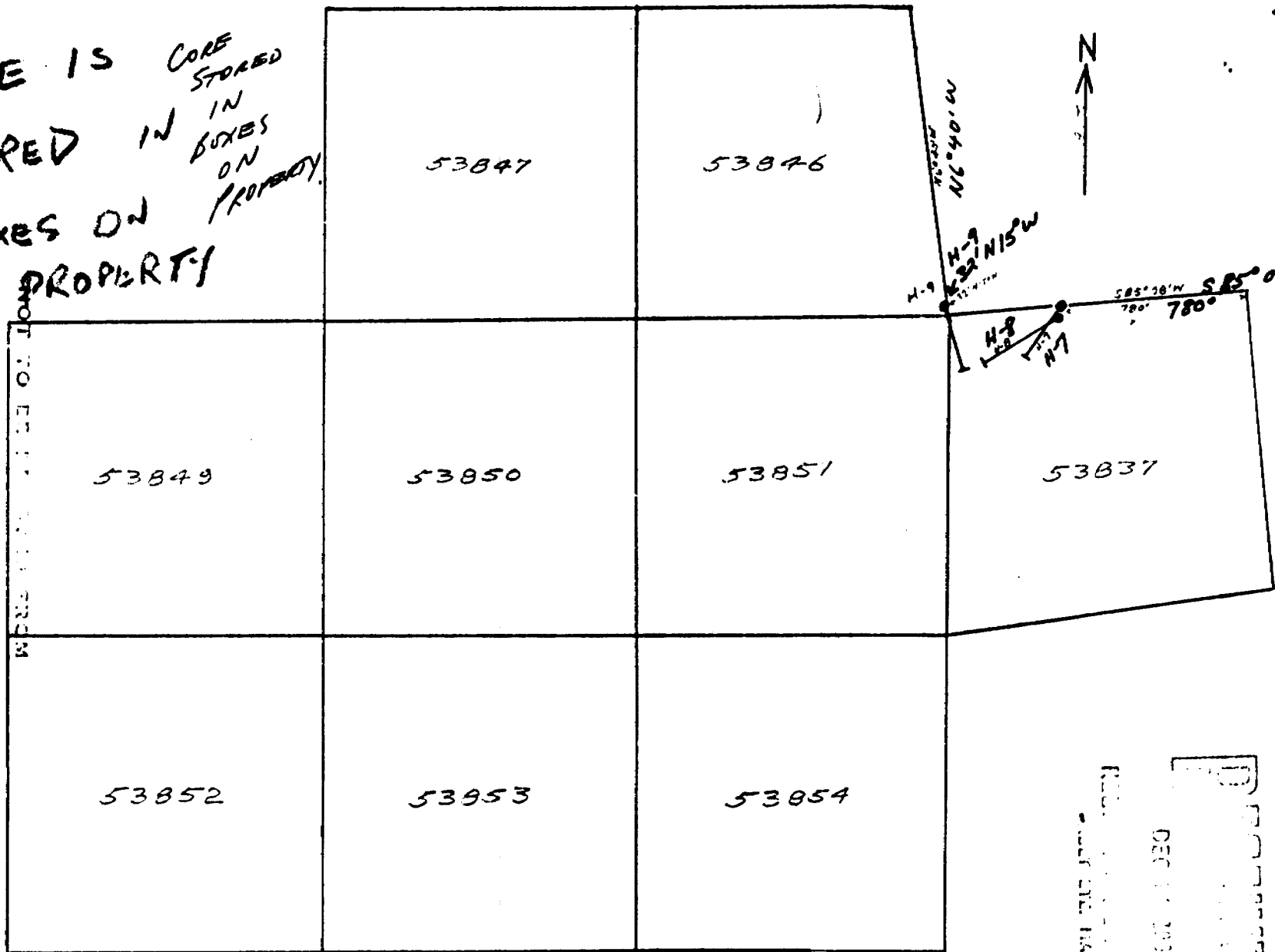
DEC 11 1952

RECORDED BY GEOLOGIST
 SAULT STE. MARIE

SECRETARY WORK

CORE IS STORED IN BOXES ON PROPERTY.

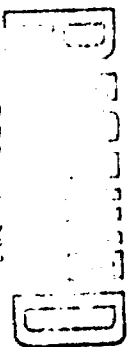
THE OFFICE OF THE DISTRICT GEOLOGIST, DEPT. OF MINES SAULT STE. MARIE, QUE.



NOT TO BE USED FROM

RECORDED IN DISTRICT OFFICE

DEC 17 1903



1" = 600'

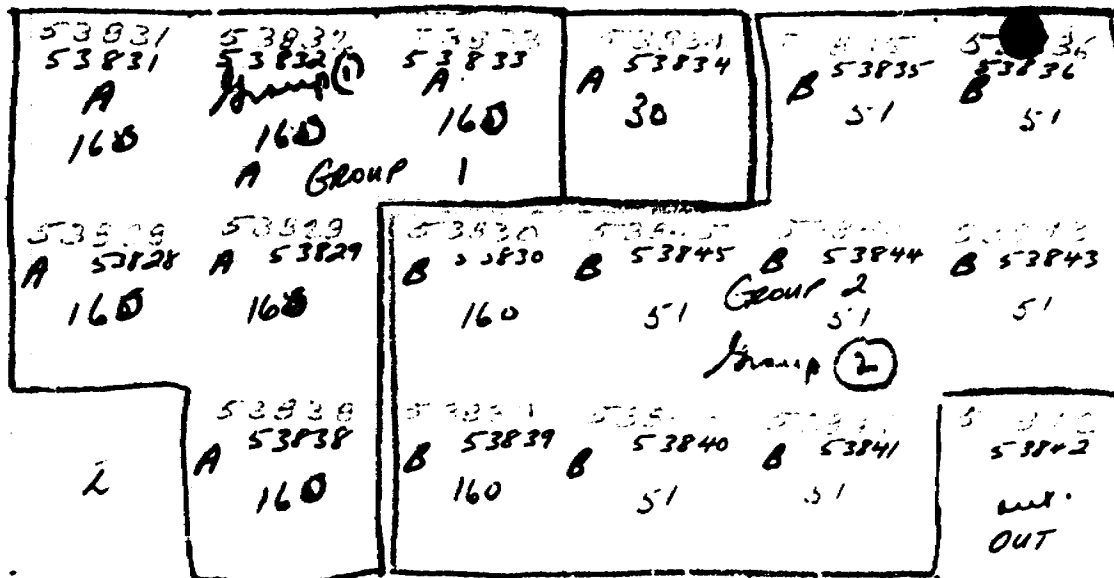
HOLES 7-8-9
CLAIM GROUPING
SILCROSS COPPER MINES LTD.
TWP. 123 - DIST. OF ALGOMA
SCALE: 1 INCH = 600 FT.

27 SILCROSS UNPATENTED CLAIMS
 27 SILCROSS UNPATENTED CLAIMS

53848 53849 53844
 53848 53847 53846

53849 53850 53851 53837
 53849 53850 53851 53837

53852 53853 53854



Group 1: A
 Group 2: B



41J08NE0014 0010A1 B00N

900

RECEIVED
AUG 30 1952

PROVINCIAL GEOLOGIST
SAULT STE. MARIE

Feb. 21, 1952

Silcross Copper Mines Ltd.,
3 Pine St. North,
Timmins, Ontario.

Dear Sirs:

I am preparing a report on copper properties in Ontario and would like to get some information about your copper-nickel prospect in township 123, Algoma district.

Could you tell me if this property was once worked by Mr. Belanger of Timmins and Mr. R.M. Ritchie of Massey? Could you tell me the location of the main showings by claim numbers? Do you have any maps, plans, engineer's reports, or drilling logs covering the work done to date? Could you send me a prospectus of your company?

Any maps or reports you could mail me would be returned shortly.

Any information you can provide on developments to date would be much appreciated.

Yours very truly,

J.E. Thomson
Asst. Provincial Geologist



ONTARIO
DEPARTMENT OF MINES

SUDBURY MINING DIVISION
SUDBURY, ONTARIO

November 28, 1952.


Dr. M. E. Hurst,
Provincial Geologist,
Ont. Dept. of Mines,
Parliament Buildings,
TORONTO, Ontario.

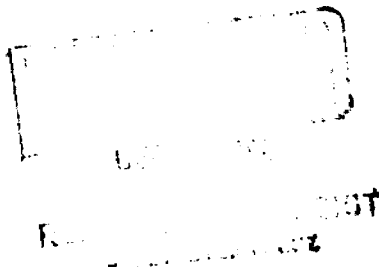
Dear Sir:-

Enclosed please find logs of diamond drilling
submitted by Silcross Copper Mines Ltd., on their mining claims
in Township 123.

Yours very truly,

JRM:GA
Encls.


J. R. McGinn,
Mining Recorder.



Dec. 1, 1952

Dear Sir:

This will acknowledge receipt of your letter of November 28 and enclosed logs of diamond drilling submitted by Silcross Copper Mines Ltd. on their mining claims in Township 123.

Yours very truly,

M. E. Hurst
Provincial Geologist

Mr. J. R. McGinn,
Mining Recorder,
Ontario Department of Mines,
Sudbury. Ontario

OFFICE OF MINING RECORDER



ONTARIO

DEPARTMENT OF MINES

SUDBURY MINING DIVISION

SUDBURY, ONTARIO

December 15, 1952.

Dr. M. E. Hurst,
Provincial Geologist,
Ont. Dept. of Mines,
Parliament Buildings,
TORONTO, Ontario.



Dear Sir:

Please find enclosed herewith diamond drill logs
and locational plan of drilling done in Twp. 123 and
submitted by Silcross Copper Mines Ltd.

Yours truly,

A handwritten signature in cursive script, appearing to read "J. R. McGinn".

J. R. McGinn,
Mining Recorder.

DAJ.

Encl.

ABSTRACTED

Dec. 18, 1952

Dear Sir:

This will acknowledge receipt of your letter of December 15 and enclosed diamond drill logs and locational plan of drilling done in Township 123, submitted by Silcross Copper Mines.

Yours very truly,

M.E. Hurst

4-2/3



REGIST

Mr. J.R. McGinn, Mining Recorder,
Ontario Department of Mines,
Sudbury, Ontario

REGISTRATION WORK

DOMEXPLORATION (CANADA) LIMITED

SUITE 804 - BANK OF MONTREAL BUILDING
50 KING STREET WEST

TELEPHONE
EM. 3-8417

TORONTO 1, ONT.

CABLE ADDRESS
DOMEXPLOR

November 14th, 1957

Dr. M. E. Hurst,
Provincial Geologist,
Parliament Buildings,
TORONTO, Ontario.

Dear Dr. Hurst:

I would appreciate it if I could
obtain information pertaining to a diamond drill²³
hole program on claims S53828 - 30 inclusive,
172 - S53838-39-51 recorded November 26th, 1952.

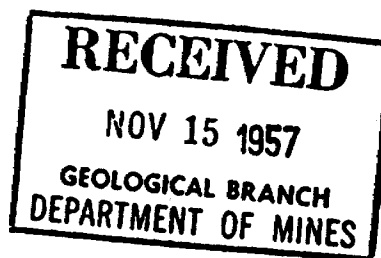
If I could have the information
for a few days I could have it photostated or
if you do not wish to release it, I could go
up to the Parliament Buildings and copy it.

Yours very truly,

P. W. Richardson

PWR:mc

P. W. Richardson.



Nov. 15, 1957

Mr. P.W. Richardson,
Dome Exploration (Canada) Limited
904, 50 King Street West,
Toronto 1.

Dear Mr. Richardson:

In reply to your inquiry of
November 14 I may say that we have copies
of logs of Holes 1 to 9 inclusive submitted
by Silcross Copper Mines Limited on its
property in Township 123, District of
Algoma. It would appear to include claims
S53828 - 30 inclusive, S53838-39-51.

These records cannot be
released for photostating but will be
available for copying at Room 1402, East
Block, Parliament Buildings.

Yours very truly,

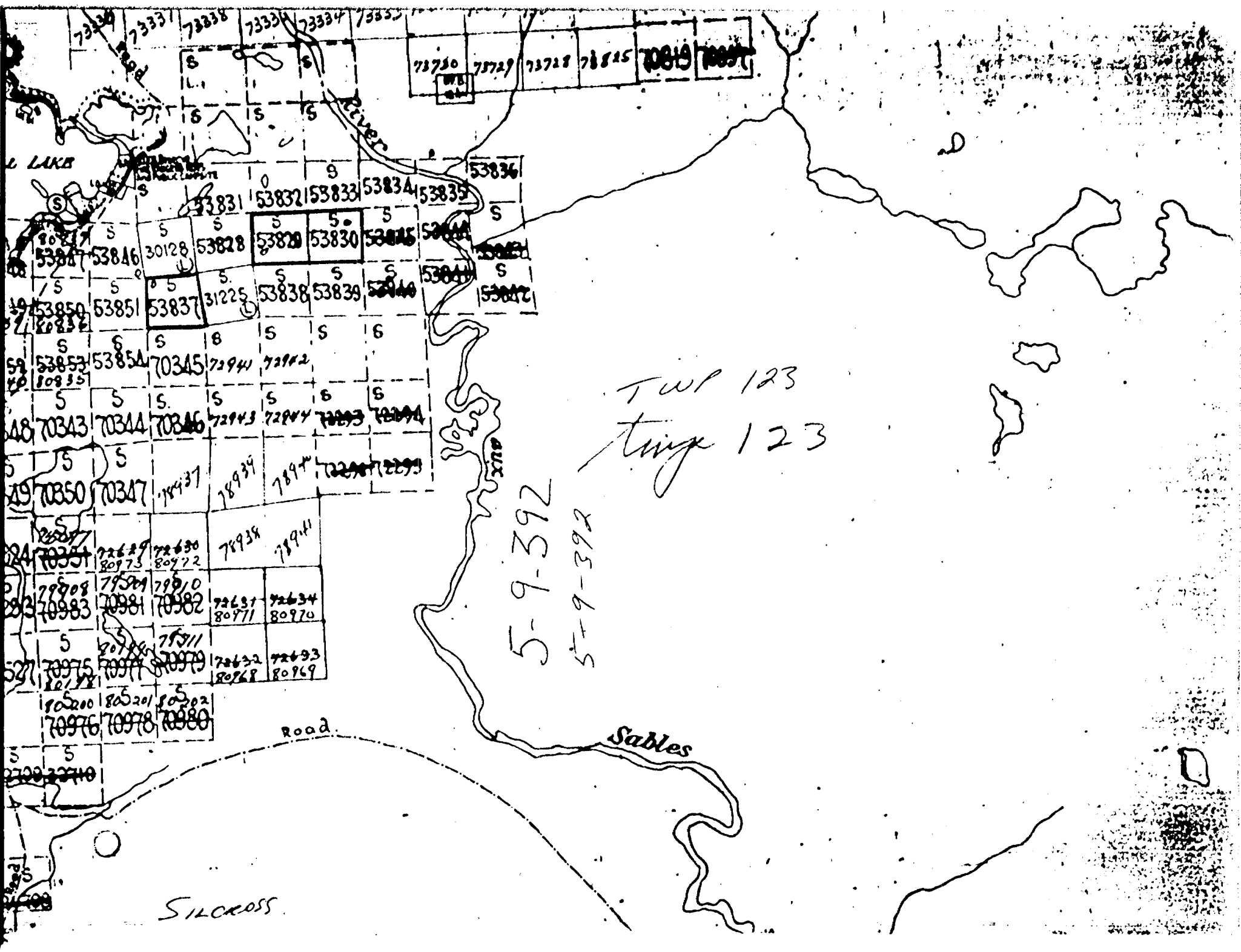
M.E. Hurst
Provincial Geologist

*attended &
copied*

Nov. 26/57

*attended &
copied*

Nov. 26/57



73330 73331 73332 73333 73334 73335
73750 73751 73752 73753 73754 73755

53831 53832 53833 53834 53835
53836
53837 53838 53839 53840
53841 53842
53843 53844 53845 53846
53847 53848 53849 53850 53851 53852
53853 53854
70345 72941 72942
70343 70344 70346 72943 72944 72945 72946
70347 78937 78938 78939 78940 72947 72948
70351 72629 72630 78934 78941
80973 80972
79908 79909 79910 72631 72634
79983 79981 79982 80971 80970
79975 79976 79977 79979 72632 72633
80968 80969
80520 80521 80522
79976 79978 79980

TWP 123
Twp 123

5-9-392
5-9-392

Road

Sables

SILCROSS