



010

### Diamond Drilling

Township of GEROW  
(Formerly Twp.130)

Report N<sup>o</sup>: 11

Work performed by: EL PEN-REY OIL & MINES LIMITED

Claim N <sup>o</sup>	Hole N <sup>o</sup>	Footage	Date	Note
95595	E-10	639.0'	Sept/56	
	E-13	720.0'	Oct/56	
	E-12	849.0'	Oct/56	
95590	E-11	589.0'	Sept/56	
	E-8	736.0'	Aug/56	
	E-7	375.0'	Aug/56	
	E-6	635.0'	Aug/56	
	E-5	460.0'	Aug/56	
	E-4	465.0'	Aug/56	
	E-2	501.0'	July/56	
	E-3	270.0'	July/56	
	E-1	358.0'	July/56	
	E-14	496.0'	Oct/56	
	E-9	715.0'	Aug/56	

14 DH 7808 FT.

Notes:

# DIAMOND DRILL RECORD

**PROPERTY** EL PEN-REY OIL & MINES LIMITED  
 CLAIM NO. 95595  
 LATITUDE 130 W  
 DEPARTURE 2840 W  
 ELEVATION 5003.20  
**HOLE NO.** E-10  
**START** September, 1956.  
**FINISH** September, 1956.  
**DEPTH** 639  
**LOGGED** L. S. Trenholme  
**DRILL CO.** Baderski

DEPTH FEET	FORMATION	SAMPLE NO.	SAMPLE LENGHT	OZ. GOLD	OZ. SILVER	% COPPER
0 - 5.0	Casing.					
5.0 - 639	E-B Gabbro (?) Darker & much less altered than rock to east. Quarts-gabbro phase with clusters feldspar grains but lacks coarse alteration nodules seen elsewhere. Local dissen. Ph. where more siliceous.					
59 - 70	Much fine biotite, neg. min..					
70 - 130	More chloritic, neg. min..					
130 - 200	Generally coarser, felspathic, neg. min..					
200 - 639	Same, dioritic; low quartz. Fairly typical diorite to end. Massive, only slight changes in texture.					
639	END HOLE E-10.					

# DIAMOND DRILL RECORD

**PROPERTY** EL PEN-REY OIL & MINES LIMITED **HOLE NO.** E-13 **START** October 10, 1956.  
 EAST BULL LAKE, TOWNSHIP 130  
**CLAIM NO.** 95595 **DEPTH** **BEARING** **DIP** **DEPTH** **BEARING** **DIP** **FINISH** October, 1956.  
**LATITUDE** 585 N **Collar** N 50° W 45° **LEGEND**  
**DEPARTURE** 3685 W **op.** - Chalcopyrite **DEPTH** 720'  
**ELEVATION** **py.** - Pyrite **L. S. TRENHOLME AND**  
**J. GUTCHER**  
**DRILL CO.** Baderski  
**LOGGED**

DEPTH FEET	FORMATION	SAMPLE NO.	SAMPLE LENGTH	OZ. GOLD	OZ. SILVER	% COPPER
0 - 5.0	Casing.					
5.0 - 555	E-B Gabbro: Medium alteration, mainly chlorite; irregular feldspar spotting.					
178 - 220	Increase biotite, few grains py., few specks op.					
555 - 566	Diabase ? Fine grain, dark.					
566 - 590	Gabbro: Fine grain.					
590 - 611	Diabase. " "					
611 - 720	Diabase ? Some quartz str. with a little pyrite.					
720	END HOLE E-13.					

NOT TO BE REMOVED FROM  
 THE OFFICE OF THE RESIDENT  
 GEOLOGIST, ONT. DEPT. OF MINES  
 BAULY ST. MARIÉ, ONT.

**RECORDED**  
**INDEXED**

RECEIVED BY  
 EAST BULL LAKE

WORK

# DIAMOND DRILL RECORD

EL PEN-REY OIL & MINES LIMITED

PROPERTY EL PEN-REY OIL & MINES LIMITED HOLE No. E-12 START October, 1956.  
 CLAIM NO. 95595 TOWNSHIP 130  
 DEPTH BEARING DIP DEPTH BEARING DIP FINISH October, 1956.  
 LATITUDE 540 N Collar - 90° LOGGED DEPTH 849  
 DEPARTURE X625 W op. - Chalcopyrite LOGGED L. S. Trunholme  
 ELEVATION \_\_\_\_\_ ph. - Pyrite DRILL CO. Baderski  
 \_\_\_\_\_ ph. - Pyrrhotite

DEPTH FEET	FORMATION	SAMPLE NO.	SAMPLE LENGHT	OZ. GOLD	OZ. SILVER	% COPPER
0 - 5.0	Casing.					
5.0 - 673	E-B Gabbro Mnd. alteration: Slight mottling. Extensive chlorite; relic dark pyroxenes with brown (biotite ?) alt.. Low scattered ph., py., op. to 35'. No quartz eyes.					
35 - 177	Same rock, neg. min..					
177 - 296	Mainly chlorite & biotite, massive, neg. min.					
296	3" fault gouge at 70°.					
296 - 320	Mottled texture small feldspar knots.					
320 - 390	Blotchy, irregular chlorite, few feldspar clusters.					
390 - 435	Increasing feldspar. 446 splash op.					
435 - 642	Mottled, variable feldspar. Very little min. Splash op. at 628.					
642 - 673	Feldspar knots, few nests ph..					
673	Sharp contact at 15°.					

# DIAMOND DRILL RECORD

Sheet No. 2

PROPERTY EL PEN-REY OIL & MINES LIMITED

HOLE NO. R-12

START .....

TOWNSHIP 130

CLAIM NO. .... DEPTH BEARING DIP DEPTH BEARING DIP FINISH .....

LATITUDE ..... sp. - Chalcopyrite DEPTH .....

DEPARTURE ..... py. - Pyrite LOGGED I. S. Trenholme

ELEVATION ..... ph. - Pyrrhotite DRILL CO. Raderski

DEPTH FEET	FORMATION	SAMPLE NO.	SAMPLE LENGTH	OZ. GOLD	OZ. SILVER	% COPPER
673 - 824.5	Diabase. F.O. olivine Diabase, chilled to 678. Dark green, white & pale speckling to 2 mm. Massive, hard. Fine q-z fracture filling at 70° - 80°. No pyrite dikes.					
818 - 824.5	Chilled; contact about 15°.					
824.5 - 849	<u>Intrusive Breccia</u> Gneissic syenite with blebs & str. quartz. Dense green dikes or inclusions (30%).					
849	END HOLE R-12.					

# DIAMOND DRILL RECORD

EL. PEN-KEY OIL & MINES LIMITED  
TOWNSHIP 130

E-11

September, 1956.

PROPERTY  
95590

HOLE NO.

START

September, 1956.

CLAIM NO. 660 N

DEPTH COLLAR BEARING DIP

DEPTH LEADING NO. DIP

FINISH

LATITUDE 1900 W

250' - 90°

op. - Chalcopyrite  
py. - Pyrite  
ph. - Pyrrhotite

DEPTH

L. S. Trenholme

DEPARTURE 5003.81

535 - 90

LOGGED

Baderski

ELEVATION

DRILL CO.

DEPTH FEET	FORMATION	SAMPLE NO.	SAMPLE LENGTH	OZ. GOLD	OZ. SILVER	% COPPER
0 - 5.0	Casing.					
5.0 - 23.0	Gabbro Fine grain massive (diabase ?).					
23.0 - 40.0	DIKE Dark, andesitic, dense, few syenite str.					
40.0 - 49.5	GABBRO As at start, few syenite str.					
49.5 - 358	E.B. Gabbro Mottled, white feldspar clusters. Patchy syenite alt., blue quartz-eyes, scattered grains ph. & op., few seams op..					
121 - 132	Green, chloritic, low min..					
132 - 142.5	Same sheared, 6" mud seam at 142, C.A. 20°.					
142.5 - 156	Syenite breccia, sheared.					
156 - 264	No quartz eyes, altered, neg. min. Mottled dark & med. green, few carb.-sericite shears at 50° - 60°.					
264 - 313	Gradual increase chlorite, and quartz eyes, dissem. op.. Local 0.2% cu (est.).					
313 - 358	Intermittent minor op. with few quartz eyes.					
358 - 549	DIABASE (?) (Older) small feldspar laths in very dark equi-granular matrix. Scattered white feldspar knots. Neg. min..					

# DIAMOND DRILL RECORD

EL PEN-REY OIL & MINES LIMITED

Sheet No. 2.

PROPERTY

TOWNSHIP 190

HOLE No. E-11

START

CLAIM NO.

DEPTH

BEARING

DIP

DEPTH

BEARING

DIP

FINISH

LATITUDE

op. - Chalcopyrite

DEPTH

DEPARTURE

py. - Pyrite

LOGGED

ph. - Pyrrhotite

ELEVATION

DRILL CO.

DEPTH FEET	FORMATION	SAMPLE NO.	SAMPLE LENGHT	OZ. GOLD	OZ. SILVER	% COPPER
417 - 442	Few syenite dikelets, few grains py., ph..					
499, 526	Thin seams op. at 87°.					
549 - 589	<u>Intrusive Breccia</u> Diabase shot with pink & grey syenite dikes. A few dense gray-green sections may be lava inclusions.					
589	END HOLE E-11.					

NOT TO BE REMOVED FROM  
THE OFFICE OF THE RESIDENT  
GEOLOGIST, ONT. DEPT. OF MINES  
CAULT STE. MARIE, ONT.

ADJUTANT

WORK



LIST

# DIAMOND DRILL RECORD

PROPERTY EL PEI-KEY OIL & MINES LIMITED HOLE No. R-8 START August, 1956.  
TOWNSHIP-130  
 CLAIM NO. 95590 DEPTH BEARING DIP DEPTH BEARING DIP FINISH 736  
 LATITUDE 800 N Collar 33 E 60° op. - Chalcopyrite DEPTH 736  
 DEPARTURE 2400 W 300 - 58° py. - Pyrite LOGGED L. S. Trenholme  
 ELEVATION 5001.68 680 - 54° ph. - Pyrrhotite DRILL CO. Baderski

DEPTH FEET	FORMATION	SAMPLE NO.	SAMPLE LENGHT	OZ. GOLD	OZ. SILVER	% COPPER
0 - 5.0	Casing.					
5.0 - 551	E.B. Gabbro					
142 - 146.5	Fresh f.g. diabase C.A. 40°.					
152.5 - 164.5	" " "					
164.5 - 223	Minor syenite injections. Small patches op. 362 - 364.					
433 - 485.5	Scattered small nests op.					
485.5 - 495	White feldspar dike, a little op. in fractures.					
495 -	Mottled white felds. alt. 525 - 542 Scattered fine op.					
551 - 654	Intrusive Complex: Similar E-C: 50% syenite in dense grey-green lava ? patches & str. - quartz, much epidote, few grains py.					
604	Small patch op.					
654	Shear contact at 20°.					
654 - 736	<u>Older Diabase</u> Dark, with white speckling becoming gradually coarser; a few dense sections may be lava inclusions.					

NOT TO BE REMOVED FROM  
 THE OFFICE OF THE INCIDENT  
 GEOLOGIST GENERAL DEPT. OF MINES  
 SAULT STE. MARIE, ONT.  
 ASSESSMENT WORK



# DIAMOND DRILL RECORD

Sheet No. 2

PROPERTY EL PER-REY OIL & MINES LIMITED HOLE NO. E-8 START \_\_\_\_\_  
TOWNSHIP 190

CLAIM NO. \_\_\_\_\_ DEPTH \_\_\_\_\_ BEARING \_\_\_\_\_ DIP \_\_\_\_\_ DEPTH END BEARING \_\_\_\_\_ DIP \_\_\_\_\_ FINISH \_\_\_\_\_

LATITUDE \_\_\_\_\_ op. - Chalcopyrite DEPTH \_\_\_\_\_  
 py. - Pyrite

DEPARTURE \_\_\_\_\_ ph. - Pyrrhotite LOGGED I. S. Trenholme

ELEVATION \_\_\_\_\_ DRILL CO. Baderski

DEPTH FEET	FORMATION	SAMPLE NO.	SAMPLE LENGTH	OZ. GOLD	OZ. SILVER	% COPPER
736	695 - 721 Alteration nodules probably epidote, chlorite, biotite. Sharp contacts, bounded by dense dikes or inclusions.  END HOLE E-8.					

NO. OF SAMPLES TAKEN FROM  
 THIS DEPTH INTERVAL  
 GOLD CONTENT  
 SILVER CONTENT  
 PERCENTAGE OF MINERAL  
 MATTER  
 ANALYZED  
 BY  
 DATE

# DIAMOND DRILL RECORD

**PROPERTY** EL PEN-REY OIL & MINES LIMITED **HOLE NO.** E-7 **START** \_\_\_\_\_  
EAST BULL LAKE, TOWNSHIP 130  
**CLAIM NO.** 95590 **DEPTH** **BEARING** **DIP** **DEPTH** **BEARING** **DIP** **FINISH** August, 1956.  
**LATITUDE** 350 N **Collar** **-** **90°** **op.** **-** chalcopyrite **DEPTH** 3/5  
**DEPARTURE** 2040 W **py.** **-** pyrite **LOGGED** L. S. Trenholme  
**ELEVATION** \_\_\_\_\_ **DRILL CO.** Baderaki

DEPTH FEET	FORMATION	SAMPLE NO.	SAMPLE LENGHT	OZ. GOLD	OZ. SILVER	% COPPER
0 - 2.0	Casing.					
2.0 - 317	E.B. Gabbro					
	Coarse chlorite mottling, low min.. Few grains op. 92.5, 122.5, 170.					
175 - 186	Mottled breccia appearance few grains op. in felsic material.					
186 - 250	50% white feldspar (syenite injection).					
265 - 285	Low biotite-quartz, low op..					
285 - 317	Chloritic, 20% feldspar, neg. min..					
317 - 340.3	F.G. gabbro					
	Chloritic, 20% feldspathic.					
340.3 - 375	"Granite"					
	Pink aplite, epidote knots 30% gabbro inclusions.					
375	END HOLE E-7.					
	Note: Rod measurement 375. Core measurement 380.					

# DIAMOND DRILL RECORD

**PROPERTY** EL PEN-REY OIL & MINES LIMITED **HOLE No.** E-6 **START** \_\_\_\_\_  
EAST SULL LAKE, TOWNSHIP 130  
**CLAIM NO.** 95590 **DEPTH** **BEARING** **DIP** **DEPTH** **BEARING** **DIP** **FINISH** August, 1956.  
**LATITUDE** 960 N **Collar** **South** **-60°** **LEGEND:** **DEPTH** 635  
**DEPARTURE** 2000 W **cp.** **- chalcopyrite** **LOGGED** L. S. Trenholme  
**ELEVATION** \_\_\_\_\_ **py.** **- pyrite** **DRILL Co.** Baderaki  
**ph.** **- pyrrhotite**

DEPTH FEET	FORMATION	SAMPLE NO.	SAMPLE LENGHT	OZ. GOLD	OZ. SILVER	% COPPER	% Ni.
0 - 3.0	Casing.						
3.0 - 38.0	"Gabbro"						
38.0 - 194.5	DIABASE						
194.5 - 317	Gabbro						
196 - 199	Chloritic, scattered cp. (0.3% Cu. est).						
211 - 212.5	Diabase.						
212.5 - 226.7	Mottled, opalescent quartz, biotite, feldspar. Scattered fine cp..						
226.7 - 251	Diabase.						
251 - 312	Strong biotite alt.. Patches ph. & cp. (also blue quartz eyes).						
312 - 317	Pink felspathic (injection ?).						
317 - 334.5	Diabase						
334.5 - 352.5	Andesite (?)						
352.5 - 353.5	Syenite Dike						

NOT TO BE REPRODUCED  
 THE OFFICE OF THE RESIDENT  
 GEOLOGIST, ONT. DEPT. OF MINES  
 SAULT STE. MARIE, ONT.

211

# DIAMOND DRILL RECORD

Sheet No. 2

PROPERTY KL PEK-REY OIL & MINES LIMITED HOLE NO. E-6 START \_\_\_\_\_  
EAST BULL LACK, TOWNSHIP 130

CLAIM NO. \_\_\_\_\_ DEPTH BEARING DIP DEPTH BEARING DIP FINISH \_\_\_\_\_  
 LATITUDE \_\_\_\_\_ Legend Legend Legend DEPTH \_\_\_\_\_  
 DEPARTURE \_\_\_\_\_ cp. - chalcopyrite py. - pyrite ph. - pyrrhotite LOGGED L. S. Trenholme  
 ELEVATION \_\_\_\_\_ DRILL CO. Baderaki

DEPTH FEET	FORMATION	SAMPLE NO.	SAMPLE LENGTH	OZ. GOLD	OZ. SILVER	% COPPER	% NI.
353.5 - 444	Gabbro Altered as before, scattered patches and grains ph. & cp.. 394.2 - 398.5	6569	4.3			0.33	0.09
444 - 610	Gabbro - (Older Diabase ?) - epidote speckling. 444 - C.A. 90°.						
444 - 452.5	Schisting at 70°.						
452.5 - 458.5	White felspathic injection.						
458.5 - 467	Gabbro, chloritic, scattered cp..						
467 - 478	Epidote speckling.						
478 - 483	Younger diabase, hard black dense.						
488 - 495	Younger diabase.						
503 - 504.5	Fair dissem. cp. near slips.						
504.5 - 507.1	Negative Mineralization.						
507.1 - 508.6	10" massive ph., few nests cp..	6570	1.5			0.49	3.93
508.6 - 528	Fairly massive, few feldspar knots.						
528 - 550	Becoming fine grain, granitic injections, at 528, 530. (Dense, dark) negative min. grading to						

NOT TO BE USED FROM  
 THE OFFICE OF THE PRESIDENT  
 GEOLOGICAL SURVEY OF CANADA  
 SAULT STE. MARIE, ONT.

# DIAMOND DRILL RECORD

Sheet No. 3

PROPERTY EL PEN-REY OIL & MINES LIMITED HOLE NO. E-6 START .....

EAST BULL LAKE, TOWNSHIP 130

CLAIM NO. .... DEPTH BEARING DIP DEPTH BEARING DIP FINISH .....

LATITUDE ..... DEPTH .....

DEPARTURE ..... LOGGED L. S. Trenholme

ELEVATION ..... DRILL CO. Baderski

DEPTH FEET	FORMATION	SAMPLE NO.	SAMPLE LENGTH	OZ. GOLD	OZ. SILVER	% COPPER	% NI.
550 - 610	Speckled, scattered feldspar knots.						
610 - 635	<u>Syenite</u> Pink, felspathic with secondary quartz, some gabbro inclusions.						
635	END HOLE E-6.						

NOT TO BE REMOVED FROM  
 THE OFFICE OF THE ASSISTANT  
 GEOLOGIST, ONT. DEPT. OF MINES  
 SAULT STE. MARIE, ONT.

RECEIVED  
 OCT 10 1951

RECEIVED  
 EAST BULL LAKE

SPECIAL WORK

# DIAMOND DRILL RECORD

EL PEN-REY OIL & MINES LIMITED  
 PROPERTY EAST BULL LAKE, TOWNSHIP 130 HOLE NO. E-5 START \_\_\_\_\_  
 CLAIM NO. 95590 DEPTH BEARING DIP DEPTH BEARING DIP FINISH August, 1956.  
 LATITUDE 210 N Collar 900 op. - chalcopyrite DEPTH 460  
 DEPARTURE 2400 W ph. - pyrite LOGGED L. S. Trenholme  
 ELEVATION AXT DRILL CO. Baderski

DEPTH FEET	FORMATION	SAMPLE NO.	SAMPLE LENGHT	OZ. GOLD	OZ. SILVER	% COPPER
0 - 2.0	Casing.					
2.0 - 412.5	E.B. Gabbro.					
2.0 - 225	dark green - pale green mottling. Low biotite, low min. seams op. at 93, 152, 202,					
225 - 337	Coarser mottling, scattered grains op. 265 - 268 Medium biotite quartz, scattered op. 284.6 - 290					
337 - 408.0	Felspathic injections (knots & clusters). Scattered seams & patches ph. - op..					
408 - 412.5	Mainly aplite.					
412.5 - 444	F.G. Gabbro Schisted at 60°, scattered py., 40% pink aplite.					
444 - 460	Granite-Aplite Mixture, much green epidote few grains py.					
460	END HOLE E-5.  Core measurement 464'.					

NOT TO BE REMOVED FROM  
 THE OFFICE OF THE RESIDENT  
 GEOLOGIST, ONT. DEPT. OF MINES  
 5.4  
 460  
 ONT.

# DIAMOND DRILL RECORD

**PROPERTY** KL PEN-REY OIL & MINES LIMITED **HOLE NO.** E-4 **START** \_\_\_\_\_  
EAST BULL LAKE, TOWNSHIP 130  
**CLAIM NO.** 95590 **DEPTH** Collar **BEARING** - **DIP** 90° **FINISH** August, 1936.  
**LATITUDE** 665 N **DEPTH** 465  
**DEPARTURE** 1720 W **BEARING LEGEND:** op. - chalcopyrite **LOGGED** L. S. Trenholme  
py. - pyrite  
ph. - pyrrhotite **DRILL CO.** Baderaki  
**ELEVATION** \_\_\_\_\_

DEPTH FEET	FORMATION	SAMPLE NO.	SAMPLE LENGHT	OZ. GOLD	OZ. SILVER	% COPPER
0 - 2.5	Casing.					
2.5 - 110	Gabbro					
19.5 - 43	Crush Zone with injected syenite. Syenite also crushed.					
80.5	Few seams op..					
109 - 110	Strong shear C.A. 30°.					
110 - 216.5	Gabbro					
206 - 216.5	Quartz-feldspar blebs, 5% ph. - op.					Sample 211 - 216
216.5 - 222.5	Syenite					
222.5 - 258	Fine Gabbro (Diabase ?). Dark, speckled, massive.					
252.5 - 253.5	Mineralized inclusion, fair cp..					
258	Slip contact at 30°.					
258 - 283	E.B. Gabbro					
	Dark, chloritic, scattered ph. & cp. Contact 80°.					

GEOLOGICAL SURVEY OF CANADA  
 SAULT STE. MARIE, ONT.

GEOLOGICAL WORK



1936

# DIAMOND DRILL RECORD

Sheet No. 2

PROPERTY EL PEN-KEY OIL & MINES LIMITED  
EAST BULL LAKE, TOWNSHIP 130

HOLE NO. E-4

START .....

CLAIM NO. .... DEPTH BEARING DIP DEPTH BEARING DIP FINISH .....

LATITUDE ..... op. - chalcopyrite DEPTH .....

DEPARTURE ..... py. - pyrite LOGGED .....

ELEVATION ..... ph. - pyrrhotite DRILL CO. ....

DEPTH FEET	FORMATION	SAMPLE NO.	SAMPLE LENGTH	OZ. GOLD	OZ. SILVER	% COPPER
283 - 434	F.G. Gabbro (Diabase ?) Neg. Min., Dark massive, speckled.					
301 - 350	Pale feldspar knots.					
359	2" gabbro inclusion (round) good ph. & op.					
380.5	2" quartz & py. at 50°.					
381.5	1½" ph. nodule.					
394 - 396	Syenite injection.					
412.5- 417	Feldspar - epidote knots.					
417 - 434	Very fine grain.					
434 - 465	<u>Granite:</u> Pink granite with decreasing gabbro inclusion.					
465	END HOLE E-4.					
	Note: 465 Rod Measurement. 476 Core Measurement.					



# DIAMOND DRILL RECORD

**PROPERTY** KL PEN-REY OIL & MINES LIMITED **HOLE NO.** E-2 **START** July 22, 1956.  
EAST BULL LAKE, TOWNSHIP 130, Ont.  
**CLAIM NO.** 95590 **DEPTH** **BEARING** **DIP** **DEPTH** **BEARING** **DIP** **FINISH** July 28, 1956.  
**LATITUDE** Base plus 121 N **Collar** - **90°** **LEGEND:**  
**DEPARTURE** 1864 W **op.** - chalcopyrite **DEPTH** 501  
**ELEVATION** AXT. Core (in racks on property). **py.** - pyrite **LOGGED** L. S. Trenholme  
**DRILL CO.** Enderski  
**ph.** - pyrrhotite

DEPTH FEET	FORMATION	SAMPLE NO.	SAMPLE LENGHT	OZ. GOLD	% Ni.	% COPPER
0 - 2.0	Casing Core					
2.0 - 176.3	<u>Gabbro:</u> Altered (see start hole E-3). Plus white feldspathic segregations. Scattered fine ph. and cp.. Few seams cp.	4812	5.0		0.09	0.15 45 - 50
25 - 36	Mafic, more even grain, scattered clusters fine cp.	4813	5.0		0.14	0.40 55 - 60
36 - 63	White feldspar mottling as before. Fine cp. in fractures. 59 - 2" Qtz. heavy cp..	4814	5.0		0.08	0.11 125 - 130.
63 - 85.5	Dark "frogs egg" mottling. Sub-hedral hornblende.					
85.5 - 86.5	Shear & 1/2" mud seam at 5° - 20°.					
86.5 - 117	Chloritic - scattered nests ph. - cp..					
117 - 131	Same - 10% opalescent quartz. Fairly even dissem. cp. to					
131 - 150	Coarse, feldspathic, 10% quartz.					
150 - 176.3	Finer feldspar mottling, gradual increase blue quartz, scattered fine ph. - cp., increase py.. 2 - 3% sulphides.					

# DIAMOND DRILL RECORD

Sheet No. 2

**PROPERTY** EL PEN, KEY OIL & MINES LIMITED **HOLE No.** E-2 **START** \_\_\_\_\_  
EAST BULL LAKE, TOWNSHIP 130, Ont.

**CLAIM NO.** \_\_\_\_\_ **DEPTH** \_\_\_\_\_ **BEARING** \_\_\_\_\_ **DIP** \_\_\_\_\_ **FINISH** \_\_\_\_\_  
**LATITUDE** \_\_\_\_\_ **DEPTH** \_\_\_\_\_

**DEPARTURE** \_\_\_\_\_ **LOGGED** L. S. Trenholme

**ELEVATION** \_\_\_\_\_ **DRILL CO.** Baderski

**LEGEND**

op. - chalcopyrite  
 py. - pyrite  
 ph. - pyrrhotite

DEPTH FEET	FORMATION	SAMPLE NO.	SAMPLE LENGTH	OZ. GOLD	OZ. SILVER	% COPPER
176.3 - 179.5	Granite: White mottled quartz-feldspar rock. Disseminated fine py. - ph.					
179.5 - 202	Gabbro (?) Finer, green, actinolite - chlorite rock with few felsic injections, local fine ph. & cp..					
202 - 430.5	Intrusive Complex { Grey & pink felsite and aplitic dikes injected into schisted fine gabbro-patchy epidote alteration, few clusters py..					
227 - 300	50% syenite injections, 3" altered hornblende lamprophyre at 249.5. Few bunches py.. Odd grain of op. with quartz blebs.					
300 - 430.5	75% Pink Syenite.					
430.5 - 442.5	Andesite (?) Inclusion (?) dark dense rock similar hole E-3 at 218'. A little fine ph., op., py..					
442.5 - 501	Syenite 10% - 20% impurities.					
501	END HOLE E-2.					

NOT TO BE RELEASED FROM THE OFFICE OF THE ASSISTANT GEOLOGIST - ONT. DEPT. OF MINES GAITHER BARRIE, ONT.

ASSISTANT WORK

LIST

# DIAMOND DRILL RECORD

July 30, 1956.

PROPERTY EL PEN-REY OIL & MINES LIMITED HOLE NO. E-3 START \_\_\_\_\_  
EAST BULL LAKE, TOWNSHIP 190

CLAIM NO. 95590 DEPTH BEARING DIP DEPTH BEARING DIP FINISH \_\_\_\_\_  
Collar - 90° op. - chalcopyrite DEPTH 270  
 LATITUDE \_\_\_\_\_ py. - pyrite LOGGED L. S. Trenholme  
 DEPARTURE \_\_\_\_\_ ph. - pyrrhotite DRILL CO. Baderski  
 ELEVATION AXT Core (in racks on property).

DEPTH FEET	FORMATION	SAMPLE NO.	SAMPLE LENGTH	OZ. GOLD	OZ. SILVER	% COPPER
0 - 2.5	Casing. Altered gabbro.					
2.5 - 218	Gabbro Altered mottled, light green patches in dark brown matrix. Visible hornblende, plagioclase (twinning) minor quartz, biotite, chlorite (?) calcite (?).					
0 - 101.7	Scattered ph. - op. grains. Under 1% sulphides. Few blebs pale blue opalescent quartz. Alternate light & dark due local patchy segregation. Few grains magnetite. Opalescent quartz grains mainly occur in felspathic areas.					
101.7 - 103.2	Dioritic segregation layer. Top contact sharp at 65°. Bottom gradational.					
103.2 - 119	Variable colour & texture, fine disseminated op. - and few thin seams op., very little ph..	4810 4811	5.0 4.0	110-115 115-119	0.10 0.07	0.16 0.17
119 - 119.8	Dark fine grained layer with few grains op. C.A. 90°.					
119.8 - 167	Generally mafic: Sharp decrease op.. Scattered grains ph. - op..					
167 - 192	Dark even - grained variety opalescent quartz evenly distributed. Few specks op.. Few clusters ph..					

THE ONTARIO  
 GEOLOGIST, INT. DEPT. OF MINES  
 SAULT STE. MARIE, ONT.

% Ni.      % Cu.  
 0.10      0.16  
 0.07      0.17

# DIAMOND DRILL RECORD

Sheet No. 2

PROPERTY EL PEN-REY OIL & MINES LIMITED  
EAST BULL LAKE, TOWNSHIP 130

HOLE No. E-3

START .....

CLAIM NO. .... DEPTH BEARING DIP DEPTH READING DIP FINISH .....

LATITUDE ..... LOGGED: cp. - chalcopyrite DEPTH .....

DEPARTURE ..... py. - pyrite LOGGED .....

ELEVATION ..... ph. - pyrrhotite DRILL CO. ....

DEPTH FEET	FORMATION	SAMPLE NO.	SAMPLE LENGTH	OZ. GOLD	OZ. SILVER	% COPPER
192 - 203	Similar rock mottled with fresh quartz - feldspar, scattered op..					
203 - 218	Decreasing grain size, scattered coarse ph., low op.; white to pink aplitic injection starting at 209. Sharp fused contact at 65° with -					
218 - 238.7	Diabase (?) (Andesite ?) Very dark green dense chloritic rock, med. hardness, slight schisting, few grains py.. Hematite stain on fractures.					
222	2" pink syenite stringer.					
238.7 - 270	50% Irregular syenite injection. 242 Cave.					
270	END HOLE E-3.					

MINES  
 DEPARTMENT  
 GEOLOGICAL SURVEY OF CANADA  
 SAULT STE MARIE, ONT.  
 HOLE E-3  
 MARK

DUPLICATES

# DIAMOND DRILL RECORD

PROPERTY EL PEN-REY OIL & MINES LIMITED HOLE NO. E-1 START July 14, 1956.  
EAST BULL LAKE, TOWNSHIP 130  
 CLAIM NO. 95590 DEPTH BEARING DIP DEPTH BEARING DIP FINISH July 19, 1956.  
 LATITUDE 135 N Collar N 30 W 45° DEPTH 358  
 DEPARTURE 1375 W LOGGED L. S. Trenholme  
 ELEVATION Art. Core (in racks at Gutscher's Residence, Massey, Ontario) DRILL CO. Baderski & Son

DEPTH FEET	FORMATION	SAMPLE NO.	SAMPLE LENGHT	OZ. GOLD	OZ. SILVER	% COPPER
0 - 5.0	Casing.					
5.0 - 20.0	Syenite: 40% in altered gabbro.					
20.0 - 65.5	Gabbro: Green, slight schisting, blue quartz eyes, scattered pyrite, low porphyry and chalcopyrite. Blebs pink syenite.					
65.5 - 157	Diabase (?) Dark green, fine grain, massive, medium hardness, slight chlorite, few grains pyrite, hematite slips.					
	133 - 157 Shot with syenite dikes.					
157 - 291	Gabbro: With 30% syenite dikes.					
291 - 294	Lamprophyre: Or hornblende porphyry, dense black, hard, see Hole E-2 at 249.5. (Contacts 40°?).					
294 - 358	Syenite: 50 - 60% in gabbro.					
358	END - HOLE E-1.					

NOT TO BE REMOVED FROM  
 THE OFFICE OF THE RESIDENT  
 GEOLOGIST, ONT. DEPT. OF MINES  
 SAULT STE. MARIE, ONT.

# DIAMOND DRILL RECORD

**PROPERTY** EL PEN-REY OIL & MINES LIMITED **HOLE NO.** E-14 **START** October, 1956.  
EAST BULL LAKE, TOWNSHIP 130  
**CLAIM NO.** 95586 **DEPTH** **BEARING** **DIP** **DEPTH** **BEARING** **DIP** **FINISH** November, 1956.  
**LATITUDE** 2430 N **Collar** **-** **90°** **LEGEND**  
**DEPARTURE** 1200 W **op.** **-** Chalcopyrite **DEPTH** 496  
**ELEVATION** **py.** **-** Pyrite **LOGGED** J. Gutober  
**DRILL CO.** Baderski  
**ph.** **-** Pyrrhotite

DEPTH FEET	FORMATION	SAMPLE NO.	SAMPLE LENGHT	OZ. GOLD	OZ. SILVER	% COPPER
0 - 2.0'	Casing.					
2.0 - 36.0	Gabbro: With blobs of syenite.					
36 - 40	Syenite.					
40 - 75	Gabbro: With specks syenite.					
75 - 150	Gabbros: Altered & shot with syenite and fine grained cherty dark rock.					
150 - 400	Gabbro: Mottled with syenite (275-325) small quartz stringers.					
400 - 409	Diabase. Fine grain.					
409 - 457	Gabbro. Spotted with syenite.					
457 - 477	Diabase. Fine grain.					
477 - 491	Gabbro. 25% syenite.					
491 - 496	Diabase.					
496	END HOLE E-14.					

SABLE LAKE, ONT.

# DIAMOND DRILL RECORD

KL PEN-REY OIL & MINES LIMITED

E-9

START August, 1956.

PROPERTY \_\_\_\_\_

TOWNSHIP 130 \_\_\_\_\_

HOLE NO. \_\_\_\_\_

START \_\_\_\_\_

CLAIM NO. 95589 \_\_\_\_\_

DEPTH BEARING DIP \_\_\_\_\_

DEPTH BEARING DIP \_\_\_\_\_

FINISH September, 1956.

LATITUDE 1360 N \_\_\_\_\_

Collar S 30 E 55° \_\_\_\_\_

op. - Chalcopyrite \_\_\_\_\_

DEPTH 715 \_\_\_\_\_

DEPARTURE 2000 V \_\_\_\_\_

300 - 52° \_\_\_\_\_

py. - Pyrite \_\_\_\_\_

LOGGED L. S. Trenholme \_\_\_\_\_

ELEVATION 5002.25 \_\_\_\_\_

650 - 52° \_\_\_\_\_

ph. - Pyrrhotite \_\_\_\_\_

DRILL CO. Baderski \_\_\_\_\_

DEPTH FEET	FORMATION	SAMPLE NO.	SAMPLE LENGTH	OZ. GOLD	OZ. SILVER	% COPPER
0 - 5.0	Casing.					
5.0 - 328	E.B. Gabbro Coarse patches white feld. Small patches op. 198, 204, 205.5, 230 - 275 Scattered grains ph. & cp. (sparse). Very few quartz eyes. 275 - 295 Increase quartz eyes and ph. - cp. (1% - sulphides). 295 - 328 Few grains ph. - cp., 5% blue qtz. eyes.					
328 - 451.5	Syenite Felsic injection variety with 40% inclusions, of f.g. gabbro. Much epidote alt.					
451.5 - 618.5	Gabbro (diabase ?) Very dark with white speckling, massive, neg. min. 475 Becoming slightly coarser & visibly ophitic. 560 Decrease grain size to dense at 617.					
618.5 - 715	Intrusive Complex: Brownish K-S gabbro (?) spotted & shot with syenite. 710 - 715 Altered andesite (?).					
715	END HOLE E-9.					

NOT TO BE REMOVED FROM  
 THE OFFICE OF THE ASSISTANT  
 GEOLOGIST, ONT. DEPT. OF MINES  
 SAULT STE. MARIE, ONT.  
 ASSOCIATED WORK

RECEIVED  
 ASSISTANT GEOLOGIST  
 ONT. DEPT. OF MINES  
 SAULT STE. MARIE, ONT.

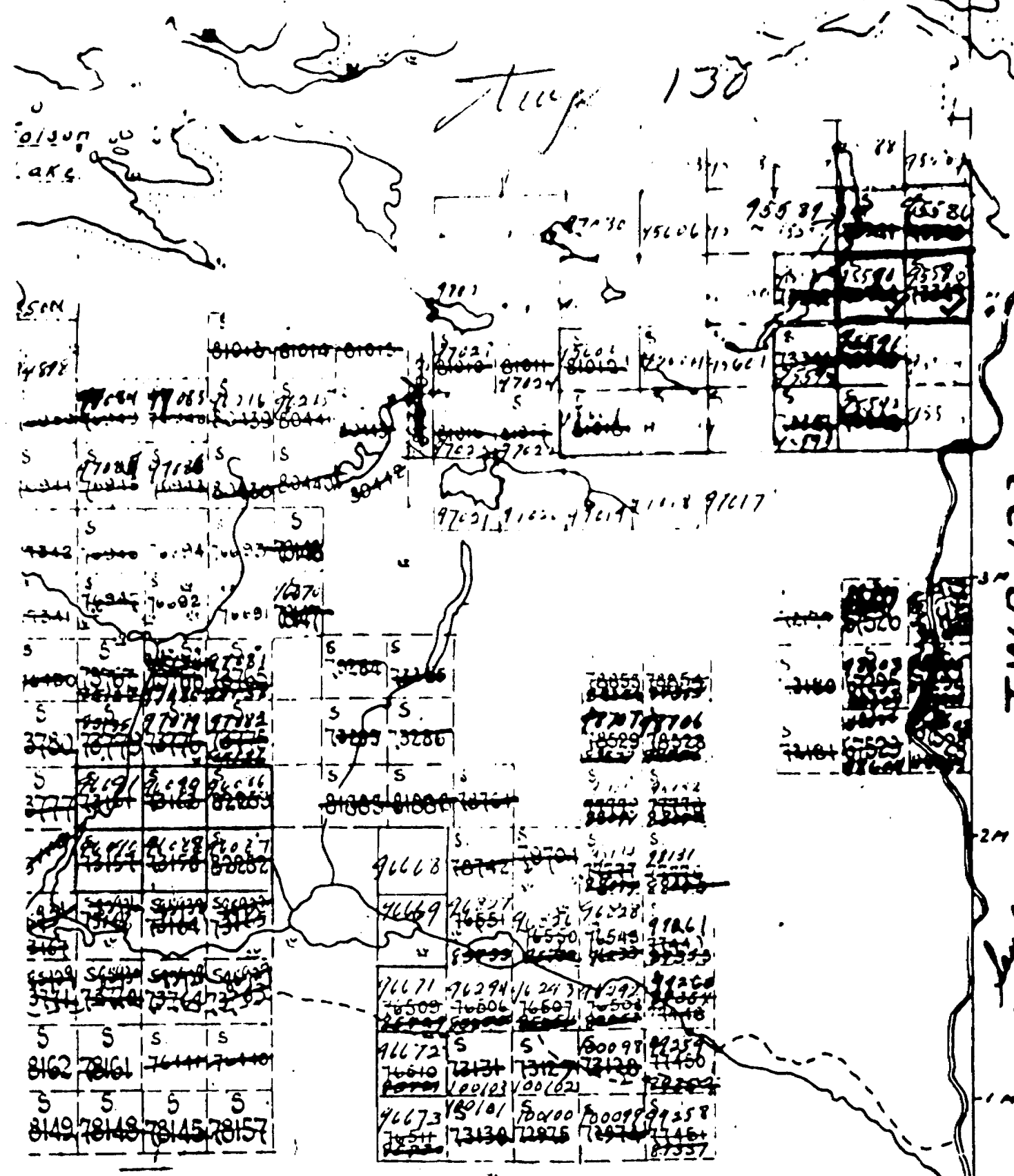
TWP 131

# GEROW TWP

SCALE: 1" = 40 CA.

S-14-395

Twp 130



TWP 123

Handwritten notes and scribbles at the bottom right corner of the map area.

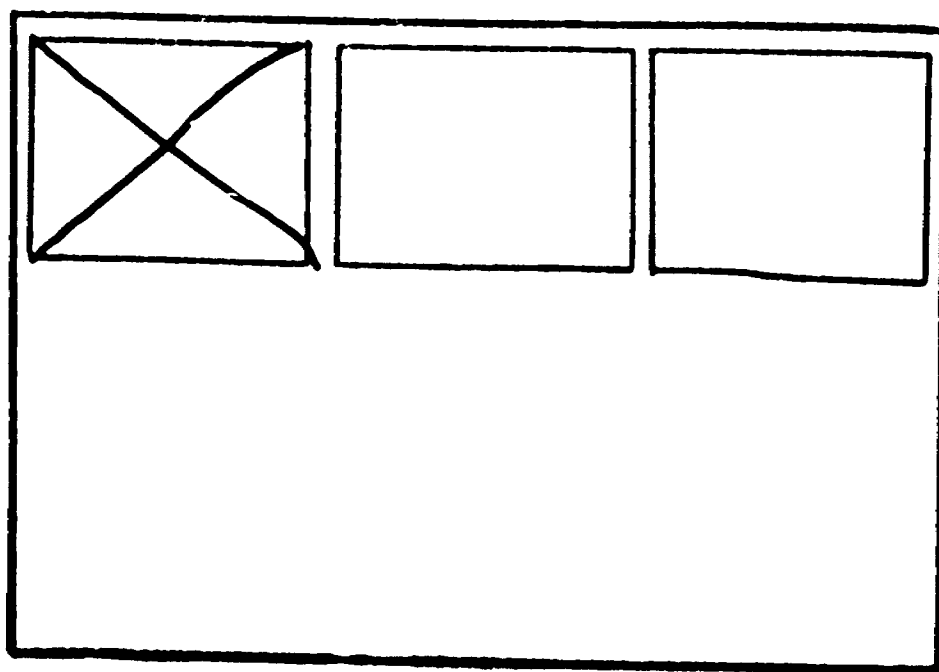


SEE ACCOMPANYING  
MAP(S) IDENTIFIED AS  
GEROW-0010-#1

---

---

LOCATED IN THE MAP  
CHANNEL IN THE FOLLOWING  
SEQUENCE (X)



J.D.M.

SUDBURY MINING DIVISION

EL PEN-REY OIL & MINES  
EAST BULL LAKE  
TWP. 130

PLAN SHOWING D.D. HOLES

Scale 1" = 200'

Nov. 28/56

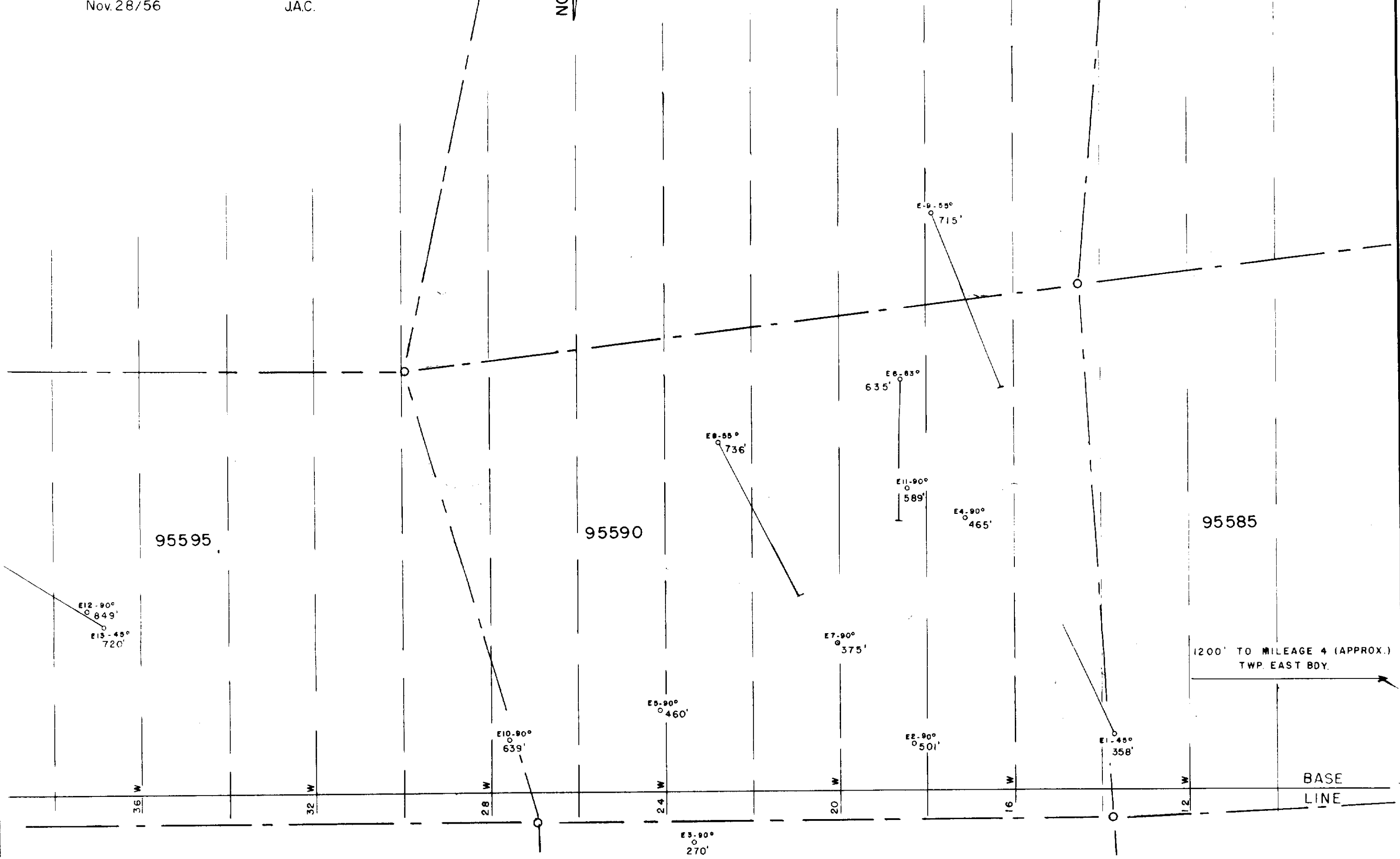
J.A.C.



CLAIM 95589

95586

E14-90°  
496'



95595

95590

95585

1200' TO MILEAGE 4 (APPROX.)  
TWP EAST BDY.

BASE  
LINE



41J08NE0018 0010 GEROW

4

95591

95584

200

GEROW-0010-#1