

Diamond Drilling



010

Township of HARROW

Report No: 12

Work performed by: J. GUTCHER

Claim No	Hole No	Footage	Date	Note
S 69941	4	107.9'	Sept/54	
S 69949 (69948)	3	98'	Aug/54	
S 69945 (69946)	2	100.5'	July/54	
S 69944 (69947)	1	124.8'	July/54	

TOTAL: 4 DH. 431.2 FT

Notes:

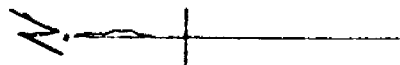
Core Log No 4 Hole angle 60's
Dept 107.9 Core S. 69941

{ casing 2' 0-25'
23' quartzite
25-50'

25' quartzite
50'-75'

25' quartzite
75-107.9'

{ 32.9' quartzite Hole abandoned
owing to casing



CASING COLLAR
CASING COLLAR

GROUND LEVEL
GROUND LEVEL

TRAIL TO LK
TRAIL TO LK

569941

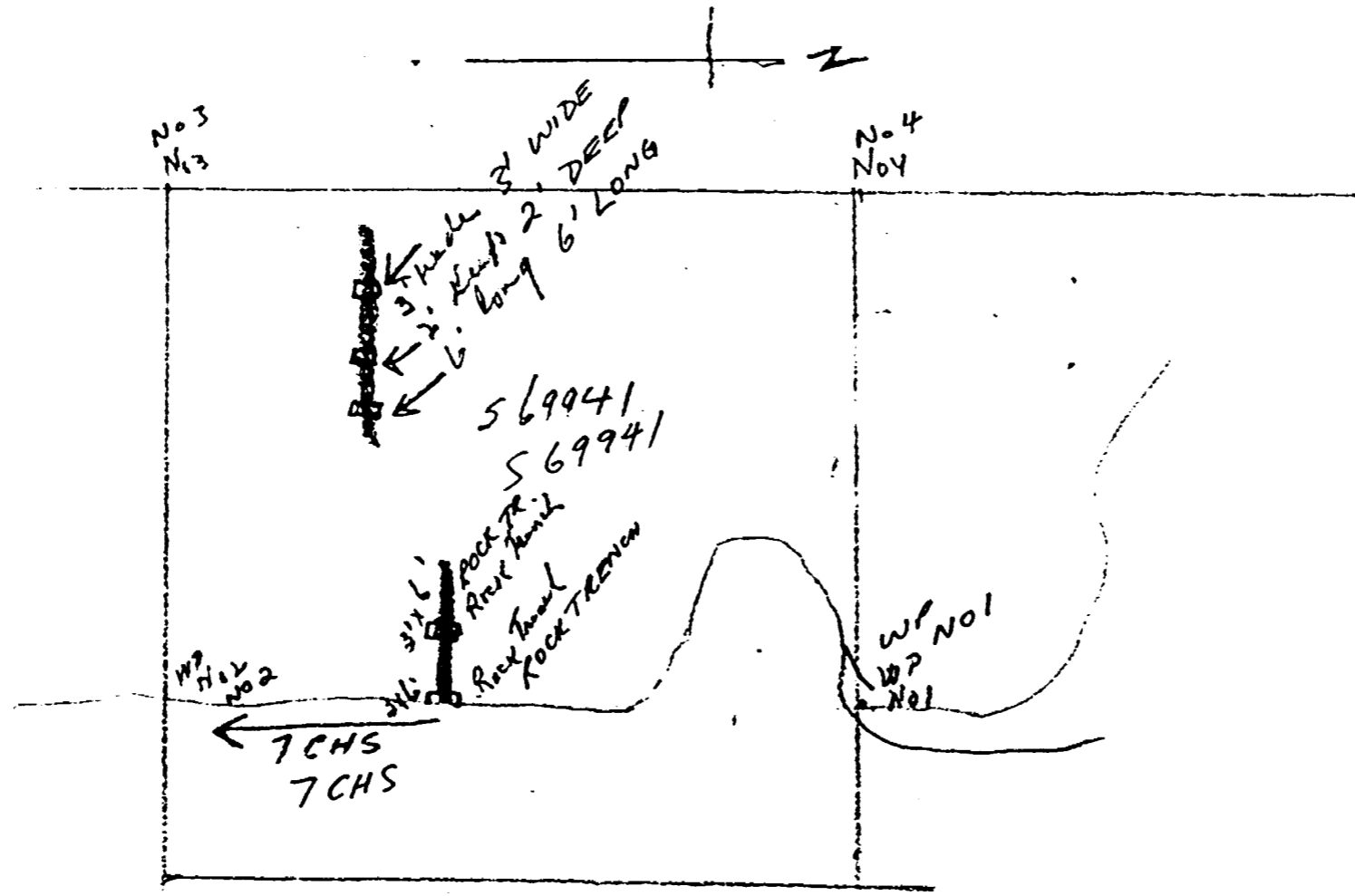
ASSUMED DIP 90°
ASSUMED DIP 90°

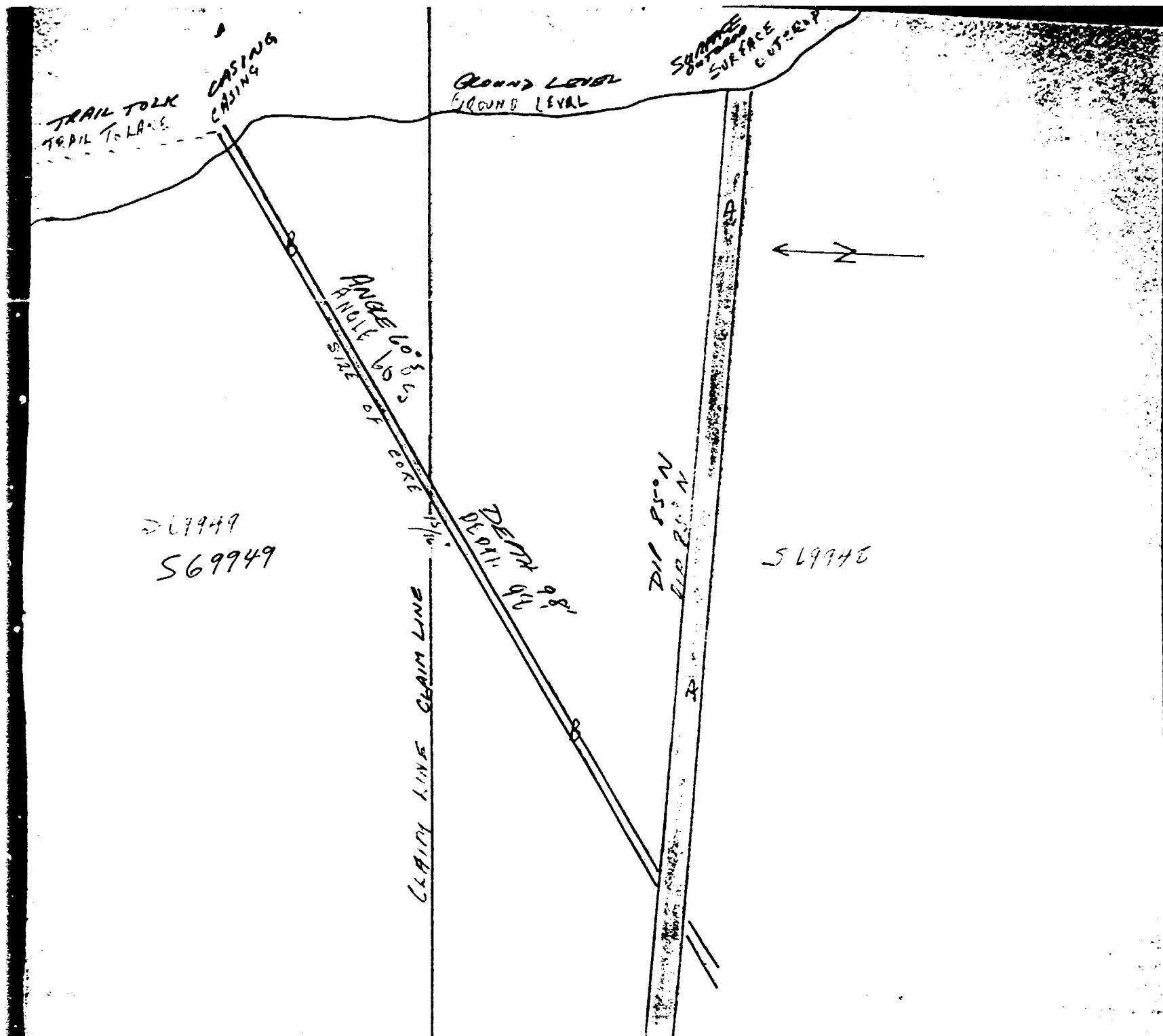
LEGEND: A: RADIOACTIVE DYKE
B: QUARTZITE

SCALE: 1" = 10 FT

SKETCH PLAN
OF
DRILL HOLE 107-9
GUTHER-VANCE STAKE

HOLE ABANDONED
107-9'
DUE TO
CAVING
HOLE ABANDONED
107-9'
DUE TO
CAVING





SKETCH PLAN
 OF
 DRILL HOLE NO 3 DH NO. 3
 GOTCHER YANCE STAKINGS
 HARROW T.P.
 SCALE 1 INCH = 10 FEET

EXPLANATION 1"=10'

A MINERALIZED DYKES
 B QUARTZITE

Core log No 3 Hole

Angle 60° S

Depth 98'

Plano 569948-49

0 - 25'

4' casing 21' quartzite

25 - 50'

25' feet quartzite

50' - 75'

25' feet quartzite

75' - 98'

12' 11" quartzite 4.5" Radis actone
zone (sampled) 5' 8" quartzite

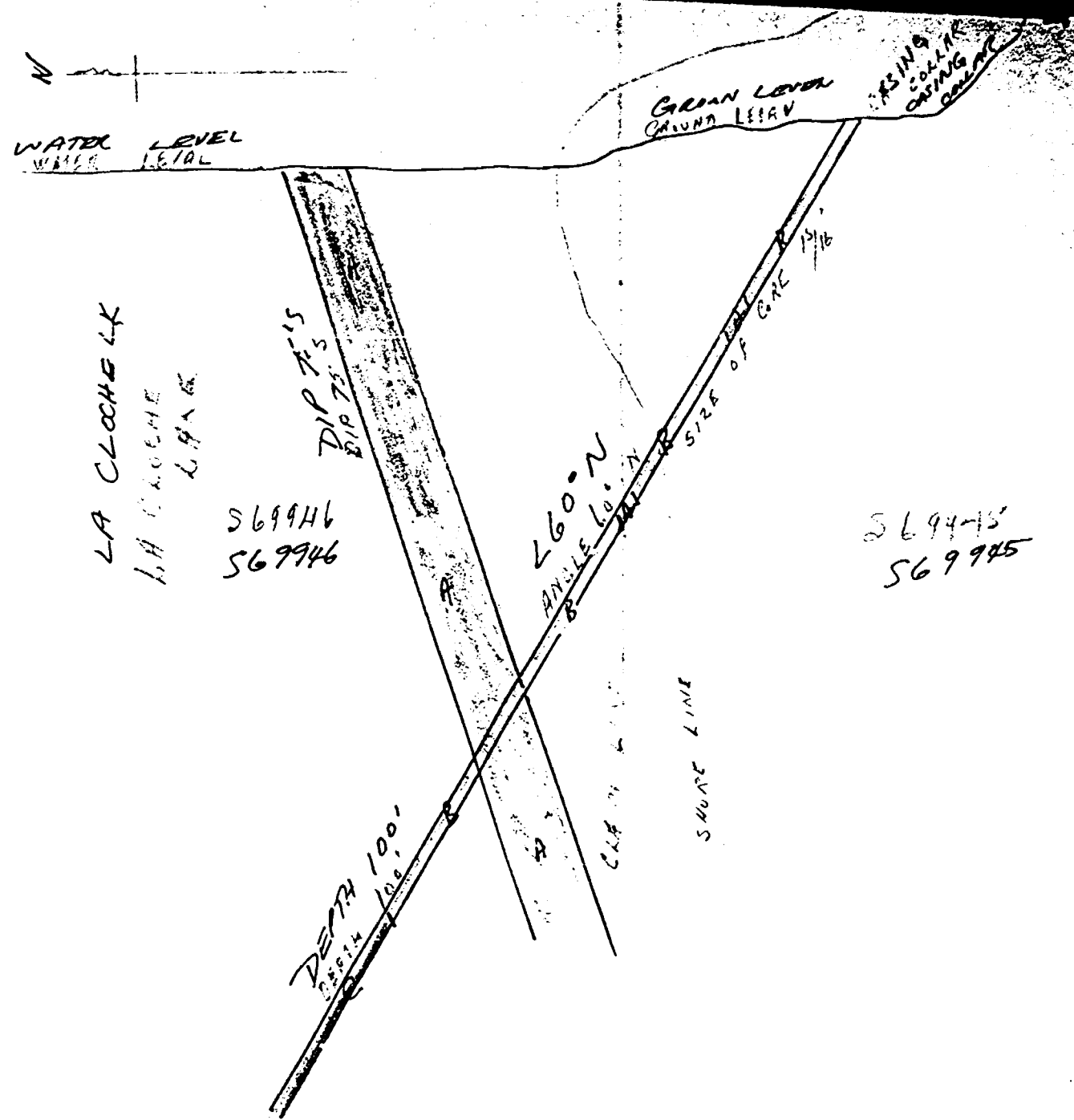
Core log No 2 Hole
Angle 60° N Depth 100.5' Classno S 69945-46
0 - 25'

{ 2' casing 19 feet quartzite
4 feet mineralized quartzite sampled

25' - 50'
15' feet quartzite 41" mineralized
quartzite sampled 6.7" quartzite




50' - 75'
6' 2" quartzite 8' 9" Radio active zone
sampled 10' - 1" quartzite

75' - 100.5"
14' 4" quartzite 10' 8" conglomerate
5" impure quartzite



SKETCH PLAN
 OF
 DRILL HOLE NO. 2 D.H. NO. 2
 GUYONER BRIDGE STAKING
 HARRON TP
 SCALE 1 INCH = 10 FEET

EXPLANATION 1"=10'

MINERALIZED DYKES		A
QUARTZITE		B
CONGLOMERATE		C

Core log Hole No 1

Angle 60° N depth 124.8 Plains No

S. 69944 . S. 69947

0 - 25'

2 feet casing 17 feet quartzite 3' 8"
Nonunalized quartzite sampled 2' 4"
quartzite

25' - 50'

5' 7" quartzite 5' 9" Impure quartzite
or Gneiss 13' 8" quartzite

50' - 75'

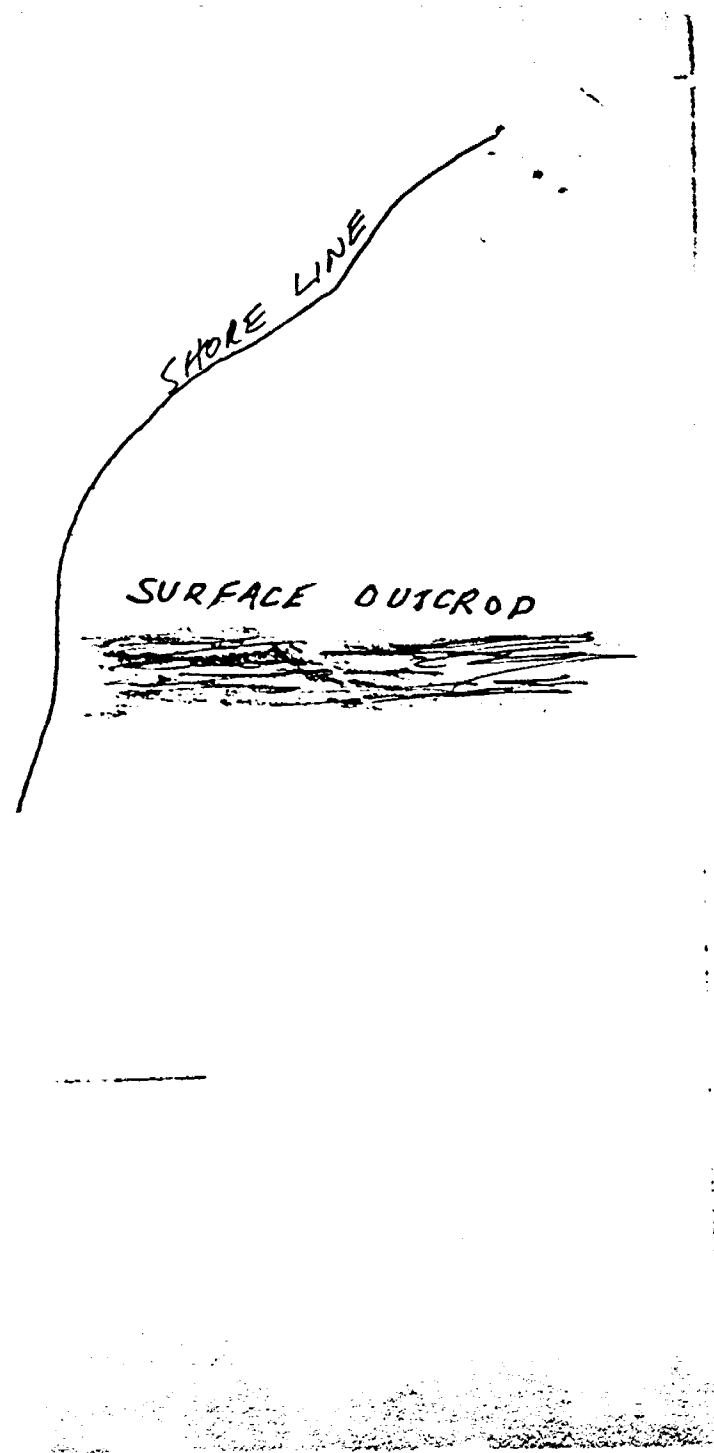
25 feet quartzite

75' - 100'
25 feet quartzite

100' - 124.8'

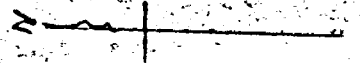
8' 4" Radio active Dyke sampled

15' - 8" Impure quartzite



2/2

1/2



WATER LEVEL
WATER LEVEL

GROUND LEVEL
GROUND LEVEL

CASING
CASING

SHORE LINE

CLAIM NO
5.69947
5.69947
LA CLOACHE
LA CLOACHE
LA CLOACHE
LA CLOACHE

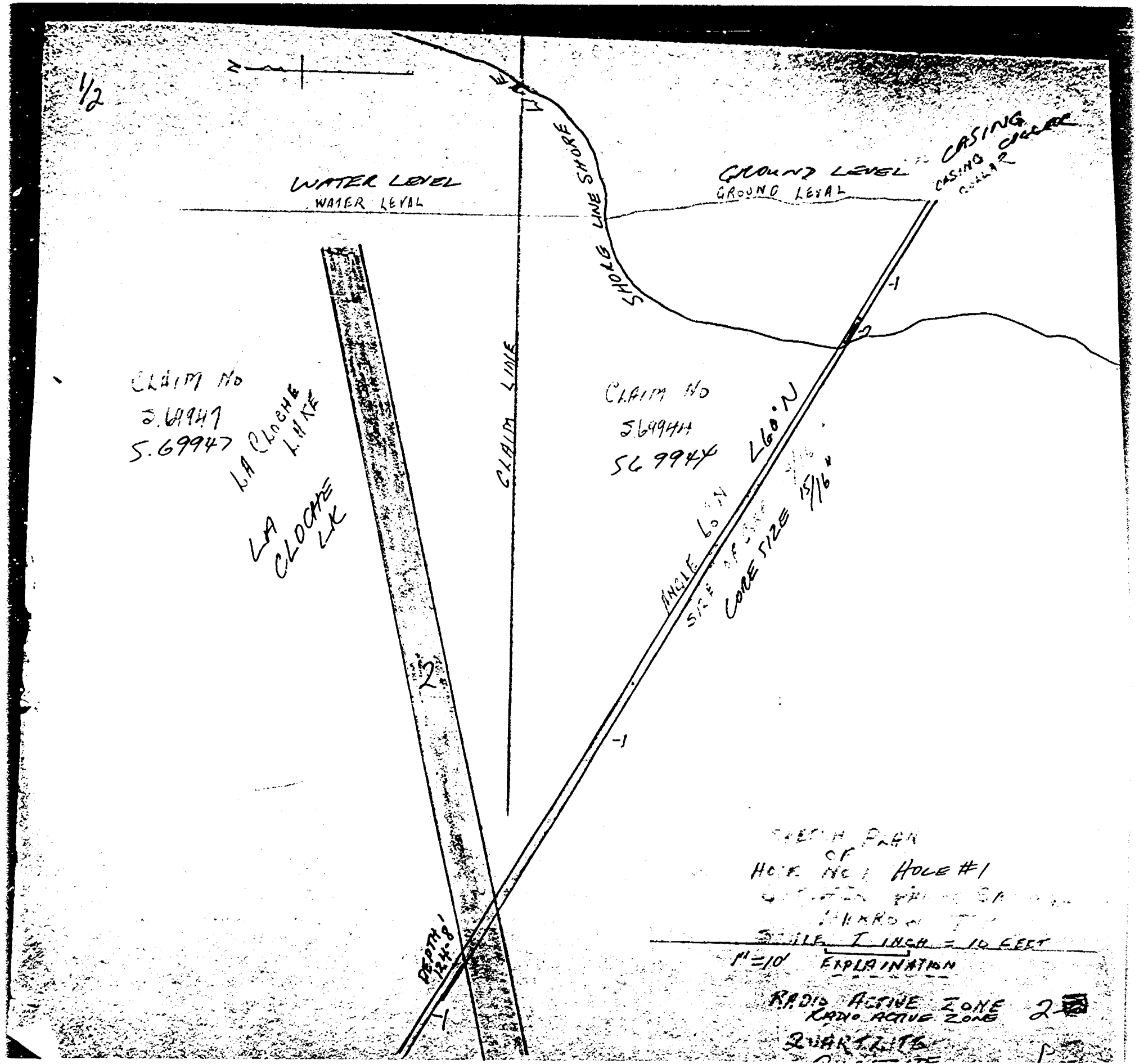
CLAIM NO
569944
569944
ANGLE 60°N
STEP OF CORE
CORE SIZE 1 5/16"

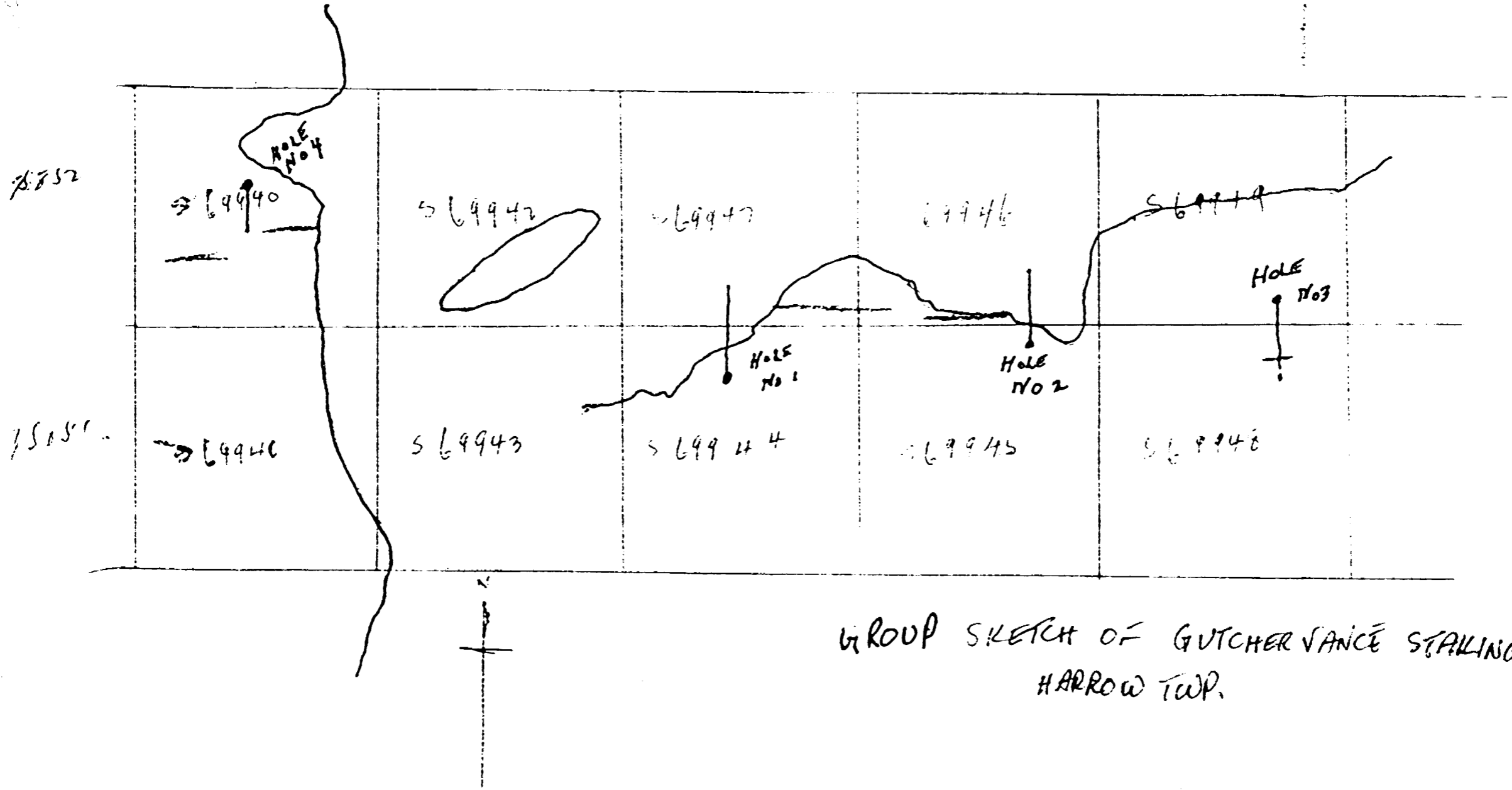
CLAIM LINE

DEPTH
124'-8"

SHEET PLAN
OF
HOLE NO. 1 HOLE #1
LOCATION MAP OF
MADRID
SCALE 1 INCH = 10 FEET

EXPLANATION
RADIO ACTIVE ZONE 2
RADIO ACTIVE ZONE
QUARTZITE





GROUP SKETCH OF GUTCHER VANCE STALLINGS
HARROW TWP.



41J08SE0109 0010B1 HARROW

OFFICE OF MINING RECORDS



ONTARIO
DEPARTMENT OF MINES

900
SUDBURY MINING DIVISION
SUDBURY, ONTARIO



October 8, 1954.

Dr. M. E. Hurst,
Provincial Geologist,
Ont. Dept. of Mines,
Parliament Buildings,
TORONTO, Ontario.

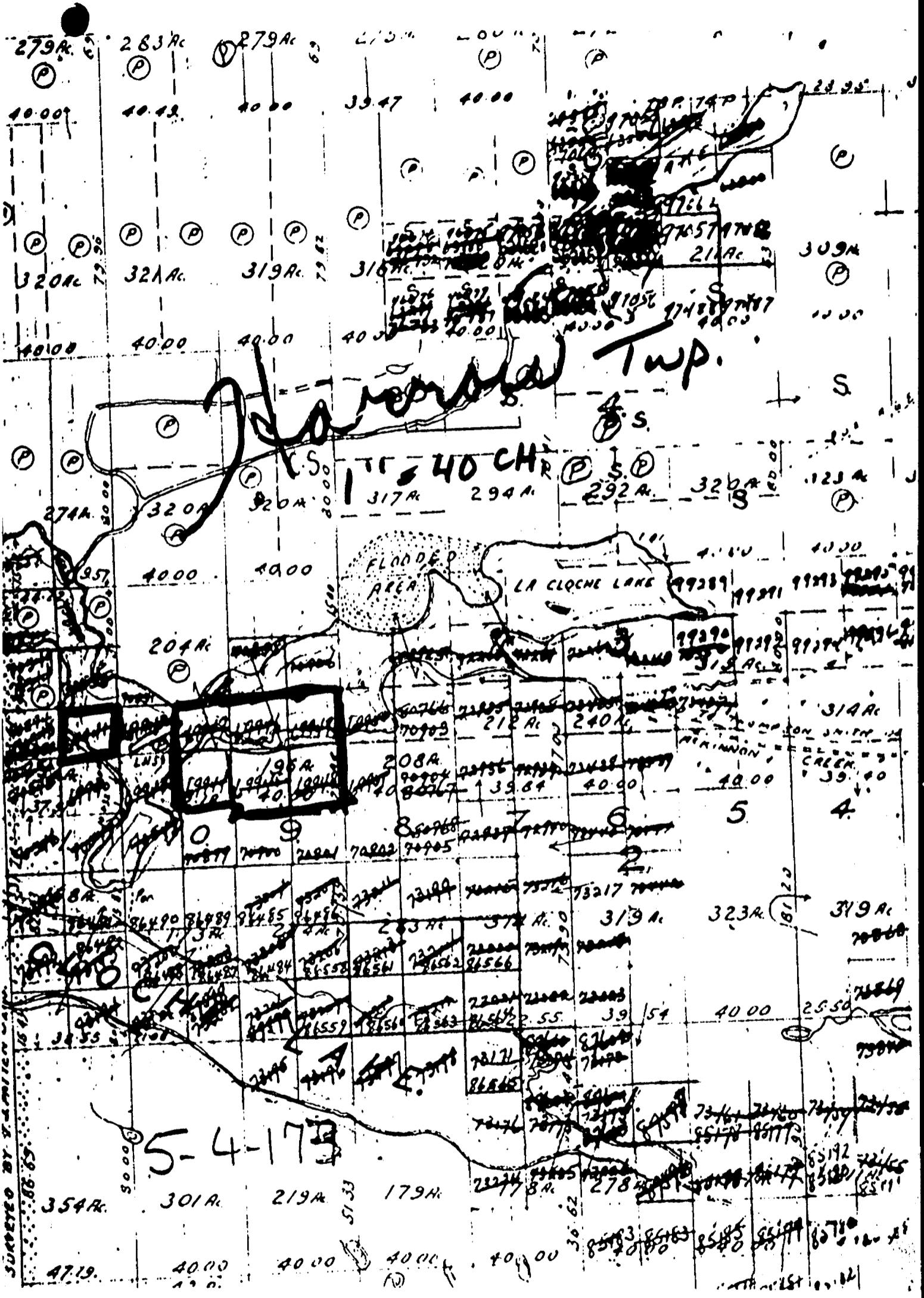
Dear Sir:-

Enclosed please find logs of diamond
drilling etc., submitted by Mr. Jack Gutcher, Box
15, Massey, Ontario, on mining claims in Harrow town-
ship.

Yours very truly,


J. R. McGinn,
Mining Recorder.

JRM:GA
Encls.



279A. (P)

283A. (P)

279A. (P)

40.00

40.00

40.00

40.42

40.00

39.47

40.00

320A. (P)

321A. (P)

319A. (P)

318A. (P)

211A. (P)

309A. (P)

40.00

40.00

40.00

40.00

40.00

40.00

Harvard Twp.

274A. (P)

320A. (P)

320A. (P)

317A. (P)

294A. (P)

292A. (P)

320A. (P)

123A. (P)

40.00

40.00

40.00

40.00

40.00

40.00

204A. (P)

204A. (P)

204A. (P)

204A. (P)

204A. (P)

204A. (P)

204A. (P)

204A. (P)

195A. (P)

195A. (P)

195A. (P)

195A. (P)

195A. (P)

195A. (P)

195A. (P)

195A. (P)

208A. (P)

208A. (P)

208A. (P)

208A. (P)

208A. (P)

208A. (P)

208A. (P)

208A. (P)

314A. (P)

314A. (P)

314A. (P)

314A. (P)

314A. (P)

314A. (P)

314A. (P)

314A. (P)

319A. (P)

319A. (P)

319A. (P)

319A. (P)

319A. (P)

319A. (P)

319A. (P)

319A. (P)

323A. (P)

323A. (P)

323A. (P)

323A. (P)

323A. (P)

323A. (P)

323A. (P)

323A. (P)

319A. (P)

319A. (P)

319A. (P)

319A. (P)

319A. (P)

319A. (P)

319A. (P)

319A. (P)

354A. (P)

354A. (P)

354A. (P)

354A. (P)

354A. (P)

354A. (P)

354A. (P)

354A. (P)

4719.

40.00

40.00

40.00

40.00

40.00

40.00

40.00

5-4-173

SURVEYED BY T. SMITH

4719.

40.00

40.00

40.00

40.00

40.00

40.00

40.00

40.00

40.00

40.00

40.00

40.00

40.00

40.00

40.00

40.00

40.00

40.00

40.00

40.00

40.00

40.00

40.00