



41N02SE0023 0014 NICOLET

010

Diamond Drilling

Township of NICOLET
(Former Twp. 28 R.13)

Report No: 10

Work performed by: Sylvanite Gold Mines

Claim No	Hole No	Footage	Date	Note
SSM 35136	1	372'	Jan/55	
	6	488'	Mar/55	
	7	473'	Apr/55	
	9	459'	Apr/55	
	11	551'	June/55	
	12	369'	July/55	
	13	350'	July/55	
	15	275'	July/55	
	16	358'	July/55	
	17	250'	July/55	
	20	211'	Aug/55	
	20-A	625'	Sept/55	
SSM 35137	2	175'	Feb/55	
	3	185'	Apr/55	
	4	178'	Apr/55	
	5	432'	Feb/55	
	8	460'	Apr/55	
	10	480'	June/55	
	19	300'	July/55	
	18	250'	July/55	
	21	637.5'	Sept/55	
	22	675'	Sept/55	
	SSM 35128	<u>14</u>	<u>lost</u>	July/55
<i>TOTAL</i>		<i>23 DH</i>	<i>8553.5 FT</i>	

Notes:

SYLVANITE GOLD MINES LIMITED
(NO PERSONAL LIABILITY)

TYPED BY AT

DATE March 22nd, 1955

PROPERTY Breton

HOLE NO. 1 "B" CORE

LOCATION Claim 35139 3936
 PURPOSE
 DRILLED BY Heath & Sherwood
 LOGGED BY W. D. Stroud
 DATE STARTED
 DATE FINISHED Date Logged - January 31st, 1955
 CORE RECOVERY

BEARING N. 44° W.
 DIP 45°
 CO-ORDINATES - N. 285' S. #135137
 E 5' E. #135137 W.
 ELEV.
 DIP TESTS
 BEARING TESTS

FOOTAGE	SAMPLE NO.	VALUE DWIS.	WIDTH	AV.	ROCK
0.0					
15.0					Casing
25.0					Granite and greenstone bands up to 4' long with one or two very small splashes of chalcopyrite.
32.5					do
50.0					do but with quartz replacement up to 12" V.S.M.
60.0					do
61.0					Ground core.
62.2					Granite.
63.0					Ground core.
76.0					Granite and quartz.
77.5					Ground core.
88.3					Granite and quartz, last 6" quartz.
89.3					Ground core.
90.0					Granite and quartz, last 4" quartz with quite massive chalcopyrite and a little malachite.
90.7					Ground core.
92.0					Greenstone?
93.2					Ground core.
98.0					75% quartz, N.M.
101.5					Greenstone? and quartz.
103.5					Granite.
108.0					Greenstone? and quartz, N.M.
109.2					Ground core.
118.0					Greenstone? not much quartz N.M., strong slips @ 10° ±
119.5					Ground core.
136.0					Greenstone. Lost core 128 - 128.7, 130.2 - 131.0, 132.0 - 133.5.
158.5					Granite, core missing 138.0 - 138.7, 141.5 - 142.5, 144.1 - 145.0, 154.2 - 155.0, 10% quartz and a little crystalline pyrite in the quartz.
175.0					Greenstone? 168.0 - 169.5 gabbro? Core missing 159.2 - 160.0, 163.0 - 163.8, 167.0 - 168.3, 169.0 - 170.0, 171.5 - 172.8, 174.4 - Some quartz, a little pyrite mineralization.
207.5					75% quartz with greenstone, a few small splotches of pyrite. Core lost 181.5 - 182.2, 184.0 - 185.0, 186.2 - 187.5, 188.2 - 189.2, 189.3 - 190.0, 192.0 - 192.7, 194.3 - 195.0, 196.3 - 197.5, 197.9 - 199.1.
210.0					Granite or porphyry.
213.5					Greenstone.
215.0					Silicified rock and quartz with mineralization (sample).
215.7					Gabbro?
217.5					Leached gabbro, a little mineralization (sample).
219.0					Mostly quartz, some chalcopyrite (sample).
222.5					F.G. dark.
224.0					40% quartz, a little chalcopyrite (sample).
250.0					Breccia, various rocks, N.M. Core lost 229.4 - 230.0, 231.5 - 232.8, 235.6 - 236.6, 238.9 - 239.2, 240.8 - 242.3, 244.0 - 244.6.
275.0					Quartz breccia. Core lost 251.0 - 252.3, 257.5 - 258.3, 262.1 - 262.5, 272.5 - 273.4. A few splashes of chalcopyrite.
300.0					Quartz breccia, a few specks of sulphide. Lost core 284.0 - 285.0, 286.4 - 288.5, 291.2 - 292.2, 295.8 - 296.5, 298.8 - 300.0.
325.0					do Lost core 309.0 - 310.0.

NOT TO BE REMOVED FROM
 THE OFFICE OF THE RESIDENT
 GEOLOGIST, ONT. DEPT. OF MINES
 SAULT STE. MARIE, ONT.

S SM-1592

SYLVANITE GOLD MINES LIMITED

(NO PERSONAL LIABILITY)

PAGE NO. 2

HOLE NO. 1

TYPED BY AT

DATE March 22nd, 1955

PROPERTY Breton

FOOTAGE	SAMPLE NO.	VALUE DWTS.	WIDTH	AV.	ROCK
350.0					Quartz, breccia, a few specks of sulphide. Lost core 333.0 - 333.7, 335.0 - 336.3, 337.6 - 378.8, 341.5 - 342.8, 344.7 - 345.0, 347.2 - 348.2, 348.9 - 349.2.
367.0					Quartz breccia.
372.0					Granite.
					372.0 End of Hole
					No samples taken.
					Sludges
					280.0 - 290.0 - 12.03%
					290.0 - 300.0 - 3.2
					300.0 - 310.0 - 3.8
					310.0 - 320.0 - 5.21
					330.0 - 340.0 - 3.2

NOT TO BE REMOVED FROM
THE OFFICE OF THE RESIDENT
GEOLOGIST, ONT. DEPT. OF MINES
SAULT STE. MARIE, ONT.

S 6M-1599

SYLVANITE GOLD MINES LIMITED

(NO PERSONAL LIABILITY)

TYPED BY AT

DATE March 16th, 1955.

PROPERTY Breton

HOLE NO. 6

LOCATION Claim 35136
 PURPOSE
 DRILLED BY Heath & Sherwood
 LOGGED BY F. D. Stroud
 DATE STARTED
 DATE FINISHED Date logged - March 11, 1955
 CORE RECOVERY

BEARING N. 44° W.
 DIP 45°
 CO-ORDINATES - N. 220' #1 35137
 E. 75' #1 35137 W.
 ELEV.
 DIP TESTS
 BEARING TESTS

FOOTAGE	SAMPLE NO.	VALUE DWT. Cu.	WIDTH	AV.	ROCK
0.0					Casing.
25.0					Porphyry, fresh.
37.5					Porphyry and greenstone in bands, contacts appear to be @ 30° - 45°.
50.0					Porphyry, fresh, 60 - 70 poor core with considerable wood.
71.0					Porphyry, altered and half ground, 71.5 - 74.0 chloritized.
74.0					Breccia.
75.0					Porphyry, 24" missing.
85.0					Mostly greenstone, 12" missing, 5% quartz.
90.0					Mostly porphyry, some chalcocopyrite.
95.0	183134	0.17	5.0		Porphyry, fresh.
99.5					Porphyry, leached, considerable chalcocopyrite.
100.5	183135	0.22	5.0		Porphyry with some breccia, fresh porphyry.
120.7					Breccia with chalcocopyrite.
126.7	183136	2.83	6.0		Porphyry
130.0					Breccia. A little galena in places.
135.0	183137	0.21	5.0		Breccia.
140.0	183138	0.07	5.0		Porphyry with a little quartz and a few specks of chalcocopyrite.
164.7					Breccia, 15% quartz.
170.0	183139	0.40	5.3		Breccia, 20% quartz.
175.0	183140	0.10	5.0		Breccia. Rock is greenstone, core is badly ground, probably 60% lost.
180.0	183141	0.68	5.0		Breccia. Bad core, only about 1 1/2' in round core, balance 70% ground.
185.0	183142	0.12	5.0		Breccia, but only about 15% quartz, 60% recovery.
200.0					Porphyry, some breccia.
221.0					Breccia, some chalcocopyrite.
226.0	183143	0.40	5.0		Porphyry, no mineralization.
234.0					Breccia, a little chalcocopyrite.
236.0	183144	0.23	2.0		Porphyry.
238.8					Breccia.
245.0	183145	0.09	6.2		Breccia.
250.0	183146	0.13	5.0		Breccia.
251.5	183147	0.15	1.5		Breccia.
275.0					Porphyry, mostly, but some quartz.
280.0	183182	0.08	5.0		Breccia, 10% quartz.
286.0	183183	0.22	6.0		Breccia, 10% quartz, mostly greenstone.
295.0					Porphyry, massive.
300.0	183148	0.19	5.0		Breccia.
305.0	183149	0.19	5.0		Breccia, 15% quartz, at 308' 12" leached.
310.0	183150	0.31	5.0		Breccia, 10% quartz.
315.0	183152	0.46	5.0		Breccia, 40% quartz.
320.0	183153	0.60	5.0		Mostly porphyry, 5% quartz, 35% greenstone.
325.0	183154	0.08	5.0		Breccia, 30% quartz, 30% porphyry, 30% greenstone, a little calcite.
330.0	183155	0.35	5.0		Breccia, 5% quartz, greenstone, a little calcite chalcocopyrite.
335.0	183156	0.08	5.0		Greenstone, except for 10% porphyry.
340.0	183157	0.06	5.0		Greenstone, except for 10% porphyry.
345.0	183158	0.39	5.0		Breccia, 15% quartz, mostly greenstone, some chalcocopyrite.
350.0	183159	0.39	5.0		Breccia, 50% quartz, 35% porphyry, 15% quartz, last foot leached.
355.0	183160	0.14	5.0		Breccia, 75% quartz, some chalcocopyrite.

NOT TO BE REMOVED FROM
 THE OFFICE OF THE RESIDENT
 GEOLOGIST, ONT. DEPT. OF MINES
 BAULT STE. MARIE, ONT.

S SM-1592

SYLVANITE GOLD MINES LIMITED
(NO PERSONAL LIABILITY)

PAGE NO. 2

TYPED BY AT

DATE March 22nd, 1955

PROPERTY Breton

HOLE NO. 6

FOOTAGE	SAMPLE NO.	VALUE DWTS.	WIDTH	AV.	ROCK
361.0	183161	0.47	5.0	37.5 @ 2.4%	Breccia, 50% quartz, some chalcopyrite.
366.8	183162	0.34	5.8		Breccia, 50% quartz, chalcopyrite in two splashes.
371.8	183163	0.05	5.0		Greenstone, barren.
377.5	183151	14.47	5.7		Heavy chalcopyrite, quartz and greenstone.
382.5	183164	0.04	5.0		Breccia, quartz and silicified porphyry.
387.5	183165	0.09	5.0		Porphyry.
392.5	183166	0.50	5.0		Breccia, several blobs of chalcopyrite. 191.0 - 192.0 leached.
400.0	183167	0.07	7.5		Breccia, 30% quartz.
405.0	183168	0.19	5.0		Breccia, 10% quartz.
410.0	183169	0.25	5.0		Breccia, 20% quartz.
415.0	183170	0.15	5.0	Breccia, 20% quartz, mostly porphyry, 12" ground core.	
420.0	183171	0.09	5.0	Breccia, 10% quartz, 419.0 - 420.0 chlorite greenstone slightly leached, remainder porphyry.	
425.0	183172	0.51	5.0	Breccia, 20% quartz, some chalcopyrite.	
430.0	183173	0.04	5.0	Breccia, 25% quartz.	
435.0	183174	0.26	5.0	Breccia, some chalcopyrite.	
440.0	183175	1.22	5.0	Breccia, 25% quartz. Most of the chalcopyrite is in a quartz stringer @ 15° to core.	
445.0	183176	0.11	5.0	Breccia, 40% quartz.	
450.0	183177	0.08	5.0	Porphyry, mostly, very slight chalcopyrite.	
455.0	183178	0.74	5.0	Breccia, some heavy chalcopyrite.	
460.0	183179	0.41	5.0	Breccia, 50% quartz.	
462.5	183180	0.10	2.5	24" greenstone, 36" porphyry, a little chalcopyrite in the greenstone.	
467.5				Porphyry, massive.	
475.0	183181	0.28	7.5	Breccia.	
488.0				Mostly porphyry, core is all mixed, but little quartz, 18" of greenstone. A very little chalcopyrite.	

488.0 End of Hole.

Sludge Assays
175 - 185 - .38%
185 - 195 - Trace
195 - 205 - Trace

NOT TO BE REMOVED FROM
THE OFFICE OF THE RESIDENT
GEOLOGIST, ONT. DEPT. OF MINES
SAULT STE. MARIE, ONT.

S 31-1502

SYLVANITE GOLD MINES LIMITED

(NO PERSONAL LIABILITY)

TYPED BY AT

DATE April 7th, 1955

PROPERTY Breton

HOLE NO. 7

LOCATION Claim 35136
 PURPOSE
 DRILLED BY Heath & Sherwood
 LOGGED BY W. D. Stroud
 DATE STARTED
 DATE FINISHED Date logged - April 1, 1955
 CORE RECOVERY

BEARING N. 44° W.
 DIP 50°
 CO-ORDINATES - N. S. 285' #1 P. 35137
 E. 3' #1 P. 35137 W.
 ELEV.
 DIP TESTS
 BEARING TESTS

FOOTAGE	SAMPLE NO.	VALUE DWTS.	WIDTH	AV.	ROCK
0.0		1 Cu.			Casing
23.0					Breccia, mostly porphyry, 10% quartz, V.S.M.
34.0	183184	0.16	1.0		Breccia, 75% quartz, chalcopryrite.
35.0					Breccia, mostly porphyry, also part leached, some pyrite.
50.0	183185	0.19	5.0		Breccia, 50% quartz, 6" sand in box at 51
55.0					Breccia, 95% porphyry.
65.0	183186	0.37	5.0		Breccia, 10% quartz, altered porphyry and greenstone.
70.0	183187	0.30	6.5		Breccia, 10% quartz, altered porphyry and greenstone.
76.5					Breccia, 10% quartz, a little chalcopryrite.
125.0					Breccia, core a little broken up, a few specks of chalcopryrite.
160.0					Breccia, some grinding.
175.0					Breccia, much altered, considerable chlorite, in places quite talcose.
199.0	183188	0.04	6.0		Breccia, strongly leached.
205.0					Breccia, strongly leached.
209.5					Breccia, ground core, mostly crystal pyrite.
210.5					Breccia, very badly ground, some very talcose.
225.0					Breccia, leached.
243.0					Breccia, ground core.
244.5					Greenstone
252.5					Greenstone, ground core.
253.1	183189	4.58	6.9		Breccia
260.0	183190	1.77	5.0		Breccia
265.0	183191	0.63	5.0		Breccia
270.0	183192	3.74	5.0		Breccia
275.0	183193	1.55	6.0		Breccia
281.0	183194	0.23	3.5		Breccia
284.5	183195	1.21	5.5		Breccia, not so much chalcopryrite, 50% greenstone.
290.0	183196	0.42	5.0		Breccia
295.0	183197	3.17	5.0		Breccia
300.0	183198	0.62	3.8		Breccia, badly ground 24" + missing, mostly quartz.
303.8	183199	0.72	7.7		Breccia, good core, splashes of chalcopryrite and of pyrite.
311.5	183200	0.34	6.5		Breccia, pyrite splashes, some chalcopryrite.
318.0					Breccia, 20% quartz, a little calcite.
350.0					Breccia, a few splashes of pyrite, a little calcite.
375.0					Breccia, a few splashes of pyrite and chalcopryrite.
400.0					Mostly porphyry, 35% greenstone, some pyrite in clusters.
418.0					Breccia, a little pyrite in clusters, 30% quartz and carbonate.
435.0					Greenstone, 20% porphyry, 10% quartz, etc.
450.0					Breccia, predominantly porphyry, last 8' porphyry. Several small clusters of chalcopryrite.
473.0					473.0 End of Hole.

NOT TO BE REMOVED FROM
 THE OFFICE OF THE RESIDENT
 GEOLOGIST, ONT. DEPT. OF MINES
 SAULT STE. MARIE, ONT.

SYLVANITE GOLD MINES LIMITED
(NO PERSONAL LIABILITY)

TYPED BY **AT**

DATE **May 18th, 1955**

PROPERTY **Breton**

HOLE NO. **9**

LOCATION **Breton** *35136*
 PURPOSE
 DRILLED BY **Heath & Sherwood**
 LOGGED BY **W. D. Stroud**
 DATE STARTED
 DATE FINISHED **April 9/55**
 CORE RECOVERY

BEARING **N 44° W.**
 DIP **45°**
 CO-ORDINATES - N _____ S **472'**
 E _____ W **250'**
 ELEV. _____
 DIP TESTS _____
 BEARING TESTS _____

FOOTAGE	SAMPLE NO.	VALUE DWTS.	WIDTH	AV.	ROCK
0.0		1 Cu.			Casing
21.0					Porphyry
75.0					Porphyry, massive.
96.0					Tuff
125.0					Tuff, part is slightly reddish.
144.0					Tuff, finer grained.
150.5					Porphyry
152.5	183213	6.60	2.0		Porphyry. At 151' 2" of massive chalcoppyrite. At 154.7 1" of massive chalcoppyrite.
154.5					Porphyry. Porphyry is fresh. No quartz where chalcoppyrite occurs. 152 - 154 leached.
155.0	183214	6.12	0.5		Porphyry, fresh red.
163.5					Porphyry, fresh red.
167.0	183215	7.36	3.5		Porphyry, green, 165.0 - 166.5 breccia, 75% quartz.
174.0					Porphyry, red fresh.
177.5	183216	1.02	3.5		Porphyry, green, altered bands at 174.5 - 175.0 and 176.8 - 177.5.
183.2					Porphyry, red.
185.7	183217	0.30	2.5		Porphyry, green, 184.7 - 185.7 leached.
186.9					Porphyry, red.
193.0	183218	2.64	6.1		Porphyry, leached, a few spots chalcoppyrite, some quartz.
205.5					Porphyry, altered and leached slightly.
205.0					Greenstone dike.
211.0					Porphyry, altered.
215.5					Fine grain dark dike.
216.5					Porphyry, fresh to altered, minor quartz.
220.0	183219	0.42	3.5		Porphyry, fresh to altered, minor quartz.
223.0	183220	0.29	3.0		Porphyry, altered.
233.5					Granite.
243.0					Dark fine grain dike.
308.0					Granite and porphyry, a few tight quartz splashes with the odd chalcoppyrite or pyrite specks. 276.0 - 280.0 somewhat chloritic, 291.0 - 292.0 fine grain dark dike @ 45° ±, 304.0 - 307.0 bleached. 6" shearing, bleached fine grain @ 60° ±, probably on Inclusion.
309.0					Old gabbro (?) very strongly leached, apparently a water course, a few specks chalcoppyrite.
323.5					Dark fine grain dike @ 60° ±.
325.0					Granite, 331.0 - 332.5 dark fine grain dike, 346.5 - 347.5 dark fine grain dike.
350.0					Some quartz intrusions, a few specks of mineral on quartz.
399.0					Granite, some porphyry dikes, also greenstone dikes wherever quartz appears specks of mineral are likely.
436.2					Granite, some porphyry.
439.2	183221	5.76	3.0		Quartz breccia with massive chalcoppyrite.
459.0					Granite.

459.0 End of Hole.
 Note: Granite in contact phase.

NOT TO BE REMOVED FROM
 THE OFFICE OF THE RESIDENT
 GEOLOGIST, ONT. DEPT. OF MINES
 SAULT-STE. MARIE, ONT.

SYLVANITE GOLD MINES LIMITED

(NO PERSONAL LIABILITY)

TYPED BY: **msd**

DATE: **31 7 55**

PROPERTY: **gravel**

HOLE NO: **21**

LOCATION: **Collar SSN 35186**
 PURPOSE: _____
 DRILLED BY: **Heath & Sharwood**
 LOGGED BY: **Vaughn Rivers**
 DATE STARTED: _____
 DATE FINISHED: **June, 1955**
 CORE RECOVERY: _____

BEARING: _____
 DIP: **45°**
 CO-ORDINATES - N: _____ S: _____
 E: _____ W: _____
 ELEV: _____
 DIP TESTS: _____
 BEARING TESTS: _____

FOOTAGE	SAMPLE NO.	VALUE DWTS.	WIDTH	AV.	ROCK
0.0					Overburden
15.0					Breccia, granite porphyry, ground, massive, with occasional basic angular pieces. A little chalcocopyrite.
25.0					Breccia, as above, 60% angular basic material in granite porphyry.
50.0					Breccia, 50% quartz, some calcite and talcitic material. A little pyrite and epidote alteration.
60.7					Trap dike.
83.2					Breccia - altered basic fragments in red granite porphyry.
125.0					Breccia - 60% red granite
130.0	183235	0.79	5.0		Breccia -
135.0	183236	0.20	5.0	135.0	Breccia -
140.0	183237	0.31	5.0		Breccia
145.0	183238	0.24	5.0	10.68	Breccia
150.0	183239	1.29	5.0		Breccia
155.0	183240	0.29	5.0		155.1 - 155.0 Trap dike (Breccia)
160.0	183241	0.73	5.0		Breccia
185.0					Breccia - basic angular fragments in granite, porphyry. Heavy sulphides in scattered blobs.
193.0	183242	1.49	3.0		Breccia - basic angular fragments in granite, porphyry. Heavy sulphides in scattered blobs.
225.0					Breccia - basic angular fragments in quartz & porphyritic granite
230.0	183243	0.20	5.0		Breccia - basic angular fragments in quartz & porphyritic granite
235.0	183244	0.49	5.0	25.0	Breccia - basic angular fragments in quartz & porphyritic granite
240.0	183245	0.57	5.0		Breccia - basic angular fragments in quartz & porphyritic granite
245.0	183246	1.10	5.0	10.97	Breccia - basic angular fragments in quartz & porphyritic granite
250.0	183247	0.51	5.0		Breccia - basic angular fragments in quartz & porphyritic granite
255.0	183273	0.28	5.0		Breccia } 70% basic fragments in quartz calcite material
260.0	183274	0.46	5.0		Breccia } 70% basic fragments in quartz calcite material
265.0	183275	0.28	5.0		Breccia } 70% basic fragments in quartz calcite material
270.0	183276	0.31	5.0		Breccia } 70% basic fragments in quartz calcite material
275.0	183277	0.45	5.0		Breccia } 272.0 - 274.1 - dike basic
280.0	183278	0.12	5.0		Breccia } as above
285.0	183279	0.19	5.0		Breccia } as above
290.0	183248	0.72	5.0	15.0	Breccia } as above
295.0	183249	0.92	5.0		Breccia } as above
300.0	183250	0.40	5.0	10.68	Breccia } as above
317.0					Breccia
318.0					Lost core
323.0					Breccia - as above
324.5					Lost core
327.3					Breccia, some alteration to epidote. A little chalcocopyrite
329.1					Lost core
330.0					Breccia - basic material in quartz. Heavy chalcocopyrite
335.0	183251	4.68	5.0		Breccia - 330.3 - 331.8 - Lost core
340.0	183252	0.60	5.0		Breccia - as above. Heavy chalcocopyrite & pyrite.
345.0	183253	3.45	5.0		Breccia - as above. Heavy chalcocopyrite & pyrite.
350.0	183254	1.55	5.0		Breccia - as above. Heavy chalcocopyrite & pyrite.
355.0	183255	4.55	5.0		Breccia - 50% quartz, heavy chalcocopyrite & pyrite.
356.5	183256	5.60	5.0		Breccia - 50% quartz. Heavy
359.2					Breccia - 50% quartz. A little galena
363.7					Dike - fine grained brown rock with some angular basic inclusions near borders.

NOT TO BE REMOVED FROM
 THE OFFICE OF THE RESIDENT
 GEOLOGIST, ONT. DEPT. OF MINES
 SAULT STE. MARIE, ONT.

SYLVANITE GOLD MINES LIMITED
(NO PERSONAL LIABILITY)

PAGE NO. 17

TYPED BY *nd*

DATE July 22/55

PROPERTY *Bretan*

HOLE NO. *11*

FOOTAGE	SAMPLE NO.	VALUE DWTS.	WIDTH	AV.	ROCK
376.7					Porphyry red granite cut by small quartz stringers.
388.0					Dike trap
401.8					Porphyry. Red granite with quartz vein carrying breccia pieces of altered porphyry
403.1					Porphyry. alteration to chlorite some sulphides
404.3					Vein quartz. Little chalcopyrite.
411.6					Porphyry as above
415.0	183257	0.59	5.0		Dike trap. A little chalcopyrite in quartz veinlets
420.0					Dike trap. A little chalcopyrite in quartz veinlets
425.9					Vein quartz. some inclusions near borders
431.4					Porphyry. Feldspar highly altered to epidote.
438.0					Porphyry. red granite altered in places and cut by quartz stringers.
450.2					Breccia - 90% basic material in quartz matrix.
462.6					Granite, red cut by small quartz vein
476.0					Breccia - 80% basic angular material in quartz matrix
494.6					Breccia - some basic g fragments in porphyry
499.2					Dike, Black basic fine grained rock with feldspathic inclusions. A little chlorite on fracture planes
503.0					Porphyry - dark - highly altered material.
509.9					Breccia - highly altered basic material cut by small quartz vein.
511.8					Dike diabase
540.2					Granite, pale red cut by quartz stringer
549.9					Dike (Lamp.)
551.0					Quartz vein, some chalcopyrite.
551.0					END OF HOLE.

NOT TO BE REMOVED FROM
THE OFFICE OF THE RESIDENT
GEOLOGIST, ONT. DEPT. OF MINES
SAULT STE. MARIE, ONT.

S SM-1592

SYLVANITE GOLD MINES LIMITED

(NO PERSONAL LIABILITY)

TYPED BY

DATE

July 22/53

PROPERTY

32763

HOLE NO.

18

LOCATION..... 35136
 PURPOSE.....
 DRILLED BY..... South & Sherwood
 LOGGED BY..... Vaughn Rivers
 DATE STARTED.....
 DATE FINISHED..... July, 1953
 CORE RECOVERY.....

BEARING..... N. 13.5° W
 DIP..... 45°
 CO-ORDINATES - N..... S.....
 E..... W.....
 ELEV.....
 DIP TESTS.....
 BEARING TESTS.....

FOOTAGE	SAMPLE NO.	VALUE DWTS.	WIDTH	AV.	ROCK
0.0					Overburden
25.0					Breccia - angular basic fragments in granite porphyry. Little pyrite.
30.0					Breccia - angular basic fragments in quartz matrix, cut by small trap dikes.
88.3					Lamp. dike
96.2					Breccia - as above
103.2					Trap dike
107.7					Breccia - basic angular fragments in porphyritic matrix.
110.2					Porphyry - red granite
115.7					Breccia - 80% fine grained basic material with little quartz & granite
136.1					Lamp. dike cut by 6" quartz vein. $CaFeO_3$
143.0	183258	0.58	2.0		Basalt, dark very fine grained, cut by small quartz vein containing fragments of granite porphyry.
149.0					Porphyry - red granite
185.0					Basalt - black very fine grained. very small quartz stringers. Little pyrite in fractures.
194.1					Basalt. Fine grained black.
200.0					Porphyry - red granite
230.0					Breccia - 50% basic & granite fragments in quartz.
237.3					Lamp. dike
242.0	183259	0.77	2.8		Porphyry - some quartz veinlets carrying angular basic fragments
244.0					Porphyry - some quartz veinlets carrying angular basic fragments.
246.8	183260	0.59	7.0		Porphyry - as above
250.0					Porphyry
257.0	183261	0.60	1.3		Porphyry - red granite
260.0					Trap dike
262.8					Porphyry - red granite
266.3					Breccia - 50% fragments in quartz. Little pyrite mineralization
273.5	183263	0.24	6.0		Breccia - 50% fragments in quartz. Little pyrite mineralization. Little chalcopyrite.
325.0					Breccia - 50% fragments in quartz. Little pyrite mineralization.
333.0	183262	0.32	5.0		Breccia - 50% fragments in quartz. Little pyrite mineralization. Little chalcopyrite.
340.0	183264	0.67	5.0		Breccia - 50% fragments in quartz. Little pyrite mineralization. Little chalcopyrite.
343.0	183265	0.95	5.0		Breccia - 50% fragments in quartz. Little pyrite mineralization. Little chalcopyrite.
348.0					Breccia - 50% fragments in quartz. Little pyrite mineralization.
350.0					Granite (?) Red.
359.0					END OF HOLE.

NOT TO BE REMOVED FROM
 THE OFFICE OF THE RESIDENT
 GEOLOGIST, ONT. DEPT. OF MINES
 BAULT STE. MARIE, ONT.

#12

0.50/2.0

0.77/2.8
0.39/1.7
0.60/1.8

SSM 35136
35127

0.14/6.0
0.32/5.0
0.95/2.0

369
* * * *

NOT TO BE REMOVED FROM
THE OFFICE OF THE RESIDENT
GEOLOGIST, ONT. DEPT. OF MINES
SAULT STE. MARIE, ONT.

BRETON OPTION

1" = 50'
1" = 50'

SYLVANITE GOLD MINES LIMITED

(NO PERSONAL LIABILITY)

 TYPED BY **md**

 DATE **July 22/55**

 PROPERTY **Broken**

 HOLE NO **13**

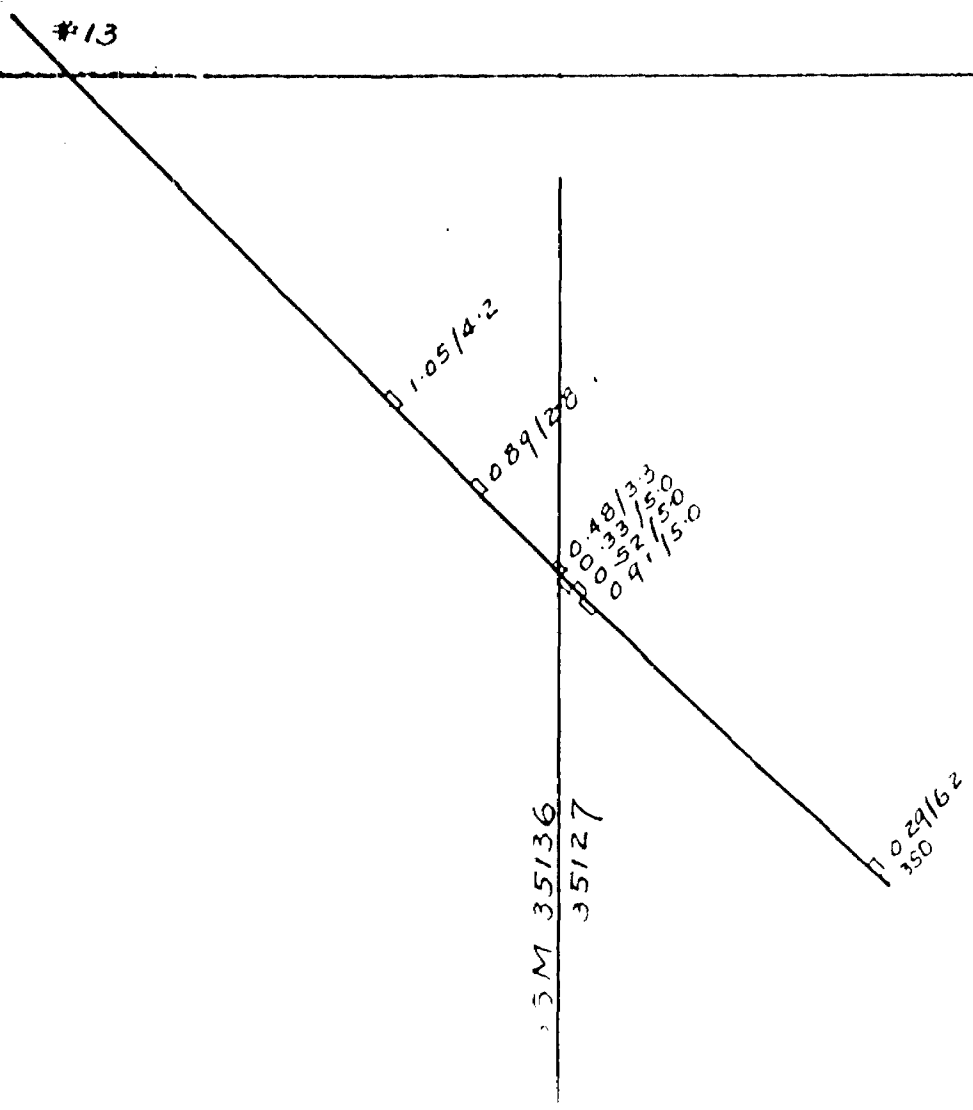
 LOCATION **35/36**
 PURPOSE _____
 DRILLED BY **Heath A. Sh. Wood**
 LOGGED BY **Vaughn Rivers**
 DATE STARTED _____
 DATE FINISHED **July, 1955**
 CORE RECOVERY _____

 BEARING _____
 DIP **45°**
 CO-ORDINATES - N _____ S _____
 E _____ W _____
 ELEV. _____
 DIP TESTS _____
 BEARING TESTS _____

FOOTAGE	SAMPLE NO.	VALUE DWT.	WIDTH	AV.	ROCK
0.0					Overburden
10.0					Granite (porphyry?) some green serpentine in fractures.
57.1					Basalt - black, very fine grained. A little pyrite
91.2					Granite (porphyry?) red
104.6					
143.1					
152.3	183256	1.05	4.2		Basalt, with many small (6") quartz veins with angular fragments. A little pyrite & chalcopyrite
173.0					Basalt - about 50% breccia in quartz veinlets
195.3	183267	0.89	2.8		Some felsite stringers. Rock very coarse grained in part. A little chalcopyrite
216.7					Basalt - fine grained out by occasional quartz stringers carrying basic fragments. A little pyrite & chalcopyrite
220.0	183268	0.48	3.3		Basalt - fine grained out by occasional quartz stringers carrying basic fragments. A little pyrite & chalcopyrite.
223.0	183269	0.33	5.0		Basalt - fine grained out by occasional quartz stringers carrying basic fragments. A little pyrite & chalcopyrite.
230.0	183270	0.52	5.0		Basalt - fine grained out by occasional quartz stringers carrying basic fragments. A little pyrite & chalcopyrite.
235.0	183271	0.91	5.0		Basalt - fine grained out by occasional quartz stringers carrying basic fragments. A little pyrite & chalcopyrite.
245.0					Basalt - fine grained out by occasional quartz stringers carrying basic fragments. A little pyrite & chalcopyrite.
252.3					Diorite (?) A little pyrite.
273.3					Basalt - some alteration to greenstone. cut by quartz calcite veinlets carrying basic angular fragments
295.0					Granite (porphyry?) red
300.7					Basalt - as above
308.5					Granite - pale flesh colour
313.4					Basalt - alteration to greenstone. Some breccia.
319.6					Granite - red
325.0					Dolerite, medium green
340.4					Basalt. Dark fine grained rock out by quartz veinlets carrying basic breccia
346.4	183272	0.29	6.2		Basalt. Dark fine grained rock out by quartz veinlets carrying basic breccia
350.0					Basalt. Dark fine grained rock out by quartz veinlets carrying basic breccia
350.0					END OF HOLE

NOT TO BE REMOVED FROM
 THE OFFICE OF THE RESIDENT
 GEOLOGIST, ONT. DEPT. OF MINES
 BAULT, STE. MARIE, ONT.

#13



NOT TO BE REMOVED FROM
THE OFFICE OF THE RESIDENT
GEOLOGIST. ONT. DEPT. OF MINES
SAULT STE. MARIE, ONT.

S SM-1592

BRETTON OPTION
1" = 50'

SYLVANITE GOLD MINES LIMITED
(NO PERSONAL LIABILITY)

TYPED BY **AC**

DATE **August 22nd, 1955.**

PROPERTY **WESTON**

HOLE NO. **25**

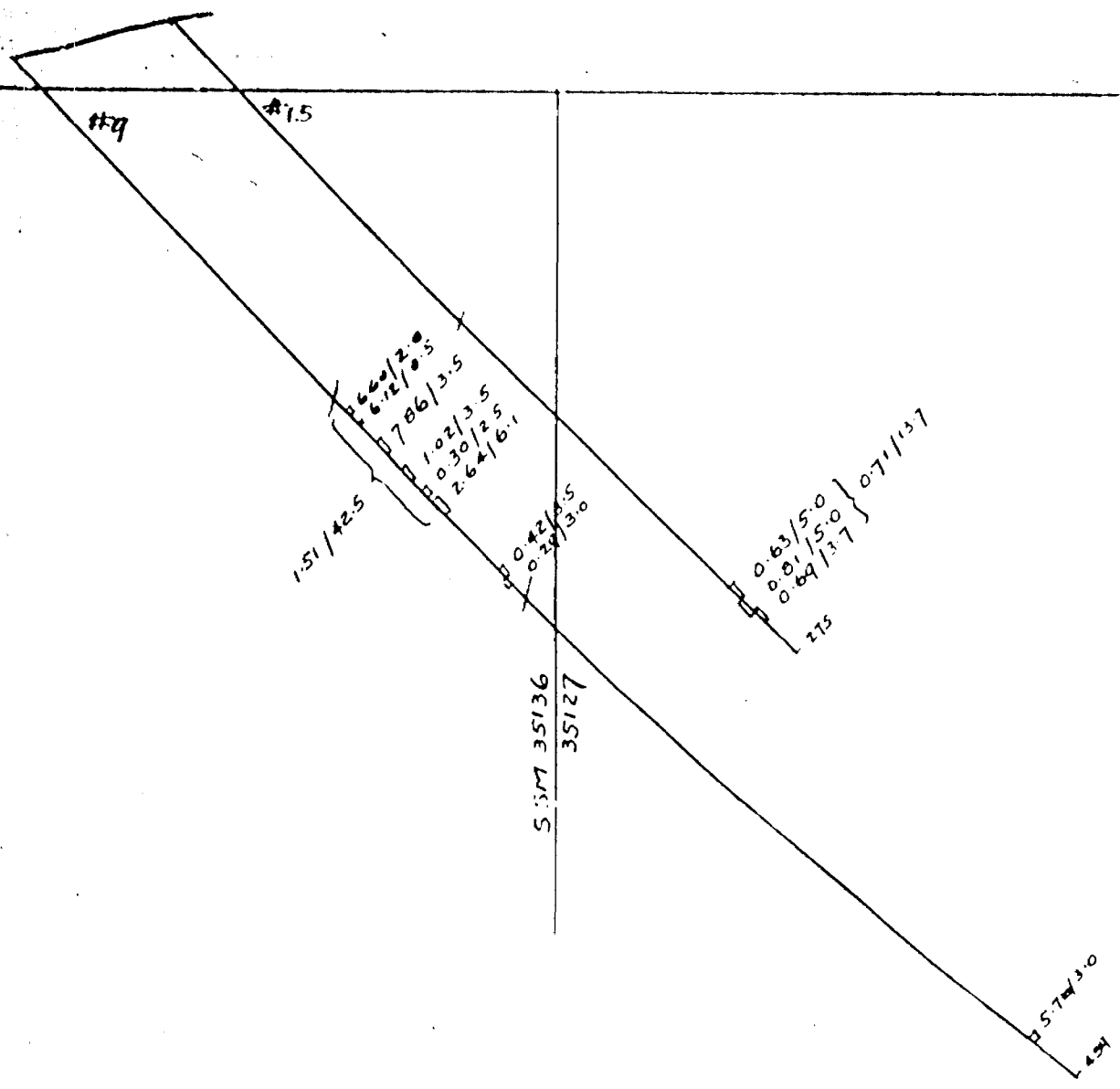
LOCATION **Erpion 35134**
 PURPOSE _____
 DRILLED BY **Keith A. Sherwood**
 LOGGED BY **Vaughn Rivers**
 DATE STARTED _____
 DATE FINISHED **July 14th, 1955**
 CORE RECOVERY _____

BEARING _____
 DIP **45°**
 CO-ORDINATES - N _____ S _____
 E _____ W _____
 ELEV. _____
 DIP TESTS _____
 BEARING TESTS _____

FOOTAGE	SAMPLE NO.	VALUE DWTS.	WIDTH	AV.	ROCK
0.0					Overburden
15.0					Breccia, 90% fine grain black rock cut by quartz stringers carrying breccia. Little pyrite and chalcopyrite in quartz.
30.9					Porphyry, granite red.
36.3					Dike trap cut by quartz stringer carrying some pyrite and chalcopyrite.
47.1					Dike, fine grain pink felsite.
53.0					Breccia, 30% quartz with angular basic fragments.
67.3					Porphyry, red granite.
69.7					Trap fine grain black rock.
73.3					Breccia, 30% quartz with some angular basic fragments.
75.9					Porphyry, red granite.
77.7					Basalt, 85% cut by quartz and calcite carrying angular basalt and porphyry fragments, very little chalcopyrite & pyrite, little galena at 118'.
126.5					Breccia, 50% quartz with angular fragments of basic rock and porphyry.
149.3					Dolerite (?) Basic dark coarse grain rock cut by quartz calcite veinlets carrying breccia.
173.8					Breccia, 20% quartz in basaltic material, little chalcopyrite.
200.0					Breccia, 30% quartz in basalt, angular breccia of basic and acidic material.
230.0	183230	0.24	5.0		Breccia, 30% quartz in basalt, angular breccia of basic and acidic material.
235.0					Breccia, 30% quartz in basalt, angular breccia of basic and acidic material.
245.0					Breccia, 30% quartz in basalt, angular breccia of basic and acidic material.
250.0	183231	0.63	5.0		Breccia, 30% quartz in basalt, angular breccia of basic and acidic material.
255.0	183232	0.81	5.0		Breccia, 30% quartz in basalt, angular breccia of basic and acidic material.
258.7	183233	0.67	3.7		Breccia, 30% quartz in basalt, angular breccia of basic and acidic material.
275.0					Breccia, 30% quartz in basalt, angular breccia of basic and acidic material.
					275.0' end of Hole.

NOT TO BE REMOVED FROM
 THE OFFICE OF THE RESIDENT
 GEOLOGIST, CNT. DEPT. OF MINES
 CANADA, QUEBEC, MARIÉ, ONT.

S SM-1592



NOT TO BE REMOVED FROM
 THE OFFICE OF THE RESIDENT
 GEOLOGIST, ONT. DEPT. OF MINES
 SAULT STE. MARIE, ONT.

S 50-1503

BRETTON OPTION

1"=50'

SYLVANITE GOLD MINES LIMITED

(NO PERSONAL LIABILITY)

TYPED BY **AT**

DATE **August 22nd, 1955**

PROPERTY **2422**

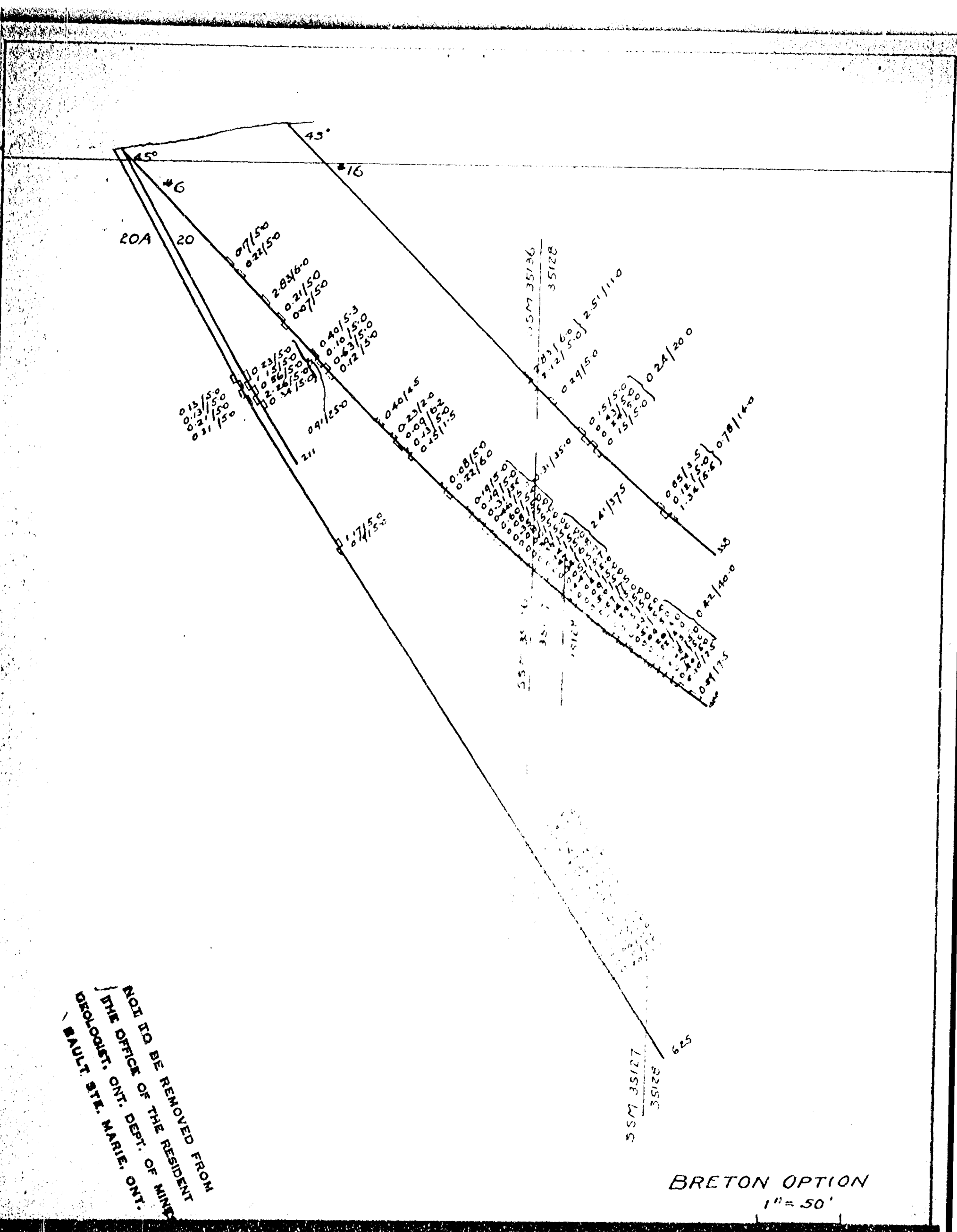
HOLE NO. **25**

LOCATION **Brotou 35136**
 PURPOSE _____
 DRILLED BY **Heath & Sherwood**
 LOGGED BY **Vaughn Rivers**
 DATE STARTED _____
 DATE FINISHED _____
 CORE RECOVERY _____

BEARING _____
 DIP **45°**
 CO-ORDINATES - N _____ S _____
 E _____ W _____
 ELEV. _____
 DIP TESTS **358' 34° (Tube 41°)**
 BEARING TESTS _____

FOOTAGE	SAMPLE NO.	VALUE DWTS.	WIDTH	AV.	ROCK
0.0					Overburden
19.0					Breccia, 10% quartz in veinlets carrying fragments, cutting basalt and porphyry. Little pyrite and chalcopyrite.
30.0					Breccia, 10% - 20% quartz in stringers with angular fragments cutting fine grain basalt.
100.0					Breccia in porphyry.
173.1					Porphyry red granite.
178.3					Breccia, 40% quartz, basic and acidic fragments, some chalcopyrite.
200.0					Breccia, 50% quartz, basic and acidic fragments, some chalcopyrite.
204.0					Breccia, 30% quartz, basic and acidic fragments, more chalcopyrite.
210.0	183284	2.83	6.0		
215.0	183285	2.12	5.0		
221.0					Porphyry, red granite.
225.0					Breccia, 20% quartz in veins.
230.0	183286	0.29	5.0		Breccia, 20% quartz in veins.
250.0					Breccia, 20% quartz in veins.
255.0	183287	0.15	5.0		Breccia, 20% quartz in veins.
260.0	183288	0.45	5.0		Breccia, 20% quartz in veins.
265.0	183289	0.24	5.0		Breccia, 20% quartz in veins.
270.0	183290	0.15	5.0		Breccia, 20% quartz in veins.
275.0					Breccia, 20% quartz in veins.
295.0					Breccia, 25% quartz, some porphyritic material, little chalcopyrite.
310.7					Porphyry, red granite.
313.2					Basalt, dark fine grain rock.
315.5					Breccia, 10% quartz in basic rock, some porphyry fragments, some chalcopyrite.
320.0	183292	0.85	3.5		Breccia, 10% quartz in basic rock, some porphyry fragments, some chalcopyrite.
325.0	183293	0.12	5.0		Breccia, 10% quartz in basic rock, some porphyry fragments, some chalcopyrite.
330.5	183291	1.34	5.5		Breccia, 10% quartz in basic rock, some porphyry fragments, notable chalcopyrite.
332.0					Breccia, 10% quartz in basic rock, some porphyry fragments, notable chalcopyrite.
343.6					Porphyry, dark fine grain rock with occasional white phenocrysts.
353.0					Porphyry red granite.
353.0'					end of hole.

NOT TO BE REMOVED FROM
 THE OFFICE OF THE RESIDENT
 GEOLOGIST, ONT. DEPT. OF MINES
 SAULT STE. MARIE, ONT.



NOT TO BE REMOVED FROM
 THE OFFICE OF THE RESIDENT
 GEOLOGIST, ONT. DEPT. OF MINES
 BAULT, STE. MARIE, ONT.

BRETTON OPTION
 1" = 50'

SYLVANITE GOLD MINES LIMITED
(NO PERSONAL LIABILITY)

TYPED BY **AT**

DATE **August 22nd, 1955**

PROPERTY **BRECON**

HOLE NO. **17**

LOCATION **Brecon 35/36**
 PURPOSE _____
 DRILLED BY **Smith & Sherrwood**
 LOGGED BY **Vaughn Rivers**
 DATE STARTED _____
 DATE FINISHED **July, 1955**
 CORE RECOVERY _____

BEARING _____
 DIP **45°**
 CO-ORDINATES - N _____ S _____
 E _____ W _____
 ELEV. _____
 DIP TESTS **250' 37° (Tubc. 4A)**
 BEARING TESTS _____

FOOTAGE	SAMPLE NO.	VALUE DWTS.	WIDTH	AV.	ROCK
0.0					Overburden.
17.9					Breccia.
16.8					Porphyry red granite.
99.6					Breccia, 30% quartz carrying black angular particles, little chalcocite.
60.8					Porphyry, red granite.
66.9					Breccia, 19% quartz in veins carrying angular fragments and cutting dark fine grain basalt.
100.0					Breccia, 20% quartz in veins carrying angular fragments and cutting dark fine grain rock.
135.3					Dike - diabase.
142.5					Breccia, 10% quartz in veinlets carrying breccia and cutting basalt.
200.0					Breccia, 20% quartz, same as above.
225.0					Breccia, 25% quartz in veinlets carrying angular breccia pieces, matrix fine grain basalt.
240.0					Porphyry, red granite.
250.0					250.0' end of hole.
					sample.

NOT TO BE REMOVED FROM
 THE OFFICE OF THE RESIDENT
 GEOLOGIST, ONT. DEPT. OF MINES
 SAULT STE. MARIE, ONT.

SYLVANITE GOLD MINES LIMITED

(NO PERSONAL LIABILITY)

TYPED BY **AT**

DATE **September 12th, 1955.**

PROPERTY **SYLVANITE**

HOLE NO. **88**

LOCATION **35136**
 PURPOSE _____
 DRILLED BY **Heath & Sherwood**
 LOGGED BY **Y. Rivara**
 DATE STARTED _____
 DATE FINISHED **August 23rd, 1955**
 CORE RECOVERY _____

BEARING _____
 DIP **40°**
 CO-ORDINATES - N _____ S _____
 E _____ W _____
 ELEV. _____
 DIP TESTS _____
 BEARING TESTS _____

FOOTAGE	SAMPLE NO.	VALUE DWTS.	WIDTH	AV.	ROCK
0.0					Overburden.
18.5					Granite, fine grain fresh pink rock.
69.0					Basalt, black fine grain.
81.0					Breccia, weathered angular porphyry in quartz.
88.0					Granite porphyry, fresh pink colour with large white phenocrysts.
126.0					Breccia basic angular material in quartz.
130.5					Basalt, fine grain black.
135.6					Breccia, angular basic material and some pink granite porphyry.
150.0	183401	0.25	5.0		Breccia, angular basic material and some pink granite porphyry.
155.0	183402	1.15	5.0		Breccia, angular basic material and some pink granite porphyry.
160.0	183403	.96	5.0		Breccia, angular basic material and some pink granite porphyry.
165.0	183404	2.26	5.0		Breccia, angular basic material and some pink granite porphyry.
170.0	183405	.54	5.0		Breccia, angular basic material and some pink granite porphyry.
175.0					Granite, pale pink rock, highly weathered.
177.8					Breccia, granite porphyry cut by quartz veins, very little basic fragments.
182.0					
211.0					End of Hole

Note: Hole caved or sandbed up, core barrel and bit were lost.

NOT TO BE REMOVED FROM
 THE OFFICE OF THE ASSISTANT
 GEOLOGIST, ONT. DEPT. OF MINES
 BAULT, STE. MARIE, QUEBEC

SYLVANITE GOLD MINES LIMITED

(NO PERSONAL LIABILITY)

PAGE No. 8

TYPED BY AS

DATE September 29th, 1955.

PROPERTY MINCON

HOLE No. 22

FOOTAGE	SAMPLE NO.	VALUE DWTS.	WIDTH	AV.	ROCK
550.0	183480	0.24	5.0		Breccia, 20% quartz, mostly porphyry fragments, some chalcoppyrite.
553.0	183481	0.28	5.0		Breccia, 20% quartz, mostly porphyry fragments, some chalcoppy. pe.
560.0					Breccia, 20% quartz, mostly porphyry fragments, some chalcoppyrite.
563.0	183482	0.46	5.0		Breccia, 20% quartz, mostly porphyry fragments, some chalcoppyrite.
570.0	183483	0.74	5.0		Breccia, 20% quartz, mostly porphyry fragments, some chalcoppyrite.
575.0					Breccia, 20% quartz, mostly porphyry fragments.
600.0					Breccia, 30% quartz, fragments of porphyry and basic material.
603.0	183484	0.23	5.0		Breccia, 40% quartz and calcite, mostly basic fragments.
610.0	183485	0.24	5.0		Breccia, 40% quartz and calcite, mostly basic fragments.
613.0	183486	0.30	5.0		Breccia, 40% quartz and calcite, mostly basic fragments.
620.0	183487	0.35	5.0		Breccia, 40% quartz and calcite, mostly basic fragments.
623.0	183488	1.01	5.0		Breccia, 40% quartz and calcite, mostly basic fragments.
630.0	183489	0.57	5.0		Breccia, 40% quartz and calcite, mostly basic fragments.
633.0	183490	0.34	5.0		Breccia, 40% quartz and calcite, mostly basic fragments.
640.0	183491	0.68	5.0		Breccia, 40% quartz and calcite, mostly basic fragments.
675.0					Breccia, 40% quartz and calcite, mostly basic fragments.

675.0' End of Hole

NOT TO BE REMOVED FROM
 THE OFFICE OF THE RESIDENT
 GEOLOGIST, ONT. DEPT. OF MINES
 SAULT STE. MARIE, ONT.

SYLVANITE GOLD MINES LIMITED
(NO PERSONAL LIABILITY)

TYPED BY **AZ**

DATE **May 18th, 1955**

PROPERTY **Bronson**

HOLE No. **2** **EX CORE**

LOCATION **Bronson Cl. 35137**
 PURPOSE
 DRILLED BY **Heath A. Sherwood**
 LOGGED BY **F. D. Stroud**
 DATE STARTED
 DATE FINISHED **February 2/55**
 CORE RECOVERY

BEARING **Z. 45° E.**
 DIP **65°**
 CO-ORDINATES - N **250' 31 35137**
 E
 W **295' 31 35137**
 ELEV.
 DIP TESTS
 BEARING TESTS

FOOTAGE	SAMPLE NO.	VALUE DWTS.	WIDTH	AV.	ROCK
0.0					
22.0					
75.0					
100.0					
175.0					
					<p>Casing Quartz breccia with a few splashes of pyrite and chalcopyrite in the quartz, 15% quartz. Lost core 43.0 - 44.9, much grinding. Quartz breccia, 75.0 - 77.0 little quartz. Lost core 79.0 - 80.0, 81.3 - 82.5, 83.0 - 84.0, 84.3 - 85.0, 91.0 - 93.5, 98.0 - 98.8. At 90.2 - 90.5 almost solid chalcopyrite. Quartz breccia. 175.0 End of Hole No samples, core recovery very poor. <u>Sludges</u> 95.0 - 100.0 - 0.81 100.0 - 110.0 - 2.4 110.0 - 120.0 - 2.4 120.0 - 130.0 - 1.8</p>

THE OFFICE OF THE
 GEOLOGIST, ONT. DEPT. OF MINES
 YEAULT ST. MARIE, ONT.

SYLVANITE GOLD MINES LIMITED
(NO PERSONAL LIABILITY)

TYPED BY **AT**

DATE **May 18th, 1955**

PROPERTY **Bretton**

HOLE NO. **3 Ex Core**

LOCATION **Bretton**
 PURPOSE _____
 DRILLED BY **Heath & Sherwood**
 LOGGED BY **W. D. Stroud**
 DATE STARTED _____
 DATE FINISHED **April 9/55**
 CORE RECOVERY _____

BEARING **N. 46° E.**
 DIP **45°**
 CO-ORDINATES - N. _____ S. **2907**
 E. _____ W. **2151**
 ELEV. _____
 DIP TESTS _____
 BEARING TESTS _____

FOOTAGE	SAMPLE NO.	VALUE DWTS. Cu.	WIDTH	AV.	ROCK
0.0					
28.0					Casing
95.0					Granite with dikes or inclusions of greenstone. At 85' some clusters of pyrite
124.6					Breccia, 25% quartz, rock is granite, porphyry and greenstone.
127.3	183222	0.84	2.7		Breccia
					Breccia. At 142 and 143.5, some chalcopyrite.
150.0					Breccia
185.0					Breccia
					185.0 End of Hole

NOT TO BE REMOVED FROM
 THE OFFICE OF THE RESIDENT
 GEOLOGIST, ONT. DEPT. OF MINES
 SAULT STE. MARIE, ONT.

SYLVANITE GOLD MINES LIMITED

(NO PERSONAL LIABILITY)

TYPED BY **AP**

DATE **June 9th, 1955**

PROPERTY **Bretas**

HOLE NO. **4 (K)**

LOCATION **Bretas**
 PURPOSE _____
 DRILLED BY **Heath & Sherwood Drilling Ltd.**
 LOGGED BY **W. D. Stroud**
 DATE STARTED _____
 DATE FINISHED **April 1955**
 CORE RECOVERY _____

BEARING **N. 45° E.**
 DIP **45°**
 CO-ORDINATES - N _____ S **170**
 E _____ W **345**
 ELEV. _____
 DIP TESTS _____
 BEARING TESTS _____

FOOTAGE	SAMPLE NO.	VALUE DWTS.	WIDTH	AV.	ROCK
0.0					Casing
28.0					Breccia
178.0					178.0 End of Hole
					Bad core recovery

NOT TO BE REMOVED FROM
 THE OFFICE OF THE RESIDENT
 GEOLOGIST, ONT. DEPT. OF MINES
 SAULT STE. MARIE, ONT.

S SM-1592

SYLVANITE GOLD MINES LIMITED

(NO PERSONAL LIABILITY)

TYPED BY **AT**

DATE **March 16th, 1955**

PROPERTY **Bretton**

HOLE NO. **5 #A-CORE**

LOCATION **Claim 35137**
 PURPOSE
 DRILLED BY **Feath & Sherwood**
 LOGGED BY **H. D. Stroud**
 DATE STARTED
 DATE FINISHED **Date logged - February 23, 1955**
 CORE RECOVERY

BEARING **N. 44° W. Mag.**
 D.P. **45°**
 CO-ORDINATES - N. **350° 71 35137**
 E. **150° 71 35137**
 W. **150° 71 35137**
 ELEV.
 DIP TESTS
 BEARING TESTS

FOOTAGE	SAMPLE NO.	VALUE DWT. % Cu.	WIDTH	AV.	ROCK
0.0					Casing
23.0					F.G.
27.0					Porphyry, part quite granitic.
42.5					Quartz breccia, 15% quartz, rock is mostly porphyry and altered porphyry with some crystal pyrite, a very few small chalcopyrite crystals.
74.0					Quartz breccia, 35% pyrite in crystals.
75.0					Quartz breccia, as above.
80.0					Porphyry with some crystalline quartz and much altered in a few places. A few patches of pyrite.
113.5					Porphyry and quartz (10%) porphyry is quite rotten in part.
123.4					Very fine grain and clayey.
125.3					Porphyry, breccia, 10% quartz, some vugs, quartz is crystal. A few patches pyrite.
176.3	183101	2.10	2.7		Breccia, some chalcopyrite.
179.0					Porphyry with some quartz bands.
200.0					Breccia, with contained rock, fine grained dark?
221.0					Breccia, with some chalcopyrite.
225.0	183102	0.20	4.0		Porphyry.
229.0					Breccia, 40% quartz, part porphyry, part dark f.g.
242.2					Breccia
245.2	183103	N11	3.0		Breccia
250.0	183104	0.34	4.8		Breccia
255.0	183105	N11	5.0		Breccia
260.0	183106	Tr.	5.0		Breccia
280.0					Breccia, not much quartz, rock is grey altered porphyry mostly.
285.0	183107	0.66	5.0		Breccia
290.0	183108	0.63	5.0		Breccia
295.0	183109	0.57	5.0		Breccia
300.0	183110	Tr.			Breccia
305.0					Breccia, 15" lost core.
310.0	183111	0.51	5.0		Breccia, 10" and 10" lost core, some large splashes of crystal pyrite.
315.0	183112	0.48	5.0		Breccia, 8" and 8" lost core, some large splashes of crystal pyrite.
320.0	183113	0.36	5.0		Breccia, 50% quartz.
325.0	183114	0.36	5.0		Breccia, 25% quartz V.S.M.
330.0	183115	0.94	5.0		Breccia, 75% quartz N.M.
335.0	183116	0.29	5.0		Breccia, 20% quartz V.S.M.
339.5			4.5		Breccia, mostly and 10% quartz V.S.M.
345.0	183117	0.53	5.5		Breccia, 50% quartz S.M.
350.0	183118	N11	5.0		Breccia, 60% quartz.
355.0	183119	N11	5.0		Breccia, 1st half 75% quartz, 2nd half 10%. Rock is mostly and small inclusions of porphyry, S.M.
360.0	183120	N11	5.0		Breccia, 40% quartz, V.S.M.
365.0	183121	0.48	5.0		Breccia, 12" and 12" core missing, S.M.
370.0	183122	Tr.	5.0		Breccia, 15" + 12" core missing, V.S.M.
375.0	183123	0.24	5.0		Breccia, poor core, badly leached.
381.5			6.5		Breccia, only about 3" core in 6.5'
385.0	183124	0.04	3.5		Breccia, 20% quartz, rock is mostly grey porphyry.
390.0	183125	0.10	5.0		Breccia, slightly leached, 30% quartz.
396.5	183126	0.07	6.5		Breccia, some disseminated chalcopyrite, 75% red porphyry. Leached somewhat, 3" purple and green barite (?)
397.0					Lost Core

650 00 0417

NOT TO BE REMOVED FROM
 THE OFFICE OF THE RESIDENT
 GEOLOGIST, ONT. DEPT. OF MINES
 SAULT STE. MARIE, ONT.

SYLVANITE GOLD MINES LIMITED
(NO PERSONAL LIABILITY)

PAGE No. 2

TYPED BY AT

DATE March 16th, 1955

PROPERTY Breton

HOLE No. 5

FOOTAGE	SAMPLE NO.	VALUE DWTS.	WIDTH	AV.	ROCK
400.0	183127	0.07	3.0		Breccia, somewhat leached.
405.0	183128	0.08	5.0		Breccia.
410.0	183129	0.07	5.0		Breccia. quartz is more in form of stringers.
415.0	183130	0.10	5.0		Breccia. Silicified porphyry, a little FeS ₂ .
420.0	183131	0.16	5.0		Breccia, 20% quartz.
425.0	183132	0.18	5.0		Mostly porphyry, some stringers of chalcopyrite.
432.0	183133	0.13	7.0		Breccia.

432.0 End of Hole

Sludge Assays

225 - 235 - Trace
 295 - 305 - 1.08%
 305 - 315 - 1.9
 360 - 375 - .61
 375 - 380 - .95

NOT TO BE REMOVED FROM
 THE OFFICE OF THE RESIDENT
 GEOLOGIST, ONT. DEPT. OF MINES
 SAULT STE. MARIE, ONT.

SYLVANITE GOLD MINES LIMITED

(NO PERSONAL LIABILITY)

TYPED BY AT

DATE, June 9th, 1955

PROPERTY Breton

HOLE NO. 8 "A" CORE

LOCATION Breton 35137
 PURPOSE
 DRILLED BY Heath & Sherwood Drilling Ltd.
 LOGGED BY W. D. Stroud
 DATE STARTED
 DATE FINISHED April 8, 1955
 CORE RECOVERY

BEARING N. 44° W.
 DIP 45°
 CO-ORDINATES - N. S. 65°
 E. 180° W.
 ELEV.
 DIP TESTS
 BEARING TESTS

FOOTAGE	SAMPLE NO.	VALUE DWTS.	WIDTH	AV.	ROCK
0.0					Casing
38.0					Porphyry
76.0					Breccia, 5% quartz, a little chalcocopyrite.
81.7	183201	0.47	5.3		Breccia, 95% greenstone.
86.3	183202	1.62	2.2		Breccia. At 86.3, much iron stain and vugs, 12" small grain breccia, 2" pyrite in crystals.
88.5					Breccia, 75% greenstone, 5% quartz. At 99.5 6" carbonate, 1" splash of chalcocopyrite.
129.0					Greenstone with 10% quartz and 10% porphyry, one or two small specks chalcocopyrite.
172.0					Greenstone, 5% quartz and 5% porphyry, a few specks of pyrite.
225.0					Greenstone, 5% quartz and 5% porphyry, a few specks of pyrite.
248.0					Porphyry
252.5					Breccia, 20% quartz, 60% greenstone, 20% porphyry.
257.3	183203	0.60	5.0		Breccia, 25% quartz, 75% greenstone.
262.3	183204	0.24	5.0		Breccia, 60% porphyry, 20% quartz.
267.5	183205	0.36	5.0		Breccia, 70% greenstone, 30% quartz.
271.0	183206	1.14	3.5		Breccia, 75% porphyry.
294.5					Breccia, 35% quartz.
300.0	183207	0.30	3.5		Porphyry, 5% quartz, a few specks chalcocopyrite.
322.5					Porphyry, from 307 - 312 leached
327.5	183208	0.36	5.0		Porphyry, V.S.M.
331.6	183209	0.18	4.1		Greenstone.
334.0					Breccia, greenstone, 15% quartz.
339.0	183210	0.30	5.0		Breccia, 20% quartz.
344.0	183211	0.06	5.0		Greenstone breccia.
349.0	183212	0.18	5.0		Porphyry 60%, greenstone 35%, quartz 5%. A few specks of chalcocopyrite and pyrite.
400.0					Porphyry 65%, greenstone 25%, quartz 10%. A few specks of chalcocopyrite and pyrite.
425.0					Granite or porphyry.
460.0					460.0 End of Hole

NOT TO BE REMOVED FROM
 THE OFFICE OF THE RESIDENT
 GEOLOGIST, ONT. DEPT. OF MINES
 SAULT STE. MARIE, ONT.

S SM-1592

#10

0.41/5.3
1.62/2.2

0.60/5.0
0.24/5.0
0.36/3.5

0.30/5.5

0.36/5.0
0.10/4.0
0.06/5.0
0.18/5.0

SSM 35137
35128

NOT TO BE REMOVED FROM
THE OFFICE OF THE RESIDENT
GEOLOGIST, ONT. DEPT. OF MINES
BAULT STE. MARIE, ONT.

SSM-1502

BRETON OPTION

1" = 50'

SYLVANITE GOLD MINES LIMITED

(NO PERSONAL LIABILITY)

TYPED BY **AT**

DATE **August 22nd, 1959**

PROPERTY **BURTON**

HOLE NO. **10**

LOCATION **Erston 3E137**
 PURPOSE _____
 DRILLED BY **Heath & Shorspool**
 LOGGED BY **Vaughn Rivers**
 DATE STARTED _____
 DATE FINISHED _____
 CORE RECOVERY _____

BEARING _____
 DIP **45°**
 CO-ORDINATES - N _____ S _____
 E _____ W _____
 ELEV. _____
 DIP TESTS _____
 BEARING TESTS _____

FOOTAGE	SAMPLE NO.	VALUE DWTS.	WIDTH	AV.	ROCK
0.0					Overburden
25.0					Basalt (?) dark fine grain. Small amount of chalcocopyrite on cleavage planes.
31.7					Porphyry red granite. Quartz phenocrysts. Pyrite and chalcocopyrite in fractures.
37.3					Porphyry pale, granite, alteration of feldspar to epidote. A little pyrite and chalcocopyrite.
50.0					Porphyry serpentine in fractures. A little chalcocopyrite.
70.9					Porphyry red.
74.8					Breccia. Angular basic material in porphyry, 50% quartz, some chalcocopyrite.
80.0					Porphyry red with 25% quartz.
82.5					Basaltic dike fine grain.
83.6					Breccia, occasional basic angular pieces in porphyry.
88.1					Porphyry red, small veinlets of quartz.
92.0					Basalt dike.
92.4					Porphyry, pale, altered, large quartz phenocrysts.
100.0					Porphyry as above but more calcite.
101.3					Breccia, black, basic, angular material in porphyry.
107.1					Basalt dike (greenstone) much pyrite.
111.8					Porphyry red.
114.4					Porphyry with some basic inclusions.
123.0					Dike (Basalt)
128.2					Breccia, basic particles in granite porphyry.
150.0					Porphyry (red granite).
174.5					Breccia same as above, small amount chalcocopyrite.
193.1					Breccia, some porphyry, increase in chalcocopyrite.
216.4					Vein material much quartz, vugs of secondary quartz crystals in primary quartz, more chalcocopyrite.
225.0					Breccia 50% basic material in quartz. Feldspar altered to olivine. Some chalcocopyrite.
275.0					Breccia, angular pieces of porphyry and basic material in quartz. Little chalcocopyrite.
294.2					Breccia, same as above but more basic material. Little chalcocopyrite.
300.0					Breccia, less quartz.
325.0					Breccia, 10% quartz, much porphyry, some chalcocopyrite.
350.0					Breccia, 10% quartz, some porphyritic fragments but more altered basic material.
366.2					Breccia, much porphyry and few basic inclusions, more chalcocopyrite apparent.
374.1					Porphyry (very coarse grain) little chalcocopyrite.
386.0					Breccia, little pyrite.
388.5					Porphyry (same as above).
402.1					Dike (Trap)
406.6					Breccia, small inclusions of basic material.
422.4					Breccia, about 50% angular basic material in quartz.
428.6					Porphyry with very little breccia, pale altered.
437.0					Porphyry (red).
440.8					Breccia - few angular basic pieces in altered pale pink granite.
468.5					Dike (Trap)
471.9					Granite - some chalcocopyrite and pyrite.
480.0					

Assays on back of page.

480.0' End of Hole.

NOT TO BE REMOVED FROM
 THE OFFICE OF THE RESIDENT
 GEOLOGIST, ONT. DEPT. OF MINES
 SAULT STE. MARIE, ONT.

<u>Sample No.</u>	<u>Copper %</u>	<u>Footage</u>	
183223	0.05	195.0 - 200.0	
183224	0.05	200.0 - 205.0	
183225	0.02	205.0 - 210.0	
183226	0.05	210.0 - 215.0	
183227	0.10	215.0 - 220.0	}
183228	0.21	220.0 - 225.0	
183229	0.15	225.0 - 230.0	}
183230	0.35	230.0 - 235.0	
183231	0.14	235.0 - 240.0	}
183232	0.09	240.0 - 245.0	
183233	0.11	245.0 - 250.0	
183234	0.08	250.0 - 255.0	

30.0 = 0.52%

SYLVANITE GOLD MINES LIMITED

(NO PERSONAL LIABILITY)

TYPED BY AS

DATE August 22nd, 1955.

PROPERTY ASSTON

HOLE NO. 28

LOCATION Bruton 35127
 PURPOSE _____
 DRILLED BY Heath & Sherwood
 LOGGED BY Yanina Rivers
 DATE STARTED _____
 DATE FINISHED _____
 CORE RECOVERY _____

BEARING _____
 DIP 45°
 CO-ORDINATES - N _____ S _____
 E _____ W _____
 ELEV. _____
 DIP TESTS _____
 BEARING TESTS _____

FOOTAGE	SAMPLE NO.	VALUE DWTS.	WIDTH	AV.	ROCK
0.0					Overburden.
25.0					Porphyry, red granite.
48.7					Breccia, 10% quartz in veins carrying fragments and cutting basic rock, little pyrite and chalcopyrite.
74.0					Porphyry, red granite.
83.6					Breccia, 25% quartz, numerous fragments cutting basic rock, some chalcopyrite and pyrite.
85.0	183294	1.18	5.0		Breccia, 25% quartz, numerous fragments cutting basic rock, some chalcopyrite and pyrite.
90.0	183295	0.56	5.0		Breccia, 25% quartz, numerous fragments cutting basic rock, some chalcopyrite and pyrite.
100.0	183296	0.64	5.0		Breccia, 25% quartz, numerous fragments cutting basic rock, some chalcopyrite and pyrite.
105.0	183297	0.11	5.0		Breccia, 25% quartz, numerous fragments cutting basic rock, some chalcopyrite and pyrite.
110.0	183298	0.43	5.0		Breccia, 25% quartz, numerous fragments cutting basic rock, some chalcopyrite and pyrite.
115.0	183299	1.82	5.0		Breccia, 25% quartz, numerous fragments cutting basic rock, some chalcopyrite and pyrite.
120.0	183300	1.32	5.0		Breccia, 25% quartz, numerous fragments cutting basic rock, some chalcopyrite and pyrite.
125.0	183301	0.68	5.0		Breccia, 25% quartz, numerous fragments cutting basic rock, some chalcopyrite and pyrite.
130.0	183302	0.24	5.0		Breccia, 25% quartz, numerous fragments cutting basic rock, some chalcopyrite and pyrite.
135.0	183303	0.63	5.0		Breccia, 25% quartz, numerous fragments cutting basic rock, some chalcopyrite and pyrite.
140.0	183304	0.51	5.0		Breccia, 25% quartz, numerous fragments cutting basic rock, some chalcopyrite and pyrite.
145.0	183305	0.28	5.0		Breccia, 25% quartz, numerous fragments cutting basic rock, some chalcopyrite and pyrite.
150.0	183306	0.28	5.0		Breccia, 25% quartz, numerous fragments cutting basic rock, some chalcopyrite and pyrite.
175.0					Breccia, 25% quartz in stringers, angular basic fragments.
186.5					Breccia, 15% quartz in highly altered material.
174.0					Porphyry, dark fine grain rock, white phenocrysts about 1 centimetre size, little chalcopyrite.
250.0					Breccia, 25% quartz with angular fragments of basic material.

250.0' end of Hole.

NOT TO BE REMOVED FROM
 THE OFFICE OF THE RESIDENT
 GEOLOGIST, ONT. DEPT. OF MINES
 SAULT STE. MARIE ONT.
 S SM-1592

SYLVANITE GOLD MINES LIMITED
(NO PERSONAL LIABILITY)

TYPED BY **AT**

DATE **August 22nd, 1955.**

PROPERTY **BRETON**

HOLE NO. **19**

LOCATION **Breton 35137**
 PURPOSE
 DRILLED BY **Keith A. Sherwood**
 LOGGED BY **Tough Rivers**
 DATE STARTED
 DATE FINISHED
 CORE RECOVERY

BEARING
 DIP **45°**
 CO-ORDINATES - N
 E
 W
 ELEV.
 DIP TESTS **250' 36" (Tube 43)**
 BEARING TESTS

FOOTAGE	SAMPLE NO.	VALUE DWTS.	WIDTH	AV.	ROCK
0.0					Overburden.
10.0					Breccia, 5% - 10% quartz in matrix of angular fragments of granite porphyry and fine grain basic rock.
33.5					Porphyry, 25% quartz in veins in predominantly granite porphyry. some basic breccia.
65.0					Breccia, 25% quartz in veinlets cutting fine grain basic rock into angular fragments. About 10% porphyry, some chalcopyrite and quartz.
75.0					Breccia, 25% quartz in veinlets cutting fine grain basic rock into angular fragments. About 10% porphyry, some chalcopyrite and quartz.
80.0	133307	0.52	5.0		Breccia, 25% quartz in veinlets cutting fine grain basic rock into angular fragments. About 10% porphyry, some chalcopyrite and quartz.
85.0	133308	0.30	5.0		Breccia, 25% quartz in veinlets cutting fine grain basic rock into angular fragments. About 10% porphyry, some chalcopyrite and quartz.
90.0	133309	1.21	5.0		Breccia, 25% quartz in veinlets cutting fine grain basic rock into angular fragments. About 10% porphyry, some chalcopyrite and quartz.
95.0	133310	0.42	5.0		Breccia, 25% quartz in veinlets cutting fine grain basic rock into angular fragments. About 10% porphyry, some chalcopyrite and quartz.
100.0	133311	0.90	5.0		Breccia, 25% quartz in veinlets cutting fine grain basic rock into angular fragments. About 10% porphyry, some chalcopyrite and quartz.
108.0					Porphyry, red altered granite.
123.0					Breccia, highly altered about 20% epidote.
137.0					Dark talc (?) fine grain dark schistose rock with soft white mineral occasionally observed (like phenocrysts).
171.0					Breccia, 50% quartz in veins with weathered basic fragments.
200.0					Breccia, 50% quartz.
205.0	133312	0.23	5.0		Breccia, 50% quartz.
210.0	133313	0.20	5.0		Breccia, 50% quartz.
215.0	133314	0.50	5.0		Breccia, 50% quartz.
220.0	133315	0.55	5.0		Breccia, 50% quartz.
225.0	133316	0.17	5.0		Breccia, 50% quartz.
230.0	133317	0.14	5.0		Breccia, 50% quartz.
235.0	133318	0.12	5.0		Breccia, 50% quartz.
240.0	133319	0.43	5.0		Breccia, 50% quartz.
245.0	133320	0.15	5.0		Breccia, 50% quartz.
252.0					Breccia, 50% quartz.
254.0					lost core.
255.0					Breccia, 50% quartz, angular basic fragments, some chalcopyrite.
290.0	133321	0.75	5.0		Breccia, 50% quartz, angular basic fragments, some chalcopyrite.
295.0	133322	1.77	5.0		Breccia, 50% quartz, angular basic fragments, some chalcopyrite.
300.0	133323	0.27	5.0		Breccia, 50% quartz, angular basic fragments, some chalcopyrite.
330.0'					end of Hole.

NOT TO BE REMOVED FROM
 THE OFFICE OF THE RESIDENT
 GEOLOGIST, ONT. DEPT. OF MINES
 SAULT STE. MARIE, ONT.

SYLVANITE GOLD MINES LIMITED
(NO PERSONAL LIABILITY)

TYPED BY **AT**

DATE **September 23rd, 1955.**

PROPERTY **BALTIM**

HOLE NO. **21**

LOCATION **Bretton 35137**
 PURPOSE
 DRILLED BY **Heath & Sherwood**
 LOGGED BY **Y. Hugh Rivers**
 DATE STARTED
 DATE FINISHED
 CORE RECOVERY

BEARING **60°**
 DIP **200'** **64** **57.5**
 CO-ORDINATES - N **400'** **64** **57.5** S
 E **500'** **64** **57.5** W
 ELEV.
 DIP TESTS
 BEARING TESTS

FOOTAGE	SAMPLE NO.	VALUE DWTS.	WIDTH	AV.	ROCK
0.0					Overburden
17.0					Breccia, 30% quartz, numerous small angular basic fragments.
33.0					Basalt, black fine grain.
35.0					Breccia, 10% quartz with much granite fragments.
67.0					Breccia, mostly basic fragments. A little chalcopyrite.
100.0					Breccia, mostly fresh angular granite fragments. Some chalcopyrite.
125.0					Breccia, mostly fresh angular granite fragments. Some chalcopyrite.
130.0	183425	0.05	5.0		Breccia, mostly fresh angular granite fragments. Some chalcopyrite.
133.0	183429	0.04	5.0		Breccia, mostly fresh angular granite fragments. Some chalcopyrite.
140.0	183430	0.03	5.0		Breccia, mostly fresh angular granite fragments. Some chalcopyrite.
145.0	183431	1.22	5.0		Breccia, mostly fresh angular granite fragments. Some chalcopyrite.
150.0	183432	0.05	5.0		Breccia, mostly fresh angular granite fragments. Some chalcopyrite.
190.0					Breccia, 40% quartz and calcite, numerous small basic fragments.
215.0	183433	0.22	5.0		Breccia, 40% quartz and calcite, numerous small basic fragments.
225.0	183434	0.44	5.0		Breccia, 40% quartz and calcite, numerous small basic fragments.
203.0	183435	0.44	5.0		Breccia, 30% quartz and calcite, numerous small basic fragments.
210.0	183436	0.16	5.0		Breccia, 30% quartz and calcite, numerous small basic fragments.
215.0	183437	0.25	5.0		Breccia, 30% quartz and calcite, numerous small basic fragments.
220.0	183438	0.19	5.0		Breccia, 30% quartz and calcite, numerous small basic fragments.
225.0	183439	0.26	5.0		Breccia, 30% quartz and calcite, numerous small basic fragments.
230.0	183440	0.31	5.0		Breccia, 30% quartz and calcite, numerous small basic fragments.
275.0					Breccia, 30% quartz and calcite, numerous small basic fragments.
290.0					Breccia, 25% quartz, mixture of basic and granite porphyry fragments.
295.0	183441	0.28	5.0		Breccia, 25% quartz, mixture of basic and granite porphyry fragments.
300.0	183442	0.89	5.0		295.0 - 296.0 Massive chalcopyrite
325.0					Breccia, 25% quartz, 60% massive fresh granite porphyry. Some basic angular fragments. Little chalcopyrite.
350.0					Breccia, 15% quartz porphyry and basic fragments.
366.0					Porphyry. Granite, fresh red large (1 cm.) phenocrysts.
367.0					Breccia, 30% quartz. Large basic angular fragments. Some chalcopyrite.
375.0	183443	0.34	6.0		Breccia, 30% quartz. Large basic angular fragments. Some chalcopyrite.
381.0					Breccia, 30% quartz. Large basic angular fragments. Some chalcopyrite.
389.0					Porphyry. Granite, fresh red.
393.5					Breccia, 30% quartz, mostly basic fragments. Very little chalcopyrite.
400.0	183444	0.50	6.5		Breccia, 30% quartz, mostly basic fragments. Very little chalcopyrite.
445.0					Breccia, 30% quartz, mostly porphyry fragments, barren.
450.0	183445	0.79	5.0		Breccia, 30% quartz, mostly porphyry fragments, barren.
460.0					Porphyry granite cut by small quartz veins, barren carrying some basic material.
465.0	183446	0.24	5.0		Porphyry granite cut by small quartz veins, barren carrying some basic material.
475.0					Porphyry granite cut by small quartz veins, barren.
482.5					Porphyry red granite cut by numerous quartz veinlets, barren.
490.0	183447	0.18	7.5		Porphyry red granite cut by numerous quartz veinlets, barren.
500.0					Porphyry red granite cut by numerous quartz veinlets, barren.
503.0	183448	0.12	5.0		Porphyry 30%, breccia 50%, little pyrite.
510.0	183449	0.31	5.0		Porphyry 50%, breccia 50%, little pyrite.
525.0					Porphyry, 60% quartz, mostly basic fragments, barren.
530.0					Porphyry, 60% quartz, mostly basic fragments, barren.
535.0	183450	0.40	5.0		Porphyry, 60% quartz, mostly basic fragments, barren.

NOT TO BE REPRODUCED FROM
 THE OFFICE OF THE RESIDENT
 GEOLOGIST, ONT. DEPT. OF MINES
 BAULT STE. MARIE, ONT.

SYLVANITE GOLD MINES LIMITED

(NO PERSONAL LIABILITY)

PAGE NO. 8

TYPED BY AP

DATE September 23rd, 1955

PROPERTY BRISTOL

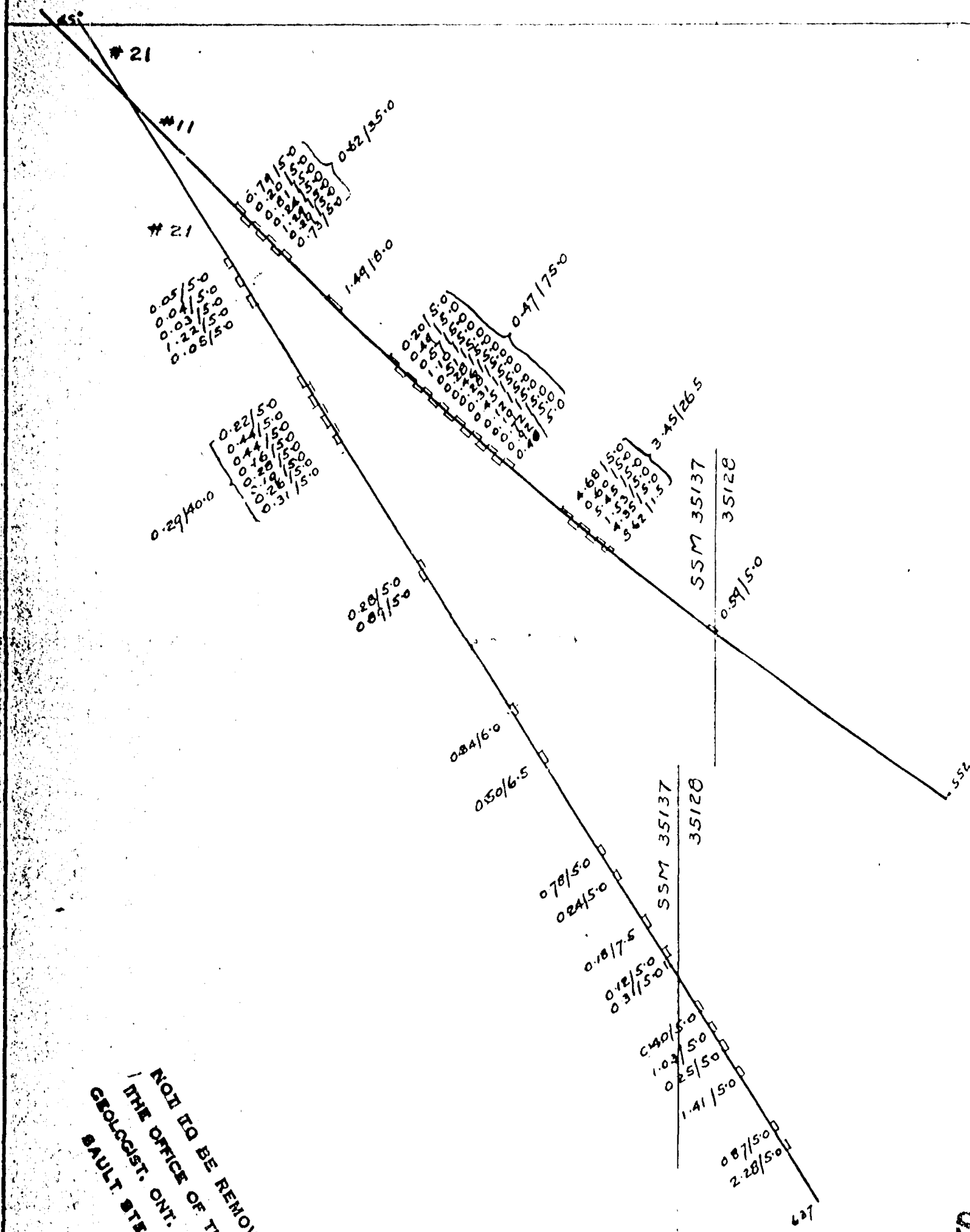
HOLE NO. 23

FOOTAGE	SAMPLE NO.	VALUE DWTS.	WIDTH	AV.	ROCK
540.0					Porphyry, 60% quartz, mostly basic fragments, barren.
545.0	183451	1.03	5.0		Porphyry, 60% quartz, mostly basic fragments, barren.
550.0					Porphyry, 50% quartz, mostly basic fragments, barren.
555.0	183452	0.23	5.0		Porphyry red granite, out by few small quartz stringers.
565.0					Porphyry red granite, out by few small quartz stringers, barren.
570.0	183453	1.41	5.0		Porphyry red granite, out by few small quartz stringers.
572.4					569.0 - 572.4 dike, black fine grain porphyritic rock, barren.
595.0					Breccia, 60%, porphyritic granite 40%, very little chalcopyrite.
600.0	183454	0.87	5.0		Breccia 60%, porphyritic granite 40%, very little chalcopyrite.
602.5					Breccia 60%, porphyritic granite 40%, very little chalcopyrite, barren.
607.3	183455	2.23	5.0		Breccia, massive chalcopyrite in quartz - 606.3 - 607.3.
620.0					Porphyry, massive red granite, barren.
637.3					Breccia, mostly porphyritic fragments in quartz and calcite.

637.3 End of Hole.

NOT TO BE REMOVED FROM
THE OFFICE OF THE RESIDENT
GEOLOGIST, ONT. DEPT. OF MINES
SAULT STE. MARIE, ONT.

S SM-1592



NOT TO BE REMOVED FROM
 THE OFFICE OF THE RESIDENT
 GEOLOGIST, ONT. DEPT. OF MINES
 BAULT ST. MARIÉ, ONT.

SSM-1592

BRETTON OPTION
 1" = 50'

SYLVANITE GOLD MINES LIMITED

(NO PERSONAL LIABILITY)

TYPED BY

DATE

July 22/55

PROPERTY **Brockton**

HOLE NO. **12**

LOCATION.....
 PURPOSE.....
 DRILLED BY **Heath A. Sherwood**
 LOGGED BY **Yaughn Rivers**
 DATE STARTED.....
 DATE FINISHED **July, 1955**
 CORE RECOVERY.....

BEARING.....
 DIP.....
 COORDINATES - N..... S.....
 E..... W.....
 ELEV.....
 DIP TESTS.....
 BEARING TESTS.....

FOOTAGE	SAMPLE NO.	VALUE DWTS.	WIDTH	AV.	ROCK
This hole was lost, as the drillers could not get through the overburden of boulders.					

NOT TO BE REPRODUCED
 THE OFFICE OF THE ASSISTANT
 GEOLOGIST, ONT. DEPT. OF MINES
 SAULT STE. MARIE, ONT.

SYLVANITE GOLD MINES, LIMITED
EXPLORATION DEPARTMENT

BRETON OPTION DRILLING

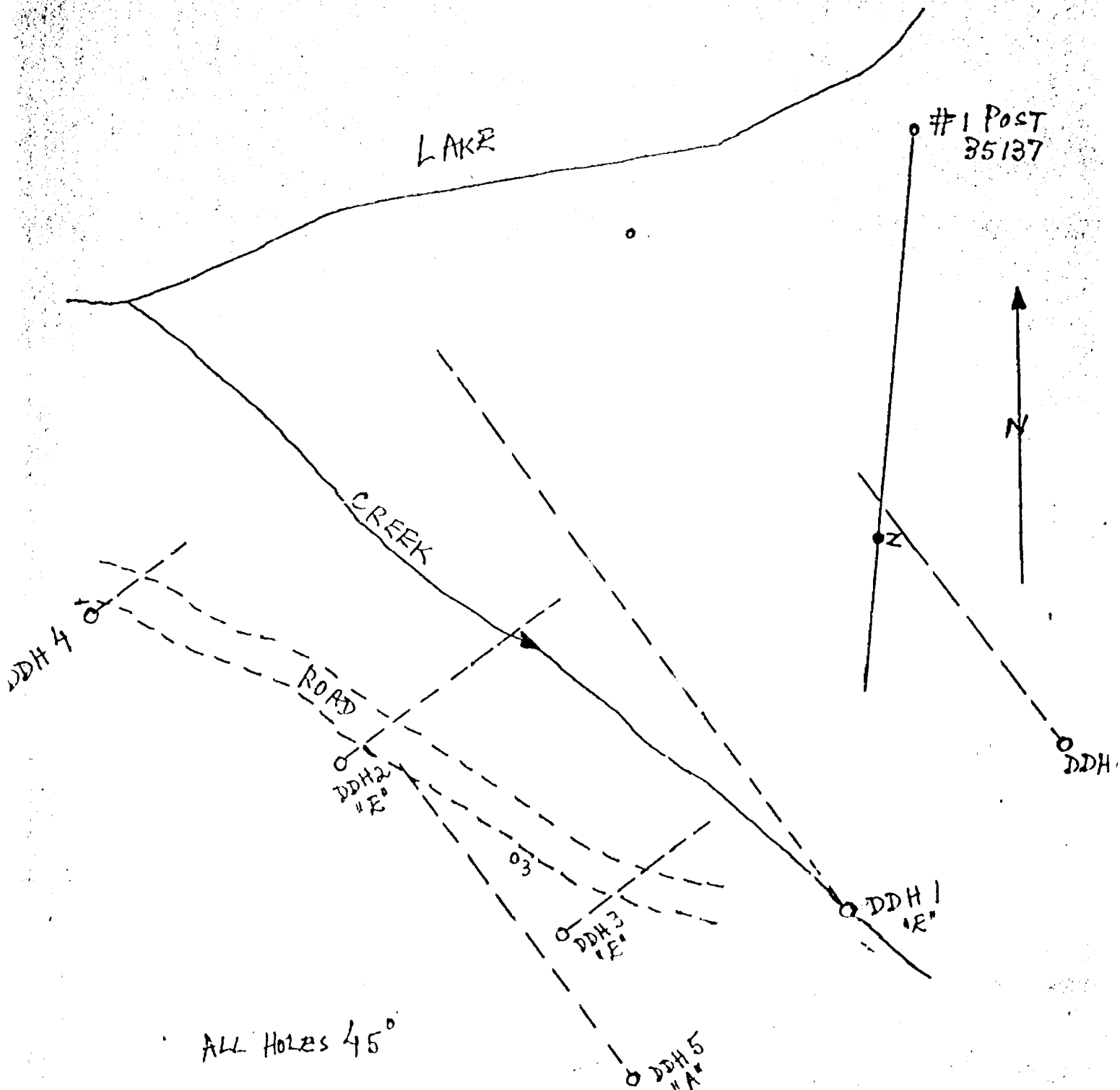
<u>D.D.H.</u>	<u>S.S.M. 35137</u>	<u>S.S.M. 35136</u>	<u>S.S.M. 35127</u>	<u>S.S.M. 35128</u>	<u>TOTAL</u>
- 1	0 - 372 = 372				372
- 2	0 - 175 = 175				175
- 3	0 - 185 = 185				185
- 4	0 - 173 = 173				173
- 5	0 - 432 = 432				432
- 6		0 - 346 = 346	346 - 374 = 29	375 - 488 = 113	488
- 7	0 - 473 = 473				473
- 8	0 - 454 = 454				454
- 9		0 - 235 = 235	235 - 459 = 224		459
- 10	0 - 480 = 480				480
- 11	0 - 423 = 423	0 - 125 - 125		423 - 552 = 129	552
- 12	125 - 423 = 298	0 - 209 = 209	209 - 369 = 160		369
- 13		0 - 216 = 216	216 - 350 = 134		350
- 14				0 - 25 = 25	25
- 15		0 - 170 = 170	170 - 275 = 105		275
- 16		0 - 216 = 216		216 - 358 = 142	358
- 17		0 - 200 = 200	200 - 250 = 50		250
- 18	0 - 250 = 250				250
- 19	0 - 300 = 300				300
- 20		0 - 211 = 211			211
- 20A		0 - 477 = 477	477 - 615 = 138	615 - 625 = 10	625
- 21	0 - 515 = 515			515 - 637 = 122	637
- 22	0 - 675 = 675				675
TOTAL	4,907	2,280	840	541	8,568

4,782

2,405

NOT TO BE REMOVED FROM
THE OFFICE OF THE RESIDENT
GEOLOGIST, ONT. DEPT. OF MINES
BAULT STE. MARIE, ONT.

208 SM-1592



ALL HOLES 45°

BRETON CLAIMS
DRILLING LAYOUT
1" = 50'
MAR. 1 '55

SYLVANITE GOLD MINES, LIMITED ASSAY SHEET

Benton

From

Special Ex Dept

Date

Feb 26 1985

SAMPLE No.	DESCRIPTION	WIDTH	VALUE PER TON
<i>1R2101</i>	<i>Special Ex Dept WDS Core</i>	<i>Swastich 2.10</i>	<i>Cu 2.86%</i>
<i>02</i>	<i>-</i>	<i>-</i>	<i>.2%</i>
<i>03</i>	<i>-</i>	<i>-</i>	<i>Nil</i>
<i>04</i>	<i>-</i>	<i>0.34</i>	<i>1.19%</i>
<i>05</i>	<i>-</i>	<i>-</i>	<i>Nil</i>
<i>06</i>	<i>-</i>	<i>-</i>	<i>Trace</i>
<i>07</i>	<i>-</i>	<i>-</i>	<i>.47%</i>
<i>08</i>	<i>-</i>	<i>0.65</i>	<i>.71%</i>
<i>09</i>	<i>-</i>	<i>-</i>	<i>.71%</i>
<i>10</i>	<i>-</i>	<i>-</i>	<i>Trace</i>

NOT TO BE REPRODUCED FROM
 THE OFFICE OF THE RESIDENT
 GEOLOGIST, ONT. DEPT. OF MINES
 GALLIE STE. MARIE, ONT.

[Signature]
 S SM-1592 Assayer

SYLVANITE GOLD MINES, LIMITED ASSAY SHEET

From General Ex Dept

Date March 12th, 1915

SAMPLE No.	DESCRIPTION	WIDTH	VALUE PER TON
	General Ex Dept H.S.S. & Hole #5 Judge 225-235	Cu	Trace
	" " " " " " 295-305	"	1.08%
	" " " " " " 305-315	"	1.9%
	" " " " " " 360-375	"	.61%
	" " " " " " 375-380	"	.95%
	" " " " Hole #6 Judge 175-185	"	.38%
	" " " " " " 185-195	"	Trace
	" " " " " " 195-205	"	Trace
	" " " " " " No Tag Judge	"	5.89%
	" " " " " " " "	"	4.38%

NOT TO BE REMOVED FROM
THE OFFICE OF THE RESIDENT
GEOLOGIST, INT. DEPT. OF MINES
SAULT STE. MARIE, ONT.

[Handwritten Signature]
Assayer

500-2500

SYLVANITE GOLD MINES, LIMITED ASSAY SHEET

Benton

From *Special Ex Dept*

Date *April 9th 1915*

SAMPLE No.	DESCRIPTION	WIDTH	VALUE PER TON
<i>13201</i>	<i>Special Ex Dept Hole Core W.S.S.</i>	<i>Cu</i>	<i>0.42%</i>
<i>02</i>	<i>" " "</i>	<i>-</i>	<i>1.62%</i>
<i>05</i>	<i>" " "</i>	<i>-</i>	<i>0.60%</i>
<i>115</i>	<i>" " "</i>	<i>-</i>	<i>0.24%</i>
<i>05</i>	<i>" " "</i>	<i>-</i>	<i>0.36%</i>
<i>06</i>	<i>" " "</i>	<i>-</i>	<i>1.14%</i>
<i>07</i>	<i>" " "</i>	<i>-</i>	<i>0.50%</i>
<i>08</i>	<i>" " "</i>	<i>-</i>	<i>0.36%</i>
<i>09</i>	<i>" " "</i>	<i>-</i>	<i>0.18%</i>
<i>10</i>	<i>" " "</i>	<i>-</i>	<i>0.58%</i>

NOT TO BE REMOVED FROM
 THE OFFICE OF THE RESIDENT
 GEOLOGIST, ONT. DEPT. OF MINES
 SAULT STE. MARIE, ONT.

[Signature]
 Assayer

9 9M-7 5

SYLVANITE GOLD MINES, LIMITED ASSAY SHEET

Benton

From Special 4 Dept

Date April 11th 1955

SAMPLE No.	DESCRIPTION	WIDTH	VALUE PER TON
183211	Special 4 Dept #8 Core W.S.S. 344.0-344.0 Cu		0.06%
12	" " #8 344.0-349.0		0.18%
15	" " #9 150.5-152.5		6.60%
148	" " 154.5-155.0		6.12%
15	" " 163.5-167.0		7.86%
16	" " 174.0-177.5		1.02%
17	" " 183.2-185.7		0.30%
18	" " 186.9-193.0		2.64%
19	" " 216.5-220.0		0.42%
20	" " 220.0-223.0	0.29%	0.29%
21	" " 436.2-439.2	5.96%	5.96%
22	" #3 124.6-127.3		0.84%

NOT TO BE REMOVED FROM
THE OFFICE OF THE RESIDENT
GEOLOGIST, ONT. DEPT. OF MINES
SAULT STE. MARIE, ONT.

J. Healy
Assayer
1832-1833

Twp. 28 Range 14 (M. 1529)

TWP. 28 RANGE 13

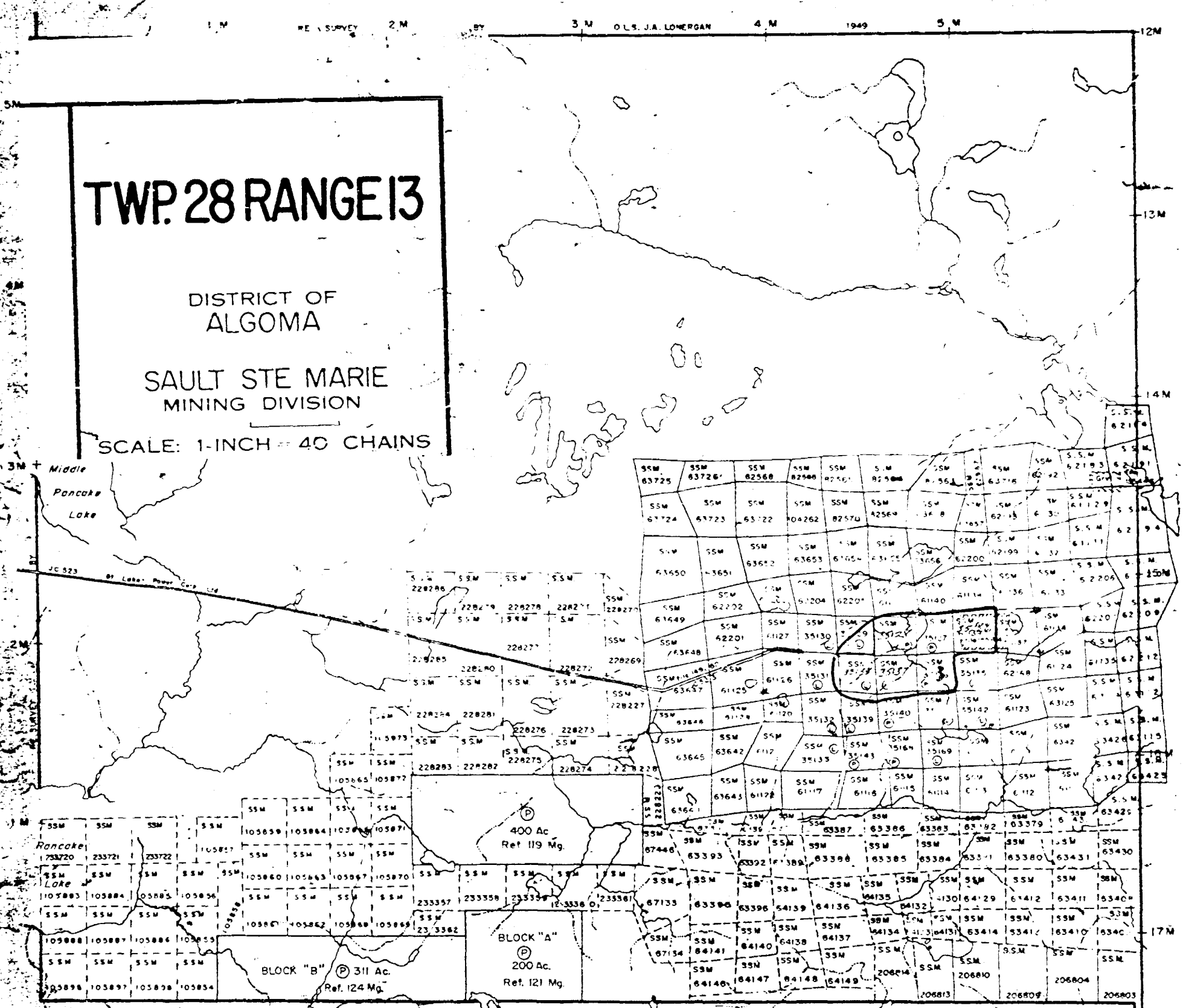
DISTRICT OF
ALGOMA

SAULT STE MARIE
MINING DIVISION

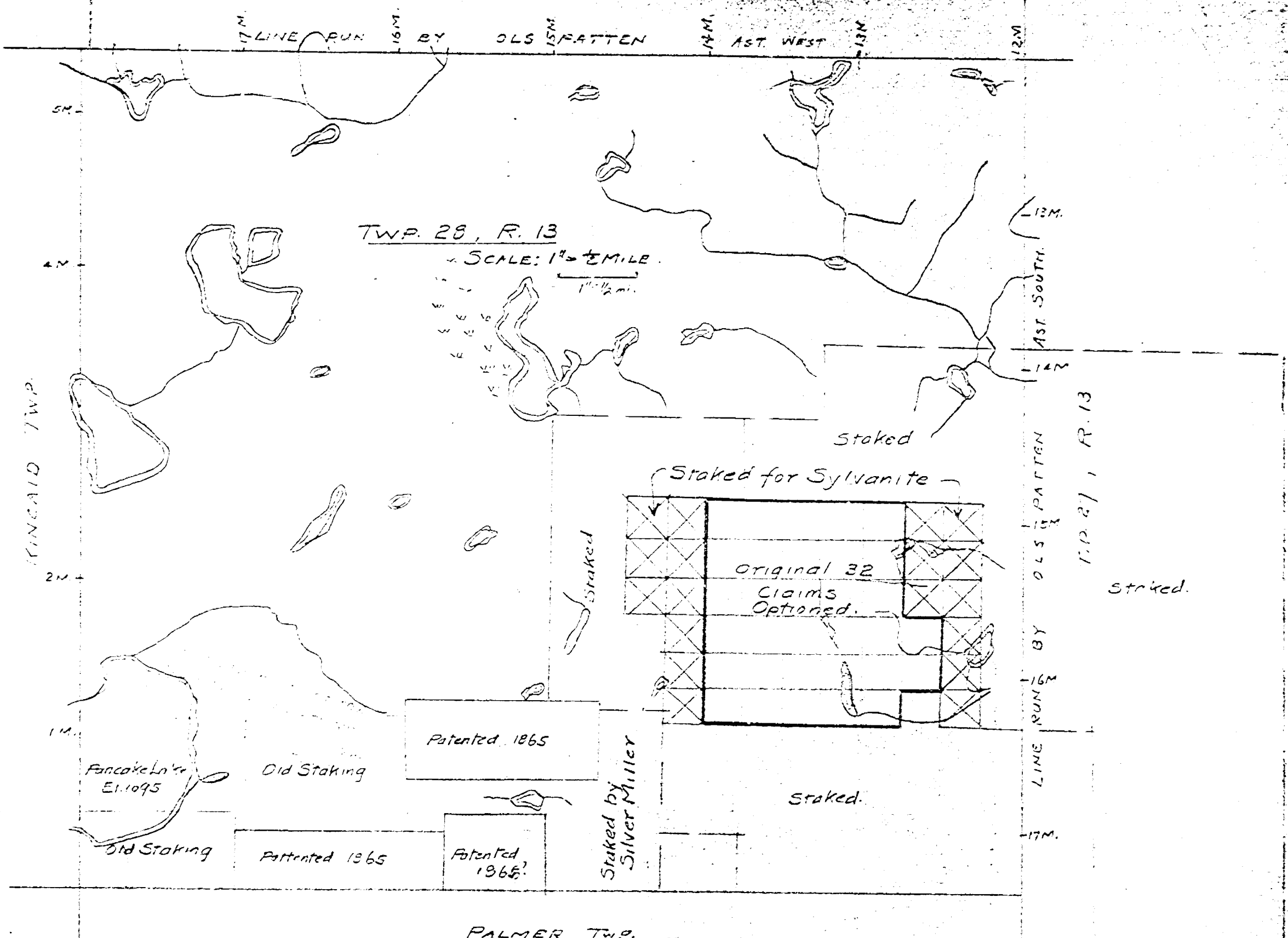
SCALE: 1-INCH = 40 CHAINS

Kincaid Twp. (M. 1286)

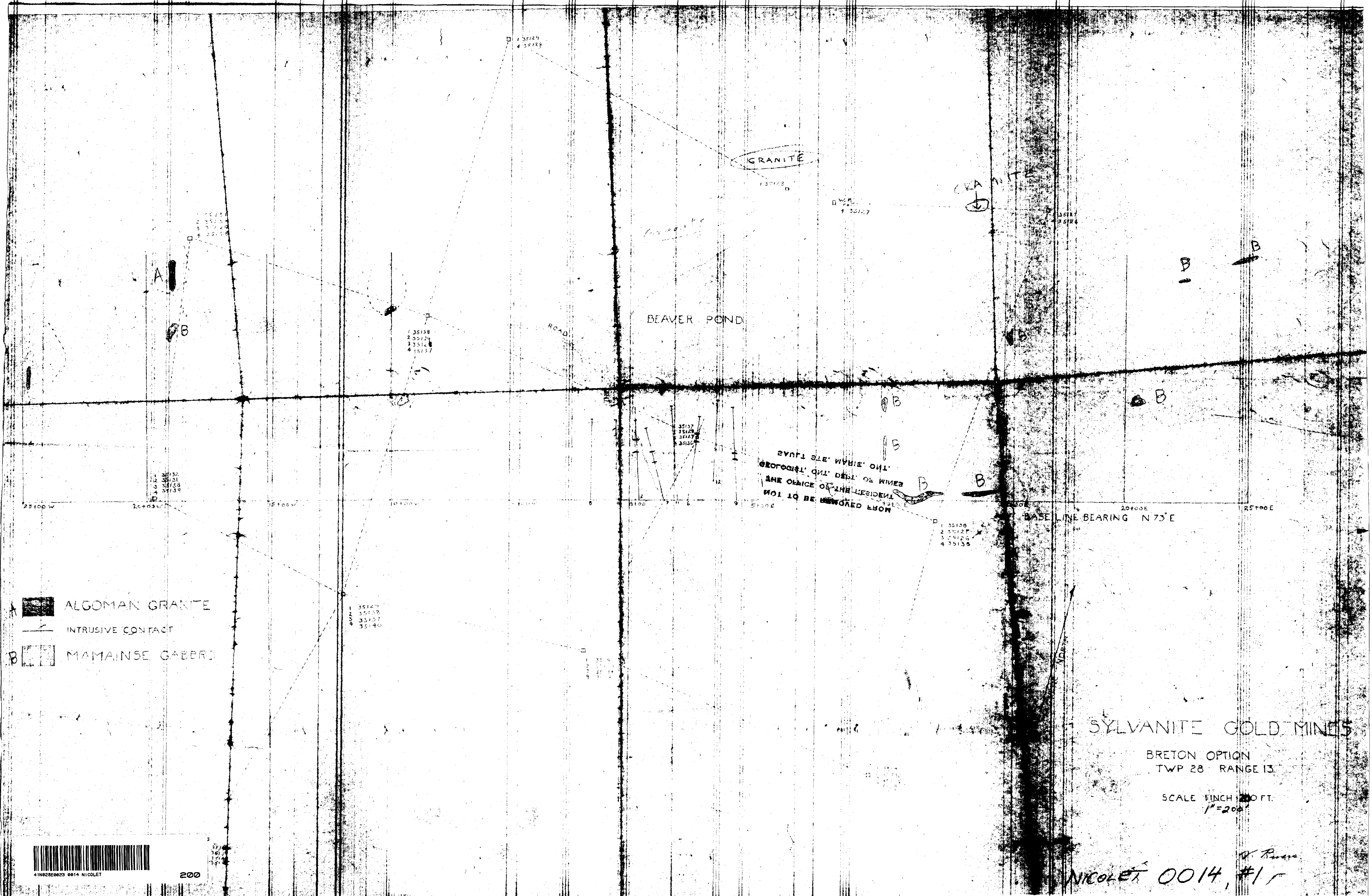
Twp. 27 Range 13 (M. 1516)



Palmer Twp. (M. 1326)



SSM-1502



ALGOMAN GRANITE
 INTRUSIVE CONTACT
 MAMAINSE GABRO

GEOL. DEPT. OF MINES
 THE OFFICE OF THE RESIDENT
 NOT TO BE REMOVED FROM

SYLVANITE GOLD MINES

BRETON OPTION
TWP 28 RANGE 13



SCALE 1 INCH = 200 FT.
1" = 200'

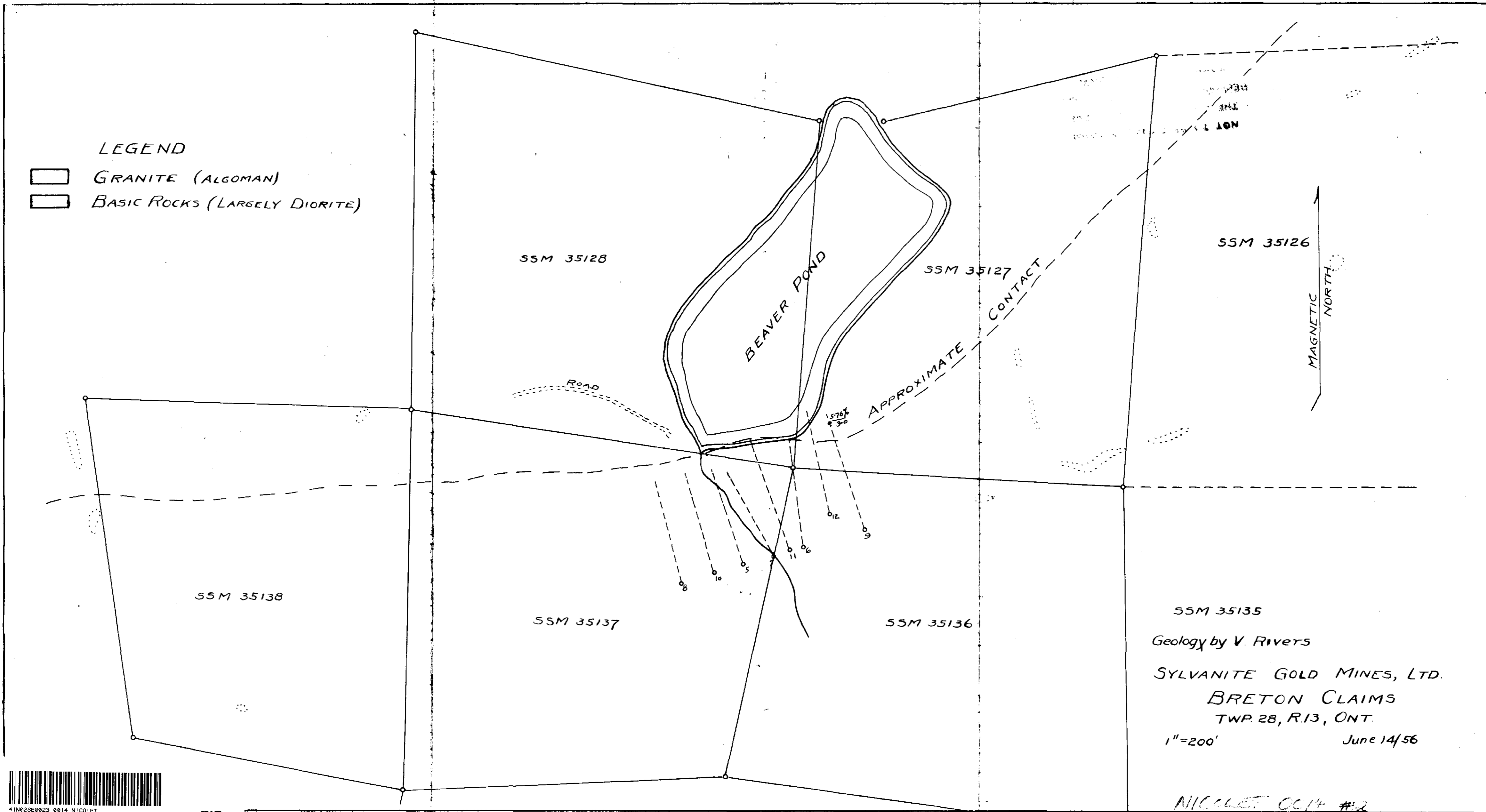
NICOLET 0014, #1



419028020 0014 NICOLET 200

LEGEND

-  GRANITE (ALGOMAN)
-  BASIC ROCKS (LARGELY DIORITE)

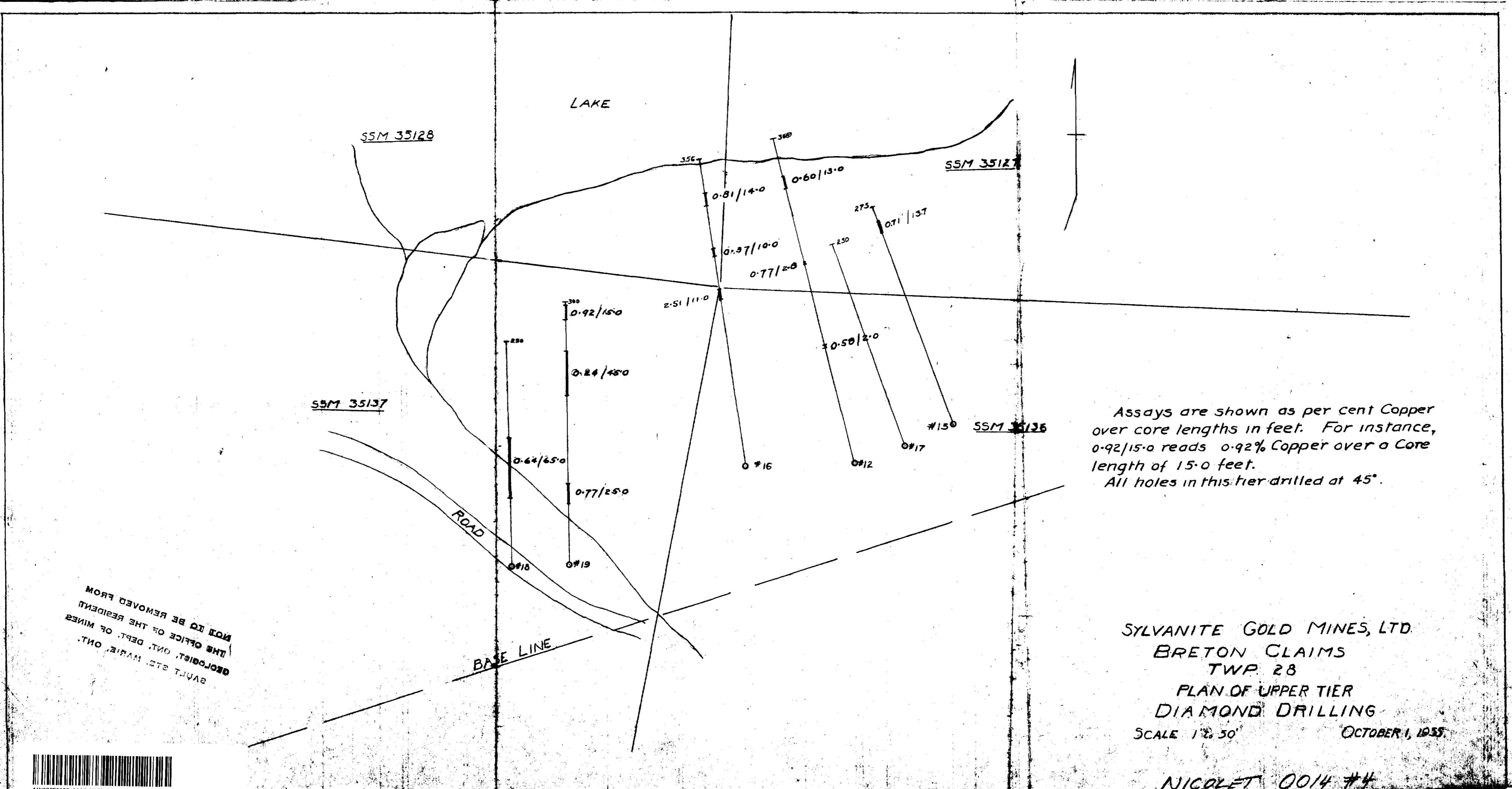


SSM 35135
Geology by V. Rivers
SYLVANITE GOLD MINES, LTD.
BRETON CLAIMS
TWP. 28, R. 13, ONT.
1"=200' June 14/56

NICOLET CC/4 #2



41N025E0023 0014 NICOLET



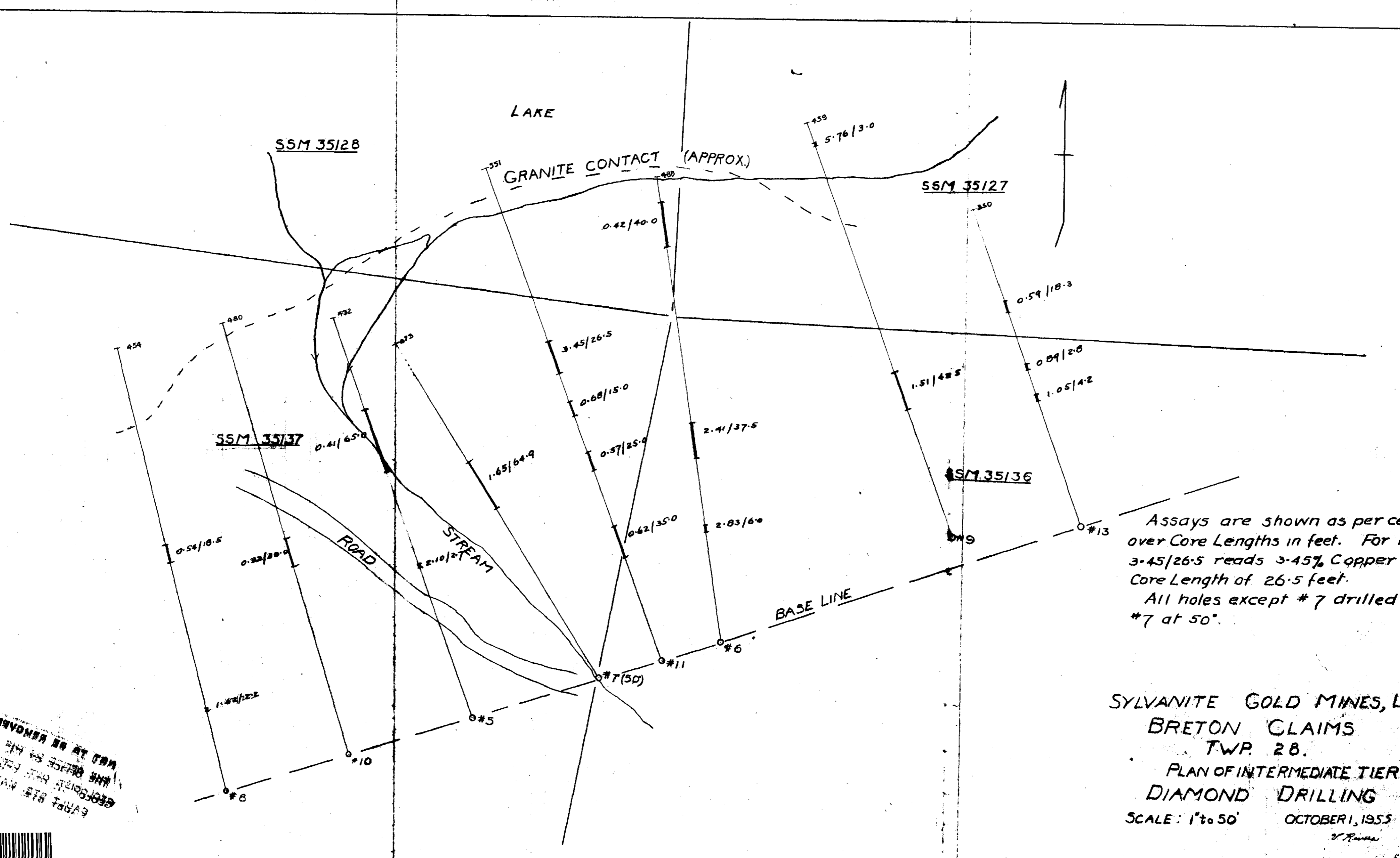
Assays are shown as per cent Copper over core lengths in feet. For instance, 0.92/15.0 reads 0.92% Copper over a Core length of 15.0 feet.
 All holes in this tier drilled at 45°.

SYLVANITE GOLD MINES, LTD.
 BRETON CLAIMS
 TWP. 28
 PLAN OF UPPER TIER
 DIAMOND DRILLING
 SCALE 1" = 50' OCTOBER 1, 1935

NICOLET 0014 #4

NOT TO BE REMOVED FROM
 THE OFFICE OF THE RESIDENT
 GEOLOGIST, ONT. DEPT. OF MINES
 UNTIL STATE MAPS OUT.





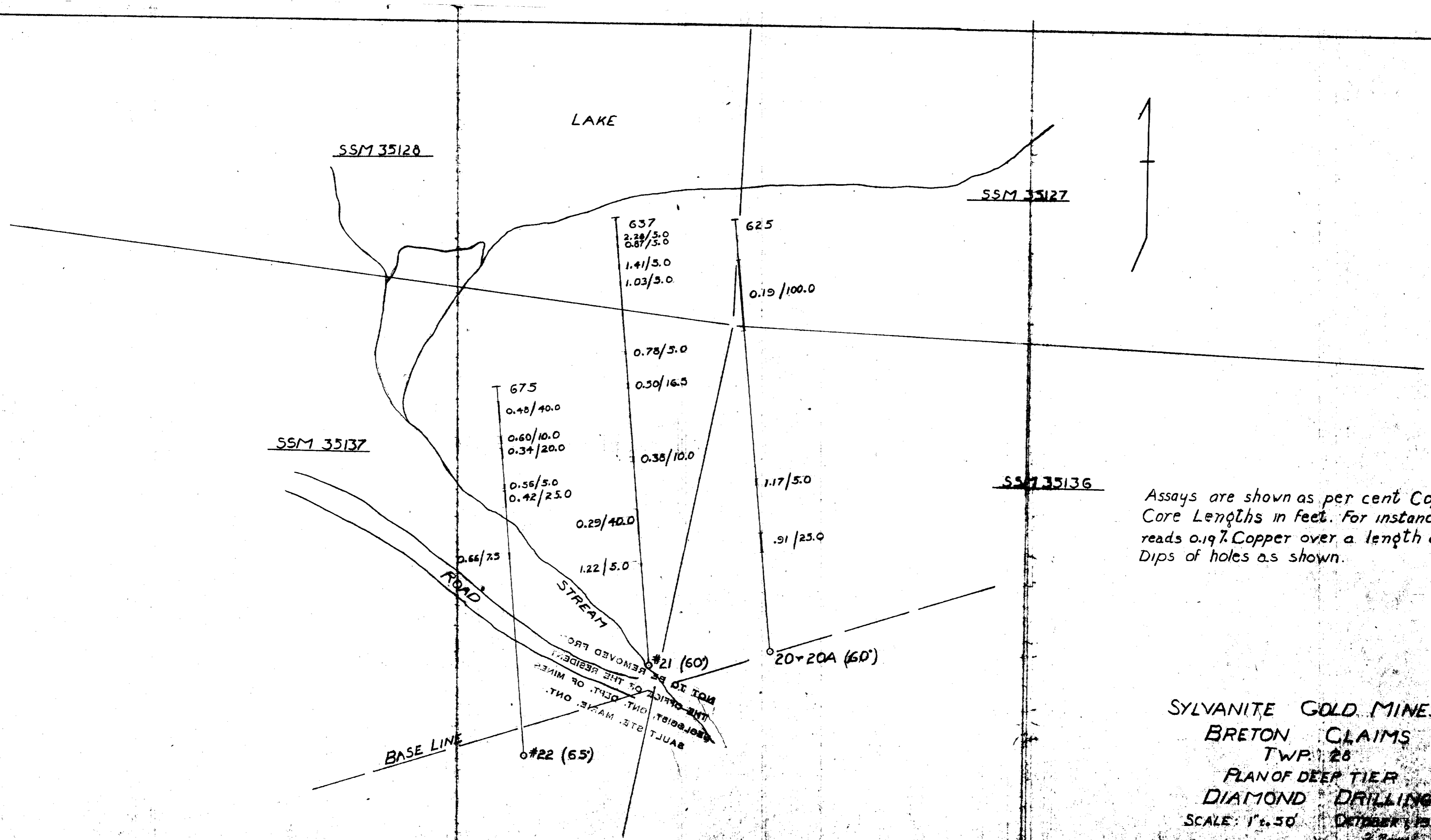
Assays are shown as per cent Copper over Core Lengths in feet. For instance, 3.45/26.5 reads 3.45% Copper over a Core Length of 26.5 feet.
 All holes except # 7 drilled at 45°. #7 at 50°.

SYLVANITE GOLD MINES, LTD.
 BRETON CLAIMS
 TWP. 28.
 PLAN OF INTERMEDIATE TIER
 DIAMOND DRILLING
 SCALE: 1" to 50' OCTOBER 1, 1955
V. Pinner

NICOLET 0014 #5

THIS PLAN IS TO BE REMOVED FROM THE OFFICE OF THE REGISTRAR OF MINES AND TO BE RETURNED TO THE REGISTRAR OF MINES





Assays are shown as per cent Copper over Core Lengths in feet. For instance, 0.19/100.0 reads 0.19% Copper over a length of 100.0 feet. Dips of holes as shown.

SYLVANITE GOLD MINES, LTD.
BRETON CLAIMS
TWP. 28
PLAN OF DEEP TIER
DIAMOND DRILLING
SCALE: 1" = 50' OCTOBER, 1955

NICOLET 001476

