



41N13NE0016 11 PILOT HARBOUR

010

DIAMOND DRILLING

AREA: PILOT HARBOUR

REPORT NO: 11

WORK PERFORMED FOR: Placer Dome Inc.

RECORDED HOLDER: SAME AS ABOVE (xx)

: OTHER

<u>CLAIM NO.</u>	<u>HOLE NO.</u>	<u>FOOTAGE</u>	<u>DATE</u>	<u>NOTE</u>
SSM 946948	0-88-15	67'	May/88	(1)
SSM 894401	0-88-24	362'	May/88	(1)
SSM 946949	0-88-25	302'	May/88	(1)
SSM 946956	0-88-26	300'	May/88	(1)
SSM 894401	0-88-27	367'	May/88	(1)
	0-88-28	537'	May/88	(1)
	0-88-29	252'	May/88	(1)
SSM 946948	0-88-30	302'	May/88	(1)
SSM 894401	0-88-31	302'	May/88	(1)
	0-88-32	502'	June/88	(1)
SSM 946947	0-88-33	501'	June/88	(1)
SSM 946947 & SSM 946948	0-88-34	427'	June/88	(1)
SSM 946948	0-88-35A	501'	May/88	(1)
SSM 894399 & SSM 946889	OY1-1	499'	June/88	(1)
	OY2	599'	June/88	(1)
SSM 946896	OY1-3	489'	June/88	(1)
SSM 946957	OY1-4	599'	June/88	(1)
SSM 946957 SSM 946958 & SSM 946979	OY1-5	509'	June/88	(1)

.../2

NOTES: (1) W9005.067, filed Mar/90

DIAMOND DRILLING

AREA: PILOT HARBOUR

REPORT NO: 11

WORK PERFORMED FOR: Placer Dome Inc.

RECORDED HOLDER: SAME AS ABOVE (xx)

: OTHER

<u>CLAIM NO.</u>	<u>HOLE NO.</u>	<u>FOOTAGE</u>	<u>DATE</u>	<u>NOTE</u>
SSM 894403 & SSM 894404	OY1-6	499'	June/88	(1)
SSM 894403	OY1-7	279'	June-July/88	(1)
	OY1-8	469'	Aug/88	(1)
SSM 894401	OY1-9	467'	Aug/88	(1)
SSM 946955 &	ON-1-88	329'	Oct/88	(1)
SSM 946954	ON-2-88	439'	Oct/88	(1)
	ON-3-88	431'	Oct/88	(1)
SSM 946954 &	ON-4-88	437'	Oct/88	(1)
SSM 946953	ON-5-88	479'	Oct/88	(1)

27

11248'

NOTES: (1) W9005.067, filed Mar/90

Plot Number

ONEIDA RESOURCES INC.

Location 0+35 W 4+21S Re: Grid G

Property Maple Lake

Sheet No. 1 of 1 Hole No. 0-88-15

Project No. N.T.S.

Core Size:

Lat. Elev. Dip -41° Collared April 25, '88
 Log. Depth 67' Bearing 245° Completed April 25, '88

Logged by: George Giga

ASSAYS

Footage	Rec'y	Rock Type/Alteration	Graphic Log	Mineralization/Structure	% Sulfides	Sample No.	Lt.	Au									
								oz/ton									
0-7		Casing				4309	29.5 31.5	2	tr.								
7-27.7		Silicified Mafic Volc. green massive, f. gr, partially sheared, chl. bearing with minor Py, infreg. irreg. quartz stringers present Lower contact 70° to CA				4310	39.5 41.5	2	tr.								
						4311	49.5 51.5	2	tr.								
						4312	59.5 61.5	2	tr.								
25.5		Broken core															
27.7-56.9		Banded silicified rhyolite pale grn grey, massive f gr., sheared, chl. biot, carb. garnet, ser bearing, siliceous, series of banded biot found throughout section															
56.9-61.1		minor Py present <1%. Lower contact 45° to CA Silicified Mafic volc.															
61.1-		Similar to 7-27.7 Lower contact 45° to CA															
67		Banded silicified rhyolite similar to 27-56.9 END OF HOLE															

ONTARIO GEOLOGICAL SURVEY
 ASSESSMENT FILES
 OFFICE
 MAR 27 1990
 RECEIVED

Project No. N.T.S.

Core Size:

Lat. Elev. Dip -45° Collared May 13, 1988

Logged by: George Giga

Dep. Depth 362' Bearing 360° Completed May 15, 1988

ASSAYS

Footage	Rec'y	Rock Type/Alteration	Graphic Log	Mineralization/Structure	% Sulfides	Sample No.	Lt.										
0-10		Casing															
10-24		Broken Core															
24-		Mafic Volc.															
150.5		grn, f. gr, silicified, carbonaceous, foliated, chl. bearing with occ. irreg. qtz carb. stringers. Presence of minor sulphides Py <1%. Foliation range from 40° to 60, avg. 50° to CA. Also appears 172.5-298.9', 311.8-362'. 2" qv with chl, carb. stringers and minor Py <1%															
48.9		Series of 1" qvs massive, white, chl., carb. bearing WITH Py <1%															
66.5-68.5		Mafic Volc.															
150.5-172.5		altered and sheared variety of 24-150.5, in addition more carbonaceous, occ. appears porphyritic. Sulfides range from <1-30%.															
191.5		Also appears 298.9-311.8' 8" irreg. qv white, massive with chl. stringers and minor Py <1%															
242.1		6" qv white, massive, with chl, carb. stringers and minor Py <1%															
285.2		8" qv white, massive with chl., carb. stringers and minor Py <1%															
294.3		2" qv with chl, carb. stringers															
341		1" qv white, massive, with chl., carb. stringers & Py <1%															
359.9		2" qv white, mass. with chl. carb. stringers and minor Py <1%															

ONTARIO GEOLOGICAL SURVEY
ASSESSMENT FILES
OFFICE
MAR 27 1990
RECEIVED

SAMPLE RECORD

PROJECT: ONEIDA

COORDINATES: L 34E - 9+50 S

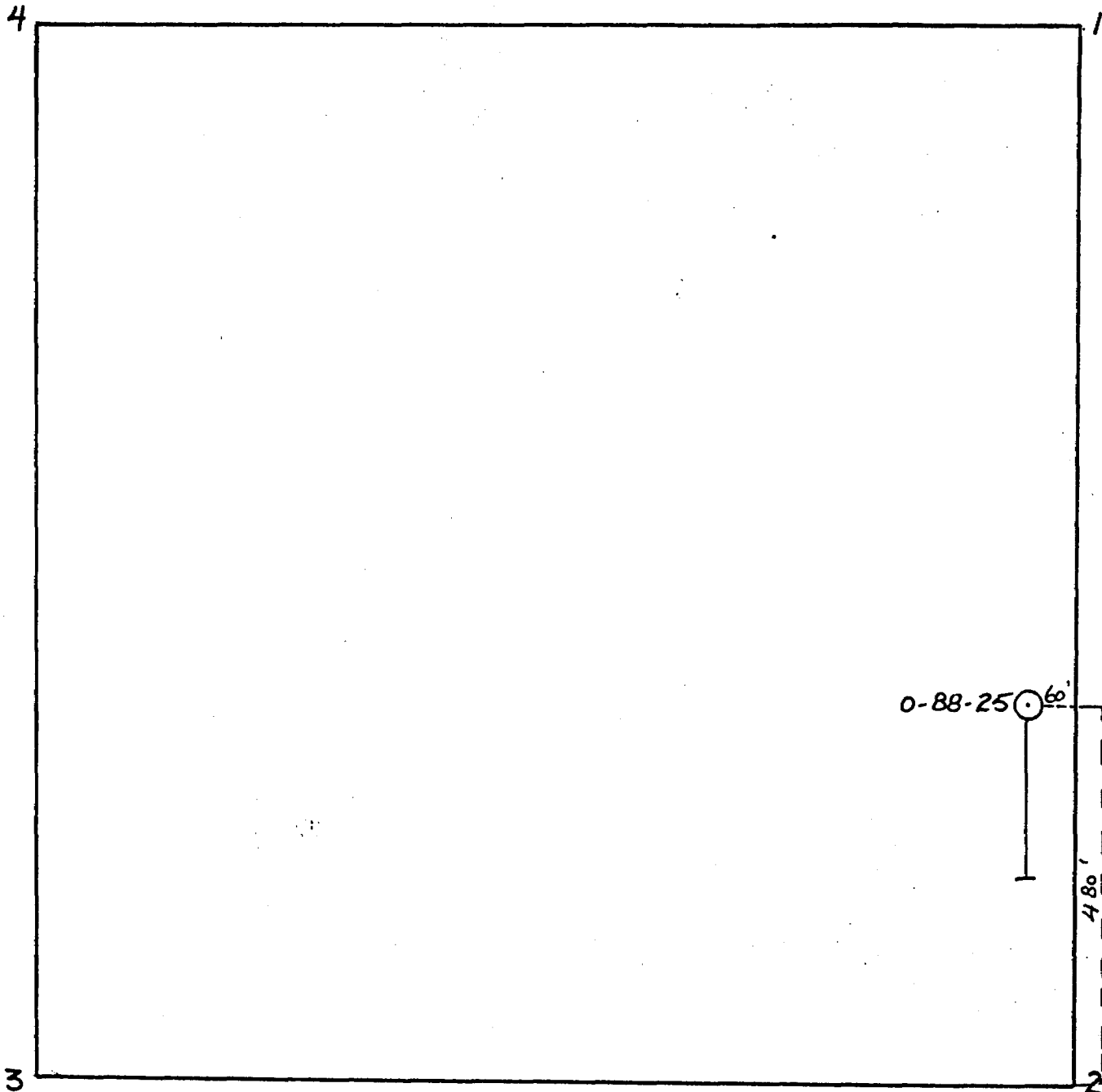
HOLE NO: 0-88-24

DATE: MAY 16, 1988

<u>Sample #</u>	<u>From</u>	<u>To</u>	<u>Feet</u>	<u>Au oz/ton</u>
4572	17	19	2	tr.
4573	27	29	2	tr.
4574	37	39	2	tr.
4575	48.5	49.5	1	tr.
4576	57	59	2	tr.
4577	66.5	68.5	2	tr.
4578	77	79	2	tr.
4579	87	89	2	tr.
4580	97	99	2	tr.
4581	107	109	2	tr.
4582	117	119	2	tr.
4583	127	129	2	tr.
4584	137	139	2	tr.
4585	147	149	2	tr.
4586	150.5	153.5	3	tr.
4587	153.5	156.5	3	tr.
4588	156.5	159.5	3	tr.
4589	159.5	162.5	3	tr.
4590	162.5	165.5	3	tr.
4591	165.5	168.5	3	tr.
4592	168.5	171.5	3	tr.
4593	171.5	172.5	1	tr.
4594	177	179	2	tr.
4595	187	189	2	tr.
4596	191.3	192.3	1	tr.
4597	197	199	2	tr.
4598	207	209	2	tr.
4599	217	219	2	0.014
4600	227	229	2	0.016
4601	237	239	2	0.010
4602	241.8	242.8	1	0.014
4603	247	249	2	tr.
4604	257	259	2	tr.
4605	267	269	2	tr.
4606	277	279	2	tr.
4607	285	286	1	tr.
4608	287	289	2	tr.
4609	293.9	294.9	1	tr.
4610	298.9	301.9	3	tr.
4611	301.9	304.9	3	tr.
4612	304.9	307.9	3	tr.
4613	307.9	311.8	3.9	tr.
4614	317	319	2	tr.
4615	327	329	2	tr.
4616	337	339	2	tr.
4617	340.5	341.5	1	tr.
4618	347	349	2	tr.
4619	357	359	2	tr.
4620	359.5	360.5	1	tr.

Bilat Harbor

CLAIM NUMBER SSM 946949



SCALE: 1" = 200'

Project No. N.T.S.

Core Size: BQ

Lat. 30+50 E Elev. Dip -45° Collared May 16, 1988

Logged by: George Giga

Dep. 4+47 N Depth 302' Bearing 180° Completed May 18, 1988

ASSAYS

Footage	Rec'y	Rock Type/Alteration	Graphic Log	Mineralization/Structure	% Sulfides	Sample No.	Lt.	Au oz/ton										
								Wgt.	Avg.									
0-10		Casing																
10-58.5		Mafic Volc. grn, f.gr., foliated, siliceous carbonaceous, chl. bearing																
		with occasional irreg. qtz-carb stringers Presence of minor Py, Po < 1% poor foliation range from 50°-70° avg 60° to CA																
17-19		Similar to 10-58.5				4621	2											
27-29		Similar to 10-58.5				4622	2											
37-39		Similar to 10-58.5				4623	2											
47-49		Similar to 10-58.5				4624	2											
						4625	1.5											
58.5-60		Mafic Volc. sheared and altered variety of 10-58.5, more carbonate, chloritic, and sericitic																
60-66		Mafic Volc. Similar to 10-58.5				4626	2											
66-68		Silicifite massive, semi bleached,																
		highly silicified, carbonate bearing, chl. and ser. bearing with irreg. qtz. carb. chl. ser. stringers. sulfides present <1%																
68-11		Mafic Volc. Similar to 10-58.5																
78.5-79.5		1.5" qtz-carb.vn with minor chl., Py, and Po <1%				4627	1											

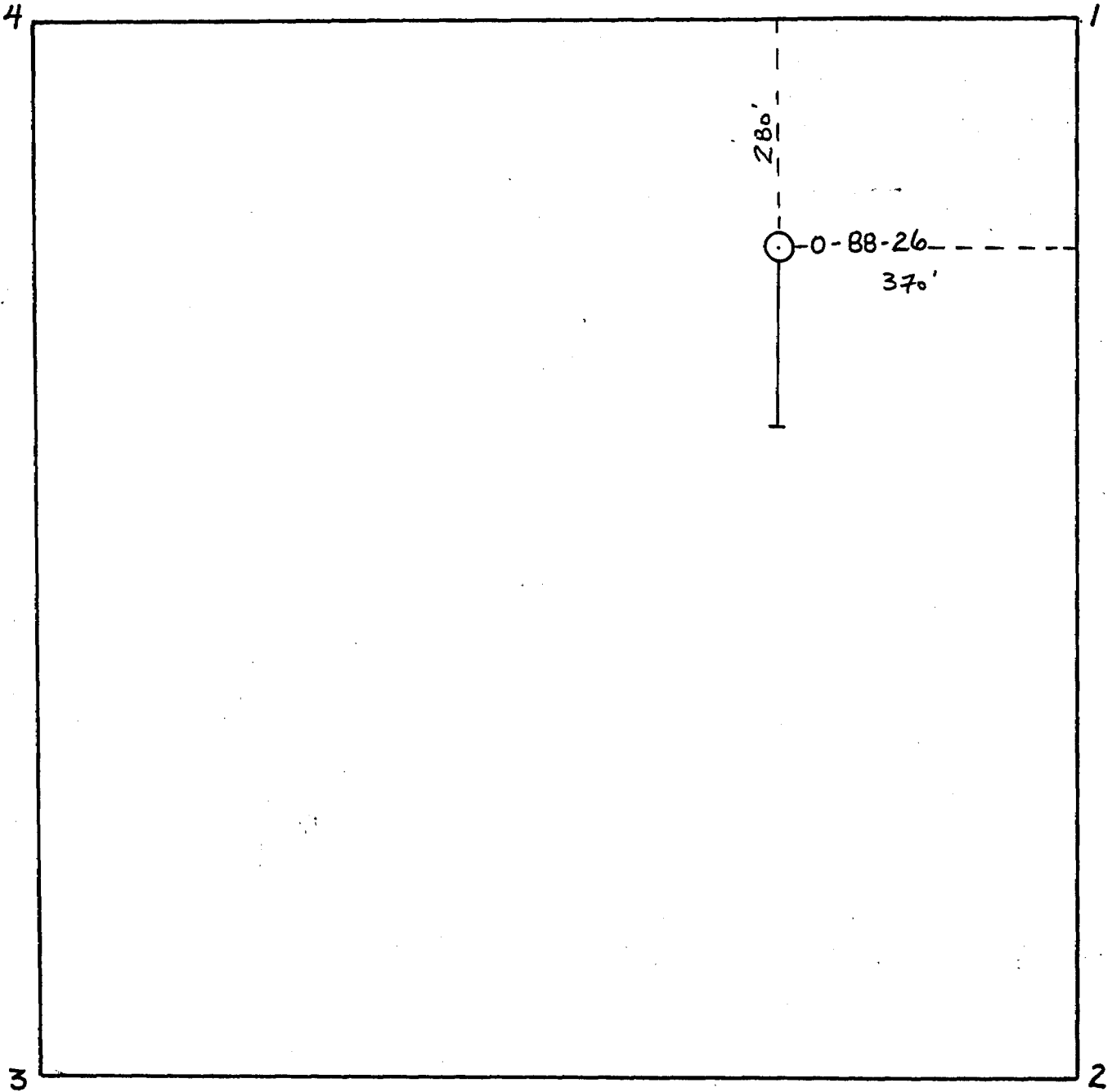
ONTARIO GEOLOGICAL SURVEY
ASSESSMENT FILES
OFFICE
MAR 27 1990
RECEIVED

Lat.	Elev.	Dip	Collared	Logged by: <u>George Giga</u>
Dep.	Depth	Bearing	Completed	

Footage	Rec'y	Rock Type/Alteration	Graphic Log	Mineralization/Structure	% Sulfides	Sample No.	Lt.	ASSAYS											
								Au/ton	Wgt/avg.										
203.2- 215.5		Mafic Volc. Similar to 10-58.5																	
207- 209		Similar to 10-58.5				4644	2					tr.							
215.5-		Silicifite																	
281.5- 215.5-		Similar to 66-68 Similar to 66-68				4645	3					tr.							
218.5- 218.5-																			
221.5-		Similar to 66-68				4646	3					tr.							
221.5- 224.5		Similar to 66-68				4647	3					tr.							
224.5- 227.5		Similar to 66-68				4648	3					tr.							
227.5- 230.5		Similar to 66-68				4649	3					tr.							
230.5- 233.5		Similar to 66-68				4650	3					tr.							
233.5- 236.5		Similar to 66-68				4651	3					tr.							
236.5- 239.5		Similar to 66-68				4652	3					tr.							
239.5- 242.5		Similar to 66-68				4653	3					tr.							
242.5- 245.5		Similar to 66-68				4654	3					tr.							
245.5- 246.5		Similar to 66-68				4655	3					tr.							
248.5- 251.5		1.5" irreg. qtz carb. vn with minor ch.				4656	3					tr.							
251.5- 254.5		Similar to 66-68				4657	3					tr.							
254.5- 257.5		Similar to 66-68				4658	3					tr.							

Blot Harbour

CLAIM NUMBER SSM 946956



SCALE: 1" = 200'

Relief Harbour

Lat.	Elev.	Dip	Collared
		-45°	May 18, 1988
Dep.	Depth	Bearing	Completed
	300'	180°	May 19, 1988

Logged by: George Giga

ASSAYS

Footage	Rec'y	Rock Type/Alteration	Graphic Log	Mineralization/Structure	% Sulfides	Sample No.	Lt.	Au oz/ton Wgt. Avg.								
0-5		Casing														
5-78		Mafic Volc. grn, f gr, silicified, foliated, carbonate, chl. ser. bearing with freg. irreg. qtz carb. stringers Presence of minor Py <1% Foliation range from 50°-70° avg 60° to CA														
12-14		Similar to 5-78				4669		tr.								
17-18		2" qv white, massive, chl. bearing with minor Py <1%				4670		tr.								
22-24		Similar to 5-78				4671		tr.								
32-34		Similar to 5-78				4672		tr.								
42-44		Similar to 5-78				4673		tr.								
52-54		Similar to 5-78				4674		tr.								
56.5-57.5		1" qv with Py stringers <1-30% along section				4675		tr.								
60-62.5		Irreg. qv assoc. with Py stringers <1-30%				4676		tr.								
73.2-75.5		Irreg. qtz chl. vn with minor Py stringers <1-10%				4677		tr.								
78-96		Gabbro grn, med. gr, carbonate, chl. bearing with infreg. qtz-carb. stringers. Presence of Py <1%														
82-84		Similar to 78-96				4678		tr.								
92-94		Similar to 78-96				4679		tr.								
96-166		Mafic Volc. Similar to 5-78														

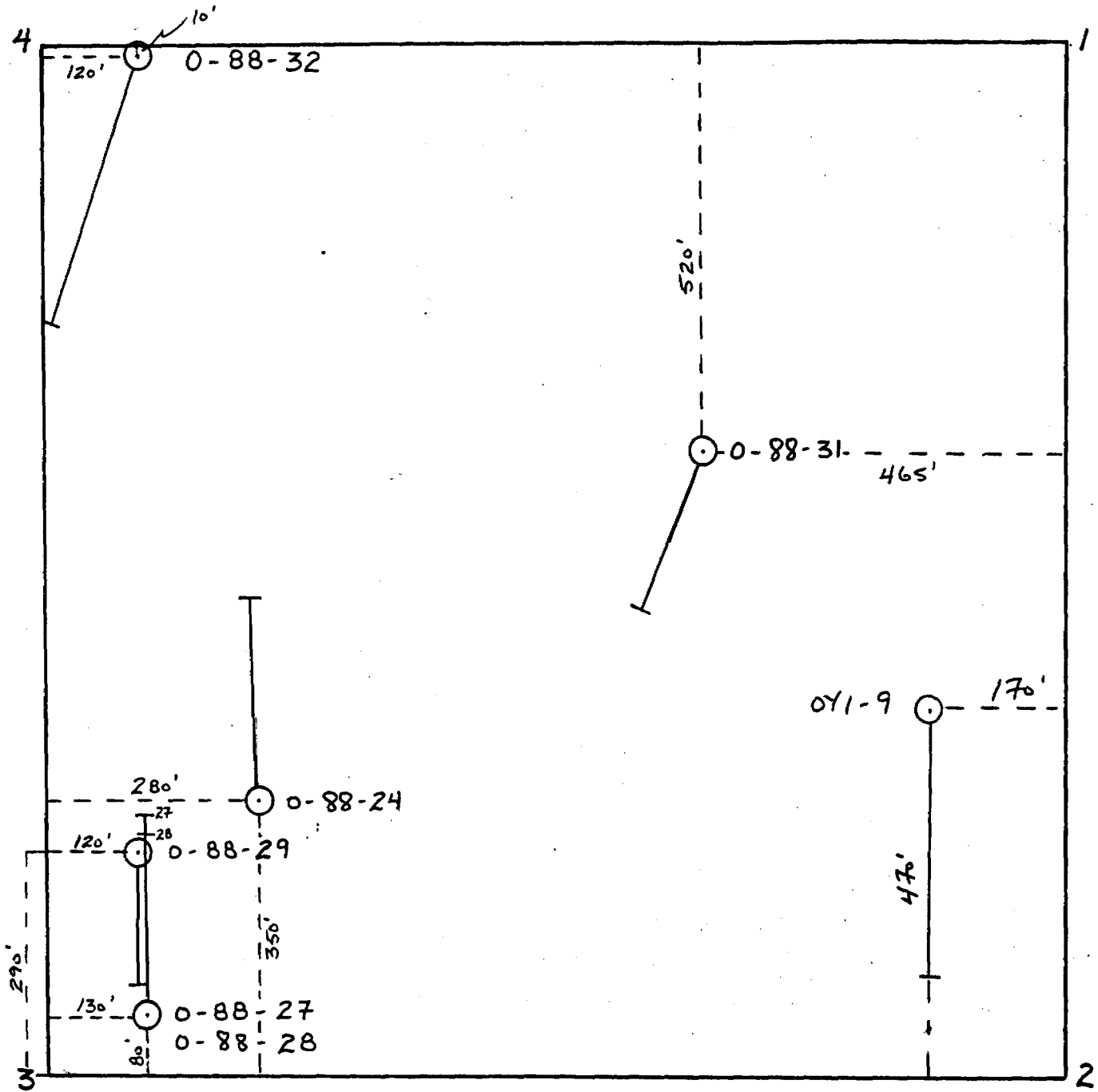
ONTARIO GEOLOGICAL SURVEY
 ASSESSMENT FILES
 OFFICE

 MAR 27 1990

 RECEIVED

Bait Harbour

CLAIM NUMBER SSM 894401



SCALE: 1" = 200'

Selat Harbour

Lat.	Elev.	Dip	-45°	Collared	May 20, 1988
Dep.	Depth	Bearing	360°	Completed	May 22, 1988

Logged by: George Giga & F Pezzutto

ASSAYS

Footage	Rec'y	Rock Type/Alteration	Graphic Log	Mineralization/Structure	% Sulfides	Sample No.	Lt.	Au oz/ton						
								Wat.	Avg.					
0-20		Casing												
20-37		Broken core												
37-72		Gabbro grn(med. gr., equigranular, chl and feld bearing with frag. irreg. qtz-carb. stringers. Presence of Py <1%												
39.5-40.5		2" gv				4703	1	0.003						
42-44		Similar to 37-72				4704	2	0.009						
52-54		Similar to 37-72				4705	2	tr.						
62-64		Similar to 37-72				4706	2	tr.						
72-255.2		Mafic Volc. (metavolc.)												
		d. grn to grey, f gr., schistose with minor stringers and vns of qtz, celcrite and chl. item present locally Present of minor Py <1% The major alteration mineral is chl.		Foliation 30-50° and avg 40° to CA										
72-74		Similar to 72-255.2				4707	2	tr.						
82-84		Similar to 72-255.2				4708	2	tr.						
92-94		Similar to 72-255.2				4709	2	tr.						
102-104		Similar to 72-255.2				4710	2	tr.						
112-114		Similar to 72-255.2				4711	2	tr.						
122-124		Similar to 72-255.2				4712	2	tr.						
133.9-134.9		1" quartz carb. chl. vn												
142-144		Similar to 72-255.2												

ONTARIO GEOLOGICAL SURVEY
 ASSESSMENT FILES
 OFFICE
 MAR 27 1990
 RECEIVED

Lat.	Elev.	Dip	Collared	Logged by: George Giga & F. Pennutte	
Dep.	Depth	Bearing	Completed	ASSAYS	

Footage	Rec'y	Rock Type/Alteration	Graphic Log	Mineralization/Structure	% Sulfides	Sample No.	Lt.	Au oz/ton									
								Wgt.	Avg.								
305.7-		Similar to 258.9-365															
307.7-						4747	2		tr.								
307.7-																	
309.7-						4748	2		tr.								
309.7-																	
311.7-						4749	2		tr.								
311.7-																	
313.7-						4750	2		tr.								
313.7-																	
315.7-						4801	2		tr.								
315.7-																	
317.7-						4802	2		tr.								
317.7-																	
319.7-						4803	2		tr.								
319.7-																	
321.7-						4804	2		tr.								
321.7-																	
323.7-						4805	2		tr.								
323.7-																	
325.7-						4806	2		tr.								
325.7-																	
327.7-						4807	2		tr.								
327.7-																	
329.7-						4808	2		tr.								
329.7-																	
331.7-						4809	2		tr.								
331.7-																	
333.7-						4810	2		tr.								
333.7-																	
335.7-						4811	2		tr.								
335.7-																	
337.7-						4812	2		tr.								
337.7-																	
339.7-						4813	2		tr.								
339.7-																	
341.7-						4814	2		tr.								
341.7-																	
343.7-						4815	2		tr.								

Plot Harbour

Property *Maple Lake*

Lat.	Elev.	Dip	-65°	Collared	May 22, 1988	Core Size:	BQ	Logged by:	George Giga & F. Pezzutto
Dep.	Depth	Bearing	360	Completed	May 24, 1988	ASSAYS			

Footage	Rec'y	Rock Type/Alteration	Graphic Log	Mineralization/Structure	% Sulfides	Sample No.	Lt.	Au oz/ton	Ngt.	Avg.
0-20		Casing								
20-28		Broken Core								
28-62		Mafic Volcanics Dark green to black, fine to med. grained, slightly foliated mafic volcanic-mostly metabasalt with lesser amount of qtz diabase		Foliation 5° to CA Ranges from 1-8°						
		Stringers of glassy and milky qtz (mm in width). Also calcite, kspar stringers chlorite is major alteration mineral. Pyrite approx equal to 1%								
32-34		Similar to 28-62'				04832	2	tr.		
42-44		Similar to 28-62'				04833	2	tr.		
52-54		Similar to 28-62'				04834	2	tr.		
62-243.5		Mafic to intermediate Flows and Hypabyssal Py. Green to dark gray, fine to med. grained, foliated mafics with local coarser-grained sections of leucogabbro-mafic diorite. Also present are 1-8 cm qtz veins, chl. k-spar also present in vein-		Foliation 5° to CA						
62-64		lets sulphides (pyrite) < 1%								
72-74		Similar to 62-243.5				04835	2	tr.		
76-7-		Similar to 62-243.5		Py <1%		04836	2	tr.		
77.7		3" qtz-carb-chl. vein		Py <1%		04837	1	tr.		
79.8-		1" qtz-carb-chlorite vein		Py <1%		04838	1	tr.		
82-84		Similar to 62-243.5				04839	2	tr.		
92-94		Similar to 62-243.5				04840	2	tr.		

ONTARIO GEOLOGICAL SURVEY
 ASSESSMENT FILES
 OFFICE
 MAR 27 1990
 RECEIVED

Lat.	Elev.	Dip	Collared	Logged by: <u>George Giga & F. Pezzutto</u>
------	-------	-----	----------	---

Dep.	Depth	Bearing	Completed	ASSAYS
------	-------	---------	-----------	--------

Footage	Rec'y	Rock Type/Alteration	Graphic Log	Mineralization/Structure	% Sulfides	Sample No.	Lt.	Au oz/ton								
								Wat.	Avg.							
102-104		Similar to 62-243.5				04841	2			tr.						
112-114		Similar to 62-243.5				04842	2			tr.						
115.5-116.5		Irreg. 3" qtz, carb.-chl. vein		Py <1%		04843	1			tr.						
122-124		Similar to 62-243.5				04844	2			tr.						
132-134		Similar to 62-243.5				04845	2			tr.						
142-144		Similar to 62-243.5				04846	2			tr.						
152-154		Similar to 62-243.5				04847	2			tr.						
162-164		Similar to 62-243.5				04848	2			tr.						
172-174		Similar to 62-243.5				04849	2			tr.						
182-184		Similar to 62-243.5				04850	2			tr.						
192-194		Similar to 62-243.5				04751	2			tr.						
202-204		Similar to 62-243.5				04752	2			tr.						
212-214		Similar to 62-243.5				04753	2			tr.						
222-224		Similar to 62-243.5				04754	2			tr.						
232-234		Similar to 62-243.5				04755	2			tr.						
242-243.5		Similar to 62-243.5				04756	1.5			tr.						
243.5-261.5		Shear zone #1		Foliation 0-5% and is usually												

Lat.	Elev.	Dip	Collared	Logged by: George Giga & F. Pezzutto
------	-------	-----	----------	--------------------------------------

Dep.	Depth	Bearing	Completed	ASSAYS
------	-------	---------	-----------	--------

Footage	Rec'y	Rock Type/Alteration	Graphic Log	Mineralization/Structure	% Sulfides	Sample No.	Lt.	Au oz/ton								
								Wat.	Avg.							
259.5-																
261.5		Similar to 261.5-319				04765	2			tr.						
262-																
264		Similar to 261.5-319				04766	2			tr.						
272-																
274		Similar to 261.5-319				04767	2			tr.						
282-																
284		Similar to 261.5-319				04768	2			tr.						
292-		Similar to 261.5-319				04769	2			tr.						
294																
302-																
304		Similar to 261.5-319				04770	2			tr.						
312-																
314		Similar to 251.5-319				04771	2			tr.						
319-																
337		Lost														
337-		Shear Zone #2														
370.6		Lt green to black highly sheared foliated rock w/ breccia zones chlorite and sericite are abundant as are qtz vein up to 1 cm in width. Calcite and k-spar stringers common. Py in the														
337-339		breccia zone averaged 15% Similar to 337-370.6 (breccia zone w/sulphides)														
339-		Similar to 337-370.6				04772	2			tr.						
341-																
343		Similar to 337-370.6				04773	2			tr.						
343-																
345		Similar to 337-370.6				04774	2			tr.						
345-																
347		Similar to 337-370.6				04776	2			tr.						
347-																
349		Similar to 337-370.6				04777	2			tr.						
349-																
351		Similar to 337-370.6				04778	2			tr.						

Lat.		Elev.		Dip		Collared		Logged by: George Giga-F. Pezzutto									
Dep.		Depth		Bearing		Completed		ASSAYS									
Footage	Rec'y	Rock Type/Alteration		Graphic Log	Mineralization/Structure		% Sulfides	Sample No.	Lt.	Au oz/ton							
										Wgt.	Avg.						
409.6-		Breccia w/qtz veins			Py 2%			04793	1.4		tr.						
411-		Breccia w/qtz veins			Py <1%			04794	2		tr.						
413-		Breccia w/qtz veins			Py <1%			04794	2		tr.						
432		Slightly schistose mafic vol. dark green, schistose, chl. rich, fine grained mafic flows with abundant 1-3 cm qtz and carbonate stringers sulphides <1%			Py <1%			04795	2		tr.						
422-		Qtz vein (3")			Py <1%			04796	2		tr.						
424		Qtz vein (3")			Py <1%			04796	2		tr.						
429-		Similar to 413-432															
431		Similar to 413-432															
432-537		Schistose & brec. mafic volcanics dark green to dark grey, fine to medium grained chl-rich mafics. Rx is slightly foliated and brecciated. Present are numerous irregular qtz veins (1 mm to 2 cm in width), as well as stringers of calcite, hematite, k-spar and sericite, sulphides are rare approx. equal to 1%			Foliation												
433-435		Similar to 432-537						04797	2		tr.						
444-446		Similar to 432-537						04798	2		tr.						
455-457		Similar to 432-537						04799	2		tr.						
465-		Similar to 432-537															
467		Similar to 432-537						04800	2		tr.						
467-		Similar to 432-537															
469		Similar to 432-537						09951	2		tr.						
469-		Similar to 432-537															
471		Similar to 432-537						09952	2		tr.						

Old Hand

Location 15+15N 31+45E

Project No. N.T.S.

Core Size: B0

Lat. Elev. Dip -50° Collared May 25, 1988

Logged by: F. Pezzutto

Dep. Depth 252' Bearing 180° Completed May 26, 1988

ASSAYS

Footage	Rec'y	Rock Type/Alteration	Graphic Log	Mineralization/Structure	% Sulfides	Sample No.	Lt.	Au									
0-7.5 7.5-14.0		Casing Mafic Diorite, dark grey, med. grained, equigranular minor qtz stringers. chl-rich sulphides <1%															
14.0-15.0 15-18.5		Mud Seam Mafic Diorite (Similar to 7.5-11')				09962	14 15	1	Tr.								
18.5-20		Serpentinized intermediate olive green, serpentine & epidote rich rock with qtz and feldspar phenocrysts		Foliation approx. equal to 50° to CA		09963	19 21	2	Tr.								
20-22 22-23		Mafic Diorite (similar to 7.5-14) Serpentinized intermediate similar to 18.5-20'. No sulphides															
23-92		Gabbro Dark green to almost black chl-rich, qtz poor, medium grained sulphides <1%				09964	29 31 40	2	Tr.								
						09965	42	2	Tr.								
						09966	50 52	2	Tr.								
						09967	60 62	2	Tr.								
						09968	70 72	2	Tr.								
						09969	80 82	2	Tr.								
						09970	90 92	2	Tr.								
92-104		Intermediate Flows, olive green, slightly foliated and altered flows. Fine grained Epidote and serpentine common. K-spar, qtz and calcite veins 0.5 to 3 cm thick common. Pyrite <1%				09971	93 95	2	Tr.								
						09972	102 103	5	1.5	Tr.							

ONTARIO GEOLOGICAL SURVEY
ASSESSMENT FILES
OFFICE
MAR 27 1990
RECEIVED

ONEIDA RESOURCES INC.
Location 15+15N 31+45E

Property Oneida - Maple Lake

Sheet No. 2 of 4 Hole No. O-88-29

Project No. N.T.S.

Core Size: BQ

Lat. Elev. Dip -50°

Collared May 25/88

Logged by: F. Pezzutto

Dep. Depth 252" Bearing 180°

Completed May 26/88

ASSAYS

Footage	Rec'y	Rock Type/Alteration	Graphic Log	Mineralization/Structure	% Sulfides	Sample No.	Lt.	Au							
104 - 108		Diabase Dark Green to Black, foliated, minor quartz + calcite veinlets 1 to 3 mm		Foliation approx. equal to 45° to CA											
		sulphides < 1%													
108 - 112		Mafic K-Spar eyed volcanic dark green, k-spar and albite eyes 1-4 mm. Pyrite				09973	109.5 111.5	2	Tr.						
		stringers up to 5% of rock													
112 - 148.5		Shear Zone Dark green, fine grained mafic volcanic, rich in		Foliation approx. equal to 45-55° to CA		09974	112	2	Tr.						
		chlorite. Shearing common, as is breccia with 1-5 cm wide Quartz, K-spar, chlorite, carb. filling.				09975	114	2	Tr.						
						09976	116	2	Tr.						
		Pyrite up to 5%				09977	120	2	Tr.						
						09978	122 127.5 129.5	2	Tr.						
						09979	133	2	Tr.						
						09980	135 137	2	Tr.						
						09981	137	2	Tr.						
						09982	139 142 144	2	Tr.						
						09983	145 147	2	Tr.						

ONEIDA RESOURCES INC.

Property Oneida - Maple Lake

Sheet No. 3 of 4 Hole No. 0-88-29

Location 15+15N 31+45E

Project No. N.T.S.

Core Size: BQ

Lat. Elev. Dip -50°

Collared May 25/88

Logged by: F. Pezzutto

Dep. Depth 252' Bearing 180

Completed May 26/88

ASSAYS

Footage	Rec'y	Rock Type/Alteration	Graphic Log	Mineralization/Structure	% Sulfides	Sample No.	Lt.		Au						
148.5-183.5		Mafic Volcanics Dark Grey, fine grained, foliated, slightly sheared, chlorite - rich. Quartz,		Foliation 45° to CA.		09984	147 149	2	Tr.						
						09985	152 154	2	Tr.						
		K-Spar, carb. and hematite fracture filling(1-3 cm veins) sulphides locally present 1-3°				09986	162 164	2	Tr.						
						09987	167	2	Tr.						
						09988	169 170 172	2	Tr.						
183.5-193		Fractured and Sheared Mafic volcanic.		Foliation 45° to CA.		09989	177 179	2	Tr.						
						09990	183.5	2	Tr.						
		Rocks much like above except for numerous Quartz, carb., k-spar and hematite veinlets on a mm scale. Sulphides				09991	185.5 187.5	2	Tr.						
		in veins 1-2%				09992	187.5	2	Tr.						
						09993	189.5 191.5	2	Tr.						
193 - 199.5		Mafic Volcanics Much like 148.5 to 183.5				09994	191.5 193.5	2	Tr.						
199.5-224.5		Gabbro - Leucogabbro Med. grained, dark green to black, equigranular with diabase section. Quartz veins rare. Mottled patches of plagioclase. Sulphides				09995	201 203	2	Tr.						
						09996	211 213	2	Tr.						

Lat. Elev. Dip -45° Collared May 27, 1988

Logged by: F. Pezzutto

Dep. Depth 302' Bearing 360-180° Completed May 28, 1988

ASSAYS

Footage	Rec'y	Rock Type/Alteration	Graphic Log	Mineralization/Structure	% Sulfides	Sample No.	Lt.	Au							
								oz/ton							
0 - 24.6		Casing													
24.6 - 28.6		Broken Core													
28.6 - 32.0		Intermediate Volcanic Green to grey, fine grained chlorite rich, slightly foliated and altered.		Foliated angle to C. A. approx. equal to 65°		04801	30 32	2	tr.						
32 - 88.7		Sulphide < 1% (as Pyrite). Minor carb. veinlets 1-2 mm Cataclasized Volcanics Green to dark grey chlorite													
		- rich fine grained cataclasized and recrystallized intermediate volcanics with a few sections which look like med. grained Diabase or Mafic Diorite. Minor Quartz veins, minor K-Spar and Plagioclase stringers and blebs. Sulphides < 1%; as Pyrite.		Foliation angle to CA approx. equal to 55-65°		04802	32 34	2	tr.						
						04803	42 44	2	tr.						
						04804	47 49	2	tr.						
						04805	57	2	tr.						
							59								
						04806	61 63	2	tr.						
						04807	67 69	2	tr.						
						04808	72 74	2	tr.						
						04809	78 80	2	tr.						

ONTARIO GEOLOGICAL SURVEY
ASSESSMENT FILES
OFFICE

MAR 27 1990

RECEIVED

Project No.

N.T.S.

Core Size: BQ

Lat.

Elev.

Dip -45°

Collared May 27, 1988

Logged by: F. Pezzutto

Dep.

Depth

Bearing 360-180°

Completed May 28, 1988

ASSAYS

Footage	Rec'y	Rock Type/Alteration	Graphic Log	Mineralization/Structure	% Sulfides	Sample No.	Lt.	Au oz/ton								
161.5-185		MAFIC VOLCANIC Dark green to black, fine grained, slightly schistose mafic volcanic. Local 1 cm quartz veins. Local carb. and chlorite stringers. Sulphides 1-2% (Pyrite) in quartz veins.		Foliation angle to CA approx. equal to 70-78°		04825	140	tr.								
								04826	142	tr.						
									145	tr.						
									147	tr.						
									04827	148	tr.					
										150	tr.					
									04828	150	tr.					
										152	tr.					
									04829	155	tr.					
							157	tr.								
						04830	160	tr.								
							162	tr.								
						04831	162	tr.								
							164	tr.								
						04832	168	tr.								
							170	tr.								
						04833	172	tr.								
							174	tr.								
						04834	177	tr.								
							179	tr.								
						04835	179	tr.								
							181	tr.								
						04836	181	tr.								
							183	tr.								
185.0-190.2		QUARTZ VEINS Series of quartz veins (2½", 20" and 12" respect.) Clear to milky, sulphide poor				04837	185	tr.								
							187	tr.								
							04838	188	tr.							
							190	tr.								

Project No. N.T.S.

Core Size: BQ

Lat. Elev. Dip -45° Collared May 27, 1988

Logged by: F. Pezzutto

Dep. Depth Bearing 360-180° Completed May 28, 1988

ASSAYS

Footage	Rec'y	Rock Type/Alteration	Graphic Log	Mineralization/Structure	% Sulfides	Sample No.	Lt.	ASSAYS					
								Au	Cu	Zn			
								oz/ton					
190.2- 213.2		INTERMEDIATE MAFIC VOLCANIC Green to green-grey, fine grained, chlorite rich volcanics. Local chlorite and pyroxene - epidote rich sections 1-4 cm wide. Well foliated. Quartz veins 1-4 cm wide common, minor carb-sericite and plag.		Foliation angle to CA approx. equal to 77°		04839	190 192	2	tr.				
		veinlets. Sulphides 1-4% in stringers. Usually pyrite and pyrrhotite with minor chalcocopyrite.				04840 04841	195 197 197 199	2 2	tr. tr.				
						04842	207 209	2	tr.				
213.2- 255.5		DIABASE Olive green, dark green, med. grained, chlorite rich and foliated diabase. Sections are slightly sheared with biotite, sericite and quartz veins (1-3 cm wide). Sulphides common (1-2%), but more abundant in 1-2 cm wide stringers.		Foliation angle to CA = 75°		04843	213 215	2	tr.				
						04844 04845	215 217 217 219	2 2	tr. tr.	0.118% 0.012%	0.079 0.022		
						04846 04847	222 224 227 229	2 2	tr. tr.				
						04848 04849	233.5 235.5 245 247	2 2	tr. tr.				
						04850	253.5 255.5	2	tr.				

Silet Harbour

Project No.

N.T.S.

Core Size: BQ

Lat.

Elev.

Dip

-45

Collared May 29, 1988

Logged by: F. Pezzutto

Dep.

Depth

302'

Bearing

360-180

Completed May 30, 1988

ASSAYS

Footage	Rec'y	Rock Type/Alteration	Graphic Log	Mineralization/Structure	% Sulfides	Sample No.	Lt.	Au									
0 - 4.5		Casing															
4.5 - 5.5		Porphyritic Tonalite Coarse grained (porphyritic)															
5.5 - 54.5		with large 2 cm phenocrysts of K-Spar and plag. Slightly foliated. Sulphides <1%. Porphyritic Intermediate Volcanic.															
		Light grey to dark grey, fine grained with phenocrysts to 0.5 cm, chlorite - rich, slightly foliated. Minor quartz and carb. veins (1-3 cm), with 1% pyrite and minor chalcopyrite. Also present are carb. and K-Spar stringers on a mm scale.		Foliation angle to CA = 55°		04860	12	Tr.									
						04861	20	Tr.									
						04862	25	Tr.									
						04863	29	Tr.									
		Local shearing and brecciation (33-37') with red and white chalcedony and minor hematite. Sulphides in sheared zone - 1-2% as Py. and Cp. Cumulative texture in some places.				04864	33	Tr.									
						04865	35	Tr.									
						04866	37	Tr.									
						04867	45	Tr.									
						04868	52	Tr.									
54.5 - 56		Intermediate-Mafic Volcanic Dark green to dark grey, fine grained, chlorite - rich, sulphides 1%. Minor		Foliation angle to CA = 50°													

ONTARIO GEOLOGICAL SURVEY
ASSESSMENT FILES
OFFICE

MAR 27 1990

RECEIVED

Pilot Hole

Lat. 8 + 50 NW	Elev.	Dip -45°	Collared June 1, 1988
Dep. 0 + 80 SW	Depth 502'	Bearing 200°	Completed June 3, 1988

Logged by: F. Pezzutto and George Giga

ASSAYS

Footage	Rec'y	Rock Type/Alteration	Graphic Log	Mineralization/Structure	% Sulfides	Sample No.	Lt.	Au								
0 - 2		Casing														
2 - 27		Intermediate - Mafic Volcanic Dark green to grey, chlorite		Foliation angle to CA = 48°		4916	10	Tr.								
		rich, foliated & distinct bands of quartz carbonate K-spar and hematite (0.2 - 1 cm wide). Most veins parallel to foliation but some have irregular orientation. Minor shearing and brecciation. Sulphides 1% but up to 3% locally (Py) in quartz - carb. stringers				4917	12	Tr.								
						4918	15	Tr.								
							17	Tr.								
							18	Tr.								
							20									
27 - 32		Shear Zone and Breccia Highly sheared, brecciated, cataclasized zone & abundant carbonate, chlorite, chlorite		Sulphide poor < 1%		4919	27	Tr.								
		and blood red hematite? Hematite clay.					29									
						4920	29	Tr.								
32 - 38		Intermediate - Mafic Volcanic					31									
		Much like (2-27') except these rocks are not as sheared but more coarse grained due to minor recrystallization.		Foliation angle to CA approx 45°												
38 - 93.7		Intermediate - Mafic Volcanic Recrystallized and schistose		Sulfides poor & 1% at		4921	40	Tr.								
		fine grained, chlorite rich & alternate sections med. grained and porphyroblasts of chlorite, pyrite and albite. Some of med.		commonly concentrated to 6% parallel to veins. Foliation angle to CA = 45°		4922	42	Tr.								
							44									
							45.5									

ONTARIO GEOLOGICAL SURVEY
ASSESSMENT FILES
OFFICE

MAR 27 1990

Project No. N.T.S.

Core Size: BQ

Lat. 8 + 50 NW

Elev..

Dip -45°

Collared June 1, 1988

Logged by: F. Pezzutto and G. Giga

Dep. 0 + 80 SW

Depth 502'

Bearing 200°

Completed June 3, 1988

ASSAYS

Footage	Rec'y	Rock Type/Alteration	Graphic Log	Mineralization/Structure	% Sulfides	Sample No.	Lt.	Au							
		grain sections resembles mafic diorite. Some shearing and brecciation present locally. White quartz veins present and range from				4923	45.5	Tr.							
		3-25 cm, usually associated with carb., K-Spar and hematite.				4924	47.5	Tr.							
						4925	55.5	Tr.							
						4926	65.67	Tr.							
						4927	74.76	Tr.							
						4928	76.78	Tr.							
						4929	83.85	Tr.							
						4930	88.90	Tr.							
93.7-108.2		<u>Shear Zone</u> Medium grained (recrystallized) mafic volcanic ? sections that are heavily		Angle of foliation to CA = 63°		4931	93.5 95.5	Tr.							
		sheared, brecciated, and cataclasized. Rocks have a banded appearance due to concentration of chlorite, hematite, minor red chalc				4932	97.99	Tr.							
		dony, carbonate and K-Spar. Some of quartz veins are up to 12 cm with 1-2% Py.				4933	102.104	Tr.							
						4934	104.106	Tr.							
						4935	106.108.2	Tr.							
108.2-121		<u>Intermediate - Mafic Volcanic</u> Similar to 2-27'				4936	117.119	Tr.							

Project No.

N.T.S.

Core Size:

BO

Lat. 8 + 50 NW

Elev..

Dip -45°

Collared June 1, 1988

Logged by: F. Pezzutto & G. Giga

Dep. 0 + 80 SW

Depth 502'

Bearing 200°

Completed June 3, 1988

ASSAYS

Footage	Rec'y	Rock Type/Alteration	Graphic Log	Mineralization/Structure	% Sulfides	Sample No.	Lt.	Au							
						4214	267 269	Tr.							
						4215	277	Tr.							
							279								
						4216	282.8 283.8	Tr.							
						4217	287 289	Tr.							
						4218	294.9 296.9	Tr.							
						4219	297 299	Tr.							
						4220	307 309	Tr.							
						4221	317 319	Tr.							
						4222	327	Tr.							
							329								
						4223	337 339	Tr.							
						4224	347 349	Tr.							
						4225	357 359	Tr.							
						4226	367 369	Tr.							
						4227	377 379	Tr.							

Project No.

N.T.S.

Core Size: BQ

Lat. 8 + 50 NW

Elev..

Dip -45°

Collared Junel, 1988

Logged by: F. Pezzutto & G. Giga

Dep. 0 + 80 SW

Depth 502'

Bearing 200°

Completed

ASSAYS

Footage	Rec'y	Rock Type/Alteration	Graphic Log	Mineralization/Structure	% Sulfides	Sample No.	Lt.	Au							
						4228	387	Tr.							
						4229	389 397 399	Tr.							
401.8- 405.3		<u>Felsic - Intermediate Volcanic</u> White-grey, fine grained, chlorite bearing, highly silicified rock.		Sulphide poor < 1% Py.		4230	401.8 403.8	Tr.							
405.3- 502		<u>Intermediate - Mafic Volcanic</u>				4231	403.8 405.3	Tr.							
		Similar to 2-27				4232	407 409	Tr.							
						4233	417	Tr.							
						4234	419 427 429	Tr.							
						4235	437	Tr.							
						4236	439 447 449	Tr.							
						4237	457 459	Tr.							
						4238	467	Tr.							
						4239	469 477 479	Tr.							

Bulet Harbour

Lat.	Elev..	Dip	-45°	Collared	June 4, 1988	Core Size:	BQ	Logged by:	G. Giga
Dep.	Depth	501'	Bearing	360°	Completed	June 11, 1988	ASSAYS		

Footage	Rec'y	Rock Type/Alteration	Graphic Log	Mineralization/Structure	% Sulfides	Sample No.	Lt.	Au							
0 - 10.5		Casing													
10.5-67.5		<u>INTERMEDIATE MAFIC META-VOLCANIC</u>													
		Green, fine grained, sheared, occasionally recrystallized? porphyroblastic k-spar/plag, chlorite, sericite bearing,		Presence of sulfides <1% Py. Cp. Foliation range from 40-60°, avg. 50° to CA		4242	17	Tr.							
						4243	27	Tr.							
		infrequent biotite, seen having a preferred orientation. Infrequent occurrence of irregular quartz-carb-hematite stringers throughout section				4244	37	Tr.							
						4245	47	Tr.							
							49								
67.5-71.8		<u>INTERMEDIATE MAFIC META-VOLCANIC</u>				4246	57	Tr.							
							59								
		Light green altered variety of 10.5-67.5				4247	67.5	Tr.							
							69.5								
						4248	69.5	Tr.							
							71.8								
71.8-81.5		<u>INTERMEDIATE MAFIC META-VOLCANIC</u> Similar to 10.5-67.5.													
81.5-86.4		<u>INTERMEDIATE MAFIC META-VOLCANIC</u> Similar to 67.5-71.8				4249	81.5	Tr.							
							83.5								
						4250	83.5	Tr.							
							86.4								

ONTARIO GEOLOGICAL SURVEY
 ASSESSMENT FILES
 OFFICE
 MAR 27 1990
 RECEIVED

Project No.

N.T.S.

Core Size:

BQ.

Lat.

Elev..

Dip

-45°

Collared June 4, 1988

Logged by:

G. Giga

Dep.

Depth 501'

Bearing

360°

Completed June 11, 1988

ASSAYS

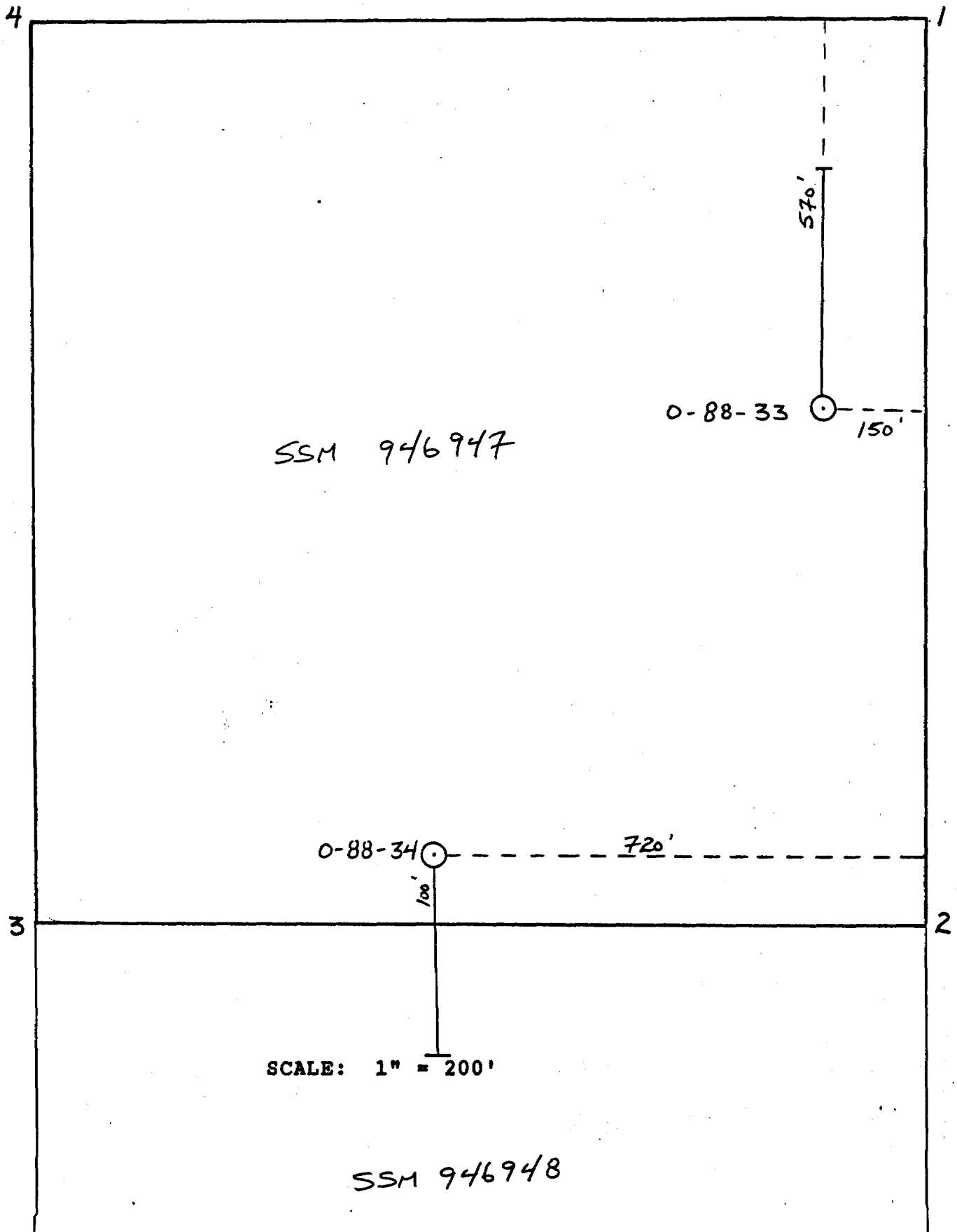
Footage	Rec'y	Rock Type/Alteration	Graphic Log	Mineralization/Structure	% Sulfides	Sample No.	Lt.	Au									
						4277	357 359	Tr.									
						4278	367 369	Tr.									
						4279	377 379	Tr.									
						4280	387 389	Tr.									
						4281	397 399	Tr.									
						4282	407 409	Tr.									
						4283	417 419	Tr.									
						4284	427 429	Tr.									
						4285	437 439	Tr.									
						4286	447 449	Tr.									
						4287	457 459	Tr.									
						4288	467 469	Tr.									
						4289	476.3 477.3	Tr.									
						4290	487 489	Tr.									
						4291	497 499	Tr.									

501

END OF HOLE

Pilot Harbour

CLAIM NUMBER SSM 946947



Pilot Harbour

Project No.

N.T.S.

Core Size: BQ

Lat. 24 + 00 E

Elev.

Dip 45°

Collared June 11, 1988

Logged by: G. Gida

Dep. 28 + 00 N

Depth 427'

Bearing 180°

Completed June 13, 1988

ASSAYS

Footage	Rec'y	Rock Type/Alteration	Graphic Log	Mineralization/Structure	% Sulfides	Sample No.	Lt.	Au									
0 - 2		Casing															
2 - 97		<u>INTERMEDIATE-MAFIC META-VOLCANIC</u>															
		green, fine grained, sheared, chlorite, sericite bearing, with infrequent carb-quartz-hematite stringers.		Foliation range from 40°-60° avg. 60° to CA. Presence of sulfides < 1% Py.		4292	7	Tr.									
						4293	17 19	Tr.									
						4294	27 29	Tr.									
						4295	37 39	Tr.									
						4296	47 49	Tr.									
						4297	57 59	Tr.									
						4298	67 69	Tr.									
						4299	77 79	Tr.									
						4300	83 84	2 Tr.									
						48701	87 89	Tr.									
97 - 427		<u>INTERMEDIATE-MAFIC META-VOLCANIC</u> similar to 2-97 but appears recrystallized with porphyroblasts of chlorite, plag/k-spar ranging in size from < 1/16-1/8", avg. 1/8". Infrequent carb-quartz-hematite bearing stringers and veins present.		Presence of sulfides < 1% Py.		48702	97 99	Tr.									
						48703	101.9 102.9	Tr.									

ONTARIO GEOLOGICAL SURVEY
ASSESSMENT FILES
OFFICE
MAR 27 1990
RECEIVED

Project No. N.T.S.

Core Size: BQ

Lat. 31+00E, 17+00N

Elev..

Dip -45°

Collared May 15, 1988

Logged by: Frank Pezzutto

Dep.

Depth 501'

Bearing 180°

Completed May 17, 1988

ASSAYS

Footage	Rec'y	Rock Type/Alteration	Graphic Log	Mineralization/Structure	% Sulfides	Sample No.	Lt.	Au								
0 -		CASING														
38.7 -		BROKEN CORE														
38.7 -																
42.5 -																
42.5 -		Recrystallized Mafic				48851	42	Tr.								
132.4		Volcanics				48852	44									
		Fine to medium grained, dark green to dark grey, well foliated and recrystal-				48852	49	Tr.								
		lized. Chlorite and pyroxene rich. Irregular white or blue quartz veins with minor amounts of hematite, red				48853	58	Tr.								
						48854	60									
						48854	69	Tr.								
		chalcedony, carbonate as stringers. Quartz veins are 0.5 to 4 cm wide. Minor amethyst. Sulphides: <1% in core, but locally present				48855	71	5 Tr.								
						48855	73	5								
						48856	74	Tr.								
						48856	76									
		in percentages of 2-5				48857	84	Tr.								
		Angle of foliation to core axis: 68°				48857	86									
						48858	89	Tr.								
						48858	91									
						48859	97	Tr.								
						48859	99									
						48860	107	Tr.								
							109									
						48861	109	Tr.								
							111									
						48862	115	Tr.								
							117									
						48863	125	Tr.								
							127									

MINERALOGICAL SURVEY
 ASSESSMENT FILES
 OFFICE

 MAR 27 1990

 RECEIVED

Project No. N.T.S.

Core Size: BQ

Lat. 31+00E, 17+00N

Elev..

Dip -45°

Collared May 15, 1988

Logged by: Frank Pezzutto

Dep.

Depth 501'

Bearing 180°

Completed May 17, 1988

ASSAYS

Footage	Rec'y	Rock Type/Alteration	Graphic Log	Mineralization/Structure	% Sulfides	Sample No.	Lt.	Au							
132.4 - 145.6		<u>Recrystallized Mafic Volcanic with Quartz Veins.</u> Core much like 42.5-132.4 except for 8 distinct white				48864	132.5 134.5	Tr.							
		(milky) or clear quartz veins 1 to 2 cm wide. Contain 1-2% Py, and minor chalcopyrite. Hematite present locally.				48865	135.5 137.5	Tr.							
		Angle of foliation to CA = 68°				48866	139.5 141.5	Tr.							
						48867	142 143	Tr.							
						48868	145 147	Tr.							
145.6 - 166.7		<u>METADIABASE (RECRYSTALLIZED)</u> Medium to coarse grained, well foliated and slightly cataclasized, with chlorite				48869	149 151	Tr.							
		and pyroxene laths up to 2 cm long, mottled texture. Stringers of epidote locally, minor milky quartz veins (to 3 cm). Sulphides: 1% but 4% locally (pyrite).				48870	158	Tr.							
						48871	160 163 165	Tr.							
166.7 - 186.0		<u>MAFIC VOLCANICS AND QUARTZ VEINS</u> Fine to medium grained,				48872	166.5	Tr.							
		schistose chlorite-rich, with 3 quartz veins (3, 7, 63" wide). Rocks are distinctly banded due to chlorite and silica and minor sulphides (1-3%). Quartz veins are clear to milky and grey with 1-4% sulphides, Py. and chalcopyrite. Minor amounts of albite and hematite. < to				48873	168.5 171.5 173.5	Tr.							
						48874	177	Tr.							
						48875	179 181	Tr.							

foliation to CA = 64°

Project No. N.T.S.

Core Size: BQ

Lat. 31 + 00E. 17+00N

Elev..

Dip -45°

Collared May 15, 1988

Logged by: Frank Pezzutto

Dep.

Depth 501'

Bearing 180°

Completed May 17, 1988

ASSAYS

Footage	Rec'y	Rock Type/Alteration	Graphic Log	Mineralization/Structure	% Sulfides	Sample No.	Lt.	Au						
						48876	181	Tr.						
							183							
						48877	183	Tr.						
							185							
						48878	185	Tr.						
							187							
186.0 - 305.2		<u>FOLIATED INTERMEDIATE TO MAFIC VOLCANICS</u> Dark green to dark grey, distinctly foliated and occasionally banded, are to medium grained intermediate to mafic volcanics. Irregular carbonate, k-spar and hematite veins 2 mm - 2 cm wide. Present are 2-20 cm irregular quartz-hematite-albite veins with 1-3% pyrite and pyrrhotite. Sulphides also present as 0.5 cm to 4 cm subhedral grains with magnetite. Core becomes more mafic and porphyritic at depth. Angle of foliation to CA = 78°				48879	187 5	Tr.						
							189 5							
						48880	192 5	Tr.						
							194 5							
						48881	194 5	Tr.						
							196							
						48882	197	Tr.						
							199							
						48883	205	Tr.						
							207							
						48884	208	Tr.						
							210							
						48885	210	Tr.						
							212							
						48886	214	Tr.						
							216							
						48887	218	Tr.						
							220							
						48888	213	Tr.						
							215							
						48889	231	Tr.						
							233							

Project No.

N.T.S.

Core Size:

BQ

Lat. 31+00E, 17+00N

Elev..

Dip

-45°

Collared May 15, 1988

Logged by:

Frank Pezzutto

Dep.

Depth 501'

Bearing

180°

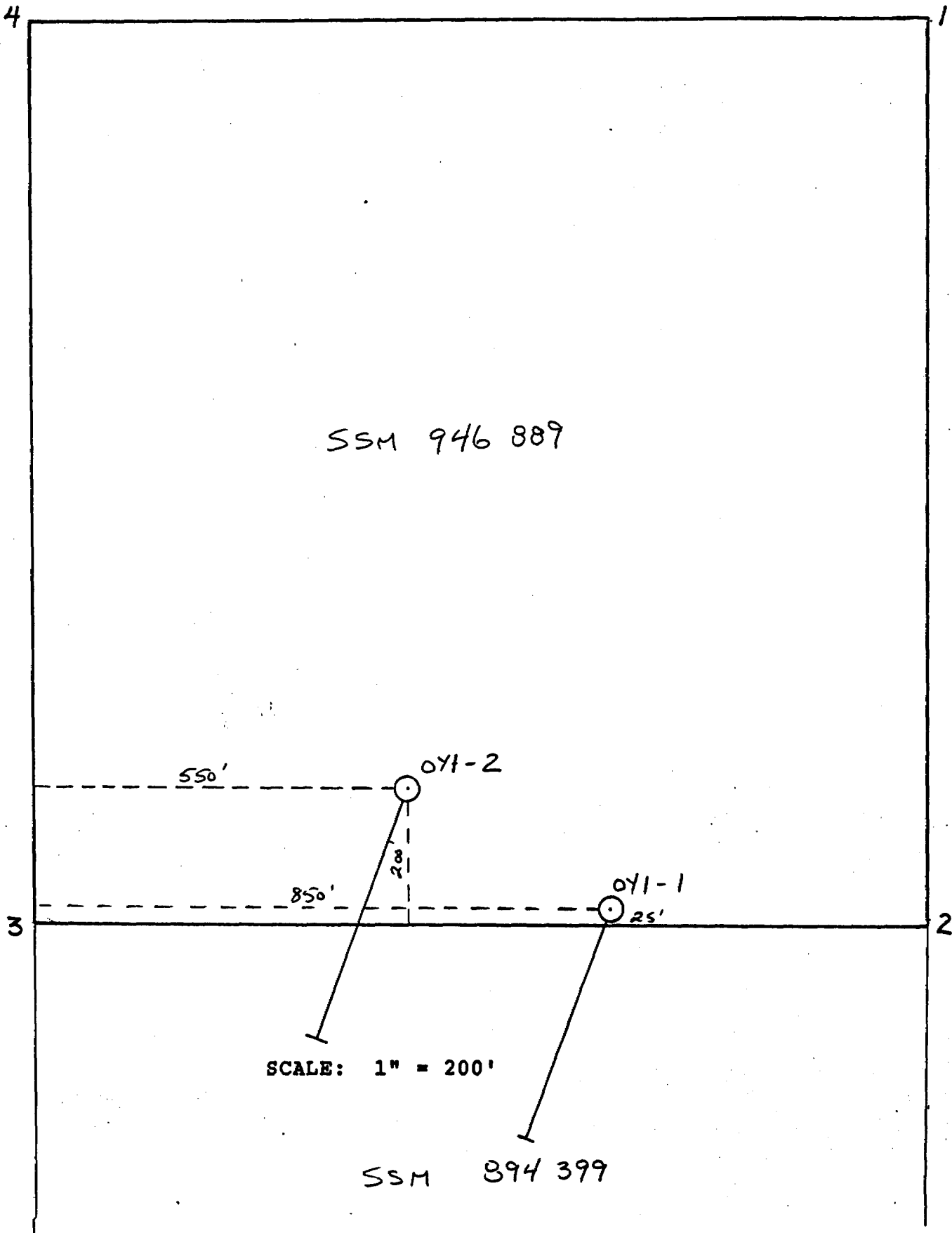
Completed May 17, 1988

ASSAYS

Footage	Rec'y	Rock Type/Alteration	Graphic Log	Mineralization/Structure	% Sulfides	Sample No.	Lt.	Au							
325.5-339		1% sulphides. Angle of foliation to CA = 67° <u>PORPHYRITIC METAVOLCANIC</u> Green to dark grey, foliated and porphyritic, chlorite-rich mafic volcanic. Contains phenocrysts of k-spar (rimmed), plag. and siliceous blebs. Minor quartz and carb. veins				48904	325.5 327.5	Tr.							
		Sulphides < 1%				48905	332 334	Tr.							
339 - 438.6		<u>BANDED INTERMEDIATE VOLCANICS</u> Much like 305.2-325.5 but with less quartz.				48906	340 342	Tr.							
						48907	347 349	Tr.							
						48908	351.2 353.7	Tr.							
						48909	357 359	Tr.							
						48910	368.5 369.5	Tr.							
						48911	377 379	Tr.							
						48912	387 389	Tr.							
						48913	397 399	Tr.							
						48914	405.5 408	Tr.							
						48915	417 419	Tr.							

Pilot Harbour

CLAIM NUMBER 946 889



Blot Harbour

Project No. N.T.S.

Core Size: BQ

Lat. 0 + 530 NW

Elev..

Dip -45°

Collared June 5, 1988

Logged by: G. Giga

Dep. 0 + 170 NE

Depth 499'

Bearing 200°

Completed June 8, 1988

ASSAYS

Footage	Rec'y	Rock Type/Alteration	Graphic Log	Mineralization/Structure	% Sulfides	Sample No.	Lt.	Au								
0 - 30		Casing														
30 - 136		INTERMEDIATE MAFIC META-VOLCANIC														
		green grey, fine grained, foliated, silicified, chlorite bearing & occasional quartz-carb. stringers.		Foliation range from 40-60°, avg. 60° to CA. Sulfides present < 1% Py.		4301	39	Tr.								
						4302	49	Tr.								
							51									
						4303	59	Tr.								
							61									
						4304	69	Tr.								
							71									
						4305	79	Tr.								
							81									
						4306	89	Tr.								
							91									
						4307	99	Tr.								
							101									
						4308	109	Tr.								
							111									
						4309	119	Tr.								
							121									
						4310	129	Tr.								
							131									
136 - 169.5		INTERMEDIATE MAFIC PORPHYRY VOLCANIC														
		1 green grey variety of 30-136 < porphyroblasts of k-spar/plag ranging from < 1/16-1/8"		Sulfides present < 1% Py.		4311	139	Tr.								
							141									
						4312	149	Tr.								
							151									

ONTARIO GEOLOGICAL SURVEY
 ASSESSMENT FILES
 OFFICE

 MAR 27 1990

 RECEIVED

Re: Tie Line For Holes 8831-32

Project No. N.T.S.

Core Size: BQ

Lat. 0 + 890 NW

Elev..

Dip -50°

Collared June 10, 1988

Logged by: G. Giga

Dep. 0 + 020 NE

Depth 599'

Bearing 200°

Completed June 12, 1988

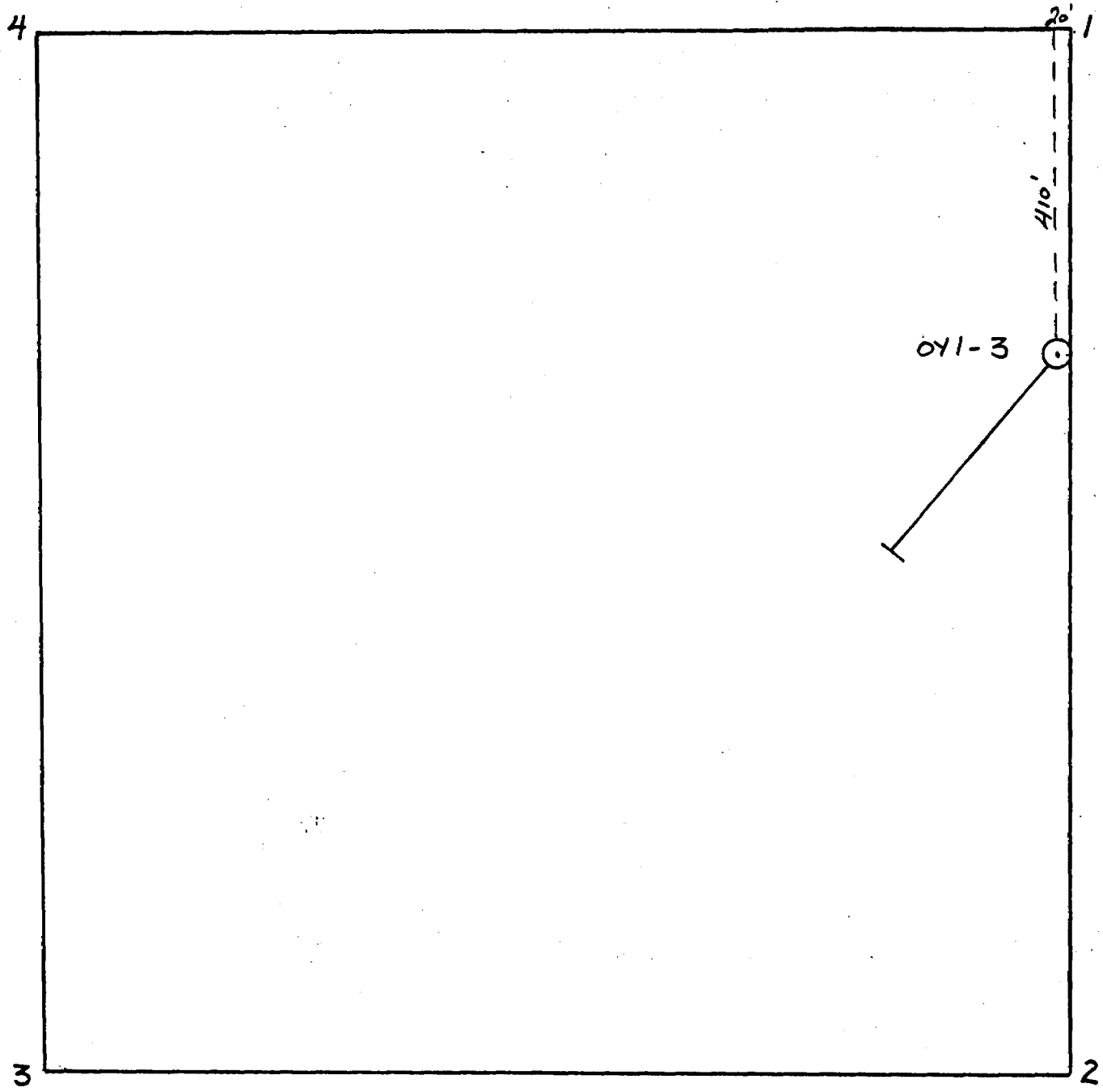
ASSAYS

Footage	Rec'y	Rock Type/Alteration	Graphic Log	Mineralization/Structure	% Sulfides	Sample No.	Lt.	Au									
0 -		Casing															
11 -		INTERMEDIATE MAFIC META-VOLCANIC															
206.5		green grey, fine grained, siliceous, sheared, chlorite sericite bearing, recrystallized k-spar/plag?, infrequently porphyroblastic with occasional irregular quartz-carb.-hematite bearing stringers.		Presence of sulfides <1% Py Foliation range from 40-60°, avg. 60° to CA.		48535	19	Tr.									
						48536	21 29 31	Tr.									
						48537	39 41	Tr.									
						48538	47 48 9	9 Tr.									
						48539	59 61	Tr.									
						48540	69 71	Tr.									
						48541	79 81	Tr.									
						48542	89 91	Tr.									
						48543	99 101	Tr.									
						48544	109	Tr.									
							111										
						48545	119 121	Tr.									
						48546	129	Tr.									
							131										
						48547	139 141	Tr.									

ONTARIO GEOLOGICAL SURVEY
ASSESSMENT FILES
OFFICE
MAR 27 1990
RECEIVED

Pilot Harbour

CLAIM NUMBER SSM 946896



SCALE: 1" = 200'

Port Harbour

Project No.

N.T.S.

Core Size: BQ

Lat. L 16 NW 9+15 SW

Elev..

Dip

-50°

Collared June 14, 1988

Logged by: G. Giga

Dep.

Depth 489'

Bearing

220°

Completed June 16, 1988

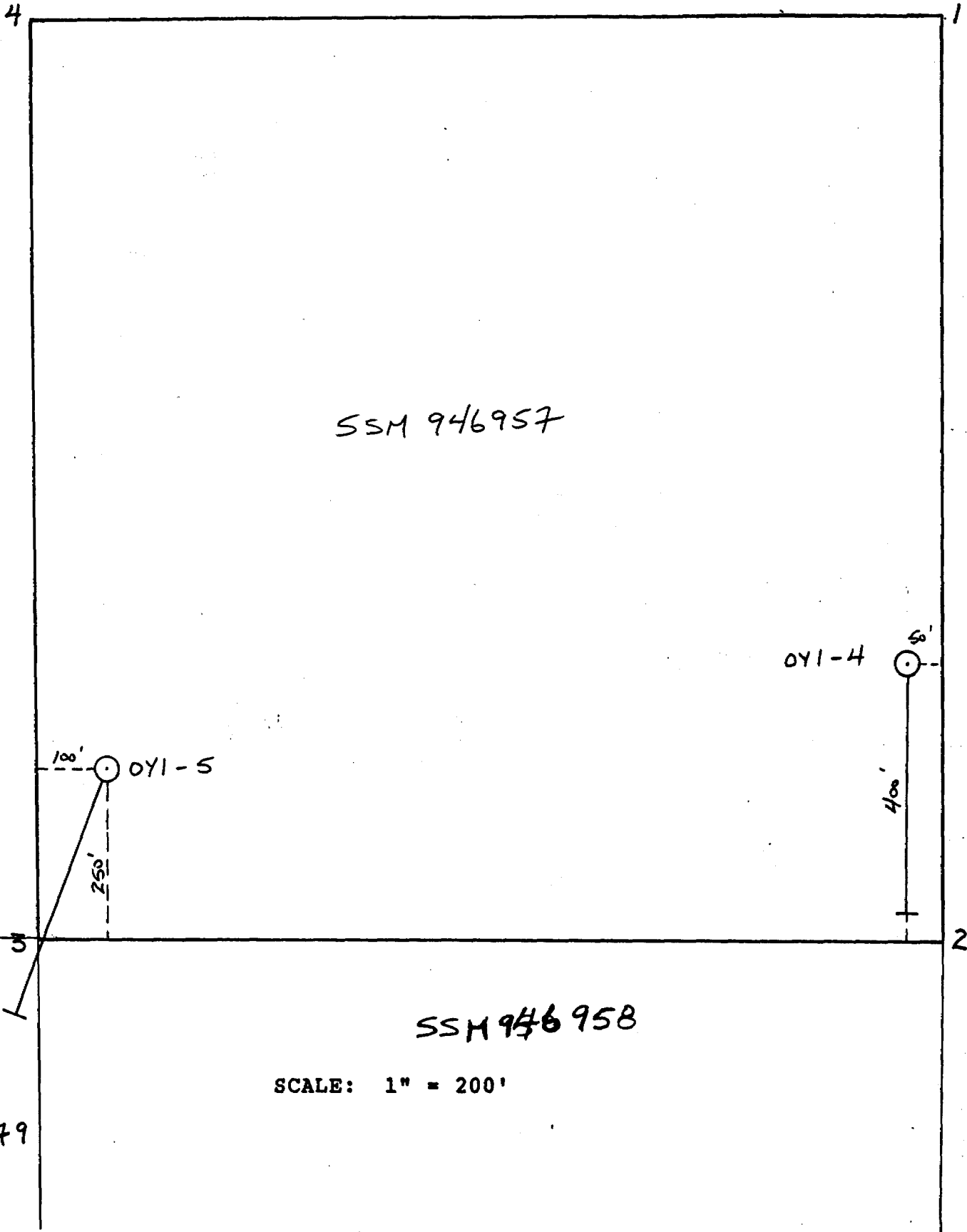
ASSAYS

Footage	Rec'y	Rock Type/Alteration	Graphic Log	Mineralization/Structure	% Sulfides	Sample No.	Lt.	Au							
0	-	Casing													
30	-	INTERMEDIATE MAFIC META-VOLCANIC													
144															
		Green grey, fine grained, chlorite, sericite bearing, infrequent recrystallized with porphyroblasts of plag/k-spar. Occasional irregular quartz-carb-hematite stringers and veins present.		Partially foliated 40-60°, avg. 60° to CA		48603	39	0.007							
							48604	49	0.005						
		quartz-carb-hematite stringers and veins present.		Presence of sulfides <1% Py		48605	51	3 / 0.005							
							48606	59	0.006						
						48607	69	Tr.							
						48608	73	Tr.							
						48609	79	0.007							
						48610	89	Tr.							
						48611	99	Tr.							
						48612	109	Tr.							
						48613	119	Tr.							
						48614	129	Tr.							
						48615	139	Tr.							

ONTARIO GEOLOGICAL SURVEY
 ASSESSMENT FILES
 OFFICE
 MAR 27 1990
 RECEIVED

Pilot Harbour

CLAIM NUMBER SSM 946957



SSM 946957

OYI-4

OYI-5

SSM 946958

SCALE: 1" = 200'

SSM
946979

Lat. L4E

Elev. ()

Dip -50°

Collared June 17, 1988

Logged by: F. Pezzutto and G. Giga

Dep. 31+00N

Depth 599'

Bearing 180°

Completed June 22, 1988

ASSAYS

Footage	Rec'y	Rock Type/Alteration	Graphic Log	Mineralization/Structure	% Sulfides	Sample No.	Lt.	Au							
0-60		CASING													
60-79		Broken core (metabasalt and diorite)													
79-83.5		<u>INTERMED-MAFIC METAVOLC</u> f.-med. gr., chl rich, slightly silicified, foliated, with minor irreg. qtz veins and carb veins on a mm scale		Angle of foliation to CA=40 -42°		48938	Tr.				80-82				
83.5-115.5		<u>ALBITIZED INTERMED METAVOLC</u> med to almost coarse gr., recrystallized, albitized with a pseudo dioritic appearance		Sulfides rare < 1% mostly Py, minor Cp		48939 48940 48941	Tr. Tr. Tr.				84-86 93-95 97-99				
		Actually consists of a series of flows with qtz., chl, and epidote between the flows (10-20 cm thick). Occasionally appears 'salt and peppered'				48942 48943	Tr. Tr.				104-106 114-116				
115.5-123		<u>INTERMED-MAFIC METAVOLC</u> Much like 79-83.5 with qtz veins up to 6" wide with irreg. sulfides blebs 1-3 cm. long (Py-po, minor Cp)		Disseminated sulfides throughout core		48944 48945	Tr. Tr.				116-118 119-121				
123-126.5		<u>ALBITIZED INTERMED METAVOLC</u> Much like 83.5-115.5													
126.5-137.5		<u>INTERMED-MAFIC METAVOLC</u> Much like 79-83.5				48946	Tr.				128-130				

ENVIRONMENTAL SURVEILLANCE
ASSESSMENT FILES
OFFICE
MAR 27 1990
RECEIVED

Project No. N.T.S.

Core Size: BO

Lat. 0+260NW 0+095NE

Elev.:

Dip -45°

Collared June 23, 1988

Logged by: G. Giga

Dep.

Depth 509'

Bearing 200°

Completed June 25, 1988

ASSAYS

Footage	Rec'y	Rock Type/Alteration	Graphic Log	Mineralization/Structure	% Sulfides	Sample No.	Lt.	Au									
0-10		Casing															
10-247		RECRYSTALLIZED INTERMED- MAFIC MTEAVOLC															
		Grn. fgr., silicified, chl ser, epidote bearing, occasionally recrystallized with porphyroblasts of chl and ksp/plag. Freq. occurrence of irreg qtz-carb-chl veins present. Biot bearing seen as occasional bands.		Presence of sulphides Py and minor Po range from <1-10%, arg 1%. Foliation range from 40-60° to ch.		1002	Tr.					17-19					
							1003	Tr.						27-29			
							1004	Tr.						37-39			
							1005	Tr.						47-49			
							1006	Tr.						57-59			
							1007	Tr.						67-69			
							1008	Tr.						77-79			
							1009	Tr.						87-89			
							1010	Tr.						94.7-95.7			
							1011	Tr.						97-99			
							1012	Tr.						105.5-106.5			
							1013	Tr.						108.7-109.7			
							1014	0.010						113-114			
							1015	Tr.						116.5-119.5			
					1016	Tr.						124.2-125.2					
					1017	Tr.						130.2-131.2					
					1018	Tr.						132.2-133.2					
					1019	Tr.						137.4-138.4					
					1020	Tr.						140.3-142.3					
					1021	Tr.						147-149					
					1022	Tr.						157-159					
					1023	Tr.						167-169					
					1024	Tr.						171.5-172.5					
					1025	Tr.						176-177					
					1026	Tr.						179-181					
					1027	Tr.						187-189					
					1028	Tr.						194.5-195.8					
					1029	Tr.						199-202					

ONTARIO GEOLOGICAL SURVEY
ASSESSMENT FILES
OFFICE
MAR 27 1990
RECEIVED

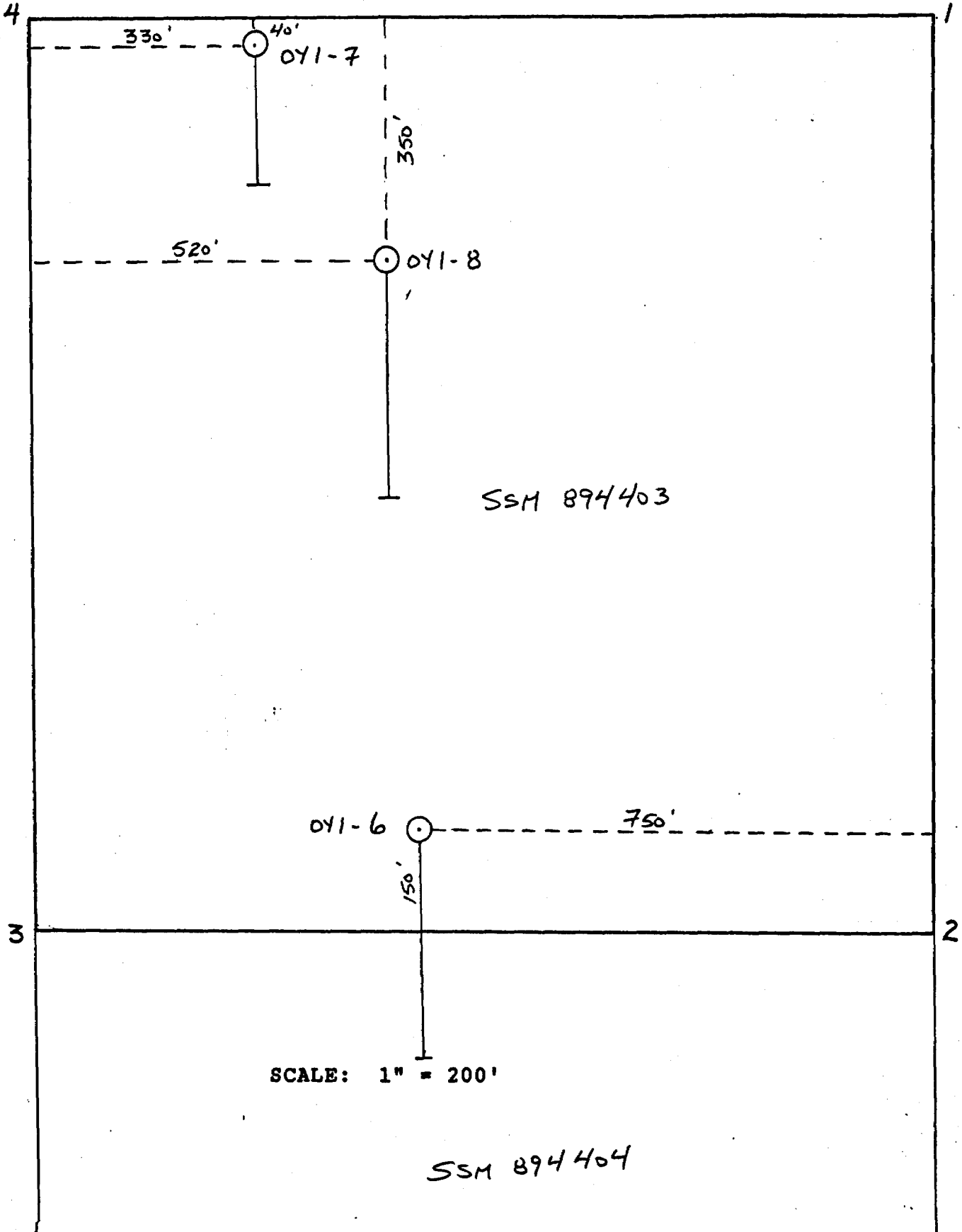
Project No. N.T.S.

Core Size:

Lat.	Elev.	Dip	Collared	Logged by:										
Dep.	Depth	Bearing	Completed	ASSAYS										
Footage	Rec'y	Rock Type/Alteration	Graphic Log	Mineralization/Structure	% Sulfides	Sample No.	Lt.	Au						
						1030		Tr.			203-204			
						1031		Tr.			207-209			
						1032		Tr.			210.5-211.5			
						1033		Tr.			213-214			
						1034		Tr.			217-219			
						1035		Tr.			219.5-220.5			
						1036		Tr.			227-229			
						1037		Tr.			237-239			
247-250.2		RHYOTITE Pink, v. f. fr. chl. bearing, lack of stringers/veins. Presence of sulfides Py range ← 1-10% Py				1038		Tr.			247-250.2			
250.2-260.8		<u>ALTERED RECRYSTALLIZED INTERMED-MAFIC METAVOLC</u>												
		Light green, altered variety of 10-247, appears more re- crystallized and more chlor- itized.				1040		Tr.			267-259			
						1041		Tr.			277-279			
						1042		Tr.			287-289			
						1043		Tr.			299-301			
						1044		Tr.			307-309			
						1045		Tr.			317-319			
						1046		Tr.			329-331			
						1047		Tr.			349-351			
						1048		Tr.			359-351			
						1049		Tr.			369-371			
						1050		Tr.			371-372			
						1051		Tr.			379-381			
						1052		Tr.			389-391			
						1053		Tr.			397-399			

Pilot Harbour

CLAIM NUMBER SSM 894403



Project No. N.T.S.

Core Size: BQ

Lat. 32+50E Elev. Dip -45° Collared June 29, 1988 Logged by: G. Giga
 Dip. 2+00S Depth 279' Bearing 180° Completed July 1, 1988

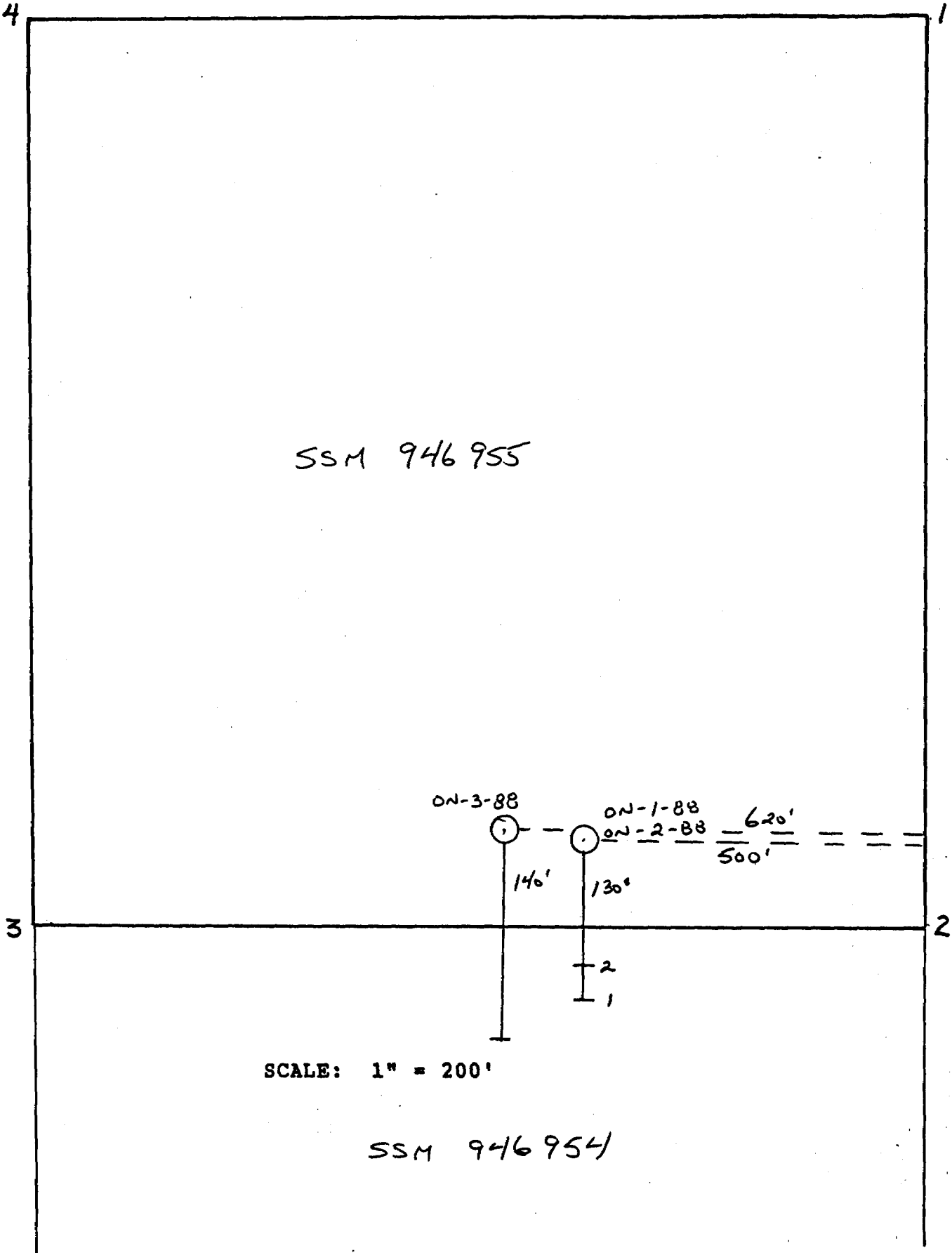
ASSAYS

Footage	Rec'y	Rock Type/Alteration	Graphic Log	Mineralization/Structure	% Sulfides	Sample No.	Lt.	Au							
0-5		Casing													
5-159		INTERMED-MAFIC METAVOLC													
		Grn grey to grey, very f. to f. grained, silicified, chl bearing appearing occasionally as bands biot, garnet bearing		Presence of sulphides ranging from 4-10% py, Minor cp, po occurring as narrow bands 139.5-150'		1125	9	Tr.							
		, with infrequent occurrence of qtz-carb-chl stringers/veins		Foliation ranges from 40-60°, avg 60° to CA		1126	12	Tr.							
						1127	17	Tr.							
						1128	27	Tr.							
						1129	37	Tr.							
							39								
						1130	47	Tr.							
							49								
						1131	57	Tr.							
							59								
						1132	67	Tr.							
							69								
						1133	77	Tr.							
							79								
						1134	87	Tr.							
							89								
						1135	97	Tr.							
							99								

ONTARIO GEOLOGICAL SURVEY
 ASSESSMENT FILES
 OFFICE
 MAR 27 1990
 RECEIVED

Pilot Harbor

CLAIM NUMBER SSM 946 955



SSM 946 955

ON-3-88

ON-1-88

ON-2-88

620'

500'

140'

130'

1

2

1

SCALE: 1" = 200'

SSM 946 954

Pilot Harbour

ONEIDA RESOURCES INC.

Property: MAPLE LAKE
 District: SSM
 NTS:
 Township/Area: PILOT HARBOUR
 Claim Number:

Date Started: OCTOBER 5, 1988
 Date Completed: OCTOBER 7, 1988

Logged By: RAY GARVEY
 Drilled By: OLYMPIC DRILLING
 Objective:

Hole No.	ON-1-88	Page 1 of 5
Hole Location	Line: 11+75N (GRID G) Station: 6+30W Elevation: Azimuth: 180° Dip: -45°	
Hole Length	329	Core Size BQ
Dip Tests: Actual Dip		
	Depth	

FOOTAGE		DESCRIPTION	SAMPLE NUMBER	FROM	TO	WIDTH feet	Au oz/t		
From	To								
0	26.0	CASING							
26.0	64.5	INTERMED. TO MAFIC FLOW medium to coarse grained, medium to dark greenish grey, metavolcanic with dioritic texture, hornblende, biotite, and light grey feldspar grains exhibit weak alignment at 70° to CA, occasional, very narrow quartz-carbonate stringer							

ONTARIO GEOLOGICAL SURVEY
 ASSESSMENT FILES
 OFFICE
 MAR 27 1990
 RECEIVED

Property:

FOOTAGE		DESCRIPTION	SAMPLE NUMBER	FROM	TO	WIDTH feet	Au oz/t		
From	To								
64.5	93.0	INTERMED. TO MAFIC FLOW fine grained, medium to dark greenish grey, mixture of banded and massive andesite, numerous very narrow (1/16") quartz and quartz carbonate stringers criss-crossing throughout at random angles, weak chloritic alteration and tr. Py throughout as fine disseminated grains	2505	64.5	66.0	1.5	Tr.		
			2506	76.0	78.0	2.0	Tr.		
			2507	86.0	88.0	2.0	Tr.		
93.0	104.0	INTERMED. TO MAFIC FLOW medium to coarse grained, medium to dark greenish grey, metavolcanic with dioritic texture, hornblende, biotite, and light grey feldspar grains exhibit weak alignment at 70' to CA, occasional, very narrow quartz- carbonate stringer	2508	96.0	98.0	2.0	Tr.		
			2509	102.0	104.0	2.0	0.005		
104.0	152.0	INTERMED. TO MAFIC FLOW generally fine grained, massive, medium to dark greenish grey, andesite with narrow, fine grained, faintly banded sections, numerous very narrow quartz-carbonate stringers intersect the unit at random angles, weak chloritic alteration throughout, a few narrow phases exhibiting coarser dioritic texture - 124.0-126.0 - 149.0-152.0 115.5-116.0: narrow siliceous lense with up to 10% Po/Py as fine seams and coarse grains	2510	108.0	110.0	2.0	Tr.		
			2511	115.5	116.0	0.5	Tr.		
			2512	116.0	117.0	1.0	Tr.		
			2513	117.0	117.5	0.5	Tr.		
			2514	119.0	121.0	2.0	Tr.		
			2515	129.0	131.0	2.0	Tr.		
			2516	139.0	141.0	2.0	Tr.		
2517	149.0	152.0	3.0	Tr.					
152.0	153.0	QUARTZ-FELDSPAR PORPHYRY	2518	152.0	153.0	1.0	Tr.		

Property:

FOOTAGE		DESCRIPTION	SAMPLE NUMBER	FROM	TO	WIDTH feet	Au oz/t		
From	To								
153.0	229.0	up to 20% of bulk composition comprised of light grey to white phenocrysts of quartz and plagioclase up to 1/8" in diam. but generally smaller, matrix is medium greenish grey, fine grained, feldspar and quartz with minor sericite, barren of sulphides, both contacts sharp at approx. 65' to CA							
		INTERMED. TO MAFIC FLOW	2519	153.0	155.0	2.0	Tr.		
		fine grained, medium to dark greenish grey,	2520	163.0	165.0	2.0	Tr.		
		generally massive but occasionally weakly	2521	173.5	174.0	0.5	Tr.		
		banded andesite, (at 70' to CA), weak	2522	186.5	188.0	1.5	Tr.		
		chloritic alteration throughout, few scattered	2523	193.0	194.0	1.0	0.005		
		very narrow calcite stringers, several narrow	2524	207.5	208.0	0.5	0.005		
		finely banded zones of interflow sediment with	2525	217.0	218.0	1.0	Tr.		
		alternating light grey, siliceous and dark	2526	224.0	225.0	1.0	Tr.		
		grey to black argillaceous bands (at 70'							
		to CA) and containing up to 5% Po/Py as very							
		thin seams and coarse grains. Occassionally							
		the metasediment contain small (1/16") light							
		pinkish grey garnets							
		173.5-174.0, 186.5-188.0, 193.0-193.5, 207.5-							
		208.0, 217.0-218.0, 224.0-225.0, sets of							
		micro-faults evident in the finely banded							
		sediments with displacements up to 1/4", as well							
		as minor contorted soft sediment deformation,							
		bottom contact gradational into coarser grain-							
		ed flow							
229.0	254.0	MAFIC FLOW	2527	234.0	236.0	2.0	Tr.		
		medium to coarse grained, dark greenish grey,	2528	244.0	244.6	0.5	Tr.		
		mafic metavolcanic exhibiting coarse dioritic	2529	252.0	254.0	2.0	Tr.		
		texture							

Property:

FOOTAGE		DESCRIPTION	SAMPLE NUMBER	FROM	TO	WIDTH feet	Au oz/t		
From	To								
		251.0-254.0: coarse amphibole grains give a "spotty" appearance to the meta-volcanic weak chloritic alteration throughout, upper contact gradational, lower contact sharp 244.0-244.5: white quartz vein with sharp contacts, containing few small inclusions of mafic metavolcanic and coarse irregular grains of Py (up to 3%) few scattered, narrow, quartz-carbonate stringers							
254.0	286.0	INTERMED. TO MAFIC FLOW fine grained, medium to dark greenish grey, massive andesite, with narrow lenses exhibiting a weak banding at 70' to CA, weak chloritic alteration and minor quartz-carbonate stringers, throughout 256.5-259.0: mixture of narrow quartz veins and silicified, banded, metavolcanic with minor brecciation and contorted banding, up to 2% Py as small blebs and fine disseminated grains 282.5-284.0: snow-white quartz vein with few angular inclusions of mafic meta-volcanic, barren of sulphides	2530 2531 2532	256.5 269.0 282.5	259.0 271.0 284.0	2.5 2.0 1.5	Tr. Tr. Tr.		

Property:

FOOTAGE		DESCRIPTION	SAMPLE NUMBER	FROM	TO	WIDTH feet	Au oz/t		
From	To								
		lower contact gradational into intermed. to felsic flow							
286.0	329.0	INTERMED. TO FELSIC FLOW fine grained, light greenish grey, weakly banded, dacite andesite, weak sericitic alteration throughout and minor talc development along shear planes toward the bottom of the section, few narrow quartz-carbonate stringers, lacks sulphide mineralization, upper contact gradational	2533 2534 2535 2536	289.0 299.0 309.0 319.0	291.0 301.0 311.0 321.0	2.0 2.0 2.0 2.0	Tr. Tr. Tr. Tr.		
		END OF HOLE							

Pilot Harbour

ONEIDA RESOURCES INC.

Property: MAPLE LAKE
 District: SSM
 NTS:
 Township/Area: PILOT HARBOUR
 Claim Number:

Date Started: OCT.8,1988
 Date Completed: OCT.10,1988

Logged By: RAY GARVEY
 Drilled By: OLYMPIC DRILLING
 Objective:

Hole No.	ON-2-88	Page	1	of	4
Hole Location	Line:	11+75N (GRID G)			
	Station:	6+30W			
	Elevation:				
	Azimuth:	180°			
	Dip:	-65°			
Hole Length	439	Core Size	BQ		
Dip Tests:	Actual Dip				
	Depth				

FOOTAGE		DESCRIPTION	SAMPLE NUMBER	FROM	TO	WIDTH feet	Au oz/t		
From	To								
0	25.0	CASING							
25.0	239.5	INTERMEDIATE TO MAFIC FLOW predominantly fine to medium grained, medium to dark greenish grey andesite with numerous very narrow stringers of quartz and quartz-carbonate criss-crossing the core at random angles, faint banding is generally observed at 45° cax, weak chloritic alteration throughout	2537	32.5	34.5	2.0	Tr.		
		32.5-34.5, 37.0-39.0, 48.0-49.5, 50.0-53.0, 54.0-55.0: few narrow moderately silicified and sericitized lenses with up to 5% po/py as coarse grains	2538	37.0	39.0	2.0	Tr.		
			2539	48.0	49.5	1.5	Tr.		
			2540	49.5	50.0	0.5	Tr.		
			2541	50.0	53.0	3.0	Tr.		
			2542	53.0	54.0	1.0	Tr.		
			2543	54.0	55.0	1.0	Tr.		
			2544	59.0	60.0	1.0	Tr.		
			2545	62.0	63.0	1.0	Tr.		
			2546	70.0	72.0	2.0	0.005		
			2547	80.0	82.0	2.0	Tr.		
			2548	90.0	92.0	2.0	Tr.		
			2549	100.0	102.0	2.0	Tr.		
		49.5-50.0, 53.0-54.0: narrow quartz veins with irregular contacts and lacking in sulphides	2550	110.0	112.0	2.0	Tr.		
			2551	120.0	122.0	2.0	Tr.		
			2552	130.0	132.0	2.0	Tr.		
			2553	140.0	142.0	2.0	Tr.		
			2554	150.0	152.0	2.0	Tr.		
			2555	160.0	162.0	2.0	Tr.		

Property: MAPLE LAKE

FOOTAGE		DESCRIPTION	SAMPLE NUMBER	FROM	TO	WIDTH feet	Au oz/t		
From	To								
239.5	244.0	SILICEOUS SEDIMENT mixture of unsorted dark grey siliceous greywacke and finely banded light grey to black fine grained siliceous and argillitic arenite, the finely banded sections exhibit contorted banding and contain minor amounts of po/py as fine grains 243.0-243.5: coarse euhedral calcite lacking in sulphides	2556	170.0	172.0	2.0	Tr.		
			2557	183.5	185.0	1.5	Tr.		
			2558	190.0	192.0	2.0	Tr.		
			2559	200.0	202.0	2.0	Tr.		
			2560	210.0	212.0	2.0	Tr.		
			2561	220.0	222.0	2.0	Tr.		
			2562	230.0	232.0	2.0	Tr.		
			2563	239.5	242.0	2.5	Tr.		
			2564	242.0	245.5	3.5	Tr.		
			245.5	253.0	INTERBEDDED MAFIC FLOW AND FINE GRAINED SEDIMENT mixture of fine grained, dark greenish grey massive andesite and fine grained light and dark banded siliceous interflow sediment, minor py as fine seams and grains in the sediment	2565	245.5	248.0	2.5
2566	248.0	250.0				2.0	Tr.		
2567	250.0	253.0				3.0	Tr.		
253.0	302.0	INTERMEDIATE TO MAFIC FLOW fine grained, medium to dark greenish grey, relatively massive andesite with faint banding at 45° cax and very narrow quartz-carbonate stringers, weak chloritic alteration, both contacts gradational	2568	260.0	262.0	2.0	Tr.		
			2569	270.0	272.0	2.0	Tr.		
			2570	280.0	282.0	2.0	Tr.		
			2571	290.0	292.0	2.0	Tr.		
			2572	300.0	302.0	2.0	Tr.		

Property: MAPLE LAKE

FOOTAGE		DESCRIPTION	SAMPLE NUMBER	FROM	TO	WIDTH feet	Au oz/t		
From	To								
302.0	314.0	MAFIC FLOW coarse grained, dark greenish grey mafic metavolcanic with "dioritic" (or amphibolitic) texture, coarse amphibole grains give a "spotty" appearance to the otherwise faintly banded (at 45° cax) flow, a high concentration of po/py (up to 15%) as interstitial grains and fine seams, weak chloritic alteration, both contacts gradational, grades into "amphibolitic" flow lacking sulphides 307.0-307.5: minor quartz veining accompanied by up to 20% po/py as coarse irregular blebs	2573	302.0	304.5	2.5	Tr.		
			2574	304.5	307.0	2.5	Tr.		
			2575	307.0	307.5	0.5	Tr.		
			2576	307.5	310.0	2.5	Tr.		
			2577	310.0	312.0	2.0	Tr.		
			2578	312.0	314.0	2.0	Tr.		
314.0	338.0	MAFIC FLOW medium to coarse grained, dark greenish grey "spotty" amphibolitic andesite, generally medium grained with coarser phases, amphiboles comprise approx. 40% of bulk composition, chloritic alteration, tr py, both contacts gradational, grades into sheared mafic flow	2579	320.0	322.0	2.0	Tr.		
			2580	330.0	332.0	2.0	Tr.		
			2581	332.0	333.0	1.0	Tr.		
338.0	355.0	SHEARED MAFIC FLOW fine grained, dark grey sheared and fractured mafic flow, moderate to intense chloritic alteration, shearing varies from 30° to 45° cax, lack sulphides, both contacts gradational	2582	340.0	342.0	2.0	Tr.		
			2583	350.0	352.0	2.0	Tr.		

Property: MAPLE LAKE

FOOTAGE		DESCRIPTION	SAMPLE NUMBER	FROM	TO	WIDTH feet	Au oz/t		
From	To								
355.0	439.0	INTERMEDIATE FLOW very fine grained, light to medium grey, massive dacitic andesite, weak chloritic and sericitic alteration, sharp upper contact at 45' cax	2584	359.0	360.0	1.0	Tr.		
			2585	360.0	362.0	2.0	Tr.		
			2586	370.0	372.0	2.0	Tr.		
			2587	380.0	382.0	2.0	Tr.		
			2588	390.0	392.0	2.0	Tr.		
			2589	400.0	402.0	2.0	Tr.		
			2590	410.0	412.0	2.0	Tr.		
			2591	420.0	422.0	2.0	Tr.		
			2592	430.0	432.0	2.0	Tr.		
439.0		END OF HOLE							

Pilot Harbour

ONEIDA RESOURCES INC.

Property: MAPLE LAKE
 District: SSM
 NTS:
 Township/Area: PILOT HARBOUR
 Claim Number:

Date Started: OCT. 11, 1988
 Date Completed: OCT. 13, 1988

Logged By: RAY GARVEY
 Drilled By: OLYMPIC DRILLING
 Objective:

Hole No.	ON-3-88	Page 1 of 4
Hole Location	Line: 12+50N (GRID G) Station: 7+80W Elevation: Azimuth: 180° Dip: -45°	
Hole Length	431	Core Size BQ
Dip Tests: Actual Dip		
	Depth	

FOOTAGE		DESCRIPTION	SAMPLE NUMBER	FROM	TO	WIDTH feet	Au oz/t		
From	To								
0	17.0	CASING							
17.0	131.0	INTERMEDIATE TO MAFIC FLOW predominantly fine grained, medium to dark greenish grey, occasionally faintly banded at 60° cax, scattered throughout are very narrow quartz and quartz-carbonate stringers at random angles to cax, occasionally grades into slightly coarser grained phases (dioritic texture?), weak chloritic alteration	2593 2594 2595 2596 2597 2598 2599 2600 2601	30.0 40.0 50.0 60.0 70.0 72.0 80.0 90.0 100.0	32.0 42.0 52.0 62.0 72.0 74.0 82.0 92.0 102.0	2.0 2.0 2.0 2.0 2.0 2.0 2.0 2.0 2.0	Tr. Tr. Tr. Tr. Tr. Tr. Tr. Tr. Tr.		
		72.0-74.0: fine grained tuffaceous sediment, small mafic clasts in a fine grained felsic finely banded matrix, approx. 20% clast supported	2602 2603 2604 2605	110.0 112.0 120.0 130.0	112.0 113.0 122.0 131.0	2.0 1.0 2.0 1.0	Tr. Tr. Tr. Tr.		
		112.0-113.0: lens of "molasses and cream" flow banding with minor quartz veining, lacks sulphides							
		17.0-35.0: rusty fractures (surface weathering)							

Property: MAPLE LAKE

FOOTAGE		DESCRIPTION	SAMPLE NUMBER	FROM	TO	WIDTH feet	Au oz/t		
From	To								
131.0	131.5	MAFIC INTRUSIVE coarse grained, dark greenish grey amphibolite intrusive (sub-volcanic), coarse amphibole grains up to 1/4" long in a fine grained micaceous matrix, both contacts sharp, lacks sulphides	2606	131.0	131.5	0.5	Tr.		
131.5	177.5	INTERMEDIATE TO MAFIC FLOW predominantly fine grained, medium to dark greenish grey, occasionally faintly banded andesite, numerous very narrow quartz and quartz-carbonate stringers at all angles, few lenses exhibiting coarser "dioritic" texture, weak chloritic alteration	2607 2608 2609 2610	140.0 150.0 160.0 170.0	142.0 152.0 162.0 172.0	2.0 2.0 2.0 2.0	Tr. Tr. Tr. Tr.		
177.5	178.0	QUARTZ-FELDSPAR PORPHYRY fine (1/8") rounded light to white phenocrysts of quartz and plagioclase in a medium to dark grey, fine grained matrix of feldspar, quartz and minor mafics with up to 3% py as coarse grains, sharp contacts at 60° cax	2611	177.5	178.0	0.5	Tr.		
178.0	179.0	INTERMEDIATE TO MAFIC FLOW fine grained, medium to dark greenish grey andesite, weak chloritic alteration	2612	178.0	179.0	1.0	Tr.		
179.0	180.5	QUARTZ VEIN white quartz with narrow lensoid inclusions of intermediate to mafic flow (aligned at 60° cax) and 1-2% py as fine and coarse grains, contacts are relatively sharp	2613	179.0	180.5	1.5	Tr.		

Property: MAPLE LAKE

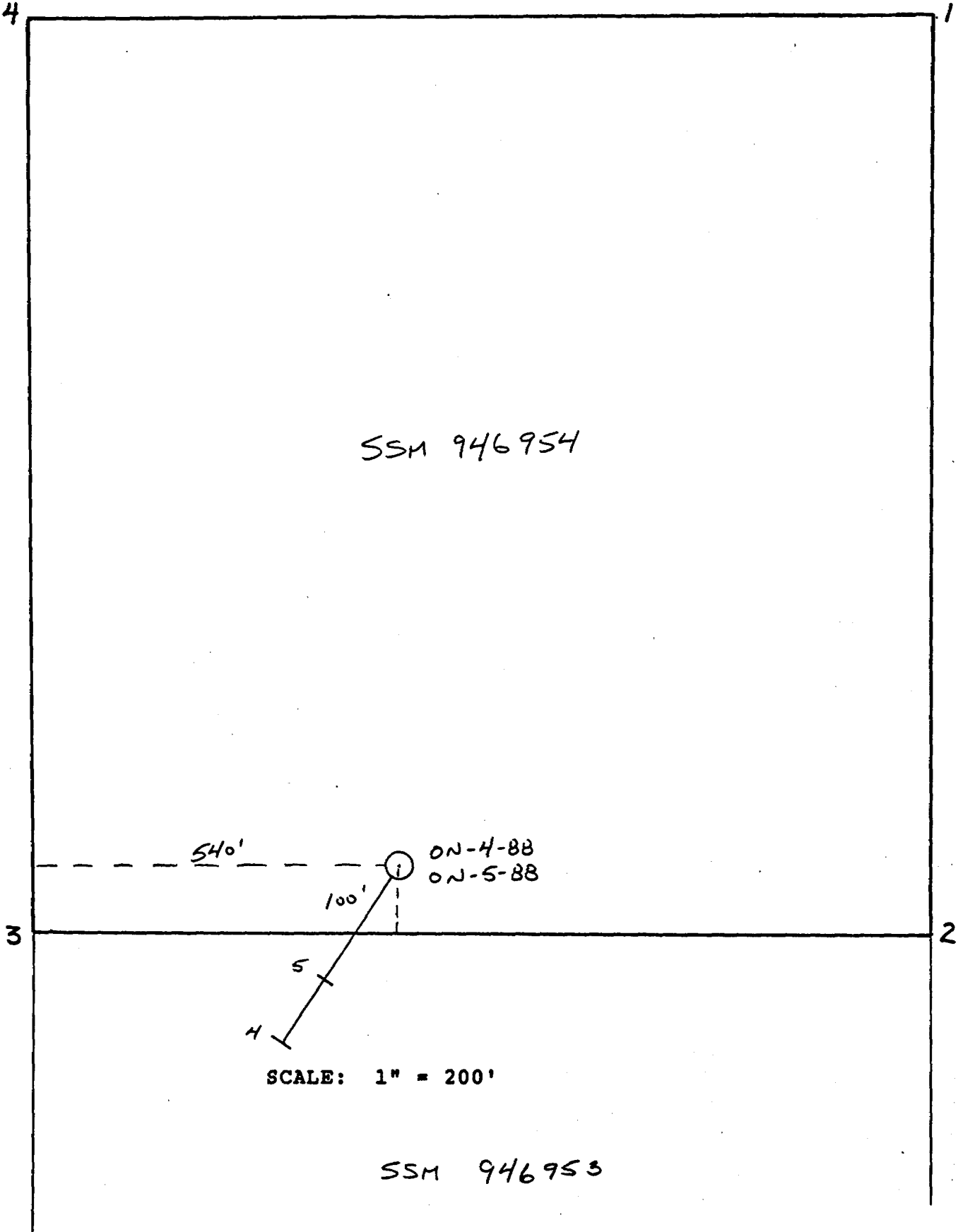
FOOTAGE		DESCRIPTION	SAMPLE NUMBER	FROM	TO	WIDTH feet	Au oz/t		
From	To								
180.5	275.0	INTERMEDIATE TO MAFIC FLOW fine grained, medium to dark greenish grey, occasionally faintly banded andesite, scattered narrow quartz and quartz-carbonate stringers, weak chloritic alteration 220.0- 221.0, 233.5-234.0: lenses of finely banded alternating siliceous and argillaceous sediment with numerous pale pinkish grey garnets up to 1/4" in diameter, aligned in rows parallel to the bedding 245.0-275.0: gradually increasing grain size and exhibiting "dioritic" texture, bottom contact gradational	2614	180.5	182.0	1.5	Tr.		
			2615	190.0	192.0	2.0	Tr.		
			2616	200.0	202.0	2.0	Tr.		
			2617	210.0	212.0	2.0	Tr.		
			2618	220.0	221.0	1.0	Tr.		
			2619	230.0	233.5	3.5	Tr.		
			2620	233.5	234.0	0.5	0.009		
			2621	240.0	242.0	2.0	Tr.		
			2622	250.0	252.0	2.0	Tr.		
			2623	260.0	262.0	2.0	Tr.		
2624	270.0	272.0	2.0	Tr.					
275.0	289.5	MAFIC FLOW coarse grained, medium to dark greenish grey, "amphibolitic" andesite, coarse amphibole grains up to 1/8" in diameter comprise approx. 40% of the bulk composition and give a spotty appearance to the section, the remainder is medium grey and consists of fine grained feldspar with very minor biotite and quartz, lacks sulphides, upper contact gradational, lower contact sharp	2625	280.0	282.0	2.0	Tr.		
289.5	338.0	INTERMEDIATE TO MAFIC FLOW fine grained, medium to dark greenish grey andesite, faint banding at 80' cax	2626	290.0	292.0	2.0	Tr.		
			2627	300.0	302.0	2.0	Tr.		
			2628	310.0	312.0	2.0	Tr.		
			2629	320.0	322.0	2.0	Tr.		
			2630	330.0	332.0	2.0	Tr.		

Property: MAPLE LAKE

FOOTAGE		DESCRIPTION	SAMPLE NUMBER	FROM	TO	WIDTH feet	Au oz/t		
From	To								
338.0	339.0	FINE GRAINED MASSIVE ARGILLACEOUS SEDIMENT contains a few small (1/16") light pinkish grey garnets	2631	338.0	339.0	1.0	Tr.		
339.0	386.0	INTERMEDIATE FLOW fine grained, light to medium greenish grey, generally massive but occassionally faintly banded dacitic andesite, very weak chloritic and sericitic alteration, where present the banding is at 75-80° cax, occassional very narrow quartz-carbonate stringers	2632 2633 2634 2635 2636	340.0 348.5 360.0 370.0 380.0	342.0 351.0 362.0 372.0 382.0	2.0 2.5 2.0 2.0 2.0	Tr. Tr. Tr. Tr. Tr.		
		348.5-351.0: BRECCIA ZONE angular and rounded fragments of intermediate metavolcanics up to 1" across in a sheared, silicified matrix with minor quartz veining and coarse feldspar, minor sericite alteration, minor brown carbonate in fractures, lacks sulphides							
386.0	419.0	MIXED ZONE (DACITIC ANDESITE/PEGMATITE?) approx. equal amounts of fine grained light greenish grey, massive dacitic andesite and very coarse grained (pegmatitic?) lenses of feldspar, sericite and minor quartz, the rock types grade into each other and average from 1-3' in thickness, lacks sulphides or quartz veins	2637 2638 2639	390.0 400.0 410.0	392.0 402.0 412.0	2.0 2.0 2.0	Tr. Tr. Tr.		
419.0	431.0	INTERMEDIATE FLOW fine grained, light greenish grey massive dacitic andesite, minor sericite alteration	2640	420.0	422.0	2.0	Tr.		
431.0		END OF HOLE							

Plot Harbor

CLAIM NUMBER SSM 946954



Pilot Harbour

ONEIDA RESOURCES INC.

Property: MAPLE LAKE
 District: SSM
 NTS:
 Township/Area: PILOT HARBOUR
 Claim Number:

Date Started: OCT. 13, 1988
 Date Completed: OCT. 16, 1988

Logged By: RAY GARVEY
 Drilled By: OLYMPIC DRILLING
 Objective:

Hole No.	ON-4-88	Page 1 of 4
Hole Location	Line: 9+00E (GRID F) Station: 0+75N Elevation: Azimuth: 225° Dip: -45°	
Hole Length	437	Core Size BQ
Dip Tests: Actual Dip		
Depth		

FOOTAGE		DESCRIPTION	SAMPLE NUMBER	FROM	TO	WIDTH feet	Au oz/t		
From	To								
0	23.0	CASING - overburden							
23.0	81.0	INTERMED TO MAFIC FLOW predominantly fine grained, dark greenish grey, massive, mafic metavolcanic, a few very narrow quartz-carbonate stringers, a few lenses, 1" to 2" in thickness of medium grained granite hybrid intrusive. The lenses are conformable with volcanic banding and are comprised mainly of plagioclase with minor quartz, hornblende and biotites:	2641 2642 2643 2644 2645 2646 2647 2648 2649	40.0 45.0 48.5 49.5 60.0 68.5 70.0 71.0 80.0	42.0 46.0 49.5 52.0 62.0 70.0 71.0 72.5 81.0	2.0 1.0 1.0 2.5 2.0 1.5 1.0 1.5 1.0	Tr. Tr. Tr. Tr. Tr. Tr. Tr. Tr. Tr.		
		70.0-71.0: zone of brecciation, fragments of mafic material up to 1" in size in a matrix of quartz and carbonate, intense apple green epidote alteration through matrix, weak epidote alteration extends for 1.5 to 2.0 ft. on either side of the zone in fractures, weak chloritic alteration							

Property:

FOOTAGE		DESCRIPTION	SAMPLE NUMBER	FROM	TO	WIDTH feet	Au oz/t		
From	To								
81.0	83.0	GRANITE medium grained, light to medium grey, granite comprised predominantly of plagioclase, with minor quartz, biotite, and hornblende, with contacts sharp	2650	81.0	83.0	2.0	Tr.		
83.0	91.0	INTERMED TO MAFIC FLOW fine grained med. to dark greenish grey, massive mafic metavolcanic, few quartz and quartz-carbonate stringers	2651 2652	83.0 90.0	84.0 91.0	1.0 1.0	Tr. Tr.		
91.0	97.0	GRANITE medium grained, light to medium grey, granite, both contacts sharp	2653 2654	91.0 95.0	93.0 97.0	2.0 2.0	Tr. Tr.		
97.0	296.0	INTERMED TO MAFIC FLOW predominantly fine grained, dark greenish grey massive andesite with a few narrow coarser grained phases, and occasional very narrow granitic lense, scattered narrow zones with weak chloritic alteration, occasional faint banding at 60' to CA, few narrow interflow sedimentary lenses at 70' to CA	2655 2656 2657 2658 2659 2660 2661 2662 2663 2664 2665 2666 2667 2668 2669 2670 2671 2672	97.0 110.0 120.0 126.5 133.5 137.0 140.0 148.0 160.0 170.0 180.0 190.0 200.0 210.0 220.0 222.0 230.0 240.0	99.0 112.0 122.0 129.0 134.0 138.0 142.0 149.5 162.0 172.0 182.0 192.0 202.0 212.0 222.0 223.0 232.0 242.0	2.0 2.0 2.0 2.5 0.5 1.0 2.0 1.5 2.0 2.0 2.0 2.0 2.0 2.0 2.0 1.0 2.0 2.0	Tr. Tr. Tr. Tr. Tr. Tr. Tr. Tr. Tr. Tr. Tr. Tr. Tr. Tr. Tr. Tr. Tr. Tr.		

Property:

FOOTAGE		DESCRIPTION	SAMPLE NUMBER	FROM	TO	WIDTH feet	Au oz/t		
From	To								
296.0	335.5	INTERMEDIATE FLOW fine grained, light to medium greenish grey, generally massive andesite, very minor chlorite alteration, tr. Py throughout as fine disseminated grains	2673	250.0	252.0	2.0	Tr.		
			2674	260.0	262.0	2.0	Tr.		
			2675	270.0	272.0	2.0	Tr.		
			2676	280.0	282.0	2.0	Tr.		
			2677	290.0	292.0	2.0	Tr.		
			2678	292.0	294.0	2.0	Tr.		
			2679	294.0	296.0	2.0	Tr.		
			2680	300.0	302.0	2.0	Tr.		
			2681	310.0	312.0	2.0	Tr.		
			2682	320.0	322.0	2.0	Tr.		
			2683	330.0	332.0	2.0	Tr.		
335.5	337.0	QUARTZ VEIN brecciated, white quartz vein with small volcanic inclusions, minor chloritic seams, tr. to 1% Py	2684	335.5	337.0	1.5	Tr.		
337.0	338.5	ALTERED INTERMEDIATE FLOW vague breccia fragments sheared out in a banded, silicified, chloritic and sericitic altered andesite, tr. Py as very fine grains	2685	337.0	338.5	1.5	Tr.		
338.5	437.0	INTERMEDIATE FLOW generally fine grained, with a few coarser grained phases, medium to light greenish grey, mixture of massive and banded andesite, banding at 75° to CA, banded sections are highlighted by very narrow biotitic seams, occasional narrow zone exhibiting a weak variolitic texture with varioles stretched in alignment with weak schistosity	2686	340.0	342.0	2.0	Tr.		
			2687	350.0	352.0	2.0	Tr.		
			2688	358.0	360.5	2.5	Tr.		
			2689	360.5	363.0	2.5	Tr.		
			2690	363.0	364.5	1.5	Tr.		
			2691	370.0	372.0	2.0	Tr.		
			2692	380.0	382.0	2.0	Tr.		
			2693	390.0	392.0	2.0	Tr.		
			2694	400.0	402.0	2.0	Tr.		

Property:

FOOTAGE		DESCRIPTION	SAMPLE NUMBER	FROM	TO	WIDTH feet	Au oz/t		
From	To								
		355.0-364.5: fine disseminated Py grains comprise up to 10% of bulk composition of light greenish grey andesite, with weak sericitic alteration, contact gradational	2695 2696 2697	410.0 420.0 430.0	412.0 422.0 432.0	2.0 2.0 2.0	Tr. Tr. Tr.		
		END OF HOLE							

Billet Number

ONEIDA RESOURCES INC.

Property: MAPLE LAKE
 District: SSM
 NTS:
 Township/Area: PILOT HARBOUR
 Claim Number:

 Date Started: OCTOBER 16, 1988
 Date Completed: OCTOBER 18, 1988

 Logged By: RAY GARVEY
 Drilled By: OLYMPIC DRILLING
 Objective:

Hole No.	ON-5-88	Page 1 of 4
Hole Location	Line:	9+00E (GRID "F")
	Station:	0+75N
	Elevation:	
	Azimuth:	225°
	Dip:	-65°
Hole Length	479	Core Size BQ
Dip Tests: Actual Dip		
Depth		

FOOTAGE		DESCRIPTION	SAMPLE NUMBER	FROM	TO	WIDTH feet	Au oz/t		
From	To								
0	19.0	CASING - overburden							
19.0	67.0	INTERMED. TO MAFIC FLOW fine grained, medium to dark greenish grey, generally massive, andesite. With few conformable granitic lenses up to 3" in thickness, minor chloritic alteration	2698 2699 2700 2701	30.0 40.0 50.0 60.0	32.0 42.0 52.0 62.0	2.0 2.0 2.0 2.0	Tr. Tr. Tr. Tr.		
67.0	70.5	GRANITE medium to coarse grained, grey granite comprised predominantly of plagioclase with minor quartz, biotite and hornblende	2702	67.0	70.5	3.5	Tr.		
70.5	77.0	MIXTURE OF HYBRID GRANITE AND MAFIC FLOW interlensing of dark mafic flow and dark grey hybrid granite with average lense thickness of 1.0 ft.	2703 2704	70.5 73.5	73.5 77.0	3.0 3.5	Tr. Tr.		
77.0	84.0	INTERMEDIATE TO MAFIC FLOW fine grained, medium to dark greenish grey, massive andesite	2705	79.0	81.0	2.0	Tr.		

Property:

FOOTAGE		DESCRIPTION	SAMPLE NUMBER	FROM	TO	WIDTH feet	Au oz/t		
From	To								
84.0	92.5	mixture of hybrid granite with moderate epidote alteration and dark grey mafic flow	2706	84.0	87.0	3.0	Tr.		
			2707	87.0	90.0	3.0	Tr.		
			2708	90.0	92.5	2.5	Tr.		
92.5	95.0	bleached, rusty weathered, vuggy, friable, granite, appears to be a fault zone	2709	92.5	95.0	2.5	Tr.		
95.0	105.0	MAFIC FLOW fine grained, dark grey, massive andesite	2710	99.0	101.0	2.0	Tr.		
105.0	109.0	brecciated, friable, sheared, mafic flow with calcite-veining	2711	105.0	108.0	3.0	Tr.		
109.0	140.0	INTERMED. TO MAFIC FLOW fine grained, medium to dark greenish grey, massive andesite	2712	110.0	112.0	2.0	Tr.		
			2713	120.0	122.0	2.0	Tr.		
			2714	130.0	132.0	2.0	Tr.		
140.0	142.0	GREY GRANITE	2715	140.0	142.0	2.0	Tr.		
142.0	144.5	INTERMED. TO MAFIC FLOW							
144.5	145.5	GREY GRANITE	2716	144.5	145.5	1.0	Tr.		
145.5	155.0	INTERMED. TO MAFIC FLOW	2717	150.0	152.0	2.0	Tr.		
155.0	157.5	MEDIUM TO DARK GREY GRANITE	2718	155.0	157.5	2.5	Tr.		
157.5	203.0	INTERMED. TO MAFIC FLOW fine grained andesite with conformable lenses of granite and hybrid granite up to 4" in thickness, tr. Py as fine grains	2719	160.0	162.0	2.0	Tr.		
			2720	170.0	172.0	2.0	Tr.		
			2721	180.0	182.0	2.0	Tr.		
			2722	190.0	192.0	2.0	Tr.		
			2723	201.0	203.0	2.0	Tr.		

Property:

FOOTAGE		DESCRIPTION	SAMPLE NUMBER	FROM	TO	WIDTH feet	Au oz/t		
From	To								
203.0	262.0	INTERMED. TO MAFIC FLOW fine grained andesite with a few narrow medium grained phases, and scattered narrow quartz-carbonate lenses	2724	210.0	212.0	2.0	Tr.		
			2725	220.0	222.0	2.0	Tr.		
			2726	230.0	232.0	2.0	Tr.		
			2727	240.0	242.0	2.0	Tr.		
			2728	250.0	252.0	2.0	Tr.		
262.0	279.0	MAFIC FLOW coarse amphibole grains give a "spotty" appearance to the mafic metavolcanic	2729	270.0	272.0	2.0	Tr.		
279.0	324.0	INTERMED. TO MAFIC FLOW fine grained dark greenish grey andesite, minor chloritic alteration 297.0-304.0: few scattered very small pale pinkish grey garnets	2730	280.0	282.0	2.0	Tr.		
			2731	290.0	292.0	2.0	Tr.		
			2732	300.0	302.0	2.0	Tr.		
			2733	310.0	312.0	2.0	Tr.		
			2734	320.0	322.0	2.0	Tr.		
324.0	386.5	INTERMEDIATE FLOW generally fine grained and massive, light to medium greenish grey andesite with occas. narrow banded section (at 75° to CA), weak sericitic and chloritic alteration throughout and minor lenses with Py seams parallel to schistosity 359.0-362.0: moderately silicified intermed flow with minor Py as fine grains	2735	330.0	332.0	2.0	Tr.		
			2736	340.0	342.0	2.0	Tr.		
			2737	350.0	352.0	2.0	Tr.		
			2738	359.0	362.0	3.0	Tr.		
			2739	370.0	372.0	2.0	Tr.		
			2740	380.0	382.0	2.0	Tr.		
386.5	387.0	QUARTZ VEIN with minor Py as fine grains	2741	386.5	387.0	0.5	Tr.		
387.0	388.0	sheared silicified, intensely sericitized, intermed. flow with up to 10% as Po/Py in seams parallel to banding (at 60° to CA)	2742	387.0	388.0	1.0	Tr.		

Property:

FOOTAGE		DESCRIPTION	SAMPLE NUMBER	FROM	TO	WIDTH feet	Au oz/t		
From	To								
388.0	479.0	INTERMED. TO MAFIC FLOW fine grained, medium to dark greenish grey, massive andesite, weak chloritic alteration	2743	388.0	390.0	2.0	Tr.		
			2744	390.0	392.0	2.0	Tr.		
			2745	400.0	402.0	2.0	Tr.		
			2746	409.0	411.0	2.0	Tr.		
			2747	420.0	422.0	2.0	Tr.		
			2748	430.0	432.0	2.0	Tr.		
			2749	440.0	442.0	2.0	Tr.		
			2750	450.0	452.0	2.0	Tr.		
			2751	460.0	462.0	2.0	Tr.		
			2752	470.0	472.0	2.0	Tr.		

Pilot Harbour

ONEIDA RESOURCES INC.

Property: MAPLE LAKE
 District: SSM
 NTS:
 Township/Area: PILOT HARBOUR
 Claim Number:

Date Started: AUG.8,1988
 Date Completed: AUG.10,1988

Logged By: G. GIGA
 Drilled By: DRILCOR LTD.
 Objective:

Hole No.	OY1-8	Page 1 of 2
Hole Location	Line: 36+00E Station: 6+70S Elevation: Azimuth: 180 deg Dip: -45 deg	
Hole Length	469	Core Size BQ
Dip Tests:	Actual Dip	
	Depth	

FOOTAGE		DESCRIPTION	SAMPLE NUMBER	FROM	TO	WIDTH feet	Au oz/t		
From	To								
0	12.0	CASING							
12.0	200.1	INTERMEDIATE TO MAFIC METAVOLCANICS grey to dark green, very fine grained, foliated, sericite-chlorite bearing, occasionally silicified, infrequent quartz- carbonate-chlorite veins and stringers, foliation ranges from 70-75 deg. cax, sulfides range from <1-5% (py)	1167	17.0	19.0	2.0	Tr.		
			1168	27.0	29.0	2.0	Tr.		
			1169	37.0	39.0	2.0	Tr.		
			1170	47.0	49.0	2.0	Tr.		
			1171	57.0	59.0	2.0	Tr.		
			1172	67.0	69.0	2.0	Tr.		
			1173	77.0	79.0	2.0	Tr.		
			1174	87.0	89.0	2.0	Tr.		
		52.3-54.0: porphyroblastic	1175	97.0	99.0	2.0	Tr.		
			1176	107.0	109.0	2.0	Tr.		
			1177	117.0	119.0	2.0	Tr.		
			1178	125.7	126.7	1.0	Tr.		
			1179	127.0	129.0	2.0	Tr.		
			1180	137.0	139.0	2.0	Tr.		
			1181	147.0	149.0	2.0	Tr.		
			1182	157.0	159.0	2.0	Tr.		
			1183	167.0	169.0	2.0	Tr.		
			1184	176.5	177.5	1.0	Tr.		
			1185	178.0	180.0	2.0	Tr.		

Property: MAPLE LAKE

FOOTAGE		DESCRIPTION	SAMPLE NUMBER	FROM	TO	WIDTH feet	Au oz/t		
From	To								
200.1	299.0	RECRYSTALLIZED INTERMEDIATE TO MAFIC META-VOLCANICS green-grey, fine grained, poorly foliated, sericite-chlorite bearing, appears finer grained at contacts, sulfides range from <1%-1% (py)	1186	185.0	186.0	1.0	Tr.		
			1187	197.0	199.0	2.0	Tr.		
			1188	207.0	209.0	2.0	Tr.		
			1189	217.0	219.0	2.0	Tr.		
			1190	227.0	229.0	2.0	Tr.		
			1191	237.0	239.0	2.0	Tr.		
			1192	244.9	245.9	1.0	Tr.		
			1193	247.0	249.0	2.0	Tr.		
			1194	257.0	259.0	2.0	Tr.		
			1195	267.0	269.0	2.0	Tr.		
			1196	277.0	279.0	2.0	Tr.		
			1197	287.0	289.0	2.0	Tr.		
			1198	297.0	299.0	2.0	Tr.		
			299.0	469.0	INTERMEDIATE TO MAFIC METAVOLCANICS similar to unit at 12.0-200.1, sulfides range from <1%-1% (py), foliation ranges from 70-75 deg. cax (average 70 deg. cax) 401.0-407.0: slightly fractured and sheared 407.0-411.0: porphyroblastic	1199	307.0	309.0	2.0
1200	317.0	319.0				2.0	Tr.		
1501	327.0	329.0				2.0	Tr.		
1502	337.0	339.0				2.0	Tr.		
1503	347.0	349.0				2.0	Tr.		
1504	357.0	359.0				2.0	Tr.		
1505	367.0	369.0				2.0	Tr.		
1506	377.0	379.0				2.0	Tr.		
1507	387.0	389.0				2.0	Tr.		
1508	397.0	399.0				2.0	Tr.		
469.0		END OF HOLE				1509	407.0	409.0	2.0
			1510	417.0	419.0	2.0	Tr.		
			1511	427.0	429.0	2.0	Tr.		
			1512	437.0	439.0	2.0	Tr.		
			1513	447.0	449.0	2.0	Tr.		
			1514	457.0	459.0	2.0	Tr.		
			1515	464.0	465.0	1.0	Tr.		
			1516	467.0	469.0	2.0	Tr.		

Pilot Harbour

ONEIDA RESOURCES INC.

Property: MAPLE LAKE
 District: SSM
 NTS:
 Township/Area: PILOT HARBOUR
 Claim Number:

Date Started: AUG. 10, 1988
 Date Completed: AUG. 12, 1988

Logged By: G. GIGA
 Drilled By: DRILCOR LTD.
 Objective:

Hole No.	OY1-9	Page 1 of 3
Hole Location	Line: 40+40E Station: 16+85N Elevation: Azimuth: 180 deg Dip: -45 deg	
Hole Length	468?	Core Size BQ
Dip Tests: Actual Dip		
	Depth	

FOOTAGE		DESCRIPTION	SAMPLE NUMBER	FROM	TO	WIDTH feet	Au oz/t		
From	To								
0	12.0	CASING							
12.0	194.0	INTERMEDIATE TO MAFIC METAVOLCANIC grey-green, very fine grained to fine grained, foliated, chlorite-sercite-epidote bearing interval, infrequent quartz-carbonate veins and stringers, foliation at 45-50 deg cax, sulfides range from <1%-5% (py,po)	1517	17.0	19.0	2.0	Nil		
			1518	27.0	29.0	2.0	Tr.		
			1519	37.0	39.0	2.0	Nil		
			1520	47.0	49.0	2.0	Nil		
			1521	57.0	59.0	2.0	0.010		
			1522	67.0	69.0	2.0	Tr.		
			1523	77.0	79.0	2.0	Tr.		
		130.0-114.5: porphyroblastic	1524	87.0	89.0	2.0	Tr.		
		209.0-211.0: porphyroblastic	1525	97.0	99.0	2.0	Nil		
			1526	107.0	109.0	2.0	Tr.		
			1527	117.0	119.0	2.0	Tr.		
			1528	124.5	125.5	1.0	Nil		
			1529	129.0	131.0	2.0	Tr.		
			1530	137.0	139.0	2.0	Tr.		
			1531	147.0	149.0	2.0	Nil		
			1532	157.0	159.0	2.0	Nil		
			1533	167.0	169.0	2.0	Tr.		
			1534	177.0	179.0	2.0	Tr.		
			1535	187.0	189.0	2.0	Nil		

Property: MAPLE LAKE

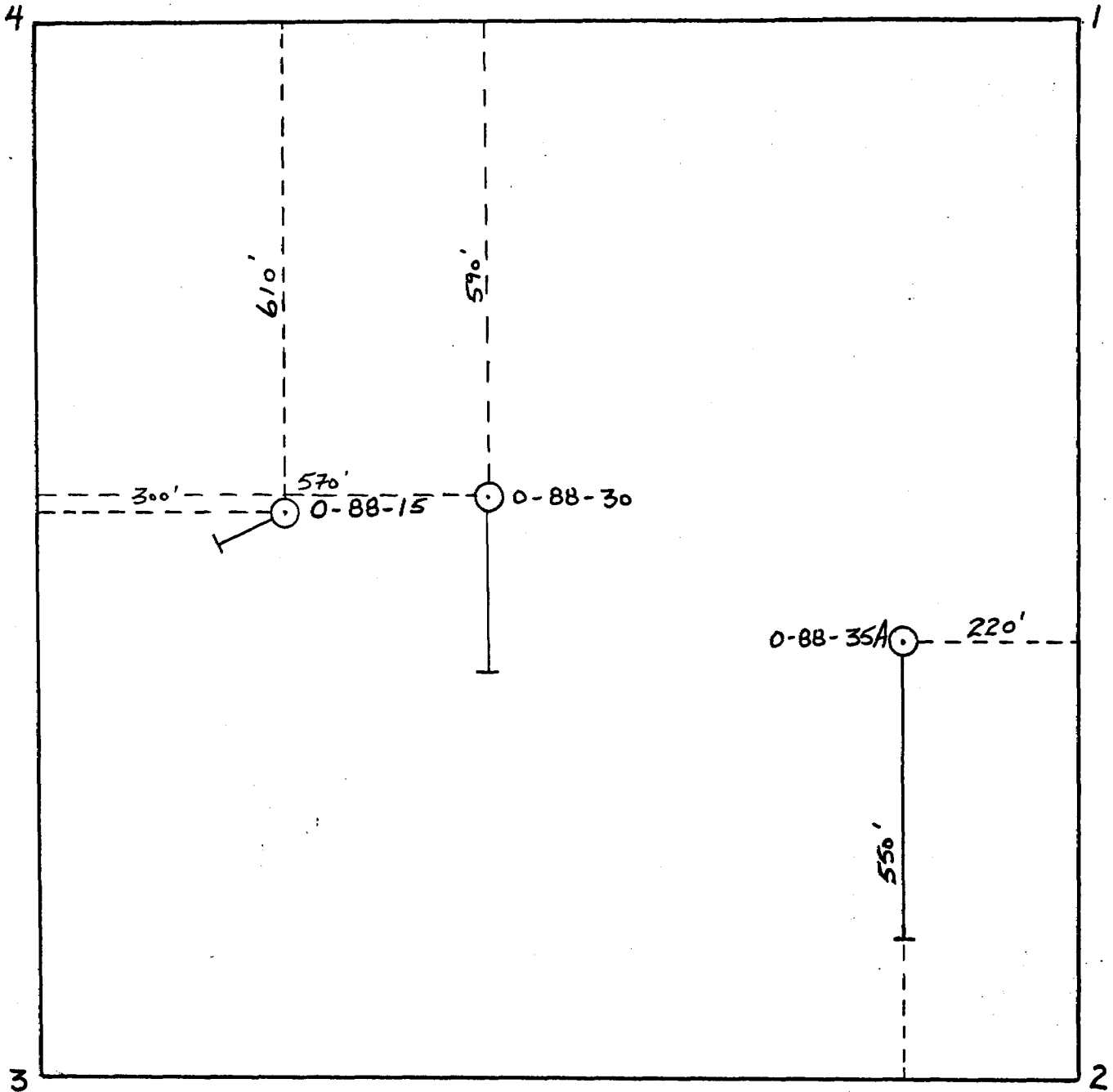
FOOTAGE		DESCRIPTION	SAMPLE NUMBER	FROM	TO	WIDTH feet	Au oz/t		
From	To								
194.0	208.8	ALTERED INTERMEDIATE TO MAFIC METAVOLCANIC light green, highly altered variety of unit at 29.0-194.0, sulfides range from <1%-1%	1536	194.0	196.0	2.0	Tr.		
			1537	196.0	198.0	2.0	Nil		
			1538	198.0	200.0	2.0	Nil		
			1539	200.0	202.0	2.0	Nil		
			1540	202.0	204.0	2.0	Nil		
			1541	204.0	206.0	2.0	Nil		
			1542	206.0	208.8	2.8	Nil		
208.8	244.0	INTERMEDIATE TO MAFIC METAVOLCANIC similar to unit at 12.0-194.0	1543	217.0	219.0	2.0	Tr.		
			1544	227.0	229.0	2.0	Nil		
			1545	237.0	239.0	2.0	Nil		
244.0	247.0	ALTERED INTERMEDIATE TO MAFIC METAVOLCANIC dark green, highly sheared and altered variety of unit at 12.0-194.0, appears very broken	1546	244.0	247.0	3.0	Tr.		
247.0	401.5	INTERMEDIATE TO MAFIC METAVOLCANIC similar to unit at 12.0-194.0	1547	247.0	249.0	2.0	Nil		
			1548	257.0	259.0	2.0	Nil		
			1549	267.0	269.0	2.0	Nil		
			1550	277.0	279.0	2.0	Nil		
			1551	287.0	289.0	2.0	Nil		
			1552	290.5	293.0	2.5	Nil		
			1553	299.0	301.0	2.0	Nil		
			1554	307.0	309.0	2.0	Tr.		
			1555	317.0	319.0	2.0	Nil		
			1556	327.0	329.0	2.0	Tr.		
			1557	337.0	339.0	2.0	Tr.		
			1558	345.5	346.5	1.0	Tr.		
			1559	357.0	359.0	2.0	0.012		
			1560	367.0	369.0	2.0	Nil		
1561	377.0	379.0	2.0	Tr.					
1562	387.0	389.0	2.0	Nil					
1563	397.0	399.0	2.0	Nil					

Property: MAPLE LAKE

FOOTAGE		DESCRIPTION	SAMPLE NUMBER	FROM	TO	WIDTH feet	Au oz/t		
From	To								
401.5	410.0	RECRYSTALLIZED INTERMEDIATE TO MAFIC META-VOLCANIC green, medium grained, sericite-chlorite bearing unit, infrequent quartz-carbonate-chlorite stringers and veins, foliation ranges from 45-50 deg cax, sulfides range from <1%-1% (py)	1564	407.0	409.0	2.0	Tr.		
410.0	467.0	INTERMEDIATE TO MAFIC METAVOLCANIC similar to unit at 12.0-194.0	1565	419.0	421.0	2.0	Tr.		
			1566	429.0	431.0	2.0	Tr.		
			1567	439.0	441.0	2.0	Nil		
			1568	449.0	451.0	2.0	Nil		
			1569	459.0	461.0	2.0	Nil		
467.0		END OF HOLE							

Blot Harbour

CLAIM NUMBER SSM 946948



SCALE: 1" = 200'

DOCUMENT No.
W9005-067



41N13NE0016 11 PILOT HARBOUR

900

Mining Act Report of Work

Name and Address of Recorded Holder PLACER DOME INC. SUITE 3500, BOX 350, 18M TOWER, TORONTO DOMINION CENTRE, TORONTO 108 PERREAVUE, VAL D'OR, QUE. J9P 2H5 ONT.	Prospector's Licence No. 75022 T.837
Telephone No. (416) 868-6060 (819) 825-4343	

Summary of Distribution of Credits and Work Performance

MSK 1N3

Mining Division SSM	Mining Claim			Mining Claim			Mining Claim		
	Prefix	Number	Work Days Cr.	Prefix	Number	Work Days Cr.	Prefix	Number	Work Days Cr.
Township or Area (Wawa) PILOT HARBOUR DAVID LAKE									
Total Assessment Credits Claimed 11, 197.75	see attached list:								
Type of Work Performed (Check one only) <input type="checkbox"/> Manual Work <input type="checkbox"/> Shaft Sinking Drifting or other <input type="checkbox"/> Lateral Work <input type="checkbox"/> Mechanical equipment <input type="checkbox"/> Power Stripping other than Manual (maximum credit allowed - 100 days per claim) <input checked="" type="checkbox"/> Diamond or other Core drilling <input type="checkbox"/> Core Specimens	SCHEDULE 1			MAPLE LAKE			PROPERTY		

Dates when work was performed From: APRIL 25, 1988 To: OCT. 18, 1988	Total No. of Days Performed 11, 197.75	Total No. of Days Claimed 11, 197.75	Total No. of Days to be Claimed at a Future Date —
---	---	---	---

All the work was performed on Mining Claim(s): Indicate no. of days performed on each claim. (See note No. 1 on reverse side)	Mining Claim 894401	No. of Days 2791	Mining Claim 894403	No. of Days 975	Mining Claim 894404	No. of Days 272	Mining Claim 946889	No. of Days 358			
Mining Claim	No. of Days	Mining Claim	No. of Days	Mining Claim	No. of Days	Mining Claim	No. of Days				
894399	740	946896	489	946947	641	946948	1106.75	946949	302	946953	460

Required Information eg. type of equipment, Names, Addresses, etc. (See Table on reverse side)
If space below is insufficient, attach schedules with required information and location sketches

OLYMPIC DRILLING CONSULTANTS
200, 2695 GRANVILLE ST.
VANCOUVER, B.C.
V6B 3H4
(604) 736-8422
OWNER: RAY FALARDEAU

ONTARIO GEOLOGICAL SURVEY
ASSESSMENT FILES
OFFICE
MAR 27 1990
RECEIVED

RECORDED
MAR 12 1990
Receipt No. _____

22P JHP
HOURS
0-88-15
0-88-24
0Y-1-2 to 8
ON-1-88 to ON-5-88
TOTAL: 27 HOURS

Certification of Beneficial Interest * (See Note No. 2 on reverse side)

I hereby certify that, at the time the work was performed, the claims covered in this report of work were recorded in the current recorded holder's name or held under a beneficial interest by the current recorded holder.

Date: March 8, 1990
Recorded Holder or Agent (Signature): Zoran Madon

Certification Verifying Report of Work

I hereby certify that I have a personal and intimate knowledge of the facts set forth in the Report of Work annexed hereto, having performed the work or witnessed same during and/or after its completion and the annexed report is true.

Name and Address of Person Certifying
ZORAN MADON 188 PERREAVUE VAL D'OR, QUE. J9P 2H5

Telephone No. (819) 825-4343 Date March 8, 1990 Certified By (Signature) Zoran Madon

For Office Use Only

Work Assignments	Received Stamp SAULT STE. MARIE MINING DIV. RECEIVED MAR 12 1990 A.M. 7:8 9:10 11:12 1:2 3:4 5:6 P.M.
------------------	---

Table of Information

Type of Work	Specific Information per type	Other Information	Attachment
Manual Work Subsection 77(18)	Nil	Names and addresses of workers who performed manual work/operated equipment, together with dates and hours of employment.	Location Sketch: these are required to show the location of work in relation to the nearest claim post. Sketches should be drawn to scale where possible and the dimensions of the area worked should be noted. Indicate on the sketch whether this work is an expansion of previously recorded work.
Shaft Sinking, Drifting or other Lateral Work Subsection 77(17)			
Mechanical equipment Subsection 77(8)	Type of equipment (Brand Name)	Names and addresses of owner or operator together with dates when drilling/stripping done.	Location Sketch (required in duplicate)
Power Stripping other than Manual Subsection 77(14)	Type of equipment (Brand Name) and amount expended. Note: Proof of actual cost (receipts) must be submitted within 30 days of recording.		
Diamond or other core drilling Subsections 77(5) and 76(3)	Signed core logs (in duplicate) showing footage, diameter of core, number and angles of holes.		
Core Specimens Subsection 77(6)			

Note No. 1

Where work, e.g. diamond drilling, power stripping crosses a claim boundry, indicate the number of assessment days performed on each claim.

Where the work performed is greater than the work applied to contiguous claims, specify the claim(s) that the work assignment should be calculated on.

Note No. 2

Examples of beneficial interest are unrecorded transfers, option agreements, memorandum of agreements, etc., with respect to the mining claims.

CLAIM	DAYS
946954	951
946955	704
946956	300
946957	960
946979	1480

RECORDED
MAY 18 1988

RECORDED
MAY 18 1988

RECORDED
MAY 18 1988

PROJ NAME	TOWNSHIP	TAG NO	#OF CLAIMS	WORK DIST.
MAPLE LAKE	PILOT HARBOUR	SSM 894394	1	124.00
MAPLE LAKE	PILOT HARBOUR	SSM 894395	1	124.00
MAPLE LAKE	PILOT HARBOUR	SSM 894399	1	124.00
MAPLE LAKE	PILOT HARBOUR	SSM 894400	1	124.00
MAPLE LAKE	PILOT HARBOUR	SSM 894401	1	161.75
MAPLE LAKE	PILOT HARBOUR	SSM 894402	1	124.00
MAPLE LAKE	PILOT HARBOUR	SSM 894403	1	124.00
MAPLE LAKE	PILOT HARBOUR	SSM 894404	1	124.00
MAPLE LAKE	PILOT HARBOUR	SSM 946869	1	124.00
MAPLE LAKE	PILOT HARBOUR	SSM 946870	1	124.00
MAPLE LAKE	PILOT HARBOUR	SSM 946871	1	124.00
MAPLE LAKE	PILOT HARBOUR	SSM 946872	1	124.00
MAPLE LAKE	PILOT HARBOUR	SSM 946873	1	124.00
MAPLE LAKE	PILOT HARBOUR	SSM 946874	1	124.00
MAPLE LAKE	PILOT HARBOUR	SSM 946875	1	124.00
MAPLE LAKE	PILOT HARBOUR	SSM 946876	1	124.00
MAPLE LAKE	PILOT HARBOUR	SSM 946877	1	124.00
MAPLE LAKE	PILOT HARBOUR	SSM 946878	1	124.00
MAPLE LAKE	PILOT HARBOUR	SSM 946879	1	124.00
MAPLE LAKE	PILOT HARBOUR	SSM 946880	1	124.00
MAPLE LAKE	PILOT HARBOUR	SSM 946881	1	124.00
MAPLE LAKE	PILOT HARBOUR	SSM 946882	1	124.00
MAPLE LAKE	PILOT HARBOUR	SSM 946889	1	124.00
MAPLE LAKE	PILOT HARBOUR	SSM 946890	1	124.00
MAPLE LAKE	PILOT HARBOUR	SSM 946891	1	124.00
MAPLE LAKE	DAVID LAKE	SSM 946892	1	124.00
MAPLE LAKE	DAVID LAKE	SSM 946893	1	124.00
MAPLE LAKE	PILOT HARBOUR	SSM 946894	1	124.00
MAPLE LAKE	PILOT HARBOUR	SSM 946895	1	124.00
MAPLE LAKE	PILOT HARBOUR	SSM 946896	1	124.00
MAPLE LAKE	PILOT HARBOUR	SSM 946897	1	124.00
MAPLE LAKE	PILOT HARBOUR	SSM 946898	1	124.00
MAPLE LAKE	PILOT HARBOUR	SSM 946899	1	124.00
MAPLE LAKE	DAVID LAKE	SSM 946900	1	124.00
MAPLE LAKE	PILOT HARBOUR	SSM 946901	1	124.00
MAPLE LAKE	PILOT HARBOUR	SSM 946902	1	124.00
MAPLE LAKE	PILOT HARBOUR	SSM 946903	1	124.00
MAPLE LAKE	DAVID LAKE	SSM 946915	1	124.00
MAPLE LAKE	PILOT HARBOUR	SSM 946916	1	124.00
MAPLE LAKE	PILOT HARBOUR	SSM 946917	1	124.00
MAPLE LAKE	PILOT HARBOUR	SSM 946918	1	124.00
MAPLE LAKE	PILOT HARBOUR	SSM 946919	1	124.00
MAPLE LAKE	PILOT HARBOUR	SSM 946920	1	124.00
MAPLE LAKE	PILOT HARBOUR	SSM 946921	1	124.00
MAPLE LAKE	DAVID LAKE	SSM 946922	1	124.00
MAPLE LAKE	DAVID LAKE	SSM 946923	1	124.00
MAPLE LAKE	PILOT HARBOUR	SSM 946924	1	124.00
MAPLE LAKE	PILOT HARBOUR	SSM 946925	1	124.00
MAPLE LAKE	PILOT HARBOUR	SSM 946926	1	124.00
MAPLE LAKE	PILOT HARBOUR	SSM 946927	1	124.00
MAPLE LAKE	PILOT HARBOUR	SSM 946928	1	124.00
MAPLE LAKE	PILOT HARBOUR	SSM 946929	1	124.00
MAPLE LAKE	DAVID LAKE	SSM 946930	1	124.00

PROJ NAME	TOWNSHIP	TAG NO	#OF CLAIMS	WORK DIST.
MAPLE LAKE	PILOT HARBOUR	SSM 946931	1	124.00
MAPLE LAKE	PILOT HARBOUR	SSM 946932	1	124.00
MAPLE LAKE	PILOT HARBOUR	SSM 946947	1	124.00
MAPLE LAKE	PILOT HARBOUR	SSM 946948	1	124.00
MAPLE LAKE	PILOT HARBOUR	SSM 946949	1	124.00
MAPLE LAKE	PILOT HARBOUR	SSM 946950	1	124.00
MAPLE LAKE	PILOT HARBOUR	SSM 946951	1	124.00
MAPLE LAKE	PILOT HARBOUR	SSM 946952	1	124.00
MAPLE LAKE	PILOT HARBOUR	SSM 946953	1	124.00
MAPLE LAKE	PILOT HARBOUR	SSM 946954	1	124.00
MAPLE LAKE	PILOT HARBOUR	SSM 946955	1	124.00
MAPLE LAKE	PILOT HARBOUR	SSM 946956	1	124.00
MAPLE LAKE	PILOT HARBOUR	SSM 946957	1	124.00
MAPLE LAKE	PILOT HARBOUR	SSM 946958	1	124.00
MAPLE LAKE	PILOT HARBOUR	SSM 946959	1	124.00
MAPLE LAKE	PILOT HARBOUR	SSM 946960	1	124.00
MAPLE LAKE	PILOT HARBOUR	SSM 946961	1	124.00
MAPLE LAKE	PILOT HARBOUR	SSM 946962	1	124.00
MAPLE LAKE	PILOT HARBOUR	SSM 946963	1	124.00
MAPLE LAKE	PILOT HARBOUR	SSM 946964	1	124.00
MAPLE LAKE	PILOT HARBOUR	SSM 946979	1	124.00
MAPLE LAKE	PILOT HARBOUR	SSM 946980	1	124.00
MAPLE LAKE	PILOT HARBOUR	SSM 946981	1	124.00
MAPLE LAKE	PILOT HARBOUR	SSM 946982	1	124.00
MAPLE LAKE	PILOT HARBOUR	SSM 946983	1	124.00
MAPLE LAKE	PILOT HARBOUR	SSM 946984	1	124.00
MAPLE LAKE	PILOT HARBOUR	SSM 946985	1	124.00
MAPLE LAKE	PILOT HARBOUR	SSM 946986	1	124.00
MAPLE LAKE	PILOT HARBOUR	SSM 946987	1	124.00
MAPLE LAKE	PILOT HARBOUR	SSM 946988	1	124.00
MAPLE LAKE	PILOT HARBOUR	SSM 946989	1	124.00
MAPLE LAKE	PILOT HARBOUR	SSM 946990	1	124.00
MAPLE LAKE	PILOT HARBOUR	SSM 946991	1	124.00
MAPLE LAKE	PILOT HARBOUR	SSM 946992	1	124.00
MAPLE LAKE	PILOT HARBOUR	SSM 946993	1	124.00
MAPLE LAKE	PILOT HARBOUR	SSM 946994	1	124.00
MAPLE LAKE	PILOT HARBOUR	SSM 946995	1	124.00

90* 11197.75*

ONEIDA RESOURCES - MAPLE LAKE

DIAMOND DRILLING

DRILL HOLE	TOTAL FT.	CLAIM	DAYS CR.	CLAIM	DAYS CR.
0-88- 24	362	894401	362		
0-88- 27	367	894401	367		
0-88- 28	537	894401	537		
0-88- 29	252	894401	252		
0-88- 31	302	894401	302		
0-88- 32	502	894401	502		
OY 1- 9	469	894401	469		
TOTAL			2791		
OY 1- 6	499	894403	227	894404	272
OY 1- 7	279	894403	279		
OY 1- 8	469	894403	469		
TOTAL			975		
OY 1- 1	499	946889	35	894399	464
OY 1- 2	599	946889	323	894399	276
TOTAL			358	TOTAL	740
OY 1- 3	489	946896	489		
0-88- 33	501	946947	501		
0-88- 34	427	946947	140	946948	287
TOTAL			641		
0-88- 15	67	946948	16.75		
0-88- 30	302	946948	302		
0-88- 35A	501	946948	501		
TOTAL			819.75		
0-88- 25	302	946949	302		
DN -4-88	437	946954	169	946953	268
DN -5-88	479	946954	287	946953	192
TOTAL			456	TOTAL	460
DN -1-88	329	946955	186	946954	143
DN -2-88	439	946955	317	946954	122
DN -3-88	431	946955	201	946954	230
TOTAL			704	TOTAL	495
0-88- 26	300	946956	300		
OY 1- 4	599	946957	599		
OY 1- 5	509	946957	361	946979	148
TOTAL			960		

11248

LEGEND

- HIGHWAY AND ROUTE NO.
- OTHER ROADS
- TRAILS
- SURVEYED LINES
- LOTS, MINING CLAIMS, PARCELS, ETC.
- UNSURVEYED LINES
- PARCEL BOUNDARY
- MINING CLAIMS ETC.
- RAILWAY AND RIGHT OF WAY
- UTILITY LINES
- NON PERENNIAL STREAM
- FLOODING OR FLOODING RIGHTS
- SUBDIVISION OR COMPOSITE PLAN
- RESERVATIONS
- ORIGINAL SHORELINE
- MAISH OR MUSKEG
- MINES
- TRAVERSE MONUMENT

DISPOSITION OF CROWN LANDS

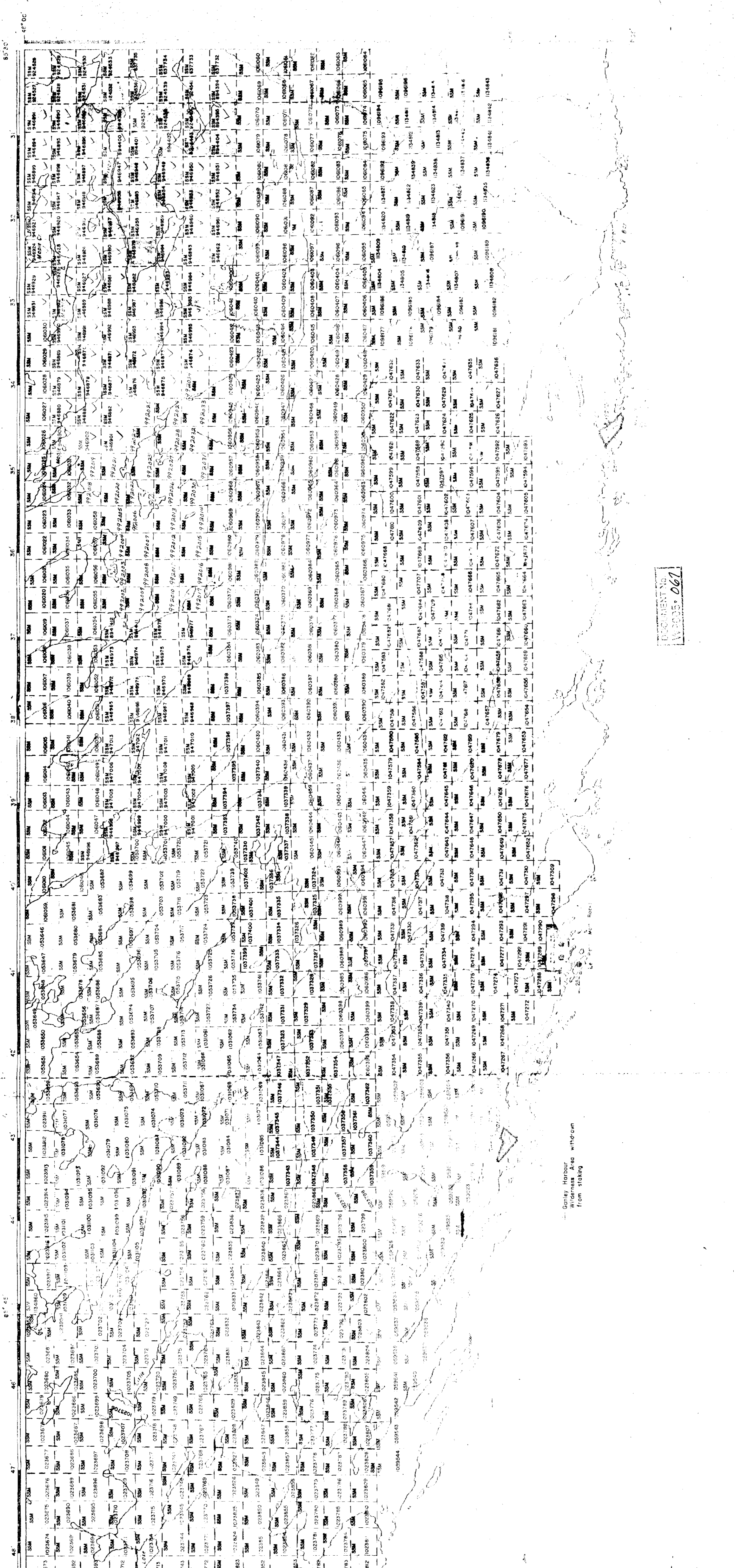
- TYPE OF DOCUMENT
- PATENT, SURFACE & MINING RIGHTS
 - SURFACE RIGHTS ONLY
 - MINING RIGHTS ONLY
 - LEASE SURFACE & MINING RIGHTS
 - SURFACE RIGHTS ONLY
 - MINING RIGHTS ONLY
 - LICENCE OF OCCUPATION
 - ORDER-IN-COUNCIL
 - RESERVATION
 - CANCELLED
 - SAND & GRAVEL
- NOTE: MINING RIGHTS IN PARCELS PATENTED PRIOR TO MAY 15, 1933 VESTED IN ORIGINAL PATENTEE BY THE PUBLIC LANDS ACT, 1930, CHAP. 380, SEC. 6, SUBSEC. 1.

PILOT HARBOUR

M.N.R. ADMINISTRATIVE DISTRICT
 WAWA
 MINING DIVISION
 SAULT STE. MARIE
 LAND TITLES / REGISTRY DIVISION
 THUNDER BAY

Ministry of Natural Resources and Mines
 Ontario

DATE: JULY 1966
 NUMBER: G-2700



DOCUMENT NO. W-3005-067

TRAIL TO THE WAVE ALL ROUND

Gunley Harbour
 Wilderness Area
 From staking

