

41N13SW0011 41N13SW0012A1 MICHIPICOTEN ISLAND

010

Diamond Drilling

Area of MICHIPICOTEN ISLAND

Report N^o 18

Work performed by: Advance Red Lake Gold Mines Ltd.

| Claim N ^o | Hole N ^o | Footage | Date | Note |
|----------------------|---------------------|-------------|------|------|
| SSM 75704 | 7 | 1505.0' | 1966 | |
| | 8 | 1322.0' | 1966 | |
| SSM 75584 | 9 | 371.0' | 1966 | |
| | <u>3</u> | <u>3198</u> | | |

Notes:

DIAMOND DRILL RECORD

PROPERTY Advance Michipicoten

HOLE NO. 7

SHEET NUMBER 1

SECTION FROM 0 TO 181

STARTED Aug 9 1966

LATITUDE 13050 N

DATUM _____

COMPLETED Aug 22 1966

DEPARTURE 4380 W

BEARING N10W mag.

ULTIMATE DEPTH 1505

ELEVATION 220

DIP 0, 50° 1000-55°, 1500-56°

PROPOSED DEPTH 1500

| DEPTH FEET | FORMATION | SAMPLE NO. | WIDTH OF SAMPLE | GOLD g | SLUDGE GOLD g |
|------------|---|------------|-----------------|--------|---------------|
| 0-10 | Casing | | | | |
| 10-58 | Amygduloidal Basalt 10 ft. grades into coarse Basalt with large amygdules of chlorite | | | | |
| 58-100 | Amygduloidal Basalt 35 ft. Amygdules mostly calcite with a little analcite grades into med. grained basalt with large amygdules chlorite | | | | |
| 100-122 | Amygduloidal Basalt 10 ft. Amygdules largely calcite but edged with analcite and/or chlorite. Followed by med. grained basalt somewhat carbonated to pale green rock. Some calc along cracks. | | | | |
| 122-181 | Amygduloidal Basalt 15 ft. Rather few amygdules mostly calcite with edging of analcite - somewhat carbonated. Grades into med grained Basalt with chloride amygdules, then coarse gabbroid-chilled base 4 feet. Carbonate alteration. | | | | |

N.M.P. TORONTO-STOCK FORM NO. 901 REV. 12/51

DRILLED BY Canadian Inq. year 1966

SIGNED H. P. Robinson

DIAMOND DRILL RECORD

PROPERTY Advance Midkipicaten HOLE NO. 7 continued

SHEET NUMBER 2 SECTION FROM 181 TO 321 STARTED _____

LATITUDE _____ DATUM _____ COMPLETED _____

DEPARTURE _____ BEARING _____ ULTIMATE DEPTH _____

ELEVATION _____ DIP _____ PROPOSED DEPTH _____

| DEPTH FEET | FORMATION | SAMPLE NO. | WIDTH OF SAMPLE | GOLD g | SLUDGE GOLD g | | | |
|----------------------|---|------------|-----------------|--------|---------------|--|--|--|
| 181 - 211 Flow #5 | Amygduloidal Basalt with calc & chlorite amygdules followed by 28 ft med grained basalt with pale green carbonate alteration. | | | | | | | |
| 211 - 256 Flow #6 | Amygduloidal Basalt Calc stringers at 214, 219, 220, 225, 233, 238, 239 Amygdules green (chlorite or prehnite?) with calcite centers. Increasing analcite (pink) in veinlets. | | | | | | | |
| 256 - 276 Flow #7 | Amygduloidal Top with calc amygdules edged with chlorite. A few salmon colored amygdules (analcite?) with radiating texture. Grades into medium grained basalt. | | | | | | | |
| 276 - 290 Flow #8 | Amygduloidal Basalt 10 ft grades into med. grained basalt. Calcite-analcite stringers at 276. | | | | | | | |
| 290 - 321 Flow #9 | Amygd. Basalt. Calc-analcite stringers at 291, 309, 311. Specks of pyrite. Grades into fine grained basalt. | | | | | | | |

N.M.P. TORONTO-STOCK FORM NO 301 REV 12/51

DRILLED BY Canadian Druggear Ltd

SIGNED H. J. Robinson

DIAMOND DRILL RECORD

PROPERTY Advance Michipicoten HOLE NO. 7 continued

SHEET NUMBER 3 SECTION FROM 321 TO 472 STARTED _____
 LATITUDE _____ DATUM _____ COMPLETED _____
 DEPARTURE _____ BEARING _____ ULTIMATE DEPTH _____
 ELEVATION _____ DIP _____ PROPOSED DEPTH _____

| DEPTH FEET | FORMATION | SAMPLE NO. | WIDTH OF SAMPLE | GOLD g | SLUDGE GOLD g |
|----------------------|--|------------|-----------------|--------|---------------|
| 321 - 355 | Amygd. Basalt Calc-Analcite stringer at 325, 329, 335 14 ft Amygd. Basalt | | | | |
| #10 Flow | Amygdules mixed calc & Analcite some chlorite or prehnite (?). Grades into med. grained basalt. Calc stringer at 351. Fine grained at base of flow | | | | |
| 355 - 384 | Amygd. Basalt 8 feet stringers at 359, 361. Grades into coarse basalt near base | | | | |
| #11 Flow | | | | | |
| 384 - 432 | Amygd. Basalt Calc-analcite stringer at 387, 394. Amygdules mostly soft dark green chlorite. Calc stringers at 401, 402, 410, 411, 415, 417, 418. This is a shattered area grades into coarse gabbroid section beyond 419. Chilled at base | | | | |
| #12 Flow | | | | | |
| 432 - 472 | Amygd. Basalt. Rather few amygdules mostly chlorite. Grades into coarse basalt | | | | |
| #13 Flow | | | | | |

DRILLED BY _____

SIGNED _____

DIAMOND DRILL RECORD

PROPERTY Adrance Michipicoten HOLE NO. 7 continued

SHEET NUMBER 4 SECTION FROM 472 TO 619 STARTED _____
 LATITUDE _____ DATUM _____ COMPLETED _____
 DEPARTURE _____ BEARING _____ ULTIMATE DEPTH _____
 ELEVATION _____ DIP _____ PROPOSED DEPTH _____

| DEPTH FEET | FORMATION | SAMPLE NO. | WIDTH OF SAMPLE | GOLD \$ | SLURRY GOLD \$ |
|-----------------------|--|----------------------|-----------------|---------|----------------|
| 472 - 490 #14 Flow | Amygd. Basalt 5 ft. Amygdules with chlorite rims + calcite centers. Grades into med. grained basalt | | | | |
| 490 - 533 #15 Flow | Amygd. Basalt 8 ft. Rather brownish from carbonate alteration or iron oxide increase. Grades into Basalt with large amygdules chlorite then coarse gabbroid basalt. Calc-analcite stringers at 508, 517, 518 | | | | |
| 533 - 563 #16 Flow | Amygd. Basalt 13 ft. Stringers at 536, 545, 548. Grades into med. grained basalt with large chlorite amygd. | | | | |
| 563 - 587 #17 Flow | Amygd. Basalt 2 ft. Spot Copper (1/8") at 564"2 occurs in an irregular fracture green & white calcite. Grades into med. grained basalt with large blotches of chlorite (amygdules?) | not sampled specimen | | | |
| 587 - 619 #18 Flow | Small amygd. Top with chlorite amygdules. Grades into med. gr. Basalt. Calc-analcite at 603, 604, 609. | | | | |

N.M.P. TORONTO-STOCK FORM NO 501 REV 12/51

DRILLED BY Canadian Logging Ltd

SIGNED H. J. Johnson

DIAMOND DRILL RECORD

PROPERTY Advance Michipicoten HOLE NO. 7 continued

SHEET NUMBER 5 SECTION FROM 619 TO 946 STARTED _____

LATITUDE _____ DATUM _____ COMPLETED _____

DEPARTURE _____ BEARING _____ ULTIMATE DEPTH _____

ELEVATION _____ DIP _____ PROPOSED DEPTH _____

| DEPTH FEET | FORMATION | SAMPLE NO | WIDTH OF SAMPLE | GOLD \$ | SLUDGE GOLD \$ | Copper % |
|------------|---|------------|-----------------|------------------------|----------------|--------------|
| 619 - 704 | Amygd. Basalt. Brownish alteration 14 ft wide. Grades into coarse gabbroid basalt like copper bearing gabbroid basalt in Hole #1. Native copper at 667, 693 (691-694). Split sample Calc at 704 Cu at 687. | 094 | 3.0 | 691-694 | | 0.14 |
| #19 Flow | | | | | | |
| 704 - 785 | Amygd. Basalt 10 feet. Few amygdulons. Some pistachio green (prehnite ²). Followed by coarse gabbroid basalt with some abundant amygdulons. Native copper at 702 1/2, 712, 720, 716, 748, 758, 765, 776, 777. Rock is coarse with large crystals of magnetite. Looks like rock in #1 Hole. | 095 096 | 3.0 2.5 | 705-708 775-779 1/2 | | 0.19 0.37 |
| #20 Flow | | | | | | |
| 785 - 820 | Amygduloidal Basalt about 15 feet. A few amygdulons up to 810. Poor contact at 820. No 21 Flow may be a part of #22 Flow. Med grained basalt at 825. Base drilled at 845 | | | | | |
| #21 Flow | | | | | | |
| 820 - 846 | A few irregular calc stringers | | | | | |
| #22 Flow | | | | | | |

(Investigated method of sampling by X-Ray assay lab and found screenings of native copper assayed separately)

DRILLED BY Canadian Logging Ltd

SIGNED H.S. Robinson

DIAMOND DRILL RECORD

PROPERTY Advance Michipicoten HOLE NO. 7 continued

SHEET NUMBER 6 SECTION FROM 846 TO 1505 STARTED _____
 LATITUDE _____ DATUM _____ COMPLETED _____
 DEPARTURE _____ BEARING _____ ULTIMATE DEPTH _____
 ELEVATION _____ DIP _____ PROPOSED DEPTH _____

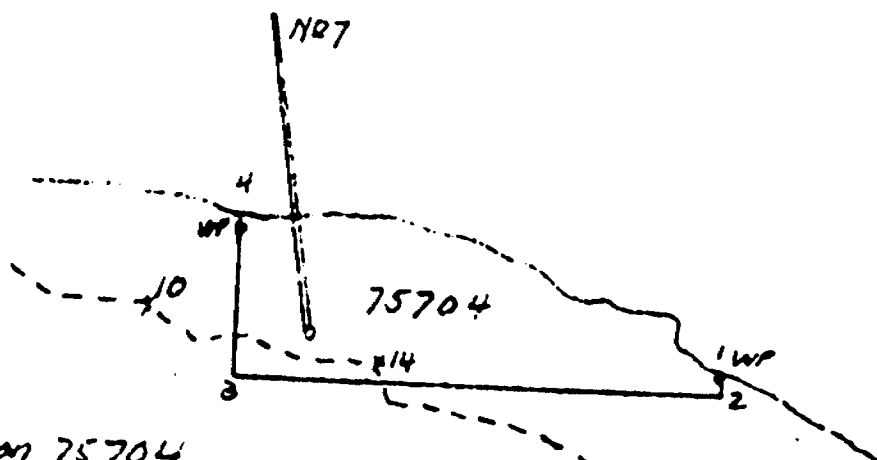
| DEPTH FEET | FORMATION | SAMPLE NO | WIDTH OF SAMPLE | GOLD g | SLUDGE GOLD † | Copper †/g |
|---|--|-----------|-----------------|--------------|---------------|------------|
| 846-1505 | Red Felsite, sharp contact at 846. Many rectangular feldspar phenocrysts in felsite. Fault 960 to 971 with 10% core recovery. Small fault @ 986. Slightly schistose 1020-1025, 1169. Broken ground at 1385. Native copper in cracks with calcite at 850, 855, 876, 1225, 1278. | 104 | 5.0 | 845 to 850 | 0.06 | |
| | | 103 | 5.0 | 850 to 855 | 0.04 | |
| | | 102 | 5.0 | 1275 to 1280 | 0.04 | |
| <p>Only 495' can be applied, remainder of this hole under water of Lake Superior.</p> <p style="text-align: right;">JY.</p> | | | | | | |

N.M.P. TORONTO-STOCK FORM NO 501 REV 12/51

DRILLED BY Canadian Druggers

SIGNED At 10/28

LAKE SUPERIOR



495 ft on 75704
1020 ft in Lake

See Section
495 FT on 75704
1010 FT in lake

ADVANCE RED LAKE GM

HOLE NR-7 #7

N 10 W 1505 FT 1505 FT

N 10 W 1000 FT = 500 feet

1" = 500 FT

DIAMOND DRILL RECORD

PROPERTY Advance Michipicoten

HOLE NO. 8

SHEET NUMBER 1

SECTION FROM 0 TO 198

STARTED Aug 23 1966

LATITUDE 13050 N

DATUM _____

COMPLETED Sept 2 1966

DEPARTURE 4380 W

BEARING N 10 W mag.

ULTIMATE DEPTH 1322

ELEVATION 220 above L. Superior ^{DIP} at 0-80° at 1000 78° at 1920 79° PROPOSED DEPTH 1500

| DEPTH FEET | FORMATION | SAMPLE NO. | WIDTH OF SAMPLE | GOLD \$ | SLURRY GOLD \$ |
|------------|--|------------|-----------------|---------|----------------|
| 0-5 | Casing | | | | |
| 6-25 | Amygd. Basalt 5 ft. grades into med grained basalt with chlorite amygdules | | | | |
| Flow A | | | | | |
| 25-82 | Amygd. Basalt 10 feet grades into med. grained basalt. Base chilled 2 feet. | | | | |
| Flow B | | | | | |
| 82-95 | Amygd Basalt 5 feet grades into dense fine grained basalt. Some analcite & calcite in amygdules. | | | | |
| Flow C | | | | | |
| 95-117 | Amygd. Basalt 8 feet grades into med. grained basalt with 1 ft chilled base. Amygdules mostly chlorite | | | | |
| Flow D | | | | | |
| 117-167 | Amygd. Basalt 7 feet mostly calcite amygdules grades into med. grained basalt chilled at base. Calc stringer at 147. Rather gabbroid near base | | | | |
| Flow E | | | | | |
| 167-198 | Amygd. Basalt 18 feet. Amygdules mixed calc-analcite and chlorite. Pnch Calc-analcite stringer at 185 parallel to core | | | | |
| Flow F | | | | | |

N.M.P. TORONTO-STOCK FORM NO 801 REV 12/81

DRILLED BY Canadian Voregear Ltd

SIGNED HS Robinson

DIAMOND DRILL RECORD

PROPERTY Advance Michipicoten HOLE NO. 8 continued

SHEET NUMBER 2 SECTION FROM 198 TO 605 STARTED _____

LATITUDE _____ DATUM _____ COMPLETED _____

DEPARTURE _____ BEARING _____ ULTIMATE DEPTH _____

ELEVATION _____ DIP _____ PROPOSED DEPTH _____

| DEPTH FEET | FORMATION | SAMPLE NO. | WIDTH OF SAMPLE | GOLD g | SLUDGE GOLD g | | | |
|------------|---|------------|-----------------|--------|---------------|--|--|--|
| 198 - 226 | Amygd. Basalt 7 ft. Calc + Chlorite veinlet at 198. Calc veinlet 201. grades to med. grained basalt at 223 calc vein 1" | | | | | | | |
| Flow G | | | | | | | | |
| 226 - 249 | Amygd. basalt. Calc + Chlorite amygdules grades to med. grained basalt with chilled base | | | | | | | |
| Flow H | | | | | | | | |
| 249 - 281 | Amygd. basalt. May be two flows with contact 262. Med. grained base at 275 to 281. | | | | | | | |
| Flow I. | | | | | | | | |
| " J. | | | | | | | | |
| 281 - 313 | Amygd. basalt 19 feet. Green amygdules at 294 (prehnite?) Spot copper at 294 grades into fine grained basalt beyond 300. May be several flows | | | | | | | |
| Flow K | | | | | | | | |
| 313 - 350 | Amygd. Basalt. 10 ft. Amygdules green edges calc centers. grades into med. grained basalt | | | | | | | |
| Flow L | | | | | | | | |
| 350 - 605 | Red Felsite sill 255' thick | | | | | | | |

N.M.P. TORONTO-STOCK FORM NO. 501 REV. 12/51

DRILLED BY

Canadian Sonnyca Ltd

SIGNED

H. J. Brown

DIAMOND DRILL RECORD

PROPERTY Advance Michipicoten HOLE NO. 8 CONTINUED

SHEET NUMBER 3 SECTION FROM 605 TO 884 STARTED _____

LATITUDE _____ DATUM _____ COMPLETED _____

DEPARTURE _____ BEARING _____ ULTIMATE DEPTH _____

ELEVATION _____ DIP _____ PROPOSED DEPTH _____

| DEPTH FEET | FORMATION | SAMPLE NO. | WIDTH OF SAMPLE | GOLD g | SLUDGE GOLD g | Copper % |
|---|---|------------|-----------------|---------|---------------|----------|
| 605-679 | Possible flow contact at 607. Some chlorite amygdules up to 615 followed by coarse basalt. Native copper spot @ 641, 644. Dark calcite at 646. Coarse gabbroid basalt at 640 looks like 12, 19 or 20 Flows in #7 hole | 098 | 5.0 | 830-835 | | 0.20 |
| Flow M MAY be Flow 19 or 20 hole 7 | | 099 | 5.0 | 835-840 | | 0.53 |
| | | 101 | 5.0 | 840-845 | | 0.04 |
| | | 107 | 0.1 | at 710 | | 0.67 |
| 679-723 | Felsite, spot Copper at 718. DIKE 44' | | | | | |
| 723-732 | Coarse Gabbroid Basalt - mottled as in #1 Hole at 650-675 and similar to Flows 19 & 20 in #7 Hole | | | | | |
| Flow N MULTI Hole 7 20 | | | | | | |
| 732-846 | Felsite Calc Breccia at 814 to 842 broken ground at each end. Specks Copper at 830, 834, 838 to 841 | | | | | |
| 846-871 | Amygd. Basalt 8 feet grades into med. grained basalt. 1" Calc at 868 11 to core. | | | | | |
| Flow O | | | | | | |
| 871-884 | Amygd. basalt 4 feet Brownish from alteration. Grades into med. grained basalt | | | | | |
| Flow P | | | | | | |

N.M.P. TORONTO-STOCK FORM NO. 801 REV. 12/51

DRILLED BY Canadian Druggers Ltd

SIGNED MS Robinson

DIAMOND DRILL RECORD

PROPERTY Advance Michipicoten HOLE NO. 8 continued

SHEET NUMBER 4 SECTION FROM 884 TO 1128 STARTED _____
 LATITUDE _____ DATUM _____ COMPLETED _____
 DEPARTURE _____ BEARING _____ ULTIMATE DEPTH _____
 ELEVATION _____ DIP _____ PROPOSED DEPTH _____

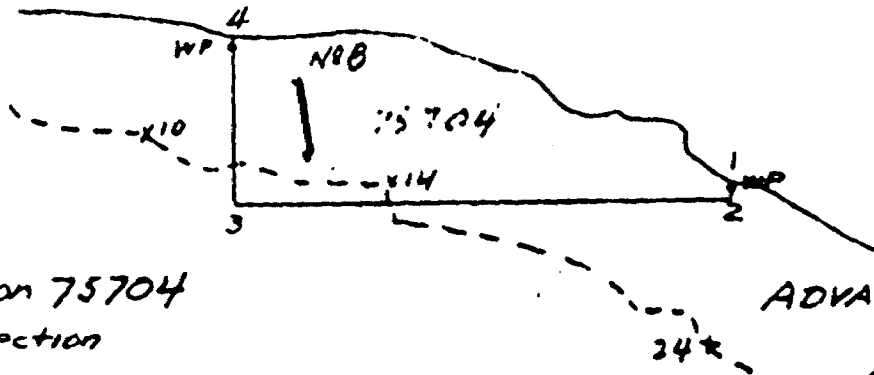
| DEPTH FEET | FORMATION | SAMPLE NO. | WIDTH OF SAMPLE | GOLD \$ | SLUDGE GOLD \$ | Copper % |
|------------|--|------------|-----------------|-----------|----------------|----------|
| 884-936 | Dark Brown altered Amygd. basalt | 108 | 1.0 | 925-926 | | 02 |
| | grades into med. grained brownish | 109 | 3.0 | 1122-1125 | | Trace |
| Flow Q | basalt with some pyrite or pyrrhotite 6" calcite at 920, small calc-analcite stringer at 920. Specks copper at 926 | | | | | |
| 936-985 | Amygd. Basalt 15 ft. Some prehnite | | | | | |
| Flow R | amygdules grades into med grained basalt with a few knife edge analcrite veinlets | | | | | |
| 985-1000 | Amygd. Basalt 5 ft. Brownish alteration | | | | | |
| Flow S | as above. Calc veinlets at 992, 994 Speck Copper at 993 | | | | | |
| 1000-1128 | Amygd. Basalt 30 feet, Chlorite amygd. | | | | | |
| Flow T | grades into med. grained basalt with Chlorite amygdules. Irregular calc veinlets at 1027, 1029 1/2 to core. Small Speck Copper at 1039, 1044. Calc-analcite 1/2 to core 1062-1066. Analcite 1076, 1079 Med grained basalt from 1040 well mineralized with pyrite-pyrrhotite in fine specks. Considerable alteration | | | | | |

N.M.P. TORONTO-STOCK FORM NO. 501 REV. 12/51

DRILLED BY Canadian Ingeyear Ltd

SIGNED H. Robinson

LAKE SUPERIOR



1322 ft on 75704
See Section

ADVANCE RED LATHING

HOLE NO. 8
N 10 W 1322 ft
1 inch = 500 feet

1" = 500 FT

LAKE SUPERIOR

HOLES Nos 7 & 8





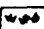
| | |
|---------------|--------------|
| Bearing No. 7 | N 10W |
| No. 8 | N 10W |
| Dip No. 7 | Dip No. 8 |
| 50° at 0' | 80° at 0' |
| 55° at 1000' | 78° at 500' |
| 56° at 1500' | 79° at 1322' |
| Depth- 1505' | 1322' |

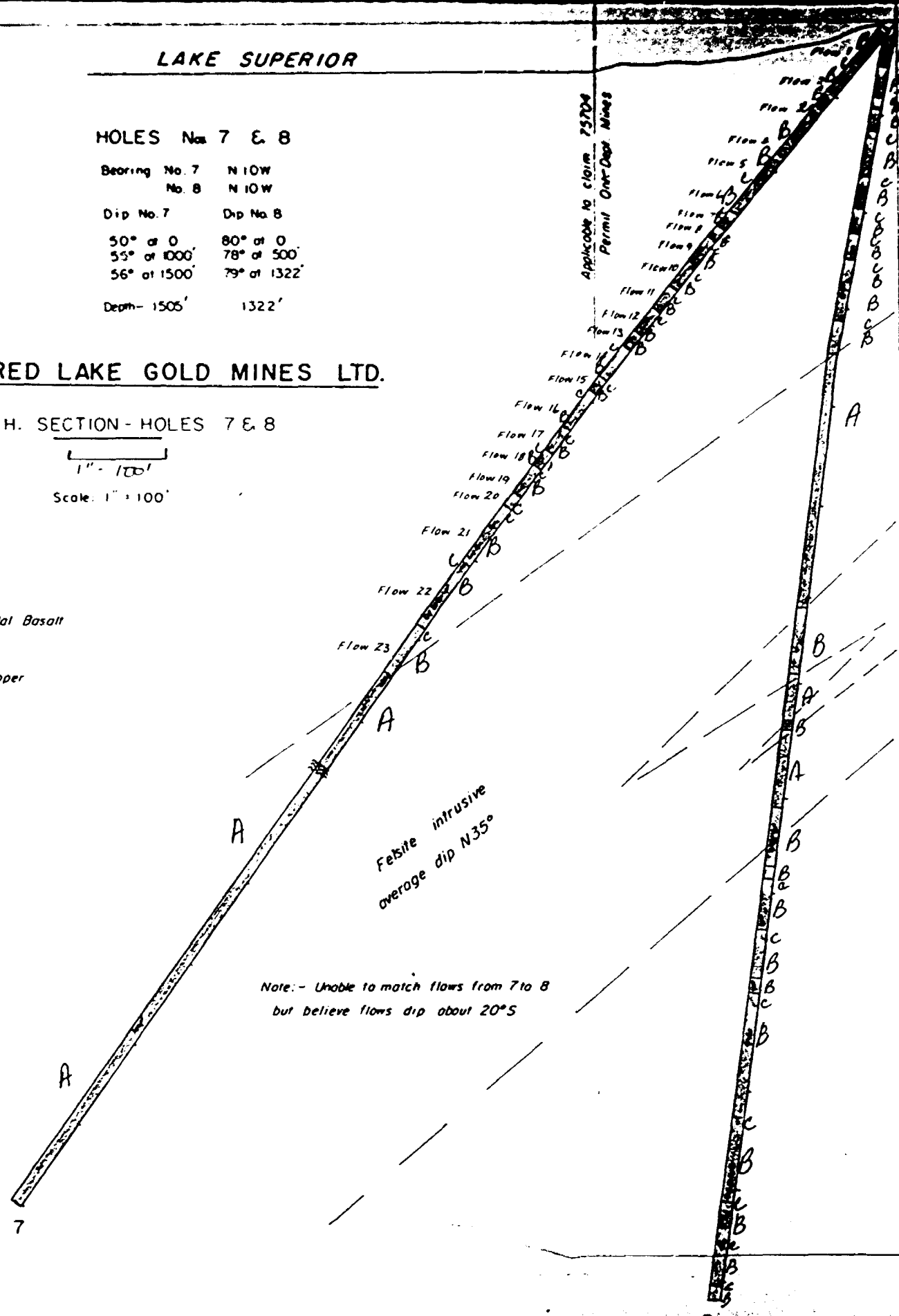
ADVANCE RED LAKE GOLD MINES LTD.

D.D.H. SECTION - HOLES 7 & 8

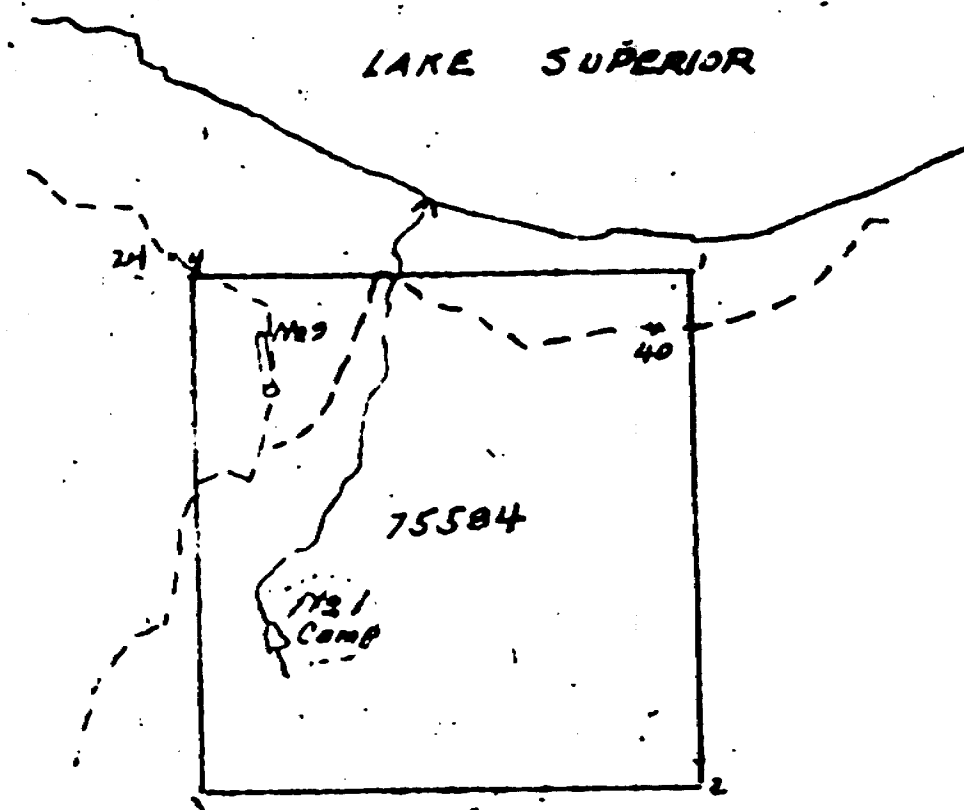
1" = 100'
Scale: 1" = 100'

LEGEND

- A  Felsite
- B  Basalt
- C  Amygdaloidal Basalt
-  Fault
-  Native Copper



Note: - Unable to match flows from 7 to 8
but believe flows dip about 20°S



371 ft on 75584
see section

ADVANCE RED LAKE GM
HOLE N29
N10W 371 FT
Pinch's 500 feet

N10W 371 FT

1" = 500 FT
└──────────┘

LAKE
SUPERIOR

Old Shaft

75584

Casing

HOLE No. 9

Bearing N 10W

Dip 65° of 0

Depth 371'

Stopped contract
completed.

Ground core
No fault

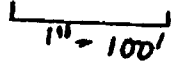
LEGEND

A  Basaltic Tuff

See log for description of Basalt

ADVANCE RED LAKE GOLD MINES LTD.

D.D.H. SECTION - HOLE 9


1" = 100'
Scale: 1" = 100'

C O R E S P E C I M E N S

Core specimens from this hole are available for examination at the resident geologist's office, Ontario Department of Mines and Northern Affairs, Sault Ste. Marie.

Company *ADVANCE RED LAKES GOLD MINES LTD.*

Hole no.*7*.....

Footage sampled *690'-873'*.....

Rack no.*E-2-1 TO E-2-2*.....

File no.*SSM 955*.....

C O R E S P E C I M E N S

Core specimens from this hole are available for examination at the resident geologist's office, Ontario Department of Mines and Northern Affairs, Sault Ste. Marie.

Company *ADVANCE RED LAKES GOLD MINES LTD.*

Hole no.*8*.....

Footage sampled *10'-1200'*.....

Rack no.*E-2-1 TO E-2-2*.....

File no.*SSM 955*.....

**SUMMARY - DIAMOND DRILLING
CANADIAN LONGYEAR - NORTH BAY**

| <u>NUMBER</u> | <u>DESCRIPTION</u> | <u>NOTES</u> |
|---------------|--|-----------------------------------|
| 1 | Collar on Claim 75700 ✓ Bearing - N 10W Mag. Dip @ 0 - 55° 20 58° 140 60° 400 62° 1341 65° Length on 75700 - 250' Recorded on 75700 500 Days Total Depth 1341' | Recorded June, 1966 |
| 2 | Collar on Claim 75700 ✓ Bearing - N 10W Mag. Dip @ 0 - 55° Length on 75700 - 139' — <i>Depth on log 280'</i> Recorded on 75700 278 Days Total Depth 139' | Recorded June, 1966 |
| 3 | Collar on Claim 75716 ✓ 75616 Bearing - N 10W Mag. Dip @ 0 - 45° 385 59° 1500 59° Length on 75716 60' Recorded on 75716 60 Days Total Depth 1506' | To be recorded 60 Days |
| 4 | Collar on Claim 75622 ✓ Bearing - N 10W Mag. Dip @ 0 - 45° 750 53° 1400 52° Length on 75622 133' 140' Recorded on 75622 133 Days 140' Total Depth 1505' | To be recorded 133 Days 140 |
| 5 | Collar on Claim 75711 ✓ Bearing - N 10W Mag. Dip @ 0 - 45° 375 57° Length on 75711 30' Recorded on 75711 30 Days Total Depth 408' | To be recorded 30 Days |

RECORDED

NOT TO BE REMOVED FROM
THE OFFICE OF THE RESIDENT
GEOLOGIST, CNT. DEPT. OF MINES
SAULT STE. MARIE, ONT.

RECEIVED

MAR 17

RESIDENT GEOLOGIST
SAULT STE. MARIE

1572

SUMMARY - DIAMOND DRILLING
CANADIAN LONGYEAR - NORTH BAY

| <u>NUMBER</u> | <u>DESCRIPTION</u> | <u>NOTES</u> |
|---------------|---|-----------------------------|
| 6A | Collared on Claim 75708 Bearing - N 10W Mag. Dip @ 0 - 40° 215 43° Length on 75708 90' Recorded on 75708 90 Days Total Depth 468' | To be recorded 90 Days |
| 6B | Collared on Claim 75708 Bearing - N 10W Mag. Dip @ 0 - 40° 45 43° 1500 53° Length on 75708 - 113' Recorded on 75708 113 Days Total Depth 1385' | To be recorded 113 Days |
| 7 | Collared on Claim 75704 ✓ Bearing - N 10W Mag. Dip @ 0 - 50° 1000 55° 1500 56° Length on 75704 495' Recorded on 75704 495 Days Total Depth 1505' | To be recorded 495 Days |
| 8 | Collared on Claim 75704 ✓ Bearing - N 10W Mag. Dip @ 0 - 80° 1000 78° 1322 79° Length on 75704 1322' Recorded on 75704 1322 Days Total Depth 1322' | To be recorded 1322 Days |
| 9 | Collared on Claim 75584 ✓ Bearing - N 10W Mag. Dip @ 0 - 65° Length on 75584 - 371' Recorded on 75584 371 Days Total Depth 371' | To be recorded 371 Days |

175R

SUMMARY OF DRILLING

| <u>HOLE</u> | <u>DEPTH</u> | <u>NEAREST CORNER</u> | <u>N. OR S.</u> | <u>E. OR W.</u> | <u>TO BE RECORDED</u> |
|-------------|--------------|-----------------------|-----------------|-----------------|-----------------------|
| 1 | 1341 | 1 - 75700 | - | - | Recorded June, 1966 |
| 2 | 139 | 1 75700 | - | - | Recorded June, 1966 |
| 3 | 1506 | WP-4 75616 | N100 | E135 | 60 Days |
| 4 | 1505 | WP-4 75622 | N100 | E275 | 133 Days |
| 5 | 408 | WP-1 75712 | N690 | E250 | 30 Days |
| 6A | 468 | WP-1 75707 | S75 | E90 | 90 Days |
| 6B | 1385 | WP-1 75707 | S62 | E85 | 43 Days |
| 7 | 1505 | WP-1 75706 | N120 | W125 | 495 Days |
| 8 | 1322 | WP-1 75706 | N120 | W125 | 1322 Days |
| 9 | 371 | No. 4 75584 | S310 | W1210 | 371 Days |
| <hr/> | | | | | <hr/> |
| TOTAL | 9,950 | | | | 2,614 DAYS |
| <hr/> | | | | | <hr/> |

H5R

NATIVE COPPER

Native Copper was found as coarse slugs, round grains the size of shot and fine flakes in the Basalts of No. 1, 7 and 8 holes and in cracks in Felsite in No. 7 hole. It seemed to be rather uniformly distributed in an altered section of a wide coarse Gabbro flow in hole No. 1 (Flow 15) in fine flakes and similarly in Flows 21 and 22 of hole No. 7, and just below the last Felsite in hole No. 8. Some samples indicate sections of considerable interest and the possibility of locating low-grade Copper ore between hole Nos. 1 and 7. It is thought that vertical holes along the shore would be worth investigating. Some of the results are listed below:-

| <u>HOLE NO:</u> | <u>FROM</u> | <u>TO</u> | <u>WIDTH</u> | <u>% Cu. ASSAY</u> |
|-----------------|-------------|-----------|--------------|------------------------|
| 1 | 600 | 605 | 5.0 | .41 |
| | 605 | 610 | 5.0 | .12 |
| | 610 | 615 | 5.0 | .14 |
| | 615 | 620 | 5.0 | .09 |
| 7 | 691 | 694 | 3.0 | .14 |
| | 705 | 708 | 3.0 | .19 |
| | 710 | 715 | 5.0 | .25 |
| 8 | 830 | 835 | .50 | .20 |
| | 835 | 840 | 5.0 | .53 |
| | 1175 | 1180 | 5.0 | .35 |
| | 1180 | 1185 | 5.0 | .16 |

Assays were made by X-Ray Assay Laboratory, Don Mills, Ontario and in each assay that part of the Copper that would not go through a 200 mesh screen was assayed separately.

Maps (in Duplicate)

Plan 1" - 500' Sheets 1 to 6

Sections 1" - 100' Hole Nos. 3, 4, 5, 6A, 6B, 7 and 8, 9

H. S. Robinson
.....
H. S. ROBINSON,
Member C.A.C.

SUMMARY OF CORE ASSAYS

BY

L-RAY ASSAY LABORATORIES
ROSE MILLS, ONTARIO

| <u>PILE NO.</u> | <u>ASSAY NO.</u> | <u>FROM</u> | <u>DEPTH TO</u> | <u>LENGTH FEET</u> | <u>COPPER %</u> |
|-----------------|------------------|-------------|-----------------|--------------------|-----------------|
| 4 | 081 | 130 | 135 | 5.0 | 0.01 |
| | 082 | 285 | 290 | 5.0 | 0.02 |
| | 083 | 300 | 304 | 3.5 | trace |
| | 084 | 605 | 610 | 5.0 | 0.01 |
| | 085 | 800 | 805 | 5.0 | 0.01 |
| | 086 | 938 | 943 | 5.0 | 0.02 |
| | 087 | 1024 | 1025 | 0.50 | 0.02 |
| | 088 | 1465 | 1470 | 5.0 | 0.02 |
| | 089 | 1470 | 1475 | 5.0 | 0.02 |
| | 090 | 1475 | 1480 | 5.0 | 0.02 |
| | 091 | 1495 | 1500 | 5.0 | 0.01 |
| 7 | 094 | 691 | 694 | 3.0 | 0.14 |
| | 095 | 705 | 708 | 3.0 | 0.19 |
| | 096 | 775 | 777 | 2.5 | 0.37 |
| | 106 | 677 | 680 | 3.0 | 0.11 |
| | 105 | 710 | 715 | 5.0 | 0.25 |
| | 104 | 845 | 850 | 5.0 | 0.06 |
| | 103 | 850 | 855 | 5.0 | 0.04 |
| | 102 | 1275 | 1280 | 5.0 | 0.04 |
| 8 | 098 | 830 | 835 | 5.0 | 0.20 |
| | 099 | 835 | 840 | 5.0 | 0.53 |
| | 101 | 840 | 845 | 5.0 | 0.04 |
| | 107 | at 710 | | 0.1 | 0.67 |
| | 108 | 925 | 926 | 1.0 | 0.02 |
| | 109 | 1122 | 1125 | 3.0 | trace |
| | 110 | 1175 | 1180 | 5.0 | 0.35 |
| | 111 | 1180 | 1185 | 5.0 | 0.16 |

ORIGINAL ASSAY REPORTS ATTACHED

HR

Certificate of Analysis

NO. 7483

TO. Advance Red Lake Mines Limited,
347 Bay Street Suite 700,
TORONTO, Ontario.

RECEIVED September 9, 1966

INVOICE NO. 13

SAMPLE(S) OF split core &
whole core

SUBMITTED TO US SHOW RESULTS AS FOLLOWS.

| <u>Sample No.</u> | <u>% Cu</u> |
|-------------------|-------------|
| 102 | 0.04 |
| 103 | 0.04 |
| 104 | 0.06 |
| 105 | 0.25 % |
| 106 | 0.11 % |
| 107 | 0.67 |
| 108 | 0.02 |
| 109 | Trace |
| 110 | 0.35 % |
| 111 | 0.16 % |

X-RAY ASSAY LABORATORIES LIMITED

DATE

CERTIFIED BY E. J. Bouch
MANAGER

X-RAY ASSAY LABORATORIES LIMITED

45 LESMILL ROAD - DON MILLS, ONTARIO - TELEPHONE 445-5755

Certificate of Analysis

NO. 7447

TO. Advance Red Lake Gold Mines Ltd.,
347 Bay Street,
Toronto, Ontario.

RECEIVED September 2, 1966

INVOICE NO. 9022

SAMPLE(S) OF split core
rock

SUBMITTED TO US SHOW RESULTS AS FOLLOWS.

| <u>Sample</u> | <u>% Cu</u> |
|---------------|-------------|
| 094 | 0.14 |
| 95 | 0.19 |
| 96 | 0.37 |
| 97 | Trace |
| 98 | 0.20 |
| 99 | 0.53 |
| 101 | 0.04 |

X-RAY ASSAY LABORATORIES LIMITED

MANAGER

#1 630

#2 175

#3 830

#

#4 900

#5 240

#6 280

#6B 980

#7 900

#8 185

#9 150

Projected Distances
ON Surface.

0 500 500 500 500

