

DIAMOND DRILLING



41009NE0001 22 HUFFMAN

010

TOWNSHIP: Huffman

REPORT No.: 22

WORK PERFORMED BY: Ronald R. Blusson

<u>CLAIM No.</u>	<u>HOLE No.</u>	<u>FOOTAGE</u>	<u>DATE</u>	<u>NOTE</u>
P 576383	GOG-7	208.0	Nov/82	(1) (2)
P 576376	GOG-8	197.0	Nov/82	(1) (2)
		<u>40.5'</u>		

NOTES: (1) #15-83

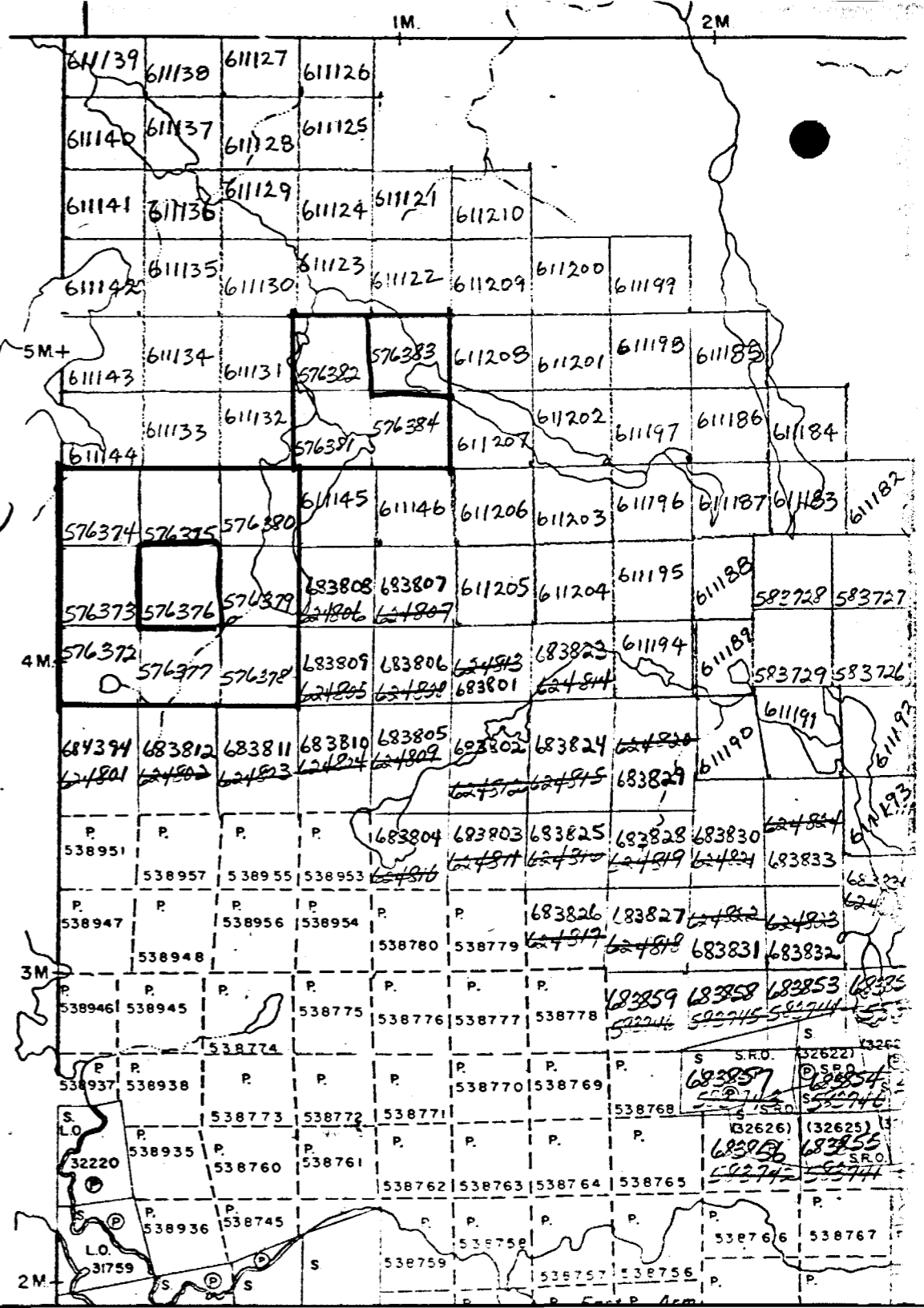
(2) O.M.E.P. Submittal: #OM82-5-C-110

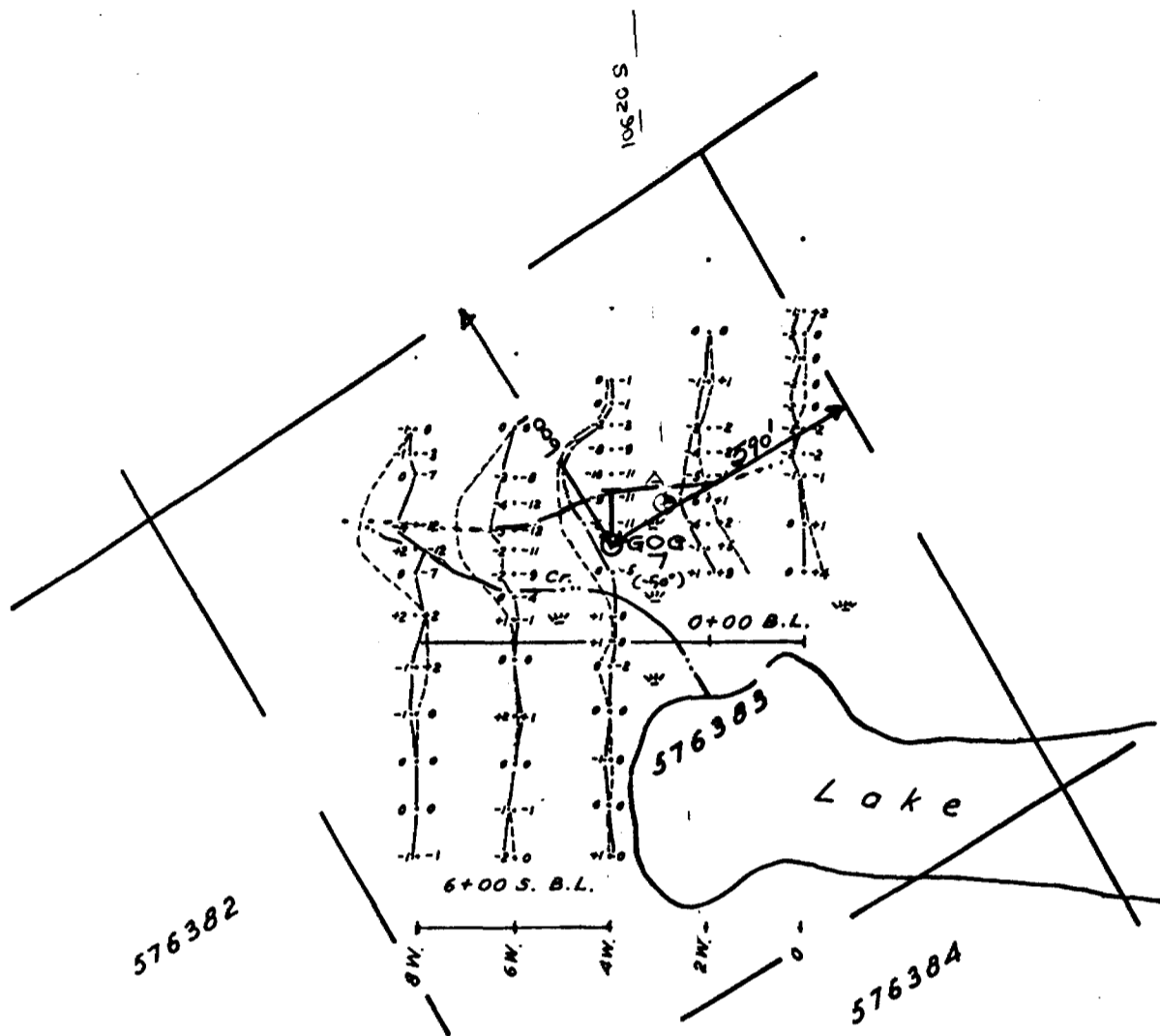
HOLEMAN LWB

Osway Twp. - M.1043

Ronald R. Blusson
#15-83

Huffman
JRP
M940



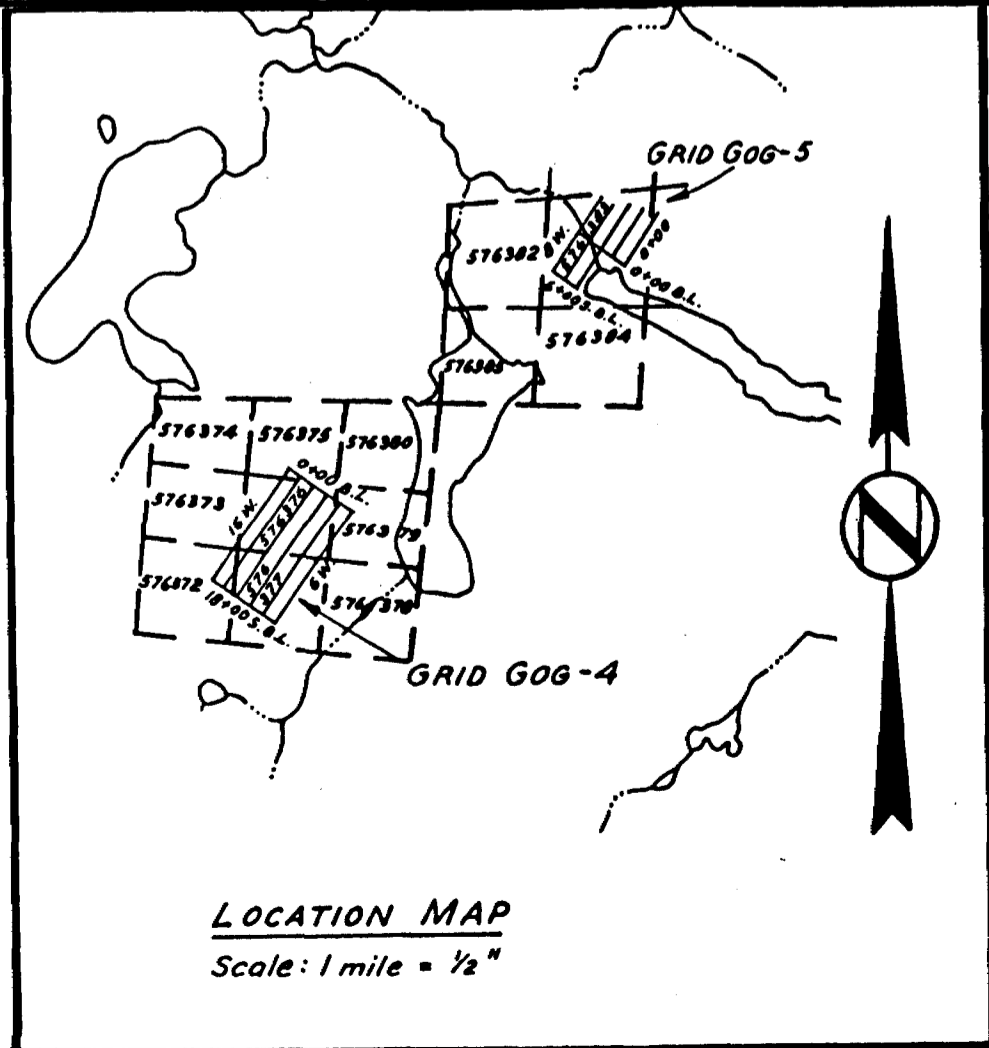


GRID GOG-5

Surveyed June 23, 1982

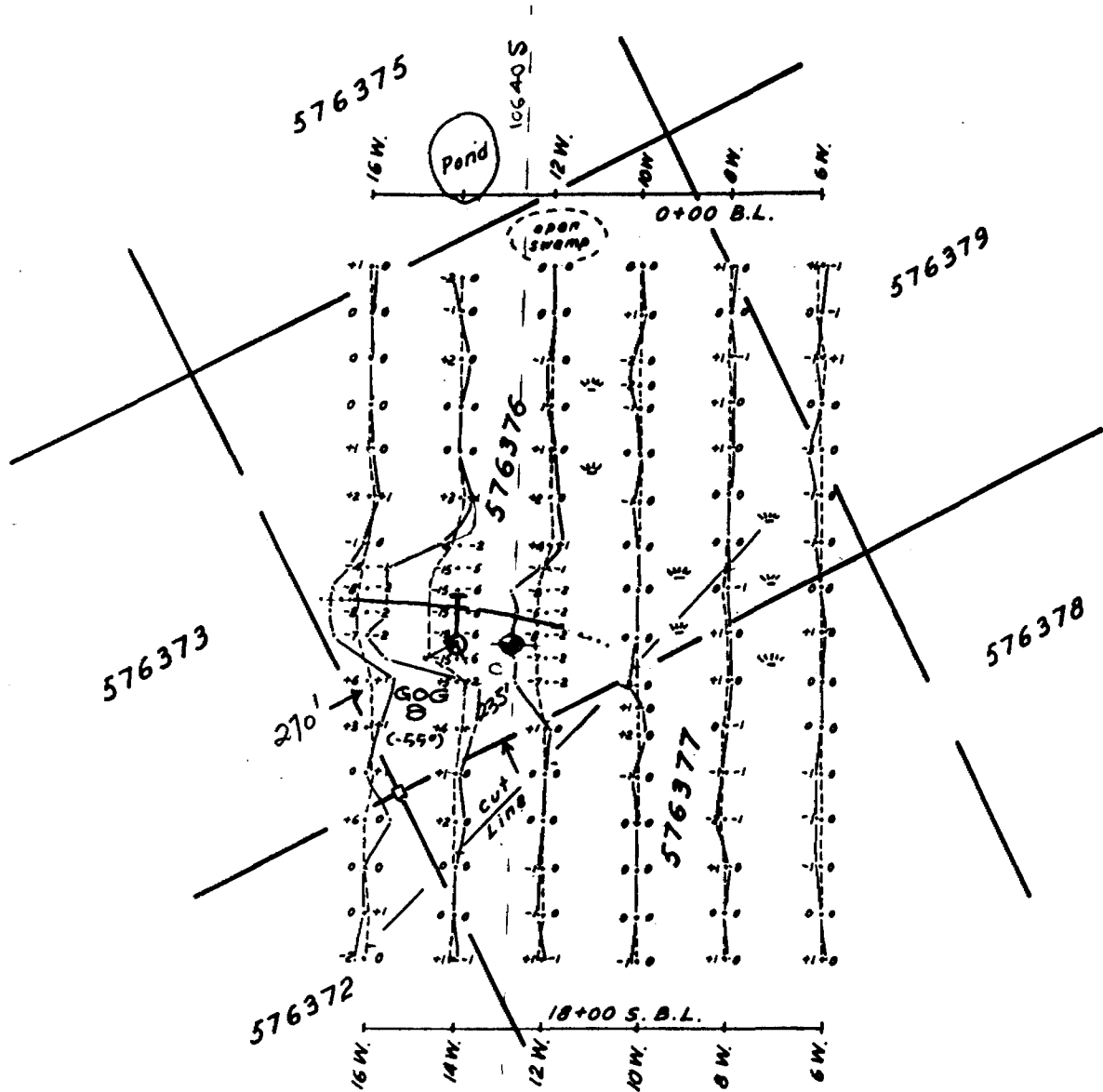
1.01 miles E.M.

Scale 1" = 400'



LOCATION MAP

Scale: 1 mile = 1/2"

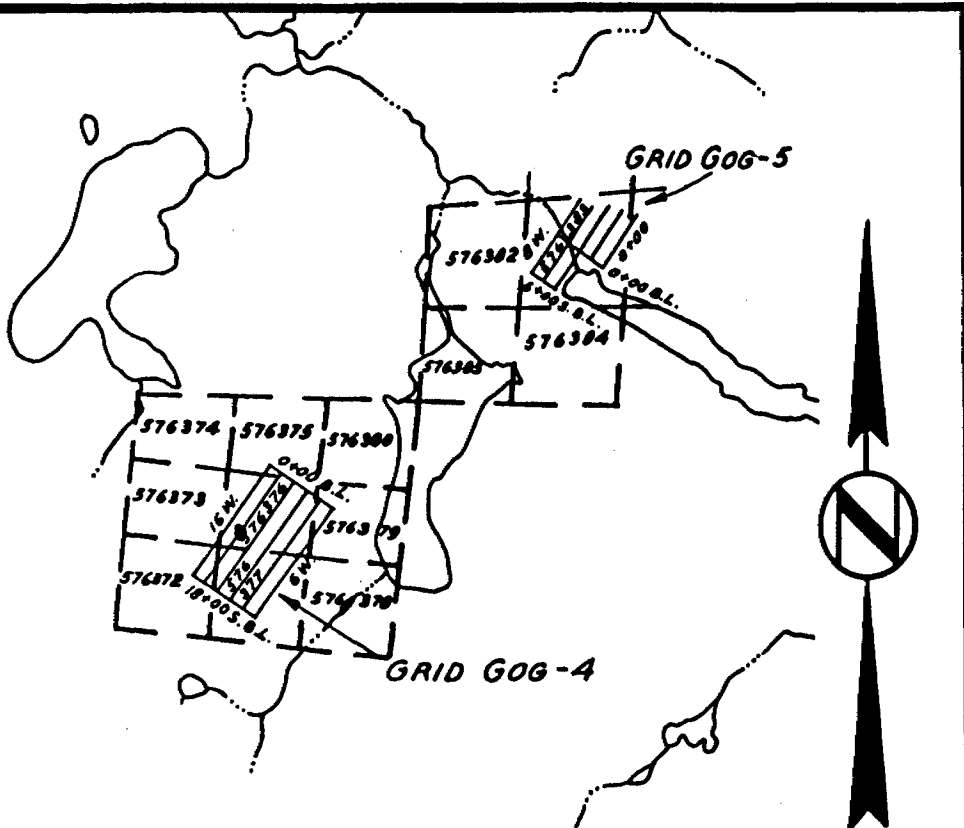


GRID GOG-4

Surveyed June 23, 1982

2.04 miles E.M.

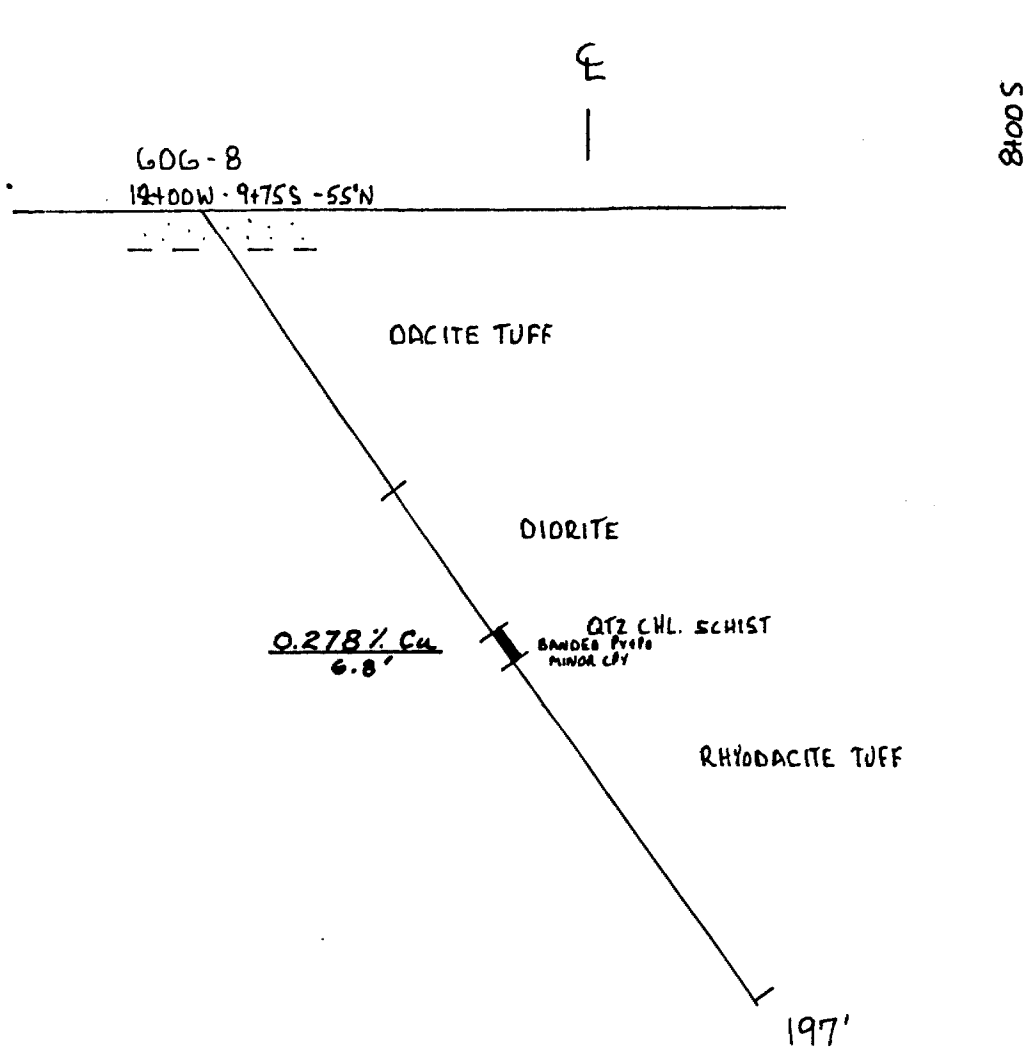
Scale 1" = 400'



LOCATION MAP

Scale: 1 mile = 1/2"

LOOKING GRID WEST



606AMA PROJECT

HOLE # 6068

14100W 9+75S -55°N

GRID 606-4 CLAIM # 576376

SCALE 1"=40'

NOV. 1982

ED FLUSKEY

