

DIAMOND DRILLING PROGRAM
ESTHER TWP.

41008W0039 0983-007 ESTHER

OBJECTIVE:

The diamond drilling conducted during the month of August 1993, on claims P-1094208 and patent claim S-31117 Esther Twp. Forcupine Mining Division, Ontario was:

1. To sample with drill holes the east - west trending gold mineralized zone within these claims.
2. To attempt to ascertain the grade, length, width and dip of this gold mineralized zone.
3. To intersect any parallel gold mineralized zones.

RESULTS:

The results of the diamond drilling was very encouraging. Three holes were drilled over a strike length of some 540 feet with significant gold values in each hole. See attached pages to diamond drill hole logs for further information and assay results on drill holes.

010

CONCLUSIONS:

The 441 feet of diamond drilling completed on claims P-1094208 and patent claim S-31117 Esther Twp. Forcupine Mining Division, Ontario indicates a steeply dipping north (75° - 80°) east - west trending gold mineralized zone with significant gold values from 16 inches up to 12 feet in width over a strike length of 540 feet.

RECOMMENDATIONS:

Further diamond drilling should be conducted to fully evaluate and test the potential of this gold mineralized zone.

1. Some holes should be drilled at -45° or steeper, angled south, to intersect the steeply dipping north (75° - 80°) east - west trending gold mineralized zone along the 540 foot length and at depth.
2. Further holes should be drilled to the west with holes angled south from the No. 3-93 drill hole set-up to intersect and sample this east - west trending gold mineralized zone still open to the west.

M. J. Burton

Hole I -93

Sample A-1-93

33'6" - 35'

Sample A-2-93

46'7" - 47'11"

HOLE 2-93

Sample B-3-93

45' - 47'

Sample B-4-93

47' - 49'

Sample B-5-93

55' - 57'

Sample B-6-93

57' - 58'

Sample B-7-93

58'5" - 60'5"

HOLE 3-93

Sample C-8-93

18' - 20'

Sample C-9-93

20' - 22'

Sample C-10-93

22' - 24'

Sample C-11-93

24' - 26'

Sample C-12-93

26'5" - 28'5"

Sample C-13-93

28'5" - 30'5"



Established 1928

Swastika Laboratories

A Division of TSL / ASSAYERS INC.

Assaying - Consulting - Representation

Assay Certificate

3W-2684-RA1

Company: **M. L. BURTON**

Project:

Attn:

Date: **OCT-21-93**

Copy 1. 352 Howey Dr. Sudbury, Ont. P3B 1E8

We hereby certify the following Assay of 13 core samples submitted OCT-19-93 by .

Sample Number	Au oz/ton	Au check oz/ton
A-1-93	0.006	
A-2-93	0.264	0.268
B-3-93	0.034	
B-4-93	0.208	
B-5-93	0.047	
B-6-93	0.053	
B-7-93	0.134	0.132
C-8-93	0.144	
C-9-93	0.060	
C-10-93	0.206	
C-11-93	0.051	
C-12-93	0.083	
C-13-93	0.130	0.118

Certified by

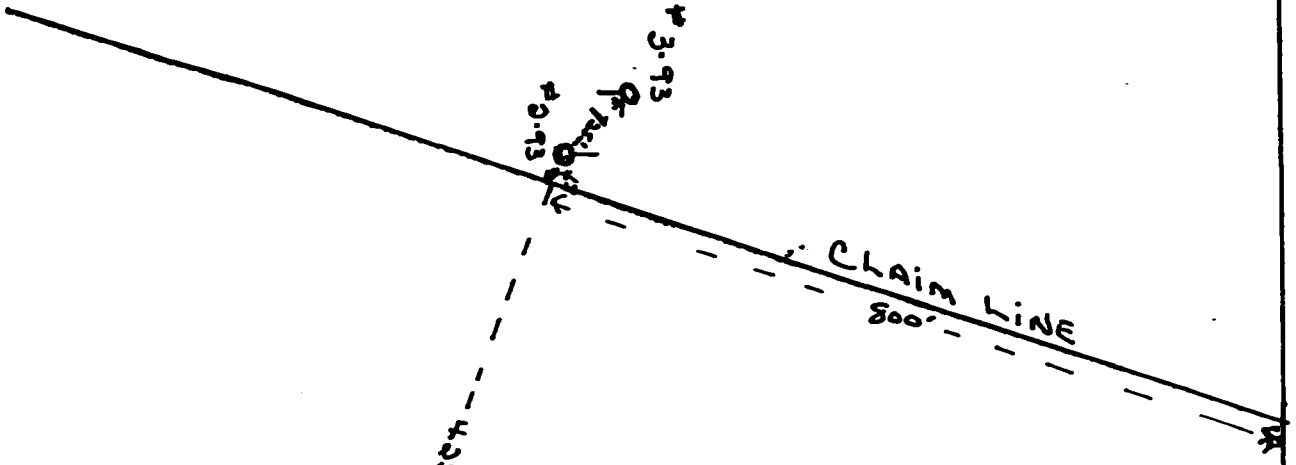
P.O. Box 10, Swastika, Ontario P0K 1T0
Telephone (705) 642-3244 FAX (705) 642-3300



Scale: 1" = 200 FT.

(P)

S-31117



P. 1094208

Location of Drill Holes
 1-93, 2-93, 3-93
 Claim P-1094208
 Patent Claim S-31117
 to other users.

Hole #I-93

LOCATION: On mining claim F-1094208 Esther Twp. Porcupine Mining Division, Ontario.
300 feet south 18° west, 425 feet east 21° south, of No. 4 post of mining claim F-1094208 Esther Twp.

Depth of Hole: 162 feet.
Angle of Hole: -40° degrees.
Dia. of Core: 7/8" (NRF).
Direction of Hole: North.
Date Hole Started: August 5/93.
Date Hole Completed: August 13/93.

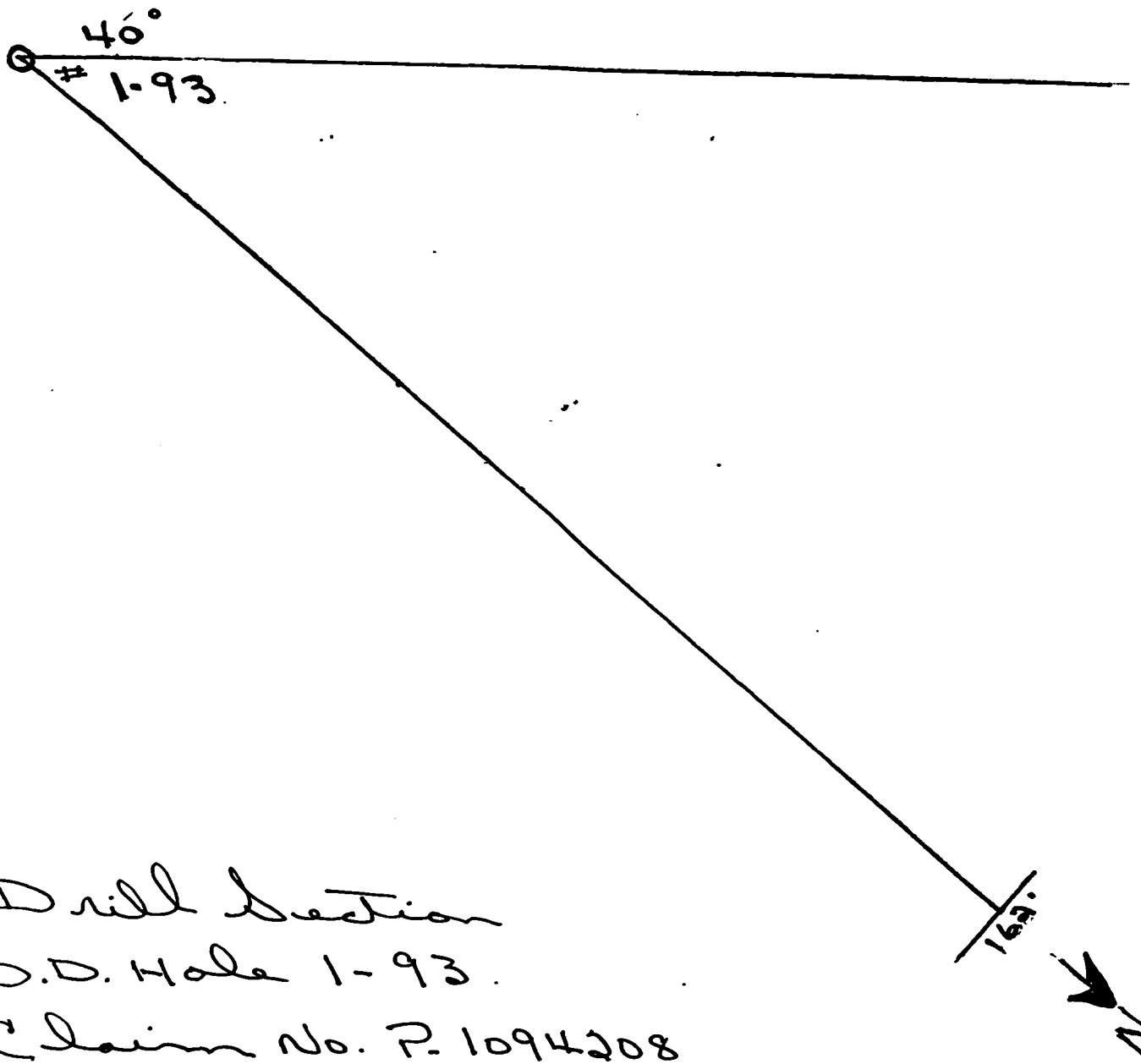
OBJECTIVE:

To intersect the east - west trending gold mineralized zone, for width, grade and dip, and any parallel gold mineralized zones.

RESULTS:

Two mineralized sections intersected in the gold mineralized zone was from 33'6" to 35' assaying 0.006 AU. across 18".
The other section from 46'7" to 47'11" assayed 0.264 AU. across 16".
No other parallel zones were intersected.
The dip of the gold mineralized sections intersected in the gold mineralized zone were steeply dipping north.

Scale: 1" = 20 Ft.



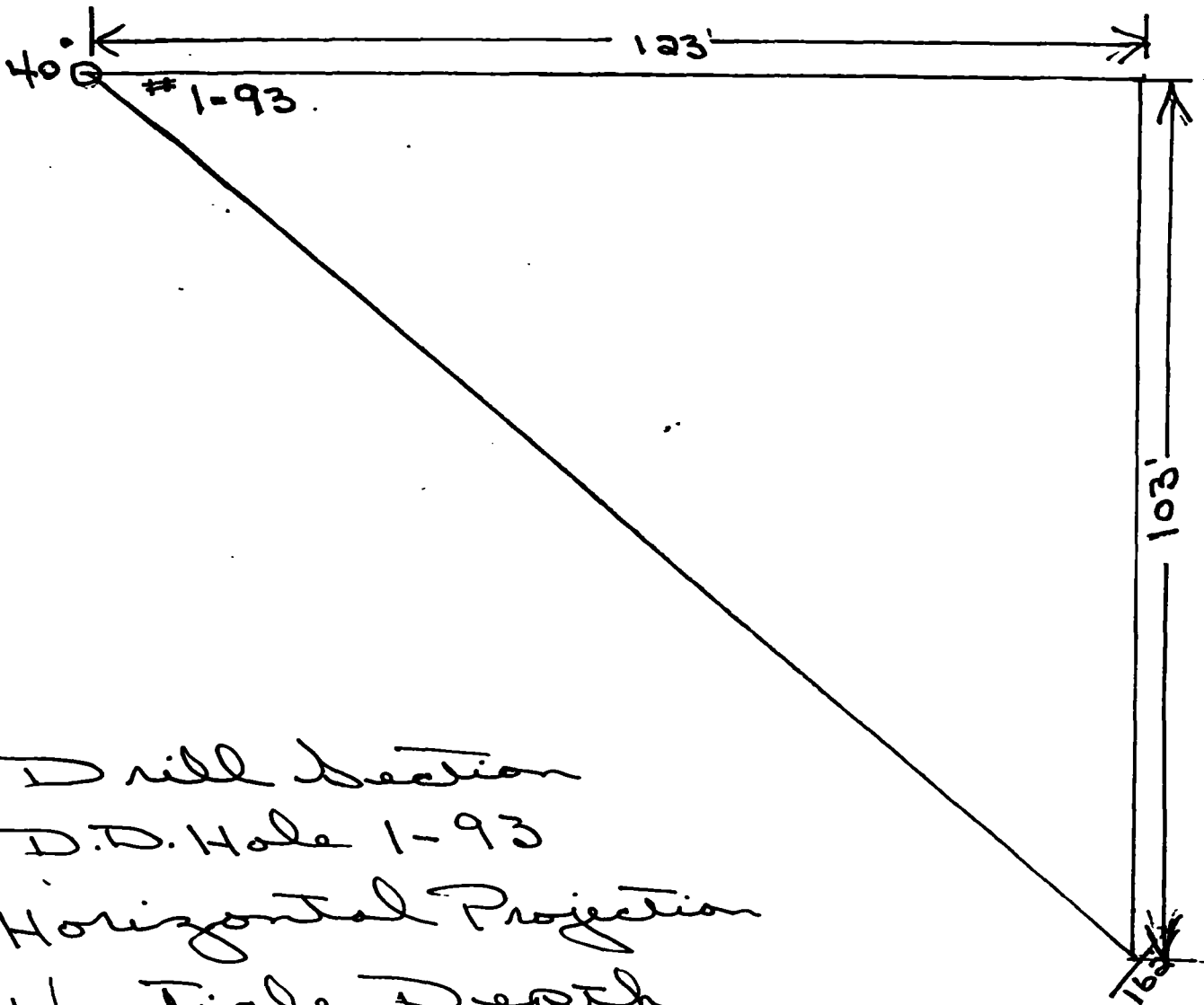
Drill Section

D.D. Hole 1-93.

Claim No. P. 1094208

Esther Twp.

Scale: 1" = 20 FT.



Drill Section
D.D. Hole 1-93
Horizontal Projection
Vertical Depth
Claim No. P-1094208
E. other Temp.



Ministry of
Northern Development
and Mines

Ministère du
Développement du Nord
et des Mines

Diamond Drilling Log

Journal de forage au diamant

Fill in on every page
Remplir ces cases à
chaque page

Hold No.
Forage n°
I-93
Page No.
Page n°
I

Drilling Company Compagnie de forage M. L. Burton		Color Elevation Élévation du collier	Logging of hole from top North-south par rapport au nord-sud North 162'	Total Footage Avancement total du forage 162'	Dip of Hole at Inclinaison du forage au collier 40°	Map Reference No. N° de référence sur la carte N.T.S. 410/9	Claim No. N° de concession minière P-1094208
Date Hole Started Date de commencement du forage August 5, 1993	Date Completed Date d'achèvement August 13, 1993	Logged by Inscrit par M.L. Burton		Address/Location where core stored Adresse/endroit où le carottage est stocké Core is stored at camp on patent claim S-31116 Esther Twp.		Location (Twp, Lot, Con. or Lat. and Long.) Emplacement (canton, lot, concession, ou latitude et longitude) Esther Twp. 47° 40' N. Latitude 82° 25' W. Longitude	
Exploration Co., Owner or Operator Compagnie d'exploration, propriétaire ou titulaire d'option Martin L. Burton		Date Logged Date d'inscription au journal Sept. 22/93		Submitted by (signature) Déposé par (signature) M.L. Burton		Property Name Nom de la propriété Burton Property	

Footage/Avancement From/De	Rock Type Type de roche	Description (Colour, grain size, texture, minerals, alteration, etc.) Description (Couleur, granulométrie, texture, minéraux, transformation, etc.)	Core Length Longueur de foration	Assays †/Analyses minéralurgiques
0	21	Uccing		
2'	25'	Meta volcanics Intermediate to mafic in composition, green to dark green in colour, no mineralization.		
25'	23'6"	Meta volcanics Intermediate to mafic in composition, dark green to green in colour, no mineralization.		
33'6"	25'	Meta volcanics Sheared, mineralized pyrite, calcopyrite.		
35'	46'7"	Meta volcanics Sheared meta volcanics, dark green in colour.		A-1-933336" 35' 18" 0.006 AU.
46'7"	47'11"	quartz carbonate and arsenopyrite.		A-2-934617" 47'11" 16" 0.264 AU.
47'11"	50'	Meta volcanics Sheared meta volcanics, dark green.		
50'	75'	Meta volcanics Some quartz inclusions, some shearing, minor specks of pyrite mineralization.		
75'	100'	Meta volcanics Green to light green, chloritic fragments, no mineralization.		
100'	125'	Meta volcanics Darker green in colour, fine grained, some shearing.		
125'	162'	Meta volcanics Dark green in colour, some quartz stringers, sheared, minor specks of pyrite and pyrrhotite sulphides.		
		End of Hole		

604 (2081) *For features such as foliation, bedding, schistosity, measured from the long axis of the core.
*Exemples de caractéristiques : foliation, schistosité, stratification. L'angle est mesuré par rapport à l'axe longitudinal de la carotte.

† Additional credit available. See Assessment Work Regulation.
† Des crédits supplémentaires sont offerts. Consulter les règlements relatifs aux travaux d'évaluation.
Nota : Dans cette formule, lorsqu'il désigne des personnes, le masculin est utilisé au sens neutre.

Hole #2-93

LOCATION: On patent claim No. S-31117 Esther Twp. Porcupine Mining Division, Ontario.
800 feet south 18° west, 43 feet west of No. 4 post of mining claim P-1094208 Esther Twp.

Depth of Hole: 153 feet.
Angle of Hole: -45° degrees.
Dia. of Core: $7/8$ " (XRP).
Direction of Hole: North.
Date Hole Started: August 14/93.
Date Hole Completed: August 21/93.

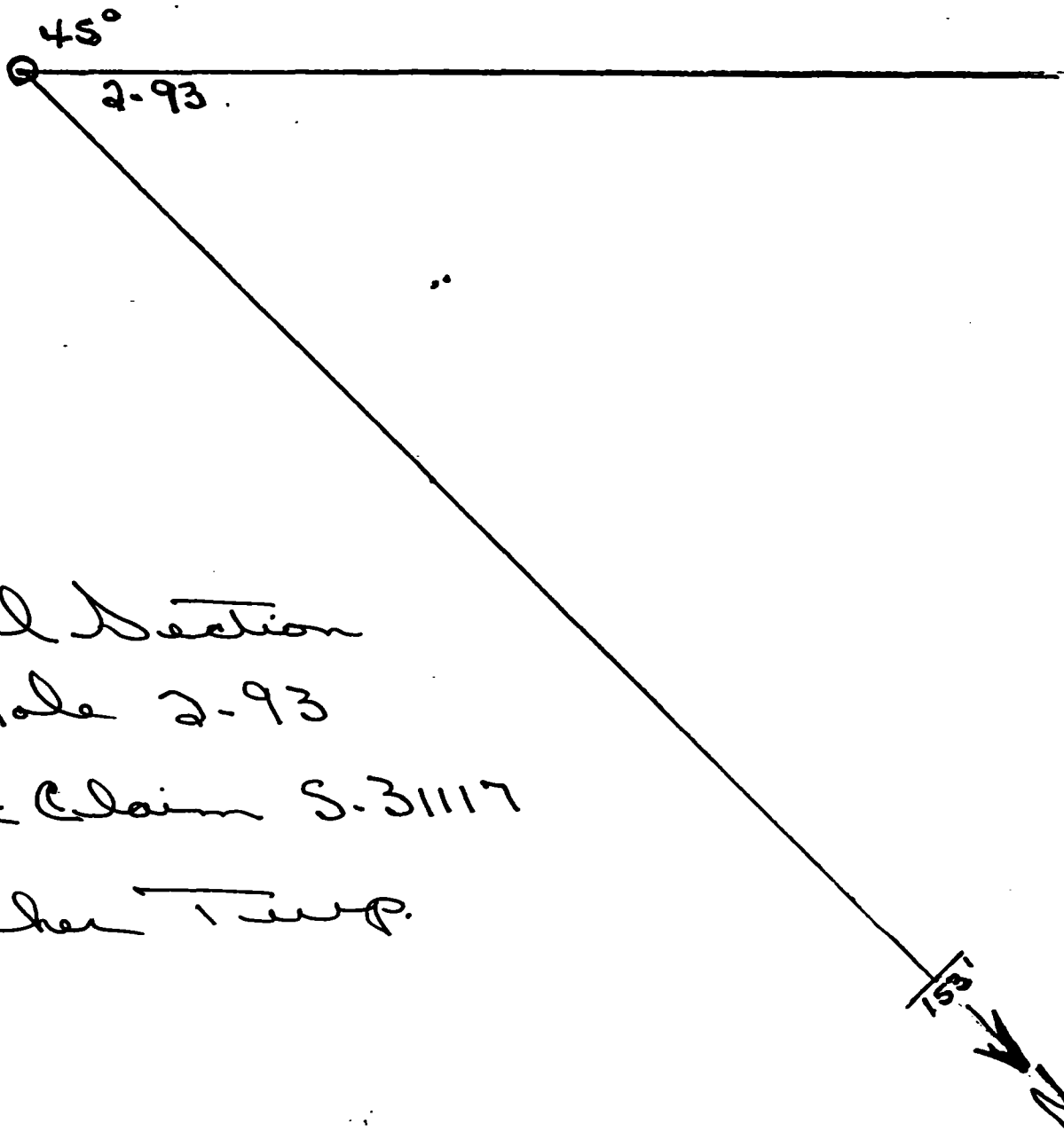
OBJECTIVE:

To intersect the east - west trending gold mineralized zone along the strike for width, grade and dip and any parallel gold mineralized zones.

RESULTS:

Five mineralized sections intersected in the gold mineralized zone was from 45' to 60'5". Sections assayed were 45' to 47' assaying 0.034 AU. across 24", 47' to 49' assaying 0.208 AU. across 24", 55' to 57' assaying 0.047 AU. across 24", 57' to 58' assaying 0.053 AU. across 12", 58' to 60'5" assaying 0.134 AU. across 29". No other parallel gold mineralized zones were intersected. The gold mineralized sections intersected were dipping steeply north.

Scale: 1" = 20 FT.



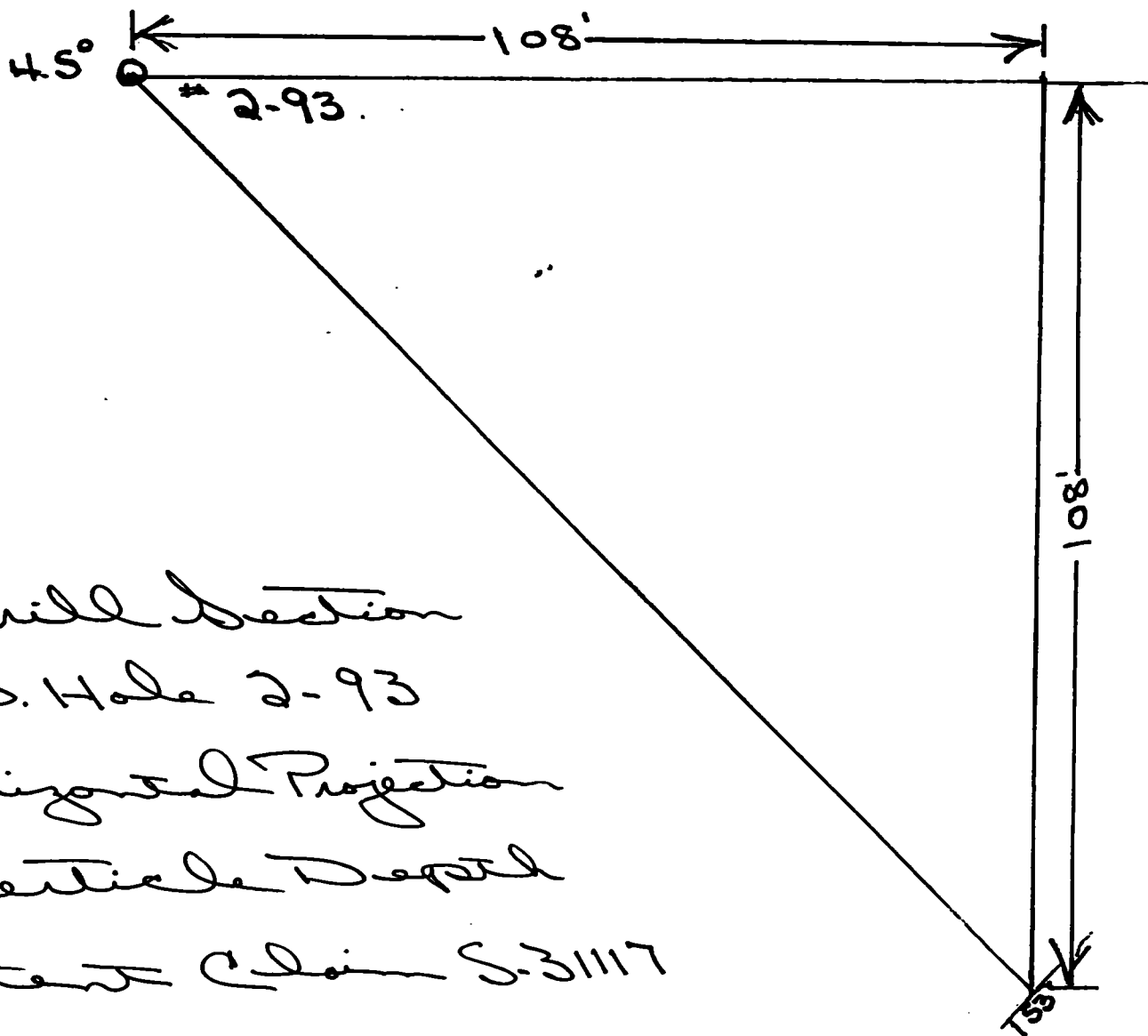
Drill Section

D.D. Hole 2-93

Patent Claim S. 31117

Esther Temp.

Scale: 1" = 20 FT.



Drill Section
D.D. Hole 2-93
Horizontal Projection
Vertical Depth
Patent Claim S-31117
Esther Temp.



Drilling Company / Compagnie de forage: M. L. Burton

Date Hole Started / Date de commencement du forage: August 14, 1993

Date Completed / Date d'achèvement: August 21, 1993

Exploration Co., Owner or Optionee / Compagnie d'exploration, propriétaire ou titulaire d'option: M. L. Burton

Map Reference No. / N° de référence sur la carte: N.T.S. 410/9

Claim No. / N° de concession minière: S-31117

Location (Twp, Lot, Con. or Lat. and Long.) / Emplacement (comté, lot, concession, ou latitude et longitude): 47° 40' N. Latitude, 82° 25' W Longitude

Property Name / Nom de la propriété: Burton Property

Address/Location where core stored / Adresse/endroit où la carotte est stockée: Core is stored at camp on patent claim S-31116 Esther Twp.

Footage/Avancement From/De	To/A	Rock Type / Type de roche	Description (Colour, grain size, texture, minerals, alteration, etc.) / Description (Couleur, granulométrie, texture, minéraux, transformation, etc.)	Core Number / Numéro de carottes	Year Sample No. / N° d'échantillon de prospecteur	Sample Pertinence / Importance de l'échantillon (en pourcentage)	Sample Length / Longueur de l'échantillon	Assays / Analyses minéralurgiques
0'	1'2"	Casing	Meta volcanics					
1'2"	25'	Meta volcanics	Intermediate to mafic in composition, grey to green					
25'	45'	Meta volcanics	in colour, few specks of pyrite mineralization, Grey to green in colour, some shearing, medium to fine grained.					
45'	50'	Meta volcanics	Quartz carbonate veing, fine to heavy mineralization pyrite and arsenopyrite.	B-3-93	45'		24"	0.034 AU.
50'	55'	Meta volcanics	Intermediate to mafic in composition, grey to green in colour, medium grained.	B-4-93	47'		24"	0.208 AU.
55'	60'5"	Meta volcanics	Quartz carbonate veing mineralized with pyrite and arsenopyrite.	B-5-93	55'		24"	0.047 AU.
60'5"	75'	Meta volcanics	Grey to green in colour, shearing, inclusions of carbonate.	B-6-93	57'		12"	0.053 AU.
75'	125'	Meta volcanics	Fine grained, some quartz bands, dark green in colour.	B-7-93	58'		29"	0.134 AU.
125'	153'	Meta volcanics	Fine grained, quartz stringers, minor specks of pyrite and pyrrhotite mineralization.					
		End of Hole.						

* For features such as foliation, bedding, schistosity, measured from the long axis of the core.
* Exemples de caractéristiques : foliation, schistosité, stratification. L'angle est mesuré par rapport à l'axe longitudinal de la carotte.

† Additional credit available. See Assessment Work Regulation.
† Des crédits supplémentaires sont offerts. Consulter les règlements relatifs aux travaux d'évaluation.
Nota : Dans cette formule, lorsqu'il désigne des personnes, le masculin est utilisé au sens neutre.

Hole #3-93

LOCATION: On patent claim No. 3-3III7 Esther Twp. Porcupine Mining Division, Ontario.
800 feet south 18° west, 125 feet west 20° north of No. 4 post of mining claim P-1094208 Esther Twp.

Depth of Hole: 126 feet.
Angle of Hole: -55° degrees.
Dia. of Core: $7/8$ " (XRP).
Direction of Hole: South.
Date Hole Started: August 21/93.
Date Hole Completed: August 27/93.

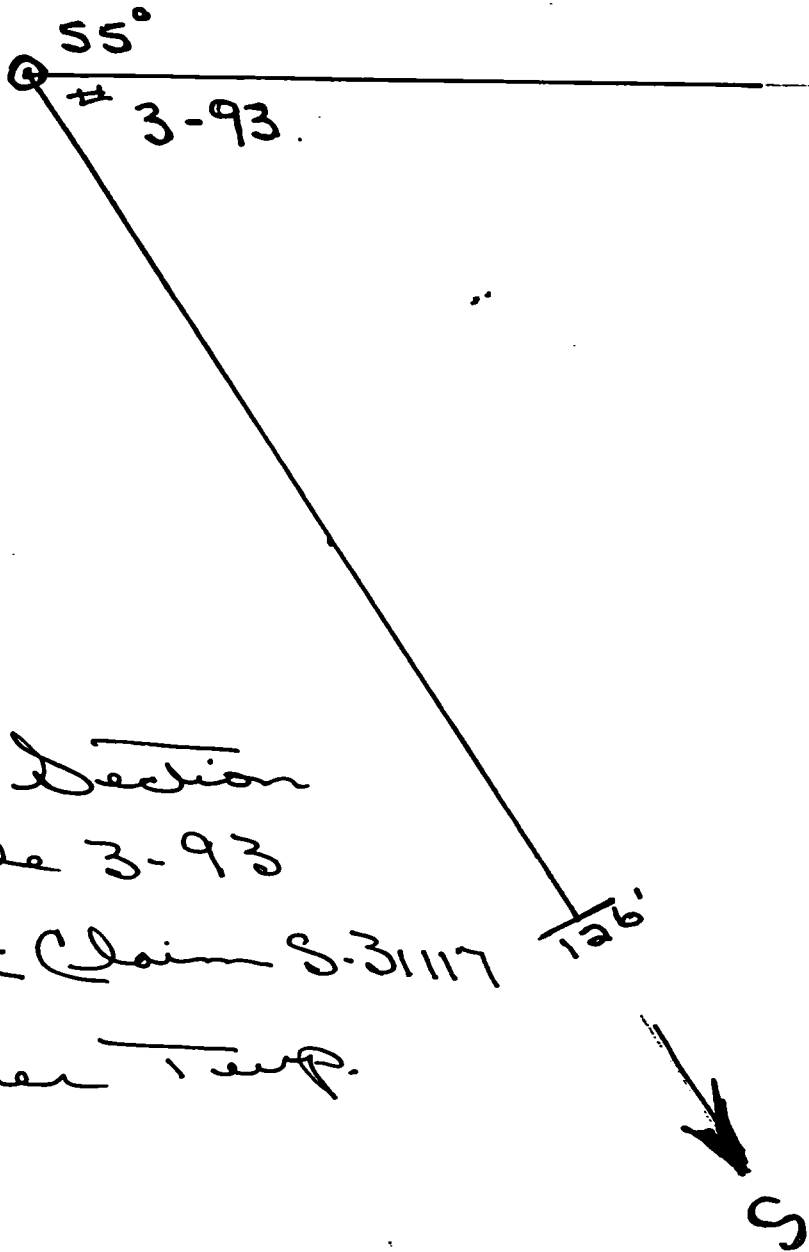
OBJECTIVE:

To intersect the east - west trending gold mineralized zone further along strike for width, grade and dip and any parallel gold mineralized zones.

RESULTS:

Six mineralized sections intersected in the gold mineralized zone was from 18' to 30'5". Sections assayed were
18' to 20' assaying 0.144 AU. across 24".
20' to 22' assaying 0.060 AU. across 24".
22' to 24' assaying 0.206 AU. across 24".
24' to 26' assaying 0.051 AU. across 24".
26'5" to 28'5" assaying 0.083 AU. across 24".
28'5" to 30'5" assaying 0.130 AU. across 24".
No other parallel gold mineralized zones were intersected.
The gold mineralized section intersected was dipping steeply north.

Scale: 1" = 20 FT.



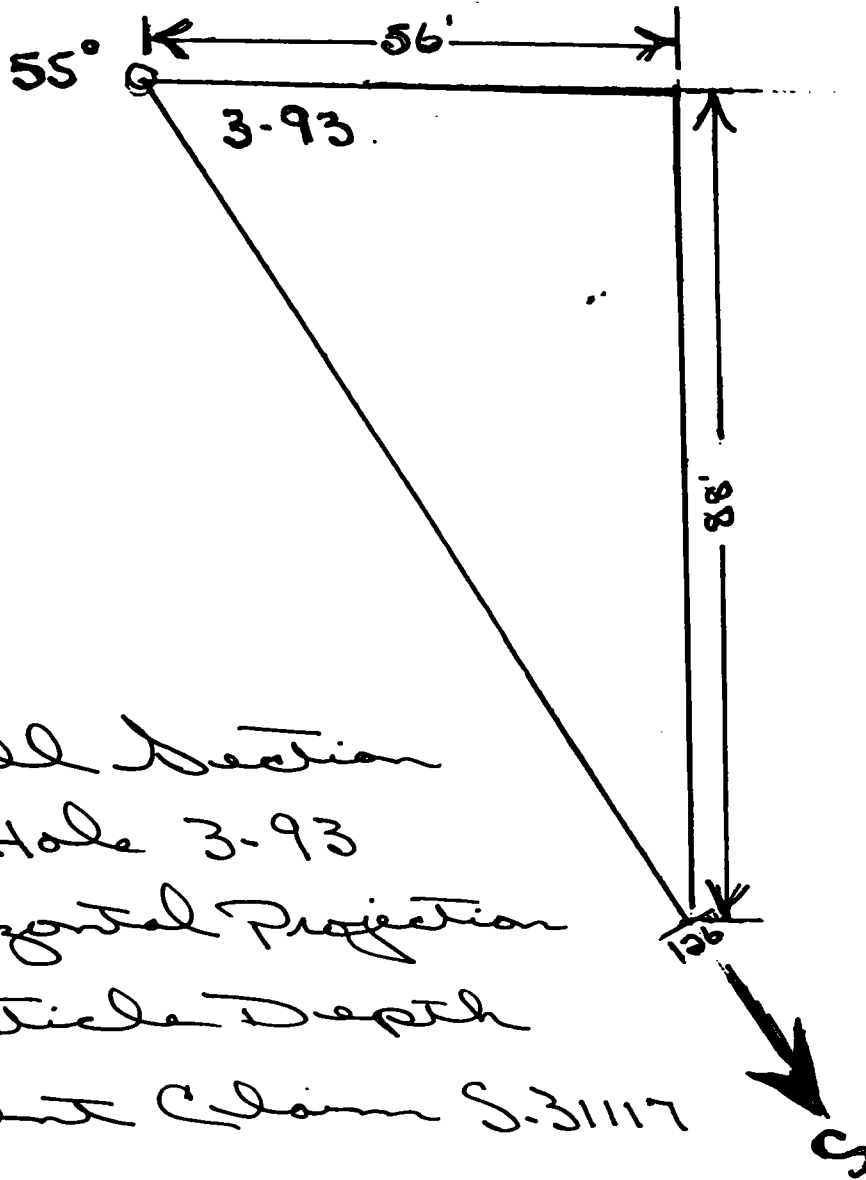
Drill Section

DD Hole 3-93

Patent Claim S-31117

Esther Temp.

Scale: 1" = 20 FT.



Drill Section

DD. Hole 3-93

Horizontal Projection

Vertical Depth

Patent Claim S-31117

& other temp.



Ministry of Northern Development and Mines Ontario

Ministère du Développement du Nord et des Mines Ontario

Diamond Drilling Log

Journal de forage au diamant

Complete this form and related sketch in duplicate. Remplir en deux exemplaires la présente formule et le croquis annexé

Fill in on every page. Remplir ces cases à chaque page

Drilling Company: M. L. Burton
 Date Hole Started: August 21, 1993
 Date Completed: August 27, 1993
 Location: N.T.S. 410/9
 Property Name: Esther Twp.
 Property Name: Burton Property

From/De	To/A	Rock Type	Description	Dip of Hole at Inclination of forage au	Core Sample No. / Numéro de carottes	Sample Length / Longueur de forage	Assays / Analyses
0'	1'	Casing	Meta volcanics				
1'	18'	Meta volcanics	Shearing throughout, green to dark green in colour, some carbonate inclusions.		C-8-93	24"	0.144 AU.
18'	30'5"	Meta volcanics	Quartz carbonate mineralized with pyrite and arsenopyrite.		C-9-93	24"	0.060 AU.
30'5"	50'	Meta volcanics	Green to dark green in colour, sheared, some minor pyrite mineralization.		C-10-93	24"	0.206 AU.
50'	126'	Meta volcanics	Green to dark green in colour, some quartz stringers fine grained.		C-11-93	24"	0.051 AU.
		End of Hole.			C-12-93	24"	0.083 AU.
					C-13-93	24"	0.130 AU.

* For features such as foliation, bedding, schistosity, measured from the long axis of the core.
 * Exemples de caractéristiques : foliation, schistosité, stratification. L'angle est mesuré par rapport à l'axe longitudinal de la carotte.

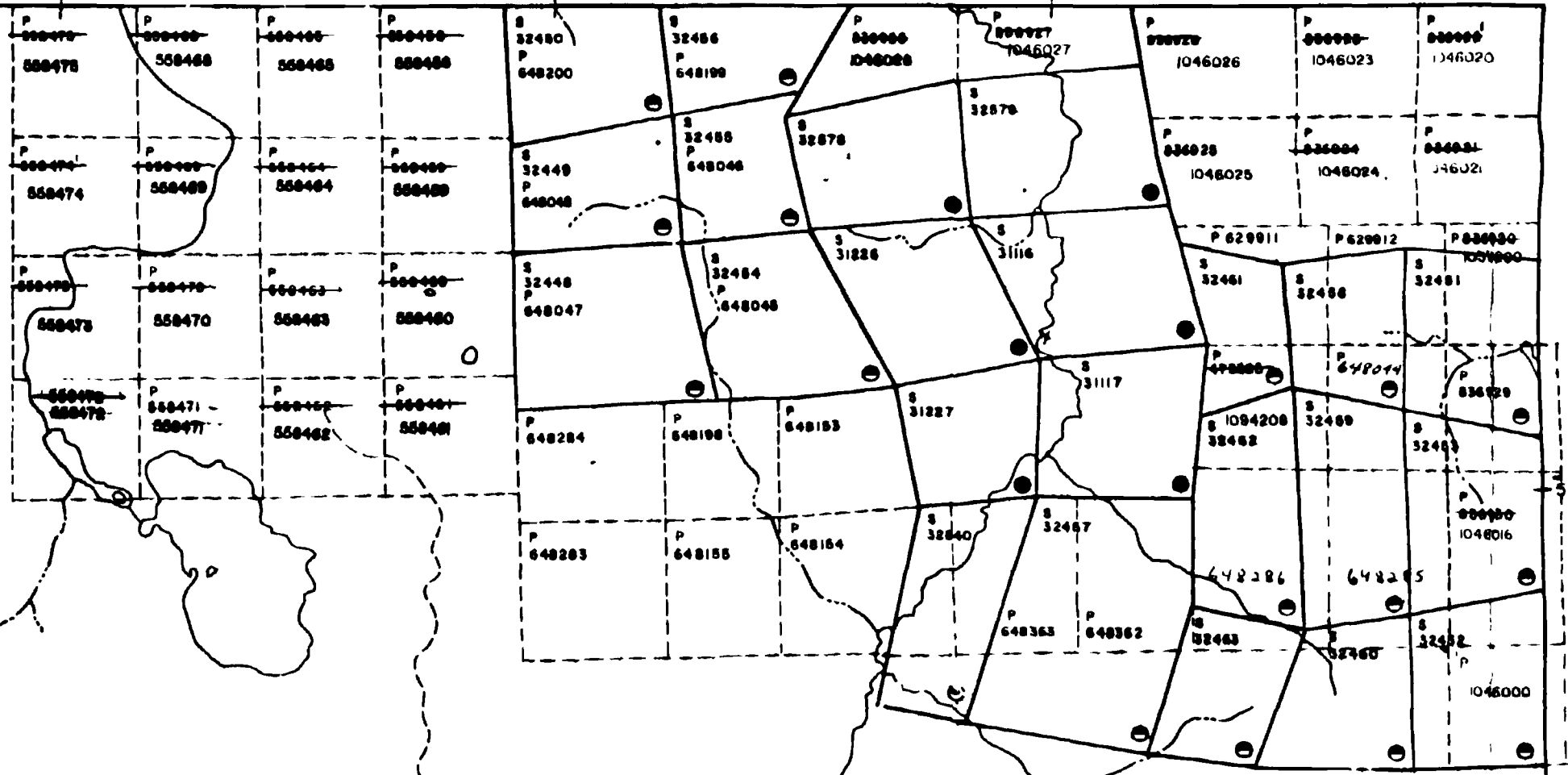
† Additional credit available. See Assessment Work Regulation.
 † Des crédits supplémentaires sont offerts. Consulter les règlements relatifs aux travaux d'évaluation.

Nota : Dans cette formule, lorsqu'il désigne des personnes, le masculin est utilisé au sens neutre.

3M

4M

5M



ESTHER TWP.

1:20000

1493



41009NW0038 OP93-007 ESTHER

200