

41009NW0058 12 BENTON

010

Diamond Drilling

Township of BENTON

Report NO 12

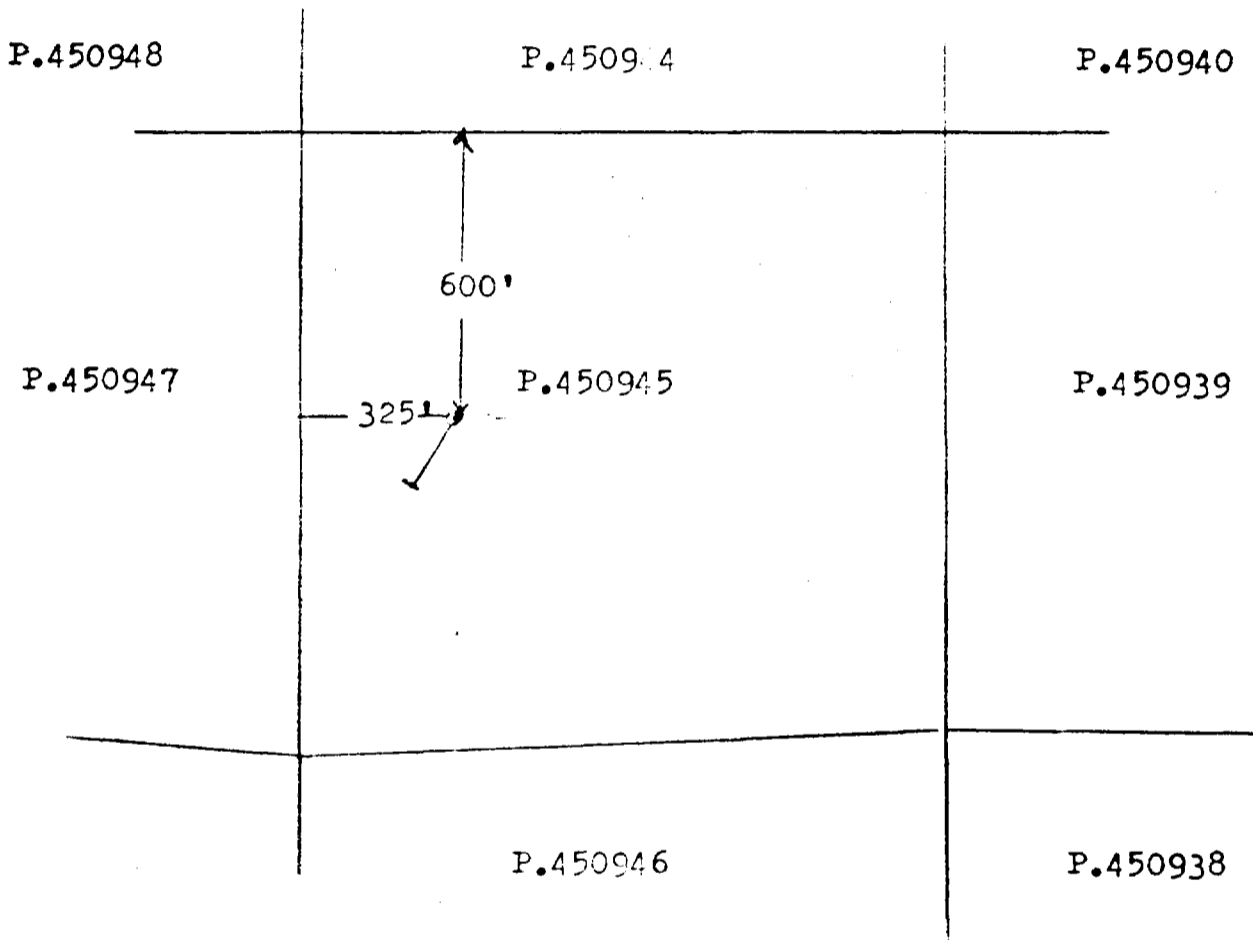
Work performed by: Granges Exploration

Claim NO	Hole NO	Footage	Date	Note
P 450945	SW-44	361.0'	Aug/77	(1)
P 450952	SW-40	261.0'	July/77	(1)

Notes:

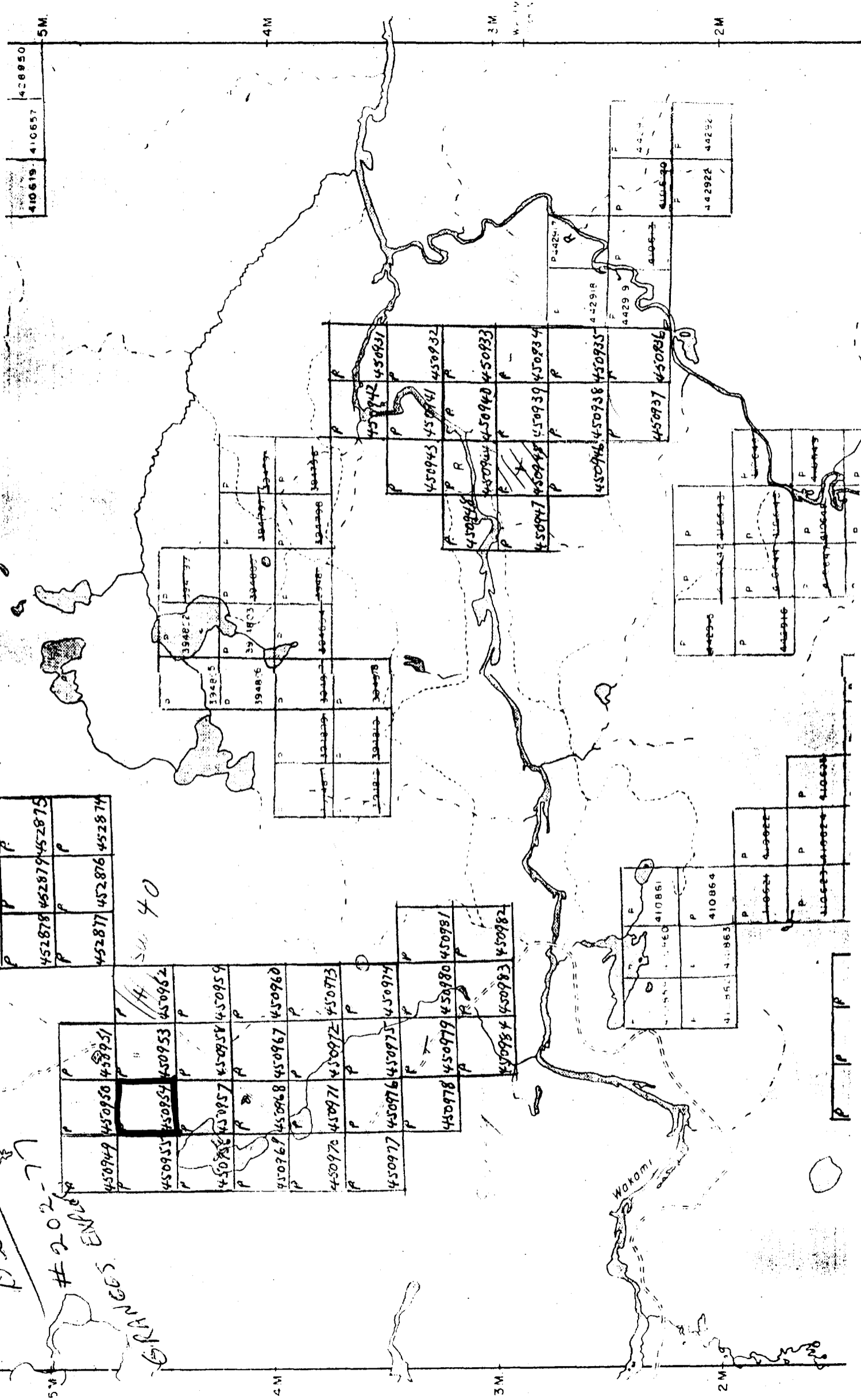
(1) #202-77

LOCATION SKETCH



Benton
 #202-7
 ENCL
 GRANGES

SW 40



SW-44

Grid 30
6+00E
23+75S

conductor
⚡

-60°

Casing

Dacite Tuff

Graphitic Argillite, 20% Gf., 1-2% Py.
Dacite Tuff

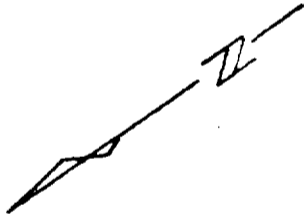
20% Gf.

Bands Dacite Tuff-Graphitic Arg.

20% gf.

Gf.

Dacite Tuff



361'

GRANGES EXPLORATION AB
SWAYZE JOINT VENTURE
BENTON TWP., ONTARIO
SCALE: 1" = 40'

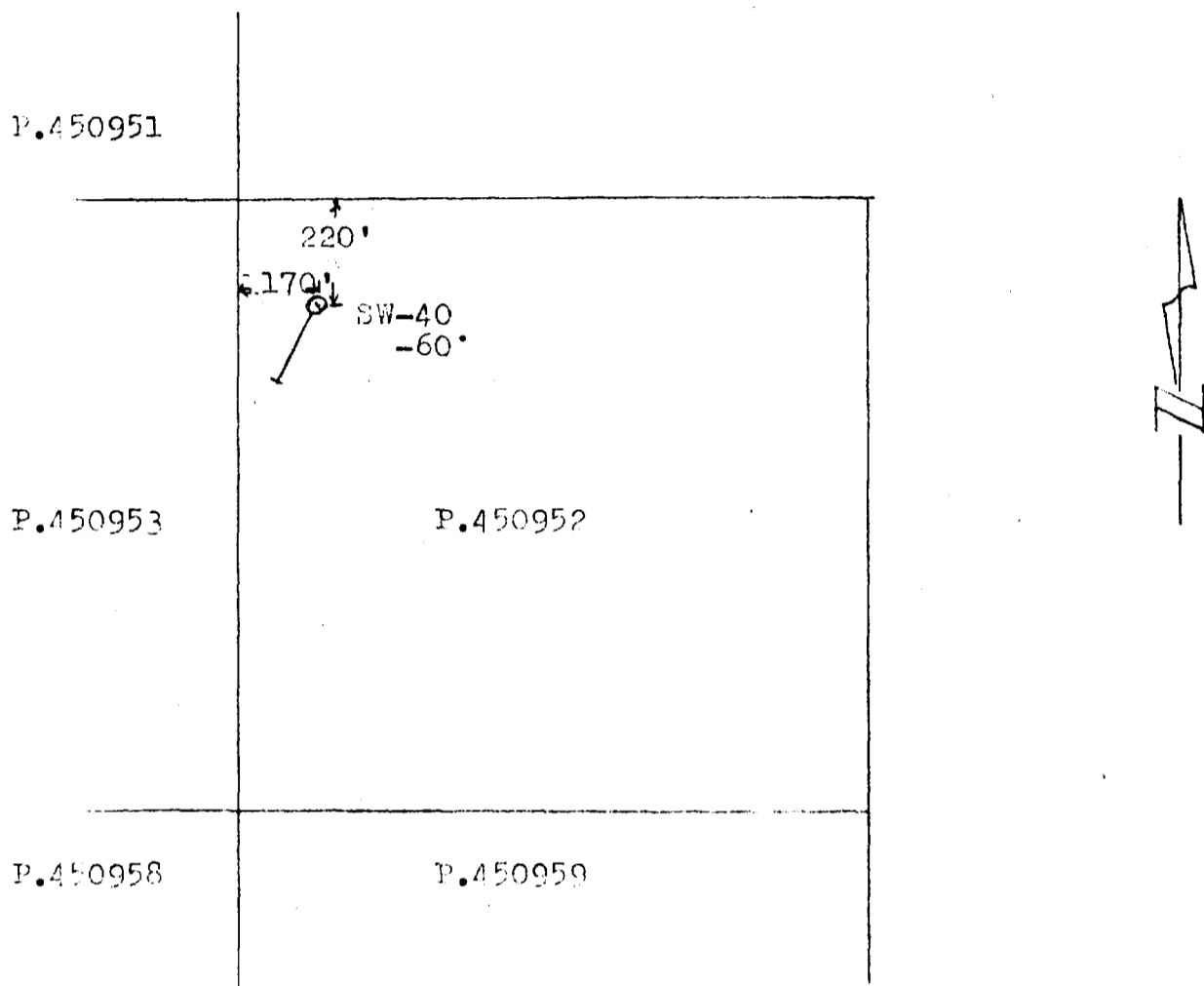


GRANGES EXPLORATION AB
CANADIAN DIVISION
DIAMOND DRILL LOG

Property: *Sudbury De-Asmt. Ventures* Project No. *76554* Depth *361.45* Date Began *July 1977*
 Hole No. *SN-44* Co. ord. *6795 E* Horizontal Length *1.81* feet Date Completed *August 7, 1977*
 Sheet No. *2375 S* Direction *South* Drilled By *Bradley Bros.*
 Claim No. *P.450245* Elevation *Grid 30* Angle *-60°* Logged By *Doug Turnbull*

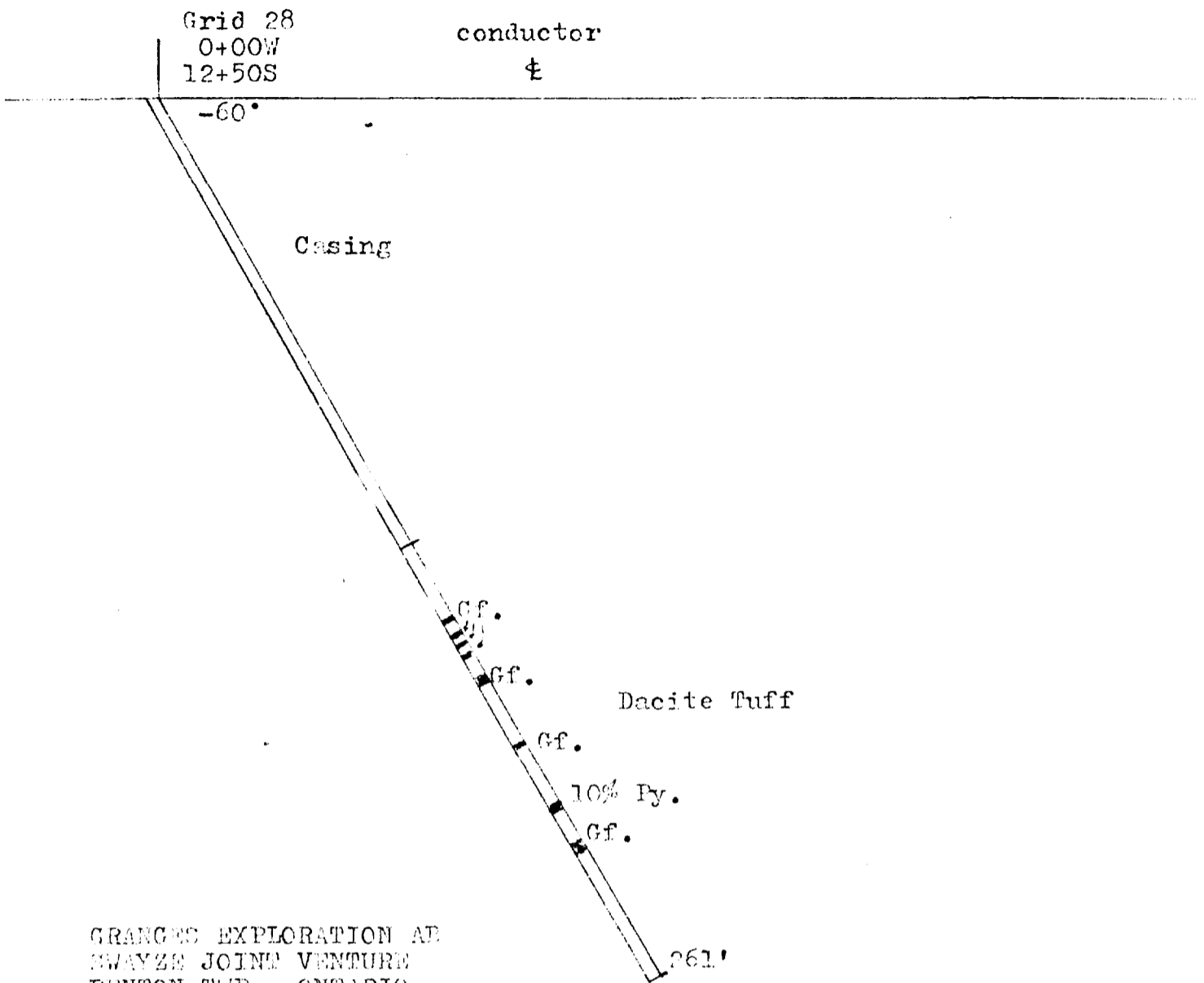
FOOTAGE	DESCRIPTION	ALTERATION		% RECY CALCD.
		FROM	TO	
0.0-146.0	Casing			
146.0-166.8	Dacite Tuffe grey, green, medium grained, fragments ≤ 2 mm, lower contact 30°			
166.8-171.6	Graphitic Argillite \pm			
171.6-186.1	Lapilli Tuffe grey, white, fragments to 25 mm			
186.1-187.0	Graphitic Argillite \pm			
187.0-187.0	Dacite Tuffe			
187.0-226.1	Banded Dacite Tuffe and Graphitic Argillite \pm			
226.1-270.0	Dacite Tuffe			
270.0-271.0	Graphitic Argillite \pm			
271.0-295.3	Dacite Tuffe			
290.3-292.0	Graphitic Argillite \pm			
292.0-361.0	Weakly fragmented Dacite Tuffe \pm Mineralization \pm core Size 6 AQ			
166.8-171.6	10-20% Graphite 1-2% Pyrite			
186.1-187.0	10-20% Graphite			
197.0-226.0	10% Graphite			
258.0-260.5	10-15% Graphite			
200.0-271.0	10-20% Graphite			
290.3-297.0	10-20% Graphite			

LOCATION SKETCH



SCALE: 1" = 400'

SW-40



GRANGES EXPLORATION AB
SWAYZE JOINT VENTURE
BENTON TWP., ONTARIO
SCALE: 1"= 40', LOOKING EAST



GRANGES EXPLORATION AB
CANADIAN DIVISION
DIAMOND DRILL LOG

Property: *Swayze Joint Ventures* Project No.: *70564* Depth: *761 feet* Date Began: *July 17, 1977*
 Hole No.: *SN-AQ* Co ord.: *0700* Horizontal Length: *130 feet* Date Completed: *July 20, 1977*
 Sheet No.: *12150N* Direction: *South (grid)* Drilled By: *Bradley Bves*
 Claim No.: *P. 446927* Elevation: *Grid 78* Angle: *-60°* Logged By: *Doug Hunter*

FOOTAGE	DESCRIPTION	ALTERATION				% RECY CALC'D.
		FROM	TO			
0.0 - 132.0	Casing					
132.0 - 261.0	Dacite Tuffe grey, green, moderate brecciation with graphitic matrix.					
	Mineralization:					
153.4 - 155.8	15-20% Graphite					
157.8 - 159.0	15-20% Graphite					
160.0 - 160.5	15-20% Graphite					
163.2 - 163.9	15-20% Graphite					
171.0 - 173.0	15-20% Graphite					
191.5 - 192.0	15-20% Graphite					
208.0 - 210.0	15-20% Graphite					
219.5 - 223.9	10% Pyrite					
	Core AQ					

