



41009NW0059 13 BENTON

010

Diamond Drilling

Township of BENTON

Report No 13

Work performed by: Granges Exploration

Claim No	Hole No	Footage	Date	Note
P 450979	SW-39	344.0'	July/77	(1)

Notes:

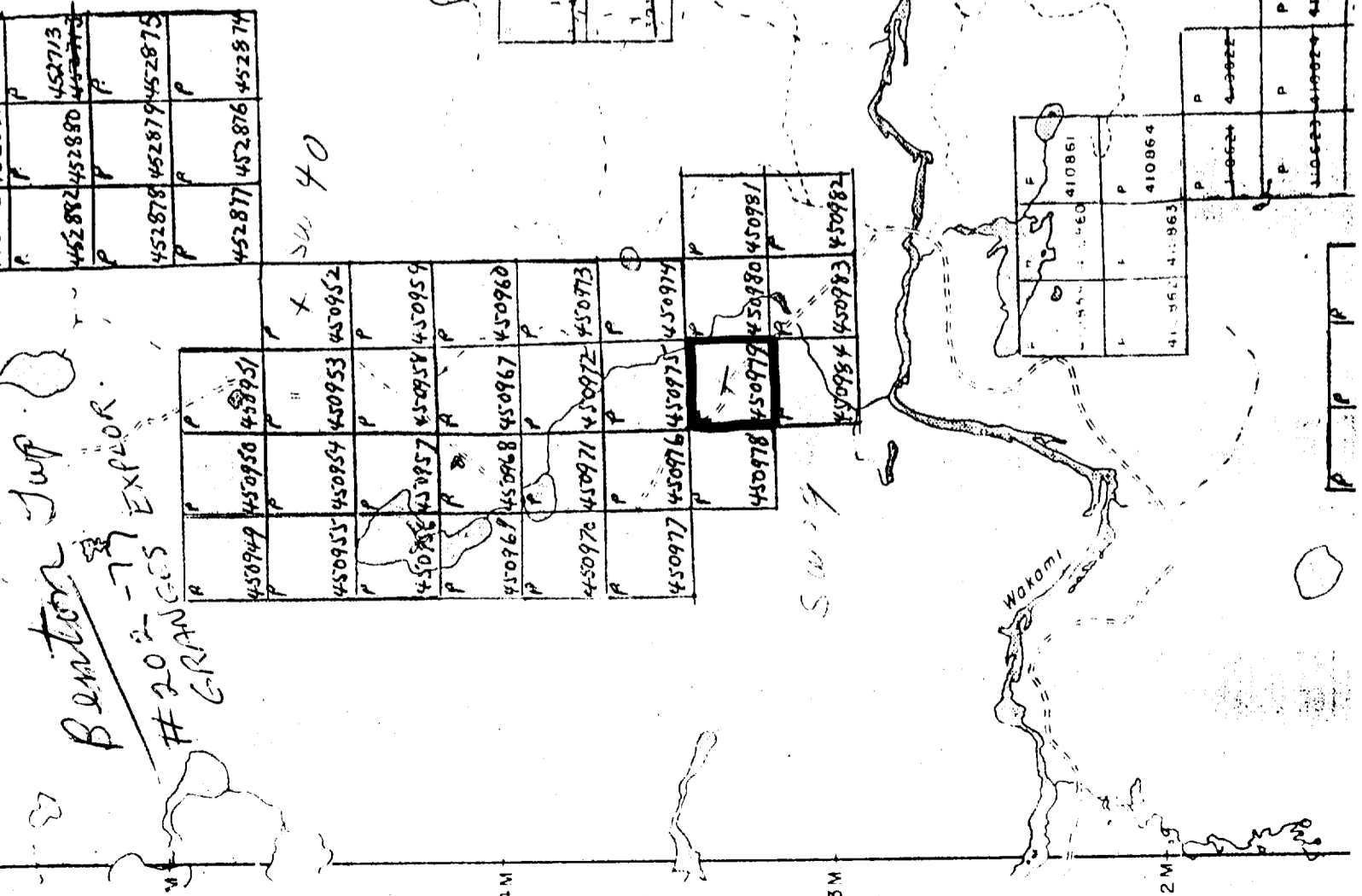
(1) #202-77

Benton Jwp
 #20 - 77 EXPLOR.
 GRANGES

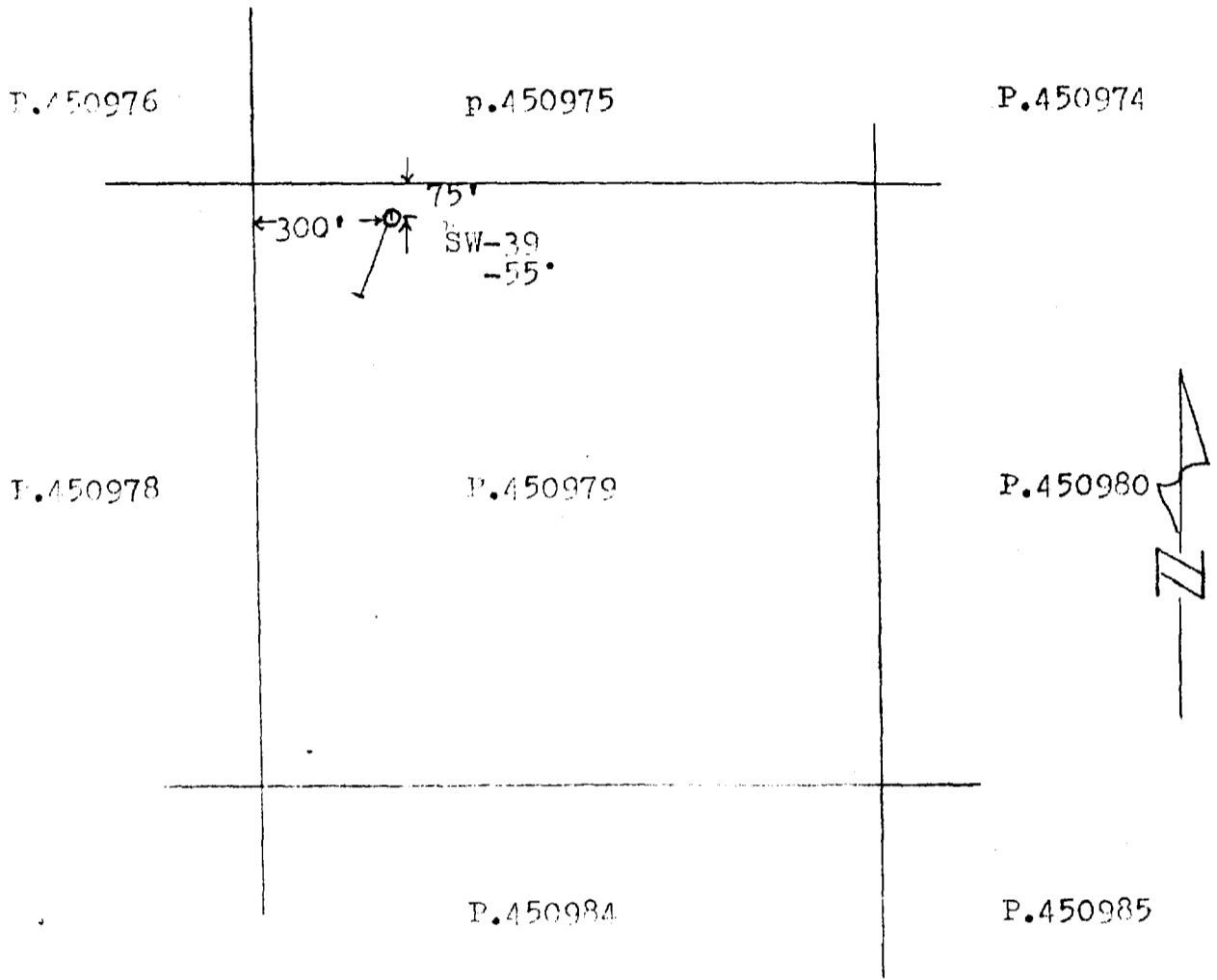
SU 40

SU 29

Wakomi



LOCATION SKETCH

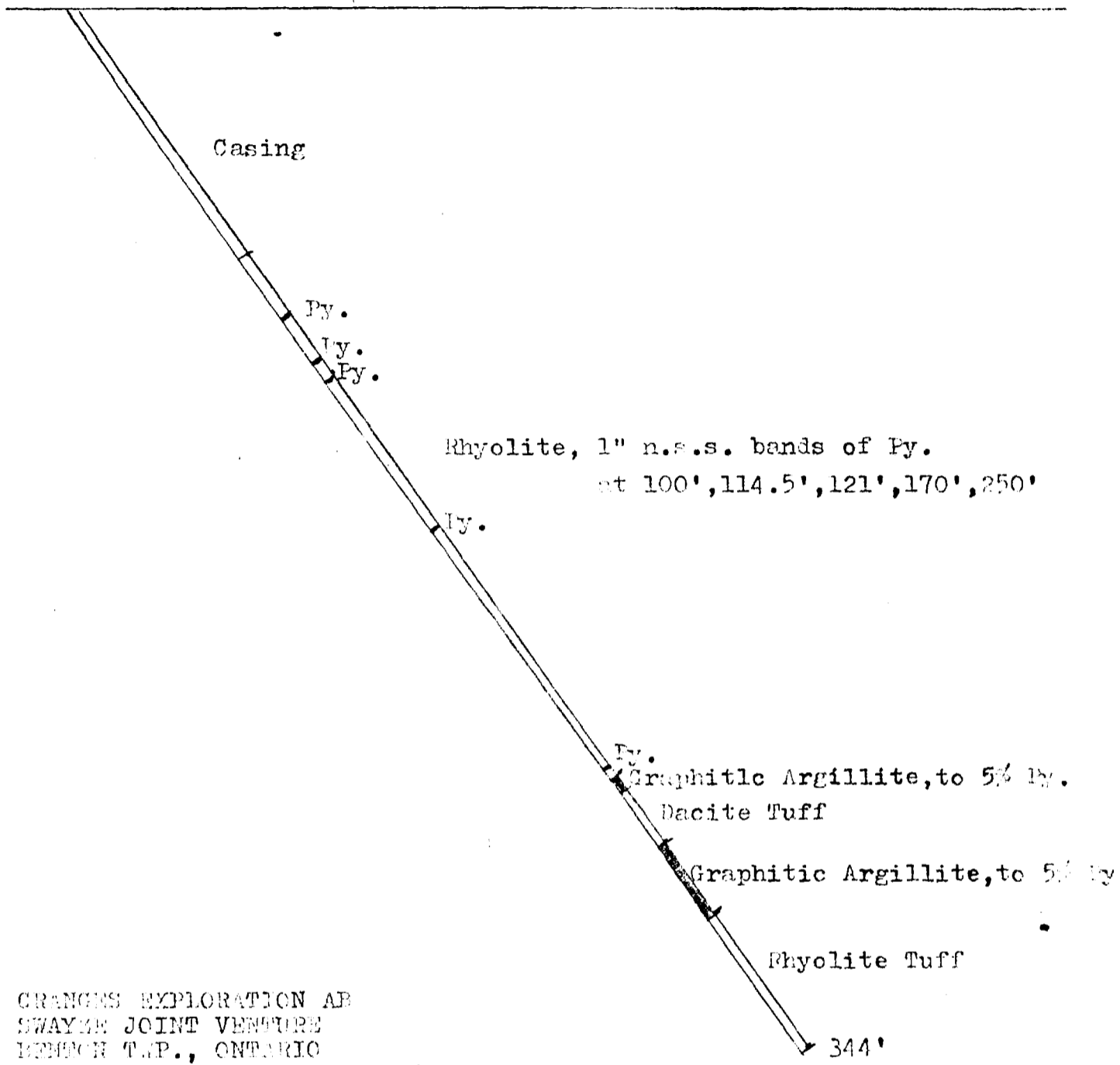


SCALE: 1" = 400'

SW-39

Grid 29
4+00E
11+50S
-55°

conductor
⊕



CRANGES EXPLORATION AB
SWAYNE JOINT VENTURE
BENSON TWP., ONTARIO
SCALE 1" = 40', LOOKING EAST



GRANGES EXPLORATION AB
CANADIAN DIVISION
DIAMOND DRILL LOG

Property **Swingage Joint Venture** & Project No. **70504** Depth **344 feet** Date Began **July 19, 1977**
 Hole No. **SN-39** Co. ord. **A190.E** Horizontal Length Date Completed **July 16, 1977**
 Sheet No. **1150.N** Direction **South (uprid)** Drilled By **Bradley Bras**
 Claim No. **P. 490979** Elevation **Grid: 29** Angle **-55°** Logged By **Doug Tuttle**

FOOTAGE	DESCRIPTION	ALTERATION				% RECY CALC'D.
		FROM	TO			
0.0-80.0	Casing					
80.0-253.0	Rhyolite - olive green, moderately fragmented with narrow brecciated sections, some blue quartz phenes, narrow sericitic sections.					
253.0-258.3	Graphitic Argillite - black, very black sections are soft, very friable, Test 1535-255.0 Ks 46					
258.3-276.6	Dacite Tuff - grey, black, very badly broken.					
276.6-299.0	Graphitic Argillite - as before, recy 60%					
299.0-344.0	Rhyolite Tuff - olive green, tuffaceous fragments up to 2mm Core Size 8 AQ					
Mineralization:						
80.0-253.0	1% Pyrite with solid ex Near Solid bands at 106', 114.5', 121.0', 170', 250' average 1"					
253.0-258.3	1-5% Pyrite, 15-20% Graphite					
258.3-276.6	1% Pyrite					
276.6-299.0	5% Pyrite 15-20% Graphite					

GRANGES EXPLORATION AB
 CANADIAN DIVISION
DIAMOND DRILL RECORD

Property *Sweeney Investment Venture*, Project No. *76504*, Depth *344 feet*, Date Began *July 14, 1977*
 Hole No. *SN-39*, Co. Ord. *4100 E*, Horizontal Length *189 feet*, Date Completed *July 19, 1977*
 Sheet No. *11750 N*, Direction *South (grid)*, Drilled By *Bradley Bros.*
 Claim No. *P. 450279*, Elevation *Grid 78*, Angle *-55°*, Logged By *D. Tuttle*

FOOTAGE	NUMBER	WIDTH	Au.	Ag.	Cu.	Zn.	AVERAGES				REMARKS	
							WIDTH	Au.	Ag.	Cu.		Zn.
0.0 - 80.0	Casing	80.0										
80.0 - 113.0	Waste	33.0										
113.0 - 116.0	9171	3.0										
113.0 - 120.5	Waste	7.5										
120.5 - 121.5	9172	1.0										
121.5 - 169.5	Waste	48.0										
169.5 - 170.5	9173	1.0										
170.5 - 249.5	Waste	79.0										
249.5 - 251.5	9174	2.0										
251.5 - 258.3	9175	6.8										
258.3 - 262.0	9176	3.7										
262.0 - 278.0	9177	16.0										
278.0 - 282.0	9178	4.0										
282.0 - 298.0	9179	16.0										
298.0 - 300.0	9180	2.0										
300.0 - 344.0	Waste	44.0										
End.												