



41009NW0098 19 GARNET

010

Diamond Drilling

2

Township of GARNET

Report NO 19

Work performed by: Dome Exploration Limited

Claim NO	Hole NO	Footage	Date	Note
S 292406	27-6-1	353.0'	Nov/71	

Notes:

#39/72

HOME EXPLORATION (CANADA) LIMITED

LOCATION: Line 8E, 0 +60S

From collar 430' East to Post No. 2 Claim S 292406 DIAMOND DRILL RECORD

AZIMUTH: 014°

PROPERTY: Project 2

Garnet To

DIP: - 55°

LENGTH: 353'

ELEVATION:

CLAIM No: S 29240

STARTED: November 14, 1971

CORE SIZE: AXT

DATE LOGGED: January 26, 1972 SECTION:

COMPLETED: November 15, 1971

DIP TESTS: At 300' - 43° (corrected)

LOGGED BY: L.B. H

PURPOSE: To test E.M. anomaly

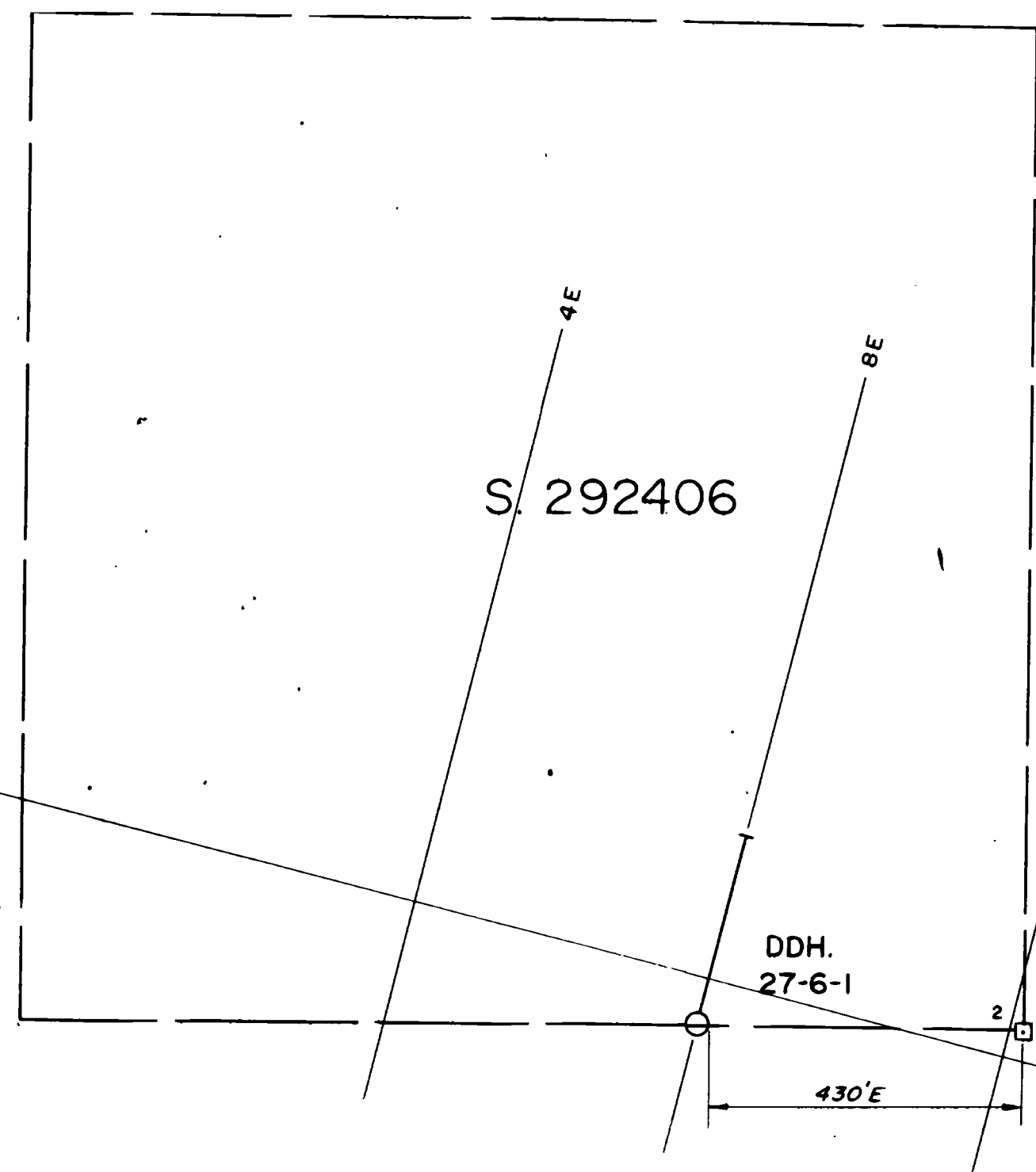
FOOTAGE		DESCRIPTION	SAMPLE No	FOOTAGE		LENGTH	AU dwt/tonoz	AG ton	%Cu
from	to			from	to				
0.0	49.0	OVERBURDEN							
49.0	55.4	IRON FORMATION: fine-grained, grey, granular quartz with bands of pyrrhotite and pyrite (5-10%), specks chalcopyrite.	2330	49.0	55.4	6.4	.10	NIL	.040
55.4	147.0	INTERMEDIATE VOLCANIC: fine-grained, green altered to chlorite-carbonate schist (at 55' to core axis), numerous small quartz veinlets. Minor disseminated pyrite.							
		140' - 148': thin, black argillite(?) beds increasing in number with depth surrounding volcanic fragments with blebs pyrite, pyrrhotite.							
147.0	158.2	IRON FORMATION: fine-grained, grey to black, granular to cherty quartz with argillite interbeds and some graphite. Bands of pyrrhotite, pyrite (5%) along bedding.	2331	147.0	158.2	11.2	NIL	NIL	.055
158.2	163.2	FELSITE DYKE: fine-grained, light grey-green, occasional feldspar phenocrysts, 1-2% disseminated pyrite.	2332	158.2	163.2	5.0	NIL	NIL	

DIAMOND DRILL RECORD

DIAMOND DRILL RECORD

HOLE N
PAGE N

FOOTAGE		DESCRIPTION	SAMPLE No	FOOTAGE		LENGTH	Au dwt/tonoz	Ag /ton	%Cu
from	to			from	to				
163.2	184.0	GRAPHITIC SEDIMENTS: fine-grained, grey to black argillite with abundant graphite. Regularly banded at 45° to contorted. Occasional carbonate veinlets 5-10% pyrite, pyrrhotite usually along banding.	Conductive 2333 2334	163.2 173.2	173.2 184.0	10.0 10.8	NIL NIL	NIL NIL	.065 .075
184.0	353.0	INTERMEDIATE VOLCANIC: fine-grained, green, chloritic, with carbonate blebs and veinlets, quartz veinlets, schistose at 45° becomes more massive with depth. Some interbedded argillite in upper 10'. Minor disseminated pyrite. Occasional short sections of rhyolite.							
	353.0	END OF HOLE							
		Conductive zone at 163.2' - 184.0' is probable cause of E.M. anomaly.							
		Core tested for radioactivity and fluorescence - results negative.							
		Core stored at Dome Mines, South Porcupine.							
		Drilling by Continental Drilling Co., Box 250, Rouyn, Quebec.							



Report #39
 Sudbury
 L. Halliday



DOME EXPLORATION (CANADA) LTD.				
PROJ. 27	SWAYZE, ONT.			
LOCATION MAP				
DDH. 27-6-1				
SCALE	DATE	BY	NTS. No.	DWG. No.
1" = 200'	FEB 72	L.H.	41-0-10	27-72-14 A.M.

